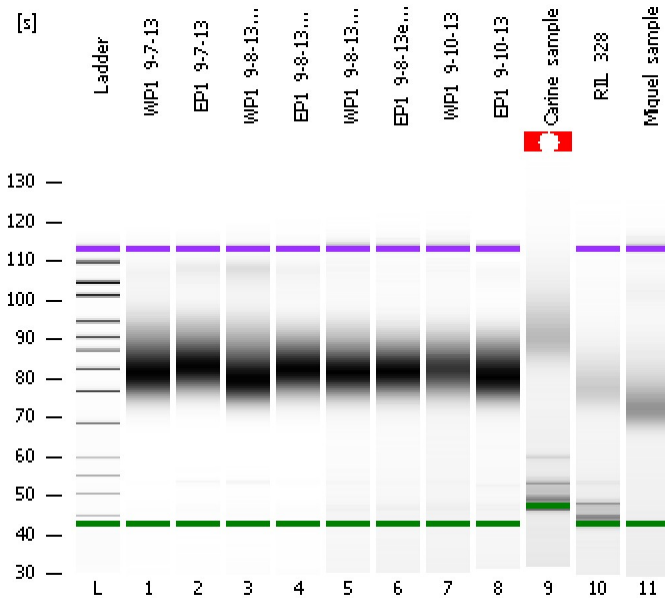


Assay Class: High Sensitivity DNA Assay  
Data Path: C:\...ents and Settings\Bioanalyzer\2014-01-27\2014-01-27\_005.xad

Created: 1/27/2014 2:37:35 PM  
Modified: 1/27/2014 3:19:39 PM

**Electrophoresis File Run Summary**



Instrument Information:

Instrument Name: DE13701086      Firmware: C.01.069  
Serial#: DE13701086      Type: G2938B

Assay Information:

Assay Origin Path: C:\Program Files\Agilent\2100 bioanalyzer\2100 expert\assays\dsDNA\High Sensitivity DNA.xsy  
Assay Class: High Sensitivity DNA Assay  
Version: 1.03  
Assay Comments: Copyright © 2003-2010 Agilent Technologies

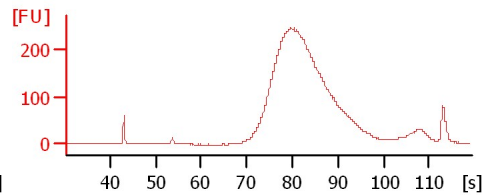
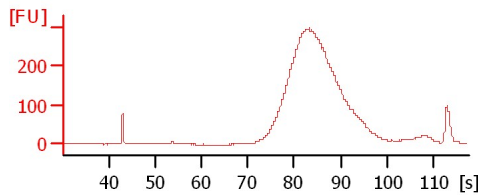
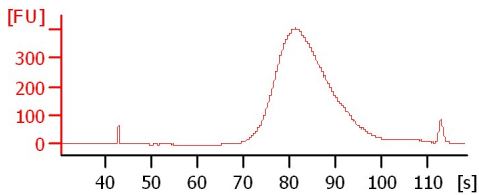
Chip Information:

Chip Lot #:   
Reagent Kit Lot #:   
Chip Comments:

**WP1\_9-7-13**

**EP1\_9-7-13**

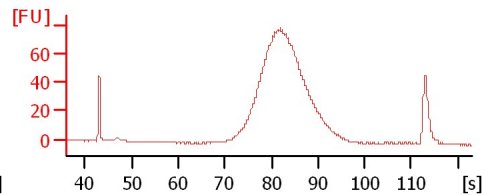
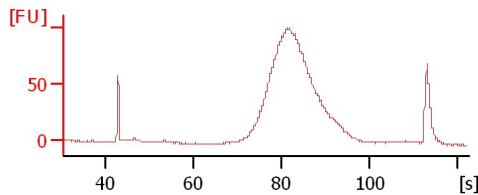
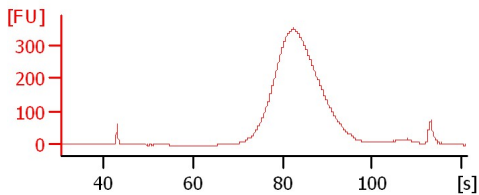
**WP1\_9-8-13MOR**



**EP1\_9-8-13MOR**

**WP1\_9-8-13eve**

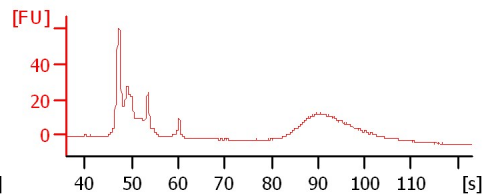
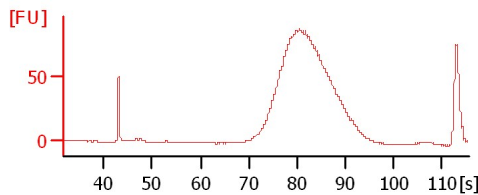
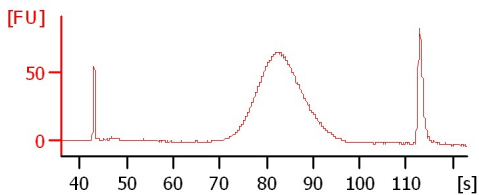
**EP1\_9-8-13eve**



**WP1\_9-10-13**

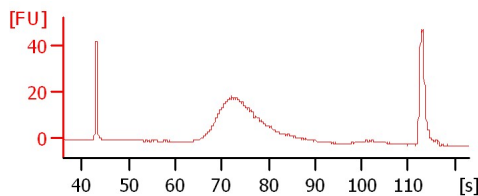
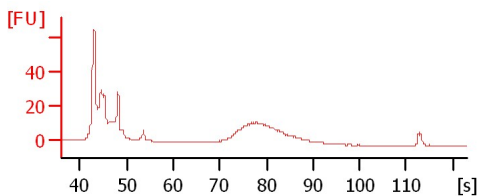
**EP1\_9-10-13**

**Carine\_sample**



**RIL\_328**

**Miguel\_sample**



Assay Class: High Sensitivity DNA Assay  
Data Path: C:\...ents and Settings\Bioanalyzer\2014-01-27\2014-01-27\_005.xad

Created: 1/27/2014 2:37:35 PM  
Modified: 1/27/2014 3:19:39 PM

**Electrophoresis File Run Summary (Chip Summary)**

Sample Name	Sample Comment	Rest. Digest	Status	Observation	Result Label	Result Color
WP1_9-7-13		<input type="checkbox"/>	✓			
EP1_9-7-13		<input type="checkbox"/>	✓			
WP1_9-8-13MOR		<input type="checkbox"/>	✓			
EP1_9-8-13MOR		<input type="checkbox"/>	✓			
WP1_9-8-13eve		<input type="checkbox"/>	✓			
EP1_9-8-13eve		<input type="checkbox"/>	✓			
WP1_9-10-13		<input type="checkbox"/>	✓			
EP1_9-10-13		<input type="checkbox"/>	✓			
Carine_sample		<input type="checkbox"/>	✓			
RIL_328		<input type="checkbox"/>	✓			
Miguel_sample		<input type="checkbox"/>	✓			
Ladder		<input type="checkbox"/>	✓			

**Chip Lot #**

**Reagent Kit Lot #**

**Chip Comments :**

Assay Class: High Sensitivity DNA Assay  
Data Path: C:\...ents and Settings\Bioanalyzer\2014-01-27\2014-01-27\_005.xad

Created: 1/27/2014 2:37:35 PM  
Modified: 1/27/2014 3:19:39 PM

**Electrophoresis Assay Details**

**General Analysis Settings**

Number of Available Sample and Ladder Wells (Max.) : 12  
Minimum Visible Range [s] : 32  
Maximum Visible Range [s] : 138  
Start Analysis Time Range [s] : 33  
End Analysis Time Range [s] : 137.5  
Ladder Concentration [pg/μl] : 1950  
Uses Standard Area for Ladder Fragments  
Lower Marker Concentration [pg/μl] : 125  
Upper Marker Concentration [pg/μl] : 75  
Used Upper Marker for Quantitation  
Standard Curve Fit is Point to Point  
Show Data Aligned to Lower and Upper Marker

**Integrator Settings**

Integration Start Time [s] : 33.05  
Integration End Time [s] : 137  
Slope Threshold : 0.8  
Height Threshold [FU] : 5  
Area Threshold : 0.1  
Width Threshold [s] : 0.6  
Baseline Plateau [s] : 0.5

**Filter Settings**

Filter Width [s] : 0.5  
Polynomial Order : 4

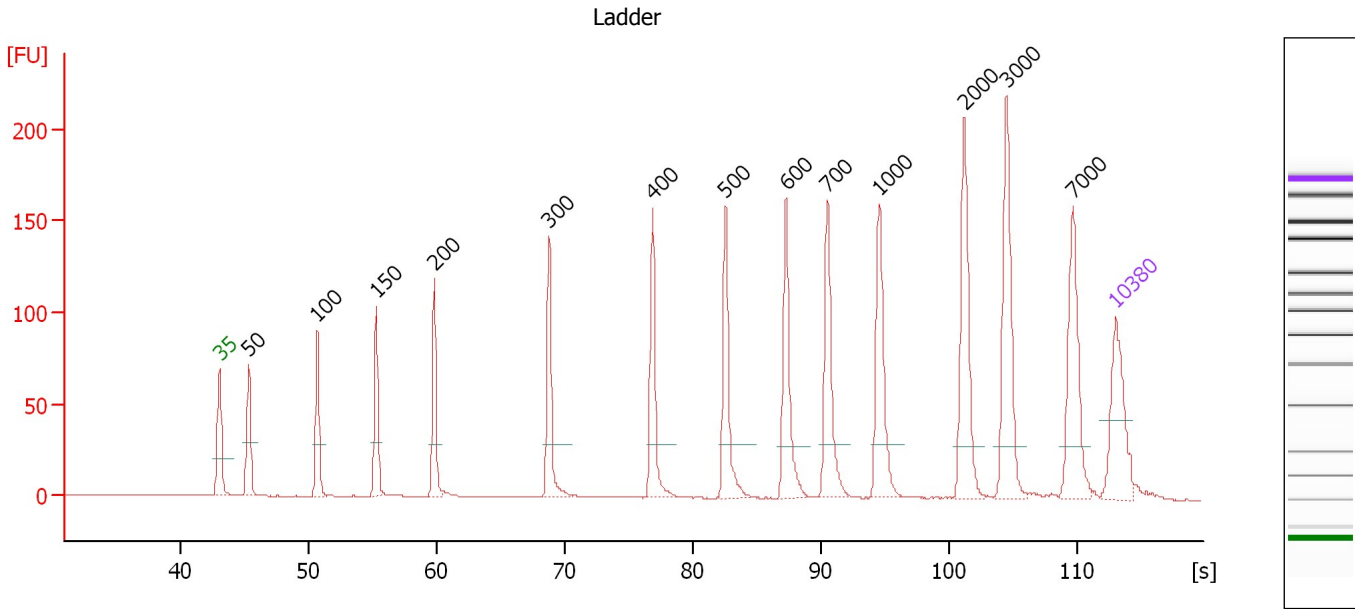
**Ladder**

Ladder Peak	Size	Area
1	35	160
2	50	210
3	100	208
4	150	221
5	200	242
6	300	270
7	400	305
8	500	306
9	600	336
10	700	321
11	1000	366
12	2000	413
13	3000	411
14	7000	400
15	10380	214

Assay Class: High Sensitivity DNA Assay  
 Data Path: C:\...ents and Settings\Bioanalyzer\2014-01-27\2014-01-27\_005.xad

Created: 1/27/2014 2:37:35 PM  
 Modified: 1/27/2014 3:19:39 PM

**Electropherogram Summary**



**Overall Results for Ladder**

Noise: 0.2

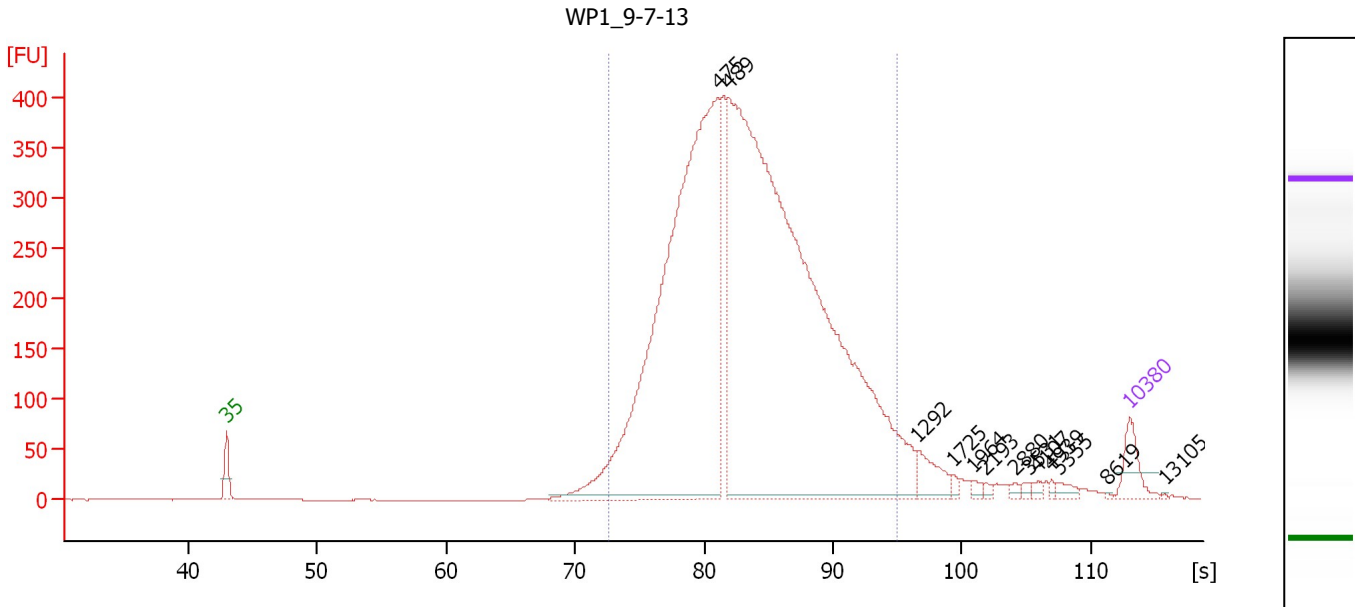
**Peak table for Ladder**

Peak	Aligned Migration Time [s]	Size [bp]	Conc. [pg/μl]	Molarity [pmol/l]	Observations
1	43.00	35	125.00	5,411.3	Lower Marker
2	45.26	50	150.00	4,545.5	Ladder Peak
3	50.63	100	150.00	2,272.7	Ladder Peak
4	55.25	150	150.00	1,515.2	Ladder Peak
5	59.78	200	150.00	1,136.4	Ladder Peak
6	68.75	300	150.00	757.6	Ladder Peak
7	76.80	400	150.00	568.2	Ladder Peak
8	82.51	500	150.00	454.5	Ladder Peak
9	87.25	600	150.00	378.8	Ladder Peak
10	90.48	700	150.00	324.7	Ladder Peak
11	94.55	1,000	150.00	227.3	Ladder Peak
12	101.17	2,000	150.00	113.6	Ladder Peak
13	104.44	3,000	150.00	75.8	Ladder Peak
14	109.64	7,000	150.00	32.5	Ladder Peak
15	113.00	10,380	75.00	10.9	Upper Marker

Assay Class: High Sensitivity DNA Assay  
 Data Path: C:\...ents and Settings\Bioanalyzer\2014-01-27\2014-01-27\_005.xad

Created: 1/27/2014 2:37:35 PM  
 Modified: 1/27/2014 3:19:39 PM

**Electropherogram Summary Continued ...**



**Overall Results for sample 1 : WP1\_9-7-13**

Number of peaks found: 13                      Corr. Area 1: 6,496.6  
 Noise: 0.2

**Peak table for sample 1 : WP1\_9-7-13**

Peak	Aligned Migration Time [s]	Size [bp]	Conc. [pg/μl]	Molarity [pmol/l]	Observations
1	43.00	35	125.00	5,411.3	Lower Marker
2	81.08	475	2,934.06	9,360.1	
3	81.87	489	4,400.52	13,640.2	
4	96.48	1,292	94.84	111.3	
5	99.35	1,725	11.88	10.4	
6	100.93	1,964	13.75	10.6	
7	101.80	2,193	10.11	7.0	
8	104.05	2,880	10.35	5.4	
9	105.13	3,531	9.60	4.1	
10	105.88	4,107	13.69	5.1	
11	106.97	4,939	7.59	2.3	
12	107.51	5,355	20.55	5.8	
13	111.25	8,619	2.01	0.4	
14	113.00	10,380	75.00	10.9	Upper Marker
15	115.71	13,105	0.00	0.0	

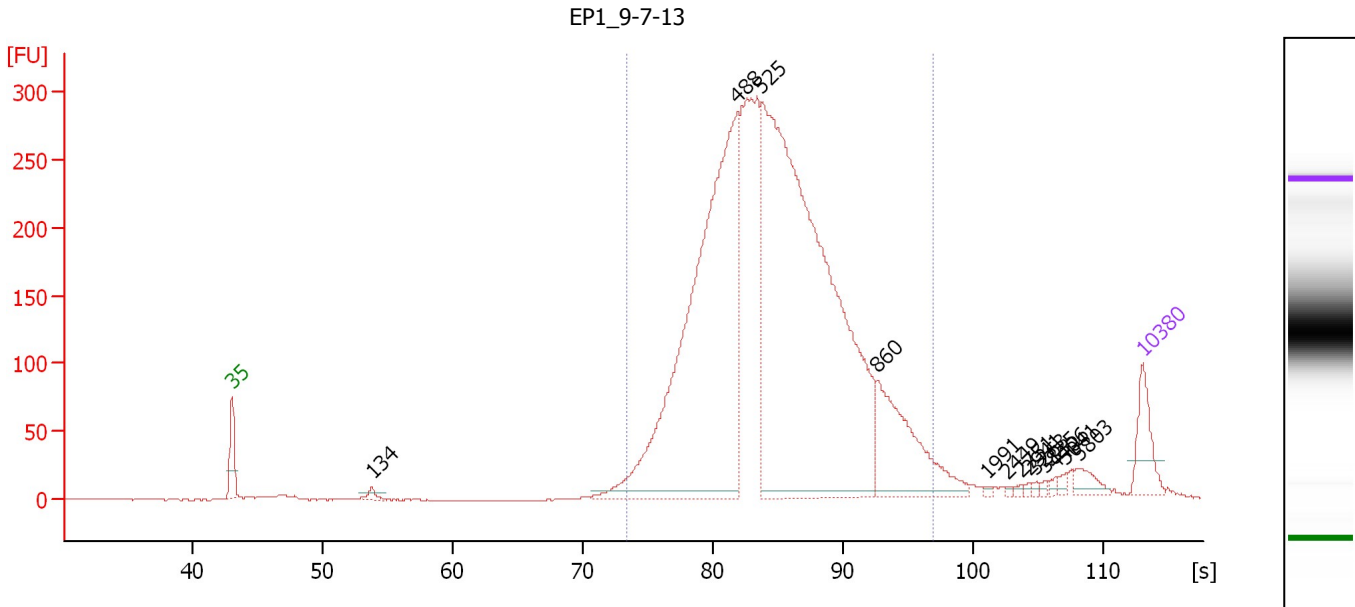
**Region table for sample 1 : WP1\_9-7-13**

From [bp]	To [bp]	Average Size [bp]	Molarity [pmol/l]	Conc. [pg/μl]	Corr. Area	% of Total	Size distribution in CV [%]	Color
348	1,057	537	21,324.0	7,095.49	6,496.6	93	24.2	Blue

Assay Class: High Sensitivity DNA Assay  
 Data Path: C:\...ents and Settings\Bioanalyzer\2014-01-27\2014-01-27\_005.xad

Created: 1/27/2014 2:37:35 PM  
 Modified: 1/27/2014 3:19:39 PM

**Electropherogram Summary Continued ...**



**Overall Results for sample 2 : EP1\_9-7-13**

Number of peaks found: 13                      Corr. Area 1: 4,416.5  
 Noise: 0.3

**Peak table for sample 2 : EP1\_9-7-13**

Peak	Aligned Migration Time [s]	Size [bp]	Conc. [pg/μl]	Molarity [pmol/l]	Observations
1	43.00	35	125.00	5,411.3	Lower Marker
2	53.77	134	19.94	225.4	
3	81.84	488	1,540.35	4,780.1	
4	83.70	525	2,112.02	6,094.8	
5	92.65	860	299.55	527.5	
6	101.11	1,991	4.28	3.3	
7	102.64	2,449	2.91	1.8	
8	103.63	2,751	4.51	2.5	
9	104.25	2,941	3.96	2.0	
10	104.79	3,263	4.68	2.2	
11	105.53	3,835	4.59	1.8	
12	106.27	4,406	7.02	2.4	
13	107.10	5,041	7.98	2.4	
14	108.09	5,803	28.99	7.6	
15	113.00	10,380	75.00	10.9	Upper Marker

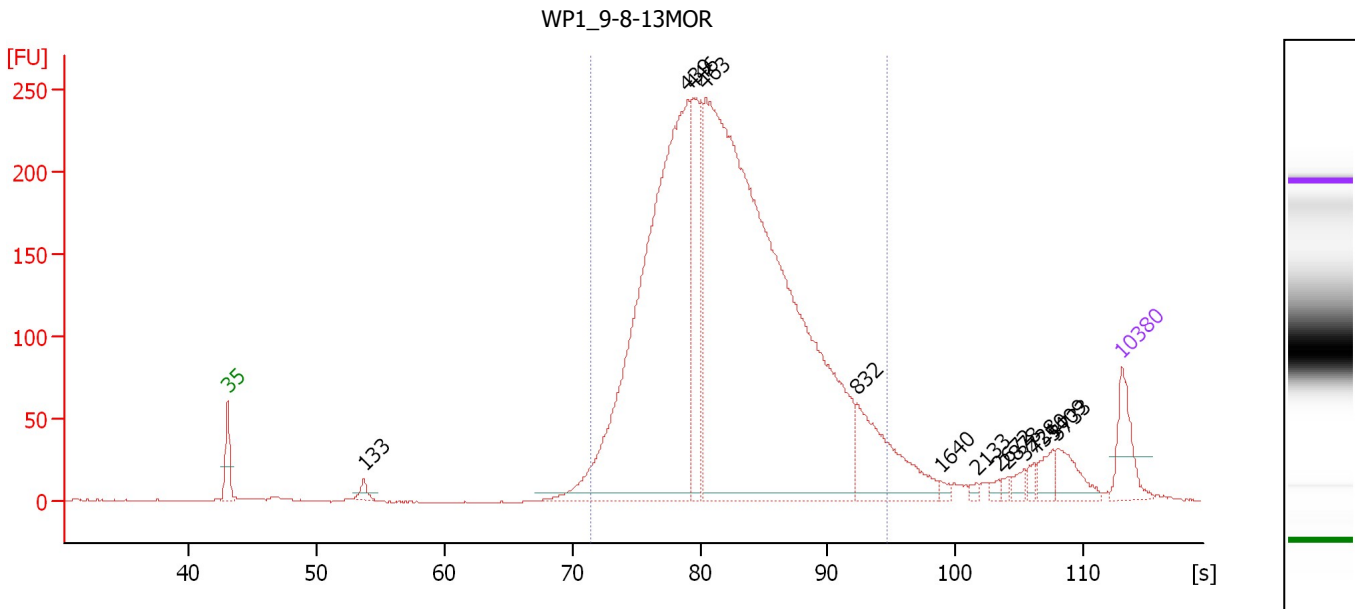
**Region table for sample 2 : EP1\_9-7-13**

From [bp]	To [bp]	Average Size [bp]	Molarity [pmol/l]	Conc. [pg/μl]	Corr. Area	% of Total	Size distribution in CV [%]	Color
357	1,343	572	12,458.2	4,374.47	4,416.5	95	27.2	Blue

Assay Class: High Sensitivity DNA Assay  
 Data Path: C:\...ents and Settings\Bioanalyzer\2014-01-27\2014-01-27\_005.xad

Created: 1/27/2014 2:37:35 PM  
 Modified: 1/27/2014 3:19:39 PM

**Electropherogram Summary Continued ...**



**Overall Results for sample 3 : WP1\_9-8-13MOR**

Number of peaks found: 13      Corr. Area 1: 4,026.0  
 Noise: 0.3

**Peak table for sample 3 : WP1\_9-8-13MOR**

Peak	Aligned Migration Time [s]	Size [bp]	Conc. [pg/μl]	Molarity [pmol/l]	Observations
1	43.00	35	125.00	5,411.3	Lower Marker
2	53.68	133	26.54	302.4	
3	79.03	439	1,601.32	5,526.6	
4	79.45	446	339.07	1,150.9	
5	80.42	463	2,608.85	8,531.2	
6	92.27	832	236.14	429.8	
7	98.79	1,640	9.89	9.1	
8	101.61	2,133	6.57	4.7	
9	103.37	2,672	8.93	5.1	
10	104.05	2,878	7.12	3.7	
11	105.39	3,728	15.85	6.4	
12	106.15	4,310	13.08	4.6	
13	107.58	5,409	32.57	9.1	
14	108.00	5,733	55.36	14.6	
15	113.00	10,380	75.00	10.9	Upper Marker

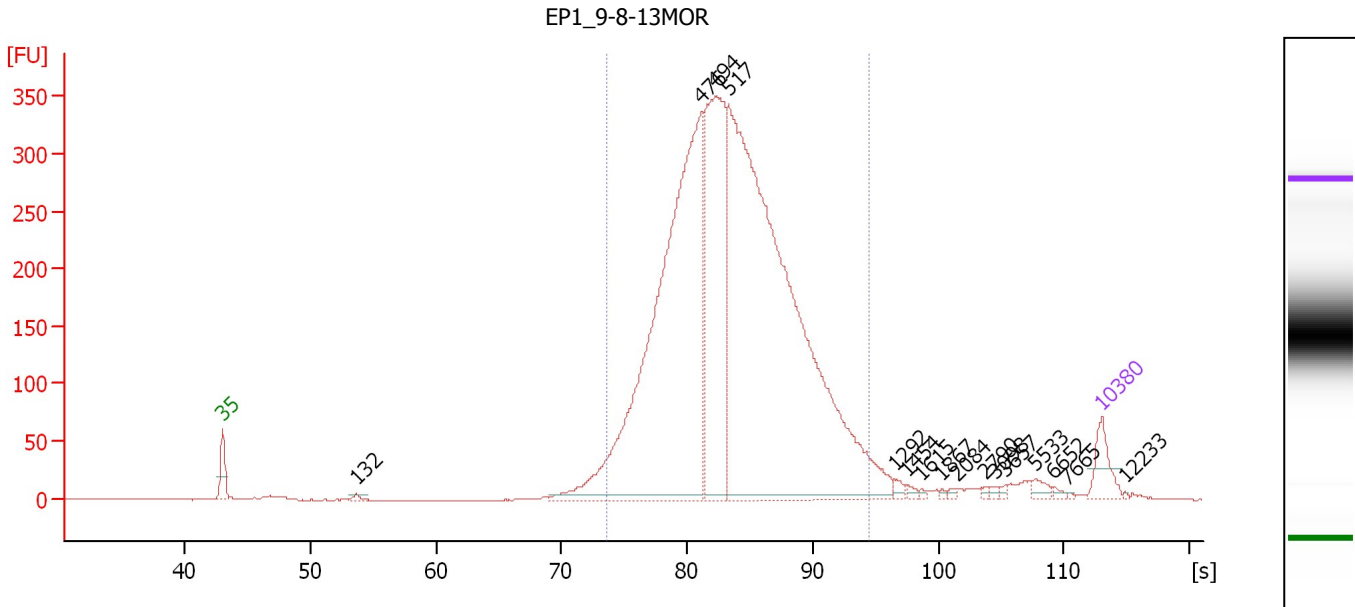
**Region table for sample 3 : WP1\_9-8-13MOR**

From [bp]	To [bp]	Average Size [bp]	Molarity [pmol/l]	Conc. [pg/μl]	Corr. Area	% of Total	Size distribution in CV [%]	Color
333	1,000	510	14,302.9	4,521.45	4,026.0	92	24.0	Blue

Assay Class: High Sensitivity DNA Assay  
 Data Path: C:\...ents and Settings\Bioanalyzer\2014-01-27\2014-01-27\_005.xad

Created: 1/27/2014 2:37:35 PM  
 Modified: 1/27/2014 3:19:39 PM

**Electropherogram Summary Continued ...**



**Overall Results for sample 4 : EP1\_9-8-13MOR**

Number of peaks found: 16                      Corr. Area 1: 4,961.1  
 Noise: 0.2

**Peak table for sample 4 : EP1\_9-8-13MOR**

Peak	Aligned Migration Time [s]	Size [bp]	Conc. [pg/μl]	Molarity [pmol/l]	Observations
1	43.00	35	125.00	5,411.3	Lower Marker
2	53.61	132	11.56	132.4	
3	81.17	476	2,345.27	7,457.9	
4	82.19	494	1,023.69	3,136.8	
5	83.31	517	3,230.61	9,471.2	
6	96.48	1,292	15.54	18.2	
7	97.55	1,454	10.99	11.5	
8	98.62	1,615	5.93	5.6	
9	100.29	1,867	4.72	3.8	
10	101.45	2,084	6.45	4.7	
11	103.76	2,790	6.23	3.4	
12	104.57	3,098	7.02	3.4	
13	105.30	3,657	6.94	2.9	
14	107.74	5,533	21.38	5.9	
15	109.19	6,652	8.29	1.9	
16	110.30	7,665	3.13	0.6	
17	113.00	10,380	75.00	10.9	Upper Marker
18	114.84	12,233	0.00	0.0	

**Region table for sample 4 : EP1\_9-8-13MOR**

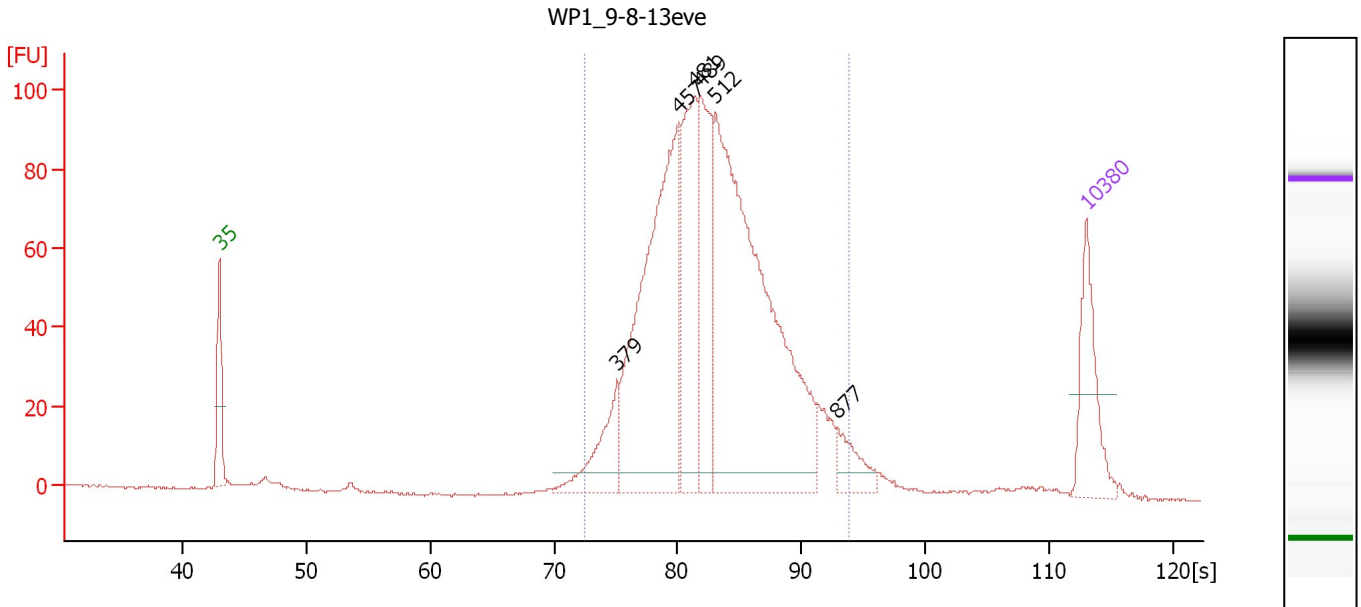
From [bp]	To [bp]	Average Size [bp]	Molarity [pmol/l]	Conc. [pg/μl]	Corr. Area	% of Total	Size distribution in CV [%]	Color
360	1,000	535	18,703.4	6,288.12	4,961.1	94	20.9	Blue



Assay Class: High Sensitivity DNA Assay  
 Data Path: C:\...ents and Settings\Bioanalyzer\2014-01-27\2014-01-27\_005.xad

Created: 1/27/2014 2:37:35 PM  
 Modified: 1/27/2014 3:19:39 PM

**Electropherogram Summary Continued ...**



**Overall Results for sample 5 : WP1\_9-8-13eve**

Number of peaks found: 6                      Corr. Area 1: 1,400.0  
 Noise: 0.3

**Peak table for sample 5 : WP1\_9-8-13eve**

Peak	Aligned Migration Time [s]	Size [bp]	Conc. [pg/μl]	Molarity [pmol/l]	Observations
1	43.00	35	125.00	5,411.3	Lower Marker
2	75.09	379	89.47	357.9	
3	80.08	457	469.26	1,554.3	
4	81.43	481	200.42	631.3	
5	81.86	489	180.22	558.8	
6	83.07	512	673.03	1,991.9	
7	92.88	877	39.80	68.8	
8	113.00	10,380	75.00	10.9	Upper Marker

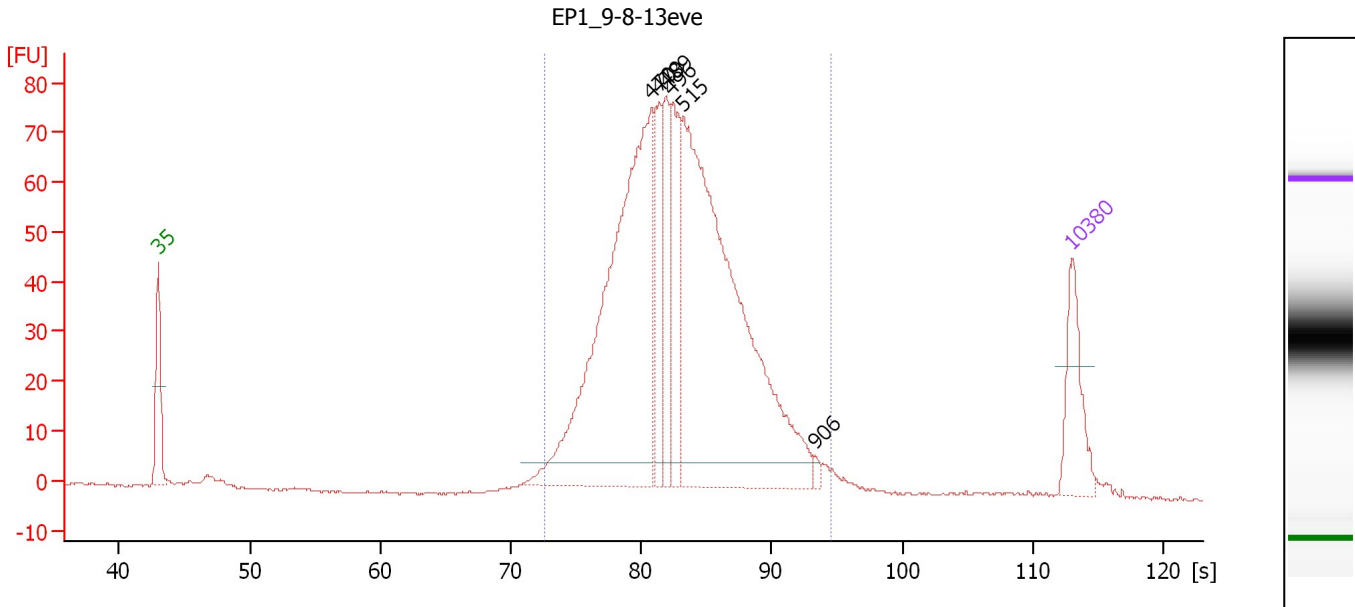
**Region table for sample 5 : WP1\_9-8-13eve**

From [bp]	To [bp]	Average Size [bp]	Molarity [pmol/l]	Conc. [pg/μl]	Corr. Area	% of Total	Size distribution in CV [%]	Color
347	945	518	5,052.5	1,648.73	1,400.0	95	20.4	Blue

Assay Class: High Sensitivity DNA Assay  
 Data Path: C:\...ents and Settings\Bioanalyzer\2014-01-27\2014-01-27\_005.xad

Created: 1/27/2014 2:37:35 PM  
 Modified: 1/27/2014 3:19:39 PM

**Electropherogram Summary Continued ...**



**Overall Results for sample 6 : EP1\_9-8-13eve**

Number of peaks found: 6                      Corr. Area 1: 1,074.2  
 Noise: 0.2

**Peak table for sample 6 : EP1\_9-8-13eve**

Peak	Aligned Migration Time [s]	Size [bp]	Conc. [pg/µl]	Molarity [pmol/l]	Observations
1	43.00	35	125.00	5,411.3	Lower Marker
2	80.79	470	739.58	2,384.8	
3	81.32	479	105.26	332.9	
4	81.89	489	105.68	327.4	
5	82.28	496	141.58	432.4	
6	83.21	515	838.87	2,469.3	
7	93.27	906	6.60	11.0	
8	113.00	10,380	75.00	10.9	Upper Marker

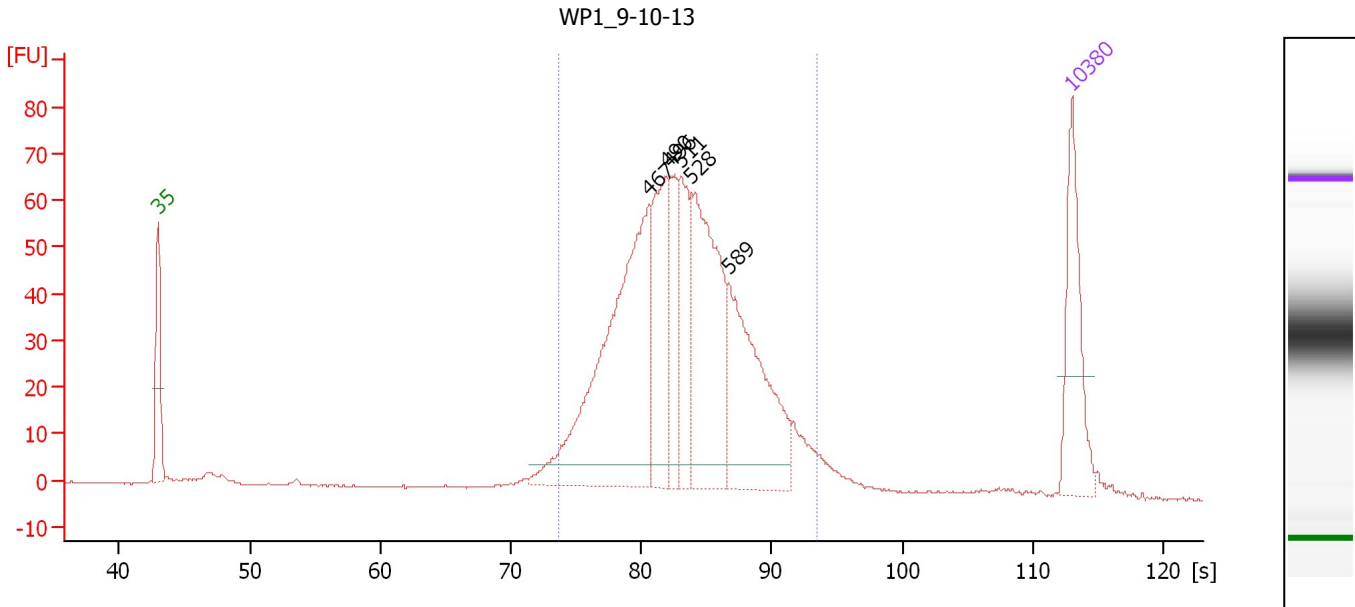
**Region table for sample 6 : EP1\_9-8-13eve**

From [bp]	To [bp]	Average Size [bp]	Molarity [pmol/l]	Conc. [pg/µl]	Corr. Area	% of Total	Size distribution in CV [%]	Color
349	1,000	518	6,071.9	1,987.76	1,074.2	96	19.9	Blue

Assay Class: High Sensitivity DNA Assay  
 Data Path: C:\...ents and Settings\Bioanalyzer\2014-01-27\2014-01-27\_005.xad

Created: 1/27/2014 2:37:35 PM  
 Modified: 1/27/2014 3:19:39 PM

**Electropherogram Summary Continued ...**



**Overall Results for sample 7 : WP1\_9-10-13**

Number of peaks found: 6      Corr. Area 1: 929.1  
 Noise: 0.1

**Peak table for sample 7 : WP1\_9-10-13**

Peak	Aligned Migration Time [s]	Size [bp]	Conc. [pg/μl]	Molarity [pmol/l]	Observations
1	43.00	35	125.00	5,411.3	Lower Marker
2	80.62	467	353.17	1,146.1	
3	81.92	490	133.99	414.6	
4	82.28	496	60.42	184.6	
5	83.04	511	90.65	268.7	
6	83.84	528	210.47	603.7	
7	86.71	589	171.36	441.1	
8	113.00	10,380	75.00	10.9	Upper Marker

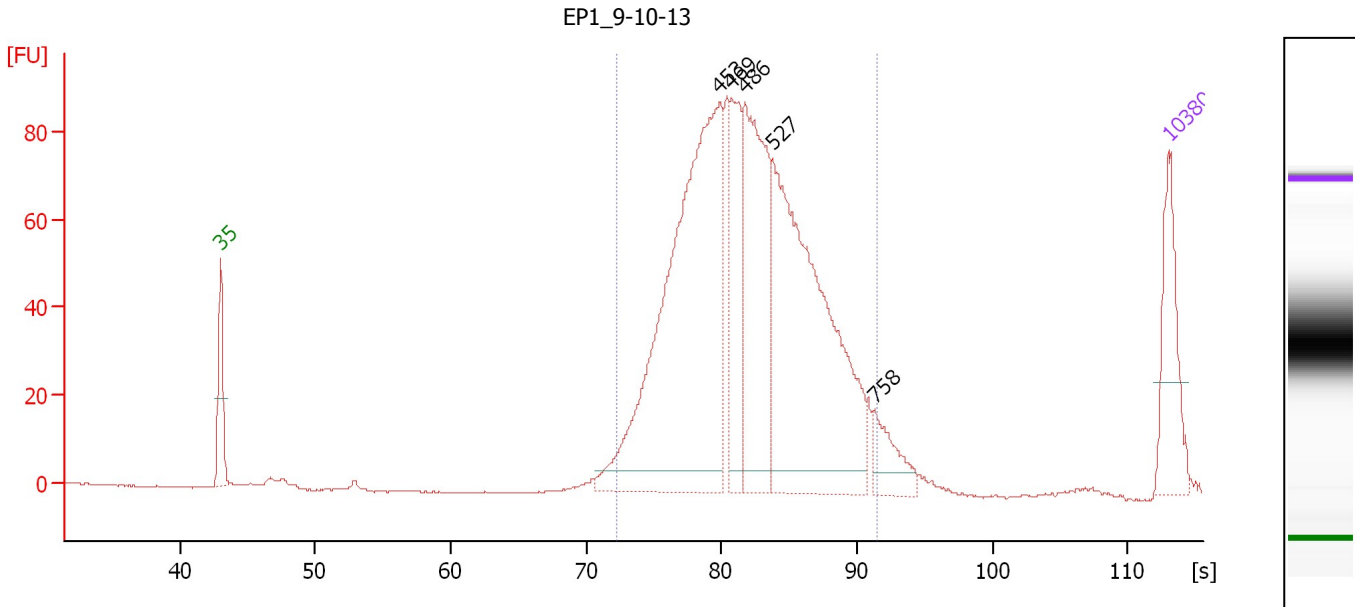
**Region table for sample 7 : WP1\_9-10-13**

From [bp]	To [bp]	Average Size [bp]	Molarity [pmol/l]	Conc. [pg/μl]	Corr. Area	% of Total	Size distribution in CV [%]	Color
362	917	525	3,180.3	1,056.67	929.1	92	19.0	Blue

Assay Class: High Sensitivity DNA Assay  
 Data Path: C:\...ents and Settings\Bioanalyzer\2014-01-27\2014-01-27\_005.xad

Created: 1/27/2014 2:37:35 PM  
 Modified: 1/27/2014 3:19:39 PM

**Electropherogram Summary Continued ...**



**Overall Results for sample 8 : EP1\_9-10-13**

Number of peaks found: 5      Corr. Area 1: 1,326.8  
 Noise: 0.1

**Peak table for sample 8 : EP1\_9-10-13**

Peak	Aligned Migration Time [s]	Size [bp]	Conc. [pg/μl]	Molarity [pmol/l]	Observations
1	43.00	35	125.00	5,411.3	Lower Marker
2	79.80	453	645.79	2,161.9	
3	80.76	469	126.85	409.5	
4	81.71	486	268.84	838.2	
5	83.77	527	496.50	1,428.5	
6	91.27	758	49.94	99.8	
7	113.00	10,380	75.00	10.9	Upper Marker

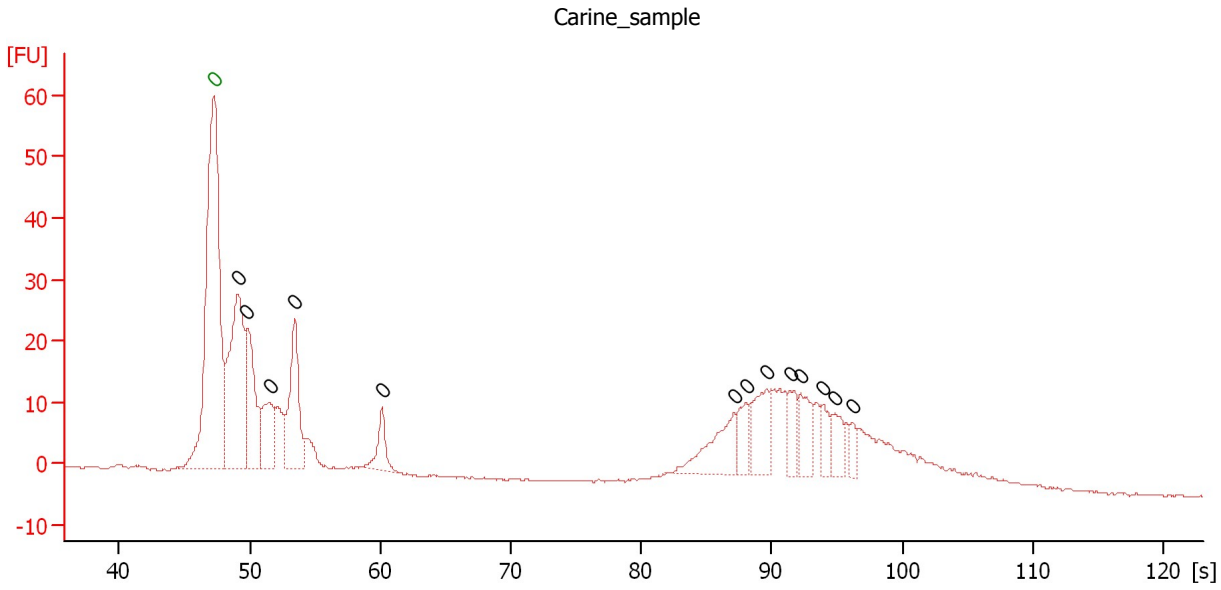
**Region table for sample 8 : EP1\_9-10-13**

From [bp]	To [bp]	Average Size [bp]	Molarity [pmol/l]	Conc. [pg/μl]	Corr. Area	% of Total	Size distribution in CV [%]	Color
344	771	495	4,874.6	1,533.86	1,326.8	97	17.1	Blue

Assay Class: High Sensitivity DNA Assay  
 Data Path: C:\...ents and Settings\Bioanalyzer\2014-01-27\2014-01-27\_005.xad

Created: 1/27/2014 2:37:35 PM  
 Modified: 1/27/2014 3:19:39 PM

**Electropherogram Summary Continued ...**



**Overall Results for sample 9 : Carine\_sample**

Number of peaks found: 13                      Noise: 0.2

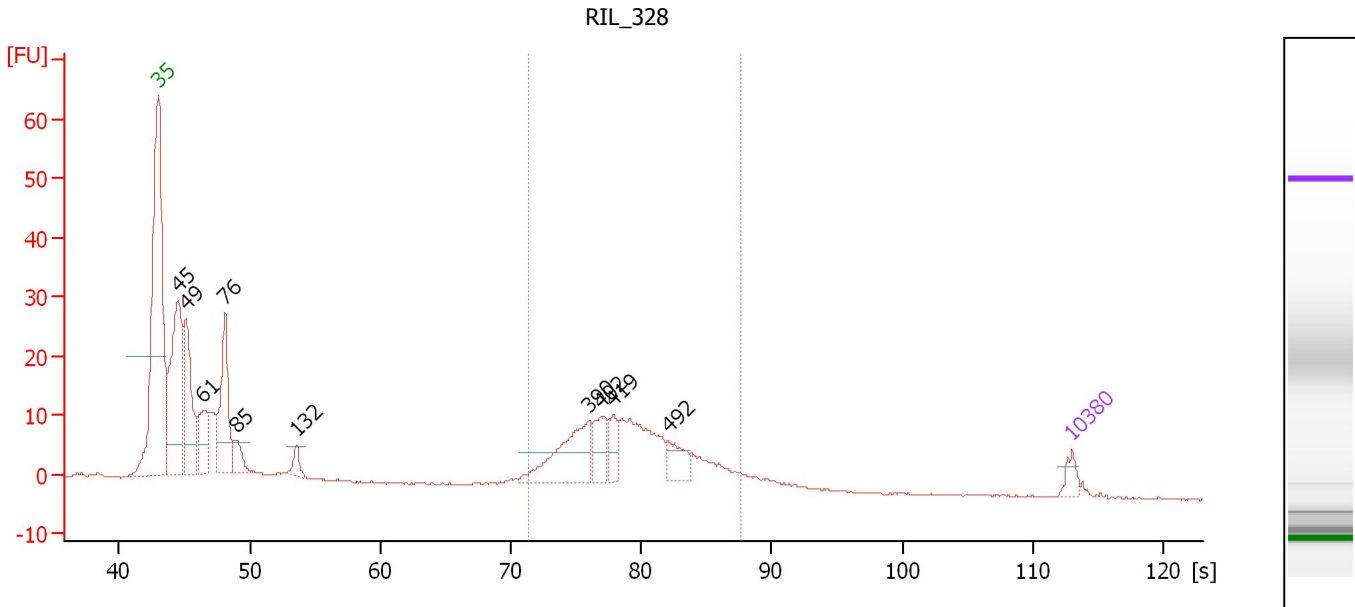
**Peak table for sample 9 : Carine\_sample**

Peak	Aligned Migration Time [s]	Size [bp]	Conc. [pg/μl]	Molarity [pmol/l]	Observations
1	47.30	0	0.00	0.0	Lower Marker
2	49.10	0	0.00	0.0	
3	49.80	0	0.00	0.0	
4	51.55	0	0.00	0.0	
5	53.45	0	0.00	0.0	
6	60.15	0	0.00	0.0	
7	87.10	0	0.00	0.0	
8	88.05	0	0.00	0.0	
9	89.65	0	0.00	0.0	
10	91.40	0	0.00	0.0	
11	92.25	0	0.00	0.0	
12	93.85	0	0.00	0.0	
13	94.80	0	0.00	0.0	
14	96.20	0	0.00	0.0	

Assay Class: High Sensitivity DNA Assay  
 Data Path: C:\...ents and Settings\Bioanalyzer\2014-01-27\2014-01-27\_005.xad

Created: 1/27/2014 2:37:35 PM  
 Modified: 1/27/2014 3:19:39 PM

**Electropherogram Summary Continued ...**



**Overall Results for sample 10 : RIL\_328**

Number of peaks found: 10      Corr. Area 1: 155.4  
 Noise: 0.1

**Peak table for sample 10 : RIL\_328**

Peak	Aligned Migration Time [s]	Size [bp]	Conc. [pg/μl]	Molarity [pmol/l]	Observations
1	43.00	35	125.00	5,411.3	Lower Marker
2	44.52	45	1,704.02	57,308.1	
3	45.12	49	1,025.61	31,705.5	
4	46.45	61	418.06	10,378.4	
5	48.11	76	952.42	18,874.9	
6	48.98	85	213.20	3,818.7	
7	53.58	132	130.78	1,502.1	
8	76.02	390	676.19	2,625.1	
9	76.90	402	254.25	959.2	
10	77.86	419	155.04	561.3	
11	82.05	492	212.87	655.7	
12	113.00	10,380	75.00	10.9	Upper Marker

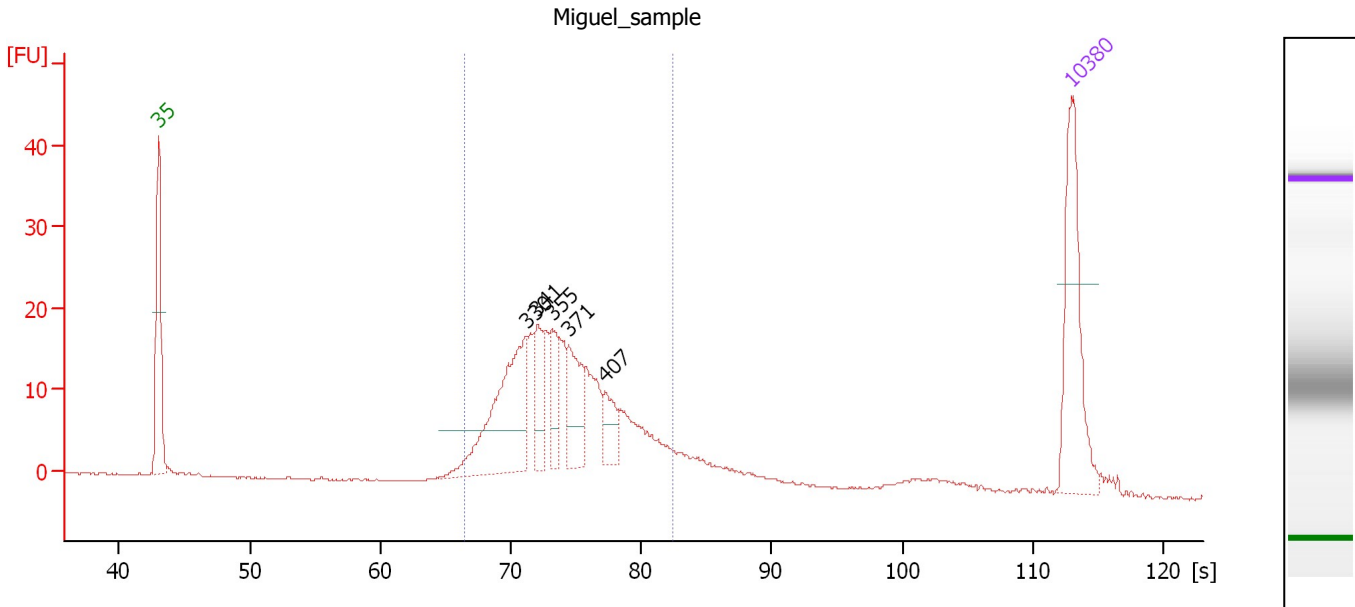
**Region table for sample 10 : RIL\_328**

From [bp]	To [bp]	Average Size [bp]	Molarity [pmol/l]	Conc. [pg/μl]	Corr. Area	% of Total	Size distribution in CV [%]	Color
332	610	443	9,391.7	2,674.24	155.4	39	14.7	Blue

Assay Class: High Sensitivity DNA Assay  
 Data Path: C:\...ents and Settings\Bioanalyzer\2014-01-27\2014-01-27\_005.xad

Created: 1/27/2014 2:37:35 PM  
 Modified: 1/27/2014 3:19:39 PM

**Electropherogram Summary Continued ...**



**Overall Results for sample 11 : Miguel\_sample**

Number of peaks found: 5                      Corr. Area 1: 252.2  
 Noise: 0.1

**Peak table for sample 11 : Miguel\_sample**

Peak	Aligned Migration Time [s]	Size [bp]	Conc. [pg/μl]	Molarity [pmol/l]	Observations
1	43.00	35	125.00	5,411.3	Lower Marker
2	71.17	330	128.88	591.8	
3	72.04	341	37.42	166.3	
4	73.15	355	32.91	140.6	
5	74.44	371	43.37	177.2	
6	77.22	407	22.00	81.9	
7	113.00	10,380	75.00	10.9	Upper Marker

**Region table for sample 11 : Miguel\_sample**

From [bp]	To [bp]	Average Size [bp]	Molarity [pmol/l]	Conc. [pg/μl]	Corr. Area	% of Total	Size distribution in CV [%]	Color
274	498	367	2,061.6	488.89	252.2	83	13.9	Blue

Assay Class: High Sensitivity DNA Assay  
Data Path: C:\...ents and Settings\Bioanalyzer\2014-01-27\2014-01-27\_005.xad

Created: 1/27/2014 2:37:35 PM  
Modified: 1/27/2014 3:19:39 PM

**Gel Image**

