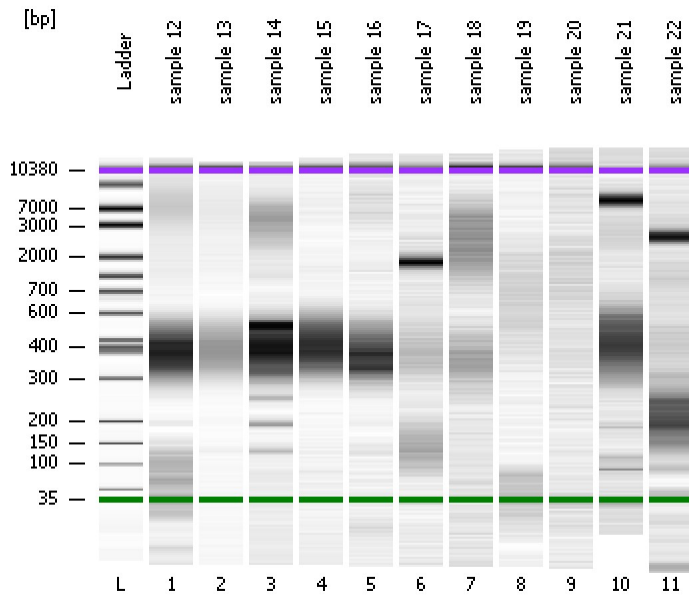


Assay Class: High Sensitivity DNA Assay  
Data Path: C:\...ents and Settings\Bioanalyzer\2014-01-29\2014-01-29\_001.xad

Created: 1/29/2014 12:27:53 PM  
Modified: 1/29/2014 1:13:49 PM

**Electrophoresis File Run Summary**



Instrument Information:

Instrument Name: DE13701086      Firmware: C.01.069  
Serial#: DE13701086      Type: G2938B

Assay Information:

Assay Origin Path: C:\Program Files\Agilent\2100 bioanalyzer\2100 expert\assays\dsDNA\High Sensitivity DNA.xsy  
Assay Class: High Sensitivity DNA Assay  
Version: 1.03  
Assay Comments: Copyright © 2003-2010 Agilent Technologies

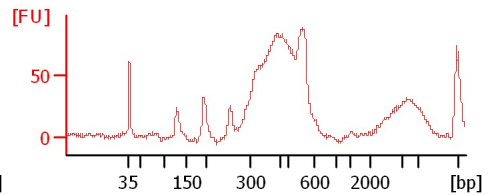
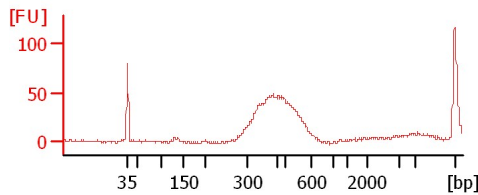
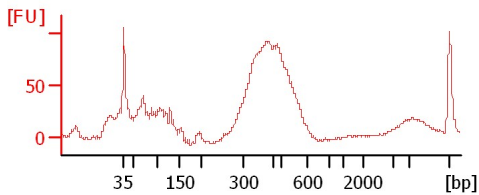
Chip Information:

Chip Lot #:   
Reagent Kit Lot #:   
Chip Comments:

sample 12

sample 13

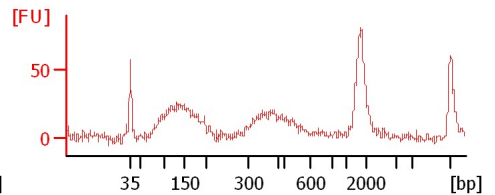
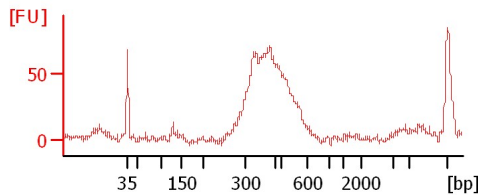
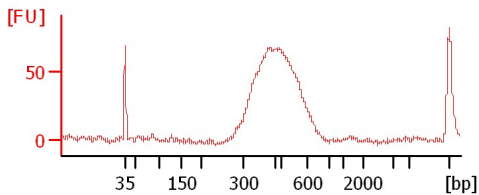
sample 14



sample 15

sample 16

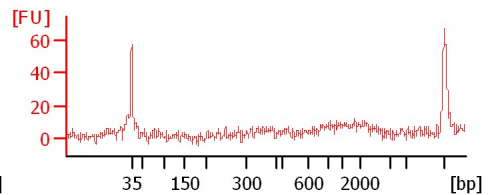
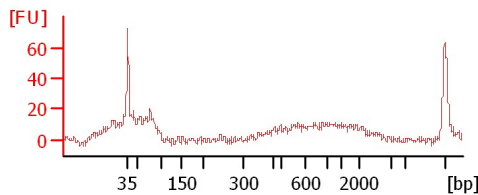
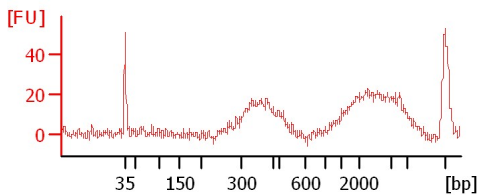
sample 17



sample 18

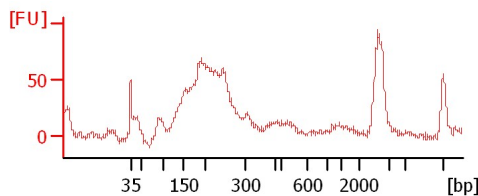
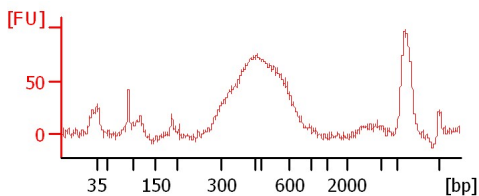
sample 19

sample 20



sample 21

sample 22



Assay Class: High Sensitivity DNA Assay  
 Data Path: C:\...ents and Settings\Bioanalyzer\2014-01-29\2014-01-29\_001.xad

Created: 1/29/2014 12:27:53 PM  
 Modified: 1/29/2014 1:13:49 PM

**Electrophoresis File Run Summary (Chip Summary)**

Sample Name	Sample Comment	Rest. Digest	Status	Observation	Result Label	Result Color
sample 12		<input type="checkbox"/>	✓			
sample 13		<input type="checkbox"/>	✓			
sample 14		<input type="checkbox"/>	✓			
sample 15		<input type="checkbox"/>	✓			
sample 16		<input type="checkbox"/>	✓			
sample 17		<input type="checkbox"/>	✓			
sample 18		<input type="checkbox"/>	✓			
sample 19		<input type="checkbox"/>	✓			
sample 20		<input type="checkbox"/>	✓			
sample 21		<input type="checkbox"/>	✓			
sample 22		<input type="checkbox"/>	✓			
Ladder		<input type="checkbox"/>	✓			

**Chip Lot #**

**Reagent Kit Lot #**

**Chip Comments :**

Assay Class: High Sensitivity DNA Assay  
Data Path: C:\...ents and Settings\Bioanalyzer\2014-01-29\2014-01-29\_001.xad

Created: 1/29/2014 12:27:53 PM  
Modified: 1/29/2014 1:13:49 PM

**Electrophoresis Assay Details**

**General Analysis Settings**

Number of Available Sample and Ladder Wells (Max.) : 12  
Minimum Visible Range [s] : 32  
Maximum Visible Range [s] : 138  
Start Analysis Time Range [s] : 33  
End Analysis Time Range [s] : 137.5  
Ladder Concentration [pg/μl] : 1950  
Uses Standard Area for Ladder Fragments  
Lower Marker Concentration [pg/μl] : 125  
Upper Marker Concentration [pg/μl] : 75  
Used Upper Marker for Quantitation  
Standard Curve Fit is Point to Point  
Show Data Aligned to Lower and Upper Marker

**Integrator Settings**

Integration Start Time [s] : 33.05  
Integration End Time [s] : 137  
Slope Threshold : 0.8  
Height Threshold [FU] : 5  
Area Threshold : 0.1  
Width Threshold [s] : 0.6  
Baseline Plateau [s] : 0.5

**Filter Settings**

Filter Width [s] : 0.5  
Polynomial Order : 4

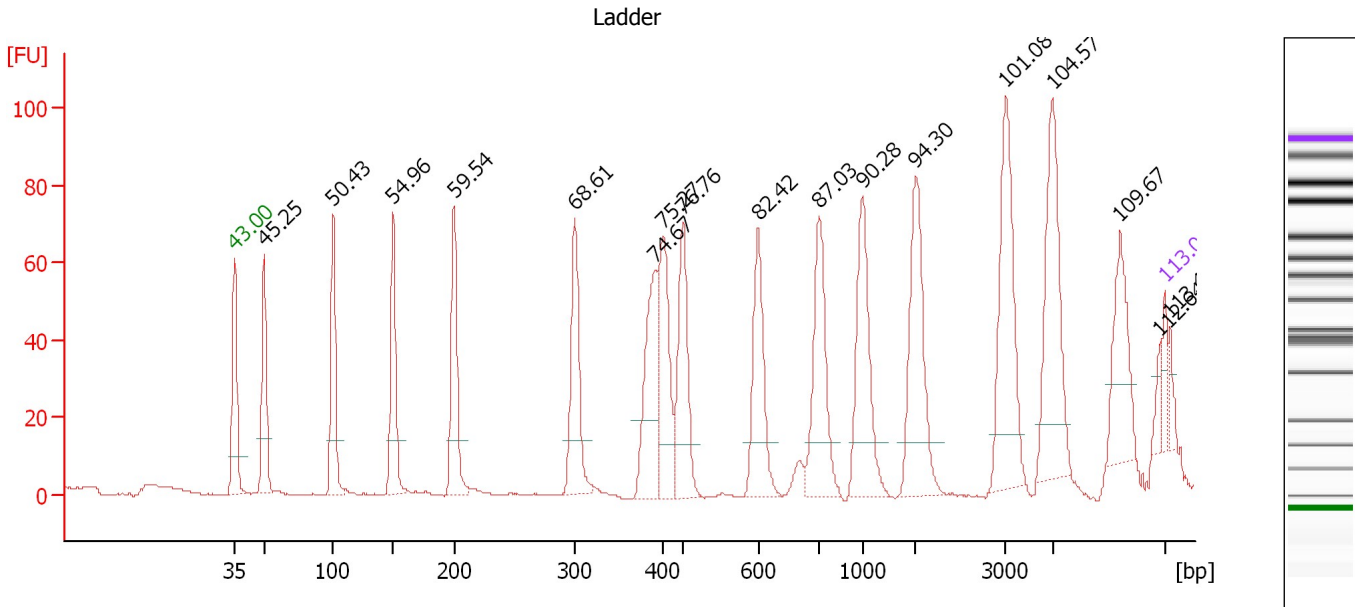
**Ladder**

Ladder Peak	Size	Area
1	35	160
2	50	210
3	100	208
4	150	221
5	200	242
6	300	270
7	400	305
8	500	306
9	600	336
10	700	321
11	1000	366
12	2000	413
13	3000	411
14	7000	400
15	10380	214

Assay Class: High Sensitivity DNA Assay  
 Data Path: C:\...ents and Settings\Bioanalyzer\2014-01-29\2014-01-29\_001.xad

Created: 1/29/2014 12:27:53 PM  
 Modified: 1/29/2014 1:13:49 PM

**Electropherogram Summary**



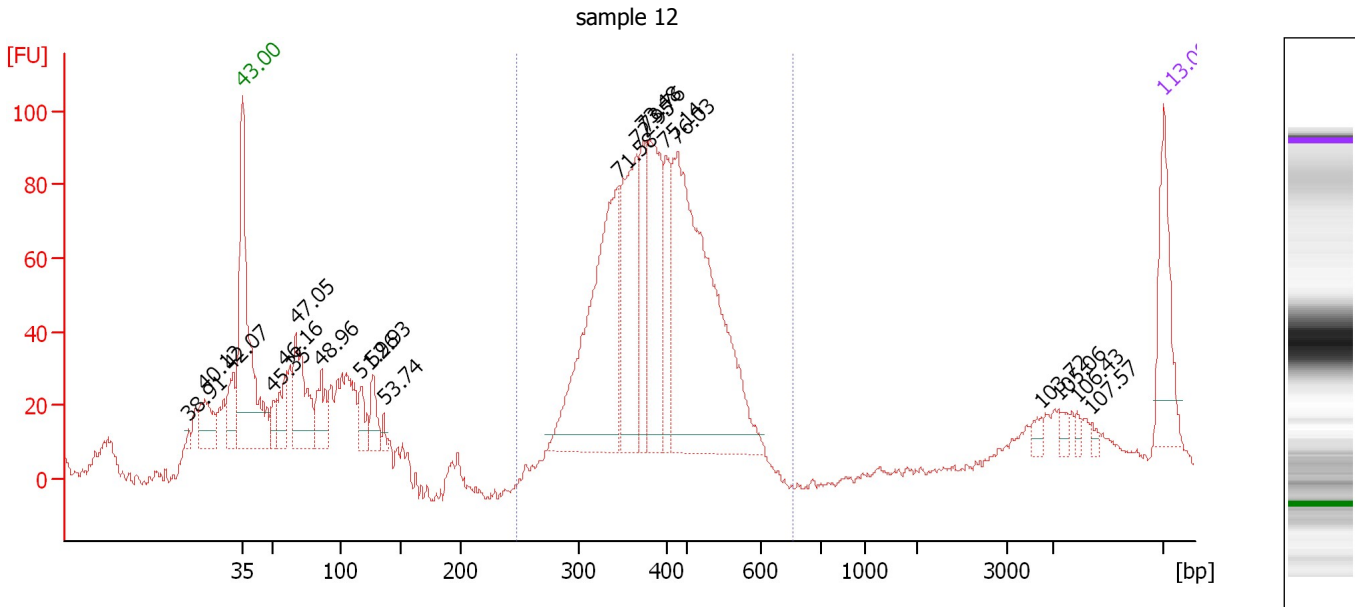
**Peak table for Ladder**

Peak	Aligned Migration Time [s]	Size [bp]	Conc. [pg/μl]	Molarity [pmol/l]	Observations
1	43.00	35	125.00	5,411.3	Lower Marker
2	45.25	50	150.00	4,545.5	Ladder Peak
3	50.43	100	150.00	2,272.7	Ladder Peak
4	54.96	150	150.00	1,515.2	Ladder Peak
5	59.54	200	150.00	1,136.4	Ladder Peak
6	68.61	300	150.00	757.6	Ladder Peak
7	74.67	391	0.00	0.0	
8	75.27	400	150.00	568.2	Ladder Peak
9	76.76	500	150.00	454.5	Ladder Peak
10	82.42	600	150.00	378.8	Ladder Peak
11	87.03	700	150.00	324.7	Ladder Peak
12	90.28	1,000	150.00	227.3	Ladder Peak
13	94.30	2,000	150.00	113.6	Ladder Peak
14	101.08	3,000	150.00	75.8	Ladder Peak
15	104.57	7,000	150.00	32.5	Ladder Peak
16	109.67	9,044	0.00	0.0	
17	112.64	10,235	0.00	0.0	
18	113.00	10,380	75.00	10.9	Upper Marker
19	113.40	10,541	0.00	0.0	

Assay Class: High Sensitivity DNA Assay  
 Data Path: C:\...ents and Settings\Bioanalyzer\2014-01-29\2014-01-29\_001.xad

Created: 1/29/2014 12:27:53 PM  
 Modified: 1/29/2014 1:13:49 PM

**Electropherogram Summary Continued ...**



**Overall Results for sample 1 : sample 12**

Number of peaks found: 20                      Corr. Area 1: 1,194.8  
 Noise: 1.2

**Peak table for sample 1 : sample 12**

Peak	Aligned Migration Time [s]	Size [bp]	Conc. [pg/μl]	Molarity [pmol/l]	Observations
1	38.91	21	0.00	0.0	
2	40.12	25	0.00	0.0	
3	42.07	32	0.00	0.0	
4	43.00	35	125.00	5,411.3	Lower Marker
5	45.35	51	29.36	872.2	
6	46.16	59	57.35	1,477.2	
7	47.05	67	150.74	3,386.9	
8	48.96	86	69.60	1,228.7	
9	51.96	117	37.58	487.1	
10	52.93	128	44.40	527.1	
11	53.74	137	10.49	116.3	
12	71.58	345	391.46	1,721.5	
13	72.95	365	199.46	827.5	
14	73.48	373	84.22	342.0	
15	73.76	377	203.91	818.6	
16	75.14	398	88.00	335.0	
17	76.03	451	533.84	1,791.8	
18	103.72	6,023	9.02	2.3	
19	105.06	7,194	9.96	2.1	
20	106.43	7,747	5.61	1.1	
21	107.57	8,202	5.27	1.0	
22	113.07	10,380	75.00	10.9	Upper Marker

Assay Class: High Sensitivity DNA Assay  
Data Path: C:\...ents and Settings\Bioanalyzer\2014-01-29\2014-01-29\_001.xad

Created: 1/29/2014 12:27:53 PM  
Modified: 1/29/2014 1:13:49 PM

**Electropherogram Summary Continued ...**

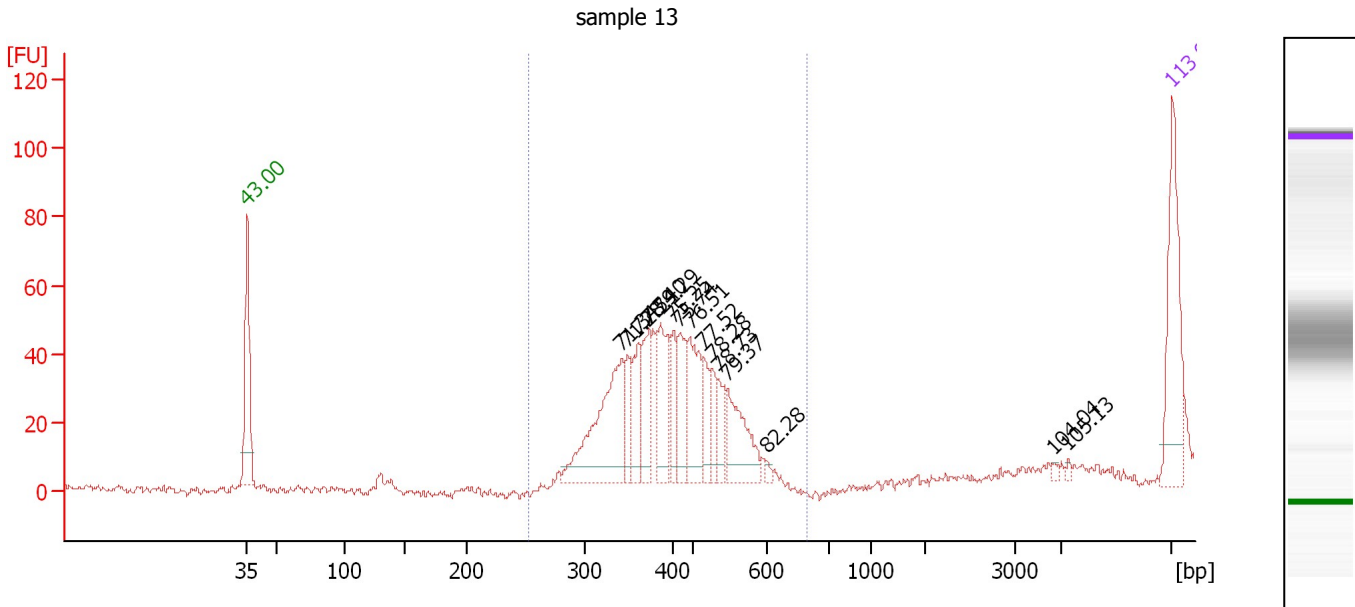
... Region table for sample 1 : sample 12

From [bp]	To [bp]	Average Size [bp]	Molarity [pmol/l]	Conc. [pg/μl]	Corr. Area	% of Total	Size distribution in CV [%]	Color
247	651	413	6,182.6	1,598.74	1,194.8	63	20.6	■

Assay Class: High Sensitivity DNA Assay  
 Data Path: C:\...ents and Settings\Bioanalyzer\2014-01-29\2014-01-29\_001.xad

Created: 1/29/2014 12:27:53 PM  
 Modified: 1/29/2014 1:13:49 PM

**Electropherogram Summary Continued ...**



**Overall Results for sample 2 : sample 13**

Number of peaks found: 15      Corr. Area 1: 448.0  
 Noise: 1.3

**Peak table for sample 2 : sample 13**

Peak	Aligned Migration Time [s]	Size [bp]	Conc. [pg/μl]	Molarity [pmol/l]	Observations
1	43.00	35	125.00	5,411.3	Lower Marker
2	71.34	341	150.68	669.5	
3	71.78	348	32.61	142.1	
4	72.59	360	46.14	194.3	
5	73.40	372	46.96	191.3	
6	74.29	385	61.59	242.2	
7	75.25	400	34.48	130.7	
8	75.74	432	49.32	173.1	
9	76.51	483	63.72	199.8	
10	77.52	513	28.73	84.8	
11	78.28	527	23.93	68.8	
12	78.73	535	24.39	69.1	
13	79.37	546	62.08	172.2	
14	82.28	598	3.81	9.7	
15	104.04	6,389	2.09	0.5	
16	105.13	7,223	2.23	0.5	
17	113.00	10,380	75.00	10.9	Upper Marker

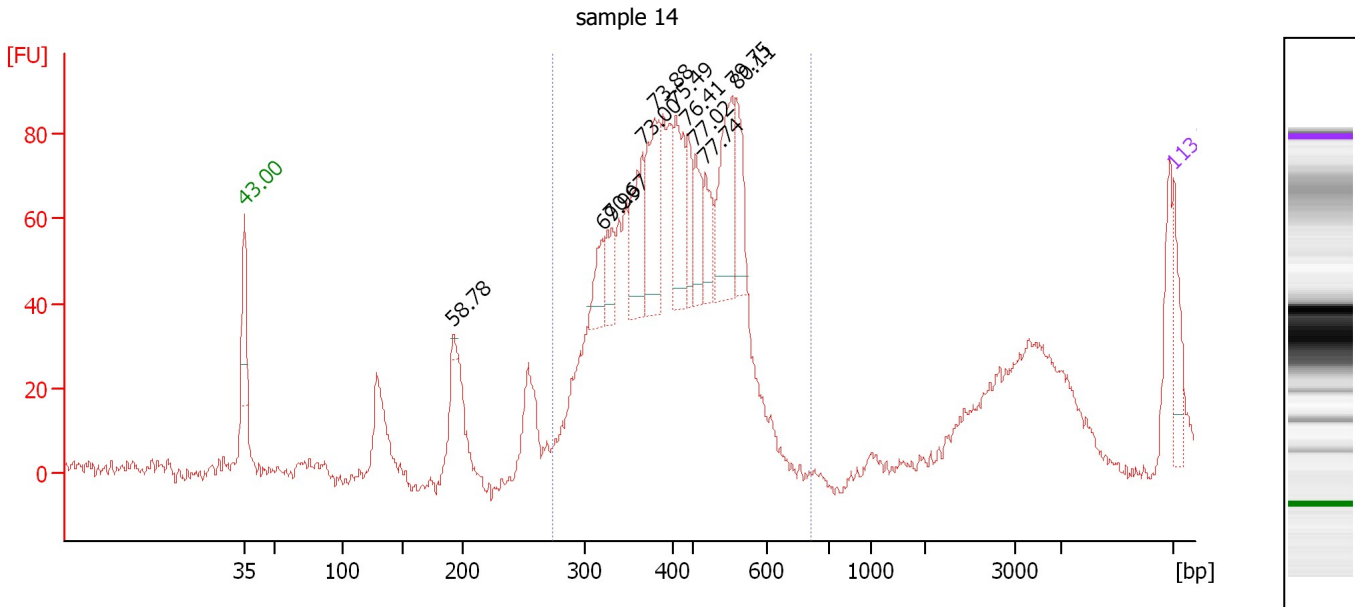
**Region table for sample 2 : sample 13**

From [bp]	To [bp]	Average Size [bp]	Molarity [pmol/l]	Conc. [pg/μl]	Corr. Area	% of Total	Size distribution in CV [%]	Color
252	666	419	1,888.5	501.03	448.0	99	18.9	Blue

Assay Class: High Sensitivity DNA Assay  
 Data Path: C:\...ents and Settings\Bioanalyzer\2014-01-29\2014-01-29\_001.xad

Created: 1/29/2014 12:27:53 PM  
 Modified: 1/29/2014 1:13:49 PM

**Electropherogram Summary Continued ...**



**Overall Results for sample 3 : sample 14**

Number of peaks found: 11                      Corr. Area 1: 1,114.5  
 Noise: 2.1

**Peak table for sample 3 : sample 14**

Peak	Aligned Migration Time [s]	Size [bp]	Conc. [pg/μl]	Molarity [pmol/l]	Observations
1	43.00	35	125.00	5,411.3	Lower Marker
2	58.78	192	14.06	111.0	
3	69.99	321	92.91	438.9	
4	70.67	331	92.07	421.5	
5	73.00	366	197.87	819.3	
6	73.88	379	238.75	954.0	
7	75.49	415	193.24	705.9	
8	76.41	477	88.81	282.1	
9	77.02	505	102.82	308.7	
10	77.74	517	93.37	273.4	
11	79.75	553	239.21	655.6	
12	80.11	559	123.71	335.2	
13	113.00	10,380	75.00	10.9	Upper Marker

**Region table for sample 3 : sample 14**

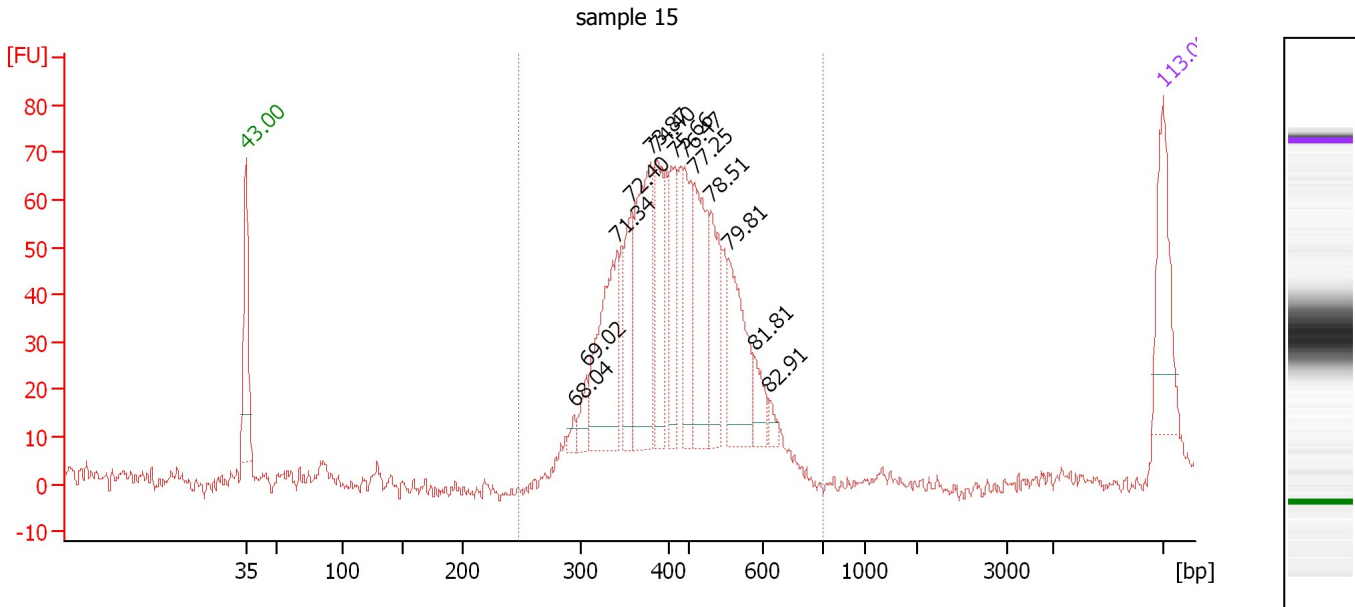
From [bp]	To [bp]	Average Size [bp]	Molarity [pmol/l]	Conc. [pg/μl]	Corr. Area	% of Total	Size distribution in CV [%]	Color
275	671	435	13,640.9	3,697.68	1,114.5	83	20.9	Blue



Assay Class: High Sensitivity DNA Assay  
 Data Path: C:\...ents and Settings\Bioanalyzer\2014-01-29\2014-01-29\_001.xad

Created: 1/29/2014 12:27:53 PM  
 Modified: 1/29/2014 1:13:49 PM

**Electropherogram Summary Continued ...**



**Overall Results for sample 4 : sample 15**

Number of peaks found: 13                      Corr. Area 1: 913.5  
 Noise: 1.4

**Peak table for sample 4 : sample 15**

Peak	Aligned Migration Time [s]	Size [bp]	Conc. [pg/μl]	Molarity [pmol/l]	Observations
1	43.00	35	125.00	5,411.3	Lower Marker
2	68.04	294	10.36	53.4	
3	69.02	306	24.73	122.4	
4	71.34	341	167.78	745.4	
5	72.40	357	79.02	335.4	
6	73.87	379	187.49	749.7	
7	74.40	387	108.68	425.6	
8	75.66	426	79.67	283.3	
9	76.47	481	90.85	286.2	
10	77.25	509	115.78	344.9	
11	78.51	531	94.69	270.2	
12	79.81	554	106.04	290.0	
13	81.81	589	27.40	70.4	
14	82.91	611	10.07	25.0	
15	113.00	10,380	75.00	10.9	Upper Marker

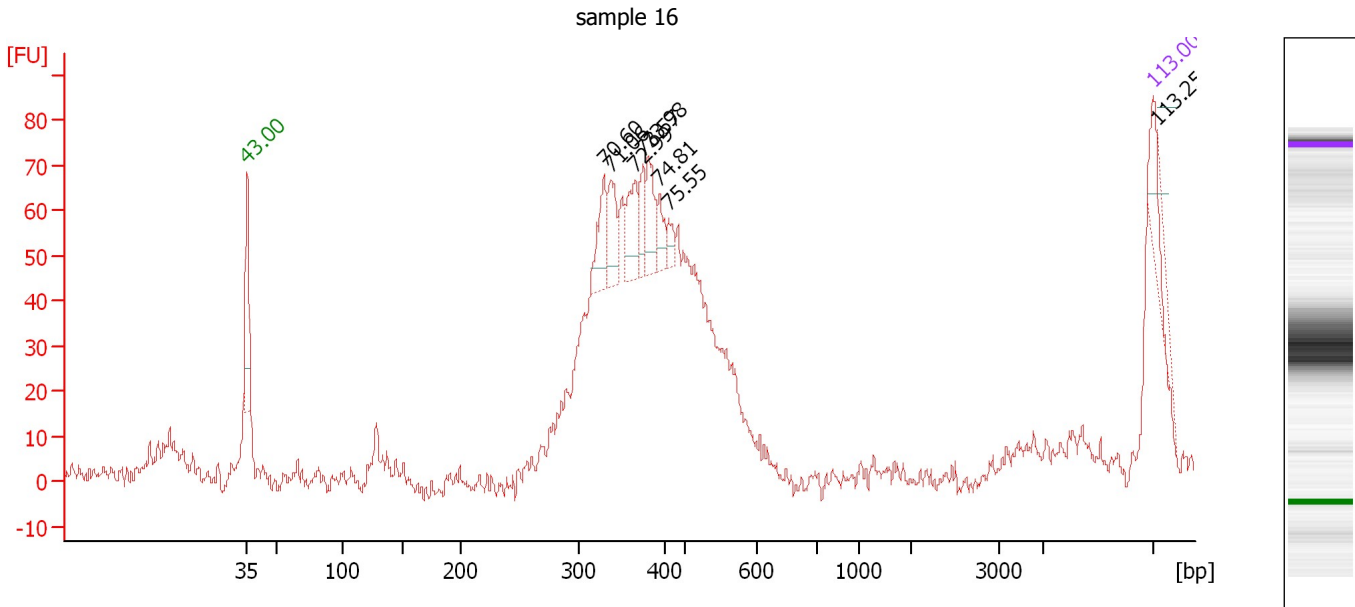
**Region table for sample 4 : sample 15**

From [bp]	To [bp]	Average Size [bp]	Molarity [pmol/l]	Conc. [pg/μl]	Corr. Area	% of Total	Size distribution in CV [%]	Color
247	706	443	5,038.6	1,388.88	913.5	99	21.0	Blue

Assay Class: High Sensitivity DNA Assay  
 Data Path: C:\...ents and Settings\Bioanalyzer\2014-01-29\2014-01-29\_001.xad

Created: 1/29/2014 12:27:53 PM  
 Modified: 1/29/2014 1:13:49 PM

**Electropherogram Summary Continued ...**



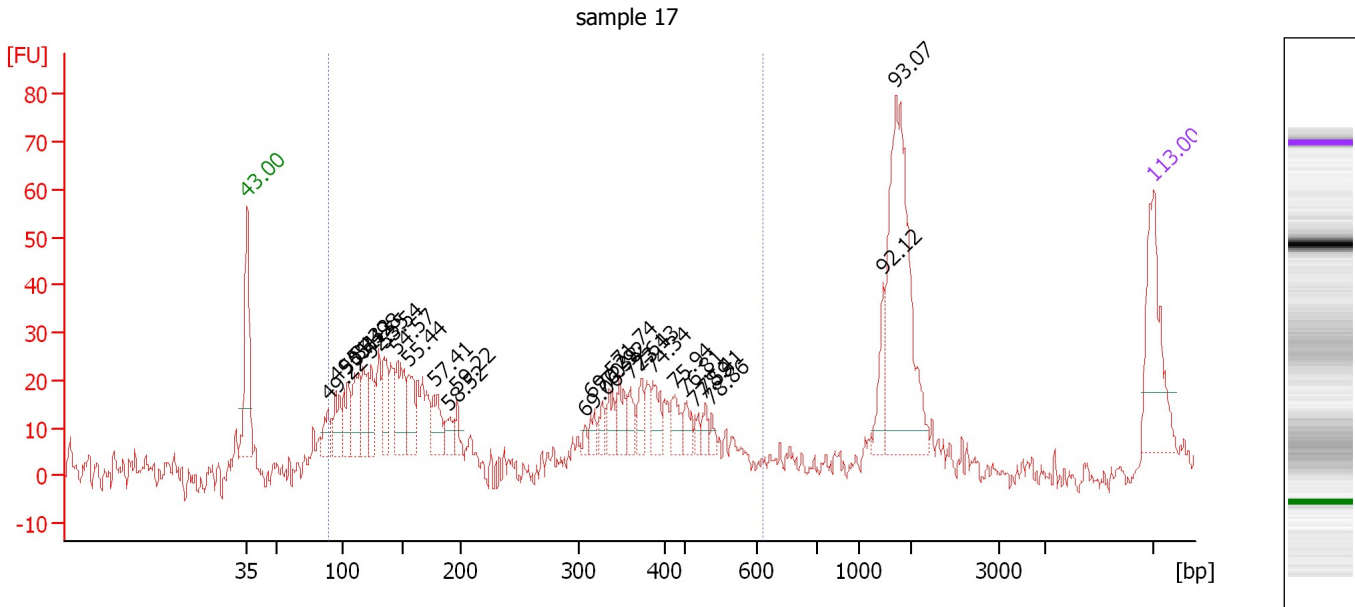
**Peak table for sample 5 : sample 16**

Peak	Aligned Migration Time [s]	Size [bp]	Conc. [pg/μl]	Molarity [pmol/l]	Observations
1	43.00	35	125.00	5,411.3	Lower Marker
2	70.60	330	141.20	648.4	
3	71.06	337	124.47	560.0	
4	72.99	366	131.69	545.4	
5	73.57	374	84.39	341.4	
6	73.98	381	116.85	465.1	
7	74.81	393	64.24	247.6	
8	75.55	419	36.34	131.5	
9	113.00	10,380	75.00	10.9	Upper Marker
10	113.25	10,479	0.00	0.0	

Assay Class: High Sensitivity DNA Assay  
 Data Path: C:\...ents and Settings\Bioanalyzer\2014-01-29\2014-01-29\_001.xad

Created: 1/29/2014 12:27:53 PM  
 Modified: 1/29/2014 1:13:49 PM

**Electropherogram Summary Continued ...**



**Peak table for sample 6 : sample 17**

Peak	Aligned Migration Time [s]	Size [bp]	Conc. [pg/μl]	Molarity [pmol/l]	Observations
1	43.00	35	125.00	5,411.3	Lower Marker
2	49.22	88	29.63	508.1	
3	49.84	94	41.37	664.7	
4	50.74	103	47.80	700.0	
5	51.32	110	55.04	759.3	
6	51.98	117	52.03	673.3	
7	52.55	123	43.32	531.6	
8	53.54	134	48.53	547.3	
9	54.57	146	69.31	720.8	
10	55.44	155	44.84	437.8	
11	57.41	177	40.75	349.3	
12	58.52	189	22.50	180.5	
13	59.22	197	15.52	119.6	
14	69.06	307	6.27	30.9	
15	69.52	314	14.71	71.1	
16	70.38	327	14.57	67.6	
17	70.92	335	23.39	105.9	
18	71.74	347	29.57	129.1	
19	72.61	360	18.48	77.8	
20	73.43	372	21.04	85.6	
21	74.34	386	29.24	114.8	
22	75.94	445	21.92	74.6	
23	76.81	501	17.84	54.0	
24	77.59	515	8.43	24.8	
25	78.41	529	10.90	31.2	
26	78.86	537	7.45	21.0	
27	92.12	1,459	25.30	26.3	
28	93.07	1,695	198.43	177.4	
29	113.00	10,380	75.00	10.9	Upper Marker

Assay Class: High Sensitivity DNA Assay  
Data Path: C:\...ents and Settings\Bioanalyzer\2014-01-29\2014-01-29\_001.xad

Created: 1/29/2014 12:27:53 PM  
Modified: 1/29/2014 1:13:49 PM

**Electropherogram Summary Continued ...**

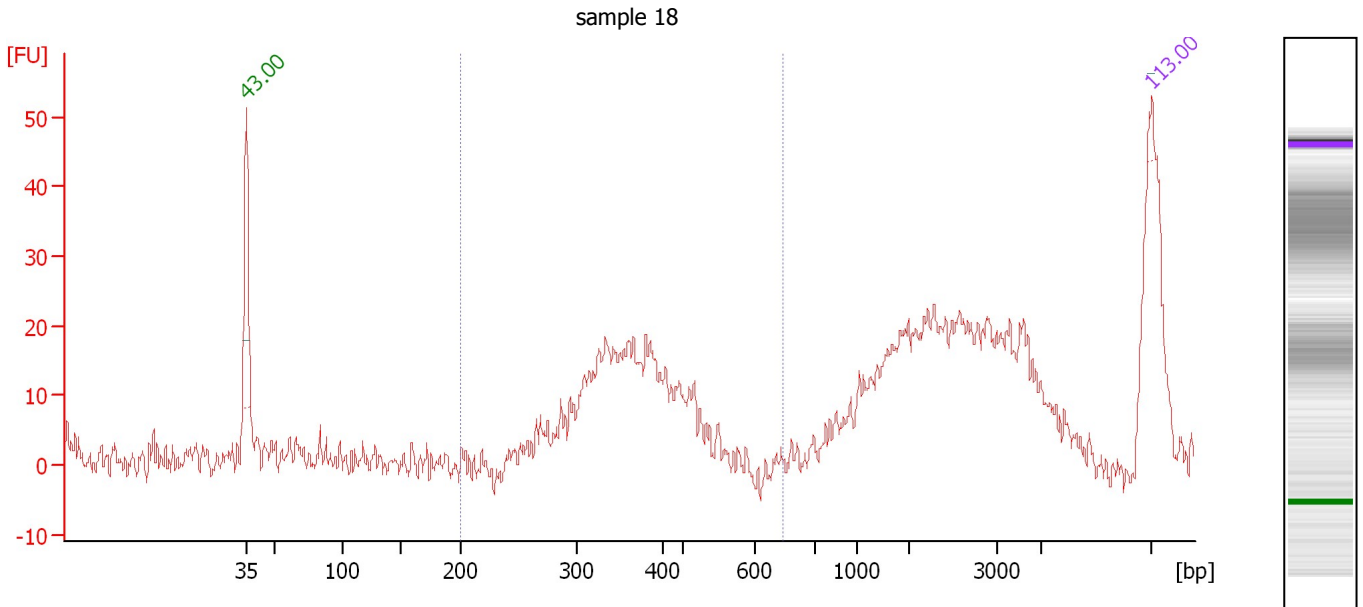
... Region table for sample 6 : sample 17

From [bp]	To [bp]	Average Size [bp]	Molarity [pmol/l]	Conc. [pg/μl]	Corr. Area	% of Total	Size distribution in CV [%]	Color
89	610	257	9,349.7	1,028.81	482.6	69	55.3	■

Assay Class: High Sensitivity DNA Assay  
 Data Path: C:\...ents and Settings\Bioanalyzer\2014-01-29\2014-01-29\_001.xad

Created: 1/29/2014 12:27:53 PM  
 Modified: 1/29/2014 1:13:49 PM

**Electropherogram Summary Continued ...**



**Peak table for sample 7 : sample 18**

Peak	Aligned Migration Time [s]	Size [bp]	Conc. [pg/μl]	Molarity [pmol/l]	Observations
1	43.00	35	125.00	5,411.3	Lower Marker
2	113.00	10,380	75.00	10.9	Upper Marker

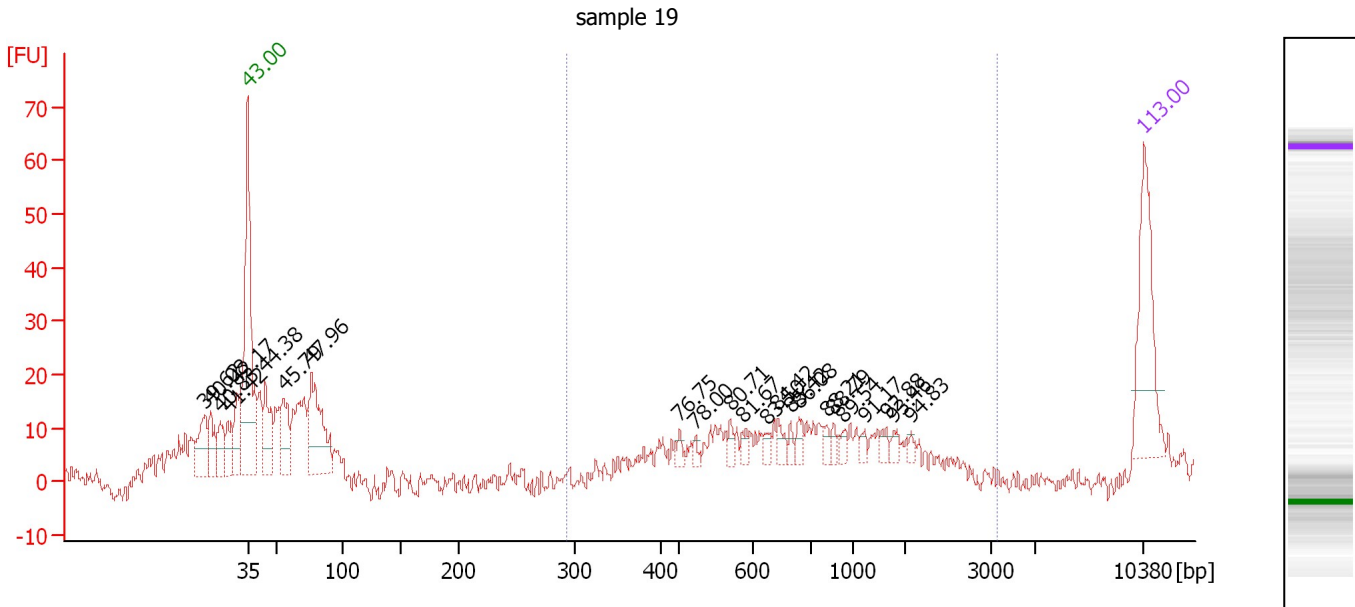
**Region table for sample 7 : sample 18**

From [bp]	To [bp]	Average Size [bp]	Molarity [pmol/l]	Conc. [pg/μl]	Corr. Area	% of Total	Size distribution in CV [%]	Color
200	645	376	28,616.5	6,812.61	191.1	36	19.2	Blue

Assay Class: High Sensitivity DNA Assay  
 Data Path: C:\...ents and Settings\Bioanalyzer\2014-01-29\2014-01-29\_001.xad

Created: 1/29/2014 12:27:53 PM  
 Modified: 1/29/2014 1:13:49 PM

**Electropherogram Summary Continued ...**



**Peak table for sample 8 : sample 19**

Peak	Aligned Migration Time [s]	Size [bp]	Conc. [pg/μl]	Molarity [pmol/l]	Observations
1	39.63	23	0.00	0.0	
2	40.08	25	0.00	0.0	
3	40.83	27	0.00	0.0	
4	41.42	29	0.00	0.0	
5	42.17	32	0.00	0.0	
6	43.00	35	125.00	5,411.3	Lower Marker
7	44.38	44	60.98	2,091.6	
8	45.79	55	57.81	1,585.2	
9	47.96	76	119.22	2,371.4	
10	76.75	500	7.13	21.6	
11	78.00	522	4.71	13.7	
12	80.71	570	7.20	19.2	
13	81.67	587	7.93	20.5	
14	83.50	624	7.31	17.8	
15	84.42	643	9.08	21.4	
16	85.42	665	5.88	13.4	
17	86.08	679	9.51	21.2	
18	88.21	809	6.33	11.9	
19	88.79	862	6.26	11.0	
20	89.54	932	6.08	9.9	
21	91.17	1,220	4.69	5.8	
22	92.88	1,646	5.94	5.5	
23	93.46	1,791	5.49	4.6	
24	94.83	2,079	3.62	2.6	
25	113.00	10,380	75.00	10.9	Upper Marker

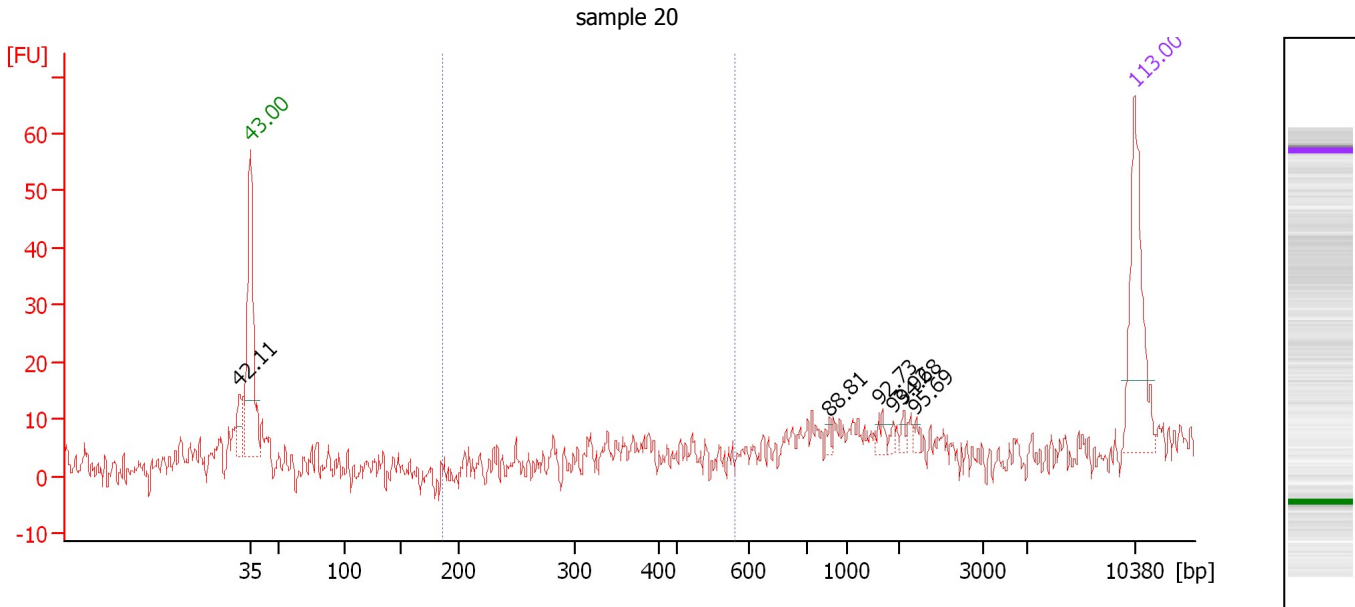
**Region table for sample 8 : sample 19**

From [bp]	To [bp]	Average Size [bp]	Molarity [pmol/l]	Conc. [pg/μl]	Corr. Area	% of Total	Size distribution in CV [%]	Color
292	3,474	944	760.4	328.25	218.0	39	64.1	Blue

Assay Class: High Sensitivity DNA Assay  
 Data Path: C:\...ents and Settings\Bioanalyzer\2014-01-29\2014-01-29\_001.xad

Created: 1/29/2014 12:27:53 PM  
 Modified: 1/29/2014 1:13:49 PM

**Electropherogram Summary Continued ...**



**Peak table for sample 9 : sample 20**

Peak	Aligned Migration Time [s]	Size [bp]	Conc. [pg/μl]	Molarity [pmol/l]	Observations
1	42.11	32	0.00	0.0	
2	43.00	35	125.00	5,411.3	Lower Marker
3	88.81	864	3.81	6.7	
4	92.73	1,611	5.84	5.5	
5	93.92	1,906	3.10	2.5	
6	94.68	2,056	4.01	3.0	
7	95.69	2,206	3.46	2.4	
8	113.00	10,380	75.00	10.9	Upper Marker

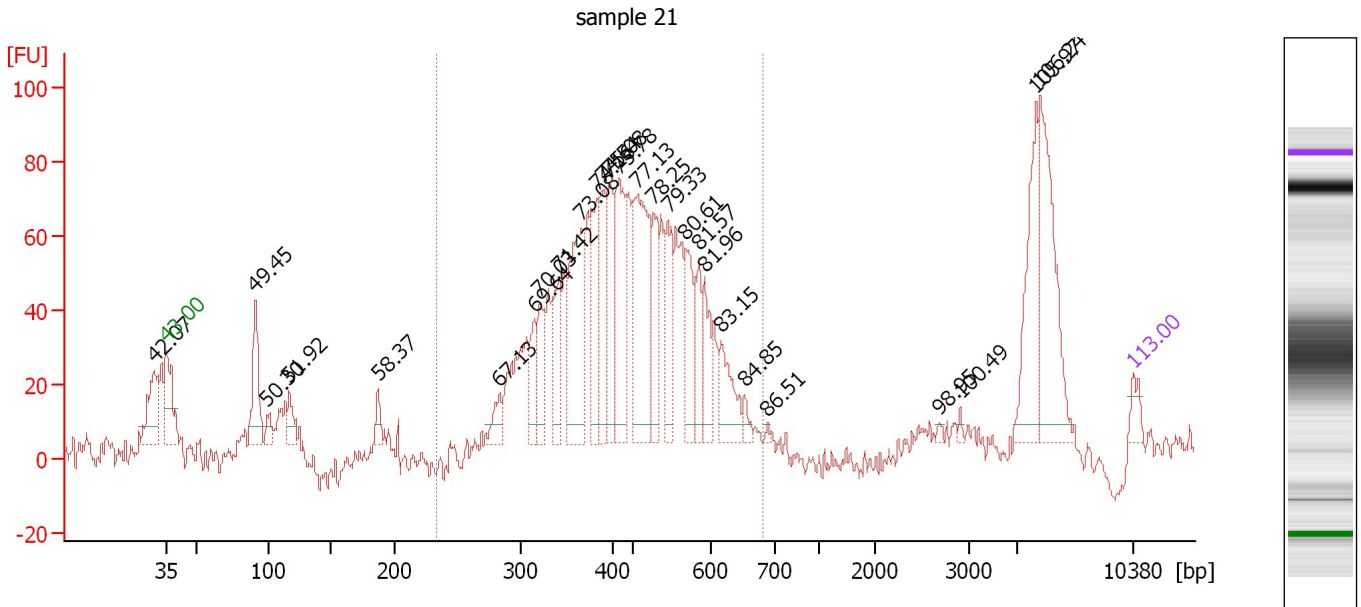
**Region table for sample 9 : sample 20**

From [bp]	To [bp]	Average Size [bp]	Molarity [pmol/l]	Conc. [pg/μl]	Corr. Area	% of Total	Size distribution in CV [%]	Color
186	581	373	155.4	35.23	19.2	14	24.8	Blue

Assay Class: High Sensitivity DNA Assay  
 Data Path: C:\...ents and Settings\Bioanalyzer\2014-01-29\2014-01-29\_001.xad

Created: 1/29/2014 12:27:53 PM  
 Modified: 1/29/2014 1:13:49 PM

**Electropherogram Summary Continued ...**



**Peak table for sample 10 : sample 21**

Peak	Aligned Migration Time [s]	Size [bp]	Conc. [pg/μl]	Molarity [pmol/l]	Observations
1	42.07	32	0.00	0.0	
2	43.00	35	125.00	5,411.3	Lower Marker
3	49.45	91	578.38	9,676.9	
4	50.30	99	113.29	1,738.0	
5	51.92	116	197.65	2,571.4	
6	58.37	187	116.20	940.4	
7	67.13	284	162.87	869.8	
8	69.64	316	235.03	1,128.7	
9	70.03	321	349.58	1,648.5	
10	71.42	342	386.08	1,709.6	
11	73.08	367	917.57	3,787.3	
12	74.16	383	415.67	1,643.1	
13	74.54	389	529.90	2,063.4	
14	75.08	397	497.39	1,897.3	
15	75.78	434	686.20	2,394.0	
16	77.13	507	1,040.23	3,110.9	
17	78.25	526	402.11	1,157.4	
18	79.33	546	394.29	1,095.1	
19	80.61	568	385.66	1,028.7	
20	81.57	585	234.40	607.0	
21	81.96	592	265.20	678.8	
22	83.15	616	323.47	795.6	
23	84.85	653	65.95	153.1	
24	86.51	689	19.25	42.4	
25	98.95	2,686	16.77	9.5	
26	100.49	2,913	18.53	9.6	
27	105.97	7,562	547.13	109.6	
28	106.24	7,671	747.03	147.6	
29	113.00	10,380	75.00	10.9	Upper Marker



Assay Class: High Sensitivity DNA Assay  
Data Path: C:\...ents and Settings\Bioanalyzer\2014-01-29\2014-01-29\_001.xad

Created: 1/29/2014 12:27:53 PM  
Modified: 1/29/2014 1:13:49 PM

**Electropherogram Summary Continued ...**

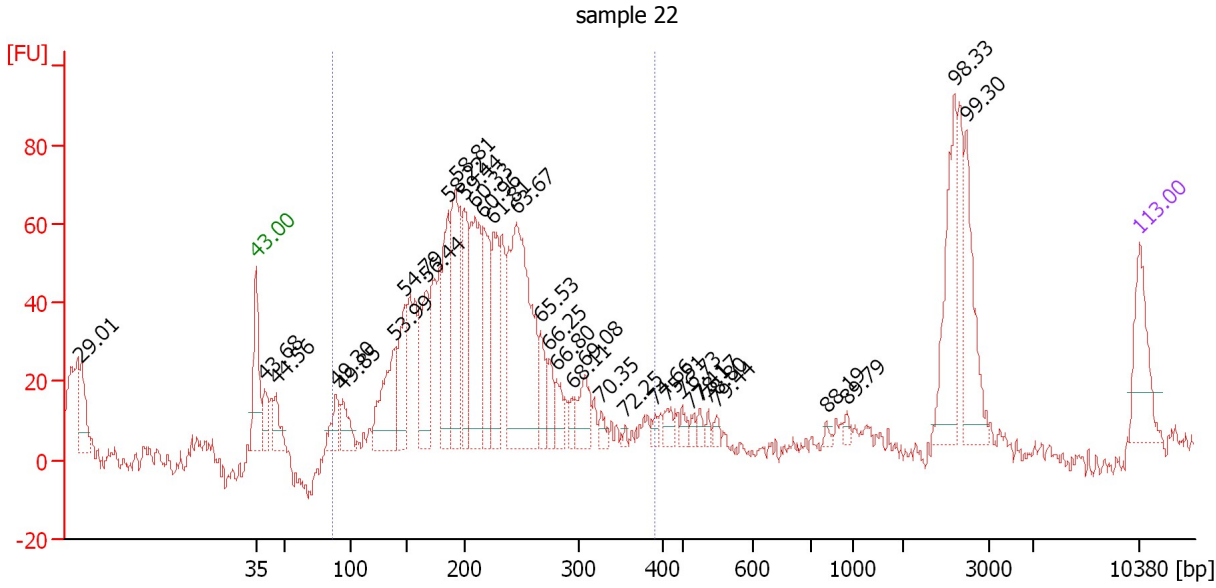
... Region table for sample 10 : sample 21

From [bp]	To [bp]	Average Size [bp]	Molarity [pmol/l]	Conc. [pg/μl]	Corr. Area	% of Total	Size distribution in CV [%]	Color
234	683	455	38,332.8	10,652.96	1,316.3	72	23.0	■

Assay Class: High Sensitivity DNA Assay  
 Data Path: C:\...ents and Settings\Bioanalyzer\2014-01-29\2014-01-29\_001.xad

Created: 1/29/2014 12:27:53 PM  
 Modified: 1/29/2014 1:13:49 PM

**Electropherogram Summary Continued ...**



**Peak table for sample 11 : sample 22**


Peak	Aligned Migration Time [s]	Size [bp]	Conc. [pg/μl]	Molarity [pmol/l]	Observations
1	29.01	0	0.00	0.0	
2	43.00	35	125.00	5,411.3	Lower Marker
3	43.68	40	57.81	2,216.8	
4	44.56	45	57.47	1,916.4	
5	49.30	89	56.01	952.3	
6	49.85	94	59.61	956.6	
7	53.99	139	171.89	1,869.6	
8	54.79	148	126.86	1,297.4	
9	56.44	166	166.03	1,513.7	
10	58.22	186	182.16	1,487.2	
11	58.81	192	217.14	1,713.1	
12	59.44	199	137.04	1,043.5	
13	60.33	209	227.93	1,654.3	
14	60.96	216	148.79	1,044.9	
15	61.81	225	142.29	957.9	
16	63.67	246	450.01	2,776.6	
17	65.53	266	57.62	328.1	
18	66.25	274	41.30	228.4	
19	66.80	280	37.93	205.2	
20	68.11	294	24.15	124.2	
21	69.08	307	59.62	294.1	
22	70.35	326	16.73	77.7	
23	72.25	355	5.95	25.4	
24	74.66	391	10.79	41.8	
25	75.51	416	20.17	73.5	
26	76.73	498	15.07	45.8	
27	77.41	512	11.37	33.7	
28	78.17	525	11.68	33.7	
29	78.80	536	8.82	24.9	
30	79.44	547	10.33	28.6	

Assay Class: High Sensitivity DNA Assay  
 Data Path: C:\...ents and Settings\Bioanalyzer\2014-01-29\2014-01-29\_001.xad


Created: 1/29/2014 12:27:53 PM  
 Modified: 1/29/2014 1:13:49 PM

### Electropherogram Summary Continued ...

#### ... Peak table for sample 11 : sample 22

Peak	Aligned Migration Time [s]	Size [bp]	Conc. [pg/ $\mu$ l]	Molarity [pmol/l]	Observations
31	88.19	807	5.76	10.8	
32	89.79	955	8.15	12.9	
33	98.33	2,595	137.91	80.5	
34	99.30	2,738	103.60	57.3	
35	 113.00	10,380	75.00	10.9	Upper Marker

#### Region table for sample 11 : sample 22

From [bp]	To [bp]	Average Size [bp]	Molarity [pmol/l]	Conc. [pg/ $\mu$ l]	Corr. Area	% of Total	Size distribution in CV [%]	Color
87	391	210	13,132.9	1,747.54	706.0	78	17.2	

Assay Class: High Sensitivity DNA Assay  
Data Path: C:\...ents and Settings\Bioanalyzer\2014-01-29\2014-01-29\_001.xad

Created: 1/29/2014 12:27:53 PM  
Modified: 1/29/2014 1:13:49 PM

**Gel Image**

