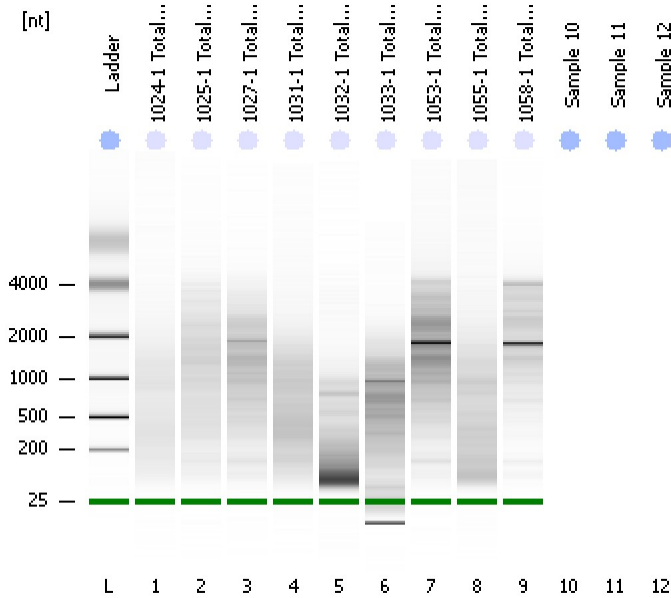


Assay Class: Eukaryote Total RNA Nano
Data Path: C:\...ents and Settings\Bioanalyzer\2014-01-30\2014-01-30_003.xad

Created: 1/30/2014 1:12:00 PM
Modified: 1/30/2014 1:31:46 PM

Electrophoresis File Run Summary



Instrument Information:

Instrument Name: DE13701086 Firmware: C.01.069
Serial#: DE13701086 Type: G2938B

Assay Information:

Assay Origin Path: C:\Program Files\Agilent\2100 bioanalyzer\2100 expert\assays\RNA\Eukaryote Total RNA Nano Series II.xsy

Assay Class: Eukaryote Total RNA Nano

Version: 2.6

Assay Comments: Total RNA Analysis ng sensitivity (Eukaryote)

© Copyright 2003 - 2009 Agilent Technologies, Inc.

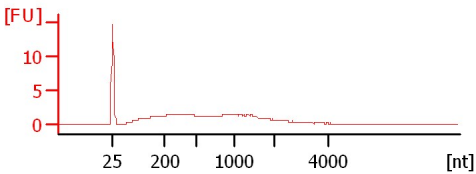
Chip Information:

Chip Lot #:

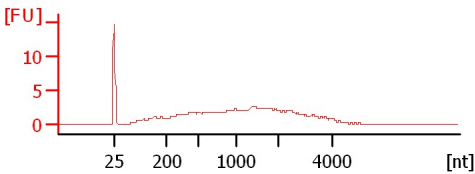
Reagent Kit Lot #:

Chip Comments:

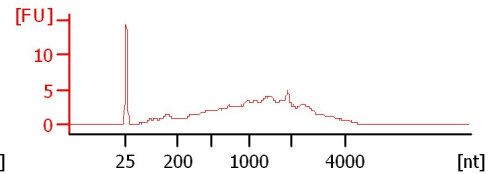
1024-1 Total RNA
RIN: 1.20



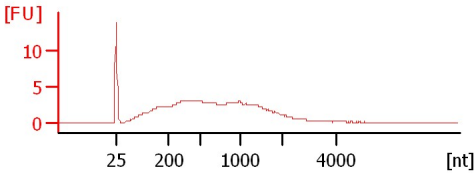
1025-1 Total RNA
RIN: 1.80



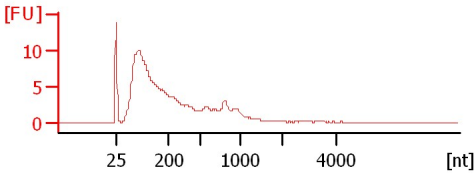
1027-1 Total RNA 1:3
RIN: 2.40



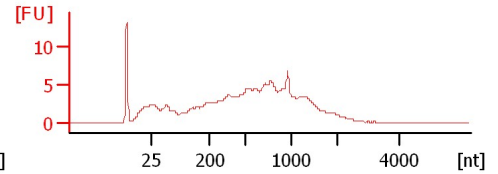
1031-1 Total RNA 1:2
RIN: 2.10



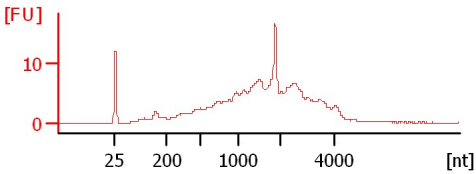
1032-1 Total RNA 1:3
RIN: 2.40



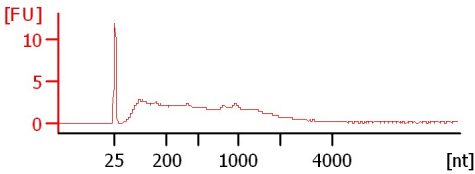
1033-1 Total RNA 1:3
RIN: 2.30



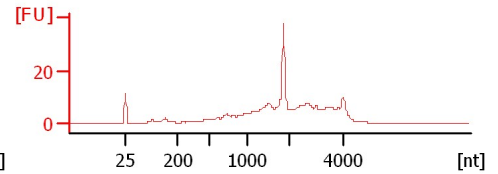
1053-1 Total RNA 1:4
RIN: 4



1055-1 Total RNA 1:2
RIN: 2.10



1058-1 Total RNA 1:5
RIN: 5.70



Assay Class: Eukaryote Total RNA Nano
Data Path: C:\...ents and Settings\Bioanalyzer\2014-01-30\2014-01-30_003.xad

Created: 1/30/2014 1:12:00 PM
Modified: 1/30/2014 1:31:46 PM

Electrophoresis File Run Summary (Chip Summary)

Sample Name	Sample Comment	Status	Result Label	Result Color
1024-1 Total RNA		✓	RIN: 1.20	
1025-1 Total RNA		✓	RIN: 1.80	
1027-1 Total RNA 1:3		✓	RIN: 2.40	
1031-1 Total RNA 1:2		✓	RIN: 2.10	
1032-1 Total RNA 1:3		✓	RIN: 2.40	
1033-1 Total RNA 1:3		✓	RIN: 2.30	
1053-1 Total RNA 1:4		✓	RIN:4	
1055-1 Total RNA 1:2		✓	RIN: 2.10	
1058-1 Total RNA 1:5		✓	RIN: 5.70	
Sample 10				
Sample 11				
Sample 12				
Ladder		✓	All Other Samples	

Chip Lot #

Reagent Kit Lot #

Chip Comments :

Assay Class: Eukaryote Total RNA Nano
Data Path: C:\...ents and Settings\Bioanalyzer\2014-01-30\2014-01-30_003.xad

Created: 1/30/2014 1:12:00 PM
Modified: 1/30/2014 1:31:46 PM

Electrophoresis Assay Details

General Analysis Settings

Number of Available Sample and Ladder Wells (Max.) : 13
Minimum Visible Range [s] : 17
Maximum Visible Range [s] : 70
Start Analysis Time Range [s] : 19
End Analysis Time Range [s] : 69
Ladder Concentration [ng/μl] : 150
Lower Marker Concentration [ng/μl] : 0
Upper Marker Concentration [ng/μl] : 0
Used Lower Marker for Quantitation
Standard Curve Fit is Logarithmic
Show Data Aligned to Lower Marker

Integrator Settings

Integration Start Time [s] : 19
Integration End Time [s] : 69
Slope Threshold : 0.6
Height Threshold [FU] : 0.5
Area Threshold : 0.2
Width Threshold [s] : 0.5
Baseline Plateau [s] : 6

Filter Settings

Filter Width [s] : 0.5
Polynomial Order : 4

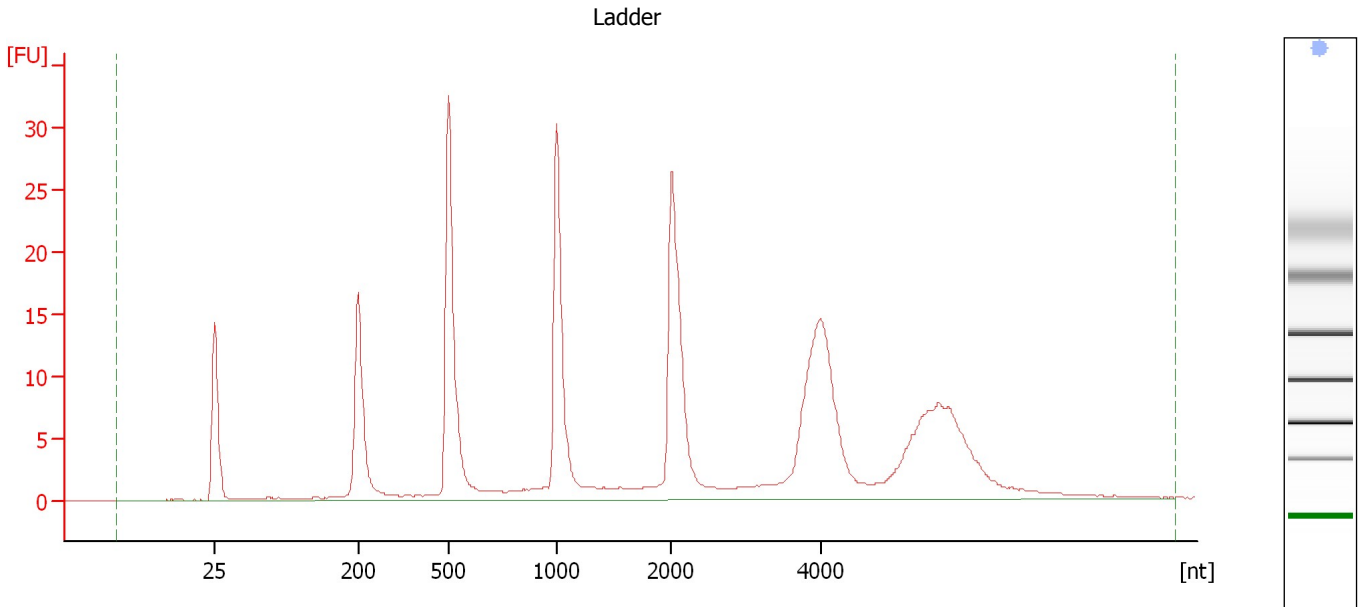
Ladder

Ladder Peak	Size
1	25
2	200
3	500
4	1000
5	2000
6	4000

Assay Class: Eukaryote Total RNA Nano
Data Path: C:\...ents and Settings\Bioanalyzer\2014-01-30\2014-01-30_003.xad

Created: 1/30/2014 1:12:00 PM
Modified: 1/30/2014 1:31:46 PM

Electropherogram Summary



Overall Results for Ladder

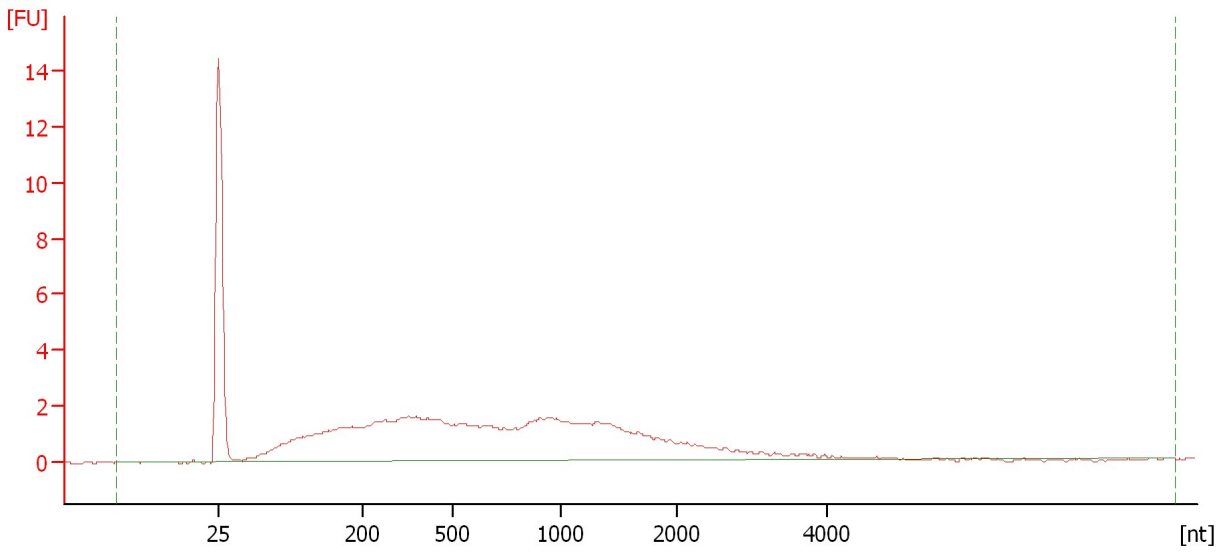
RNA Area:	268.8	Result Flagging Color:	
RNA Concentration:	150 ng/ μ l	Result Flagging Label:	All Other Samples

Assay Class: Eukaryote Total RNA Nano
Data Path: C:\...ents and Settings\Bioanalyzer\2014-01-30\2014-01-30_003.xad

Created: 1/30/2014 1:12:00 PM
Modified: 1/30/2014 1:31:46 PM

Electropherogram Summary Continued ...

1024-1 Total RNA



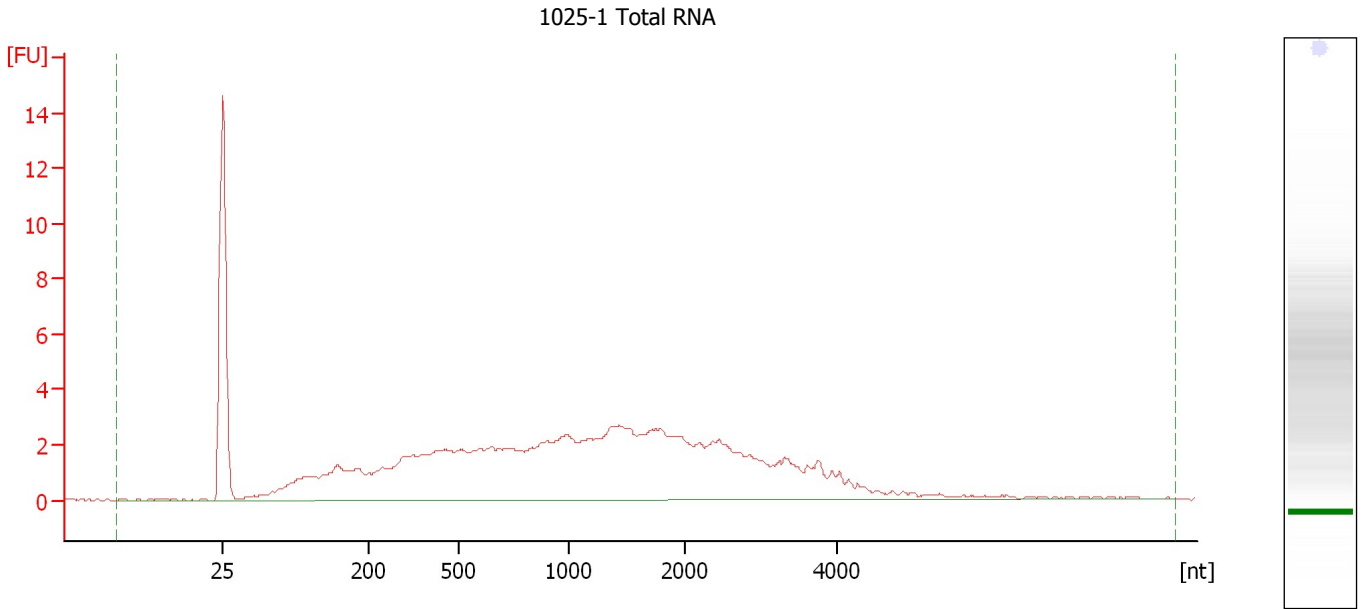
Overall Results for sample 1 : 1024-1 Total RNA

RNA Area:	70.8	RNA Integrity Number (RIN):	1.2 (B.02.08)
RNA Concentration:	39 ng/μl	Result Flagging Color:	
rRNA Ratio [28s / 18s]:	0.0	Result Flagging Label:	RIN: 1.20

Assay Class: Eukaryote Total RNA Nano
Data Path: C:\...ents and Settings\Bioanalyzer\2014-01-30\2014-01-30_003.xad

Created: 1/30/2014 1:12:00 PM
Modified: 1/30/2014 1:31:46 PM

Electropherogram Summary Continued ...



Overall Results for sample 2 : 1025-1 Total RNA

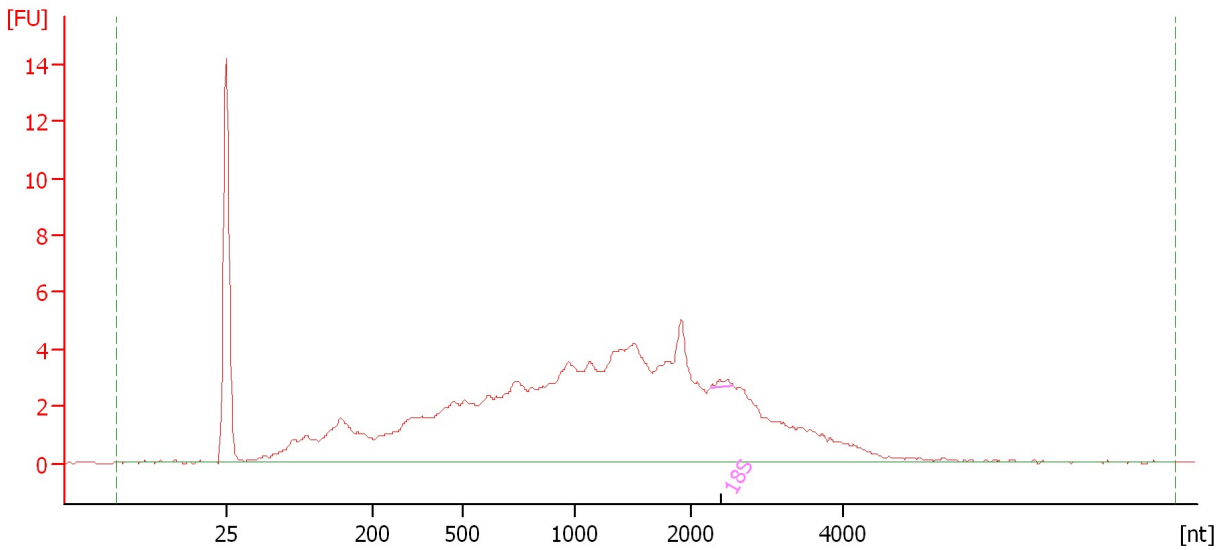
RNA Area:	113.6	RNA Integrity Number (RIN):	1.8 (B.02.08)
RNA Concentration:	63 ng/μl	Result Flagging Color:	
rRNA Ratio [28s / 18s]:	0.0	Result Flagging Label:	RIN: 1.80

Assay Class: Eukaryote Total RNA Nano
Data Path: C:\...ents and Settings\Bioanalyzer\2014-01-30\2014-01-30_003.xad

Created: 1/30/2014 1:12:00 PM
Modified: 1/30/2014 1:31:46 PM

Electropherogram Summary Continued ...

1027-1 Total RNA 1:3



Overall Results for sample 3 : 1027-1 Total RNA 1:3

RNA Area:	140.3	RNA Integrity Number (RIN):	2.4 (B.02.08)
RNA Concentration:	78 ng/μl	Result Flagging Color:	
rRNA Ratio [28s / 18s]:	0.0	Result Flagging Label:	RIN: 2.40

Fragment table for sample 3 : 1027-1 Total RNA 1:3

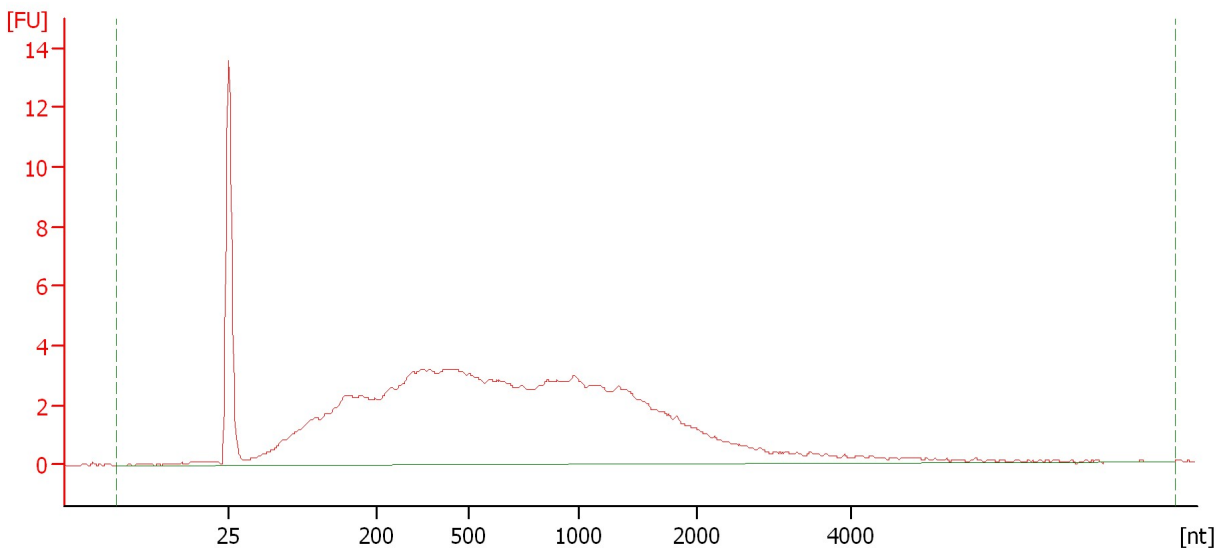
Name	Start Size [nt]	End Size [nt]	Area	% of total Area
18S	2,241	2,551	0.3	0.2

Assay Class: Eukaryote Total RNA Nano
Data Path: C:\...ents and Settings\Bioanalyzer\2014-01-30\2014-01-30_003.xad

Created: 1/30/2014 1:12:00 PM
Modified: 1/30/2014 1:31:46 PM

Electropherogram Summary Continued ...

1031-1 Total RNA 1:2



Overall Results for sample 4 : 1031-1 Total RNA 1:2

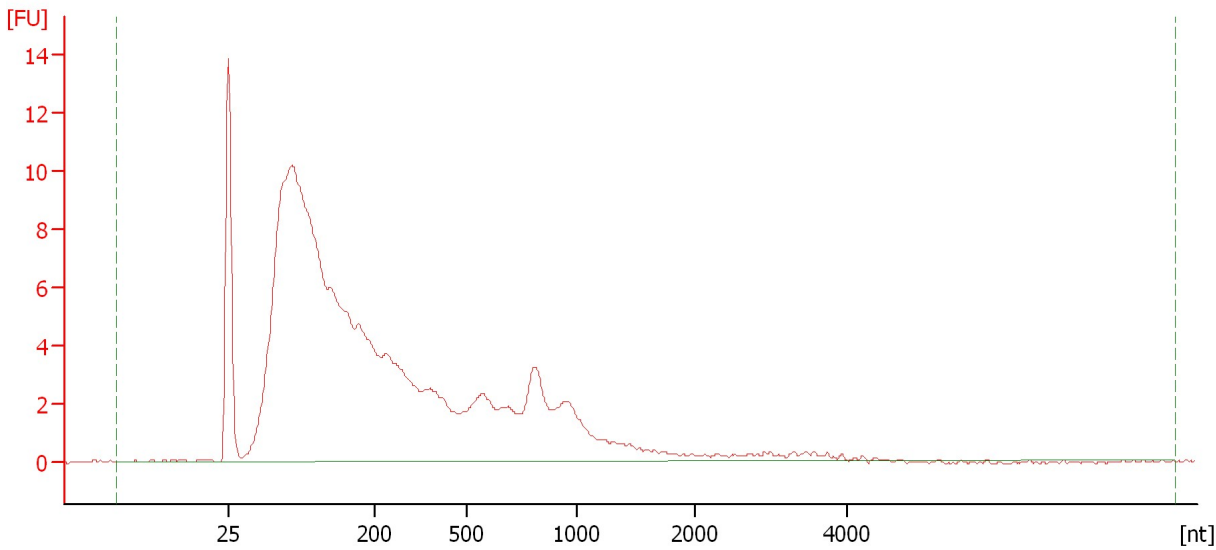
RNA Area:	140.7	RNA Integrity Number (RIN):	2.1 (B.02.08)
RNA Concentration:	79 ng/μl	Result Flagging Color:	
rRNA Ratio [28s / 18s]:	0.0	Result Flagging Label:	RIN: 2.10

Assay Class: Eukaryote Total RNA Nano
Data Path: C:\...ents and Settings\Bioanalyzer\2014-01-30\2014-01-30_003.xad

Created: 1/30/2014 1:12:00 PM
Modified: 1/30/2014 1:31:46 PM

Electropherogram Summary Continued ...

1032-1 Total RNA 1:3



Overall Results for sample 5 : 1032-1 Total RNA 1:3

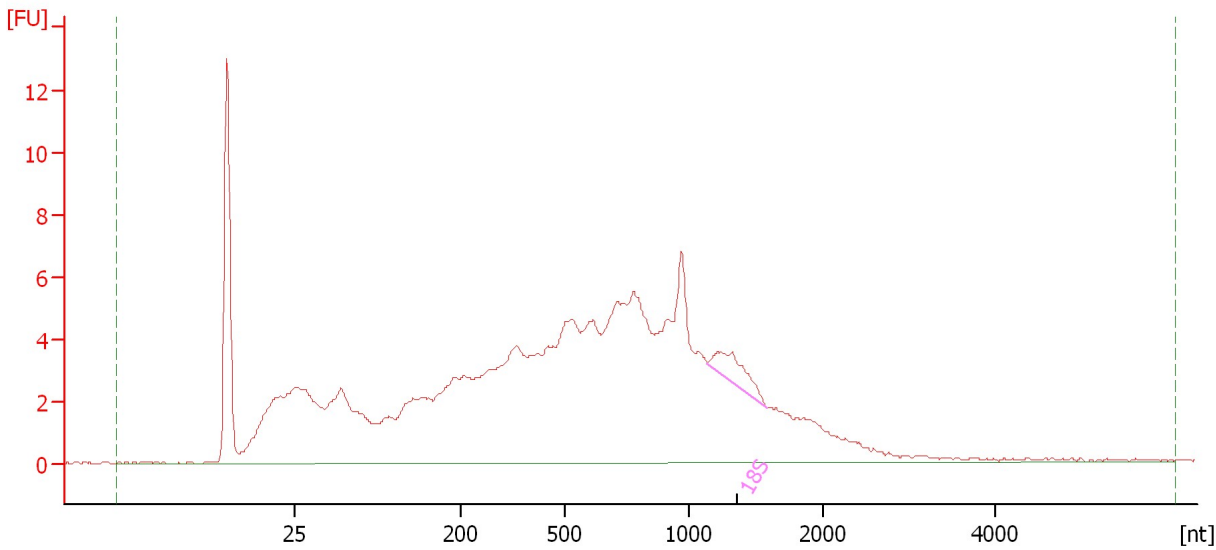
RNA Area:	195.0	RNA Integrity Number (RIN):	2.4 (B.02.08)
RNA Concentration:	109 ng/μl	Result Flagging Color:	
rRNA Ratio [28s / 18s]:	0.0	Result Flagging Label:	RIN: 2.40

Assay Class: Eukaryote Total RNA Nano
Data Path: C:\...ents and Settings\Bioanalyzer\2014-01-30\2014-01-30_003.xad

Created: 1/30/2014 1:12:00 PM
Modified: 1/30/2014 1:31:46 PM

Electropherogram Summary Continued ...

1033-1 Total RNA 1:3



Overall Results for sample 6 : 1033-1 Total RNA 1:3

RNA Area:	199.1	RNA Integrity Number (RIN):	2.3 (B.02.08)
RNA Concentration:	111 ng/μl	Result Flagging Color:	
rRNA Ratio [28s / 18s]:	0.0	Result Flagging Label:	RIN: 2.30

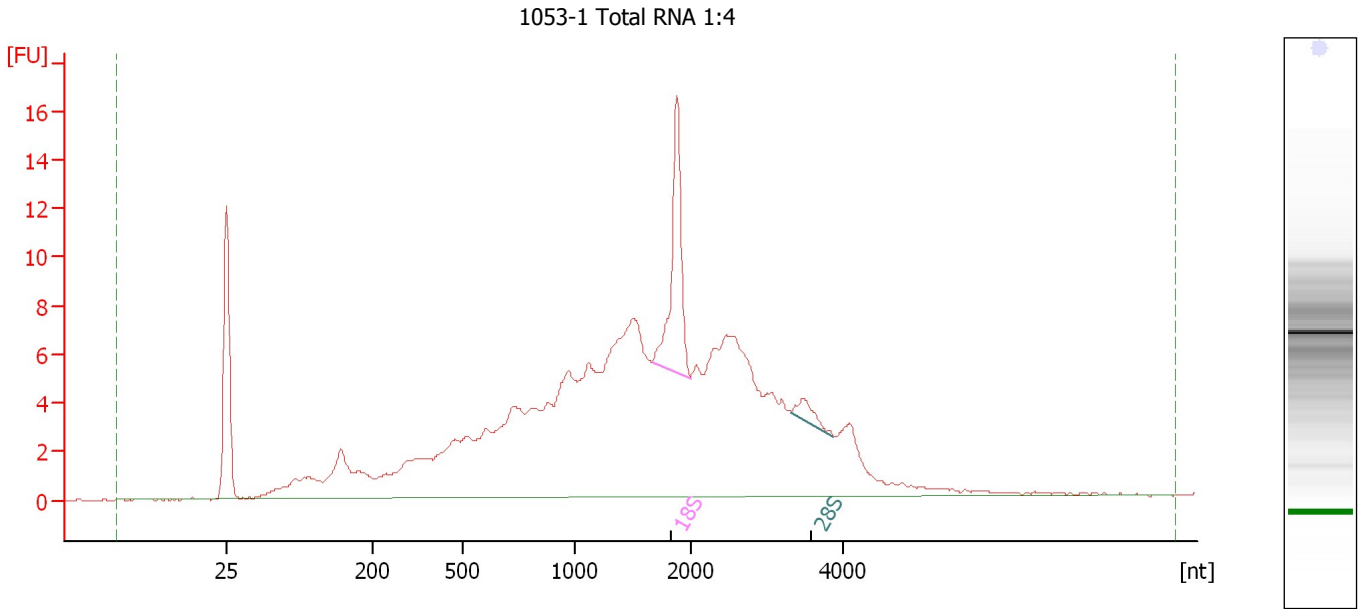
Fragment table for sample 6 : 1033-1 Total RNA 1:3

Name	Start Size [nt]	End Size [nt]	Area	% of total Area
18S	1,139	1,579	3.1	1.5

Assay Class: Eukaryote Total RNA Nano
Data Path: C:\...ents and Settings\Bioanalyzer\2014-01-30\2014-01-30_003.xad

Created: 1/30/2014 1:12:00 PM
Modified: 1/30/2014 1:31:46 PM

Electropherogram Summary Continued ...



Overall Results for sample 7 : 1053-1 Total RNA 1:4

RNA Area: 240.1 RNA Integrity Number (RIN): 4 (B.02.08)
RNA Concentration: 134 ng/μl Result Flagging Color:
rRNA Ratio [28s / 18s]: 0.1 Result Flagging Label: RIN:4

Fragment table for sample 7 : 1053-1 Total RNA 1:4

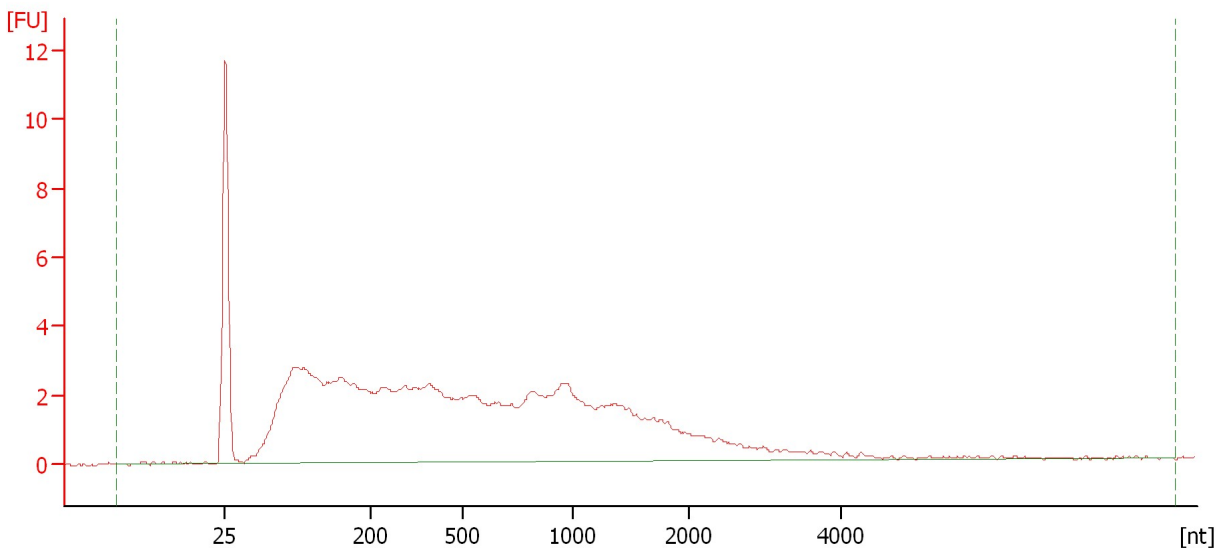
Name	Start Size [nt]	End Size [nt]	Area	% of total Area
18S	1,665	1,992	12.2	5.1
28S	3,312	3,876	1.5	0.6

Assay Class: Eukaryote Total RNA Nano
Data Path: C:\...ents and Settings\Bioanalyzer\2014-01-30\2014-01-30_003.xad

Created: 1/30/2014 1:12:00 PM
Modified: 1/30/2014 1:31:46 PM

Electropherogram Summary Continued ...

1055-1 Total RNA 1:2



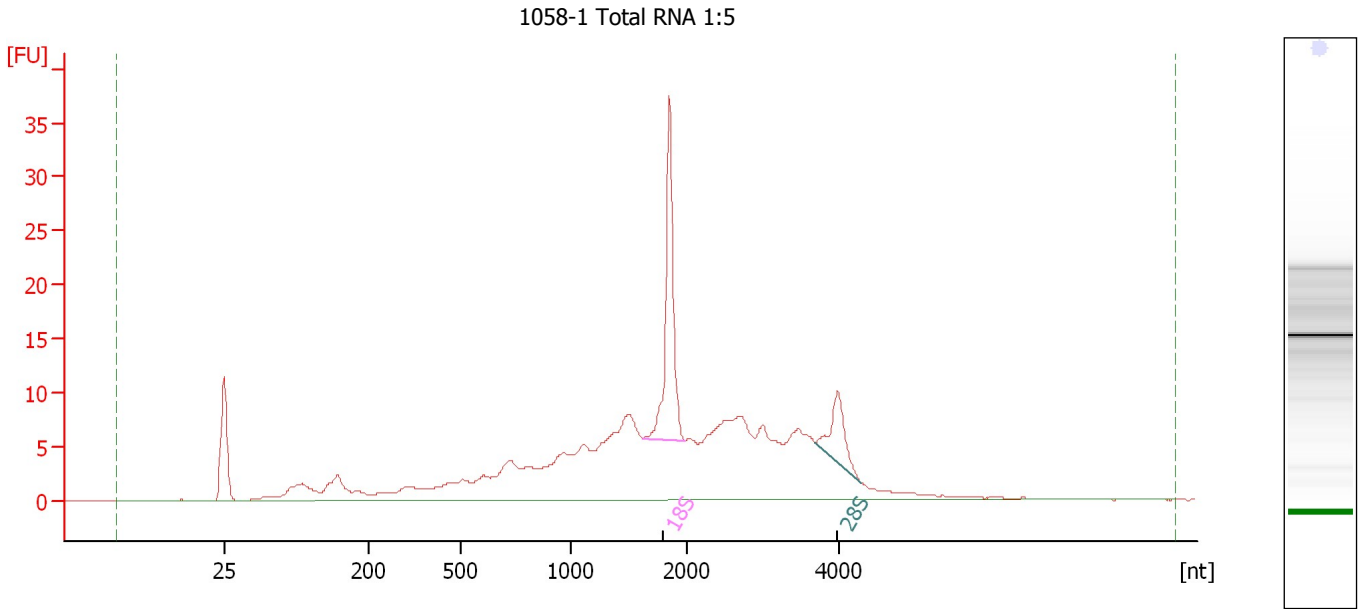
Overall Results for sample 8 : 1055-1 Total RNA 1:2

RNA Area:	115.9	RNA Integrity Number (RIN):	2.1 (B.02.08)
RNA Concentration:	65 ng/μl	Result Flagging Color:	
rRNA Ratio [28s / 18s]:	0.0	Result Flagging Label:	RIN: 2.10

Assay Class: Eukaryote Total RNA Nano
 Data Path: C:\...ents and Settings\Bioanalyzer\2014-01-30\2014-01-30_003.xad

Created: 1/30/2014 1:12:00 PM
 Modified: 1/30/2014 1:31:46 PM

Electropherogram Summary Continued ...



Overall Results for sample 9 : 1058-1 Total RNA 1:5

RNA Area:	276.8	RNA Integrity Number (RIN):	5.7 (B.02.08)
RNA Concentration:	154 ng/μl	Result Flagging Color:	
rRNA Ratio [28s / 18s]:	0.3	Result Flagging Label:	RIN: 5.70

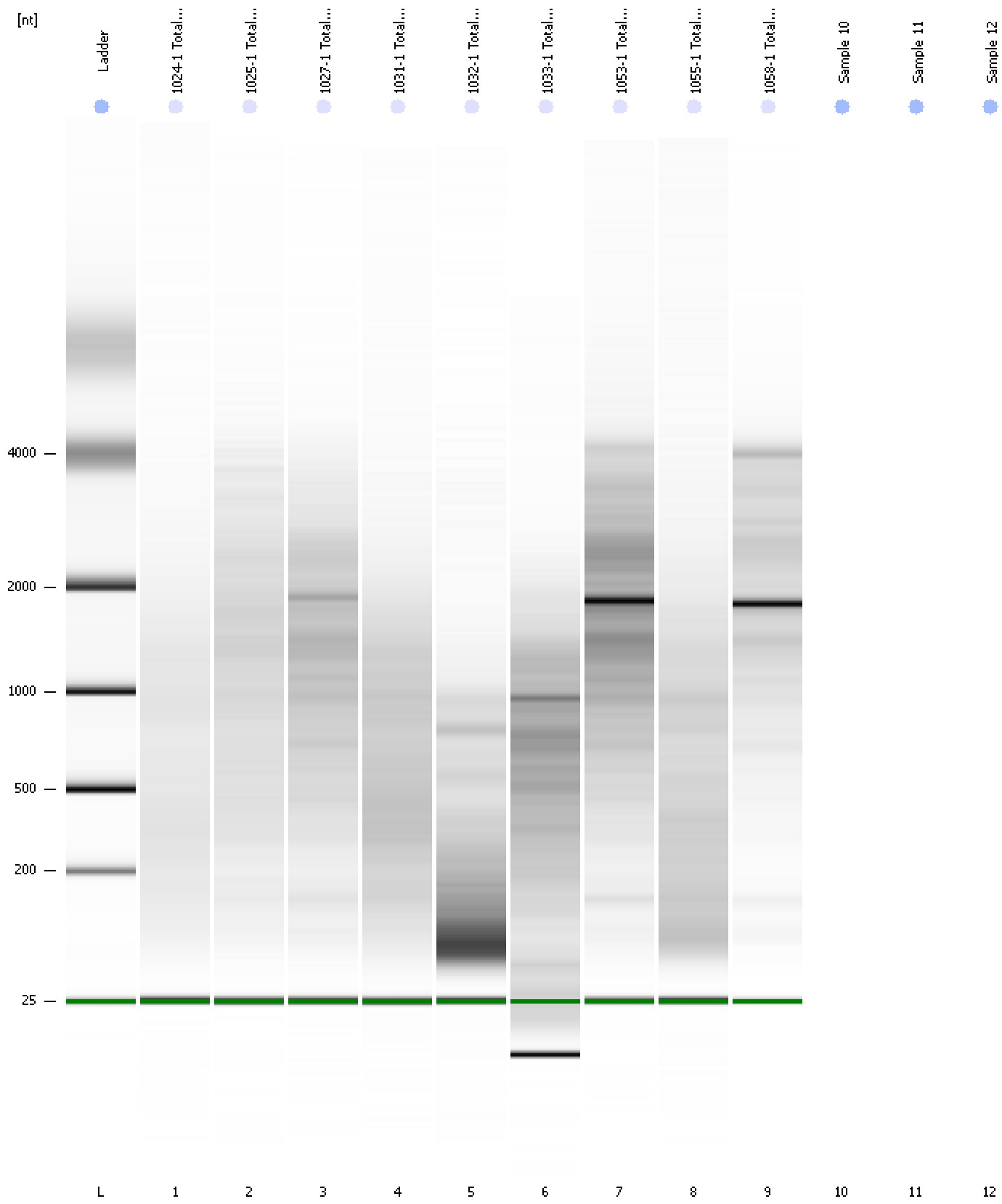
Fragment table for sample 9 : 1058-1 Total RNA 1:5

Name	Start Size [nt]	End Size [nt]	Area	% of total Area
18S	1,616	1,980	28.6	10.3
28S	3,697	4,305	8.9	3.2

Assay Class: Eukaryote Total RNA Nano
Data Path: C:\...ents and Settings\Bioanalyzer\2014-01-30\2014-01-30_003.xad

Created: 1/30/2014 1:12:00 PM
Modified: 1/30/2014 1:31:46 PM

Gel Image



Assay Class: Eukaryote Total RNA Nano
Data Path: C:\...ents and Settings\Bioanalyzer\2014-01-30\2014-01-30_003.xad

Created: 1/30/2014 1:12:00 PM
Modified: 1/30/2014 1:31:46 PM

Invalid Samples

Sample 10 has not been run, no results available.

Sample 11 has not been run, no results available.

Sample 12 has not been run, no results available.