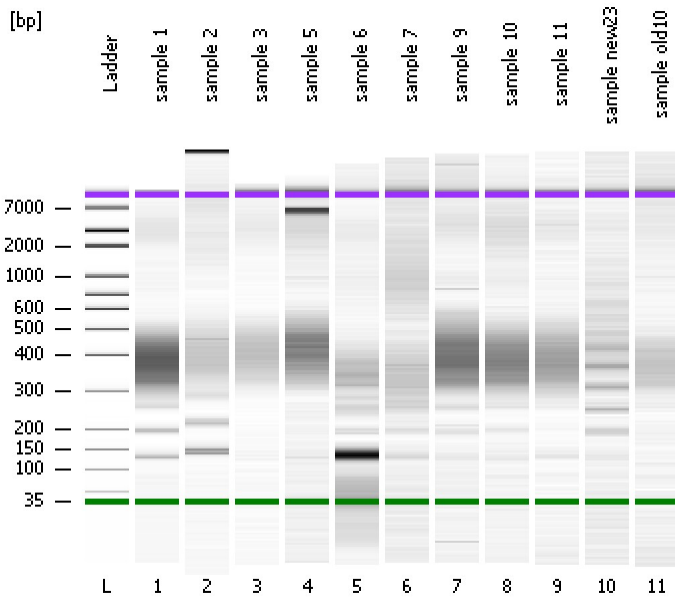


Assay Class: High Sensitivity DNA Assay
Data Path: C:\...ents and Settings\Bioanalyzer\2014-01-30\2014-01-30_004.xad

Created: 1/30/2014 4:28:23 PM
Modified: 1/30/2014 5:15:53 PM

Electrophoresis File Run Summary



Instrument Information:

Instrument Name: DE13701086 Firmware: C.01.069
Serial#: DE13701086 Type: G2938B

Assay Information:

Assay Origin Path: C:\Program Files\Agilent\2100 bioanalyzer\2100 expert\assays\dsDNA\High Sensitivity DNA.xsy
Assay Class: High Sensitivity DNA Assay
Version: 1.03
Assay Comments: Copyright © 2003-2010 Agilent Technologies

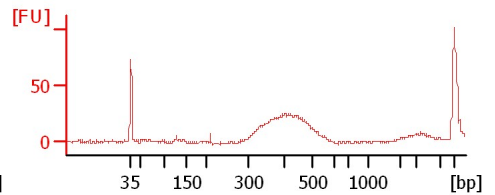
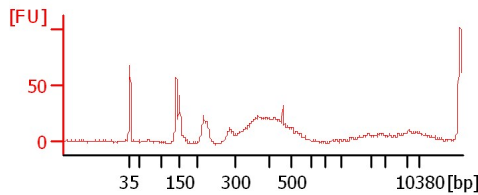
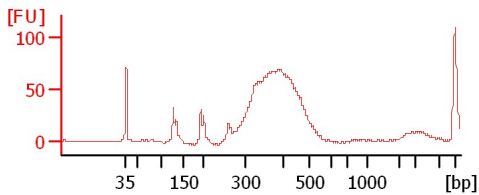
Chip Information:

Chip Lot #:
Reagent Kit Lot #:
Chip Comments:

sample 1

sample 2

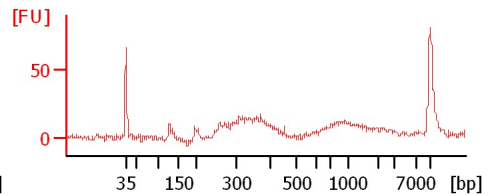
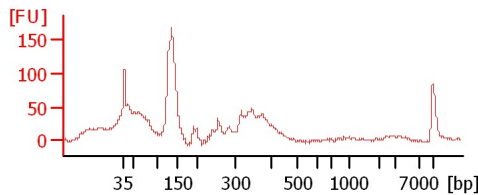
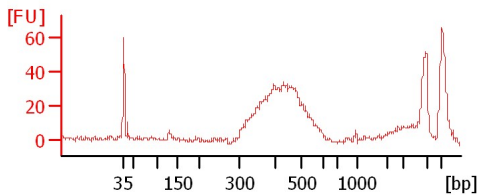
sample 3



sample 5

sample 6

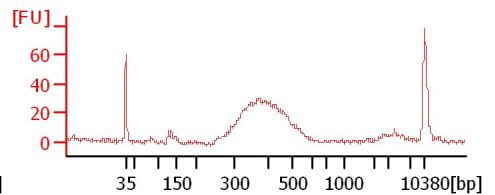
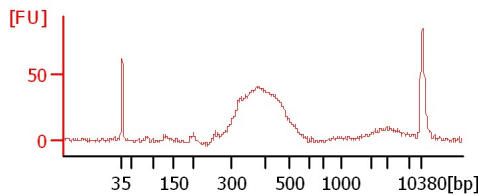
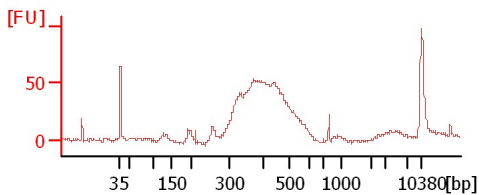
sample 7



sample 9

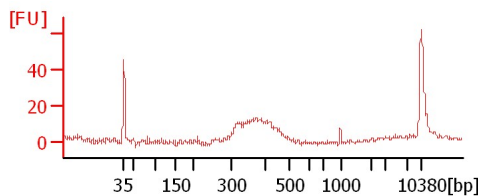
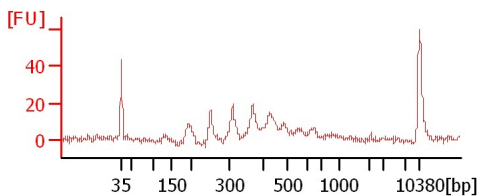
sample 10

sample 11



sample new23

sample old10



Assay Class: High Sensitivity DNA Assay
Data Path: C:\...ents and Settings\Bioanalyzer\2014-01-30\2014-01-30_004.xad

Created: 1/30/2014 4:28:23 PM
Modified: 1/30/2014 5:15:53 PM

Electrophoresis File Run Summary (Chip Summary)

Sample Name	Sample Comment	Rest. Digest	Status	Observation	Result Label	Result Color
sample 1		<input type="checkbox"/>	✓			
sample 2		<input type="checkbox"/>	✓			
sample 3		<input type="checkbox"/>	✓			
sample 5		<input type="checkbox"/>	✓			
sample 6		<input type="checkbox"/>	✓			
sample 7		<input type="checkbox"/>	✓			
sample 9		<input type="checkbox"/>	✓			
sample 10		<input type="checkbox"/>	✓			
sample 11		<input type="checkbox"/>	✓			
sample new23		<input type="checkbox"/>	✓			
sample old10		<input type="checkbox"/>	✓			
Ladder		<input type="checkbox"/>	✓			

Chip Lot #

Reagent Kit Lot #

Chip Comments :

Assay Class: High Sensitivity DNA Assay
Data Path: C:\...ents and Settings\Bioanalyzer\2014-01-30\2014-01-30_004.xad

Created: 1/30/2014 4:28:23 PM
Modified: 1/30/2014 5:15:53 PM

Electrophoresis Assay Details

General Analysis Settings

Number of Available Sample and Ladder Wells (Max.) : 12
Minimum Visible Range [s] : 32
Maximum Visible Range [s] : 138
Start Analysis Time Range [s] : 33
End Analysis Time Range [s] : 137.5
Ladder Concentration [pg/μl] : 1950
Uses Standard Area for Ladder Fragments
Lower Marker Concentration [pg/μl] : 125
Upper Marker Concentration [pg/μl] : 75
Used Upper Marker for Quantitation
Standard Curve Fit is Point to Point
Show Data Aligned to Lower and Upper Marker

Integrator Settings

Integration Start Time [s] : 33.05
Integration End Time [s] : 137
Slope Threshold : 0.8
Height Threshold [FU] : 5
Area Threshold : 0.1
Width Threshold [s] : 0.6
Baseline Plateau [s] : 0.5

Filter Settings

Filter Width [s] : 0.5
Polynomial Order : 4

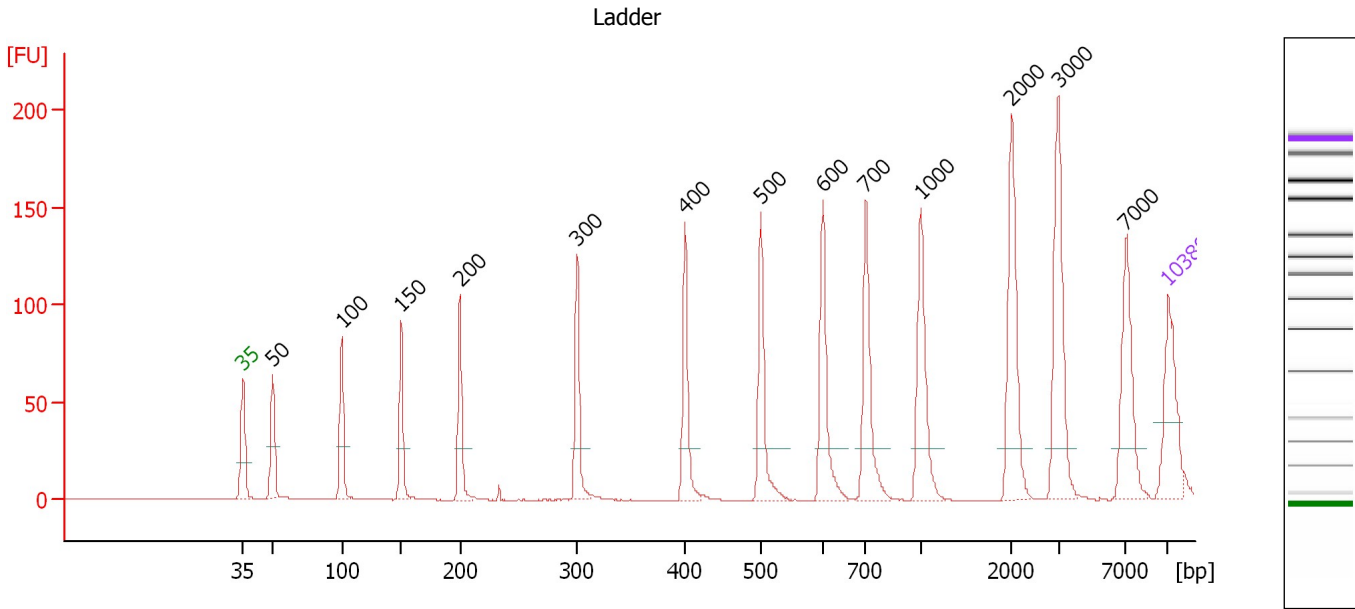
Ladder

Ladder Peak	Size	Area
1	35	160
2	50	210
3	100	208
4	150	221
5	200	242
6	300	270
7	400	305
8	500	306
9	600	336
10	700	321
11	1000	366
12	2000	413
13	3000	411
14	7000	400
15	10380	214

Assay Class: High Sensitivity DNA Assay
 Data Path: C:\...ents and Settings\Bioanalyzer\2014-01-30\2014-01-30_004.xad

Created: 1/30/2014 4:28:23 PM
 Modified: 1/30/2014 5:15:53 PM

Electropherogram Summary



Overall Results for Ladder

Noise: 0.1

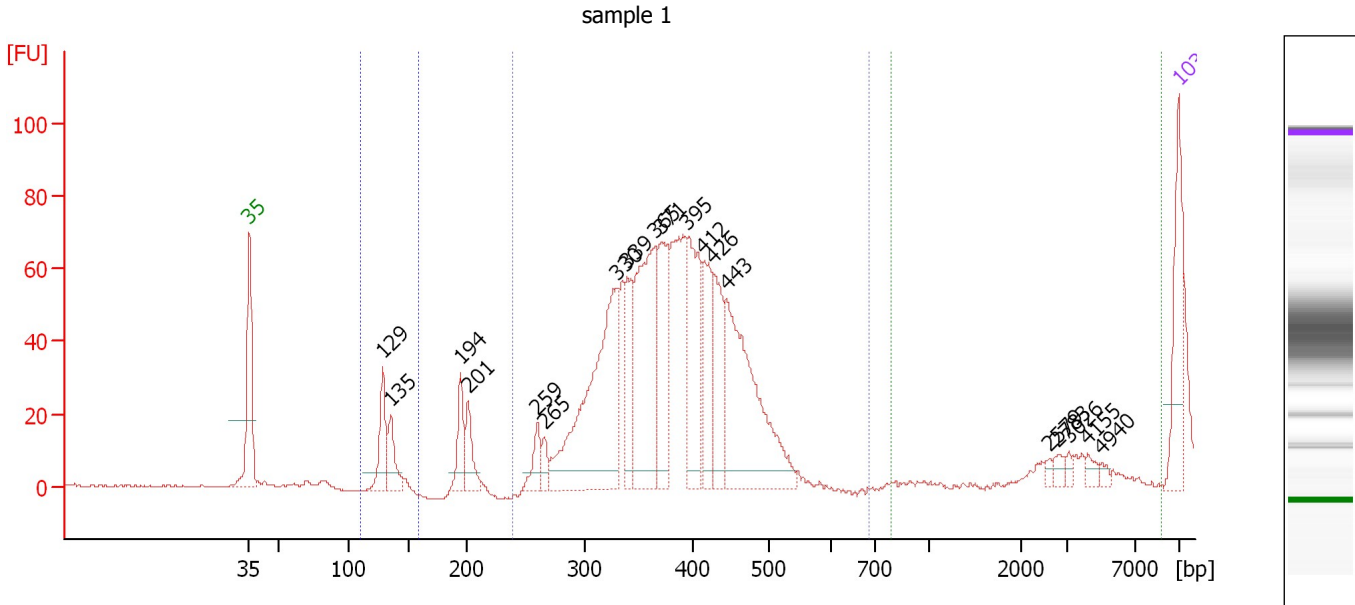
Peak table for Ladder

Peak	Aligned Migration Time [s]	Size [bp]	Conc. [pg/μl]	Molarity [pmol/l]	Observations
1	43.00	35	125.00	5,411.3	Lower Marker
2	45.26	50	150.00	4,545.5	Ladder Peak
3	50.46	100	150.00	2,272.7	Ladder Peak
4	54.98	150	150.00	1,515.2	Ladder Peak
5	59.42	200	150.00	1,136.4	Ladder Peak
6	68.30	300	150.00	757.6	Ladder Peak
7	76.45	400	150.00	568.2	Ladder Peak
8	82.18	500	150.00	454.5	Ladder Peak
9	86.86	600	150.00	378.8	Ladder Peak
10	90.12	700	150.00	324.7	Ladder Peak
11	94.28	1,000	150.00	227.3	Ladder Peak
12	101.14	2,000	150.00	113.6	Ladder Peak
13	104.69	3,000	150.00	75.8	Ladder Peak
14	109.81	7,000	150.00	32.5	Ladder Peak
15	113.00	10,380	75.00	10.9	Upper Marker

Assay Class: High Sensitivity DNA Assay
 Data Path: C:\...ents and Settings\Bioanalyzer\2014-01-30\2014-01-30_004.xad

Created: 1/30/2014 4:28:23 PM
 Modified: 1/30/2014 5:15:53 PM

Electropherogram Summary Continued ...



Overall Results for sample 1 : sample 1

Number of peaks found: 19 Corr. Area 2: 23.4
 Noise: 0.2 Corr. Area 3: 0.0
 Corr. Area 1: 663.9




Peak table for sample 1 : sample 1

Peak	Aligned Migration Time [s]	Size [bp]	Conc. [pg/μl]	Molarity [pmol/l]	Observations
1	43.00	35	125.00	5,411.3	Lower Marker
2	53.05	129	82.52	972.5	
3	53.65	135	58.36	653.9	
4	58.91	194	58.27	454.4	
5	59.48	201	53.28	402.4	
6	64.70	259	37.55	219.3	
7	65.22	265	20.83	118.9	
8	70.73	330	371.54	1,706.8	
9	71.45	339	88.56	396.2	
10	73.58	365	272.44	1,131.5	
11	74.06	371	146.99	600.7	
12	76.03	395	165.76	636.0	
13	77.16	412	102.90	378.1	
14	77.96	426	102.71	364.9	
15	78.92	443	297.99	1,018.6	
16	103.20	2,579	4.86	2.9	
17	103.92	2,783	9.35	5.1	
18	104.72	3,026	5.30	2.7	
19	106.17	4,155	8.57	3.1	
20	107.17	4,940	5.32	1.6	
21	113.00	10,380	75.00	10.9	Upper Marker

Assay Class: High Sensitivity DNA Assay
Data Path: C:\...ents and Settings\Bioanalyzer\2014-01-30\2014-01-30_004.xad

Created: 1/30/2014 4:28:23 PM
Modified: 1/30/2014 5:15:53 PM

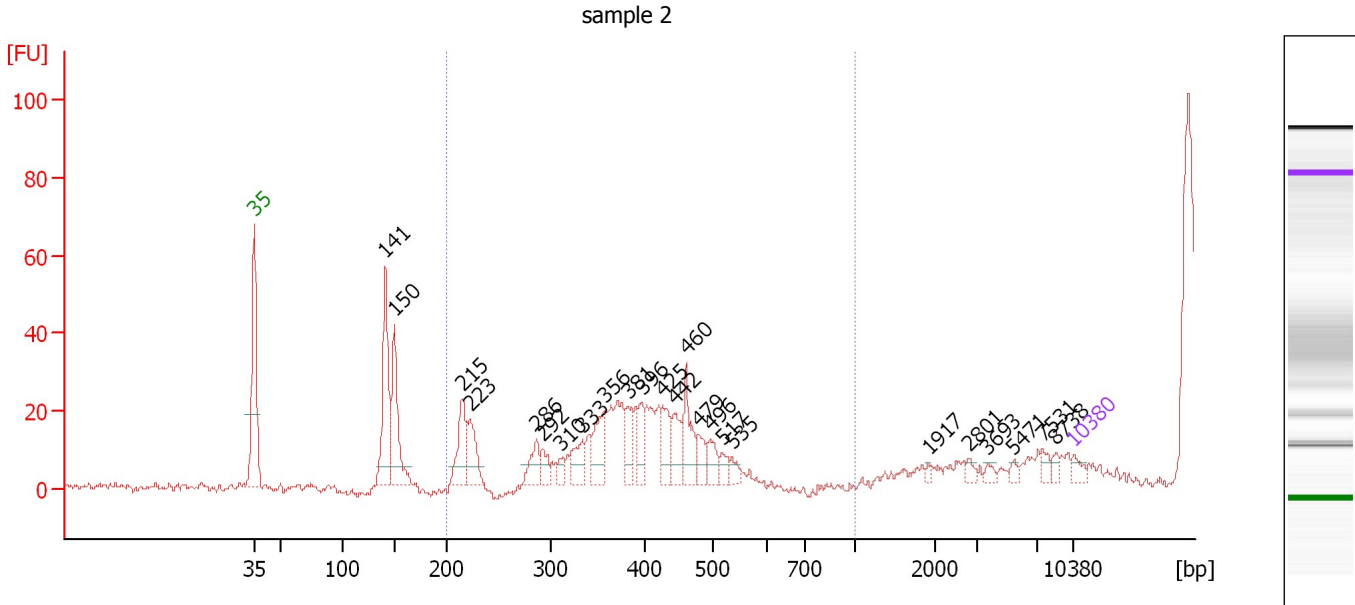
Electropherogram Summary Continued ...**... Region table for sample 1 : sample 1**

From [bp]	To [bp]	Average Size [bp]	Molarity [pmol/l]	Conc. [pg/μl]	Corr. Area	% of Total	Size distribution in CV [%]	Color
110	159	131	618.2	53.31	23.4	3	2.5	
239	685	380	4,487.6	1,111.21	663.9	93	11.5	
789	9,054	0	0.0	0.00	0.0	0	0.0	

Assay Class: High Sensitivity DNA Assay
 Data Path: C:\...ents and Settings\Bioanalyzer\2014-01-30\2014-01-30_004.xad

Created: 1/30/2014 4:28:23 PM
 Modified: 1/30/2014 5:15:53 PM

Electropherogram Summary Continued ...



Overall Results for sample 2 : sample 2

Number of peaks found: 24 Corr. Area 1: 0.0
 Noise: 1.2

Peak table for sample 2 : sample 2

Peak	Aligned Migration Time [s]	Size [bp]	Conc. [pg/μl]	Molarity [pmol/l]	Observations
1	43.00	35	125.00	5,411.3	Lower Marker
2	54.20	141	1,434.97	15,378.4	
3	54.98	150	1,102.70	11,142.3	
4	60.76	215	663.79	4,675.5	
5	61.45	223	489.84	3,331.1	
6	67.09	286	312.72	1,654.2	
7	67.59	292	192.59	999.1	
8	69.10	310	126.69	619.6	
9	71.01	333	334.66	1,521.4	
10	72.88	356	499.65	2,125.4	
11	74.93	381	282.12	1,120.9	
12	76.11	396	303.02	1,159.8	
13	77.89	425	354.26	1,262.6	
14	78.84	442	386.36	1,325.0	
15	79.89	460	446.39	1,470.0	
16	80.98	479	211.59	669.0	
17	81.94	496	237.37	725.3	
18	82.99	517	119.72	350.6	
19	83.81	535	118.50	335.7	
20	100.57	1,917	36.08	28.5	
21	103.98	2,801	58.54	31.7	
22	105.58	3,693	58.61	24.0	
23	107.85	5,471	51.08	14.1	
24	110.31	7,531	76.53	15.4	
25	111.45	8,738	54.93	9.5	


Assay Class: High Sensitivity DNA Assay
Data Path: C:\...ents and Settings\Bioanalyzer\2014-01-30\2014-01-30_004.xad

Created: 1/30/2014 4:28:23 PM
Modified: 1/30/2014 5:15:53 PM

Electropherogram Summary Continued ...**... Peak table for sample 2 : sample 2**

Peak	Aligned Migration Time [s]	Size [bp]	Conc. [pg/ μ l]	Molarity [pmol/l]	Observations
26	113.00	10,380	75.00	10.9	Upper Marker

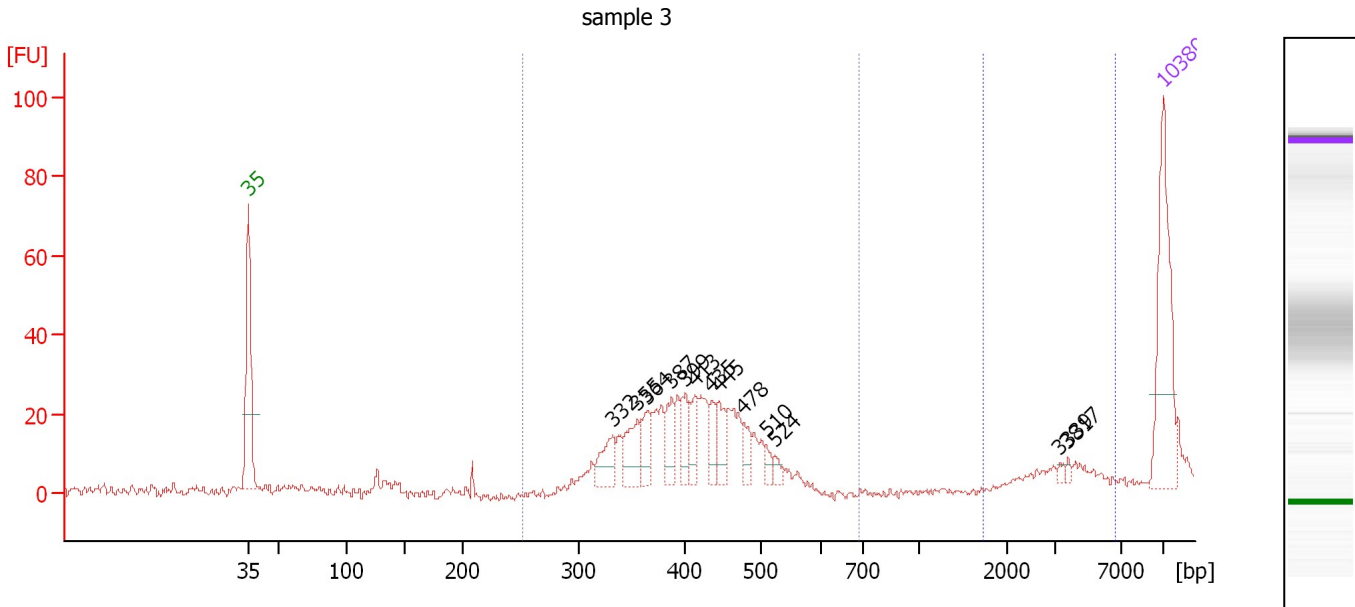
Region table for sample 2 : sample 2

From [bp]	To [bp]	Average Size [bp]	Molarity [pmol/l]	Conc. [pg/ μ l]	Corr. Area	% of Total	Size distribution in CV [%]	Color
200	1,000	0	0.0	0.00	0.0	0	0.0	

Assay Class: High Sensitivity DNA Assay
 Data Path: C:\...ents and Settings\Bioanalyzer\2014-01-30\2014-01-30_004.xad

Created: 1/30/2014 4:28:23 PM
 Modified: 1/30/2014 5:15:53 PM

Electropherogram Summary Continued ...



Overall Results for sample 3 : sample 3

Number of peaks found: 13 Corr. Area 1: 240.9
 Noise: 1.1 Corr. Area 2: 0.1

Peak table for sample 3 : sample 3

Peak	Aligned Migration Time [s]	Size [bp]	Conc. [pg/μl]	Molarity [pmol/l]	Observations
1	43.00	35	125.00	5,411.3	Lower Marker
2	70.92	332	27.93	127.4	
3	72.80	355	32.48	138.6	
4	73.53	364	23.27	96.8	
5	75.41	387	23.86	93.3	
6	76.39	399	22.37	84.9	
7	77.20	413	21.66	79.4	
8	78.47	435	16.53	57.5	
9	79.04	445	21.77	74.1	
10	80.92	478	14.66	46.5	
11	82.63	510	7.27	21.6	
12	83.29	524	6.46	18.7	
13	105.12	3,339	2.29	1.0	
14	105.73	3,817	2.26	0.9	
15	113.00	10,380	75.00	10.9	Upper Marker

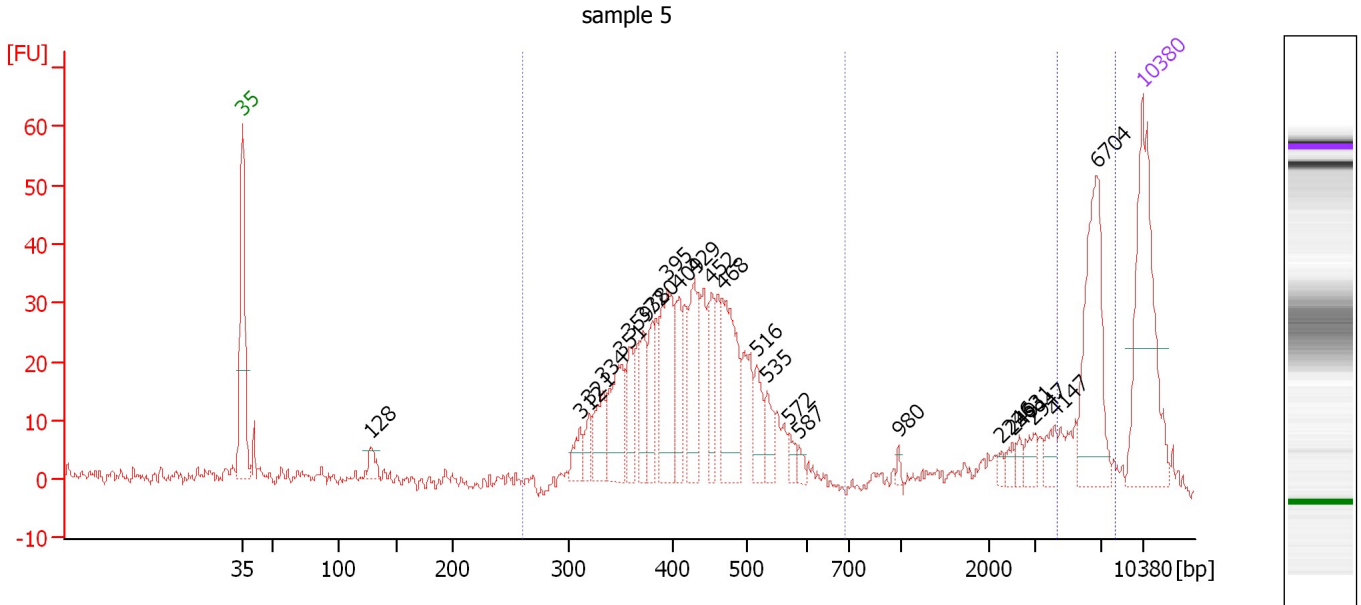
Region table for sample 3 : sample 3

From [bp]	To [bp]	Average Size [bp]	Molarity [pmol/l]	Conc. [pg/μl]	Corr. Area	% of Total	Size distribution in CV [%]	Color
252	687	408	1,055.2	279.27	240.9	98	12.3	Blue
1,716	6,694	3,825	0.0	0.07	0.1	0	0.8	Dark Blue

Assay Class: High Sensitivity DNA Assay
 Data Path: C:\...ents and Settings\Bioanalyzer\2014-01-30\2014-01-30_004.xad

Created: 1/30/2014 4:28:23 PM
 Modified: 1/30/2014 5:15:53 PM

Electropherogram Summary Continued ...



Overall Results for sample 4 : sample 5

Number of peaks found: 24 Corr. Area 1: 506.7
 Noise: 1.3 Corr. Area 2: 90.7

Peak table for sample 4 : sample 5

Peak	Aligned Migration Time [s]	Size [bp]	Conc. [pg/μl]	Molarity [pmol/l]	Observations
1	43.00	35	125.00	5,411.3	Lower Marker
2	53.04	128	11.86	139.9	
3	69.25	312	13.67	66.5	
4	70.00	321	11.36	53.7	
5	71.03	334	25.47	115.7	
6	72.44	351	45.19	195.2	
7	73.07	359	22.87	96.6	
8	74.14	372	23.35	95.2	
9	74.85	380	29.28	116.6	
10	76.05	395	57.17	219.2	
11	76.96	409	30.84	114.2	
12	78.12	429	42.06	148.5	
13	79.45	452	24.95	83.5	
14	80.32	468	59.49	192.7	
15	82.93	516	19.04	55.9	
16	83.81	535	13.93	39.5	
17	85.55	572	6.26	16.6	
18	86.25	587	4.24	10.9	
19	94.01	980	1.95	3.0	
20	102.01	2,246	2.76	1.9	
21	102.88	2,491	3.83	2.3	
22	103.38	2,631	3.92	2.3	
23	104.50	2,947	7.53	3.9	
24	106.16	4,147	7.77	2.8	
25	109.43	6,704	64.57	14.6	

Assay Class: High Sensitivity DNA Assay
 Data Path: C:\...ents and Settings\Bioanalyzer\2014-01-30\2014-01-30_004.xad



Created: 1/30/2014 4:28:23 PM
 Modified: 1/30/2014 5:15:53 PM

Electropherogram Summary Continued ...

... Peak table for sample 4 : sample 5

Peak	Aligned Migration Time [s]	Size [bp]	Conc. [pg/ μ l]	Molarity [pmol/l]	Observations
26	113.00	10,380	75.00	10.9	Upper Marker

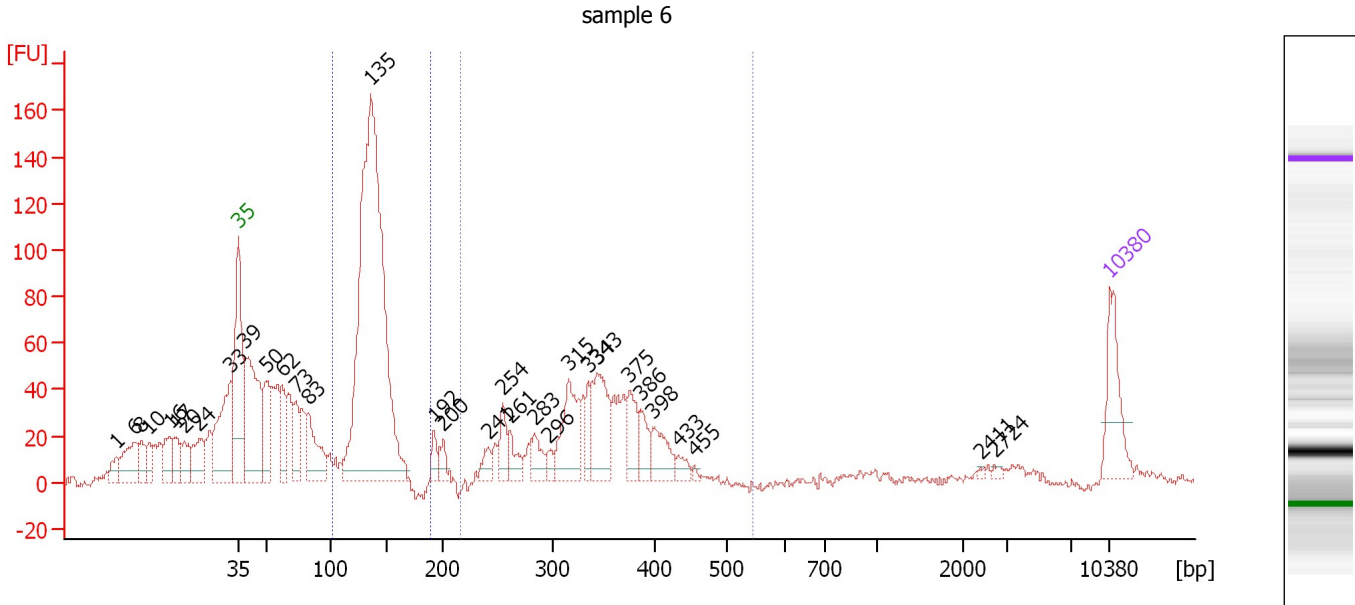
Region table for sample 4 : sample 5

From [bp]	To [bp]	Average Size [bp]	Molarity [pmol/l]	Conc. [pg/ μ l]	Corr. Area	% of Total	Size distribution in CV [%]	Color
261	693	429	2,125.3	581.89	506.7	74	16.0	
4,318	8,195	6,266	18.9	78.01	90.7	13	11.9	

Assay Class: High Sensitivity DNA Assay
 Data Path: C:\...ents and Settings\Bioanalyzer\2014-01-30\2014-01-30_004.xad

Created: 1/30/2014 4:28:23 PM
 Modified: 1/30/2014 5:15:53 PM

Electropherogram Summary Continued ...



Overall Results for sample 5 : sample 6

Number of peaks found: 32 Corr. Area 1: 556.8
 Noise: 2.0 Corr. Area 2: 687.0

Peak table for sample 5 : sample 6


Peak	Aligned Migration Time [s]	Size [bp]	Conc. [pg/μl]	Molarity [pmol/l]	Observations
1	33.15	1	0.00	0.0	
2	34.65	6	0.00	0.0	
3	35.21	8	0.00	0.0	
4	35.85	10	0.00	0.0	
5	37.48	16	0.00	0.0	
6	37.99	17	0.00	0.0	
7	38.63	20	0.00	0.0	
8	39.87	24	0.00	0.0	
9	42.36	33	0.00	0.0	
10	43.00	35	125.00	5,411.3	Lower Marker
11	43.56	39	312.10	12,220.8	
12	45.23	50	112.48	3,423.4	
13	46.51	62	88.65	2,165.8	
14	47.62	73	72.44	1,509.5	
15	48.65	83	122.71	2,251.3	
16	53.66	135	1,222.27	13,680.4	
17	58.71	192	31.06	245.1	
18	59.44	200	29.11	220.3	
19	63.04	241	28.45	179.0	
20	64.24	254	45.51	271.2	
21	64.83	261	38.95	226.1	
22	66.76	283	41.27	221.2	
23	67.96	296	17.16	87.8	
24	69.54	315	129.25	621.1	
25	71.09	334	43.51	197.3	

Assay Class: High Sensitivity DNA Assay
 Data Path: C:\...ents and Settings\Bioanalyzer\2014-01-30\2014-01-30_004.xad



Created: 1/30/2014 4:28:23 PM
 Modified: 1/30/2014 5:15:53 PM

Electropherogram Summary Continued ...

... Peak table for sample 5 : sample 6

Peak	Aligned Migration Time [s]	Size [bp]	Conc. [pg/ μ l]	Molarity [pmol/l]	Observations
26	71.77	343	125.63	555.6	
27	74.43	375	62.85	253.8	
28	75.28	386	38.39	150.8	
29	76.31	398	56.51	215.0	
30	78.32	433	17.85	62.5	
31	79.61	455	4.51	15.0	
32	102.60	2,411	2.36	1.5	
33	103.71	2,724	4.43	2.5	
34	 113.00	10,380	75.00	10.9	Upper Marker

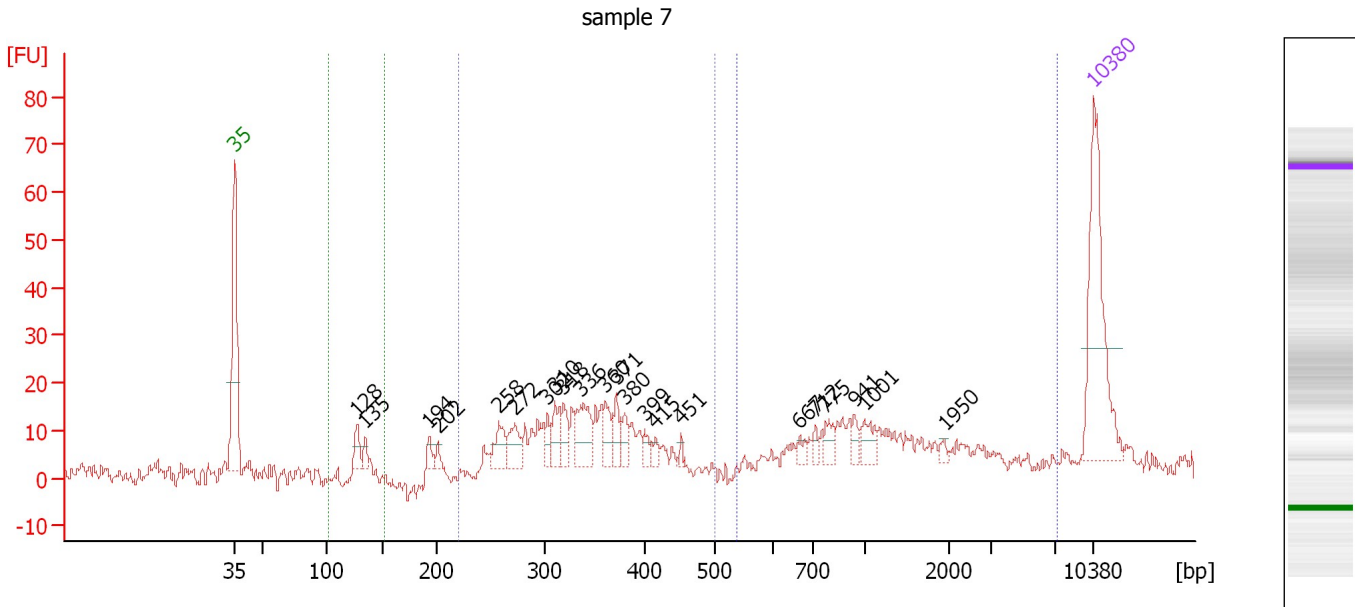
Region table for sample 5 : sample 6

From [bp]	To [bp]	Average Size [bp]	Molarity [pmol/l]	Conc. [pg/ μ l]	Corr. Area	% of Total	Size distribution in CV [%]	Color
102	189	136	13,479.4	1,208.07	687.0	30	7.8	
215	545	339	3,485.3	755.68	556.8	25	14.7	

Assay Class: High Sensitivity DNA Assay
 Data Path: C:\...ents and Settings\Bioanalyzer\2014-01-30\2014-01-30_004.xad

Created: 1/30/2014 4:28:23 PM
 Modified: 1/30/2014 5:15:53 PM

Electropherogram Summary Continued ...



Overall Results for sample 6 : sample 7

Number of peaks found: 22 Corr. Area 2: 122.6
 Noise: 2.2 Corr. Area 3: 15.9
 Corr. Area 1: 209.6

Peak table for sample 6 : sample 7




Peak	Aligned Migration Time [s]	Size [bp]	Conc. [pg/μl]	Molarity [pmol/l]	Observations
1	43.00	35	125.00	5,411.3	Lower Marker
2	52.99	128	14.31	169.5	
3	53.64	135	7.85	88.0	
4	58.85	194	7.64	59.8	
5	59.59	202	5.43	40.7	
6	64.54	258	18.64	109.6	
7	65.84	272	20.07	111.7	
8	68.49	302	10.80	54.1	
9	69.10	310	15.89	77.7	
10	69.79	318	16.60	79.0	
11	71.23	336	31.98	144.2	
12	73.22	360	17.39	73.1	
13	74.09	371	12.44	50.8	
14	74.79	380	11.58	46.2	
15	76.39	399	7.18	27.2	
16	77.31	415	5.09	18.6	
17	79.35	451	2.62	8.8	
18	89.03	667	4.89	11.1	
19	90.29	712	4.77	10.2	
20	91.16	775	10.27	20.1	
21	93.46	941	6.41	10.3	
22	94.28	1,001	11.54	17.5	
23	100.80	1,950	2.75	2.1	
24	113.00	10,380	75.00	10.9	Upper Marker

Assay Class: High Sensitivity DNA Assay
Data Path: C:\...ents and Settings\Bioanalyzer\2014-01-30\2014-01-30_004.xad

Created: 1/30/2014 4:28:23 PM
Modified: 1/30/2014 5:15:53 PM

Electropherogram Summary Continued ...

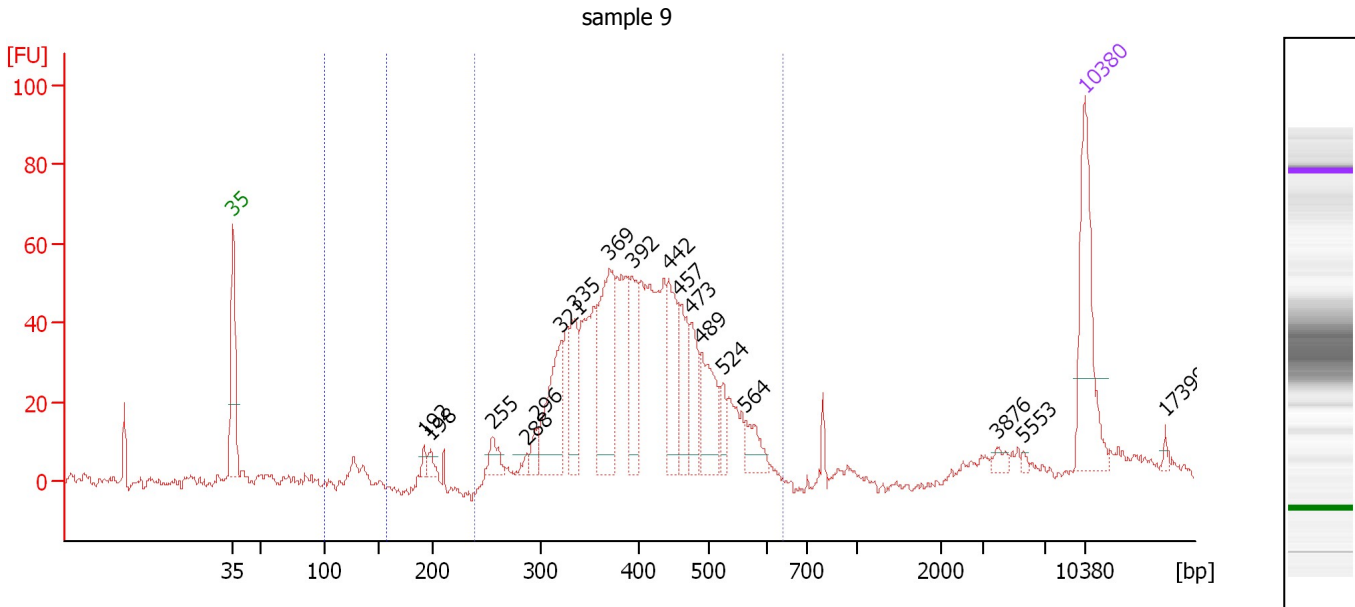
... Region table for sample 6 : sample 7

From [bp]	To [bp]	Average Size [bp]	Molarity [pmol/l]	Conc. [pg/μl]	Corr. Area	% of Total	Size distribution in CV [%]	Color
102	153	131	313.2	27.15	15.9	4	3.9	
221	499	336	1,276.3	274.80	209.6	53	14.9	
536	7,214	1,391	185.1	124.29	122.6	31	69.4	

Assay Class: High Sensitivity DNA Assay
 Data Path: C:\...ents and Settings\Bioanalyzer\2014-01-30\2014-01-30_004.xad

Created: 1/30/2014 4:28:23 PM
 Modified: 1/30/2014 5:15:53 PM

Electropherogram Summary Continued ...



Overall Results for sample 7 : sample 9

Number of peaks found: 18 Corr. Area 1: 869.8
 Noise: 1.3 Corr. Area 2: 5.3

Peak table for sample 7 : sample 9

Peak	Aligned Migration Time [s]	Size [bp]	Conc. [pg/μl]	Molarity [pmol/l]	Observations
1	43.00	35	125.00	5,411.3	Lower Marker
2	58.74	192	7.42	58.5	
3	59.26	198	8.43	64.4	
4	64.35	255	18.14	107.6	
5	67.20	288	5.60	29.5	
6	67.98	296	13.30	68.0	
7	70.00	321	84.85	400.6	
8	71.14	335	54.16	245.0	
9	73.95	369	119.00	488.2	
10	75.83	392	54.72	211.3	
11	78.85	442	65.94	226.0	
12	79.69	457	49.91	165.6	
13	80.65	473	40.74	130.4	
14	81.53	489	58.68	181.9	
15	83.28	524	15.87	45.9	
16	85.17	564	22.32	60.0	
17	105.81	3,876	5.95	2.3	
18	107.96	5,553	2.23	0.6	
19	113.00	10,380	75.00	10.9	Upper Marker
20	119.62	17,399	0.00	0.0	

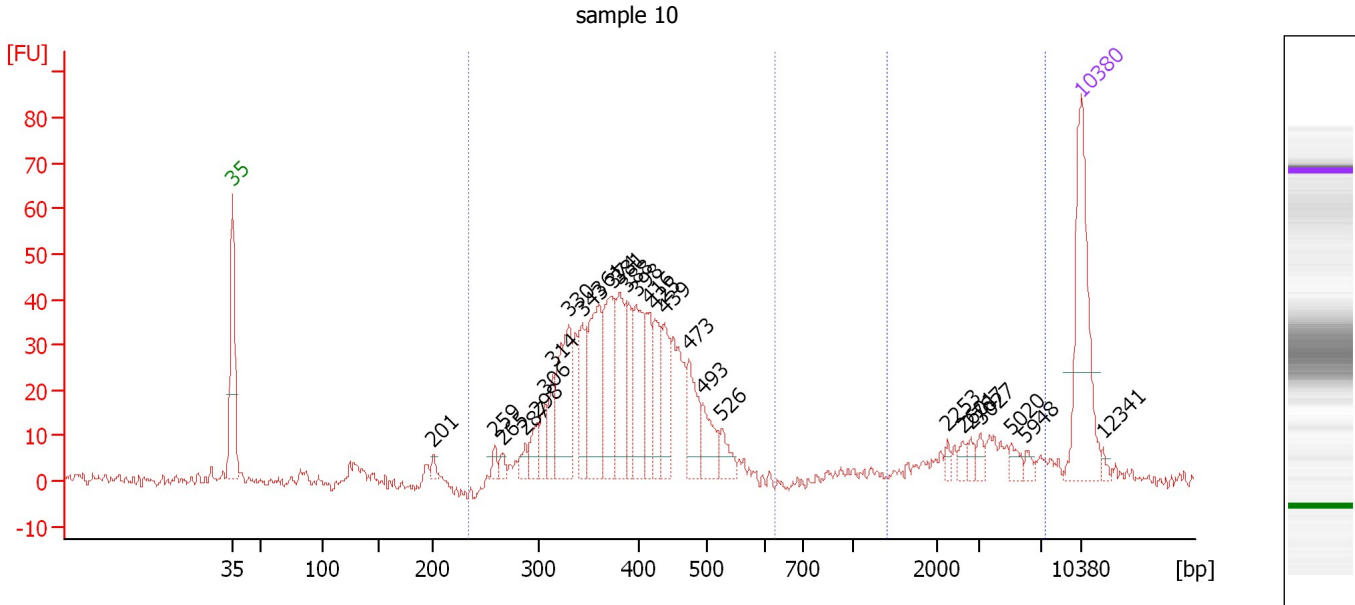
Region table for sample 7 : sample 9

From [bp]	To [bp]	Average Size [bp]	Molarity [pmol/l]	Conc. [pg/μl]	Corr. Area	% of Total	Size distribution in CV [%]	Color
101	157	130	97.8	8.38	5.3	1	3.1	Blue
239	643	407	3,840.2	992.11	869.8	92	17.5	Dark Blue

Assay Class: High Sensitivity DNA Assay
 Data Path: C:\...ents and Settings\Bioanalyzer\2014-01-30\2014-01-30_004.xad

Created: 1/30/2014 4:28:23 PM
 Modified: 1/30/2014 5:15:53 PM

Electropherogram Summary Continued ...



Overall Results for sample 8 : sample 10

Number of peaks found: 27 Corr. Area 1: 645.4
 Noise: 1.3 Corr. Area 2: 72.6

Peak table for sample 8 : sample 10

Peak	Aligned Migration Time [s]	Size [bp]	Conc. [pg/μl]	Molarity [pmol/l]	Observations
1	43.00	35	125.00	5,411.3	Lower Marker
2	59.51	201	5.83	43.9	
3	64.62	259	7.00	41.0	
4	65.23	265	6.50	37.1	
5	67.17	287	9.10	48.0	
6	68.09	298	15.47	78.7	
7	68.75	306	21.72	107.7	
8	69.42	314	23.02	111.2	
9	70.74	330	78.85	362.1	
10	71.84	343	40.43	178.4	
11	73.25	361	76.71	322.2	
12	74.30	374	66.66	270.3	
13	74.92	381	55.45	220.4	
14	75.49	388	34.18	133.4	
15	76.28	398	52.61	200.3	
16	77.34	416	35.59	129.7	
17	77.87	425	36.11	128.8	
18	78.66	439	34.03	117.6	
19	80.64	473	36.22	116.0	
20	81.79	493	26.09	80.2	
21	83.37	526	14.33	41.3	
22	102.04	2,253	3.41	2.3	
23	103.27	2,601	5.43	3.2	
24	103.93	2,787	3.99	2.2	
25	104.72	3,027	5.64	2.8	

Assay Class: High Sensitivity DNA Assay
 Data Path: C:\...ents and Settings\Bioanalyzer\2014-01-30\2014-01-30_004.xad



Created: 1/30/2014 4:28:23 PM
 Modified: 1/30/2014 5:15:53 PM

Electropherogram Summary Continued ...

... Peak table for sample 8 : sample 10

Peak	Aligned Migration Time [s]	Size [bp]	Conc. [pg/μl]	Molarity [pmol/l]	Observations
26	107.28	5,020	6.03	1.8	
27	108.47	5,948	3.74	1.0	
28	113.00	10,380	75.00	10.9	Upper Marker
29	114.85	12,341	0.00	0.0	

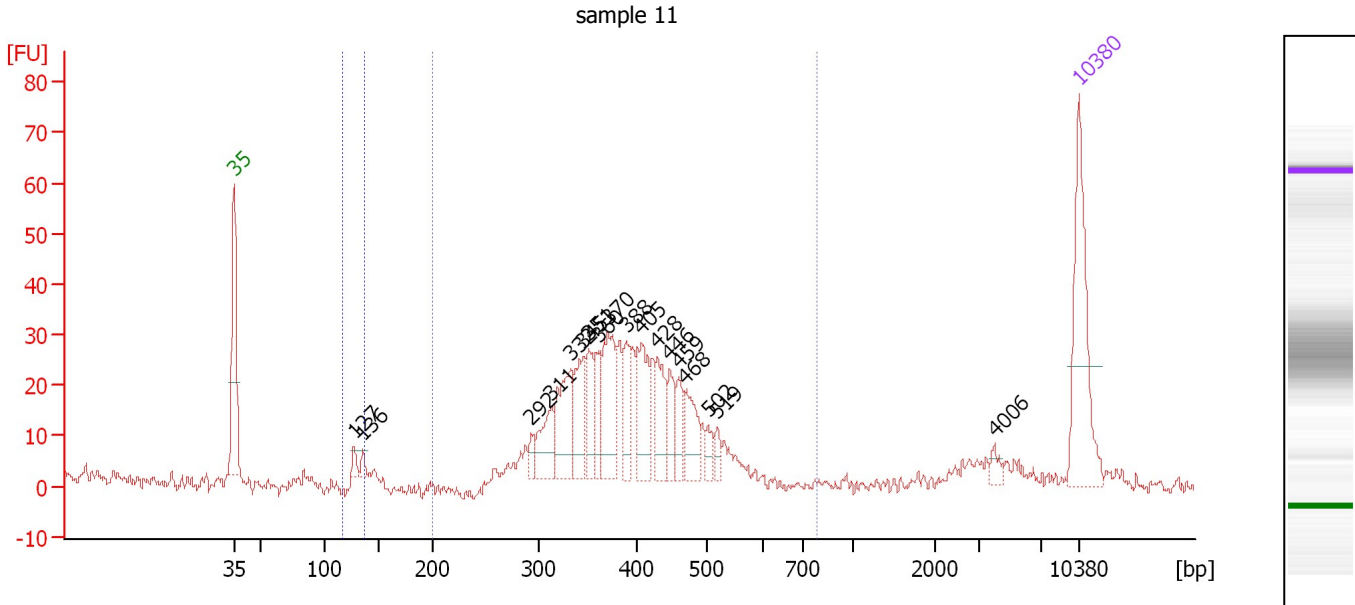
Region table for sample 8 : sample 10

From [bp]	To [bp]	Average Size [bp]	Molarity [pmol/l]	Conc. [pg/μl]	Corr. Area	% of Total	Size distribution in CV [%]	Color
234	627	392	3,068.4	768.68	645.4	85	16.1	
1,406	7,295	3,555	31.5	62.49	72.6	10	43.5	

Assay Class: High Sensitivity DNA Assay
 Data Path: C:\...ents and Settings\Bioanalyzer\2014-01-30\2014-01-30_004.xad

Created: 1/30/2014 4:28:23 PM
 Modified: 1/30/2014 5:15:53 PM

Electropherogram Summary Continued ...



Overall Results for sample 9 : sample 11

Number of peaks found: 18 Corr. Area 1: 463.2
 Noise: 1.4 Corr. Area 2: 8.6

Peak table for sample 9 : sample 11

Peak	Aligned Migration Time [s]	Size [bp]	Conc. [pg/μl]	Molarity [pmol/l]	Observations
1	43.00	35	125.00	5,411.3	Lower Marker
2	52.94	127	8.28	98.5	
3	53.69	136	6.53	72.9	
4	67.60	292	10.52	54.5	
5	69.23	311	37.96	184.6	
6	70.91	332	62.03	283.0	
7	71.97	345	42.58	187.0	
8	72.41	351	32.82	141.9	
9	73.21	360	29.94	125.9	
10	74.00	370	64.12	262.6	
11	75.50	388	27.88	108.8	
12	76.74	405	52.90	197.8	
13	78.07	428	35.82	126.7	
14	79.08	446	24.34	82.7	
15	79.83	459	21.51	71.0	
16	80.32	468	35.21	114.1	
17	82.26	502	10.16	30.7	
18	83.06	519	9.03	26.4	
19	105.98	4,006	5.80	2.2	
20	113.00	10,380	75.00	10.9	Upper Marker

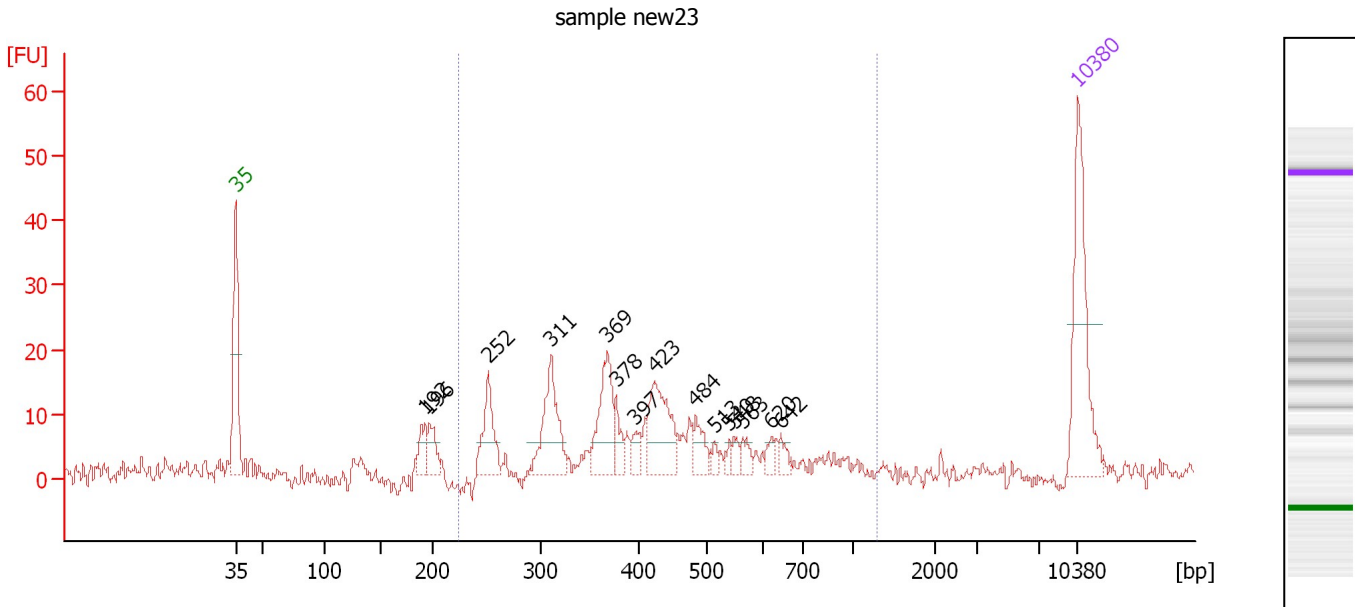
Region table for sample 9 : sample 11

From [bp]	To [bp]	Average Size [bp]	Molarity [pmol/l]	Conc. [pg/μl]	Corr. Area	% of Total	Size distribution in CV [%]	Color
117	137	130	188.9	16.25	8.6	2	2.7	Blue
200	780	395	2,573.0	645.70	463.2	87	17.0	Grey

Assay Class: High Sensitivity DNA Assay
 Data Path: C:\...ents and Settings\Bioanalyzer\2014-01-30\2014-01-30_004.xad

Created: 1/30/2014 4:28:23 PM
 Modified: 1/30/2014 5:15:53 PM

Electropherogram Summary Continued ...



Overall Results for sample 10 : sample new23

Number of peaks found: 15 Corr. Area 1: 226.6
 Noise: 1.5

Peak table for sample 10 : sample new23

Peak	Aligned Migration Time [s]	Size [bp]	Conc. [pg/μl]	Molarity [pmol/l]	Observations
1	43.00	35	125.00	5,411.3	Lower Marker
2	58.73	192	20.36	160.5	
3	59.08	196	22.88	176.7	
4	64.00	252	47.34	285.1	
5	69.23	311	68.77	334.6	
6	73.92	369	57.97	238.0	
7	74.63	378	15.49	62.1	
8	76.23	397	12.73	48.5	
9	77.78	423	62.05	222.1	
10	81.23	484	19.62	61.5	
11	82.78	513	5.77	17.0	
12	84.07	540	4.78	13.4	
13	84.42	548	7.47	20.7	
14	85.13	563	9.10	24.5	
15	87.53	620	7.32	17.9	
16	88.23	642	8.48	20.0	
17	113.00	10,380	75.00	10.9	Upper Marker

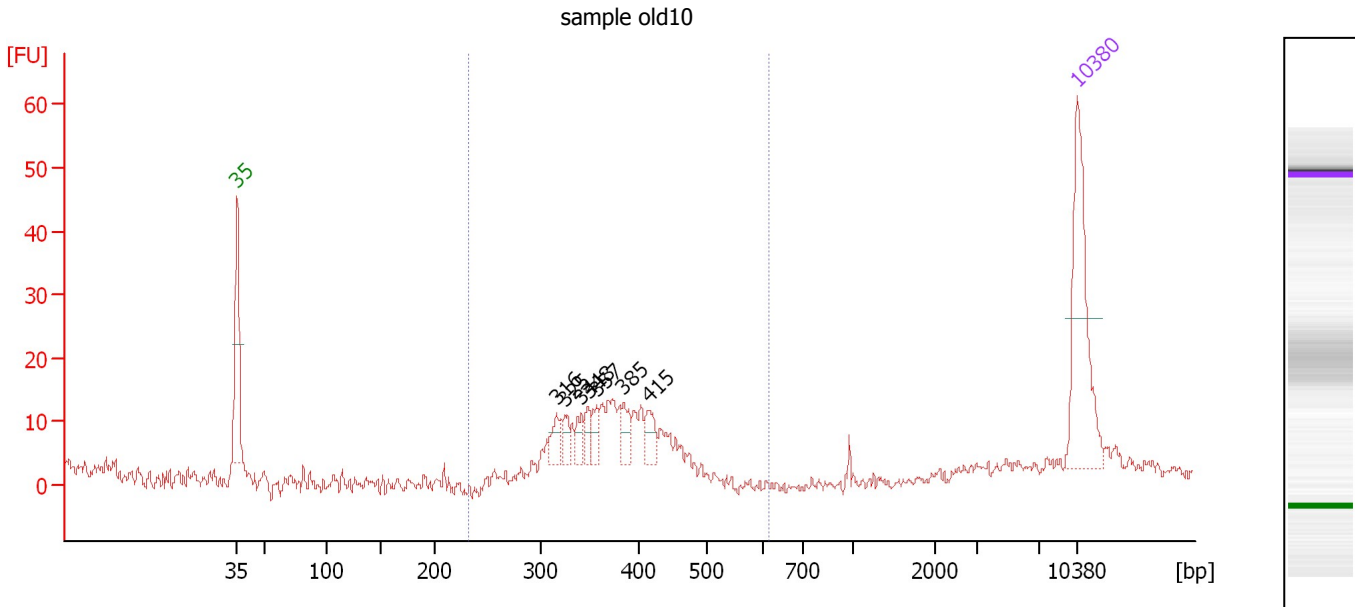
Region table for sample 10 : sample new23

From [bp]	To [bp]	Average Size [bp]	Molarity [pmol/l]	Conc. [pg/μl]	Corr. Area	% of Total	Size distribution in CV [%]	Color
224	1,285	436	1,628.8	410.49	226.6	72	34.2	Blue

Assay Class: High Sensitivity DNA Assay
 Data Path: C:\...ents and Settings\Bioanalyzer\2014-01-30\2014-01-30_004.xad

Created: 1/30/2014 4:28:23 PM
 Modified: 1/30/2014 5:15:53 PM

Electropherogram Summary Continued ...



Overall Results for sample 11 : sample old10

Number of peaks found: 7 Corr. Area 1: 138.2
 Noise: 1.2

Peak table for sample 11 : sample old10

Peak	Aligned Migration Time [s]	Size [bp]	Conc. [pg/μl]	Molarity [pmol/l]	Observations
1	43.00	35	125.00	5,411.3	Lower Marker
2	69.62	316	14.55	69.7	
3	70.33	325	10.81	50.4	
4	71.67	341	12.24	54.3	
5	72.24	348	11.33	49.3	
6	72.96	357	12.29	52.2	
7	75.22	385	14.83	58.4	
8	77.31	415	16.27	59.4	
9	113.00	10,380	75.00	10.9	Upper Marker

Region table for sample 11 : sample old10

From [bp]	To [bp]	Average Size [bp]	Molarity [pmol/l]	Conc. [pg/μl]	Corr. Area	% of Total	Size distribution in CV [%]	Color
232	613	376	925.1	226.16	138.2	82	11.8	Blue

Assay Class: High Sensitivity DNA Assay
Data Path: C:\...ents and Settings\Bioanalyzer\2014-01-30\2014-01-30_004.xad

Created: 1/30/2014 4:28:23 PM
Modified: 1/30/2014 5:15:53 PM

Gel Image

