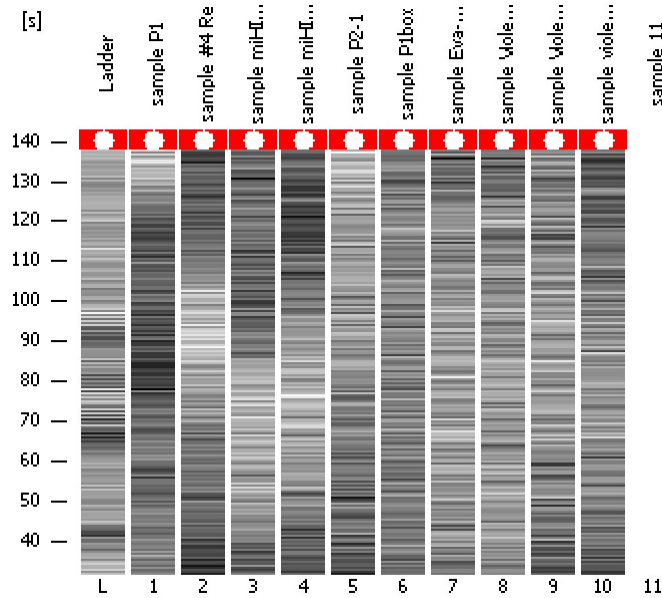


Assay Class: High Sensitivity DNA Assay
Data Path: C:\...ttings\Bioanalyzer\2014-01-31\2014-01-31\2014-01-31_001.xad

Created: 1/31/2014 2:19:15 PM
Modified: 1/31/2014 2:58:07 PM

Electrophoresis File Run Summary



Instrument Information:

Instrument Name: DE13701086 Firmware: C.01.069
Serial#: DE13701086 Type: G2938B

Assay Information:

Assay Origin Path: C:\Program Files\Agilent\2100 bioanalyzer\2100 expert\assays\dsDNA\High Sensitivity DNA.xsy
Assay Class: High Sensitivity DNA Assay
Version: 1.03
Assay Comments: Copyright © 2003-2010 Agilent Technologies

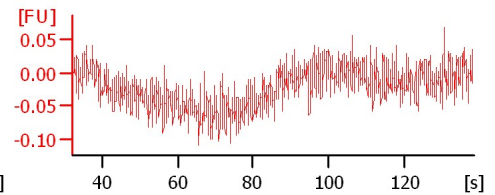
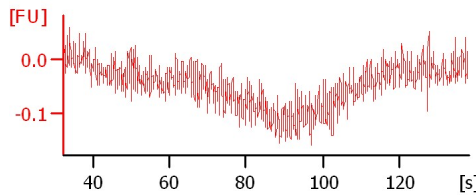
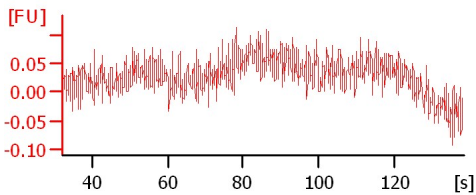
Chip Information:

Chip Lot #:
Reagent Kit Lot #:
Chip Comments:

sample P1

sample #4 Re

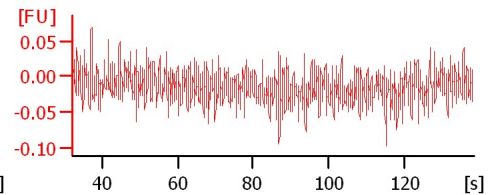
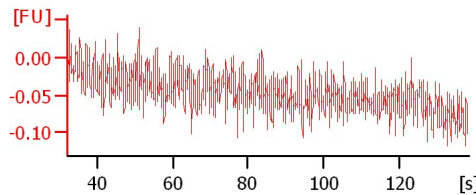
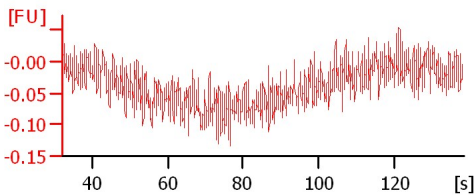
sample miHIEC 2



sample miHIEC 4

sample P2-1

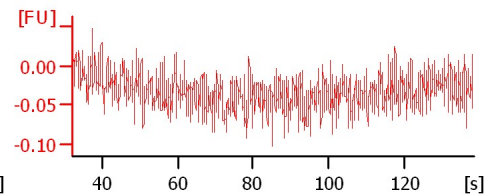
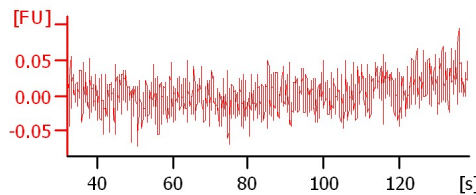
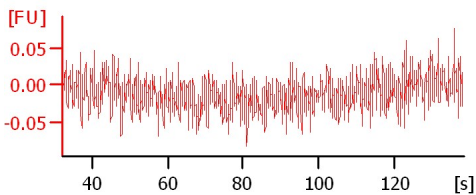
sample P1box



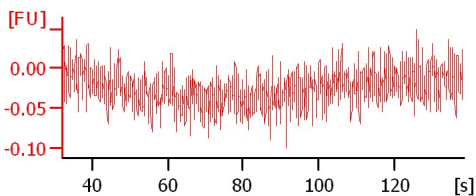
sample Eva-12x

sample Violeta 4

sample Violeta 19



sample violeta 20



Assay Class: High Sensitivity DNA Assay
 Data Path: C:\...ttings\Bioanalyzer\2014-01-31\2014-01-31\2014-01-31_001.xad

Created: 1/31/2014 2:19:15 PM
 Modified: 1/31/2014 2:58:07 PM

Electrophoresis File Run Summary (Chip Summary)

Sample Name	Sample Comment	Rest. Digest	Status	Observation	Result Label	Result Color
sample P1		<input type="checkbox"/>	✓			
sample #4 Re		<input type="checkbox"/>	✓			
sample miHIEC 2		<input type="checkbox"/>	✓			
sample miHIEC 4		<input type="checkbox"/>	✓			
sample P2-1		<input type="checkbox"/>	✓			
sample P1box		<input type="checkbox"/>	✓			
sample Eva-12x		<input type="checkbox"/>	✓			
sample Violeta 4		<input type="checkbox"/>	✓			
sample Violeta 19		<input type="checkbox"/>	✓			
sample violeta 20		<input type="checkbox"/>	✓			
sample 11		<input type="checkbox"/>	✓			
Ladder		<input type="checkbox"/>	✓			

Chip Lot # **Reagent Kit Lot #**

Chip Comments :

Assay Class: High Sensitivity DNA Assay
Data Path: C:\...ttings\Bioanalyzer\2014-01-31\2014-01-31\2014-01-31_001.xad

Created: 1/31/2014 2:19:15 PM
Modified: 1/31/2014 2:58:07 PM

Electrophoresis Assay Details

General Analysis Settings

Number of Available Sample and Ladder Wells (Max.) : 12
Minimum Visible Range [s] : 32
Maximum Visible Range [s] : 138
Start Analysis Time Range [s] : 33
End Analysis Time Range [s] : 137.5
Ladder Concentration [pg/μl] : 1950
Uses Standard Area for Ladder Fragments
Lower Marker Concentration [pg/μl] : 125
Upper Marker Concentration [pg/μl] : 75
Used Upper Marker for Quantitation
Standard Curve Fit is Point to Point
Show Data Aligned to Lower and Upper Marker

Integrator Settings

Integration Start Time [s] : 33.05
Integration End Time [s] : 137
Slope Threshold : 0.8
Height Threshold [FU] : 20
Area Threshold : 0.1
Width Threshold [s] : 0.6
Baseline Plateau [s] : 0.5

Filter Settings

Filter Width [s] : 0.5
Polynomial Order : 4

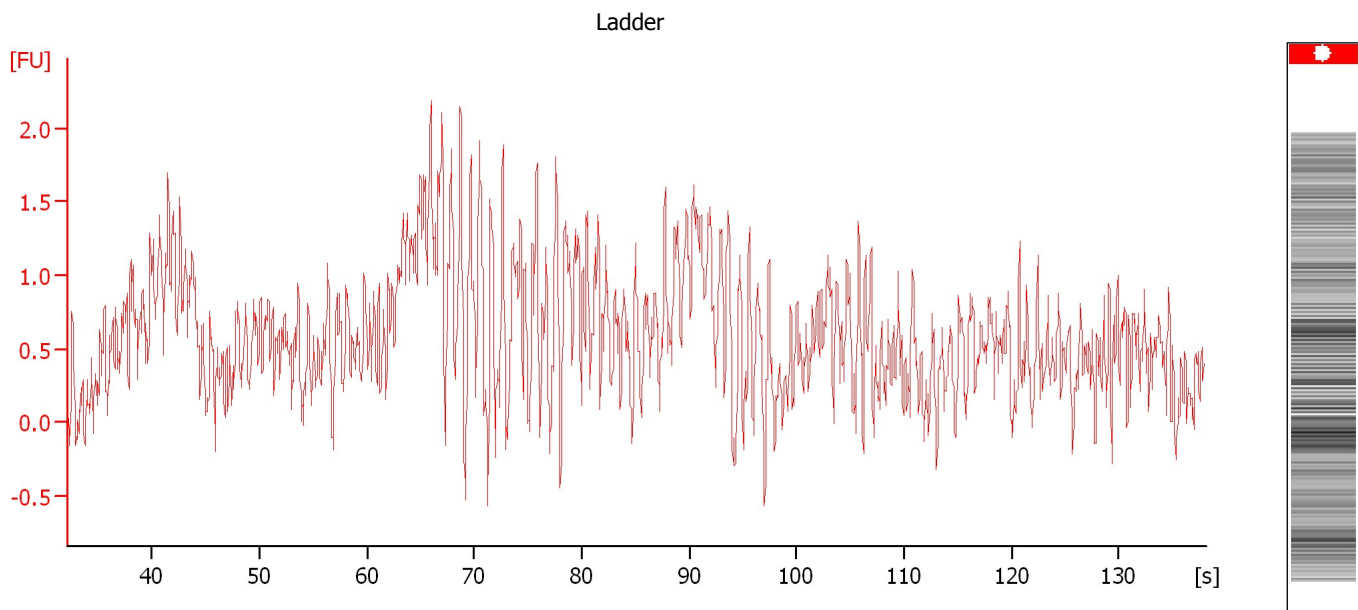
Ladder

Ladder Peak	Size	Area
1	35	160
2	50	210
3	100	208
4	150	221
5	200	242
6	300	270
7	400	305
8	500	306
9	600	336
10	700	321
11	1000	366
12	2000	413
13	3000	411
14	7000	400
15	10380	214

Assay Class: High Sensitivity DNA Assay
Data Path: C:\...ttings\Bioanalyzer\2014-01-31\2014-01-31\2014-01-31_001.xad

Created: 1/31/2014 2:19:15 PM
Modified: 1/31/2014 2:58:07 PM

Electropherogram Summary



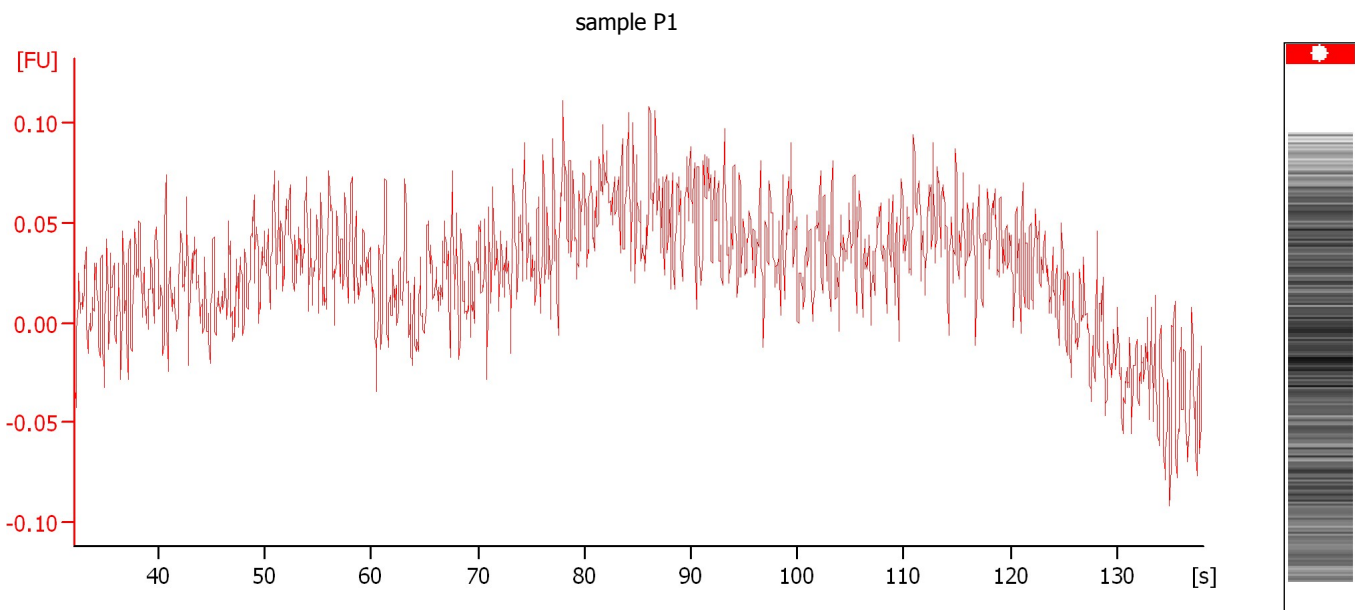
Overall Results for Ladder

Noise: 0.5

Assay Class: High Sensitivity DNA Assay
Data Path: C:\...ttings\Bioanalyzer\2014-01-31\2014-01-31\2014-01-31_001.xad

Created: 1/31/2014 2:19:15 PM
Modified: 1/31/2014 2:58:07 PM

Electropherogram Summary Continued ...



Overall Results for sample 1 : sample P1

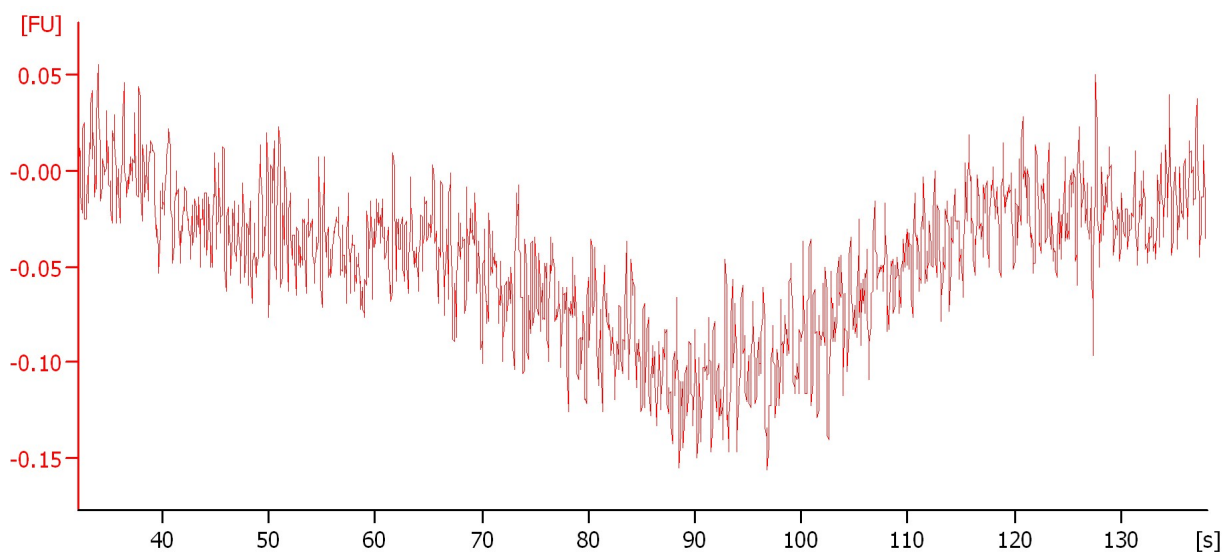
Noise: 0.0

Assay Class: High Sensitivity DNA Assay
Data Path: C:\...ttings\Bioanalyzer\2014-01-31\2014-01-31\2014-01-31_001.xad

Created: 1/31/2014 2:19:15 PM
Modified: 1/31/2014 2:58:07 PM

Electropherogram Summary Continued ...

sample #4 Re



Overall Results for sample 2 : sample #4 Re

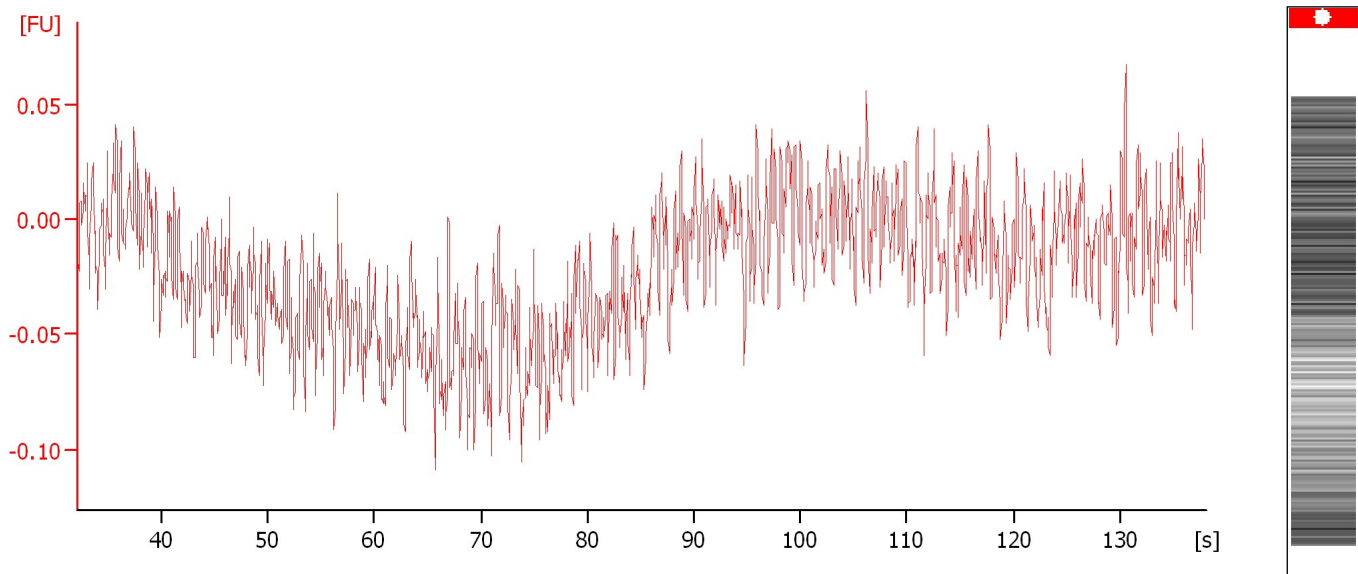
Noise: 0.0

Assay Class: High Sensitivity DNA Assay
Data Path: C:\...ttings\Bioanalyzer\2014-01-31\2014-01-31\2014-01-31_001.xad

Created: 1/31/2014 2:19:15 PM
Modified: 1/31/2014 2:58:07 PM

Electropherogram Summary Continued ...

sample miHIEC 2



Overall Results for sample 3 : sample miHIEC 2

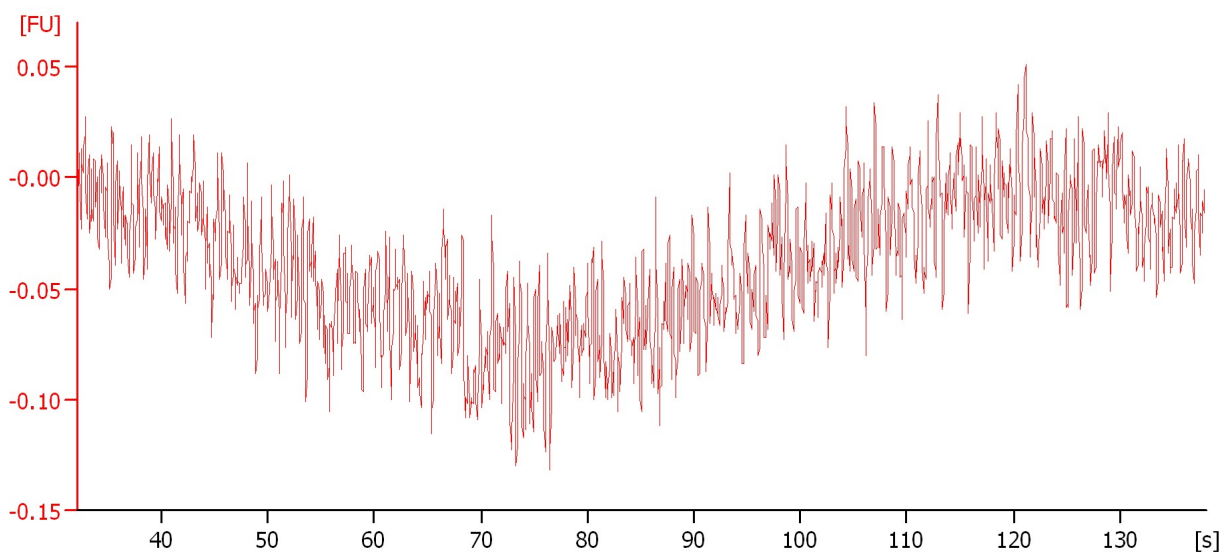
Noise: 0.0

Assay Class: High Sensitivity DNA Assay
Data Path: C:\...ttings\Bioanalyzer\2014-01-31\2014-01-31\2014-01-31_001.xad

Created: 1/31/2014 2:19:15 PM
Modified: 1/31/2014 2:58:07 PM

Electropherogram Summary Continued ...

sample miHIEC 4



Overall Results for sample 4 : sample miHIEC 4

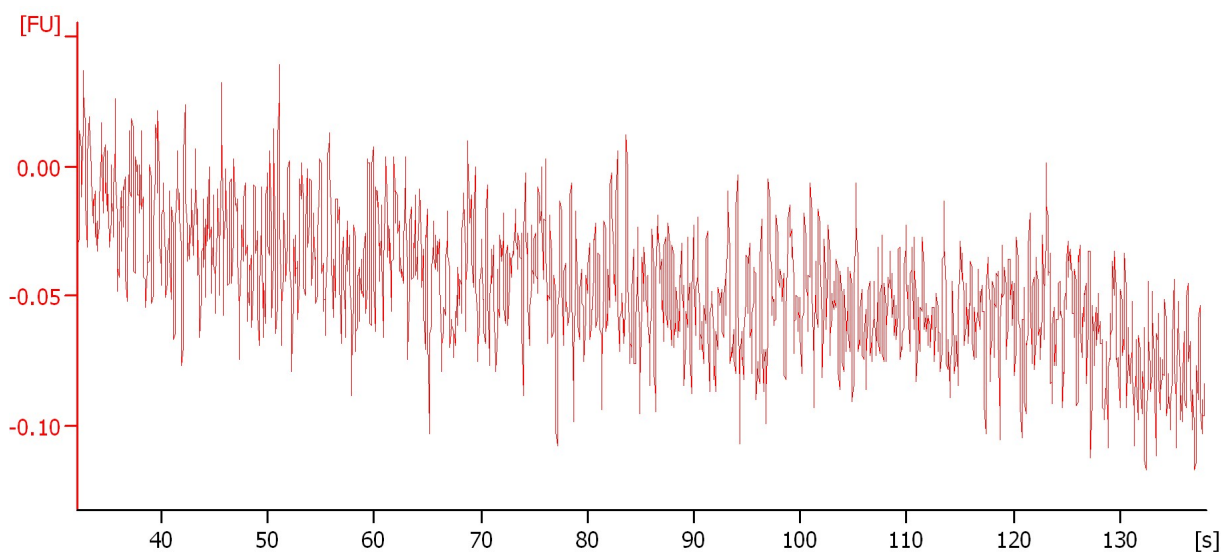
Noise: 0.0

Assay Class: High Sensitivity DNA Assay
Data Path: C:\...ttings\Bioanalyzer\2014-01-31\2014-01-31\2014-01-31_001.xad

Created: 1/31/2014 2:19:15 PM
Modified: 1/31/2014 2:58:07 PM

Electropherogram Summary Continued ...

sample P2-1



Overall Results for sample 5 : sample P2-1

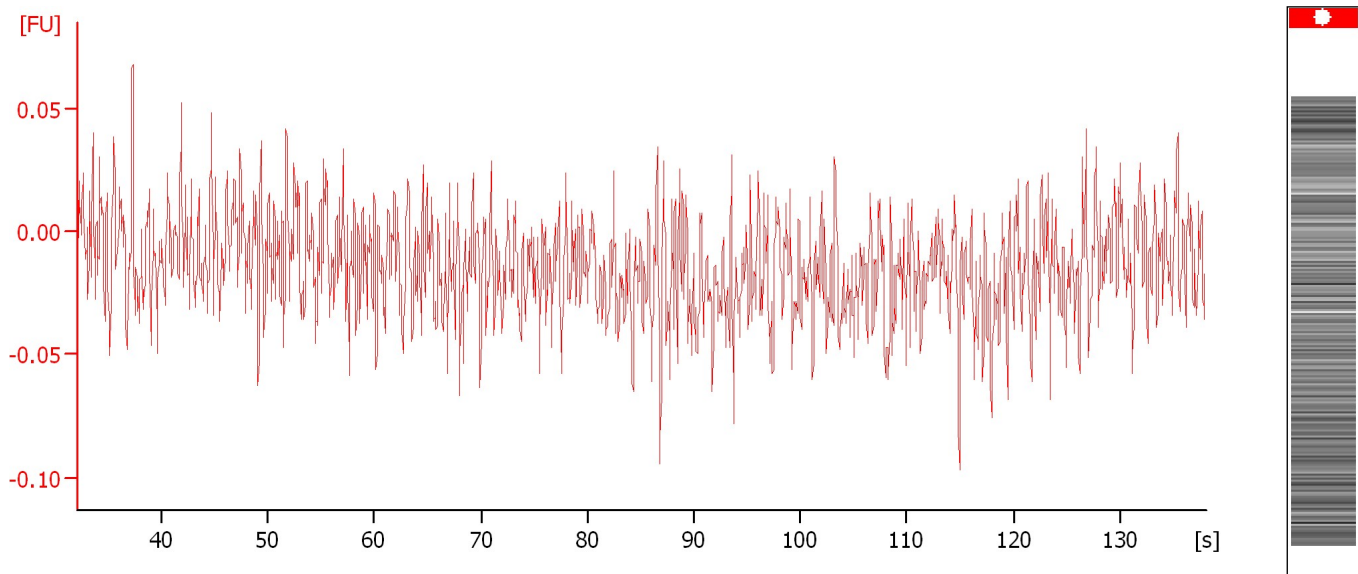
Noise: 0.0

Assay Class: High Sensitivity DNA Assay
Data Path: C:\...ttings\Bioanalyzer\2014-01-31\2014-01-31\2014-01-31_001.xad

Created: 1/31/2014 2:19:15 PM
Modified: 1/31/2014 2:58:07 PM

Electropherogram Summary Continued ...

sample P1box



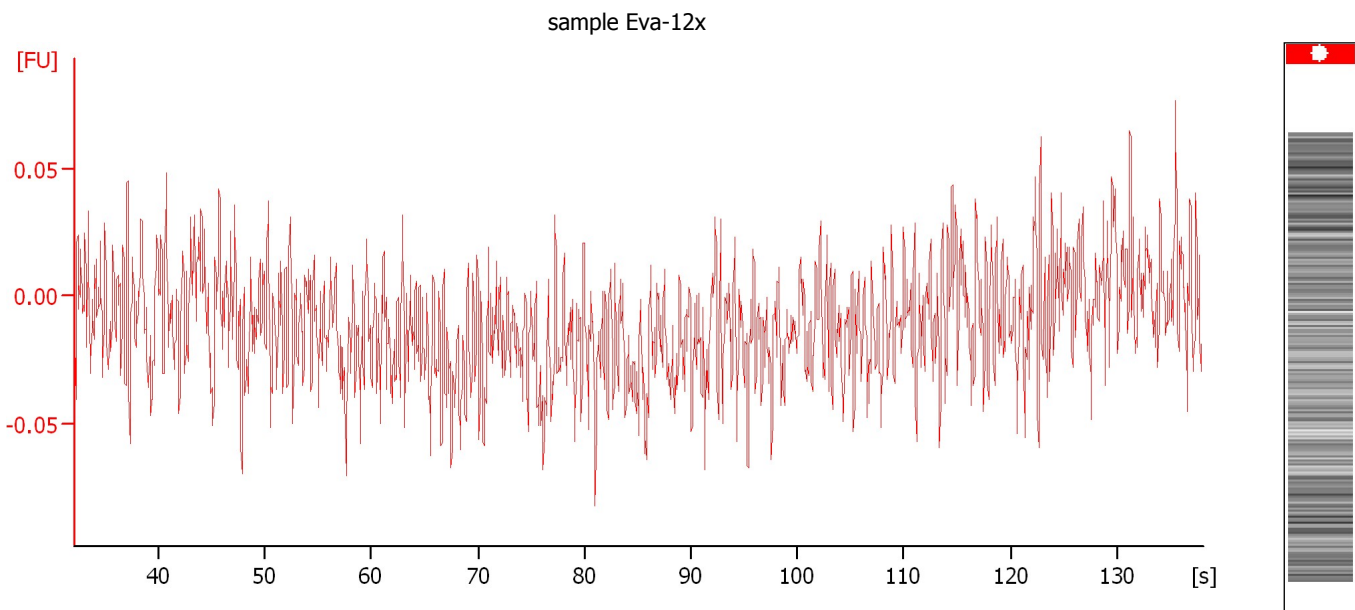
Overall Results for sample 6 : sample P1box

Noise: 0.0

Assay Class: High Sensitivity DNA Assay
Data Path: C:\...ttings\Bioanalyzer\2014-01-31\2014-01-31\2014-01-31_001.xad

Created: 1/31/2014 2:19:15 PM
Modified: 1/31/2014 2:58:07 PM

Electropherogram Summary Continued ...



Overall Results for sample 7 : sample Eva-12x

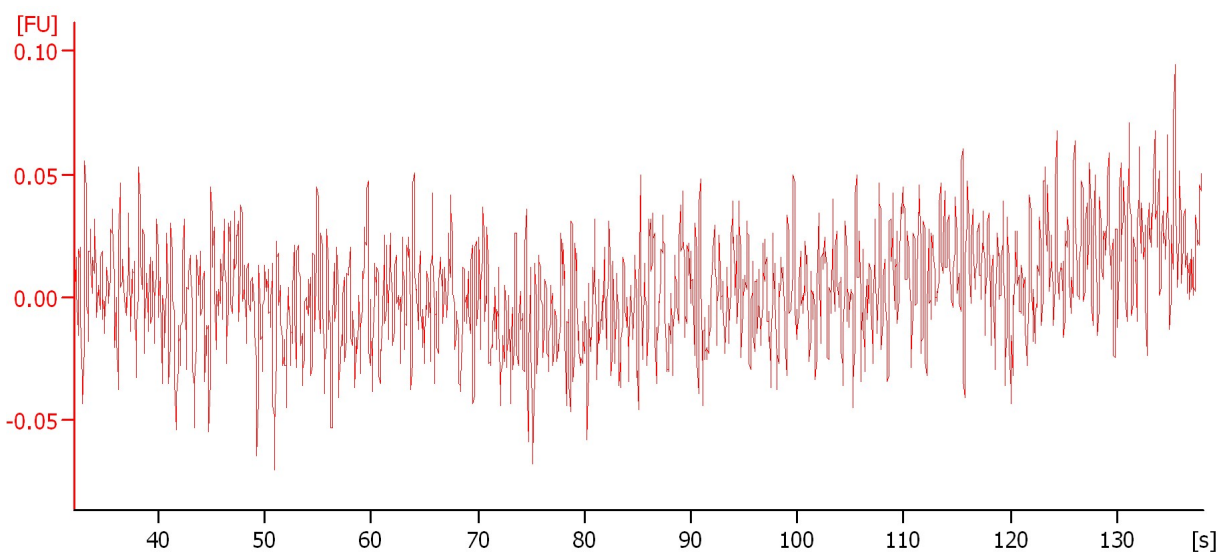
Noise: 0.0

Assay Class: High Sensitivity DNA Assay
Data Path: C:\...ttings\Bioanalyzer\2014-01-31\2014-01-31\2014-01-31_001.xad

Created: 1/31/2014 2:19:15 PM
Modified: 1/31/2014 2:58:07 PM

Electropherogram Summary Continued ...

sample Violeta 4



Overall Results for sample 8 : sample Violeta 4

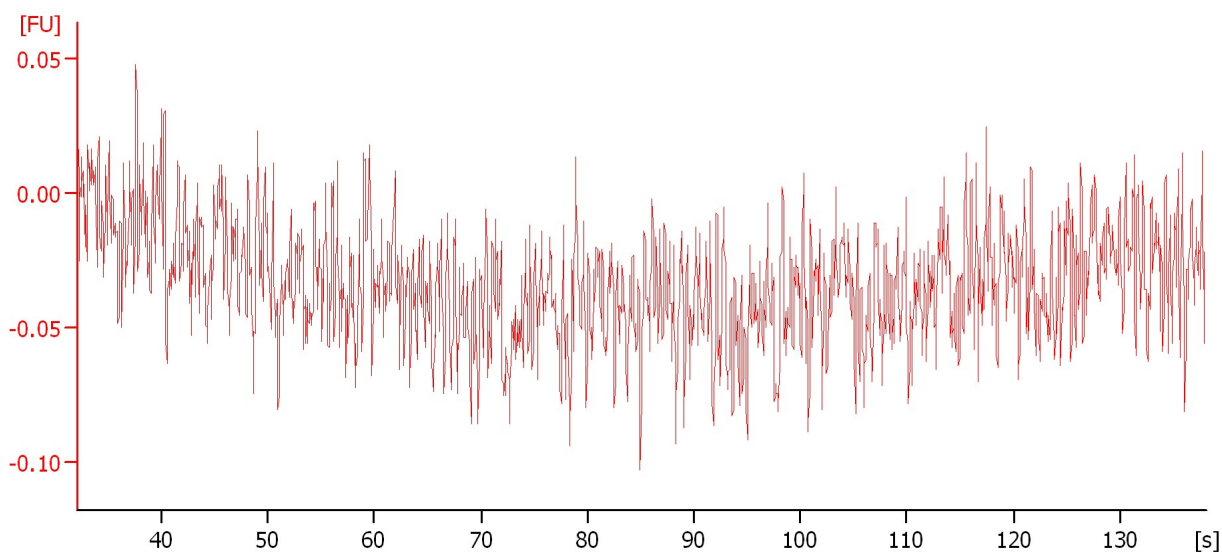
Noise: 0.0

Assay Class: High Sensitivity DNA Assay
Data Path: C:\...ttings\Bioanalyzer\2014-01-31\2014-01-31\2014-01-31_001.xad

Created: 1/31/2014 2:19:15 PM
Modified: 1/31/2014 2:58:07 PM

Electropherogram Summary Continued ...

sample Violeta 19



Overall Results for sample 9 : sample Violeta 19

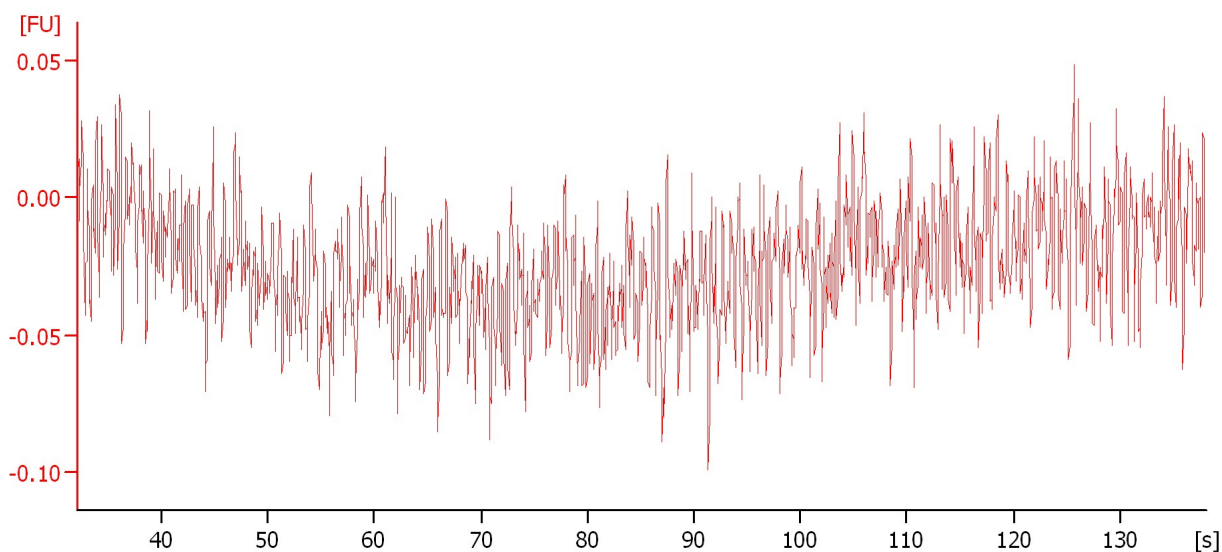
Noise: 0.0

Assay Class: High Sensitivity DNA Assay
Data Path: C:\...ttings\Bioanalyzer\2014-01-31\2014-01-31\2014-01-31_001.xad

Created: 1/31/2014 2:19:15 PM
Modified: 1/31/2014 2:58:07 PM

Electropherogram Summary Continued ...

sample violeta 20



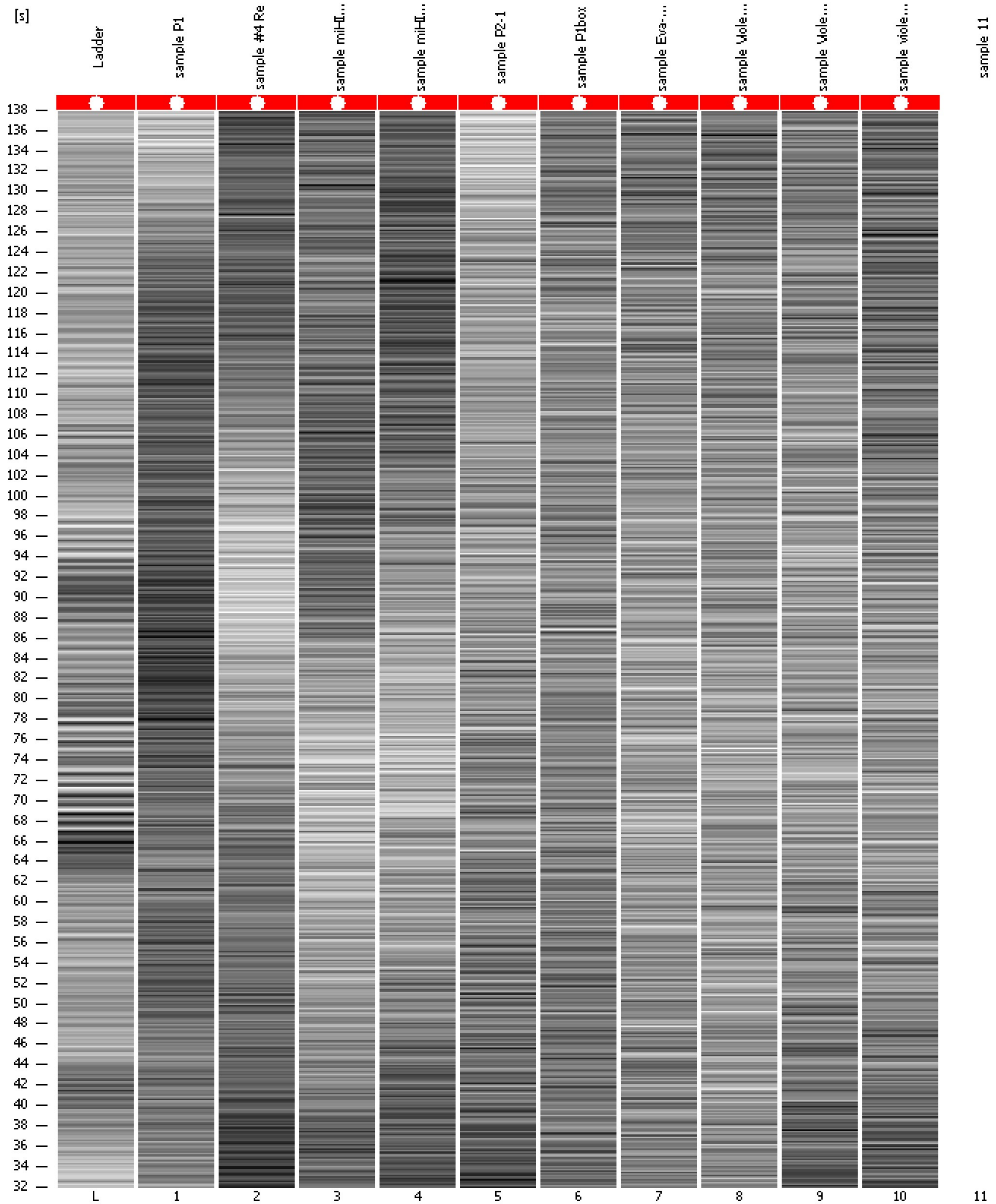
Overall Results for sample 10 : sample violeta 20

Noise: 0.0

Assay Class: High Sensitivity DNA Assay
Data Path: C:\...ttings\Bioanalyzer\2014-01-31\2014-01-31\2014-01-31_001.xad

Created: 1/31/2014 2:19:15 PM
Modified: 1/31/2014 2:58:07 PM

Gel Image



Assay Class: High Sensitivity DNA Assay
Data Path: C:\...ttings\Bioanalyzer\2014-01-31\2014-01-31\2014-01-31_001.xad

Created: 1/31/2014 2:19:15 PM
Modified: 1/31/2014 2:58:07 PM

Invalid Samples

Sample 11 has not been run, no results available.