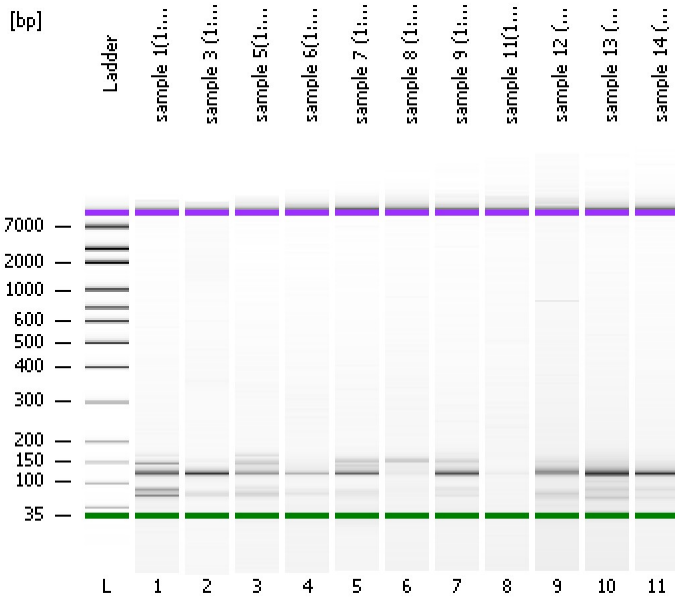


Assay Class: High Sensitivity DNA Assay
Data Path: C:\...ents and Settings\Bioanalyzer\2014-02-04\2014-02-04_004.xad

Created: 2/4/2014 11:55:02 AM
Modified: 2/4/2014 12:36:20 PM

Electrophoresis File Run Summary



Instrument Information:

Instrument Name: DE13701086 Firmware: C.01.069
Serial#: DE13701086 Type: G2938B

Assay Information:

Assay Origin Path: C:\Program Files\Agilent\2100 bioanalyzer\2100 expert\assays\dsDNA\High Sensitivity DNA.xsy

Assay Class: High Sensitivity DNA Assay
Version: 1.03
Assay Comments: Copyright © 2003-2010 Agilent Technologies

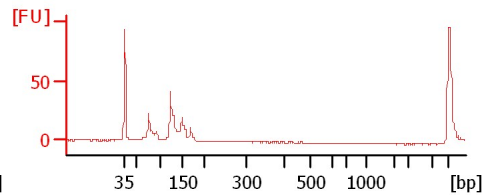
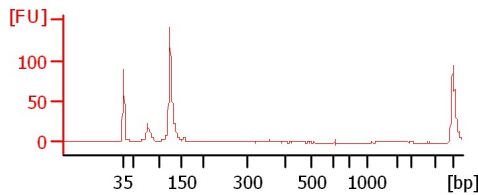
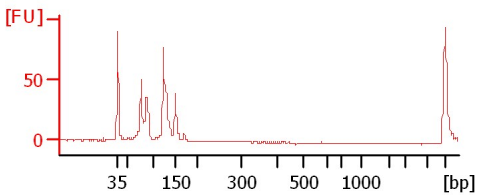
Chip Information:

Chip Lot #:
Reagent Kit Lot #:
Chip Comments:

sample 1(1:10)

sample 3 (1:20)

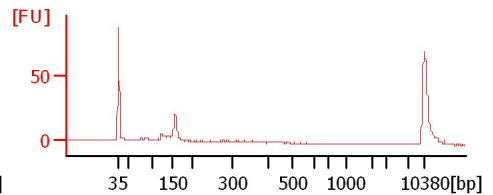
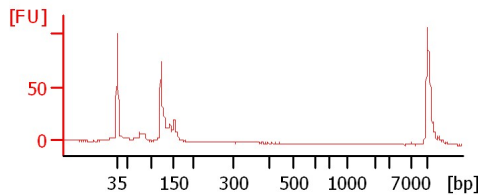
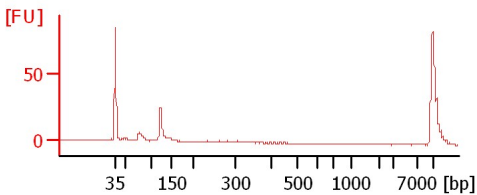
sample 5(1:10)



sample 6(1:20)

sample 7 (1:10)

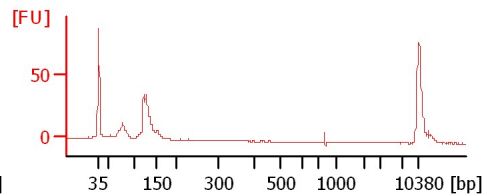
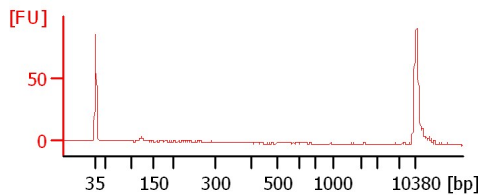
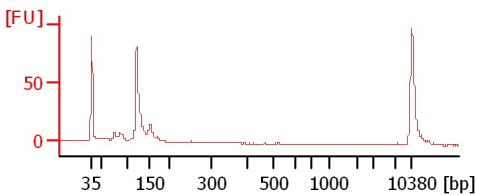
sample 8 (1:20)



sample 9 (1:20)

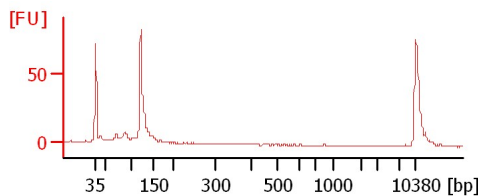
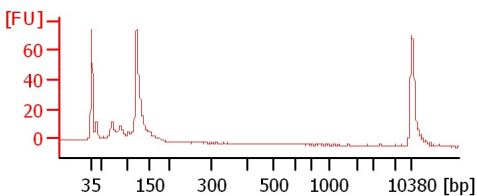
sample 11(1:10)

sample 12 (1:10)



sample 13 (1:10)

sample 14 (1:10)



Assay Class: High Sensitivity DNA Assay
Data Path: C:\...ents and Settings\Bioanalyzer\2014-02-04\2014-02-04_004.xad

Created: 2/4/2014 11:55:02 AM
Modified: 2/4/2014 12:36:20 PM

Electrophoresis File Run Summary (Chip Summary)

Sample Name	Sample Comment	Rest. Digest	Status	Observation	Result Label	Result Color
sample 1(1:10)		<input type="checkbox"/>	✓			
sample 3 (1:20)		<input type="checkbox"/>	✓			
sample 5(1:10)		<input type="checkbox"/>	✓			
sample 6(1:20)		<input type="checkbox"/>	✓			
sample 7 (1:10)		<input type="checkbox"/>	✓			
sample 8 (1:20)		<input type="checkbox"/>	✓			
sample 9 (1:20)		<input type="checkbox"/>	✓			
sample 11(1:10)		<input type="checkbox"/>	✓			
sample 12 (1:10)		<input type="checkbox"/>	✓			
sample 13 (1:10)		<input type="checkbox"/>	✓			
sample 14 (1:10)		<input type="checkbox"/>	✓			
Ladder		<input type="checkbox"/>	✓			

Chip Lot #

Reagent Kit Lot #

Chip Comments :

Assay Class: High Sensitivity DNA Assay
 Data Path: C:\...ents and Settings\Bioanalyzer\2014-02-04\2014-02-04_004.xad

Created: 2/4/2014 11:55:02 AM
 Modified: 2/4/2014 12:36:20 PM

Electrophoresis Assay Details

General Analysis Settings

Number of Available Sample and Ladder Wells (Max.) : 12
 Minimum Visible Range [s] : 32
 Maximum Visible Range [s] : 138
 Start Analysis Time Range [s] : 33
 End Analysis Time Range [s] : 137.5
 Ladder Concentration [pg/μl] : 1950
 Uses Standard Area for Ladder Fragments
 Lower Marker Concentration [pg/μl] : 125
 Upper Marker Concentration [pg/μl] : 75
 Used Upper Marker for Quantitation
 Standard Curve Fit is Point to Point
 Show Data Aligned to Lower and Upper Marker

Integrator Settings

Integration Start Time [s] : 33.05
 Integration End Time [s] : 137
 Slope Threshold : 0.8
 Height Threshold [FU] : 5
 Area Threshold : 0.1
 Width Threshold [s] : 0.6
 Baseline Plateau [s] : 0.5

Filter Settings

Filter Width [s] : 0.5
 Polynomial Order : 4

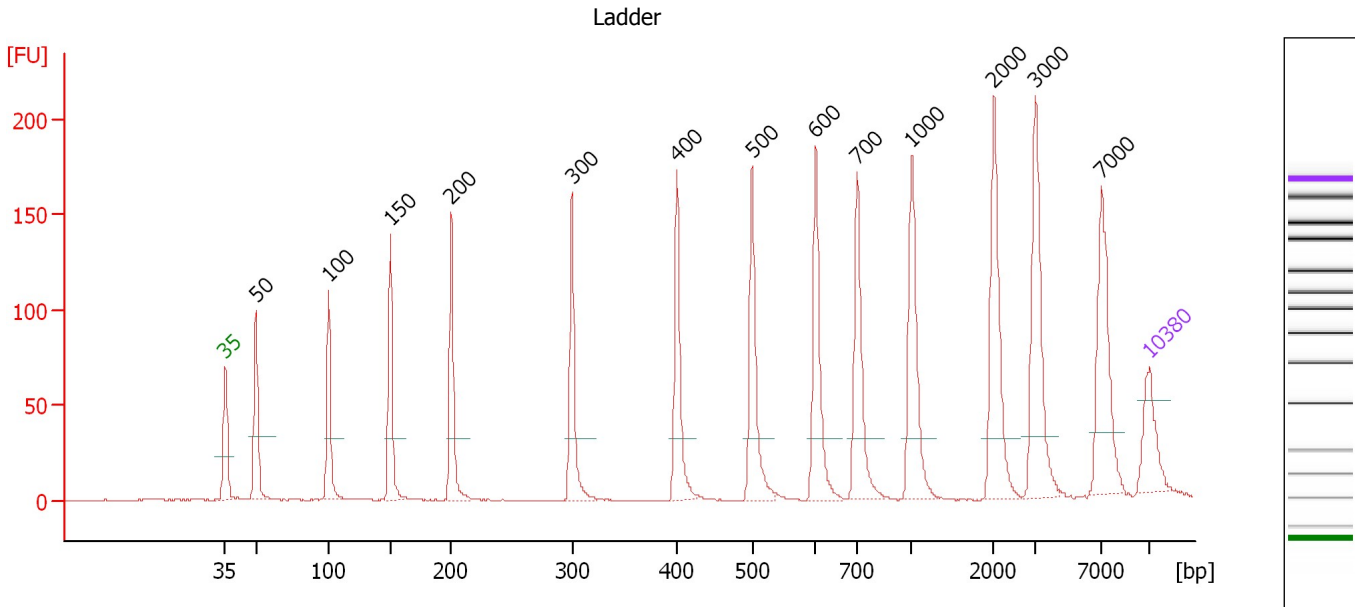
Ladder

Ladder Peak	Size	Area
1	35	160
2	50	210
3	100	208
4	150	221
5	200	242
6	300	270
7	400	305
8	500	306
9	600	336
10	700	321
11	1000	366
12	2000	413
13	3000	411
14	7000	400
15	10380	214

Assay Class: High Sensitivity DNA Assay
 Data Path: C:\...ents and Settings\Bioanalyzer\2014-02-04\2014-02-04_004.xad

Created: 2/4/2014 11:55:02 AM
 Modified: 2/4/2014 12:36:20 PM

Electropherogram Summary



Overall Results for Ladder

Noise: 0.2

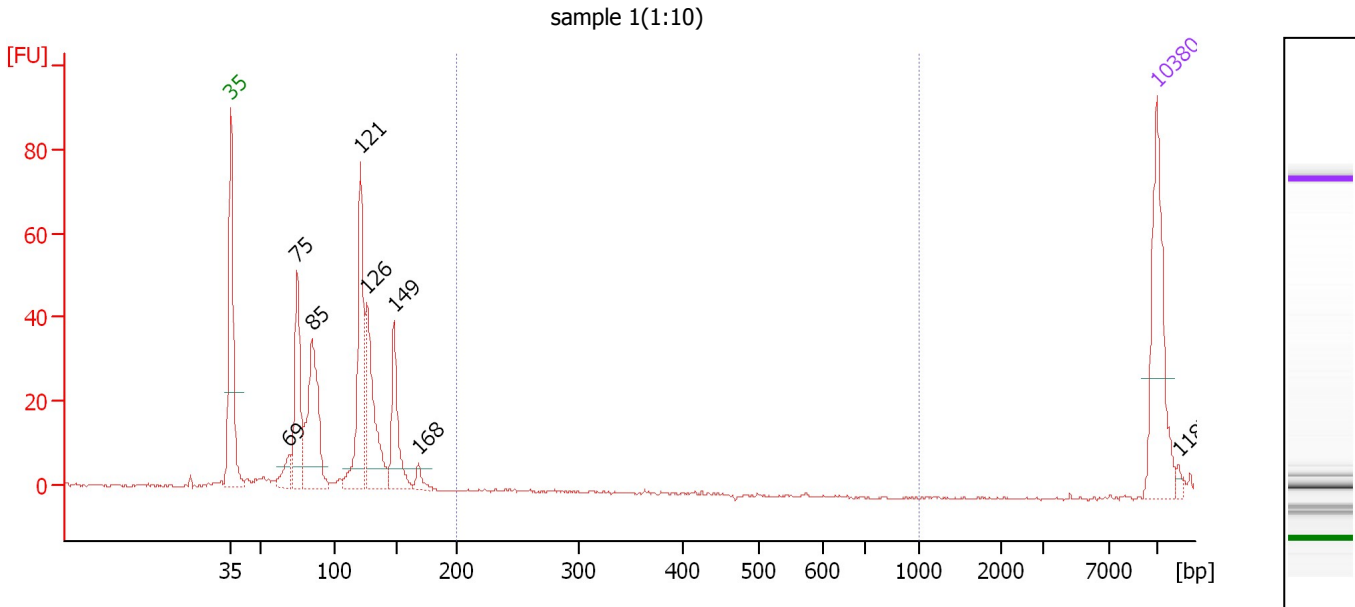
Peak table for Ladder

Peak	Aligned Migration Time [s]	Size [bp]	Conc. [pg/μl]	Molarity [pmol/l]	Observations
1	43.00	35	125.00	5,411.3	Lower Marker
2	45.30	50	150.00	4,545.5	Ladder Peak
3	50.84	100	150.00	2,272.7	Ladder Peak
4	55.48	150	150.00	1,515.2	Ladder Peak
5	60.13	200	150.00	1,136.4	Ladder Peak
6	69.26	300	150.00	757.6	Ladder Peak
7	77.21	400	150.00	568.2	Ladder Peak
8	82.91	500	150.00	454.5	Ladder Peak
9	87.71	600	150.00	378.8	Ladder Peak
10	90.86	700	150.00	324.7	Ladder Peak
11	94.98	1,000	150.00	227.3	Ladder Peak
12	101.21	2,000	150.00	113.6	Ladder Peak
13	104.36	3,000	150.00	75.8	Ladder Peak
14	109.36	7,000	150.00	32.5	Ladder Peak
15	113.00	10,380	75.00	10.9	Upper Marker

Assay Class: High Sensitivity DNA Assay
 Data Path: C:\...ents and Settings\Bioanalyzer\2014-02-04\2014-02-04_004.xad

Created: 2/4/2014 11:55:02 AM
 Modified: 2/4/2014 12:36:20 PM

Electropherogram Summary Continued ...



Overall Results for sample 1 : sample 1(1:10)

Number of peaks found: 8 Corr. Area 1: 0.0
 Noise: 0.1

Peak table for sample 1 : sample 1(1:10)

Peak	Aligned Migration Time [s]	Size [bp]	Conc. [pg/μl]	Molarity [pmol/l]	Observations
1	43.00	35	125.00	5,411.3	Lower Marker
2	47.43	69	21.99	481.1	
3	48.04	75	102.30	2,074.7	
4	49.17	85	135.27	2,413.9	
5	52.79	121	149.24	1,867.8	
6	53.28	126	114.92	1,379.0	
7	55.37	149	72.11	734.2	
8	57.19	168	10.79	97.2	
9	113.00	10,380	75.00	10.9	Upper Marker
10	114.61	11,879	0.00	0.0	

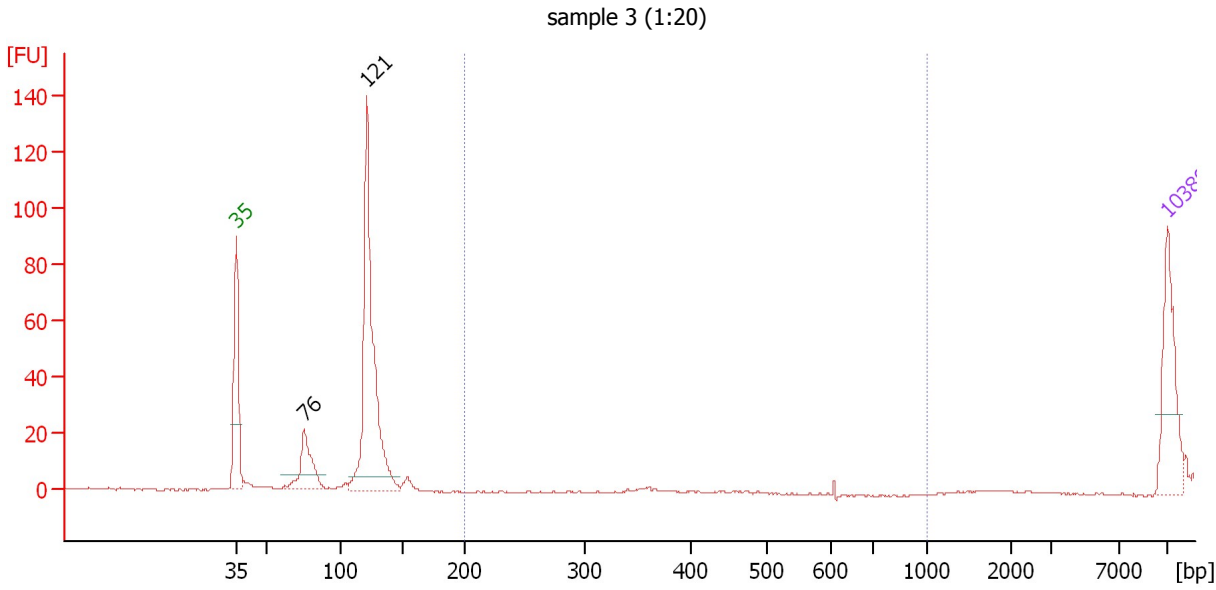
Region table for sample 1 : sample 1(1:10)

From [bp]	To [bp]	Average Size [bp]	Molarity [pmol/l]	Conc. [pg/μl]	Corr. Area	% of Total	Size distribution in CV [%]	Color
200	1,000	0	0.0	0.00	0.0	0	0.0	Blue

Assay Class: High Sensitivity DNA Assay
 Data Path: C:\...ents and Settings\Bioanalyzer\2014-02-04\2014-02-04_004.xad

Created: 2/4/2014 11:55:02 AM
 Modified: 2/4/2014 12:36:20 PM

Electropherogram Summary Continued ...



Overall Results for sample 2 : sample 3 (1:20)

Number of peaks found: 2 Corr. Area 1: 0.0
 Noise: 0.2

Peak table for sample 2 : sample 3 (1:20)

Peak	Aligned Migration Time [s]	Size [bp]	Conc. [pg/μl]	Molarity [pmol/l]	Observations
1	43.00	35	125.00	5,411.3	Lower Marker
2	48.13	76	85.72	1,718.7	
3	52.82	121	392.63	4,901.0	
4	113.00	10,380	75.00	10.9	Upper Marker

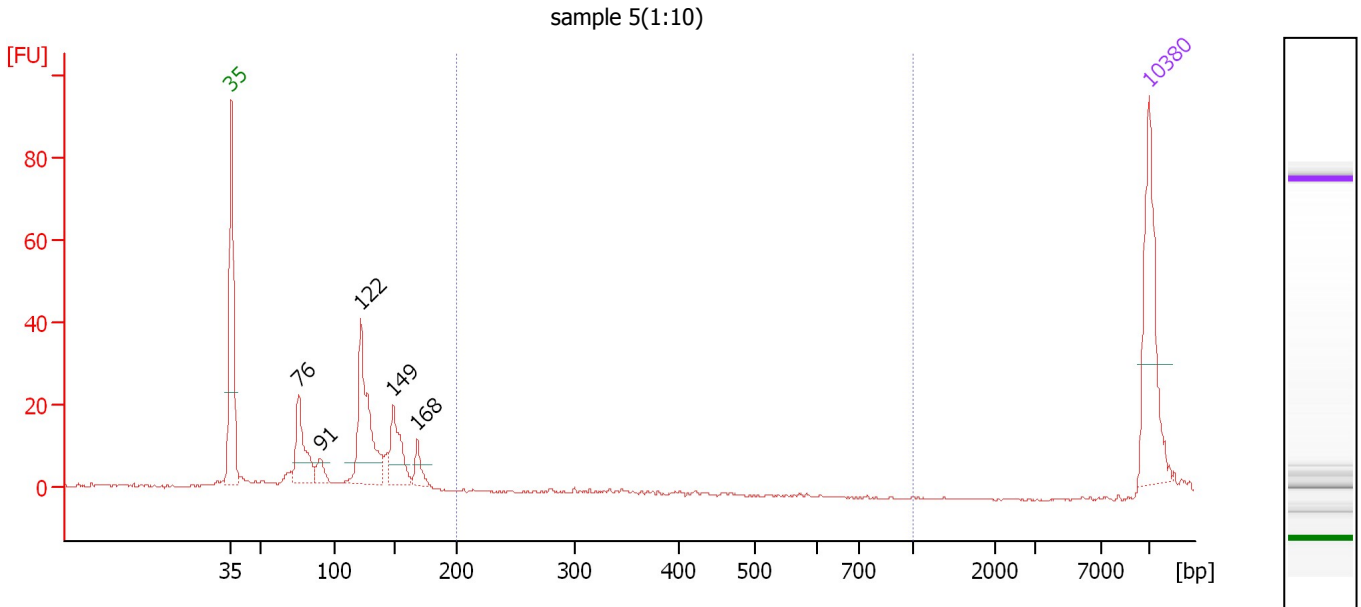
Region table for sample 2 : sample 3 (1:20)

From [bp]	To [bp]	Average Size [bp]	Molarity [pmol/l]	Conc. [pg/μl]	Corr. Area	% of Total	Size distribution in CV [%]	Color
200	1,000	607	0.0	0.00	0.0	0	0.0	Blue

Assay Class: High Sensitivity DNA Assay
 Data Path: C:\...ents and Settings\Bioanalyzer\2014-02-04\2014-02-04_004.xad

Created: 2/4/2014 11:55:02 AM
 Modified: 2/4/2014 12:36:20 PM

Electropherogram Summary Continued ...



Overall Results for sample 3 : sample 5(1:10)

Number of peaks found: 5 Corr. Area 1: 0.0
 Noise: 0.3

Peak table for sample 3 : sample 5(1:10)

Peak	Aligned Migration Time [s]	Size [bp]	Conc. [pg/μl]	Molarity [pmol/l]	Observations
1	43.00	35	125.00	5,411.3	Lower Marker
2	48.12	76	68.15	1,367.5	
3	49.79	91	15.80	264.2	
4	52.88	122	136.99	1,700.7	
5	55.36	149	59.08	601.8	
6	57.20	168	19.03	171.1	
7	113.00	10,380	75.00	10.9	Upper Marker

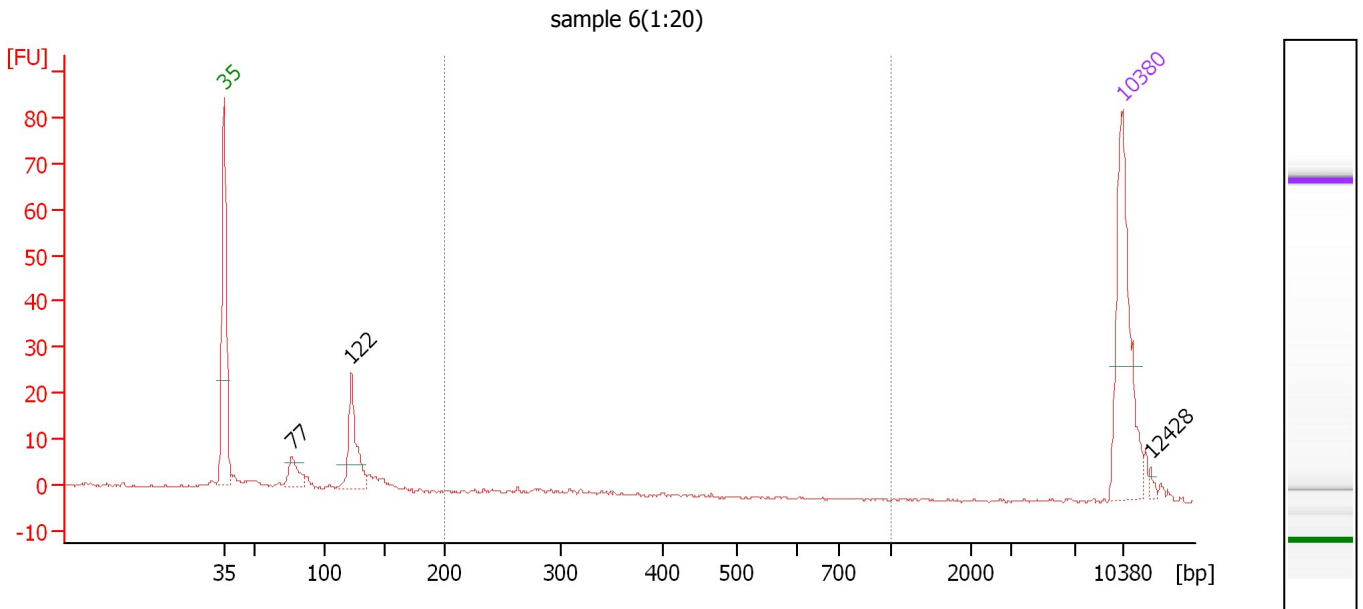
Region table for sample 3 : sample 5(1:10)

From [bp]	To [bp]	Average Size [bp]	Molarity [pmol/l]	Conc. [pg/μl]	Corr. Area	% of Total	Size distribution in CV [%]	Color
200	1,000	0	0.0	0.00	0.0	0	0.0	Blue

Assay Class: High Sensitivity DNA Assay
 Data Path: C:\...ents and Settings\Bioanalyzer\2014-02-04\2014-02-04_004.xad

Created: 2/4/2014 11:55:02 AM
 Modified: 2/4/2014 12:36:20 PM

Electropherogram Summary Continued ...



Overall Results for sample 4 : sample 6(1:20)

Number of peaks found: 3 Corr. Area 1: 4.8
 Noise: 0.2

Peak table for sample 4 : sample 6(1:20)

Peak	Aligned Migration Time [s]	Size [bp]	Conc. [pg/μl]	Molarity [pmol/l]	Observations
1	43.00	35	125.00	5,411.3	Lower Marker
2	48.24	77	21.85	432.6	
3	52.89	122	58.80	729.4	
4	113.00	10,380	75.00	10.9	Upper Marker
5	115.20	12,428	0.00	0.0	

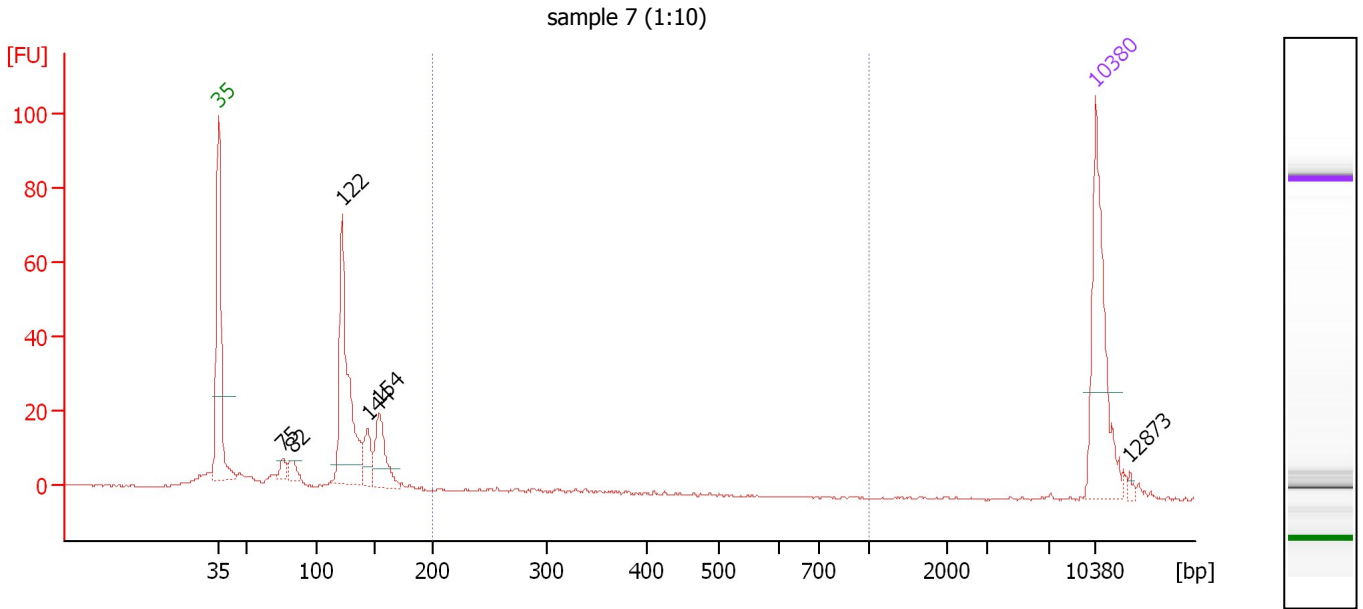
Region table for sample 4 : sample 6(1:20)

From [bp]	To [bp]	Average Size [bp]	Molarity [pmol/l]	Conc. [pg/μl]	Corr. Area	% of Total	Size distribution in CV [%]	Color
200	1,000	299	32.3	6.19	4.8	5	16.4	Blue

Assay Class: High Sensitivity DNA Assay
 Data Path: C:\...ents and Settings\Bioanalyzer\2014-02-04\2014-02-04_004.xad

Created: 2/4/2014 11:55:02 AM
 Modified: 2/4/2014 12:36:20 PM

Electropherogram Summary Continued ...



Overall Results for sample 5 : sample 7 (1:10)

Number of peaks found: 6 Corr. Area 1: 5.2
 Noise: 0.2

Peak table for sample 5 : sample 7 (1:10)

Peak	Aligned Migration Time [s]	Size [bp]	Conc. [pg/μl]	Molarity [pmol/l]	Observations
1	43.00	35	125.00	5,411.3	Lower Marker
2	48.11	75	10.09	203.0	
3	48.87	82	12.45	229.4	
4	52.87	122	162.24	2,016.2	
5	54.91	144	28.29	297.9	
6	55.85	154	48.86	480.8	
7	113.00	10,380	75.00	10.9	Upper Marker
8	115.68	12,873	0.00	0.0	

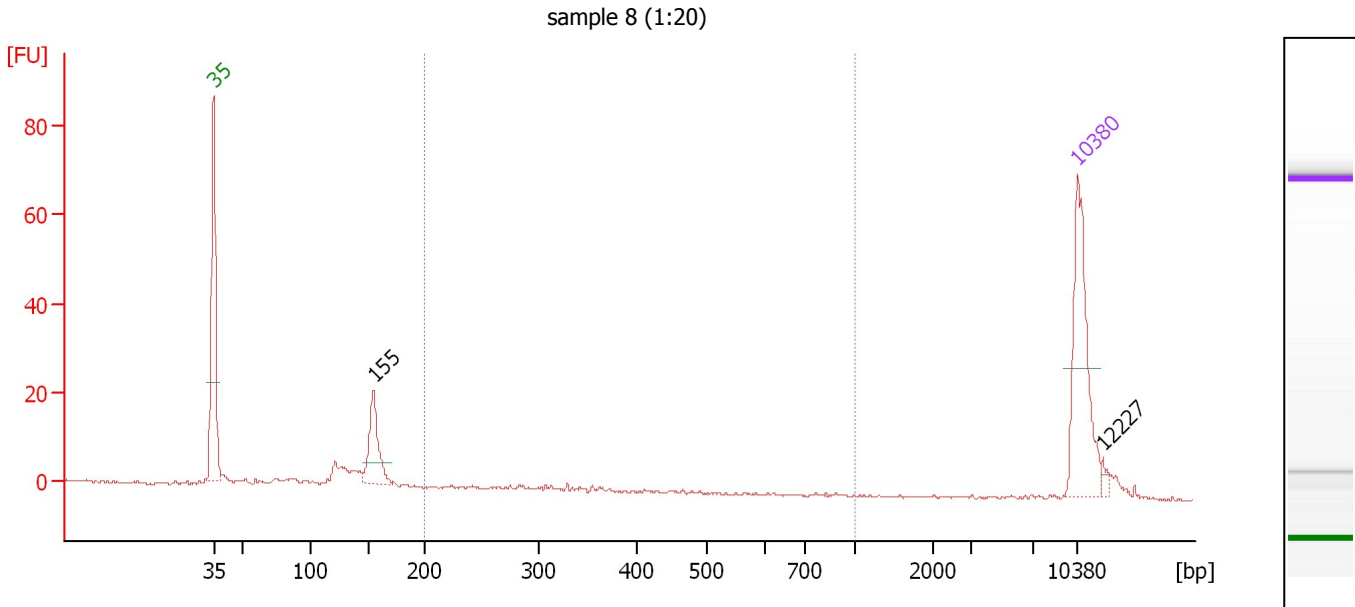
Region table for sample 5 : sample 7 (1:10)

From [bp]	To [bp]	Average Size [bp]	Molarity [pmol/l]	Conc. [pg/μl]	Corr. Area	% of Total	Size distribution in CV [%]	Color
200	1,000	303	30.0	5.78	5.2	2	17.3	Blue

Assay Class: High Sensitivity DNA Assay
 Data Path: C:\...ents and Settings\Bioanalyzer\2014-02-04\2014-02-04_004.xad

Created: 2/4/2014 11:55:02 AM
 Modified: 2/4/2014 12:36:20 PM

Electropherogram Summary Continued ...



Overall Results for sample 6 : sample 8 (1:20)

Number of peaks found: 2 Corr. Area 1: 4.1
 Noise: 0.2

Peak table for sample 6 : sample 8 (1:20)

Peak	Aligned Migration Time [s]	Size [bp]	Conc. [pg/μl]	Molarity [pmol/l]	Observations
1	43.00	35	125.00	5,411.3	Lower Marker
2	55.95	155	58.23	568.9	
3	113.00	10,380	75.00	10.9	Upper Marker
4	114.99	12,227	0.00	0.0	

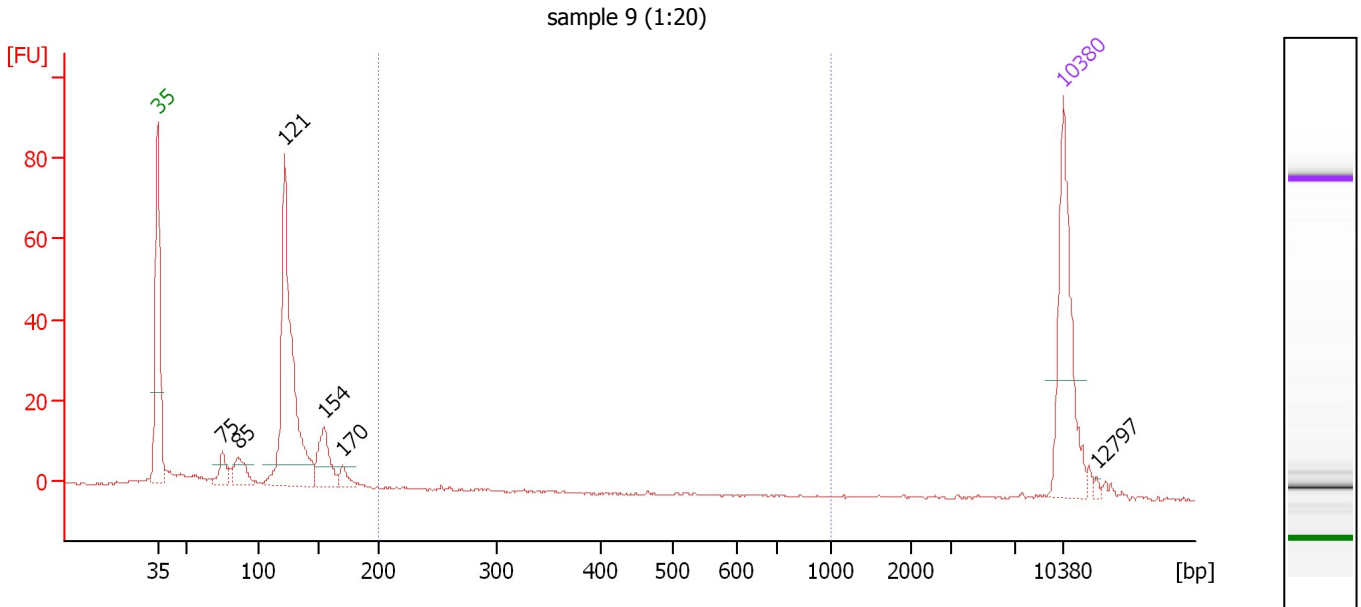
Region table for sample 6 : sample 8 (1:20)

From [bp]	To [bp]	Average Size [bp]	Molarity [pmol/l]	Conc. [pg/μl]	Corr. Area	% of Total	Size distribution in CV [%]	Color
200	1,000	317	29.0	5.74	4.1	5	25.3	Blue

Assay Class: High Sensitivity DNA Assay
 Data Path: C:\...ents and Settings\Bioanalyzer\2014-02-04\2014-02-04_004.xad

Created: 2/4/2014 11:55:02 AM
 Modified: 2/4/2014 12:36:20 PM

Electropherogram Summary Continued ...



Overall Results for sample 7 : sample 9 (1:20)

Number of peaks found: 6 Corr. Area 1: 0.3
 Noise: 0.2

Peak table for sample 7 : sample 9 (1:20)

Peak	Aligned Migration Time [s]	Size [bp]	Conc. [pg/μl]	Molarity [pmol/l]	Observations
1	43.00	35	125.00	5,411.3	Lower Marker
2	48.02	75	18.21	370.0	
3	49.21	85	24.10	428.0	
4	52.82	121	240.65	3,003.6	
5	55.86	154	42.50	417.8	
6	57.32	170	10.16	90.7	
7	113.00	10,380	75.00	10.9	Upper Marker
8	115.60	12,797	0.00	0.0	

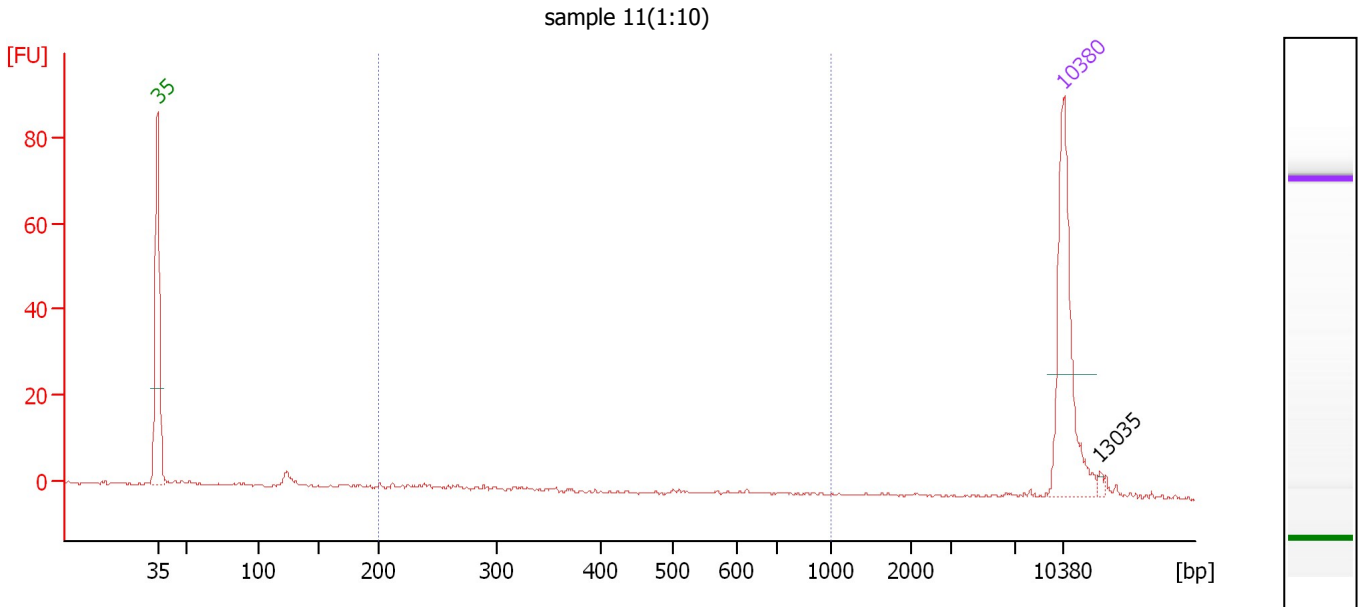
Region table for sample 7 : sample 9 (1:20)

From [bp]	To [bp]	Average Size [bp]	Molarity [pmol/l]	Conc. [pg/μl]	Corr. Area	% of Total	Size distribution in CV [%]	Color
200	1,000	286	2.4	0.43	0.3	0	25.9	Blue

Assay Class: High Sensitivity DNA Assay
 Data Path: C:\...ents and Settings\Bioanalyzer\2014-02-04\2014-02-04_004.xad

Created: 2/4/2014 11:55:02 AM
 Modified: 2/4/2014 12:36:20 PM

Electropherogram Summary Continued ...



Overall Results for sample 8 : sample 11(1:10)

Number of peaks found: 1 Corr. Area 1: 0.2
 Noise: 0.2

Peak table for sample 8 : sample 11(1:10)

Peak	Aligned Migration Time [s]	Size [bp]	Conc. [pg/μl]	Molarity [pmol/l]	Observations
1	43.00	35	125.00	5,411.3	Lower Marker
2	113.00	10,380	75.00	10.9	Upper Marker
3	115.86	13,035	0.00	0.0	

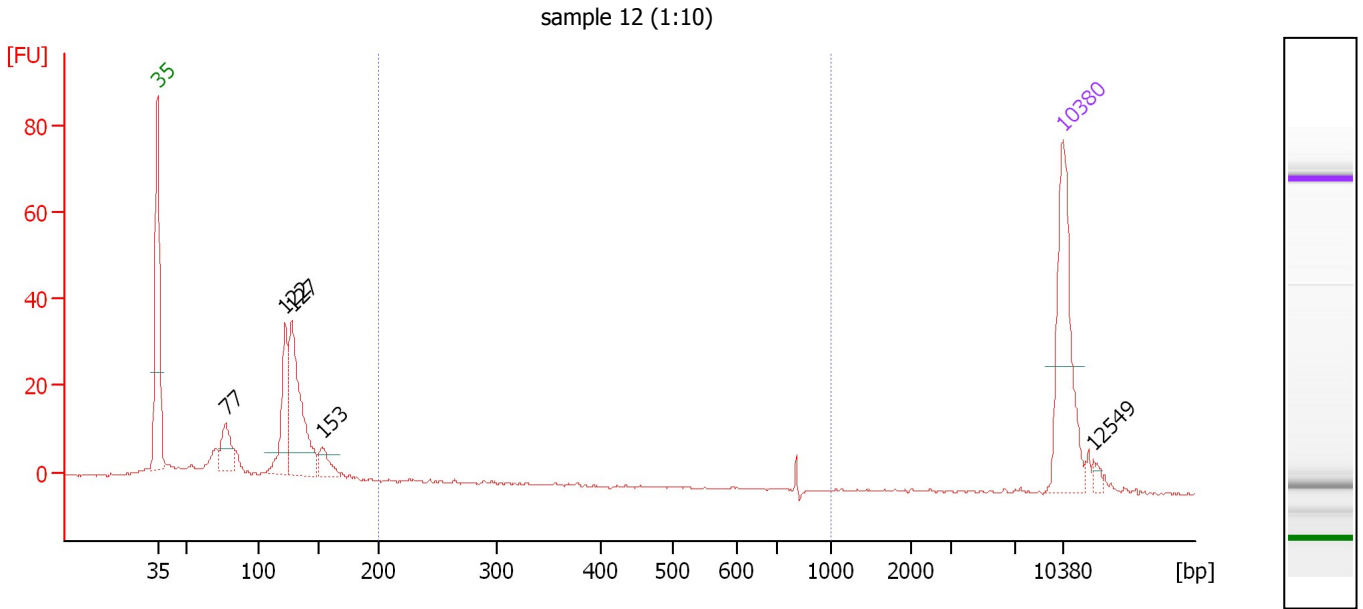
Region table for sample 8 : sample 11(1:10)

From [bp]	To [bp]	Average Size [bp]	Molarity [pmol/l]	Conc. [pg/μl]	Corr. Area	% of Total	Size distribution in CV [%]	Color
200	1,000	314	1.3	0.23	0.2	2	47.9	Blue

Assay Class: High Sensitivity DNA Assay
 Data Path: C:\...ents and Settings\Bioanalyzer\2014-02-04\2014-02-04_004.xad

Created: 2/4/2014 11:55:02 AM
 Modified: 2/4/2014 12:36:20 PM

Electropherogram Summary Continued ...



Overall Results for sample 9 : sample 12 (1:10)

Number of peaks found: 5 Corr. Area 1: 1.4
 Noise: 0.2

Peak table for sample 9 : sample 12 (1:10)

Peak	Aligned Migration Time [s]	Size [bp]	Conc. [pg/μl]	Molarity [pmol/l]	Observations
1	43.00	35	125.00	5,411.3	Lower Marker
2	48.25	77	33.32	658.8	
3	52.87	122	68.48	851.1	
4	53.37	127	121.69	1,449.2	
5	55.74	153	20.05	198.8	
6	113.00	10,380	75.00	10.9	Upper Marker
7	115.33	12,549	0.00	0.0	

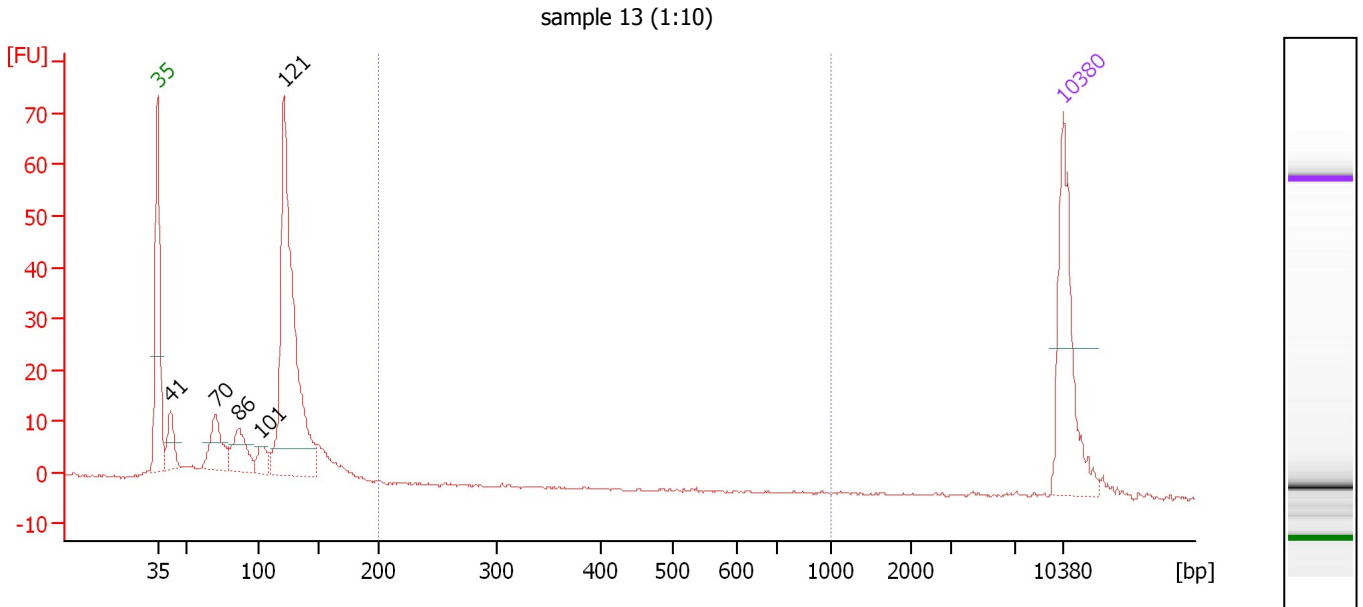
Region table for sample 9 : sample 12 (1:10)

From [bp]	To [bp]	Average Size [bp]	Molarity [pmol/l]	Conc. [pg/μl]	Corr. Area	% of Total	Size distribution in CV [%]	Color
200	1,000	770	3.6	1.53	1.4	1	18.7	Blue

Assay Class: High Sensitivity DNA Assay
 Data Path: C:\...ents and Settings\Bioanalyzer\2014-02-04\2014-02-04_004.xad

Created: 2/4/2014 11:55:02 AM
 Modified: 2/4/2014 12:36:20 PM

Electropherogram Summary Continued ...



Overall Results for sample 10 : sample 13 (1:10)

Number of peaks found: 5 Corr. Area 1: 0.0
 Noise: 0.3

Peak table for sample 10 : sample 13 (1:10)

Peak	Aligned Migration Time [s]	Size [bp]	Conc. [pg/μl]	Molarity [pmol/l]	Observations
1	43.00	35	125.00	5,411.3	Lower Marker
2	44.00	41	31.98	1,167.9	
3	47.48	70	46.60	1,013.5	
4	49.29	86	41.42	729.4	
5	50.96	101	17.75	265.3	
6	52.77	121	305.82	3,834.0	
7	113.00	10,380	75.00	10.9	Upper Marker

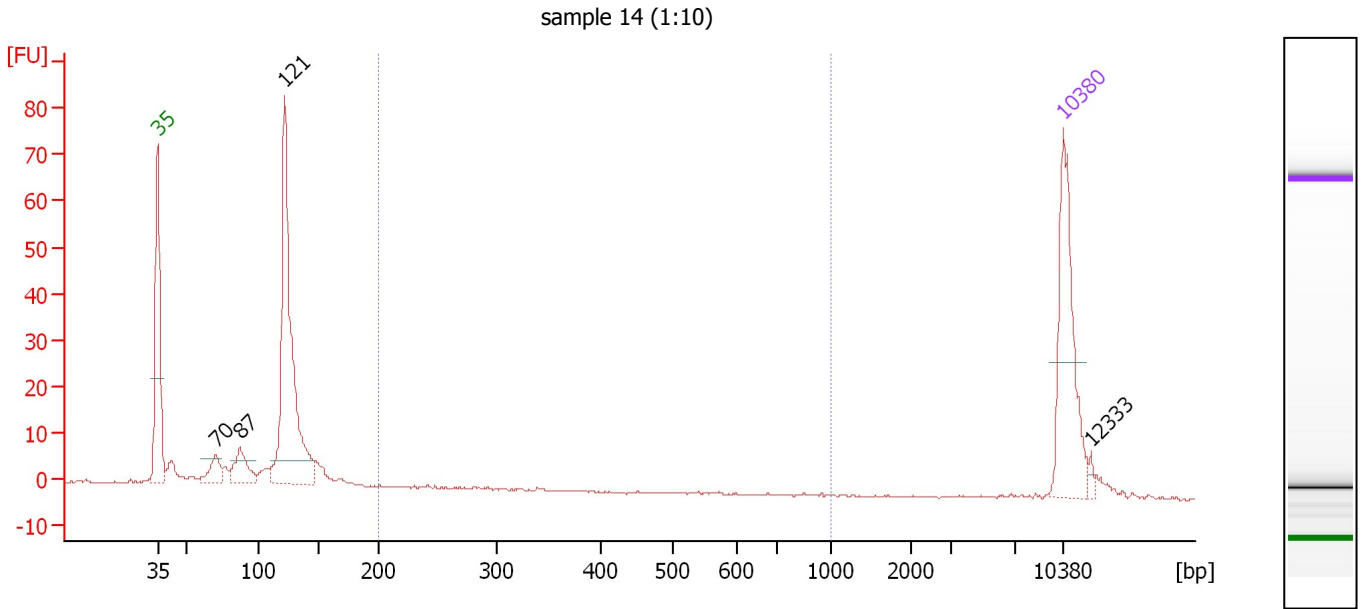
Region table for sample 10 : sample 13 (1:10)

From [bp]	To [bp]	Average Size [bp]	Molarity [pmol/l]	Conc. [pg/μl]	Corr. Area	% of Total	Size distribution in CV [%]	Color
200	1,000	0	0.0	0.00	0.0	0	0.0	Blue

Assay Class: High Sensitivity DNA Assay
 Data Path: C:\...ents and Settings\Bioanalyzer\2014-02-04\2014-02-04_004.xad

Created: 2/4/2014 11:55:02 AM
 Modified: 2/4/2014 12:36:20 PM

Electropherogram Summary Continued ...



Overall Results for sample 11 : sample 14 (1:10)

Number of peaks found: 4 Corr. Area 1: 0.2
 Noise: 0.2

Peak table for sample 11 : sample 14 (1:10)

Peak	Aligned Migration Time [s]	Size [bp]	Conc. [pg/μl]	Molarity [pmol/l]	Observations
1	43.00	35	125.00	5,411.3	Lower Marker
2	47.47	70	21.22	461.7	
3	49.35	87	31.61	553.5	
4	52.82	121	239.13	2,986.3	
5	113.00	10,380	75.00	10.9	Upper Marker
6	115.10	12,333	0.00	0.0	

Region table for sample 11 : sample 14 (1:10)

From [bp]	To [bp]	Average Size [bp]	Molarity [pmol/l]	Conc. [pg/μl]	Corr. Area	% of Total	Size distribution in CV [%]	Color
200	1,000	247	2.1	0.34	0.2	0	16.4	Blue

Assay Class: High Sensitivity DNA Assay
Data Path: C:\...ents and Settings\Bioanalyzer\2014-02-04\2014-02-04_004.xad

Created: 2/4/2014 11:55:02 AM
Modified: 2/4/2014 12:36:20 PM

Gel Image

