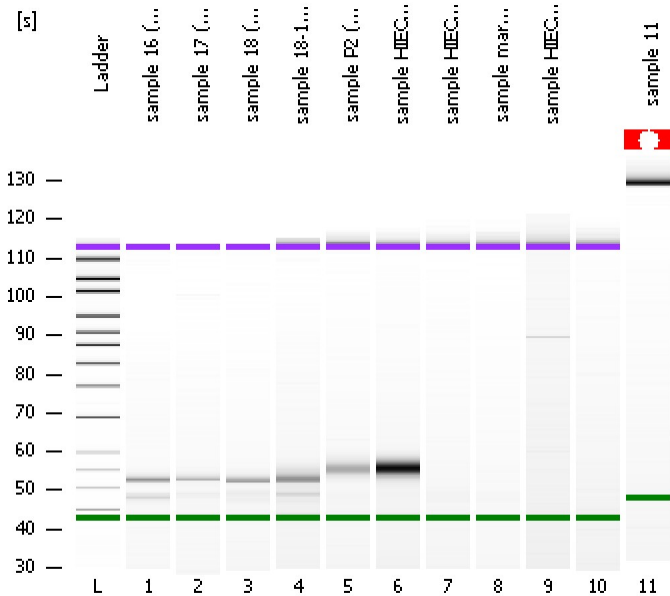


Assay Class: High Sensitivity DNA Assay
Data Path: C:\...ents and Settings\Bioanalyzer\2014-02-04\2014-02-04_005.xad

Created: 2/4/2014 12:55:49 PM
Modified: 2/4/2014 1:48:19 PM

Electrophoresis File Run Summary



Instrument Information:

Instrument Name: DE13701086 Firmware: C.01.069
Serial#: DE13701086 Type: G2938B

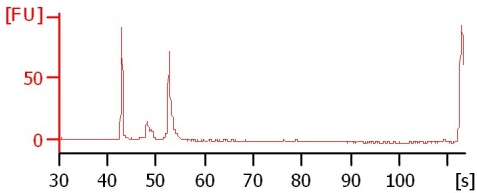
Assay Information:

Assay Origin Path: C:\Program Files\Agilent\2100 bioanalyzer\2100 expert\assays\dsDNA\High Sensitivity DNA.xsy
Assay Class: High Sensitivity DNA Assay
Version: 1.03
Assay Comments: Copyright © 2003-2010 Agilent Technologies

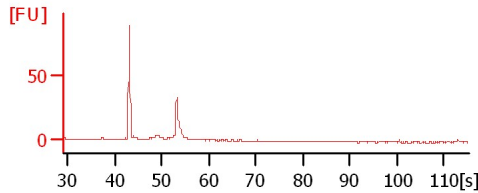
Chip Information:

Chip Lot #:
Reagent Kit Lot #:
Chip Comments:

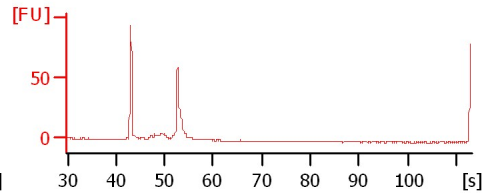
sample 16 (1:40)



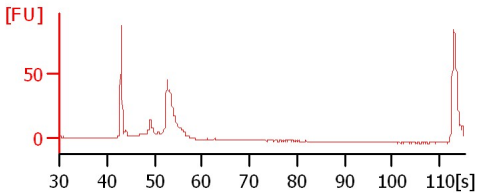
sample 17 (1:20)



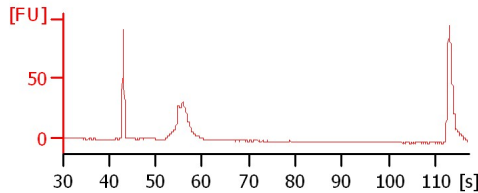
sample 18 (1:10)



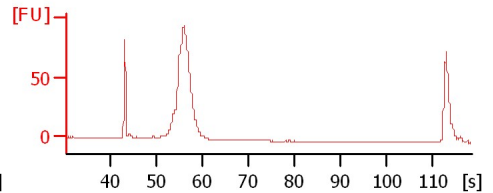
sample 18-1(1:10)



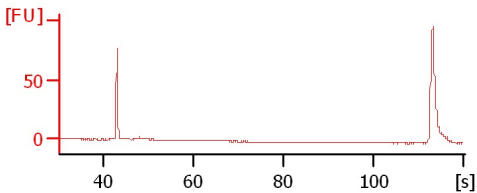
sample P2 (1:20)



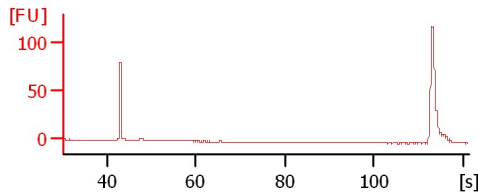
sample HIEC #2



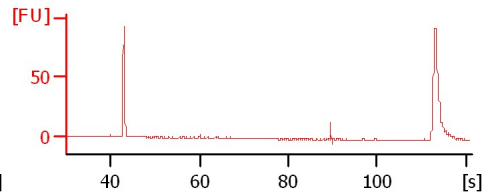
sample HIEC#4



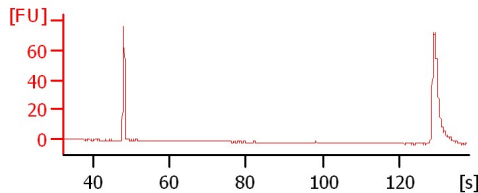
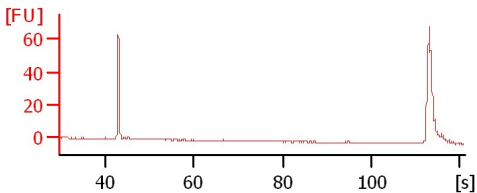
sample marker



sample HIEC#2(1:20)



sample 11



Assay Class: High Sensitivity DNA Assay
 Data Path: C:\...ents and Settings\Bioanalyzer\2014-02-04\2014-02-04_005.xad

Created: 2/4/2014 12:55:49 PM
 Modified: 2/4/2014 1:48:19 PM

Electrophoresis File Run Summary (Chip Summary)

Sample Name	Sample Comment	Rest. Digest	Status	Observation	Result Label	Result Color
sample 16 (1:40)		<input type="checkbox"/>	✓			
sample 17 (1:20)		<input type="checkbox"/>	✓			
sample 18 (1:10)		<input type="checkbox"/>	✓			
sample 18-1(1:10)		<input type="checkbox"/>	✓			
sample P2 (1:20)		<input type="checkbox"/>	✓			
sample HIEC #2		<input type="checkbox"/>	✓			
sample HIEC#4		<input type="checkbox"/>	✓			
sample marker		<input type="checkbox"/>	✓			
sample HIEC#2(1:20)		<input type="checkbox"/>	✓			
sample 11		<input type="checkbox"/>	✓			
Ladder		<input type="checkbox"/>	✓			

Chip Lot #

Reagent Kit Lot #

Chip Comments :

Assay Class: High Sensitivity DNA Assay
Data Path: C:\...ents and Settings\Bioanalyzer\2014-02-04\2014-02-04_005.xad

Created: 2/4/2014 12:55:49 PM
Modified: 2/4/2014 1:48:19 PM

Electrophoresis Assay Details

General Analysis Settings

Number of Available Sample and Ladder Wells (Max.) : 12
Minimum Visible Range [s] : 32
Maximum Visible Range [s] : 138
Start Analysis Time Range [s] : 33
End Analysis Time Range [s] : 137.5
Ladder Concentration [pg/μl] : 1950
Uses Standard Area for Ladder Fragments
Lower Marker Concentration [pg/μl] : 125
Upper Marker Concentration [pg/μl] : 75
Used Upper Marker for Quantitation
Standard Curve Fit is Point to Point
Show Data Aligned to Lower and Upper Marker

Integrator Settings

Integration Start Time [s] : 33.05
Integration End Time [s] : 137
Slope Threshold : 0.8
Height Threshold [FU] : 5
Area Threshold : 0.1
Width Threshold [s] : 0.6
Baseline Plateau [s] : 0.5

Filter Settings

Filter Width [s] : 0.5
Polynomial Order : 4

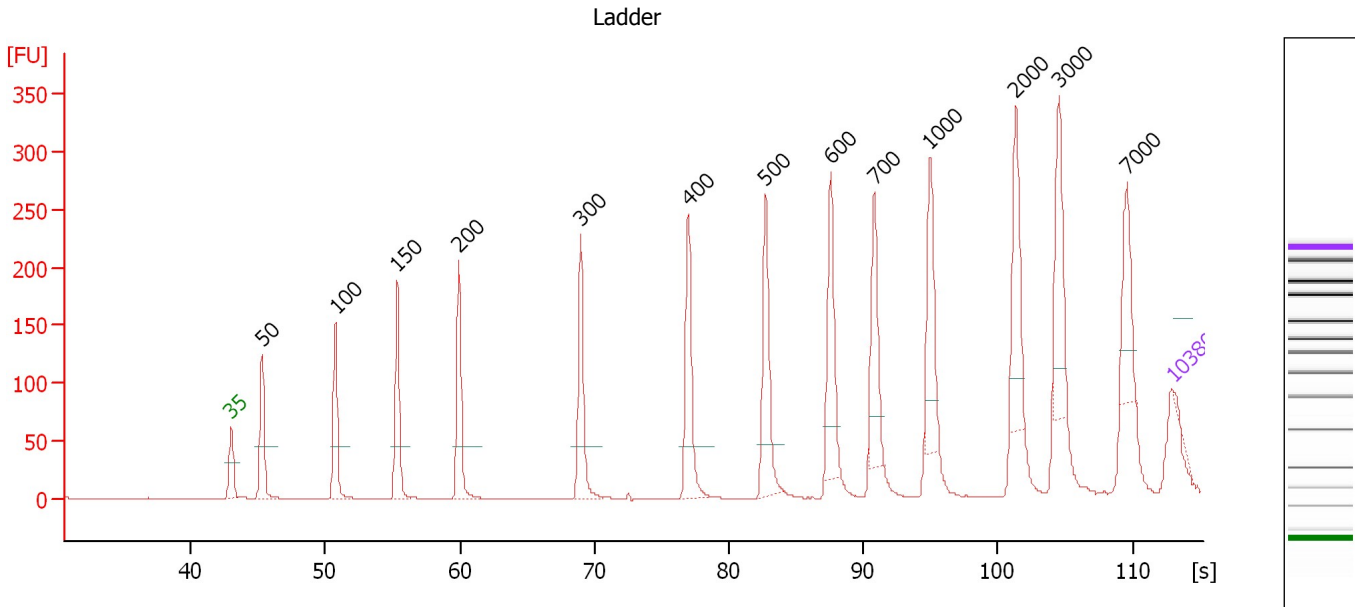
Ladder

Ladder Peak	Size	Area
1	35	160
2	50	210
3	100	208
4	150	221
5	200	242
6	300	270
7	400	305
8	500	306
9	600	336
10	700	321
11	1000	366
12	2000	413
13	3000	411
14	7000	400
15	10380	214

Assay Class: High Sensitivity DNA Assay
 Data Path: C:\...ents and Settings\Bioanalyzer\2014-02-04\2014-02-04_005.xad

Created: 2/4/2014 12:55:49 PM
 Modified: 2/4/2014 1:48:19 PM

Electropherogram Summary



Overall Results for Ladder

Noise: 0.2

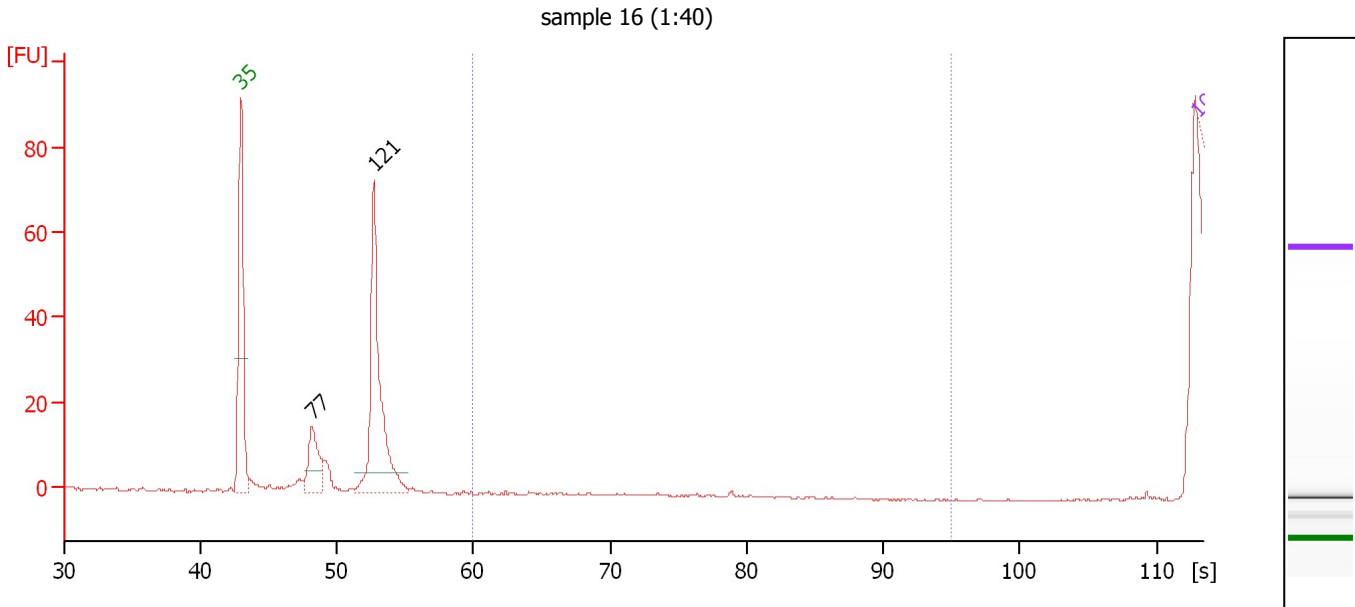
Peak table for Ladder

Peak	Aligned Migration Time [s]	Size [bp]	Conc. [pg/μl]	Molarity [pmol/l]	Observations
1	43.00	35	125.00	5,411.3	Lower Marker
2	45.28	50	150.00	4,545.5	Ladder Peak
3	50.75	100	150.00	2,272.7	Ladder Peak
4	55.34	150	150.00	1,515.2	Ladder Peak
5	59.93	200	150.00	1,136.4	Ladder Peak
6	69.00	300	150.00	757.6	Ladder Peak
7	76.98	400	150.00	568.2	Ladder Peak
8	82.73	500	150.00	454.5	Ladder Peak
9	87.56	600	150.00	378.8	Ladder Peak
10	90.80	700	150.00	324.7	Ladder Peak
11	94.95	1,000	150.00	227.3	Ladder Peak
12	101.34	2,000	150.00	113.6	Ladder Peak
13	104.53	3,000	150.00	75.8	Ladder Peak
14	109.65	7,000	150.00	32.5	Ladder Peak
15	113.00	10,380	75.00	10.9	Upper Marker

Assay Class: High Sensitivity DNA Assay
 Data Path: C:\...ents and Settings\Bioanalyzer\2014-02-04\2014-02-04_005.xad

Created: 2/4/2014 12:55:49 PM
 Modified: 2/4/2014 1:48:19 PM

Electropherogram Summary Continued ...



Overall Results for sample 1 : sample 16 (1:40)

Number of peaks found: 2 Corr. Area 1: 0.0
 Noise: 0.2

Peak table for sample 1 : sample 16 (1:40)

Peak	Aligned Migration Time [s]	Size [bp]	Conc. [pg/μl]	Molarity [pmol/l]	Observations
1	43.00	35	125.00	5,411.3	Lower Marker
2	48.19	77	0.00	0.0	
3	52.71	121	0.00	0.0	
4	113.00	10,380	75.00	10.9	Upper Marker

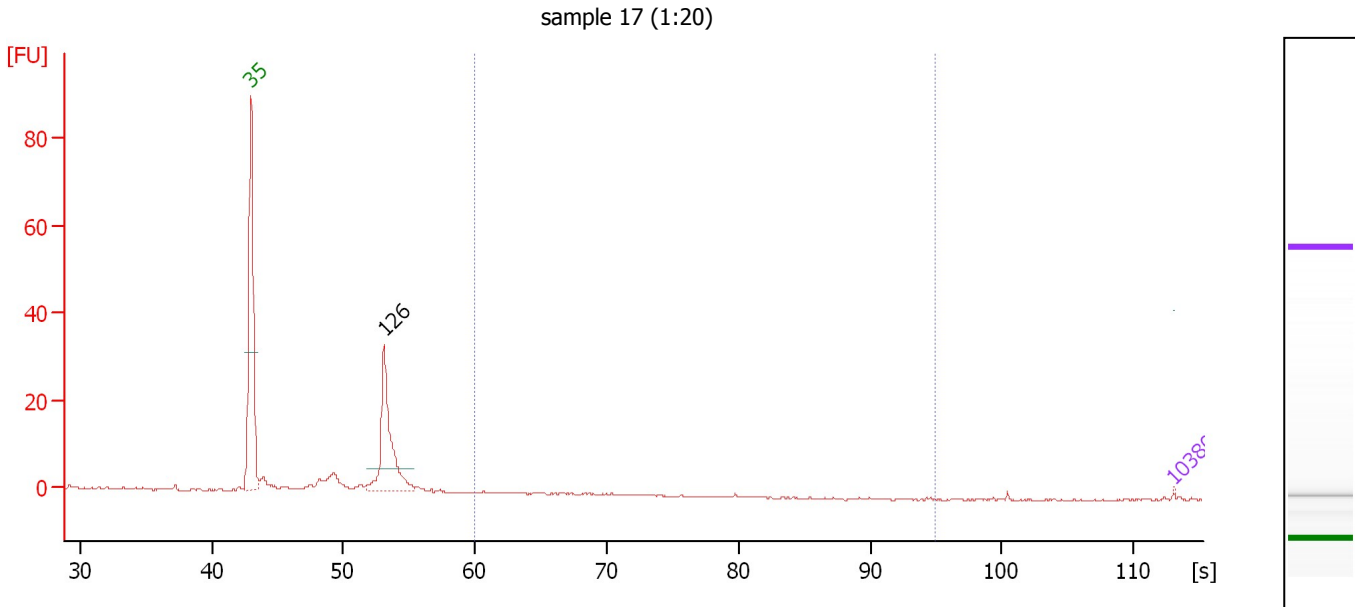
Region table for sample 1 : sample 16 (1:40)

From [bp]	To [bp]	Average Size [bp]	Molarity [pmol/l]	Conc. [pg/μl]	Corr. Area	% of Total	Size distribution in CV [%]	Color
200	1,000	0	0.0	0.00	0.0	0	0.0	Blue

Assay Class: High Sensitivity DNA Assay
 Data Path: C:\...ents and Settings\Bioanalyzer\2014-02-04\2014-02-04_005.xad

Created: 2/4/2014 12:55:49 PM
 Modified: 2/4/2014 1:48:19 PM

Electropherogram Summary Continued ...



Overall Results for sample 2 : sample 17 (1:20)

Number of peaks found: 1 Corr. Area 1: 0.0
 Noise: 0.2

Peak table for sample 2 : sample 17 (1:20)

Peak	Aligned Migration Time [s]	Size [bp]	Conc. [pg/μl]	Molarity [pmol/l]	Observations
1	43.00	35	125.00	5,411.3	Lower Marker
2	53.11	126	0.00	0.0	
3	113.00	10,380	75.00	10.9	Upper Marker

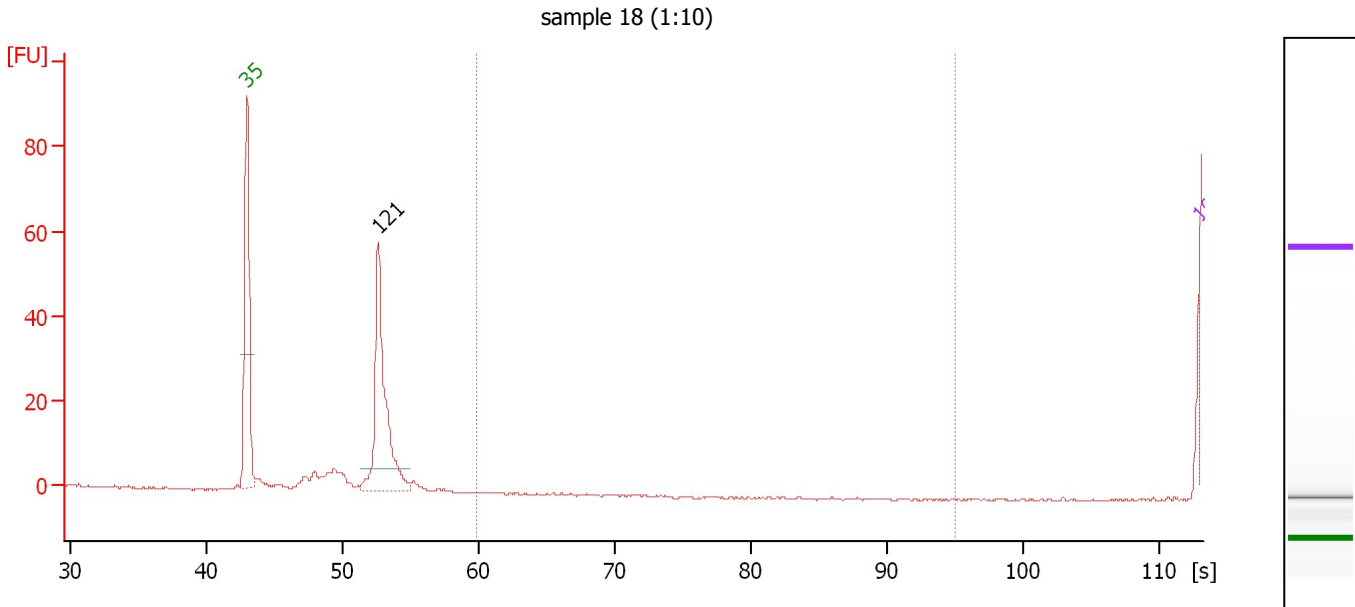
Region table for sample 2 : sample 17 (1:20)

From [bp]	To [bp]	Average Size [bp]	Molarity [pmol/l]	Conc. [pg/μl]	Corr. Area	% of Total	Size distribution in CV [%]	Color
200	1,000	448	0.0	0.00	0.0	0	0.0	Blue

Assay Class: High Sensitivity DNA Assay
 Data Path: C:\...ents and Settings\Bioanalyzer\2014-02-04\2014-02-04_005.xad

Created: 2/4/2014 12:55:49 PM
 Modified: 2/4/2014 1:48:19 PM

Electropherogram Summary Continued ...



Overall Results for sample 3 : sample 18 (1:10)

Number of peaks found: 1 Corr. Area 1: 0.0
 Noise: 0.2

Peak table for sample 3 : sample 18 (1:10)

Peak	Aligned Migration Time [s]	Size [bp]	Conc. [pg/μl]	Molarity [pmol/l]	Observations
1	43.00	35	125.00	5,411.3	Lower Marker
2	52.66	121	2,576.97	32,307.6	
3	113.00	10,380	75.00	10.9	Upper Marker

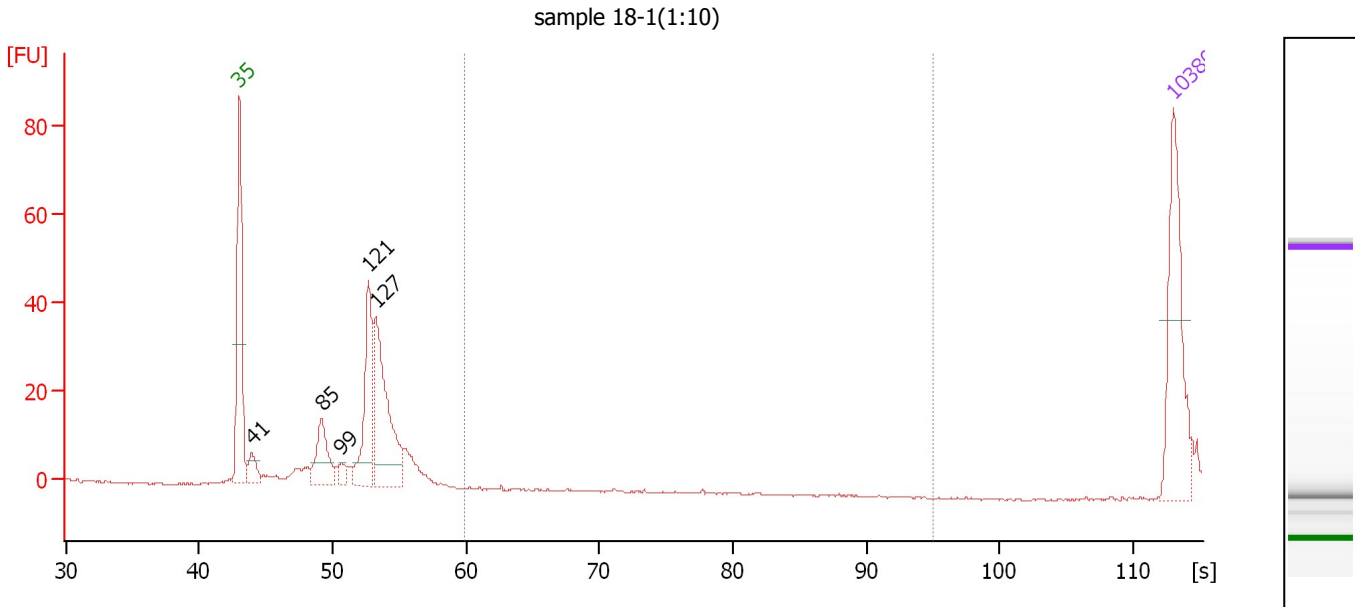
Region table for sample 3 : sample 18 (1:10)

From [bp]	To [bp]	Average Size [bp]	Molarity [pmol/l]	Conc. [pg/μl]	Corr. Area	% of Total	Size distribution in CV [%]	Color
200	1,000	0	0.0	0.00	0.0	0	0.0	Blue

Assay Class: High Sensitivity DNA Assay
 Data Path: C:\...ents and Settings\Bioanalyzer\2014-02-04\2014-02-04_005.xad

Created: 2/4/2014 12:55:49 PM
 Modified: 2/4/2014 1:48:19 PM

Electropherogram Summary Continued ...



Overall Results for sample 4 : sample 18-1(1:10)

Number of peaks found: 5 Corr. Area 1: 0.0
 Noise: 0.2

Peak table for sample 4 : sample 18-1(1:10)

Peak	Aligned Migration Time [s]	Size [bp]	Conc. [pg/μl]	Molarity [pmol/l]	Observations
1	43.00	35	125.00	5,411.3	Lower Marker
2	43.93	41	22.69	836.5	
3	49.16	85	56.04	993.2	
4	50.65	99	10.42	159.3	
5	52.66	121	108.33	1,358.3	
6	53.22	127	151.56	1,808.6	
7	113.00	10,380	75.00	10.9	Upper Marker

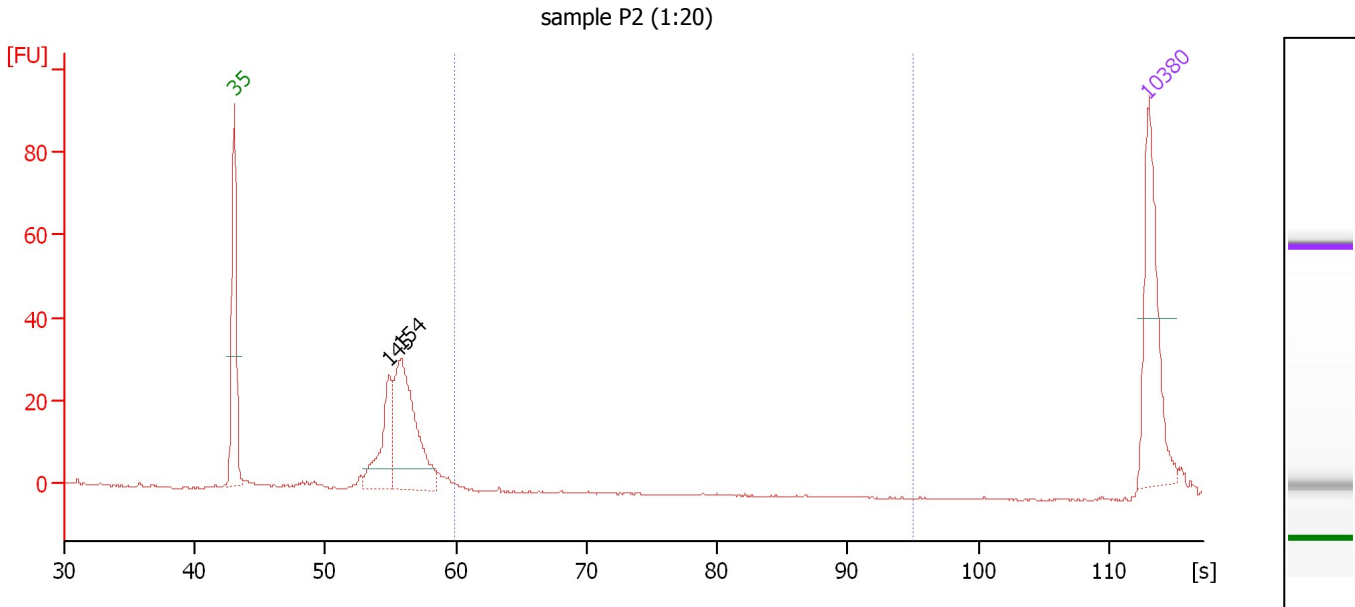
Region table for sample 4 : sample 18-1(1:10)

From [bp]	To [bp]	Average Size [bp]	Molarity [pmol/l]	Conc. [pg/μl]	Corr. Area	% of Total	Size distribution in CV [%]	Color
200	1,000	0	0.0	0.00	0.0	0	0.0	Blue

Assay Class: High Sensitivity DNA Assay
 Data Path: C:\...ents and Settings\Bioanalyzer\2014-02-04\2014-02-04_005.xad

Created: 2/4/2014 12:55:49 PM
 Modified: 2/4/2014 1:48:19 PM

Electropherogram Summary Continued ...



Overall Results for sample 5 : sample P2 (1:20)

Number of peaks found: 2 Corr. Area 1: 0.0
 Noise: 0.2

Peak table for sample 5 : sample P2 (1:20)

Peak	Aligned Migration Time [s]	Size [bp]	Conc. [pg/μl]	Molarity [pmol/l]	Observations
1	43.00	35	125.00	5,411.3	Lower Marker
2	54.84	145	77.31	810.0	
3	55.75	154	166.27	1,630.8	
4	113.00	10,380	75.00	10.9	Upper Marker

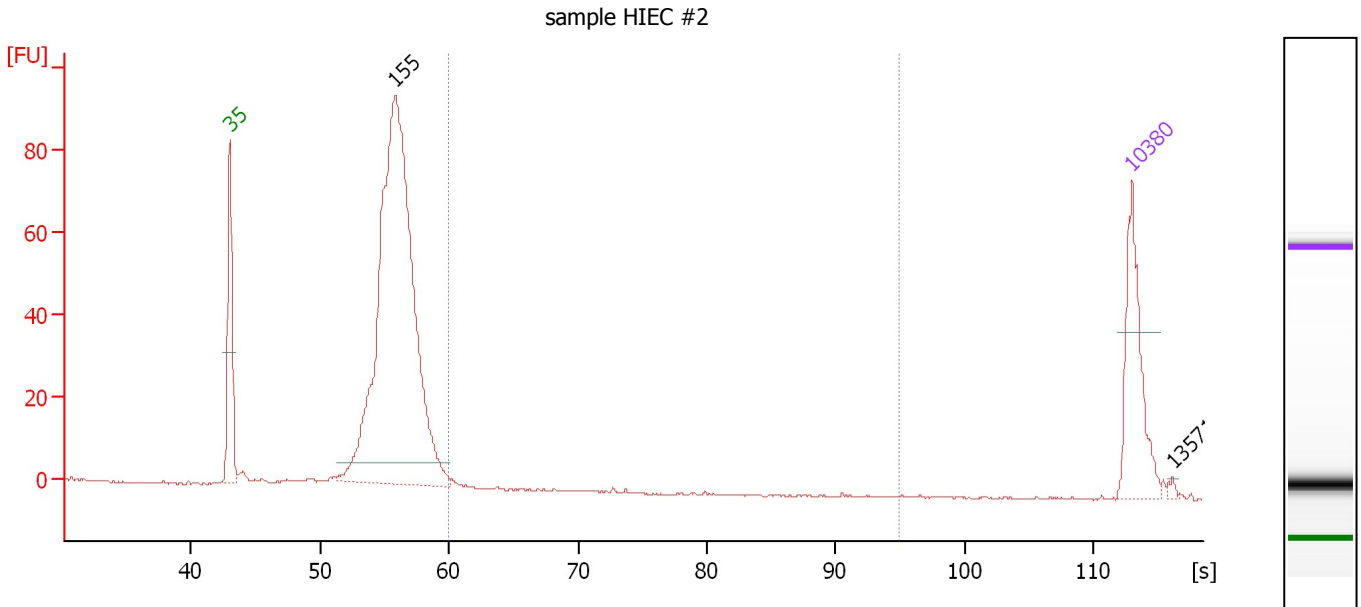
Region table for sample 5 : sample P2 (1:20)

From [bp]	To [bp]	Average Size [bp]	Molarity [pmol/l]	Conc. [pg/μl]	Corr. Area	% of Total	Size distribution in CV [%]	Color
200	1,000	200	0.2	0.02	0.0	0	0.1	Blue

Assay Class: High Sensitivity DNA Assay
 Data Path: C:\...ents and Settings\Bioanalyzer\2014-02-04\2014-02-04_005.xad

Created: 2/4/2014 12:55:49 PM
 Modified: 2/4/2014 1:48:19 PM

Electropherogram Summary Continued ...



Overall Results for sample 6 : sample HIEC #2

Number of peaks found: 2 Corr. Area 1: 2.9
 Noise: 0.2

Peak table for sample 6 : sample HIEC #2

Peak	Aligned Migration Time [s]	Size [bp]	Conc. [pg/μl]	Molarity [pmol/l]	Observations
1	43.00	35	125.00	5,411.3	Lower Marker
2	55.83	155	882.65	8,606.7	
3	113.00	10,380	75.00	10.9	Upper Marker
4	116.17	13,571	0.00	0.0	

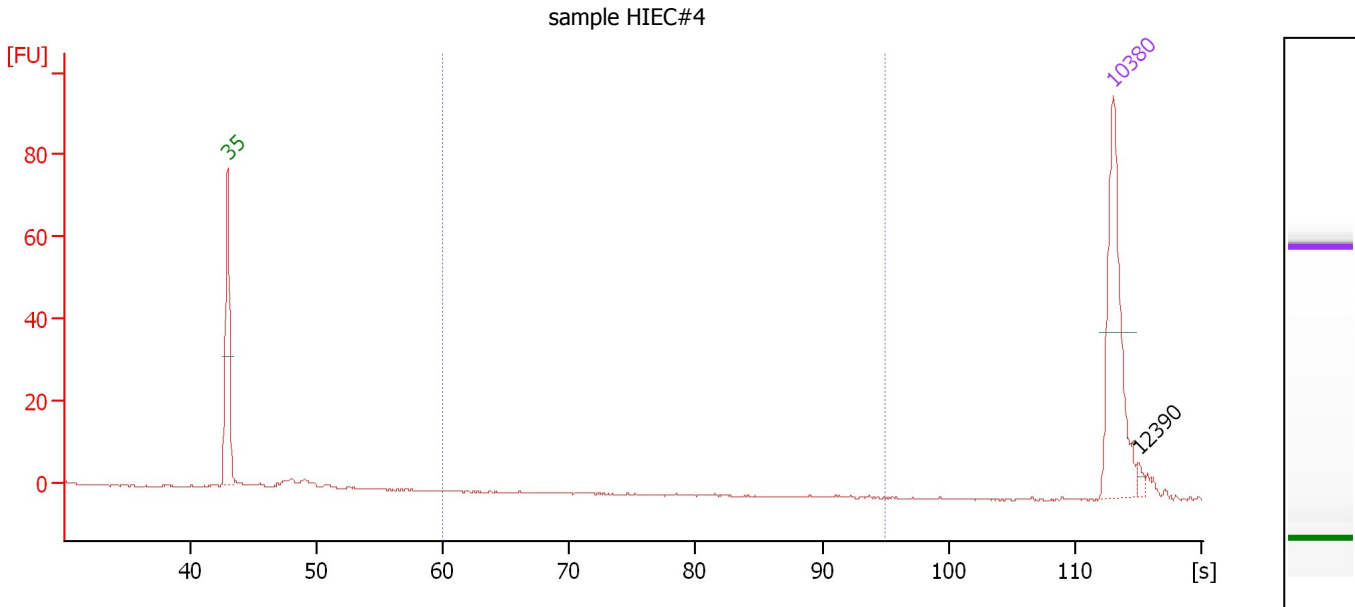
Region table for sample 6 : sample HIEC #2

From [bp]	To [bp]	Average Size [bp]	Molarity [pmol/l]	Conc. [pg/μl]	Corr. Area	% of Total	Size distribution in CV [%]	Color
200	1,000	211	31.1	4.25	2.9	0	16.6	Blue

Assay Class: High Sensitivity DNA Assay
 Data Path: C:\...ents and Settings\Bioanalyzer\2014-02-04\2014-02-04_005.xad

Created: 2/4/2014 12:55:49 PM
 Modified: 2/4/2014 1:48:19 PM

Electropherogram Summary Continued ...



Overall Results for sample 7 : sample HIEC#4

Number of peaks found: 1 Corr. Area 1: 0.0
 Noise: 0.2

Peak table for sample 7 : sample HIEC#4

Peak	Aligned Migration Time [s]	Size [bp]	Conc. [pg/μl]	Molarity [pmol/l]	Observations
1	43.00	35	125.00	5,411.3	Lower Marker
2	113.00	10,380	75.00	10.9	Upper Marker
3	115.00	12,390	0.00	0.0	

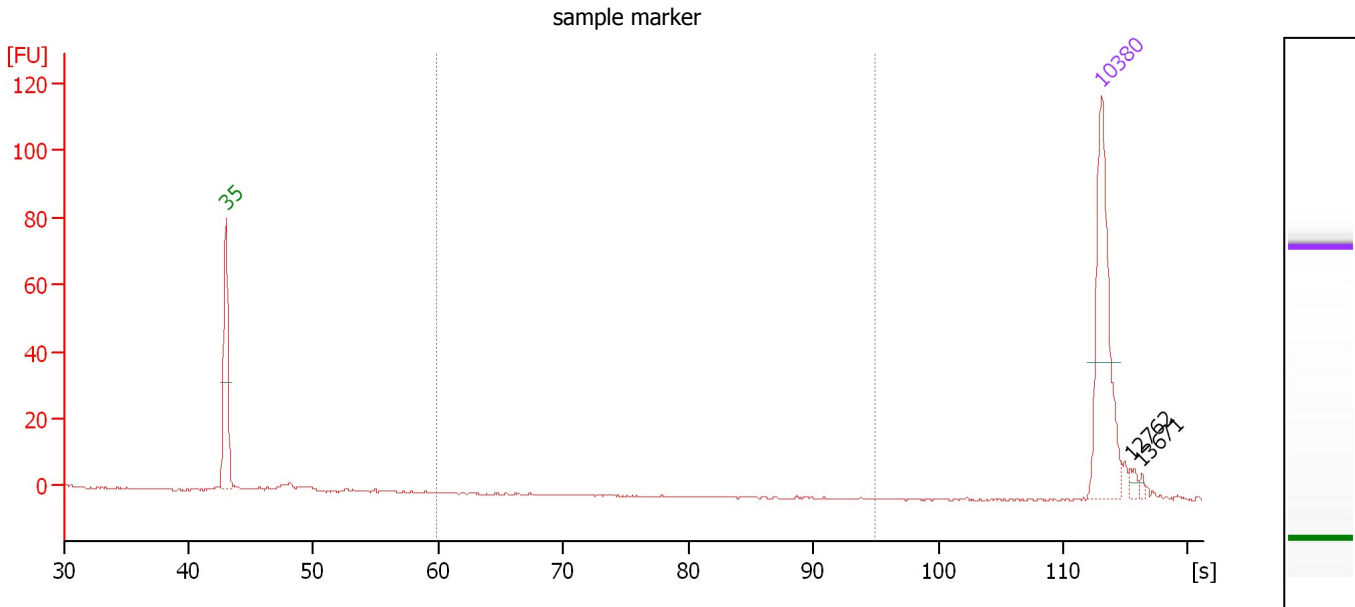
Region table for sample 7 : sample HIEC#4

From [bp]	To [bp]	Average Size [bp]	Molarity [pmol/l]	Conc. [pg/μl]	Corr. Area	% of Total	Size distribution in CV [%]	Color
200	1,000	0	0.0	0.00	0.0	0	0.0	Blue

Assay Class: High Sensitivity DNA Assay
 Data Path: C:\...ents and Settings\Bioanalyzer\2014-02-04\2014-02-04_005.xad

Created: 2/4/2014 12:55:49 PM
 Modified: 2/4/2014 1:48:19 PM

Electropherogram Summary Continued ...



Overall Results for sample 8 : sample marker

Number of peaks found: 2 Corr. Area 1: 0.0
 Noise: 0.2

Peak table for sample 8 : sample marker

Peak	Aligned Migration Time [s]	Size [bp]	Conc. [pg/μl]	Molarity [pmol/l]	Observations
1	43.00	35	125.00	5,411.3	Lower Marker
2	113.00	10,380	75.00	10.9	Upper Marker
3	115.36	12,762	0.00	0.0	
4	116.27	13,671	0.00	0.0	

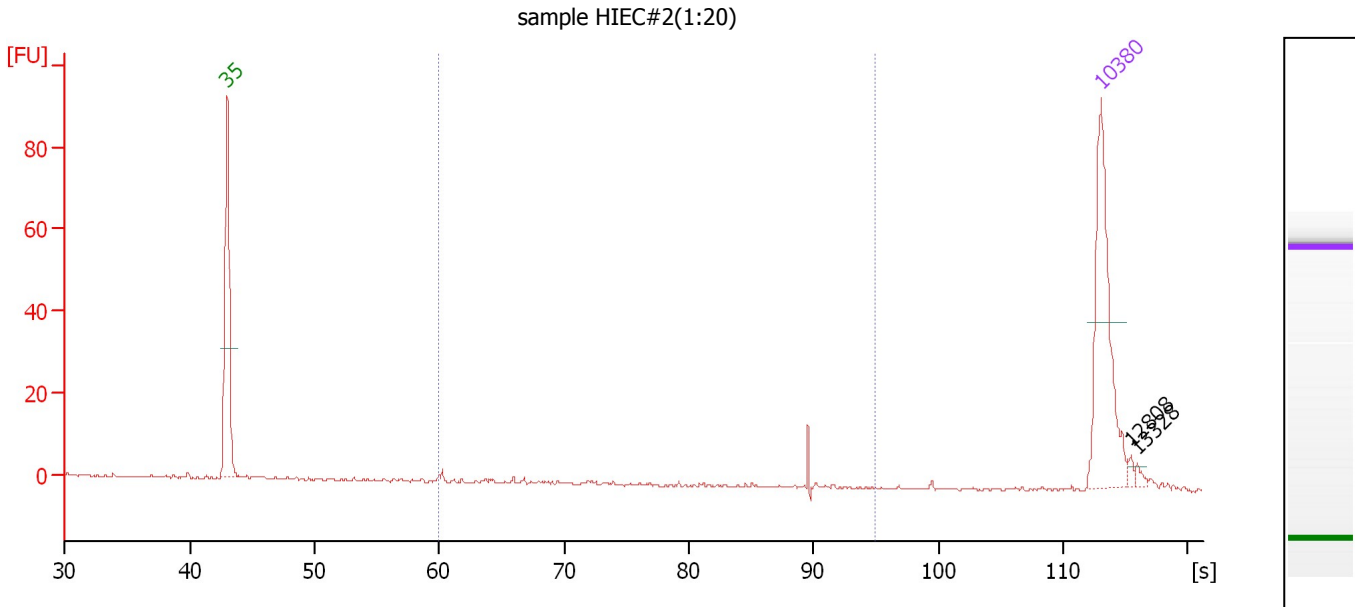
Region table for sample 8 : sample marker

From [bp]	To [bp]	Average Size [bp]	Molarity [pmol/l]	Conc. [pg/μl]	Corr. Area	% of Total	Size distribution in CV [%]	Color
200	1,000	0	0.0	0.00	0.0	0	0.0	Blue

Assay Class: High Sensitivity DNA Assay
 Data Path: C:\...ents and Settings\Bioanalyzer\2014-02-04\2014-02-04_005.xad

Created: 2/4/2014 12:55:49 PM
 Modified: 2/4/2014 1:48:19 PM

Electropherogram Summary Continued ...



Overall Results for sample 9 : sample HIEC#2(1:20)

Number of peaks found: 2 Corr. Area 1: 6.0
 Noise: 0.3

Peak table for sample 9 : sample HIEC#2(1:20)

Peak	Aligned Migration Time [s]	Size [bp]	Conc. [pg/μl]	Molarity [pmol/l]	Observations
1	43.00	35	125.00	5,411.3	Lower Marker
2	113.00	10,380	75.00	10.9	Upper Marker
3	115.41	12,808	0.00	0.0	
4	115.93	13,328	0.00	0.0	

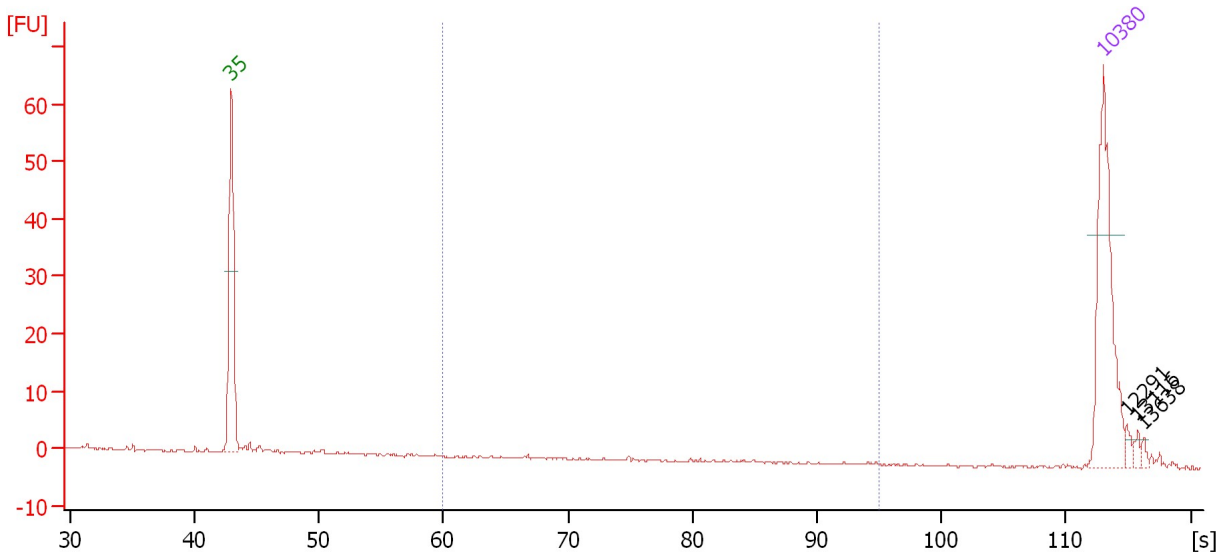
Region table for sample 9 : sample HIEC#2(1:20)

From [bp]	To [bp]	Average Size [bp]	Molarity [pmol/l]	Conc. [pg/μl]	Corr. Area	% of Total	Size distribution in CV [%]	Color
200	1,000	505	26.5	6.07	6.0	28	39.9	Blue

Assay Class: High Sensitivity DNA Assay
 Data Path: C:\...ents and Settings\Bioanalyzer\2014-02-04\2014-02-04_005.xad

Created: 2/4/2014 12:55:49 PM
 Modified: 2/4/2014 1:48:19 PM

Electropherogram Summary Continued ...



Overall Results for sample 10 :

Number of peaks found: 3 Corr. Area 1: 0.3
 Noise: 0.2

Peak table for sample 10 :

Peak	Aligned Migration Time [s]	Size [bp]	Conc. [pg/μl]	Molarity [pmol/l]	Observations
1	43.00	35	125.00	5,411.3	Lower Marker
2	113.00	10,380	75.00	10.9	Upper Marker
3	114.90	12,291	0.00	0.0	
4	115.72	13,116	0.00	0.0	
5	116.23	13,638	0.00	0.0	

Region table for sample 10 :

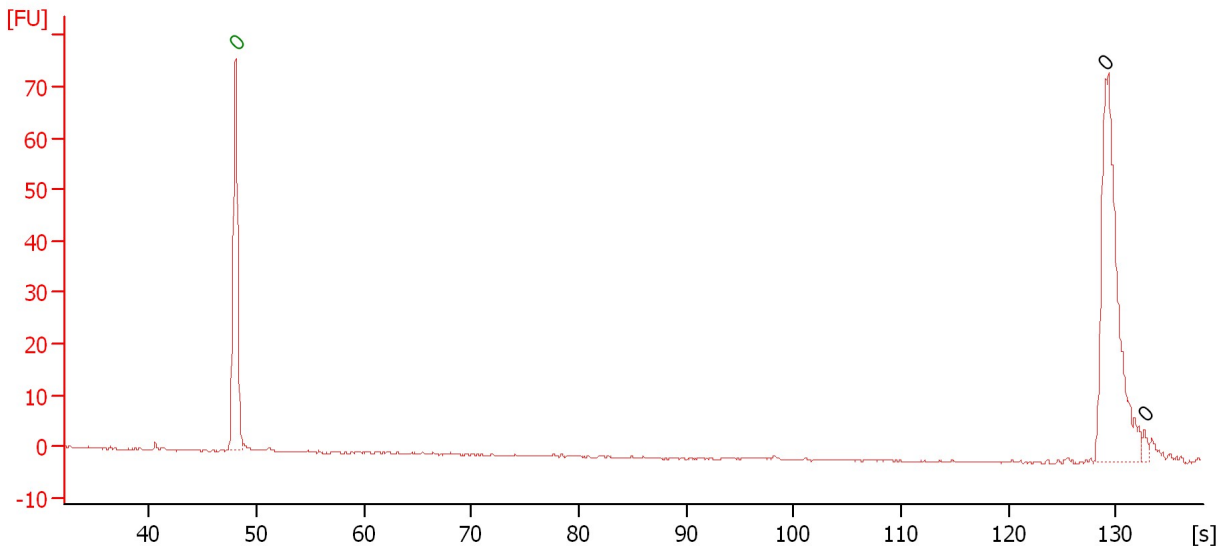
From [bp]	To [bp]	Average Size [bp]	Molarity [pmol/l]	Conc. [pg/μl]	Corr. Area	% of Total	Size distribution in CV [%]	Color
200	1,000	493	1.5	0.37	0.3	1	46.4	Blue

Assay Class: High Sensitivity DNA Assay
Data Path: C:\...ents and Settings\Bioanalyzer\2014-02-04\2014-02-04_005.xad

Created: 2/4/2014 12:55:49 PM
Modified: 2/4/2014 1:48:19 PM

Electropherogram Summary Continued ...

sample 11



Overall Results for sample 11 : sample 11

Number of peaks found: 2 Noise: 0.2

Peak table for sample 11 : sample 11

Peak	Aligned Migration Time [s]	Size [bp]	Conc. [pg/μl]	Molarity [pmol/l]	Observations
1	48.05	0	0.00	0.0	Lower Marker
2	129.10	0	0.00	0.0	
3	132.65	0	0.00	0.0	

Assay Class: High Sensitivity DNA Assay
Data Path: C:\...ents and Settings\Bioanalyzer\2014-02-04\2014-02-04_005.xad

Created: 2/4/2014 12:55:49 PM
Modified: 2/4/2014 1:48:19 PM

Gel Image

