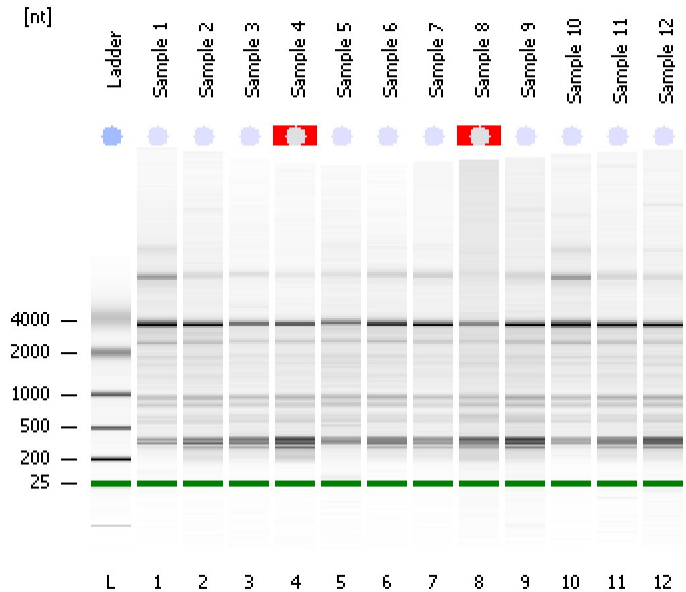


Assay Class: Eukaryote Total RNA Nano
Data Path: C:\...ents and Settings\Bioanalyzer\2014-02-04\2014-02-04_007.xad

Created: 2/4/2014 3:32:42 PM
Modified: 2/4/2014 3:56:31 PM

Electrophoresis File Run Summary



Instrument Information:

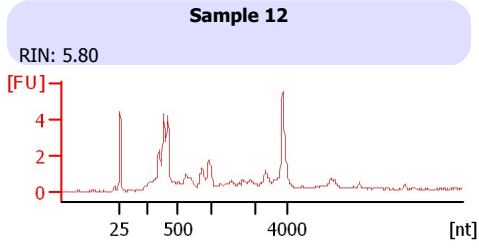
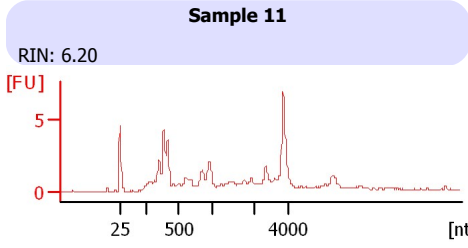
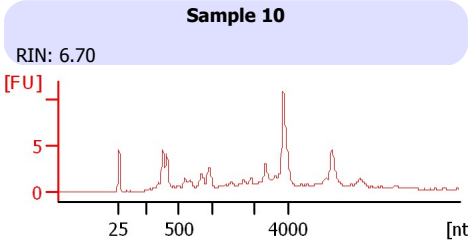
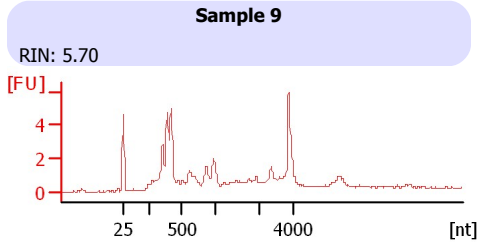
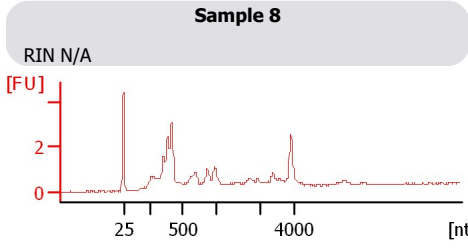
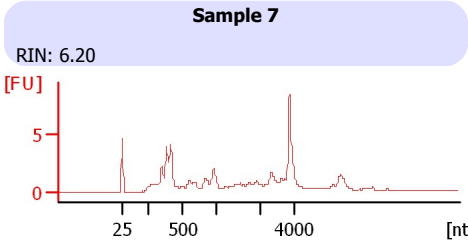
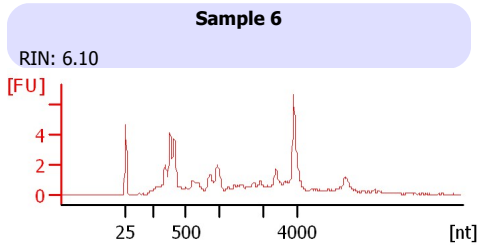
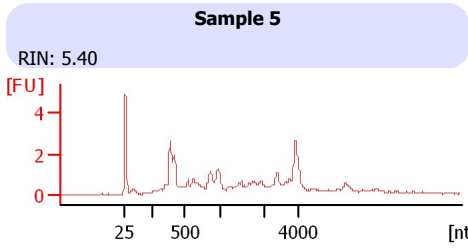
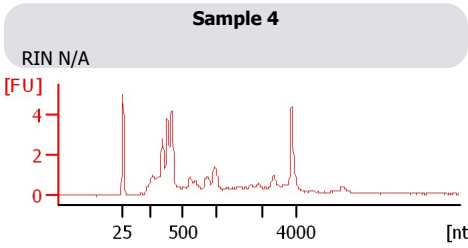
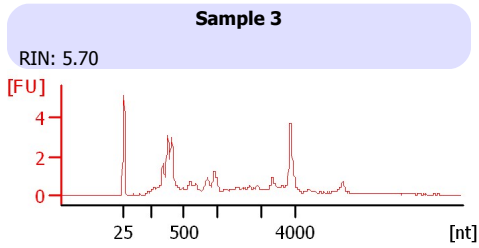
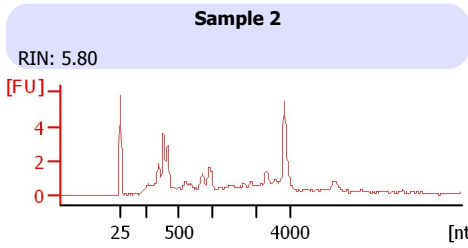
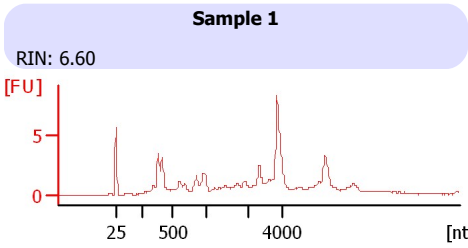
Instrument Name: DE13701086 Firmware: C.01.069
Serial#: DE13701086 Type: G2938B

Assay Information:

Assay Origin Path: C:\Program Files\Agilent\2100 bioanalyzer\2100 expert\assays\RNA\Eukaryote Total RNA Nano Series II.xsy
Assay Class: Eukaryote Total RNA Nano
Version: 2.6
Assay Comments: Total RNA Analysis ng sensitivity (Eukaryote)
© Copyright 2003 - 2009 Agilent Technologies, Inc.

Chip Information:

Chip Lot #:
Reagent Kit Lot #:
Chip Comments:



Assay Class: Eukaryote Total RNA Nano
 Data Path: C:\...ents and Settings\Bioanalyzer\2014-02-04\2014-02-04_007.xad

Created: 2/4/2014 3:32:42 PM
 Modified: 2/4/2014 3:56:31 PM

Electrophoresis File Run Summary (Chip Summary)

Sample Name	Sample Comment	Status	Result Label	Result Color
Sample 1		✓	RIN: 6.60	
Sample 2		✓	RIN: 5.80	
Sample 3		✓	RIN: 5.70	
Sample 4		✓	RIN N/A	
Sample 5		✓	RIN: 5.40	
Sample 6		✓	RIN: 6.10	
Sample 7		✓	RIN: 6.20	
Sample 8		✓	RIN N/A	
Sample 9		✓	RIN: 5.70	
Sample 10		✓	RIN: 6.70	
Sample 11		✓	RIN: 6.20	
Sample 12		✓	RIN: 5.80	
Ladder		✓	All Other Samples	

Chip Lot #

Reagent Kit Lot #

Chip Comments :

Assay Class: Eukaryote Total RNA Nano
Data Path: C:\...ents and Settings\Bioanalyzer\2014-02-04\2014-02-04_007.xad

Created: 2/4/2014 3:32:42 PM
Modified: 2/4/2014 3:56:31 PM

Electrophoresis Assay Details

General Analysis Settings

Number of Available Sample and Ladder Wells (Max.) : 13
Minimum Visible Range [s] : 17
Maximum Visible Range [s] : 70
Start Analysis Time Range [s] : 19
End Analysis Time Range [s] : 69
Ladder Concentration [ng/μl] : 150
Lower Marker Concentration [ng/μl] : 0
Upper Marker Concentration [ng/μl] : 0
Used Lower Marker for Quantitation
Standard Curve Fit is Logarithmic
Show Data Aligned to Lower Marker

Integrator Settings

Integration Start Time [s] : 19
Integration End Time [s] : 69
Slope Threshold : 0.6
Height Threshold [FU] : 0.5
Area Threshold : 0.2
Width Threshold [s] : 0.5
Baseline Plateau [s] : 6

Filter Settings

Filter Width [s] : 0.5
Polynomial Order : 4

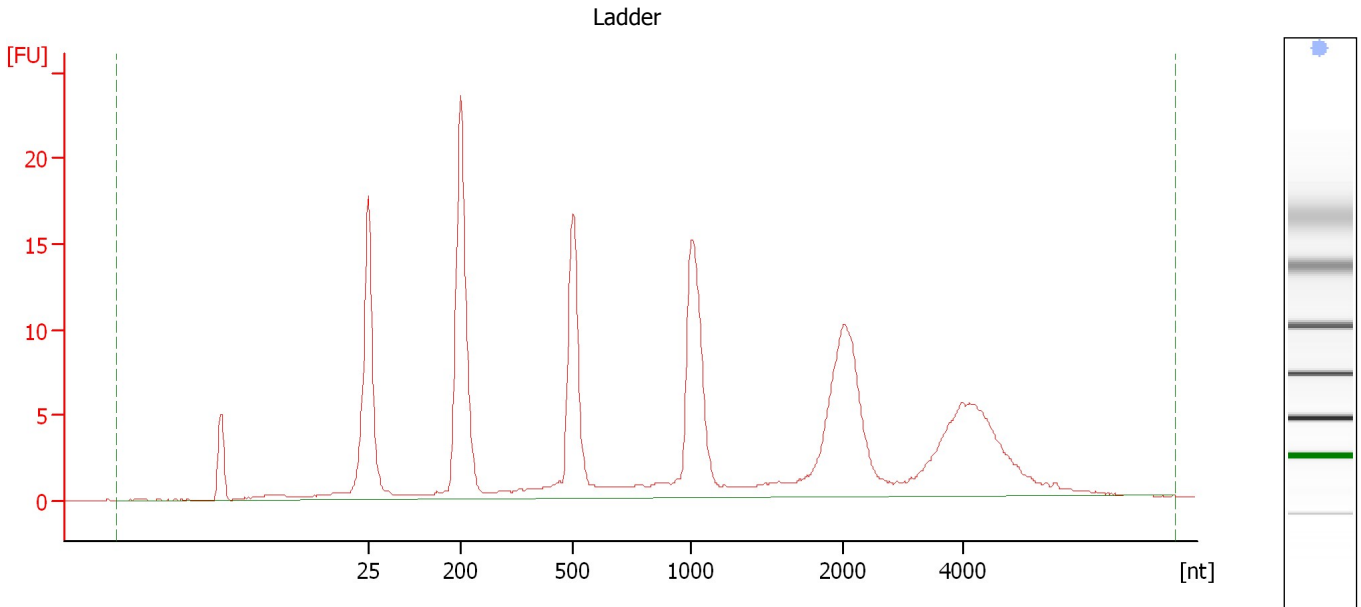
Ladder

Ladder Peak	Size
1	25
2	200
3	500
4	1000
5	2000
6	4000

Assay Class: Eukaryote Total RNA Nano
Data Path: C:\...ents and Settings\Bioanalyzer\2014-02-04\2014-02-04_007.xad

Created: 2/4/2014 3:32:42 PM
Modified: 2/4/2014 3:56:31 PM

Electropherogram Summary



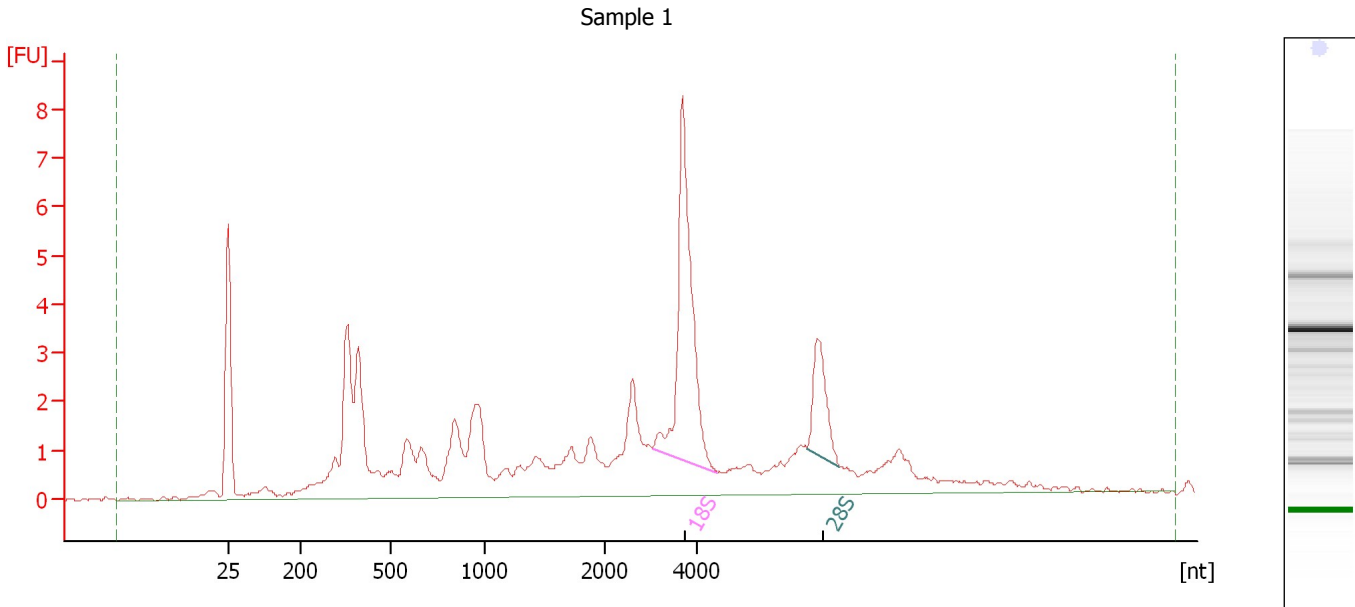
Overall Results for Ladder

RNA Area:	184.5	Result Flagging Color:	
RNA Concentration:	150 ng/μl	Result Flagging Label:	All Other Samples

Assay Class: Eukaryote Total RNA Nano
 Data Path: C:\...ents and Settings\Bioanalyzer\2014-02-04\2014-02-04_007.xad

Created: 2/4/2014 3:32:42 PM
 Modified: 2/4/2014 3:56:31 PM

Electropherogram Summary Continued ...



Overall Results for sample 1 : Sample 1

RNA Area:	76.7	RNA Integrity Number (RIN):	6.6 (B.02.08)
RNA Concentration:	62 ng/μl	Result Flagging Color:	
rRNA Ratio [28s / 18s]:	0.3	Result Flagging Label:	RIN: 6.60

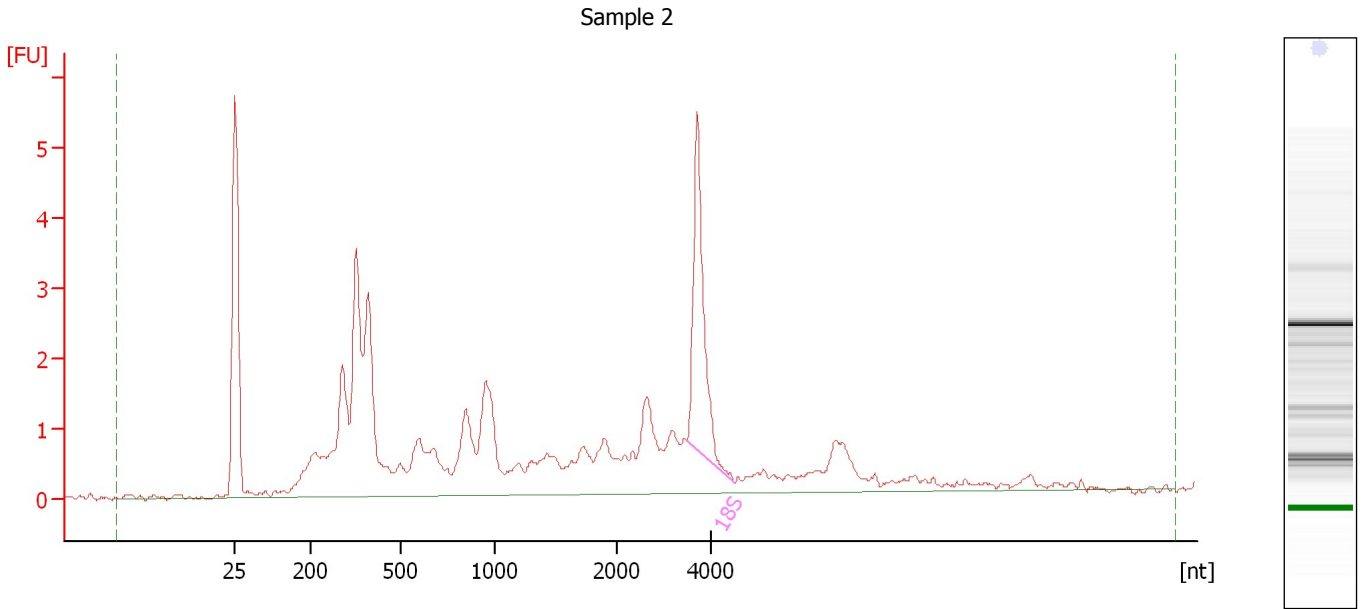
Fragment table for sample 1 : Sample 1

Name	Start Size [nt]	End Size [nt]	Area	% of total Area
18S	3,032	4,422	11.7	15.2
28S	6,337	7,021	3.2	4.2

Assay Class: Eukaryote Total RNA Nano
Data Path: C:\...ents and Settings\Bioanalyzer\2014-02-04\2014-02-04_007.xad

Created: 2/4/2014 3:32:42 PM
Modified: 2/4/2014 3:56:31 PM

Electropherogram Summary Continued ...



Overall Results for sample 2 : Sample 2

RNA Area:	52.2	RNA Integrity Number (RIN):	5.8 (B.02.08)
RNA Concentration:	42 ng/μl	Result Flagging Color:	
rRNA Ratio [28s / 18s]:	0.0	Result Flagging Label:	RIN: 5.80

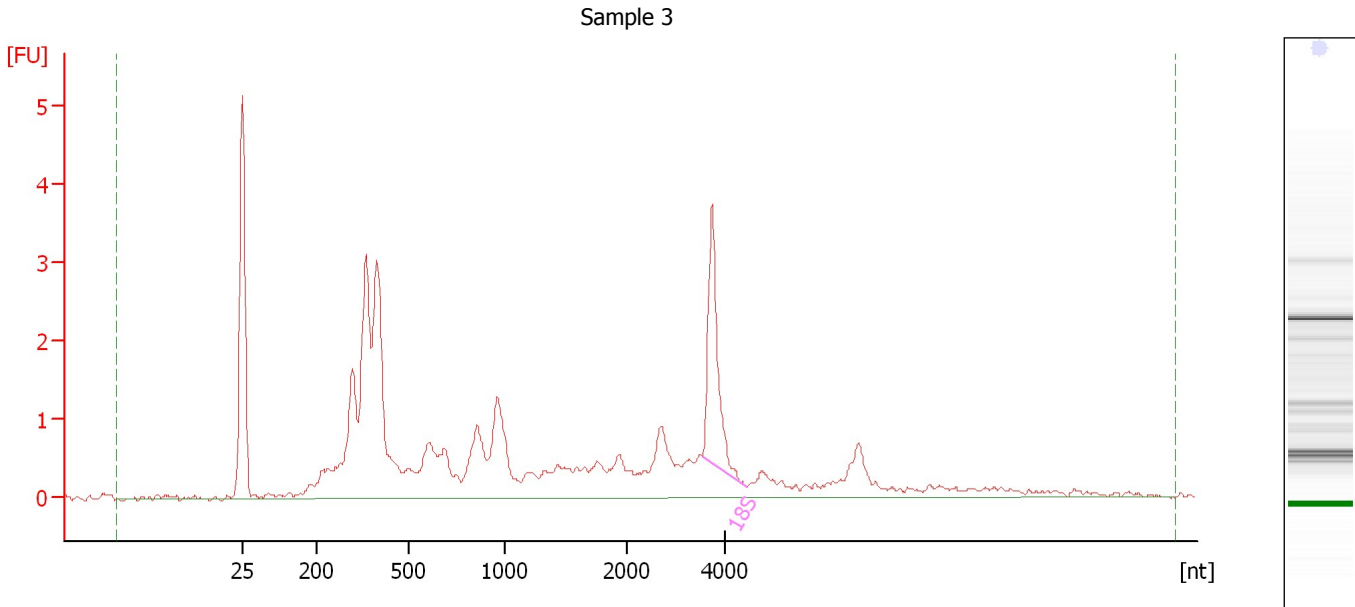
Fragment table for sample 2 : Sample 2

Name	Start Size [nt]	End Size [nt]	Area	% of total Area
18S	3,489	4,479	5.5	10.6

Assay Class: Eukaryote Total RNA Nano
Data Path: C:\...ents and Settings\Bioanalyzer\2014-02-04\2014-02-04_007.xad

Created: 2/4/2014 3:32:42 PM
Modified: 2/4/2014 3:56:31 PM

Electropherogram Summary Continued ...



Overall Results for sample 3 : Sample 3

RNA Area:	41.8	RNA Integrity Number (RIN):	5.7 (B.02.08)
RNA Concentration:	34 ng/μl	Result Flagging Color:	
rRNA Ratio [28s / 18s]:	0.0	Result Flagging Label:	RIN: 5.70

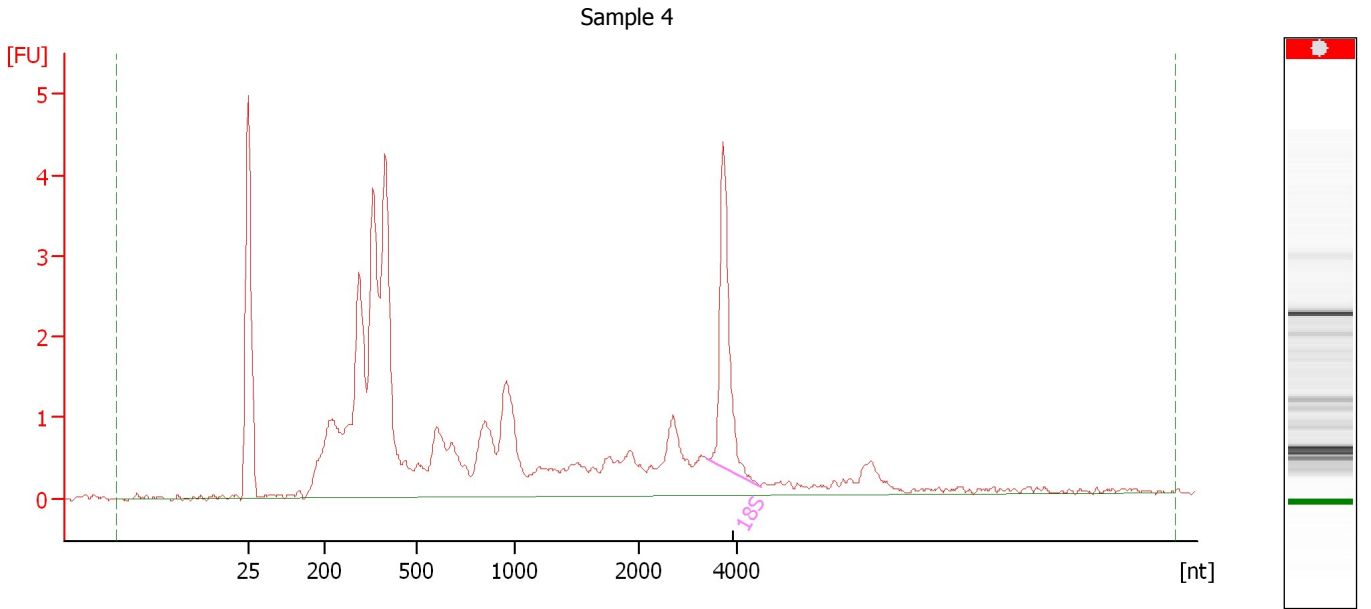
Fragment table for sample 3 : Sample 3

Name	Start Size [nt]	End Size [nt]	Area	% of total Area
18S	3,555	4,465	3.5	8.3

Assay Class: Eukaryote Total RNA Nano
 Data Path: C:\...ents and Settings\Bioanalyzer\2014-02-04\2014-02-04_007.xad

Created: 2/4/2014 3:32:42 PM
 Modified: 2/4/2014 3:56:31 PM

Electropherogram Summary Continued ...



Overall Results for sample 4 : Sample 4

RNA Area:	48.4	RNA Integrity Number (RIN):	N/A (B.02.08)
RNA Concentration:	39 ng/μl	Result Flagging Color:	
rRNA Ratio [28s / 18s]:	0.0	Result Flagging Label:	RIN N/A

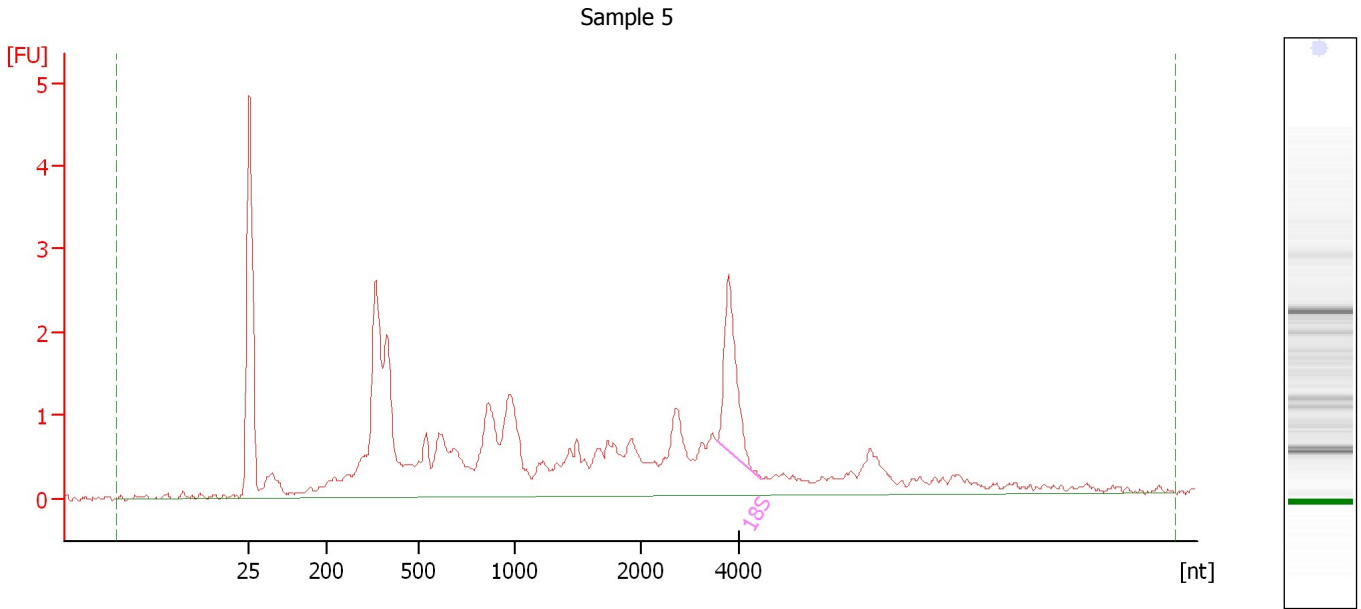
Fragment table for sample 4 : Sample 4

Name	Start Size [nt]	End Size [nt]	Area	% of total Area
18S	3,421	4,496	4.0	8.3

Assay Class: Eukaryote Total RNA Nano
Data Path: C:\...ents and Settings\Bioanalyzer\2014-02-04\2014-02-04_007.xad

Created: 2/4/2014 3:32:42 PM
Modified: 2/4/2014 3:56:31 PM

Electropherogram Summary Continued ...



Overall Results for sample 5 : Sample 5

RNA Area:	39.8	RNA Integrity Number (RIN):	5.4 (B.02.08)
RNA Concentration:	32 ng/μl	Result Flagging Color:	
rRNA Ratio [28s / 18s]:	0.0	Result Flagging Label:	RIN: 5.40

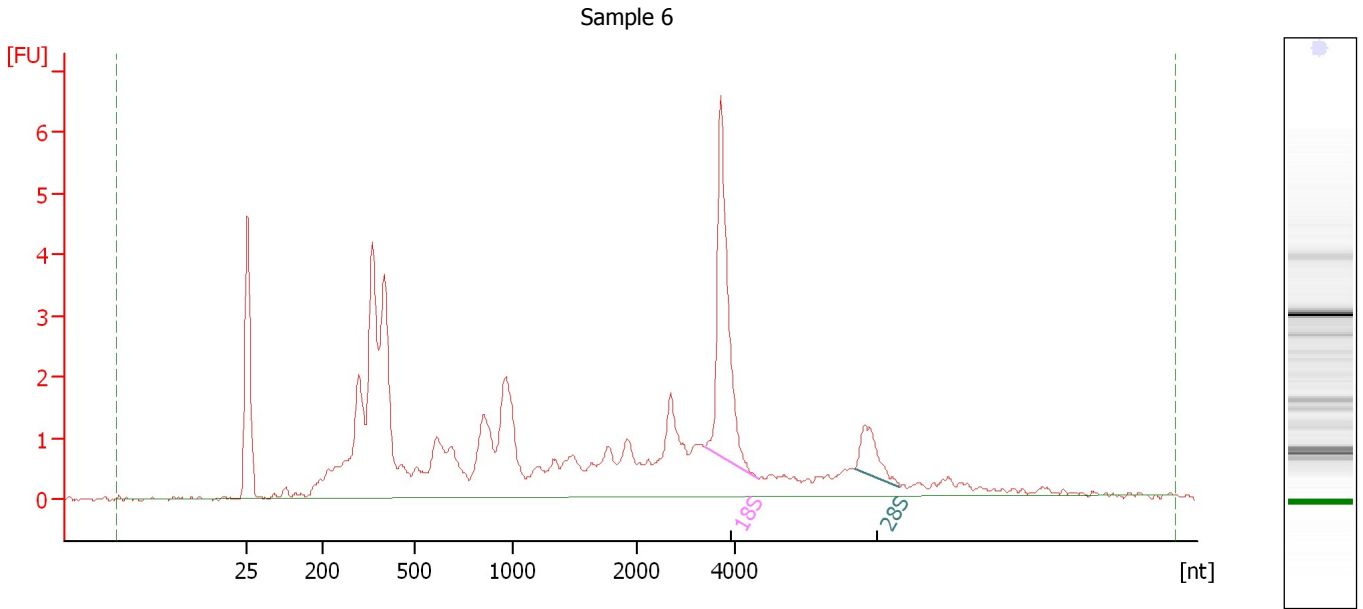
Fragment table for sample 5 : Sample 5

Name	Start Size [nt]	End Size [nt]	Area	% of total Area
18S	3,556	4,476	2.8	7.0

Assay Class: Eukaryote Total RNA Nano
 Data Path: C:\...ents and Settings\Bioanalyzer\2014-02-04\2014-02-04_007.xad

Created: 2/4/2014 3:32:42 PM
 Modified: 2/4/2014 3:56:31 PM

Electropherogram Summary Continued ...



Overall Results for sample 6 : Sample 6

RNA Area:	61.8	RNA Integrity Number (RIN):	6.1 (B.02.08)
RNA Concentration:	50 ng/μl	Result Flagging Color:	
rRNA Ratio [28s / 18s]:	0.2	Result Flagging Label:	RIN: 6.10

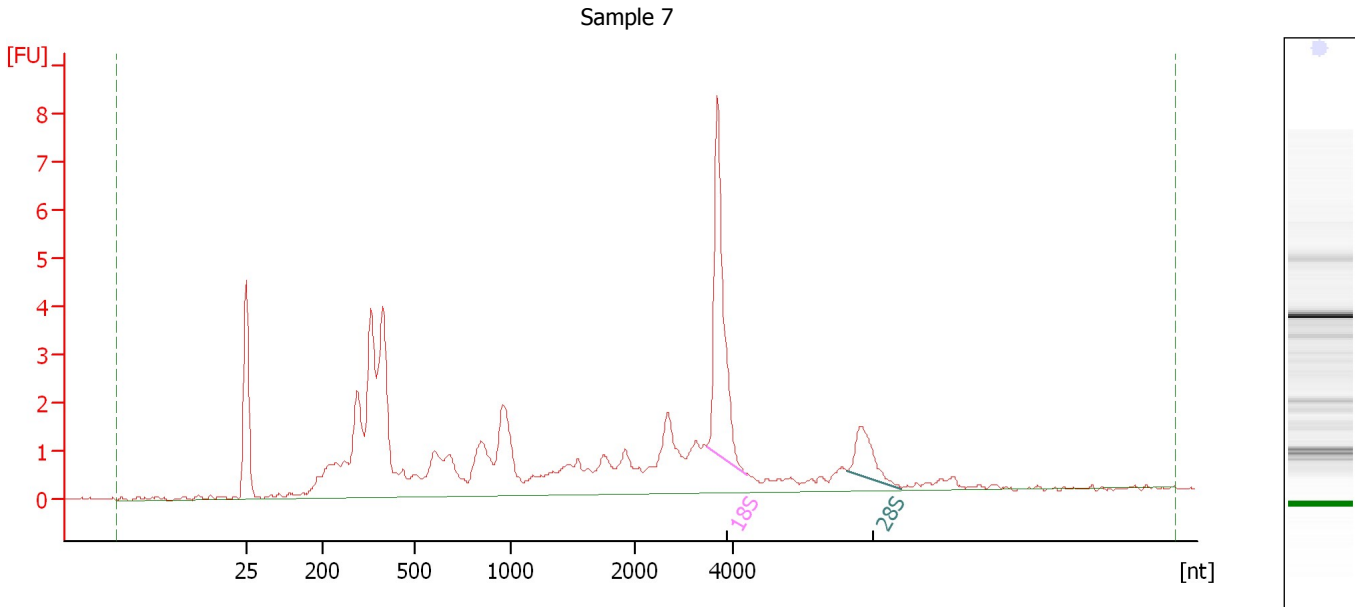
Fragment table for sample 6 : Sample 6

Name	Start Size [nt]	End Size [nt]	Area	% of total Area
18S	3,395	4,495	6.9	11.2
28S	6,474	7,398	1.3	2.2

Assay Class: Eukaryote Total RNA Nano
Data Path: C:\...ents and Settings\Bioanalyzer\2014-02-04\2014-02-04_007.xad

Created: 2/4/2014 3:32:42 PM
Modified: 2/4/2014 3:56:31 PM

Electropherogram Summary Continued ...



Overall Results for sample 7 : Sample 7

RNA Area:	60.6	RNA Integrity Number (RIN):	6.2 (B.02.08)
RNA Concentration:	49 ng/μl	Result Flagging Color:	
rRNA Ratio [28s / 18s]:	0.2	Result Flagging Label:	RIN: 6.20

Fragment table for sample 7 : Sample 7

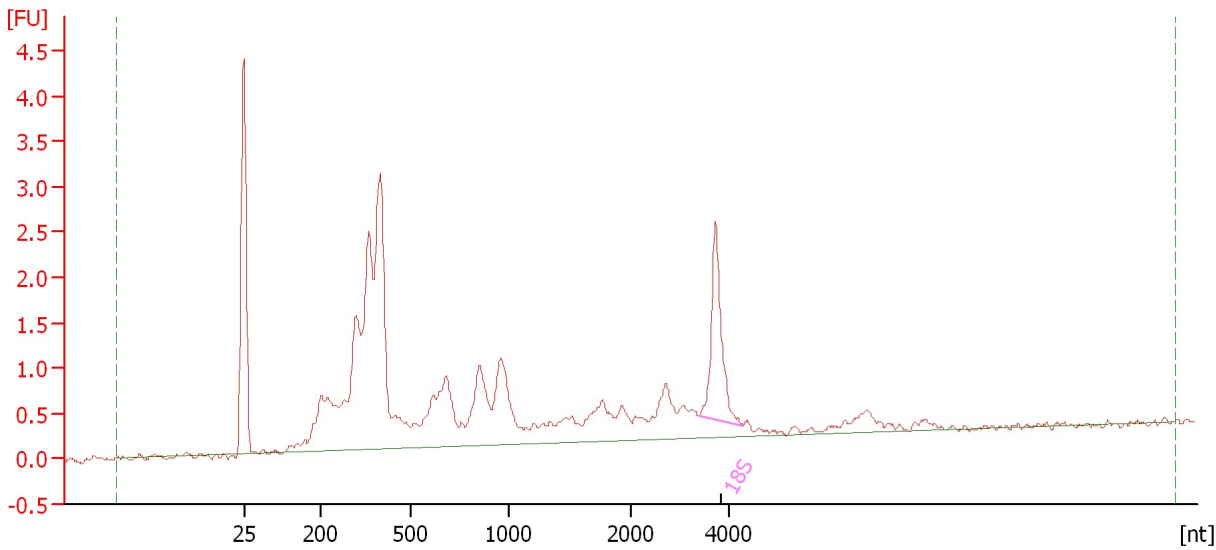
Name	Start Size [nt]	End Size [nt]	Area	% of total Area
18S	3,480	4,295	7.9	13.0
28S	6,389	7,491	1.8	2.9

Assay Class: Eukaryote Total RNA Nano
Data Path: C:\...ents and Settings\Bioanalyzer\2014-02-04\2014-02-04_007.xad

Created: 2/4/2014 3:32:42 PM
Modified: 2/4/2014 3:56:31 PM

Electropherogram Summary Continued ...

Sample 8



Overall Results for sample 8 : Sample 8

RNA Area:	31.6	RNA Integrity Number (RIN):	N/A (B.02.08)
RNA Concentration:	26 ng/μl	Result Flagging Color:	
rRNA Ratio [28s / 18s]:	0.0	Result Flagging Label:	RIN N/A

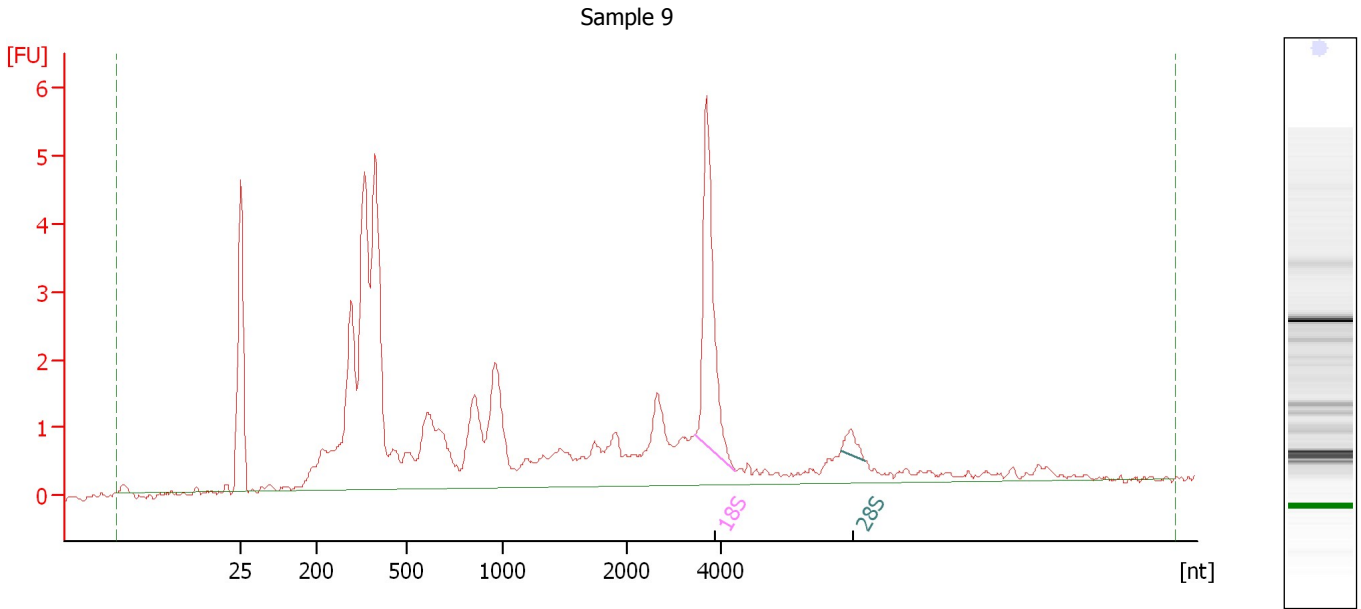
Fragment table for sample 8 : Sample 8

Name	Start Size [nt]	End Size [nt]	Area	% of total Area
18S	3,406	4,314	2.5	7.9

Assay Class: Eukaryote Total RNA Nano
Data Path: C:\...ents and Settings\Bioanalyzer\2014-02-04\2014-02-04_007.xad

Created: 2/4/2014 3:32:42 PM
Modified: 2/4/2014 3:56:31 PM

Electropherogram Summary Continued ...



Overall Results for sample 9 : Sample 9

RNA Area:	58.3	RNA Integrity Number (RIN):	5.7 (B.02.08)
RNA Concentration:	47 ng/μl	Result Flagging Color:	
rRNA Ratio [28s / 18s]:	0.1	Result Flagging Label:	RIN: 5.70

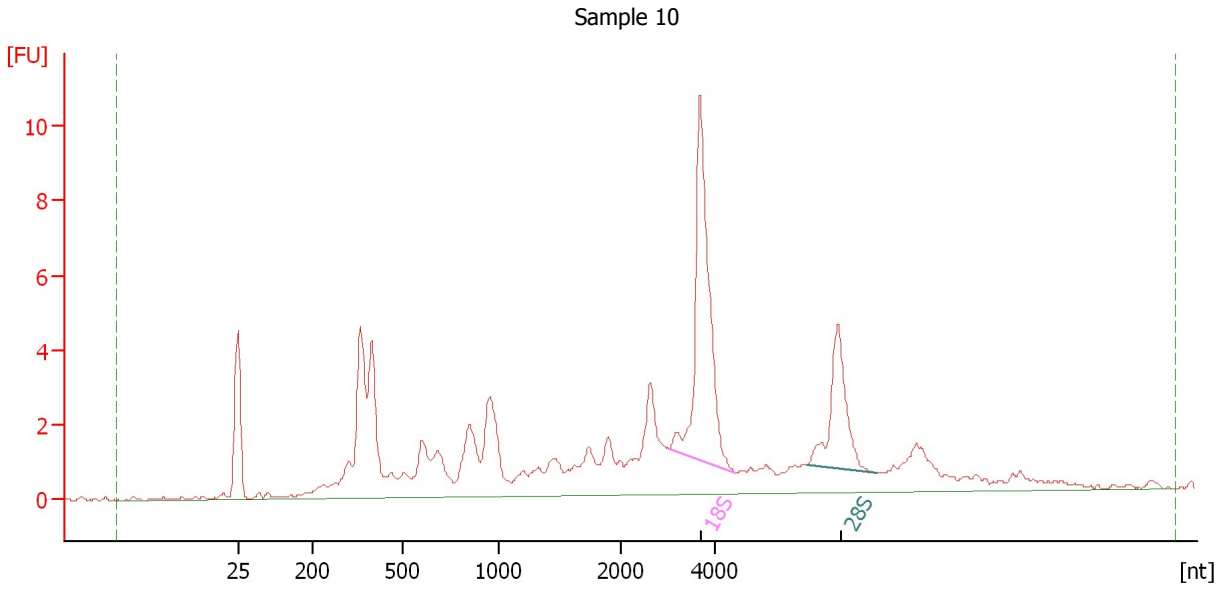
Fragment table for sample 9 : Sample 9

Name	Start Size [nt]	End Size [nt]	Area	% of total Area
18S	3,440	4,286	5.7	9.8
28S	6,467	6,979	0.4	0.7

Assay Class: Eukaryote Total RNA Nano
Data Path: C:\...ents and Settings\Bioanalyzer\2014-02-04\2014-02-04_007.xad

Created: 2/4/2014 3:32:42 PM
Modified: 2/4/2014 3:56:31 PM

Electropherogram Summary Continued ...



Overall Results for sample 10 : Sample 10

RNA Area: 95.2 RNA Integrity Number (RIN): 6.7 (B.02.08)
RNA Concentration: 77 ng/μl Result Flagging Color:
rRNA Ratio [28s / 18s]: 0.4 Result Flagging Label: RIN: 6.70

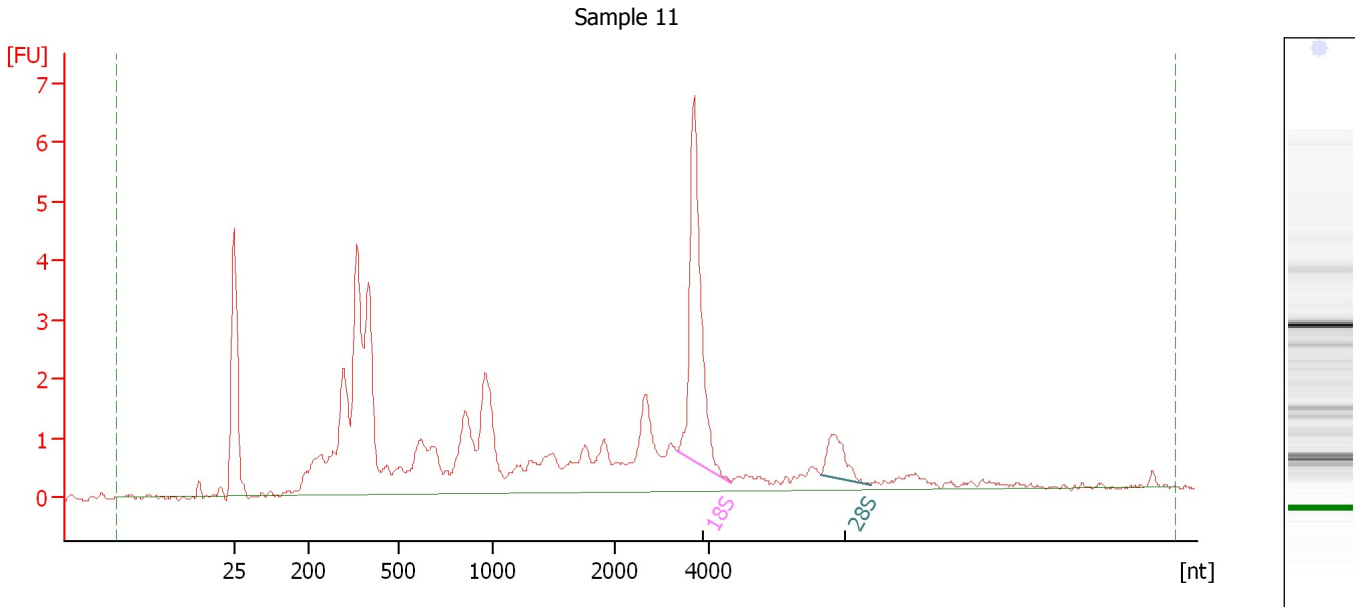
Fragment table for sample 10 : Sample 10

Name	Start Size [nt]	End Size [nt]	Area	% of total Area
18S	3,026	4,414	15.4	16.1
28S	5,914	7,392	6.2	6.5

Assay Class: Eukaryote Total RNA Nano
 Data Path: C:\...ents and Settings\Bioanalyzer\2014-02-04\2014-02-04_007.xad

Created: 2/4/2014 3:32:42 PM
 Modified: 2/4/2014 3:56:31 PM

Electropherogram Summary Continued ...



Overall Results for sample 11 : Sample 11

RNA Area:	57.9	RNA Integrity Number (RIN):	6.2 (B.02.08)
RNA Concentration:	47 ng/μl	Result Flagging Color:	
rRNA Ratio [28s / 18s]:	0.2	Result Flagging Label:	RIN: 6.20

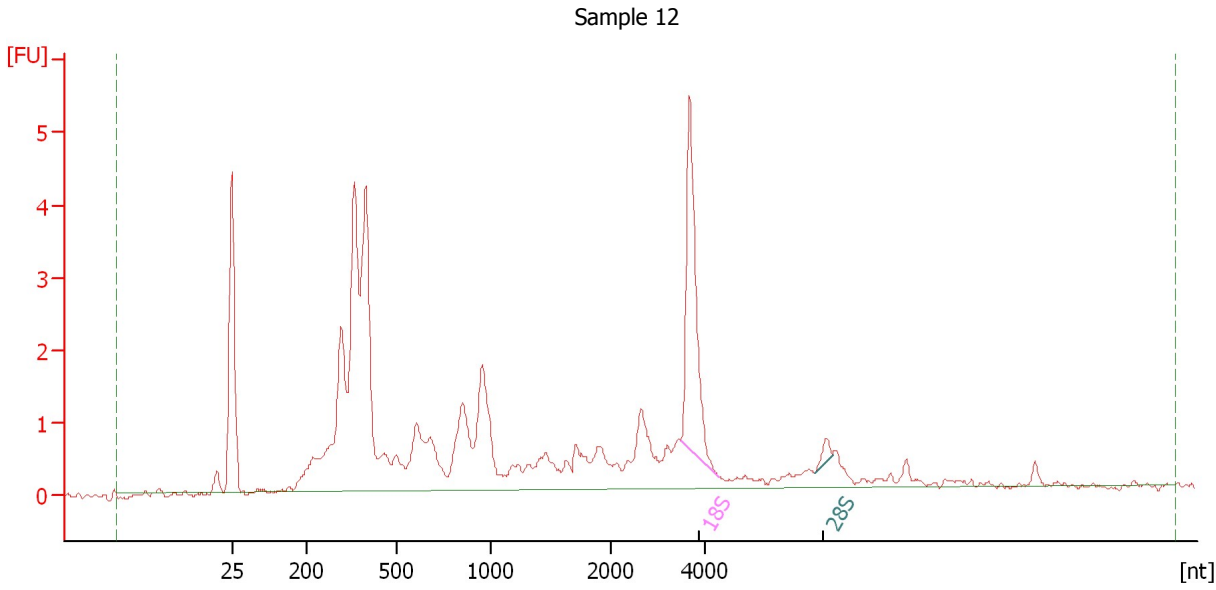
Fragment table for sample 11 : Sample 11

Name	Start Size [nt]	End Size [nt]	Area	% of total Area
18S	3,306	4,454	7.5	13.0
28S	6,324	7,382	1.3	2.3

Assay Class: Eukaryote Total RNA Nano
 Data Path: C:\...ents and Settings\Bioanalyzer\2014-02-04\2014-02-04_007.xad

Created: 2/4/2014 3:32:42 PM
 Modified: 2/4/2014 3:56:31 PM

Electropherogram Summary Continued ...



Overall Results for sample 12 : Sample 12

RNA Area:	48.3	RNA Integrity Number (RIN):	5.8 (B.02.08)
RNA Concentration:	39 ng/μl	Result Flagging Color:	
rRNA Ratio [28s / 18s]:	0.0	Result Flagging Label:	RIN: 5.80

Fragment table for sample 12 : Sample 12

Name	Start Size [nt]	End Size [nt]	Area	% of total Area
18S	3,456	4,270	5.2	10.8
28S	6,328	6,690	0.2	0.5

Assay Class: Eukaryote Total RNA Nano
Data Path: C:\...ents and Settings\Bioanalyzer\2014-02-04\2014-02-04_007.xad

Created: 2/4/2014 3:32:42 PM
Modified: 2/4/2014 3:56:31 PM

Gel Image

