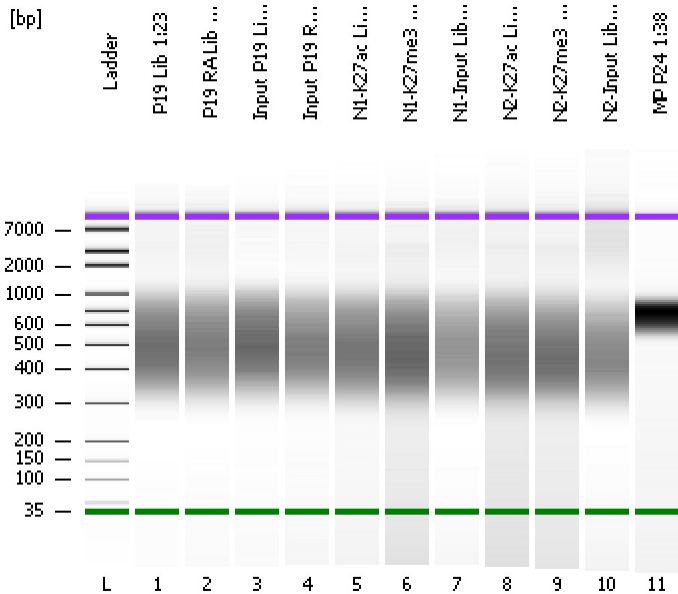


Assay Class: High Sensitivity DNA Assay
Data Path: C:\...ents and Settings\Bioanalyzer\2014-02-05\2014-02-05_002.xad

Created: 2/5/2014 12:32:13 PM
Modified: 2/5/2014 1:13:26 PM

Electrophoresis File Run Summary



Instrument Information:

Instrument Name: DE13701086 Firmware: C.01.069
Serial#: DE13701086 Type: G2938B

Assay Information:

Assay Origin Path: C:\Program Files\Agilent\2100 bioanalyzer\2100 expert\assays\dsDNA\High Sensitivity DNA.xsy
Assay Class: High Sensitivity DNA Assay
Version: 1.03
Assay Comments: Copyright © 2003-2010 Agilent Technologies

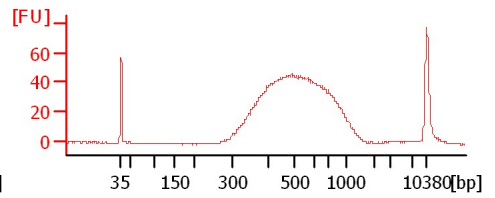
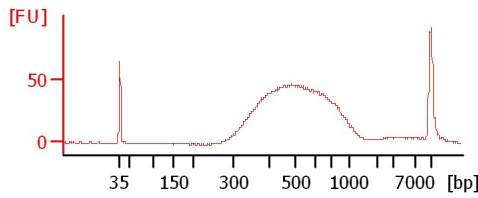
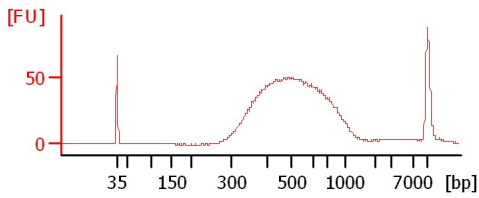
Chip Information:

Chip Lot #:
Reagent Kit Lot #:
Chip Comments:

P19 Lib 1:23

P19 RA Lib 1:24

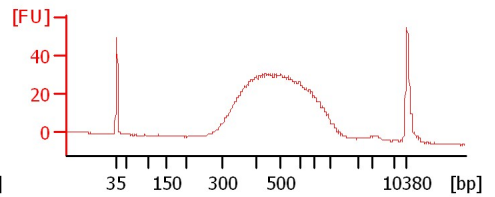
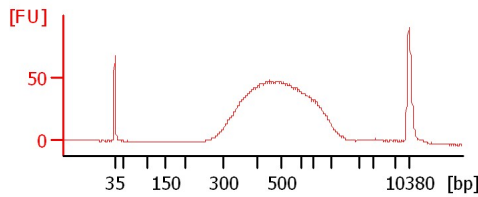
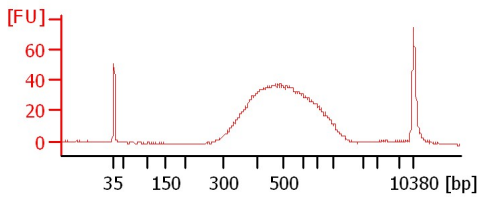
Input P19 Lib 1:20



Input P19 RA Lib 1:20

N1-K27ac Lib 1:25

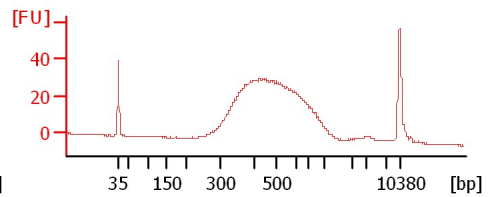
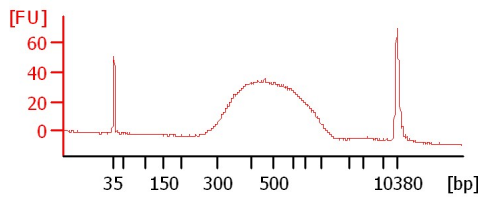
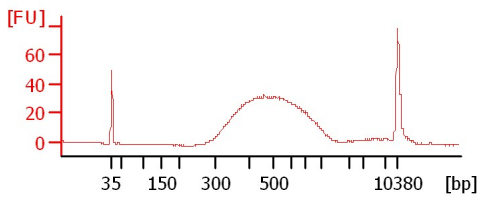
N1-K27me3 Lib 1:16



N1-Input Lib 1:27

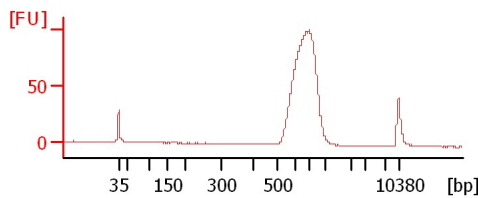
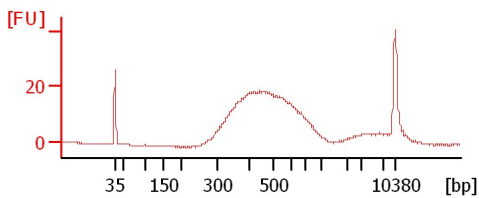
N2-K27ac Lib 1:18

N2-K27me3 Lib 1:16



N2-Input Lib 1:27

MP P24 1:38



Assay Class: High Sensitivity DNA Assay
Data Path: C:\...ents and Settings\Bioanalyzer\2014-02-05\2014-02-05_002.xad

Created: 2/5/2014 12:32:13 PM
Modified: 2/5/2014 1:13:26 PM

Electrophoresis File Run Summary (Chip Summary)

Sample Name	Sample Comment	Rest. Digest	Status	Observation	Result Label	Result Color
P19 Lib 1:23		<input type="checkbox"/>	✓			
P19 RA Lib 1:24		<input type="checkbox"/>	✓			
Input P19 Lib 1:20		<input type="checkbox"/>	✓			
Input P19 RA Lib 1:20		<input type="checkbox"/>	✓			
N1-K27ac Lib 1:25		<input type="checkbox"/>	✓			
N1-K27me3 Lib 1:16		<input type="checkbox"/>	✓			
N1-Input Lib 1:27		<input type="checkbox"/>	✓			
N2-K27ac Lib 1:18		<input type="checkbox"/>	✓			
N2-K27me3 Lib 1:16		<input type="checkbox"/>	✓			
N2-Input Lib 1:27		<input type="checkbox"/>	✓			
MP P24 1:38		<input type="checkbox"/>	✓			
Ladder		<input type="checkbox"/>	✓			

Chip Lot #

Reagent Kit Lot #

Chip Comments :

Assay Class: High Sensitivity DNA Assay
 Data Path: C:\...ents and Settings\Bioanalyzer\2014-02-05\2014-02-05_002.xad

Created: 2/5/2014 12:32:13 PM
 Modified: 2/5/2014 1:13:26 PM

Electrophoresis Assay Details

General Analysis Settings

Number of Available Sample and Ladder Wells (Max.) : 12
 Minimum Visible Range [s] : 32
 Maximum Visible Range [s] : 138
 Start Analysis Time Range [s] : 33
 End Analysis Time Range [s] : 137.5
 Ladder Concentration [pg/μl] : 1950
 Uses Standard Area for Ladder Fragments
 Lower Marker Concentration [pg/μl] : 125
 Upper Marker Concentration [pg/μl] : 75
 Used Upper Marker for Quantitation
 Standard Curve Fit is Point to Point
 Show Data Aligned to Lower and Upper Marker

Integrator Settings

Integration Start Time [s] : 33.05
 Integration End Time [s] : 137
 Slope Threshold : 0.8
 Height Threshold [FU] : 5
 Area Threshold : 0.1
 Width Threshold [s] : 0.6
 Baseline Plateau [s] : 0.5

Filter Settings

Filter Width [s] : 0.5
 Polynomial Order : 4

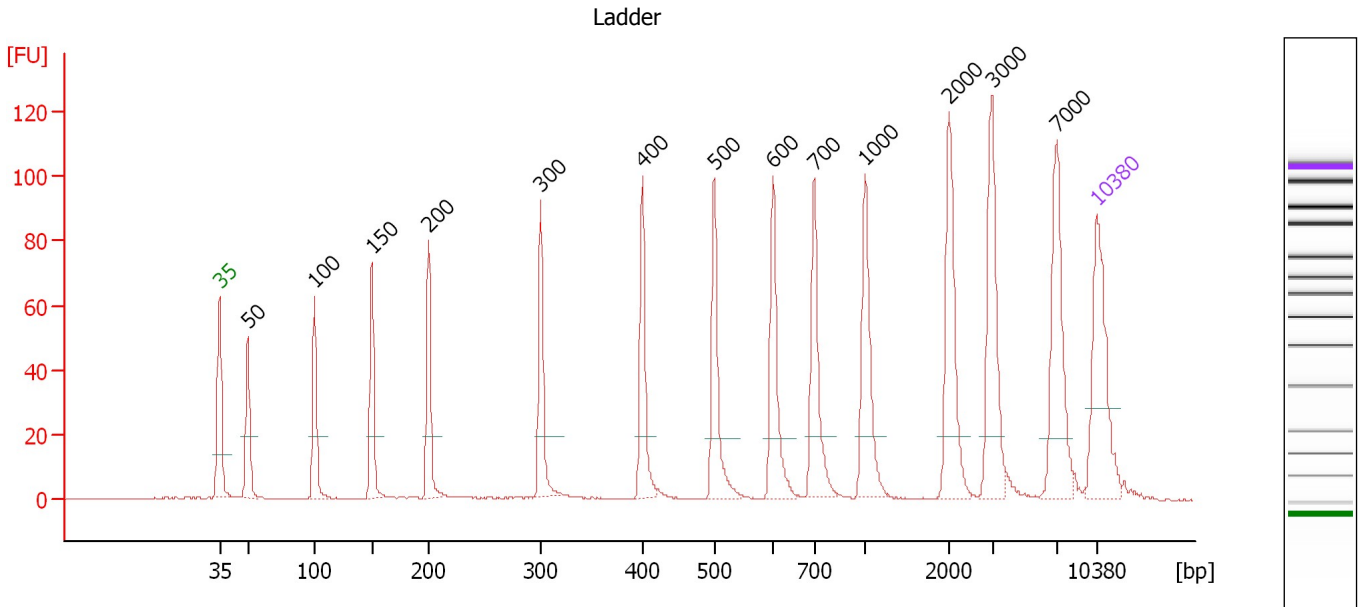
Ladder

Ladder Peak	Size	Area
1	35	160
2	50	210
3	100	208
4	150	221
5	200	242
6	300	270
7	400	305
8	500	306
9	600	336
10	700	321
11	1000	366
12	2000	413
13	3000	411
14	7000	400
15	10380	214

Assay Class: High Sensitivity DNA Assay
 Data Path: C:\...ents and Settings\Bioanalyzer\2014-02-05\2014-02-05_002.xad

Created: 2/5/2014 12:32:13 PM
 Modified: 2/5/2014 1:13:26 PM

Electropherogram Summary



Overall Results for Ladder

Noise: 0.1

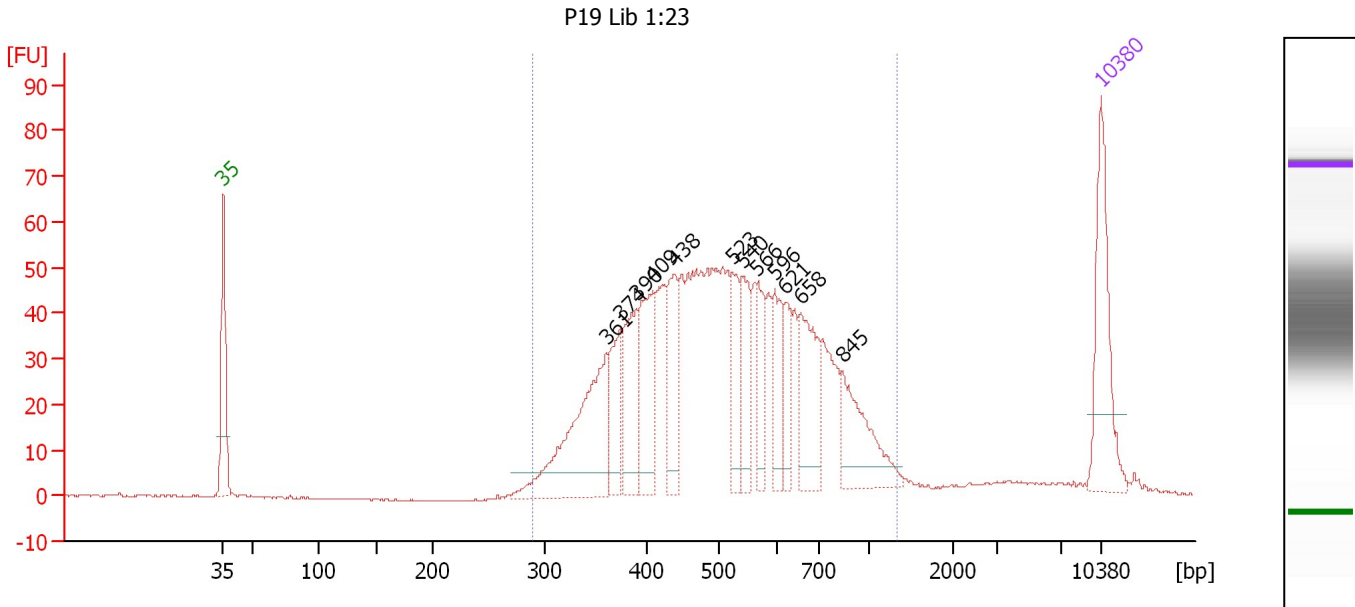
Peak table for Ladder

Peak	Aligned Migration Time [s]	Size [bp]	Conc. [pg/μl]	Molarity [pmol/l]	Observations
1	43.00	35	125.00	5,411.3	Lower Marker
2	45.26	50	150.00	4,545.5	Ladder Peak
3	50.57	100	150.00	2,272.7	Ladder Peak
4	55.17	150	150.00	1,515.2	Ladder Peak
5	59.68	200	150.00	1,136.4	Ladder Peak
6	68.62	300	150.00	757.6	Ladder Peak
7	76.74	400	150.00	568.2	Ladder Peak
8	82.49	500	150.00	454.5	Ladder Peak
9	87.17	600	150.00	378.8	Ladder Peak
10	90.45	700	150.00	324.7	Ladder Peak
11	94.53	1,000	150.00	227.3	Ladder Peak
12	101.21	2,000	150.00	113.6	Ladder Peak
13	104.66	3,000	150.00	75.8	Ladder Peak
14	109.81	7,000	150.00	32.5	Ladder Peak
15	113.00	10,380	75.00	10.9	Upper Marker

Assay Class: High Sensitivity DNA Assay
 Data Path: C:\...ents and Settings\Bioanalyzer\2014-02-05\2014-02-05_002.xad

Created: 2/5/2014 12:32:13 PM
 Modified: 2/5/2014 1:13:26 PM

Electropherogram Summary Continued ...



Overall Results for sample 1 : P19 Lib 1:23

Number of peaks found: 12 Corr. Area 1: 1,205.1
 Noise: 0.2

Peak table for sample 1 : P19 Lib 1:23

Peak	Aligned Migration Time [s]	Size [bp]	Conc. [pg/μl]	Molarity [pmol/l]	Observations
1	43.00	35	125.00	5,411.3	Lower Marker
2	73.58	361	172.55	724.2	
3	74.64	374	58.07	235.2	
4	75.92	390	78.08	303.5	
5	77.28	409	89.56	331.6	
6	78.94	438	65.03	224.9	
7	83.57	523	51.48	149.1	
8	84.38	540	51.55	144.6	
9	85.57	566	42.39	113.5	
10	86.97	596	47.79	121.5	
11	87.87	621	32.75	79.9	
12	89.06	658	82.89	191.0	
13	92.42	845	73.21	131.3	
14	113.00	10,380	75.00	10.9	Upper Marker

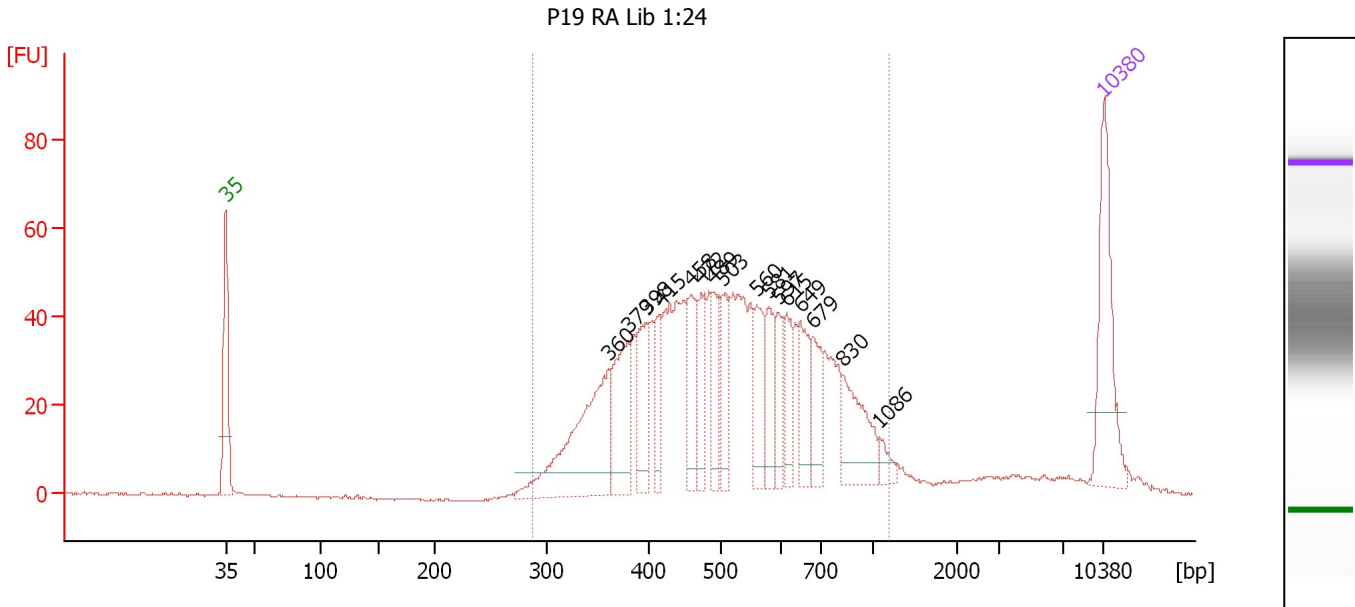
Region table for sample 1 : P19 Lib 1:23

From [bp]	To [bp]	Average Size [bp]	Molarity [pmol/l]	Conc. [pg/μl]	Corr. Area	% of Total	Size distribution in CV [%]	Color
290	1,324	537	4,360.1	1,379.38	1,205.1	96	32.0	Blue

Assay Class: High Sensitivity DNA Assay
 Data Path: C:\...ents and Settings\Bioanalyzer\2014-02-05\2014-02-05_002.xad

Created: 2/5/2014 12:32:13 PM
 Modified: 2/5/2014 1:13:26 PM

Electropherogram Summary Continued ...



Overall Results for sample 2 : P19 RA Lib 1:24

Number of peaks found: 16 Corr. Area 1: 1,111.9
 Noise: 0.3

Peak table for sample 2 : P19 RA Lib 1:24

Peak	Aligned Migration Time [s]	Size [bp]	Conc. [pg/μl]	Molarity [pmol/l]	Observations
1	43.00	35	125.00	5,411.3	Lower Marker
2	73.47	360	164.94	694.7	
3	75.05	379	80.03	319.8	
4	76.58	398	57.76	219.9	
5	77.60	415	36.67	133.9	
6	80.10	458	61.14	202.0	
7	80.87	472	41.64	133.7	
8	81.85	489	38.62	119.7	
9	82.61	503	45.69	137.7	
10	85.29	560	45.65	123.5	
11	86.27	581	43.38	113.2	
12	87.03	597	26.97	68.5	
13	87.67	615	34.14	84.1	
14	88.77	649	45.07	105.2	
15	89.75	679	37.81	84.4	
16	92.22	830	60.48	110.4	
17	95.11	1,086	10.66	14.9	
18	113.00	10,380	75.00	10.9	Upper Marker

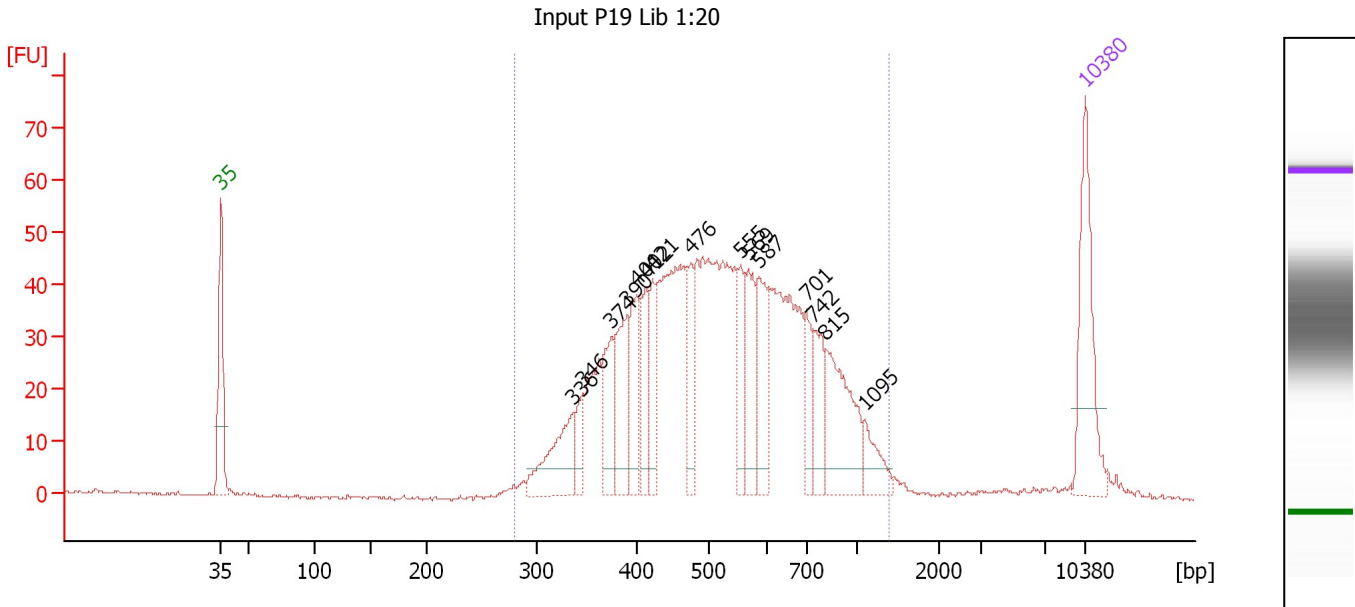
Region table for sample 2 : P19 RA Lib 1:24

From [bp]	To [bp]	Average Size [bp]	Molarity [pmol/l]	Conc. [pg/μl]	Corr. Area	% of Total	Size distribution in CV [%]	Color
288	1,191	536	3,975.9	1,257.25	1,111.9	94	30.9	Blue

Assay Class: High Sensitivity DNA Assay
 Data Path: C:\...ents and Settings\Bioanalyzer\2014-02-05\2014-02-05_002.xad

Created: 2/5/2014 12:32:13 PM
 Modified: 2/5/2014 1:13:26 PM

Electropherogram Summary Continued ...



Overall Results for sample 3 : Input P19 Lib 1:20

Number of peaks found: 15 Corr. Area 1: 1,110.0
 Noise: 0.3

Peak table for sample 3 : Input P19 Lib 1:20

Peak	Aligned Migration Time [s]	Size [bp]	Conc. [pg/μl]	Molarity [pmol/l]	Observations
1	43.00	35	125.00	5,411.3	Lower Marker
2	71.54	336	73.36	330.8	
3	72.32	346	25.64	112.4	
4	74.65	374	54.76	221.7	
5	75.95	390	70.50	273.8	
6	76.73	400	58.14	220.4	
7	77.46	412	51.26	188.3	
8	77.98	421	40.45	145.4	
9	81.09	476	42.16	134.3	
10	85.06	555	37.36	102.0	
11	85.71	569	57.63	153.5	
12	86.57	587	59.25	152.9	
13	90.46	701	35.48	76.7	
14	91.02	742	40.77	83.2	
15	92.01	815	88.48	164.5	
16	95.17	1,095	24.47	33.9	
17	113.00	10,380	75.00	10.9	Upper Marker

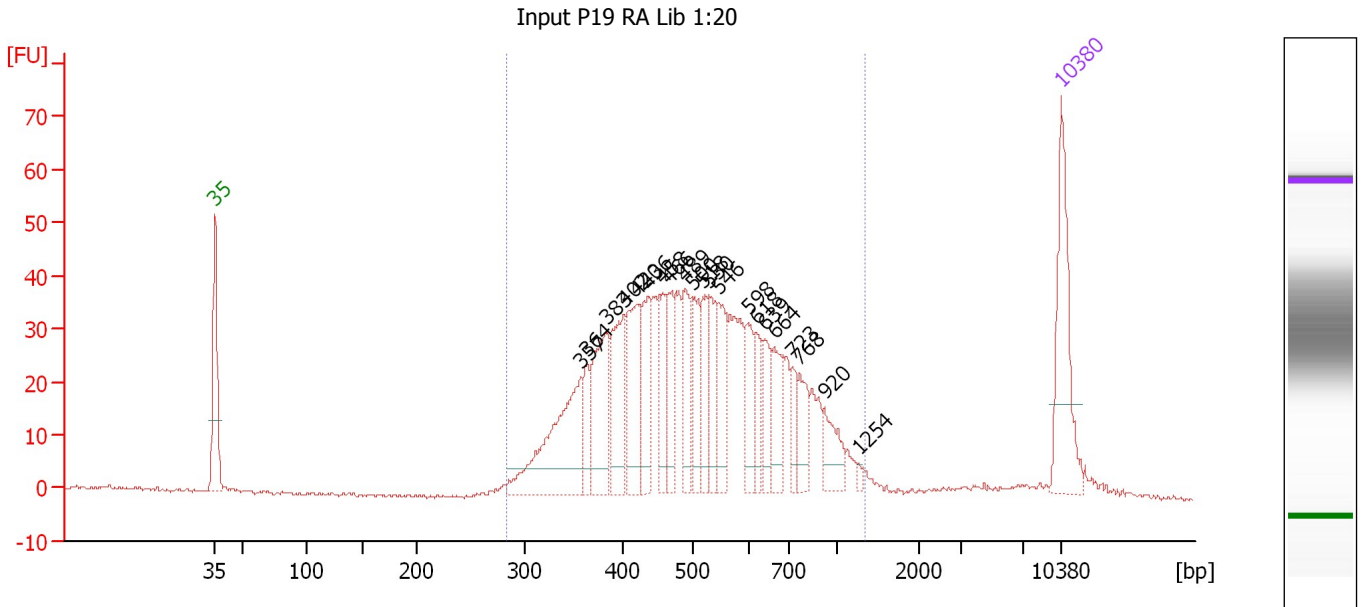
Region table for sample 3 : Input P19 Lib 1:20

From [bp]	To [bp]	Average Size [bp]	Molarity [pmol/l]	Conc. [pg/μl]	Corr. Area	% of Total	Size distribution in CV [%]	Color
280	1,382	552	4,506.4	1,450.45	1,110.0	97	33.6	Blue

Assay Class: High Sensitivity DNA Assay
 Data Path: C:\...ents and Settings\Bioanalyzer\2014-02-05\2014-02-05_002.xad

Created: 2/5/2014 12:32:13 PM
 Modified: 2/5/2014 1:13:26 PM

Electropherogram Summary Continued ...



Overall Results for sample 4 : Input P19 RA Lib 1:20

Number of peaks found: 21 Corr. Area 1: 899.2
 Noise: 0.4

Peak table for sample 4 : Input P19 RA Lib 1:20

Peak	Aligned Migration Time [s]	Size [bp]	Conc. [pg/μl]	Molarity [pmol/l]	Observations
1	43.00	35	125.00	5,411.3	Lower Marker
2	73.28	357	143.68	609.2	
3	73.81	364	32.68	136.1	
4	75.40	383	86.99	343.8	
5	76.85	402	79.29	298.9	
6	77.91	420	79.72	287.4	
7	78.79	436	54.40	189.2	
8	80.07	458	39.81	131.7	
9	80.56	466	39.73	129.1	
10	81.84	489	45.14	139.9	
11	82.50	500	43.12	130.6	
12	83.34	518	36.77	107.5	
13	83.91	530	35.88	102.5	
14	84.62	546	53.93	149.8	
15	87.09	598	38.19	96.7	
16	87.75	618	26.14	64.1	
17	88.46	639	32.61	77.3	
18	89.25	664	41.36	94.4	
19	90.76	723	20.04	42.0	
20	91.37	768	29.90	59.0	
21	93.45	920	29.71	48.9	
22	96.23	1,254	3.40	4.1	
23	113.00	10,380	75.00	10.9	Upper Marker

Assay Class: High Sensitivity DNA Assay
Data Path: C:\...ents and Settings\Bioanalyzer\2014-02-05\2014-02-05_002.xad

Created: 2/5/2014 12:32:13 PM
Modified: 2/5/2014 1:13:26 PM

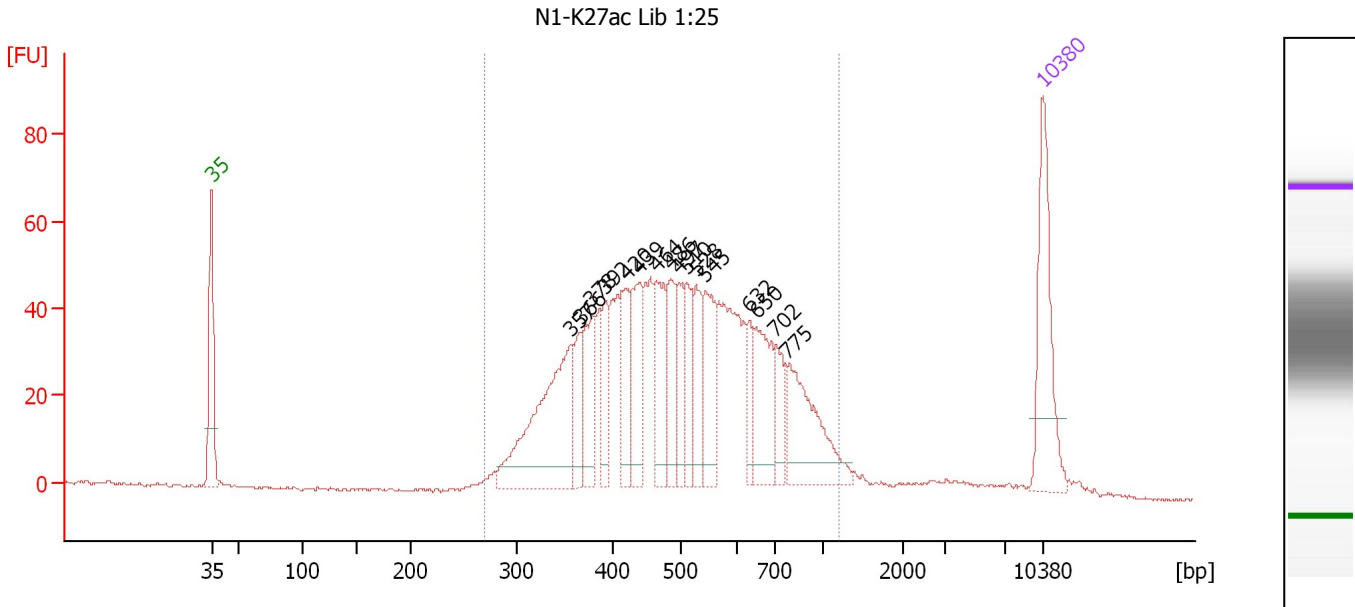
Electropherogram Summary Continued ...**... Region table for sample 4 : Input P19 RA Lib 1:20**

From [bp]	To [bp]	Average Size [bp]	Molarity [pmol/l]	Conc. [pg/μl]	Corr. Area	% of Total	Size distribution in CV [%]	Color
283	1,347	536	4,030.2	1,270.94	899.2	96	32.5	■

Assay Class: High Sensitivity DNA Assay
 Data Path: C:\...ents and Settings\Bioanalyzer\2014-02-05\2014-02-05_002.xad

Created: 2/5/2014 12:32:13 PM
 Modified: 2/5/2014 1:13:26 PM

Electropherogram Summary Continued ...



Overall Results for sample 5 : N1-K27ac Lib 1:25

Number of peaks found: 16 Corr. Area 1: 1,218.6
 Noise: 0.4

Peak table for sample 5 : N1-K27ac Lib 1:25

Peak	Aligned Migration Time [s]	Size [bp]	Conc. [pg/μl]	Molarity [pmol/l]	Observations
1	43.00	35	125.00	5,411.3	Lower Marker
2	73.29	357	183.74	778.8	
3	74.01	366	41.21	170.4	
4	74.99	378	56.61	226.6	
5	76.07	392	38.82	150.2	
6	77.87	420	54.73	197.7	
7	78.99	439	63.78	220.1	
8	80.42	464	65.73	214.6	
9	81.68	486	53.92	168.1	
10	82.31	497	39.06	119.1	
11	82.98	510	45.82	136.0	
12	83.79	528	43.77	125.7	
13	84.60	545	58.60	162.9	
14	88.23	632	24.97	59.8	
15	88.81	650	67.15	156.5	
16	90.47	702	33.03	71.3	
17	91.46	775	90.92	177.9	
18	113.00	10,380	75.00	10.9	Upper Marker

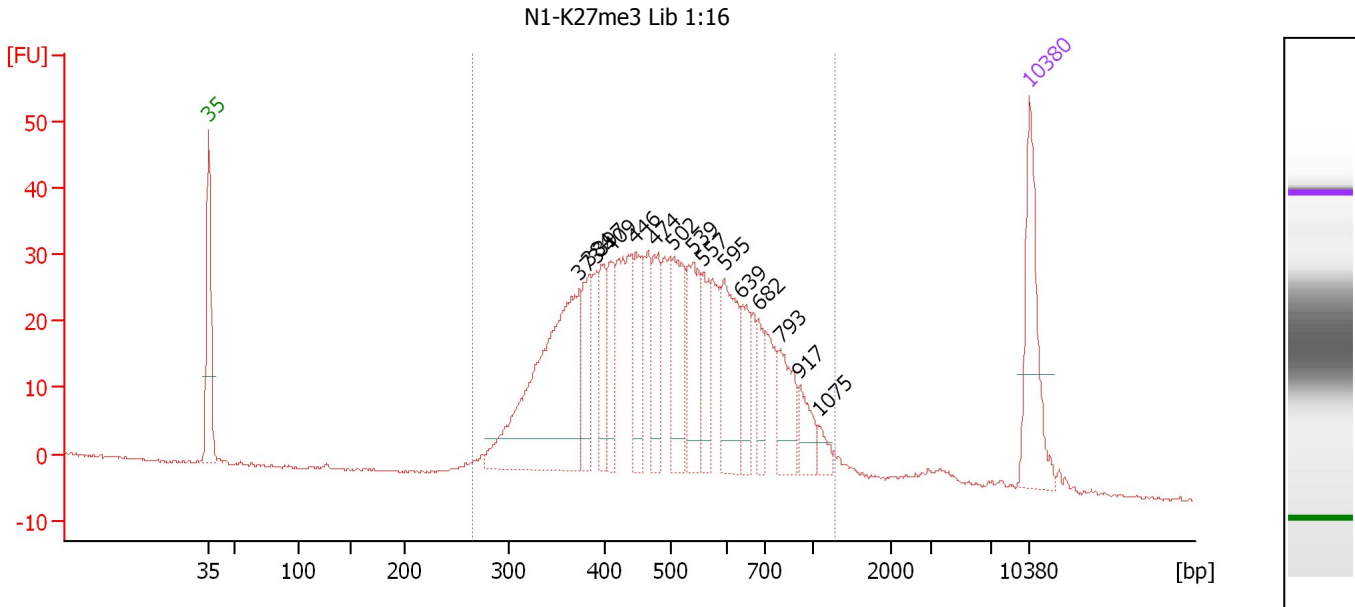
Region table for sample 5 : N1-K27ac Lib 1:25

From [bp]	To [bp]	Average Size [bp]	Molarity [pmol/l]	Conc. [pg/μl]	Corr. Area	% of Total	Size distribution in CV [%]	Color
270	1,192	522	4,239.3	1,299.04	1,218.6	95	31.5	Blue

Assay Class: High Sensitivity DNA Assay
 Data Path: C:\...ents and Settings\Bioanalyzer\2014-02-05\2014-02-05_002.xad

Created: 2/5/2014 12:32:13 PM
 Modified: 2/5/2014 1:13:26 PM

Electropherogram Summary Continued ...



Overall Results for sample 6 : N1-K27me3 Lib 1:16

Number of peaks found: 15 Corr. Area 1: 867.3
 Noise: 0.2

Peak table for sample 6 : N1-K27me3 Lib 1:16

Peak	Aligned Migration Time [s]	Size [bp]	Conc. [pg/μl]	Molarity [pmol/l]	Observations
1	43.00	35	125.00	5,411.3	Lower Marker
2	74.57	373	295.89	1,201.3	
3	75.48	384	62.58	246.7	
4	76.48	397	52.16	199.2	
5	77.25	409	45.94	170.3	
6	79.39	446	52.97	179.9	
7	80.98	474	60.84	194.6	
8	82.57	502	79.87	241.2	
9	84.30	539	76.43	215.0	
10	85.16	557	42.03	114.3	
11	86.94	595	86.72	220.8	
12	88.44	639	37.82	89.7	
13	89.85	682	30.08	66.8	
14	91.71	793	48.72	93.1	
15	93.40	917	27.63	45.7	
16	95.03	1,075	11.56	16.3	
17	113.00	10,380	75.00	10.9	Upper Marker

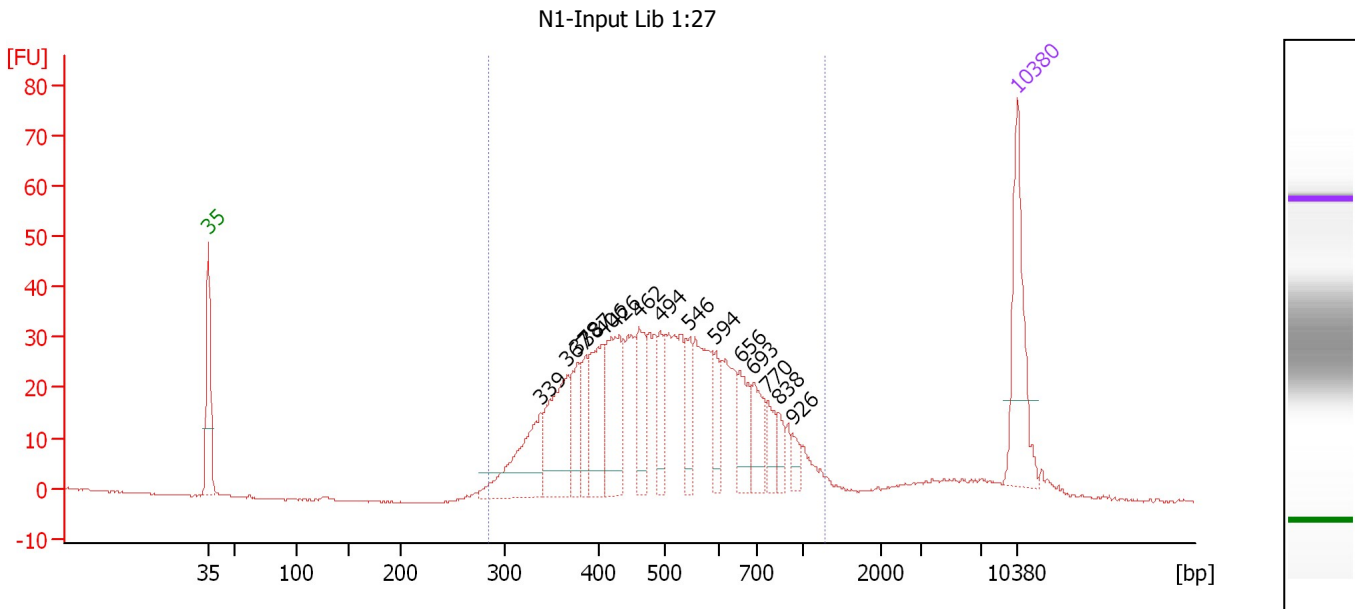
Region table for sample 6 : N1-K27me3 Lib 1:16

From [bp]	To [bp]	Average Size [bp]	Molarity [pmol/l]	Conc. [pg/μl]	Corr. Area	% of Total	Size distribution in CV [%]	Color
264	1,282	522	4,893.8	1,489.58	867.3	96	33.0	Blue

Assay Class: High Sensitivity DNA Assay
 Data Path: C:\...ents and Settings\Bioanalyzer\2014-02-05\2014-02-05_002.xad

Created: 2/5/2014 12:32:13 PM
 Modified: 2/5/2014 1:13:26 PM

Electropherogram Summary Continued ...



Overall Results for sample 7 : N1-Input Lib 1:27

Number of peaks found: 15 Corr. Area 1: 775.5
 Noise: 0.1

Peak table for sample 7 : N1-Input Lib 1:27

Peak	Aligned Migration Time [s]	Size [bp]	Conc. [pg/μl]	Molarity [pmol/l]	Observations
1	43.00	35	125.00	5,411.3	Lower Marker
2	71.75	339	96.42	431.6	
3	74.05	367	97.81	403.9	
4	74.93	378	44.06	176.7	
5	75.67	387	31.82	124.7	
6	77.10	406	78.36	292.3	
7	78.25	426	84.84	301.6	
8	80.28	462	53.50	175.6	
9	82.13	494	38.75	118.9	
10	84.62	546	32.28	89.6	
11	86.88	594	30.40	77.6	
12	89.01	656	39.56	91.4	
13	90.21	693	36.38	79.6	
14	91.40	770	21.46	42.2	
15	92.33	838	13.94	25.2	
16	93.53	926	10.89	17.8	
17	113.00	10,380	75.00	10.9	Upper Marker

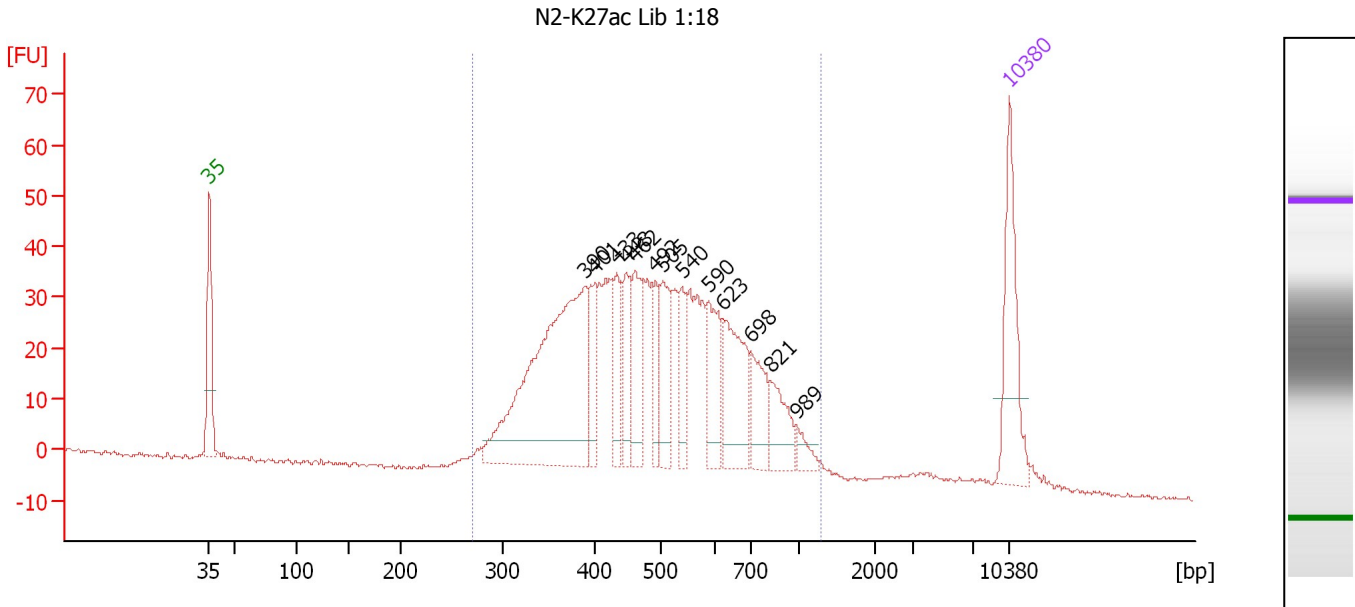
Region table for sample 7 : N1-Input Lib 1:27

From [bp]	To [bp]	Average Size [bp]	Molarity [pmol/l]	Conc. [pg/μl]	Corr. Area	% of Total	Size distribution in CV [%]	Color
284	1,272	526	3,508.9	1,090.12	775.5	94	31.5	Blue

Assay Class: High Sensitivity DNA Assay
 Data Path: C:\...ents and Settings\Bioanalyzer\2014-02-05\2014-02-05_002.xad

Created: 2/5/2014 12:32:13 PM
 Modified: 2/5/2014 1:13:26 PM

Electropherogram Summary Continued ...



Overall Results for sample 8 : N2-K27ac Lib 1:18

Number of peaks found: 13 Corr. Area 1: 986.9
 Noise: 0.4

Peak table for sample 8 : N2-K27ac Lib 1:18

Peak	Aligned Migration Time [s]	Size [bp]	Conc. [pg/μl]	Molarity [pmol/l]	Observations
1	43.00	35	125.00	5,411.3	Lower Marker
2	75.90	390	349.91	1,360.8	
3	76.79	401	42.18	159.5	
4	78.65	433	42.83	149.8	
5	79.49	448	45.84	155.1	
6	80.29	462	57.73	189.5	
7	82.01	492	37.10	114.3	
8	82.71	505	61.28	183.9	
9	84.35	540	38.70	108.7	
10	86.68	590	62.13	159.7	
11	87.94	623	90.05	218.8	
12	90.37	698	49.24	107.0	
13	92.09	821	41.09	75.8	
14	94.38	989	13.22	20.3	
15	113.00	10,380	75.00	10.9	Upper Marker

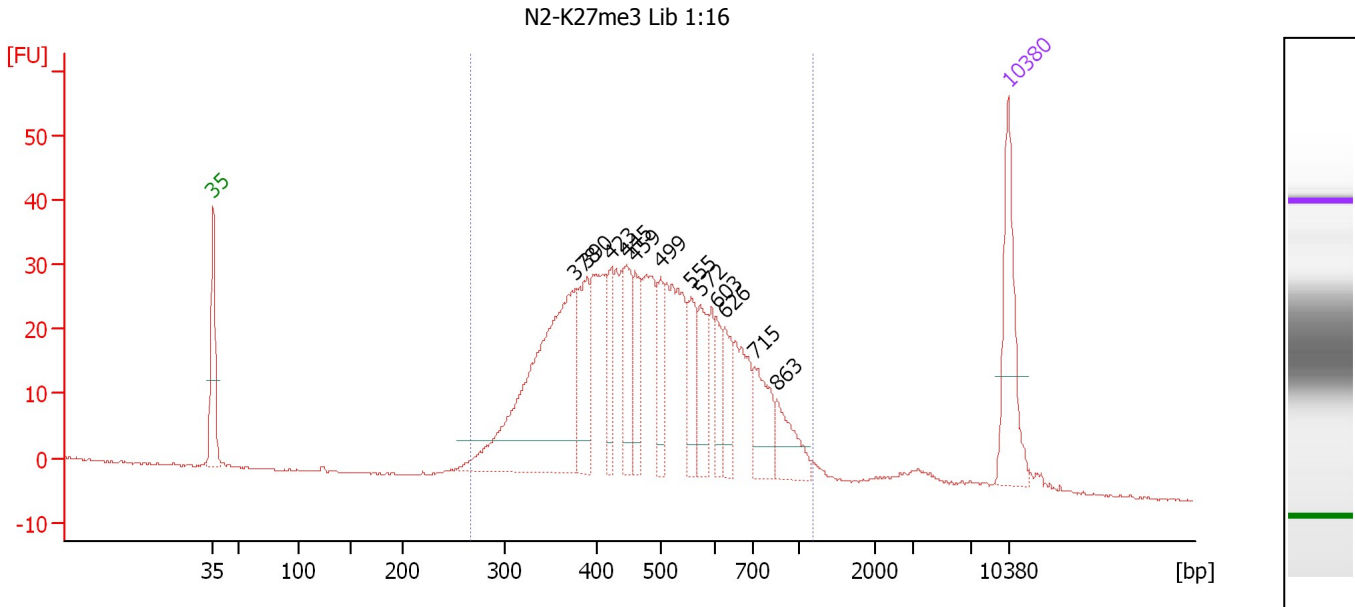
Region table for sample 8 : N2-K27ac Lib 1:18

From [bp]	To [bp]	Average Size [bp]	Molarity [pmol/l]	Conc. [pg/μl]	Corr. Area	% of Total	Size distribution in CV [%]	Color
270	1,294	514	4,484.3	1,352.17	986.9	96	32.4	Blue

Assay Class: High Sensitivity DNA Assay
 Data Path: C:\...ents and Settings\Bioanalyzer\2014-02-05\2014-02-05_002.xad

Created: 2/5/2014 12:32:13 PM
 Modified: 2/5/2014 1:13:26 PM

Electropherogram Summary Continued ...



Overall Results for sample 9 : N2-K27me3 Lib 1:16

Number of peaks found: 12 Corr. Area 1: 792.6
 Noise: 0.1

Peak table for sample 9 : N2-K27me3 Lib 1:16

Peak	Aligned Migration Time [s]	Size [bp]	Conc. [pg/μl]	Molarity [pmol/l]	Observations
1	43.00	35	125.00	5,411.3	Lower Marker
2	74.92	378	332.28	1,333.3	
3	75.91	390	79.73	310.0	
4	78.07	423	44.58	159.6	
5	79.34	445	61.38	208.9	
6	80.14	459	45.71	150.9	
7	82.44	499	40.20	122.0	
8	85.07	555	48.37	132.1	
9	85.86	572	47.54	125.9	
10	87.27	603	27.58	69.3	
11	88.02	626	37.27	90.2	
12	90.65	715	54.65	115.8	
13	92.67	863	41.26	72.4	
14	113.00	10,380	75.00	10.9	Upper Marker

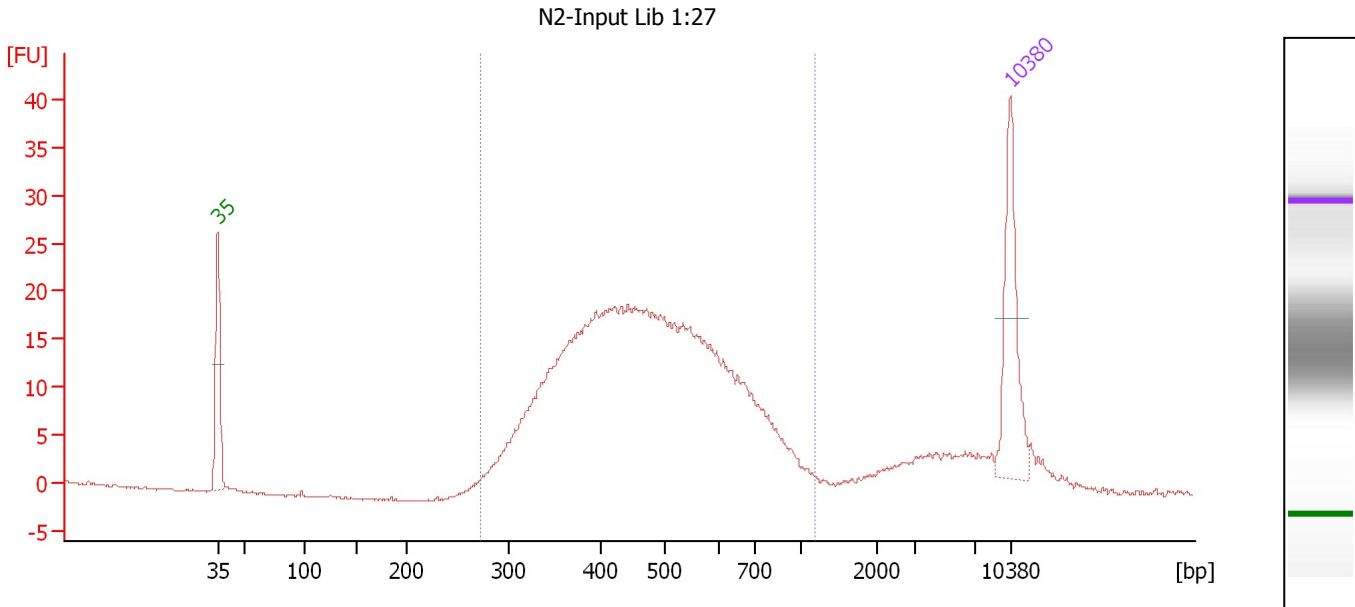
Region table for sample 9 : N2-K27me3 Lib 1:16

From [bp]	To [bp]	Average Size [bp]	Molarity [pmol/l]	Conc. [pg/μl]	Corr. Area	% of Total	Size distribution in CV [%]	Color
267	1,203	503	4,797.4	1,424.97	792.6	95	31.0	Blue

Assay Class: High Sensitivity DNA Assay
 Data Path: C:\...ents and Settings\Bioanalyzer\2014-02-05\2014-02-05_002.xad

Created: 2/5/2014 12:32:13 PM
 Modified: 2/5/2014 1:13:26 PM

Electropherogram Summary Continued ...



Overall Results for sample 10 : N2-Input Lib 1:27

Number of peaks found: 0 Corr. Area 1: 428.2
 Noise: 0.1

Peak table for sample 10 : N2-Input Lib 1:27

Peak	Aligned Migration Time [s]	Size [bp]	Conc. [pg/μl]	Molarity [pmol/l]	Observations
1	43.00	35	125.00	5,411.3	Lower Marker
2	113.00	10,380	75.00	10.9	Upper Marker

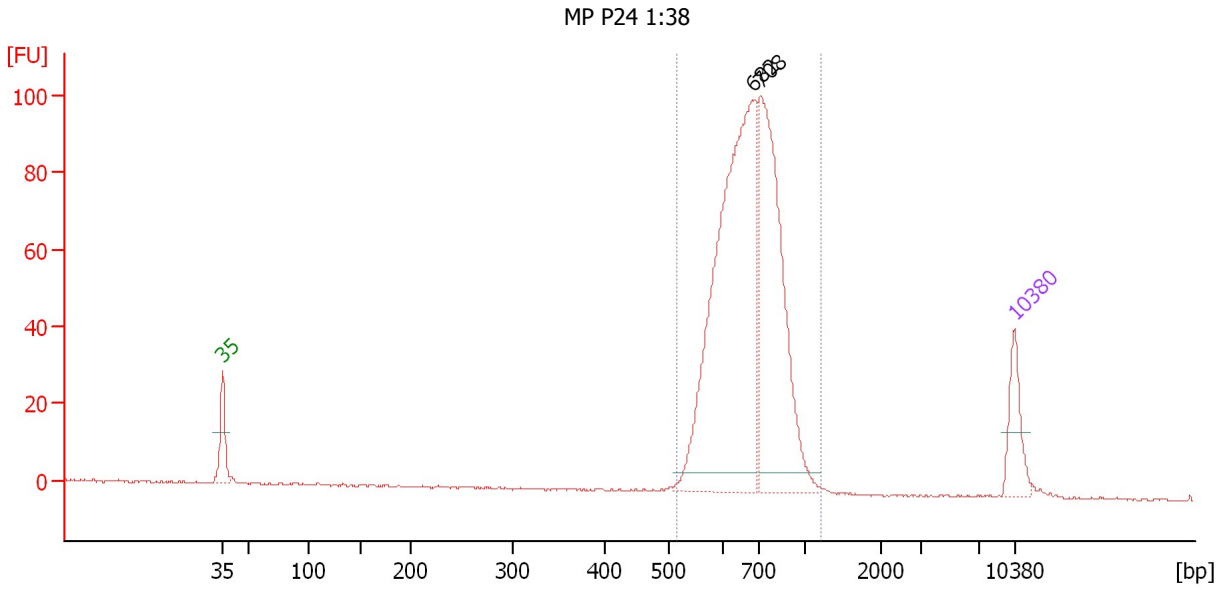
Region table for sample 10 : N2-Input Lib 1:27

From [bp]	To [bp]	Average Size [bp]	Molarity [pmol/l]	Conc. [pg/μl]	Corr. Area	% of Total	Size distribution in CV [%]	Color
272	1,176	493	3,556.6	1,050.28	428.2	91	28.7	Blue

Assay Class: High Sensitivity DNA Assay
 Data Path: C:\...ents and Settings\Bioanalyzer\2014-02-05\2014-02-05_002.xad

Created: 2/5/2014 12:32:13 PM
 Modified: 2/5/2014 1:13:26 PM

Electropherogram Summary Continued ...



Overall Results for sample 11 : MP P24 1:38

Number of peaks found: 2 Corr. Area 1: 742.0
 Noise: 0.3

Peak table for sample 11 : MP P24 1:38

Peak	Aligned Migration Time [s]	Size [bp]	Conc. [pg/μl]	Molarity [pmol/l]	Observations
1	43.00	35	125.00	5,411.3	Lower Marker
2	89.86	682	1,010.44	2,245.0	
3	90.56	708	627.60	1,342.2	
4	113.00	10,380	75.00	10.9	Upper Marker

Region table for sample 11 : MP P24 1:38

From [bp]	To [bp]	Average Size [bp]	Molarity [pmol/l]	Conc. [pg/μl]	Corr. Area	% of Total	Size distribution in CV [%]	Color
515	1,190	693	3,658.1	1,637.49	742.0	99	14.9	Blue

Assay Class: High Sensitivity DNA Assay
Data Path: C:\...ents and Settings\Bioanalyzer\2014-02-05\2014-02-05_002.xad

Created: 2/5/2014 12:32:13 PM
Modified: 2/5/2014 1:13:26 PM

Gel Image

