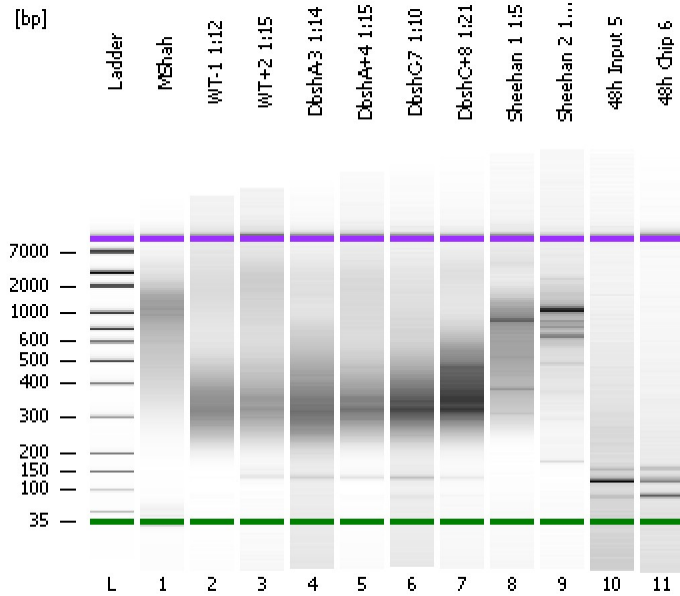


Assay Class: High Sensitivity DNA Assay
Data Path: C:\...ents and Settings\Bioanalyzer\2014-02-05\2014-02-05_003.xad

Created: 2/5/2014 1:25:01 PM
Modified: 2/5/2014 2:17:01 PM

Electrophoresis File Run Summary



Instrument Information:

Instrument Name: DE13701086 Firmware: C.01.069
Serial#: DE13701086 Type: G2938B

Assay Information:

Assay Origin Path: C:\Program Files\Agilent\2100 bioanalyzer\2100 expert\assays\dsDNA\High Sensitivity DNA.xsy
Assay Class: High Sensitivity DNA Assay
Version: 1.03
Assay Comments: Copyright © 2003-2010 Agilent Technologies

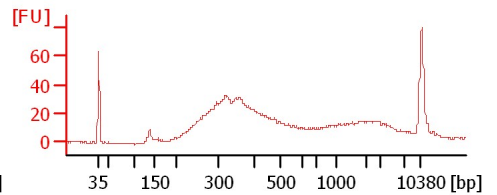
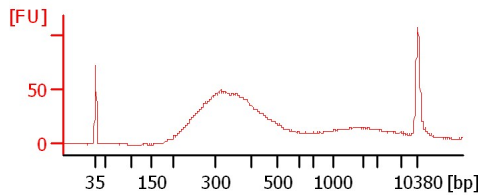
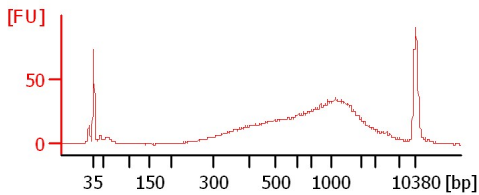
Chip Information:

Chip Lot #:
Reagent Kit Lot #:
Chip Comments:

MShah

WT-1 1:12

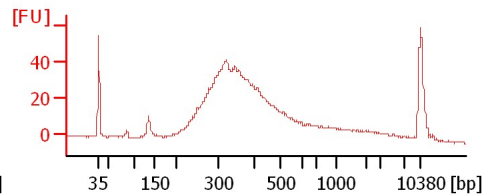
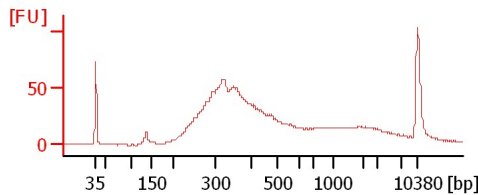
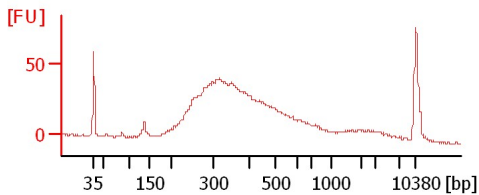
WT+2 1:15



DbshA-3 1:14

DbshA+4 1:15

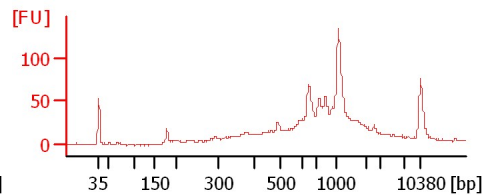
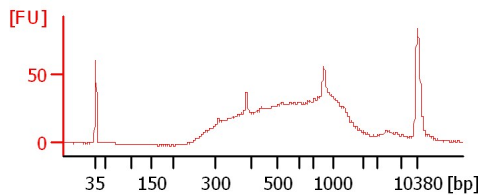
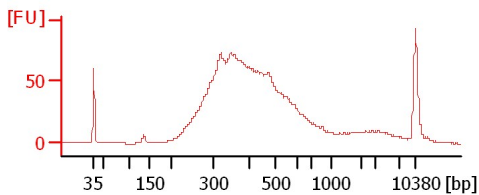
DbshC-7 1:10



DbshC+8 1:21

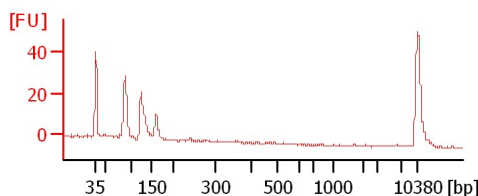
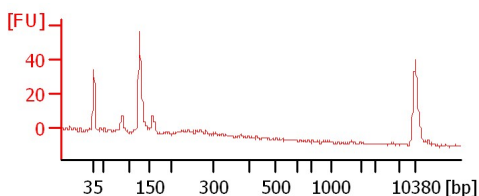
Sheehan 1 1:5

Sheehan 2 1:10



48h Input 5

48h Chip 6



Assay Class: High Sensitivity DNA Assay
 Data Path: C:\...ents and Settings\Bioanalyzer\2014-02-05\2014-02-05_003.xad

Created: 2/5/2014 1:25:01 PM
 Modified: 2/5/2014 2:17:01 PM

Electrophoresis File Run Summary (Chip Summary)

Sample Name	Sample Comment	Rest. Digest	Status	Observation	Result Label	Result Color
MShah		<input type="checkbox"/>	✓			
WT-1 1:12		<input type="checkbox"/>	✓			
WT+2 1:15		<input type="checkbox"/>	✓			
DbshA-3 1:14		<input type="checkbox"/>	✓			
DbshA+4 1:15		<input type="checkbox"/>	✓			
DbshC-7 1:10		<input type="checkbox"/>	✓			
DbshC+8 1:21		<input type="checkbox"/>	✓			
Sheehan 1 1:5		<input type="checkbox"/>	✓			
Sheehan 2 1:10		<input type="checkbox"/>	✓			
48h Input 5		<input type="checkbox"/>	✓			
48h Chip 6		<input type="checkbox"/>	✓			
Ladder		<input type="checkbox"/>	✓			

Chip Lot #

Reagent Kit Lot #

Chip Comments :

Assay Class: High Sensitivity DNA Assay
 Data Path: C:\...ents and Settings\Bioanalyzer\2014-02-05\2014-02-05_003.xad

Created: 2/5/2014 1:25:01 PM
 Modified: 2/5/2014 2:17:01 PM

Electrophoresis Assay Details

General Analysis Settings

Number of Available Sample and Ladder Wells (Max.) : 12
 Minimum Visible Range [s] : 32
 Maximum Visible Range [s] : 138
 Start Analysis Time Range [s] : 33
 End Analysis Time Range [s] : 137.5
 Ladder Concentration [pg/μl] : 1950
 Uses Standard Area for Ladder Fragments
 Lower Marker Concentration [pg/μl] : 125
 Upper Marker Concentration [pg/μl] : 75
 Used Upper Marker for Quantitation
 Standard Curve Fit is Point to Point
 Show Data Aligned to Lower and Upper Marker

Integrator Settings

Integration Start Time [s] : 33.05
 Integration End Time [s] : 137
 Slope Threshold : 0.8
 Height Threshold [FU] : 5
 Area Threshold : 0.1
 Width Threshold [s] : 0.6
 Baseline Plateau [s] : 0.5

Filter Settings

Filter Width [s] : 0.5
 Polynomial Order : 4

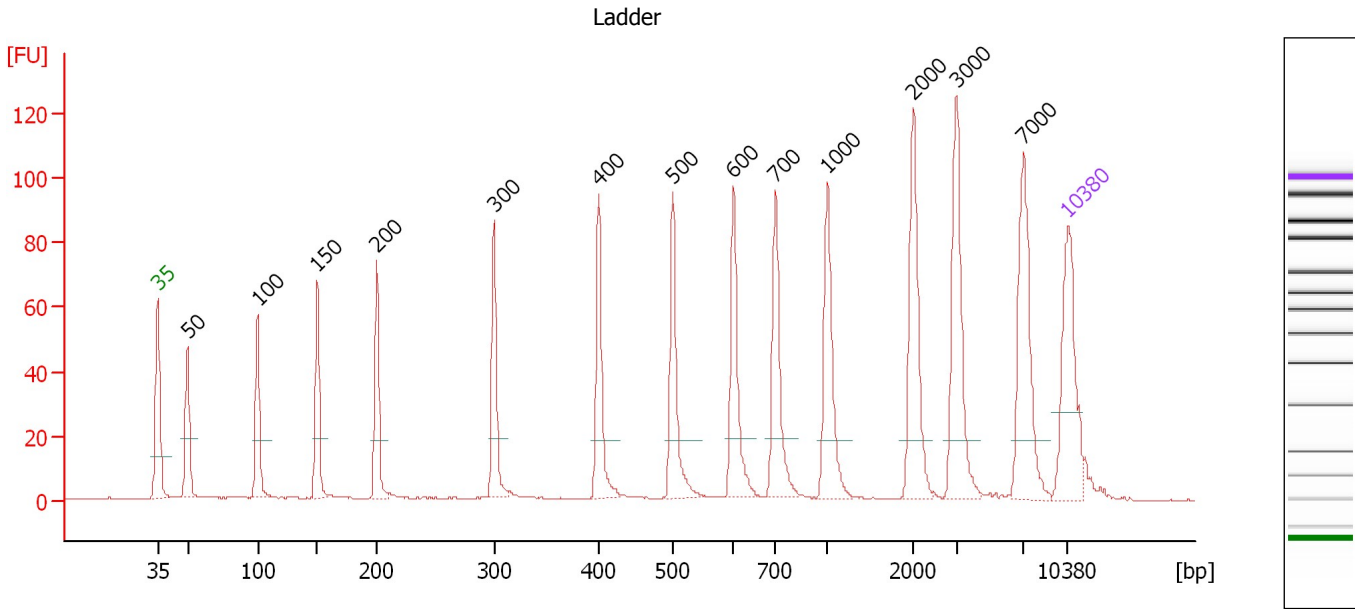
Ladder

Ladder Peak	Size	Area
1	35	160
2	50	210
3	100	208
4	150	221
5	200	242
6	300	270
7	400	305
8	500	306
9	600	336
10	700	321
11	1000	366
12	2000	413
13	3000	411
14	7000	400
15	10380	214

Assay Class: High Sensitivity DNA Assay
 Data Path: C:\...ents and Settings\Bioanalyzer\2014-02-05\2014-02-05_003.xad

Created: 2/5/2014 1:25:01 PM
 Modified: 2/5/2014 2:17:01 PM

Electropherogram Summary



Overall Results for Ladder

Noise: 0.1

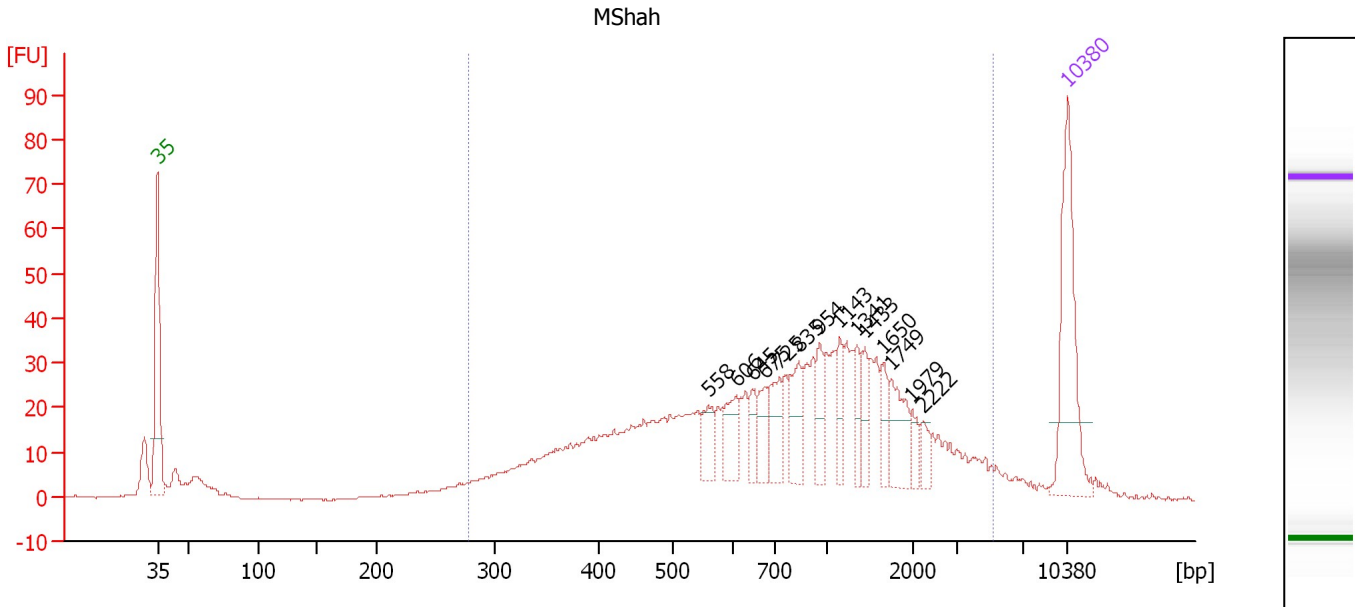
Peak table for Ladder

Peak	Aligned Migration Time [s]	Size [bp]	Conc. [pg/μl]	Molarity [pmol/l]	Observations
1	43.00	35	125.00	5,411.3	Lower Marker
2	45.30	50	150.00	4,545.5	Ladder Peak
3	50.69	100	150.00	2,272.7	Ladder Peak
4	55.30	150	150.00	1,515.2	Ladder Peak
5	59.86	200	150.00	1,136.4	Ladder Peak
6	68.85	300	150.00	757.6	Ladder Peak
7	76.94	400	150.00	568.2	Ladder Peak
8	82.63	500	150.00	454.5	Ladder Peak
9	87.32	600	150.00	378.8	Ladder Peak
10	90.49	700	150.00	324.7	Ladder Peak
11	94.53	1,000	150.00	227.3	Ladder Peak
12	101.14	2,000	150.00	113.6	Ladder Peak
13	104.44	3,000	150.00	75.8	Ladder Peak
14	109.61	7,000	150.00	32.5	Ladder Peak
15	113.00	10,380	75.00	10.9	Upper Marker

Assay Class: High Sensitivity DNA Assay
 Data Path: C:\...ents and Settings\Bioanalyzer\2014-02-05\2014-02-05_003.xad

Created: 2/5/2014 1:25:01 PM
 Modified: 2/5/2014 2:17:01 PM

Electropherogram Summary Continued ...



Setpoint Deviations for sample 1 : MShah

Height Threshold [FU] : 15

Overall Results for sample 1 : MShah

Number of peaks found: 14 Corr. Area 1: 859.6
 Noise: 0.2

Peak table for sample 1 : MShah

Peak	Aligned Migration Time [s]	Size [bp]	Conc. [pg/μl]	Molarity [pmol/l]	Observations
1	43.00	35	125.00	5,411.3	Lower Marker
2	85.35	558	21.62	58.7	
3	87.52	606	28.65	71.6	
4	88.74	645	16.17	38.0	
5	89.70	675	21.28	47.8	
6	90.83	725	29.87	62.4	
7	92.30	835	32.94	59.8	
8	93.91	954	20.98	33.3	
9	95.48	1,143	18.13	24.0	
10	96.78	1,341	16.86	19.1	
11	97.39	1,433	16.21	17.1	
12	98.83	1,650	15.67	14.4	
13	99.48	1,749	30.47	26.4	
14	101.00	1,979	10.32	7.9	
15	101.87	2,222	9.43	6.4	
16	113.00	10,380	75.00	10.9	Upper Marker

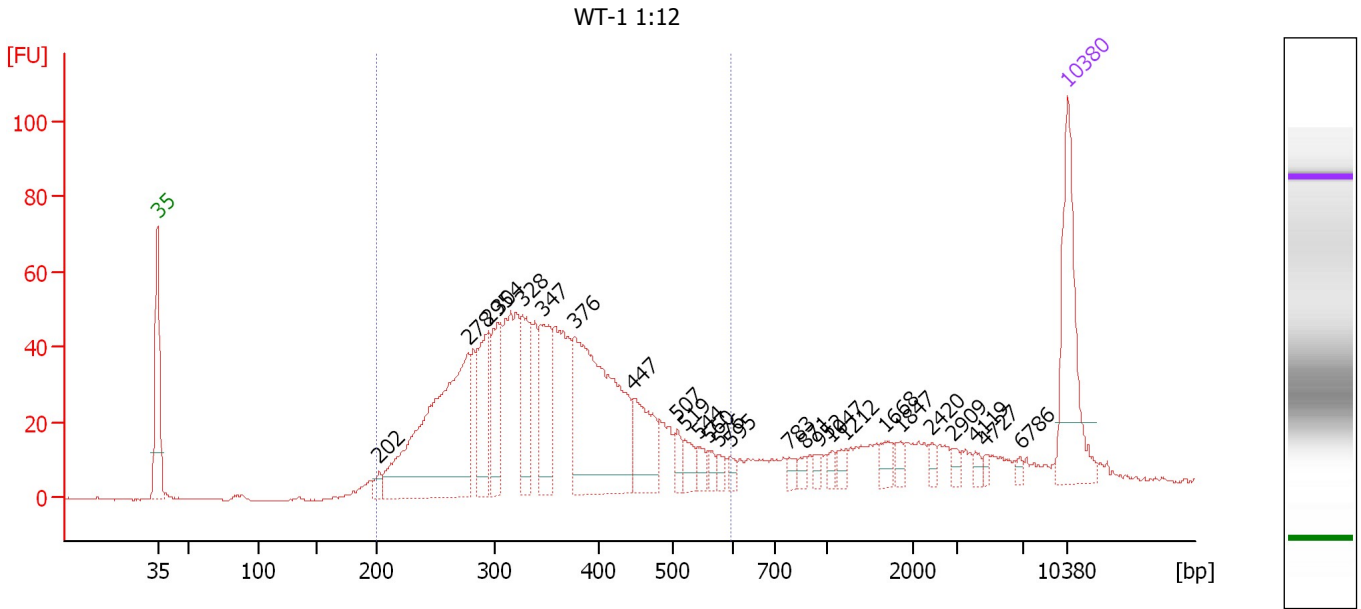
Region table for sample 1 : MShah

From [bp]	To [bp]	Average Size [bp]	Molarity [pmol/l]	Conc. [pg/μl]	Corr. Area	% of Total	Size distribution in CV [%]	Color
279	5,159	1,058	2,134.3	888.15	859.6	89	77.1	Blue

Assay Class: High Sensitivity DNA Assay
 Data Path: C:\...ents and Settings\Bioanalyzer\2014-02-05\2014-02-05_003.xad

Created: 2/5/2014 1:25:01 PM
 Modified: 2/5/2014 2:17:01 PM

Electropherogram Summary Continued ...



Overall Results for sample 2 : WT-1 1:12

Number of peaks found: 26 Corr. Area 1: 1,065.2
 Noise: 0.3

Peak table for sample 2 : WT-1 1:12

Peak	Aligned Migration Time [s]	Size [bp]	Conc. [pg/μl]	Molarity [pmol/l]	Observations
1	43.00	35	125.00	5,411.3	Lower Marker
2	60.06	202	9.10	68.2	
3	66.87	278	254.19	1,385.6	
4	68.40	295	65.96	338.9	
5	69.18	304	60.77	302.8	
6	71.10	328	63.00	291.2	
7	72.68	347	72.14	314.7	
8	75.03	376	212.41	854.9	
9	79.61	447	55.85	189.3	
10	82.98	507	12.69	37.9	
11	83.54	519	15.69	45.8	
12	84.68	544	8.92	24.9	
13	85.46	560	7.37	19.9	
14	86.20	576	6.12	16.1	
15	87.08	595	6.66	17.0	
16	91.62	783	5.75	11.1	
17	92.79	871	5.57	9.7	
18	93.89	952	5.04	8.0	
19	94.85	1,047	5.88	8.5	
20	95.94	1,212	7.14	8.9	
21	98.95	1,668	9.67	8.8	
22	100.13	1,847	7.04	5.8	
23	102.53	2,420	4.60	2.9	
24	104.14	2,909	5.45	2.8	
25	105.89	4,119	4.12	1.5	

Assay Class: High Sensitivity DNA Assay
 Data Path: C:\...ents and Settings\Bioanalyzer\2014-02-05\2014-02-05_003.xad


Created: 2/5/2014 1:25:01 PM
 Modified: 2/5/2014 2:17:01 PM

Electropherogram Summary Continued ...

... Peak table for sample 2 : WT-1 1:12

Peak	Aligned Migration Time [s]	Size [bp]	Conc. [pg/ μ l]	Molarity [pmol/l]	Observations
26	106.67	4,727	3.21	1.0	
27	109.33	6,786	3.22	0.7	
28	113.00	10,380	75.00	10.9	Upper Marker

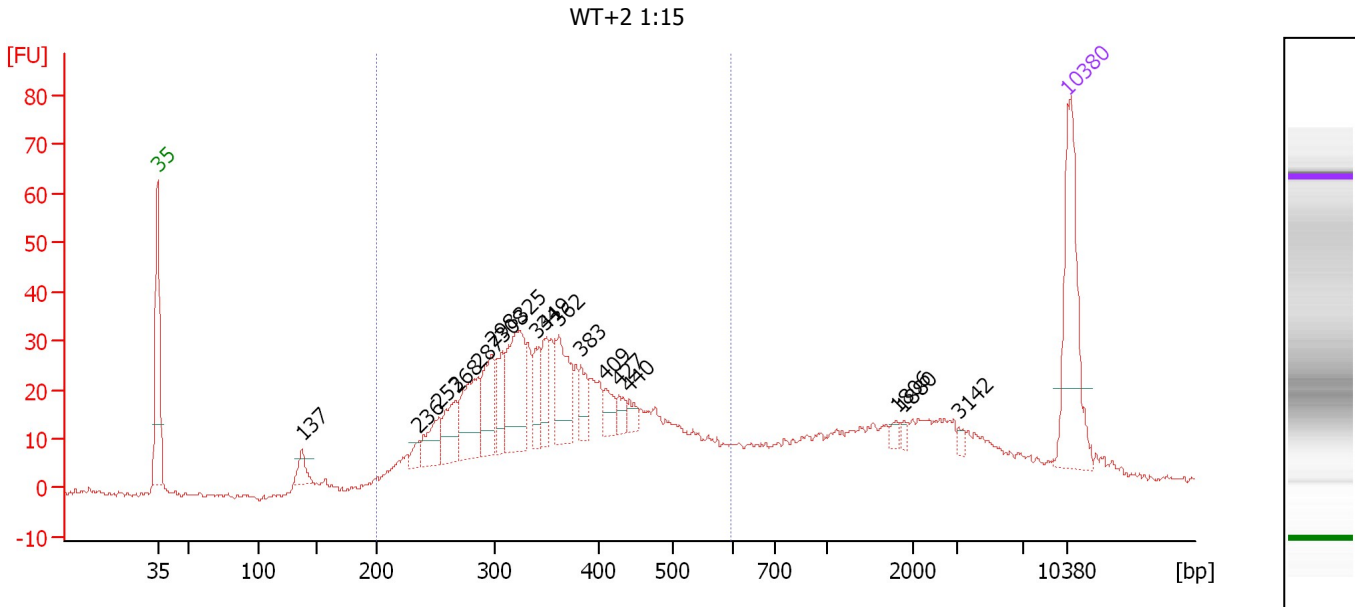
Region table for sample 2 : WT-1 1:12

From [bp]	To [bp]	Average Size [bp]	Molarity [pmol/l]	Conc. [pg/ μ l]	Corr. Area	% of Total	Size distribution in CV [%]	Color
200	596	355	5,108.2	1,109.82	1,065.2	81	23.4	

Assay Class: High Sensitivity DNA Assay
 Data Path: C:\...ents and Settings\Bioanalyzer\2014-02-05\2014-02-05_003.xad

Created: 2/5/2014 1:25:01 PM
 Modified: 2/5/2014 2:17:01 PM

Electropherogram Summary Continued ...



Overall Results for sample 3 : WT+2 1:15

Number of peaks found: 18 Corr. Area 1: 657.4
 Noise: 0.6

Peak table for sample 3 : WT+2 1:15

Peak	Aligned Migration Time [s]	Size [bp]	Conc. [pg/μl]	Molarity [pmol/l]	Observations
1	43.00	35	125.00	5,411.3	Lower Marker
2	54.09	137	16.62	183.8	
3	63.14	236	9.22	59.1	
4	64.61	253	29.97	179.6	
5	65.95	268	34.81	197.0	
6	67.64	287	56.69	299.8	
7	68.71	298	48.20	244.7	
8	69.51	308	31.30	153.9	
9	70.89	325	76.79	357.7	
10	72.14	341	23.39	104.0	
11	72.81	349	24.52	106.5	
12	73.88	362	51.16	214.0	
13	75.57	383	19.25	76.1	
14	77.44	409	14.41	53.4	
15	78.47	427	10.21	36.2	
16	79.23	440	9.42	32.4	
17	99.86	1,806	4.02	3.4	
18	100.35	1,880	3.23	2.6	
19	104.62	3,142	3.03	1.5	
20	113.00	10,380	75.00	10.9	Upper Marker

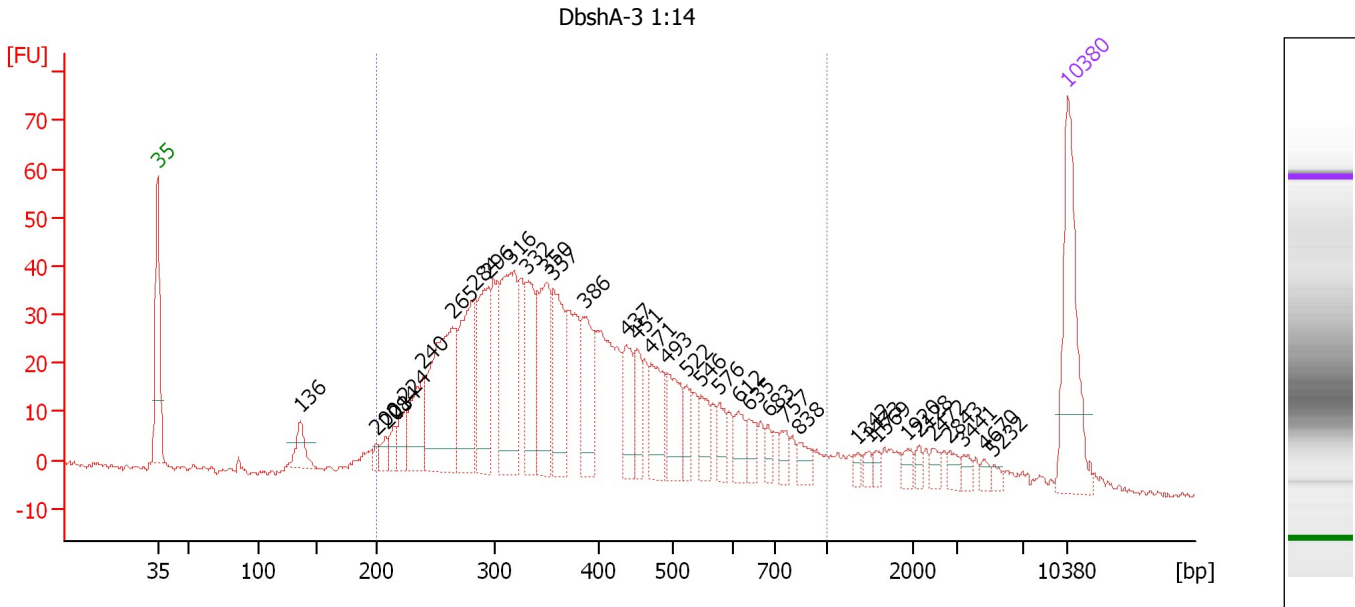
Region table for sample 3 : WT+2 1:15

From [bp]	To [bp]	Average Size [bp]	Molarity [pmol/l]	Conc. [pg/μl]	Corr. Area	% of Total	Size distribution in CV [%]	Color
200	595	365	4,129.2	921.32	657.4	72	23.7	Blue

Assay Class: High Sensitivity DNA Assay
 Data Path: C:\...ents and Settings\Bioanalyzer\2014-02-05\2014-02-05_003.xad

Created: 2/5/2014 1:25:01 PM
 Modified: 2/5/2014 2:17:01 PM

Electropherogram Summary Continued ...



Overall Results for sample 4 : DbshA-3 1:14

Number of peaks found: 36 Corr. Area 1: 1,133.6
 Noise: 0.8

Peak table for sample 4 : DbshA-3 1:14

Peak	Aligned Migration Time [s]	Size [bp]	Conc. [pg/μl]	Molarity [pmol/l]	Observations
1	43.00	35	125.00	5,411.3	Lower Marker
2	53.99	136	24.83	277.1	
3	59.84	200	7.38	55.9	
4	60.57	208	10.60	77.2	
5	61.16	214	12.13	85.7	
6	62.02	224	20.95	141.7	
7	63.43	240	54.78	346.3	
8	65.70	265	139.69	798.9	
9	67.38	284	95.01	507.6	
10	68.47	296	80.35	411.7	
11	70.15	316	123.38	591.6	
12	71.46	332	63.49	289.5	
13	72.92	350	72.84	315.1	
14	73.46	357	70.56	299.5	
15	75.78	386	53.10	208.6	
16	79.04	437	37.77	130.9	
17	79.86	451	27.27	91.5	
18	80.95	471	44.28	142.6	
19	82.22	493	37.96	116.7	
20	83.67	522	17.53	50.9	
21	84.81	546	20.18	56.0	
22	86.22	576	16.42	43.2	
23	87.71	612	16.90	41.8	
24	88.44	635	14.14	33.7	
25	89.94	683	8.63	19.2	

Assay Class: High Sensitivity DNA Assay
 Data Path: C:\...ents and Settings\Bioanalyzer\2014-02-05\2014-02-05_003.xad


Created: 2/5/2014 1:25:01 PM
 Modified: 2/5/2014 2:17:01 PM

Electropherogram Summary Continued ...

... Peak table for sample 4 : DbshA-3 1:14

Peak	Aligned Migration Time [s]	Size [bp]	Conc. [pg/μl]	Molarity [pmol/l]	Observations
26	91.26	757	10.71	21.4	
27	92.35	838	11.57	20.9	
28	96.79	1,342	4.55	5.1	
29	97.66	1,473	4.98	5.1	
30	98.29	1,569	4.46	4.3	
31	100.61	1,920	6.66	5.3	
32	101.56	2,128	4.90	3.5	
33	102.70	2,472	5.73	3.5	
34	103.92	2,843	6.71	3.6	
35	105.01	3,441	5.68	2.5	
36	106.60	4,670	4.10	1.3	
37	107.33	5,232	3.62	1.0	
38	113.00	10,380	75.00	10.9	Upper Marker

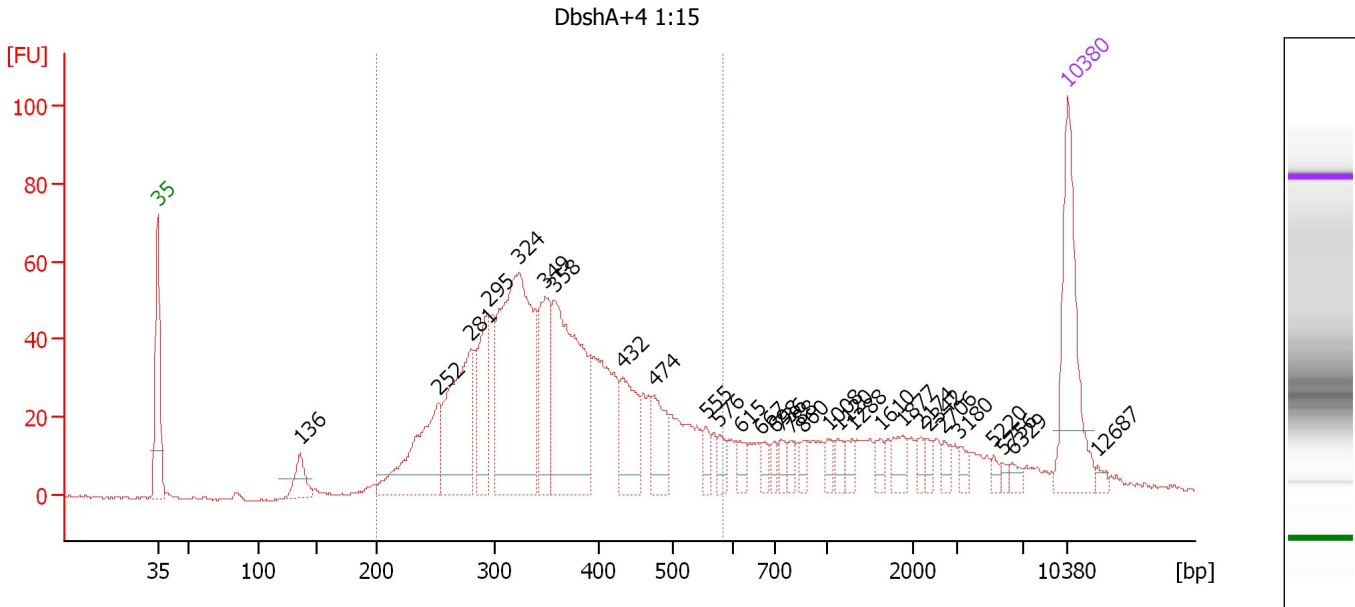
Region table for sample 4 : DbshA-3 1:14

From [bp]	To [bp]	Average Size [bp]	Molarity [pmol/l]	Conc. [pg/μl]	Corr. Area	% of Total	Size distribution in CV [%]	Color
200	1,000	399	6,360.3	1,449.35	1,133.6	88	35.8	

Assay Class: High Sensitivity DNA Assay
 Data Path: C:\...ents and Settings\Bioanalyzer\2014-02-05\2014-02-05_003.xad

Created: 2/5/2014 1:25:01 PM
 Modified: 2/5/2014 2:17:01 PM

Electropherogram Summary Continued ...



Overall Results for sample 5 : DbshA+4 1:15

Number of peaks found: 30 Corr. Area 1: 1,114.4
 Noise: 0.4

Peak table for sample 5 : DbshA+4 1:15

Peak	Aligned Migration Time [s]	Size [bp]	Conc. [pg/μl]	Molarity [pmol/l]	Observations
1	43.00	35	125.00	5,411.3	Lower Marker
2	53.96	136	27.15	303.4	
3	64.56	252	101.45	609.3	
4	67.15	281	121.73	656.2	
5	68.40	295	71.02	364.8	
6	70.76	324	240.20	1,124.7	
7	72.84	349	73.11	317.1	
8	73.54	358	174.03	736.7	
9	78.76	432	52.60	184.4	
10	81.17	474	35.92	114.7	
11	85.19	555	11.17	30.5	
12	86.21	576	9.65	25.4	
13	87.79	615	10.24	25.2	
14	89.45	667	8.36	19.0	
15	90.42	698	7.81	17.0	
16	90.98	736	8.47	17.4	
17	91.67	788	7.59	14.6	
18	92.64	860	7.30	12.9	
19	94.59	1,008	7.39	11.1	
20	95.33	1,120	8.25	11.2	
21	96.44	1,288	8.95	10.5	
22	98.57	1,610	7.52	7.1	
23	100.32	1,877	13.14	10.6	
24	101.71	2,174	5.82	4.1	
25	102.27	2,342	5.72	3.7	

Assay Class: High Sensitivity DNA Assay
 Data Path: C:\...ents and Settings\Bioanalyzer\2014-02-05\2014-02-05_003.xad


Created: 2/5/2014 1:25:01 PM
 Modified: 2/5/2014 2:17:01 PM

Electropherogram Summary Continued ...

... Peak table for sample 5 : DbshA+4 1:15

Peak	Aligned Migration Time [s]	Size [bp]	Conc. [pg/μl]	Molarity [pmol/l]	Observations
26	103.47	2,706	6.40	3.6	
27	104.67	3,180	6.29	3.0	
28	107.31	5,220	4.12	1.2	
29	108.00	5,756	3.25	0.9	
30	108.74	6,329	4.65	1.1	
31	113.00	10,380	75.00	10.9	Upper Marker
32	115.31	12,687	0.00	0.0	

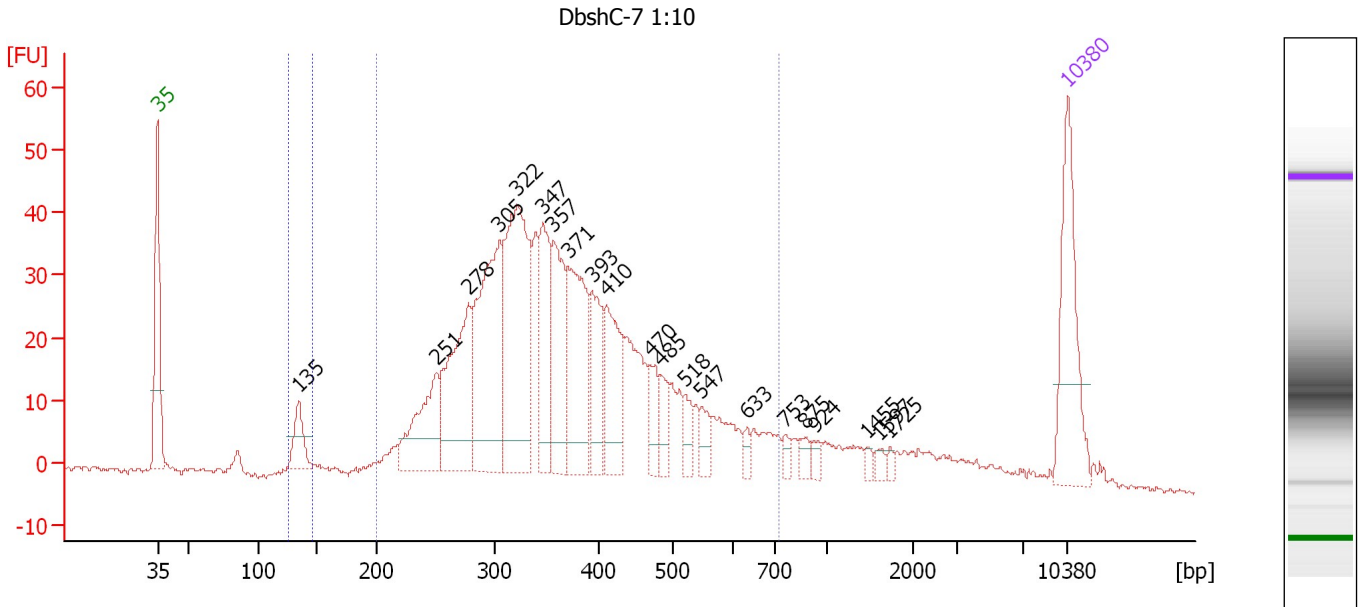
Region table for sample 5 : DbshA+4 1:15

From [bp]	To [bp]	Average Size [bp]	Molarity [pmol/l]	Conc. [pg/μl]	Corr. Area	% of Total	Size distribution in CV [%]	Color
200	583	362	4,996.1	1,109.95	1,114.4	75	23.2	

Assay Class: High Sensitivity DNA Assay
 Data Path: C:\...ents and Settings\Bioanalyzer\2014-02-05\2014-02-05_003.xad

Created: 2/5/2014 1:25:01 PM
 Modified: 2/5/2014 2:17:01 PM

Electropherogram Summary Continued ...



Overall Results for sample 6 : DbshC-7 1:10

Number of peaks found: 21 Corr. Area 1: 888.3
 Noise: 0.5 Corr. Area 2: 18.2

Peak table for sample 6 : DbshC-7 1:10



Peak	Aligned Migration Time [s]	Size [bp]	Conc. [pg/μl]	Molarity [pmol/l]	Observations
1	43.00	35	125.00	5,411.3	Lower Marker
2	53.87	135	34.69	390.7	
3	64.46	251	84.99	512.7	
4	66.90	278	132.97	724.1	
5	69.29	305	183.51	910.6	
6	70.64	322	200.94	945.1	
7	72.66	347	79.34	346.3	
8	73.46	357	88.80	377.0	
9	74.58	371	107.72	440.1	
10	76.41	393	52.20	201.0	
11	77.48	410	67.10	248.2	
12	80.90	470	23.93	77.2	
13	81.75	485	21.31	66.6	
14	83.48	518	16.24	47.5	
15	84.84	547	14.99	41.5	
16	88.35	633	7.24	17.3	
17	91.21	753	6.77	13.6	
18	92.85	875	7.73	13.4	
19	93.51	924	6.69	11.0	
20	97.54	1,455	3.74	3.9	
21	98.48	1,597	5.07	4.8	
22	99.32	1,725	3.46	3.0	
23	113.00	10,380	75.00	10.9	Upper Marker

Assay Class: High Sensitivity DNA Assay
Data Path: C:\...ents and Settings\Bioanalyzer\2014-02-05\2014-02-05_003.xad

Created: 2/5/2014 1:25:01 PM
Modified: 2/5/2014 2:17:01 PM

Electropherogram Summary Continued ...

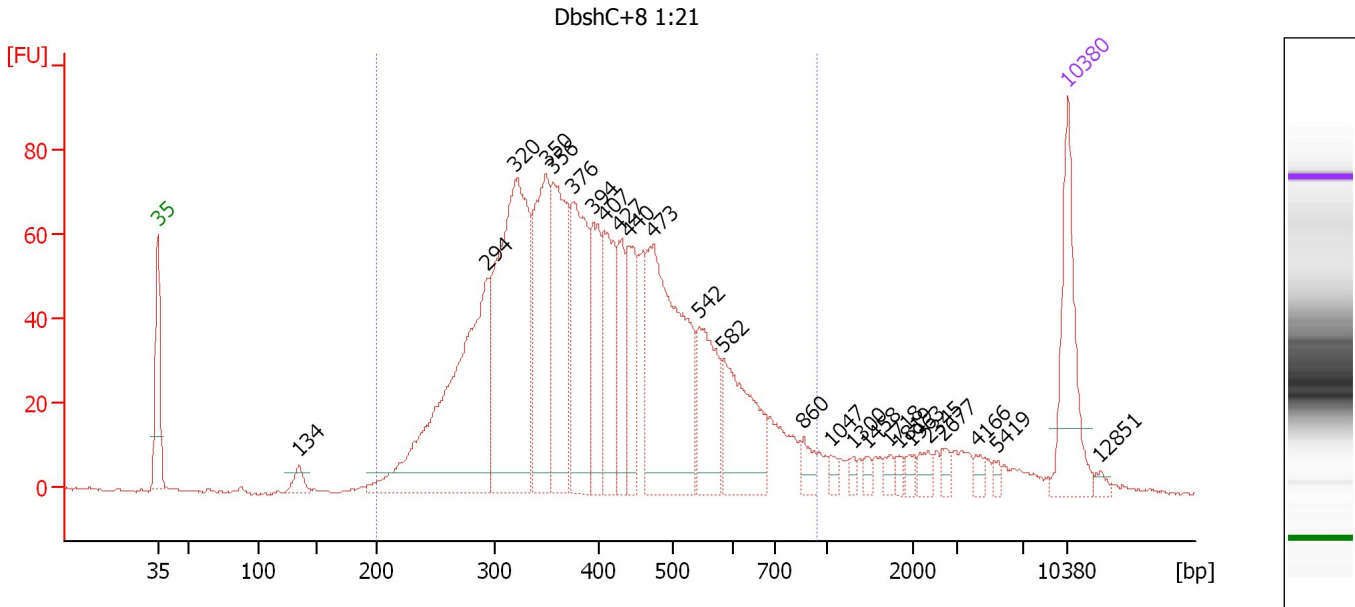
... Region table for sample 6 : DbshC-7 1:10

From [bp]	To [bp]	Average Size [bp]	Molarity [pmol/l]	Conc. [pg/μl]	Corr. Area	% of Total	Size distribution in CV [%]	Color
126	145	135	424.8	37.73	18.2	2	3.0	
200	721	379	6,115.2	1,394.41	888.3	85	27.0	

Assay Class: High Sensitivity DNA Assay
 Data Path: C:\...ents and Settings\Bioanalyzer\2014-02-05\2014-02-05_003.xad

Created: 2/5/2014 1:25:01 PM
 Modified: 2/5/2014 2:17:01 PM

Electropherogram Summary Continued ...



Overall Results for sample 7 : DbshC+8 1:21

Number of peaks found: 25 Corr. Area 1: 1,802.0
 Noise: 0.3

Peak table for sample 7 : DbshC+8 1:21

Peak	Aligned Migration Time [s]	Size [bp]	Conc. [pg/μl]	Molarity [pmol/l]	Observations
1	43.00	35	125.00	5,411.3	Lower Marker
2	53.86	134	17.00	191.6	
3	68.35	294	337.36	1,736.2	
4	70.49	320	342.00	1,617.8	
5	72.88	350	162.69	704.7	
6	73.40	356	159.29	677.4	
7	74.97	376	151.74	611.9	
8	76.45	394	82.13	315.8	
9	77.36	407	98.00	364.5	
10	78.45	427	54.95	195.1	
11	79.22	440	72.27	248.8	
12	81.07	473	252.15	808.2	
13	84.60	542	86.19	240.9	
14	86.46	582	102.12	266.0	
15	92.65	860	15.42	27.2	
16	94.84	1,047	6.99	10.1	
17	96.51	1,300	4.91	5.7	
18	97.56	1,458	5.23	5.4	
19	99.28	1,718	6.31	5.6	
20	99.94	1,819	4.73	3.9	
21	100.90	1,963	6.17	4.8	
22	102.28	2,345	9.79	6.3	
23	103.37	2,677	6.84	3.9	
24	105.95	4,166	5.93	2.2	
25	107.57	5,419	4.07	1.1	

Assay Class: High Sensitivity DNA Assay
 Data Path: C:\...ents and Settings\Bioanalyzer\2014-02-05\2014-02-05_003.xad


Created: 2/5/2014 1:25:01 PM
 Modified: 2/5/2014 2:17:01 PM

Electropherogram Summary Continued ...

... Peak table for sample 7 : DbshC+8 1:21

Peak	Aligned Migration Time [s]	Size [bp]	Conc. [pg/μl]	Molarity [pmol/l]	Observations
26	113.00	10,380	75.00	10.9	Upper Marker
27	115.48	12,851	0.00	0.0	

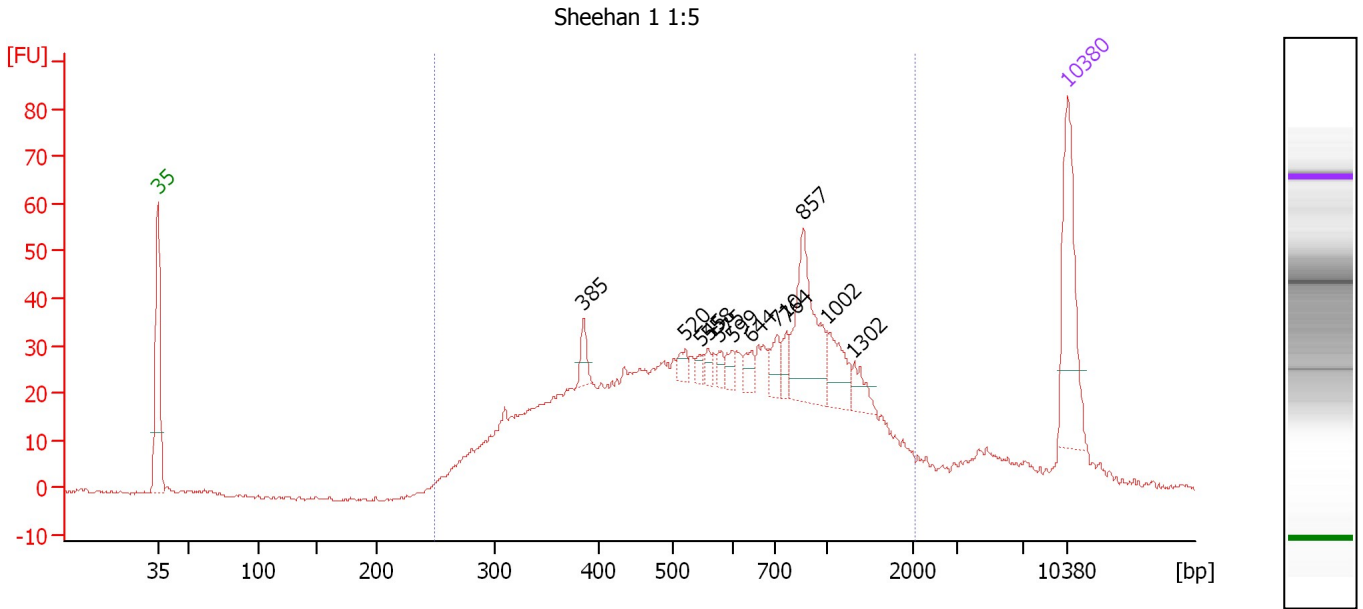
Region table for sample 7 : DbshC+8 1:21

From [bp]	To [bp]	Average Size [bp]	Molarity [pmol/l]	Conc. [pg/μl]	Corr. Area	% of Total	Size distribution in CV [%]	Color
200	942	417	8,215.2	2,021.42	1,802.0	91	30.1	

Assay Class: High Sensitivity DNA Assay
 Data Path: C:\...ents and Settings\Bioanalyzer\2014-02-05\2014-02-05_003.xad

Created: 2/5/2014 1:25:01 PM
 Modified: 2/5/2014 2:17:01 PM

Electropherogram Summary Continued ...



Overall Results for sample 8 : Sheehan 1 1:5

Number of peaks found: 12 Corr. Area 1: 1,014.9
 Noise: 0.4

Peak table for sample 8 : Sheehan 1 1:5

Peak	Aligned Migration Time [s]	Size [bp]	Conc. [pg/μl]	Molarity [pmol/l]	Observations
1	43.00	35	125.00	5,411.3	Lower Marker
2	75.75	385	15.19	59.7	
3	83.58	520	9.46	27.5	
4	84.74	545	6.30	17.5	
5	85.37	558	7.84	21.3	
6	86.14	575	7.76	20.5	
7	87.25	599	9.17	23.2	
8	88.70	644	11.11	26.2	
9	90.63	710	16.55	35.3	
10	91.36	764	12.48	24.7	
11	92.61	857	87.67	154.9	
12	94.55	1,002	30.95	46.8	
13	96.53	1,302	14.36	16.7	
14	113.00	10,380	75.00	10.9	Upper Marker

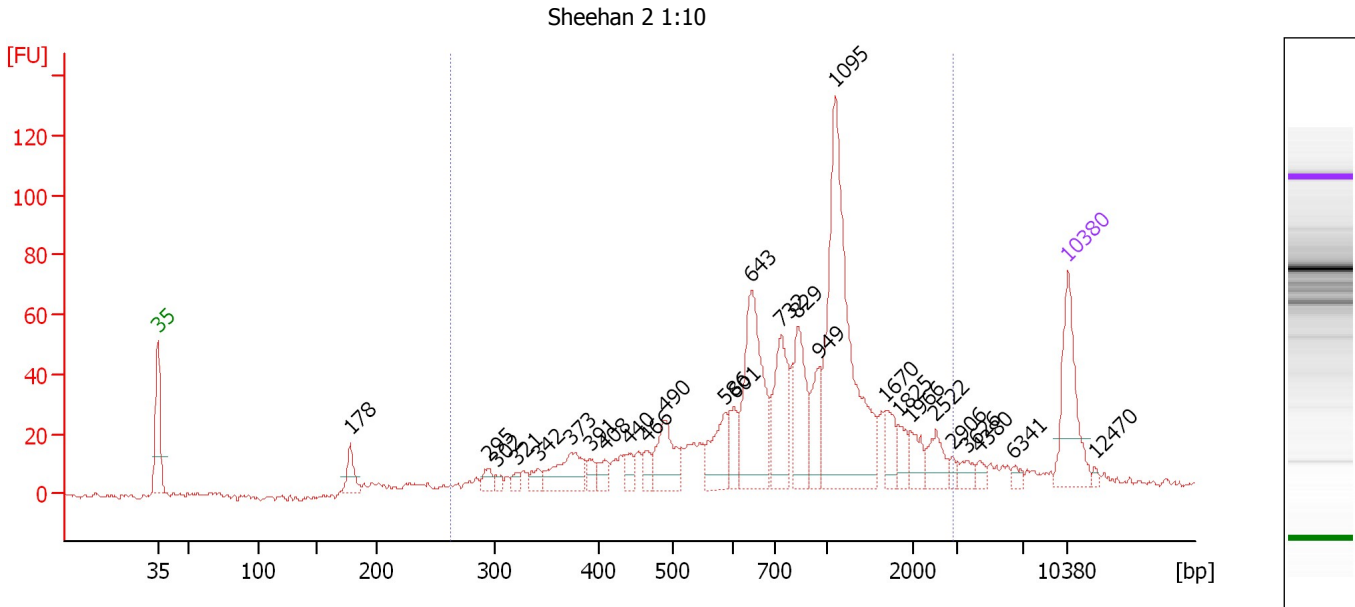
Region table for sample 8 : Sheehan 1 1:5

From [bp]	To [bp]	Average Size [bp]	Molarity [pmol/l]	Conc. [pg/μl]	Corr. Area	% of Total	Size distribution in CV [%]	Color
250	2,031	689	4,253.3	1,431.76	1,014.9	91	53.4	Blue

Assay Class: High Sensitivity DNA Assay
 Data Path: C:\...ents and Settings\Bioanalyzer\2014-02-05\2014-02-05_003.xad

Created: 2/5/2014 1:25:01 PM
 Modified: 2/5/2014 2:17:01 PM

Electropherogram Summary Continued ...



Overall Results for sample 9 : Sheehan 2 1:10

Number of peaks found: 27 Corr. Area 1: 995.8
 Noise: 0.7

Peak table for sample 9 : Sheehan 2 1:10

Peak	Aligned Migration Time [s]	Size [bp]	Conc. [pg/μl]	Molarity [pmol/l]	Observations
1	43.00	35	125.00	5,411.3	Lower Marker
2	57.82	178	30.63	261.2	
3	68.40	295	15.68	80.6	
4	69.03	302	7.48	37.5	
5	70.59	321	9.60	45.2	
6	72.25	342	13.37	59.2	
7	74.78	373	59.65	242.1	
8	76.25	391	15.12	58.5	
9	77.42	408	15.91	59.0	
10	79.22	440	14.10	48.5	
11	80.68	466	16.91	55.0	
12	82.05	490	61.07	188.9	
13	86.68	586	51.20	132.3	
14	87.36	601	31.32	78.9	
15	88.68	643	155.90	367.5	
16	90.92	732	88.18	182.6	
17	92.23	829	80.08	146.3	
18	93.84	949	40.82	65.2	
19	95.16	1,095	292.45	404.8	
20	98.96	1,670	26.31	23.9	
21	99.98	1,825	17.15	14.2	
22	100.91	1,966	21.69	16.7	
23	102.86	2,522	26.19	15.7	
24	104.13	2,906	5.87	3.1	
25	105.25	3,626	11.34	4.7	

Assay Class: High Sensitivity DNA Assay
 Data Path: C:\...ents and Settings\Bioanalyzer\2014-02-05\2014-02-05_003.xad


Created: 2/5/2014 1:25:01 PM
 Modified: 2/5/2014 2:17:01 PM

Electropherogram Summary Continued ...

... Peak table for sample 9 : Sheehan 2 1:10

Peak	Aligned Migration Time [s]	Size [bp]	Conc. [pg/ μ l]	Molarity [pmol/l]	Observations
26	106.22	4,380	6.58	2.3	
27	108.76	6,341	5.82	1.4	
28	113.00	10,380	75.00	10.9	Upper Marker
29	115.10	12,470	0.00	0.0	

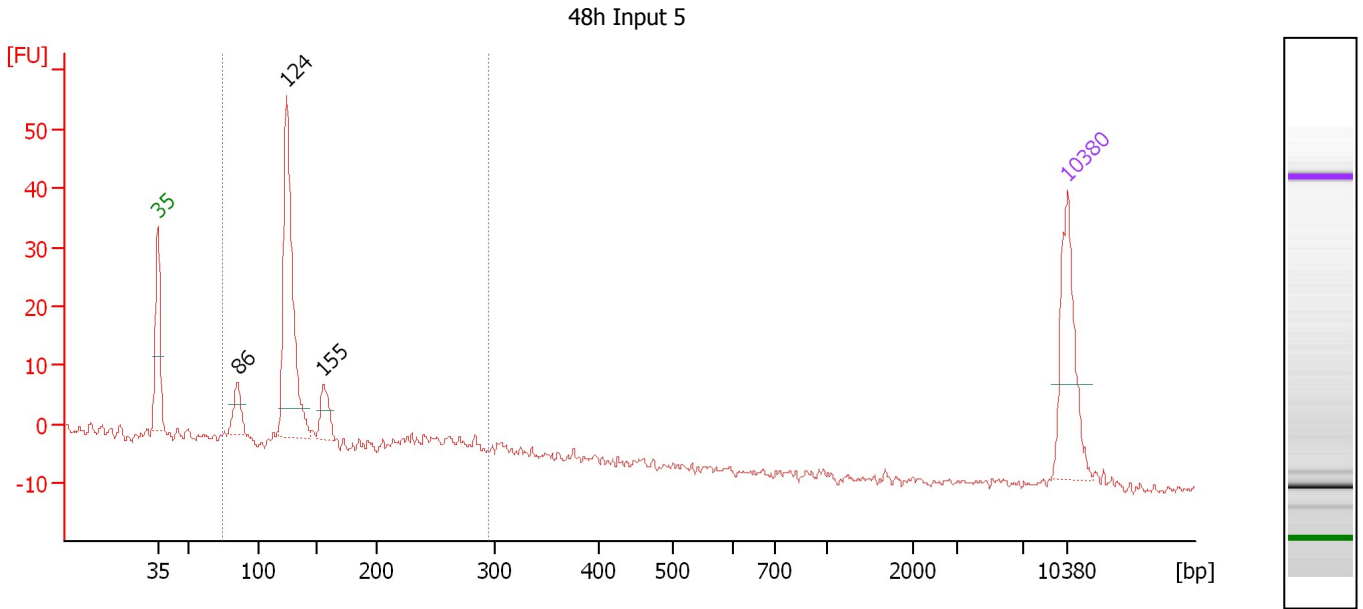
Region table for sample 9 : Sheehan 2 1:10

From [bp]	To [bp]	Average Size [bp]	Molarity [pmol/l]	Conc. [pg/ μ l]	Corr. Area	% of Total	Size distribution in CV [%]	Color
263	2,936	948	2,787.4	1,223.71	995.8	89	55.3	

Assay Class: High Sensitivity DNA Assay
 Data Path: C:\...ents and Settings\Bioanalyzer\2014-02-05\2014-02-05_003.xad

Created: 2/5/2014 1:25:01 PM
 Modified: 2/5/2014 2:17:01 PM

Electropherogram Summary Continued ...



Overall Results for sample 10 : 48h Input 5

Number of peaks found: 3 Corr. Area 1: 116.5
 Noise: 0.7

Peak table for sample 10 : 48h Input 5

Peak	Aligned Migration Time [s]	Size [bp]	Conc. [pg/μl]	Molarity [pmol/l]	Observations
1	43.00	35	125.00	5,411.3	Lower Marker
2	49.18	86	34.79	613.0	
3	52.91	124	249.72	3,049.3	
4	55.75	155	34.26	334.9	
5	113.00	10,380	75.00	10.9	Upper Marker

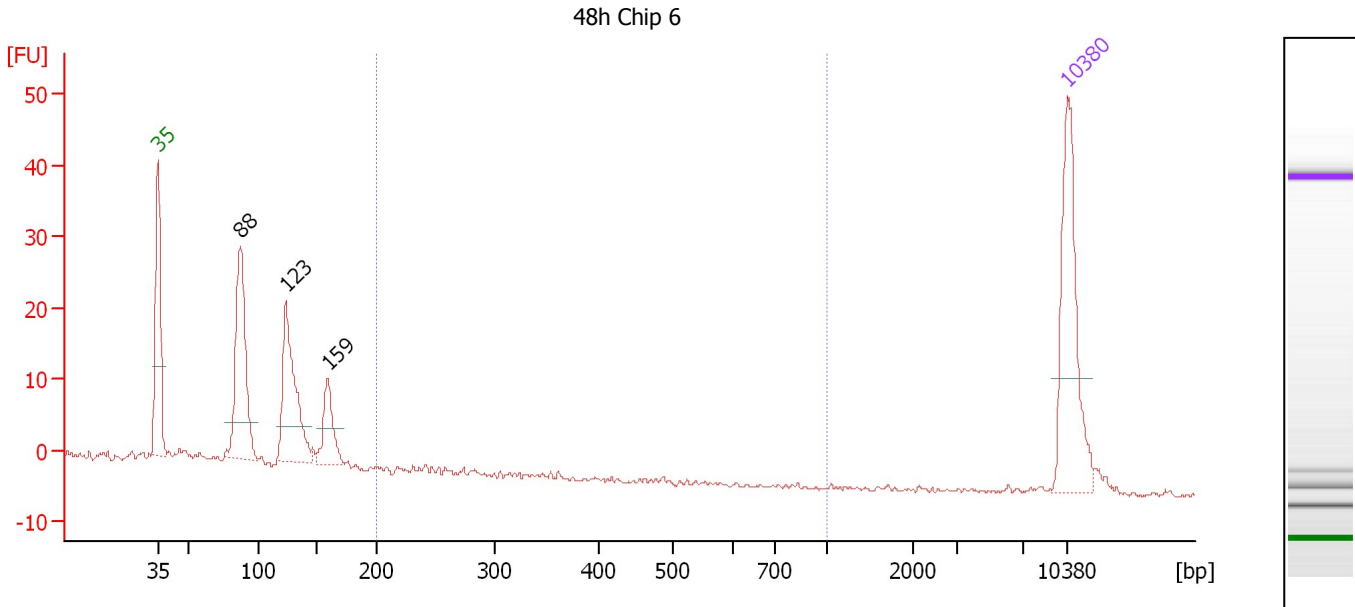
Region table for sample 10 : 48h Input 5

From [bp]	To [bp]	Average Size [bp]	Molarity [pmol/l]	Conc. [pg/μl]	Corr. Area	% of Total	Size distribution in CV [%]	Color
74	296	134	3,944.1	327.38	116.5	98	26.2	Blue

Assay Class: High Sensitivity DNA Assay
 Data Path: C:\...ents and Settings\Bioanalyzer\2014-02-05\2014-02-05_003.xad

Created: 2/5/2014 1:25:01 PM
 Modified: 2/5/2014 2:17:01 PM

Electropherogram Summary Continued ...



Overall Results for sample 11 : 48h Chip 6

Number of peaks found: 3 Corr. Area 1: 0.0
 Noise: 0.2

Peak table for sample 11 : 48h Chip 6

Peak	Aligned Migration Time [s]	Size [bp]	Conc. [pg/μl]	Molarity [pmol/l]	Observations
1	43.00	35	125.00	5,411.3	Lower Marker
2	49.38	88	125.88	2,171.1	
3	52.84	123	108.84	1,336.6	
4	56.11	159	39.78	379.3	
5	113.00	10,380	75.00	10.9	Upper Marker

Region table for sample 11 : 48h Chip 6

From [bp]	To [bp]	Average Size [bp]	Molarity [pmol/l]	Conc. [pg/μl]	Corr. Area	% of Total	Size distribution in CV [%]	Color
200	1,000	242	0.2	0.03	0.0	0	0.2	Blue

Assay Class: High Sensitivity DNA Assay
Data Path: C:\...ents and Settings\Bioanalyzer\2014-02-05\2014-02-05_003.xad

Created: 2/5/2014 1:25:01 PM
Modified: 2/5/2014 2:17:01 PM

Gel Image

