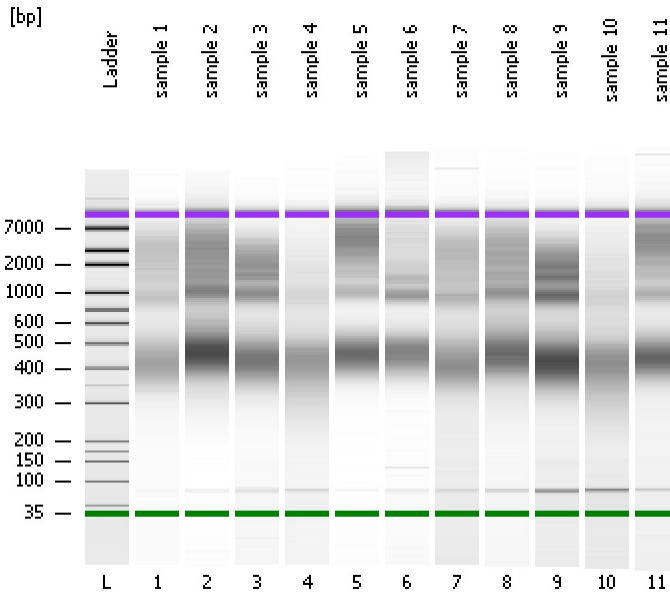


Assay Class: High Sensitivity DNA Assay
Data Path: C:\...ents and Settings\Bioanalyzer\2014-02-07\2014-02-07_002.xad

Created: 2/7/2014 1:47:48 PM
Modified: 2/7/2014 2:53:46 PM

Electrophoresis File Run Summary



Instrument Information:

Instrument Name: DE13701086 Firmware: C.01.069
Serial#: DE13701086 Type: G2938B

Assay Information:

Assay Origin Path: C:\Program Files\Agilent\2100 bioanalyzer\2100 expert\assays\dsDNA\High Sensitivity DNA.xsy
Assay Class: High Sensitivity DNA Assay
Version: 1.03
Assay Comments: Copyright © 2003-2010 Agilent Technologies

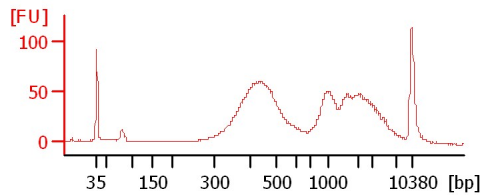
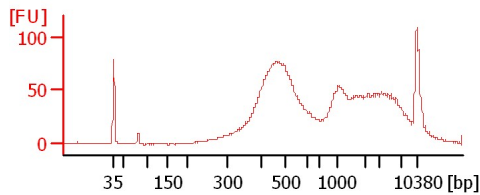
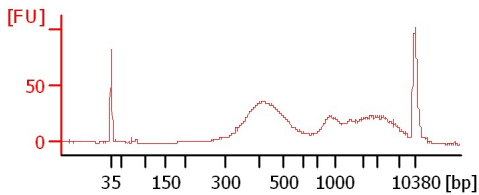
Chip Information:

Chip Lot #: Reagent Kit Lot #: Chip Comments:

sample 1

sample 2

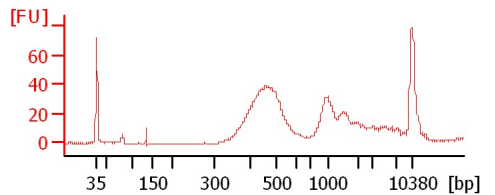
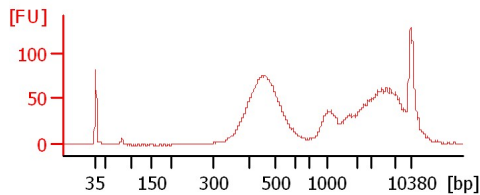
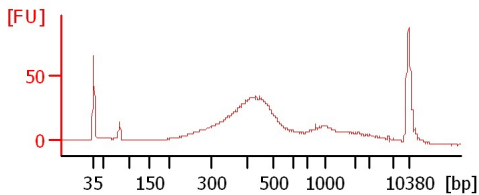
sample 3



sample 4

sample 5

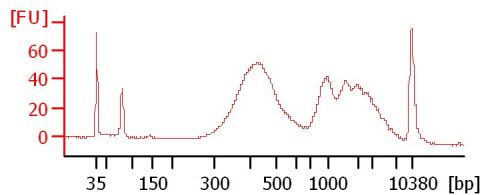
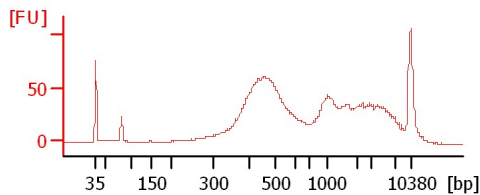
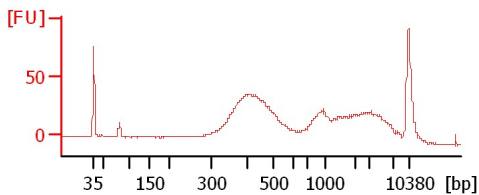
sample 6



sample 7

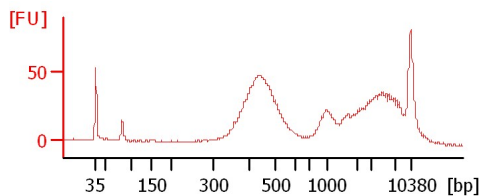
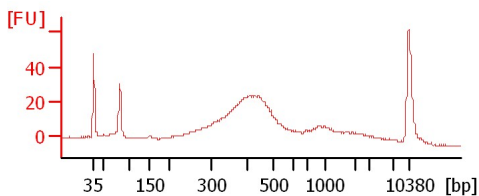
sample 8

sample 9



sample 10

sample 11



Assay Class: High Sensitivity DNA Assay
 Data Path: C:\...ents and Settings\Bioanalyzer\2014-02-07\2014-02-07_002.xad

Created: 2/7/2014 1:47:48 PM
 Modified: 2/7/2014 2:53:46 PM

Electrophoresis File Run Summary (Chip Summary)

Sample Name	Sample Comment	Rest. Digest	Status	Observation	Result Label	Result Color
sample 1		<input type="checkbox"/>	✓			
sample 2		<input type="checkbox"/>	✓			
sample 3		<input type="checkbox"/>	✓			
sample 4		<input type="checkbox"/>	✓			
sample 5		<input type="checkbox"/>	✓			
sample 6		<input type="checkbox"/>	✓			
sample 7		<input type="checkbox"/>	✓			
sample 8		<input type="checkbox"/>	✓			
sample 9		<input type="checkbox"/>	✓			
sample 10		<input type="checkbox"/>	✓			
sample 11		<input type="checkbox"/>	✓			
Ladder		<input type="checkbox"/>	✓			

Chip Lot #

Reagent Kit Lot #

Chip Comments :

Assay Class: High Sensitivity DNA Assay
 Data Path: C:\...ents and Settings\Bioanalyzer\2014-02-07\2014-02-07_002.xad

Created: 2/7/2014 1:47:48 PM
 Modified: 2/7/2014 2:53:46 PM

Electrophoresis Assay Details

General Analysis Settings

Number of Available Sample and Ladder Wells (Max.) : 12
 Minimum Visible Range [s] : 32
 Maximum Visible Range [s] : 138
 Start Analysis Time Range [s] : 33
 End Analysis Time Range [s] : 137.5
 Ladder Concentration [pg/μl] : 1950
 Uses Standard Area for Ladder Fragments
 Lower Marker Concentration [pg/μl] : 125
 Upper Marker Concentration [pg/μl] : 75
 Used Upper Marker for Quantitation
 Standard Curve Fit is Point to Point
 Show Data Aligned to Lower and Upper Marker

Integrator Settings

Integration Start Time [s] : 33.05
 Integration End Time [s] : 137
 Slope Threshold : 0.8
 Height Threshold [FU] : 5
 Area Threshold : 0.1
 Width Threshold [s] : 0.6
 Baseline Plateau [s] : 0.5

Filter Settings

Filter Width [s] : 0.5
 Polynomial Order : 4

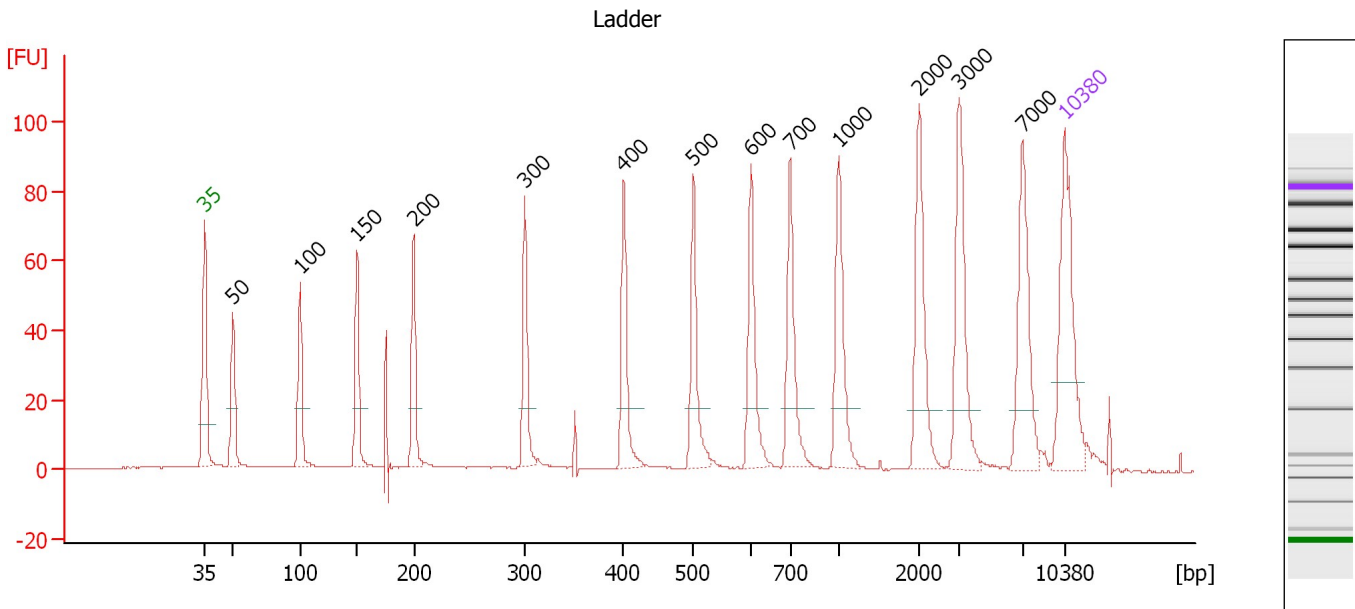
Ladder

Ladder Peak	Size	Area
1	35	160
2	50	210
3	100	208
4	150	221
5	200	242
6	300	270
7	400	305
8	500	306
9	600	336
10	700	321
11	1000	366
12	2000	413
13	3000	411
14	7000	400
15	10380	214

Assay Class: High Sensitivity DNA Assay
 Data Path: C:\...ents and Settings\Bioanalyzer\2014-02-07\2014-02-07_002.xad

Created: 2/7/2014 1:47:48 PM
 Modified: 2/7/2014 2:53:46 PM

Electropherogram Summary



Overall Results for Ladder

Noise: 0.2

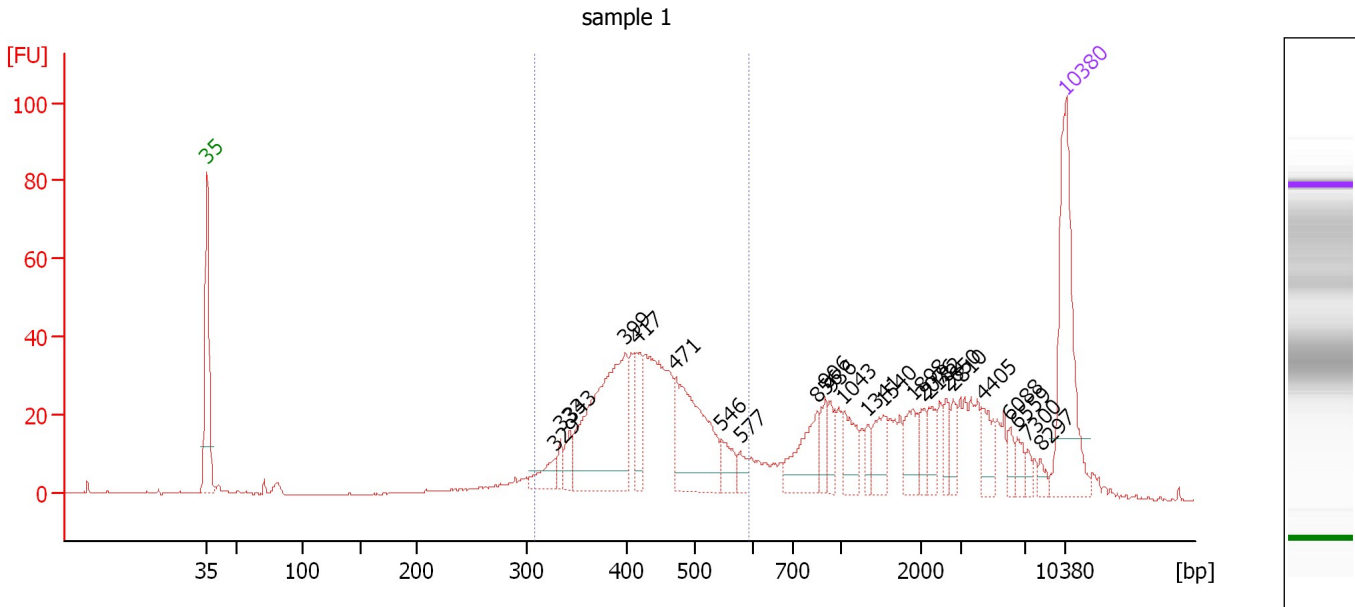
Peak table for Ladder

Peak	Aligned Migration Time [s]	Size [bp]	Conc. [pg/μl]	Molarity [pmol/l]	Observations
1	43.00	35	125.00	5,411.3	Lower Marker
2	45.30	50	150.00	4,545.5	Ladder Peak
3	50.77	100	150.00	2,272.7	Ladder Peak
4	55.42	150	150.00	1,515.2	Ladder Peak
5	60.02	200	150.00	1,136.4	Ladder Peak
6	69.10	300	150.00	757.6	Ladder Peak
7	77.13	400	150.00	568.2	Ladder Peak
8	82.82	500	150.00	454.5	Ladder Peak
9	87.51	600	150.00	378.8	Ladder Peak
10	90.68	700	150.00	324.7	Ladder Peak
11	94.63	1,000	150.00	227.3	Ladder Peak
12	101.19	2,000	150.00	113.6	Ladder Peak
13	104.45	3,000	150.00	75.8	Ladder Peak
14	109.61	7,000	150.00	32.5	Ladder Peak
15	113.00	10,380	75.00	10.9	Upper Marker

Assay Class: High Sensitivity DNA Assay
 Data Path: C:\...ents and Settings\Bioanalyzer\2014-02-07\2014-02-07_002.xad

Created: 2/7/2014 1:47:48 PM
 Modified: 2/7/2014 2:53:46 PM

Electropherogram Summary Continued ...



Overall Results for sample 1 : sample 1

Number of peaks found: 24 Corr. Area 1: 529.9
 Noise: 0.2

Peak table for sample 1 : sample 1

Peak	Aligned Migration Time [s]	Size [bp]	Conc. [pg/μl]	Molarity [pmol/l]	Observations
1	43.00	35	125.00	5,411.3	Lower Marker
2	71.39	329	17.22	79.4	
3	71.78	333	8.24	37.4	
4	72.57	343	12.94	57.1	
5	77.04	399	141.03	535.7	
6	78.09	417	29.10	105.8	
7	81.17	471	91.64	294.8	
8	84.96	546	16.27	45.2	
9	86.43	577	8.88	23.3	
10	92.74	856	35.00	61.9	
11	93.39	906	13.38	22.4	
12	93.78	936	10.73	17.4	
13	94.91	1,043	21.49	31.2	
14	96.87	1,341	7.41	8.4	
15	98.17	1,540	17.65	17.4	
16	100.52	1,898	17.24	13.8	
17	101.43	2,076	8.19	6.0	
18	101.78	2,182	12.15	8.4	
19	103.30	2,650	9.54	5.5	
20	103.83	2,810	8.72	4.7	
21	106.26	4,405	13.47	4.6	
22	108.43	6,088	5.85	1.5	
23	109.04	6,559	7.47	1.7	
24	109.91	7,300	3.88	0.8	
25	110.91	8,297	3.95	0.7	


Assay Class: High Sensitivity DNA Assay
Data Path: C:\...ents and Settings\Bioanalyzer\2014-02-07\2014-02-07_002.xad

Created: 2/7/2014 1:47:48 PM
Modified: 2/7/2014 2:53:46 PM

Electropherogram Summary Continued ...**... Peak table for sample 1 : sample 1**

Peak	Aligned Migration Time [s]	Size [bp]	Conc. [pg/ μ l]	Molarity [pmol/l]	Observations
26	113.00	10,380	75.00	10.9	Upper Marker

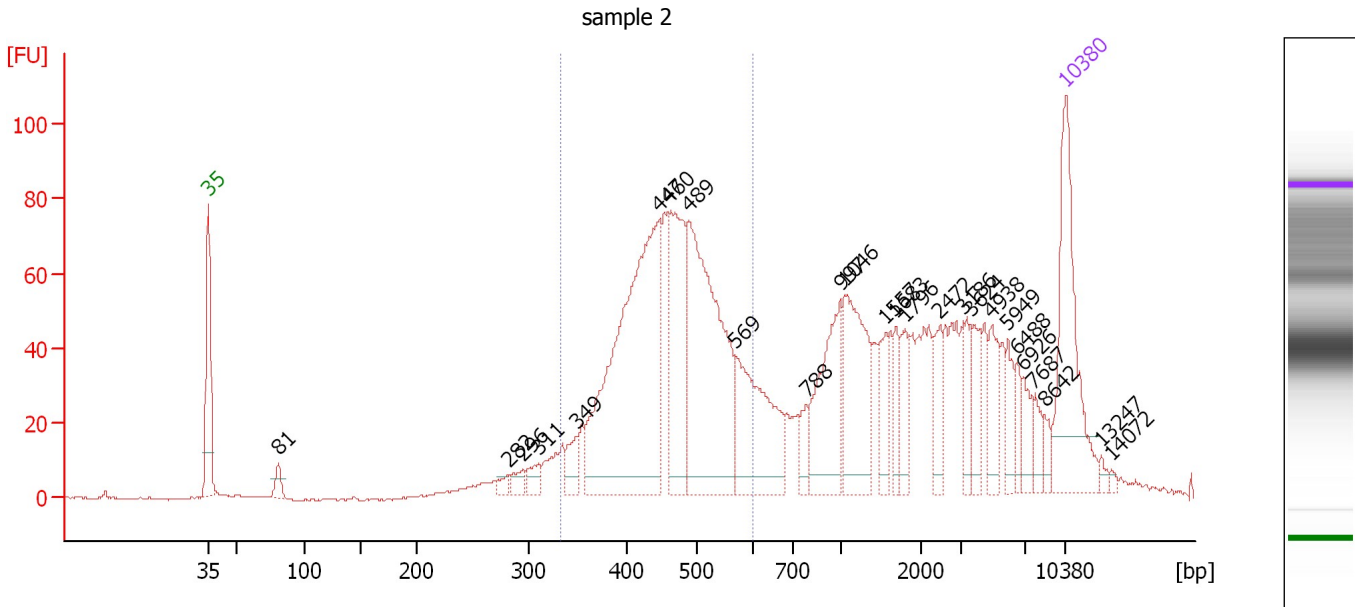
Region table for sample 1 : sample 1

From [bp]	To [bp]	Average Size [bp]	Molarity [pmol/l]	Conc. [pg/ μ l]	Corr. Area	% of Total	Size distribution in CV [%]	Color
308	591	432	1,709.1	473.81	529.9	50	15.0	

Assay Class: High Sensitivity DNA Assay
 Data Path: C:\...ents and Settings\Bioanalyzer\2014-02-07\2014-02-07_002.xad

Created: 2/7/2014 1:47:48 PM
 Modified: 2/7/2014 2:53:46 PM

Electropherogram Summary Continued ...



Overall Results for sample 2 : sample 2

Number of peaks found: 26 Corr. Area 1: 974.5
 Noise: 0.2

Peak table for sample 2 : sample 2

Peak	Aligned Migration Time [s]	Size [bp]	Conc. [pg/μl]	Molarity [pmol/l]	Observations
1	43.00	35	125.00	5,411.3	Lower Marker
2	48.70	81	11.63	217.3	
3	67.47	282	6.25	33.6	
4	68.73	296	8.41	43.1	
5	69.95	311	10.71	52.3	
6	73.04	349	16.10	69.9	
7	79.78	447	267.27	906.7	
8	80.57	460	100.32	330.1	
9	82.22	489	197.23	610.5	
10	86.05	569	90.61	241.3	
11	91.84	788	12.23	23.5	
12	94.59	997	64.37	97.9	
13	94.93	1,046	72.21	104.6	
14	98.29	1,557	18.95	18.4	
15	99.11	1,683	13.84	12.5	
16	99.85	1,796	18.65	15.7	
17	102.73	2,472	18.89	11.6	
18	104.69	3,186	13.34	6.3	
19	105.25	3,624	20.96	8.8	
20	106.95	4,938	20.71	6.4	
21	108.25	5,949	14.71	3.7	
22	108.95	6,488	9.53	2.2	
23	109.52	6,926	12.50	2.7	
24	110.30	7,687	9.88	1.9	
25	111.26	8,642	6.11	1.1	

Assay Class: High Sensitivity DNA Assay
Data Path: C:\...ents and Settings\Bioanalyzer\2014-02-07\2014-02-07_002.xad

Created: 2/7/2014 1:47:48 PM
Modified: 2/7/2014 2:53:46 PM

Electropherogram Summary Continued ...**... Peak table for sample 2 : sample 2**

Peak	Aligned Migration Time [s]	Size [bp]	Conc. [pg/ μ l]	Molarity [pmol/l]	Observations
26	113.00	10,380	75.00	10.9	Upper Marker
27	115.87	13,247	0.00	0.0	
28	116.70	14,073	0.00	0.0	

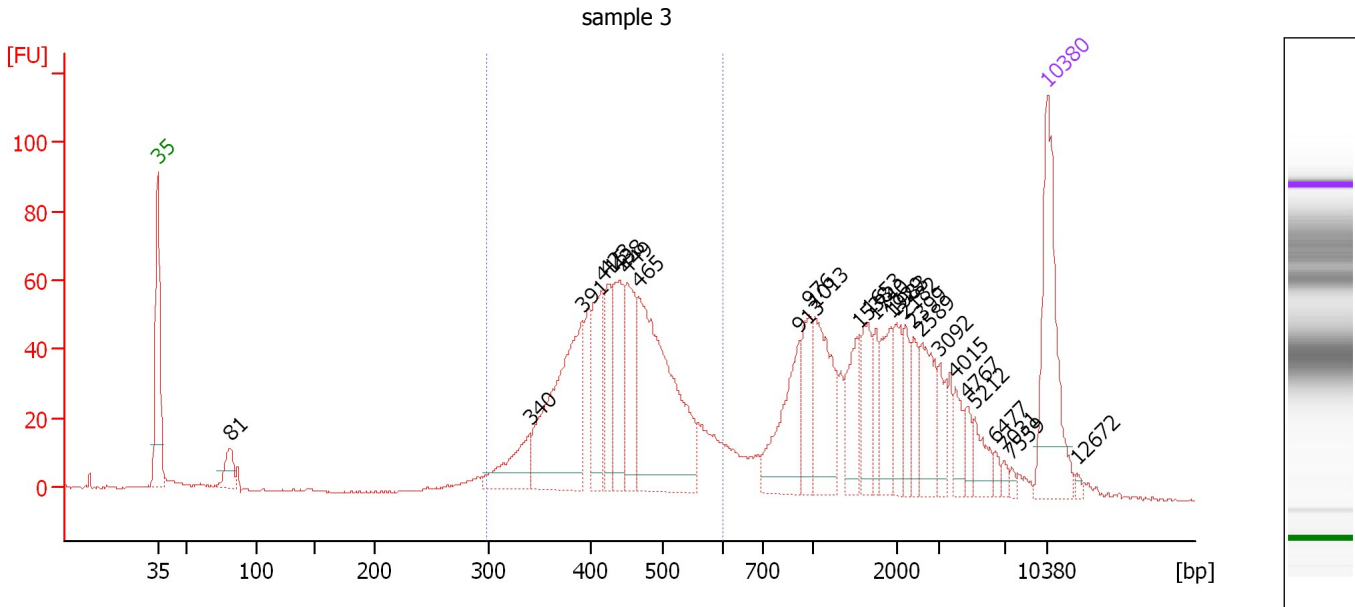
Region table for sample 2 : sample 2

From [bp]	To [bp]	Average Size [bp]	Molarity [pmol/l]	Conc. [pg/ μ l]	Corr. Area	% of Total	Size distribution in CV [%]	Color
333	597	463	2,294.2	683.57	974.5	48	13.7	

Assay Class: High Sensitivity DNA Assay
 Data Path: C:\...ents and Settings\Bioanalyzer\2014-02-07\2014-02-07_002.xad

Created: 2/7/2014 1:47:48 PM
 Modified: 2/7/2014 2:53:46 PM

Electropherogram Summary Continued ...



Overall Results for sample 3 : sample 3

Number of peaks found: 27 Corr. Area 1: 833.7
 Noise: 0.3

Peak table for sample 3 : sample 3

Peak	Aligned Migration Time [s]	Size [bp]	Conc. [pg/μl]	Molarity [pmol/l]	Observations
1	43.00	35	125.00	5,411.3	Lower Marker
2	48.70	81	22.61	422.8	
3	72.28	340	39.47	176.1	
4	76.39	391	144.72	561.2	
5	77.98	415	56.81	207.5	
6	78.42	423	38.31	137.3	
7	79.30	438	57.77	199.8	
8	79.92	449	55.81	188.3	
9	80.85	465	181.15	589.8	
10	93.48	913	58.84	97.7	
11	94.32	976	33.42	51.9	
12	94.72	1,013	62.71	93.8	
13	98.16	1,538	31.44	31.0	
14	98.91	1,653	29.64	27.2	
15	99.49	1,740	16.57	14.4	
16	100.72	1,929	28.56	22.4	
17	101.08	1,983	20.60	15.7	
18	101.78	2,182	17.25	12.0	
19	102.49	2,399	17.37	11.0	
20	103.11	2,589	35.15	20.6	
21	104.56	3,092	15.26	7.5	
22	105.76	4,015	13.68	5.2	
23	106.73	4,767	9.32	3.0	
24	107.30	5,212	15.30	4.4	
25	108.94	6,477	4.09	1.0	

Assay Class: High Sensitivity DNA Assay
 Data Path: C:\...ents and Settings\Bioanalyzer\2014-02-07\2014-02-07_002.xad


Created: 2/7/2014 1:47:48 PM
 Modified: 2/7/2014 2:53:46 PM

Electropherogram Summary Continued ...

... Peak table for sample 3 : sample 3

Peak	Aligned Migration Time [s]	Size [bp]	Conc. [pg/ μ l]	Molarity [pmol/l]	Observations
26	109.64	7,031	3.28	0.7	
27	110.17	7,559	2.48	0.5	
28	113.00	10,380	75.00	10.9	Upper Marker
29	115.30	12,672	0.00	0.0	

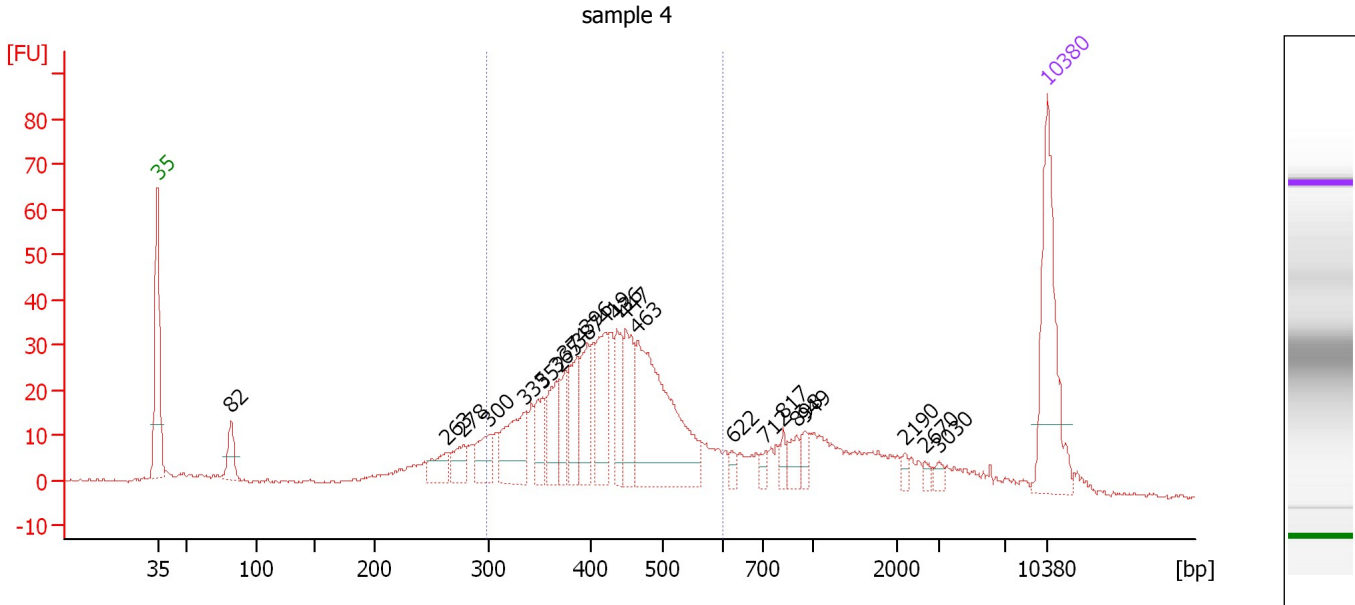
Region table for sample 3 : sample 3

From [bp]	To [bp]	Average Size [bp]	Molarity [pmol/l]	Conc. [pg/ μ l]	Corr. Area	% of Total	Size distribution in CV [%]	Color
297	600	438	2,352.6	661.32	833.7	50	15.0	

Assay Class: High Sensitivity DNA Assay
 Data Path: C:\...ents and Settings\Bioanalyzer\2014-02-07\2014-02-07_002.xad

Created: 2/7/2014 1:47:48 PM
 Modified: 2/7/2014 2:53:46 PM

Electropherogram Summary Continued ...



Overall Results for sample 4 : sample 4

Number of peaks found: 22 Corr. Area 1: 540.1
 Noise: 0.4

Peak table for sample 4 : sample 4

Peak	Aligned Migration Time [s]	Size [bp]	Conc. [pg/μl]	Molarity [pmol/l]	Observations
1	43.00	35	125.00	5,411.3	Lower Marker
2	48.75	82	24.49	455.1	
3	65.74	263	20.19	116.3	
4	67.08	278	18.20	99.3	
5	69.13	300	25.26	127.4	
6	71.89	335	51.93	235.0	
7	73.27	352	25.59	110.1	
8	74.34	365	34.33	142.4	
9	75.06	374	24.88	100.7	
10	76.08	387	37.88	148.3	
11	76.80	396	37.14	142.2	
12	78.22	419	46.25	167.2	
13	79.16	436	33.78	117.5	
14	79.83	447	43.18	146.2	
15	80.72	463	145.24	475.2	
16	88.21	622	5.61	13.7	
17	90.84	712	6.09	13.0	
18	92.22	817	6.98	12.9	
19	93.29	898	11.71	19.7	
20	93.96	949	8.88	14.2	
21	101.81	2,190	3.62	2.5	
22	103.37	2,670	3.43	1.9	
23	104.48	3,030	3.76	1.9	
24	113.00	10,380	75.00	10.9	Upper Marker

Assay Class: High Sensitivity DNA Assay
Data Path: C:\...ents and Settings\Bioanalyzer\2014-02-07\2014-02-07_002.xad

Created: 2/7/2014 1:47:48 PM
Modified: 2/7/2014 2:53:46 PM

Electropherogram Summary Continued ...

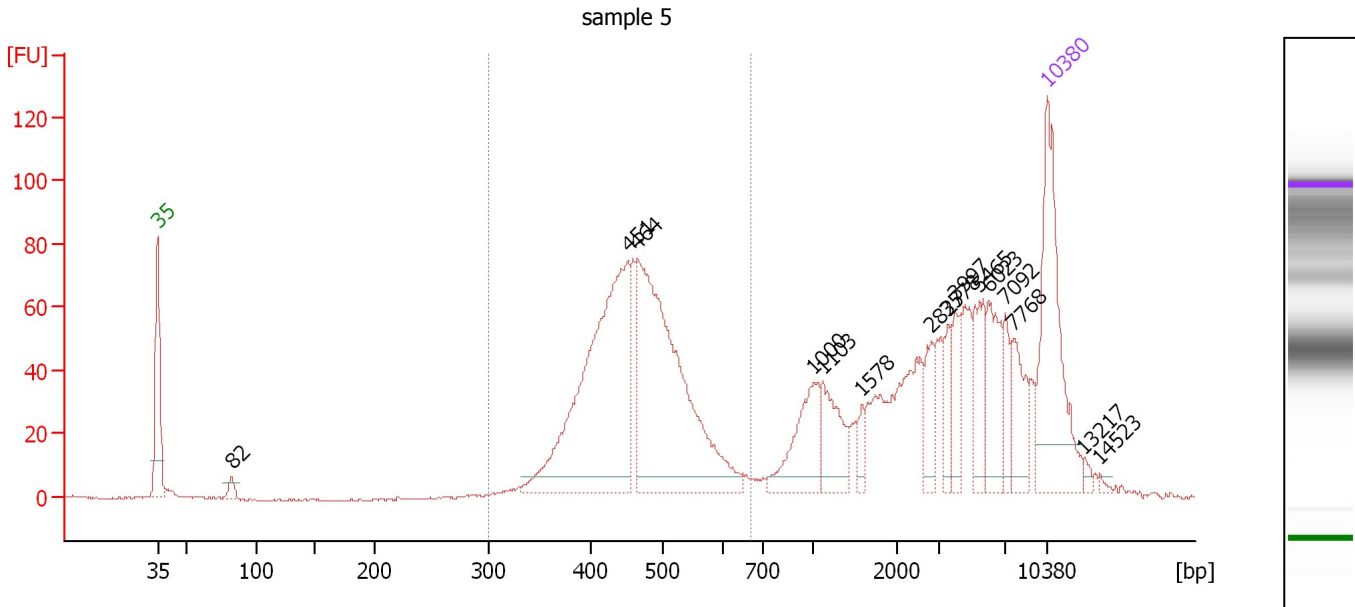
... Region table for sample 4 : sample 4

From [bp]	To [bp]	Average Size [bp]	Molarity [pmol/l]	Conc. [pg/μl]	Corr. Area	% of Total	Size distribution in CV [%]	Color
297	599	425	2,179.1	590.35	540.1	63	16.5	■

Assay Class: High Sensitivity DNA Assay
 Data Path: C:\...ents and Settings\Bioanalyzer\2014-02-07\2014-02-07_002.xad

Created: 2/7/2014 1:47:48 PM
 Modified: 2/7/2014 2:53:46 PM

Electropherogram Summary Continued ...



Overall Results for sample 5 : sample 5

Number of peaks found: 15 Corr. Area 1: 836.1
 Noise: 0.3

Peak table for sample 5 : sample 5

Peak	Aligned Migration Time [s]	Size [bp]	Conc. [pg/μl]	Molarity [pmol/l]	Observations
1	43.00	35	125.00	5,411.3	Lower Marker
2	48.82	82	7.36	135.7	
3	80.01	451	212.93	716.0	
4	80.78	464	214.29	699.7	
5	94.63	1,000	41.06	62.2	
6	95.31	1,103	31.18	42.8	
7	98.42	1,578	7.84	7.5	
8	103.88	2,827	15.53	8.3	
9	105.19	3,578	12.59	5.3	
10	105.73	3,997	18.81	7.1	
11	107.63	5,465	24.97	6.9	
12	108.35	6,023	30.35	7.6	
13	109.71	7,092	13.47	2.9	
14	110.38	7,768	24.32	4.7	
15	113.00	10,380	75.00	10.9	Upper Marker
16	115.84	13,217	0.00	0.0	
17	117.15	14,523	0.00	0.0	

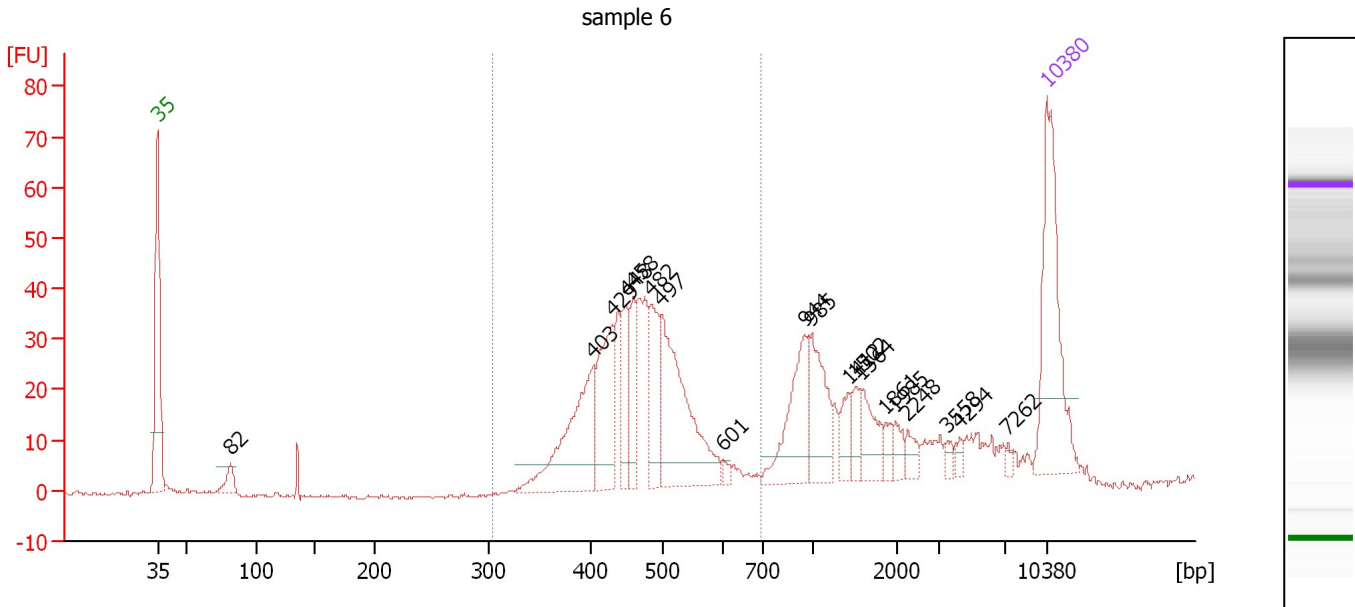
Region table for sample 5 : sample 5

From [bp]	To [bp]	Average Size [bp]	Molarity [pmol/l]	Conc. [pg/μl]	Corr. Area	% of Total	Size distribution in CV [%]	Color
300	668	463	1,595.3	475.81	836.1	50	13.8	Blue

Assay Class: High Sensitivity DNA Assay
 Data Path: C:\...ents and Settings\Bioanalyzer\2014-02-07\2014-02-07_002.xad

Created: 2/7/2014 1:47:48 PM
 Modified: 2/7/2014 2:53:46 PM

Electropherogram Summary Continued ...



Overall Results for sample 6 : sample 6

Number of peaks found: 19 Corr. Area 1: 374.6
 Noise: 0.4

Peak table for sample 6 : sample 6

Peak	Aligned Migration Time [s]	Size [bp]	Conc. [pg/μl]	Molarity [pmol/l]	Observations
1	43.00	35	125.00	5,411.3	Lower Marker
2	48.75	82	13.71	254.9	
3	77.28	403	89.63	337.4	
4	78.77	429	61.38	216.9	
5	79.86	448	32.51	110.0	
6	80.45	458	30.92	102.2	
7	81.80	482	42.45	133.4	
8	82.66	497	110.40	336.4	
9	87.55	601	3.64	9.2	
10	93.89	944	53.77	86.3	
11	94.44	985	42.50	65.4	
12	97.33	1,412	14.32	15.4	
13	97.92	1,502	11.27	11.4	
14	98.33	1,564	22.33	21.6	
15	100.28	1,861	6.42	5.2	
16	101.09	1,985	8.44	6.4	
17	102.00	2,248	7.58	5.1	
18	105.17	3,558	3.94	1.7	
19	106.12	4,294	3.90	1.4	
20	109.88	7,262	2.51	0.5	
21	113.00	10,380	75.00	10.9	Upper Marker

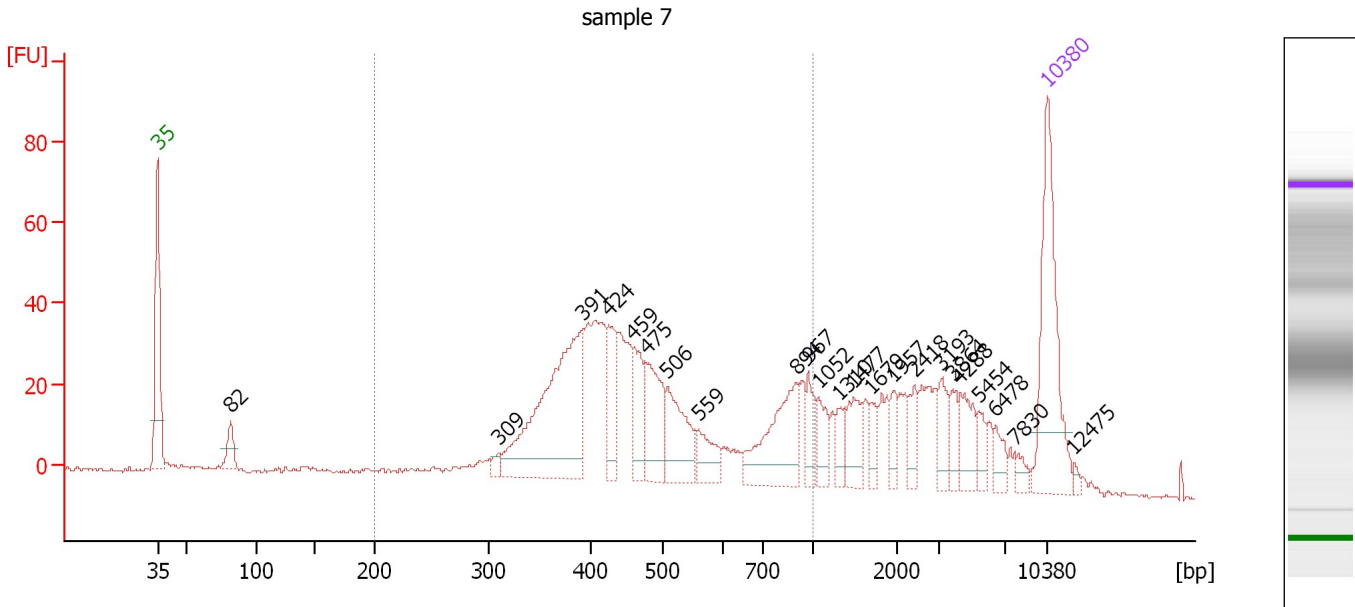
Region table for sample 6 : sample 6

From [bp]	To [bp]	Average Size [bp]	Molarity [pmol/l]	Conc. [pg/μl]	Corr. Area	% of Total	Size distribution in CV [%]	Color
304	695	463	1,379.1	414.47	374.6	61	12.1	Blue

Assay Class: High Sensitivity DNA Assay
 Data Path: C:\...ents and Settings\Bioanalyzer\2014-02-07\2014-02-07_002.xad

Created: 2/7/2014 1:47:48 PM
 Modified: 2/7/2014 2:53:46 PM

Electropherogram Summary Continued ...



Overall Results for sample 7 : sample 7

Number of peaks found: 23 Corr. Area 1: 696.4
 Noise: 0.4

Peak table for sample 7 : sample 7

Peak	Aligned Migration Time [s]	Size [bp]	Conc. [pg/μl]	Molarity [pmol/l]	Observations
1	43.00	35	125.00	5,411.3	Lower Marker
2	48.75	82	18.20	338.4	
3	69.83	309	6.14	30.1	
4	76.45	391	162.53	629.0	
5	78.50	424	34.41	122.9	
6	80.46	459	33.10	109.4	
7	81.42	475	46.84	149.3	
8	83.11	506	45.96	137.6	
9	85.57	559	21.44	58.1	
10	93.24	894	59.71	101.1	
11	94.20	967	16.42	25.7	
12	94.98	1,052	16.14	23.2	
13	96.66	1,310	11.47	13.3	
14	97.76	1,477	20.63	21.2	
15	99.08	1,679	9.50	8.6	
16	100.91	1,957	10.18	7.9	
17	102.55	2,418	13.15	8.2	
18	104.69	3,193	15.35	7.3	
19	105.56	3,864	11.42	4.5	
20	106.11	4,288	20.34	7.2	
21	107.62	5,454	9.43	2.6	
22	108.94	6,478	9.52	2.2	
23	110.44	7,830	6.12	1.2	
24	113.00	10,380	75.00	10.9	Upper Marker
25	115.10	12,475	0.00	0.0	

Assay Class: High Sensitivity DNA Assay
Data Path: C:\...ents and Settings\Bioanalyzer\2014-02-07\2014-02-07_002.xad

Created: 2/7/2014 1:47:48 PM
Modified: 2/7/2014 2:53:46 PM

Electropherogram Summary Continued ...

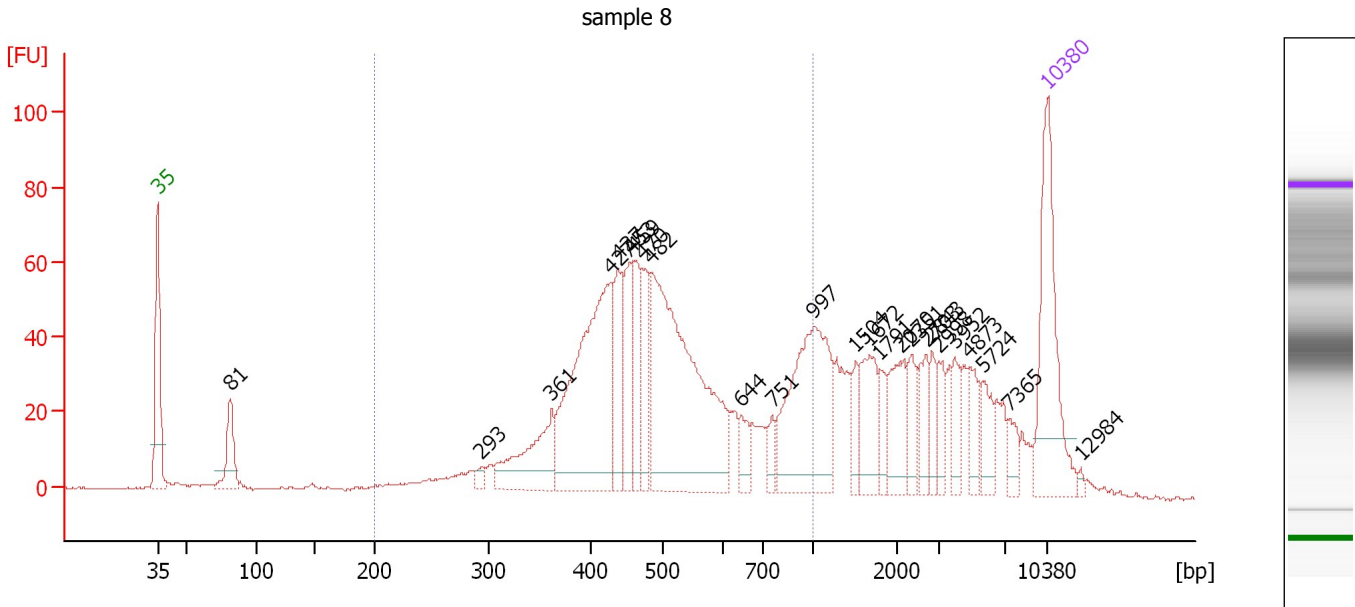
... Region table for sample 7 : sample 7

From [bp]	To [bp]	Average Size [bp]	Molarity [pmol/l]	Conc. [pg/μl]	Corr. Area	% of Total	Size distribution in CV [%]	Color
200	1,000	502	2,153.2	626.38	696.4	65	35.0	■

Assay Class: High Sensitivity DNA Assay
 Data Path: C:\...ents and Settings\Bioanalyzer\2014-02-07\2014-02-07_002.xad

Created: 2/7/2014 1:47:48 PM
 Modified: 2/7/2014 2:53:46 PM

Electropherogram Summary Continued ...



Overall Results for sample 8 : sample 8

Number of peaks found: 25 Corr. Area 1: 1,075.7
 Noise: 0.3

Peak table for sample 8 : sample 8

Peak	Aligned Migration Time [s]	Size [bp]	Conc. [pg/μl]	Molarity [pmol/l]	Observations
1	43.00	35	125.00	5,411.3	Lower Marker
2	48.72	81	38.55	718.8	
3	68.50	293	5.85	30.2	
4	73.99	361	63.99	268.6	
5	78.66	427	188.88	670.3	
6	79.21	437	41.14	142.8	
7	80.17	453	47.38	158.3	
8	80.50	459	45.20	149.2	
9	81.14	470	35.44	114.1	
10	81.82	482	237.41	745.6	
11	88.92	644	14.35	33.7	
12	91.35	751	10.86	21.9	
13	94.60	997	115.36	175.3	
14	97.94	1,504	13.25	13.3	
15	99.04	1,672	33.88	30.7	
16	99.81	1,791	13.86	11.7	
17	101.42	2,070	30.70	22.5	
18	102.33	2,351	16.43	10.6	
19	103.48	2,703	18.01	10.1	
20	103.94	2,843	12.64	6.7	
21	104.44	2,998	14.61	7.4	
22	105.67	3,952	17.53	6.7	
23	106.87	4,873	17.09	5.3	
24	107.96	5,724	16.03	4.2	
25	109.98	7,365	10.06	2.1	

Assay Class: High Sensitivity DNA Assay
Data Path: C:\...ents and Settings\Bioanalyzer\2014-02-07\2014-02-07_002.xad

Created: 2/7/2014 1:47:48 PM
Modified: 2/7/2014 2:53:46 PM

Electropherogram Summary Continued ...**... Peak table for sample 8 : sample 8**

Peak	Aligned Migration Time [s]	Size [bp]	Conc. [pg/ μ l]	Molarity [pmol/l]	Observations
26	113.00	10,380	75.00	10.9	Upper Marker
27	115.61	12,984	0.00	0.0	

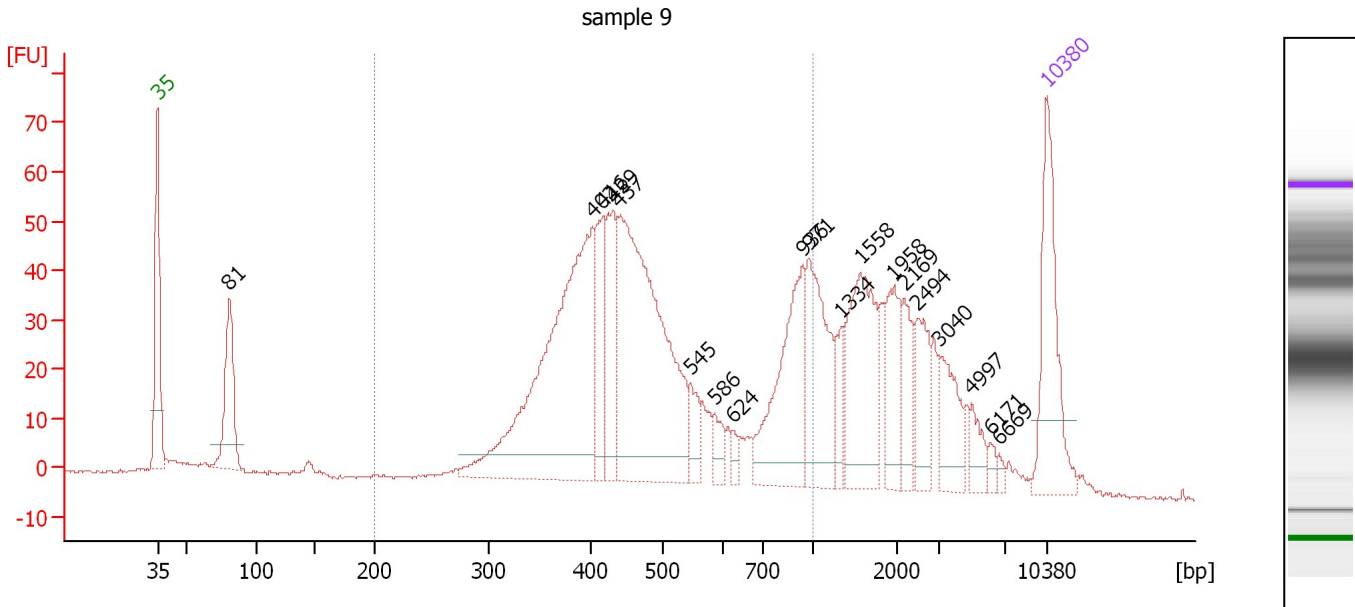
Region table for sample 8 : sample 8

From [bp]	To [bp]	Average Size [bp]	Molarity [pmol/l]	Conc. [pg/ μ l]	Corr. Area	% of Total	Size distribution in CV [%]	Color
200	1,000	520	2,795.7	848.32	1,075.7	64	32.3	

Assay Class: High Sensitivity DNA Assay
 Data Path: C:\...ents and Settings\Bioanalyzer\2014-02-07\2014-02-07_002.xad

Created: 2/7/2014 1:47:48 PM
 Modified: 2/7/2014 2:53:46 PM

Electropherogram Summary Continued ...



Overall Results for sample 9 : sample 9

Number of peaks found: 19 Corr. Area 1: 940.7
 Noise: 0.4

Peak table for sample 9 : sample 9

Peak	Aligned Migration Time [s]	Size [bp]	Conc. [pg/μl]	Molarity [pmol/l]	Observations
1	43.00	35	125.00	5,411.3	Lower Marker
2	48.65	81	89.33	1,678.7	
3	77.24	402	316.75	1,194.0	
4	78.07	416	62.05	225.8	
5	78.80	429	66.31	234.0	
6	79.26	437	299.87	1,038.6	
7	84.92	545	21.15	58.8	
8	86.85	586	14.46	37.4	
9	88.27	624	7.65	18.6	
10	93.79	936	106.81	172.9	
11	94.25	971	86.09	134.4	
12	96.82	1,334	21.16	24.0	
13	98.29	1,558	91.85	89.3	
14	100.91	1,958	44.09	34.1	
15	101.74	2,169	27.06	18.9	
16	102.80	2,494	35.38	21.5	
17	104.50	3,040	36.81	18.3	
18	107.02	4,997	14.68	4.5	
19	108.54	6,171	5.84	1.4	
20	109.19	6,669	3.37	0.8	
21	113.00	10,380	75.00	10.9	Upper Marker

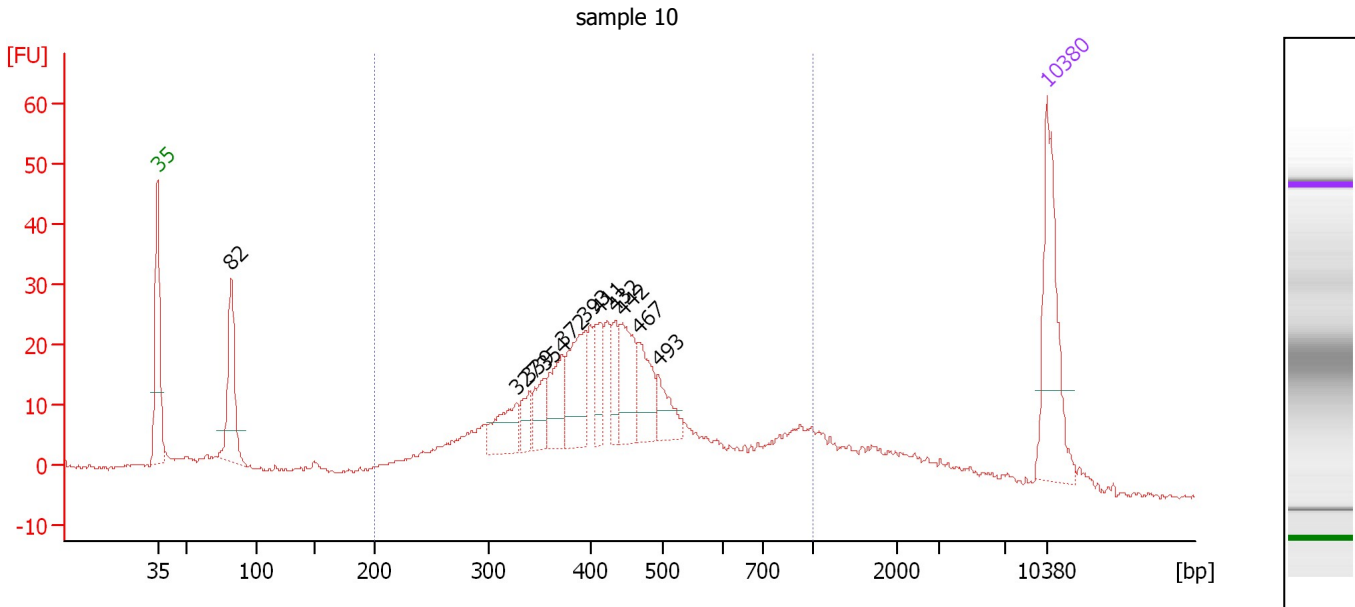
Region table for sample 9 : sample 9

From [bp]	To [bp]	Average Size [bp]	Molarity [pmol/l]	Conc. [pg/μl]	Corr. Area	% of Total	Size distribution in CV [%]	Color
200	1,000	515	3,412.2	1,016.47	940.7	63	35.6	Blue

Assay Class: High Sensitivity DNA Assay
 Data Path: C:\...ents and Settings\Bioanalyzer\2014-02-07\2014-02-07_002.xad

Created: 2/7/2014 1:47:48 PM
 Modified: 2/7/2014 2:53:46 PM

Electropherogram Summary Continued ...



Overall Results for sample 10 : sample 10

Number of peaks found: 11 Corr. Area 1: 537.7
 Noise: 0.3

Peak table for sample 10 : sample 10

Peak	Aligned Migration Time [s]	Size [bp]	Conc. [pg/μl]	Molarity [pmol/l]	Observations
1	43.00	35	125.00	5,411.3	Lower Marker
2	48.79	82	86.67	1,603.0	
3	71.23	327	37.80	175.4	
4	72.25	339	17.73	79.2	
5	73.41	354	25.22	108.0	
6	74.85	372	39.97	163.0	
7	76.61	393	58.69	226.0	
8	77.77	411	27.34	100.8	
9	78.97	432	24.97	87.5	
10	79.53	442	47.43	162.5	
11	80.92	467	37.45	121.6	
12	82.40	493	24.83	76.3	
13	113.00	10,380	75.00	10.9	Upper Marker

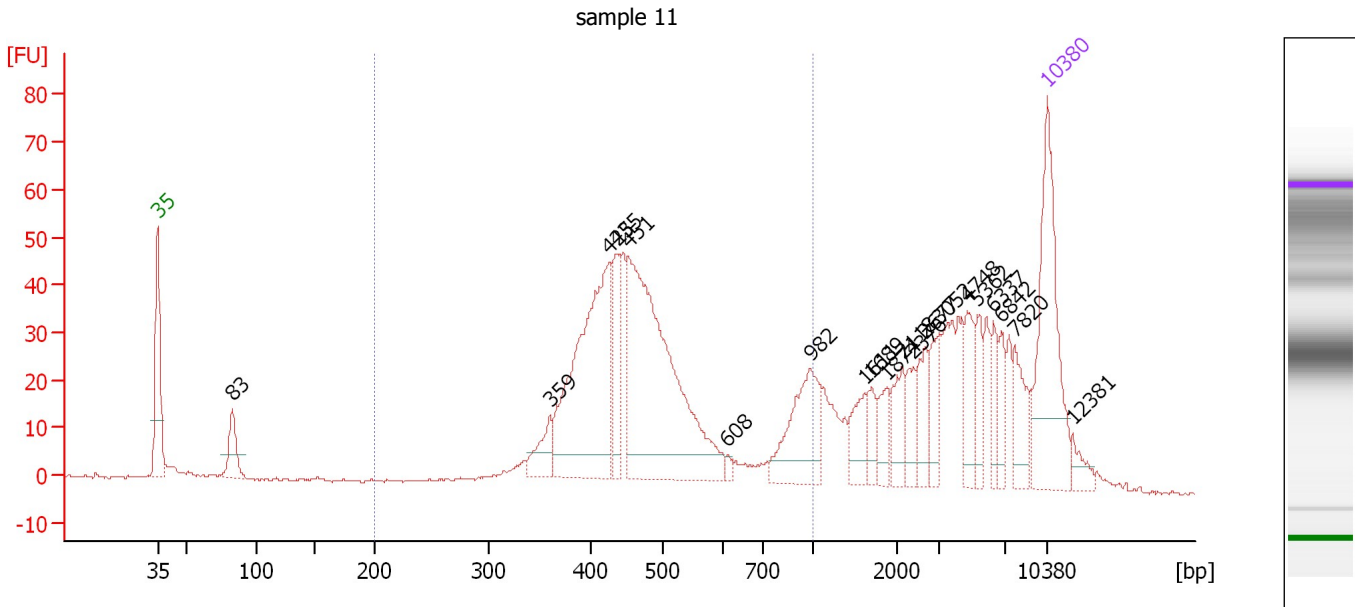
Region table for sample 10 : sample 10

From [bp]	To [bp]	Average Size [bp]	Molarity [pmol/l]	Conc. [pg/μl]	Corr. Area	% of Total	Size distribution in CV [%]	Color
200	1,000	453	3,165.8	825.35	537.7	74	34.7	Blue

Assay Class: High Sensitivity DNA Assay
 Data Path: C:\...ents and Settings\Bioanalyzer\2014-02-07\2014-02-07_002.xad

Created: 2/7/2014 1:47:48 PM
 Modified: 2/7/2014 2:53:46 PM

Electropherogram Summary Continued ...



Overall Results for sample 11 : sample 11

Number of peaks found: 20 Corr. Area 1: 631.0
 Noise: 0.3

Peak table for sample 11 : sample 11

Peak	Aligned Migration Time [s]	Size [bp]	Conc. [pg/μl]	Molarity [pmol/l]	Observations
1	43.00	35	125.00	5,411.3	Lower Marker
2	48.88	83	27.56	505.2	
3	73.87	359	21.22	89.4	
4	78.54	425	164.40	586.5	
5	79.10	435	33.82	117.9	
6	80.03	451	217.71	731.5	
7	87.77	608	2.98	7.4	
8	94.39	982	52.54	81.1	
9	98.64	1,611	18.06	17.0	
10	99.15	1,689	10.64	9.5	
11	100.36	1,874	13.51	10.9	
12	101.57	2,118	18.67	13.4	
13	102.41	2,376	14.04	9.0	
14	103.39	2,677	18.05	10.2	
15	104.51	3,052	18.14	9.0	
16	106.70	4,748	22.09	7.0	
17	107.50	5,362	15.09	4.3	
18	108.76	6,337	13.20	3.2	
19	109.41	6,842	12.42	2.7	
20	110.44	7,820	21.23	4.1	
21	113.00	10,380	75.00	10.9	Upper Marker
22	115.01	12,381	0.00	0.0	

Assay Class: High Sensitivity DNA Assay
Data Path: C:\...ents and Settings\Bioanalyzer\2014-02-07\2014-02-07_002.xad

Created: 2/7/2014 1:47:48 PM
Modified: 2/7/2014 2:53:46 PM

Electropherogram Summary Continued ...

... Region table for sample 11 : sample 11

From [bp]	To [bp]	Average Size [bp]	Molarity [pmol/l]	Conc. [pg/μl]	Corr. Area	% of Total	Size distribution in CV [%]	Color
200	1,000	500	1,952.3	585.94	631.0	55	31.3	■

Assay Class: High Sensitivity DNA Assay
Data Path: C:\...ents and Settings\Bioanalyzer\2014-02-07\2014-02-07_002.xad

Created: 2/7/2014 1:47:48 PM
Modified: 2/7/2014 2:53:46 PM

Gel Image

