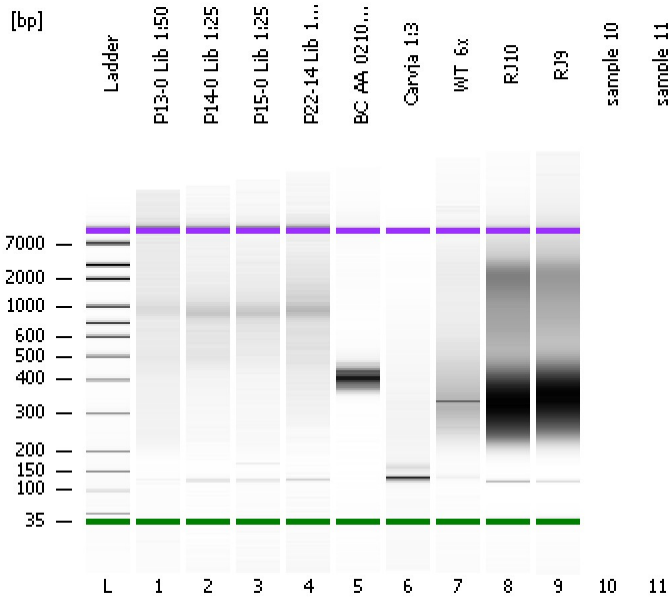


Assay Class: High Sensitivity DNA Assay
Data Path: C:\...ents and Settings\Bioanalyzer\2014-02-10\2014-02-10_003.xad

Created: 2/10/2014 1:38:23 PM
Modified: 2/10/2014 2:16:35 PM

Electrophoresis File Run Summary



Instrument Information:

Instrument Name: DE13701086 Firmware: C.01.069
Serial#: DE13701086 Type: G2938B

Assay Information:

Assay Origin Path: C:\Program Files\Agilent\2100 bioanalyzer\2100 expert\assays\dsDNA\High Sensitivity DNA.xsy
Assay Class: High Sensitivity DNA Assay
Version: 1.03
Assay Comments: Copyright © 2003-2010 Agilent Technologies

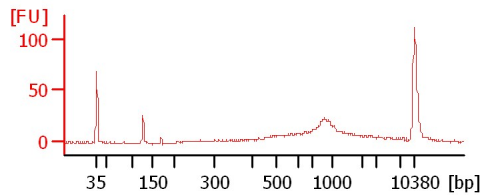
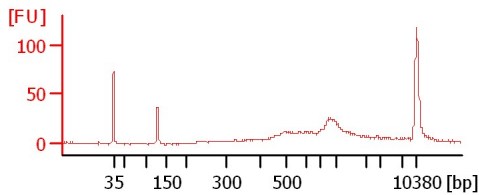
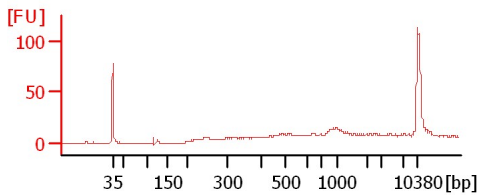
Chip Information:

Chip Lot #: Reagent Kit Lot #: Chip Comments:

P13-0 Lib 1:50

P14-0 Lib 1:25

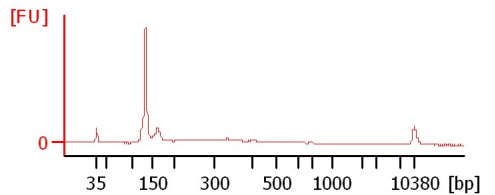
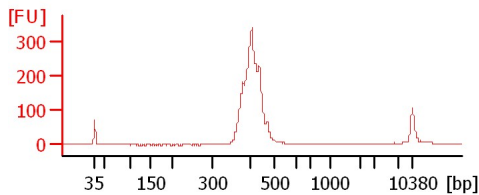
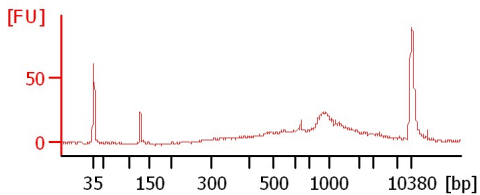
P15-0 Lib 1:25



P22-14 Lib 1:25

BC_AA_021014 1:2

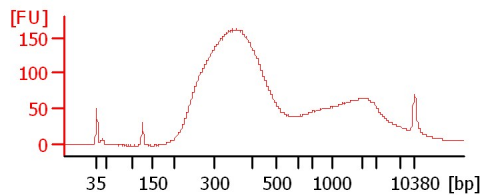
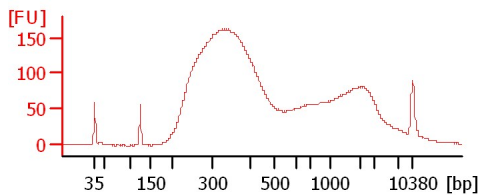
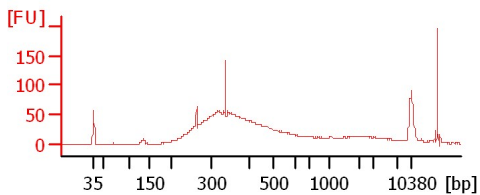
Carvja 1:3



WT_6x

RJ10

RJ9



Assay Class: High Sensitivity DNA Assay
Data Path: C:\...ents and Settings\Bioanalyzer\2014-02-10\2014-02-10_003.xad

Created: 2/10/2014 1:38:23 PM
Modified: 2/10/2014 2:16:35 PM

Electrophoresis File Run Summary (Chip Summary)

Sample Name	Sample Comment	Rest. Digest	Status	Observation	Result Label	Result Color
P13-0 Lib 1:50		<input type="checkbox"/>	✓			
P14-0 Lib 1:25		<input type="checkbox"/>	✓			
P15-0 Lib 1:25		<input type="checkbox"/>	✓			
P22-14 Lib 1:25		<input type="checkbox"/>	✓			
BC_AA_021014 1:2		<input type="checkbox"/>	✓			
Carvja 1:3		<input type="checkbox"/>	✓			
WT_6x		<input type="checkbox"/>	✓			
RJ10		<input type="checkbox"/>	✓			
RJ9		<input type="checkbox"/>	✓			
sample 10		<input type="checkbox"/>				
sample 11		<input type="checkbox"/>				
Ladder		<input type="checkbox"/>	✓			

Chip Lot #

Reagent Kit Lot #

Chip Comments :

Assay Class: High Sensitivity DNA Assay
Data Path: C:\...ents and Settings\Bioanalyzer\2014-02-10\2014-02-10_003.xad

Created: 2/10/2014 1:38:23 PM
Modified: 2/10/2014 2:16:35 PM

Electrophoresis Assay Details

General Analysis Settings

Number of Available Sample and Ladder Wells (Max.) : 12
Minimum Visible Range [s] : 32
Maximum Visible Range [s] : 138
Start Analysis Time Range [s] : 33
End Analysis Time Range [s] : 137.5
Ladder Concentration [pg/μl] : 1950
Uses Standard Area for Ladder Fragments
Lower Marker Concentration [pg/μl] : 125
Upper Marker Concentration [pg/μl] : 75
Used Upper Marker for Quantitation
Standard Curve Fit is Point to Point
Show Data Aligned to Lower and Upper Marker

Integrator Settings

Integration Start Time [s] : 33.05
Integration End Time [s] : 137
Slope Threshold : 0.8
Height Threshold [FU] : 5
Area Threshold : 0.1
Width Threshold [s] : 0.6
Baseline Plateau [s] : 0.5

Filter Settings

Filter Width [s] : 0.5
Polynomial Order : 4

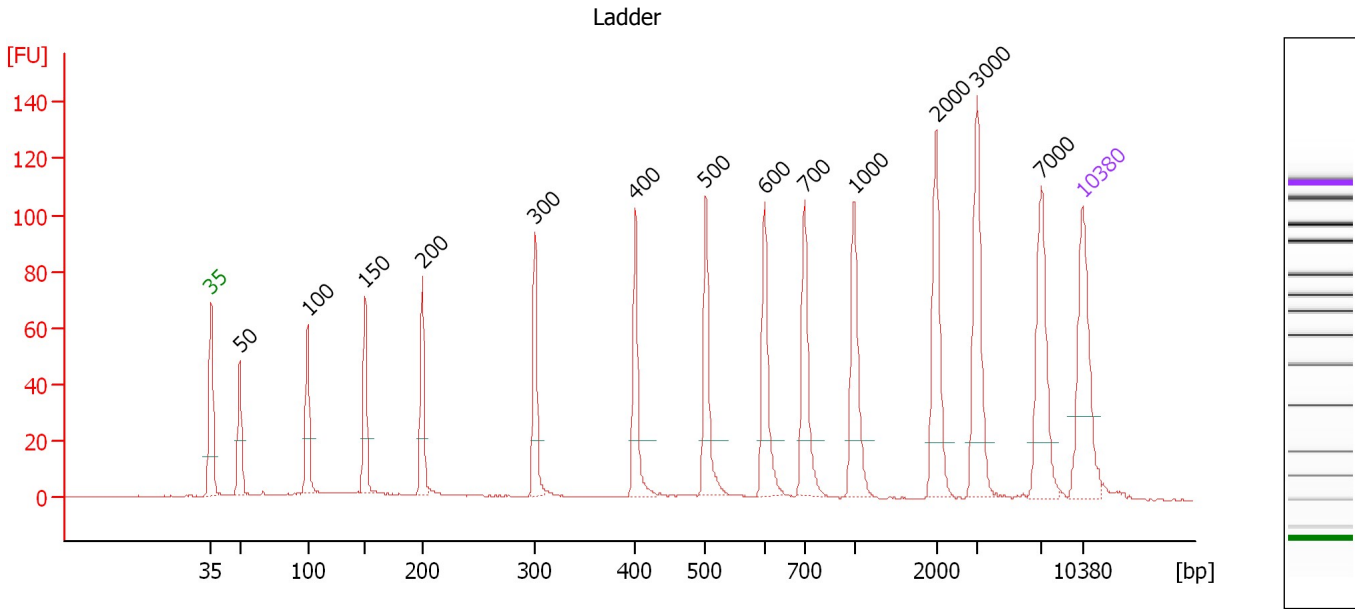
Ladder

Ladder Peak	Size	Area
1	35	160
2	50	210
3	100	208
4	150	221
5	200	242
6	300	270
7	400	305
8	500	306
9	600	336
10	700	321
11	1000	366
12	2000	413
13	3000	411
14	7000	400
15	10380	214

Assay Class: High Sensitivity DNA Assay
 Data Path: C:\...ents and Settings\Bioanalyzer\2014-02-10\2014-02-10_003.xad

Created: 2/10/2014 1:38:23 PM
 Modified: 2/10/2014 2:16:35 PM

Electropherogram Summary



Overall Results for Ladder

Noise: 0.2

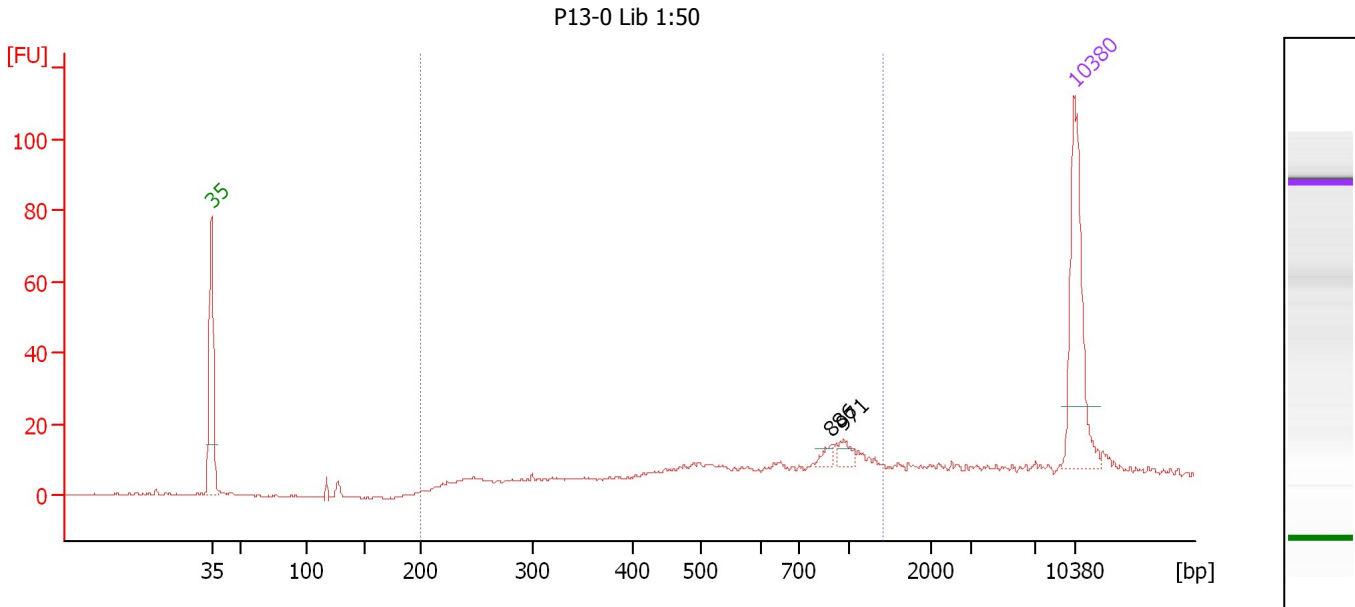
Peak table for Ladder

Peak	Aligned Migration Time [s]	Size [bp]	Conc. [pg/μl]	Molarity [pmol/l]	Observations
1	43.00	35	125.00	5,411.3	Lower Marker
2	45.31	50	150.00	4,545.5	Ladder Peak
3	50.75	100	150.00	2,272.7	Ladder Peak
4	55.38	150	150.00	1,515.2	Ladder Peak
5	59.96	200	150.00	1,136.4	Ladder Peak
6	69.05	300	150.00	757.6	Ladder Peak
7	77.10	400	150.00	568.2	Ladder Peak
8	82.76	500	150.00	454.5	Ladder Peak
9	87.47	600	150.00	378.8	Ladder Peak
10	90.68	700	150.00	324.7	Ladder Peak
11	94.66	1,000	150.00	227.3	Ladder Peak
12	101.26	2,000	150.00	113.6	Ladder Peak
13	104.56	3,000	150.00	75.8	Ladder Peak
14	109.70	7,000	150.00	32.5	Ladder Peak
15	113.00	10,380	75.00	10.9	Upper Marker

Assay Class: High Sensitivity DNA Assay
 Data Path: C:\...ents and Settings\Bioanalyzer\2014-02-10\2014-02-10_003.xad

Created: 2/10/2014 1:38:23 PM
 Modified: 2/10/2014 2:16:35 PM

Electropherogram Summary Continued ...



Overall Results for sample 1 : P13-0 Lib 1:50

Number of peaks found: 2 Corr. Area 1: 155.5
 Noise: 0.2

Peak table for sample 1 : P13-0 Lib 1:50

Peak	Aligned Migration Time [s]	Size [bp]	Conc. [pg/μl]	Molarity [pmol/l]	Observations
1	43.00	35	125.00	5,411.3	Lower Marker
2	93.15	886	5.69	9.7	
3	94.28	971	8.71	13.6	
4	113.00	10,380	75.00	10.9	Upper Marker

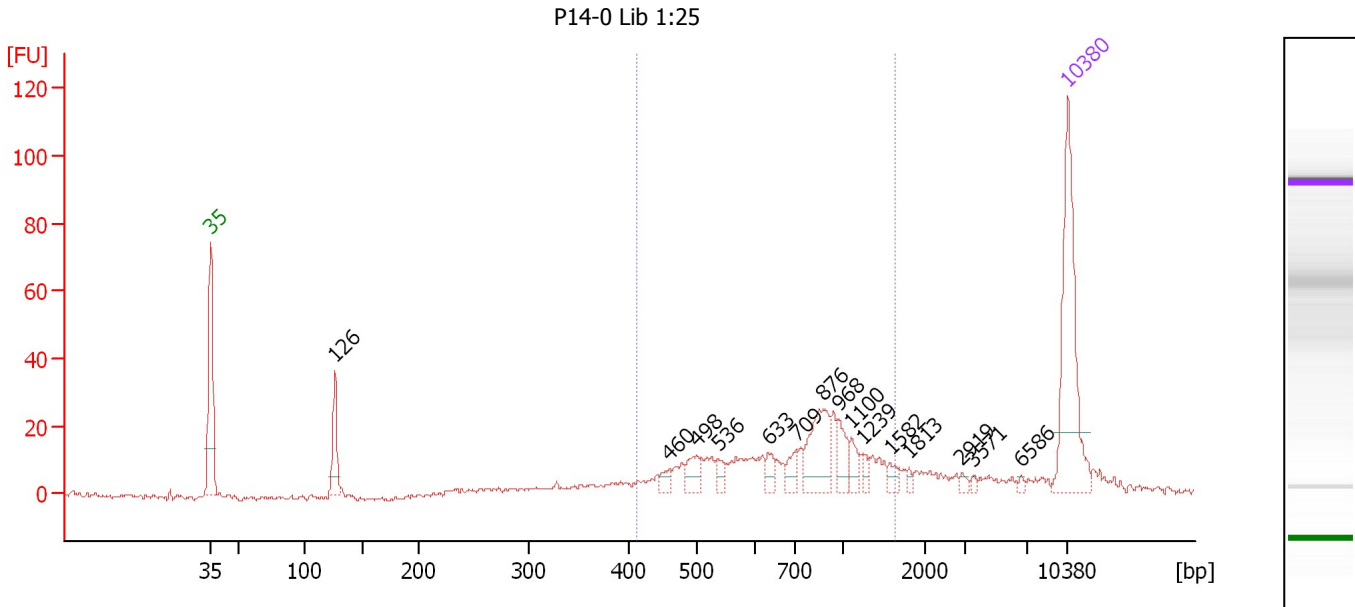
Region table for sample 1 : P13-0 Lib 1:50

From [bp]	To [bp]	Average Size [bp]	Molarity [pmol/l]	Conc. [pg/μl]	Corr. Area	% of Total	Size distribution in CV [%]	Color
200	1,432	660	485.1	152.41	155.5	75	45.5	Blue

Assay Class: High Sensitivity DNA Assay
 Data Path: C:\...ents and Settings\Bioanalyzer\2014-02-10\2014-02-10_003.xad

Created: 2/10/2014 1:38:23 PM
 Modified: 2/10/2014 2:16:35 PM

Electropherogram Summary Continued ...



Overall Results for sample 2 : P14-0 Lib 1:25

Number of peaks found: 15 Corr. Area 1: 264.0
 Noise: 0.6

Peak table for sample 2 : P14-0 Lib 1:25

Peak	Aligned Migration Time [s]	Size [bp]	Conc. [pg/μl]	Molarity [pmol/l]	Observations
1	43.00	35	125.00	5,411.3	Lower Marker
2	53.14	126	34.14	411.2	
3	80.48	460	7.29	24.0	
4	82.66	498	13.68	41.6	
5	84.44	536	7.31	20.7	
6	88.53	633	8.57	20.5	
7	90.80	709	10.25	21.9	
8	93.02	876	39.40	68.1	
9	94.24	968	15.13	23.7	
10	95.33	1,100	9.06	12.5	
11	96.24	1,239	4.75	5.8	
12	98.50	1,582	5.40	5.2	
13	100.03	1,813	2.48	2.1	
14	104.29	2,919	2.53	1.3	
15	105.29	3,571	1.59	0.7	
16	109.17	6,586	1.54	0.4	
17	113.00	10,380	75.00	10.9	Upper Marker

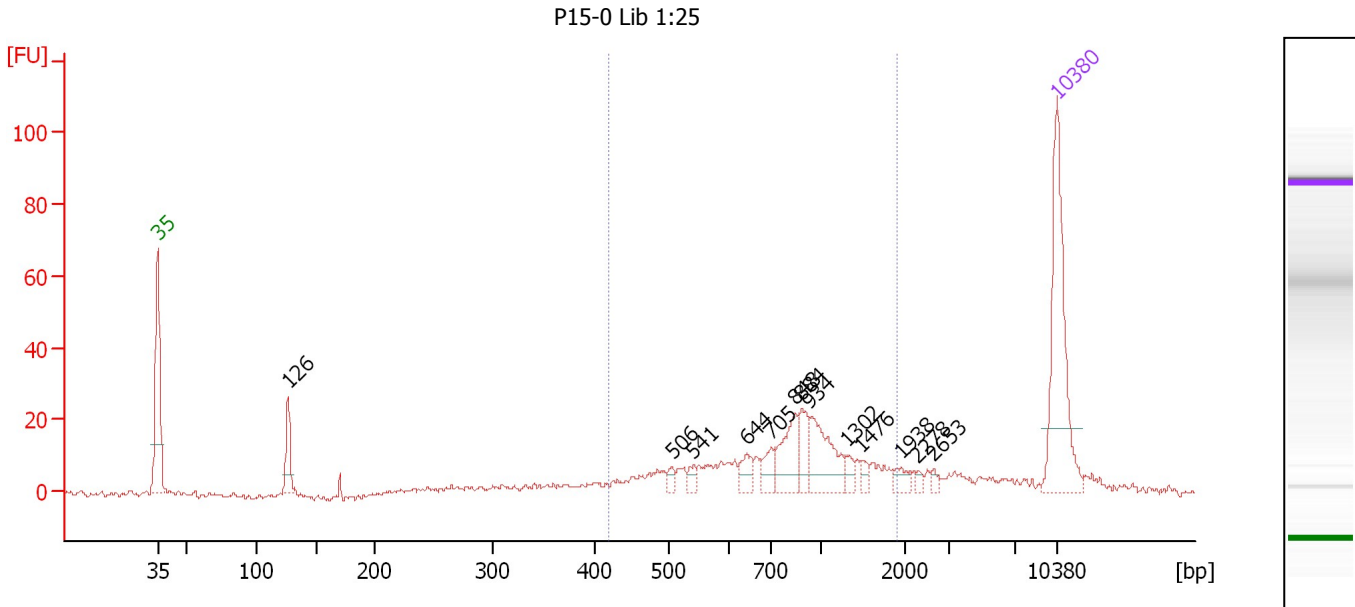
Region table for sample 2 : P14-0 Lib 1:25

From [bp]	To [bp]	Average Size [bp]	Molarity [pmol/l]	Conc. [pg/μl]	Corr. Area	% of Total	Size distribution in CV [%]	Color
412	1,638	803	461.4	209.48	264.0	69	36.6	Blue

Assay Class: High Sensitivity DNA Assay
 Data Path: C:\...ents and Settings\Bioanalyzer\2014-02-10\2014-02-10_003.xad

Created: 2/10/2014 1:38:23 PM
 Modified: 2/10/2014 2:16:35 PM

Electropherogram Summary Continued ...



Overall Results for sample 3 : P15-0 Lib 1:25

Number of peaks found: 13 Corr. Area 1: 234.1
 Noise: 0.7

Peak table for sample 3 : P15-0 Lib 1:25

Peak	Aligned Migration Time [s]	Size [bp]	Conc. [pg/μl]	Molarity [pmol/l]	Observations
1	43.00	35	125.00	5,411.3	Lower Marker
2	53.16	126	27.21	327.2	
3	83.06	506	5.29	15.8	
4	84.69	541	5.27	14.8	
5	88.89	644	11.83	27.8	
6	90.74	705	12.32	26.5	
7	92.64	848	30.02	53.7	
8	93.13	884	17.63	30.2	
9	93.79	934	37.72	61.2	
10	96.66	1,302	5.39	6.3	
11	97.81	1,476	4.82	5.0	
12	100.85	1,938	6.08	4.8	
13	102.18	2,278	2.68	1.8	
14	103.42	2,653	2.74	1.6	
15	113.00	10,380	75.00	10.9	Upper Marker

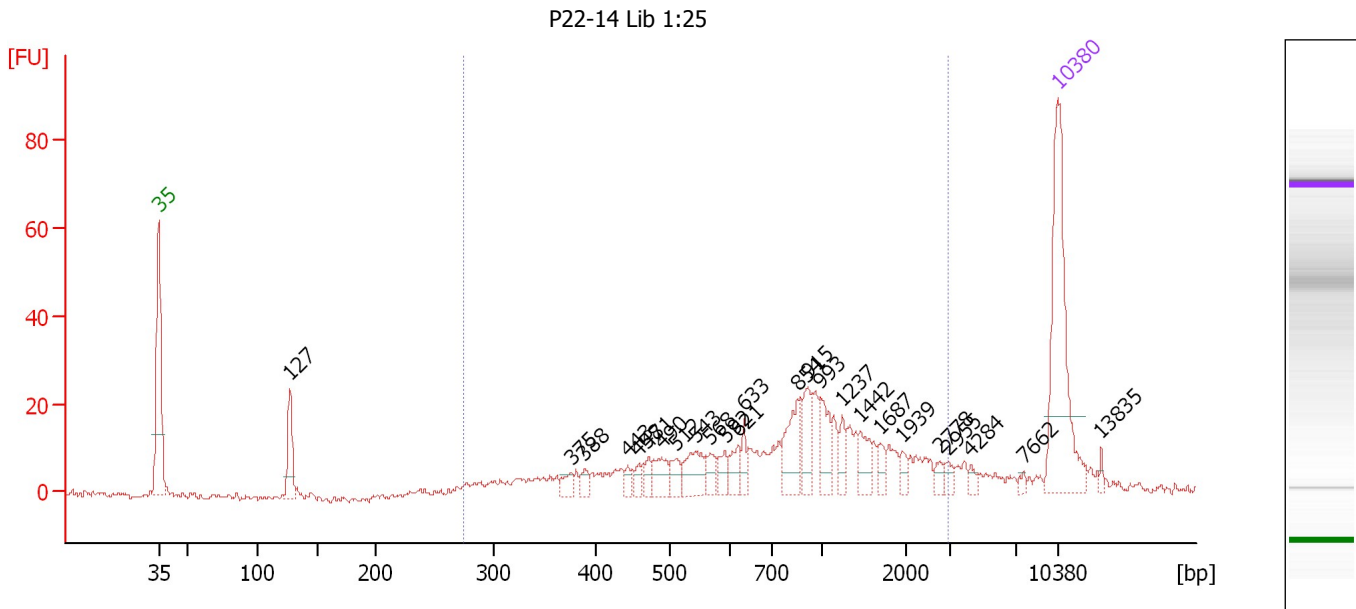
Region table for sample 3 : P15-0 Lib 1:25

From [bp]	To [bp]	Average Size [bp]	Molarity [pmol/l]	Conc. [pg/μl]	Corr. Area	% of Total	Size distribution in CV [%]	Color
419	1,906	888	412.1	202.37	234.1	70	40.0	Blue

Assay Class: High Sensitivity DNA Assay
 Data Path: C:\...ents and Settings\Bioanalyzer\2014-02-10\2014-02-10_003.xad

Created: 2/10/2014 1:38:23 PM
 Modified: 2/10/2014 2:16:35 PM

Electropherogram Summary Continued ...



Overall Results for sample 4 : P22-14 Lib 1:25

Number of peaks found: 25 Corr. Area 1: 336.6
 Noise: 0.7

Peak table for sample 4 : P22-14 Lib 1:25

Peak	Aligned Migration Time [s]	Size [bp]	Conc. [pg/μl]	Molarity [pmol/l]	Observations
1	43.00	35	125.00	5,411.3	Lower Marker
2	53.25	127	29.72	354.6	
3	75.10	375	7.06	28.5	
4	76.13	388	5.87	22.9	
5	79.51	443	5.48	18.8	
6	80.36	458	6.59	21.8	
7	81.12	471	7.73	24.8	
8	82.20	490	14.26	44.1	
9	83.33	512	9.82	29.1	
10	84.77	543	20.11	56.1	
11	85.98	568	9.77	26.1	
12	87.10	592	9.00	23.0	
13	88.14	621	10.31	25.2	
14	88.54	633	8.36	20.0	
15	92.72	854	27.32	48.5	
16	93.53	915	19.20	31.8	
17	94.57	993	17.17	26.2	
18	96.23	1,237	8.56	10.5	
19	97.58	1,442	12.07	12.7	
20	99.20	1,687	5.90	5.3	
21	100.86	1,939	5.03	3.9	
22	103.83	2,778	3.84	2.1	
23	104.41	2,955	4.31	2.2	
24	106.21	4,284	2.99	1.1	
25	110.35	7,662	2.14	0.4	

Assay Class: High Sensitivity DNA Assay
Data Path: C:\...ents and Settings\Bioanalyzer\2014-02-10\2014-02-10_003.xad

Created: 2/10/2014 1:38:23 PM
Modified: 2/10/2014 2:16:35 PM

Electropherogram Summary Continued ...**... Peak table for sample 4 : P22-14 Lib 1:25**

Peak	Aligned Migration Time [s]	Size [bp]	Conc. [pg/ μ l]	Molarity [pmol/l]	Observations
26	113.00	10,380	75.00	10.9	Upper Marker
27	116.37	13,835	0.00	0.0	

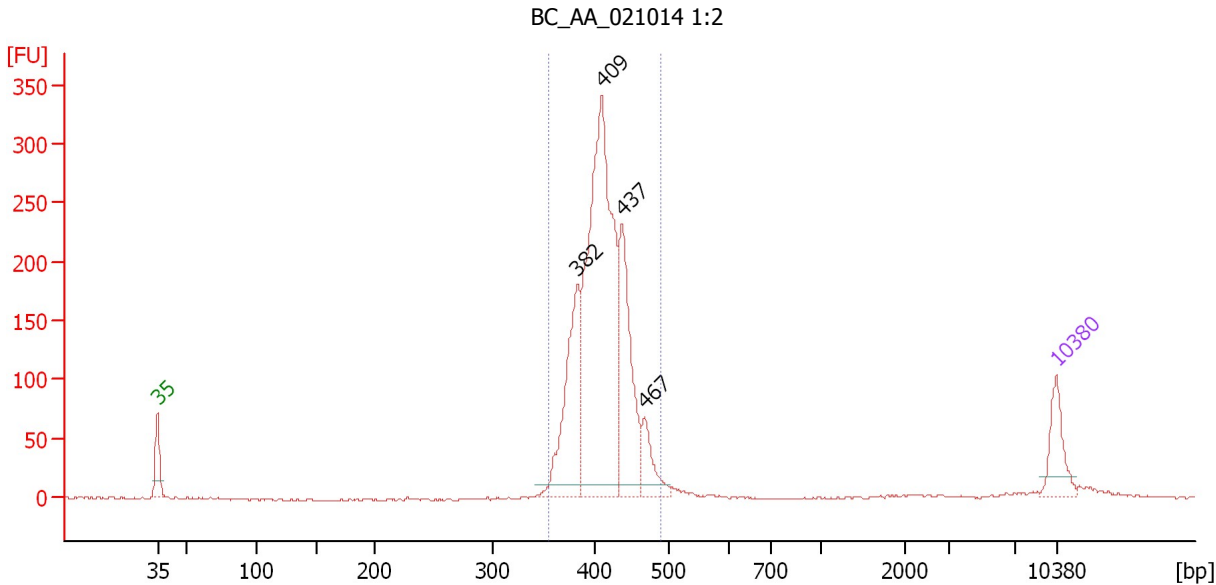
Region table for sample 4 : P22-14 Lib 1:25

From [bp]	To [bp]	Average Size [bp]	Molarity [pmol/l]	Conc. [pg/ μ l]	Corr. Area	% of Total	Size distribution in CV [%]	Color
275	2,986	993	731.6	321.98	336.6	86	59.3	

Assay Class: High Sensitivity DNA Assay
 Data Path: C:\...ents and Settings\Bioanalyzer\2014-02-10\2014-02-10_003.xad

Created: 2/10/2014 1:38:23 PM
 Modified: 2/10/2014 2:16:35 PM

Electropherogram Summary Continued ...



Setpoint Deviations for sample 5 : BC AA 021014 1:2

Height Threshold [FU] : 10

Overall Results for sample 5 : BC AA 021014 1:2

Number of peaks found: 4 Corr. Area 1: 1,721.7
 Noise: 0.9

Peak table for sample 5 : BC AA 021014 1:2

Peak	Aligned Migration Time [s]	Size [bp]	Conc. [pg/μl]	Molarity [pmol/l]	Observations
1	43.00	35	125.00	5,411.3	Lower Marker
2	75.68	382	330.86	1,311.2	
3	77.59	409	962.20	3,567.5	
4	79.18	437	327.46	1,135.7	
5	80.92	467	86.86	281.5	
6	113.00	10,380	75.00	10.9	Upper Marker

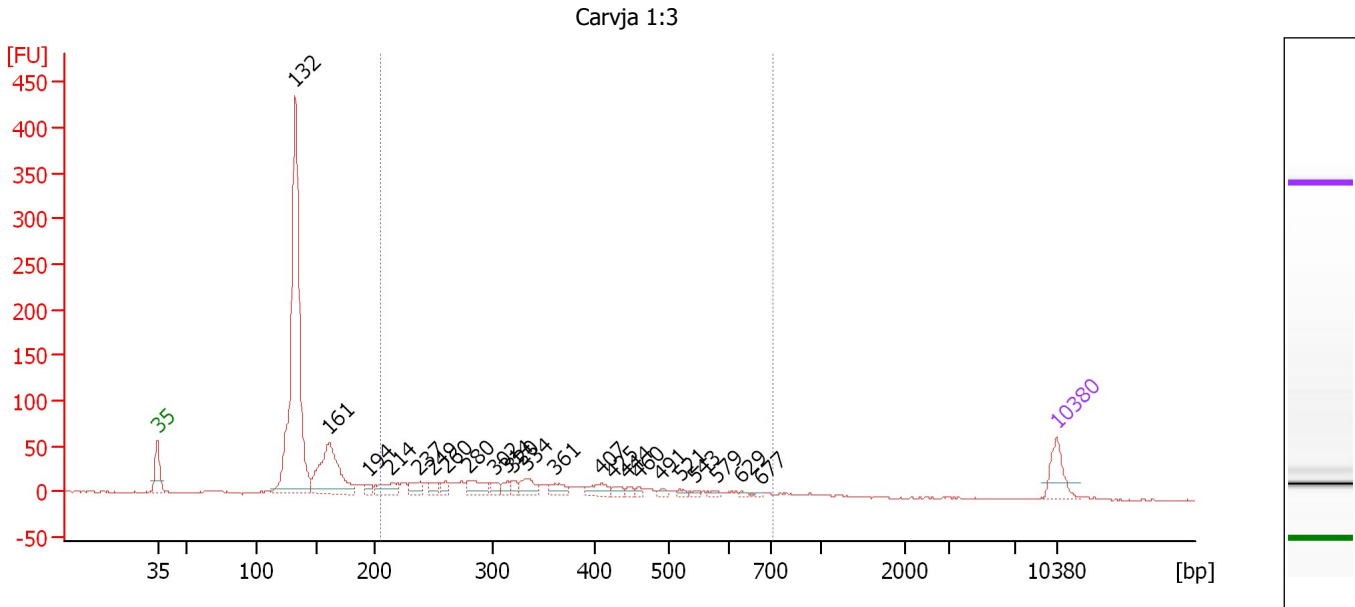
Region table for sample 5 : BC AA 021014 1:2

From [bp]	To [bp]	Average Size [bp]	Molarity [pmol/l]	Conc. [pg/μl]	Corr. Area	% of Total	Size distribution in CV [%]	Color
354	490	412	6,285.3	1,700.18	1,721.7	96	6.6	Blue

Assay Class: High Sensitivity DNA Assay
 Data Path: C:\...ents and Settings\Bioanalyzer\2014-02-10\2014-02-10_003.xad

Created: 2/10/2014 1:38:23 PM
 Modified: 2/10/2014 2:16:35 PM

Electropherogram Summary Continued ...



Overall Results for sample 6 : Carvja 1:3

Number of peaks found: 23 Corr. Area 1: 427.6
 Noise: 0.9

Peak table for sample 6 : Carvja 1:3

Peak	Aligned Migration Time [s]	Size [bp]	Conc. [pg/μl]	Molarity [pmol/l]	Observations
1	43.00	35	125.00	5,411.3	Lower Marker
2	53.73	132	1,408.36	16,140.8	
3	56.35	161	386.24	3,644.8	
4	59.42	194	19.53	152.4	
5	61.21	214	64.98	460.6	
6	63.37	237	46.54	297.0	
7	64.42	249	31.05	188.9	
8	65.43	260	29.32	170.7	
9	67.22	280	68.07	368.5	
10	69.24	302	26.51	132.8	
11	70.20	314	25.62	123.5	
12	70.66	320	24.08	114.0	
13	71.81	334	59.32	268.9	
14	73.96	361	40.33	169.2	
15	77.50	407	47.59	177.2	
16	78.50	425	19.90	71.0	
17	79.61	444	13.23	45.1	
18	80.48	460	12.08	39.8	
19	82.22	491	11.58	35.8	
20	83.73	521	10.05	29.2	
21	84.79	543	8.86	24.7	
22	86.49	579	9.16	24.0	
23	88.41	629	6.77	16.3	
24	89.93	677	5.72	12.8	
25	113.00	10,380	75.00	10.9	Upper Marker

Assay Class: High Sensitivity DNA Assay
Data Path: C:\...ents and Settings\Bioanalyzer\2014-02-10\2014-02-10_003.xad

Created: 2/10/2014 1:38:23 PM
Modified: 2/10/2014 2:16:35 PM

Electropherogram Summary Continued ...

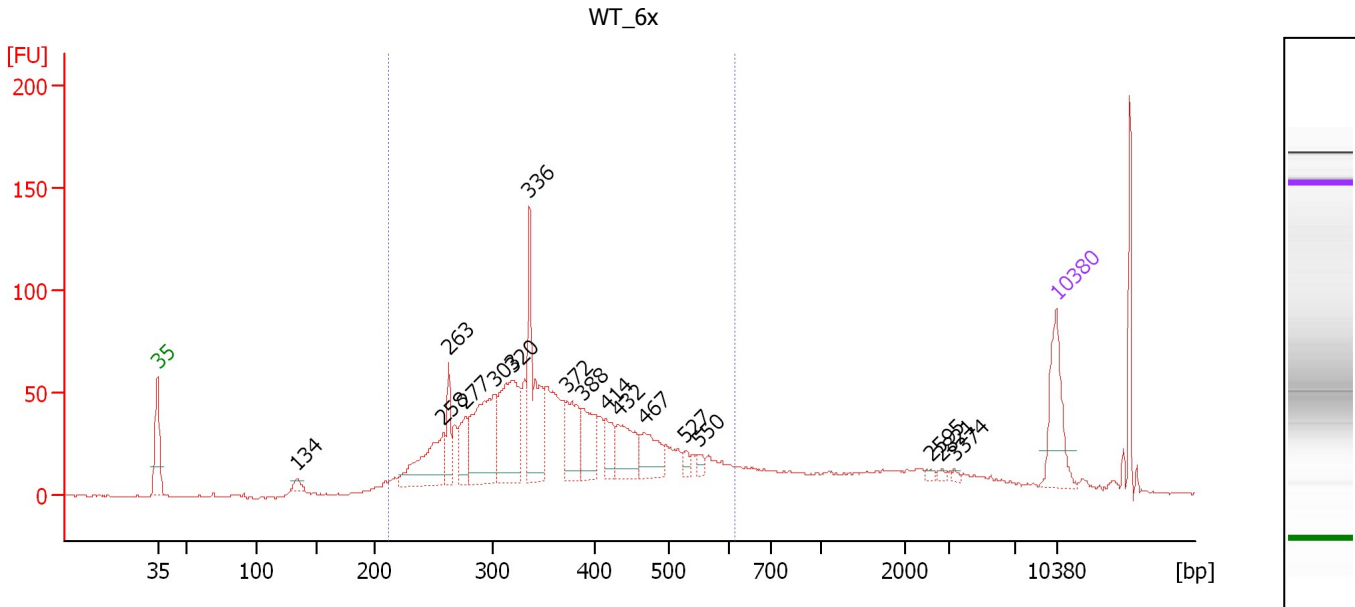
... Region table for sample 6 : Carvja 1:3

From [bp]	To [bp]	Average Size [bp]	Molarity [pmol/l]	Conc. [pg/μl]	Corr. Area	% of Total	Size distribution in CV [%]	Color
204	718	362	3,450.0	722.42	427.6	32	32.2	■

Assay Class: High Sensitivity DNA Assay
 Data Path: C:\...ents and Settings\Bioanalyzer\2014-02-10\2014-02-10_003.xad

Created: 2/10/2014 1:38:23 PM
 Modified: 2/10/2014 2:16:35 PM

Electropherogram Summary Continued ...



Overall Results for sample 7 : WT_6x

Number of peaks found: 17 Corr. Area 1: 1,253.1
 Noise: 0.5

Peak table for sample 7 : WT_6x

Peak	Aligned Migration Time [s]	Size [bp]	Conc. [pg/μl]	Molarity [pmol/l]	Observations
1	43.00	35	125.00	5,411.3	Lower Marker
2	53.89	134	13.07	147.8	
3	65.25	258	128.46	753.9	
4	65.67	263	51.81	298.7	
5	66.97	277	52.99	289.7	
6	69.25	303	185.83	930.7	
7	70.69	320	181.74	859.3	
8	71.95	336	169.50	764.2	
9	74.84	372	88.81	361.8	
10	76.14	388	72.43	282.8	
11	77.91	414	39.71	145.2	
12	78.88	432	75.40	264.7	
13	80.89	467	60.26	195.5	
14	84.00	527	10.62	30.6	
15	85.12	550	10.16	28.0	
16	103.23	2,595	3.59	2.1	
17	103.97	2,821	3.16	1.7	
18	105.04	3,374	3.29	1.5	
19	113.00	10,380	75.00	10.9	Upper Marker

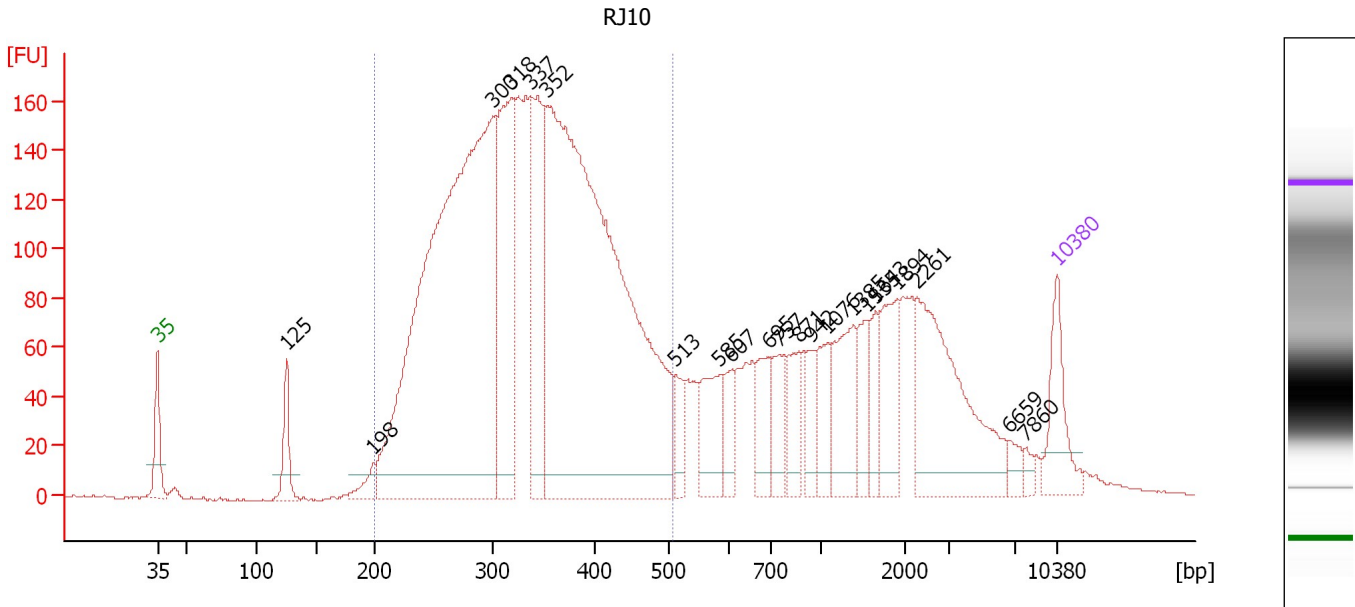
Region table for sample 7 : WT_6x

From [bp]	To [bp]	Average Size [bp]	Molarity [pmol/l]	Conc. [pg/μl]	Corr. Area	% of Total	Size distribution in CV [%]	Color
212	613	368	7,759.3	1,740.07	1,253.1	78	24.3	Blue

Assay Class: High Sensitivity DNA Assay
 Data Path: C:\...ents and Settings\Bioanalyzer\2014-02-10\2014-02-10_003.xad

Created: 2/10/2014 1:38:23 PM
 Modified: 2/10/2014 2:16:35 PM

Electropherogram Summary Continued ...



Setpoint Deviations for sample 8 : RJ10

Height Threshold [FU] : 10

Overall Results for sample 8 : RJ10

Number of peaks found: 21 Corr. Area 1: 3,609.1
 Noise: 0.4

Peak table for sample 8 : RJ10

Peak	Aligned Migration Time [s]	Size [bp]	Conc. [pg/μl]	Molarity [pmol/l]	Observations
1	43.00	35	125.00	5,411.3	Lower Marker
2	53.03	125	78.14	950.4	
3	59.79	198	32.72	250.2	
4	69.06	300	1,562.38	7,886.1	
5	70.53	318	367.43	1,748.6	
6	72.04	337	284.66	1,279.2	
7	73.27	352	1,571.11	6,754.2	
8	83.34	513	47.85	141.5	
9	86.75	585	100.86	261.3	
10	87.70	607	49.29	123.0	
11	90.53	695	74.92	163.2	
12	91.43	757	62.44	125.0	
13	92.95	871	64.65	112.5	
14	93.89	942	50.19	80.7	
15	95.17	1,076	62.38	87.8	
16	97.20	1,385	110.59	121.0	
17	98.20	1,535	52.18	51.5	
18	98.91	1,643	50.33	46.4	
19	100.56	1,894	93.56	74.9	
20	102.12	2,261	260.93	174.9	
21	109.26	6,659	17.64	4.0	
22	110.54	7,860	10.67	2.1	

Assay Class: High Sensitivity DNA Assay
Data Path: C:\...ents and Settings\Bioanalyzer\2014-02-10\2014-02-10_003.xad

Created: 2/10/2014 1:38:23 PM
Modified: 2/10/2014 2:16:35 PM

Electropherogram Summary Continued ...**... Peak table for sample 8 : RJ10**

Peak	Aligned Migration Time [s]	Size [bp]	Conc. [pg/ μ l]	Molarity [pmol/l]	Observations
23	113.00	10,380	75.00	10.9	Upper Marker

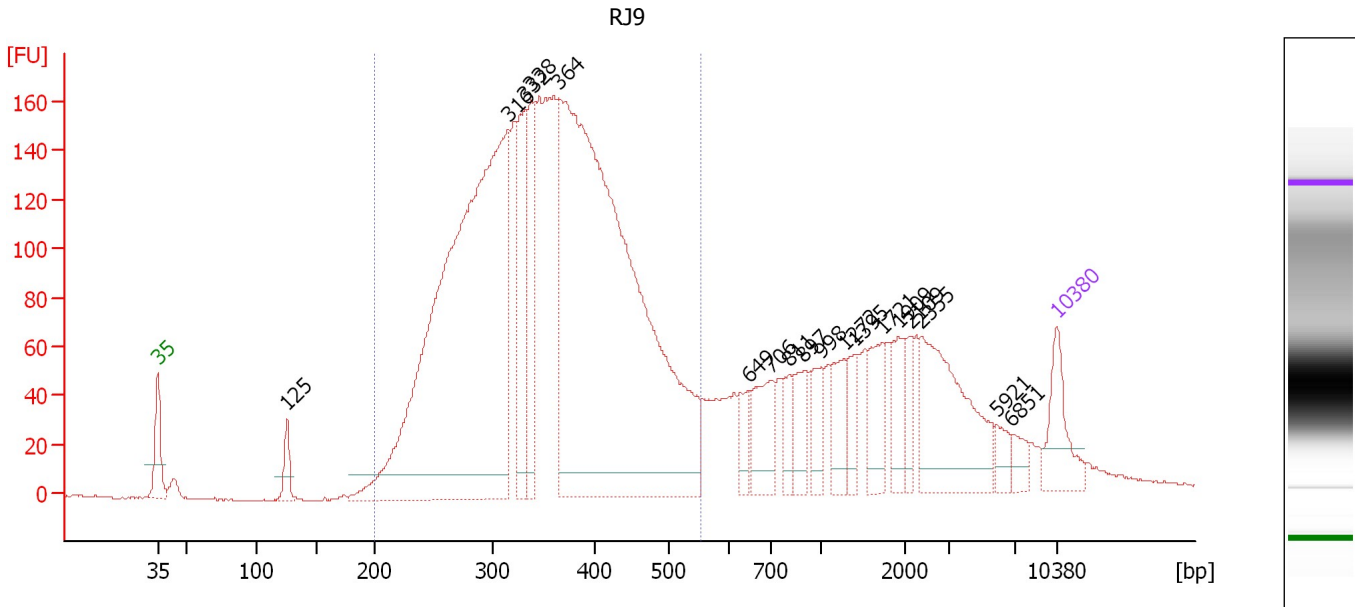
Region table for sample 8 : RJ10

From [bp]	To [bp]	Average Size [bp]	Molarity [pmol/l]	Conc. [pg/ μ l]	Corr. Area	% of Total	Size distribution in CV [%]	Color
200	506	338	19,193.0	4,033.17	3,609.1	68	20.4	

Assay Class: High Sensitivity DNA Assay
 Data Path: C:\...ents and Settings\Bioanalyzer\2014-02-10\2014-02-10_003.xad

Created: 2/10/2014 1:38:23 PM
 Modified: 2/10/2014 2:16:35 PM

Electropherogram Summary Continued ...



Setpoint Deviations for sample 9 : R9

Height Threshold [FU] : 10

Overall Results for sample 9 : R9

Number of peaks found: 18 Corr. Area 1: 3,469.1
 Noise: 0.5


Peak table for sample 9 : R9

Peak	Aligned Migration Time [s]	Size [bp]	Conc. [pg/μl]	Molarity [pmol/l]	Observations
1	43.00	35	125.00	5,411.3	Lower Marker
2	53.09	125	47.53	575.0	
3	70.30	316	1,617.34	7,764.9	
4	71.59	332	224.56	1,026.0	
5	72.12	338	173.80	778.8	
6	74.22	364	1,803.21	7,500.3	
7	89.05	649	46.20	107.8	
8	90.77	706	98.88	212.1	
9	92.15	811	42.04	78.5	
10	93.30	897	59.46	100.4	
11	94.64	998	55.37	84.1	
12	96.46	1,272	62.67	74.7	
13	97.27	1,395	48.56	52.7	
14	99.42	1,721	74.78	65.8	
15	100.66	1,909	57.09	45.3	
16	101.62	2,109	33.51	24.1	
17	102.43	2,355	223.26	143.6	
18	108.31	5,921	24.99	6.4	
19	109.51	6,851	24.76	5.5	
20	113.00	10,380	75.00	10.9	Upper Marker

Assay Class: High Sensitivity DNA Assay
Data Path: C:\...ents and Settings\Bioanalyzer\2014-02-10\2014-02-10_003.xad

Created: 2/10/2014 1:38:23 PM
Modified: 2/10/2014 2:16:35 PM

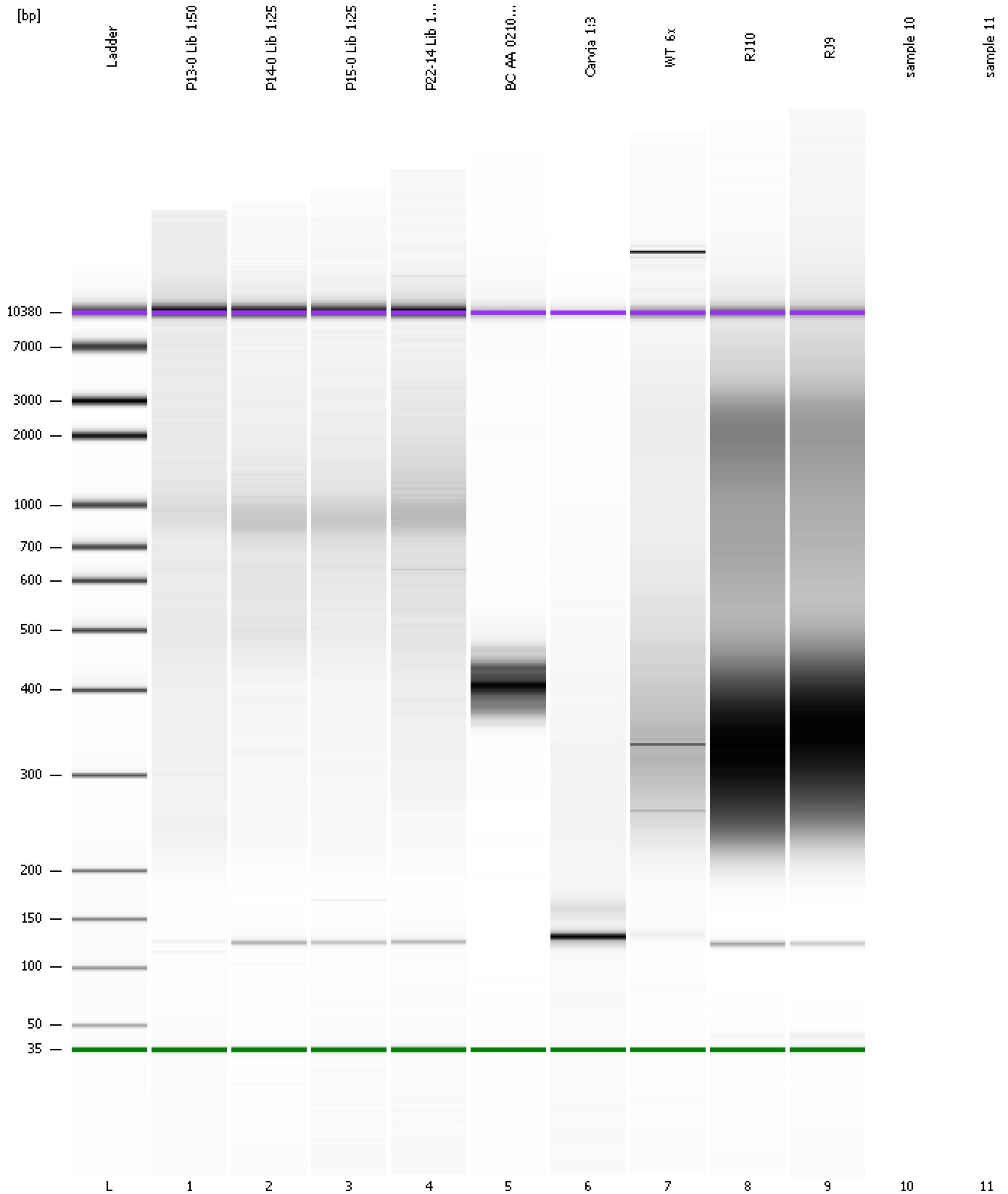
Electropherogram Summary Continued ...**... Region table for sample 9 : RJ9**

From [bp]	To [bp]	Average Size [bp]	Molarity [pmol/l]	Conc. [pg/μl]	Corr. Area	% of Total	Size distribution in CV [%]	Co lor
200	553	355	19,683.5	4,337.74	3,469.1	73	21.0	

Assay Class: High Sensitivity DNA Assay
Data Path: C:\...ents and Settings\Bioanalyzer\2014-02-10\2014-02-10_003.xad

Created: 2/10/2014 1:38:23 PM
Modified: 2/10/2014 2:16:35 PM

Gel Image



Assay Class: High Sensitivity DNA Assay
Data Path: C:\...ents and Settings\Bioanalyzer\2014-02-10\2014-02-10_003.xad

Created: 2/10/2014 1:38:23 PM
Modified: 2/10/2014 2:16:35 PM

Invalid Samples

Sample 10 has not been run, no results available.

Sample 11 has not been run, no results available.