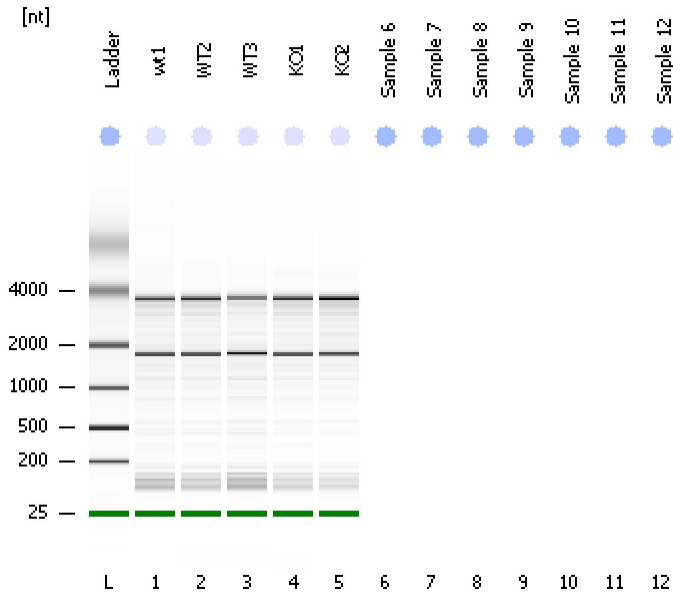


Assay Class: Eukaryote Total RNA Nano
Data Path: C:\...ents and Settings\Bioanalyzer\2014-02-12\2014-02-12_003.xad

Created: 2/12/2014 12:40:58 PM
Modified: 2/12/2014 12:55:16 PM

Electrophoresis File Run Summary



Instrument Information:

Instrument Name: DE13701086 Firmware: C.01.069
Serial#: DE13701086 Type: G2938B

Assay Information:

Assay Origin Path: C:\Program Files\Agilent\2100 bioanalyzer\2100 expert\assays\RNA\Eukaryote Total RNA Nano Series II.xsy

Assay Class: Eukaryote Total RNA Nano

Version: 2.6

Assay Comments: Total RNA Analysis ng sensitivity (Eukaryote)

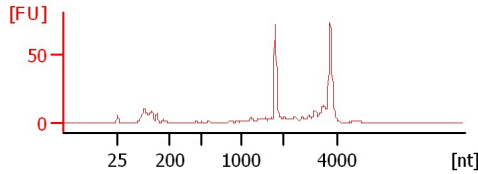
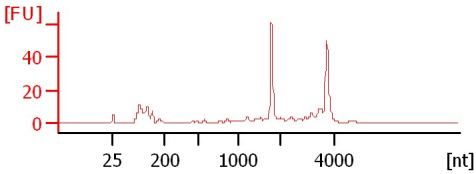
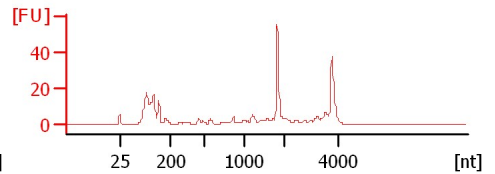
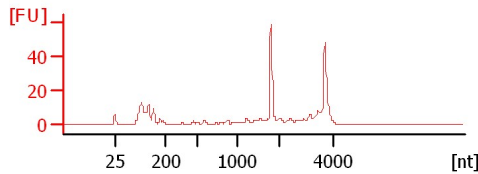
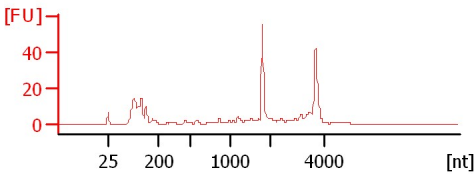
© Copyright 2003 - 2009 Agilent Technologies, Inc.

Chip Information:

Chip Lot #:

Reagent Kit Lot #:

Chip Comments:



Assay Class: Eukaryote Total RNA Nano
Data Path: C:\...ents and Settings\Bioanalyzer\2014-02-12\2014-02-12_003.xad

Created: 2/12/2014 12:40:58 PM
Modified: 2/12/2014 12:55:16 PM

Electrophoresis File Run Summary (Chip Summary)

Sample Name	Sample Comment	Status	Result Label	Result Color
wt1		✓	RIN: 7.50	
WT2		✓	RIN:8	
WT3		✓	RIN: 7.40	
KO1		✓	RIN: 7.90	
KO2		✓	RIN: 8.10	
Sample 6				
Sample 7				
Sample 8				
Sample 9				
Sample 10				
Sample 11				
Sample 12				
Ladder		✓	All Other Samples	

Chip Lot #

Reagent Kit Lot #

Chip Comments :

Assay Class: Eukaryote Total RNA Nano
Data Path: C:\...ents and Settings\Bioanalyzer\2014-02-12\2014-02-12_003.xad

Created: 2/12/2014 12:40:58 PM
Modified: 2/12/2014 12:55:16 PM

Electrophoresis Assay Details

General Analysis Settings

Number of Available Sample and Ladder Wells (Max.) : 13
Minimum Visible Range [s] : 17
Maximum Visible Range [s] : 70
Start Analysis Time Range [s] : 19
End Analysis Time Range [s] : 69
Ladder Concentration [ng/μl] : 150
Lower Marker Concentration [ng/μl] : 0
Upper Marker Concentration [ng/μl] : 0
Used Lower Marker for Quantitation
Standard Curve Fit is Logarithmic
Show Data Aligned to Lower Marker

Integrator Settings

Integration Start Time [s] : 19
Integration End Time [s] : 69
Slope Threshold : 0.6
Height Threshold [FU] : 0.5
Area Threshold : 0.2
Width Threshold [s] : 0.5
Baseline Plateau [s] : 6

Filter Settings

Filter Width [s] : 0.5
Polynomial Order : 4

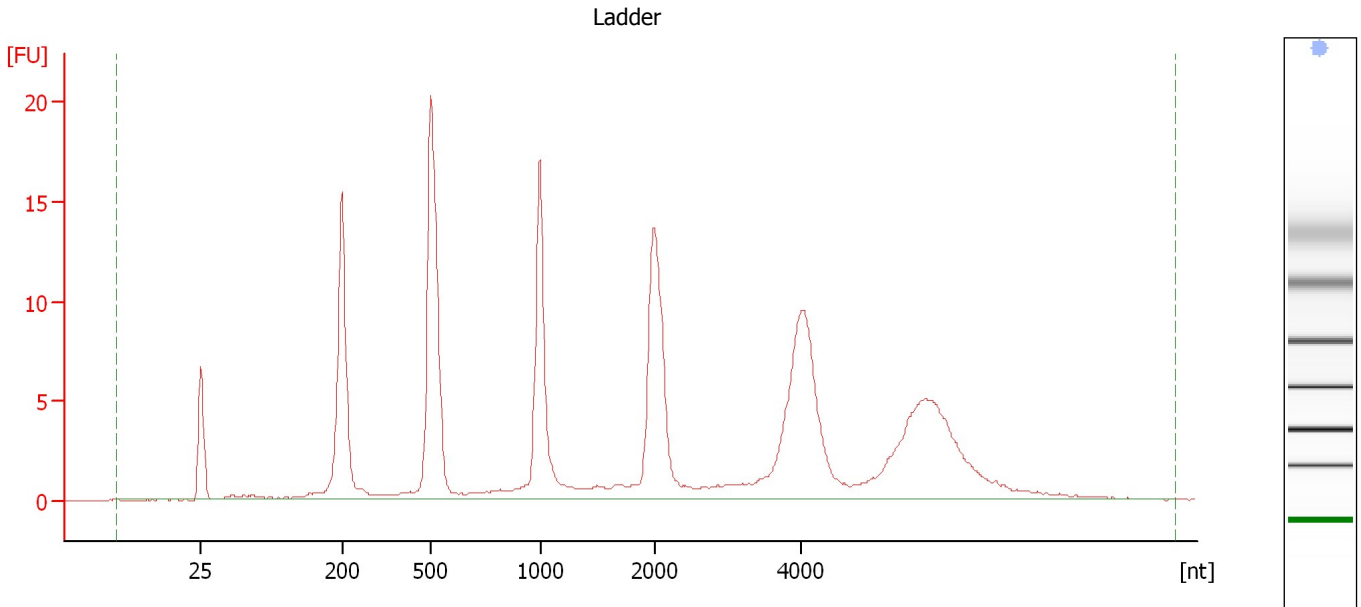
Ladder

Ladder Peak	Size
1	25
2	200
3	500
4	1000
5	2000
6	4000

Assay Class: Eukaryote Total RNA Nano
Data Path: C:\...ents and Settings\Bioanalyzer\2014-02-12\2014-02-12_003.xad

Created: 2/12/2014 12:40:58 PM
Modified: 2/12/2014 12:55:16 PM

Electropherogram Summary



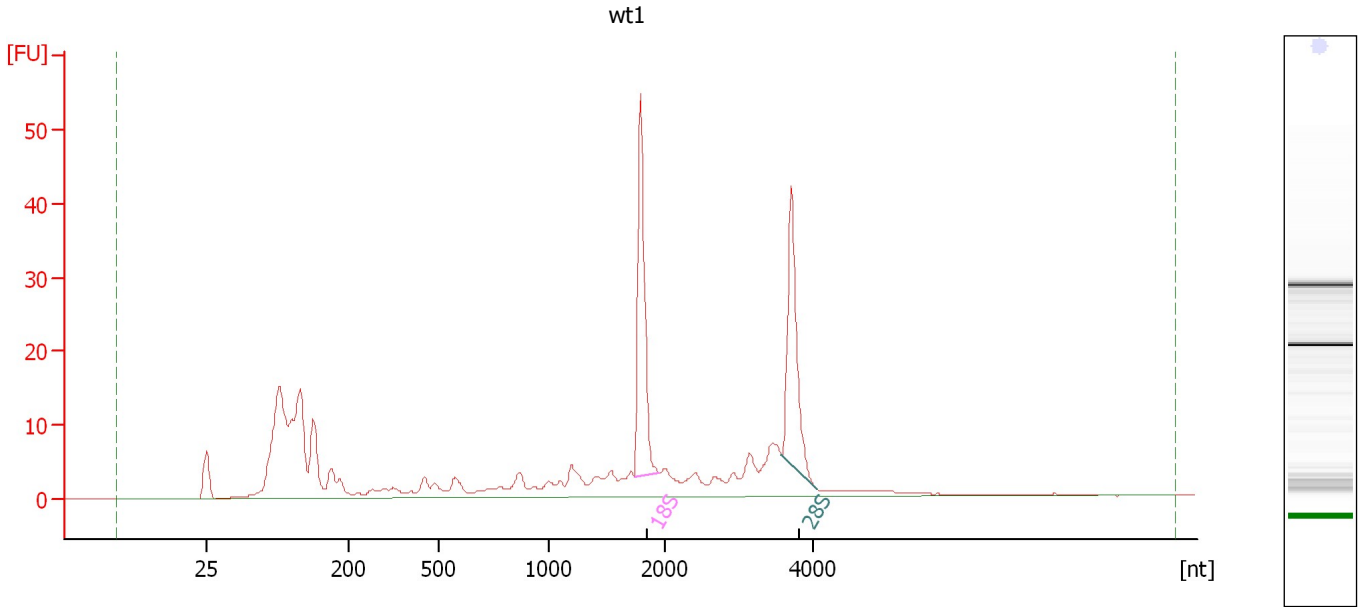
Overall Results for Ladder

RNA Area:	185.7	Result Flagging Color:	
RNA Concentration:	150 ng/ μ l	Result Flagging Label:	All Other Samples

Assay Class: Eukaryote Total RNA Nano
Data Path: C:\...ents and Settings\Bioanalyzer\2014-02-12\2014-02-12_003.xad

Created: 2/12/2014 12:40:58 PM
Modified: 2/12/2014 12:55:16 PM

Electropherogram Summary Continued ...



Overall Results for sample 1 : wt1

RNA Area: 303.1 RNA Integrity Number (RIN): 7.5 (B.02.08)
RNA Concentration: 245 ng/μl Result Flagging Color:
rRNA Ratio [28s / 18s]: 0.8 Result Flagging Label: RIN: 7.50

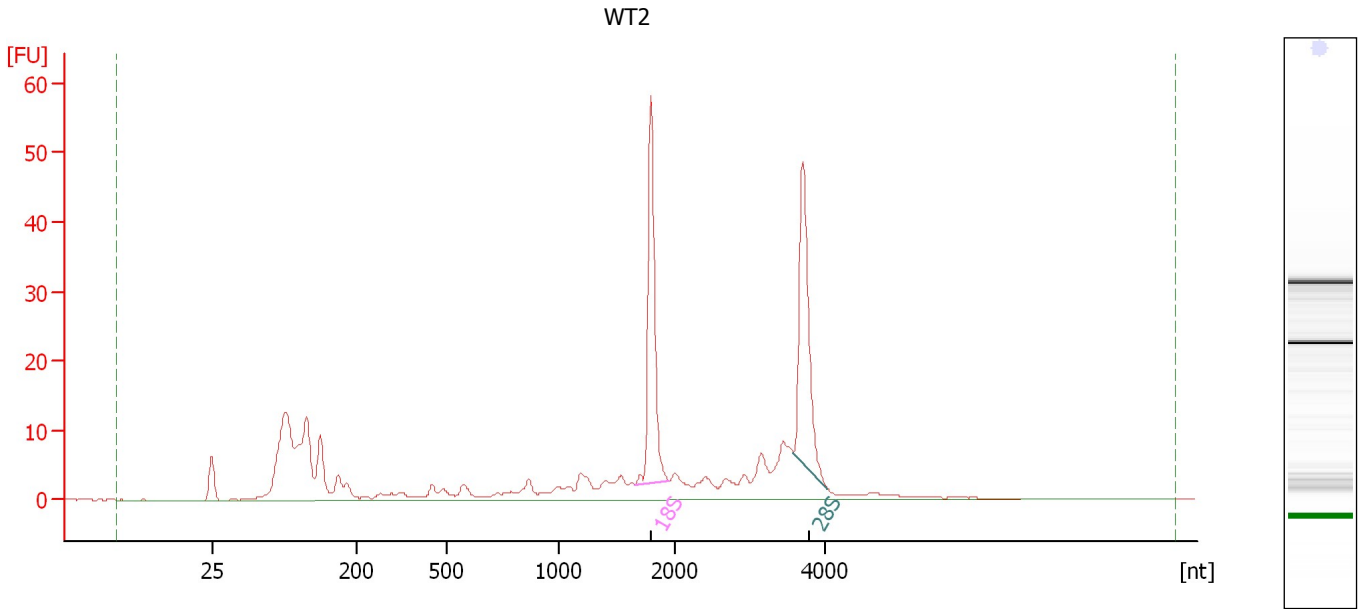
Fragment table for sample 1 : wt1

Name	Start Size [nt]	End Size [nt]	Area	% of total Area
18S	1,736	1,958	42.0	13.8
28S	3,569	4,057	35.1	11.6

Assay Class: Eukaryote Total RNA Nano
Data Path: C:\...ents and Settings\Bioanalyzer\2014-02-12\2014-02-12_003.xad

Created: 2/12/2014 12:40:58 PM
Modified: 2/12/2014 12:55:16 PM

Electropherogram Summary Continued ...



Overall Results for sample 2 : WT2

RNA Area:	284.6	RNA Integrity Number (RIN):	8 (B.02.08)
RNA Concentration:	230 ng/μl	Result Flagging Color:	
rRNA Ratio [28s / 18s]:	0.9	Result Flagging Label:	RIN:8

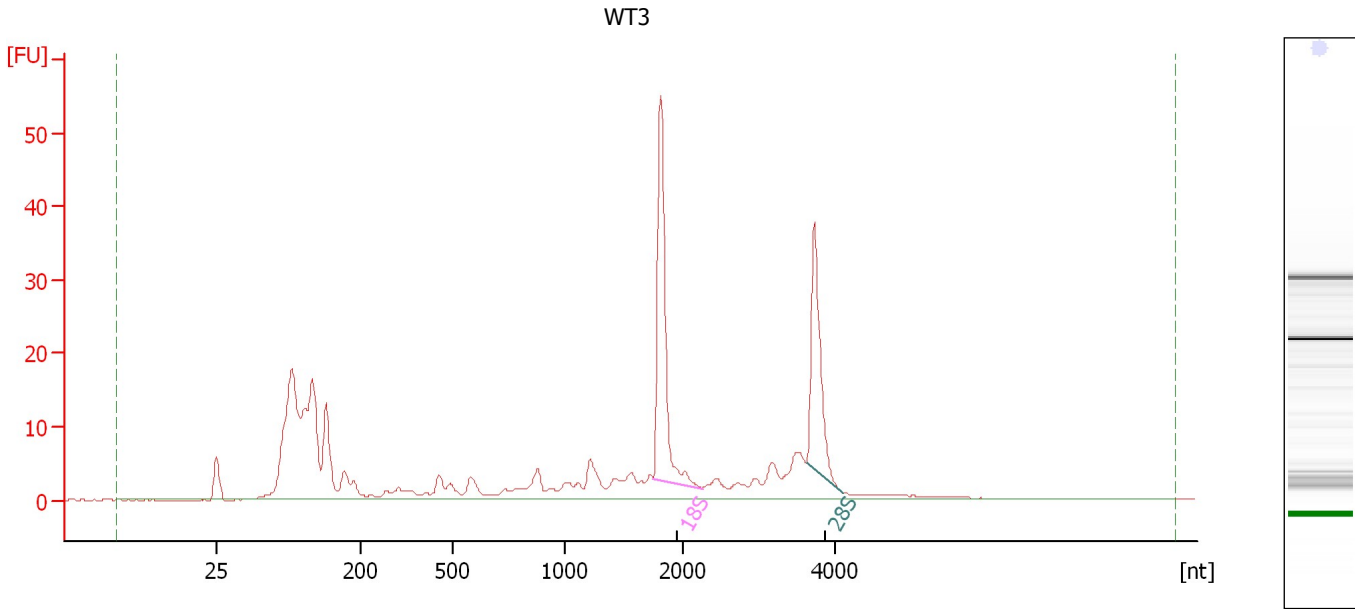
Fragment table for sample 2 : WT2

Name	Start Size [nt]	End Size [nt]	Area	% of total Area
18S	1,661	1,953	47.1	16.6
28S	3,574	4,028	40.9	14.4

Assay Class: Eukaryote Total RNA Nano
Data Path: C:\...ents and Settings\Bioanalyzer\2014-02-12\2014-02-12_003.xad

Created: 2/12/2014 12:40:58 PM
Modified: 2/12/2014 12:55:16 PM

Electropherogram Summary Continued ...



Overall Results for sample 3 : WT3

RNA Area: 301.7 RNA Integrity Number (RIN): 7.4 (B.02.08)
RNA Concentration: 244 ng/μl Result Flagging Color:
rRNA Ratio [28s / 18s]: 0.7 Result Flagging Label: RIN: 7.40

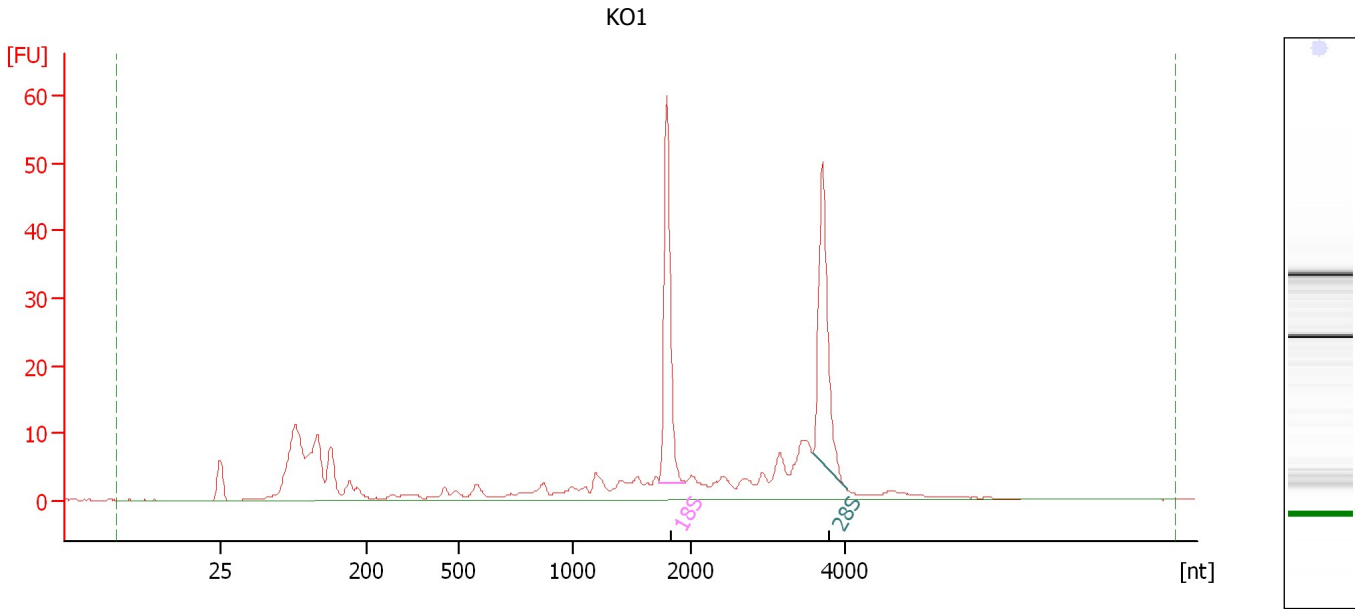
Fragment table for sample 3 : WT3

Name	Start Size [nt]	End Size [nt]	Area	% of total Area
18S	1,749	2,258	46.3	15.3
28S	3,623	4,101	31.0	10.3

Assay Class: Eukaryote Total RNA Nano
Data Path: C:\...ents and Settings\Bioanalyzer\2014-02-12\2014-02-12_003.xad

Created: 2/12/2014 12:40:58 PM
Modified: 2/12/2014 12:55:16 PM

Electropherogram Summary Continued ...



Overall Results for sample 4 : KO1

RNA Area: 279.0 RNA Integrity Number (RIN): 7.9 (B.02.08)
RNA Concentration: 225 ng/μl Result Flagging Color:
rRNA Ratio [28s / 18s]: 0.9 Result Flagging Label: RIN: 7.90

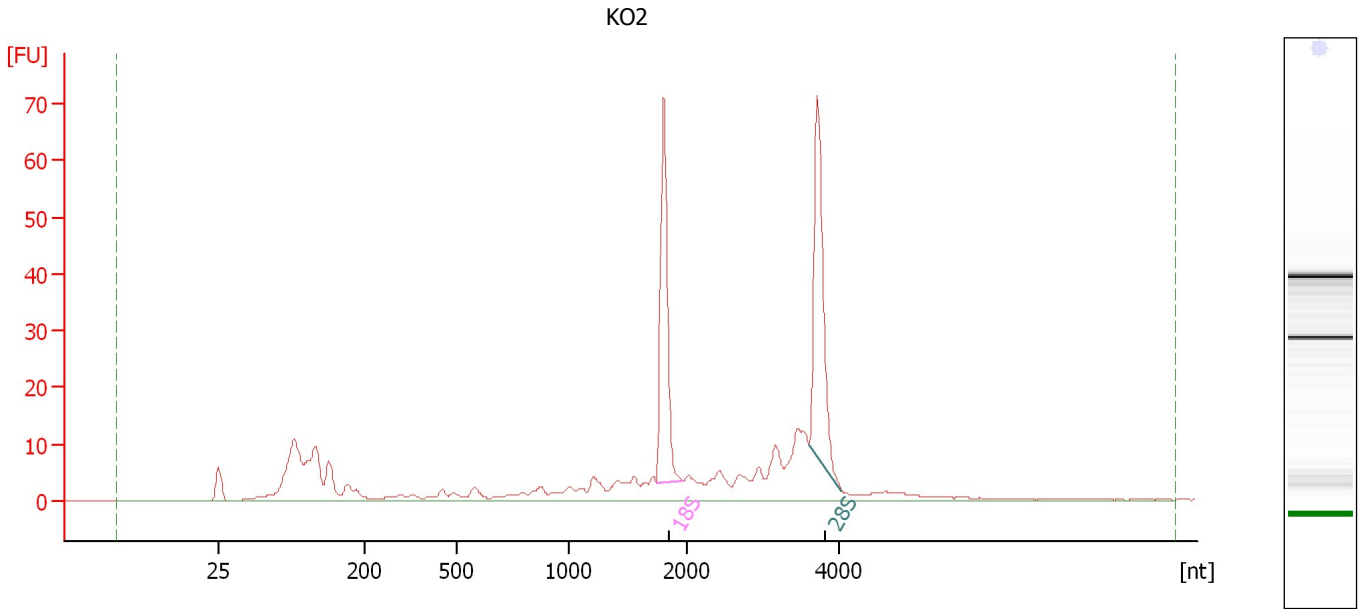
Fragment table for sample 4 : KO1

Name	Start Size [nt]	End Size [nt]	Area	% of total Area
18S	1,736	1,952	45.5	16.3
28S	3,587	4,033	40.8	14.6

Assay Class: Eukaryote Total RNA Nano
Data Path: C:\...ents and Settings\Bioanalyzer\2014-02-12\2014-02-12_003.xad

Created: 2/12/2014 12:40:58 PM
Modified: 2/12/2014 12:55:16 PM

Electropherogram Summary Continued ...



Overall Results for sample 5 : KO2

RNA Area:	344.3	RNA Integrity Number (RIN):	8.1 (B.02.08)
RNA Concentration:	278 ng/μl	Result Flagging Color:	
rRNA Ratio [28s / 18s]:	1.0	Result Flagging Label:	RIN: 8.10

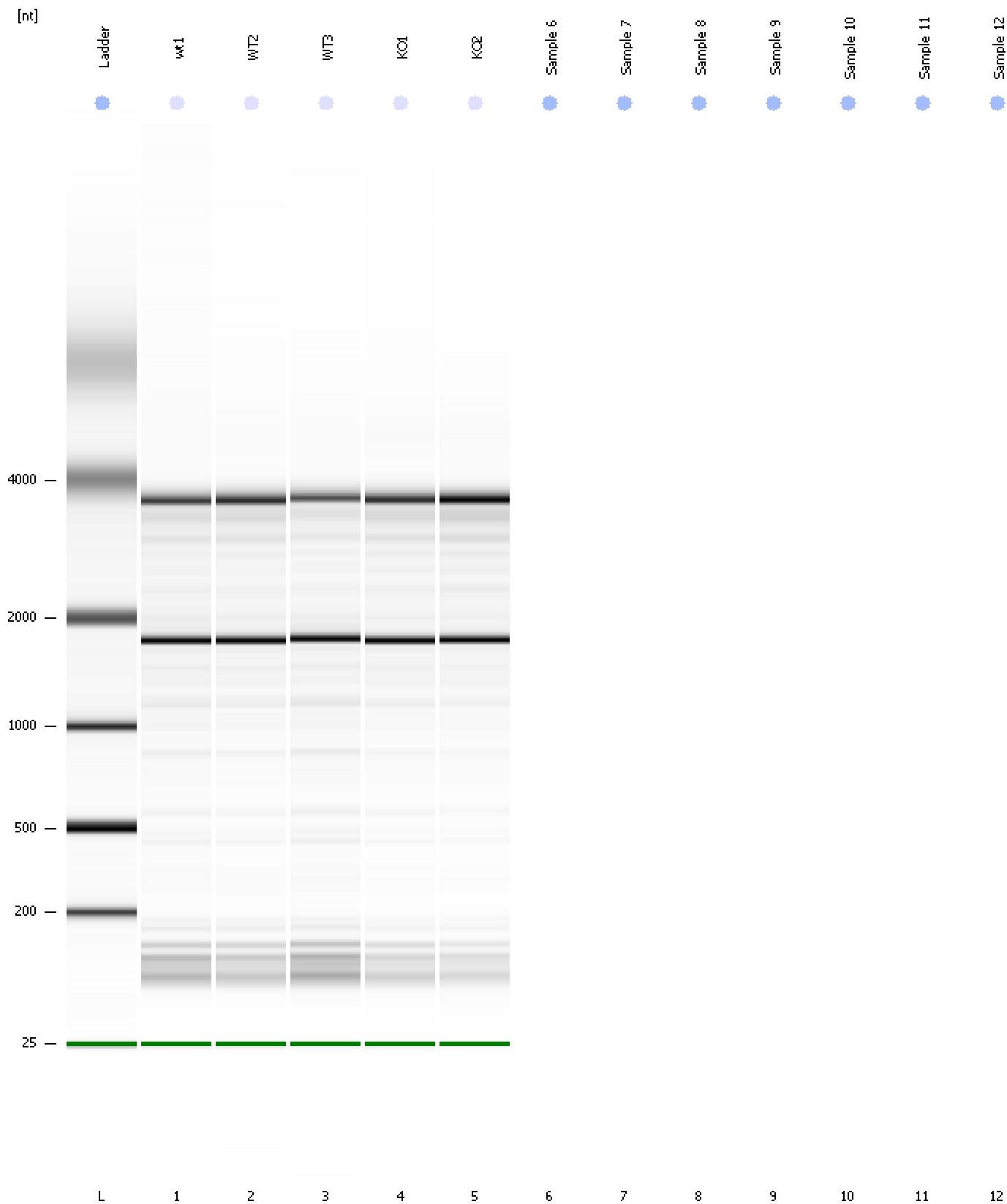
Fragment table for sample 5 : KO2

Name	Start Size [nt]	End Size [nt]	Area	% of total Area
18S	1,742	1,968	54.8	15.9
28S	3,605	4,025	57.0	16.6

Assay Class: Eukaryote Total RNA Nano
Data Path: C:\...ents and Settings\Bioanalyzer\2014-02-12\2014-02-12_003.xad

Created: 2/12/2014 12:40:58 PM
Modified: 2/12/2014 12:55:16 PM

Gel Image



Assay Class: Eukaryote Total RNA Nano
Data Path: C:\...ents and Settings\Bioanalyzer\2014-02-12\2014-02-12_003.xad

Created: 2/12/2014 12:40:58 PM
Modified: 2/12/2014 12:55:16 PM

Invalid Samples

Sample 6 has not been run, no results available.

Sample 7 has not been run, no results available.

Sample 8 has not been run, no results available.

Sample 9 has not been run, no results available.

Sample 10 has not been run, no results available.

Sample 11 has not been run, no results available.

Sample 12 has not been run, no results available.