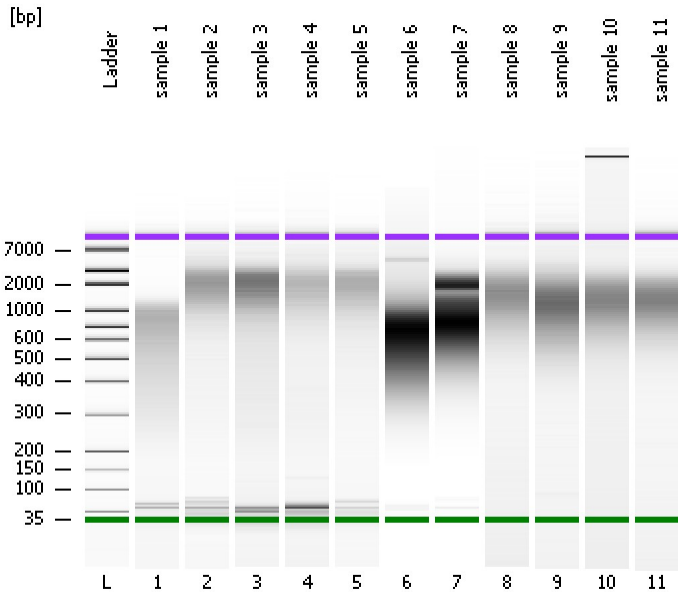


Assay Class: High Sensitivity DNA Assay
Data Path: C:\...ents and Settings\Bioanalyzer\2014-02-12\2014-02-12_004.xad

Created: 2/12/2014 2:13:51 PM
Modified: 2/12/2014 2:55:45 PM

Electrophoresis File Run Summary



Instrument Information:

Instrument Name: DE13701086 Firmware: C.01.069
Serial#: DE13701086 Type: G2938B

Assay Information:

Assay Origin Path: C:\Program Files\Agilent\2100 bioanalyzer\2100 expert\assays\dsDNA\High Sensitivity DNA.xsy
Assay Class: High Sensitivity DNA Assay
Version: 1.03
Assay Comments: Copyright © 2003-2010 Agilent Technologies

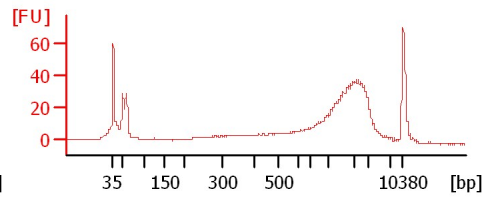
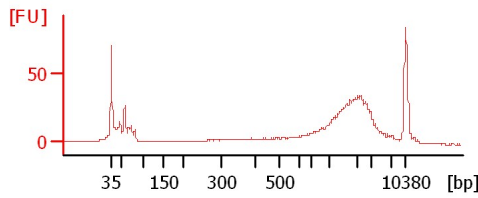
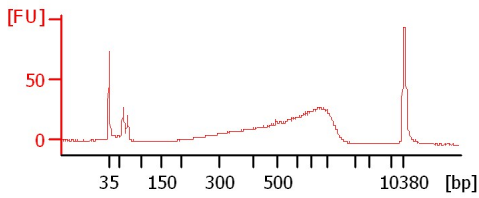
Chip Information:

Chip Lot #: Reagent Kit Lot #: Chip Comments:

sample 1

sample 2

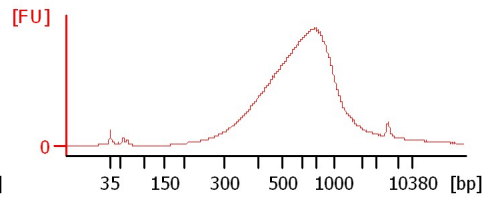
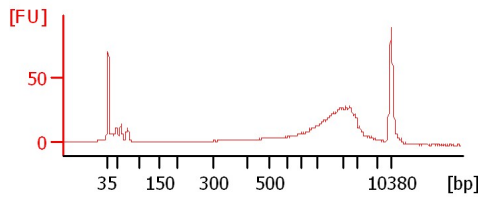
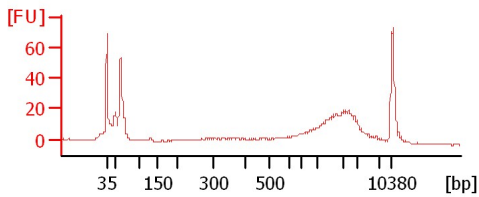
sample 3



sample 4

sample 5

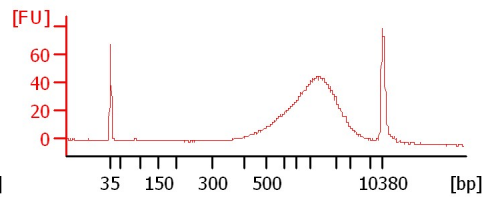
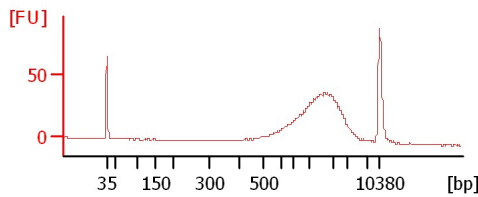
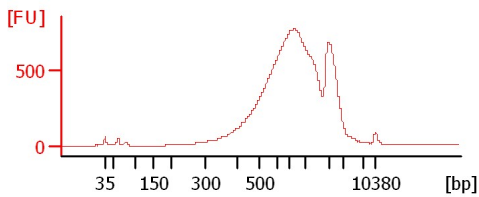
sample 6



sample 7

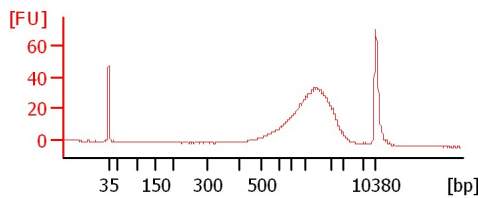
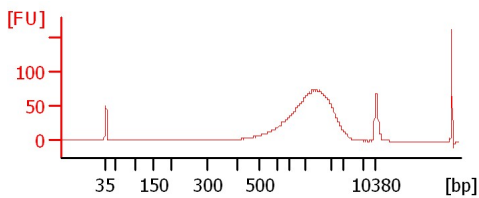
sample 8

sample 9



sample 10

sample 11



Assay Class: High Sensitivity DNA Assay
 Data Path: C:\...ents and Settings\Bioanalyzer\2014-02-12\2014-02-12_004.xad

Created: 2/12/2014 2:13:51 PM
 Modified: 2/12/2014 2:55:45 PM

Electrophoresis File Run Summary (Chip Summary)

Sample Name	Sample Comment	Rest. Digest	Status	Observation	Result Label	Result Color
sample 1		<input type="checkbox"/>	✓			
sample 2		<input type="checkbox"/>	✓			
sample 3		<input type="checkbox"/>	✓			
sample 4		<input type="checkbox"/>	✓			
sample 5		<input type="checkbox"/>	✓			
sample 6		<input type="checkbox"/>	✓			
sample 7		<input type="checkbox"/>	✓			
sample 8		<input type="checkbox"/>	✓			
sample 9		<input type="checkbox"/>	✓			
sample 10		<input type="checkbox"/>	✓			
sample 11		<input type="checkbox"/>	✓			
Ladder		<input type="checkbox"/>	✓			

Chip Lot #

Reagent Kit Lot #

Chip Comments :

Assay Class: High Sensitivity DNA Assay
Data Path: C:\...ents and Settings\Bioanalyzer\2014-02-12\2014-02-12_004.xad

Created: 2/12/2014 2:13:51 PM
Modified: 2/12/2014 2:55:45 PM

Electrophoresis Assay Details

General Analysis Settings

Number of Available Sample and Ladder Wells (Max.) : 12
Minimum Visible Range [s] : 32
Maximum Visible Range [s] : 138
Start Analysis Time Range [s] : 33
End Analysis Time Range [s] : 137.5
Ladder Concentration [pg/μl] : 1950
Uses Standard Area for Ladder Fragments
Lower Marker Concentration [pg/μl] : 125
Upper Marker Concentration [pg/μl] : 75
Used Upper Marker for Quantitation
Standard Curve Fit is Point to Point
Show Data Aligned to Lower and Upper Marker

Integrator Settings

Integration Start Time [s] : 33.05
Integration End Time [s] : 137
Slope Threshold : 0.8
Height Threshold [FU] : 5
Area Threshold : 0.1
Width Threshold [s] : 0.6
Baseline Plateau [s] : 0.5

Filter Settings

Filter Width [s] : 0.5
Polynomial Order : 4

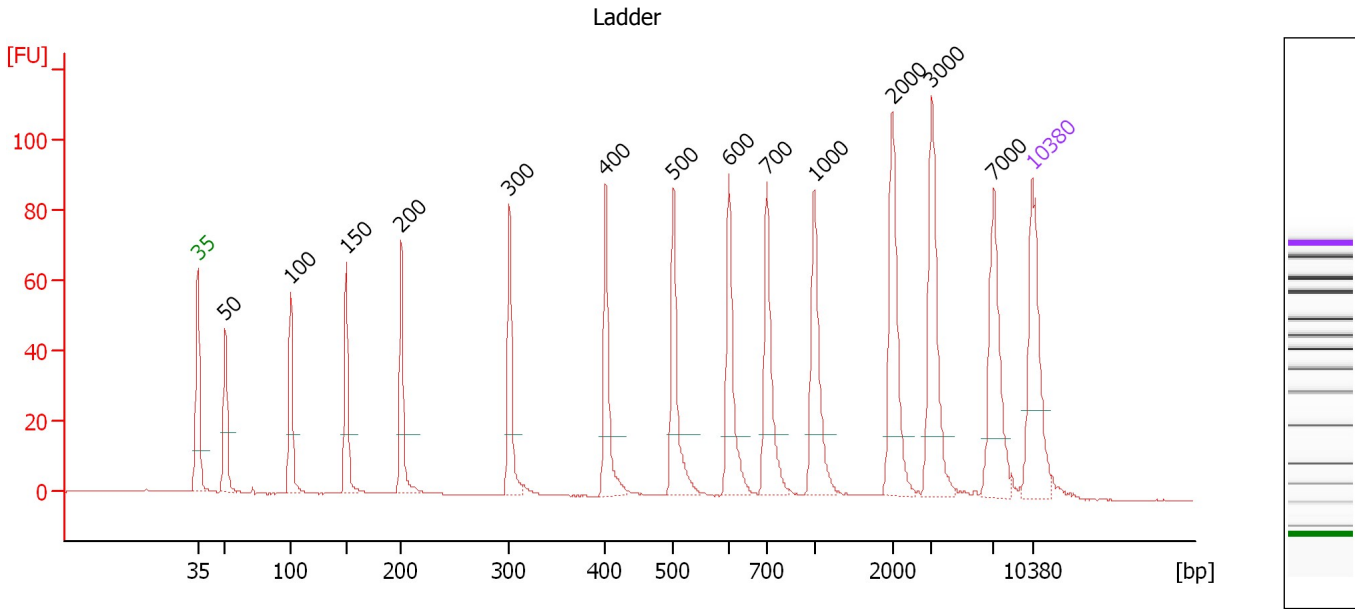
Ladder

Ladder Peak	Size	Area
1	35	160
2	50	210
3	100	208
4	150	221
5	200	242
6	300	270
7	400	305
8	500	306
9	600	336
10	700	321
11	1000	366
12	2000	413
13	3000	411
14	7000	400
15	10380	214

Assay Class: High Sensitivity DNA Assay
 Data Path: C:\...ents and Settings\Bioanalyzer\2014-02-12\2014-02-12_004.xad

Created: 2/12/2014 2:13:51 PM
 Modified: 2/12/2014 2:55:45 PM

Electropherogram Summary



Overall Results for Ladder

Noise: 0.1

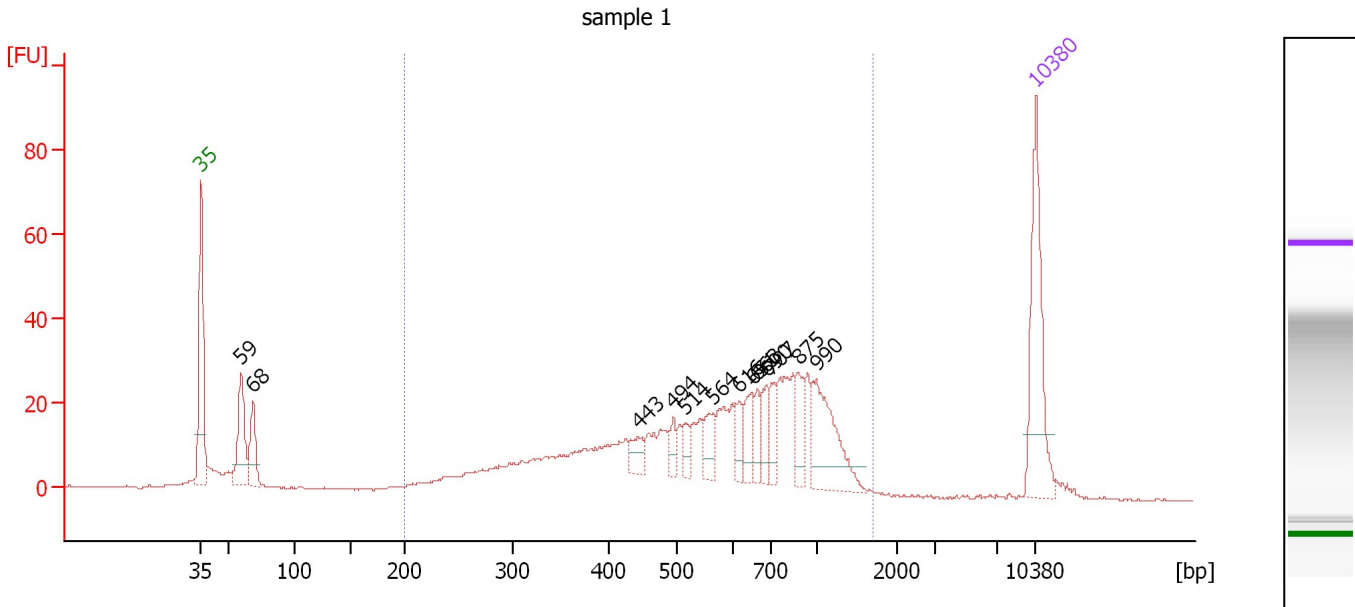
Peak table for Ladder

Peak	Aligned Migration Time [s]	Size [bp]	Conc. [pg/μl]	Molarity [pmol/l]	Observations
1	43.00	35	125.00	5,411.3	Lower Marker
2	45.33	50	150.00	4,545.5	Ladder Peak
3	50.78	100	150.00	2,272.7	Ladder Peak
4	55.48	150	150.00	1,515.2	Ladder Peak
5	60.09	200	150.00	1,136.4	Ladder Peak
6	69.17	300	150.00	757.6	Ladder Peak
7	77.22	400	150.00	568.2	Ladder Peak
8	82.90	500	150.00	454.5	Ladder Peak
9	87.59	600	150.00	378.8	Ladder Peak
10	90.73	700	150.00	324.7	Ladder Peak
11	94.71	1,000	150.00	227.3	Ladder Peak
12	101.28	2,000	150.00	113.6	Ladder Peak
13	104.59	3,000	150.00	75.8	Ladder Peak
14	109.78	7,000	150.00	32.5	Ladder Peak
15	113.00	10,380	75.00	10.9	Upper Marker

Assay Class: High Sensitivity DNA Assay
 Data Path: C:\...ents and Settings\Bioanalyzer\2014-02-12\2014-02-12_004.xad

Created: 2/12/2014 2:13:51 PM
 Modified: 2/12/2014 2:55:45 PM

Electropherogram Summary Continued ...



Overall Results for sample 1 : sample 1

Number of peaks found: 13 Corr. Area 1: 621.7
 Noise: 0.2

Peak table for sample 1 : sample 1

Peak	Aligned Migration Time [s]	Size [bp]	Conc. [pg/μl]	Molarity [pmol/l]	Observations
1	43.00	35	125.00	5,411.3	Lower Marker
2	46.35	59	71.46	1,822.0	
3	47.29	68	44.79	997.6	
4	79.63	443	17.47	59.8	
5	82.58	494	10.92	33.4	
6	83.57	514	12.72	37.5	
7	85.89	564	21.77	58.5	
8	88.09	616	15.48	38.1	
9	89.20	651	22.95	53.4	
10	89.56	663	16.67	38.1	
11	90.41	690	20.26	44.5	
12	90.81	707	18.44	39.5	
13	93.05	875	22.79	39.5	
14	94.57	990	67.01	102.6	
15	113.00	10,380	75.00	10.9	Upper Marker

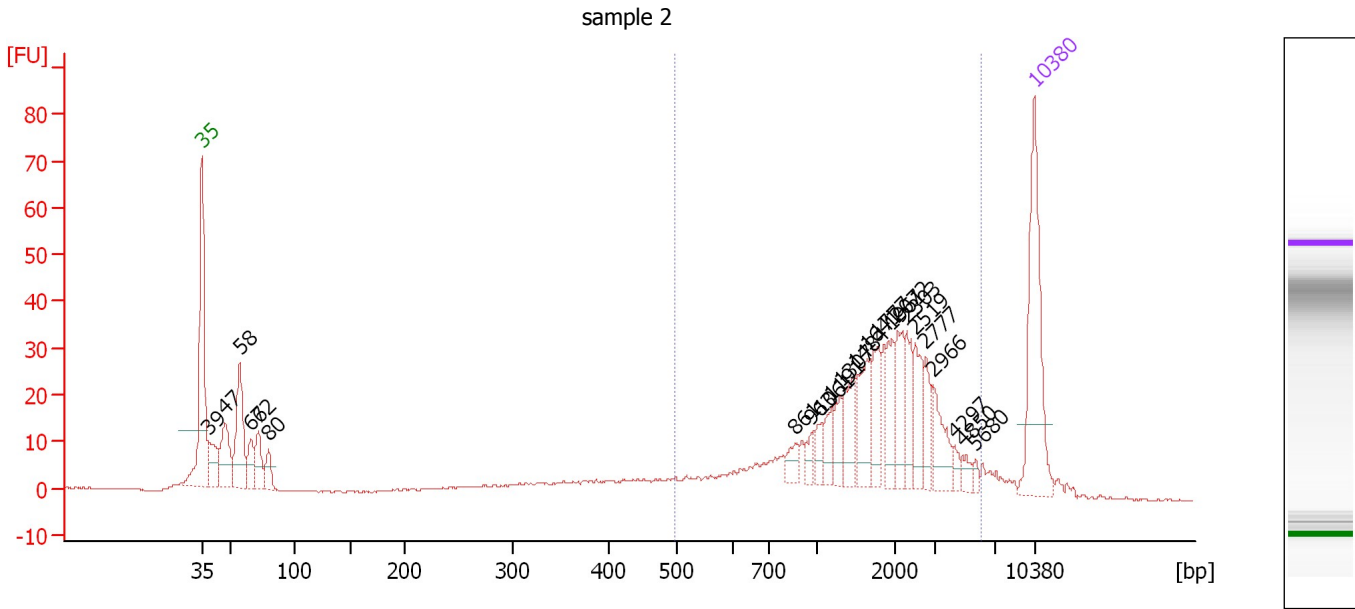
Region table for sample 1 : sample 1

From [bp]	To [bp]	Average Size [bp]	Molarity [pmol/l]	Conc. [pg/μl]	Corr. Area	% of Total	Size distribution in CV [%]	Color
200	1,709	637	2,287.8	740.09	621.7	85	43.0	Blue

Assay Class: High Sensitivity DNA Assay
 Data Path: C:\...ents and Settings\Bioanalyzer\2014-02-12\2014-02-12_004.xad

Created: 2/12/2014 2:13:51 PM
 Modified: 2/12/2014 2:55:45 PM

Electropherogram Summary Continued ...



Overall Results for sample 2 : sample 2

Number of peaks found: 23 Corr. Area 1: 404.1
 Noise: 0.2

Peak table for sample 2 : sample 2


Peak	Aligned Migration Time [s]	Size [bp]	Conc. [pg/μl]	Molarity [pmol/l]	Observations
1	43.00	35	125.00	5,411.3	Lower Marker
2	43.58	39	36.42	1,423.6	
3	44.93	47	51.70	1,651.4	
4	46.18	58	78.91	2,066.3	
5	47.13	66	23.74	541.1	
6	47.75	72	28.52	598.2	
7	48.61	80	18.26	345.7	
8	92.87	861	10.33	18.2	
9	94.21	963	8.91	14.0	
10	95.11	1,061	9.59	13.7	
11	95.96	1,191	15.15	19.3	
12	96.72	1,307	14.98	17.4	
13	97.89	1,484	24.50	25.0	
14	98.92	1,641	31.54	29.1	
15	99.82	1,777	24.66	21.0	
16	101.03	1,961	22.93	17.7	
17	101.52	2,072	25.32	18.5	
18	102.28	2,303	21.48	14.1	
19	103.00	2,519	22.29	13.4	
20	103.85	2,777	16.93	9.2	
21	104.48	2,966	23.51	12.0	
22	106.27	4,297	5.07	1.8	
23	106.99	4,850	5.64	1.8	
24	108.07	5,680	3.00	0.8	
25	113.00	10,380	75.00	10.9	Upper Marker

Assay Class: High Sensitivity DNA Assay
Data Path: C:\...ents and Settings\Bioanalyzer\2014-02-12\2014-02-12_004.xad

Created: 2/12/2014 2:13:51 PM
Modified: 2/12/2014 2:55:45 PM

Electropherogram Summary Continued ...

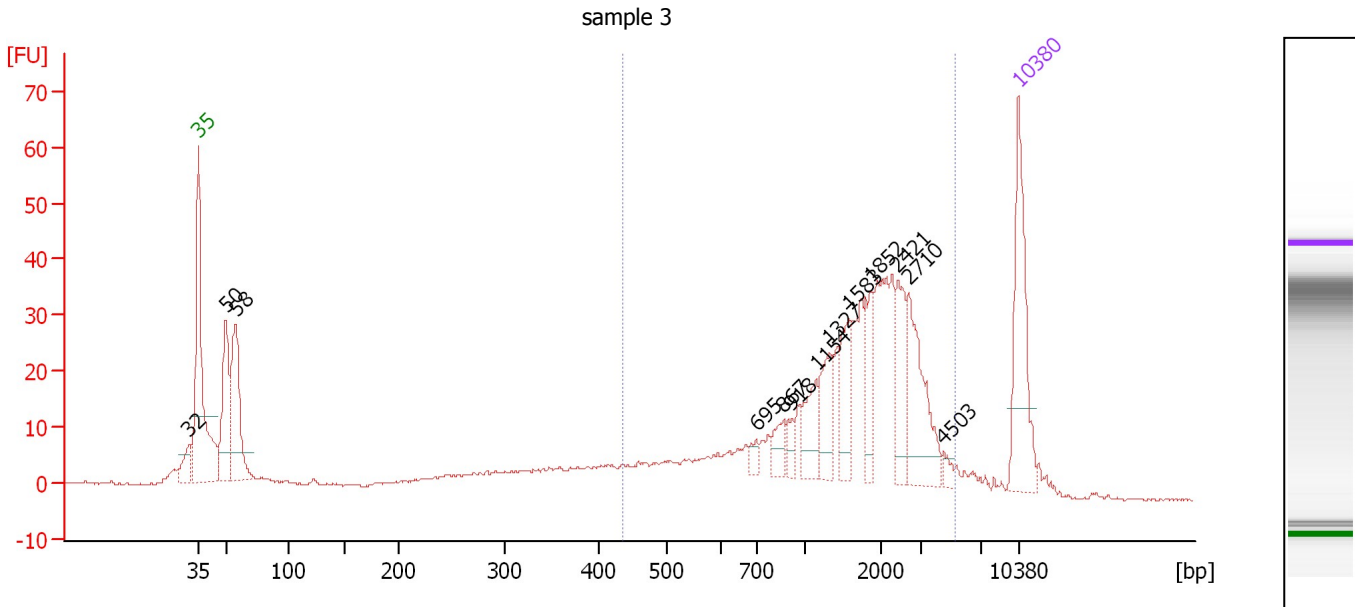
... Region table for sample 2 : sample 2

From [bp]	To [bp]	Average Size [bp]	Molarity [pmol/l]	Conc. [pg/ μ l]	Corr. Area	% of Total	Size distribution in CV [%]	Color
498	5,985	1,931	460.6	411.27	404.1	65	54.6	

Assay Class: High Sensitivity DNA Assay
 Data Path: C:\...ents and Settings\Bioanalyzer\2014-02-12\2014-02-12_004.xad

Created: 2/12/2014 2:13:51 PM
 Modified: 2/12/2014 2:55:45 PM

Electropherogram Summary Continued ...



Overall Results for sample 3 : sample 3

Number of peaks found: 13 Corr. Area 1: 480.6
 Noise: 0.2

Peak table for sample 3 : sample 3

Peak	Aligned Migration Time [s]	Size [bp]	Conc. [pg/μl]	Molarity [pmol/l]	Observations
1	42.18	32	0.00	0.0	
2	43.00	35	125.00	5,411.3	Lower Marker
3	45.37	50	100.55	3,025.3	
4	46.18	58	121.16	3,172.7	
5	90.58	695	7.76	16.9	
6	92.94	867	17.44	30.5	
7	93.62	918	8.97	14.8	
8	95.72	1,154	31.32	41.1	
9	96.85	1,327	35.04	40.0	
10	98.54	1,583	37.52	35.9	
11	100.31	1,852	28.68	23.5	
12	102.68	2,421	38.60	24.2	
13	103.63	2,710	66.96	37.4	
14	106.54	4,503	5.84	2.0	
15	113.00	10,380	75.00	10.9	Upper Marker

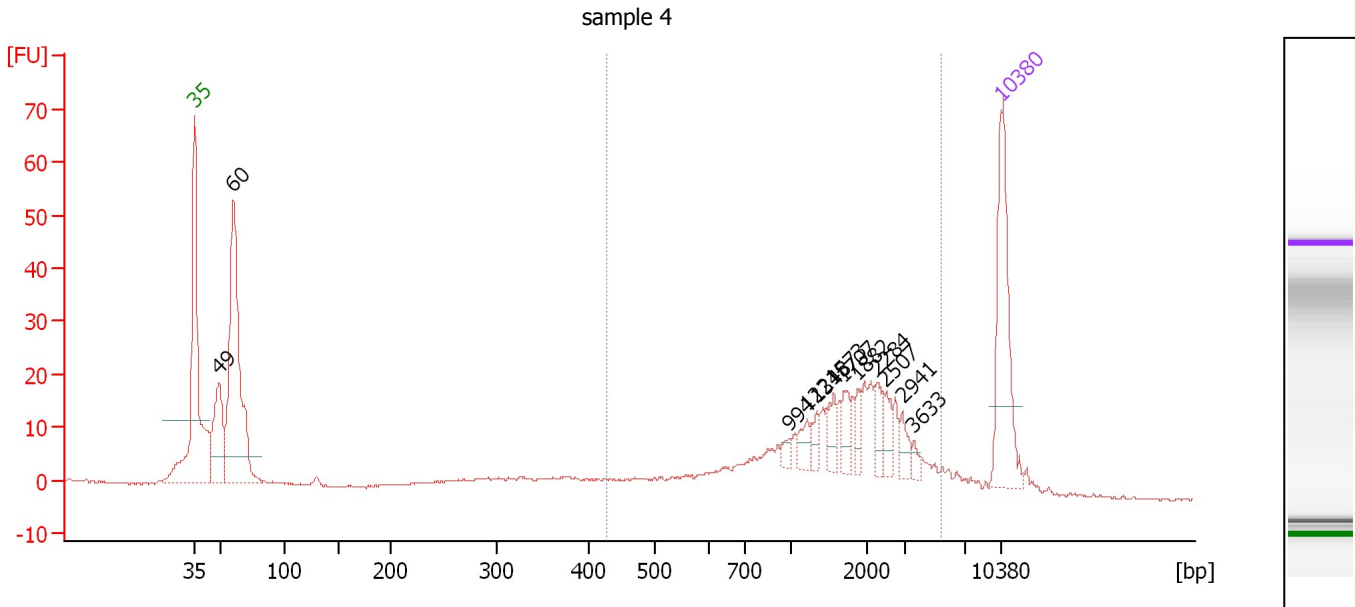
Region table for sample 3 : sample 3

From [bp]	To [bp]	Average Size [bp]	Molarity [pmol/l]	Conc. [pg/μl]	Corr. Area	% of Total	Size distribution in CV [%]	Color
435	5,251	1,738	800.5	606.81	480.6	66	53.1	Blue

Assay Class: High Sensitivity DNA Assay
 Data Path: C:\...ents and Settings\Bioanalyzer\2014-02-12\2014-02-12_004.xad

Created: 2/12/2014 2:13:51 PM
 Modified: 2/12/2014 2:55:45 PM

Electropherogram Summary Continued ...



Overall Results for sample 4 : sample 4

Number of peaks found: 12 Corr. Area 1: 262.6
 Noise: 0.2

Peak table for sample 4 : sample 4

Peak	Aligned Migration Time [s]	Size [bp]	Conc. [pg/μl]	Molarity [pmol/l]	Observations
1	43.00	35	125.00	5,411.3	Lower Marker
2	45.13	49	85.13	2,647.1	
3	46.38	60	258.65	6,571.5	
4	94.63	994	5.80	8.8	
5	96.16	1,221	11.06	13.7	
6	96.99	1,348	8.80	9.9	
7	98.47	1,573	13.91	13.4	
8	99.35	1,707	13.12	11.7	
9	100.51	1,882	10.22	8.2	
10	102.22	2,284	14.00	9.3	
11	102.96	2,507	11.52	7.0	
12	104.39	2,941	9.94	5.1	
13	105.41	3,633	4.49	1.9	
14	113.00	10,380	75.00	10.9	Upper Marker

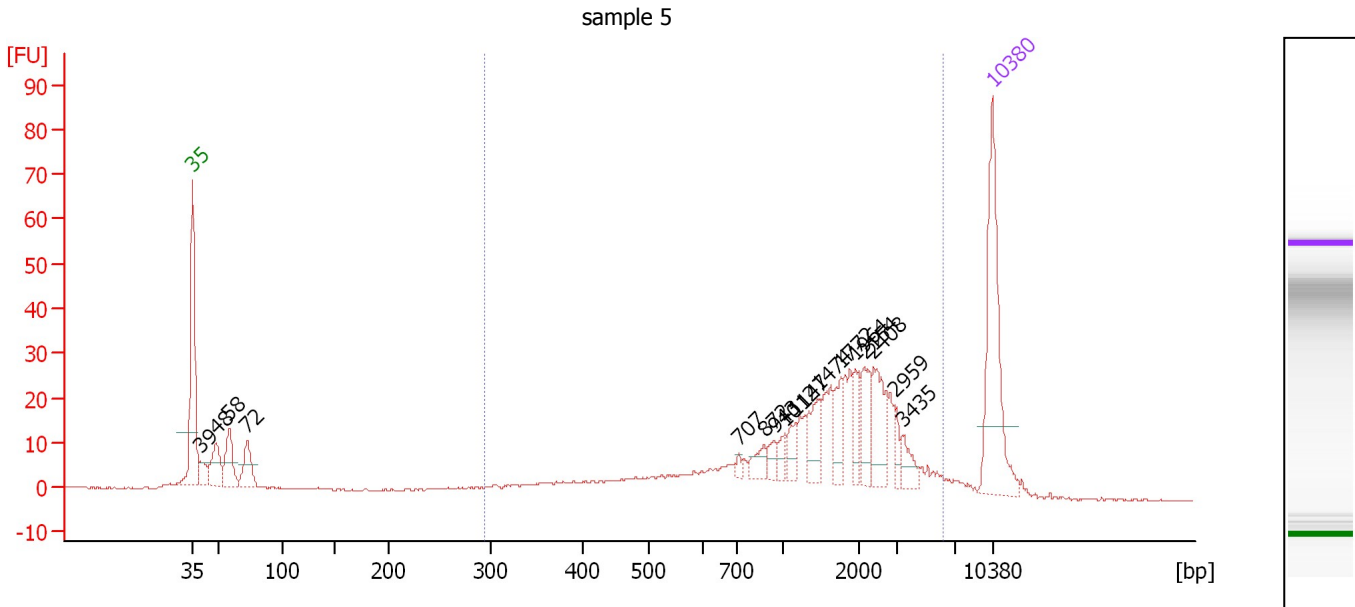
Region table for sample 4 : sample 4

From [bp]	To [bp]	Average Size [bp]	Molarity [pmol/l]	Conc. [pg/μl]	Corr. Area	% of Total	Size distribution in CV [%]	Color
426	5,420	1,781	386.8	302.92	262.6	54	55.4	Blue

Assay Class: High Sensitivity DNA Assay
 Data Path: C:\...ents and Settings\Bioanalyzer\2014-02-12\2014-02-12_004.xad

Created: 2/12/2014 2:13:51 PM
 Modified: 2/12/2014 2:55:45 PM

Electropherogram Summary Continued ...



Overall Results for sample 5 : sample 5

Number of peaks found: 16 Corr. Area 1: 395.0
 Noise: 0.2

Peak table for sample 5 : sample 5

Peak	Aligned Migration Time [s]	Size [bp]	Conc. [pg/μl]	Molarity [pmol/l]	Observations
1	43.00	35	125.00	5,411.3	Lower Marker
2	43.61	39	16.86	656.4	
3	45.05	48	32.79	1,029.6	
4	46.18	58	36.20	949.3	
5	47.76	72	29.65	621.1	
6	90.82	707	3.10	6.6	
7	93.01	872	10.86	18.9	
8	93.95	943	8.03	12.9	
9	94.79	1,012	6.18	9.2	
10	95.68	1,147	9.92	13.1	
11	97.82	1,474	20.77	21.3	
12	99.78	1,772	15.38	13.1	
13	101.05	1,964	13.65	10.5	
14	101.79	2,154	20.12	14.1	
15	102.63	2,408	30.22	19.0	
16	104.45	2,959	7.89	4.0	
17	105.15	3,435	10.69	4.7	
18	113.00	10,380	75.00	10.9	Upper Marker

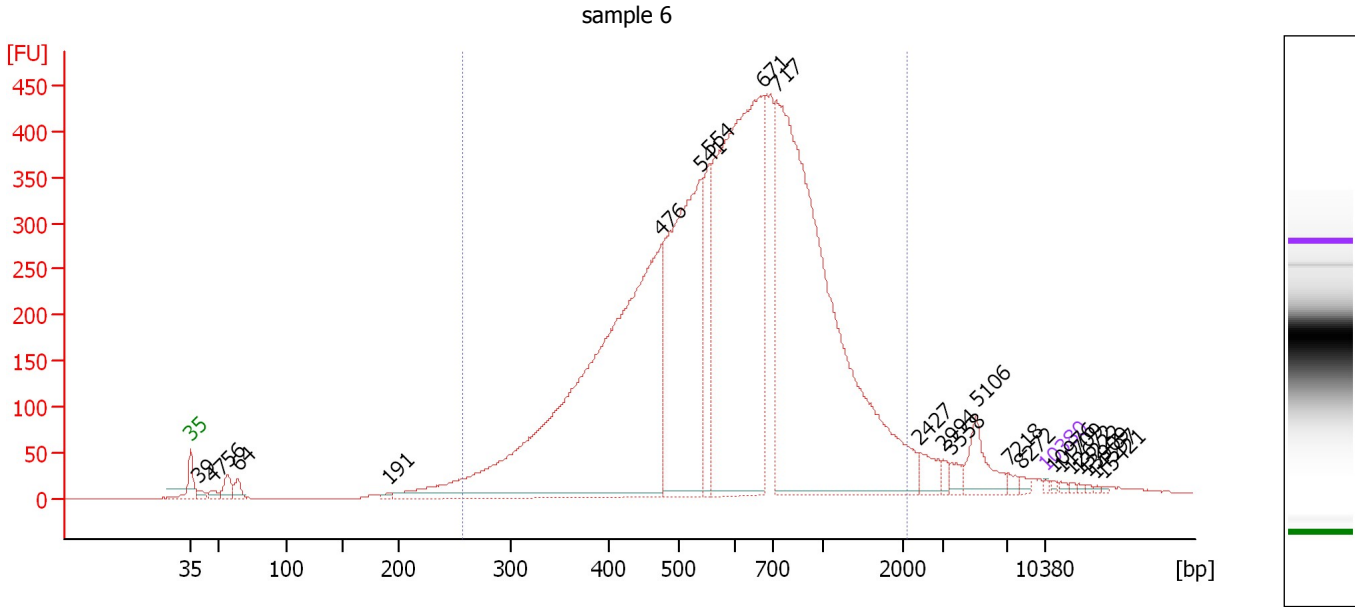
Region table for sample 5 : sample 5

From [bp]	To [bp]	Average Size [bp]	Molarity [pmol/l]	Conc. [pg/μl]	Corr. Area	% of Total	Size distribution in CV [%]	Color
294	6,144	1,733	600.7	387.03	395.0	79	62.8	Blue

Assay Class: High Sensitivity DNA Assay
 Data Path: C:\...ents and Settings\Bioanalyzer\2014-02-12\2014-02-12_004.xad

Created: 2/12/2014 2:13:51 PM
 Modified: 2/12/2014 2:55:45 PM

Electropherogram Summary Continued ...



Overall Results for sample 6 : sample 6

Number of peaks found: 23 Corr. Area 1: 9,340.2
 Noise: 0.2

Peak table for sample 6 : sample 6

Peak	Aligned Migration Time [s]	Size [bp]	Conc. [pg/μl]	Molarity [pmol/l]	Observations
1	43.00	35	125.00	5,411.3	Lower Marker
2	43.57	39	333.60	13,074.2	
3	44.83	47	372.95	12,066.9	
4	46.01	56	939.87	25,295.3	
5	46.84	64	620.61	14,715.7	
6	59.24	191	162.04	1,286.4	
7	81.56	476	36,406.22	115,779.3	
8	84.83	541	16,304.52	45,643.9	
9	85.45	554	4,242.16	11,596.8	
10	89.81	671	26,486.19	59,821.4	
11	90.95	717	35,080.41	74,156.3	
12	102.69	2,427	804.41	502.2	
13	104.57	2,994	258.42	130.8	
14	105.31	3,558	351.45	149.7	
15	107.32	5,106	1,478.55	438.7	
16	109.99	7,218	175.56	36.9	
17	110.99	8,272	171.55	31.4	
18	113.00	10,380	75.00	10.9	Upper Marker
19	113.57	10,976	0.00	0.0	
20	114.27	11,709	0.00	0.0	
21	115.18	12,672	0.00	0.0	
22	115.71	13,222	0.00	0.0	
23	116.36	13,909	0.00	0.0	
24	117.02	14,597	0.00	0.0	
25	117.80	15,421	0.00	0.0	

Assay Class: High Sensitivity DNA Assay
Data Path: C:\...ents and Settings\Bioanalyzer\2014-02-12\2014-02-12_004.xad

Created: 2/12/2014 2:13:51 PM
Modified: 2/12/2014 2:55:45 PM

Electropherogram Summary Continued ...

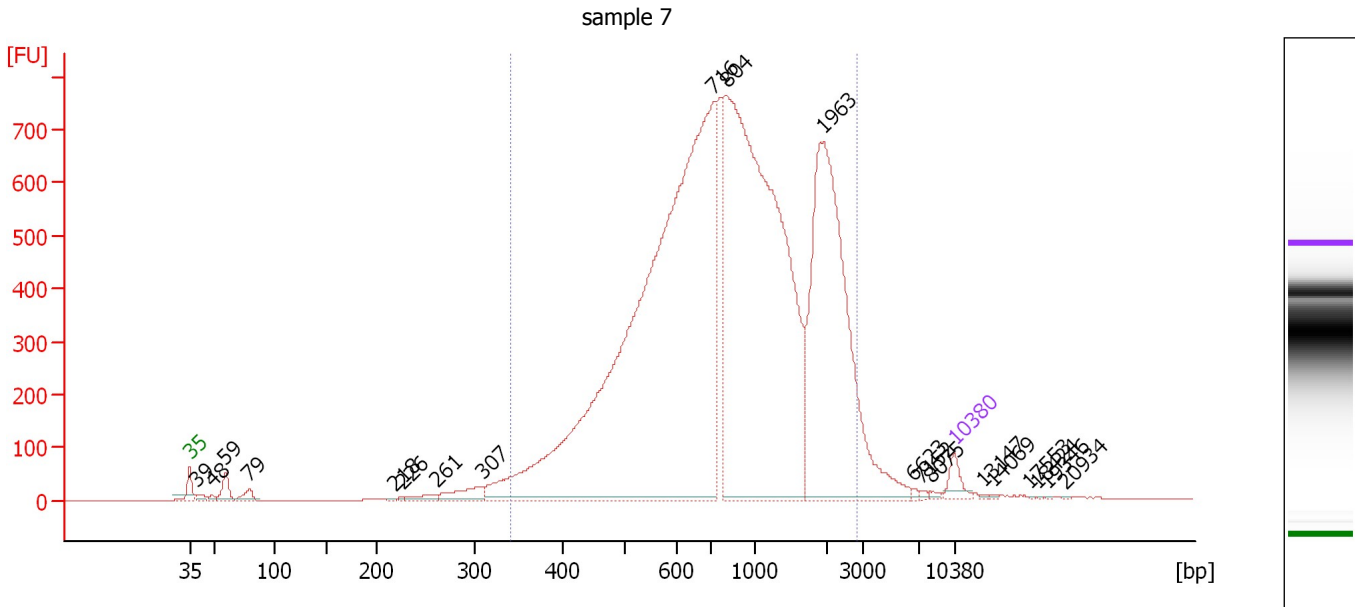
... Region table for sample 6 : sample 6

From [bp]	To [bp]	Average Size [bp]	Molarity [pmol/l]	Conc. [pg/μl]	Corr. Area	% of Total	Size distribution in CV [%]	Color
258	2,115	675	338,002.8	121,897.22	9,340.2	93	46.6	■

Assay Class: High Sensitivity DNA Assay
 Data Path: C:\...ents and Settings\Bioanalyzer\2014-02-12\2014-02-12_004.xad

Created: 2/12/2014 2:13:51 PM
 Modified: 2/12/2014 2:55:45 PM

Electropherogram Summary Continued ...



Overall Results for sample 7 : sample 7

Number of peaks found: 20 Corr. Area 1: 14,507.5
 Noise: 0.3

Peak table for sample 7 : sample 7


Peak	Aligned Migration Time [s]	Size [bp]	Conc. [pg/μl]	Molarity [pmol/l]	Observations
1	43.00	35	125.00	5,411.3	Lower Marker
2	43.63	39	44.73	1,733.8	
3	45.00	48	24.19	765.1	
4	46.27	59	128.65	3,323.1	
5	48.47	79	75.39	1,449.8	
6	61.70	218	9.76	67.9	
7	62.43	226	8.20	55.0	
8	65.60	261	56.97	331.0	
9	69.75	307	139.44	687.6	
10	90.94	716	6,627.28	14,026.7	
11	92.11	804	4,613.40	8,692.3	
12	101.04	1,963	2,093.30	1,615.4	
13	109.29	6,623	9.43	2.2	
14	109.92	7,152	12.05	2.6	
15	110.80	8,075	10.08	1.9	
16	113.00	10,380	75.00	10.9	Upper Marker
17	115.64	13,147	0.00	0.0	
18	116.51	14,069	0.00	0.0	
19	119.83	17,553	0.00	0.0	
20	120.66	18,424	0.00	0.0	
21	121.54	19,346	0.00	0.0	
22	123.06	20,934	0.00	0.0	

Assay Class: High Sensitivity DNA Assay
Data Path: C:\...ents and Settings\Bioanalyzer\2014-02-12\2014-02-12_004.xad

Created: 2/12/2014 2:13:51 PM
Modified: 2/12/2014 2:55:45 PM

Electropherogram Summary Continued ...

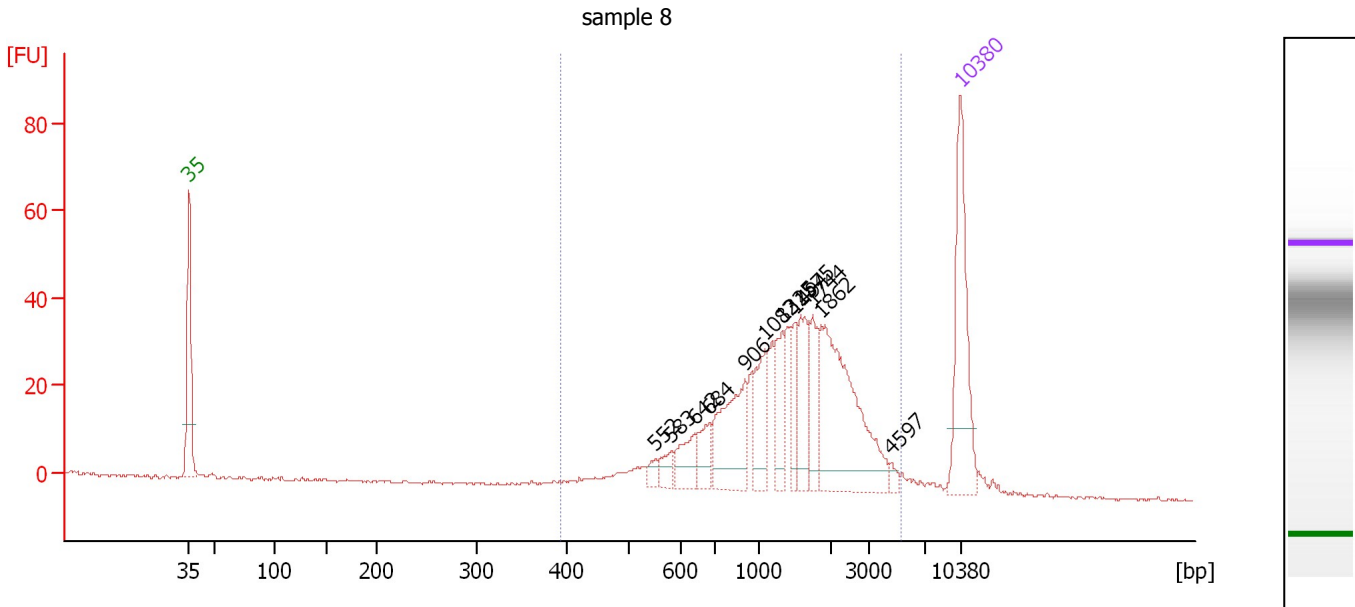
... Region table for sample 7 : sample 7

From [bp]	To [bp]	Average Size [bp]	Molarity [pmol/l]	Conc. [pg/ μ l]	Corr. Area	% of Total	Size distribution in CV [%]	Color
340	2,864	1,038	27,663.1	13,510.11	14,507.5	94	57.8	

Assay Class: High Sensitivity DNA Assay
 Data Path: C:\...ents and Settings\Bioanalyzer\2014-02-12\2014-02-12_004.xad

Created: 2/12/2014 2:13:51 PM
 Modified: 2/12/2014 2:55:45 PM

Electropherogram Summary Continued ...



Overall Results for sample 8 : sample 8

Number of peaks found: 12 Corr. Area 1: 538.0
 Noise: 0.4

Peak table for sample 8 : sample 8

Peak	Aligned Migration Time [s]	Size [bp]	Conc. [pg/μl]	Molarity [pmol/l]	Observations
1	43.00	35	125.00	5,411.3	Lower Marker
2	85.33	552	7.62	20.9	
3	86.78	583	11.82	30.7	
4	88.91	642	24.57	58.0	
5	90.21	684	20.88	46.3	
6	93.46	906	66.36	111.0	
7	95.25	1,082	39.27	55.0	
8	96.84	1,325	30.52	34.9	
9	97.96	1,494	23.55	23.9	
10	98.49	1,575	35.60	34.2	
11	99.60	1,744	27.58	24.0	
12	100.37	1,862	123.37	100.4	
13	106.66	4,597	4.36	1.4	
14	113.00	10,380	75.00	10.9	Upper Marker

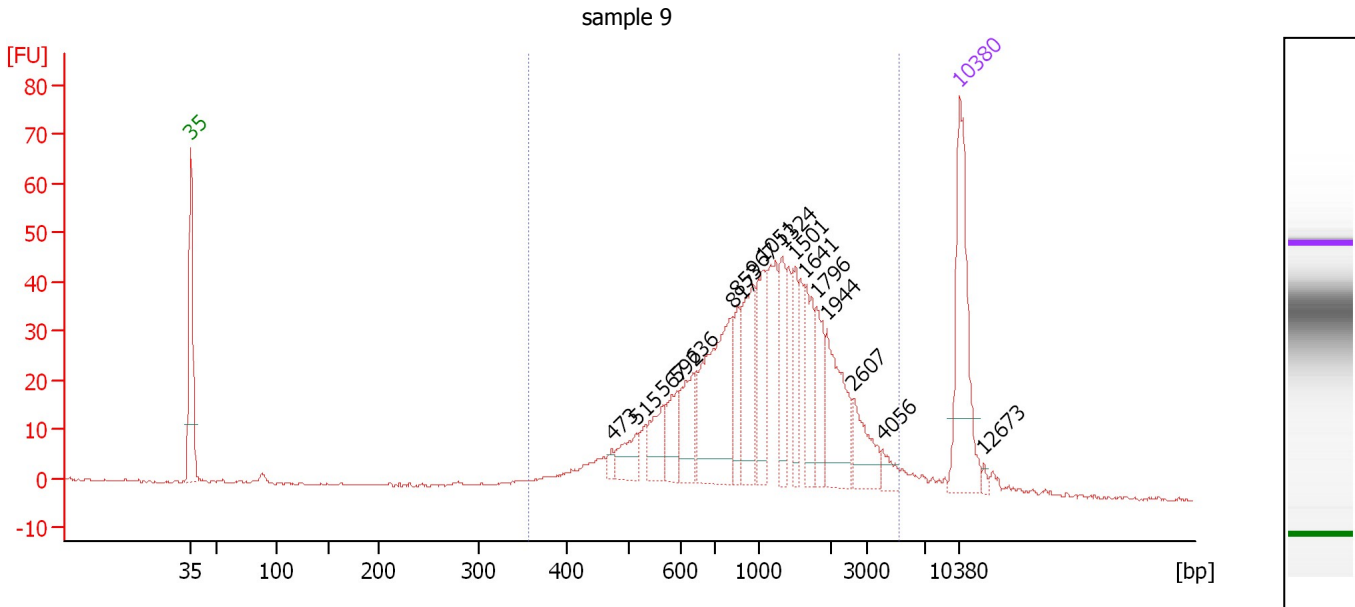
Region table for sample 8 : sample 8

From [bp]	To [bp]	Average Size [bp]	Molarity [pmol/l]	Conc. [pg/μl]	Corr. Area	% of Total	Size distribution in CV [%]	Color
393	5,315	1,532	687.5	497.04	538.0	96	54.7	Blue

Assay Class: High Sensitivity DNA Assay
 Data Path: C:\...ents and Settings\Bioanalyzer\2014-02-12\2014-02-12_004.xad

Created: 2/12/2014 2:13:51 PM
 Modified: 2/12/2014 2:55:45 PM

Electropherogram Summary Continued ...



Overall Results for sample 9 : sample 9

Number of peaks found: 17 Corr. Area 1: 748.0
 Noise: 0.2

Peak table for sample 9 : sample 9

Peak	Aligned Migration Time [s]	Size [bp]	Conc. [pg/μl]	Molarity [pmol/l]	Observations
1	43.00	35	125.00	5,411.3	Lower Marker
2	81.35	473	5.81	18.6	
3	83.58	515	24.00	70.7	
4	86.06	567	28.77	76.8	
5	87.22	592	26.28	67.2	
6	88.73	636	37.45	89.2	
7	92.27	817	108.43	201.2	
8	92.76	853	27.55	48.9	
9	94.26	967	56.42	88.4	
10	95.04	1,051	45.63	65.8	
11	96.83	1,324	30.79	35.2	
12	98.00	1,501	26.37	26.6	
13	98.92	1,641	35.11	32.4	
14	99.94	1,796	28.76	24.3	
15	100.91	1,944	51.46	40.1	
16	103.29	2,607	26.83	15.6	
17	105.96	4,056	8.32	3.1	
18	113.00	10,380	75.00	10.9	Upper Marker
19	115.18	12,673	0.00	0.0	

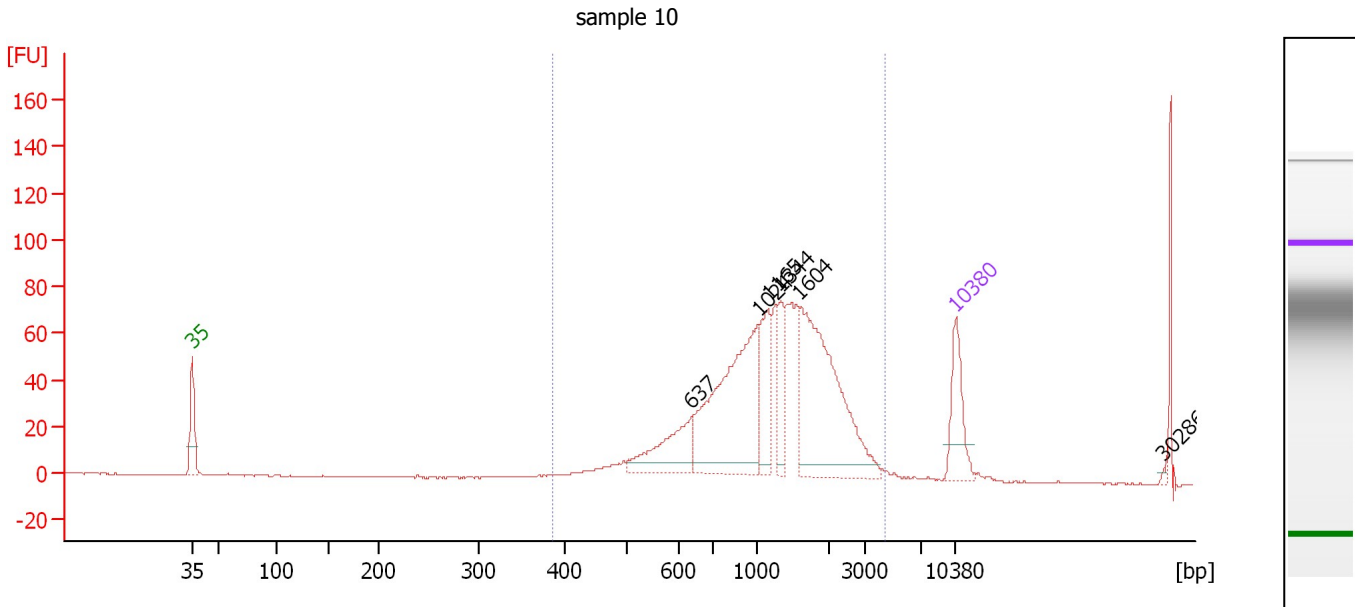
Region table for sample 9 : sample 9

From [bp]	To [bp]	Average Size [bp]	Molarity [pmol/l]	Conc. [pg/μl]	Corr. Area	% of Total	Size distribution in CV [%]	Color
357	5,194	1,276	1,307.2	764.43	748.0	95	61.0	Blue

Assay Class: High Sensitivity DNA Assay
 Data Path: C:\...ents and Settings\Bioanalyzer\2014-02-12\2014-02-12_004.xad

Created: 2/12/2014 2:13:51 PM
 Modified: 2/12/2014 2:55:45 PM

Electropherogram Summary Continued ...



Overall Results for sample 10 : sample 10

Number of peaks found: 6 Corr. Area 1: 1,017.8
 Noise: 0.2

Peak table for sample 10 : sample 10

Peak	Aligned Migration Time [s]	Size [bp]	Conc. [pg/μl]	Molarity [pmol/l]	Observations
1	43.00	35	125.00	5,411.3	Lower Marker
2	88.75	637	122.14	290.5	
3	94.86	1,024	342.03	506.0	
4	95.79	1,165	93.03	121.0	
5	96.97	1,344	61.77	69.6	
6	98.68	1,604	337.71	319.0	
7	113.00	10,380	75.00	10.9	Upper Marker
8	131.97	30,286	0.00	0.0	

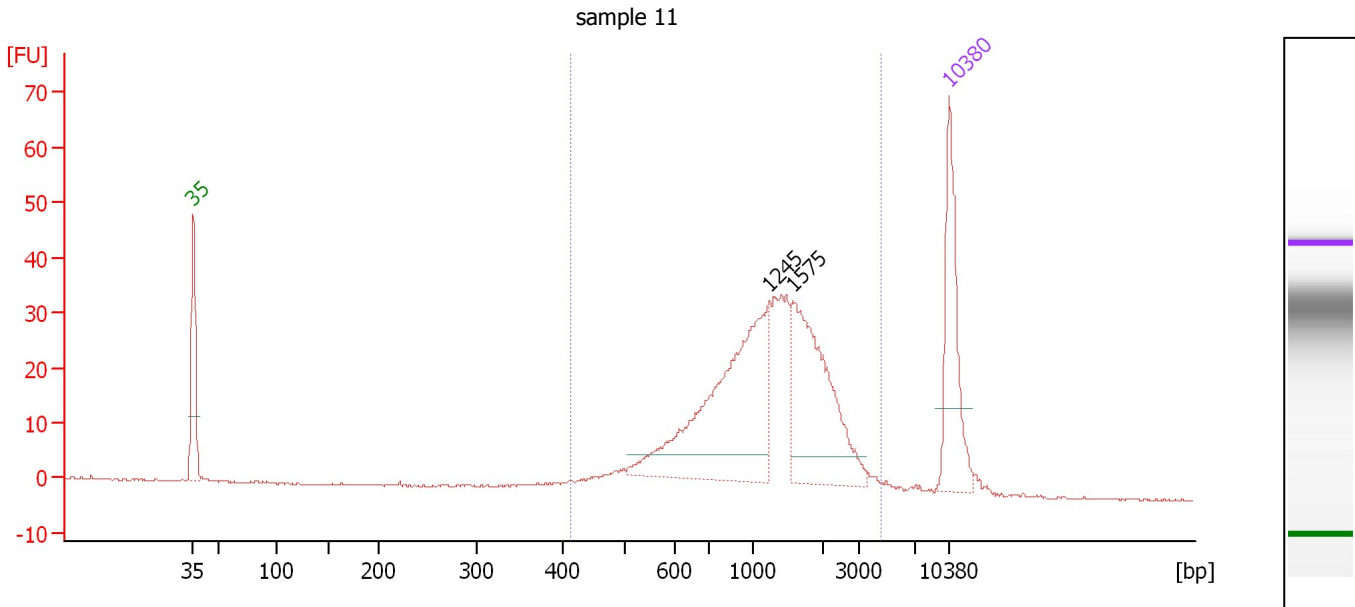
Region table for sample 10 : sample 10

From [bp]	To [bp]	Average Size [bp]	Molarity [pmol/l]	Conc. [pg/μl]	Corr. Area	% of Total	Size distribution in CV [%]	Color
385	4,491	1,336	1,898.7	1,261.09	1,017.8	95	49.1	Blue

Assay Class: High Sensitivity DNA Assay
 Data Path: C:\...ents and Settings\Bioanalyzer\2014-02-12\2014-02-12_004.xad

Created: 2/12/2014 2:13:51 PM
 Modified: 2/12/2014 2:55:45 PM

Electropherogram Summary Continued ...



Overall Results for sample 11 : sample 11

Number of peaks found: 2 Corr. Area 1: 458.5
 Noise: 0.1

Peak table for sample 11 : sample 11

Peak	Aligned Migration Time [s]	Size [bp]	Conc. [pg/μl]	Molarity [pmol/l]	Observations
1	43.00	35	125.00	5,411.3	Lower Marker
2	96.31	1,245	211.13	257.0	
3	98.49	1,575	143.26	137.8	
4	113.00	10,380	75.00	10.9	Upper Marker

Region table for sample 11 : sample 11

From [bp]	To [bp]	Average Size [bp]	Molarity [pmol/l]	Conc. [pg/μl]	Corr. Area	% of Total	Size distribution in CV [%]	Color
413	4,561	1,329	782.6	520.09	458.5	97	49.1	Blue

Assay Class: High Sensitivity DNA Assay
Data Path: C:\...ents and Settings\Bioanalyzer\2014-02-12\2014-02-12_004.xad

Created: 2/12/2014 2:13:51 PM
Modified: 2/12/2014 2:55:45 PM

Gel Image

