

Assay Class: High Sensitivity DNA Assay
Data Path: C:\...ents and Settings\Bioanalyzer\2014-02-13\2014-02-13_002.xad

Created: 2/13/2014 1:32:04 PM
Modified: 2/13/2014 2:13:27 PM

Electrophoresis File Run Summary

Instrument Information:

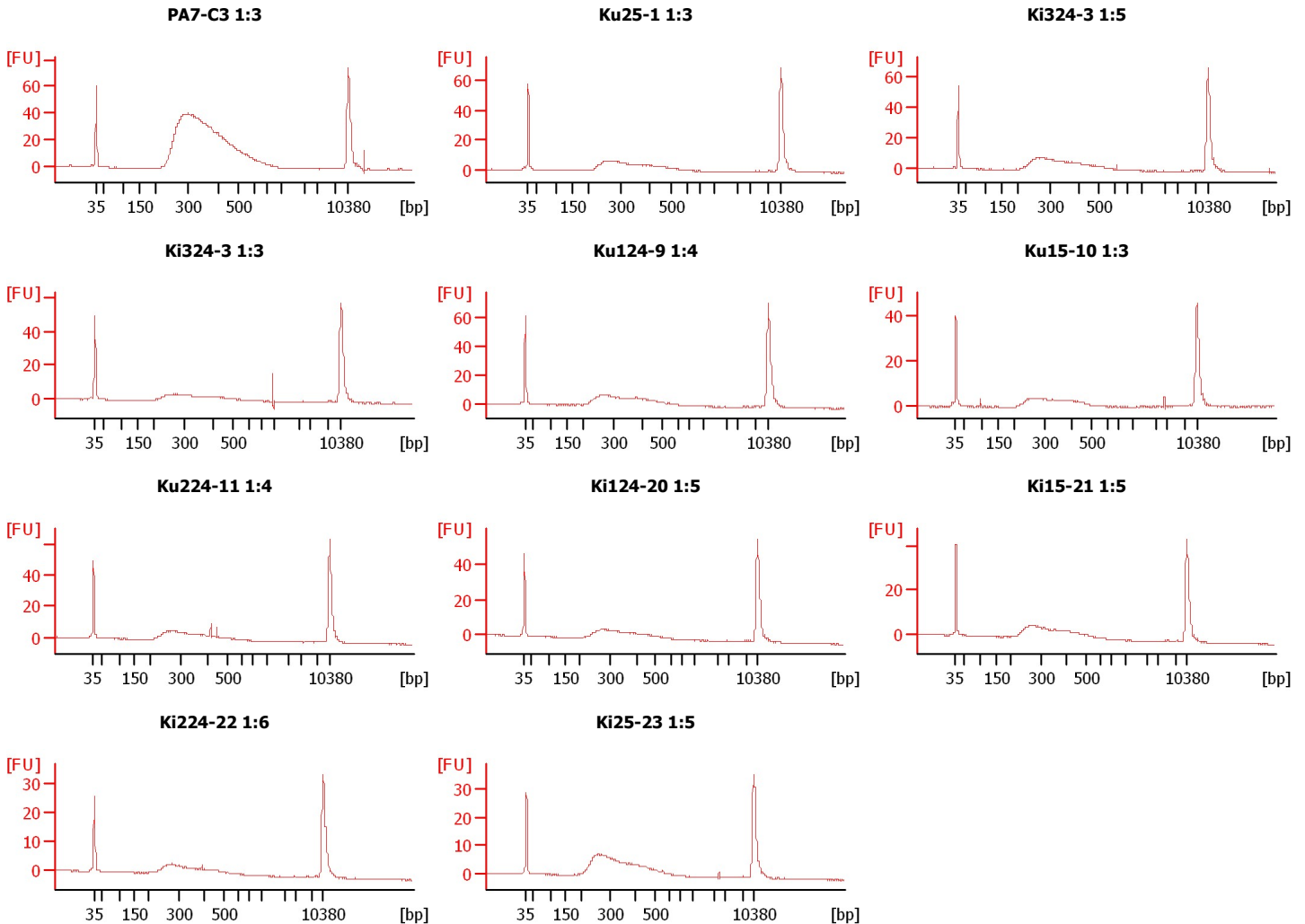
Instrument Name: DE13701086 Firmware: C.01.069
Serial#: DE13701086 Type: G2938B

Assay Information:

Assay Origin Path: C:\Program Files\Agilent\2100 bioanalyzer\2100 expert\assays\dsDNA\High Sensitivity DNA.xsy
Assay Class: High Sensitivity DNA Assay
Version: 1.03
Assay Comments: Copyright © 2003-2010 Agilent Technologies

Chip Information:

Chip Lot #:
Reagent Kit Lot #:
Chip Comments:



Assay Class: High Sensitivity DNA Assay
 Data Path: C:\...ents and Settings\Bioanalyzer\2014-02-13\2014-02-13_002.xad

Created: 2/13/2014 1:32:04 PM
 Modified: 2/13/2014 2:13:27 PM

Electrophoresis File Run Summary (Chip Summary)

Sample Name	Sample Comment	Rest. Digest	Status	Observation	Result Label	Result Color
PA7-C3 1:3		<input type="checkbox"/>	✓			
Ku25-1 1:3		<input type="checkbox"/>	✓			
Ki324-3 1:5		<input type="checkbox"/>	✓			
Ki324-3 1:3		<input type="checkbox"/>	✓			
Ku124-9 1:4		<input type="checkbox"/>	✓			
Ku15-10 1:3		<input type="checkbox"/>	✓			
Ku224-11 1:4		<input type="checkbox"/>	✓			
Ki124-20 1:5		<input type="checkbox"/>	✓			
Ki15-21 1:5		<input type="checkbox"/>	✓			
Ki224-22 1:6		<input type="checkbox"/>	✓			
Ki25-23 1:5		<input type="checkbox"/>	✓			
Ladder		<input type="checkbox"/>	✓			

Chip Lot #

Reagent Kit Lot #

Chip Comments :

Assay Class: High Sensitivity DNA Assay
 Data Path: C:\...ents and Settings\Bioanalyzer\2014-02-13\2014-02-13_002.xad

Created: 2/13/2014 1:32:04 PM
 Modified: 2/13/2014 2:13:27 PM

Electrophoresis Assay Details

General Analysis Settings

Number of Available Sample and Ladder Wells (Max.) : 12
 Minimum Visible Range [s] : 32
 Maximum Visible Range [s] : 138
 Start Analysis Time Range [s] : 33
 End Analysis Time Range [s] : 137.5
 Ladder Concentration [pg/μl] : 1950
 Uses Standard Area for Ladder Fragments
 Lower Marker Concentration [pg/μl] : 125
 Upper Marker Concentration [pg/μl] : 75
 Used Upper Marker for Quantitation
 Standard Curve Fit is Point to Point
 Show Data Aligned to Lower and Upper Marker

Integrator Settings

Integration Start Time [s] : 33.05
 Integration End Time [s] : 137
 Slope Threshold : 0.8
 Height Threshold [FU] : 5
 Area Threshold : 0.1
 Width Threshold [s] : 0.6
 Baseline Plateau [s] : 0.5

Filter Settings

Filter Width [s] : 0.5
 Polynomial Order : 4

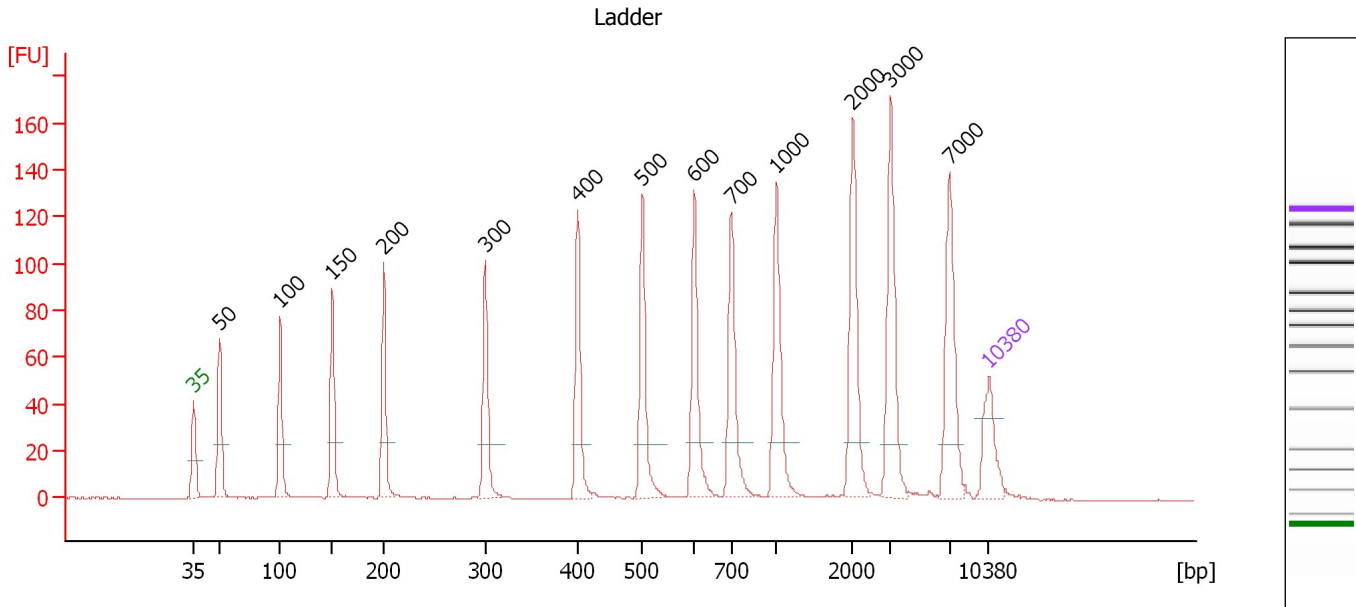
Ladder

Ladder Peak	Size	Area
1	35	160
2	50	210
3	100	208
4	150	221
5	200	242
6	300	270
7	400	305
8	500	306
9	600	336
10	700	321
11	1000	366
12	2000	413
13	3000	411
14	7000	400
15	10380	214

Assay Class: High Sensitivity DNA Assay
 Data Path: C:\...ents and Settings\Bioanalyzer\2014-02-13\2014-02-13_002.xad

Created: 2/13/2014 1:32:04 PM
 Modified: 2/13/2014 2:13:27 PM

Electropherogram Summary



Overall Results for Ladder

Noise: 0.1

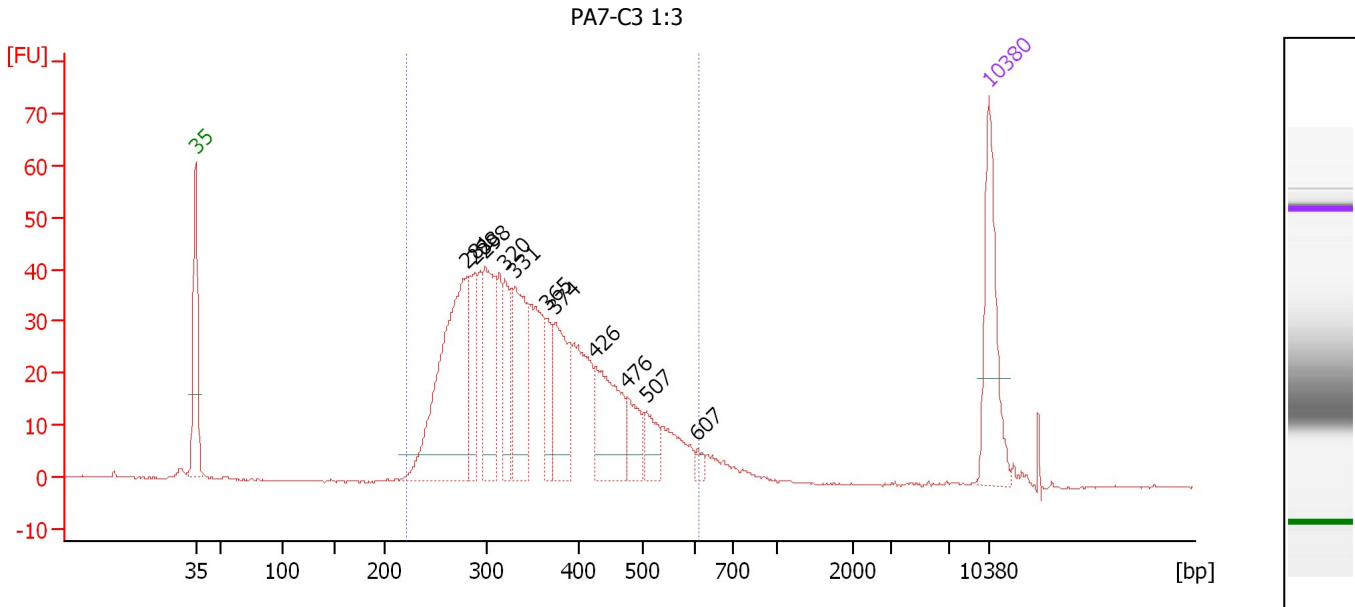
Peak table for Ladder

Peak	Aligned Migration Time [s]	Size [bp]	Conc. [pg/μl]	Molarity [pmol/l]	Observations
1	43.00	35	125.00	5,411.3	Lower Marker
2	45.25	50	150.00	4,545.5	Ladder Peak
3	50.61	100	150.00	2,272.7	Ladder Peak
4	55.21	150	150.00	1,515.2	Ladder Peak
5	59.71	200	150.00	1,136.4	Ladder Peak
6	68.68	300	150.00	757.6	Ladder Peak
7	76.80	400	150.00	568.2	Ladder Peak
8	82.48	500	150.00	454.5	Ladder Peak
9	87.04	600	150.00	378.8	Ladder Peak
10	90.32	700	150.00	324.7	Ladder Peak
11	94.31	1,000	150.00	227.3	Ladder Peak
12	101.03	2,000	150.00	113.6	Ladder Peak
13	104.36	3,000	150.00	75.8	Ladder Peak
14	109.53	7,000	150.00	32.5	Ladder Peak
15	113.00	10,380	75.00	10.9	Upper Marker

Assay Class: High Sensitivity DNA Assay
 Data Path: C:\...ents and Settings\Bioanalyzer\2014-02-13\2014-02-13_002.xad

Created: 2/13/2014 1:32:04 PM
 Modified: 2/13/2014 2:13:27 PM

Electropherogram Summary Continued ...



Overall Results for sample 1 : PA7-C3 1:3

Number of peaks found: 11 Corr. Area 1: 846.4
 Noise: 0.1

Peak table for sample 1 : PA7-C3 1:3

Peak	Aligned Migration Time [s]	Size [bp]	Conc. [pg/μl]	Molarity [pmol/l]	Observations
1	43.00	35	125.00	5,411.3	Lower Marker
2	66.94	281	276.55	1,493.0	
3	67.60	288	61.09	321.4	
4	68.54	298	115.71	587.4	
5	70.28	320	61.40	291.0	
6	71.18	331	102.97	471.7	
7	73.95	365	36.67	152.2	
8	74.71	374	88.57	358.6	
9	78.28	426	92.41	328.6	
10	81.10	476	35.42	112.8	
11	82.80	507	26.58	79.4	
12	87.27	607	6.63	16.5	
13	113.00	10,380	75.00	10.9	Upper Marker

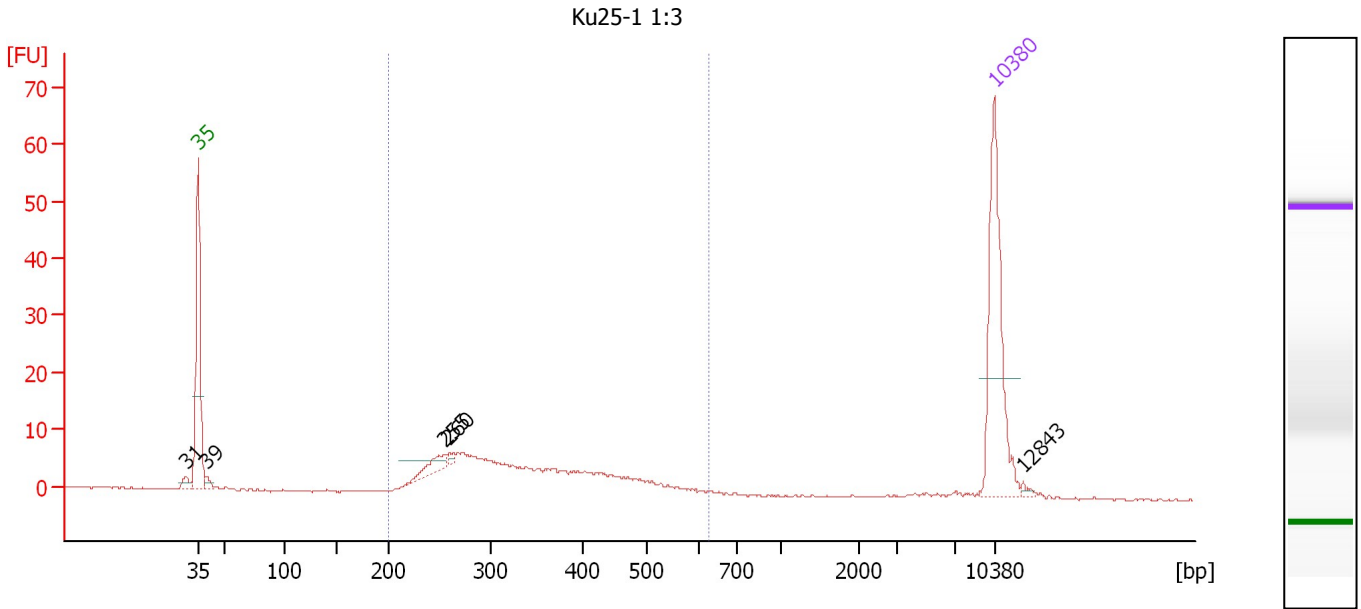
Region table for sample 1 : PA7-C3 1:3

From [bp]	To [bp]	Average Size [bp]	Molarity [pmol/l]	Conc. [pg/μl]	Corr. Area	% of Total	Size distribution in CV [%]	Color
221	611	358	5,598.4	1,234.57	846.4	96	23.3	Blue

Assay Class: High Sensitivity DNA Assay
 Data Path: C:\...ents and Settings\Bioanalyzer\2014-02-13\2014-02-13_002.xad

Created: 2/13/2014 1:32:04 PM
 Modified: 2/13/2014 2:13:27 PM

Electropherogram Summary Continued ...



Setpoint Deviations for sample 2 : Ku25-1 1:3

Height Threshold [FU] : 1

Overall Results for sample 2 : Ku25-1 1:3

Number of peaks found: 5 Corr. Area 1: 141.3
 Noise: 0.1

Peak table for sample 2 : Ku25-1 1:3

Peak	Aligned Migration Time [s]	Size [bp]	Conc. [pg/μl]	Molarity [pmol/l]	Observations
1	41.87	31	0.00	0.0	
2	43.00	35	125.00	5,411.3	Lower Marker
3	43.66	39	5.38	206.9	
4	64.66	255	14.72	87.4	
5	65.08	260	2.87	16.7	
6	113.00	10,380	75.00	10.9	Upper Marker
7	115.53	12,843	0.00	0.0	

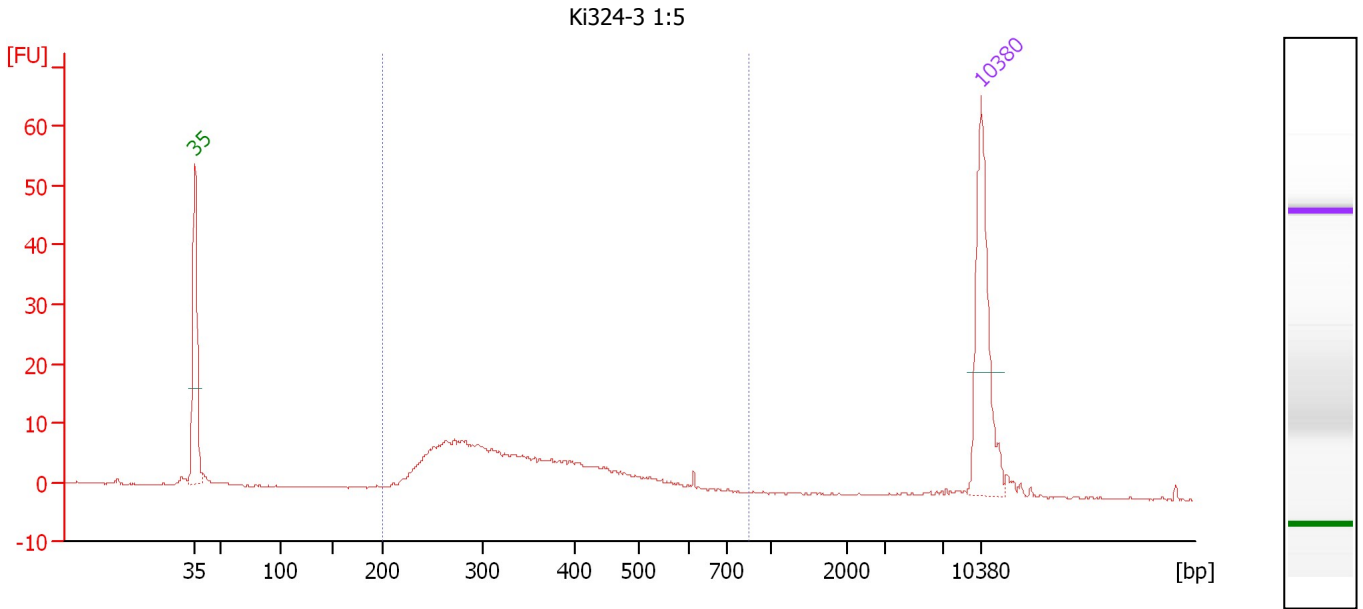
Region table for sample 2 : Ku25-1 1:3

From [bp]	To [bp]	Average Size [bp]	Molarity [pmol/l]	Conc. [pg/μl]	Corr. Area	% of Total	Size distribution in CV [%]	Color
200	628	344	1,040.3	216.33	141.3	89	26.0	Blue

Assay Class: High Sensitivity DNA Assay
 Data Path: C:\...ents and Settings\Bioanalyzer\2014-02-13\2014-02-13_002.xad

Created: 2/13/2014 1:32:04 PM
 Modified: 2/13/2014 2:13:27 PM

Electropherogram Summary Continued ...



Overall Results for sample 3 : Ki324-3 1:5

Number of peaks found: 0 Corr. Area 1: 171.4
 Noise: 0.1

Peak table for sample 3 : Ki324-3 1:5

Peak	Aligned Migration Time [s]	Size [bp]	Conc. [pg/μl]	Molarity [pmol/l]	Observations
1	43.00	35	125.00	5,411.3	Lower Marker
2	113.00	10,380	75.00	10.9	Upper Marker

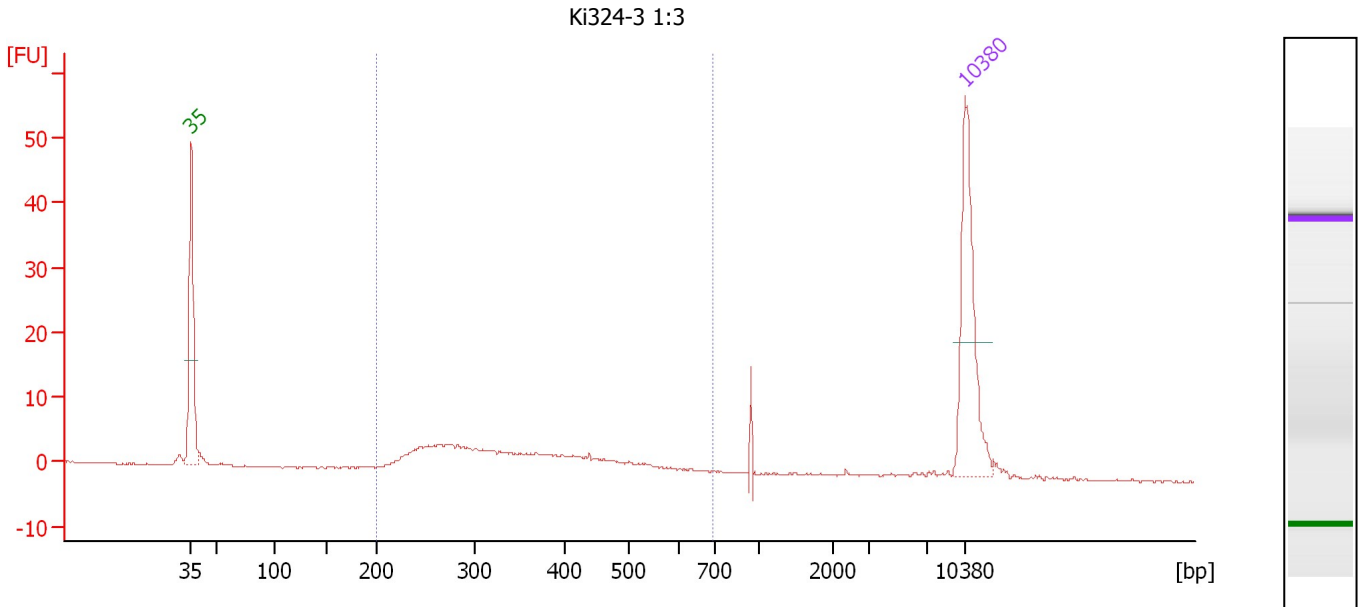
Region table for sample 3 : Ki324-3 1:5

From [bp]	To [bp]	Average Size [bp]	Molarity [pmol/l]	Conc. [pg/μl]	Corr. Area	% of Total	Size distribution in CV [%]	Color
200	845	354	1,244.4	264.02	171.4	91	28.0	Blue

Assay Class: High Sensitivity DNA Assay
 Data Path: C:\...ents and Settings\Bioanalyzer\2014-02-13\2014-02-13_002.xad

Created: 2/13/2014 1:32:04 PM
 Modified: 2/13/2014 2:13:27 PM

Electropherogram Summary Continued ...



Overall Results for sample 4 : Ki324-3 1:3

Number of peaks found: 0 Corr. Area 1: 84.9
 Noise: 0.1

Peak table for sample 4 : Ki324-3 1:3

Peak	Aligned Migration Time [s]	Size [bp]	Conc. [pg/μl]	Molarity [pmol/l]	Observations
1	43.00	35	125.00	5,411.3	Lower Marker
2	113.00	10,380	75.00	10.9	Upper Marker

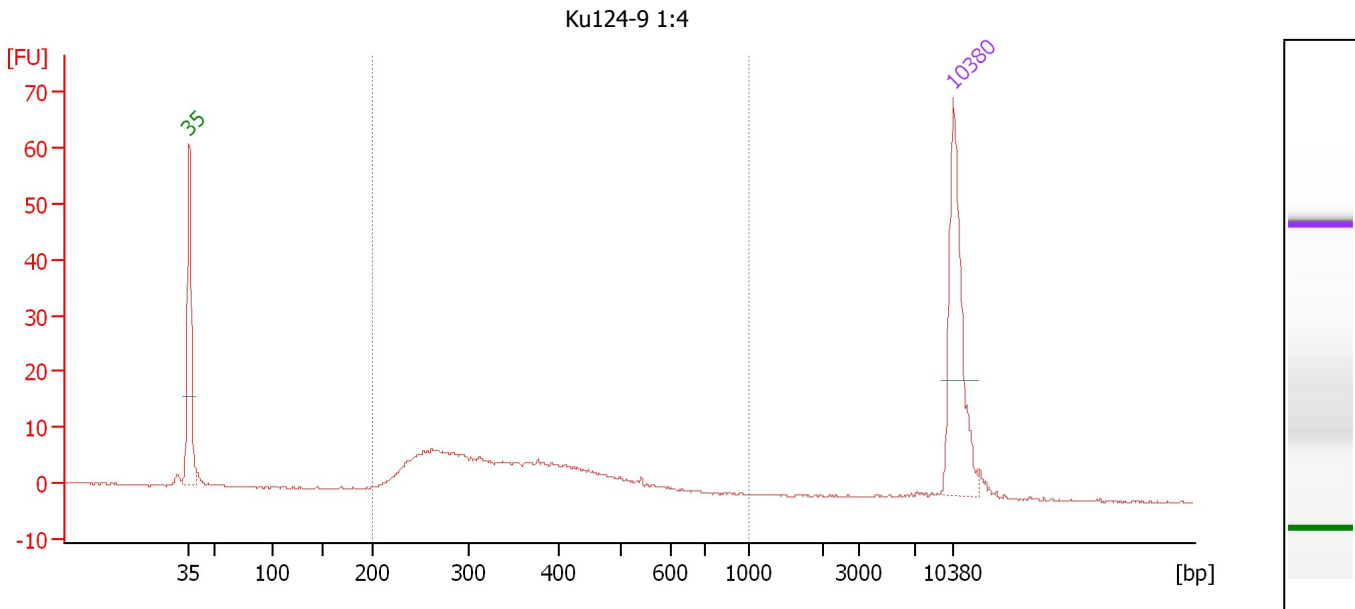
Region table for sample 4 : Ki324-3 1:3

From [bp]	To [bp]	Average Size [bp]	Molarity [pmol/l]	Conc. [pg/μl]	Corr. Area	% of Total	Size distribution in CV [%]	Color
200	694	354	687.8	145.30	84.9	84	28.1	Blue

Assay Class: High Sensitivity DNA Assay
 Data Path: C:\...ents and Settings\Bioanalyzer\2014-02-13\2014-02-13_002.xad

Created: 2/13/2014 1:32:04 PM
 Modified: 2/13/2014 2:13:27 PM

Electropherogram Summary Continued ...



Overall Results for sample 5 : Ku124-9 1:4

Number of peaks found: 0 Corr. Area 1: 163.2
 Noise: 0.2

Peak table for sample 5 : Ku124-9 1:4

Peak	Aligned Migration Time [s]	Size [bp]	Conc. [pg/μl]	Molarity [pmol/l]	Observations
1	43.00	35	125.00	5,411.3	Lower Marker
2	113.00	10,380	75.00	10.9	Upper Marker

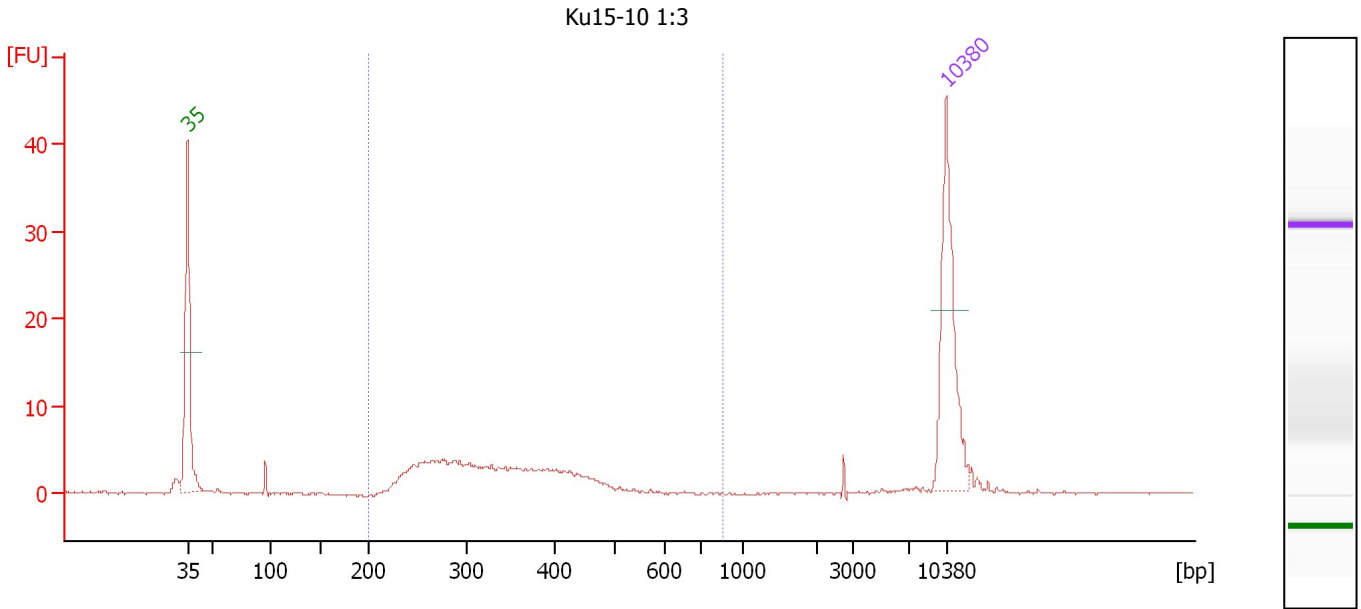
Region table for sample 5 : Ku124-9 1:4

From [bp]	To [bp]	Average Size [bp]	Molarity [pmol/l]	Conc. [pg/μl]	Corr. Area	% of Total	Size distribution in CV [%]	Color
200	1,000	357	1,068.5	226.86	163.2	91	29.6	Blue

Assay Class: High Sensitivity DNA Assay
 Data Path: C:\...ents and Settings\Bioanalyzer\2014-02-13\2014-02-13_002.xad

Created: 2/13/2014 1:32:04 PM
 Modified: 2/13/2014 2:13:27 PM

Electropherogram Summary Continued ...



Overall Results for sample 6 : Ku15-10 1:3

Number of peaks found: 0 Corr. Area 1: 74.1
 Noise: 0.1

Peak table for sample 6 : Ku15-10 1:3

Peak	Aligned Migration Time [s]	Size [bp]	Conc. [pg/μl]	Molarity [pmol/l]	Observations
1	43.00	35	125.00	5,411.3	Lower Marker
2	113.00	10,380	75.00	10.9	Upper Marker

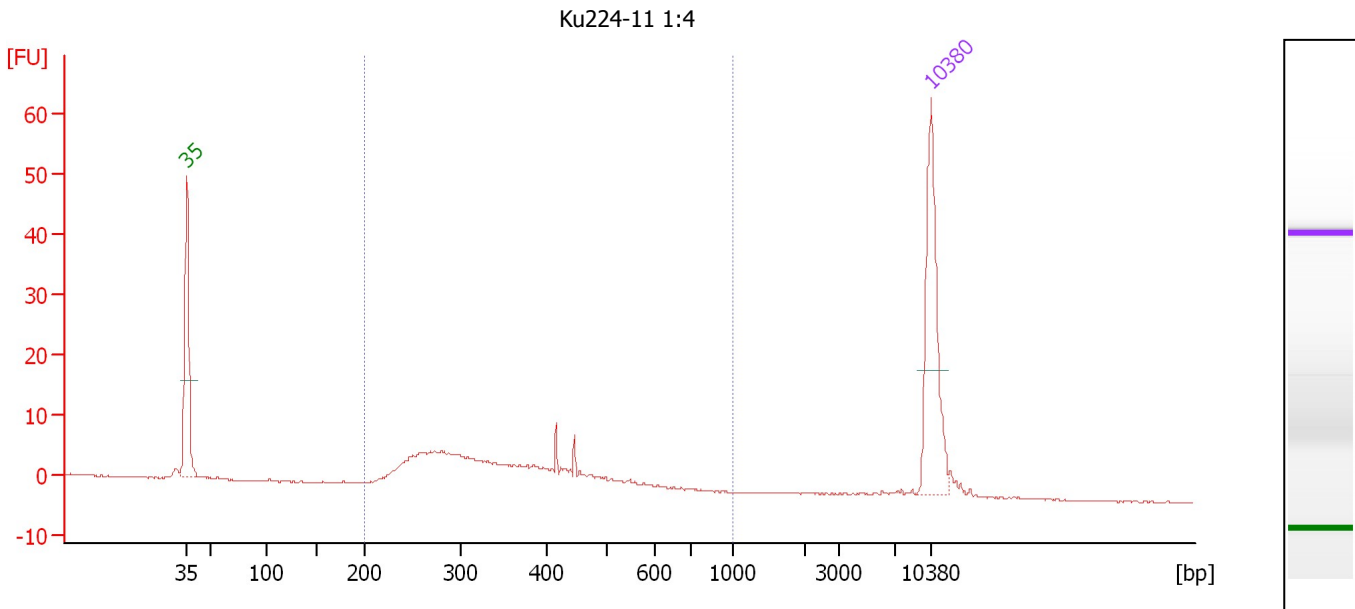
Region table for sample 6 : Ku15-10 1:3

From [bp]	To [bp]	Average Size [bp]	Molarity [pmol/l]	Conc. [pg/μl]	Corr. Area	% of Total	Size distribution in CV [%]	Color
200	854	334	822.9	170.93	74.1	90	21.1	Blue

Assay Class: High Sensitivity DNA Assay
 Data Path: C:\...ents and Settings\Bioanalyzer\2014-02-13\2014-02-13_002.xad

Created: 2/13/2014 1:32:04 PM
 Modified: 2/13/2014 2:13:27 PM

Electropherogram Summary Continued ...



Overall Results for sample 7 : Ku224-11 1:4

Number of peaks found: 0 Corr. Area 1: 116.0
 Noise: 0.1

Peak table for sample 7 : Ku224-11 1:4

Peak	Aligned Migration Time [s]	Size [bp]	Conc. [pg/μl]	Molarity [pmol/l]	Observations
1	43.00	35	125.00	5,411.3	Lower Marker
2	113.00	10,380	75.00	10.9	Upper Marker

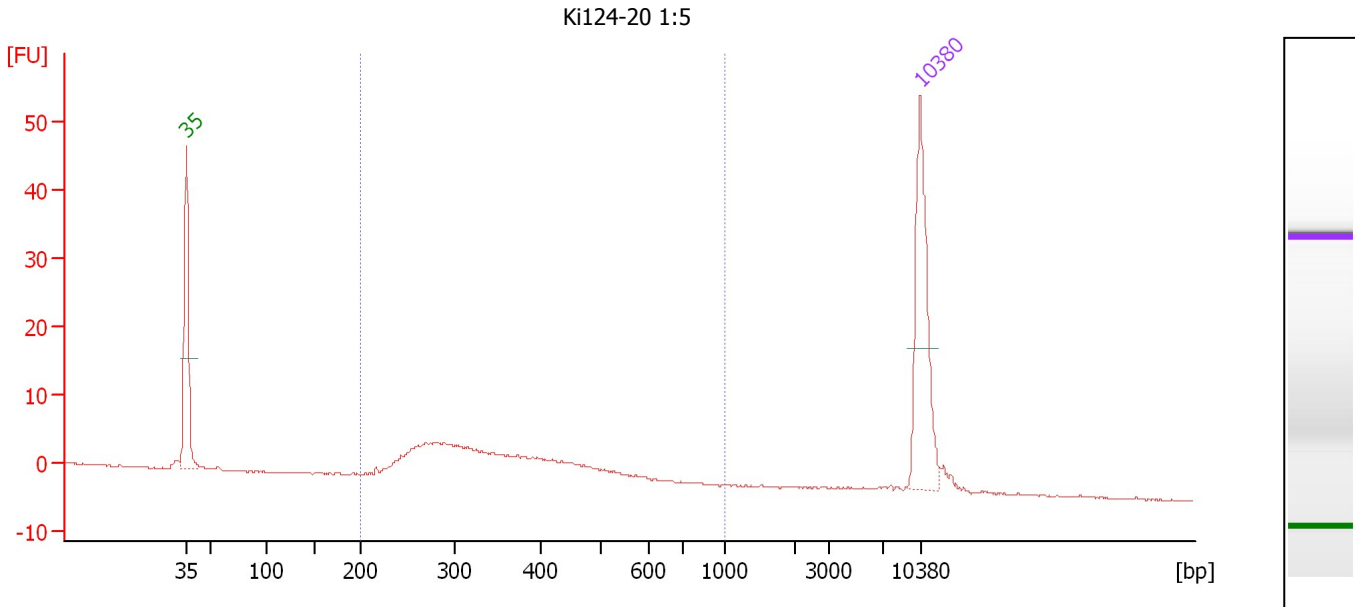
Region table for sample 7 : Ku224-11 1:4

From [bp]	To [bp]	Average Size [bp]	Molarity [pmol/l]	Conc. [pg/μl]	Corr. Area	% of Total	Size distribution in CV [%]	Color
200	1,000	354	917.1	195.67	116.0	92	26.8	Blue

Assay Class: High Sensitivity DNA Assay
 Data Path: C:\...ents and Settings\Bioanalyzer\2014-02-13\2014-02-13_002.xad

Created: 2/13/2014 1:32:04 PM
 Modified: 2/13/2014 2:13:27 PM

Electropherogram Summary Continued ...



Overall Results for sample 8 : Ki124-20 1:5

Number of peaks found: 0 Corr. Area 1: 102.8
 Noise: 0.1

Peak table for sample 8 : Ki124-20 1:5

Peak	Aligned Migration Time [s]	Size [bp]	Conc. [pg/μl]	Molarity [pmol/l]	Observations
1	43.00	35	125.00	5,411.3	Lower Marker
2	113.00	10,380	75.00	10.9	Upper Marker

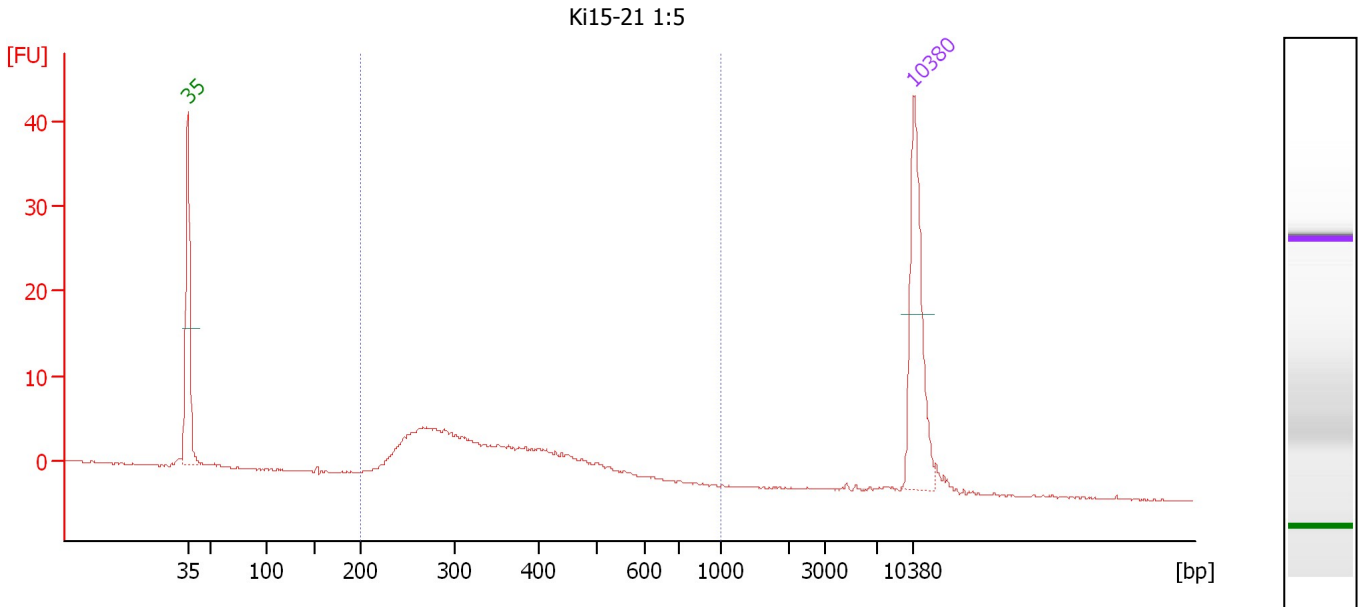
Region table for sample 8 : Ki124-20 1:5

From [bp]	To [bp]	Average Size [bp]	Molarity [pmol/l]	Conc. [pg/μl]	Corr. Area	% of Total	Size distribution in CV [%]	Color
200	1,000	362	835.1	181.59	102.8	90	28.0	Blue

Assay Class: High Sensitivity DNA Assay
 Data Path: C:\...ents and Settings\Bioanalyzer\2014-02-13\2014-02-13_002.xad

Created: 2/13/2014 1:32:04 PM
 Modified: 2/13/2014 2:13:27 PM

Electropherogram Summary Continued ...



Overall Results for sample 9 : Ki15-21 1:5

Number of peaks found: 0 Corr. Area 1: 109.1
 Noise: 0.1

Peak table for sample 9 : Ki15-21 1:5

Peak	Aligned Migration Time [s]	Size [bp]	Conc. [pg/μl]	Molarity [pmol/l]	Observations
1	43.00	35	125.00	5,411.3	Lower Marker
2	113.00	10,380	75.00	10.9	Upper Marker

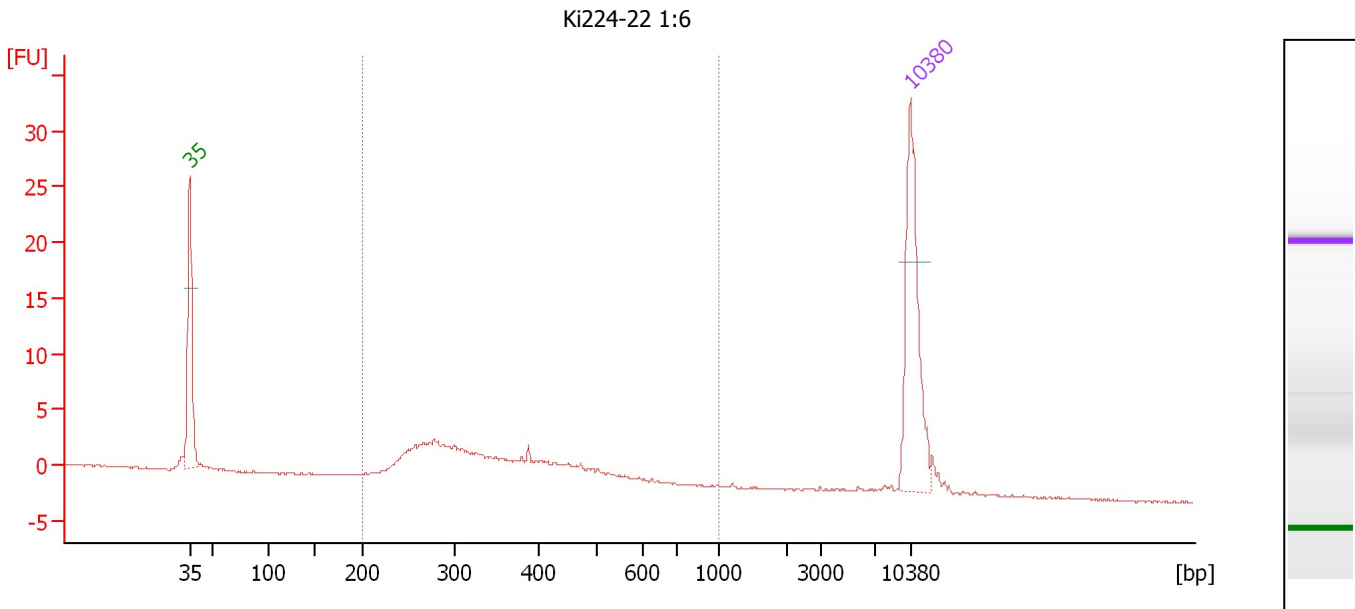
Region table for sample 9 : Ki15-21 1:5

From [bp]	To [bp]	Average Size [bp]	Molarity [pmol/l]	Conc. [pg/μl]	Corr. Area	% of Total	Size distribution in CV [%]	Color
200	1,000	352	1,127.0	240.10	109.1	95	26.0	Blue

Assay Class: High Sensitivity DNA Assay
 Data Path: C:\...ents and Settings\Bioanalyzer\2014-02-13\2014-02-13_002.xad

Created: 2/13/2014 1:32:04 PM
 Modified: 2/13/2014 2:13:27 PM

Electropherogram Summary Continued ...



Overall Results for sample 10 : Ki224-22 1:6

Number of peaks found: 0 Corr. Area 1: 59.7
 Noise: 0.1

Peak table for sample 10 : Ki224-22 1:6

Peak	Aligned Migration Time [s]	Size [bp]	Conc. [pg/μl]	Molarity [pmol/l]	Observations
1	43.00	35	125.00	5,411.3	Lower Marker
2	113.00	10,380	75.00	10.9	Upper Marker

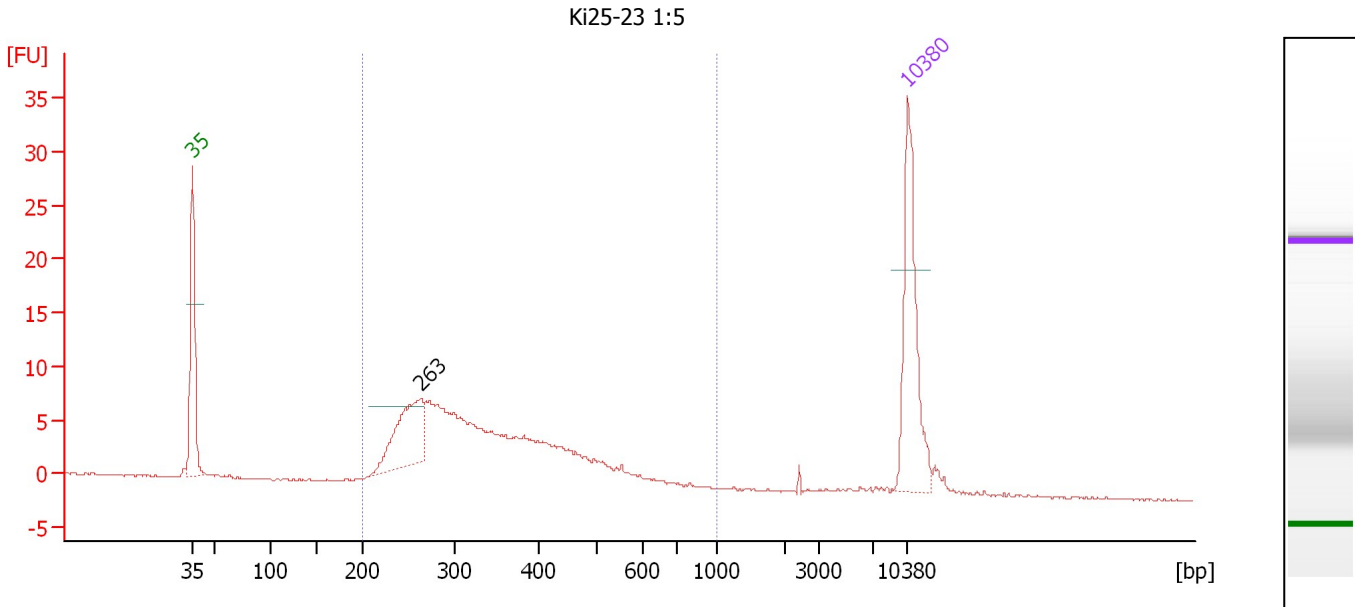
Region table for sample 10 : Ki224-22 1:6

From [bp]	To [bp]	Average Size [bp]	Molarity [pmol/l]	Conc. [pg/μl]	Corr. Area	% of Total	Size distribution in CV [%]	Color
200	1,000	356	771.9	165.72	59.7	91	27.3	Blue

Assay Class: High Sensitivity DNA Assay
 Data Path: C:\...ents and Settings\Bioanalyzer\2014-02-13\2014-02-13_002.xad

Created: 2/13/2014 1:32:04 PM
 Modified: 2/13/2014 2:13:27 PM

Electropherogram Summary Continued ...



Overall Results for sample 11 : Ki25-23 1:5

Number of peaks found: 1 Corr. Area 1: 154.0
 Noise: 0.1

Peak table for sample 11 : Ki25-23 1:5

Peak	Aligned Migration Time [s]	Size [bp]	Conc. [pg/μl]	Molarity [pmol/l]	Observations
1	43.00	35	125.00	5,411.3	Lower Marker
2	65.32	263	77.97	449.9	
3	113.00	10,380	75.00	10.9	Upper Marker

Region table for sample 11 : Ki25-23 1:5

From [bp]	To [bp]	Average Size [bp]	Molarity [pmol/l]	Conc. [pg/μl]	Corr. Area	% of Total	Size distribution in CV [%]	Color
200	1,000	350	1,978.2	412.74	154.0	95	29.7	Blue

Assay Class: High Sensitivity DNA Assay
Data Path: C:\...ents and Settings\Bioanalyzer\2014-02-13\2014-02-13_002.xad

Created: 2/13/2014 1:32:04 PM
Modified: 2/13/2014 2:13:27 PM

Gel Image