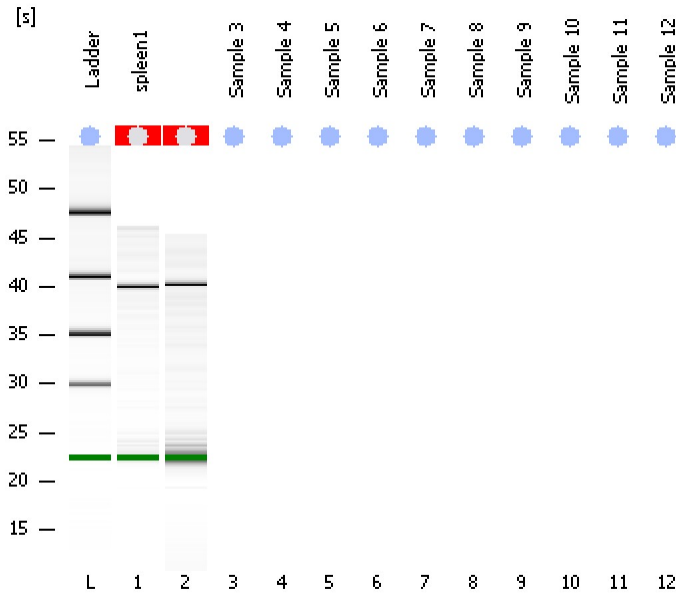


Assay Class: Eukaryote Total RNA Nano  
Data Path: C:\...ents and Settings\Bioanalyzer\2014-02-14\2014-02-14\_003.xad

Created: 2/14/2014 10:37:35 AM  
Modified: 2/14/2014 10:47:47 AM

**Electrophoresis File Run Summary**



Instrument Information:

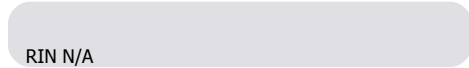
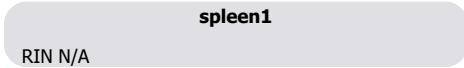
Instrument Name: DE13701086      Firmware: C.01.069  
Serial#: DE13701086      Type: G2938B

Assay Information:

Assay Origin Path: C:\Program Files\Agilent\2100 bioanalyzer\2100 expert\assays\RNA\Eukaryote Total RNA Nano Series II.xsy  
Assay Class: Eukaryote Total RNA Nano  
Version: 2.6  
Assay Comments: Total RNA Analysis ng sensitivity (Eukaryote)  
© Copyright 2003 - 2009 Agilent Technologies, Inc.

Chip Information:

Chip Lot #:  
Reagent Kit Lot #:  
Chip Comments:



Assay Class: Eukaryote Total RNA Nano  
 Data Path: C:\...ents and Settings\Bioanalyzer\2014-02-14\2014-02-14\_003.xad

Created: 2/14/2014 10:37:35 AM  
 Modified: 2/14/2014 10:47:47 AM

**Electrophoresis File Run Summary (Chip Summary)**

Sample Name	Sample Comment	Status	Result Label	Result Color
spleen1		✓	RIN N/A	
		✓	RIN N/A	
Sample 3				
Sample 4				
Sample 5				
Sample 6				
Sample 7				
Sample 8				
Sample 9				
Sample 10				
Sample 11				
Sample 12				
Ladder		✓	All Other Samples	

**Chip Lot #**

**Reagent Kit Lot #**

**Chip Comments :**

Assay Class: Eukaryote Total RNA Nano  
Data Path: C:\...ents and Settings\Bioanalyzer\2014-02-14\2014-02-14\_003.xad

Created: 2/14/2014 10:37:35 AM  
Modified: 2/14/2014 10:47:47 AM

**Electrophoresis Assay Details**

**General Analysis Settings**

Number of Available Sample and Ladder Wells (Max.) : 13  
Minimum Visible Range [s] : 17  
Maximum Visible Range [s] : 70  
Start Analysis Time Range [s] : 19  
End Analysis Time Range [s] : 69  
Ladder Concentration [ng/μl] : 150  
Lower Marker Concentration [ng/μl] : 0  
Upper Marker Concentration [ng/μl] : 0  
Used Lower Marker for Quantitation  
Standard Curve Fit is Logarithmic  
Show Data Aligned to Lower Marker

**Integrator Settings**

Integration Start Time [s] : 19  
Integration End Time [s] : 69  
Slope Threshold : 0.6  
Height Threshold [FU] : 0.5  
Area Threshold : 0.2  
Width Threshold [s] : 0.5  
Baseline Plateau [s] : 6

**Filter Settings**

Filter Width [s] : 0.5  
Polynomial Order : 4

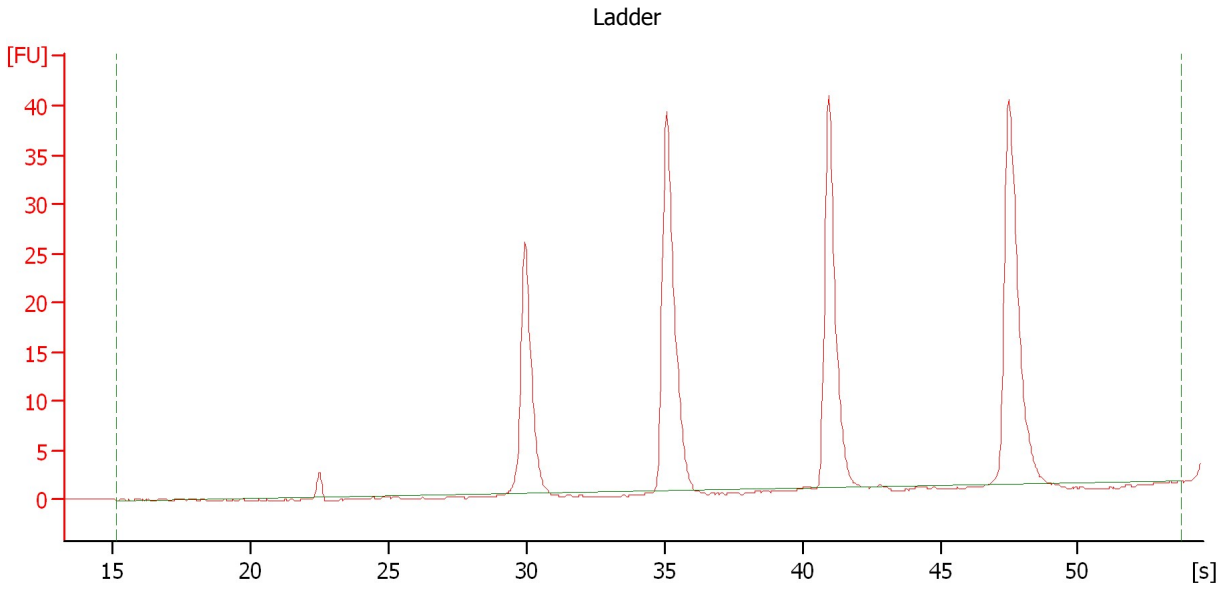
**Ladder**

Ladder Peak	Size
1	25
2	200
3	500
4	1000
5	2000
6	4000

Assay Class: Eukaryote Total RNA Nano  
Data Path: C:\...ents and Settings\Bioanalyzer\2014-02-14\2014-02-14\_003.xad

Created: 2/14/2014 10:37:35 AM  
Modified: 2/14/2014 10:47:47 AM

**Electropherogram Summary**



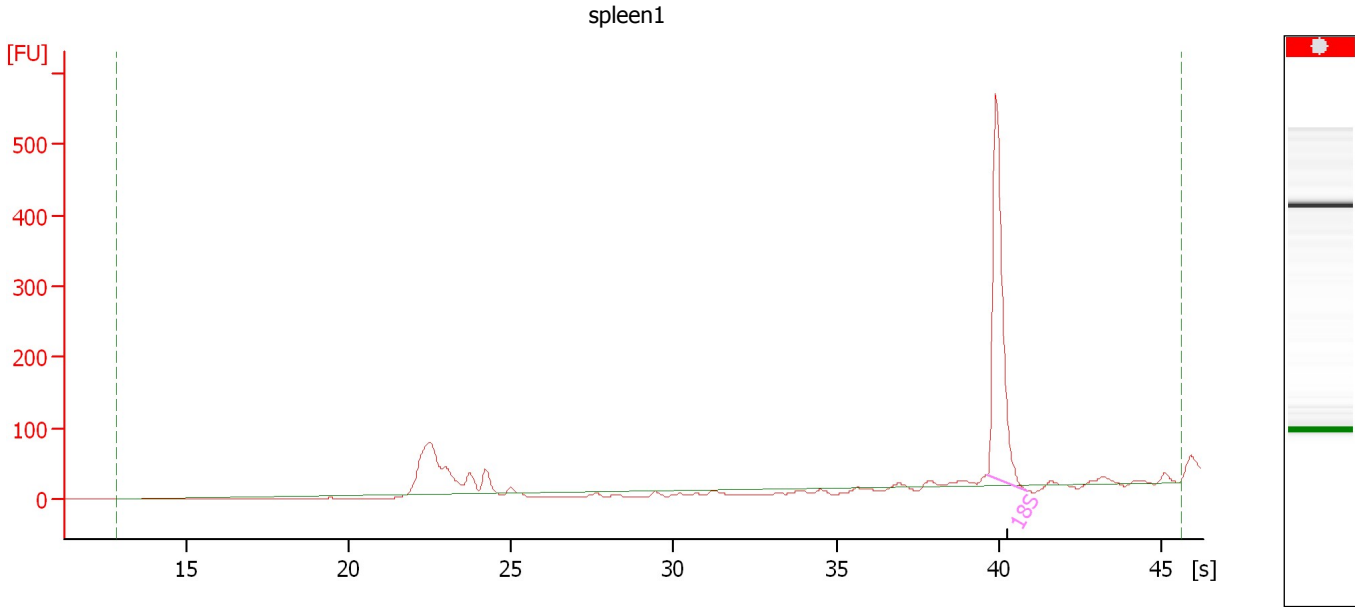
**Overall Results for Ladder**

RNA Area:	183.1	Result Flagging Color:	<span style="background-color: #add8e6; border: 1px solid black; display: inline-block; width: 20px; height: 10px;"></span>
RNA Concentration:	150 ng/μl	Result Flagging Label:	All Other Samples

Assay Class: Eukaryote Total RNA Nano  
 Data Path: C:\...ents and Settings\Bioanalyzer\2014-02-14\2014-02-14\_003.xad

Created: 2/14/2014 10:37:35 AM  
 Modified: 2/14/2014 10:47:47 AM

**Electropherogram Summary Continued ...**



**Overall Results for sample 1 : spleen1**

RNA Area:	585.1	RNA Integrity Number (RIN):	N/A (B.02.08)
RNA Concentration:	479 ng/μl	Result Flagging Color:	<span style="background-color: #cccccc; border: 1px solid black; display: inline-block; width: 20px; height: 10px;"></span>
rRNA Ratio [28s / 18s]:	0.0	Result Flagging Label:	RIN N/A

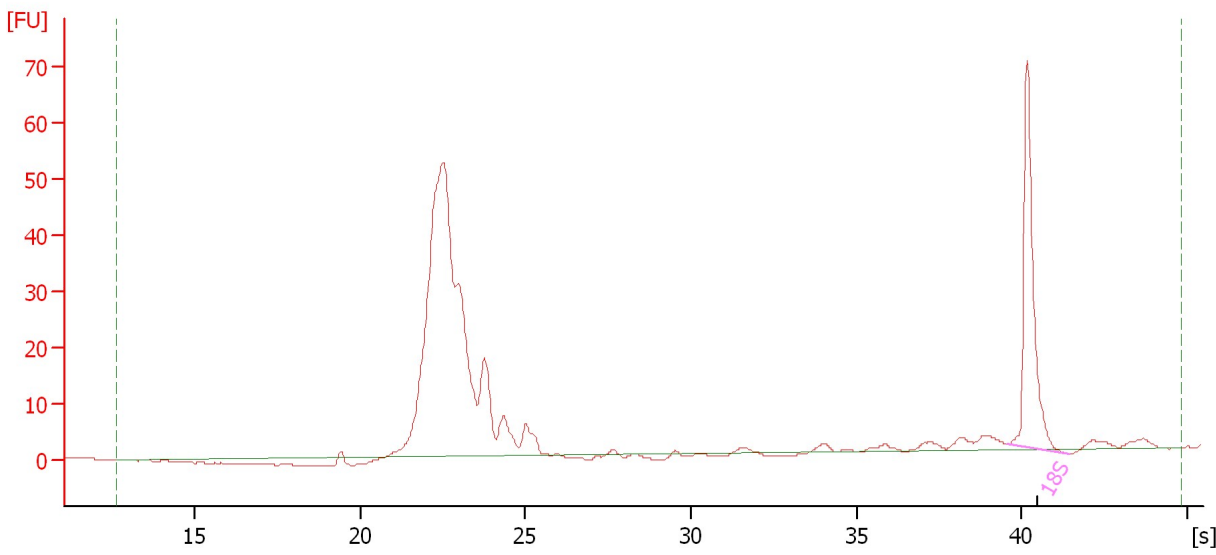
**Fragment table for sample 1 : spleen1**

Name	Start Time [s]	End Time [s]	Area	% of total Area
18S	39.65	40.87	447.0	76.4

Assay Class: Eukaryote Total RNA Nano  
Data Path: C:\...ents and Settings\Bioanalyzer\2014-02-14\2014-02-14\_003.xad

Created: 2/14/2014 10:37:35 AM  
Modified: 2/14/2014 10:47:47 AM

**Electropherogram Summary Continued ...**



**Overall Results for sample 2 :** -

RNA Area:	123.0	RNA Integrity Number (RIN):	N/A (B.02.08)
RNA Concentration:	101 ng/μl	Result Flagging Color:	<span style="background-color: #cccccc; border: 1px solid black; display: inline-block; width: 20px; height: 10px;"></span>
rRNA Ratio [28s / 18s]:	0.0	Result Flagging Label:	RIN N/A

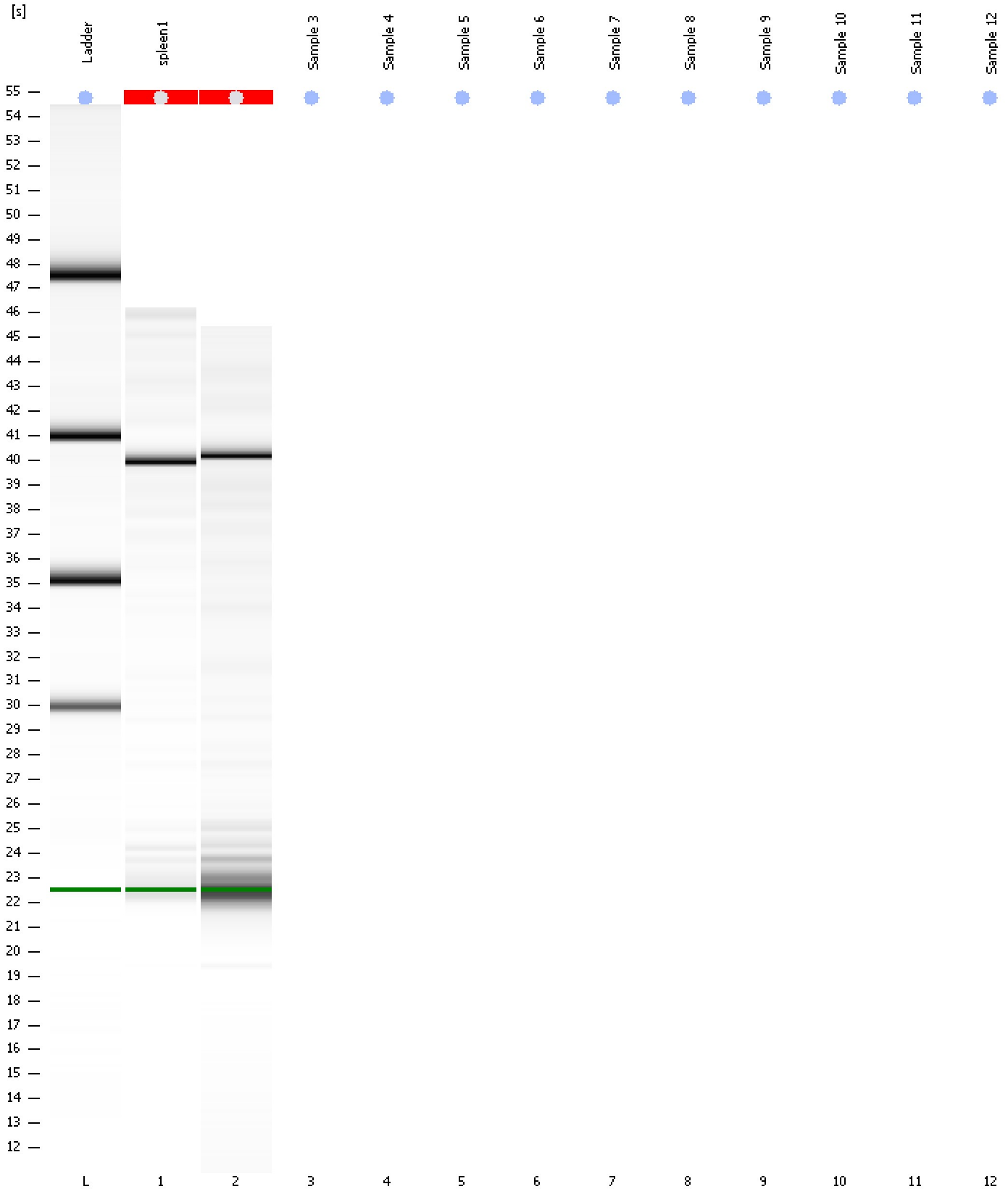
**Fragment table for sample 2 :** -

Name	Start Time [s]	End Time [s]	Area	% of total Area
18S	39.58	41.43	54.3	44.1

Assay Class: Eukaryote Total RNA Nano  
Data Path: C:\...ents and Settings\Bioanalyzer\2014-02-14\2014-02-14\_003.xad

Created: 2/14/2014 10:37:35 AM  
Modified: 2/14/2014 10:47:47 AM

**Gel Image**



Assay Class: Eukaryote Total RNA Nano  
Data Path: C:\...ents and Settings\Bioanalyzer\2014-02-14\2014-02-14\_003.xad

Created: 2/14/2014 10:37:35 AM  
Modified: 2/14/2014 10:47:47 AM

**Invalid Samples**

- Sample 3 has not been run, no results available.
- Sample 4 has not been run, no results available.
- Sample 5 has not been run, no results available.
- Sample 6 has not been run, no results available.
- Sample 7 has not been run, no results available.
- Sample 8 has not been run, no results available.
- Sample 9 has not been run, no results available.
- Sample 10 has not been run, no results available.
- Sample 11 has not been run, no results available.
- Sample 12 has not been run, no results available.