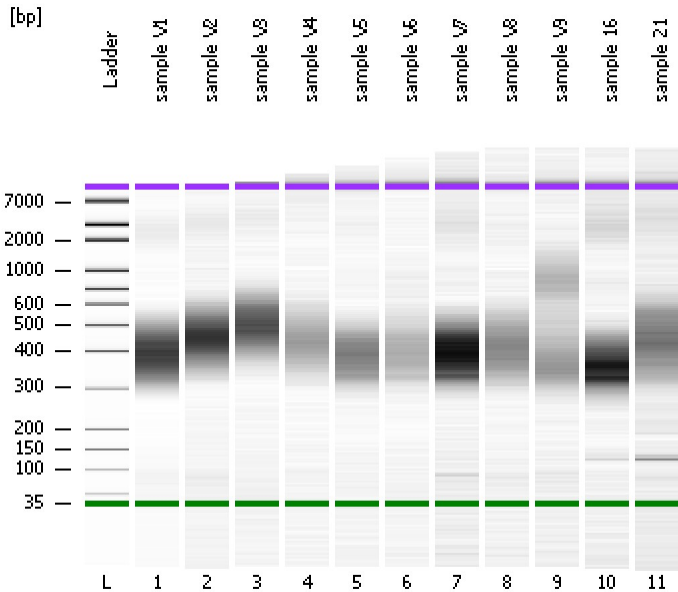


Assay Class: High Sensitivity DNA Assay  
Data Path: C:\...ents and Settings\Bioanalyzer\2014-02-19\2014-02-19\_004.xad

Created: 2/19/2014 12:35:04 PM  
Modified: 2/19/2014 2:06:03 PM

### Electrophoresis File Run Summary



#### Instrument Information:

Instrument Name: DE13701086      Firmware: C.01.069  
Serial#: DE13701086      Type: G2938B

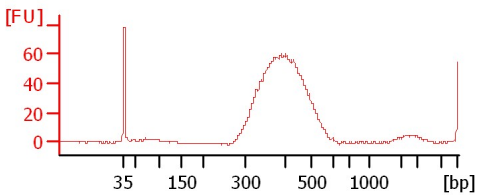
#### Assay Information:

Assay Origin Path: C:\Program Files\Agilent\2100 bioanalyzer\2100 expert\assays\dsDNA\High Sensitivity DNA.xsy  
Assay Class: High Sensitivity DNA Assay  
Version: 1.03  
Assay Comments: Copyright © 2003-2010 Agilent Technologies

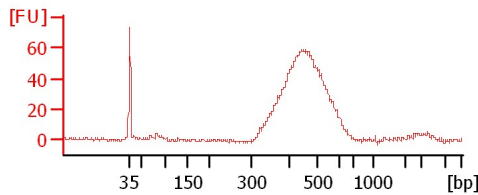
#### Chip Information:

Chip Lot #:      Reagent Kit Lot #:  
Chip Comments:

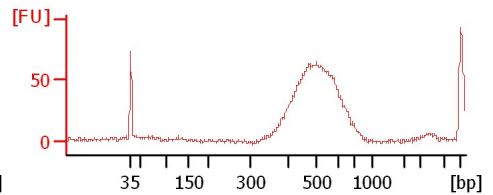
sample V1



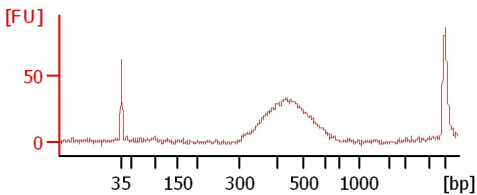
sample V2



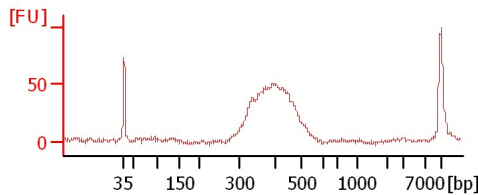
sample V3



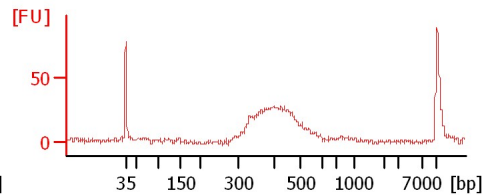
sample V4



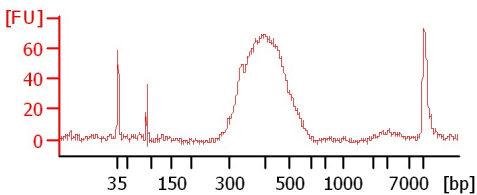
sample V5



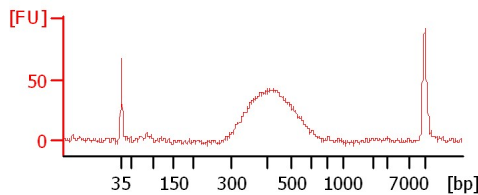
sample V6



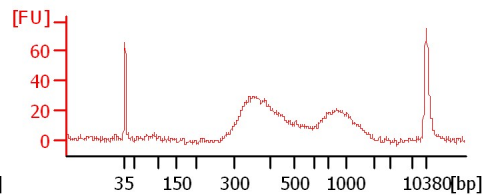
sample V7



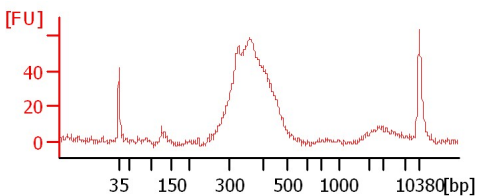
sample V8



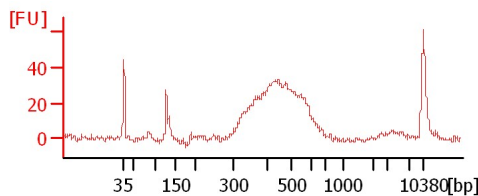
sample V9



sample 16



sample 21



Assay Class: High Sensitivity DNA Assay  
Data Path: C:\...ents and Settings\Bioanalyzer\2014-02-19\2014-02-19\_004.xad

Created: 2/19/2014 12:35:04 PM  
Modified: 2/19/2014 2:06:03 PM

**Electrophoresis File Run Summary (Chip Summary)**

Sample Name	Sample Comment	Rest. Digest	Status	Observation	Result Label	Result Color
sample V1		<input type="checkbox"/>	✓			
sample V2		<input type="checkbox"/>	✓			
sample V3		<input type="checkbox"/>	✓			
sample V4		<input type="checkbox"/>	✓			
sample V5		<input type="checkbox"/>	✓			
sample V6		<input type="checkbox"/>	✓			
sample V7		<input type="checkbox"/>	✓			
sample V8		<input type="checkbox"/>	✓			
sample V9		<input type="checkbox"/>	✓			
sample 16		<input type="checkbox"/>	✓			
sample 21		<input type="checkbox"/>	✓			
Ladder		<input type="checkbox"/>	✓			

Chip Lot #

Reagent Kit Lot #

Chip Comments :

Assay Class: High Sensitivity DNA Assay  
Data Path: C:\...ents and Settings\Bioanalyzer\2014-02-19\2014-02-19\_004.xad

Created: 2/19/2014 12:35:04 PM  
Modified: 2/19/2014 2:06:03 PM

**Electrophoresis Assay Details**

**General Analysis Settings**

Number of Available Sample and Ladder Wells (Max.) : 12  
Minimum Visible Range [s] : 32  
Maximum Visible Range [s] : 138  
Start Analysis Time Range [s] : 33  
End Analysis Time Range [s] : 137.5  
Ladder Concentration [pg/μl] : 1950  
Uses Standard Area for Ladder Fragments  
Lower Marker Concentration [pg/μl] : 125  
Upper Marker Concentration [pg/μl] : 75  
Used Upper Marker for Quantitation  
Standard Curve Fit is Point to Point  
Show Data Aligned to Lower and Upper Marker

**Integrator Settings**

Integration Start Time [s] : 33.05  
Integration End Time [s] : 137  
Slope Threshold : 0.8  
Height Threshold [FU] : 5  
Area Threshold : 0.1  
Width Threshold [s] : 0.6  
Baseline Plateau [s] : 0.5

**Filter Settings**

Filter Width [s] : 0.5  
Polynomial Order : 4

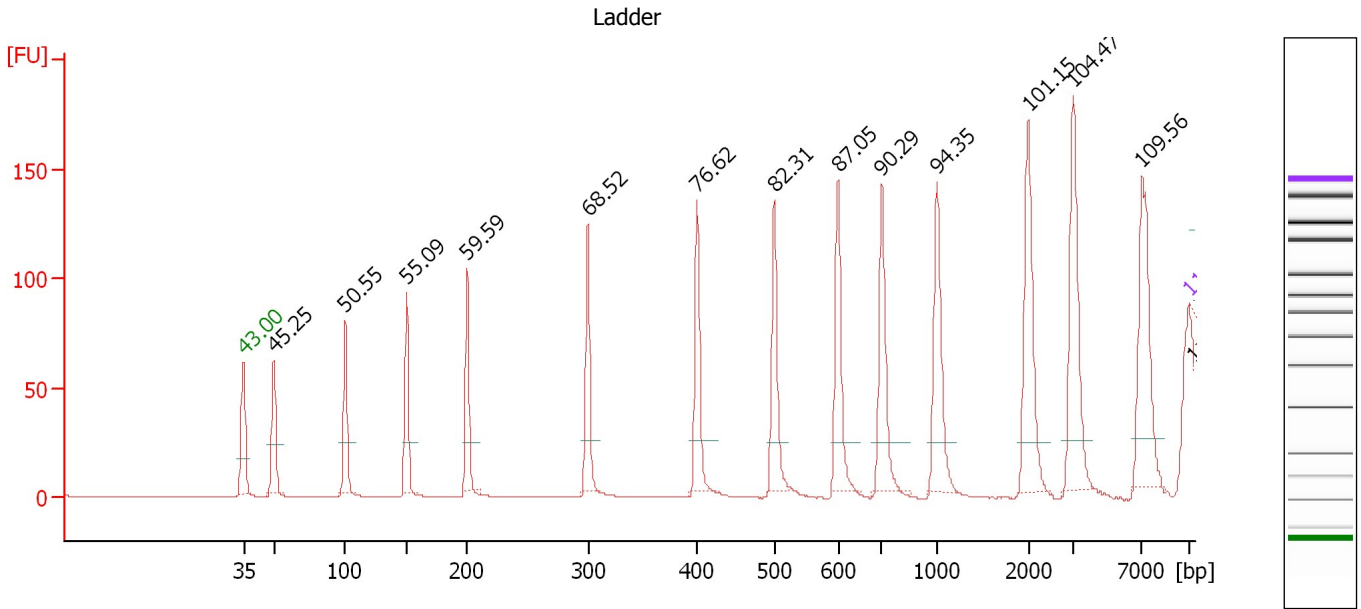
**Ladder**

Ladder Peak	Size	Area
1	35	160
2	50	210
3	100	208
4	150	221
5	200	242
6	300	270
7	400	305
8	500	306
9	600	336
10	700	321
11	1000	366
12	2000	413
13	3000	411
14	7000	400
15	10380	214

Assay Class: High Sensitivity DNA Assay  
 Data Path: C:\...ents and Settings\Bioanalyzer\2014-02-19\2014-02-19\_004.xad

Created: 2/19/2014 12:35:04 PM  
 Modified: 2/19/2014 2:06:03 PM

**Electropherogram Summary**



**Overall Results for Ladder**

Noise: 0.2

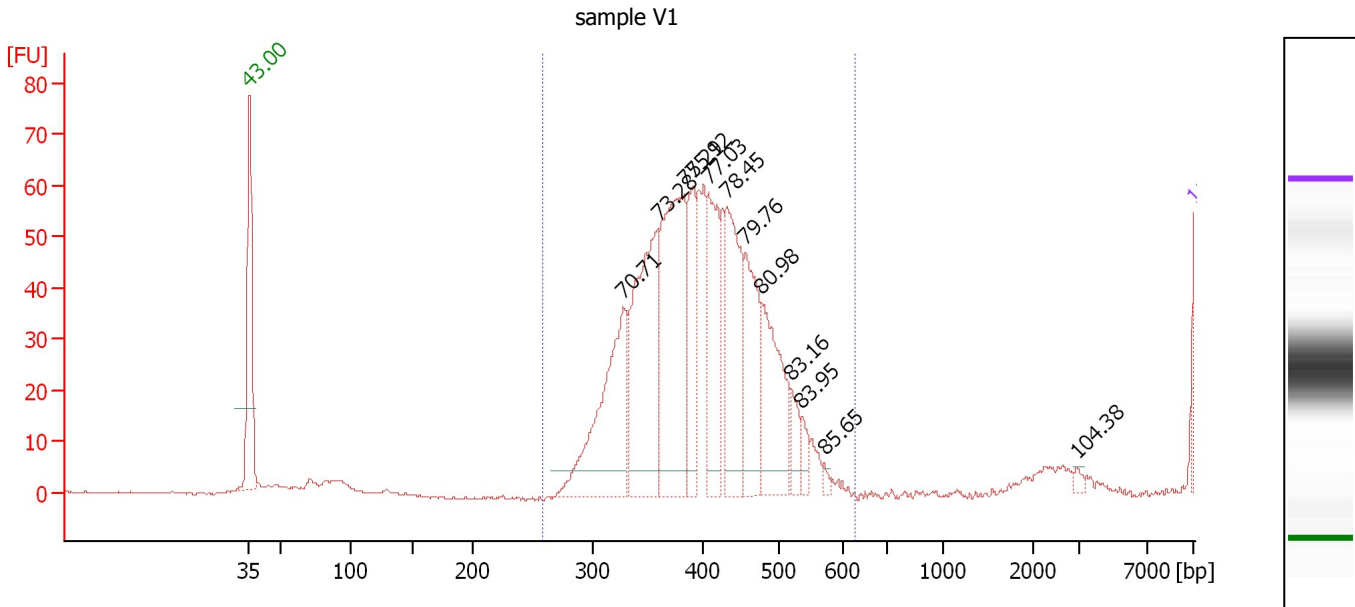
**Peak table for Ladder**

Peak	Aligned Migration Time [s]	Size [bp]	Conc. [pg/μl]	Molarity [pmol/l]	Observations
1	43.00	35	125.00	5,411.3	Lower Marker
2	45.25	50	150.00	4,545.5	Ladder Peak
3	50.55	100	150.00	2,272.7	Ladder Peak
4	55.09	150	150.00	1,515.2	Ladder Peak
5	59.59	200	150.00	1,136.4	Ladder Peak
6	68.52	300	150.00	757.6	Ladder Peak
7	76.62	400	150.00	568.2	Ladder Peak
8	82.31	500	150.00	454.5	Ladder Peak
9	87.05	600	150.00	378.8	Ladder Peak
10	90.29	700	150.00	324.7	Ladder Peak
11	94.35	1,000	150.00	227.3	Ladder Peak
12	101.15	2,000	150.00	113.6	Ladder Peak
13	104.47	3,000	150.00	75.8	Ladder Peak
14	109.56	7,000	150.00	32.5	Ladder Peak
15	113.00	10,380	75.00	10.9	Upper Marker
16	113.43	10,807	0.00	0.0	

Assay Class: High Sensitivity DNA Assay  
 Data Path: C:\...ents and Settings\Bioanalyzer\2014-02-19\2014-02-19\_004.xad

Created: 2/19/2014 12:35:04 PM  
 Modified: 2/19/2014 2:06:03 PM

**Electropherogram Summary Continued ...**



**Overall Results for sample 1 : sample V1**

Number of peaks found: 12      Corr. Area 1: 974.9  
 Noise: 0.1

**Peak table for sample 1 : sample V1**

Peak	Aligned Migration Time [s]	Size [bp]	Conc. [pg/μl]	Molarity [pmol/l]	Observations
1	43.00	35	125.00	5,411.3	Lower Marker
2	70.71	327	3,063.17	14,192.2	
3	73.28	359	3,441.80	14,536.3	
4	75.21	383	3,731.48	14,774.7	
5	75.92	391	1,254.48	4,855.6	
6	77.03	407	1,659.46	6,173.4	
7	78.45	432	2,171.70	7,611.6	
8	79.76	455	1,657.30	5,516.1	
9	80.98	477	1,809.44	5,750.4	
10	83.16	518	386.93	1,131.8	
11	83.95	535	240.99	683.0	
12	85.65	571	84.55	224.5	
13	104.38	2,975	53.86	27.4	
14	113.00	10,380	75.00	10.9	Upper Marker

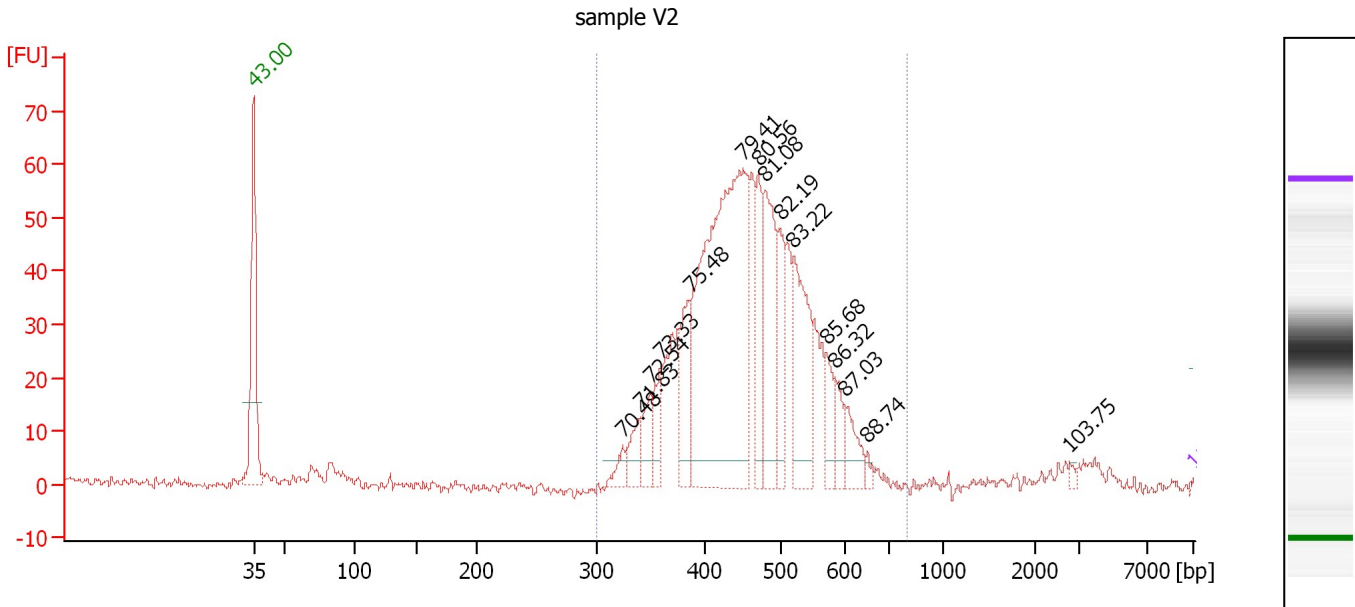
**Region table for sample 1 : sample V1**

From [bp]	To [bp]	Average Size [bp]	Molarity [pmol/l]	Conc. [pg/μl]	Co Corr. lor Area	% of Total	Size distribution in CV [%]
258	625	404	87,033.8	22,468.88	974.9	97	15.7

Assay Class: High Sensitivity DNA Assay  
 Data Path: C:\...ents and Settings\Bioanalyzer\2014-02-19\2014-02-19\_004.xad

Created: 2/19/2014 12:35:04 PM  
 Modified: 2/19/2014 2:06:03 PM

**Electropherogram Summary Continued ...**



**Overall Results for sample 2 : sample V2**

Number of peaks found: 15      Corr. Area 1: 807.9  
 Noise: 0.9

**Peak table for sample 2 : sample V2**

Peak	Aligned Migration Time [s]	Size [bp]	Conc. [pg/μl]	Molarity [pmol/l]	Observations
1	43.00	35	125.00	5,411.3	Lower Marker
2	70.48	324	3,145.81	14,703.7	
3	71.83	341	5,992.69	26,640.2	
4	72.54	350	6,899.36	29,896.6	
5	73.33	359	6,778.95	28,573.5	
6	75.48	386	11,846.35	46,507.3	
7	79.41	449	97,846.92	330,122.4	
8	80.56	469	12,714.07	41,045.5	
9	81.08	478	24,371.91	77,188.8	
10	82.19	498	12,763.61	38,837.3	
11	83.22	519	23,296.28	67,969.8	
12	85.68	571	6,207.30	16,464.2	
13	86.32	585	4,524.59	11,725.9	
14	87.03	600	5,836.63	14,745.9	
15	88.74	652	1,094.00	2,541.2	
16	103.75	2,783	623.07	339.2	
17	113.00	10,380	75.00	10.9	Upper Marker

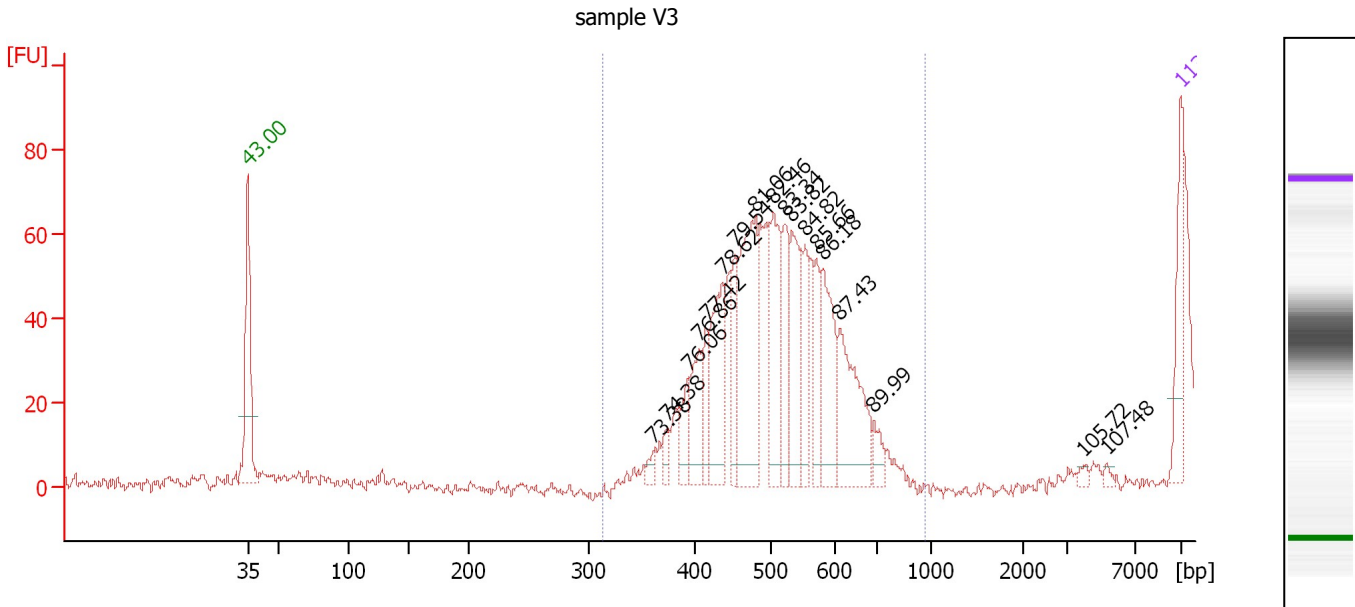
**Region table for sample 2 : sample V2**

From [bp]	To [bp]	Average Size [bp]	Molarity [pmol/l]	Conc. [pg/μl]	Co Corr. lor Area	% of Total	Size distribution in CV [%]
301	796	459	915,174.4	268,856.84	807.9	96	15.5

Assay Class: High Sensitivity DNA Assay  
 Data Path: C:\...ents and Settings\Bioanalyzer\2014-02-19\2014-02-19\_004.xad

Created: 2/19/2014 12:35:04 PM  
 Modified: 2/19/2014 2:06:03 PM

**Electropherogram Summary Continued ...**



**Overall Results for sample 3 : sample V3**

Number of peaks found: 18      Corr. Area 1: 168.4  
 Noise: 1.6

**Peak table for sample 3 : sample V3**

Peak	Aligned Migration Time [s]	Size [bp]	Conc. [pg/μl]	Molarity [pmol/l]	Observations
1	43.00	35	125.00	5,411.3	Lower Marker
2	73.38	360	19.17	80.7	
3	74.38	372	25.44	103.5	
4	76.06	393	57.70	222.4	
5	76.86	404	96.17	360.4	
6	77.42	414	61.71	225.8	
7	78.62	435	173.85	605.2	
8	79.54	451	90.79	304.8	
9	81.06	478	297.84	943.8	
10	82.46	503	172.85	520.3	
11	83.34	522	118.78	344.9	
12	83.82	532	160.62	457.4	
13	84.82	553	84.21	230.7	
14	85.66	571	77.45	205.6	
15	86.18	582	159.95	416.5	
16	87.43	612	186.43	461.8	
17	89.99	691	32.04	70.3	
18	105.72	3,980	7.60	2.9	
19	107.48	5,362	6.33	1.8	
20	113.00	10,380	75.00	10.9	Upper Marker

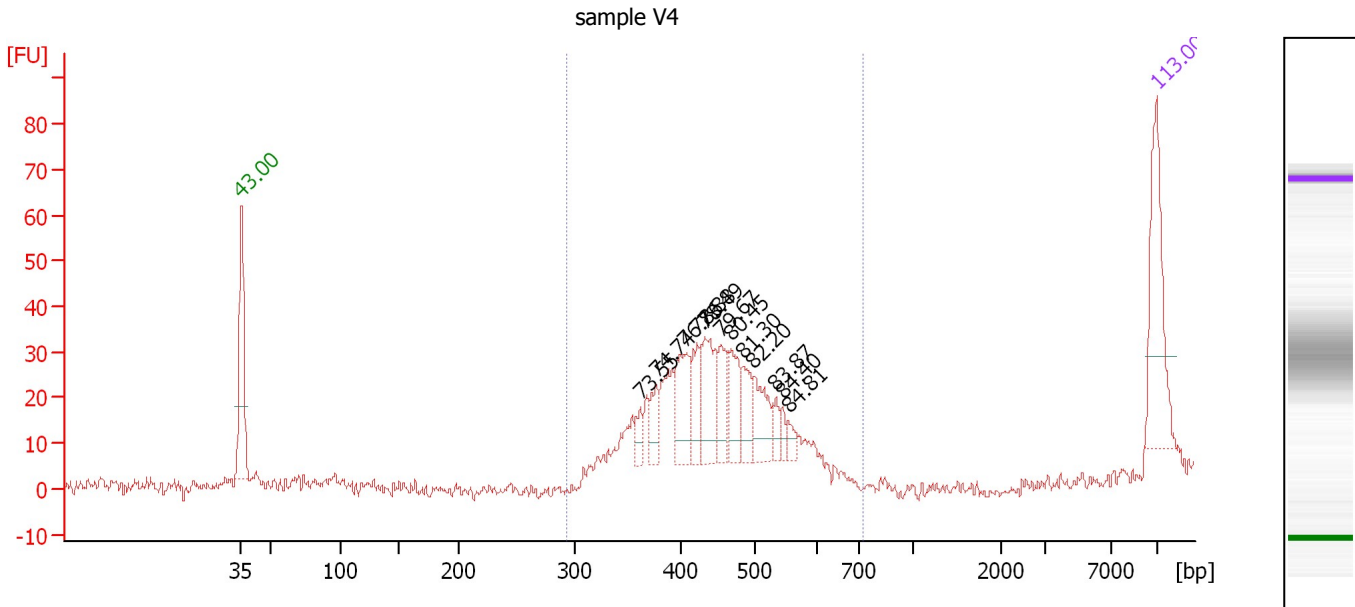
**Region table for sample 3 : sample V3**

From [bp]	To [bp]	Average Size [bp]	Molarity [pmol/l]	Conc. [pg/μl]	Co Corr. lor Area	% of Total	Size distribution in CV [%]
314	958	499	1,258.9	412.04	168.4	97	8.0

Assay Class: High Sensitivity DNA Assay  
 Data Path: C:\...ents and Settings\Bioanalyzer\2014-02-19\2014-02-19\_004.xad

Created: 2/19/2014 12:35:04 PM  
 Modified: 2/19/2014 2:06:03 PM

**Electropherogram Summary Continued ...**



**Overall Results for sample 4 : sample V4**

Number of peaks found: 12                      Corr. Area 1: 410.5  
 Noise: 1.4

**Peak table for sample 4 : sample V4**

Peak	Aligned Migration Time [s]	Size [bp]	Conc. [pg/μl]	Molarity [pmol/l]	Observations
1	43.00	35	125.00	5,411.3	Lower Marker
2	73.55	362	13.60	56.9	
3	74.74	377	24.20	97.3	
4	76.86	404	55.21	206.9	
5	77.88	422	36.66	131.6	
6	78.49	433	58.66	205.3	
7	79.67	454	36.36	121.4	
8	80.45	467	42.12	136.6	
9	81.30	482	31.16	97.9	
10	82.20	498	41.28	125.6	
11	83.87	533	12.23	34.8	
12	84.40	544	9.23	25.7	
13	84.81	553	8.88	24.3	
14	113.00	10,380	75.00	10.9	Upper Marker

**Region table for sample 4 : sample V4**

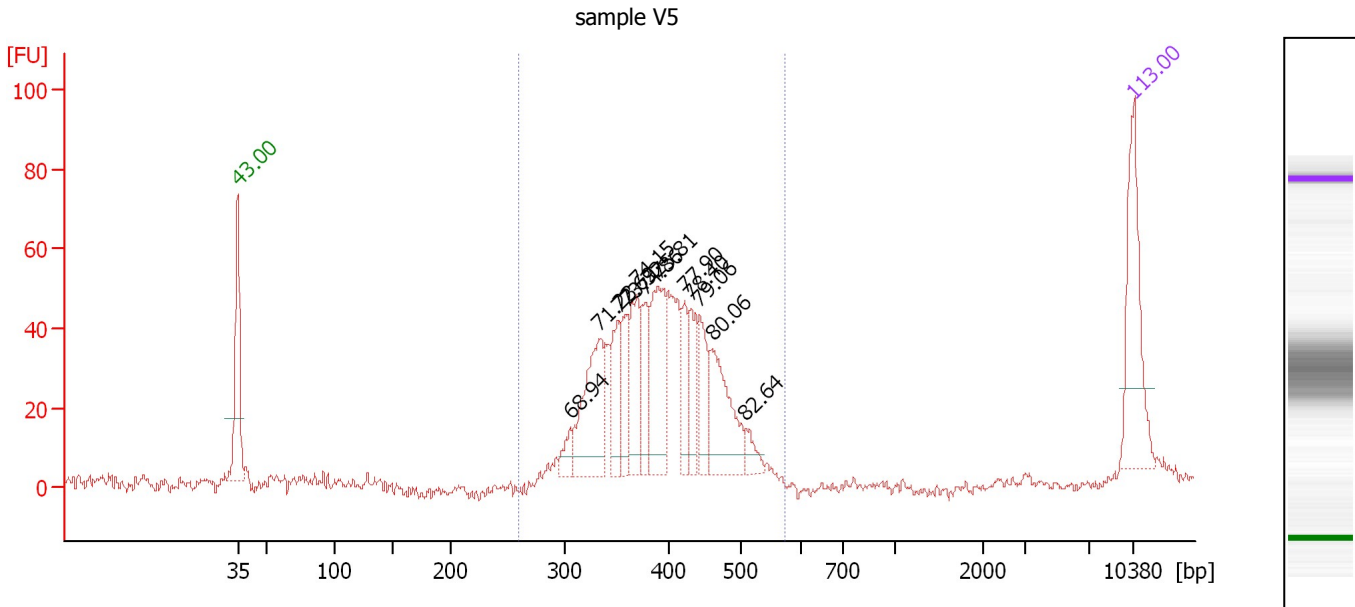
From [bp]	To [bp]	Average Size [bp]	Molarity [pmol/l]	Conc. [pg/μl]	Co Corr. lor Area	% of Total	Size distribution in CV [%]
293	724	443	2,067.0	587.66	410.5	84	15.1



Assay Class: High Sensitivity DNA Assay  
 Data Path: C:\...ents and Settings\Bioanalyzer\2014-02-19\2014-02-19\_004.xad

Created: 2/19/2014 12:35:04 PM  
 Modified: 2/19/2014 2:06:03 PM

**Electropherogram Summary Continued ...**



**Overall Results for sample 5 : sample V5**

Number of peaks found: 12                      Corr. Area 1: 692.1  
 Noise: 1.6

**Peak table for sample 5 : sample V5**

Peak	Aligned Migration Time [s]	Size [bp]	Conc. [pg/μl]	Molarity [pmol/l]	Observations
1	43.00	35	125.00	5,411.3	Lower Marker
2	68.94	305	17.40	86.4	
3	71.23	334	107.08	486.5	
4	72.69	352	48.81	210.4	
5	73.32	359	41.25	174.0	
6	74.15	370	63.48	260.3	
7	74.86	378	42.58	170.6	
8	75.81	390	94.17	365.8	
9	77.90	422	33.83	121.3	
10	78.40	431	44.50	156.3	
11	79.06	443	43.86	150.0	
12	80.06	461	85.17	280.2	
13	82.64	507	14.96	44.7	
14	113.00	10,380	75.00	10.9	Upper Marker

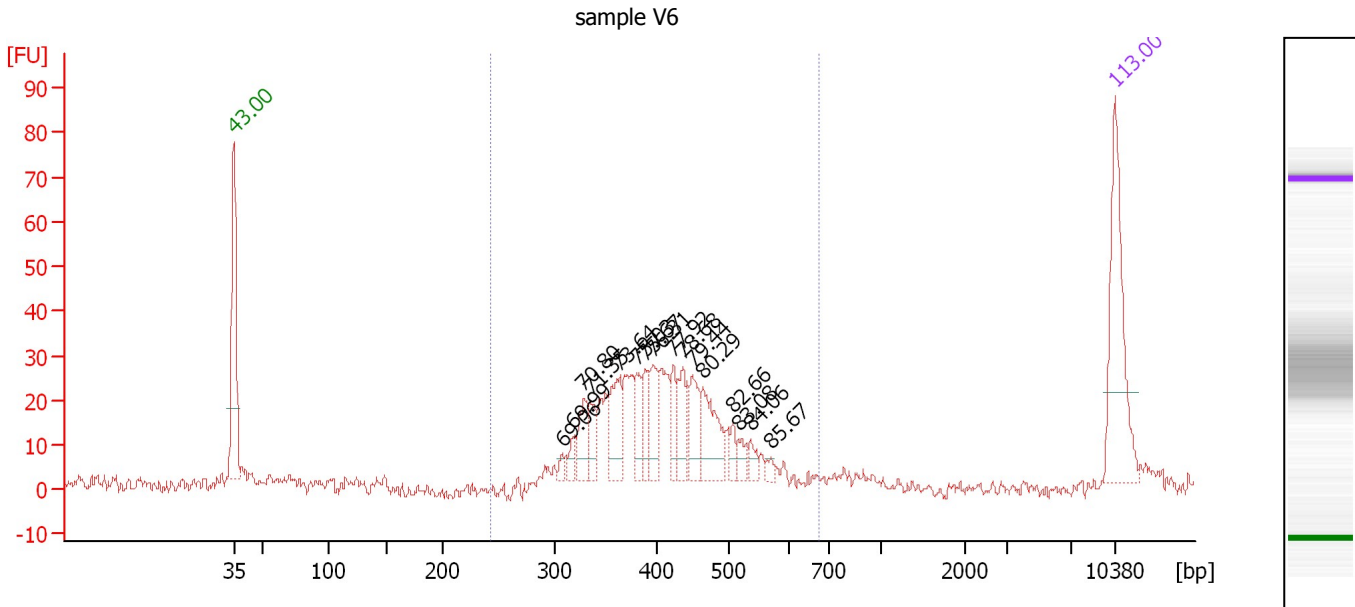
**Region table for sample 5 : sample V5**

From [bp]	To [bp]	Average Size [bp]	Molarity [pmol/l]	Conc. [pg/μl]	Co Corr. lor Area	% of Total	Size distribution in CV [%]
260	572	396	3,114.8	795.76	692.1	97	13.9

Assay Class: High Sensitivity DNA Assay  
 Data Path: C:\...ents and Settings\Bioanalyzer\2014-02-19\2014-02-19\_004.xad

Created: 2/19/2014 12:35:04 PM  
 Modified: 2/19/2014 2:06:03 PM

**Electropherogram Summary Continued ...**



**Overall Results for sample 6 : sample V6**

Number of peaks found: 16                      Corr. Area 1: 381.6  
 Noise: 1.6

**Peak table for sample 6 : sample V6**

Peak	Aligned Migration Time [s]	Size [bp]	Conc. [pg/μl]	Molarity [pmol/l]	Observations
1	43.00	35	125.00	5,411.3	Lower Marker
2	69.06	307	5.08	25.1	
3	69.99	318	9.05	43.1	
4	70.80	328	27.63	127.6	
5	71.35	335	20.48	92.6	
6	73.64	363	43.73	182.5	
7	75.03	380	23.97	95.5	
8	75.67	388	22.56	88.0	
9	76.31	396	31.73	121.3	
10	77.92	423	22.61	81.0	
11	78.68	436	29.92	103.9	
12	79.44	450	33.47	112.8	
13	80.29	465	46.37	151.3	
14	82.66	507	9.79	29.2	
15	83.08	516	10.45	30.7	
16	84.06	537	9.51	26.8	
17	85.67	571	5.00	13.3	
18	113.00	10,380	75.00	10.9	Upper Marker

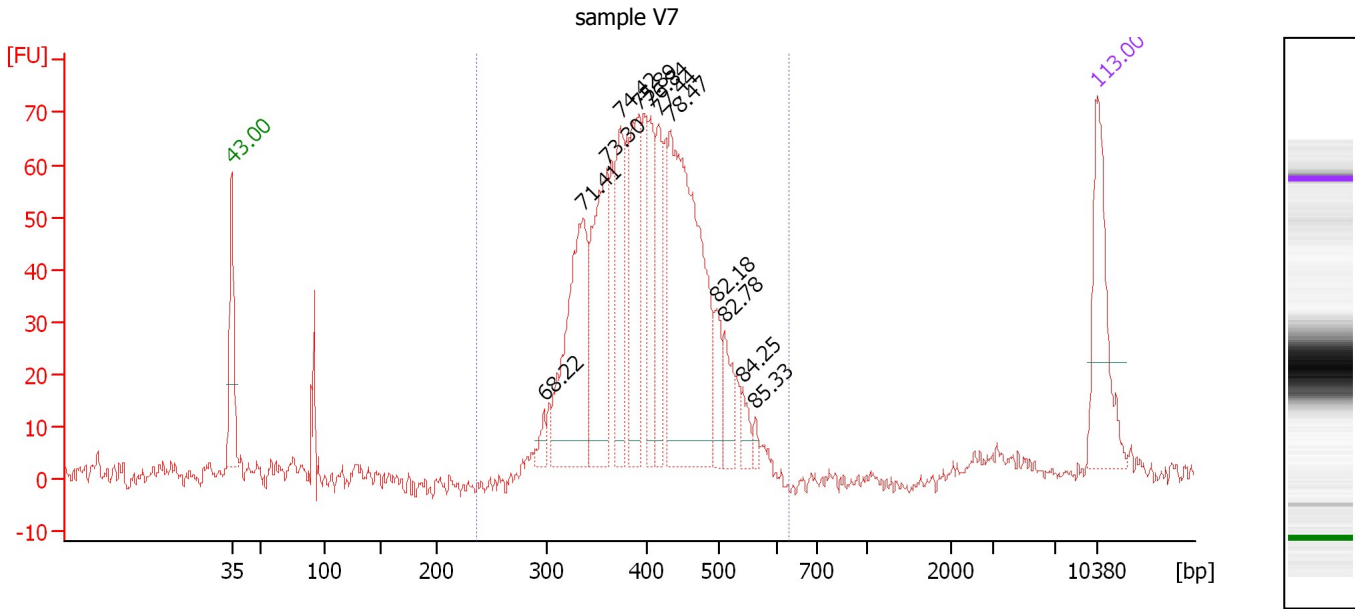
**Region table for sample 6 : sample V6**

From [bp]	To [bp]	Average Size [bp]	Molarity [pmol/l]	Conc. [pg/μl]	Co Corr. lor Area	% of Total	Size distribution in CV [%]
243	674	411	1,796.2	472.60	381.6	95	15.6

Assay Class: High Sensitivity DNA Assay  
 Data Path: C:\...ents and Settings\Bioanalyzer\2014-02-19\2014-02-19\_004.xad

Created: 2/19/2014 12:35:04 PM  
 Modified: 2/19/2014 2:06:03 PM

**Electropherogram Summary Continued ...**



**Overall Results for sample 7 : sample V7**

Number of peaks found: 12                      Corr. Area 1: 1,032.3  
 Noise: 1.8

**Peak table for sample 7 : sample V7**

Peak	Aligned Migration Time [s]	Size [bp]	Conc. [pg/μl]	Molarity [pmol/l]	Observations
1	43.00	35	125.00	5,411.3	Lower Marker
2	68.22	297	13.46	68.8	
3	71.41	336	189.08	853.5	
4	73.30	359	150.49	635.1	
5	74.42	373	87.67	356.2	
6	75.89	391	108.56	420.7	
7	76.84	404	62.51	234.5	
8	77.44	414	74.38	271.9	
9	78.47	433	311.99	1,092.6	
10	82.18	498	34.95	106.4	
11	82.78	510	31.34	93.1	
12	84.25	541	16.36	45.8	
13	85.33	564	6.24	16.8	
14	113.00	10,380	75.00	10.9	Upper Marker

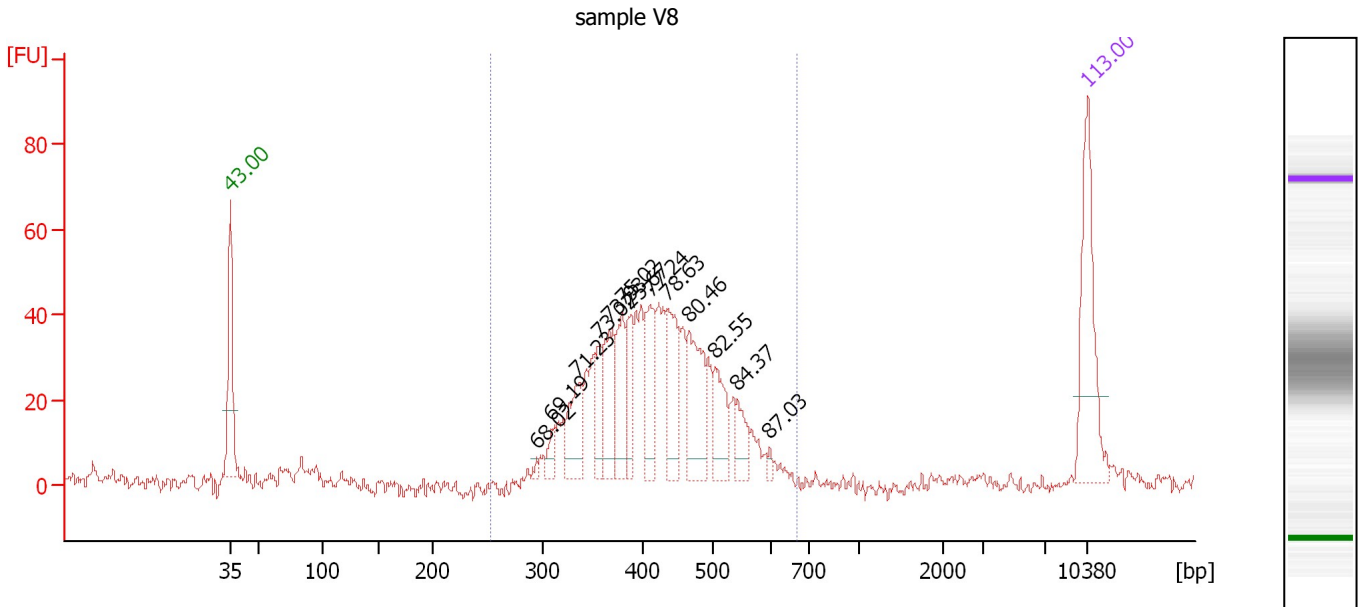
**Region table for sample 7 : sample V7**

From [bp]	To [bp]	Average Size [bp]	Molarity [pmol/l]	Conc. [pg/μl]	Co Corr. lor Area	% of Total	Size distribution in CV [%]
235	628	407	5,187.9	1,353.70	1,032.3	94	15.1

Assay Class: High Sensitivity DNA Assay  
 Data Path: C:\...ents and Settings\Bioanalyzer\2014-02-19\2014-02-19\_004.xad

Created: 2/19/2014 12:35:04 PM  
 Modified: 2/19/2014 2:06:03 PM

**Electropherogram Summary Continued ...**



**Overall Results for sample 8 : sample V8**

Number of peaks found: 13                      Corr. Area 1: 660.0  
 Noise: 1.9

**Peak table for sample 8 : sample V8**

Peak	Aligned Migration Time [s]	Size [bp]	Conc. [pg/μl]	Molarity [pmol/l]	Observations
1	43.00	35	125.00	5,411.3	Lower Marker
2	68.02	294	4.11	21.2	
3	69.19	308	13.70	67.3	
4	71.23	334	48.62	220.9	
5	73.02	356	31.86	135.8	
6	73.93	367	60.23	248.8	
7	75.02	380	48.69	194.0	
8	75.67	388	36.38	142.0	
9	77.24	411	55.68	205.3	
10	78.63	435	62.59	217.8	
11	80.46	468	73.66	238.7	
12	82.55	505	40.39	121.2	
13	84.37	544	22.61	63.0	
14	87.03	600	4.01	10.1	
15	113.00	10,380	75.00	10.9	Upper Marker

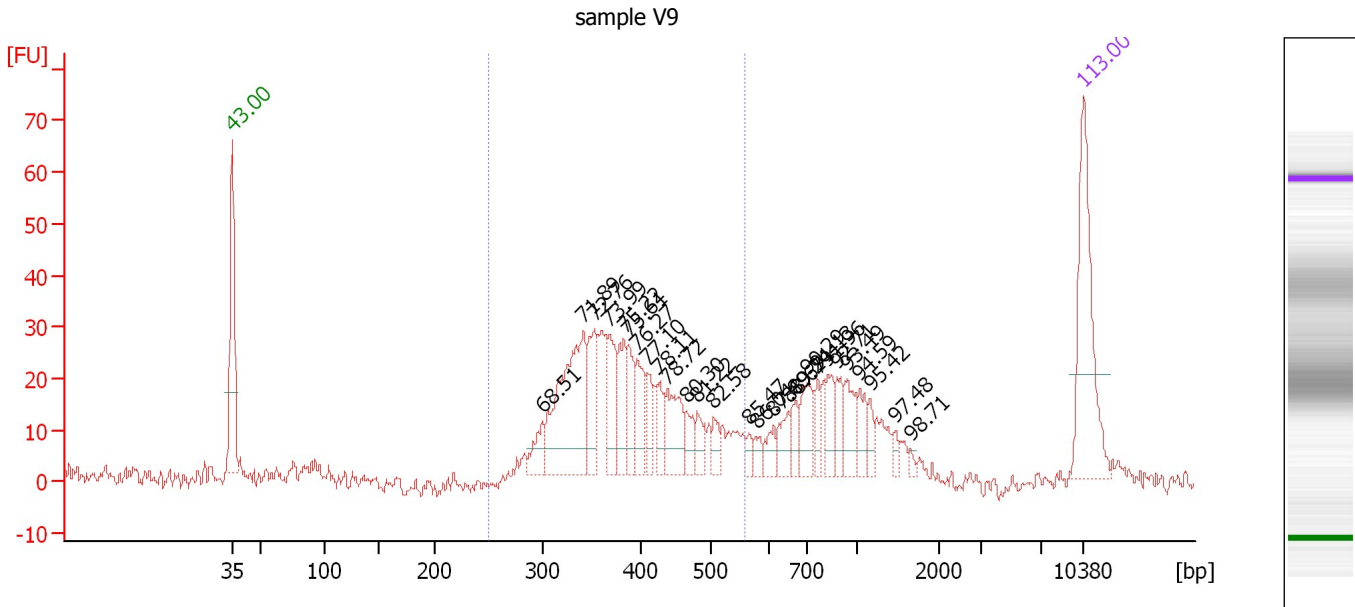
**Region table for sample 8 : sample V8**

From [bp]	To [bp]	Average Size [bp]	Molarity [pmol/l]	Conc. [pg/μl]	Co Corr. lor Area	% of Total	Size distribution in CV [%]
253	668	425	2,865.5	775.19	660.0	94	16.9

Assay Class: High Sensitivity DNA Assay  
 Data Path: C:\...ents and Settings\Bioanalyzer\2014-02-19\2014-02-19\_004.xad

Created: 2/19/2014 12:35:04 PM  
 Modified: 2/19/2014 2:06:03 PM

**Electropherogram Summary Continued ...**



**Overall Results for sample 9 : sample V9**

Number of peaks found: 27                      Corr. Area 1: 410.2  
 Noise: 1.5

**Peak table for sample 9 : sample V9**

Peak	Aligned Migration Time [s]	Size [bp]	Conc. [pg/μl]	Molarity [pmol/l]	Observations
1	43.00	35	125.00	5,411.3	Lower Marker
2	68.51	300	20.16	101.8	
3	71.89	342	132.36	587.1	
4	72.76	352	45.05	193.7	
5	73.99	368	41.98	173.1	
6	75.22	383	36.83	145.8	
7	75.61	388	27.41	107.2	
8	76.27	396	30.34	116.2	
9	77.10	409	18.17	67.4	
10	78.11	426	17.50	62.2	
11	78.72	437	40.92	141.9	
12	80.30	465	15.52	50.6	
13	81.22	481	15.06	47.4	
14	82.58	506	11.10	33.3	
15	85.47	567	6.20	16.6	
16	86.04	579	8.04	21.0	
17	87.49	614	12.11	29.9	
18	88.67	650	16.08	37.5	
19	89.24	668	13.81	31.3	
20	90.29	701	27.01	58.4	
21	91.13	762	13.19	26.2	
22	91.96	823	19.14	35.2	
23	92.71	878	16.99	29.3	
24	93.49	937	22.40	36.2	
25	94.59	1,035	14.83	21.7	

Assay Class: High Sensitivity DNA Assay  
Data Path: C:\...ents and Settings\Bioanalyzer\2014-02-19\2014-02-19\_004.xad

Created: 2/19/2014 12:35:04 PM  
Modified: 2/19/2014 2:06:03 PM

**Electropherogram Summary Continued ...****... Peak table for sample 9 : sample V9**

Peak	Aligned Migration Time [s]	Size [bp]	Conc. [pg/ $\mu$ l]	Molarity [pmol/l]	Observations
26	95.42	1,157	8.36	10.9	
27	97.48	1,461	5.20	5.4	
28	98.71	1,641	2.72	2.5	
29	▶ 113.00	10,380	75.00	10.9	Upper Marker

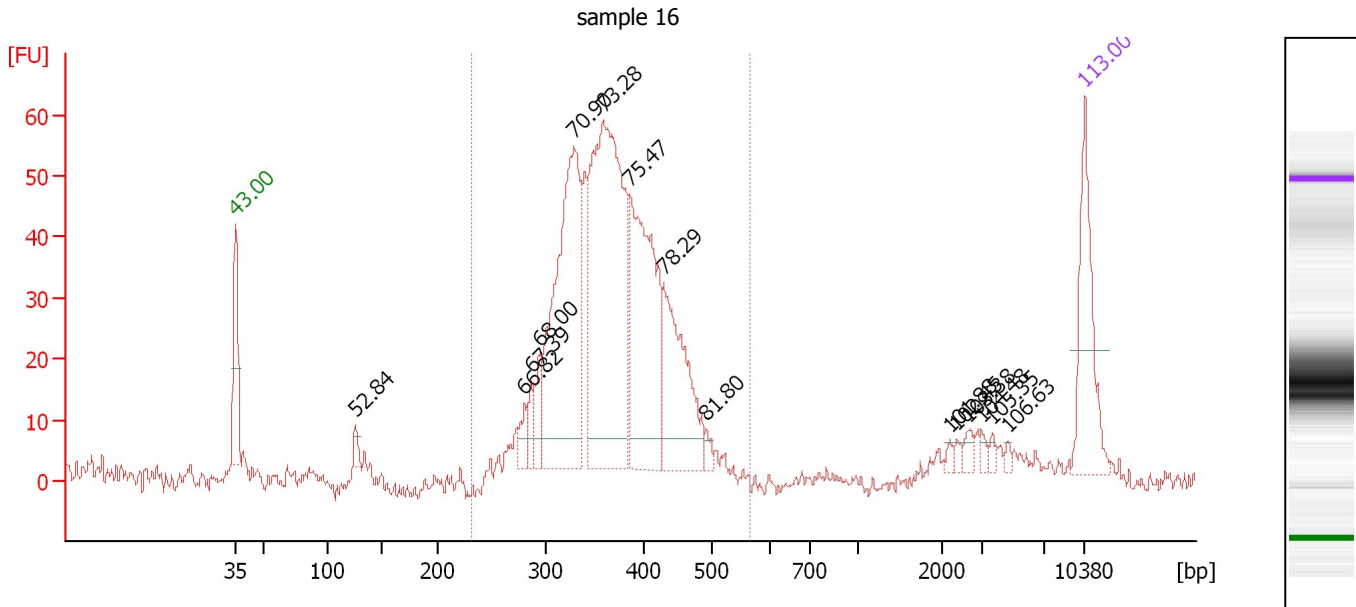
**Region table for sample 9 : sample V9**

From [bp]	To [bp]	Average Size [bp]	Molarity [pmol/l]	Conc. [pg/ $\mu$ l]	Co Corr. for Area	% of Total	Size distribution in CV [%]
250	560	391	2,208.2	550.69	■ 410.2	65	16.6

Assay Class: High Sensitivity DNA Assay  
 Data Path: C:\...ents and Settings\Bioanalyzer\2014-02-19\2014-02-19\_004.xad

Created: 2/19/2014 12:35:04 PM  
 Modified: 2/19/2014 2:06:03 PM

**Electropherogram Summary Continued ...**



**Overall Results for sample 10 : sample 16**

Number of peaks found: 15                      Corr. Area 1: 744.2  
 Noise: 1.3

**Peak table for sample 10 : sample 16**

Peak	Aligned Migration Time [s]	Size [bp]	Conc. [pg/μl]	Molarity [pmol/l]	Observations
1	43.00	35	125.00	5,411.3	Lower Marker
2	52.84	125	11.48	138.8	
3	66.82	281	19.50	105.2	
4	67.39	287	20.66	108.9	
5	68.00	294	29.05	149.6	
6	70.90	329	317.64	1,460.9	
7	73.28	359	420.66	1,776.7	
8	75.47	386	235.87	926.1	
9	78.29	429	143.75	507.3	
10	81.80	491	7.95	24.5	
11	101.88	2,221	3.81	2.6	
12	102.45	2,393	3.90	2.5	
13	103.38	2,671	7.31	4.1	
14	104.48	3,006	3.89	2.0	
15	105.35	3,696	4.01	1.6	
16	106.63	4,696	3.35	1.1	
17	113.00	10,380	75.00	10.9	Upper Marker

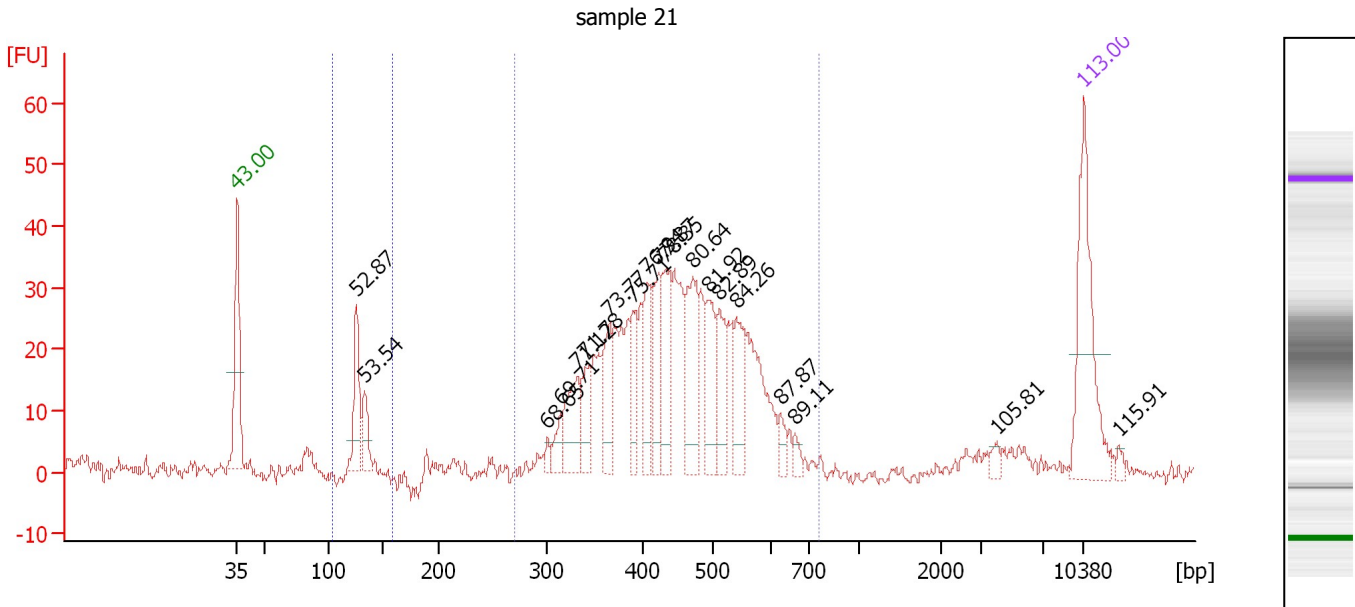
**Region table for sample 10 : sample 16**

From [bp]	To [bp]	Average Size [bp]	Molarity [pmol/l]	Conc. [pg/μl]	Co Corr. for Area	% of Total	Size distribution in CV [%]
231	564	369	5,477.9	1,303.17	744.2	92	13.7

Assay Class: High Sensitivity DNA Assay  
 Data Path: C:\...ents and Settings\Bioanalyzer\2014-02-19\2014-02-19\_004.xad

Created: 2/19/2014 12:35:04 PM  
 Modified: 2/19/2014 2:06:03 PM

**Electropherogram Summary Continued ...**



**Overall Results for sample 11 : sample 21**

Number of peaks found: 19      Corr. Area 1: 565.9  
 Noise: 1.0      Corr. Area 2: 39.3

**Peak table for sample 11 : sample 21**

Peak	Aligned Migration Time [s]	Size [bp]	Conc. [pg/μl]	Molarity [pmol/l]	Observations
1	43.00	35	125.00	5,411.3	Lower Marker
2	52.87	126	53.74	648.1	
3	53.54	133	26.51	302.2	
4	68.65	302	6.12	30.8	
5	69.71	315	15.38	74.1	
6	71.12	332	49.00	223.5	
7	71.78	340	29.80	132.7	
8	73.77	365	41.35	171.7	
9	75.71	389	32.24	125.7	
10	76.94	406	38.59	144.1	
11	77.87	422	48.27	173.3	
12	78.35	431	52.59	185.1	
13	80.64	471	65.05	209.3	
14	81.92	493	46.52	142.9	
15	82.89	512	40.27	119.1	
16	84.26	541	40.37	113.0	
17	87.87	626	10.13	24.5	
18	89.11	664	6.67	15.2	
19	105.81	4,058	5.09	1.9	
20	113.00	10,380	75.00	10.9	Upper Marker
21	115.91	13,241	0.00	0.0	

**Region table for sample 11 : sample 21**

From [bp]	To [bp]	Average Size [bp]	Molarity [pmol/l]	Conc. [pg/μl]	Co Corr. lor Area	% of Total	Size distribution in CV [%]
104	159	129	974.7	82.83	39.3	6	3.9




Assay Class: High Sensitivity DNA Assay  
Data Path: C:\...ents and Settings\Bioanalyzer\2014-02-19\2014-02-19\_004.xad

Created: 2/19/2014 12:35:04 PM  
Modified: 2/19/2014 2:06:03 PM

**Electropherogram Summary Continued ...**

... Region table for sample 11 : sample 21

From [bp]	To [bp]	Average Size [bp]	Molarity [pmol/l]	Conc. [pg/ $\mu$ l]	Co Corr. lor Area	% of Total	Size distribution in CV [%]
272	756	452	2,982.3	847.19	 565.9	85	19.0

Assay Class: High Sensitivity DNA Assay  
Data Path: C:\...ents and Settings\Bioanalyzer\2014-02-19\2014-02-19\_004.xad

Created: 2/19/2014 12:35:04 PM  
Modified: 2/19/2014 2:06:03 PM

**Gel Image**

