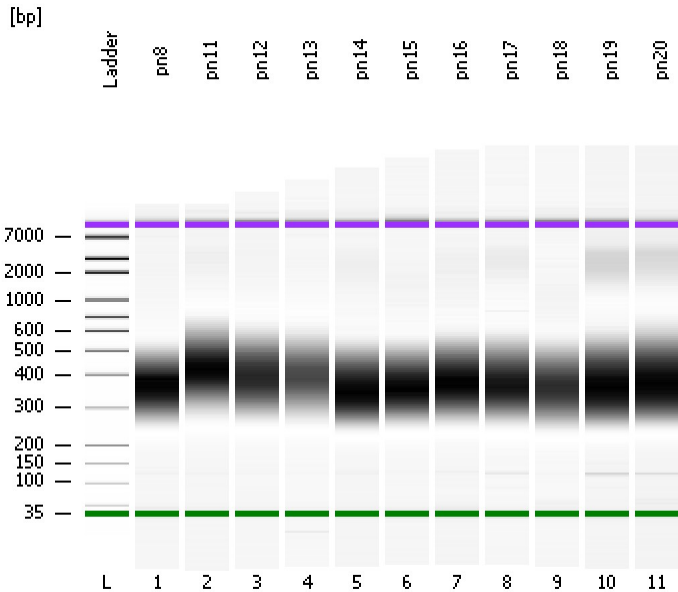


Assay Class: High Sensitivity DNA Assay
Data Path: C:\...ents and Settings\Bioanalyzer\2014-02-19\2014-02-19_007.xad

Created: 2/19/2014 2:52:52 PM
Modified: 2/19/2014 3:51:24 PM

Electrophoresis File Run Summary



Instrument Information:

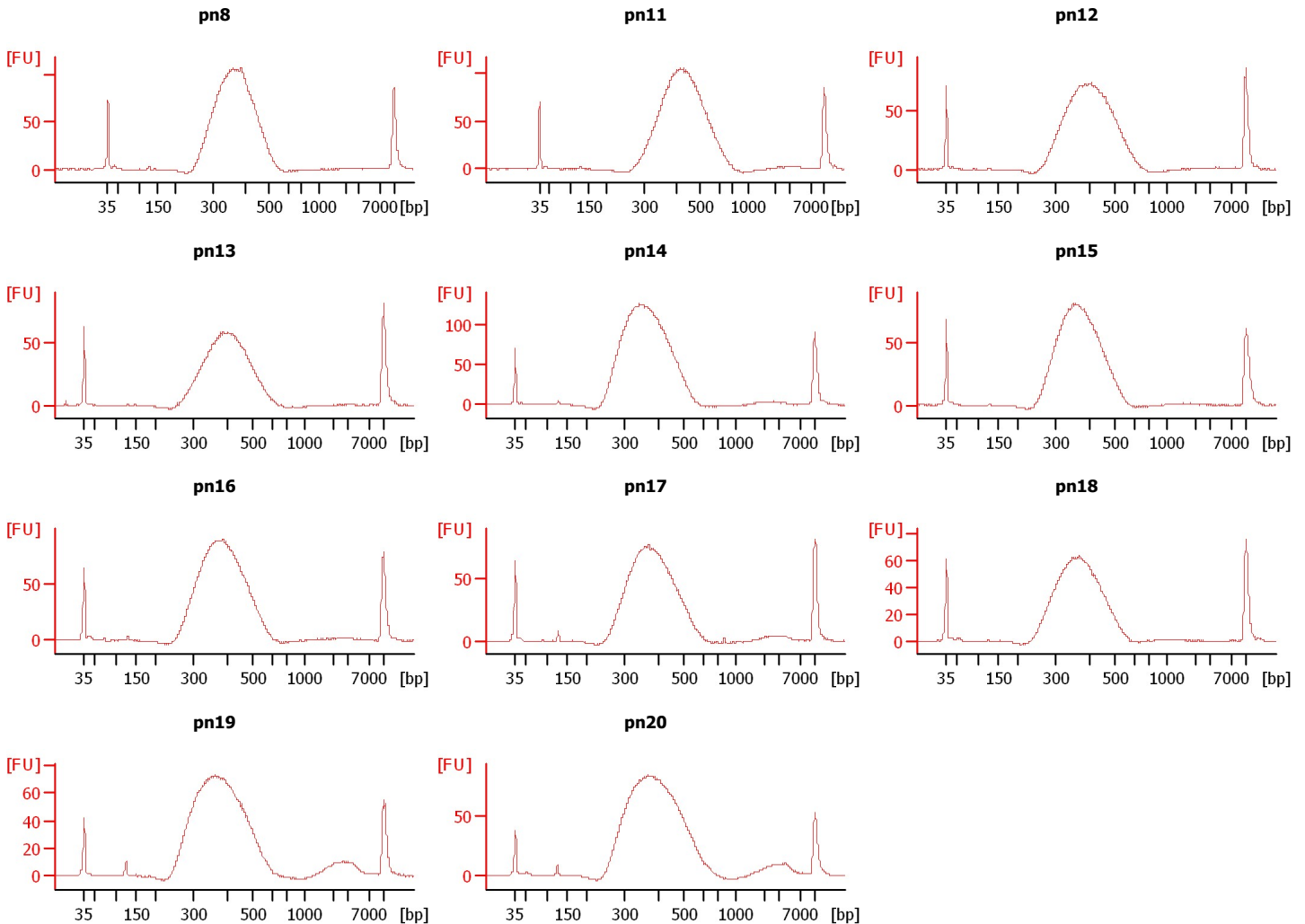
Instrument Name: DE13701086 Firmware: C.01.069
Serial#: DE13701086 Type: G2938B

Assay Information:

Assay Origin Path: C:\Program Files\Agilent\2100 bioanalyzer\2100 expert\assays\dsDNA\High Sensitivity DNA.xsy
Assay Class: High Sensitivity DNA Assay
Version: 1.03
Assay Comments: Copyright © 2003-2010 Agilent Technologies

Chip Information:

Chip Lot #:
Reagent Kit Lot #:
Chip Comments:



Assay Class: High Sensitivity DNA Assay
Data Path: C:\...ents and Settings\Bioanalyzer\2014-02-19\2014-02-19_007.xad

Created: 2/19/2014 2:52:52 PM
Modified: 2/19/2014 3:51:24 PM

Electrophoresis File Run Summary (Chip Summary)

Sample Name	Sample Comment	Rest. Digest	Status	Observation	Result Label	Result Color
pn8		<input type="checkbox"/>	✓			
pn11		<input type="checkbox"/>	✓			
pn12		<input type="checkbox"/>	✓			
pn13		<input type="checkbox"/>	✓			
pn14		<input type="checkbox"/>	✓			
pn15		<input type="checkbox"/>	✓			
pn16		<input type="checkbox"/>	✓			
pn17		<input type="checkbox"/>	✓			
pn18		<input type="checkbox"/>	✓			
pn19		<input type="checkbox"/>	✓			
pn20		<input type="checkbox"/>	✓			
Ladder		<input type="checkbox"/>	✓			

Chip Lot #

Reagent Kit Lot #

Chip Comments :

Assay Class: High Sensitivity DNA Assay
Data Path: C:\...ents and Settings\Bioanalyzer\2014-02-19\2014-02-19_007.xad

Created: 2/19/2014 2:52:52 PM
Modified: 2/19/2014 3:51:24 PM

Electrophoresis Assay Details

General Analysis Settings

Number of Available Sample and Ladder Wells (Max.) : 12
Minimum Visible Range [s] : 32
Maximum Visible Range [s] : 138
Start Analysis Time Range [s] : 33
End Analysis Time Range [s] : 137.5
Ladder Concentration [pg/μl] : 1950
Uses Standard Area for Ladder Fragments
Lower Marker Concentration [pg/μl] : 125
Upper Marker Concentration [pg/μl] : 75
Used Upper Marker for Quantitation
Standard Curve Fit is Point to Point
Show Data Aligned to Lower and Upper Marker

Integrator Settings

Integration Start Time [s] : 33.05
Integration End Time [s] : 137
Slope Threshold : 0.8
Height Threshold [FU] : 5
Area Threshold : 0.1
Width Threshold [s] : 0.6
Baseline Plateau [s] : 0.5

Filter Settings

Filter Width [s] : 0.5
Polynomial Order : 4

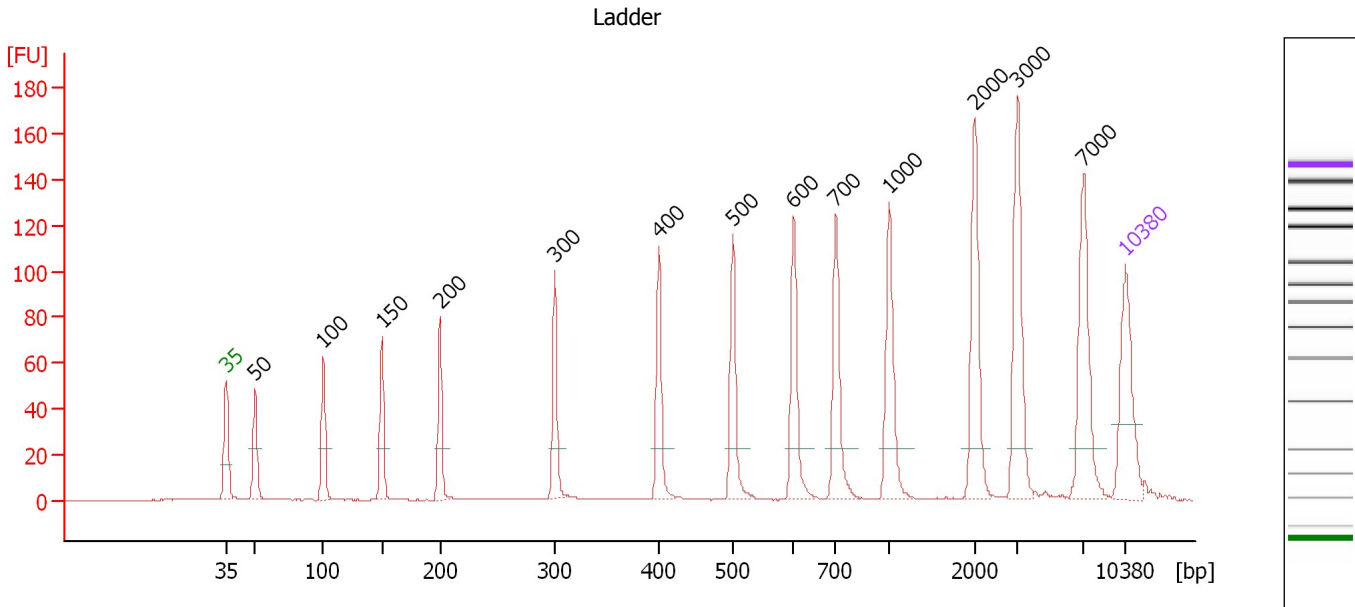
Ladder

Ladder Peak	Size	Area
1	35	160
2	50	210
3	100	208
4	150	221
5	200	242
6	300	270
7	400	305
8	500	306
9	600	336
10	700	321
11	1000	366
12	2000	413
13	3000	411
14	7000	400
15	10380	214

Assay Class: High Sensitivity DNA Assay
 Data Path: C:\...ents and Settings\Bioanalyzer\2014-02-19\2014-02-19_007.xad

Created: 2/19/2014 2:52:52 PM
 Modified: 2/19/2014 3:51:24 PM

Electropherogram Summary



Overall Results for Ladder

Noise: 0.2

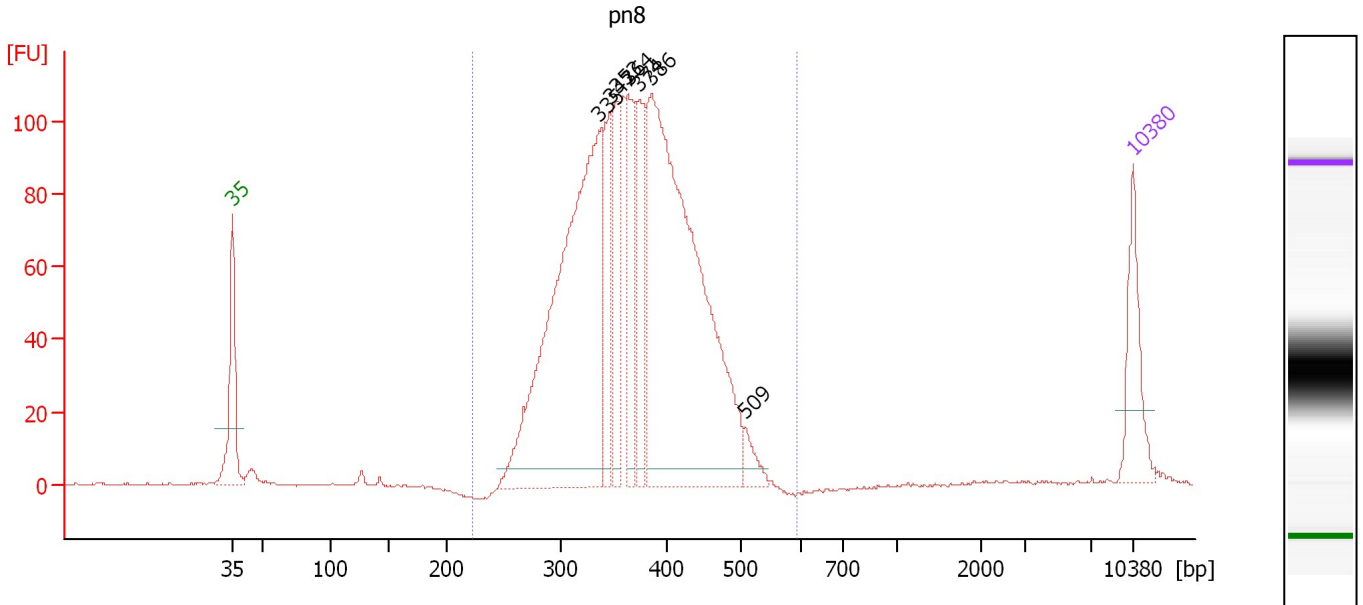
Peak table for Ladder

Peak	Aligned Migration Time [s]	Size [bp]	Conc. [pg/μl]	Molarity [pmol/l]	Observations
1	43.00	35	125.00	5,411.3	Lower Marker
2	45.28	50	150.00	4,545.5	Ladder Peak
3	50.59	100	150.00	2,272.7	Ladder Peak
4	55.16	150	150.00	1,515.2	Ladder Peak
5	59.64	200	150.00	1,136.4	Ladder Peak
6	68.60	300	150.00	757.6	Ladder Peak
7	76.69	400	150.00	568.2	Ladder Peak
8	82.46	500	150.00	454.5	Ladder Peak
9	87.19	600	150.00	378.8	Ladder Peak
10	90.47	700	150.00	324.7	Ladder Peak
11	94.62	1,000	150.00	227.3	Ladder Peak
12	101.26	2,000	150.00	113.6	Ladder Peak
13	104.58	3,000	150.00	75.8	Ladder Peak
14	109.76	7,000	150.00	32.5	Ladder Peak
15	113.00	10,380	75.00	10.9	Upper Marker

Assay Class: High Sensitivity DNA Assay
 Data Path: C:\...ents and Settings\Bioanalyzer\2014-02-19\2014-02-19_007.xad

Created: 2/19/2014 2:52:52 PM
 Modified: 2/19/2014 3:51:24 PM

Electropherogram Summary Continued ...



Overall Results for sample 1 : pn8

Number of peaks found: 7 Corr. Area 1: 1,760.0
 Noise: 0.2

Peak table for sample 1 : pn8

Peak	Aligned Migration Time [s]	Size [bp]	Conc. [pg/μl]	Molarity [pmol/l]	Observations
1	43.00	35	125.00	5,411.3	Lower Marker
2	71.47	335	821.13	3,708.5	
3	72.43	347	142.08	619.9	
4	72.88	353	137.91	592.1	
5	73.75	364	153.17	638.2	
6	74.58	374	131.62	533.4	
7	75.58	386	893.71	3,506.3	
8	82.87	509	27.72	82.6	
9	113.00	10,380	75.00	10.9	Upper Marker

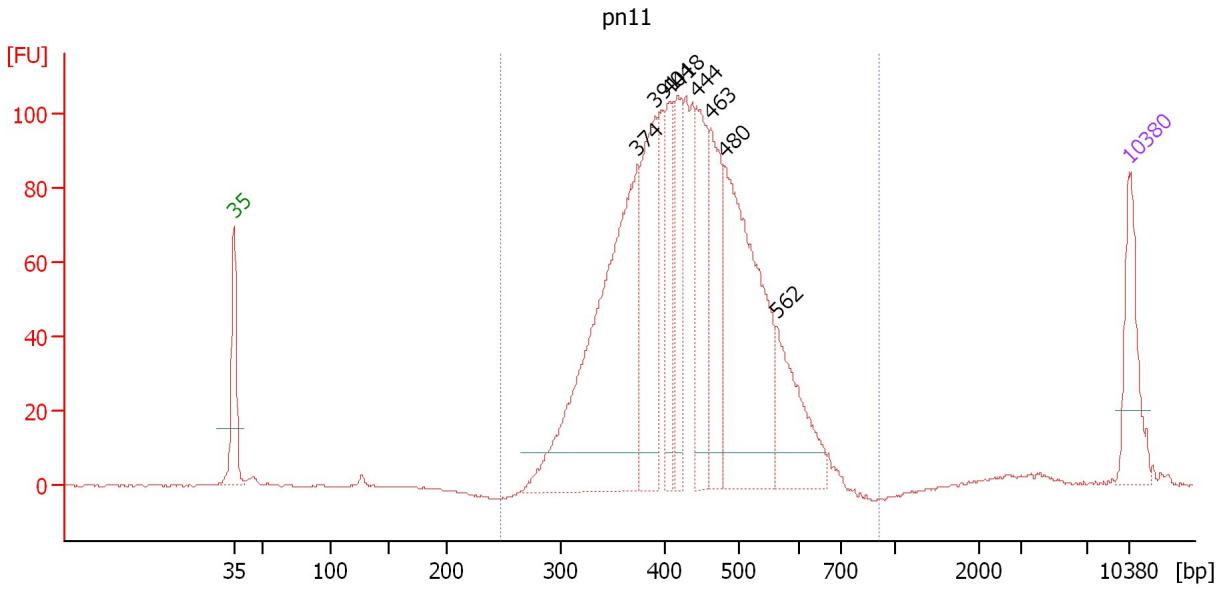
Region table for sample 1 : pn8

From [bp]	To [bp]	Average Size [bp]	Molarity [pmol/l]	Conc. [pg/μl]	Co Corr. lor Area	% of Total	Size distribution in CV [%]
222	592	371	10,122.5	2,401.94	1,760.0	99	15.3

Assay Class: High Sensitivity DNA Assay
 Data Path: C:\...ents and Settings\Bioanalyzer\2014-02-19\2014-02-19_007.xad

Created: 2/19/2014 2:52:52 PM
 Modified: 2/19/2014 3:51:24 PM

Electropherogram Summary Continued ...



Setpoint Deviations for sample 2 : pn11

Height Threshold [FU] : 10

Overall Results for sample 2 : pn11

Number of peaks found: 8 Corr. Area 1: 1,784.6
 Noise: 0.2

Peak table for sample 2 : pn11

Peak	Aligned Migration Time [s]	Size [bp]	Conc. [pg/μl]	Molarity [pmol/l]	Observations
1	43.00	35	125.00	5,411.3	Lower Marker
2	74.56	374	597.78	2,424.0	
3	75.98	391	230.81	894.0	
4	76.94	404	105.14	394.1	
5	77.73	418	126.68	459.2	
6	79.23	444	151.25	516.2	
7	80.31	463	155.25	508.3	
8	81.31	480	409.94	1,293.7	
9	85.40	562	138.15	372.4	
10	113.00	10,380	75.00	10.9	Upper Marker

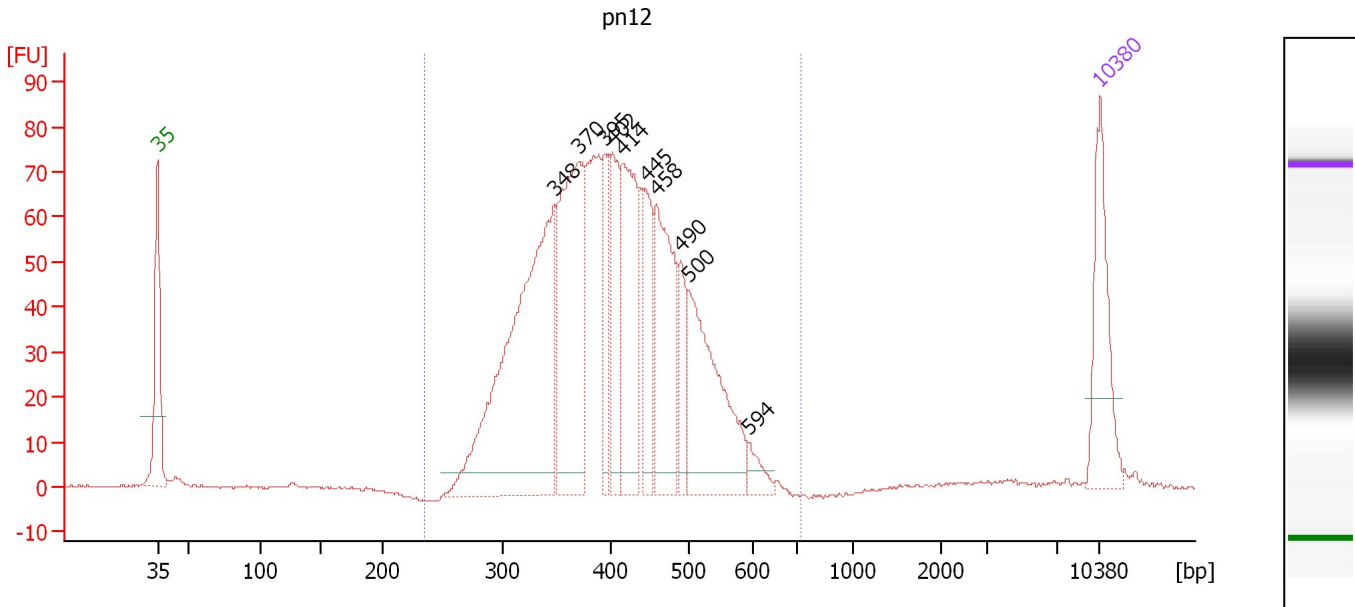
Region table for sample 2 : pn11

From [bp]	To [bp]	Average Size [bp]	Molarity [pmol/l]	Conc. [pg/μl]	Co Corr. lor Area	% of Total	Size distribution in CV [%]
247	912	435	7,873.5	2,167.10	1,784.6	98	18.1

Assay Class: High Sensitivity DNA Assay
 Data Path: C:\...ents and Settings\Bioanalyzer\2014-02-19\2014-02-19_007.xad

Created: 2/19/2014 2:52:52 PM
 Modified: 2/19/2014 3:51:24 PM

Electropherogram Summary Continued ...



Overall Results for sample 3 : pn12

Number of peaks found: 10 Corr. Area 1: 1,366.8
 Noise: 0.3

Peak table for sample 3 : pn12

Peak	Aligned Migration Time [s]	Size [bp]	Conc. [pg/μl]	Molarity [pmol/l]	Observations
1	43.00	35	125.00	5,411.3	Lower Marker
2	72.46	348	428.37	1,866.6	
3	74.26	370	241.50	989.2	
4	76.27	395	65.97	253.2	
5	76.78	402	89.07	336.1	
6	77.51	414	150.30	549.9	
7	79.30	445	76.45	260.1	
8	80.03	458	150.84	499.2	
9	81.87	490	48.62	150.4	
10	82.47	500	175.31	531.1	
11	86.92	594	16.48	42.0	
12	113.00	10,380	75.00	10.9	Upper Marker

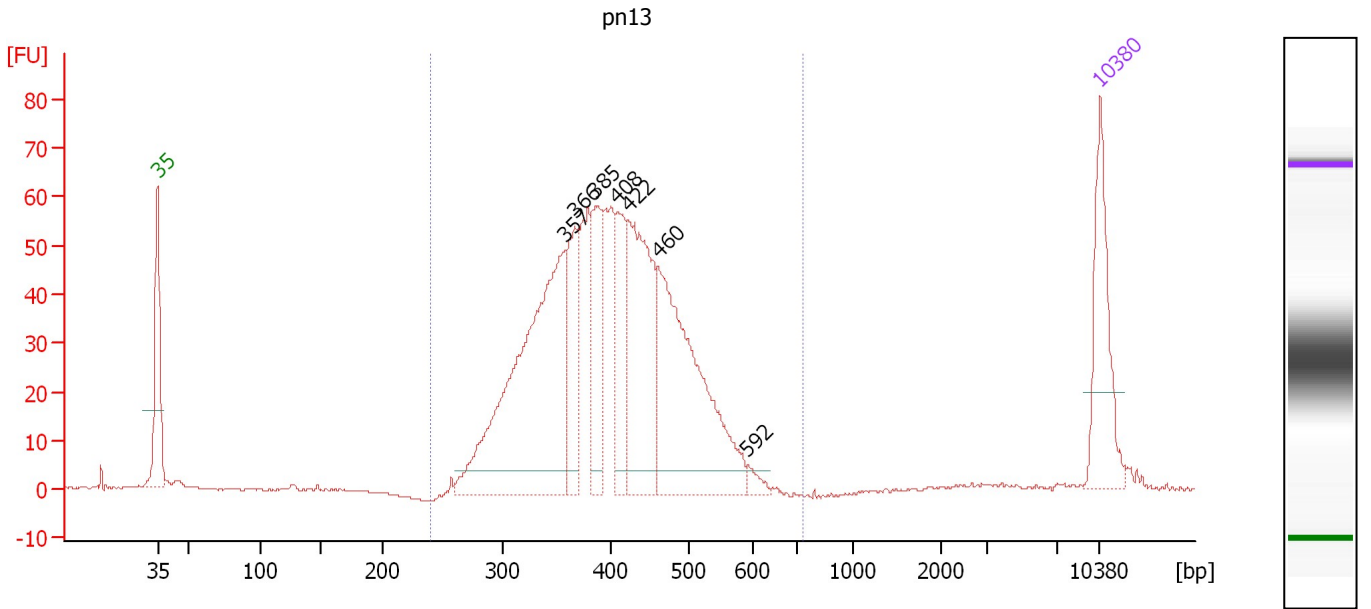
Region table for sample 3 : pn12

From [bp]	To [bp]	Average Size [bp]	Molarity [pmol/l]	Conc. [pg/μl]	Co Corr. lor Area	% of Total	Size distribution in CV [%]
236	721	408	6,273.3	1,618.45	1,366.8	98	18.1

Assay Class: High Sensitivity DNA Assay
 Data Path: C:\...ents and Settings\Bioanalyzer\2014-02-19\2014-02-19_007.xad

Created: 2/19/2014 2:52:52 PM
 Modified: 2/19/2014 3:51:24 PM

Electropherogram Summary Continued ...



Overall Results for sample 4 : pn13

Number of peaks found: 7 Corr. Area 1: 978.1
 Noise: 0.2

Peak table for sample 4 : pn13

Peak	Aligned Migration Time [s]	Size [bp]	Conc. [pg/μl]	Molarity [pmol/l]	Observations
1	43.00	35	125.00	5,411.3	Lower Marker
2	73.22	357	385.68	1,636.5	
3	73.97	366	89.20	368.9	
4	75.51	385	81.01	318.5	
5	77.14	408	80.28	298.3	
6	77.98	422	185.58	665.9	
7	80.18	460	265.64	874.1	
8	86.83	592	8.49	21.7	
9	113.00	10,380	75.00	10.9	Upper Marker

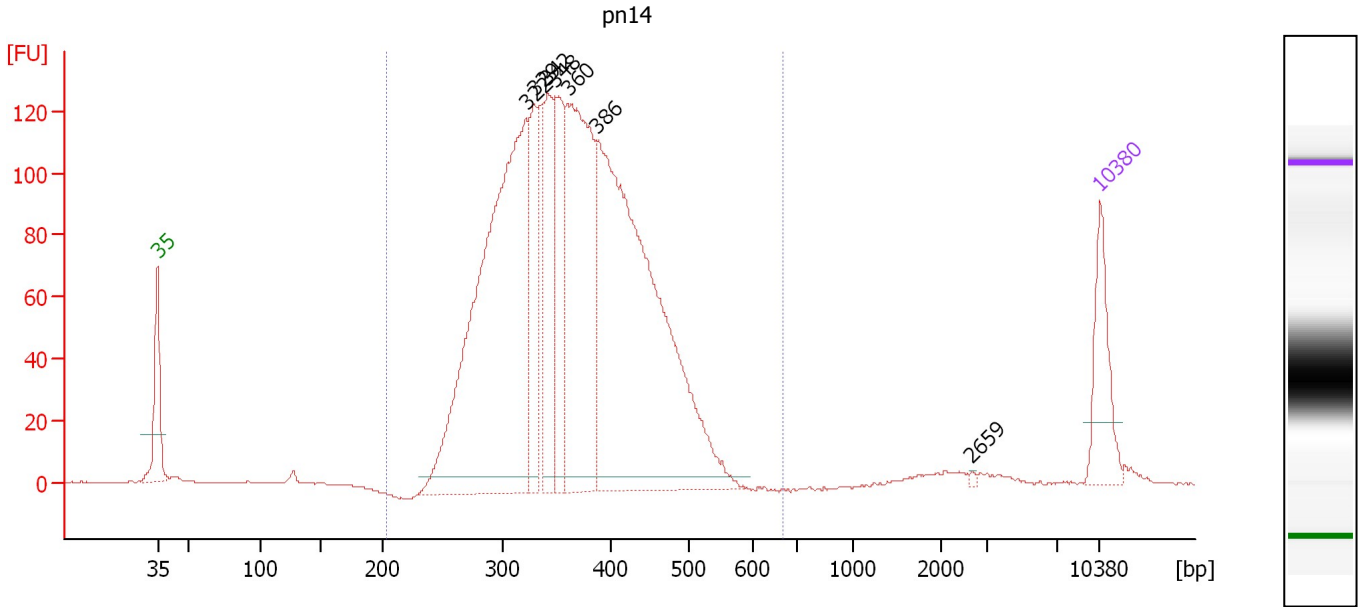
Region table for sample 4 : pn13

From [bp]	To [bp]	Average Size [bp]	Molarity [pmol/l]	Conc. [pg/μl]	Co Corr. lor Area	% of Total	Size distribution in CV [%]
240	734	405	4,901.1	1,261.81	978.1	98	17.1

Assay Class: High Sensitivity DNA Assay
 Data Path: C:\...ents and Settings\Bioanalyzer\2014-02-19\2014-02-19_007.xad

Created: 2/19/2014 2:52:52 PM
 Modified: 2/19/2014 3:51:24 PM

Electropherogram Summary Continued ...



Overall Results for sample 5 : pn14

Number of peaks found: 7 Corr. Area 1: 2,264.5
 Noise: 0.2

Peak table for sample 5 : pn14

Peak	Aligned Migration Time [s]	Size [bp]	Conc. [pg/μl]	Molarity [pmol/l]	Observations
1	43.00	35	125.00	5,411.3	Lower Marker
2	70.35	322	872.70	4,111.8	
3	70.98	329	155.12	713.5	
4	71.98	342	164.88	731.1	
5	72.52	348	180.37	784.3	
6	73.47	360	439.64	1,849.3	
7	75.60	386	885.81	3,472.6	
8	103.45	2,659	2.11	1.2	
9	113.00	10,380	75.00	10.9	Upper Marker

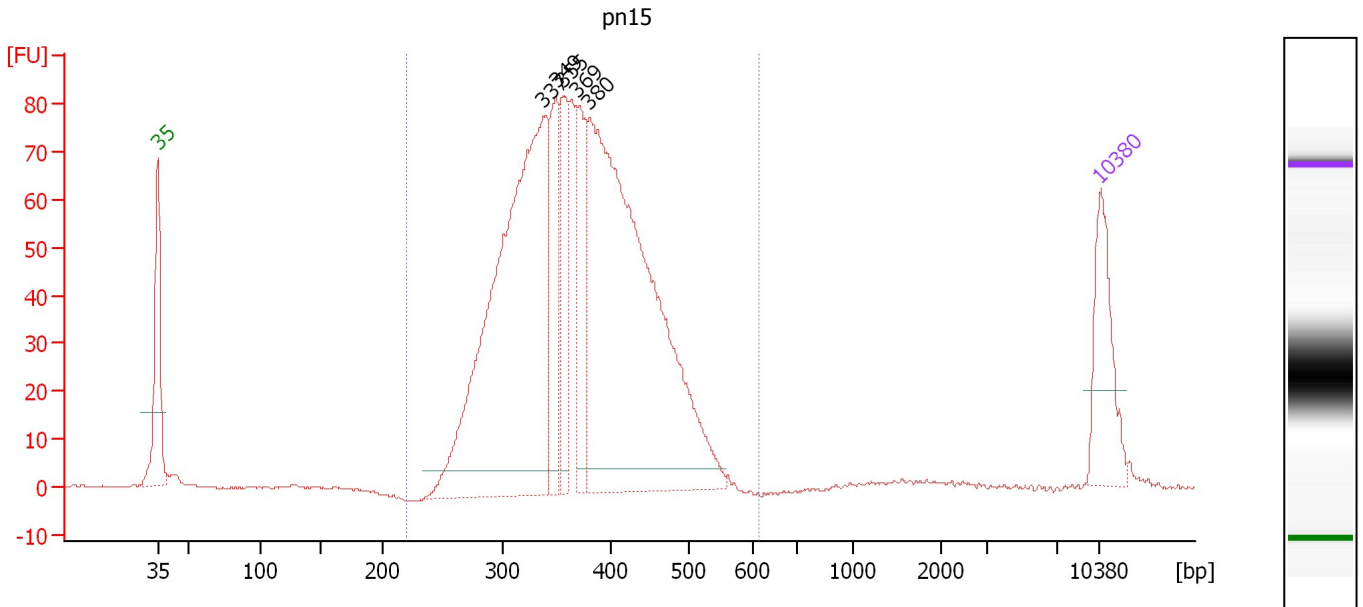
Region table for sample 5 : pn14

From [bp]	To [bp]	Average Size [bp]	Molarity [pmol/l]	Conc. [pg/μl]	Co Corr. lor Area	% of Total	Size distribution in CV [%]
205	667	366	11,426.1	2,652.51	2,264.5	98	17.2

Assay Class: High Sensitivity DNA Assay
 Data Path: C:\...ents and Settings\Bioanalyzer\2014-02-19\2014-02-19_007.xad

Created: 2/19/2014 2:52:52 PM
 Modified: 2/19/2014 3:51:24 PM

Electropherogram Summary Continued ...



Overall Results for sample 6 : pn15

Number of peaks found: 5 Corr. Area 1: 1,347.4
 Noise: 0.2

Peak table for sample 6 : pn15

Peak	Aligned Migration Time [s]	Size [bp]	Conc. [pg/μl]	Molarity [pmol/l]	Observations
1	43.00	35	125.00	5,411.3	Lower Marker
2	71.61	337	705.86	3,171.9	
3	72.58	349	115.33	500.5	
4	73.09	355	100.87	430.0	
5	74.15	369	108.05	444.2	
6	75.07	380	755.55	3,013.0	
7	113.00	10,380	75.00	10.9	Upper Marker

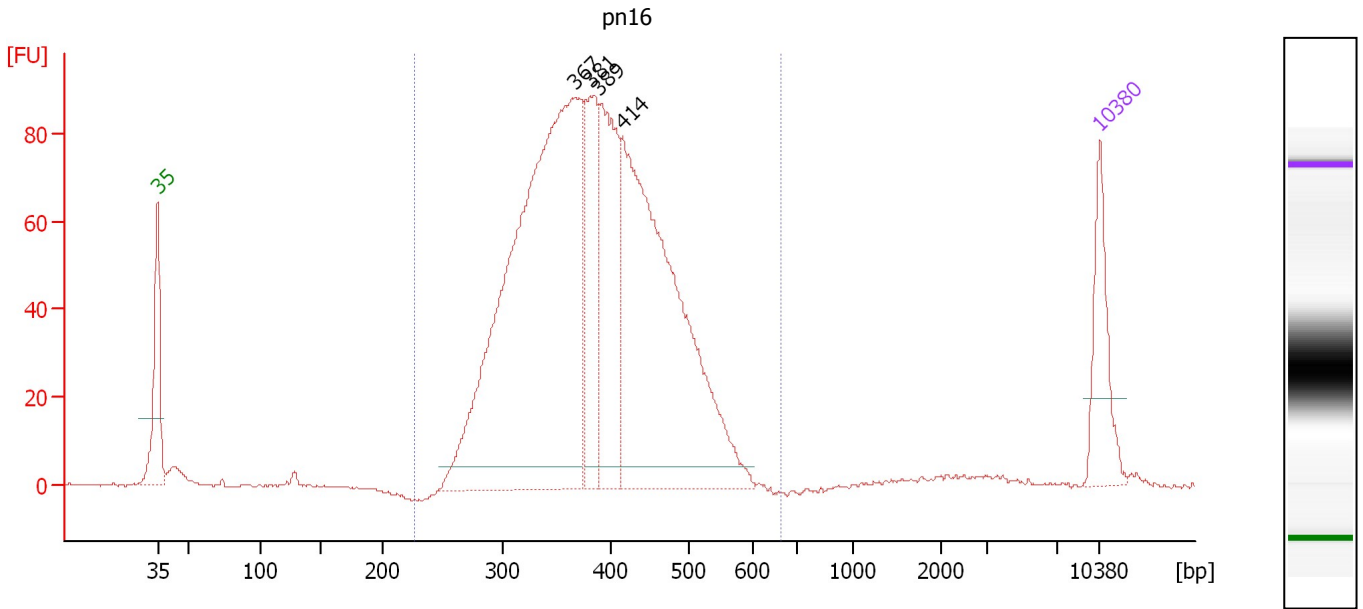
Region table for sample 6 : pn15

From [bp]	To [bp]	Average Size [bp]	Molarity [pmol/l]	Conc. [pg/μl]	Co Corr. lor Area	% of Total	Size distribution in CV [%]
220	614	372	7,675.6	1,823.19	1,347.4	99	16.2

Assay Class: High Sensitivity DNA Assay
 Data Path: C:\...ents and Settings\Bioanalyzer\2014-02-19\2014-02-19_007.xad

Created: 2/19/2014 2:52:52 PM
 Modified: 2/19/2014 3:51:24 PM

Electropherogram Summary Continued ...



Overall Results for sample 7 : pn16

Number of peaks found: 4 Corr. Area 1: 1,528.5
 Noise: 0.2

Peak table for sample 7 : pn16

Peak	Aligned Migration Time [s]	Size [bp]	Conc. [pg/μl]	Molarity [pmol/l]	Observations
1	43.00	35	125.00	5,411.3	Lower Marker
2	74.00	367	1,000.14	4,132.8	
3	75.17	381	165.73	658.7	
4	75.83	389	231.31	900.1	
5	77.53	414	664.88	2,430.4	
6	113.00	10,380	75.00	10.9	Upper Marker

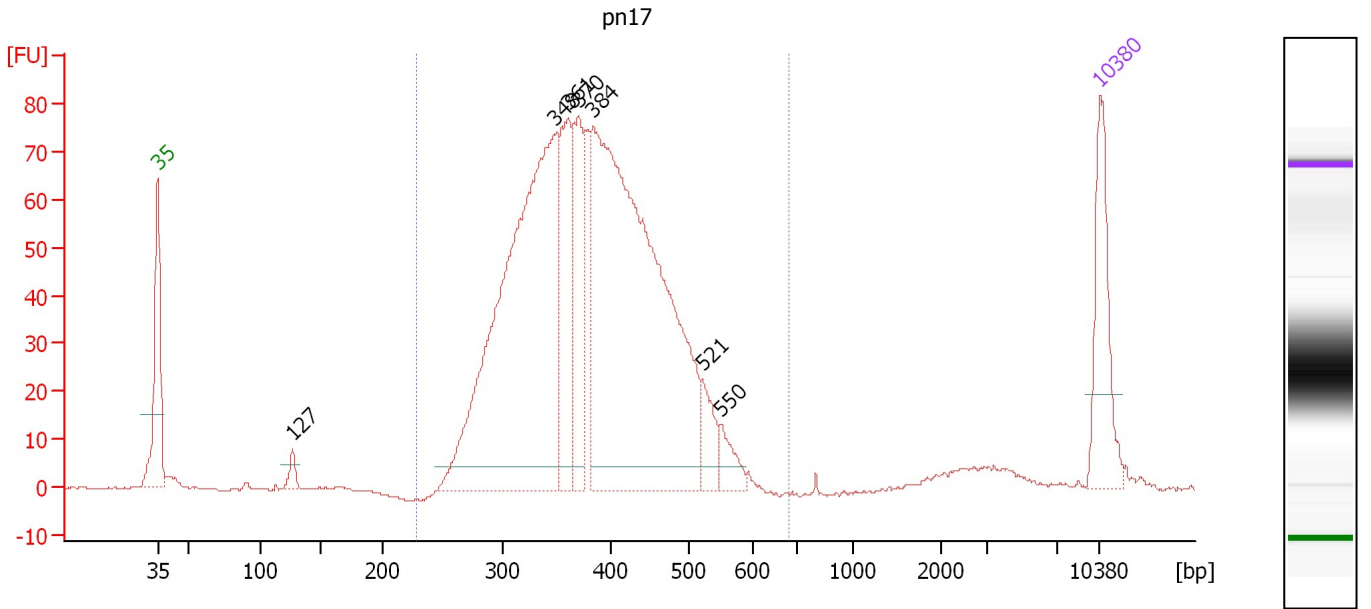
Region table for sample 7 : pn16

From [bp]	To [bp]	Average Size [bp]	Molarity [pmol/l]	Conc. [pg/μl]	Co Corr. for Area	% of Total	Size distribution in CV [%]
227	666	389	8,447.5	2,086.34	1,528.5	98	17.3

Assay Class: High Sensitivity DNA Assay
 Data Path: C:\...ents and Settings\Bioanalyzer\2014-02-19\2014-02-19_007.xad

Created: 2/19/2014 2:52:52 PM
 Modified: 2/19/2014 3:51:24 PM

Electropherogram Summary Continued ...



Overall Results for sample 8 : pn17

Number of peaks found: 7 Corr. Area 1: 1,322.3
 Noise: 0.3

Peak table for sample 8 : pn17

Peak	Aligned Migration Time [s]	Size [bp]	Conc. [pg/μl]	Molarity [pmol/l]	Observations
1	43.00	35	125.00	5,411.3	Lower Marker
2	53.04	127	14.62	174.7	
3	72.46	348	644.39	2,808.5	
4	73.50	361	150.64	633.0	
5	74.26	370	115.88	474.5	
6	75.36	384	739.47	2,921.4	
7	83.45	521	35.63	103.7	
8	84.83	550	24.85	68.4	
9	113.00	10,380	75.00	10.9	Upper Marker

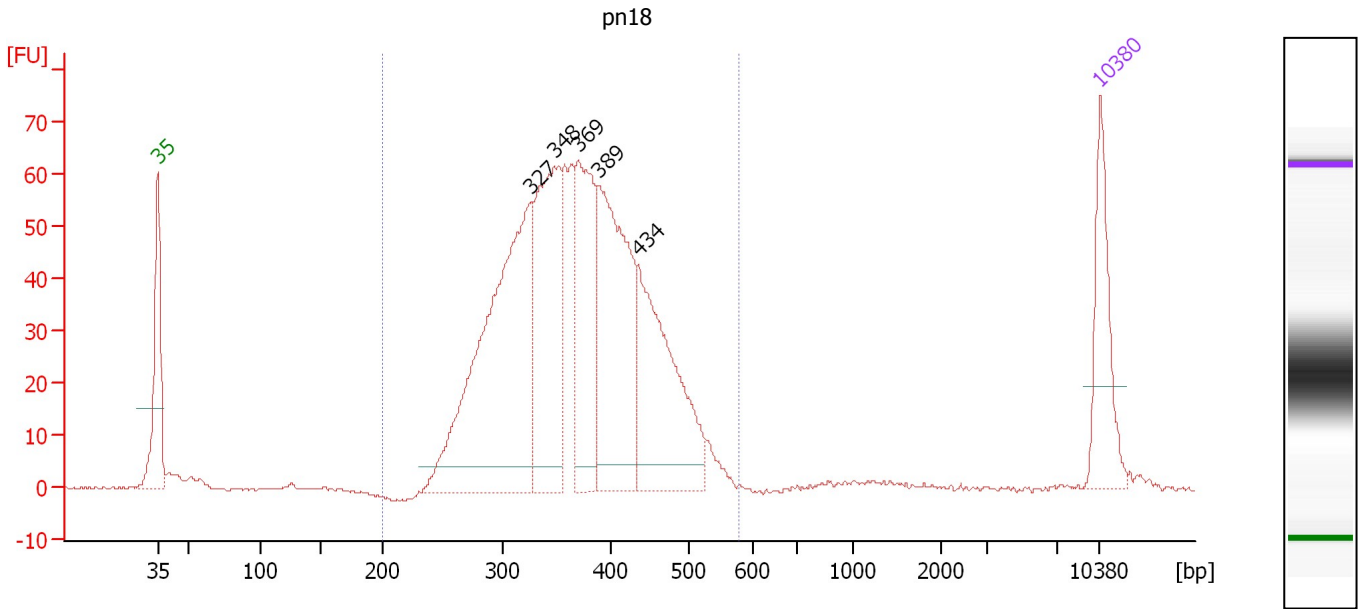
Region table for sample 8 : pn17

From [bp]	To [bp]	Average Size [bp]	Molarity [pmol/l]	Conc. [pg/μl]	Co Corr. lor Area	% of Total	Size distribution in CV [%]
229	681	385	7,148.2	1,747.26	1,322.3	97	17.6

Assay Class: High Sensitivity DNA Assay
 Data Path: C:\...ents and Settings\Bioanalyzer\2014-02-19\2014-02-19_007.xad

Created: 2/19/2014 2:52:52 PM
 Modified: 2/19/2014 3:51:24 PM

Electropherogram Summary Continued ...



Overall Results for sample 9 : pn18

Number of peaks found: 5 Corr. Area 1: 1,075.3
 Noise: 0.3

Peak table for sample 9 : pn18

Peak	Aligned Migration Time [s]	Size [bp]	Conc. [pg/μl]	Molarity [pmol/l]	Observations
1	43.00	35	125.00	5,411.3	Lower Marker
2	70.77	327	471.49	2,186.0	
3	72.45	348	250.96	1,094.2	
4	74.22	369	183.40	752.2	
5	75.80	389	273.35	1,064.9	
6	78.67	434	235.19	820.5	
7	113.00	10,380	75.00	10.9	Upper Marker

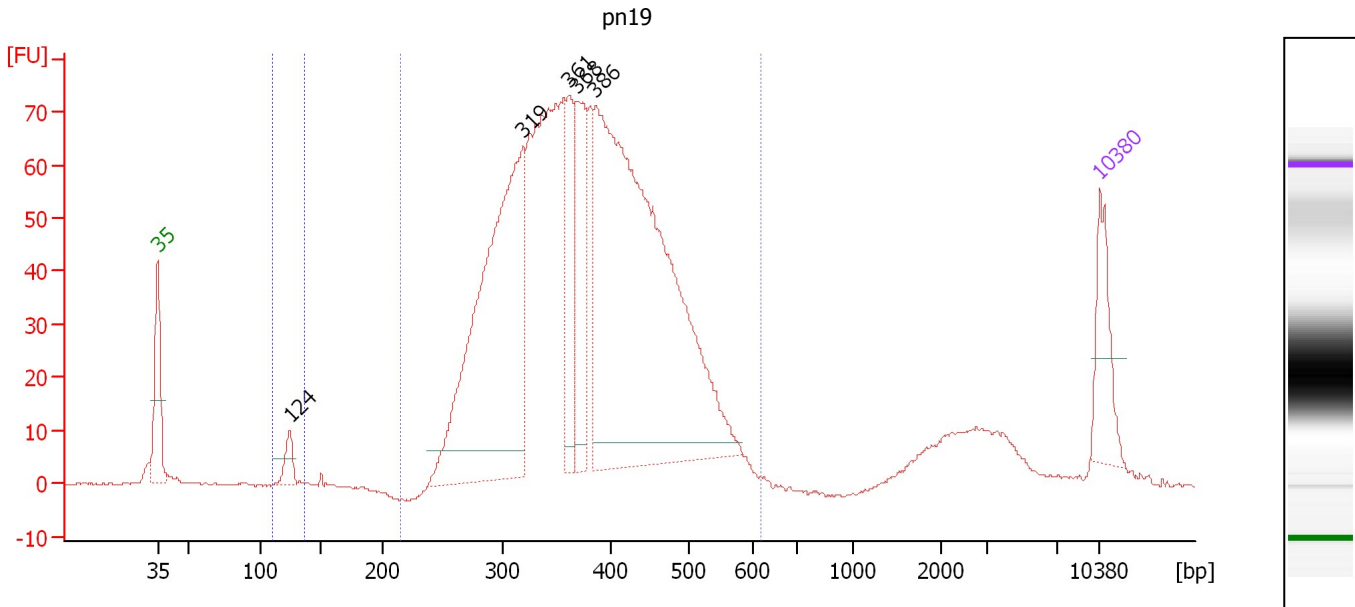
Region table for sample 9 : pn18

From [bp]	To [bp]	Average Size [bp]	Molarity [pmol/l]	Conc. [pg/μl]	Co Corr. lor Area	% of Total	Size distribution in CV [%]
200	579	371	6,535.1	1,538.13	1,075.3	98	17.2

Assay Class: High Sensitivity DNA Assay
 Data Path: C:\...ents and Settings\Bioanalyzer\2014-02-19\2014-02-19_007.xad

Created: 2/19/2014 2:52:52 PM
 Modified: 2/19/2014 3:51:24 PM

Electropherogram Summary Continued ...



Overall Results for sample 10 : pn19

Number of peaks found: 5 Corr. Area 1: 1,396.7
 Noise: 0.2 Corr. Area 2: 12.0

Peak table for sample 10 : pn19

Peak	Aligned Migration Time [s]	Size [bp]	Conc. [pg/μl]	Molarity [pmol/l]	Observations
1	43.00	35	125.00	5,411.3	Lower Marker
2	52.81	124	37.20	453.4	
3	70.13	319	748.69	3,556.7	
4	73.55	361	136.31	571.9	
5	74.13	368	169.76	698.4	
6	75.52	386	1,110.13	4,362.8	
7	113.00	10,380	75.00	10.9	Upper Marker

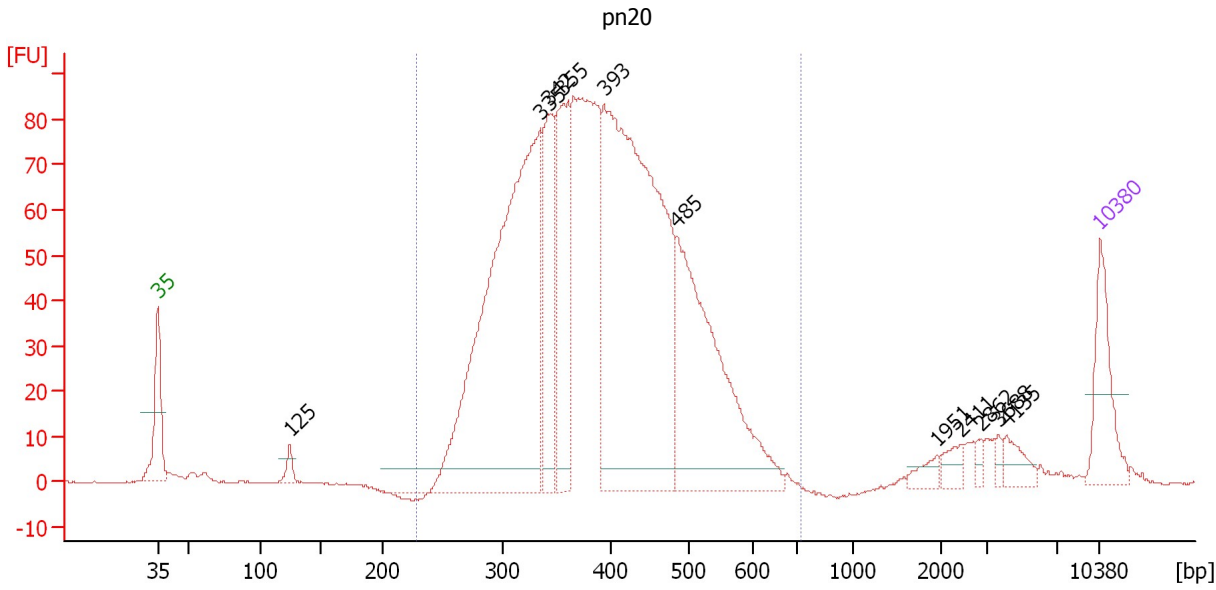
Region table for sample 10 : pn19

From [bp]	To [bp]	Average Size [bp]	Molarity [pmol/l]	Conc. [pg/μl]	Co Corr. lor Area	% of Total	Size distribution in CV [%]
111	136	123	428.7	34.93	12.0	1	2.5
216	618	381	12,499.4	2,995.17	1,396.7	93	19.0

Assay Class: High Sensitivity DNA Assay
 Data Path: C:\...ents and Settings\Bioanalyzer\2014-02-19\2014-02-19_007.xad

Created: 2/19/2014 2:52:52 PM
 Modified: 2/19/2014 3:51:24 PM

Electropherogram Summary Continued ...



Overall Results for sample 11 : pn20

Number of peaks found: 11 Corr. Area 1: 1,672.1
 Noise: 0.2

Peak table for sample 11 : pn20

Peak	Aligned Migration Time [s]	Size [bp]	Conc. [pg/μl]	Molarity [pmol/l]	Observations
1	43.00	35	125.00	5,411.3	Lower Marker
2	52.85	125	19.32	234.8	
3	71.43	335	885.42	4,004.5	
4	72.01	342	171.96	761.4	
5	73.08	355	232.60	991.9	
6	76.17	393	903.71	3,479.9	
7	81.57	485	446.74	1,396.8	
8	100.93	1,951	15.88	12.3	
9	102.62	2,411	17.92	11.3	
10	104.12	2,862	8.01	4.2	
11	105.47	3,688	8.31	3.4	
12	106.05	4,135	23.82	8.7	
13	113.00	10,380	75.00	10.9	Upper Marker

Region table for sample 11 : pn20

From [bp]	To [bp]	Average Size [bp]	Molarity [pmol/l]	Conc. [pg/μl]	Co Corr. lor Area	% of Total	Size distribution in CV [%]
229	726	395	12,217.3	3,020.53	1,672.1	95	20.1

Assay Class: High Sensitivity DNA Assay
Data Path: C:\...ents and Settings\Bioanalyzer\2014-02-19\2014-02-19_007.xad

Created: 2/19/2014 2:52:52 PM
Modified: 2/19/2014 3:51:24 PM

Gel Image

