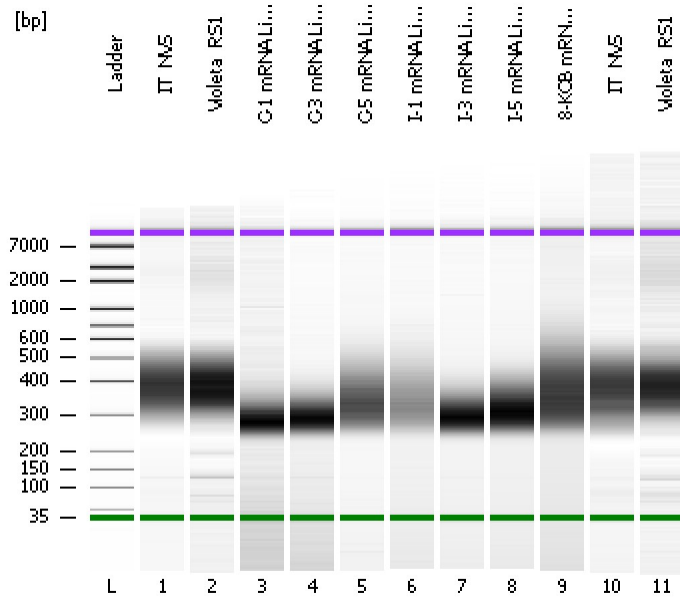


Assay Class: High Sensitivity DNA Assay
Data Path: C:\...ents and Settings\Bioanalyzer\2014-02-19\2014-02-19_009.xad

Created: 2/19/2014 5:36:58 PM
Modified: 2/19/2014 6:18:44 PM

Electrophoresis File Run Summary



Instrument Information:

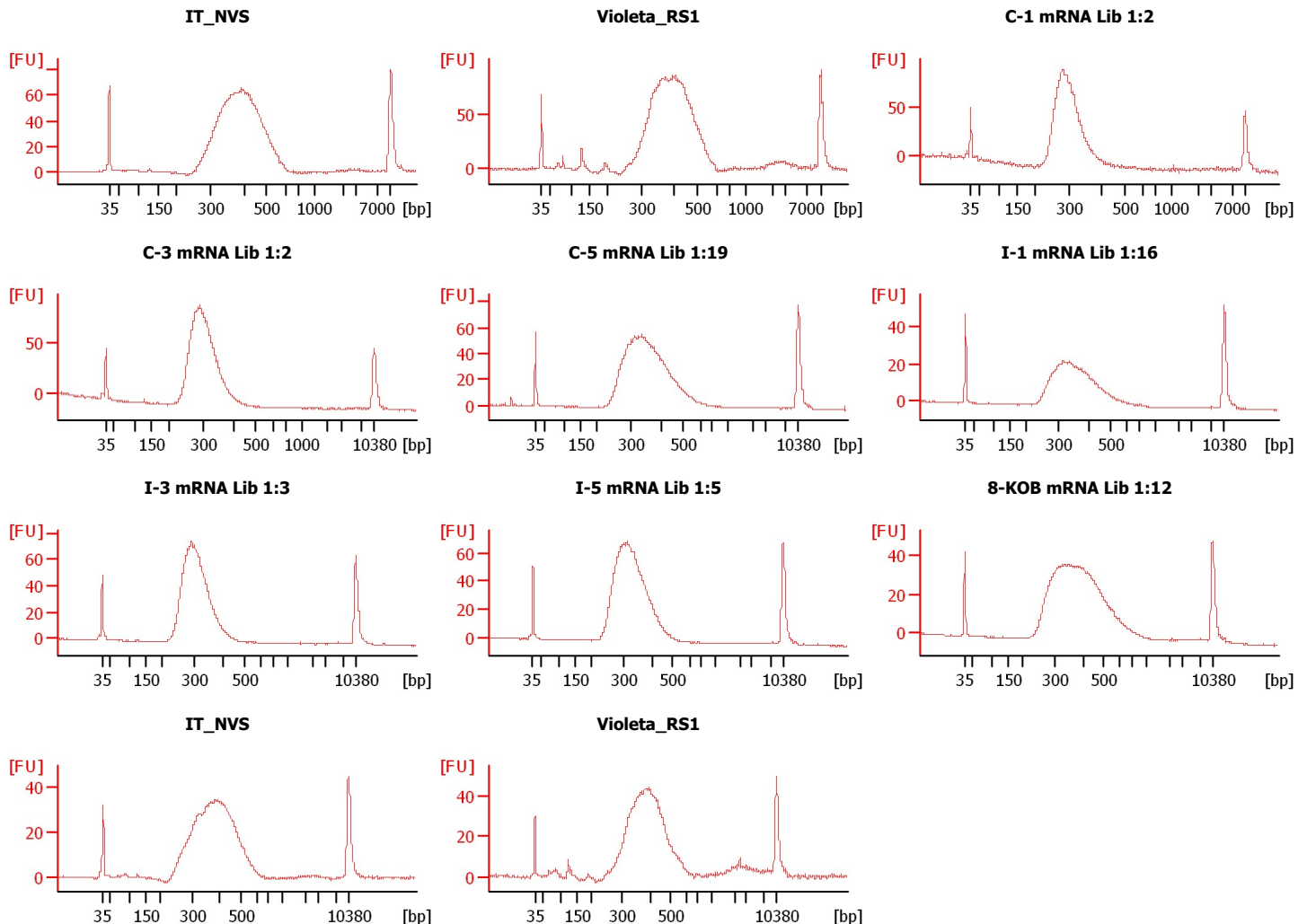
Instrument Name: DE13701086 Firmware: C.01.069
Serial#: DE13701086 Type: G2938B

Assay Information:

Assay Origin Path: C:\Program Files\Agilent\2100 bioanalyzer\2100 expert\assays\dsDNA\High Sensitivity DNA.xsy
Assay Class: High Sensitivity DNA Assay
Version: 1.03
Assay Comments: Copyright © 2003-2010 Agilent Technologies

Chip Information:

Chip Lot #:
Reagent Kit Lot #:
Chip Comments:



Assay Class: High Sensitivity DNA Assay
 Data Path: C:\...ents and Settings\Bioanalyzer\2014-02-19\2014-02-19_009.xad

Created: 2/19/2014 5:36:58 PM
 Modified: 2/19/2014 6:18:44 PM

Electrophoresis File Run Summary (Chip Summary)

Sample Name	Sample Comment	Rest. Digest	Status	Observation	Result Label	Result Color
IT_NVS		<input type="checkbox"/>	✓			
Violeta_RS1		<input type="checkbox"/>	✓			
C-1 mRNA Lib 1:2		<input type="checkbox"/>	✓			
C-3 mRNA Lib 1:2		<input type="checkbox"/>	✓			
C-5 mRNA Lib 1:19		<input type="checkbox"/>	✓			
I-1 mRNA Lib 1:16		<input type="checkbox"/>	✓			
I-3 mRNA Lib 1:3		<input type="checkbox"/>	✓			
I-5 mRNA Lib 1:5		<input type="checkbox"/>	✓			
8-KOB mRNA Lib 1:12		<input type="checkbox"/>	✓			
IT_NVS		<input type="checkbox"/>	✓			
Violeta_RS1		<input type="checkbox"/>	✓			
Ladder		<input type="checkbox"/>	✓			

Chip Lot #

Reagent Kit Lot #

Chip Comments :

Assay Class: High Sensitivity DNA Assay
Data Path: C:\...ents and Settings\Bioanalyzer\2014-02-19\2014-02-19_009.xad

Created: 2/19/2014 5:36:58 PM
Modified: 2/19/2014 6:18:44 PM

Electrophoresis Assay Details

General Analysis Settings

Number of Available Sample and Ladder Wells (Max.) : 12
Minimum Visible Range [s] : 32
Maximum Visible Range [s] : 138
Start Analysis Time Range [s] : 33
End Analysis Time Range [s] : 137.5
Ladder Concentration [pg/μl] : 1950
Uses Standard Area for Ladder Fragments
Lower Marker Concentration [pg/μl] : 125
Upper Marker Concentration [pg/μl] : 75
Used Upper Marker for Quantitation
Standard Curve Fit is Point to Point
Show Data Aligned to Lower and Upper Marker

Integrator Settings

Integration Start Time [s] : 33.05
Integration End Time [s] : 137
Slope Threshold : 0.8
Height Threshold [FU] : 5
Area Threshold : 0.1
Width Threshold [s] : 0.6
Baseline Plateau [s] : 0.5

Filter Settings

Filter Width [s] : 0.5
Polynomial Order : 4

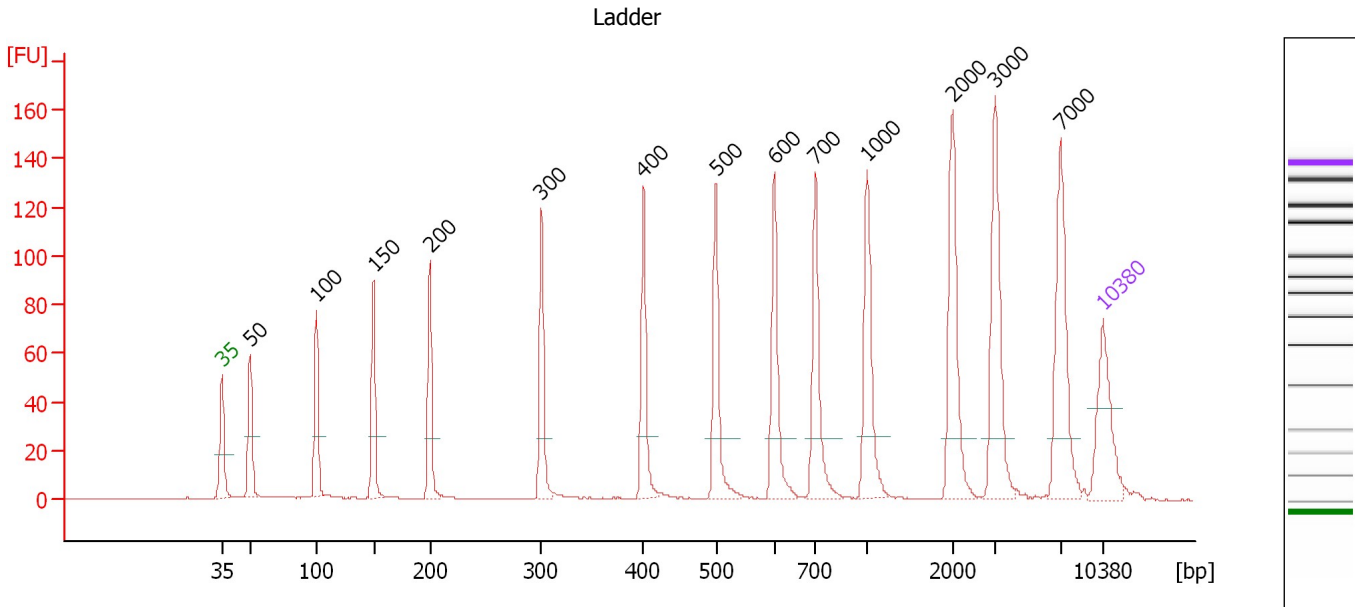
Ladder

Ladder Peak	Size	Area
1	35	160
2	50	210
3	100	208
4	150	221
5	200	242
6	300	270
7	400	305
8	500	306
9	600	336
10	700	321
11	1000	366
12	2000	413
13	3000	411
14	7000	400
15	10380	214

Assay Class: High Sensitivity DNA Assay
 Data Path: C:\...ents and Settings\Bioanalyzer\2014-02-19\2014-02-19_009.xad

Created: 2/19/2014 5:36:58 PM
 Modified: 2/19/2014 6:18:44 PM

Electropherogram Summary



Overall Results for Ladder

Noise: 0.1

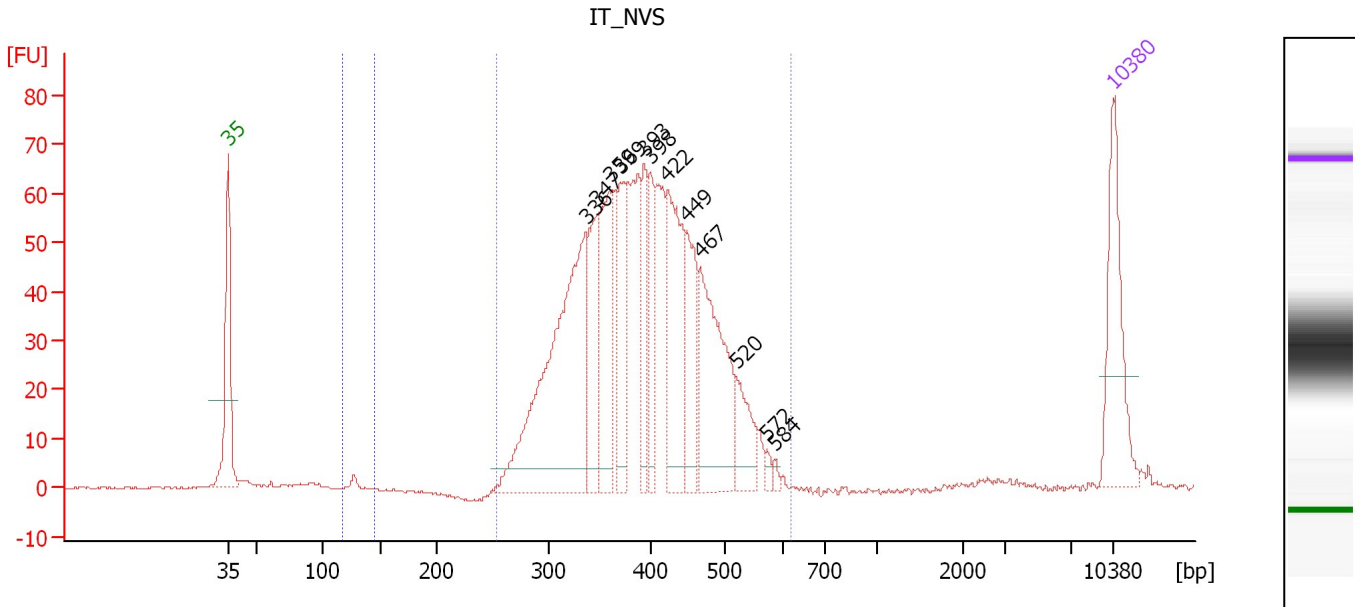
Peak table for Ladder

Peak	Aligned Migration Time [s]	Size [bp]	Conc. [pg/μl]	Molarity [pmol/l]	Observations
1	43.00	35	125.00	5,411.3	Lower Marker
2	45.20	50	150.00	4,545.5	Ladder Peak
3	50.50	100	150.00	2,272.7	Ladder Peak
4	55.03	150	150.00	1,515.2	Ladder Peak
5	59.48	200	150.00	1,136.4	Ladder Peak
6	68.38	300	150.00	757.6	Ladder Peak
7	76.47	400	150.00	568.2	Ladder Peak
8	82.24	500	150.00	454.5	Ladder Peak
9	86.90	600	150.00	378.8	Ladder Peak
10	90.16	700	150.00	324.7	Ladder Peak
11	94.27	1,000	150.00	227.3	Ladder Peak
12	101.05	2,000	150.00	113.6	Ladder Peak
13	104.40	3,000	150.00	75.8	Ladder Peak
14	109.61	7,000	150.00	32.5	Ladder Peak
15	113.00	10,380	75.00	10.9	Upper Marker

Assay Class: High Sensitivity DNA Assay
 Data Path: C:\...ents and Settings\Bioanalyzer\2014-02-19\2014-02-19_009.xad

Created: 2/19/2014 5:36:58 PM
 Modified: 2/19/2014 6:18:44 PM

Electropherogram Summary Continued ...



Overall Results for sample 1 : IT_NVS

Number of peaks found: 12 Corr. Area 1: 1,152.5
 Noise: 0.2 Corr. Area 2: 3.1

Peak table for sample 1 : IT_NVS

Peak	Aligned Migration Time [s]	Size [bp]	Conc. [pg/μl]	Molarity [pmol/l]	Observations
1	43.00	35	125.00	5,411.3	Lower Marker
2	71.28	336	339.52	1,532.0	
3	72.21	347	94.39	411.8	
4	73.17	359	112.78	475.7	
5	73.98	369	79.22	325.2	
6	75.87	393	60.03	231.7	
7	76.34	398	57.79	219.8	
8	77.73	422	132.50	476.0	
9	79.29	449	80.08	270.4	
10	80.34	467	157.36	510.5	
11	83.16	520	45.77	133.4	
12	85.61	572	5.94	15.7	
13	86.15	584	3.97	10.3	
14	113.00	10,380	75.00	10.9	Upper Marker

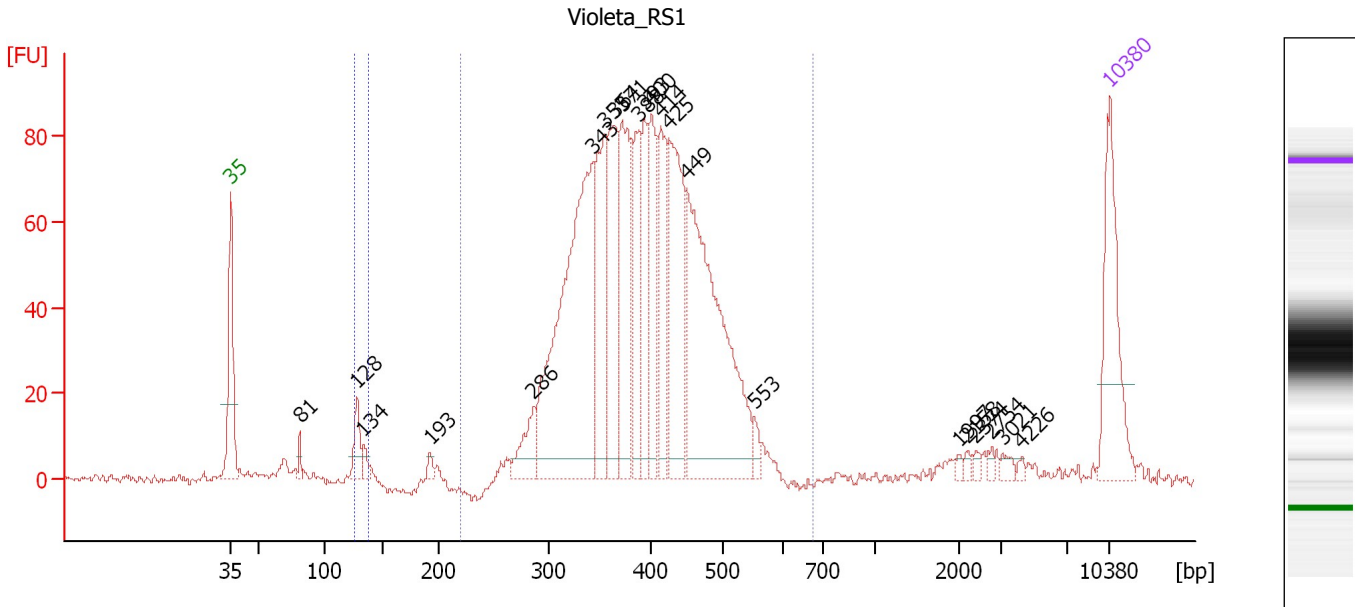
Region table for sample 1 : IT_NVS

From [bp]	To [bp]	Average Size [bp]	Molarity [pmol/l]	Conc. [pg/μl]	Co Corr. lor Area	% of Total	Size distribution in CV [%]
117	144	127	62.4	5.23	3.1	0	2.6
254	618	396	5,737.3	1,441.60	1,152.5	97	17.2

Assay Class: High Sensitivity DNA Assay
 Data Path: C:\...ents and Settings\Bioanalyzer\2014-02-19\2014-02-19_009.xad

Created: 2/19/2014 5:36:58 PM
 Modified: 2/19/2014 6:18:44 PM

Electropherogram Summary Continued ...



Overall Results for sample 2 : Violeta_RS1

Number of peaks found: 22 Corr. Area 1: 1,458.6
 Noise: 0.9 Corr. Area 2: 22.1

Peak table for sample 2 : Violeta_RS1

Peak	Aligned Migration Time [s]	Size [bp]	Conc. [pg/μl]	Molarity [pmol/l]	Observations
1	43.00	35	125.00	5,411.3	Lower Marker
2	48.48	81	8.45	158.3	
3	53.06	128	28.16	332.7	
4	53.57	134	9.72	110.0	
5	58.83	193	6.31	49.6	
6	67.11	286	36.88	195.5	
7	71.87	343	354.16	1,564.2	
8	72.80	355	115.38	493.0	
9	73.56	364	124.77	519.3	
10	74.16	371	122.40	499.4	
11	75.47	388	76.18	297.8	
12	75.94	393	67.02	258.1	
13	76.49	400	85.84	324.9	
14	77.26	414	87.51	320.6	
15	77.89	425	148.36	529.4	
16	79.29	449	295.61	997.7	
17	84.73	553	10.26	28.1	
18	101.03	1,997	2.78	2.1	
19	101.58	2,158	3.28	2.3	
20	102.30	2,374	3.59	2.3	
21	103.58	2,754	2.89	1.6	
22	104.43	3,021	5.00	2.5	
23	106.00	4,226	2.47	0.9	
24	113.00	10,380	75.00	10.9	Upper Marker

Assay Class: High Sensitivity DNA Assay
Data Path: C:\...ents and Settings\Bioanalyzer\2014-02-19\2014-02-19_009.xad

Created: 2/19/2014 5:36:58 PM
Modified: 2/19/2014 6:18:44 PM

Electropherogram Summary Continued ...

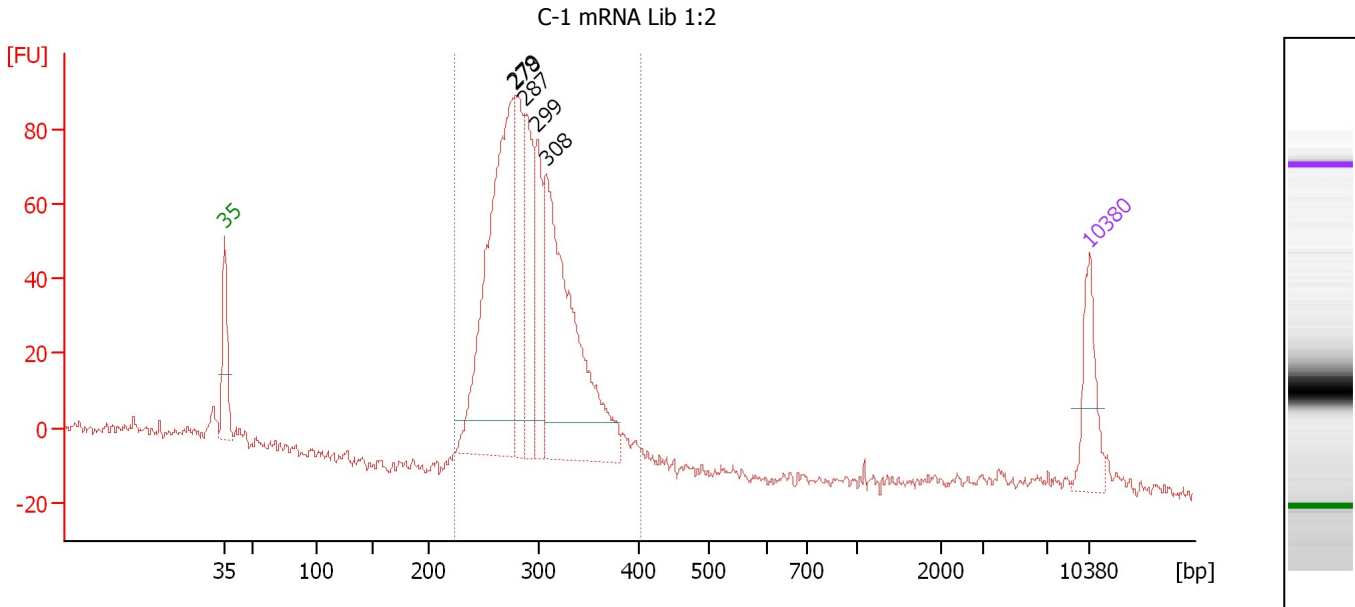
... Region table for sample 2 : Violeta_RS1

From [bp]	To [bp]	Average Size [bp]	Molarity [pmol/l]	Conc. [pg/μl]	Co Corr. lor Area	% of Total	Size distribution in CV [%]
126	138	130	385.9	33.21	■ 22.1	1	2.4
221	677	396	6,371.8	1,607.57	■ 1,458.6	91	16.4

Assay Class: High Sensitivity DNA Assay
 Data Path: C:\...ents and Settings\Bioanalyzer\2014-02-19\2014-02-19_009.xad

Created: 2/19/2014 5:36:58 PM
 Modified: 2/19/2014 6:18:44 PM

Electropherogram Summary Continued ...



Setpoint Deviations for sample 3 : C-1 mRNA Lib 1:2

Height Threshold [FU] : 10

Overall Results for sample 3 : C-1 mRNA Lib 1:2

Number of peaks found: 5 Corr. Area 1: 975.8
 Noise: 1.6

Peak table for sample 3 : C-1 mRNA Lib 1:2

Peak	Aligned Migration Time [s]	Size [bp]	Conc. [pg/μl]	Molarity [pmol/l]	Observations
1	43.00	35	125.00	5,411.3	Lower Marker
2	66.45	278	656.19	3,572.8	
3	66.53	279	191.59	1,039.5	
4	67.27	287	195.94	1,032.6	
5	68.26	299	155.00	786.3	
6	69.00	308	556.51	2,741.2	
7	113.00	10,380	75.00	10.9	Upper Marker

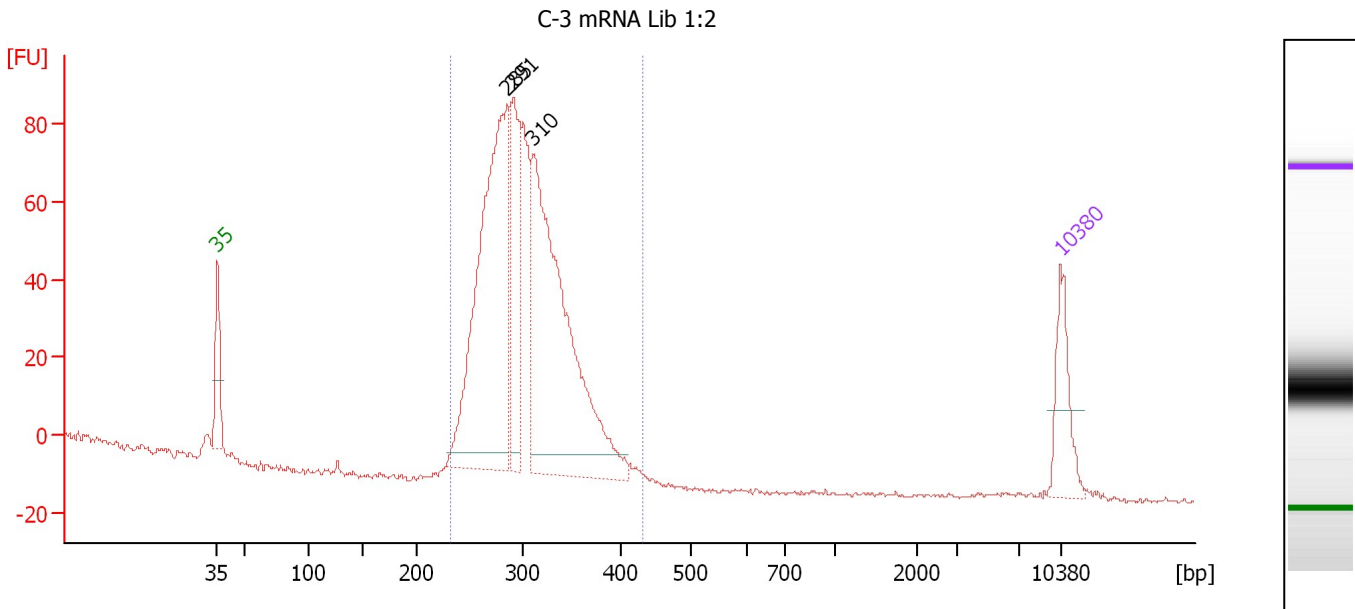
Region table for sample 3 : C-1 mRNA Lib 1:2

From [bp]	To [bp]	Average Size [bp]	Molarity [pmol/l]	Conc. [pg/μl]	Co Corr. for Area	% of Total	Size distribution in CV [%]
223	404	295	8,861.3	1,699.85	975.8	98	11.1

Assay Class: High Sensitivity DNA Assay
 Data Path: C:\...ents and Settings\Bioanalyzer\2014-02-19\2014-02-19_009.xad

Created: 2/19/2014 5:36:58 PM
 Modified: 2/19/2014 6:18:44 PM

Electropherogram Summary Continued ...



Overall Results for sample 4 : C-3 mRNA Lib 1:2

Number of peaks found: 3 Corr. Area 1: 985.1
 Noise: 0.6

Peak table for sample 4 : C-3 mRNA Lib 1:2

Peak	Aligned Migration Time [s]	Size [bp]	Conc. [pg/μl]	Molarity [pmol/l]	Observations
1	43.00	35	125.00	5,411.3	Lower Marker
2	67.09	285	723.06	3,838.1	
3	67.57	291	222.93	1,161.1	
4	69.17	310	715.23	3,499.0	
5	113.00	10,380	75.00	10.9	Upper Marker

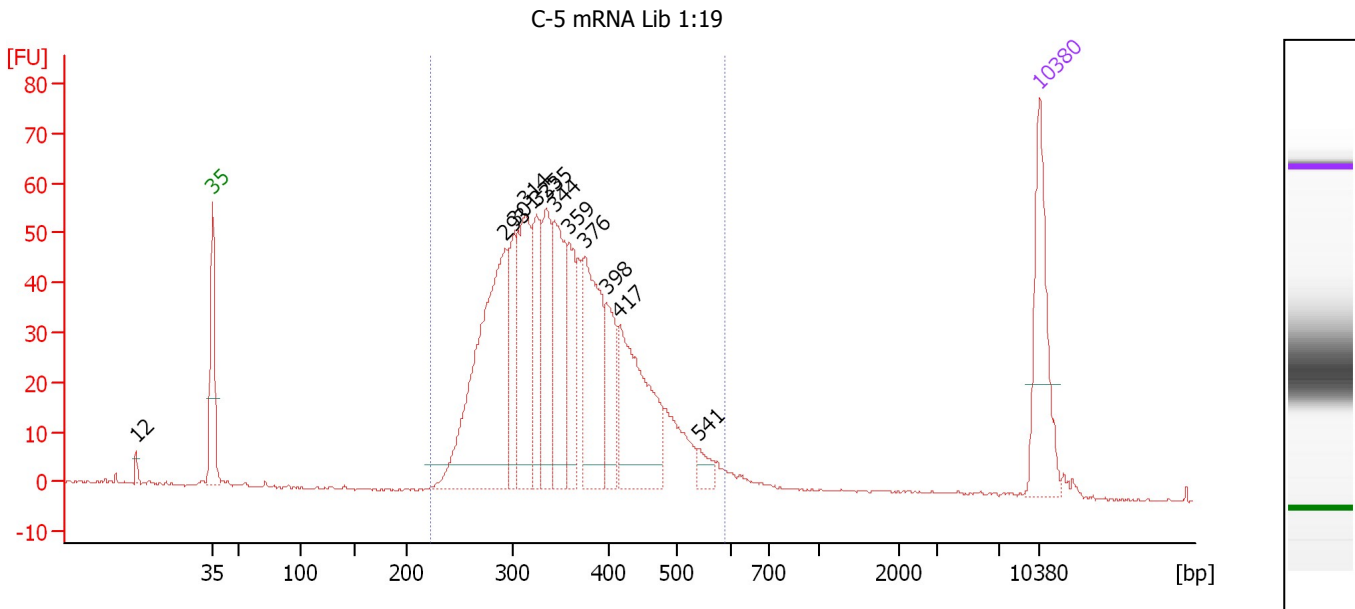
Region table for sample 4 : C-3 mRNA Lib 1:2

From [bp]	To [bp]	Average Size [bp]	Molarity [pmol/l]	Conc. [pg/μl]	Co Corr. lor Area	% of Total	Size distribution in CV [%]
232	432	302	8,831.3	1,733.26	985.1	100	11.0

Assay Class: High Sensitivity DNA Assay
 Data Path: C:\...ents and Settings\Bioanalyzer\2014-02-19\2014-02-19_009.xad

Created: 2/19/2014 5:36:58 PM
 Modified: 2/19/2014 6:18:44 PM

Electropherogram Summary Continued ...



Overall Results for sample 5 : C-5 mRNA Lib 1:19

Number of peaks found: 12 Corr. Area 1: 1,025.2
 Noise: 0.3

Peak table for sample 5 : C-5 mRNA Lib 1:19

Peak	Aligned Migration Time [s]	Size [bp]	Conc. [pg/μl]	Molarity [pmol/l]	Observations
1	36.50	12	0.00	0.0	
2	43.00	35	125.00	5,411.3	Lower Marker
3	67.78	293	306.79	1,585.3	
4	68.50	301	65.23	327.9	
5	69.49	314	129.77	626.7	
6	70.40	325	75.87	353.8	
7	71.25	335	93.72	423.3	
8	71.93	344	121.16	533.9	
9	73.19	359	66.03	278.3	
10	74.55	376	137.43	553.5	
11	76.31	398	60.49	230.3	
12	77.44	417	147.79	537.4	
13	84.16	541	13.81	38.6	
14	113.00	10,380	75.00	10.9	Upper Marker

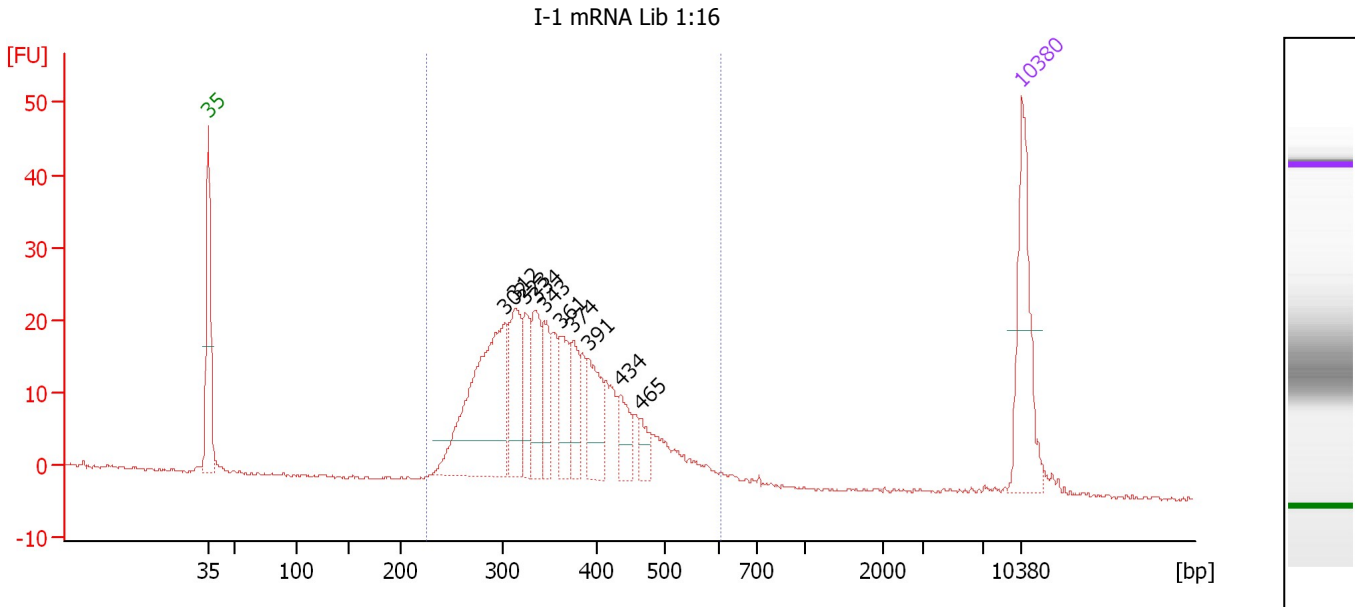
Region table for sample 5 : C-5 mRNA Lib 1:19

From [bp]	To [bp]	Average Size [bp]	Molarity [pmol/l]	Conc. [pg/μl]	Co Corr. lor Area	% of Total	Size distribution in CV [%]
223	589	358	5,967.3	1,342.84	1,025.2	97	19.6

Assay Class: High Sensitivity DNA Assay
 Data Path: C:\...ents and Settings\Bioanalyzer\2014-02-19\2014-02-19_009.xad

Created: 2/19/2014 5:36:58 PM
 Modified: 2/19/2014 6:18:44 PM

Electropherogram Summary Continued ...



Overall Results for sample 6 : I-1 mRNA Lib 1:16

Number of peaks found: 10 Corr. Area 1: 427.2
 Noise: 0.2

Peak table for sample 6 : I-1 mRNA Lib 1:16

Peak	Aligned Migration Time [s]	Size [bp]	Conc. [pg/μl]	Molarity [pmol/l]	Observations
1	43.00	35	125.00	5,411.3	Lower Marker
2	68.55	302	214.40	1,075.3	
3	69.33	312	78.68	382.4	
4	70.25	323	43.91	206.0	
5	71.17	334	57.05	258.5	
6	71.85	343	42.22	186.6	
7	73.32	361	48.52	203.6	
8	74.38	374	40.43	163.8	
9	75.75	391	52.60	203.8	
10	78.46	434	32.55	113.5	
11	80.20	465	15.72	51.2	
12	113.00	10,380	75.00	10.9	Upper Marker

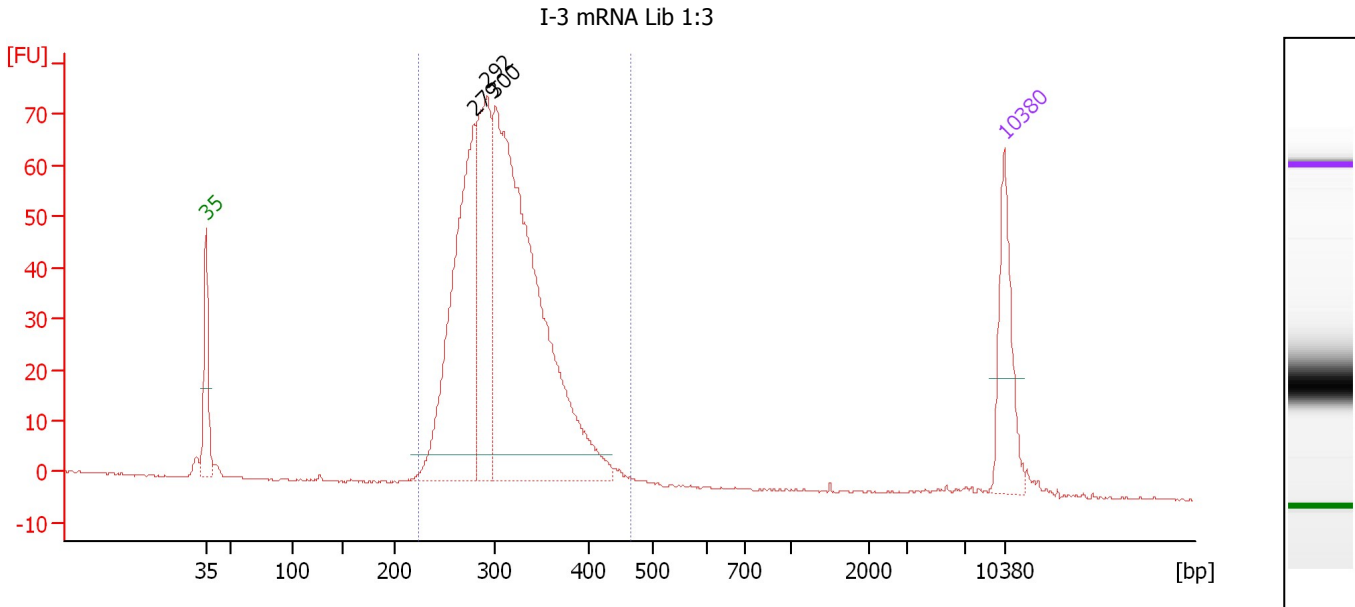
Region table for sample 6 : I-1 mRNA Lib 1:16

From [bp]	To [bp]	Average Size [bp]	Molarity [pmol/l]	Conc. [pg/μl]	Co Corr. lor Area	% of Total	Size distribution in CV [%]
226	606	359	3,656.1	823.53	427.2	97	20.1

Assay Class: High Sensitivity DNA Assay
 Data Path: C:\...ents and Settings\Bioanalyzer\2014-02-19\2014-02-19_009.xad

Created: 2/19/2014 5:36:58 PM
 Modified: 2/19/2014 6:18:44 PM

Electropherogram Summary Continued ...



Overall Results for sample 7 : I-3 mRNA Lib 1:3

Number of peaks found: 3 Corr. Area 1: 895.2
 Noise: 0.2

Peak table for sample 7 : I-3 mRNA Lib 1:3

Peak	Aligned Migration Time [s]	Size [bp]	Conc. [pg/μl]	Molarity [pmol/l]	Observations
1	43.00	35	125.00	5,411.3	Lower Marker
2	66.47	279	403.61	2,195.3	
3	67.64	292	244.45	1,269.7	
4	68.34	300	785.15	3,970.9	
5	113.00	10,380	75.00	10.9	Upper Marker

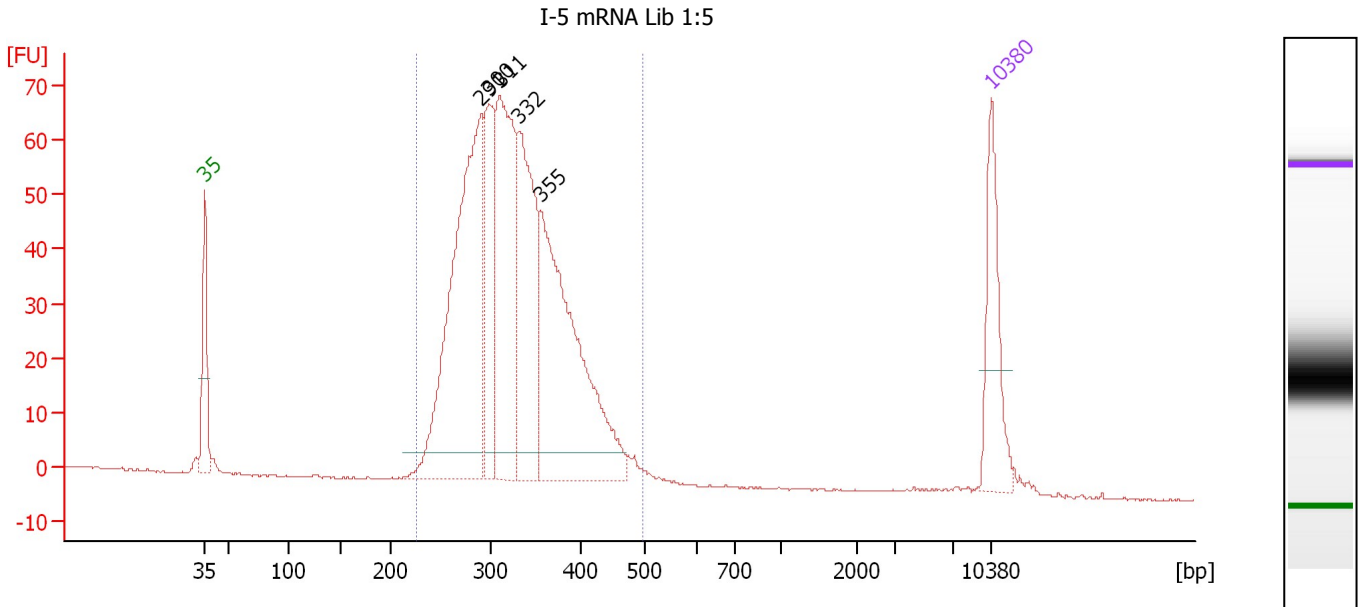
Region table for sample 7 : I-3 mRNA Lib 1:3

From [bp]	To [bp]	Average Size [bp]	Molarity [pmol/l]	Conc. [pg/μl]	Co Corr. lor Area	% of Total	Size distribution in CV [%]
224	464	309	7,072.1	1,413.63	895.2	97	13.3

Assay Class: High Sensitivity DNA Assay
 Data Path: C:\...ents and Settings\Bioanalyzer\2014-02-19\2014-02-19_009.xad

Created: 2/19/2014 5:36:58 PM
 Modified: 2/19/2014 6:18:44 PM

Electropherogram Summary Continued ...



Overall Results for sample 8 : I-5 mRNA Lib 1:5

Number of peaks found: 5 Corr. Area 1: 1,022.9
 Noise: 0.2

Peak table for sample 8 : I-5 mRNA Lib 1:5

Peak	Aligned Migration Time [s]	Size [bp]	Conc. [pg/μl]	Molarity [pmol/l]	Observations
1	43.00	35	125.00	5,411.3	Lower Marker
2	67.58	291	455.66	2,372.2	
3	68.34	300	140.87	712.5	
4	69.29	311	264.29	1,286.6	
5	70.95	332	231.12	1,055.5	
6	72.85	355	358.74	1,530.1	
7	113.00	10,380	75.00	10.9	Upper Marker

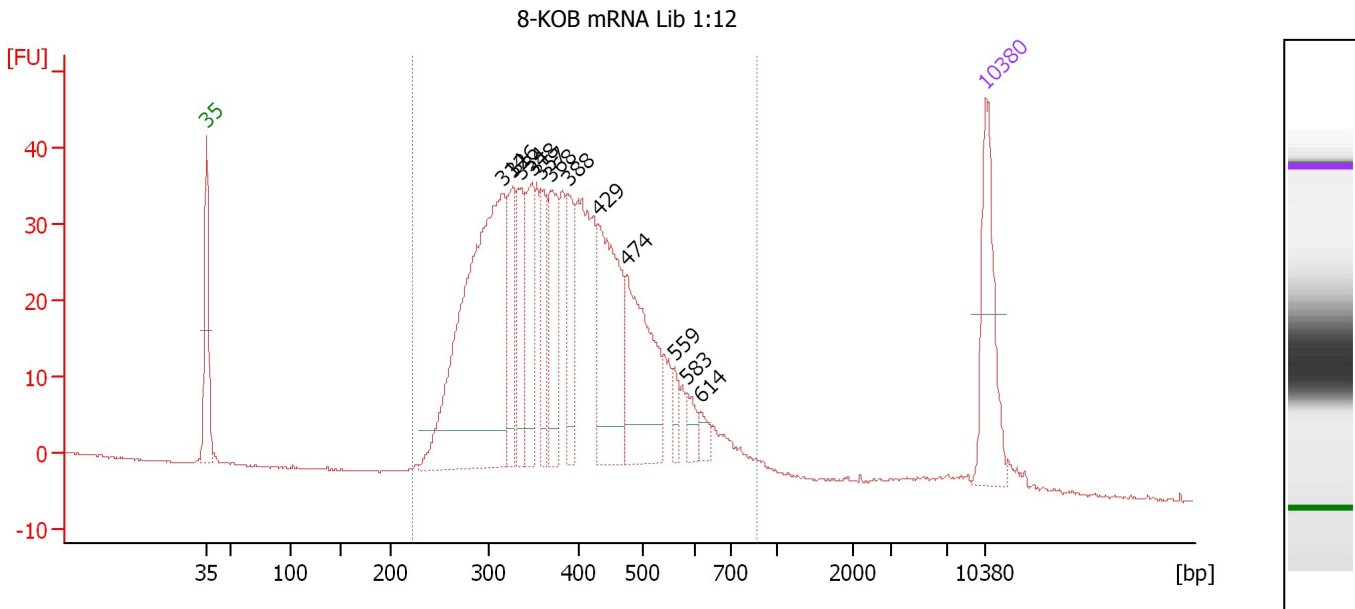
Region table for sample 8 : I-5 mRNA Lib 1:5

From [bp]	To [bp]	Average Size [bp]	Molarity [pmol/l]	Conc. [pg/μl]	Co Corr. lor Area	% of Total	Size distribution in CV [%]
227	495	328	7,015.1	1,473.13	1,022.9	98	15.2

Assay Class: High Sensitivity DNA Assay
 Data Path: C:\...ents and Settings\Bioanalyzer\2014-02-19\2014-02-19_009.xad

Created: 2/19/2014 5:36:58 PM
 Modified: 2/19/2014 6:18:44 PM

Electropherogram Summary Continued ...



Overall Results for sample 9 : 8-KOB mRNA Lib 1:12

Number of peaks found: 12 Corr. Area 1: 892.4
 Noise: 0.1

Peak table for sample 9 : 8-KOB mRNA Lib 1:12

Peak	Aligned Migration Time [s]	Size [bp]	Conc. [pg/μl]	Molarity [pmol/l]	Observations
1	43.00	35	125.00	5,411.3	Lower Marker
2	69.54	314	445.44	2,146.9	
3	70.50	326	76.18	353.8	
4	71.17	334	65.56	297.0	
5	72.23	348	77.70	338.8	
6	72.99	357	61.62	261.5	
7	73.90	368	89.13	366.7	
8	75.48	388	63.94	249.8	
9	78.17	429	155.77	549.7	
10	80.75	474	138.94	443.8	
11	84.97	559	15.03	40.8	
12	86.12	583	16.42	42.6	
13	87.37	614	11.75	29.0	
14	113.00	10,380	75.00	10.9	Upper Marker

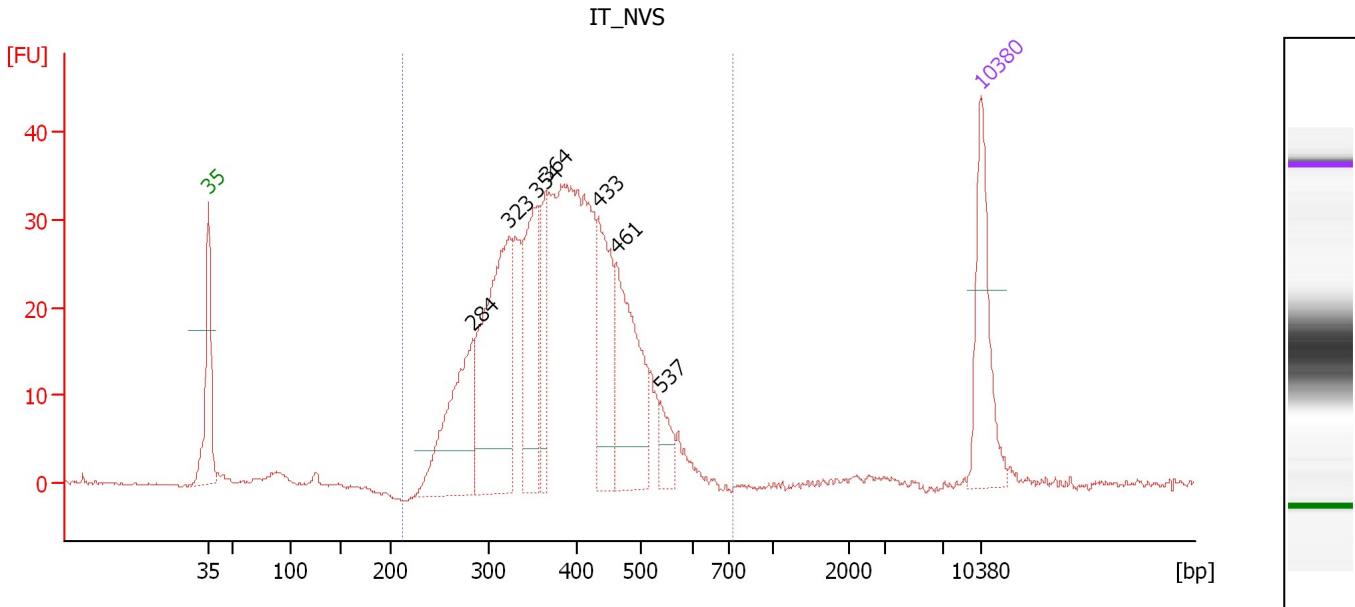
Region table for sample 9 : 8-KOB mRNA Lib 1:12

From [bp]	To [bp]	Average Size [bp]	Molarity [pmol/l]	Conc. [pg/μl]	Co Corr. lor Area	% of Total	Size distribution in CV [%]
223	871	399	6,880.3	1,665.62	892.4	96	26.0

Assay Class: High Sensitivity DNA Assay
 Data Path: C:\...ents and Settings\Bioanalyzer\2014-02-19\2014-02-19_009.xad

Created: 2/19/2014 5:36:58 PM
 Modified: 2/19/2014 6:18:44 PM

Electropherogram Summary Continued ...



Overall Results for sample 10 : IT_NVS

Number of peaks found: 7 Corr. Area 1: 650.1
 Noise: 0.2

Peak table for sample 10 : IT_NVS

Peak	Aligned Migration Time [s]	Size [bp]	Conc. [pg/μl]	Molarity [pmol/l]	Observations
1	43.00	35	125.00	5,411.3	Lower Marker
2	66.93	284	155.87	832.5	
3	70.22	323	248.71	1,167.8	
4	72.78	354	131.39	561.8	
5	73.60	364	57.94	240.8	
6	78.39	433	109.17	381.9	
7	79.98	461	148.42	488.0	
8	83.95	537	24.85	70.2	
9	113.00	10,380	75.00	10.9	Upper Marker

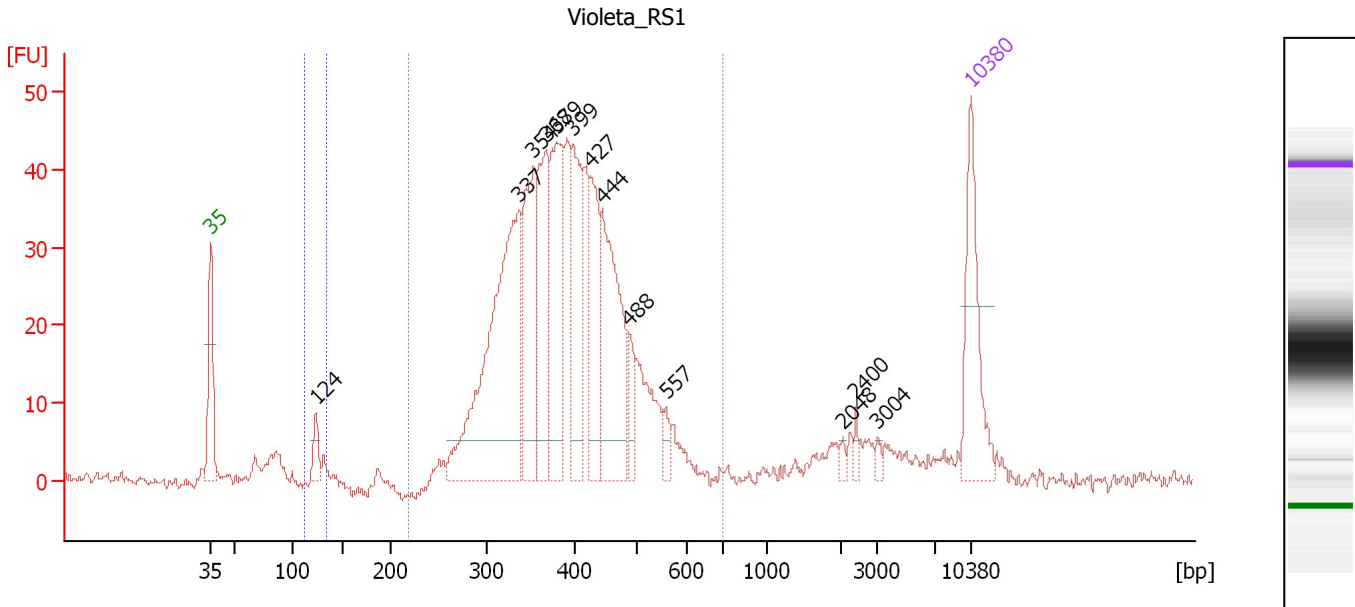
Region table for sample 10 : IT_NVS

From [bp]	To [bp]	Average Size [bp]	Molarity [pmol/l]	Conc. [pg/μl]	Co Corr. lor Area	% of Total	Size distribution in CV [%]
213	732	386	5,580.1	1,347.35	650.1	97	19.5

Assay Class: High Sensitivity DNA Assay
 Data Path: C:\...ents and Settings\Bioanalyzer\2014-02-19\2014-02-19_009.xad

Created: 2/19/2014 5:36:58 PM
 Modified: 2/19/2014 6:18:44 PM

Electropherogram Summary Continued ...



Overall Results for sample 11 : Violeta_RS1

Number of peaks found: 13 Corr. Area 1: 703.1
 Noise: 0.8 Corr. Area 2: 10.0

Peak table for sample 11 : Violeta_RS1

Peak	Aligned Migration Time [s]	Size [bp]	Conc. [pg/μl]	Molarity [pmol/l]	Observations
1	43.00	35	125.00	5,411.3	Lower Marker
2	52.68	124	22.32	272.7	
3	71.39	337	334.53	1,503.1	
4	72.72	354	137.03	587.2	
5	73.85	368	123.17	507.7	
6	74.78	379	141.10	564.0	
7	76.35	399	111.06	422.3	
8	78.02	427	88.54	314.3	
9	79.01	444	163.69	558.7	
10	81.56	488	26.14	81.1	
11	84.90	557	12.23	33.3	
12	101.21	2,048	4.01	3.0	
13	102.39	2,400	6.06	3.8	
14	104.40	3,004	4.02	2.0	
15	113.00	10,380	75.00	10.9	Upper Marker

Region table for sample 11 : Violeta_RS1

From [bp]	To [bp]	Average Size [bp]	Molarity [pmol/l]	Conc. [pg/μl]	Co Corr. lor Area	% of Total	Size distribution in CV [%]
112	135	126	331.4	27.47	10.0	1	3.1
220	700	395	5,601.3	1,404.32	703.1	88	17.7

Assay Class: High Sensitivity DNA Assay
Data Path: C:\...ents and Settings\Bioanalyzer\2014-02-19\2014-02-19_009.xad

Created: 2/19/2014 5:36:58 PM
Modified: 2/19/2014 6:18:44 PM

Gel Image

