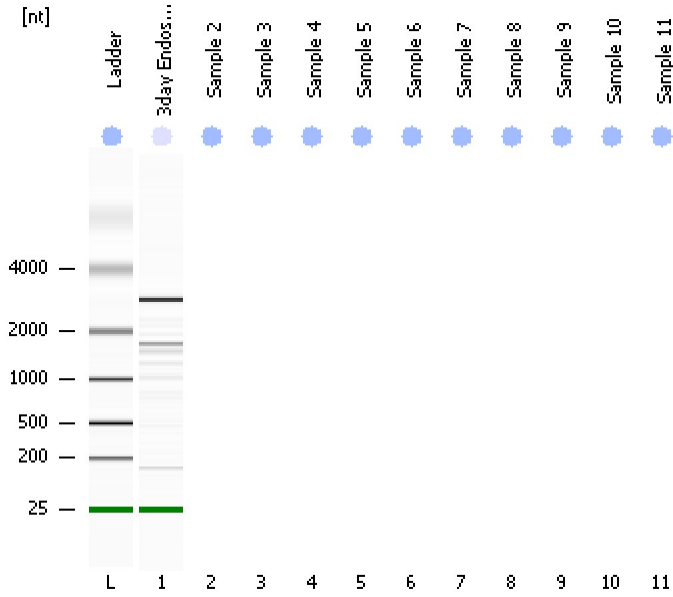


Assay Class: Eukaryote Total RNA Pico
Data Path: C:\...ents and Settings\Bioanalyzer\2014-02-20\2014-02-20_006.xad

Created: 2/20/2014 4:38:03 PM
Modified: 2/20/2014 4:56:08 PM

Electrophoresis File Run Summary



Instrument Information:

Instrument Name: DE13701086 Firmware: C.01.069
Serial#: DE13701086 Type: G2938B

Assay Information:

Assay Origin Path: C:\Program Files\Agilent\2100 bioanalyzer\2100 expert\assays\RNA\Eukaryote Total RNA Pico Series II.xsy

Assay Class: Eukaryote Total RNA Pico

Version: 2.6

Assay Comments: Total RNA Analysis pg sensitivity (Eukaryote)

© Copyright 2003 - 2009 Agilent Technologies, Inc.

Chip Information:

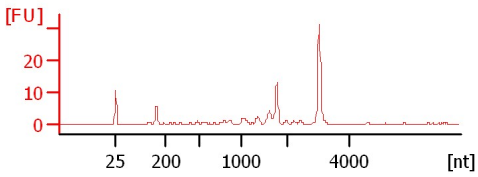
Chip Lot #:

Reagent Kit Lot #:

Chip Comments:

3day Endosperm

RIN: 7.90



Assay Class: Eukaryote Total RNA Pico
 Data Path: C:\...ents and Settings\Bioanalyzer\2014-02-20\2014-02-20_006.xad

Created: 2/20/2014 4:38:03 PM
 Modified: 2/20/2014 4:56:08 PM

Electrophoresis File Run Summary (Chip Summary)

Sample Name	Sample Comment	Status	Result Label	Result Color
3day Endosperm		✓	RIN: 7.90	
Sample 2				
Sample 3				
Sample 4				
Sample 5				
Sample 6				
Sample 7				
Sample 8				
Sample 9				
Sample 10				
Sample 11				
Ladder		✓	All Other Samples	

Chip Lot #

Reagent Kit Lot #

Chip Comments :

Assay Class: Eukaryote Total RNA Pico
Data Path: C:\...ents and Settings\Bioanalyzer\2014-02-20\2014-02-20_006.xad

Created: 2/20/2014 4:38:03 PM
Modified: 2/20/2014 4:56:08 PM

Electrophoresis Assay Details

General Analysis Settings

Number of Available Sample and Ladder Wells (Max.) : 12

Minimum Visible Range [s] : 17

Maximum Visible Range [s] : 70

Start Analysis Time Range [s] : 18

End Analysis Time Range [s] : 69

Ladder Concentration [pg/ μ l] : 1000

Lower Marker Concentration [pg/ μ l] : 0

Upper Marker Concentration [pg/ μ l] : 0

Used Lower Marker for Quantitation

Standard Curve Fit is Logarithmic

Show Data Aligned to Lower Marker

Integrator Settings

Integration Start Time [s] : 18

Integration End Time [s] : 69

Slope Threshold : 0.6

Height Threshold [FU] : 0.5

Area Threshold : 0.2

Width Threshold [s] : 0.3

Baseline Plateau [s] : 6

Filter Settings

Filter Width [s] : 0.5

Polynomial Order : 4

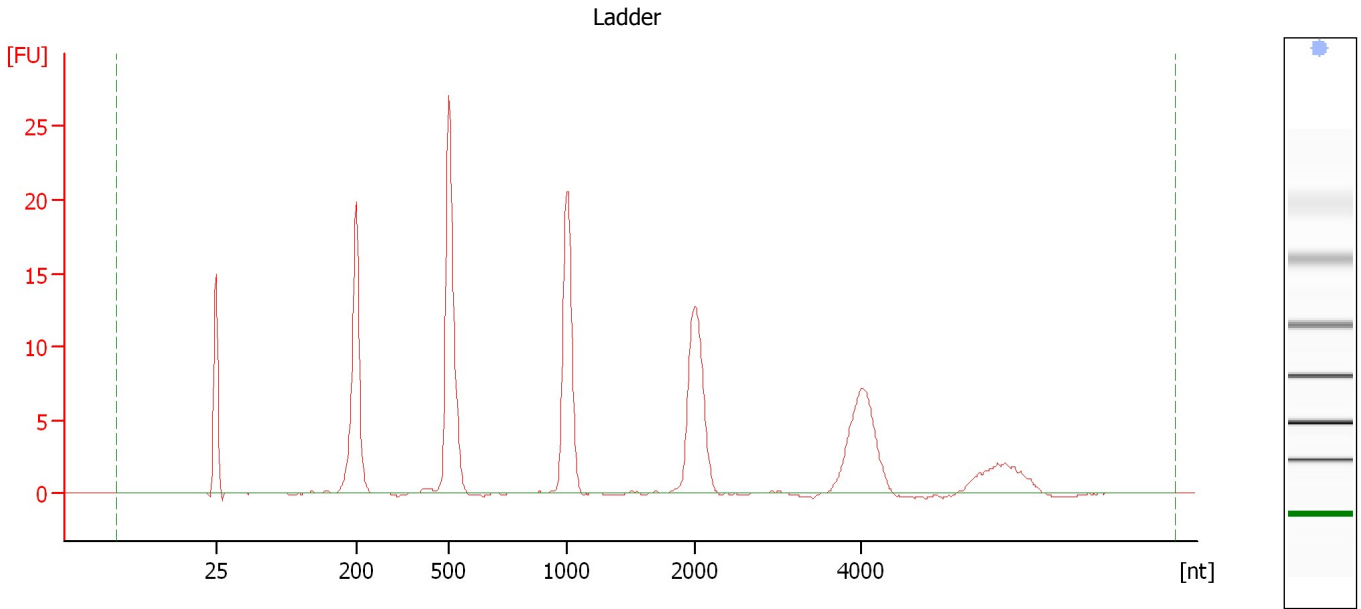
Ladder

Ladder Peak	Size
1	25
2	200
3	500
4	1000
5	2000
6	4000

Assay Class: Eukaryote Total RNA Pico
Data Path: C:\...ents and Settings\Bioanalyzer\2014-02-20\2014-02-20_006.xad

Created: 2/20/2014 4:38:03 PM
Modified: 2/20/2014 4:56:08 PM

Electropherogram Summary



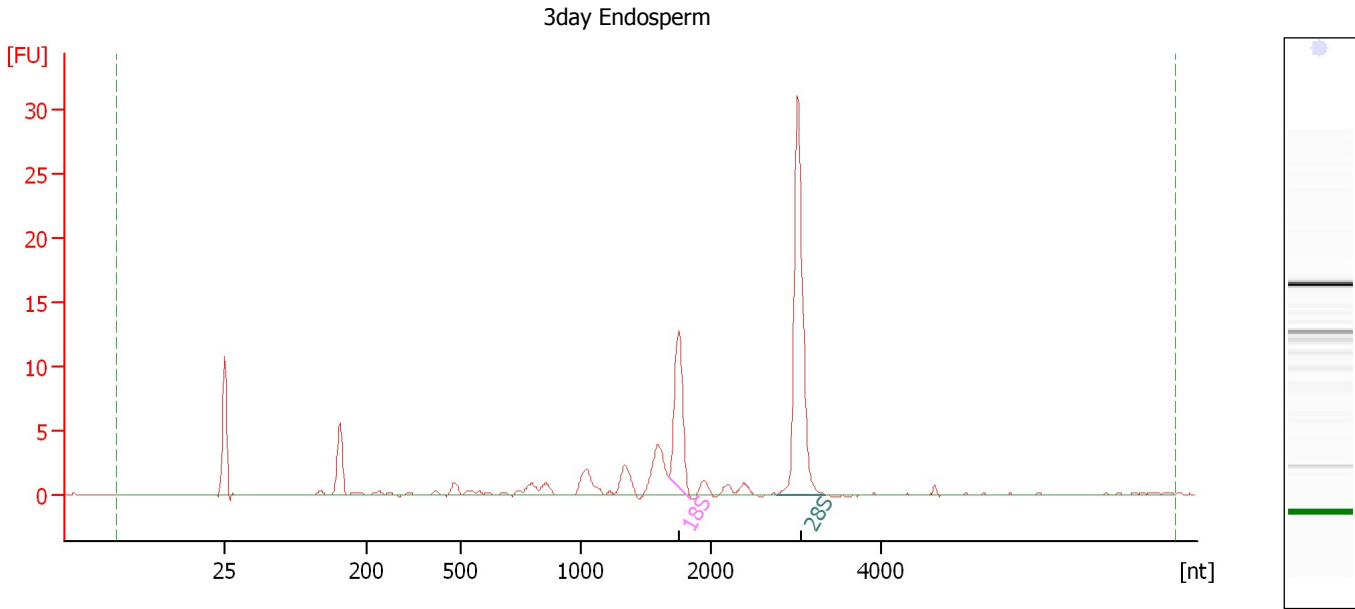
Overall Results for Ladder

RNA Area:	135.1	Result Flagging Color:	
RNA Concentration:	1,000 pg/μl	Result Flagging Label:	All Other Samples

Assay Class: Eukaryote Total RNA Pico
Data Path: C:\...ents and Settings\Bioanalyzer\2014-02-20\2014-02-20_006.xad

Created: 2/20/2014 4:38:03 PM
Modified: 2/20/2014 4:56:08 PM

Electropherogram Summary Continued ...



Setpoint Deviations for sample 1 : 3day Endosperm

Height Threshold [FU] : 5

Overall Results for sample 1 : 3day Endosperm

RNA Area: 67.1 RNA Integrity Number (RIN): 7.9 (B.02.08)
RNA Concentration: 496 pg/μl Result Flagging Color:
rRNA Ratio [28s / 18s]: 2.5 Result Flagging Label: RIN: 7.90

Fragment table for sample 1 : 3day Endosperm

Name	Start Size [nt]	End Size [nt]	Area	% of total Area
18S	1,668	1,848	11.5	17.2
28S	2,764	3,344	28.3	42.2

Assay Class: Eukaryote Total RNA Pico
Data Path: C:\...ents and Settings\Bioanalyzer\2014-02-20\2014-02-20_006.xad

Created: 2/20/2014 4:38:03 PM
Modified: 2/20/2014 4:56:08 PM

Gel Image

