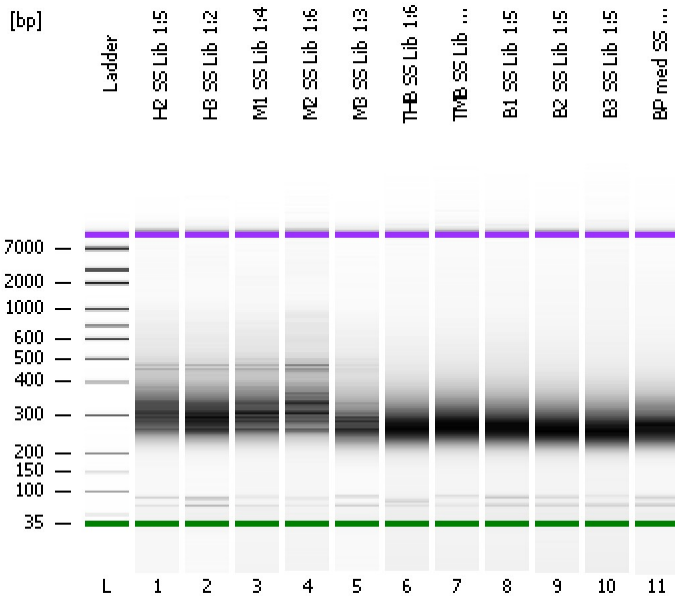


Assay Class: High Sensitivity DNA Assay
Data Path: C:\...ents and Settings\Bioanalyzer\2014-02-21\2014-02-21_003.xad

Created: 2/21/2014 12:50:15 PM
Modified: 2/21/2014 1:36:56 PM

Electrophoresis File Run Summary



Instrument Information:

Instrument Name: DE13701086 Firmware: C.01.069
Serial#: DE13701086 Type: G2938B

Assay Information:

Assay Origin Path: C:\Program Files\Agilent\2100 bioanalyzer\2100 expert\assays\dsDNA\High Sensitivity DNA.xsy
Assay Class: High Sensitivity DNA Assay
Version: 1.03
Assay Comments: Copyright © 2003-2010 Agilent Technologies

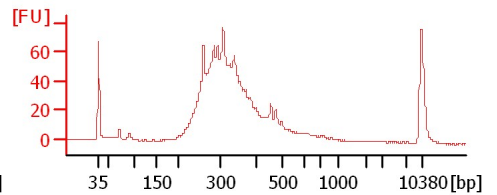
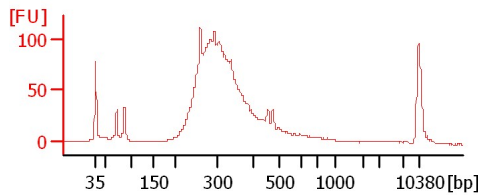
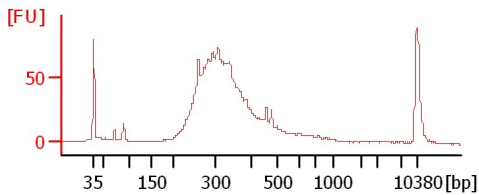
Chip Information:

Chip Lot #:
Reagent Kit Lot #:
Chip Comments:

H2 SS Lib 1:5

H3 SS Lib 1:2

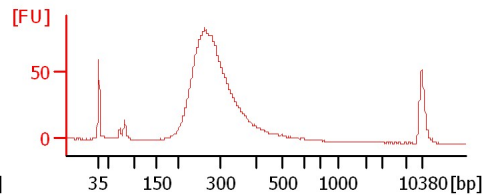
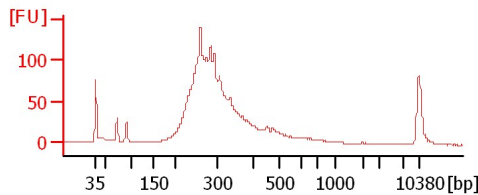
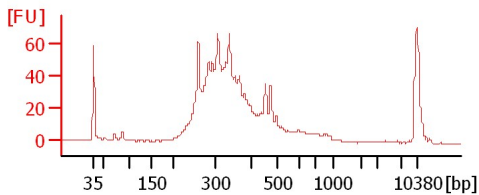
M1 SS Lib 1:4



M2 SS Lib 1:6

M3 SS Lib 1:3

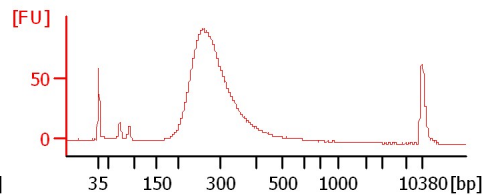
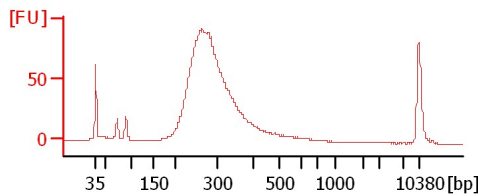
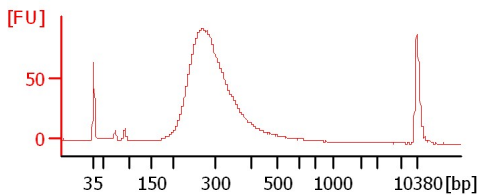
THB SS Lib 1:6



TMB SS Lib 1:7

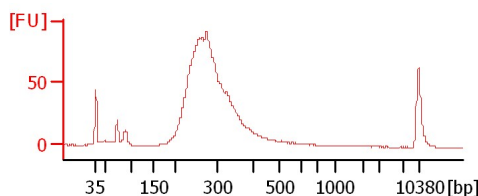
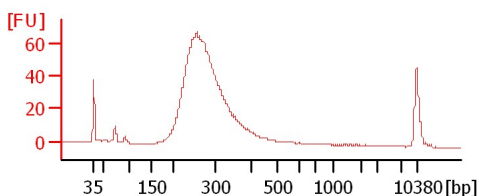
B1 SS Lib 1:5

B2 SS Lib 1:5



B3 SS Lib 1:5

BP med SS Lib 1:4



Assay Class: High Sensitivity DNA Assay
 Data Path: C:\...ents and Settings\Bioanalyzer\2014-02-21\2014-02-21_003.xad

Created: 2/21/2014 12:50:15 PM
 Modified: 2/21/2014 1:36:56 PM

Electrophoresis File Run Summary (Chip Summary)

Sample Name	Sample Comment	Rest. Digest	Status	Observation	Result Label	Result Color
H2 SS Lib 1:5		<input type="checkbox"/>	✓			
H3 SS Lib 1:2		<input type="checkbox"/>	✓			
M1 SS Lib 1:4		<input type="checkbox"/>	✓			
M2 SS Lib 1:6		<input type="checkbox"/>	✓			
M3 SS Lib 1:3		<input type="checkbox"/>	✓			
THB SS Lib 1:6		<input type="checkbox"/>	✓			
TMB SS Lib 1:7		<input type="checkbox"/>	✓			
B1 SS Lib 1:5		<input type="checkbox"/>	✓			
B2 SS Lib 1:5		<input type="checkbox"/>	✓			
B3 SS Lib 1:5		<input type="checkbox"/>	✓			
BP med SS Lib 1:4		<input type="checkbox"/>	✓			
Ladder		<input type="checkbox"/>	✓			

Chip Lot #

Reagent Kit Lot #

Chip Comments :

Assay Class: High Sensitivity DNA Assay
Data Path: C:\...ents and Settings\Bioanalyzer\2014-02-21\2014-02-21_003.xad

Created: 2/21/2014 12:50:15 PM
Modified: 2/21/2014 1:36:56 PM

Electrophoresis Assay Details

General Analysis Settings

Number of Available Sample and Ladder Wells (Max.) : 12
Minimum Visible Range [s] : 32
Maximum Visible Range [s] : 138
Start Analysis Time Range [s] : 33
End Analysis Time Range [s] : 137.5
Ladder Concentration [pg/μl] : 1950
Uses Standard Area for Ladder Fragments
Lower Marker Concentration [pg/μl] : 125
Upper Marker Concentration [pg/μl] : 75
Used Upper Marker for Quantitation
Standard Curve Fit is Point to Point
Show Data Aligned to Lower and Upper Marker

Integrator Settings

Integration Start Time [s] : 33.05
Integration End Time [s] : 137
Slope Threshold : 0.8
Height Threshold [FU] : 5
Area Threshold : 0.1
Width Threshold [s] : 0.6
Baseline Plateau [s] : 0.5

Filter Settings

Filter Width [s] : 0.5
Polynomial Order : 4

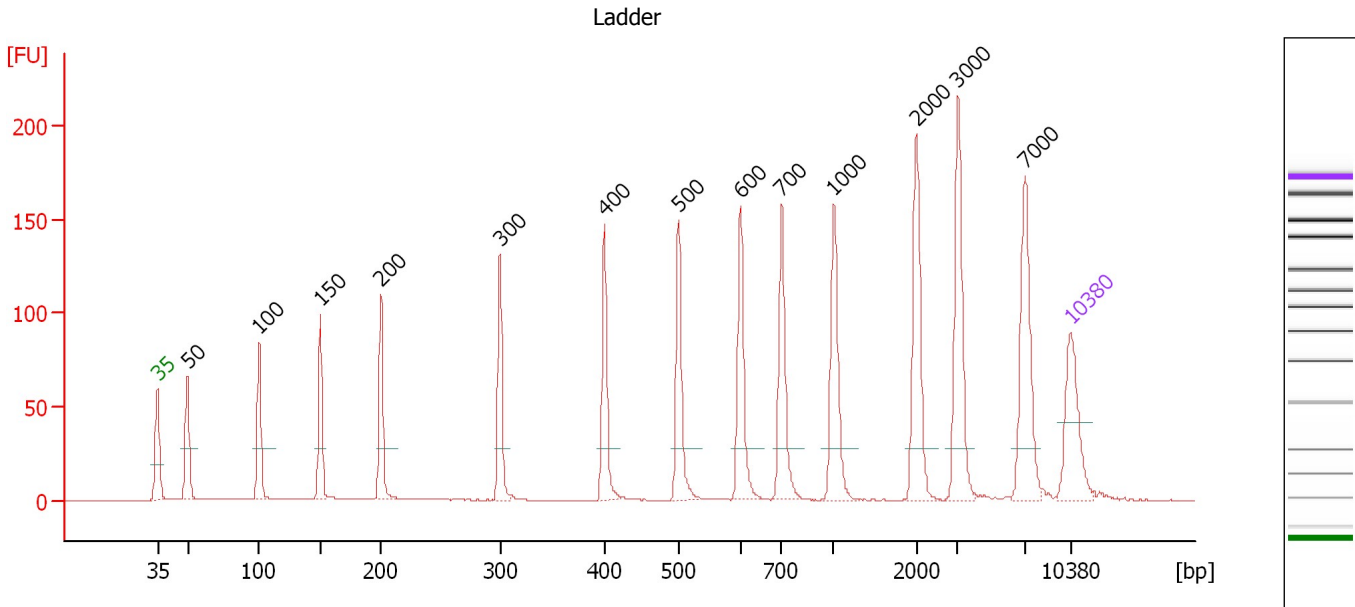
Ladder

Ladder Peak	Size	Area
1	35	160
2	50	210
3	100	208
4	150	221
5	200	242
6	300	270
7	400	305
8	500	306
9	600	336
10	700	321
11	1000	366
12	2000	413
13	3000	411
14	7000	400
15	10380	214

Assay Class: High Sensitivity DNA Assay
 Data Path: C:\...ents and Settings\Bioanalyzer\2014-02-21\2014-02-21_003.xad

Created: 2/21/2014 12:50:15 PM
 Modified: 2/21/2014 1:36:56 PM

Electropherogram Summary



Overall Results for Ladder

Noise: 0.1

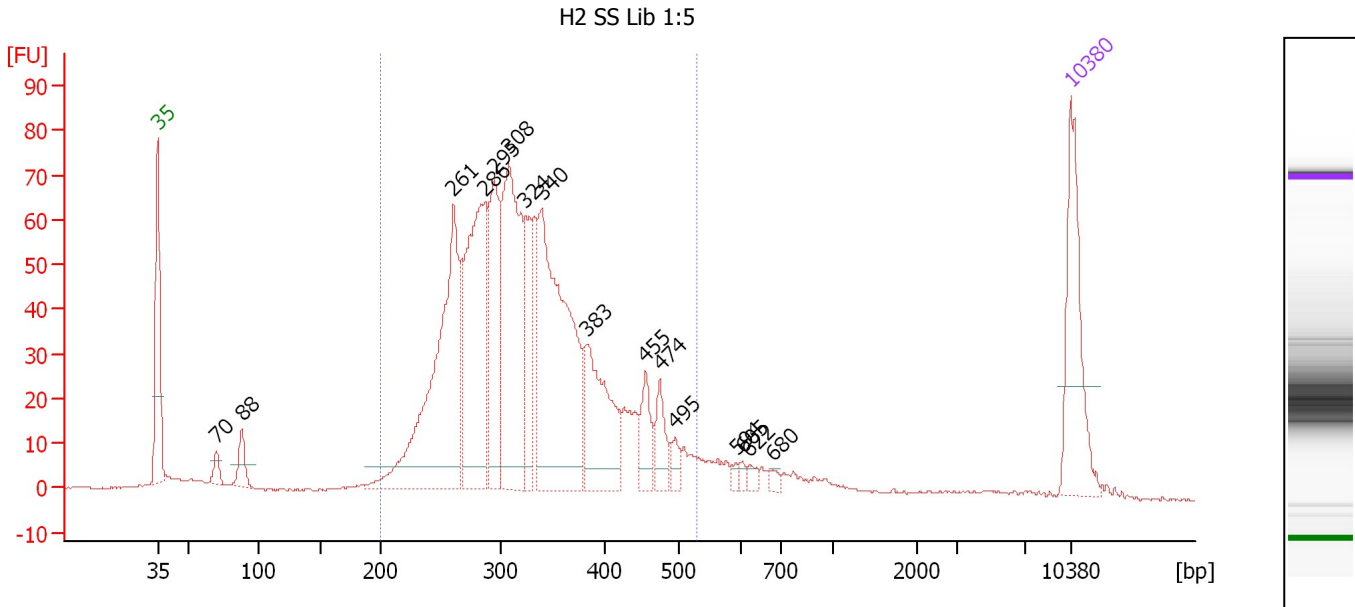
Peak table for Ladder

Peak	Aligned Migration Time [s]	Size [bp]	Conc. [pg/μl]	Molarity [pmol/l]	Observations
1	43.00	35	125.00	5,411.3	Lower Marker
2	45.31	50	150.00	4,545.5	Ladder Peak
3	50.79	100	150.00	2,272.7	Ladder Peak
4	55.49	150	150.00	1,515.2	Ladder Peak
5	60.14	200	150.00	1,136.4	Ladder Peak
6	69.28	300	150.00	757.6	Ladder Peak
7	77.28	400	150.00	568.2	Ladder Peak
8	82.98	500	150.00	454.5	Ladder Peak
9	87.68	600	150.00	378.8	Ladder Peak
10	90.86	700	150.00	324.7	Ladder Peak
11	94.86	1,000	150.00	227.3	Ladder Peak
12	101.17	2,000	150.00	113.6	Ladder Peak
13	104.39	3,000	150.00	75.8	Ladder Peak
14	109.52	7,000	150.00	32.5	Ladder Peak
15	113.00	10,380	75.00	10.9	Upper Marker

Assay Class: High Sensitivity DNA Assay
 Data Path: C:\...ents and Settings\Bioanalyzer\2014-02-21\2014-02-21_003.xad

Created: 2/21/2014 12:50:15 PM
 Modified: 2/21/2014 1:36:56 PM

Electropherogram Summary Continued ...



Overall Results for sample 1 : H2 SS Lib 1:5

Number of peaks found: 16 Corr. Area 1: 1,253.2
 Noise: 0.2

Peak table for sample 1 : H2 SS Lib 1:5

Peak	Aligned Migration Time [s]	Size [bp]	Conc. [pg/μl]	Molarity [pmol/l]	Observations
1	43.00	35	125.00	5,411.3	Lower Marker
2	47.52	70	12.15	262.2	
3	49.48	88	25.47	438.3	
4	65.70	261	276.42	1,605.9	
5	68.04	286	218.85	1,157.4	
6	68.83	295	114.69	588.9	
7	69.96	308	225.74	1,108.7	
8	71.17	324	60.69	284.1	
9	72.48	340	266.01	1,185.5	
10	75.96	383	106.25	419.9	
11	80.43	455	32.05	106.7	
12	81.52	474	27.97	89.3	
13	82.70	495	12.14	37.1	
14	87.39	594	4.08	10.4	
15	87.83	605	4.12	10.3	
16	88.39	622	5.85	14.2	
17	90.22	680	4.40	9.8	
18	113.00	10,380	75.00	10.9	Upper Marker

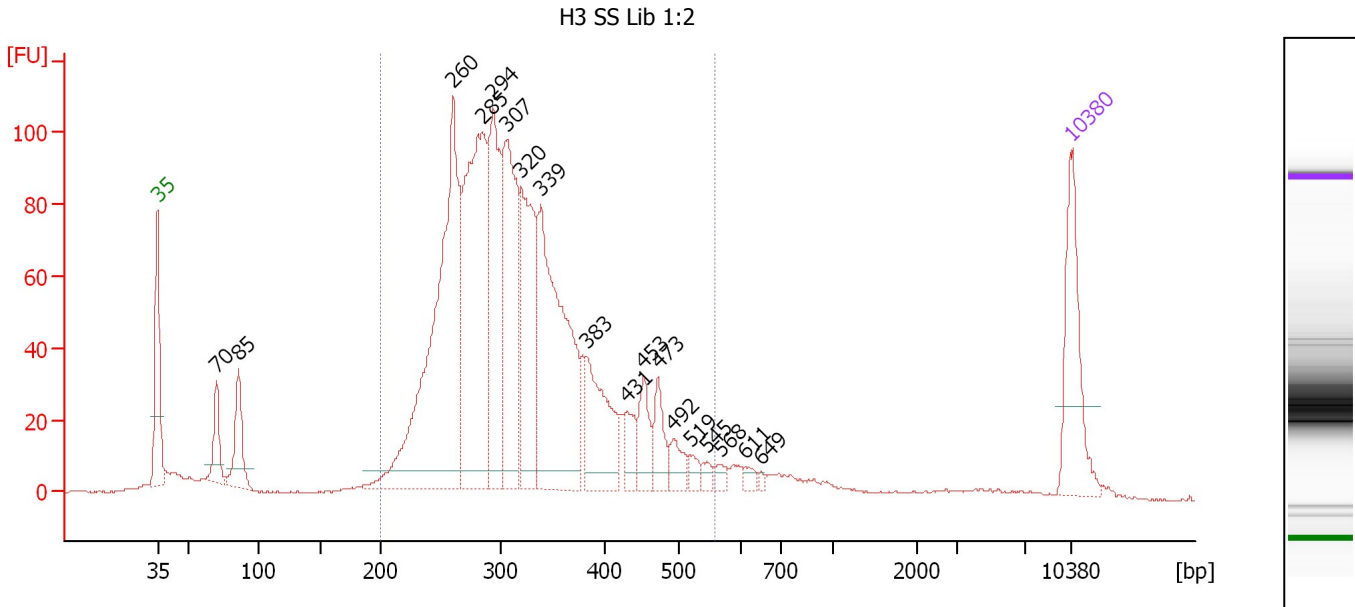
Region table for sample 1 : H2 SS Lib 1:5

From [bp]	To [bp]	Average Size [bp]	Molarity [pmol/l]	Conc. [pg/μl]	Co Corr. lor Area	% of Total	Size distribution in CV [%]
200	530	329	7,284.6	1,502.64	1,253.2	88	20.2

Assay Class: High Sensitivity DNA Assay
 Data Path: C:\...ents and Settings\Bioanalyzer\2014-02-21\2014-02-21_003.xad

Created: 2/21/2014 12:50:15 PM
 Modified: 2/21/2014 1:36:56 PM

Electropherogram Summary Continued ...



Overall Results for sample 2 : H3 SS Lib 1:2

Number of peaks found: 18 Corr. Area 1: 1,783.3
 Noise: 0.2

Peak table for sample 2 : H3 SS Lib 1:2

Peak	Aligned Migration Time [s]	Size [bp]	Conc. [pg/μl]	Molarity [pmol/l]	Observations
1	43.00	35	125.00	5,411.3	Lower Marker
2	47.52	70	45.53	982.1	
3	49.18	85	65.17	1,157.4	
4	65.67	260	446.56	2,597.6	
5	67.89	285	325.12	1,729.9	
6	68.76	294	182.87	941.5	
7	69.84	307	196.45	969.3	
8	70.89	320	166.17	786.5	
9	72.41	339	275.23	1,229.7	
10	75.93	383	99.31	392.7	
11	79.02	431	27.13	95.5	
12	80.28	453	36.77	123.1	
13	81.42	473	32.68	104.8	
14	82.55	492	20.87	64.2	
15	83.85	519	9.38	27.4	
16	85.11	545	7.93	22.0	
17	86.16	568	7.09	18.9	
18	88.03	611	7.21	17.9	
19	89.25	649	3.03	7.1	
20	113.00	10,380	75.00	10.9	Upper Marker

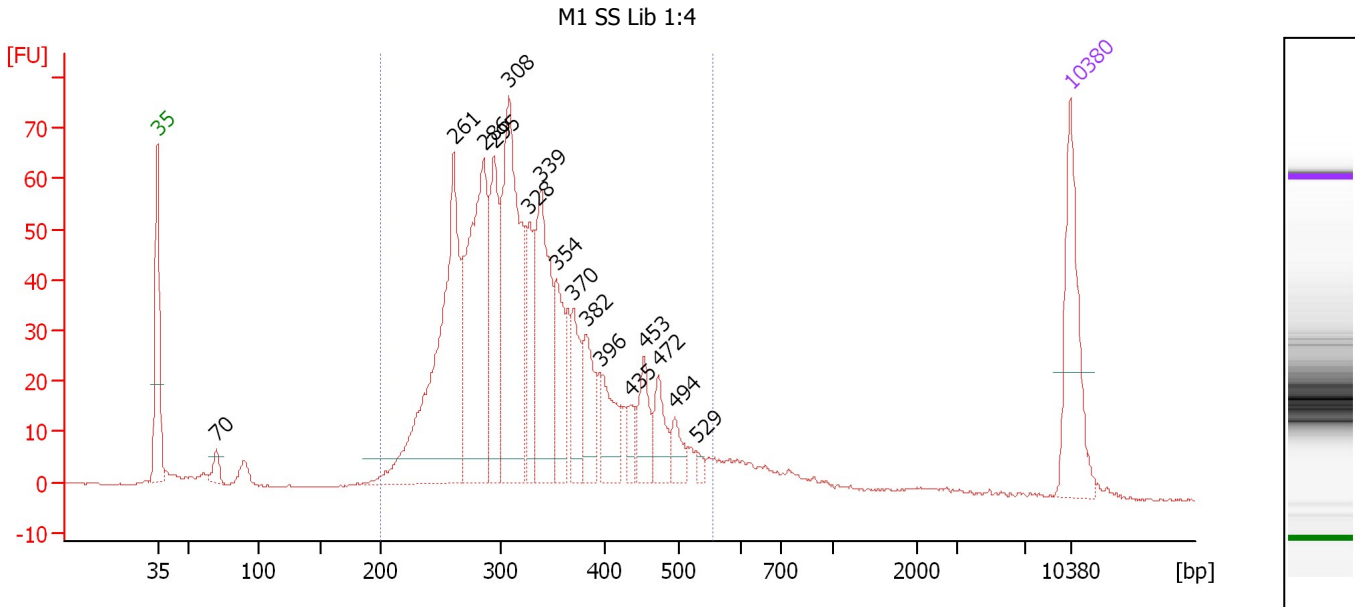
Region table for sample 2 : H3 SS Lib 1:2

From [bp]	To [bp]	Average Size [bp]	Molarity [pmol/l]	Conc. [pg/μl]	Co Corr. lor Area	% of Total	Size distribution in CV [%]
200	560	324	9,620.0	1,944.68	1,783.3	86	21.5

Assay Class: High Sensitivity DNA Assay
 Data Path: C:\...ents and Settings\Bioanalyzer\2014-02-21\2014-02-21_003.xad

Created: 2/21/2014 12:50:15 PM
 Modified: 2/21/2014 1:36:56 PM

Electropherogram Summary Continued ...



Overall Results for sample 3 : M1 SS Lib 1:4

Number of peaks found: 16 Corr. Area 1: 1,140.0
 Noise: 0.2

Peak table for sample 3 : M1 SS Lib 1:4

Peak	Aligned Migration Time [s]	Size [bp]	Conc. [pg/μl]	Molarity [pmol/l]	Observations
1	43.00	35	125.00	5,411.3	Lower Marker
2	47.50	70	14.99	324.4	
3	65.72	261	314.20	1,823.8	
4	68.01	286	250.87	1,328.5	
5	68.80	295	111.13	571.1	
6	69.95	308	256.77	1,261.5	
7	71.49	328	64.00	295.9	
8	72.42	339	146.54	654.4	
9	73.57	354	66.57	285.3	
10	74.89	370	48.15	197.1	
11	75.86	382	51.22	203.0	
12	76.96	396	47.71	182.6	
13	79.30	435	15.75	54.8	
14	80.32	453	36.90	123.3	
15	81.37	472	32.76	105.2	
16	82.65	494	19.87	60.9	
17	84.33	529	5.79	16.6	
18	113.00	10,380	75.00	10.9	Upper Marker

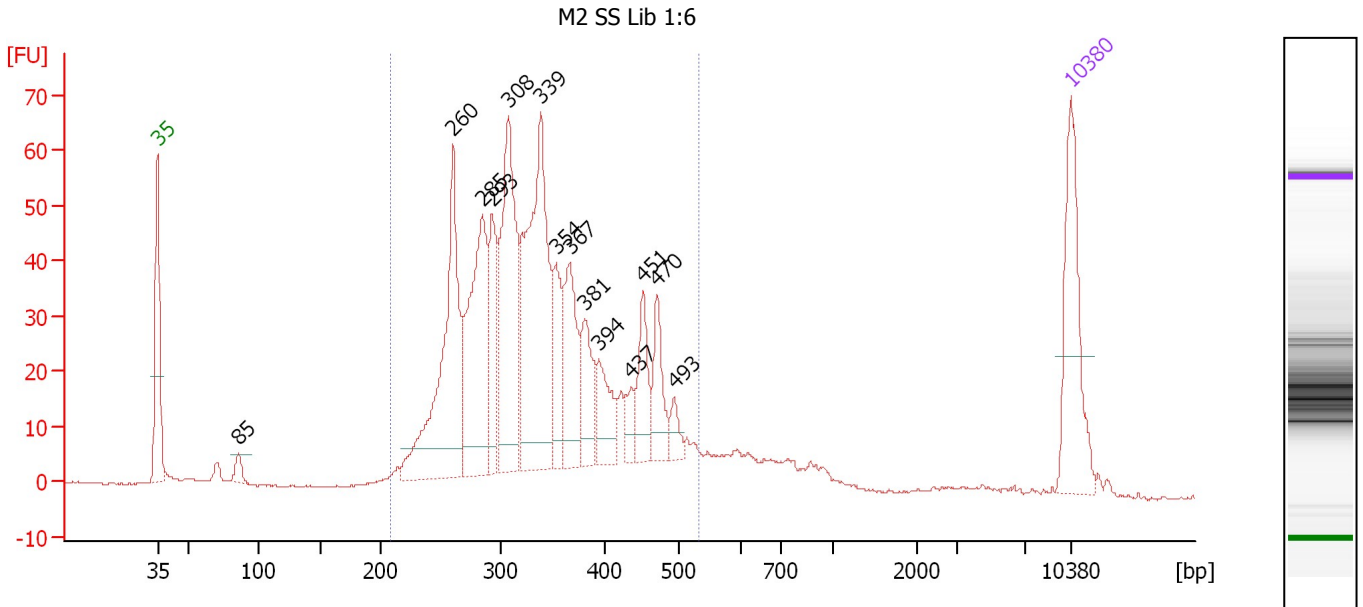
Region table for sample 3 : M1 SS Lib 1:4

From [bp]	To [bp]	Average Size [bp]	Molarity [pmol/l]	Conc. [pg/μl]	Co Corr. lor Area	% of Total	Size distribution in CV [%]
200	554	331	7,787.6	1,610.85	1,140.0	91	21.2

Assay Class: High Sensitivity DNA Assay
 Data Path: C:\...ents and Settings\Bioanalyzer\2014-02-21\2014-02-21_003.xad

Created: 2/21/2014 12:50:15 PM
 Modified: 2/21/2014 1:36:56 PM

Electropherogram Summary Continued ...



Overall Results for sample 4 : M2 SS Lib 1:6

Number of peaks found: 14 Corr. Area 1: 990.3
 Noise: 0.2

Peak table for sample 4 : M2 SS Lib 1:6

Peak	Aligned Migration Time [s]	Size [bp]	Conc. [pg/μl]	Molarity [pmol/l]	Observations
1	43.00	35	125.00	5,411.3	Lower Marker
2	49.18	85	12.84	227.9	
3	65.66	260	207.53	1,207.4	
4	67.90	285	163.71	870.5	
5	68.66	293	69.77	360.5	
6	69.92	308	178.59	878.6	
7	72.38	339	229.09	1,024.6	
8	73.59	354	51.22	219.3	
9	74.62	367	74.06	306.0	
10	75.74	381	48.27	192.1	
11	76.81	394	40.78	156.8	
12	79.37	437	18.33	63.6	
13	80.22	451	41.33	138.7	
14	81.29	470	39.17	126.2	
15	82.59	493	13.58	41.7	
16	113.00	10,380	75.00	10.9	Upper Marker

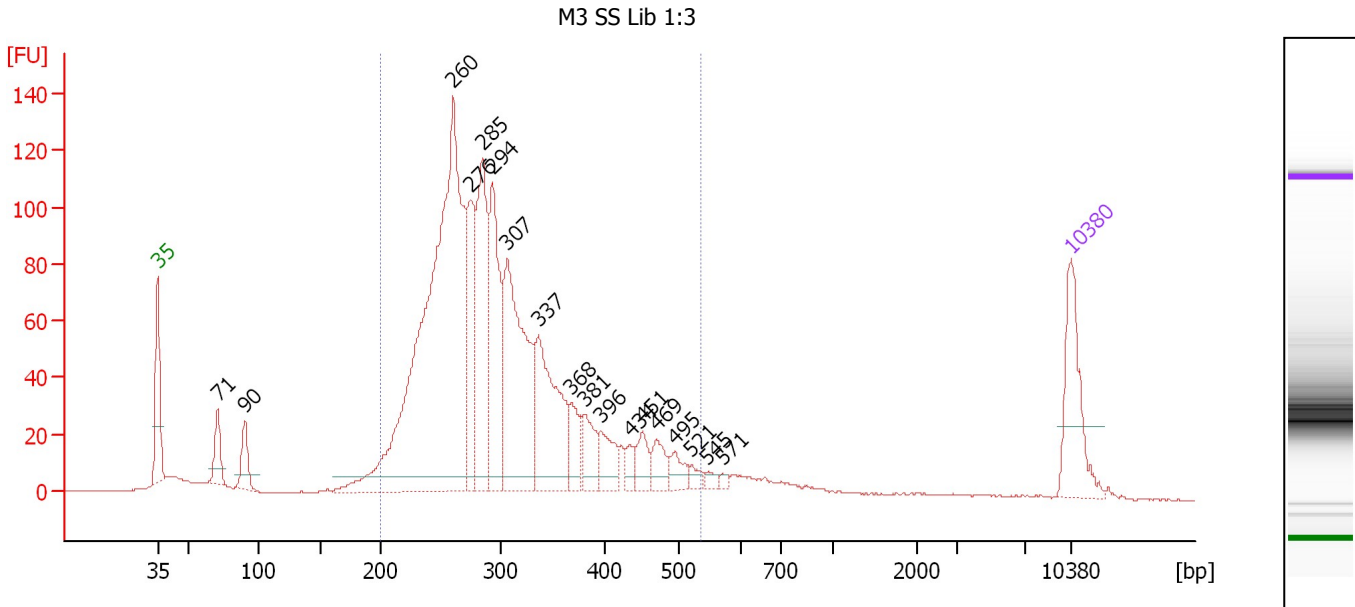
Region table for sample 4 : M2 SS Lib 1:6

From [bp]	To [bp]	Average Size [bp]	Molarity [pmol/l]	Conc. [pg/μl]	Co Corr. lor Area	% of Total	Size distribution in CV [%]
209	533	341	6,472.5	1,379.78	990.3	89	20.4

Assay Class: High Sensitivity DNA Assay
 Data Path: C:\...ents and Settings\Bioanalyzer\2014-02-21\2014-02-21_003.xad

Created: 2/21/2014 12:50:15 PM
 Modified: 2/21/2014 1:36:56 PM

Electropherogram Summary Continued ...



Overall Results for sample 5 : M3 SS Lib 1:3

Number of peaks found: 18 Corr. Area 1: 1,758.2
 Noise: 0.2

Peak table for sample 5 : M3 SS Lib 1:3

Peak	Aligned Migration Time [s]	Size [bp]	Conc. [pg/μl]	Molarity [pmol/l]	Observations
1	43.00	35	125.00	5,411.3	Lower Marker
2	47.60	71	43.25	923.6	
3	49.70	90	43.22	726.9	
4	65.65	260	862.12	5,018.3	
5	67.06	276	122.02	670.5	
6	67.93	285	198.03	1,051.9	
7	68.70	294	180.26	929.9	
8	69.84	307	263.07	1,298.1	
9	72.21	337	175.61	790.3	
10	74.72	368	39.92	164.4	
11	75.72	381	44.30	176.4	
12	77.00	396	38.50	147.1	
13	79.23	434	15.32	53.4	
14	80.19	451	27.34	91.8	
15	81.24	469	26.04	84.1	
16	82.69	495	20.95	64.1	
17	83.97	521	8.90	25.9	
18	85.11	545	7.31	20.3	
19	86.29	571	4.63	12.3	
20	113.00	10,380	75.00	10.9	Upper Marker

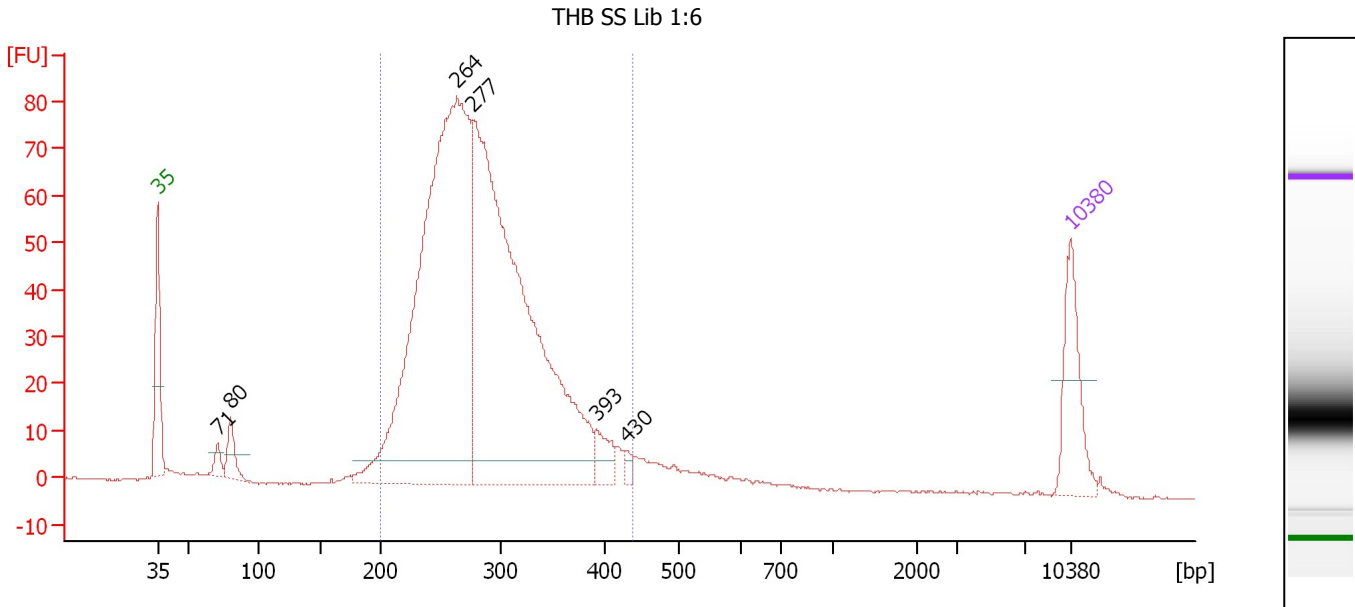
Region table for sample 5 : M3 SS Lib 1:3

From [bp]	To [bp]	Average Size [bp]	Molarity [pmol/l]	Conc. [pg/μl]	Co Corr. lor Area	% of Total	Size distribution in CV [%]
200	536	305	10,948.8	2,089.31	1,758.2	88	22.0

Assay Class: High Sensitivity DNA Assay
 Data Path: C:\...ents and Settings\Bioanalyzer\2014-02-21\2014-02-21_003.xad

Created: 2/21/2014 12:50:15 PM
 Modified: 2/21/2014 1:36:56 PM

Electropherogram Summary Continued ...



Overall Results for sample 6 : THB SS Lib 1:6

Number of peaks found: 6 Corr. Area 1: 1,154.9
 Noise: 0.2

Peak table for sample 6 : THB SS Lib 1:6

Peak	Aligned Migration Time [s]	Size [bp]	Conc. [pg/μl]	Molarity [pmol/l]	Observations
1	43.00	35	125.00	5,411.3	Lower Marker
2	47.60	71	20.52	438.3	
3	48.61	80	42.88	810.2	
4	65.97	264	1,066.19	6,124.9	
5	67.16	277	1,026.27	5,616.7	
6	76.69	393	34.37	132.6	
7	78.99	430	9.01	31.7	
8	113.00	10,380	75.00	10.9	Upper Marker

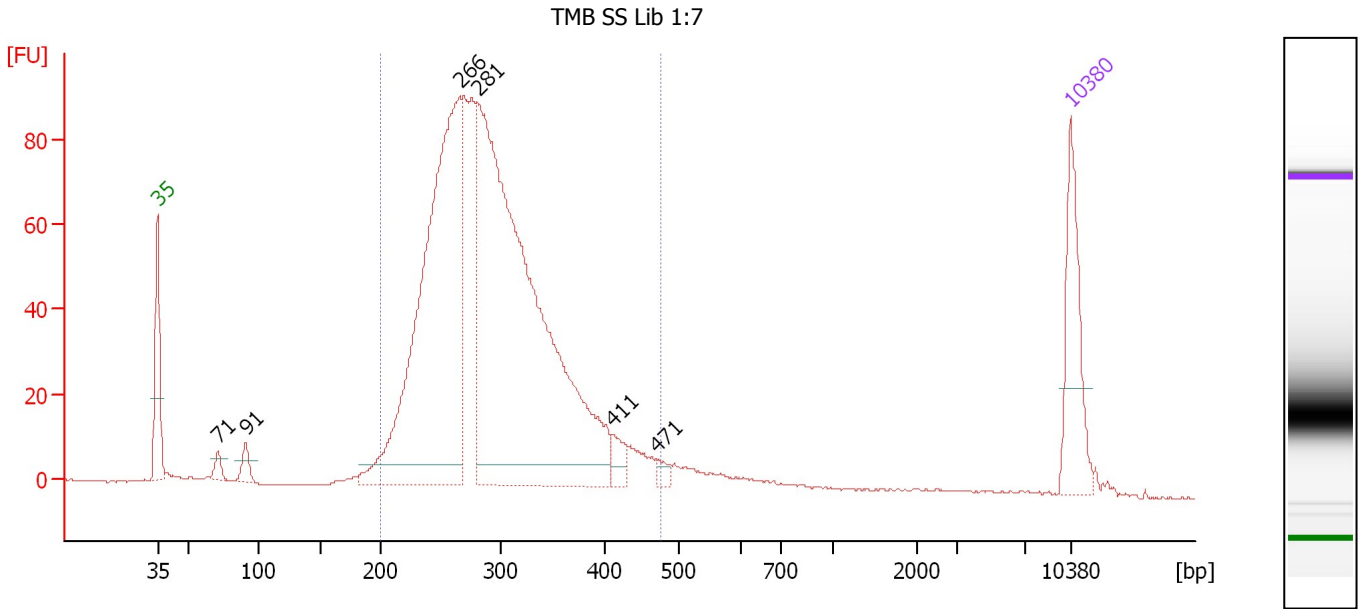
Region table for sample 6 : THB SS Lib 1:6

From [bp]	To [bp]	Average Size [bp]	Molarity [pmol/l]	Conc. [pg/μl]	Co Corr. lor Area	% of Total	Size distribution in CV [%]
200	438	287	11,366.7	2,093.94	1,154.9	91	16.4

Assay Class: High Sensitivity DNA Assay
 Data Path: C:\...ents and Settings\Bioanalyzer\2014-02-21\2014-02-21_003.xad

Created: 2/21/2014 12:50:15 PM
 Modified: 2/21/2014 1:36:56 PM

Electropherogram Summary Continued ...



Overall Results for sample 7 : TMB SS Lib 1:7

Number of peaks found: 6 Corr. Area 1: 1,355.5
 Noise: 0.1

Peak table for sample 7 : TMB SS Lib 1:7

Peak	Aligned Migration Time [s]	Size [bp]	Conc. [pg/μl]	Molarity [pmol/l]	Observations
1	43.00	35	125.00	5,411.3	Lower Marker
2	47.64	71	13.66	290.5	
3	49.75	91	19.87	332.7	
4	66.19	266	653.72	3,720.3	
5	67.55	281	916.04	4,937.3	
6	77.91	411	21.47	79.2	
7	81.33	471	8.92	28.7	
8	113.00	10,380	75.00	10.9	Upper Marker

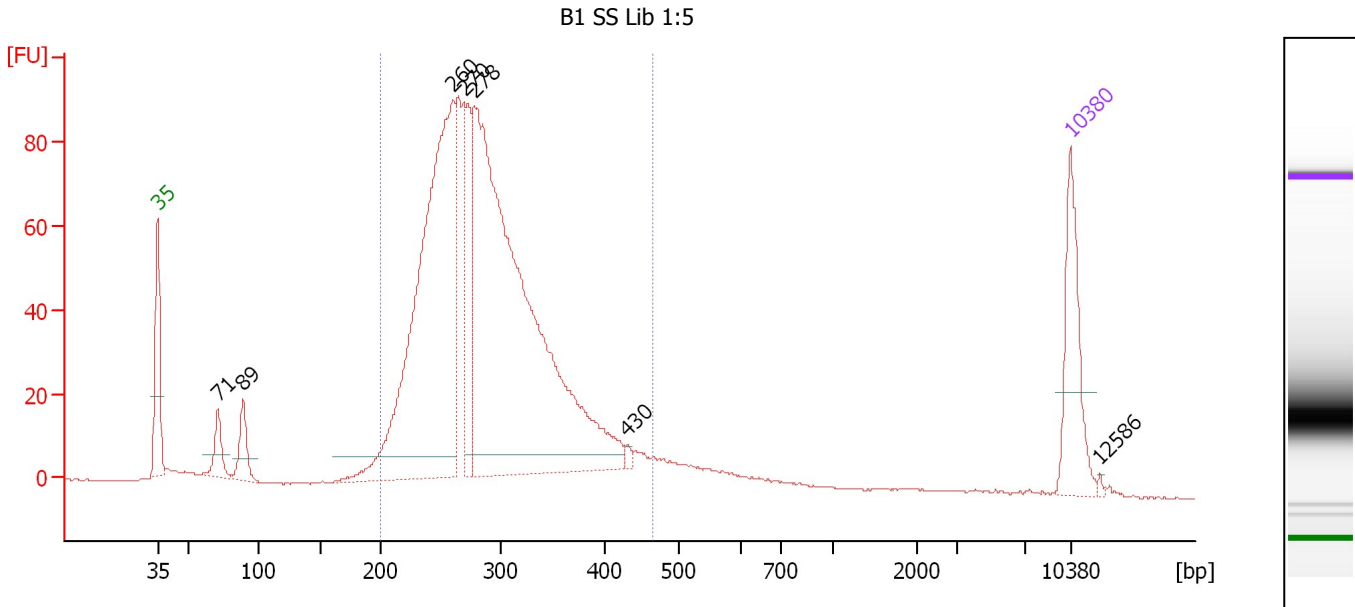
Region table for sample 7 : TMB SS Lib 1:7

From [bp]	To [bp]	Average Size [bp]	Molarity [pmol/l]	Conc. [pg/μl]	Co Corr. lor Area	% of Total	Size distribution in CV [%]
200	476	296	9,481.5	1,786.93	1,355.5	92	17.7

Assay Class: High Sensitivity DNA Assay
 Data Path: C:\...ents and Settings\Bioanalyzer\2014-02-21\2014-02-21_003.xad

Created: 2/21/2014 12:50:15 PM
 Modified: 2/21/2014 1:36:56 PM

Electropherogram Summary Continued ...



Overall Results for sample 8 : B1 SS Lib 1:5

Number of peaks found: 7 Corr. Area 1: 1,319.2
 Noise: 0.2

Peak table for sample 8 : B1 SS Lib 1:5

Peak	Aligned Migration Time [s]	Size [bp]	Conc. [pg/μl]	Molarity [pmol/l]	Observations
1	43.00	35	125.00	5,411.3	Lower Marker
2	47.64	71	36.85	783.3	
3	49.53	89	45.22	773.9	
4	65.62	260	630.44	3,673.8	
5	66.52	270	115.85	650.5	
6	67.28	278	879.51	4,791.1	
7	79.02	430	4.62	16.2	
8	113.00	10,380	75.00	10.9	Upper Marker
9	115.27	12,586	0.00	0.0	

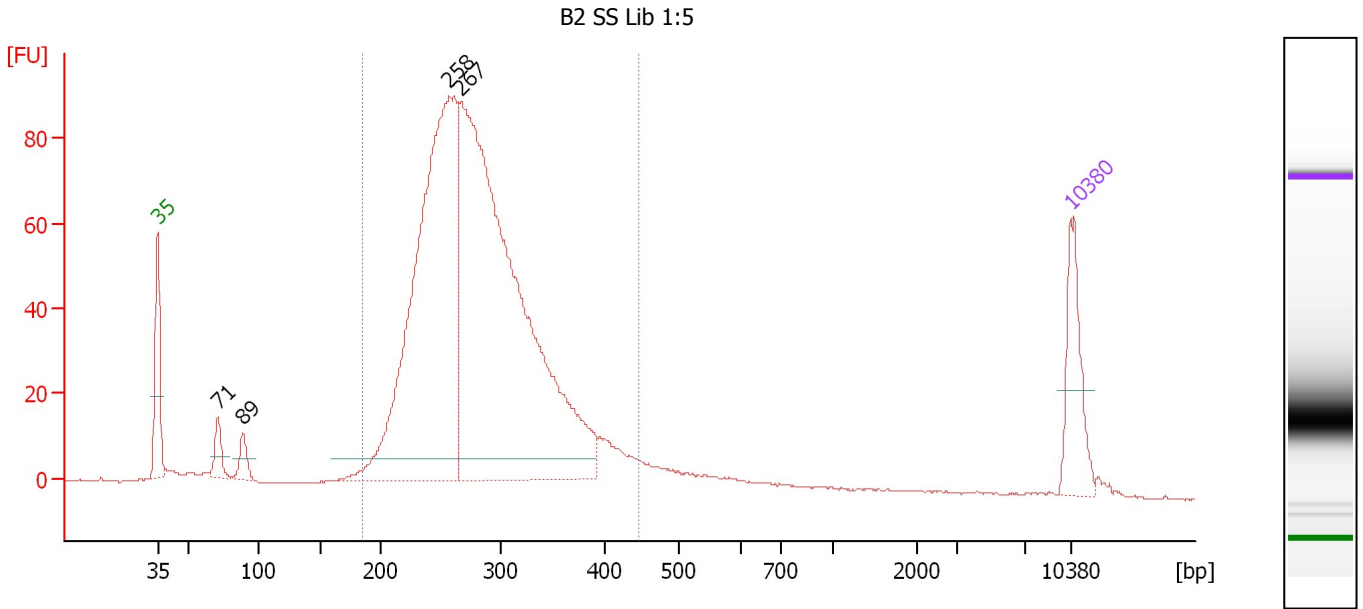
Region table for sample 8 : B1 SS Lib 1:5

From [bp]	To [bp]	Average Size [bp]	Molarity [pmol/l]	Conc. [pg/μl]	Co Corr. lor Area	% of Total	Size distribution in CV [%]
200	465	291	9,699.4	1,801.76	1,319.2	89	17.6

Assay Class: High Sensitivity DNA Assay
 Data Path: C:\...ents and Settings\Bioanalyzer\2014-02-21\2014-02-21_003.xad

Created: 2/21/2014 12:50:15 PM
 Modified: 2/21/2014 1:36:56 PM

Electropherogram Summary Continued ...



Overall Results for sample 9 : B2 SS Lib 1:5

Number of peaks found: 4 Corr. Area 1: 1,281.6
 Noise: 0.1

Peak table for sample 9 : B2 SS Lib 1:5

Peak	Aligned Migration Time [s]	Size [bp]	Conc. [pg/μl]	Molarity [pmol/l]	Observations
1	43.00	35	125.00	5,411.3	Lower Marker
2	47.62	71	37.45	797.7	
3	49.58	89	31.45	535.6	
4	65.40	258	894.09	5,260.5	
5	66.25	267	1,196.80	6,793.8	
6	113.00	10,380	75.00	10.9	Upper Marker

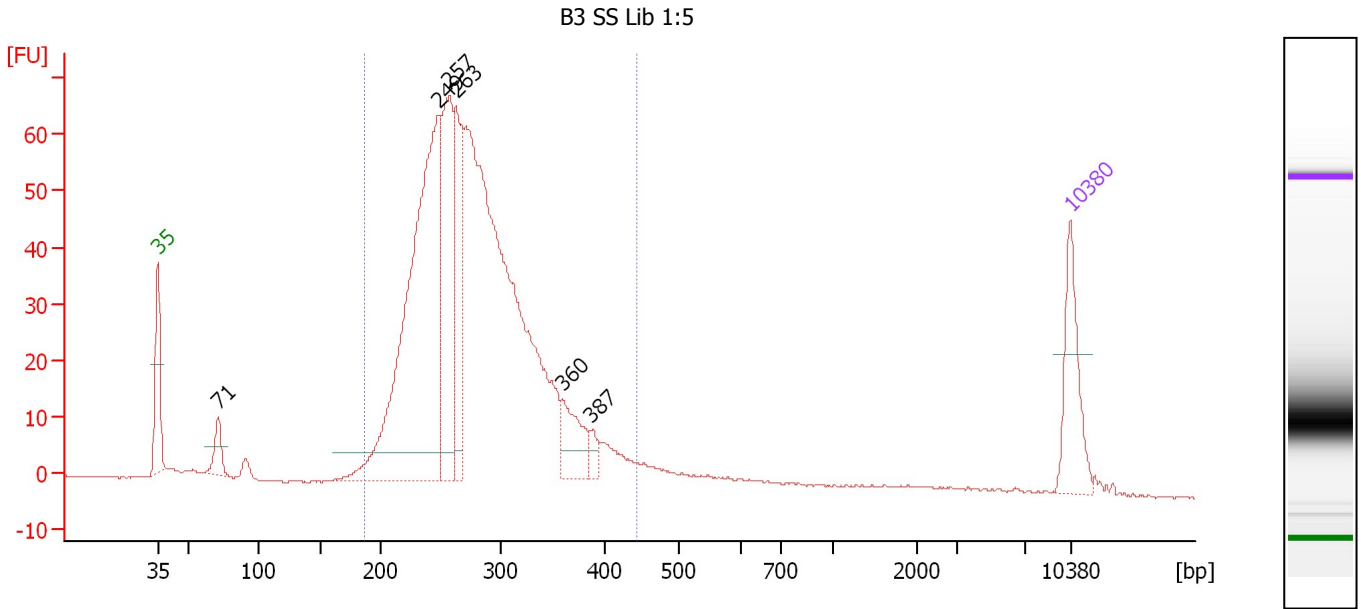
Region table for sample 9 : B2 SS Lib 1:5

From [bp]	To [bp]	Average Size [bp]	Molarity [pmol/l]	Conc. [pg/μl]	Co Corr. lor Area	% of Total	Size distribution in CV [%]
185	447	284	11,787.4	2,141.38	1,281.6	92	17.1

Assay Class: High Sensitivity DNA Assay
 Data Path: C:\...ents and Settings\Bioanalyzer\2014-02-21\2014-02-21_003.xad

Created: 2/21/2014 12:50:15 PM
 Modified: 2/21/2014 1:36:56 PM

Electropherogram Summary Continued ...



Overall Results for sample 10 : B3 SS Lib 1:5

Number of peaks found: 6 Corr. Area 1: 931.1
 Noise: 0.2

Peak table for sample 10 : B3 SS Lib 1:5

Peak	Aligned Migration Time [s]	Size [bp]	Conc. [pg/μl]	Molarity [pmol/l]	Observations
1	43.00	35	125.00	5,411.3	Lower Marker
2	47.66	71	40.02	848.7	
3	64.60	249	697.57	4,247.1	
4	65.37	257	242.41	1,427.7	
5	65.90	263	150.56	867.2	
6	74.06	360	69.07	290.9	
7	76.22	387	15.92	62.4	
8	113.00	10,380	75.00	10.9	Upper Marker

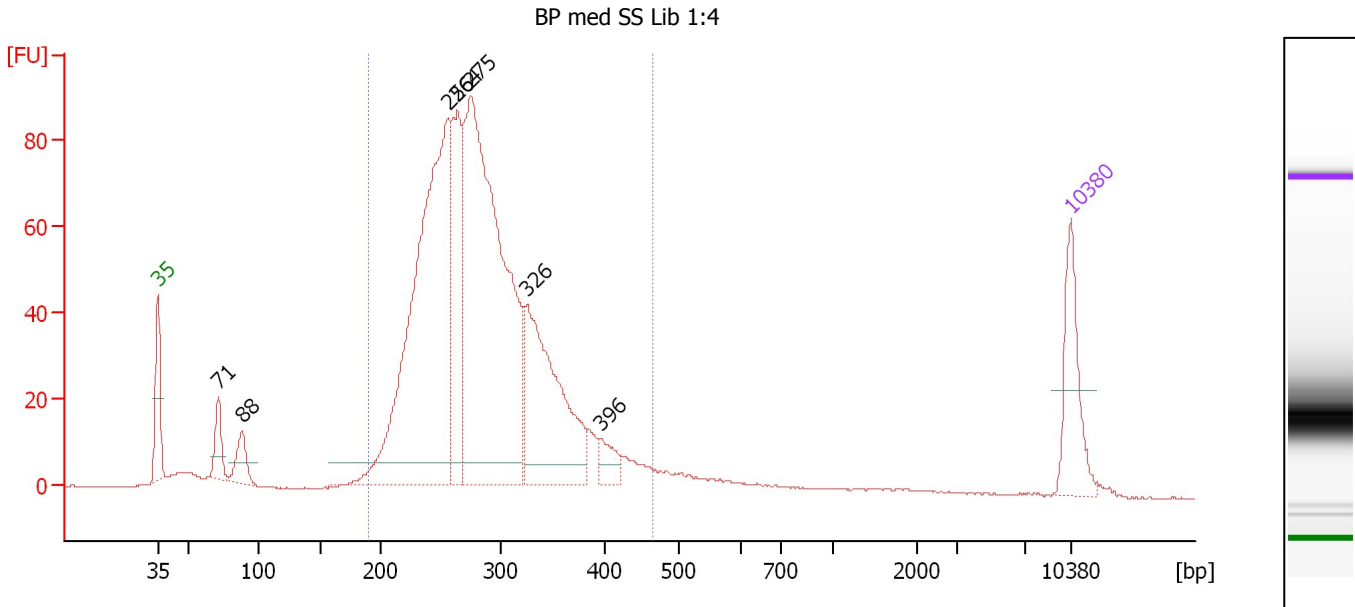
Region table for sample 10 : B3 SS Lib 1:5

From [bp]	To [bp]	Average Size [bp]	Molarity [pmol/l]	Conc. [pg/μl]	Co Corr. lor Area	% of Total	Size distribution in CV [%]
187	443	280	12,496.8	2,243.30	931.1	92	17.1

Assay Class: High Sensitivity DNA Assay
 Data Path: C:\...ents and Settings\Bioanalyzer\2014-02-21\2014-02-21_003.xad

Created: 2/21/2014 12:50:15 PM
 Modified: 2/21/2014 1:36:56 PM

Electropherogram Summary Continued ...



Overall Results for sample 11 : BP med SS Lib 1:4

Number of peaks found: 7 Corr. Area 1: 1,246.1
 Noise: 0.1

Peak table for sample 11 : BP med SS Lib 1:4

Peak	Aligned Migration Time [s]	Size [bp]	Conc. [pg/μl]	Molarity [pmol/l]	Observations
1	43.00	35	125.00	5,411.3	Lower Marker
2	47.65	71	49.56	1,051.8	
3	49.44	88	47.59	821.9	
4	65.28	256	717.91	4,244.2	
5	66.01	264	222.59	1,276.3	
6	67.03	275	799.06	4,396.5	
7	71.34	326	294.15	1,368.1	
8	76.96	396	28.40	108.7	
9	113.00	10,380	75.00	10.9	Upper Marker

Region table for sample 11 : BP med SS Lib 1:4

From [bp]	To [bp]	Average Size [bp]	Molarity [pmol/l]	Conc. [pg/μl]	Co Corr. lor Area	% of Total	Size distribution in CV [%]
189	466	287	11,854.4	2,169.46	1,246.1	90	17.7

Assay Class: High Sensitivity DNA Assay
Data Path: C:\...ents and Settings\Bioanalyzer\2014-02-21\2014-02-21_003.xad

Created: 2/21/2014 12:50:15 PM
Modified: 2/21/2014 1:36:56 PM

Gel Image

