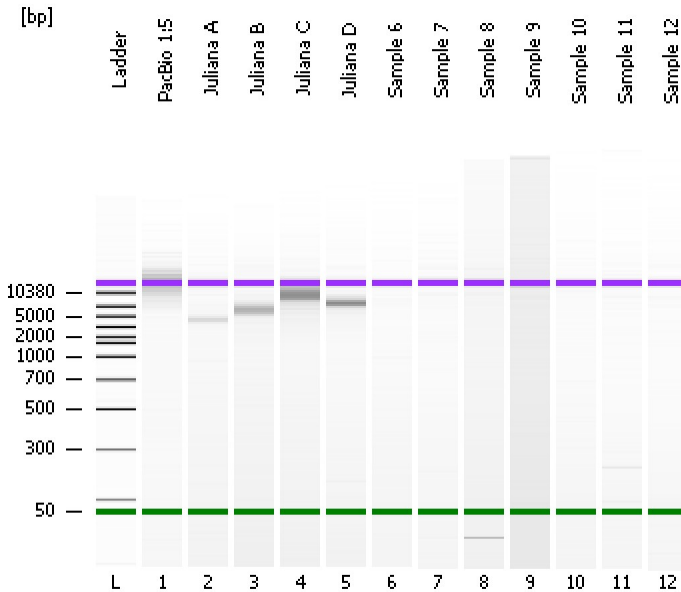


Assay Class: DNA 12000
Data Path: C:\...ents and Settings\Bioanalyzer\2014-02-24\2014-02-24_003.xad

Created: 2/24/2014 1:09:35 PM
Modified: 2/24/2014 2:18:45 PM

Electrophoresis File Run Summary



Instrument Information:

Instrument Name: DE13701086 Firmware: C.01.069
Serial#: DE13701086 Type: G2938B

Assay Information:

Assay Origin Path: C:\Program Files\Agilent\2100 bioanalyzer\2100 expert\assays\dsDNA\DNA 12000 Series II.xsy

Assay Class: DNA 12000

Version: 2.4

Assay Comments: DNA Analysis 100 -12000 bp

© Copyright 2003-2009 Agilent Technologies, Inc.

Chip Information:

Chip Lot #:

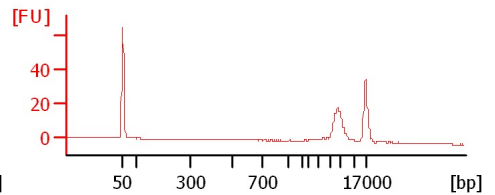
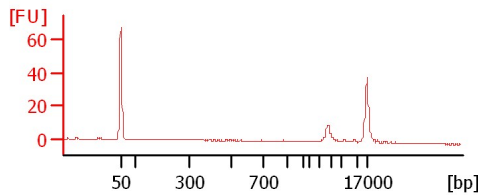
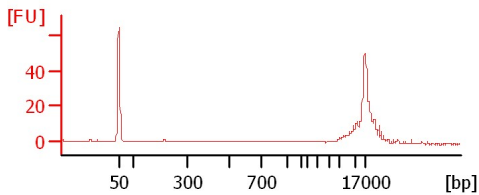
Reagent Kit Lot #:

Chip Comments:

PacBio 1:5

Juliana A

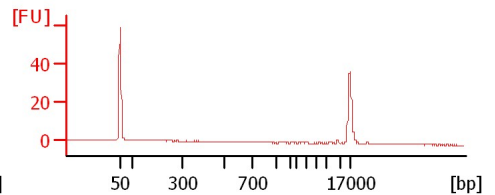
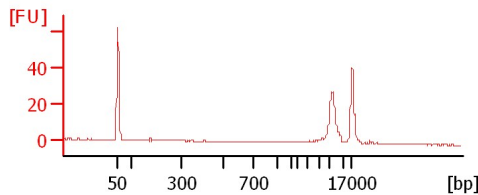
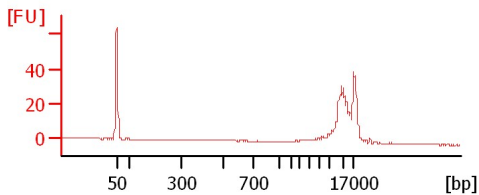
Juliana B



Juliana C

Juliana D

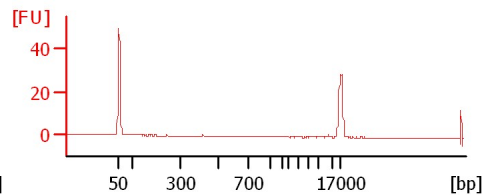
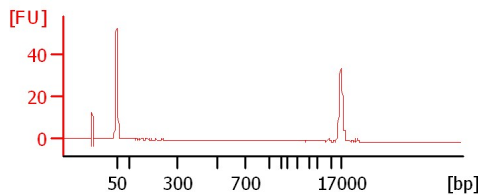
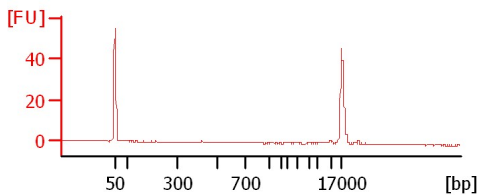
Sample 6



Sample 7

Sample 8

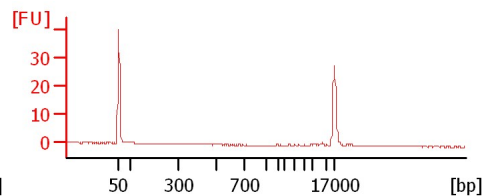
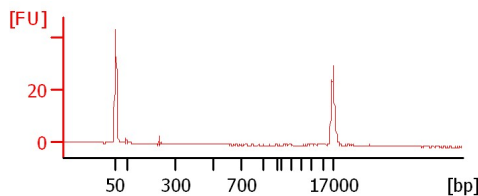
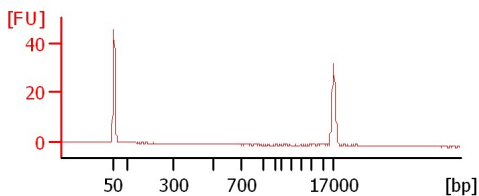
Sample 9



Sample 10

Sample 11

Sample 12



Assay Class: DNA 12000
 Data Path: C:\...ents and Settings\Bioanalyzer\2014-02-24\2014-02-24_003.xad

Created: 2/24/2014 1:09:35 PM
 Modified: 2/24/2014 2:18:45 PM

Electrophoresis File Run Summary (Chip Summary)

Sample Name	Sample Comment	Rest. Digest	Status	Observation	Result Label	Result Color
PacBio 1:5		<input type="checkbox"/>	✓			
Juliana A		<input type="checkbox"/>	✓			
Juliana B		<input type="checkbox"/>	✓			
Juliana C		<input type="checkbox"/>	✓			
Juliana D		<input type="checkbox"/>	✓			
Sample 6		<input type="checkbox"/>	✓			
Sample 7		<input type="checkbox"/>	✓			
Sample 8		<input type="checkbox"/>	✓			
Sample 9		<input type="checkbox"/>	✓			
Sample 10		<input type="checkbox"/>	✓			
Sample 11		<input type="checkbox"/>	✓			
Sample 12		<input type="checkbox"/>	✓			
Ladder		<input type="checkbox"/>	✓			

Chip Lot #

Reagent Kit Lot #

Chip Comments :

Assay Class: DNA 12000
Data Path: C:\...ents and Settings\Bioanalyzer\2014-02-24\2014-02-24_003.xad

Created: 2/24/2014 1:09:35 PM
Modified: 2/24/2014 2:18:45 PM

Electrophoresis Assay Details

General Analysis Settings

Number of Available Sample and Ladder Wells (Max.) : 13
Minimum Visible Range [s] : 20
Maximum Visible Range [s] : 99
Start Analysis Time Range [s] : 20
End Analysis Time Range [s] : 98.95
Ladder Concentration [ng/μl] : 44
Uses Standard Area for Ladder Fragments
Lower Marker Concentration [ng/μl] : 8.3
Upper Marker Concentration [ng/μl] : 4.2
Used Upper Marker for Quantitation
This is a Qualitative Assay Only
Standard Curve Fit is Point to Point
Show Data Aligned to Lower and Upper Marker

Integrator Settings

Integration Start Time [s] : 20
Integration End Time [s] : 98.95
Slope Threshold : 0.8
Height Threshold [FU] : 20
Area Threshold : 0.1
Width Threshold [s] : 0.5
Baseline Plateau [s] : 0.5

Filter Settings

Filter Width [s] : 0.5
Polynomial Order : 4

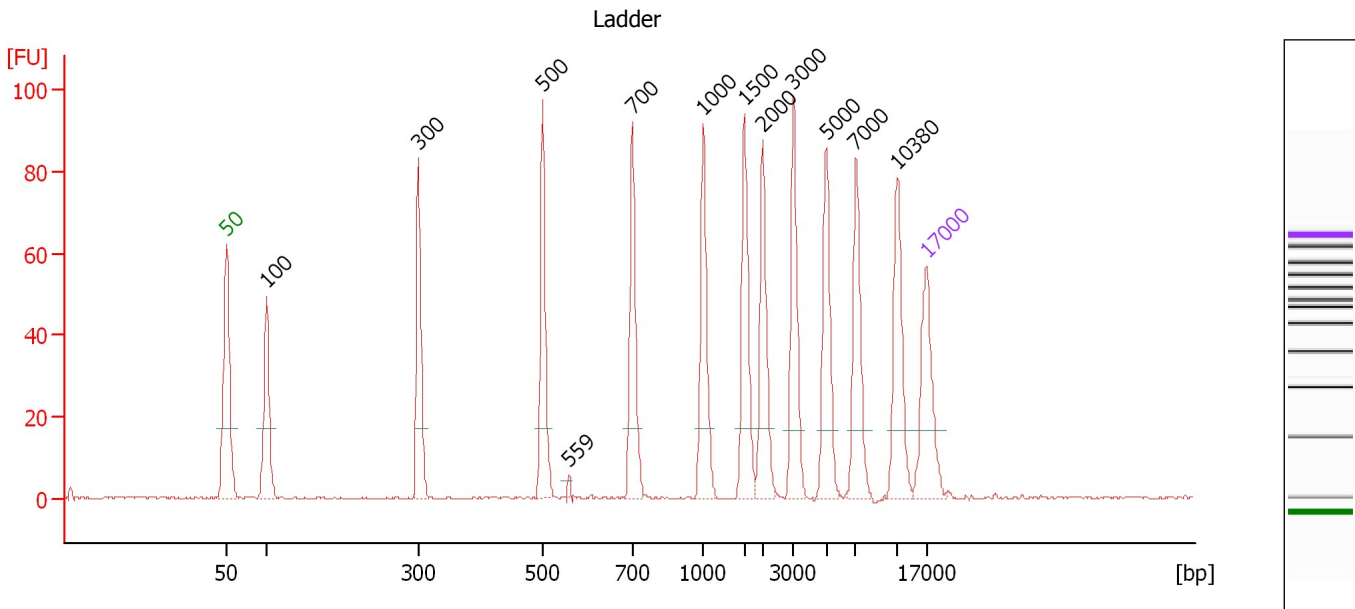
Ladder

Ladder Peak	Size	Area
1	50	120
2	100	48
3	300	61
4	500	77
5	700	81
6	1000	86
7	1500	92
8	2000	92
9	3000	96
10	5000	100
11	7000	98
12	10380	102
13	17000	110

Assay Class: DNA 12000
 Data Path: C:\...ents and Settings\Bioanalyzer\2014-02-24\2014-02-24_003.xad

Created: 2/24/2014 1:09:35 PM
 Modified: 2/24/2014 2:18:45 PM

Electropherogram Summary



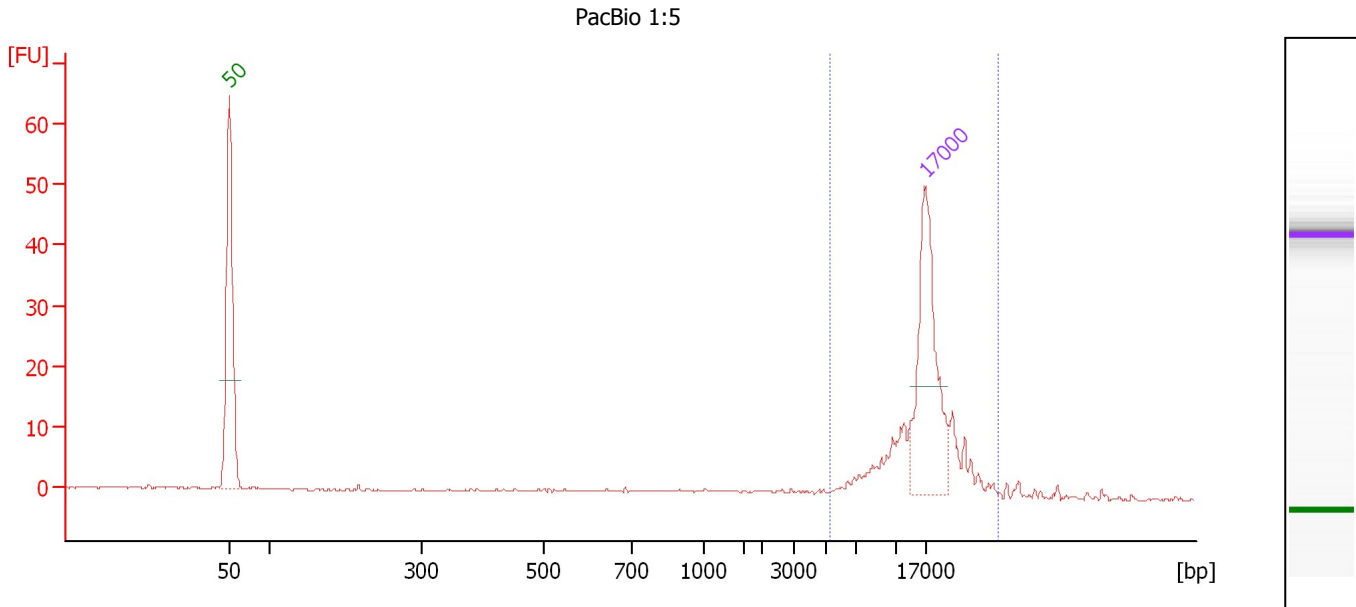
Peak table for Ladder

Peak	Size [bp]	Conc. [ng/μl]	Molarity [nmol/l]	Observations
1	50	8.30	251.5	Lower Marker
2	100	4.00	60.6	Ladder Peak
3	300	4.00	20.2	Ladder Peak
4	500	4.00	12.1	Ladder Peak
5	559	0.00	0.0	
6	700	4.00	8.7	Ladder Peak
7	1,000	4.00	6.1	Ladder Peak
8	1,500	4.00	4.0	Ladder Peak
9	2,000	4.00	3.0	Ladder Peak
10	3,000	4.00	2.0	Ladder Peak
11	5,000	4.00	1.2	Ladder Peak
12	7,000	4.00	0.9	Ladder Peak
13	10,380	4.00	0.6	Ladder Peak
14	17,000	4.20	0.4	Upper Marker

Assay Class: DNA 12000
 Data Path: C:\...ents and Settings\Bioanalyzer\2014-02-24\2014-02-24_003.xad

Created: 2/24/2014 1:09:35 PM
 Modified: 2/24/2014 2:18:45 PM

Electropherogram Summary Continued ...



Overall Results for sample 1 : PacBio 1:5

Number of peaks found: 0 Area 1: 46.0

Peak table for sample 1 : PacBio 1:5

Peak	Size [bp]	Conc. [ng/μl]	Molarity [nmol/l]	Observations
1	50	8.30	251.5	Lower Marker
2	17,000	4.20	0.4	Upper Marker

Region table for sample 1 : PacBio 1:5

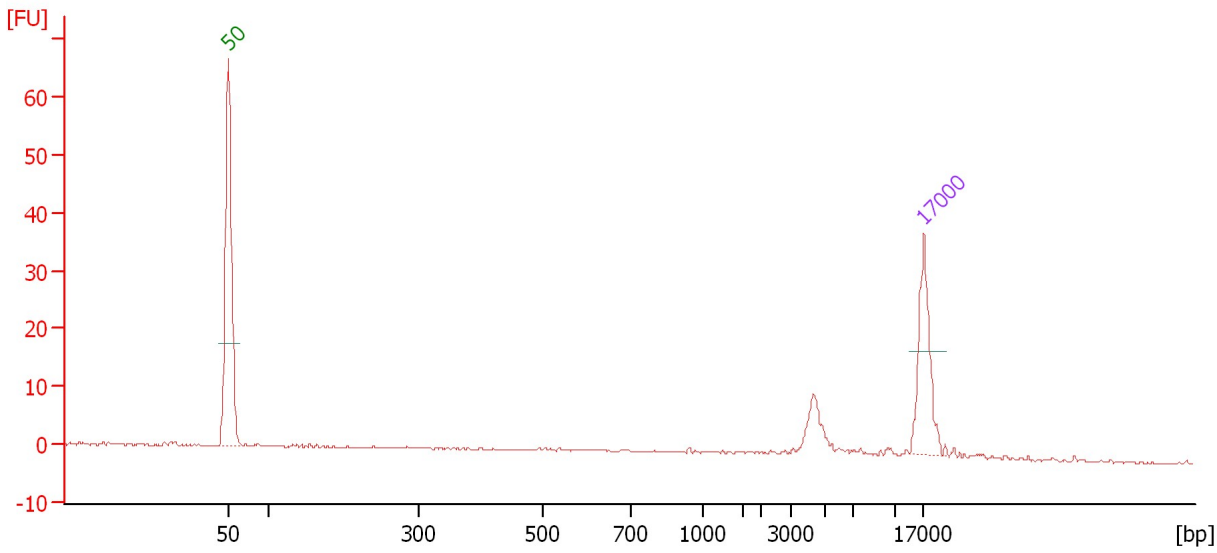
From [bp]	To [bp]	Average Size [bp]	Conc. [ng/μl]	Area	Col Size distribution in CV or [%]	% of Total
5,280	33,422	16,985	2.75	46.0	31.0	74

Assay Class: DNA 12000
Data Path: C:\...ents and Settings\Bioanalyzer\2014-02-24\2014-02-24_003.xad

Created: 2/24/2014 1:09:35 PM
Modified: 2/24/2014 2:18:45 PM

Electropherogram Summary Continued ...

Juliana A



Overall Results for sample 2 : Juliana A

Number of peaks found: 0

Peak table for sample 2 : Juliana A

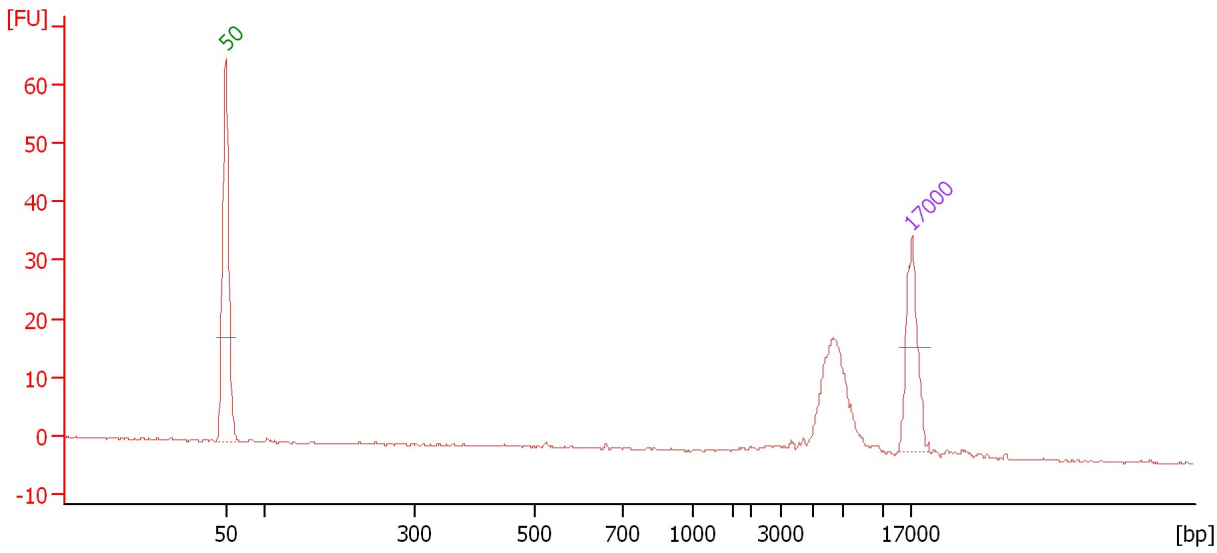
Peak	Size [bp]	Conc. [ng/μl]	Molarity [nmol/l]	Observations
1	50	8.30	251.5	Lower Marker
2	17,000	4.20	0.4	Upper Marker

Assay Class: DNA 12000
Data Path: C:\...ents and Settings\Bioanalyzer\2014-02-24\2014-02-24_003.xad

Created: 2/24/2014 1:09:35 PM
Modified: 2/24/2014 2:18:45 PM

Electropherogram Summary Continued ...

Juliana B



Overall Results for sample 3 : Juliana B

Number of peaks found: 0

Peak table for sample 3 : Juliana B

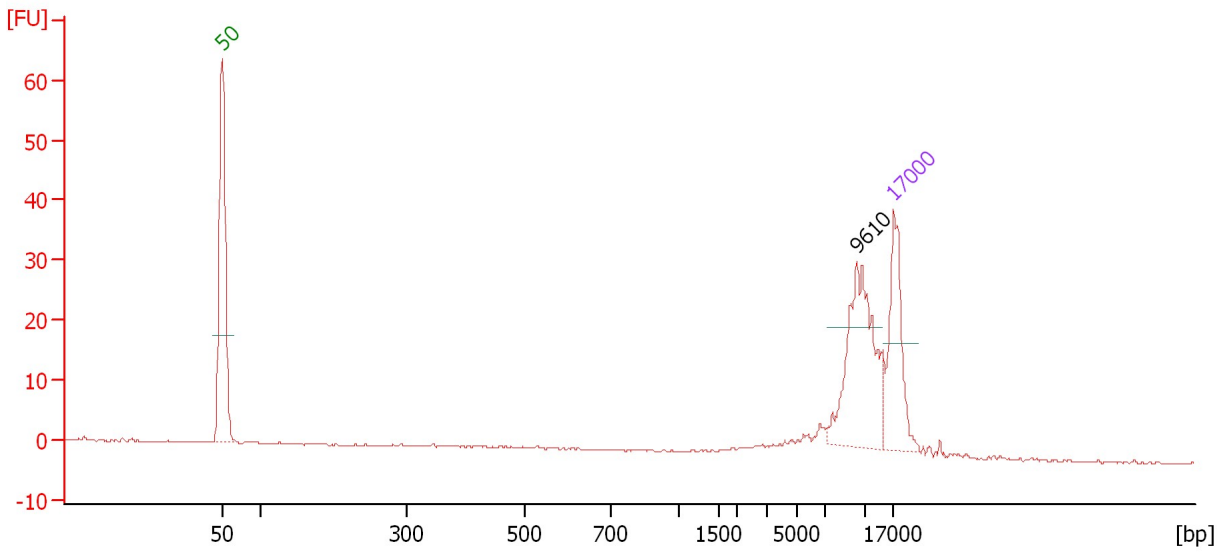
Peak	Size [bp]	Conc. [ng/μl]	Molarity [nmol/l]	Observations
1	50	8.30	251.5	Lower Marker
2	17,000	4.20	0.4	Upper Marker

Assay Class: DNA 12000
Data Path: C:\...ents and Settings\Bioanalyzer\2014-02-24\2014-02-24_003.xad

Created: 2/24/2014 1:09:35 PM
Modified: 2/24/2014 2:18:45 PM

Electropherogram Summary Continued ...

Juliana C



Overall Results for sample 4 : Juliana C

Number of peaks found: 1

Peak table for sample 4 : Juliana C

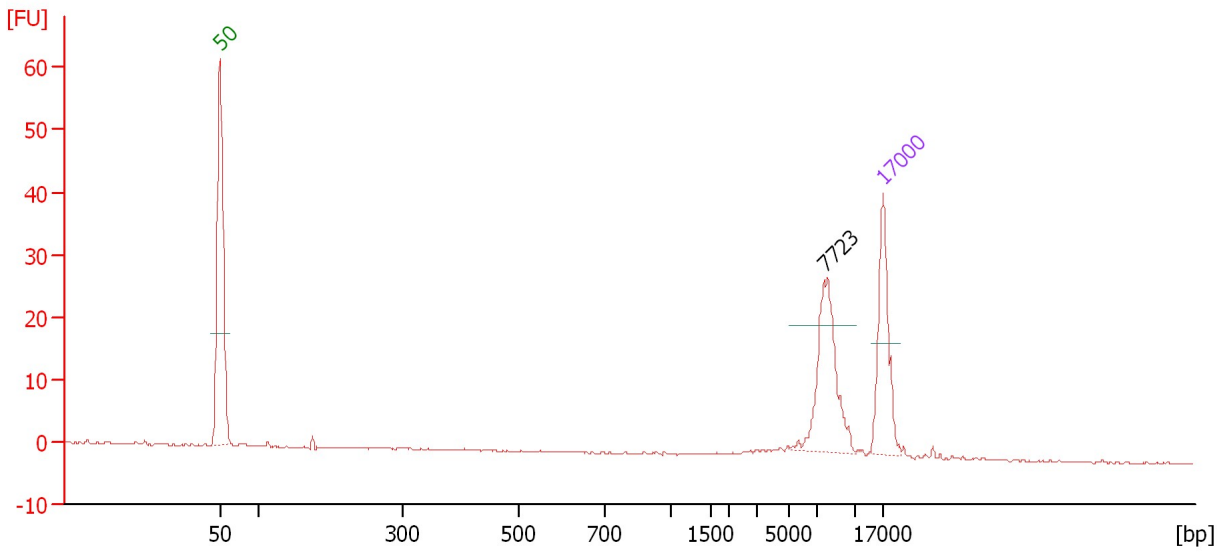
Peak	Size [bp]	Conc. [ng/μl]	Molarity [nmol/l]	Observations
1	50	8.30	251.5	Lower Marker
2	9,610	7.21	1.1	
3	17,000	4.20	0.4	Upper Marker

Assay Class: DNA 12000
Data Path: C:\...ents and Settings\Bioanalyzer\2014-02-24\2014-02-24_003.xad

Created: 2/24/2014 1:09:35 PM
Modified: 2/24/2014 2:18:45 PM

Electropherogram Summary Continued ...

Juliana D



Overall Results for sample 5 : Juliana D

Number of peaks found: 1

Peak table for sample 5 : Juliana D

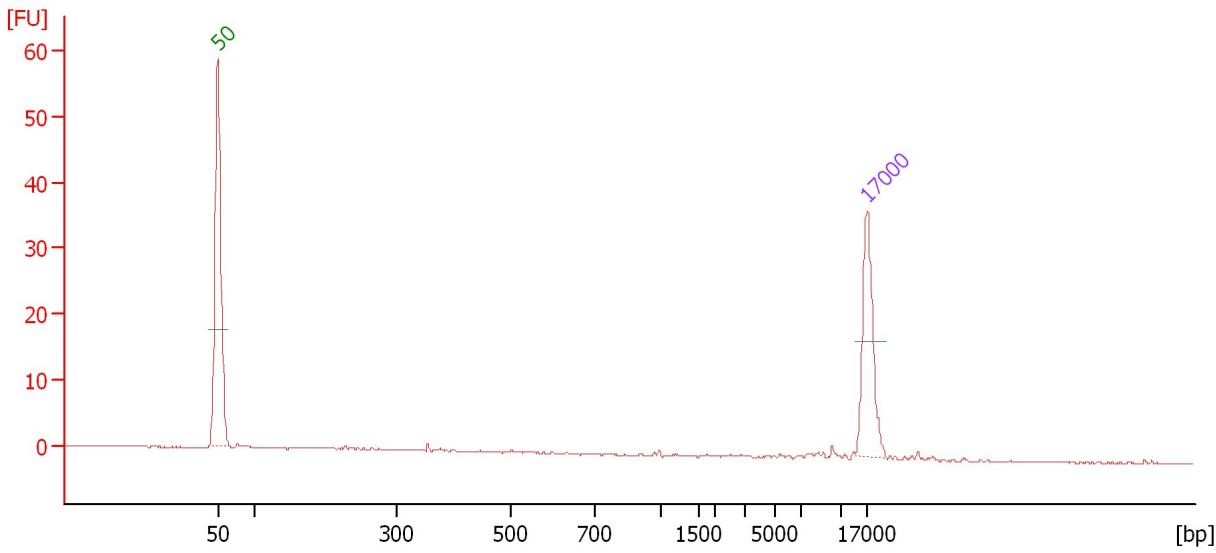
Peak	Size [bp]	Conc. [ng/μl]	Molarity [nmol/l]	Observations
1	50	8.30	251.5	Lower Marker
2	7,723	5.42	1.1	
3	17,000	4.20	0.4	Upper Marker

Assay Class: DNA 12000
Data Path: C:\...ents and Settings\Bioanalyzer\2014-02-24\2014-02-24_003.xad

Created: 2/24/2014 1:09:35 PM
Modified: 2/24/2014 2:18:45 PM

Electropherogram Summary Continued ...

Sample 6



Overall Results for sample 6 : Sample 6

Number of peaks found: 0

Peak table for sample 6 : Sample 6

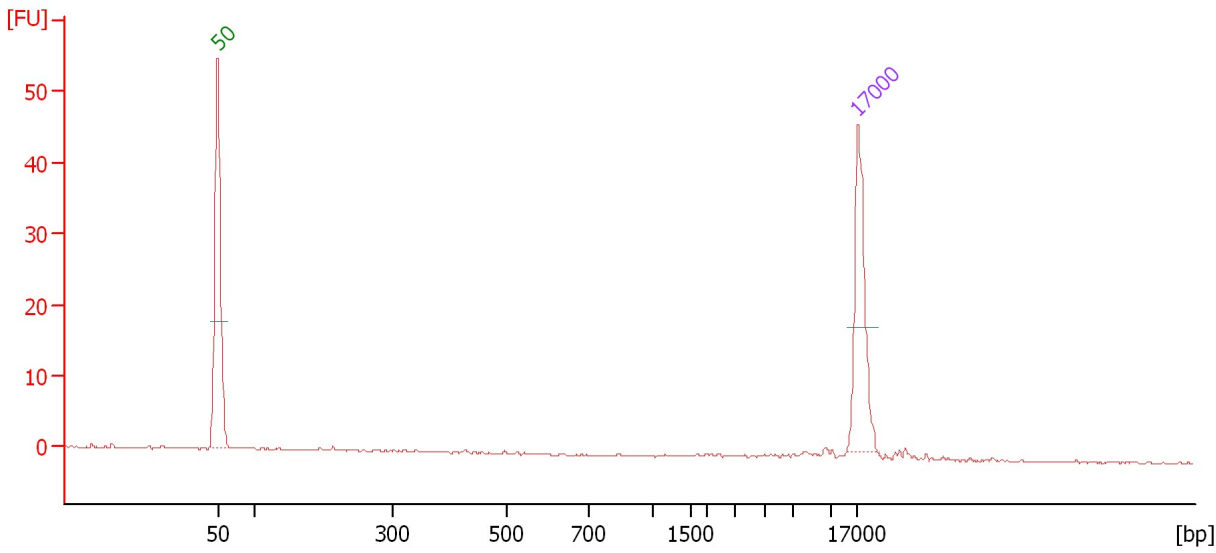
Peak	Size [bp]	Conc. [ng/μl]	Molarity [nmol/l]	Observations
1	50	8.30	251.5	Lower Marker
2	17,000	4.20	0.4	Upper Marker

Assay Class: DNA 12000
Data Path: C:\...ents and Settings\Bioanalyzer\2014-02-24\2014-02-24_003.xad

Created: 2/24/2014 1:09:35 PM
Modified: 2/24/2014 2:18:45 PM

Electropherogram Summary Continued ...

Sample 7



Overall Results for sample 7 : Sample 7

Number of peaks found: 0

Peak table for sample 7 : Sample 7

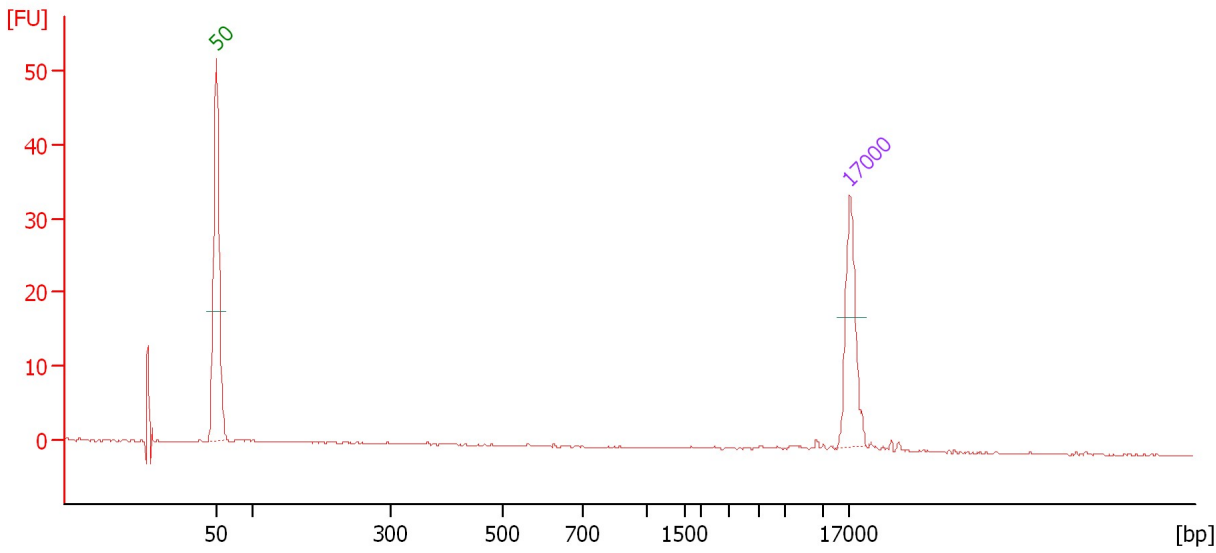
Peak	Size [bp]	Conc. [ng/μl]	Molarity [nmol/l]	Observations
1	50	8.30	251.5	Lower Marker
2	17,000	4.20	0.4	Upper Marker

Assay Class: DNA 12000
Data Path: C:\...ents and Settings\Bioanalyzer\2014-02-24\2014-02-24_003.xad

Created: 2/24/2014 1:09:35 PM
Modified: 2/24/2014 2:18:45 PM

Electropherogram Summary Continued ...

Sample 8



Overall Results for sample 8 : Sample 8

Number of peaks found: 0

Peak table for sample 8 : Sample 8

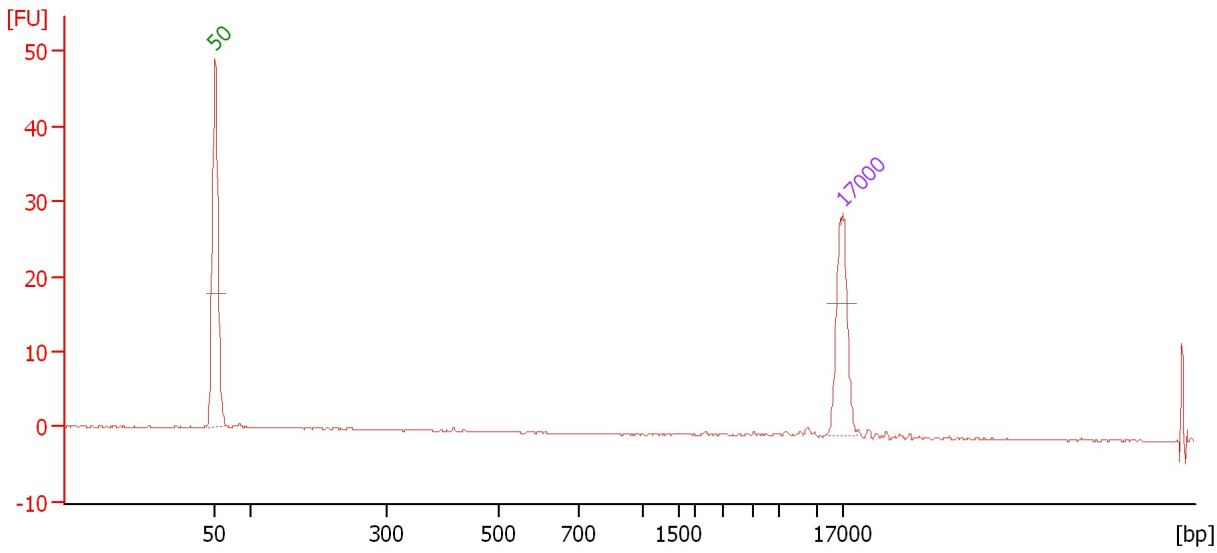
Peak	Size [bp]	Conc. [ng/μl]	Molarity [nmol/l]	Observations
1	50	8.30	251.5	Lower Marker
2	17,000	4.20	0.4	Upper Marker

Assay Class: DNA 12000
Data Path: C:\...ents and Settings\Bioanalyzer\2014-02-24\2014-02-24_003.xad

Created: 2/24/2014 1:09:35 PM
Modified: 2/24/2014 2:18:45 PM

Electropherogram Summary Continued ...

Sample 9



Overall Results for sample 9 : Sample 9

Number of peaks found: 0

Peak table for sample 9 : Sample 9

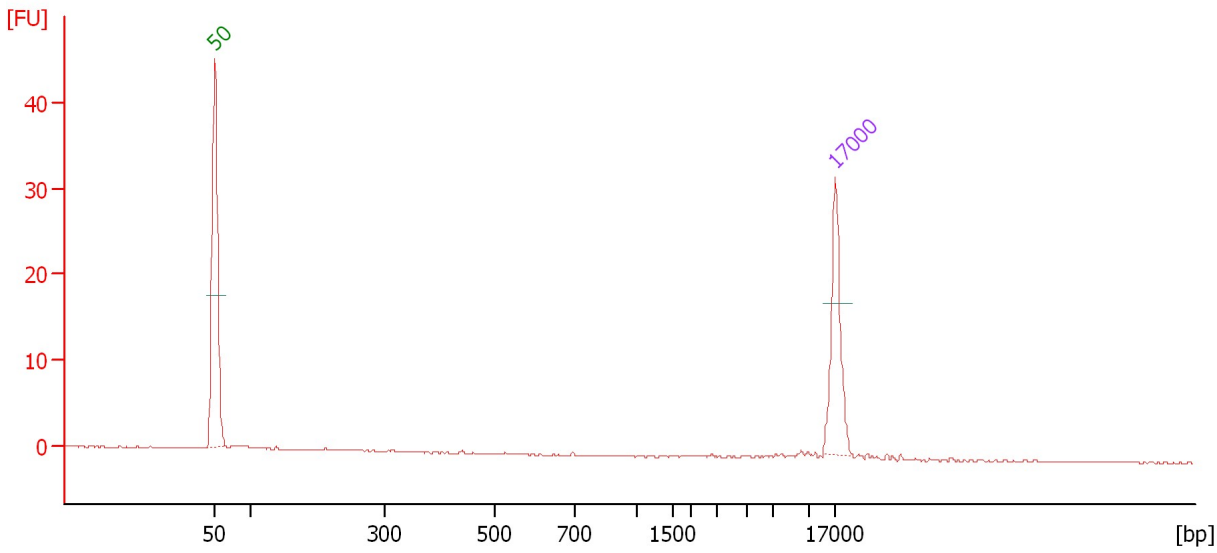
Peak	Size [bp]	Conc. [ng/μl]	Molarity [nmol/l]	Observations
1	50	8.30	251.5	Lower Marker
2	17,000	4.20	0.4	Upper Marker

Assay Class: DNA 12000
Data Path: C:\...ents and Settings\Bioanalyzer\2014-02-24\2014-02-24_003.xad

Created: 2/24/2014 1:09:35 PM
Modified: 2/24/2014 2:18:45 PM

Electropherogram Summary Continued ...

Sample 10



Overall Results for sample 10 : Sample 10

Number of peaks found: 0

Peak table for sample 10 : Sample 10

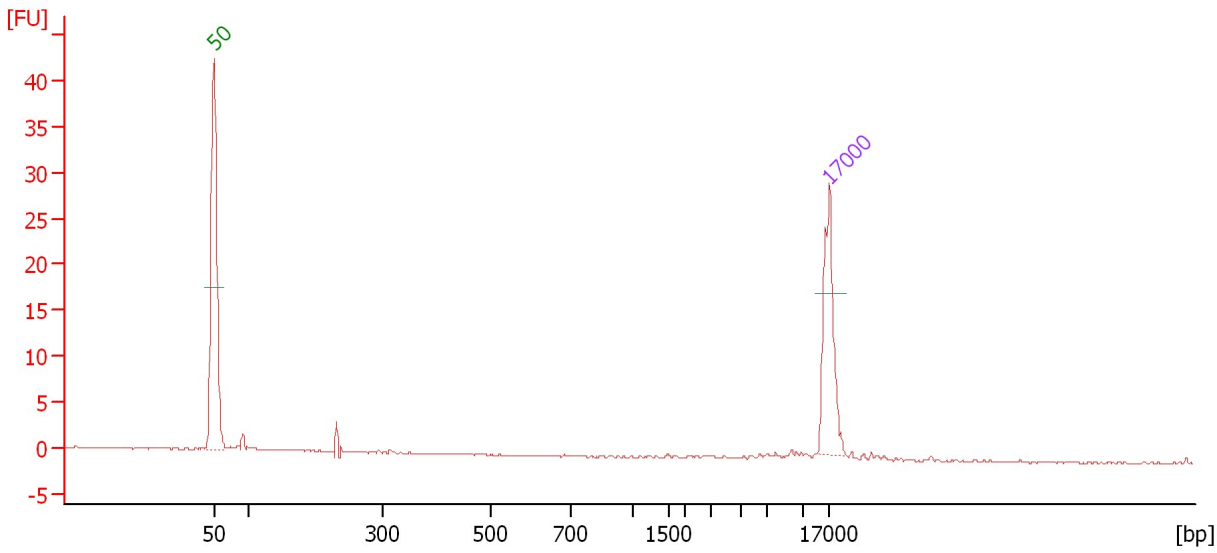
Peak	Size [bp]	Conc. [ng/μl]	Molarity [nmol/l]	Observations
1	50	8.30	251.5	Lower Marker
2	17,000	4.20	0.4	Upper Marker

Assay Class: DNA 12000
Data Path: C:\...ents and Settings\Bioanalyzer\2014-02-24\2014-02-24_003.xad

Created: 2/24/2014 1:09:35 PM
Modified: 2/24/2014 2:18:45 PM

Electropherogram Summary Continued ...

Sample 11



Overall Results for sample 11 : Sample 11

Number of peaks found: 0

Peak table for sample 11 : Sample 11

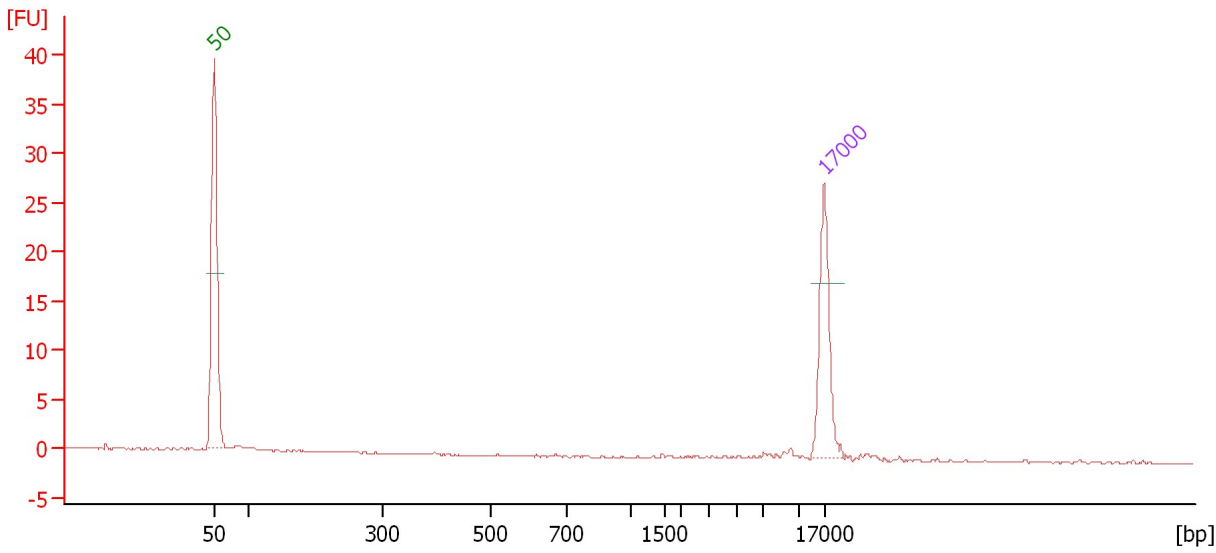
Peak	Size [bp]	Conc. [ng/μl]	Molarity [nmol/l]	Observations
1	50	8.30	251.5	Lower Marker
2	17,000	4.20	0.4	Upper Marker

Assay Class: DNA 12000
Data Path: C:\...ents and Settings\Bioanalyzer\2014-02-24\2014-02-24_003.xad

Created: 2/24/2014 1:09:35 PM
Modified: 2/24/2014 2:18:45 PM

Electropherogram Summary Continued ...

Sample 12



Overall Results for sample 12 : Sample 12

Number of peaks found: 0

Peak table for sample 12 : Sample 12

Peak	Size [bp]	Conc. [ng/μl]	Molarity [nmol/l]	Observations
1	50	8.30	251.5	Lower Marker
2	17,000	4.20	0.4	Upper Marker

Assay Class: DNA 12000
Data Path: C:\...ents and Settings\Bioanalyzer\2014-02-24\2014-02-24_003.xad

Created: 2/24/2014 1:09:35 PM
Modified: 2/24/2014 2:18:45 PM

Gel Image

