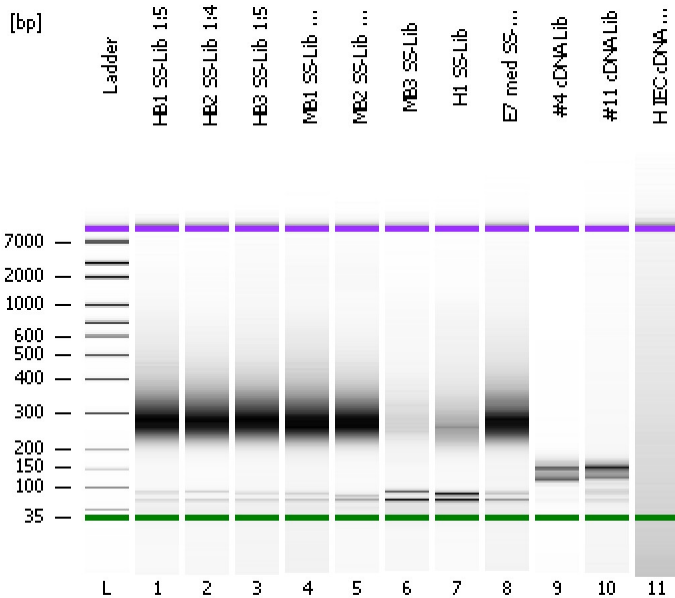


Assay Class: High Sensitivity DNA Assay
Data Path: C:\...ents and Settings\Bioanalyzer\2014-02-24\2014-02-24_005.xad

Created: 2/24/2014 5:37:55 PM
Modified: 2/24/2014 6:21:10 PM

Electrophoresis File Run Summary



Instrument Information:

Instrument Name: DE13701086 Firmware: C.01.069
Serial#: DE13701086 Type: G2938B

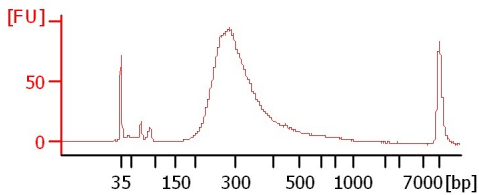
Assay Information:

Assay Origin Path: C:\Program Files\Agilent\2100 bioanalyzer\2100 expert\assays\dsDNA\High Sensitivity DNA.xsy
Assay Class: High Sensitivity DNA Assay
Version: 1.03
Assay Comments: Copyright © 2003-2010 Agilent Technologies

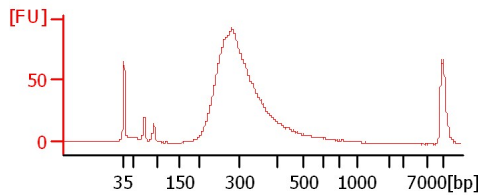
Chip Information:

Chip Lot #:
Reagent Kit Lot #:
Chip Comments:

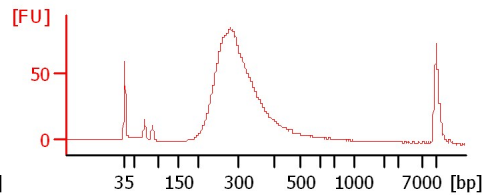
HB1 SS-Lib 1:5



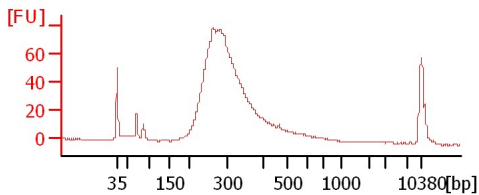
HB2 SS-Lib 1:4



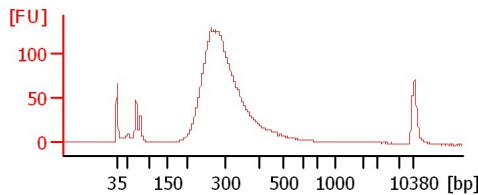
HB3 SS-Lib 1:5



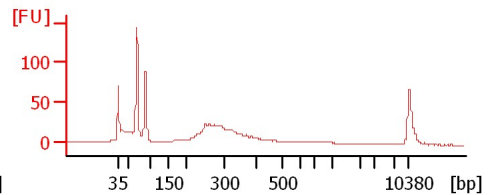
MB1 SS-Lib 1:4



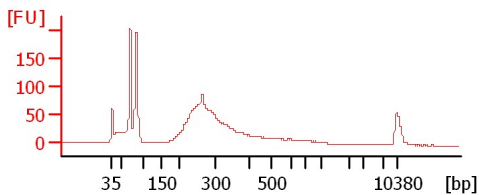
MB2 SS-Lib 1:3



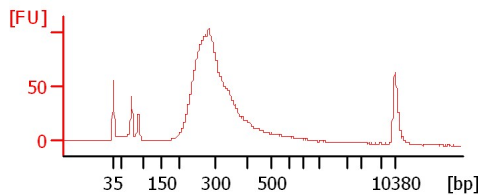
MB3 SS-Lib



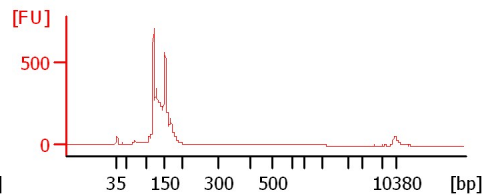
H1 SS-Lib



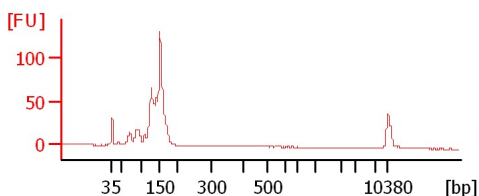
E7 med SS-Lib 1:4



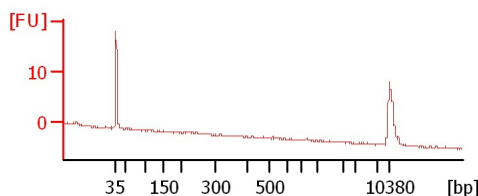
#4 cDNA Lib



#11 cDNA Lib



H IEC cDNA Lib



Assay Class: High Sensitivity DNA Assay
 Data Path: C:\...ents and Settings\Bioanalyzer\2014-02-24\2014-02-24_005.xad

Created: 2/24/2014 5:37:55 PM
 Modified: 2/24/2014 6:21:10 PM

Electrophoresis File Run Summary (Chip Summary)

Sample Name	Sample Comment	Rest. Digest	Status	Observation	Result Label	Result Color
HB1 SS-Lib 1:5		<input type="checkbox"/>	✓			
HB2 SS-Lib 1:4		<input type="checkbox"/>	✓			
HB3 SS-Lib 1:5		<input type="checkbox"/>	✓			
MB1 SS-Lib 1:4		<input type="checkbox"/>	✓			
MB2 SS-Lib 1:3		<input type="checkbox"/>	✓			
MB3 SS-Lib		<input type="checkbox"/>	✓			
H1 SS-Lib		<input type="checkbox"/>	✓			
E7 med SS-Lib 1:4		<input type="checkbox"/>	✓			
#4 cDNA Lib		<input type="checkbox"/>	✓			
#11 cDNA Lib		<input type="checkbox"/>	✓			
H IEC cDNA Lib		<input type="checkbox"/>	✓			
Ladder		<input type="checkbox"/>	✓			

Chip Lot #

Reagent Kit Lot #

Chip Comments :

Assay Class: High Sensitivity DNA Assay
Data Path: C:\...ents and Settings\Bioanalyzer\2014-02-24\2014-02-24_005.xad

Created: 2/24/2014 5:37:55 PM
Modified: 2/24/2014 6:21:10 PM

Electrophoresis Assay Details

General Analysis Settings

Number of Available Sample and Ladder Wells (Max.) : 12
Minimum Visible Range [s] : 32
Maximum Visible Range [s] : 138
Start Analysis Time Range [s] : 33
End Analysis Time Range [s] : 137.5
Ladder Concentration [pg/μl] : 1950
Uses Standard Area for Ladder Fragments
Lower Marker Concentration [pg/μl] : 125
Upper Marker Concentration [pg/μl] : 75
Used Upper Marker for Quantitation
Standard Curve Fit is Point to Point
Show Data Aligned to Lower and Upper Marker

Integrator Settings

Integration Start Time [s] : 33.05
Integration End Time [s] : 137
Slope Threshold : 0.8
Height Threshold [FU] : 5
Area Threshold : 0.1
Width Threshold [s] : 0.6
Baseline Plateau [s] : 0.5

Filter Settings

Filter Width [s] : 0.5
Polynomial Order : 4

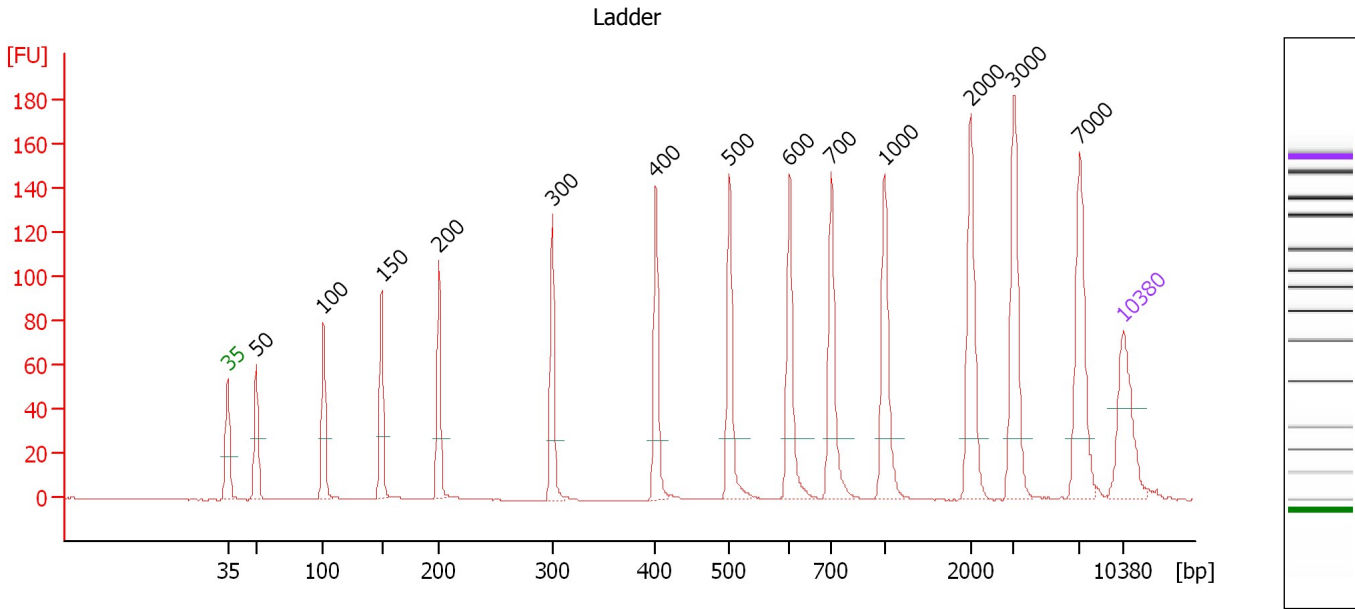
Ladder

Ladder Peak	Size	Area
1	35	160
2	50	210
3	100	208
4	150	221
5	200	242
6	300	270
7	400	305
8	500	306
9	600	336
10	700	321
11	1000	366
12	2000	413
13	3000	411
14	7000	400
15	10380	214

Assay Class: High Sensitivity DNA Assay
 Data Path: C:\...ents and Settings\Bioanalyzer\2014-02-24\2014-02-24_005.xad

Created: 2/24/2014 5:37:55 PM
 Modified: 2/24/2014 6:21:10 PM

Electropherogram Summary



Overall Results for Ladder

Noise: 0.1

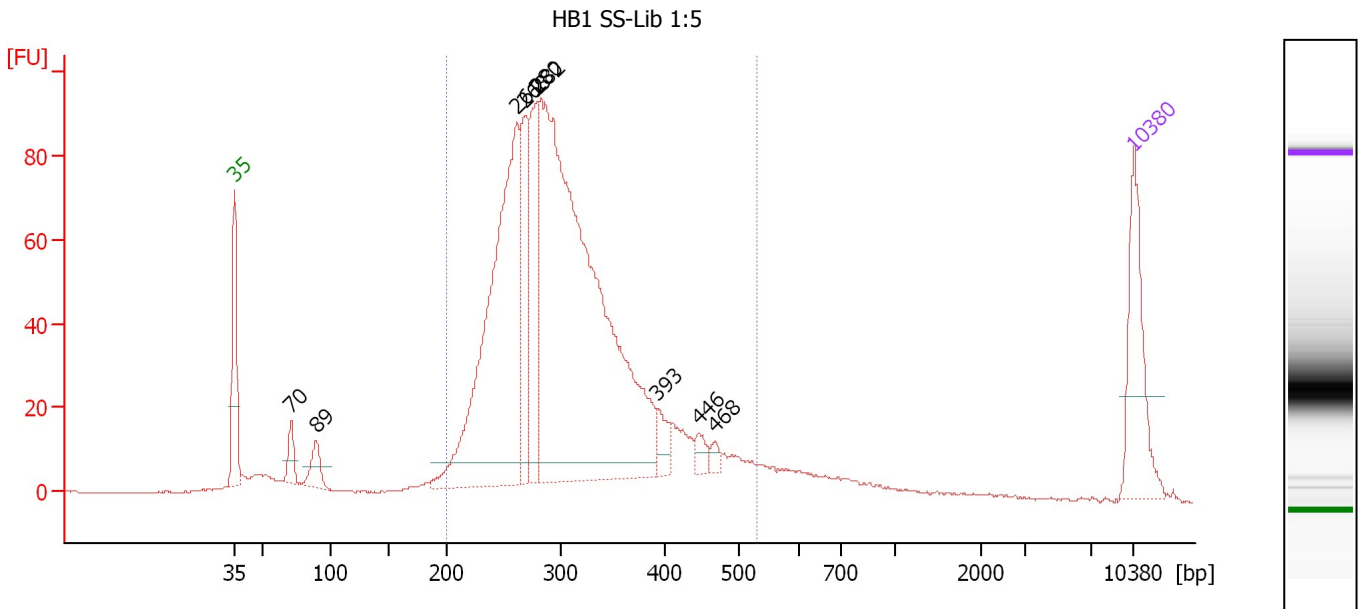
Peak table for Ladder

Peak	Aligned Migration Time [s]	Size [bp]	Conc. [pg/μl]	Molarity [pmol/l]	Observations
1	43.00	35	125.00	5,411.3	Lower Marker
2	45.25	50	150.00	4,545.5	Ladder Peak
3	50.50	100	150.00	2,272.7	Ladder Peak
4	55.05	150	150.00	1,515.2	Ladder Peak
5	59.51	200	150.00	1,136.4	Ladder Peak
6	68.39	300	150.00	757.6	Ladder Peak
7	76.48	400	150.00	568.2	Ladder Peak
8	82.27	500	150.00	454.5	Ladder Peak
9	86.94	600	150.00	378.8	Ladder Peak
10	90.19	700	150.00	324.7	Ladder Peak
11	94.36	1,000	150.00	227.3	Ladder Peak
12	101.12	2,000	150.00	113.6	Ladder Peak
13	104.49	3,000	150.00	75.8	Ladder Peak
14	109.66	7,000	150.00	32.5	Ladder Peak
15	113.00	10,380	75.00	10.9	Upper Marker

Assay Class: High Sensitivity DNA Assay
 Data Path: C:\...ents and Settings\Bioanalyzer\2014-02-24\2014-02-24_005.xad

Created: 2/24/2014 5:37:55 PM
 Modified: 2/24/2014 6:21:10 PM

Electropherogram Summary Continued ...



Overall Results for sample 1 : HB1 SS-Lib 1:5

Number of peaks found: 9 Corr. Area 1: 1,475.3
 Noise: 0.2

Peak table for sample 1 : HB1 SS-Lib 1:5

Peak	Aligned Migration Time [s]	Size [bp]	Conc. [pg/μl]	Molarity [pmol/l]	Observations
1	43.00	35	125.00	5,411.3	Lower Marker
2	47.40	70	25.58	550.0	
3	49.35	89	32.34	550.3	
4	64.96	261	491.87	2,850.9	
5	65.54	268	111.72	631.7	
6	66.58	280	126.41	684.9	
7	66.75	282	897.76	4,831.9	
8	75.92	393	22.32	86.0	
9	79.16	446	13.89	47.1	
10	80.41	468	8.66	28.0	
11	113.00	10,380	75.00	10.9	Upper Marker

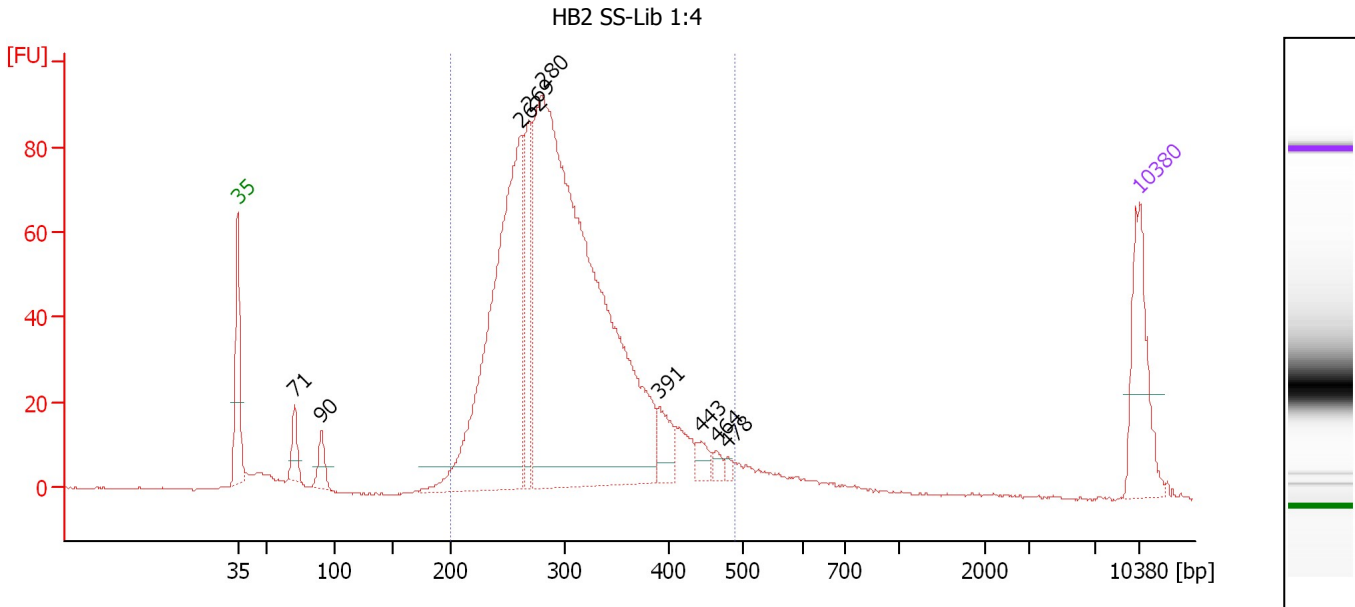
Region table for sample 1 : HB1 SS-Lib 1:5

From [bp]	To [bp]	Average Size [bp]	Molarity [pmol/l]	Conc. [pg/μl]	Co Corr. for Area	% of Total	Size distribution in CV [%]
200	529	309	9,417.6	1,829.33	1,475.3	88	20.4

Assay Class: High Sensitivity DNA Assay
 Data Path: C:\...ents and Settings\Bioanalyzer\2014-02-24\2014-02-24_005.xad

Created: 2/24/2014 5:37:55 PM
 Modified: 2/24/2014 6:21:10 PM

Electropherogram Summary Continued ...



Overall Results for sample 2 : HB2 SS-Lib 1:4

Number of peaks found: 9 Corr. Area 1: 1,363.7
 Noise: 0.2

Peak table for sample 2 : HB2 SS-Lib 1:4

Peak	Aligned Migration Time [s]	Size [bp]	Conc. [pg/μl]	Molarity [pmol/l]	Observations
1	43.00	35	125.00	5,411.3	Lower Marker
2	47.43	71	34.73	743.8	
3	49.50	90	29.67	496.9	
4	65.04	262	520.86	3,009.6	
5	65.62	269	111.49	628.5	
6	66.65	280	1,107.13	5,982.1	
7	75.76	391	35.82	138.7	
8	78.99	443	17.26	59.0	
9	80.20	464	8.94	29.2	
10	81.02	478	4.82	15.2	
11	113.00	10,380	75.00	10.9	Upper Marker

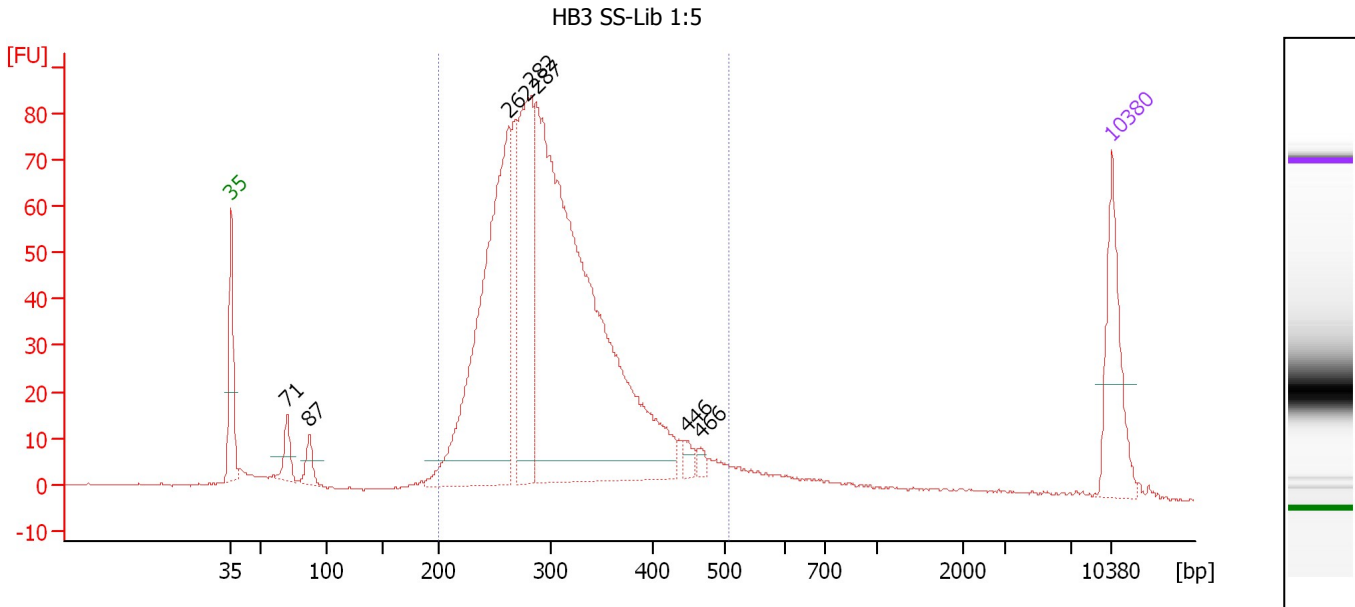
Region table for sample 2 : HB2 SS-Lib 1:4

From [bp]	To [bp]	Average Size [bp]	Molarity [pmol/l]	Conc. [pg/μl]	Co Corr. for Area	% of Total	Size distribution in CV [%]
200	488	303	9,721.2	1,869.32	1,363.7	92	18.4

Assay Class: High Sensitivity DNA Assay
 Data Path: C:\...ents and Settings\Bioanalyzer\2014-02-24\2014-02-24_005.xad

Created: 2/24/2014 5:37:55 PM
 Modified: 2/24/2014 6:21:10 PM

Electropherogram Summary Continued ...



Overall Results for sample 3 : HB3 SS-Lib 1:5

Number of peaks found: 7 Corr. Area 1: 1,285.3
 Noise: 0.2

Peak table for sample 3 : HB3 SS-Lib 1:5

Peak	Aligned Migration Time [s]	Size [bp]	Conc. [pg/μl]	Molarity [pmol/l]	Observations
1	43.00	35	125.00	5,411.3	Lower Marker
2	47.45	71	34.77	742.8	
3	49.19	87	27.61	478.3	
4	65.03	262	508.15	2,936.3	
5	66.77	282	266.35	1,432.2	
6	67.19	287	955.16	5,050.6	
7	79.14	446	12.25	41.6	
8	80.29	466	7.98	26.0	
9	113.00	10,380	75.00	10.9	Upper Marker

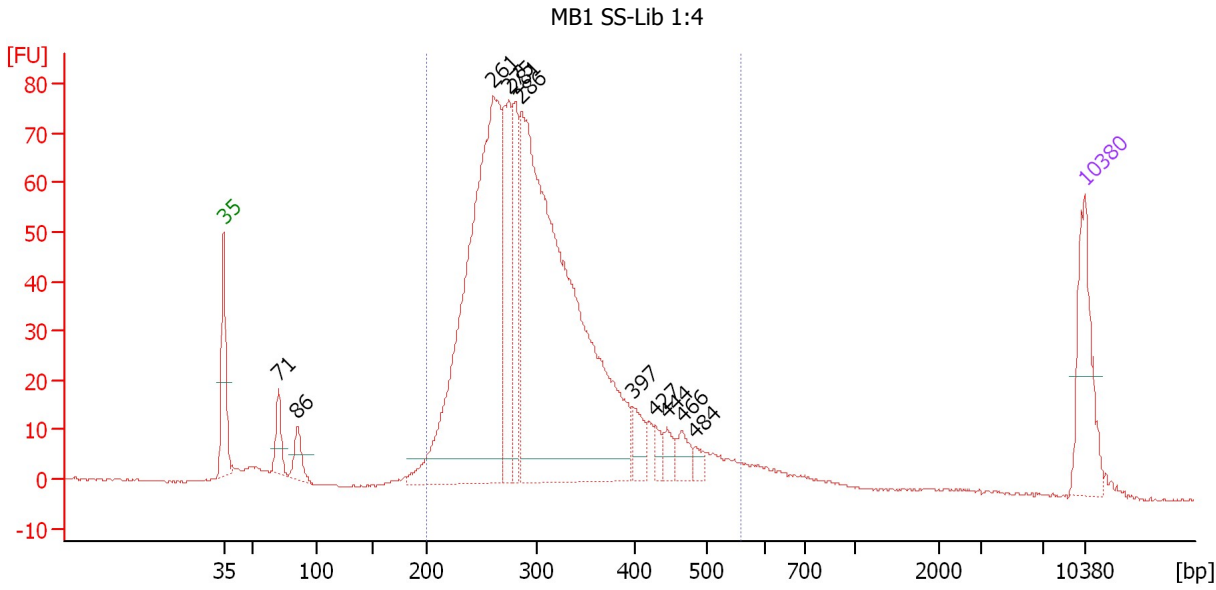
Region table for sample 3 : HB3 SS-Lib 1:5

From [bp]	To [bp]	Average Size [bp]	Molarity [pmol/l]	Conc. [pg/μl]	Co Corr. lor Area	% of Total	Size distribution in CV [%]
200	505	305	9,794.7	1,895.18	1,285.3	89	18.9

Assay Class: High Sensitivity DNA Assay
 Data Path: C:\...ents and Settings\Bioanalyzer\2014-02-24\2014-02-24_005.xad

Created: 2/24/2014 5:37:55 PM
 Modified: 2/24/2014 6:21:10 PM

Electropherogram Summary Continued ...



Overall Results for sample 4 : MB1 SS-Lib 1:4

Number of peaks found: 11 Corr. Area 1: 1,259.9
 Noise: 0.2

Peak table for sample 4 : MB1 SS-Lib 1:4

Peak	Aligned Migration Time [s]	Size [bp]	Conc. [pg/μl]	Molarity [pmol/l]	Observations
1	43.00	35	125.00	5,411.3	Lower Marker
2	47.46	71	41.09	876.1	
3	48.98	86	34.71	615.2	
4	64.89	261	727.43	4,229.8	
5	66.19	275	169.20	931.5	
6	66.71	281	113.52	611.9	
7	67.19	286	947.31	5,010.9	
8	76.24	397	31.00	118.3	
9	78.07	427	15.01	53.2	
10	79.02	444	16.17	55.2	
11	80.28	466	23.01	74.9	
12	81.36	484	11.28	35.3	
13	113.00	10,380	75.00	10.9	Upper Marker

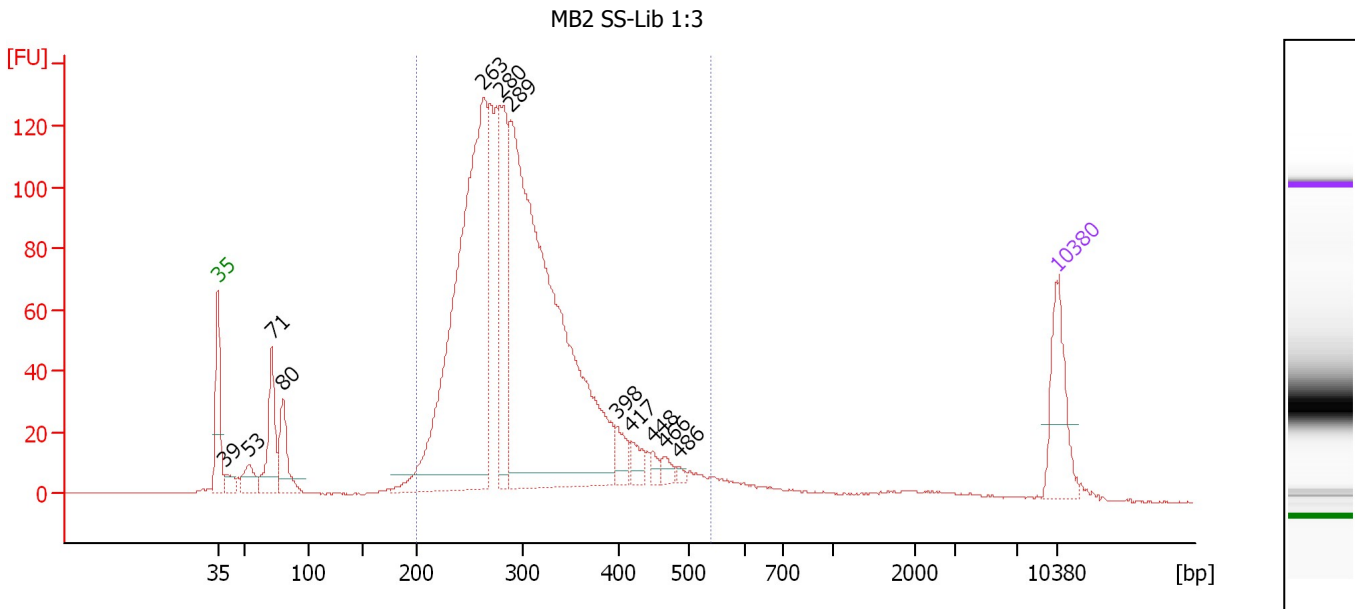
Region table for sample 4 : MB1 SS-Lib 1:4

From [bp]	To [bp]	Average Size [bp]	Molarity [pmol/l]	Conc. [pg/μl]	Co Corr. lor Area	% of Total	Size distribution in CV [%]
200	558	309	10,873.5	2,101.18	1,259.9	90	22.0

Assay Class: High Sensitivity DNA Assay
 Data Path: C:\...ents and Settings\Bioanalyzer\2014-02-24\2014-02-24_005.xad

Created: 2/24/2014 5:37:55 PM
 Modified: 2/24/2014 6:21:10 PM

Electropherogram Summary Continued ...



Overall Results for sample 5 : MB2 SS-Lib 1:3

Number of peaks found: 12 Corr. Area 1: 1,912.6
 Noise: 0.2

Peak table for sample 5 : MB2 SS-Lib 1:3

Peak	Aligned Migration Time [s]	Size [bp]	Conc. [pg/μl]	Molarity [pmol/l]	Observations
1	43.00	35	125.00	5,411.3	Lower Marker
2	43.58	39	21.52	839.1	
3	45.58	53	40.38	1,151.5	
4	47.49	71	116.35	2,470.6	
5	48.43	80	85.73	1,618.7	
6	65.12	263	841.96	4,848.0	
7	66.59	280	193.41	1,047.8	
8	67.43	289	1,066.59	5,588.0	
9	76.29	398	31.26	119.1	
10	77.49	417	24.85	90.2	
11	79.27	448	11.39	38.5	
12	80.29	466	13.45	43.8	
13	81.45	486	5.39	16.8	
14	113.00	10,380	75.00	10.9	Upper Marker

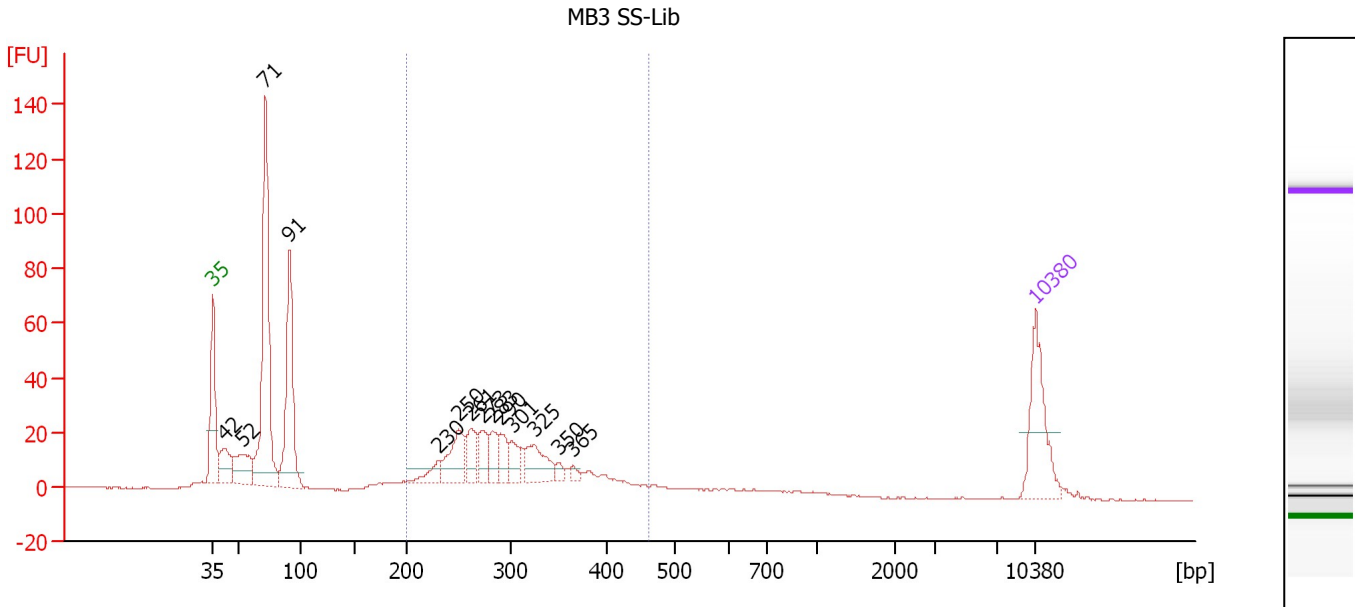
Region table for sample 5 : MB2 SS-Lib 1:3

From [bp]	To [bp]	Average Size [bp]	Molarity [pmol/l]	Conc. [pg/μl]	Co Corr. lor Area	% of Total	Size distribution in CV [%]
200	540	303	13,163.5	2,522.28	1,912.6	87	20.0

Assay Class: High Sensitivity DNA Assay
 Data Path: C:\...ents and Settings\Bioanalyzer\2014-02-24\2014-02-24_005.xad

Created: 2/24/2014 5:37:55 PM
 Modified: 2/24/2014 6:21:10 PM

Electropherogram Summary Continued ...



Overall Results for sample 6 : MB3 SS-Lib

Number of peaks found: 14 Corr. Area 1: 370.5
 Noise: 0.2

Peak table for sample 6 : MB3 SS-Lib

Peak	Aligned Migration Time [s]	Size [bp]	Conc. [pg/μl]	Molarity [pmol/l]	Observations
1	43.00	35	125.00	5,411.3	Lower Marker
2	44.00	42	55.45	2,017.0	
3	45.50	52	71.11	2,059.2	
4	47.49	71	358.18	7,609.4	
5	49.53	91	214.00	3,572.9	
6	62.19	230	22.62	148.9	
7	63.96	250	64.19	388.8	
8	64.96	261	38.56	223.6	
9	66.00	273	34.96	194.0	
10	66.86	283	28.34	151.8	
11	67.54	290	30.72	160.2	
12	68.45	301	25.99	131.0	
13	70.40	325	52.55	245.1	
14	72.40	350	8.35	36.2	
15	73.67	365	7.34	30.5	
16	113.00	10,380	75.00	10.9	Upper Marker

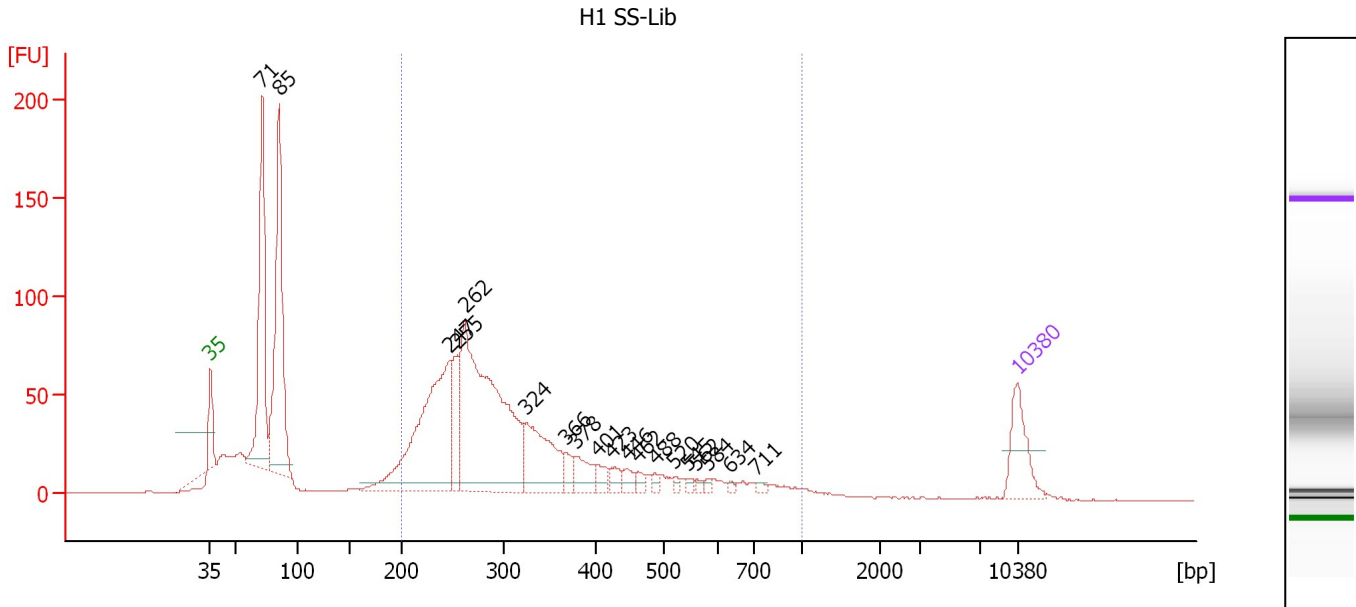
Region table for sample 6 : MB3 SS-Lib

From [bp]	To [bp]	Average Size [bp]	Molarity [pmol/l]	Conc. [pg/μl]	Co Corr. lor Area	% of Total	Size distribution in CV [%]
200	464	302	2,714.4	519.47	370.5	43	18.5

Assay Class: High Sensitivity DNA Assay
 Data Path: C:\...ents and Settings\Bioanalyzer\2014-02-24\2014-02-24_005.xad

Created: 2/24/2014 5:37:55 PM
 Modified: 2/24/2014 6:21:10 PM

Electropherogram Summary Continued ...



Overall Results for sample 7 : H1 SS-Lib

Number of peaks found: 19 Corr. Area 1: 1,297.8
 Noise: 0.2

Peak table for sample 7 : H1 SS-Lib

Peak	Aligned Migration Time [s]	Size [bp]	Conc. [pg/μl]	Molarity [pmol/l]	Observations
1	43.00	35	125.00	5,411.3	Lower Marker
2	47.48	71	448.82	9,543.1	
3	48.96	85	526.02	9,339.0	
4	63.67	247	508.28	3,120.3	
5	64.36	255	104.70	623.0	
6	65.05	262	712.80	4,115.3	
7	70.37	324	186.97	873.0	
8	73.75	366	25.73	106.4	
9	74.72	378	49.06	196.5	
10	76.52	401	25.80	97.6	
11	77.82	423	19.43	69.6	
12	79.16	446	21.06	71.5	
13	80.08	462	15.48	50.8	
14	81.56	488	8.90	27.6	
15	83.22	520	6.93	20.2	
16	84.38	545	8.49	23.6	
17	85.17	562	6.45	17.4	
18	86.18	584	6.30	16.3	
19	88.03	634	5.36	12.8	
20	90.34	711	6.54	13.9	
21	113.00	10,380	75.00	10.9	Upper Marker

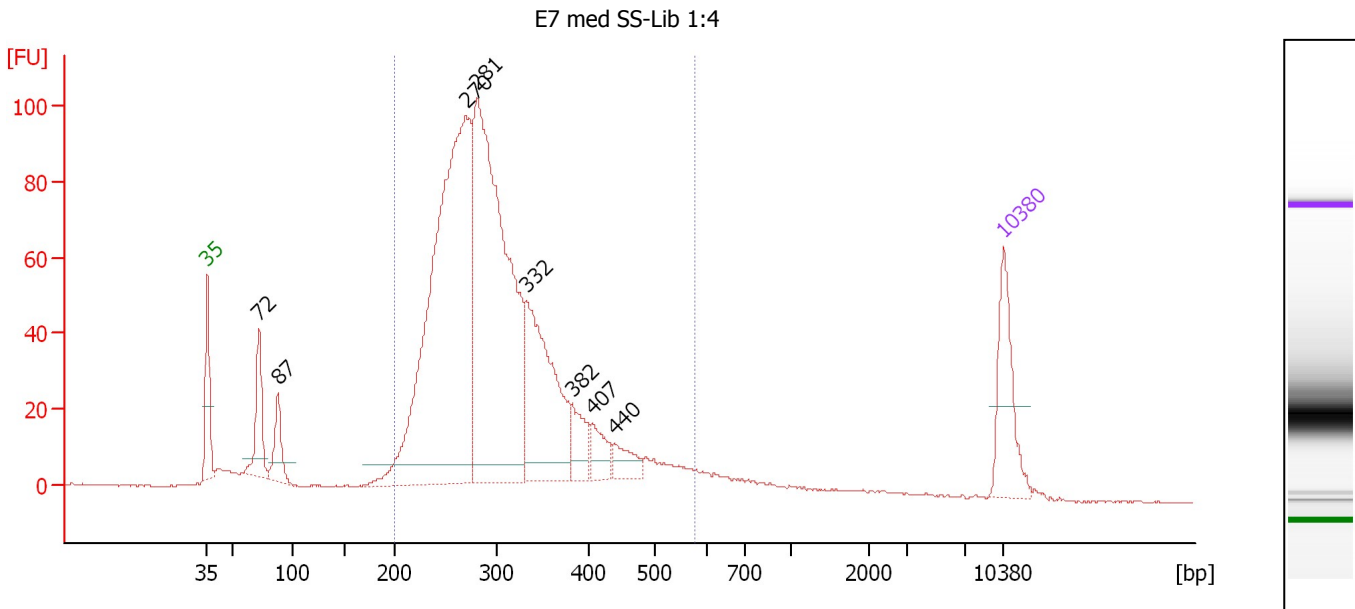
Region table for sample 7 : H1 SS-Lib

From [bp]	To [bp]	Average Size [bp]	Molarity [pmol/l]	Conc. [pg/μl]	Co Corr. lor Area	% of Total	Size distribution in CV [%]
200	1,000	335	9,542.0	1,845.67	1,297.8	61	39.3

Assay Class: High Sensitivity DNA Assay
 Data Path: C:\...ents and Settings\Bioanalyzer\2014-02-24\2014-02-24_005.xad

Created: 2/24/2014 5:37:55 PM
 Modified: 2/24/2014 6:21:10 PM

Electropherogram Summary Continued ...



Overall Results for sample 8 : E7 med SS-Lib 1:4

Number of peaks found: 8 Corr. Area 1: 1,504.6
 Noise: 0.2

Peak table for sample 8 : E7 med SS-Lib 1:4

Peak	Aligned Migration Time [s]	Size [bp]	Conc. [pg/μl]	Molarity [pmol/l]	Observations
1	43.00	35	125.00	5,411.3	Lower Marker
2	47.54	72	95.60	2,016.6	
3	49.18	87	62.67	1,085.9	
4	65.72	270	865.49	4,857.2	
5	66.71	281	733.27	3,952.9	
6	71.02	332	260.13	1,185.4	
7	75.05	382	46.61	184.7	
8	76.88	407	35.15	130.9	
9	78.80	440	31.53	108.6	
10	113.00	10,380	75.00	10.9	Upper Marker

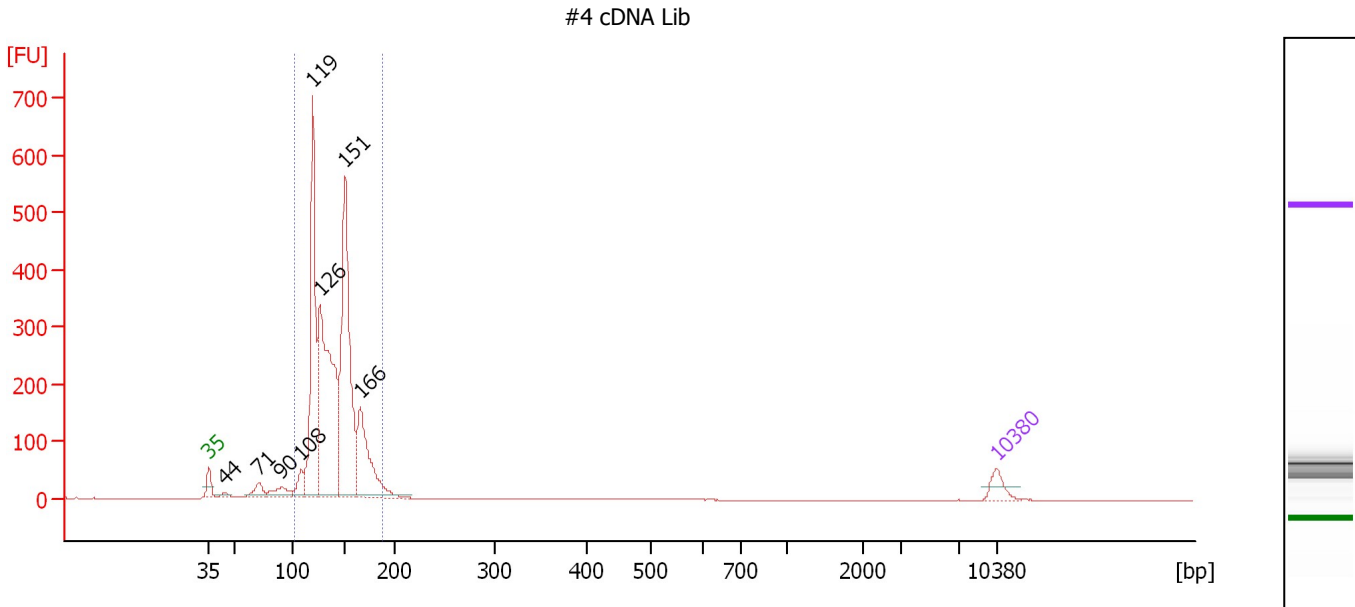
Region table for sample 8 : E7 med SS-Lib 1:4

From [bp]	To [bp]	Average Size [bp]	Molarity [pmol/l]	Conc. [pg/μl]	Co Corr. lor Area	% of Total	Size distribution in CV [%]
200	576	307	11,089.6	2,131.24	1,504.6	87	22.5

Assay Class: High Sensitivity DNA Assay
 Data Path: C:\...ents and Settings\Bioanalyzer\2014-02-24\2014-02-24_005.xad

Created: 2/24/2014 5:37:55 PM
 Modified: 2/24/2014 6:21:10 PM

Electropherogram Summary Continued ...



Overall Results for sample 9 : #4 cDNA Lib

Number of peaks found: 8 Corr. Area 1: 2,897.8
 Noise: 0.1

Peak table for sample 9 : #4 cDNA Lib

Peak	Aligned Migration Time [s]	Size [bp]	Conc. [pg/μl]	Molarity [pmol/l]	Observations
1	43.00	35	125.00	5,411.3	Lower Marker
2	44.42	44	30.94	1,054.4	
3	47.45	71	108.45	2,316.1	
4	49.44	90	124.74	2,102.8	
5	51.19	108	134.75	1,897.7	
6	52.24	119	1,557.02	19,817.0	
7	52.90	126	2,061.71	24,725.2	
8	55.12	151	1,886.25	18,945.9	
9	56.45	166	757.92	6,929.9	
10	113.00	10,380	75.00	10.9	Upper Marker

Region table for sample 9 : #4 cDNA Lib

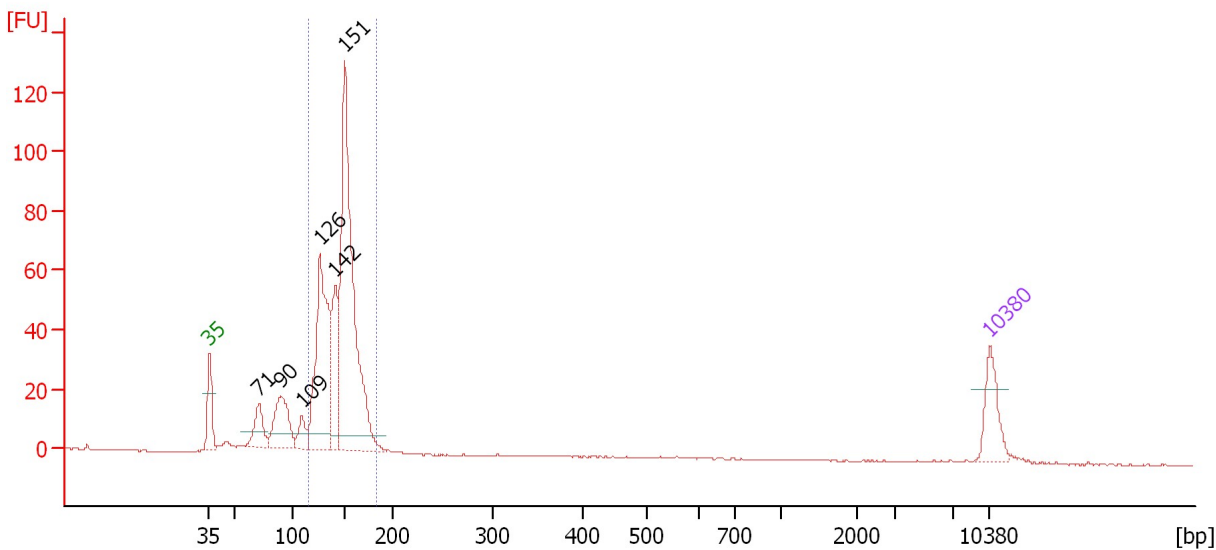
From [bp]	To [bp]	Average Size [bp]	Molarity [pmol/l]	Conc. [pg/μl]	Co Corr. lor Area	% of Total	Size distribution in CV [%]
101	188	140	69,528.0	6,328.51	2,897.8	92	12.9

Assay Class: High Sensitivity DNA Assay
 Data Path: C:\...ents and Settings\Bioanalyzer\2014-02-24\2014-02-24_005.xad

Created: 2/24/2014 5:37:55 PM
 Modified: 2/24/2014 6:21:10 PM

Electropherogram Summary Continued ...

#11 cDNA Lib



Overall Results for sample 10 : #11 cDNA Lib

Number of peaks found: 6 Corr. Area 1: 512.8
 Noise: 0.2

Peak table for sample 10 : #11 cDNA Lib

Peak	Aligned Migration Time [s]	Size [bp]	Conc. [pg/μl]	Molarity [pmol/l]	Observations
1	43.00	35	125.00	5,411.3	Lower Marker
2	47.45	71	96.56	2,062.7	
3	49.41	90	177.60	3,003.4	
4	51.28	109	54.43	760.1	
5	52.90	126	517.35	6,201.3	
6	54.29	142	205.72	2,200.2	
7	55.15	151	924.27	9,263.9	
8	113.00	10,380	75.00	10.9	Upper Marker

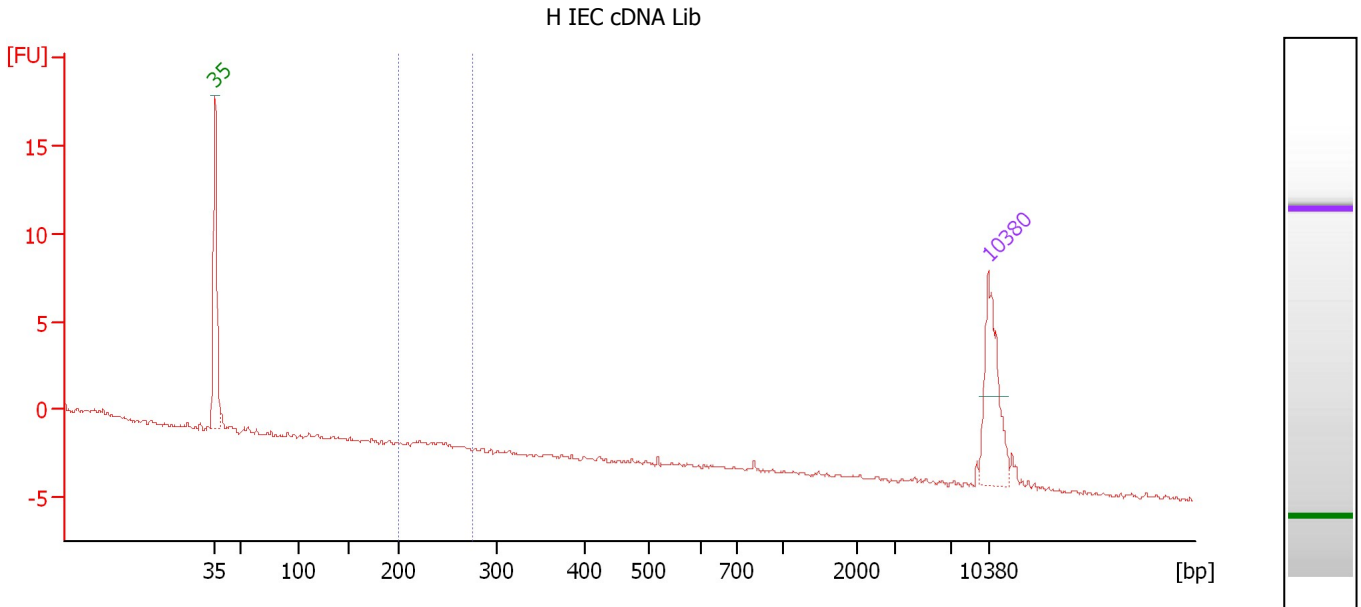
Region table for sample 10 : #11 cDNA Lib

From [bp]	To [bp]	Average Size [bp]	Molarity [pmol/l]	Conc. [pg/μl]	Co Corr. lor Area	% of Total	Size distribution in CV [%]
115	183	146	17,388.0	1,660.97	512.8	79	9.8

Assay Class: High Sensitivity DNA Assay
 Data Path: C:\...ents and Settings\Bioanalyzer\2014-02-24\2014-02-24_005.xad

Created: 2/24/2014 5:37:55 PM
 Modified: 2/24/2014 6:21:10 PM

Electropherogram Summary Continued ...



Overall Results for sample 11 : H IEC cDNA Lib

Number of peaks found: 0 Corr. Area 1: 0.0
 Noise: 0.1

Peak table for sample 11 : H IEC cDNA Lib

Peak	Aligned Migration Time [s]	Size [bp]	Conc. [pg/μl]	Molarity [pmol/l]	Observations
1	43.00	35	125.00	5,411.3	Lower Marker
2	113.00	10,380	75.00	10.9	Upper Marker

Region table for sample 11 : H IEC cDNA Lib

From [bp]	To [bp]	Average Size [bp]	Molarity [pmol/l]	Conc. [pg/μl]	Co Corr. lor Area	% of Total	Size distribution in CV [%]
200	277	0	0.0	0.00	0.0	0	0.0

Assay Class: High Sensitivity DNA Assay
Data Path: C:\...ents and Settings\Bioanalyzer\2014-02-24\2014-02-24_005.xad

Created: 2/24/2014 5:37:55 PM
Modified: 2/24/2014 6:21:10 PM

Gel Image

