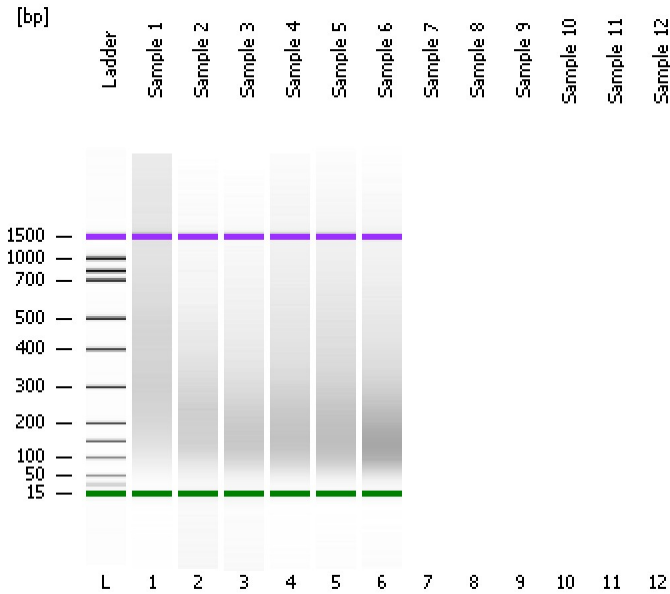


Assay Class: DNA 1000
Data Path: C:\...ents and Settings\Bioanalyzer\2014-02-25\2014-02-25_003.xad

Created: 2/25/2014 2:24:15 PM
Modified: 2/25/2014 2:54:47 PM

Electrophoresis File Run Summary



Instrument Information:

Instrument Name: DE13701086 Firmware: C.01.069
Serial#: DE13701086 Type: G2938B

Assay Information:

Assay Origin Path: C:\Program Files\Agilent\2100 bioanalyzer\2100 expert\assays\dsDNA\DNA 1000 Series II.xsy

Assay Class: DNA 1000

Version: 2.3

Assay Comments: DNA Analysis 25 -1000 bp

© Copyright 2003-2009 Agilent Technologies, Inc.

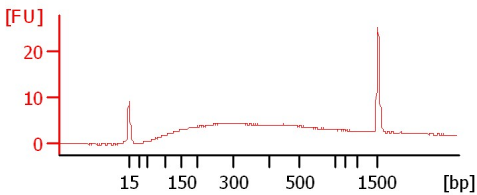
Chip Information:

Chip Lot #:

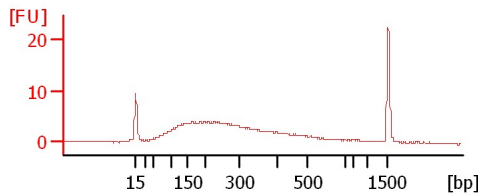
Reagent Kit Lot #:

Chip Comments:

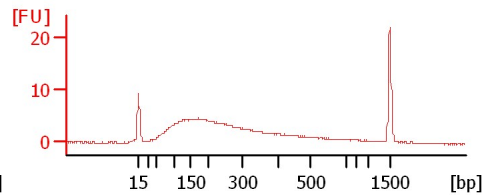
Sample 1



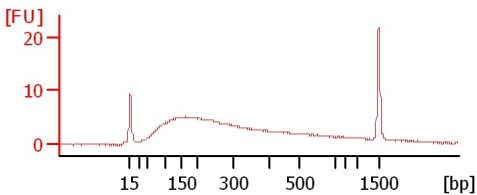
Sample 2



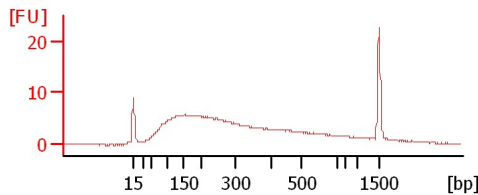
Sample 3



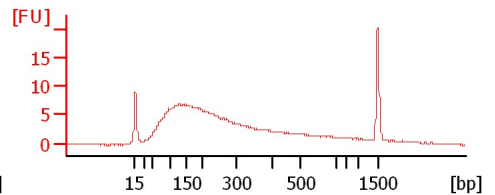
Sample 4



Sample 5



Sample 6



Assay Class: DNA 1000
 Data Path: C:\...ents and Settings\Bioanalyzer\2014-02-25\2014-02-25_003.xad

Created: 2/25/2014 2:24:15 PM
 Modified: 2/25/2014 2:54:47 PM

Electrophoresis File Run Summary (Chip Summary)

Sample Name	Sample Comment	Rest. Digest	Status	Observation	Result Label	Result Color
Sample 1		<input type="checkbox"/>	✓			
Sample 2		<input type="checkbox"/>	✓			
Sample 3		<input type="checkbox"/>	✓			
Sample 4		<input type="checkbox"/>	✓			
Sample 5		<input type="checkbox"/>	✓			
Sample 6		<input type="checkbox"/>	✓			
Sample 7		<input type="checkbox"/>				
Sample 8		<input type="checkbox"/>				
Sample 9		<input type="checkbox"/>				
Sample 10		<input type="checkbox"/>				
Sample 11		<input type="checkbox"/>				
Sample 12		<input type="checkbox"/>				
Ladder		<input type="checkbox"/>	✓			

Chip Lot #

Reagent Kit Lot #

Chip Comments :

Assay Class: DNA 1000
Data Path: C:\...ents and Settings\Bioanalyzer\2014-02-25\2014-02-25_003.xad

Created: 2/25/2014 2:24:15 PM
Modified: 2/25/2014 2:54:47 PM

Electrophoresis Assay Details

General Analysis Settings

Number of Available Sample and Ladder Wells (Max.) : 13
Minimum Visible Range [s] : 30
Maximum Visible Range [s] : 129
Start Analysis Time Range [s] : 30
End Analysis Time Range [s] : 128.95
Ladder Concentration [ng/μl] : 44
Uses Standard Area for Ladder Fragments
Lower Marker Concentration [ng/μl] : 4.2
Upper Marker Concentration [ng/μl] : 2.1
Used Upper Marker for Quantitation
Standard Curve Fit is Point to Point
Show Data Aligned to Lower and Upper Marker

Integrator Settings

Integration Start Time [s] : 30
Integration End Time [s] : 128.95
Slope Threshold : 0.5
Height Threshold [FU] : 20
Area Threshold : 0.1
Width Threshold [s] : 0.5
Baseline Plateau [s] : 0.5

Filter Settings

Filter Width [s] : 0.5
Polynomial Order : 4

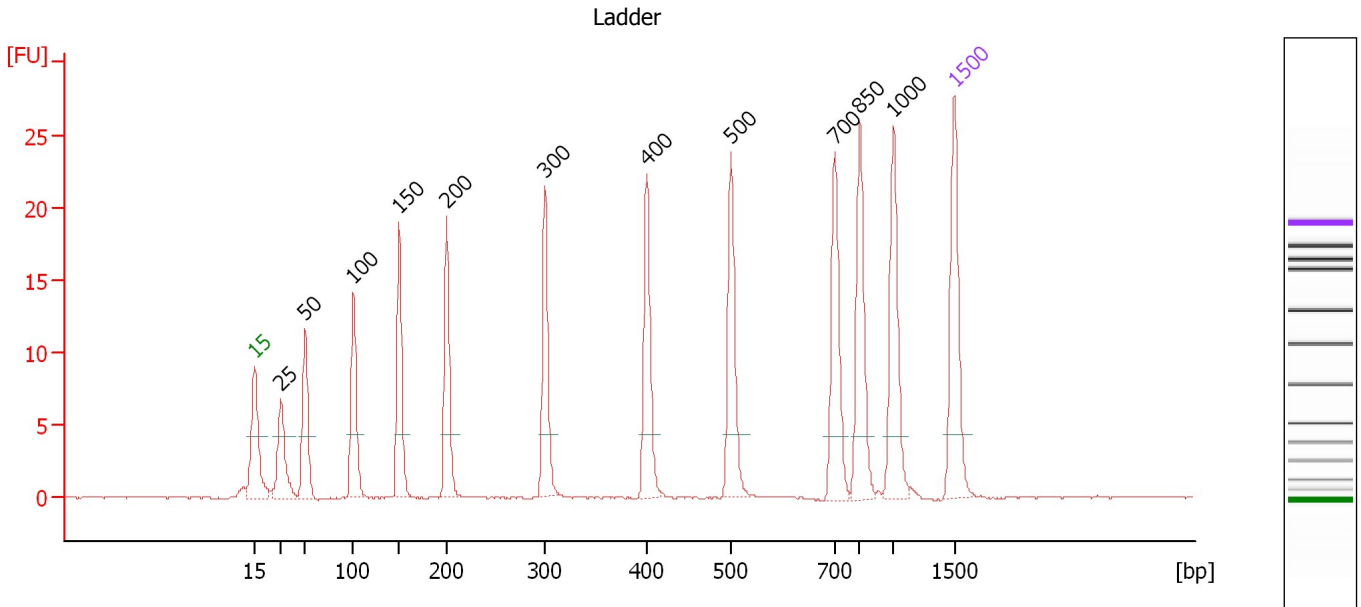
Ladder

Ladder Peak	Size	Area
1	15	25
2	25	26
3	50	34
4	100	41
5	150	45
6	200	52
7	300	63
8	400	76
9	500	83
10	700	88
11	850	86
12	1000	90
13	1500	52

Assay Class: DNA 1000
 Data Path: C:\...ents and Settings\Bioanalyzer\2014-02-25\2014-02-25_003.xad

Created: 2/25/2014 2:24:15 PM
 Modified: 2/25/2014 2:54:47 PM

Electropherogram Summary



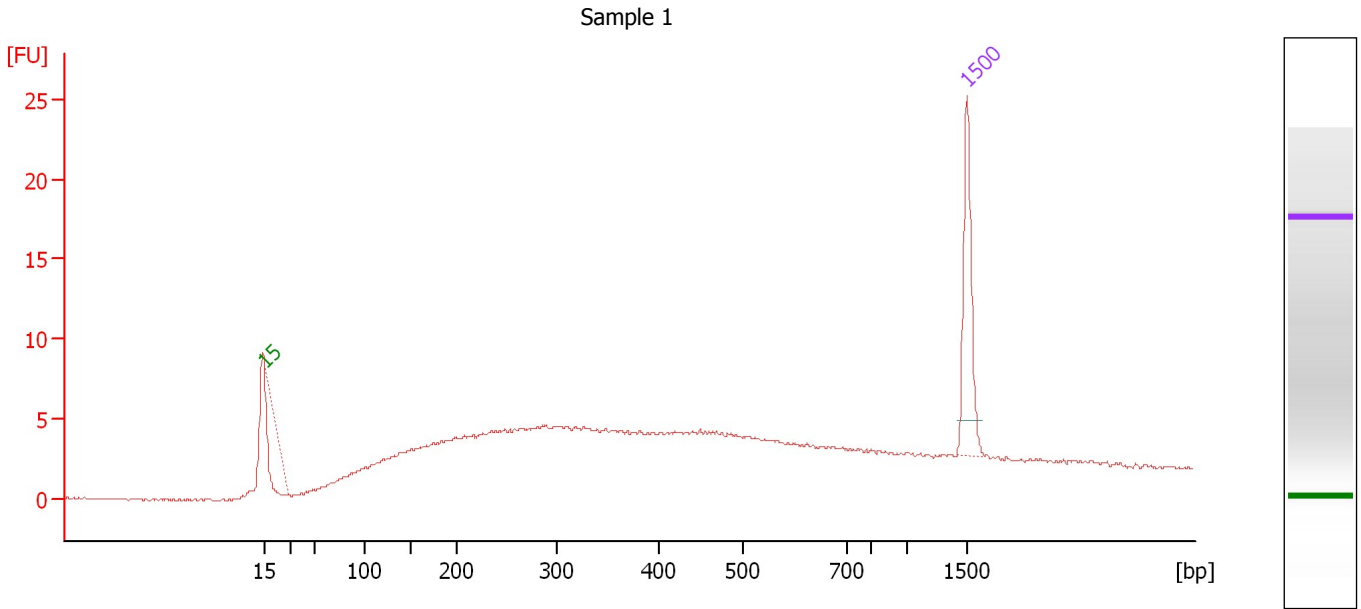
Peak table for Ladder

Peak	Size [bp]	Conc. [ng/μl]	Molarity [nmol/l]	Observations
1	15	4.20	424.2	Lower Marker
2	25	4.00	242.4	Ladder Peak
3	50	4.00	121.2	Ladder Peak
4	100	4.00	60.6	Ladder Peak
5	150	4.00	40.4	Ladder Peak
6	200	4.00	30.3	Ladder Peak
7	300	4.00	20.2	Ladder Peak
8	400	4.00	15.2	Ladder Peak
9	500	4.00	12.1	Ladder Peak
10	700	4.00	8.7	Ladder Peak
11	850	4.00	7.1	Ladder Peak
12	1,000	4.00	6.1	Ladder Peak
13	1,500	2.10	2.1	Upper Marker

Assay Class: DNA 1000
Data Path: C:\...ents and Settings\Bioanalyzer\2014-02-25\2014-02-25_003.xad

Created: 2/25/2014 2:24:15 PM
Modified: 2/25/2014 2:54:47 PM

Electropherogram Summary Continued ...



Overall Results for sample 1 : Sample 1

Number of peaks found: 0

Peak table for sample 1 : Sample 1

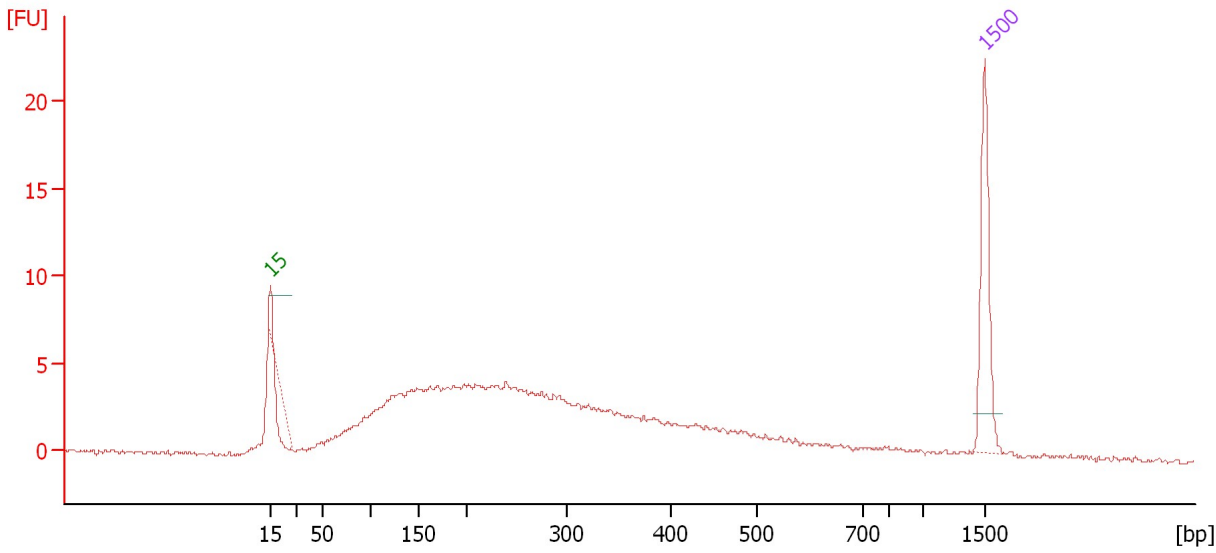
Peak	Size [bp]	Conc. [ng/μl]	Molarity [nmol/l]	Observations
1	15	4.20	424.2	Lower Marker
2	1,500	2.10	2.1	Upper Marker

Assay Class: DNA 1000
Data Path: C:\...ents and Settings\Bioanalyzer\2014-02-25\2014-02-25_003.xad

Created: 2/25/2014 2:24:15 PM
Modified: 2/25/2014 2:54:47 PM

Electropherogram Summary Continued ...

Sample 2



Overall Results for sample 2 : Sample 2

Number of peaks found: 0

Peak table for sample 2 : Sample 2

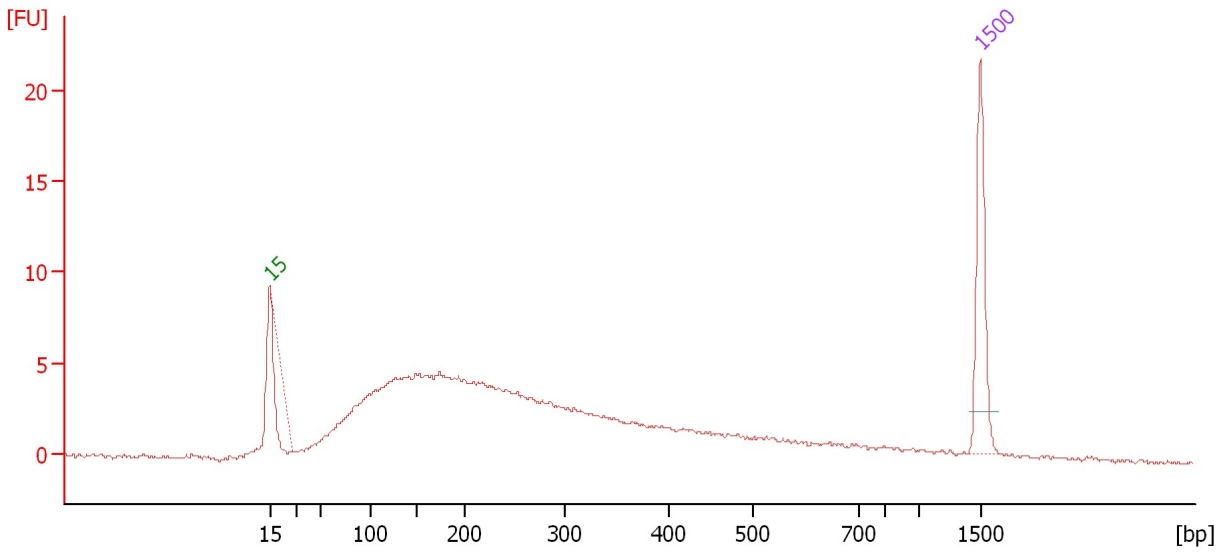
Peak	Size [bp]	Conc. [ng/μl]	Molarity [nmol/l]	Observations
1	15	4.20	424.2	Lower Marker
2	1,500	2.10	2.1	Upper Marker

Assay Class: DNA 1000
Data Path: C:\...ents and Settings\Bioanalyzer\2014-02-25\2014-02-25_003.xad

Created: 2/25/2014 2:24:15 PM
Modified: 2/25/2014 2:54:47 PM

Electropherogram Summary Continued ...

Sample 3



Overall Results for sample 3 : Sample 3

Number of peaks found: 0

Peak table for sample 3 : Sample 3

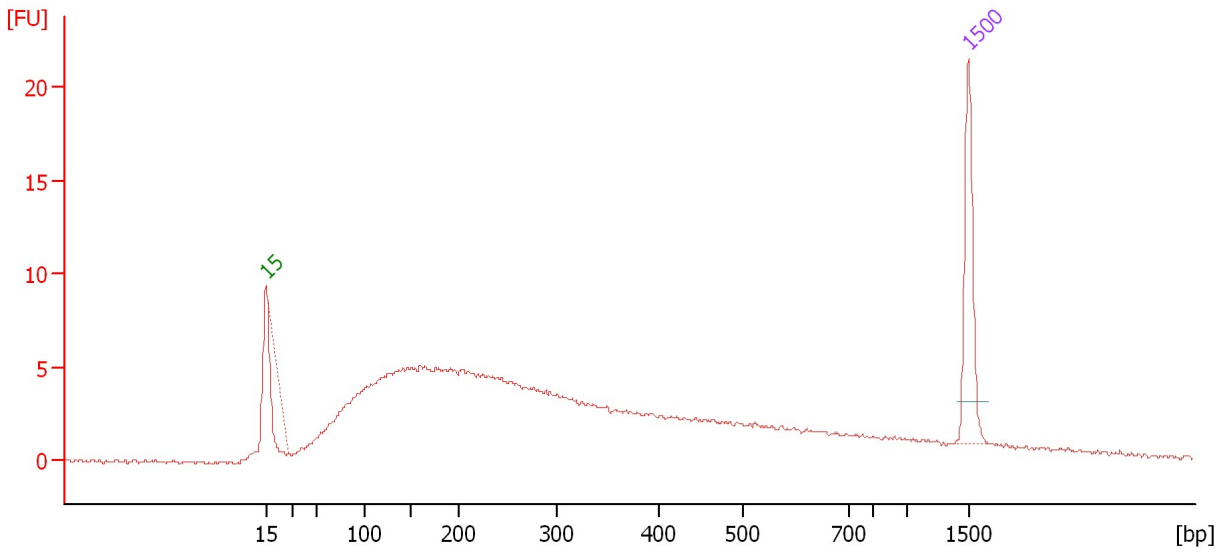
Peak	Size [bp]	Conc. [ng/μl]	Molarity [nmol/l]	Observations
1	15	4.20	424.2	Lower Marker
2	1,500	2.10	2.1	Upper Marker

Assay Class: DNA 1000
Data Path: C:\...ents and Settings\Bioanalyzer\2014-02-25\2014-02-25_003.xad

Created: 2/25/2014 2:24:15 PM
Modified: 2/25/2014 2:54:47 PM

Electropherogram Summary Continued ...

Sample 4



Overall Results for sample 4 : Sample 4

Number of peaks found: 0

Peak table for sample 4 : Sample 4

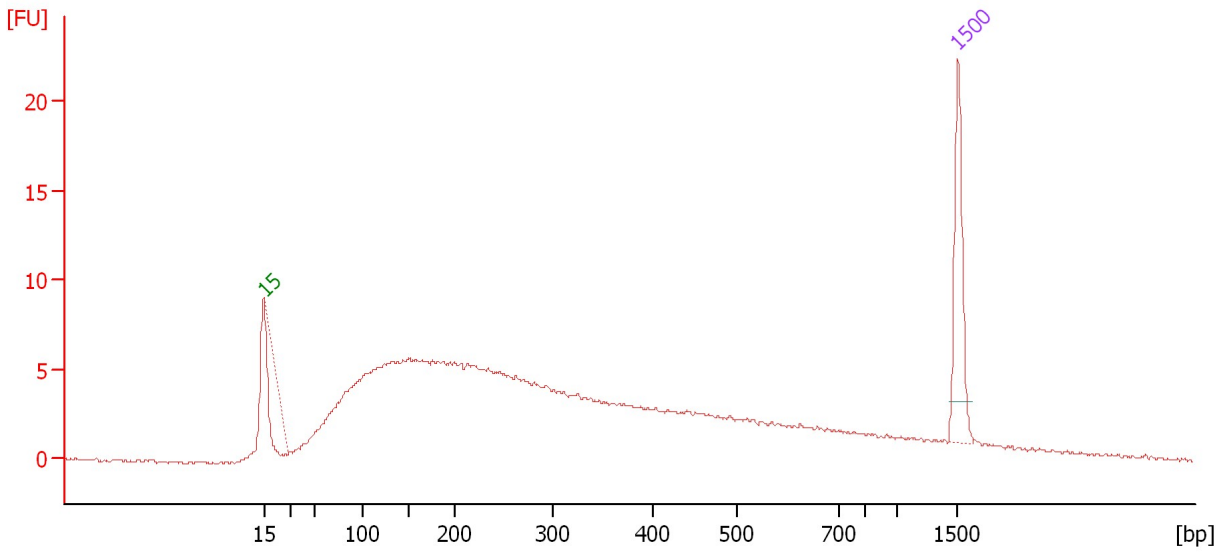
Peak	Size [bp]	Conc. [ng/μl]	Molarity [nmol/l]	Observations
1	15	4.20	424.2	Lower Marker
2	1,500	2.10	2.1	Upper Marker

Assay Class: DNA 1000
Data Path: C:\...ents and Settings\Bioanalyzer\2014-02-25\2014-02-25_003.xad

Created: 2/25/2014 2:24:15 PM
Modified: 2/25/2014 2:54:47 PM

Electropherogram Summary Continued ...

Sample 5



Overall Results for sample 5 : Sample 5

Number of peaks found: 0

Peak table for sample 5 : Sample 5

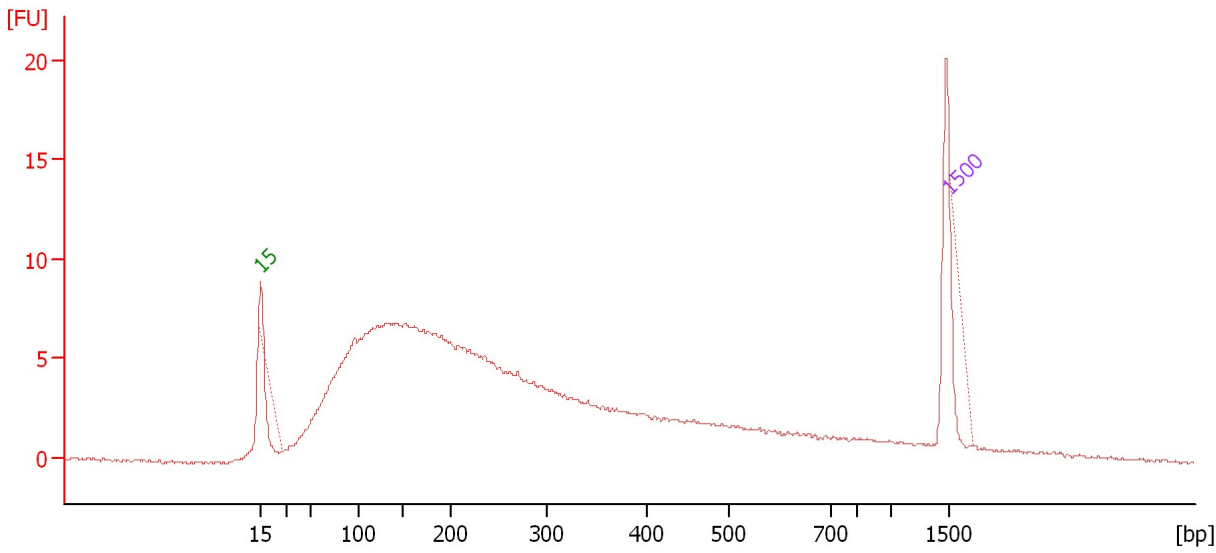
Peak	Size [bp]	Conc. [ng/μl]	Molarity [nmol/l]	Observations
1	15	4.20	424.2	Lower Marker
2	1,500	2.10	2.1	Upper Marker

Assay Class: DNA 1000
Data Path: C:\...ents and Settings\Bioanalyzer\2014-02-25\2014-02-25_003.xad

Created: 2/25/2014 2:24:15 PM
Modified: 2/25/2014 2:54:47 PM

Electropherogram Summary Continued ...

Sample 6



Overall Results for sample 6 : Sample 6

Number of peaks found: 0

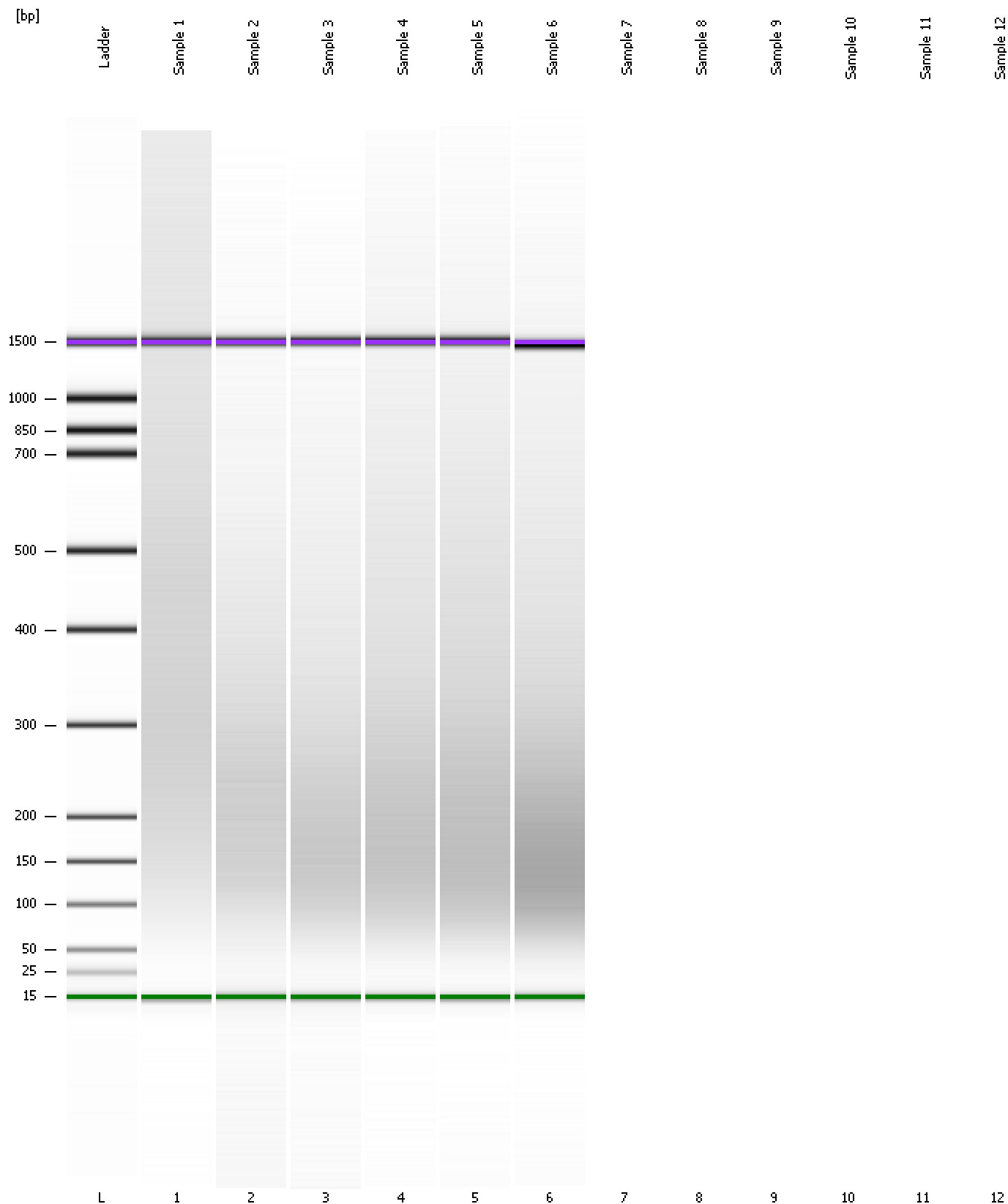
Peak table for sample 6 : Sample 6

Peak	Size [bp]	Conc. [ng/μl]	Molarity [nmol/l]	Observations
1	15	4.20	424.2	Lower Marker
2	1,500	2.10	2.1	Upper Marker

Assay Class: DNA 1000
Data Path: C:\...ents and Settings\Bioanalyzer\2014-02-25\2014-02-25_003.xad

Created: 2/25/2014 2:24:15 PM
Modified: 2/25/2014 2:54:47 PM

Gel Image



Assay Class: DNA 1000
Data Path: C:\...ents and Settings\Bioanalyzer\2014-02-25\2014-02-25_003.xad

Created: 2/25/2014 2:24:15 PM
Modified: 2/25/2014 2:54:47 PM

Invalid Samples

Sample 7 has not been run, no results available.

Sample 8 has not been run, no results available.

Sample 9 has not been run, no results available.

Sample 10 has not been run, no results available.

Sample 11 has not been run, no results available.

Sample 12 has not been run, no results available.