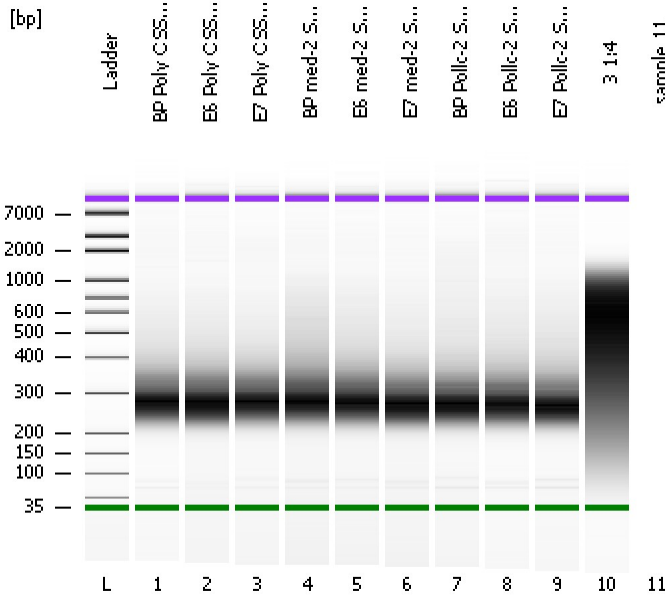


Assay Class: High Sensitivity DNA Assay  
Data Path: C:\...ents and Settings\Bioanalyzer\2014-02-25\2014-02-25\_005.xad

Created: 2/25/2014 5:37:28 PM  
Modified: 2/25/2014 6:16:42 PM

**Electrophoresis File Run Summary**



Instrument Information:

Instrument Name: DE13701086      Firmware: C.01.069  
Serial#: DE13701086      Type: G2938B

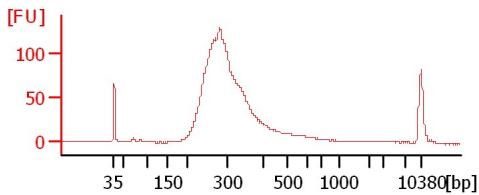
Assay Information:

Assay Origin Path: C:\Program Files\Agilent\2100 bioanalyzer\2100 expert\assays\dsDNA\High Sensitivity DNA.xsy  
Assay Class: High Sensitivity DNA Assay  
Version: 1.03  
Assay Comments: Copyright © 2003-2010 Agilent Technologies

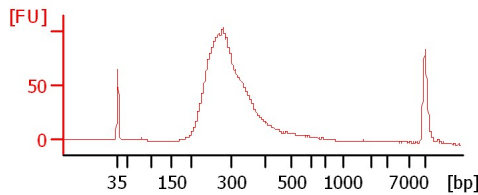
Chip Information:

Chip Lot #:   
Reagent Kit Lot #:   
Chip Comments:

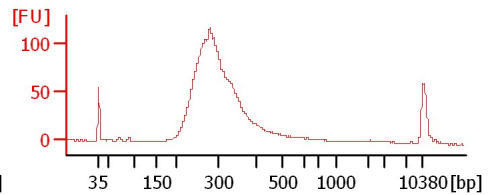
**BP Poly C SS-Lib 1:5**



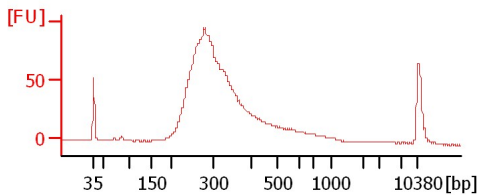
**E6 Poly C SS-Lib 1:7**



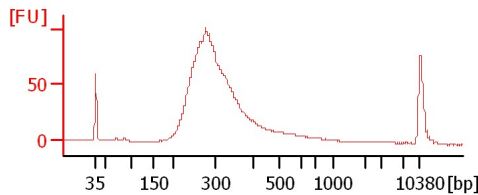
**E7 Poly C SS-Lib 1:4**



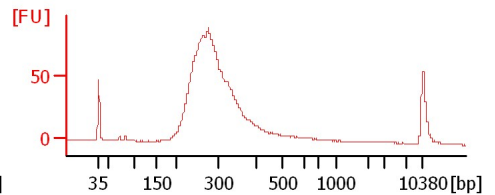
**BP med-2 SS-Lib 1:6**



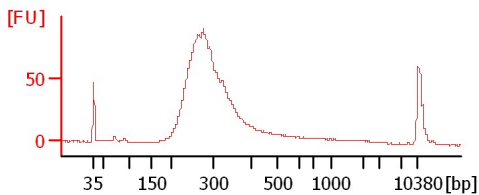
**E6 med-2 SS-Lib 1:7**



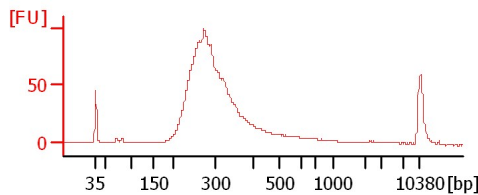
**E7 med-2 SS-Lib 1:8**



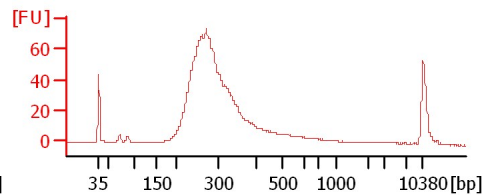
**BP Pollc-2 SS-Lib 1:6**



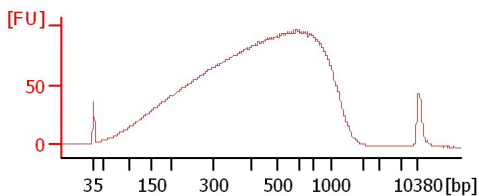
**E6 Pollc-2 SS-Lib 1:7**



**E7 Pollc-2 SS-Lib 1:6**



**3 1:4**



Assay Class: High Sensitivity DNA Assay  
Data Path: C:\...ents and Settings\Bioanalyzer\2014-02-25\2014-02-25\_005.xad

Created: 2/25/2014 5:37:28 PM  
Modified: 2/25/2014 6:16:42 PM

**Electrophoresis File Run Summary (Chip Summary)**

Sample Name	Sample Comment	Rest. Digest	Status	Observation	Result Label	Result Color
BP Poly C SS-Lib 1:5		<input type="checkbox"/>	✓			
E6 Poly C SS-Lib 1:7		<input type="checkbox"/>	✓			
E7 Poly C SS-Lib 1:4		<input type="checkbox"/>	✓			
BP med-2 SS-Lib 1:6		<input type="checkbox"/>	✓			
E6 med-2 SS-Lib 1:7		<input type="checkbox"/>	✓			
E7 med-2 SS-Lib 1:8		<input type="checkbox"/>	✓			
BP Pollc-2 SS-Lib 1:6		<input type="checkbox"/>	✓			
E6 Pollc-2 SS-Lib 1:7		<input type="checkbox"/>	✓			
E7 Pollc-2 SS-Lib 1:6		<input type="checkbox"/>	✓			
3 1:4		<input type="checkbox"/>	✓			
sample 11		<input type="checkbox"/>				
Ladder		<input type="checkbox"/>	✓			

**Chip Lot #**

**Reagent Kit Lot #**

**Chip Comments :**

Assay Class: High Sensitivity DNA Assay  
Data Path: C:\...ents and Settings\Bioanalyzer\2014-02-25\2014-02-25\_005.xad

Created: 2/25/2014 5:37:28 PM  
Modified: 2/25/2014 6:16:42 PM

**Electrophoresis Assay Details**

**General Analysis Settings**

Number of Available Sample and Ladder Wells (Max.) : 12  
Minimum Visible Range [s] : 32  
Maximum Visible Range [s] : 138  
Start Analysis Time Range [s] : 33  
End Analysis Time Range [s] : 137.5  
Ladder Concentration [pg/μl] : 1950  
Uses Standard Area for Ladder Fragments  
Lower Marker Concentration [pg/μl] : 125  
Upper Marker Concentration [pg/μl] : 75  
Used Upper Marker for Quantitation  
Standard Curve Fit is Point to Point  
Show Data Aligned to Lower and Upper Marker

**Integrator Settings**

Integration Start Time [s] : 33.05  
Integration End Time [s] : 137  
Slope Threshold : 0.8  
Height Threshold [FU] : 5  
Area Threshold : 0.1  
Width Threshold [s] : 0.6  
Baseline Plateau [s] : 0.5

**Filter Settings**

Filter Width [s] : 0.5  
Polynomial Order : 4

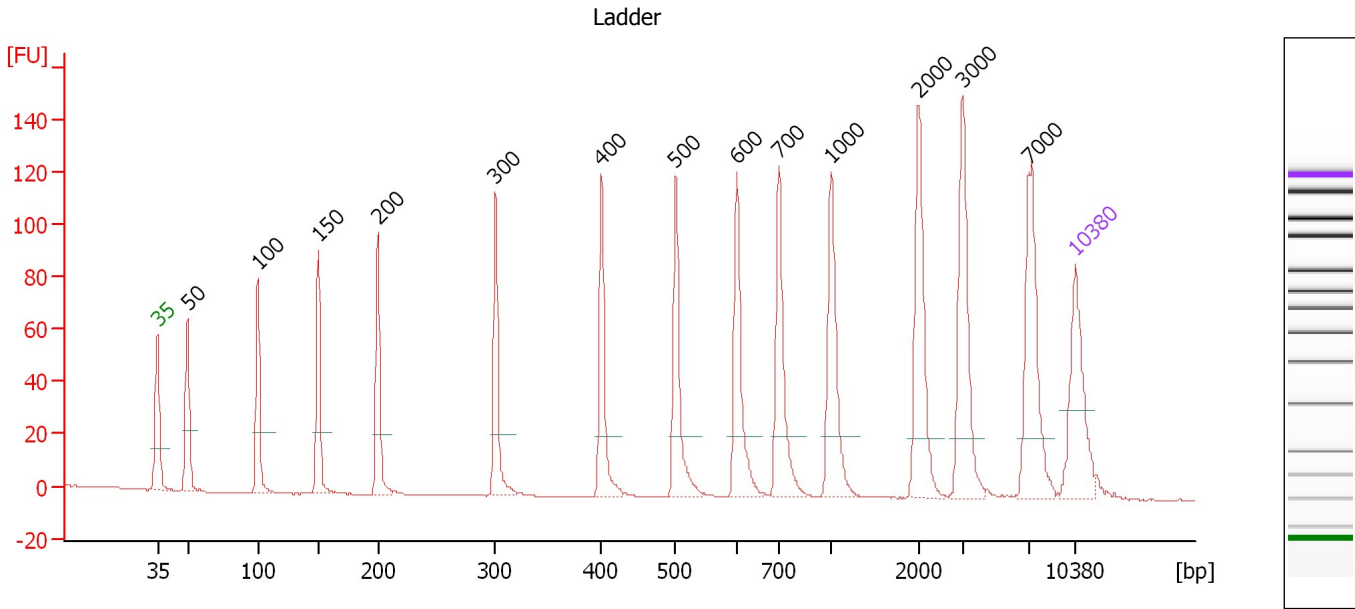
**Ladder**

Ladder Peak	Size	Area
1	35	160
2	50	210
3	100	208
4	150	221
5	200	242
6	300	270
7	400	305
8	500	306
9	600	336
10	700	321
11	1000	366
12	2000	413
13	3000	411
14	7000	400
15	10380	214

Assay Class: High Sensitivity DNA Assay  
 Data Path: C:\...ents and Settings\Bioanalyzer\2014-02-25\2014-02-25\_005.xad

Created: 2/25/2014 5:37:28 PM  
 Modified: 2/25/2014 6:16:42 PM

**Electropherogram Summary**



**Overall Results for Ladder**

Noise: 0.1

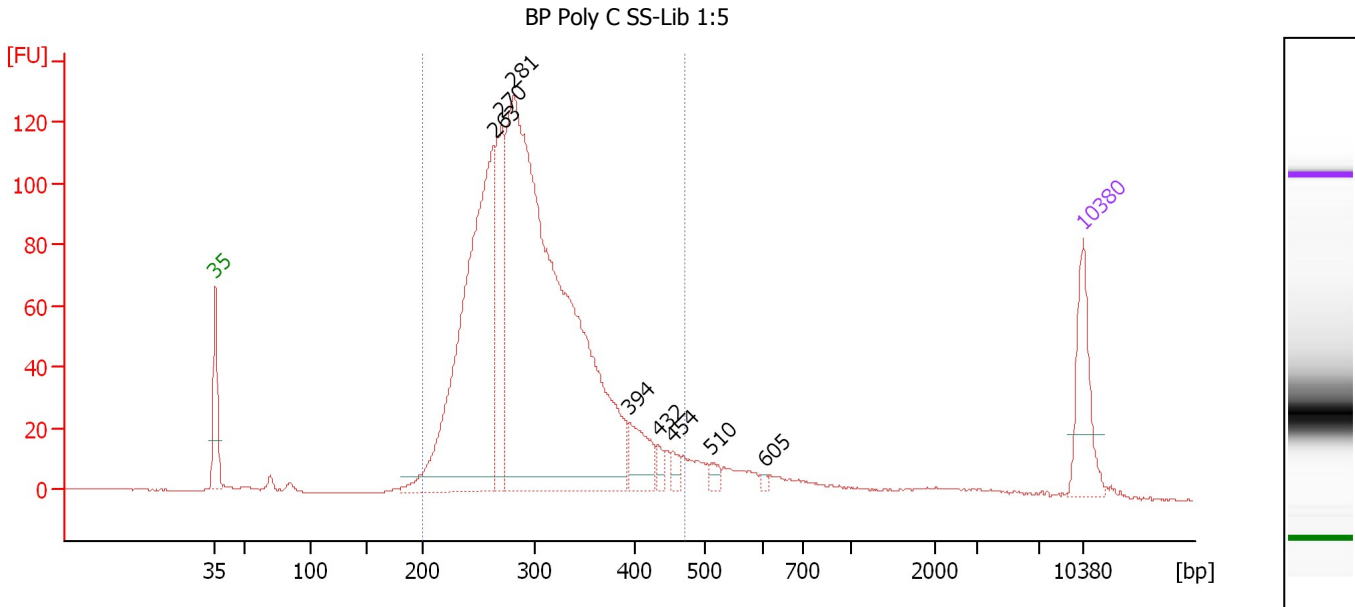
**Peak table for Ladder**

Peak	Aligned Migration Time [s]	Size [bp]	Conc. [pg/μl]	Molarity [pmol/l]	Observations
1	43.00	35	125.00	5,411.3	Lower Marker
2	45.28	50	150.00	4,545.5	Ladder Peak
3	50.66	100	150.00	2,272.7	Ladder Peak
4	55.27	150	150.00	1,515.2	Ladder Peak
5	59.79	200	150.00	1,136.4	Ladder Peak
6	68.79	300	150.00	757.6	Ladder Peak
7	76.88	400	150.00	568.2	Ladder Peak
8	82.52	500	150.00	454.5	Ladder Peak
9	87.21	600	150.00	378.8	Ladder Peak
10	90.40	700	150.00	324.7	Ladder Peak
11	94.36	1,000	150.00	227.3	Ladder Peak
12	101.03	2,000	150.00	113.6	Ladder Peak
13	104.43	3,000	150.00	75.8	Ladder Peak
14	109.47	7,000	150.00	32.5	Ladder Peak
15	113.00	10,380	75.00	10.9	Upper Marker

Assay Class: High Sensitivity DNA Assay  
 Data Path: C:\...ents and Settings\Bioanalyzer\2014-02-25\2014-02-25\_005.xad

Created: 2/25/2014 5:37:28 PM  
 Modified: 2/25/2014 6:16:42 PM

**Electropherogram Summary Continued ...**



**Overall Results for sample 1 : BP Poly C SS-Lib 1:5**

Number of peaks found: 8                      Corr. Area 1: 1,820.9  
 Noise: 0.2

**Peak table for sample 1 : BP Poly C SS-Lib 1:5**

Peak	Aligned Migration Time [s]	Size [bp]	Conc. [pg/μl]	Molarity [pmol/l]	Observations
1	43.00	35	125.00	5,411.3	Lower Marker
2	65.50	263	711.72	4,092.8	
3	66.10	270	203.67	1,142.2	
4	67.05	281	1,428.82	7,712.5	
5	76.39	394	67.16	258.3	
6	78.71	432	12.02	42.1	
7	79.91	454	13.30	44.4	
8	83.01	510	13.34	39.6	
9	87.36	605	4.00	10.0	
10	113.00	10,380	75.00	10.9	Upper Marker

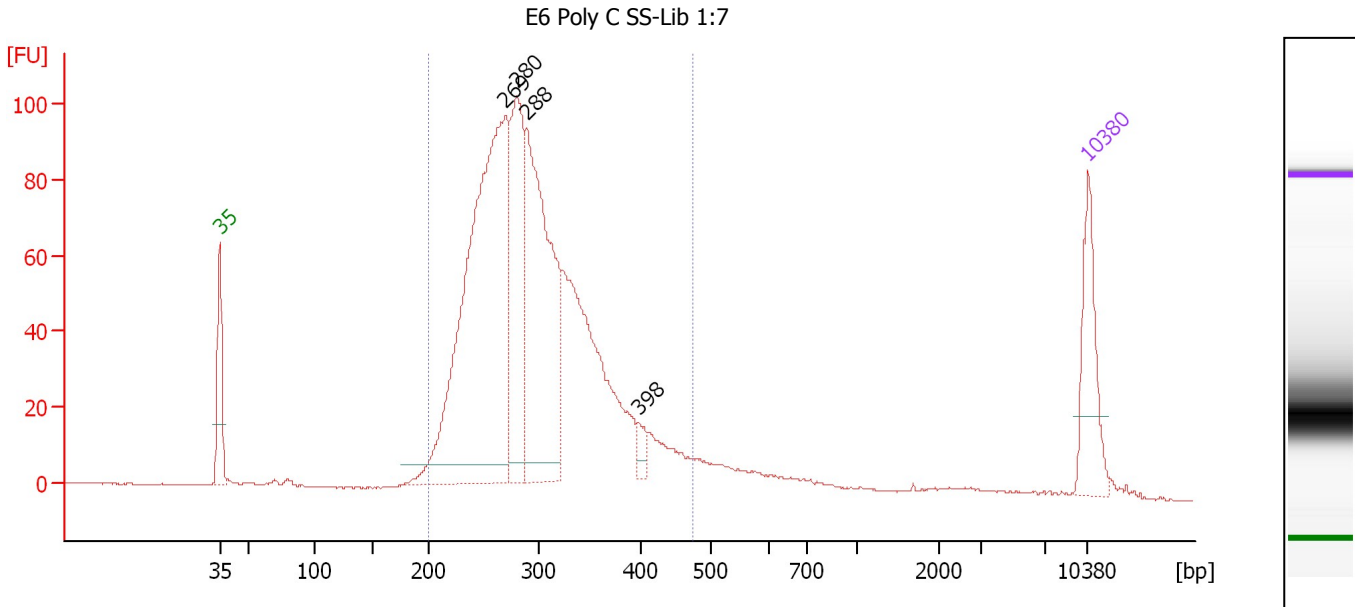
**Region table for sample 1 : BP Poly C SS-Lib 1:5**

From [bp]	To [bp]	Average Size [bp]	Molarity [pmol/l]	Conc. [pg/μl]	Co Corr. lor Area	% of Total	Size distribution in CV [%]
200	471	299	12,540.0	2,391.21	1,820.9	91	17.7

Assay Class: High Sensitivity DNA Assay  
 Data Path: C:\...ents and Settings\Bioanalyzer\2014-02-25\2014-02-25\_005.xad

Created: 2/25/2014 5:37:28 PM  
 Modified: 2/25/2014 6:16:42 PM

**Electropherogram Summary Continued ...**



**Overall Results for sample 2 : E6 Poly C SS-Lib 1:7**

Number of peaks found: 4                      Corr. Area 1: 1,539.3  
 Noise: 0.2

**Peak table for sample 2 : E6 Poly C SS-Lib 1:7**

Peak	Aligned Migration Time [s]	Size [bp]	Conc. [pg/μl]	Molarity [pmol/l]	Observations
1	43.00	35	125.00	5,411.3	Lower Marker
2	66.03	269	774.56	4,356.5	
3	66.98	280	256.81	1,390.2	
4	67.75	288	417.94	2,195.1	
5	76.73	398	19.14	72.8	
6	113.00	10,380	75.00	10.9	Upper Marker

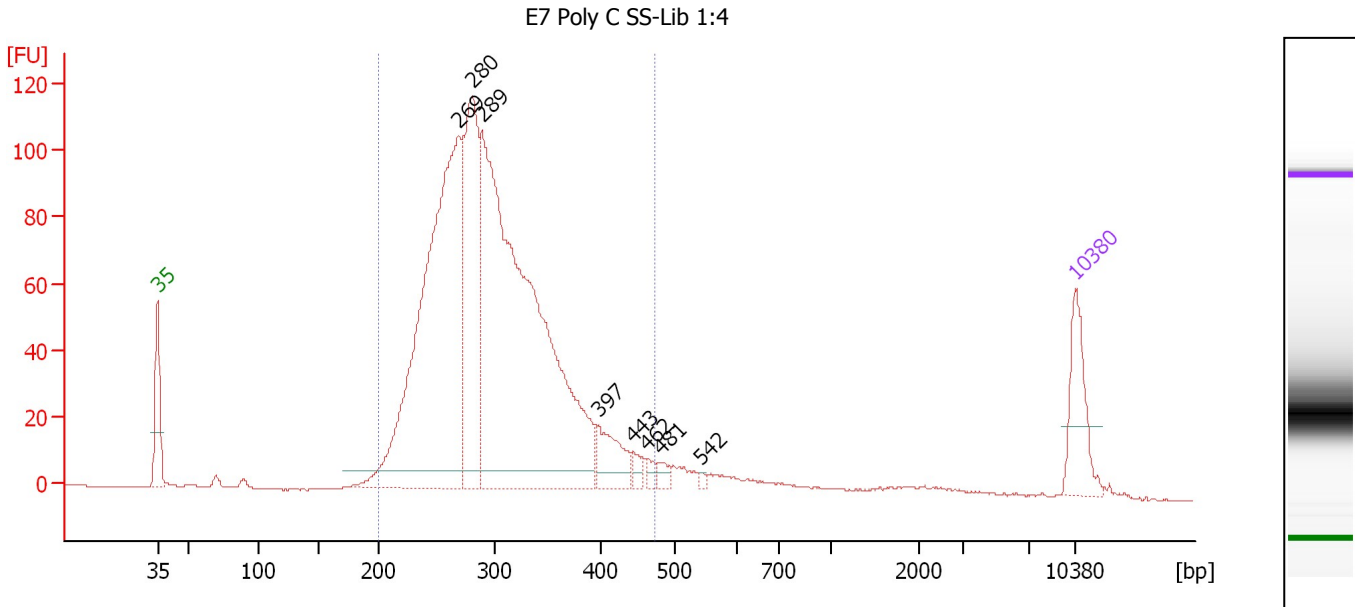
**Region table for sample 2 : E6 Poly C SS-Lib 1:7**

From [bp]	To [bp]	Average Size [bp]	Molarity [pmol/l]	Conc. [pg/μl]	Co Corr. lor Area	% of Total	Size distribution in CV [%]
200	477	297	10,458.9	1,978.57	1,539.3	92	18.1

Assay Class: High Sensitivity DNA Assay  
 Data Path: C:\...ents and Settings\Bioanalyzer\2014-02-25\2014-02-25\_005.xad

Created: 2/25/2014 5:37:28 PM  
 Modified: 2/25/2014 6:16:42 PM

**Electropherogram Summary Continued ...**



**Overall Results for sample 3 : E7 Poly C SS-Lib 1:4**

Number of peaks found: 8                      Corr. Area 1: 1,622.6  
 Noise: 0.2

**Peak table for sample 3 : E7 Poly C SS-Lib 1:4**

Peak	Aligned Migration Time [s]	Size [bp]	Conc. [pg/μl]	Molarity [pmol/l]	Observations
1	43.00	35	125.00	5,411.3	Lower Marker
2	65.96	269	915.34	5,164.2	
3	67.00	280	374.17	2,023.9	
4	67.78	289	1,201.30	6,303.0	
5	76.61	397	70.03	267.5	
6	79.30	443	14.42	49.3	
7	80.38	462	11.01	36.1	
8	81.42	481	13.29	41.9	
9	84.50	542	4.72	13.2	
10	113.00	10,380	75.00	10.9	Upper Marker

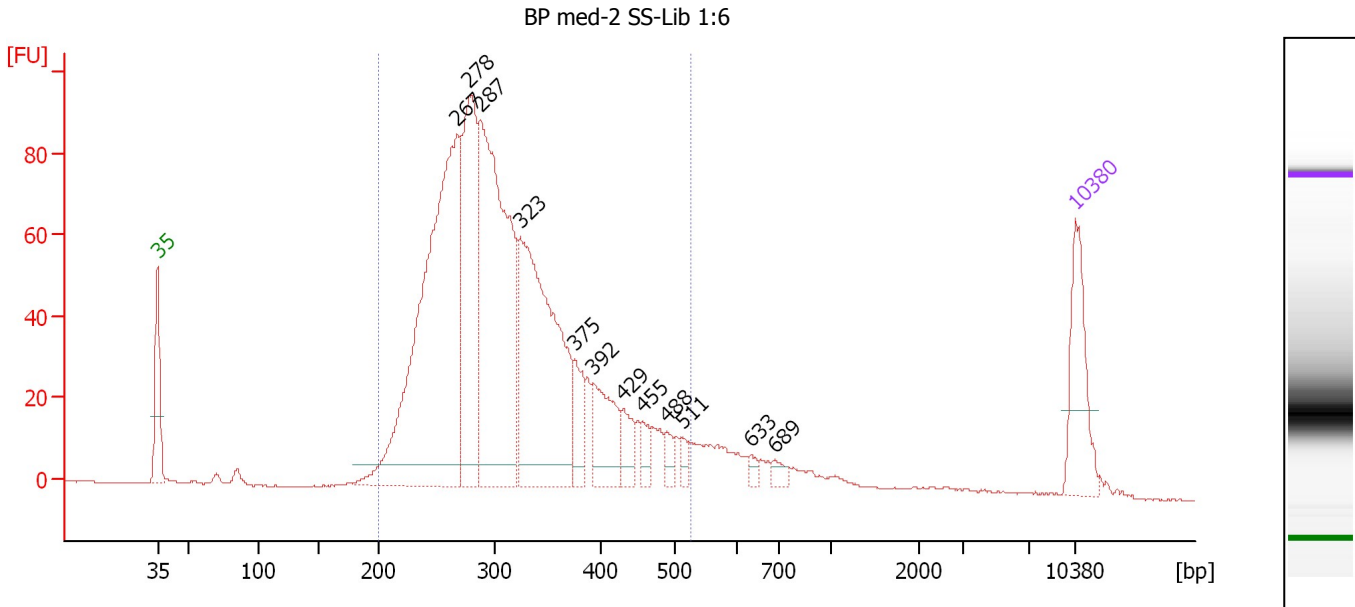
**Region table for sample 3 : E7 Poly C SS-Lib 1:4**

From [bp]	To [bp]	Average Size [bp]	Molarity [pmol/l]	Conc. [pg/μl]	Co Corr. lor Area	% of Total	Size distribution in CV [%]
200	472	299	13,536.6	2,584.33	1,622.6	92	17.4

Assay Class: High Sensitivity DNA Assay  
 Data Path: C:\...ents and Settings\Bioanalyzer\2014-02-25\2014-02-25\_005.xad

Created: 2/25/2014 5:37:28 PM  
 Modified: 2/25/2014 6:16:42 PM

**Electropherogram Summary Continued ...**



**Overall Results for sample 4 : BP med-2 SS-Lib 1:6**

Number of peaks found: 12      Corr. Area 1: 1,498.6  
 Noise: 0.1

**Peak table for sample 4 : BP med-2 SS-Lib 1:6**

Peak	Aligned Migration Time [s]	Size [bp]	Conc. [pg/μl]	Molarity [pmol/l]	Observations
1	43.00	35	125.00	5,411.3	Lower Marker
2	65.82	267	694.91	3,942.7	
3	66.79	278	279.75	1,526.0	
4	67.57	287	532.10	2,813.8	
5	70.68	323	416.70	1,952.0	
6	74.85	375	52.96	214.1	
7	76.20	392	88.11	340.9	
8	78.53	429	33.58	118.5	
9	79.97	455	19.36	64.5	
10	81.85	488	15.04	46.7	
11	83.04	511	10.85	32.2	
12	88.25	633	8.57	20.5	
13	90.05	689	11.76	25.9	
14	113.00	10,380	75.00	10.9	Upper Marker

**Region table for sample 4 : BP med-2 SS-Lib 1:6**

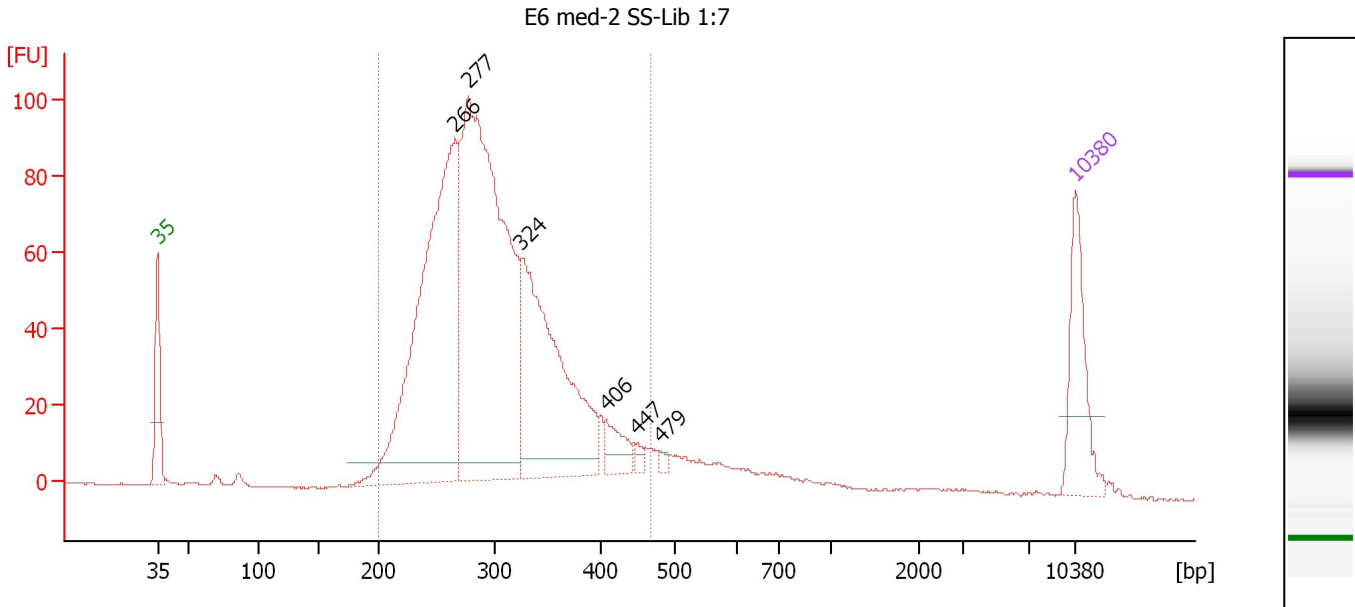
From [bp]	To [bp]	Average Size [bp]	Molarity [pmol/l]	Conc. [pg/μl]	Co Corr. lor Area	% of Total	Size distribution in CV [%]
200	524	314	11,454.6	2,253.13	1,498.6	91	21.1



Assay Class: High Sensitivity DNA Assay  
 Data Path: C:\...ents and Settings\Bioanalyzer\2014-02-25\2014-02-25\_005.xad

Created: 2/25/2014 5:37:28 PM  
 Modified: 2/25/2014 6:16:42 PM

**Electropherogram Summary Continued ...**



**Overall Results for sample 5 : E6 med-2 SS-Lib 1:7**

Number of peaks found: 6                      Corr. Area 1: 1,447.9  
 Noise: 0.1

**Peak table for sample 5 : E6 med-2 SS-Lib 1:7**

Peak	Aligned Migration Time [s]	Size [bp]	Conc. [pg/μl]	Molarity [pmol/l]	Observations
1	43.00	35	125.00	5,411.3	Lower Marker
2	65.69	266	603.12	3,441.4	
3	66.70	277	749.38	4,101.8	
4	70.76	324	354.02	1,653.5	
5	77.21	406	35.11	131.1	
6	79.54	447	6.95	23.5	
7	81.31	479	4.71	14.9	
8	113.00	10,380	75.00	10.9	Upper Marker

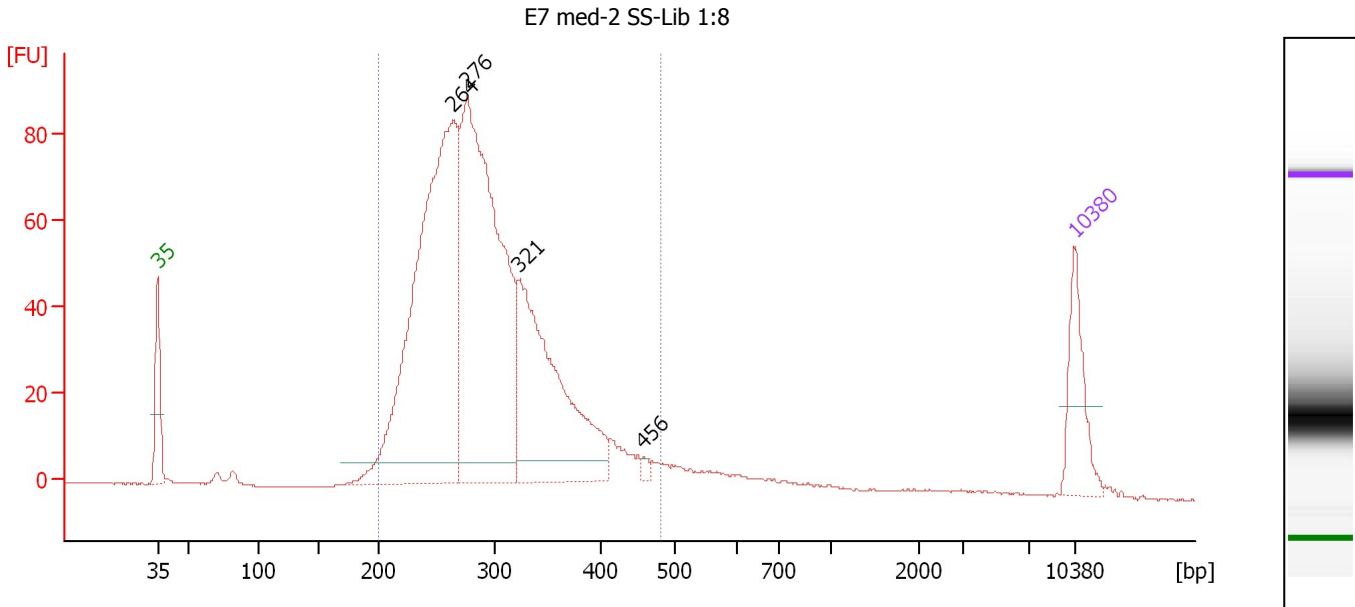
**Region table for sample 5 : E6 med-2 SS-Lib 1:7**

From [bp]	To [bp]	Average Size [bp]	Molarity [pmol/l]	Conc. [pg/μl]	Co Corr. lor Area	% of Total	Size distribution in CV [%]
200	466	300	9,626.0	1,839.67	1,447.9	91	17.7

Assay Class: High Sensitivity DNA Assay  
 Data Path: C:\...ents and Settings\Bioanalyzer\2014-02-25\2014-02-25\_005.xad

Created: 2/25/2014 5:37:28 PM  
 Modified: 2/25/2014 6:16:42 PM

**Electropherogram Summary Continued ...**



**Overall Results for sample 6 : E7 med-2 SS-Lib 1:8**

Number of peaks found: 4                      Corr. Area 1: 1,262.4  
 Noise: 0.1

**Peak table for sample 6 : E7 med-2 SS-Lib 1:8**

Peak	Aligned Migration Time [s]	Size [bp]	Conc. [pg/μl]	Molarity [pmol/l]	Observations
1	43.00	35	125.00	5,411.3	Lower Marker
2	65.58	264	905.85	5,192.1	
3	66.60	276	844.67	4,642.3	
4	70.50	321	440.91	2,079.8	
5	80.04	456	7.59	25.2	
6	113.00	10,380	75.00	10.9	Upper Marker

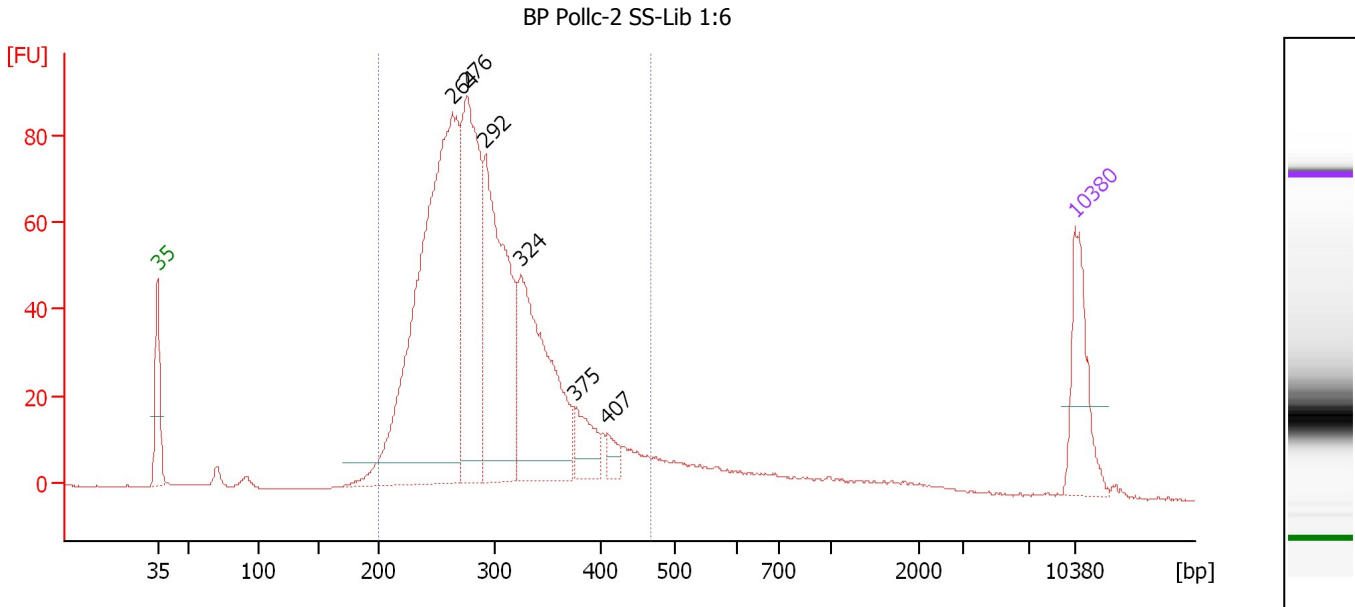
**Region table for sample 6 : E7 med-2 SS-Lib 1:8**

From [bp]	To [bp]	Average Size [bp]	Molarity [pmol/l]	Conc. [pg/μl]	Co Corr. lor Area	% of Total	Size distribution in CV [%]
200	480	294	12,263.9	2,292.69	1,262.4	93	18.1

Assay Class: High Sensitivity DNA Assay  
 Data Path: C:\...ents and Settings\Bioanalyzer\2014-02-25\2014-02-25\_005.xad

Created: 2/25/2014 5:37:28 PM  
 Modified: 2/25/2014 6:16:42 PM

**Electropherogram Summary Continued ...**



**Overall Results for sample 7 : BP Pollc-2 SS-Lib 1:6**

Number of peaks found: 6                      Corr. Area 1: 1,234.5  
 Noise: 0.2

**Peak table for sample 7 : BP Pollc-2 SS-Lib 1:6**

Peak	Aligned Migration Time [s]	Size [bp]	Conc. [pg/μl]	Molarity [pmol/l]	Observations
1	43.00	35	125.00	5,411.3	Lower Marker
2	65.51	264	763.18	4,387.2	
3	66.63	276	340.64	1,869.6	
4	68.03	292	345.46	1,795.4	
5	70.72	324	286.70	1,341.2	
6	74.85	375	49.60	200.4	
7	77.28	407	18.38	68.4	
8	113.00	10,380	75.00	10.9	Upper Marker

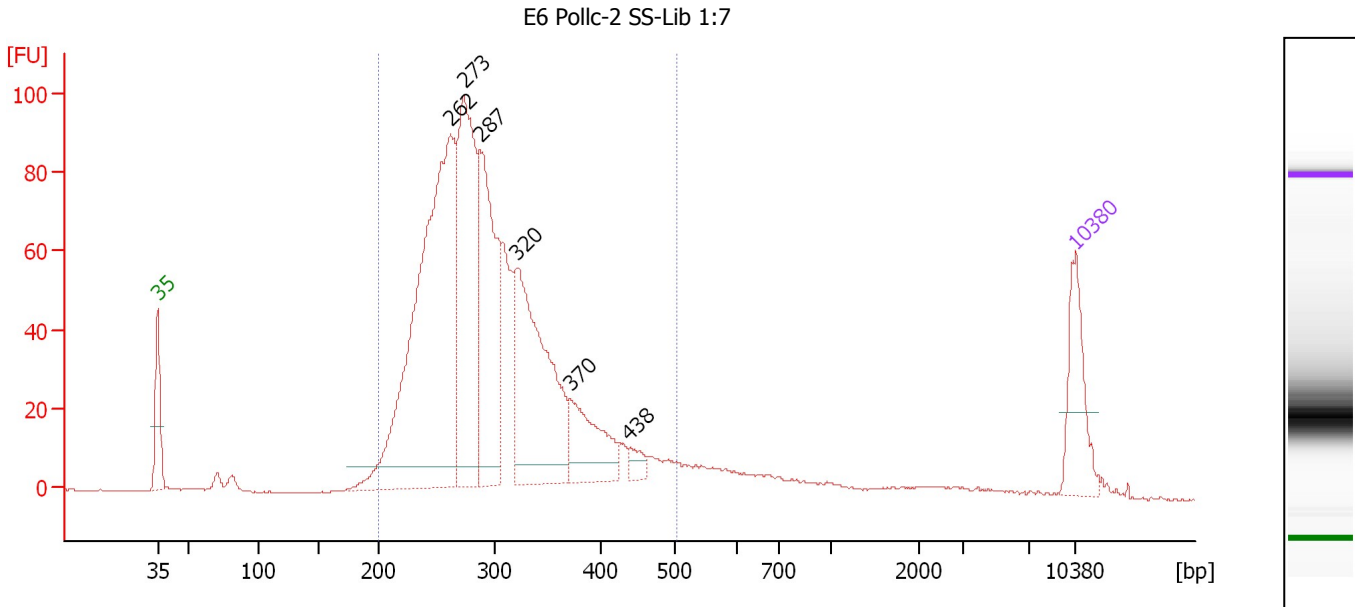
**Region table for sample 7 : BP Pollc-2 SS-Lib 1:6**

From [bp]	To [bp]	Average Size [bp]	Molarity [pmol/l]	Conc. [pg/μl]	Co Corr. lor Area	% of Total	Size distribution in CV [%]
200	467	294	10,316.2	1,935.26	1,234.5	89	17.8

Assay Class: High Sensitivity DNA Assay  
 Data Path: C:\...ents and Settings\Bioanalyzer\2014-02-25\2014-02-25\_005.xad

Created: 2/25/2014 5:37:28 PM  
 Modified: 2/25/2014 6:16:42 PM

**Electropherogram Summary Continued ...**



**Overall Results for sample 8 : E6 Pollc-2 SS-Lib 1:7**

Number of peaks found: 6                      Corr. Area 1: 1,370.0  
 Noise: 0.2

**Peak table for sample 8 : E6 Pollc-2 SS-Lib 1:7**

Peak	Aligned Migration Time [s]	Size [bp]	Conc. [pg/μl]	Molarity [pmol/l]	Observations
1	43.00	35	125.00	5,411.3	Lower Marker
2	65.38	262	782.99	4,526.4	
3	66.36	273	387.40	2,149.6	
4	67.57	287	295.23	1,561.2	
5	70.44	320	352.84	1,668.2	
6	74.48	370	110.09	450.4	
7	79.01	438	18.14	62.8	
8	113.00	10,380	75.00	10.9	Upper Marker

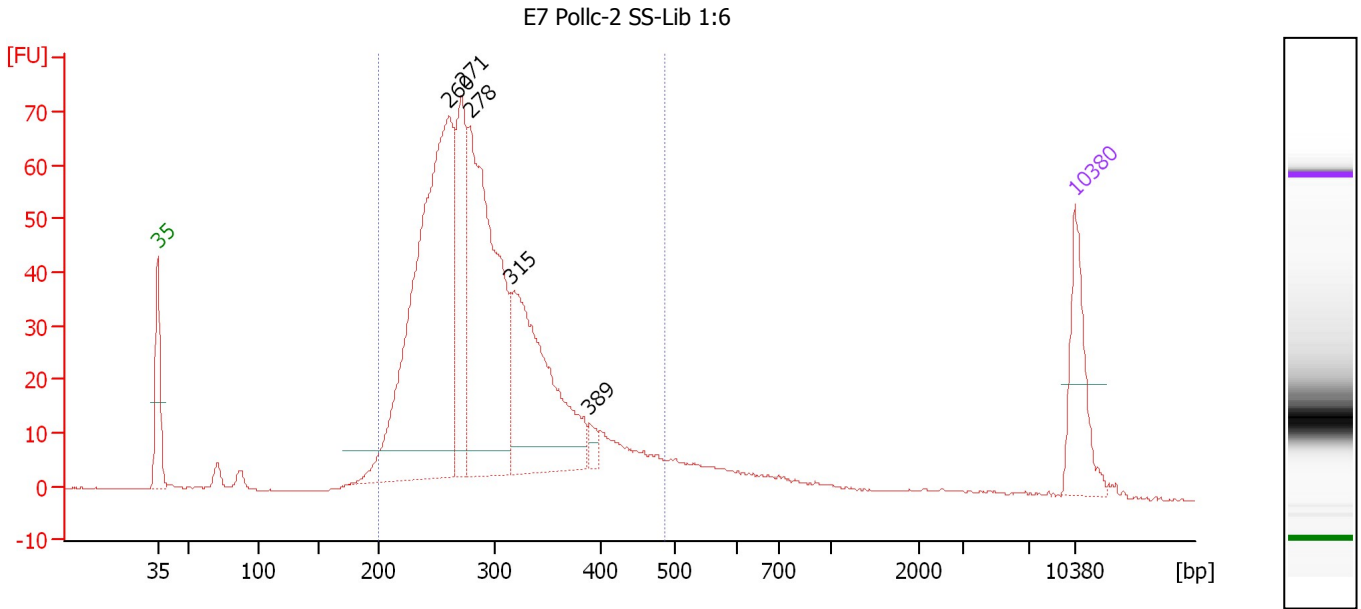
**Region table for sample 8 : E6 Pollc-2 SS-Lib 1:7**

From [bp]	To [bp]	Average Size [bp]	Molarity [pmol/l]	Conc. [pg/μl]	Co Corr. lor Area	% of Total	Size distribution in CV [%]
200	501	299	11,845.2	2,242.32	1,370.0	90	19.5

Assay Class: High Sensitivity DNA Assay  
 Data Path: C:\...ents and Settings\Bioanalyzer\2014-02-25\2014-02-25\_005.xad

Created: 2/25/2014 5:37:28 PM  
 Modified: 2/25/2014 6:16:42 PM

**Electropherogram Summary Continued ...**



**Overall Results for sample 9 : E7 Pollc-2 SS-Lib 1:6**

Number of peaks found: 5                      Corr. Area 1: 999.0  
 Noise: 0.1

**Peak table for sample 9 : E7 Pollc-2 SS-Lib 1:6**

Peak	Aligned Migration Time [s]	Size [bp]	Conc. [pg/μl]	Molarity [pmol/l]	Observations
1	43.00	35	125.00	5,411.3	Lower Marker
2	65.21	260	725.81	4,225.0	
3	66.20	271	193.45	1,080.6	
4	66.83	278	469.83	2,558.8	
5	69.96	315	324.87	1,565.1	
6	75.96	389	15.09	58.8	
7	113.00	10,380	75.00	10.9	Upper Marker

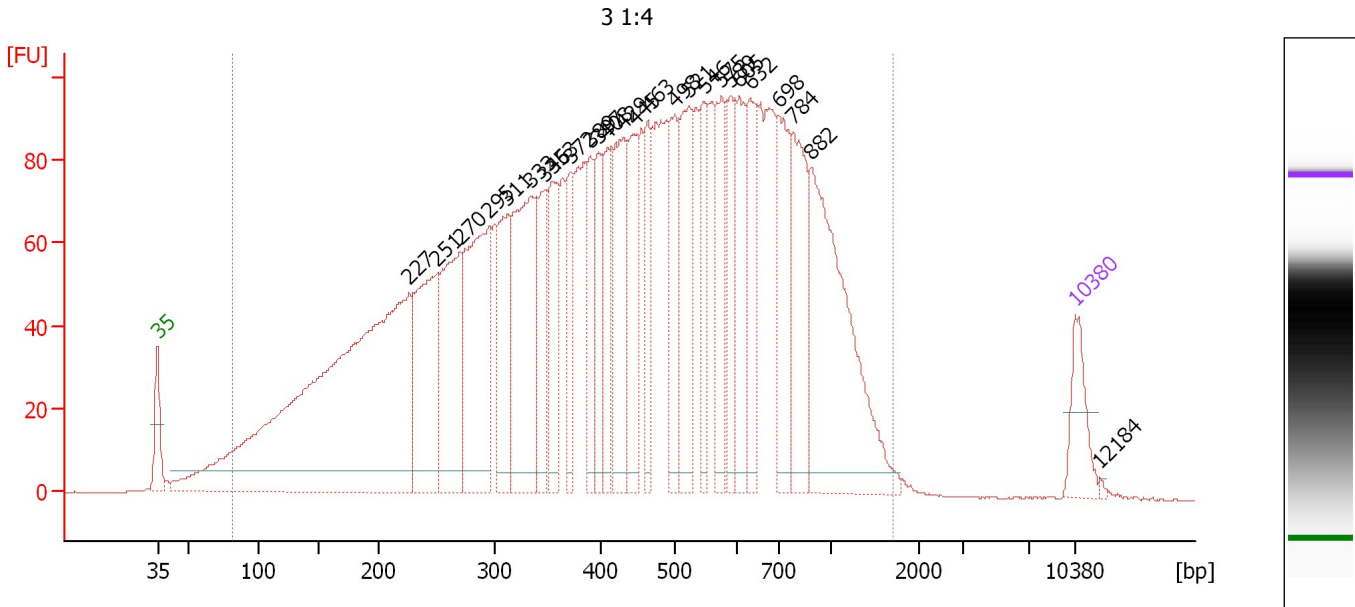
**Region table for sample 9 : E7 Pollc-2 SS-Lib 1:6**

From [bp]	To [bp]	Average Size [bp]	Molarity [pmol/l]	Conc. [pg/μl]	Co Corr. lor Area	% of Total	Size distribution in CV [%]
200	484	294	10,521.4	1,960.46	999.0	90	19.2

Assay Class: High Sensitivity DNA Assay  
 Data Path: C:\...ents and Settings\Bioanalyzer\2014-02-25\2014-02-25\_005.xad

Created: 2/25/2014 5:37:28 PM  
 Modified: 2/25/2014 6:16:42 PM

**Electropherogram Summary Continued ...**



**Overall Results for sample 10 : 3 1:4**

Number of peaks found: 26                      Corr. Area 1: 4,046.8  
 Noise: 0.2

**Peak table for sample 10 : 3 1:4**

Peak	Aligned Migration Time [s]	Size [bp]	Conc. [pg/μl]	Molarity [pmol/l]	Observations
1	43.00	35	125.00	5,411.3	Lower Marker
2	62.21	227	1,685.39	11,257.0	
3	64.36	251	380.40	2,298.2	
4	66.06	270	354.39	1,990.7	
5	68.31	295	459.86	2,364.5	
6	69.70	311	215.54	1,049.2	
7	71.45	333	428.56	1,950.6	
8	72.53	346	167.95	735.1	
9	73.11	353	189.90	814.2	
10	74.59	372	128.36	523.2	
11	76.03	389	129.34	503.2	
12	76.65	397	138.54	528.5	
13	77.33	408	148.83	552.8	
14	78.54	429	249.31	879.7	
15	79.39	445	190.85	650.5	
16	80.42	463	132.44	433.6	
17	82.40	498	162.41	494.3	
18	83.52	521	229.42	666.8	
19	84.69	546	127.28	353.1	
20	86.03	575	160.93	424.2	
21	86.71	589	139.91	359.8	
22	87.38	605	164.16	411.0	
23	88.23	632	164.57	394.6	
24	90.34	698	217.32	471.6	
25	91.51	784	239.37	462.6	

Assay Class: High Sensitivity DNA Assay  
 Data Path: C:\...ents and Settings\Bioanalyzer\2014-02-25\2014-02-25\_005.xad

Created: 2/25/2014 5:37:28 PM  
 Modified: 2/25/2014 6:16:42 PM

### Electropherogram Summary Continued ...

#### ... Peak table for sample 10 : 3 1:4

Peak	Aligned Migration Time [s]	Size [bp]	Conc. [pg/ $\mu$ l]	Molarity [pmol/l]	Observations
26	92.81	882	522.56	897.2	
27	113.00	10,380	75.00	10.9	Upper Marker
28	114.88	12,184	0.00	0.0	

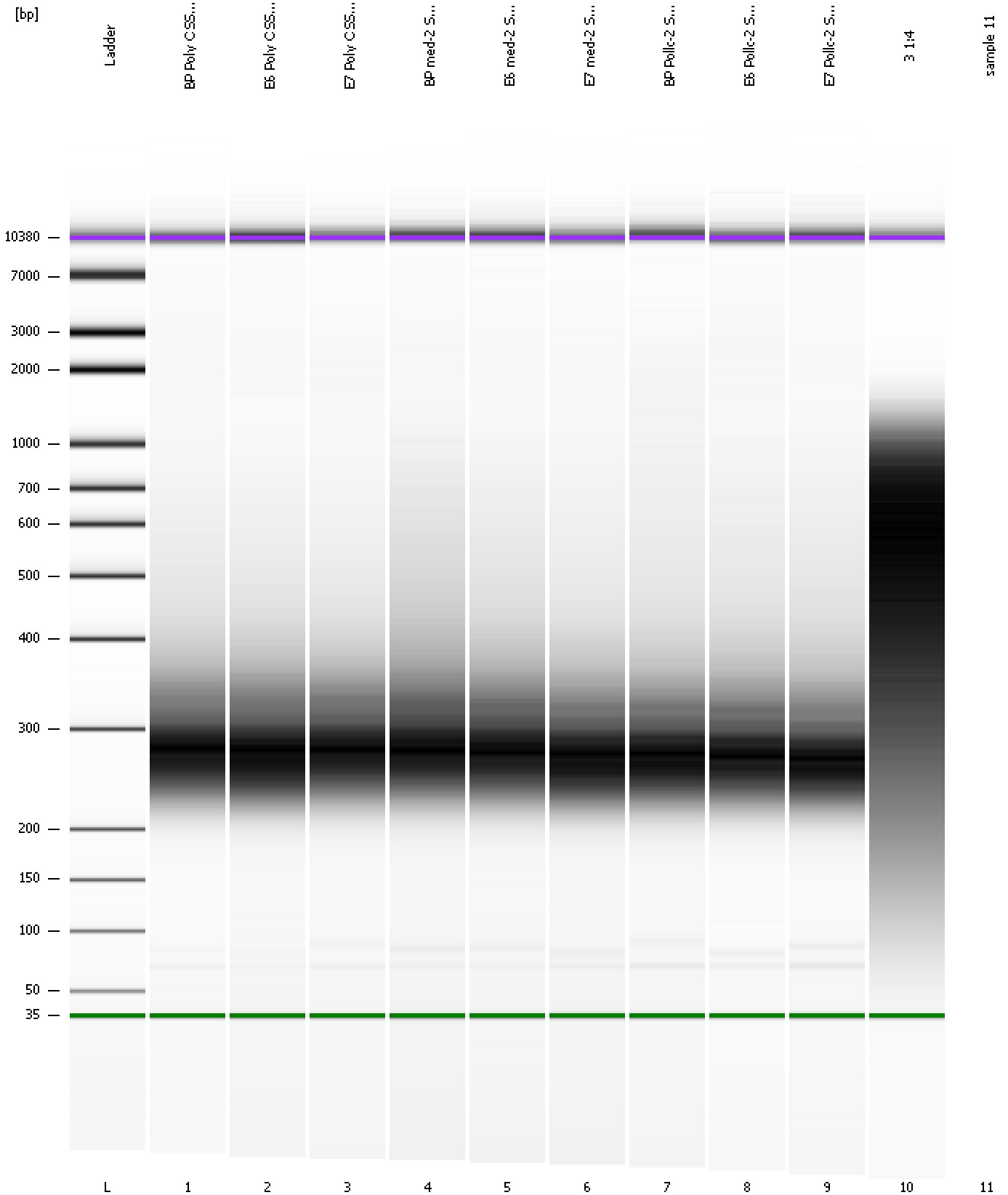
#### Region table for sample 10 : 3 1:4

From [bp]	To [bp]	Average Size [bp]	Molarity [pmol/l]	Conc. [pg/ $\mu$ l]	Co Corr. lor Area	% of Total	Size distribution in CV [%]
82	1,703	487	43,932.2	8,896.42	4,046.8	98	54.3

Assay Class: High Sensitivity DNA Assay  
Data Path: C:\...ents and Settings\Bioanalyzer\2014-02-25\2014-02-25\_005.xad

Created: 2/25/2014 5:37:28 PM  
Modified: 2/25/2014 6:16:42 PM

**Gel Image**





Assay Class: High Sensitivity DNA Assay  
Data Path: C:\...ents and Settings\Bioanalyzer\2014-02-25\2014-02-25\_005.xad

Created: 2/25/2014 5:37:28 PM  
Modified: 2/25/2014 6:16:42 PM

**Invalid Samples**

Sample 11 has not been run, no results available.