

Assay Class: High Sensitivity DNA Assay
Data Path: C:\...ents and Settings\Bioanalyzer\2014-02-26\2014-02-26_001.xad

Created: 2/26/2014 10:12:23 AM
Modified: 2/26/2014 10:54:04 AM

Electrophoresis File Run Summary

Instrument Information:

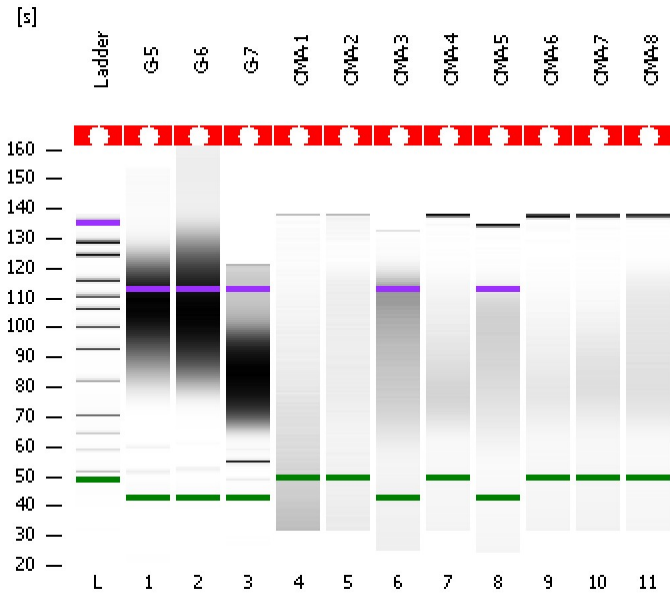
Instrument Name: DE13701086 Firmware: C.01.069
Serial#: DE13701086 Type: G2938B

Assay Information:

Assay Origin Path: C:\Program Files\Agilent\2100 bioanalyzer\2100 expert\assays\dsDNA\High Sensitivity DNA.xsy
Assay Class: High Sensitivity DNA Assay
Version: 1.03
Assay Comments: Copyright © 2003-2010 Agilent Technologies

Chip Information:

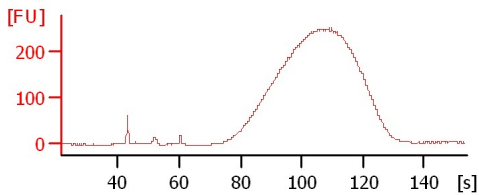
Chip Lot #:
Reagent Kit Lot #:
Chip Comments:



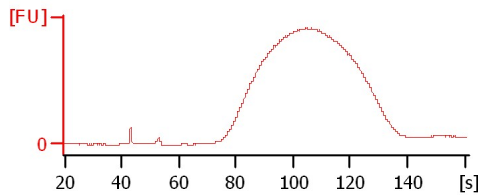
G-5

G-6

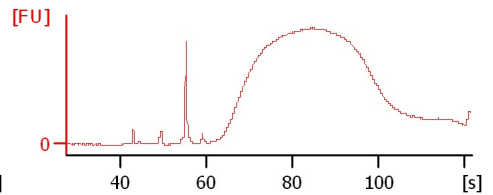
G-7



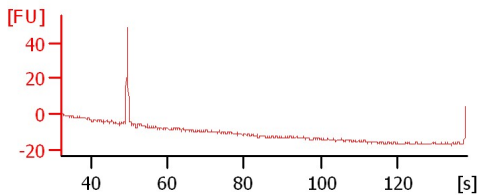
OMA-1



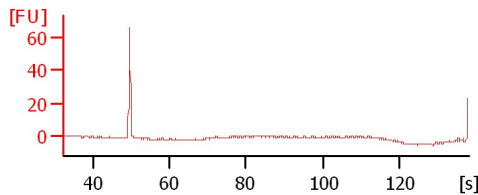
OMA-2



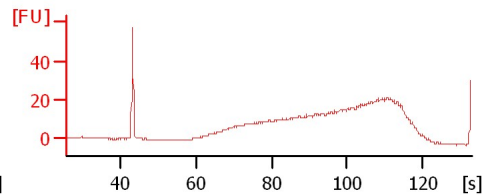
OMA-3



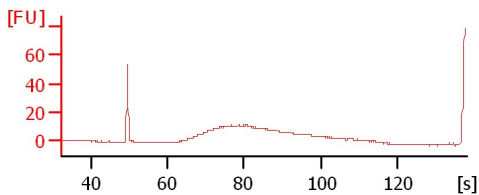
OMA-4



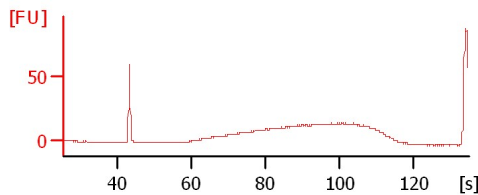
OMA-5



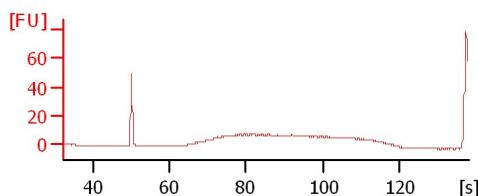
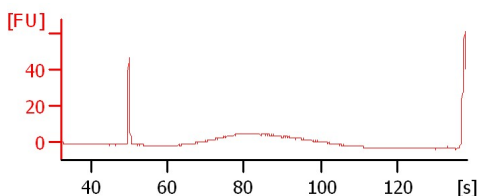
OMA-6



OMA-7



OMA-8



Assay Class: High Sensitivity DNA Assay
Data Path: C:\...ents and Settings\Bioanalyzer\2014-02-26\2014-02-26_001.xad

Created: 2/26/2014 10:12:23 AM
Modified: 2/26/2014 10:54:04 AM

Electrophoresis File Run Summary (Chip Summary)

Sample Name	Sample Comment	Rest. Digest	Status	Observation	Result Label	Result Color
G-5		<input type="checkbox"/>	✓			
G-6		<input type="checkbox"/>	✓			
G-7		<input type="checkbox"/>	✓			
OMA-1		<input type="checkbox"/>	✓			
OMA-2		<input type="checkbox"/>	✓			
OMA-3		<input type="checkbox"/>	✓			
OMA-4		<input type="checkbox"/>	✓			
OMA-5		<input type="checkbox"/>	✓			
OMA-6		<input type="checkbox"/>	✓			
OMA-7		<input type="checkbox"/>	✓			
OMA-8		<input type="checkbox"/>	✓			
Ladder		<input type="checkbox"/>	✓			

Chip Lot #

Reagent Kit Lot #

Chip Comments :

Assay Class: High Sensitivity DNA Assay
Data Path: C:\...ents and Settings\Bioanalyzer\2014-02-26\2014-02-26_001.xad

Created: 2/26/2014 10:12:23 AM
Modified: 2/26/2014 10:54:04 AM

Electrophoresis Assay Details

General Analysis Settings

Number of Available Sample and Ladder Wells (Max.) : 12
Minimum Visible Range [s] : 32
Maximum Visible Range [s] : 138
Start Analysis Time Range [s] : 33
End Analysis Time Range [s] : 137.5
Ladder Concentration [pg/μl] : 1950
Uses Standard Area for Ladder Fragments
Lower Marker Concentration [pg/μl] : 125
Upper Marker Concentration [pg/μl] : 75
Used Upper Marker for Quantitation
Standard Curve Fit is Point to Point
Show Data Aligned to Lower and Upper Marker

Integrator Settings

Integration Start Time [s] : 33.05
Integration End Time [s] : 137
Slope Threshold : 0.8
Height Threshold [FU] : 5
Area Threshold : 0.1
Width Threshold [s] : 0.6
Baseline Plateau [s] : 0.5

Filter Settings

Filter Width [s] : 0.5
Polynomial Order : 4

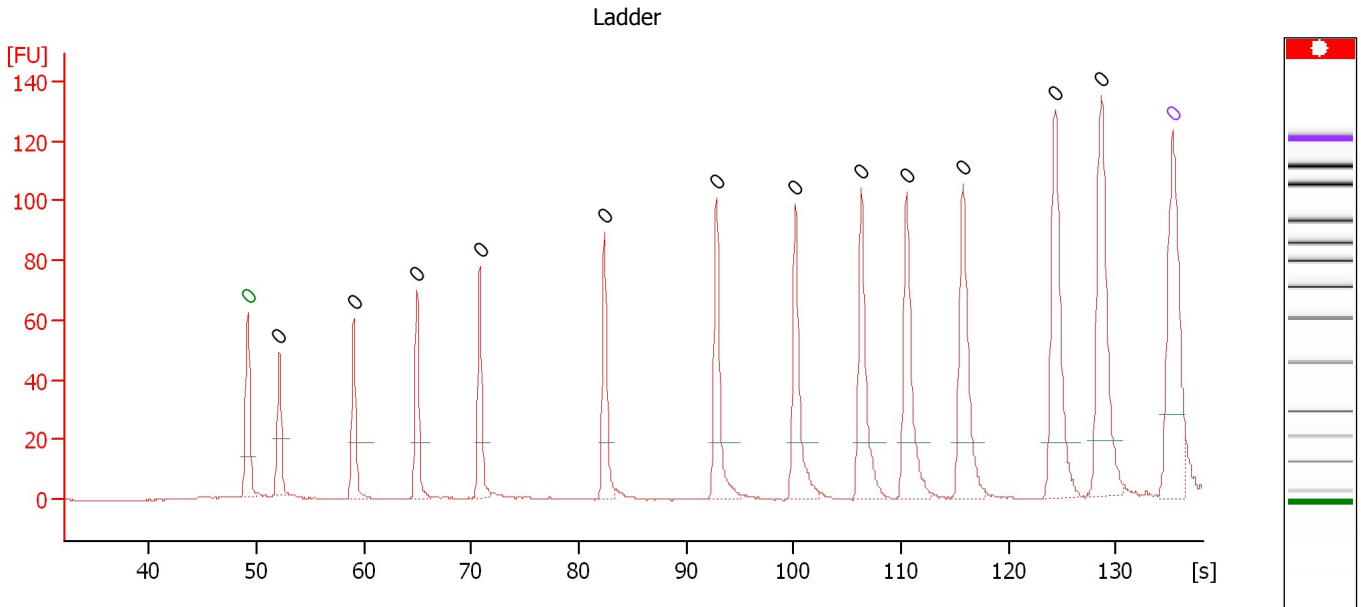
Ladder

Ladder Peak	Size	Area
1	35	160
2	50	210
3	100	208
4	150	221
5	200	242
6	300	270
7	400	305
8	500	306
9	600	336
10	700	321
11	1000	366
12	2000	413
13	3000	411
14	7000	400
15	10380	214

Assay Class: High Sensitivity DNA Assay
 Data Path: C:\...ents and Settings\Bioanalyzer\2014-02-26\2014-02-26_001.xad

Created: 2/26/2014 10:12:23 AM
 Modified: 2/26/2014 10:54:04 AM

Electropherogram Summary



Overall Results for Ladder

Noise: 0.2

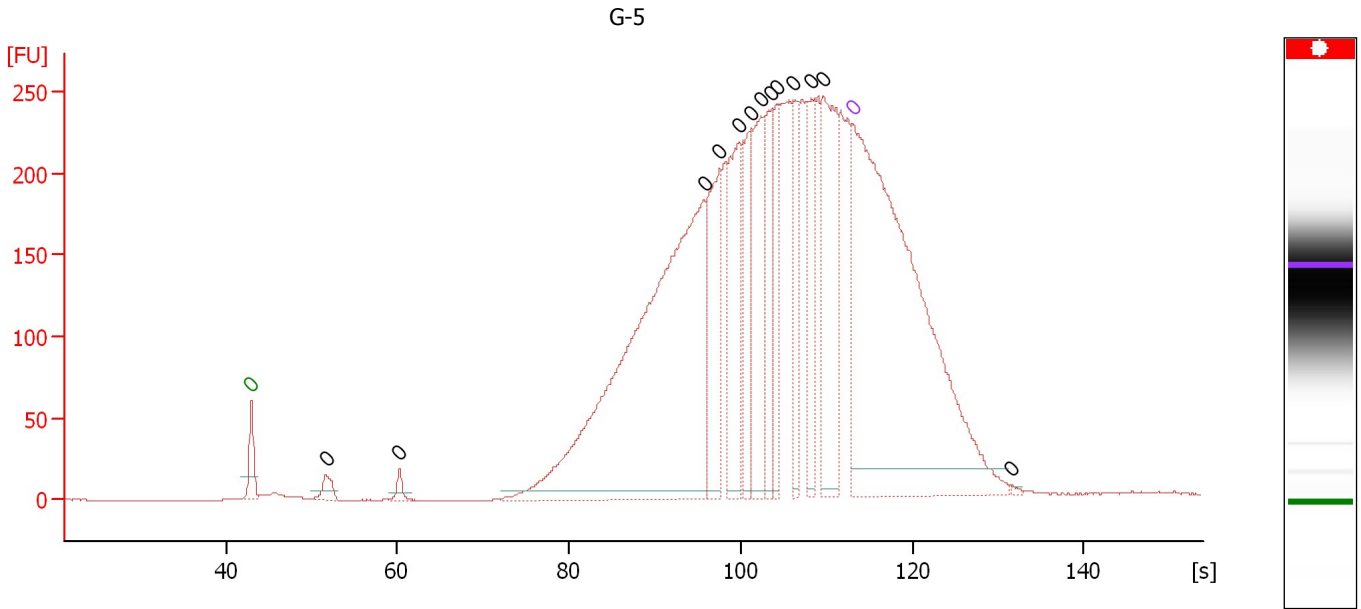
Peak table for Ladder

Peak	Aligned Migration Time [s]	Size [bp]	Conc. [pg/μl]	Molarity [pmol/l]	Observations
1	49.15	0	0.00	0.0	Lower Marker
2	52.10	0	0.00	0.0	Ladder Peak
3	59.05	0	0.00	0.0	Ladder Peak
4	64.95	0	0.00	0.0	Ladder Peak
5	70.80	0	0.00	0.0	Ladder Peak
6	82.40	0	0.00	0.0	Ladder Peak
7	92.80	0	0.00	0.0	Ladder Peak
8	100.15	0	0.00	0.0	Ladder Peak
9	106.30	0	0.00	0.0	Ladder Peak
10	110.55	0	0.00	0.0	Ladder Peak
11	115.75	0	0.00	0.0	Ladder Peak
12	124.35	0	0.00	0.0	Ladder Peak
13	128.65	0	0.00	0.0	Ladder Peak
14	135.30	0	0.00	0.0	Upper Marker

Assay Class: High Sensitivity DNA Assay
 Data Path: C:\...ents and Settings\Bioanalyzer\2014-02-26\2014-02-26_001.xad

Created: 2/26/2014 10:12:23 AM
 Modified: 2/26/2014 10:54:04 AM

Electropherogram Summary Continued ...



Overall Results for sample 1 : G-5

Number of peaks found: 13 Noise: 0.2

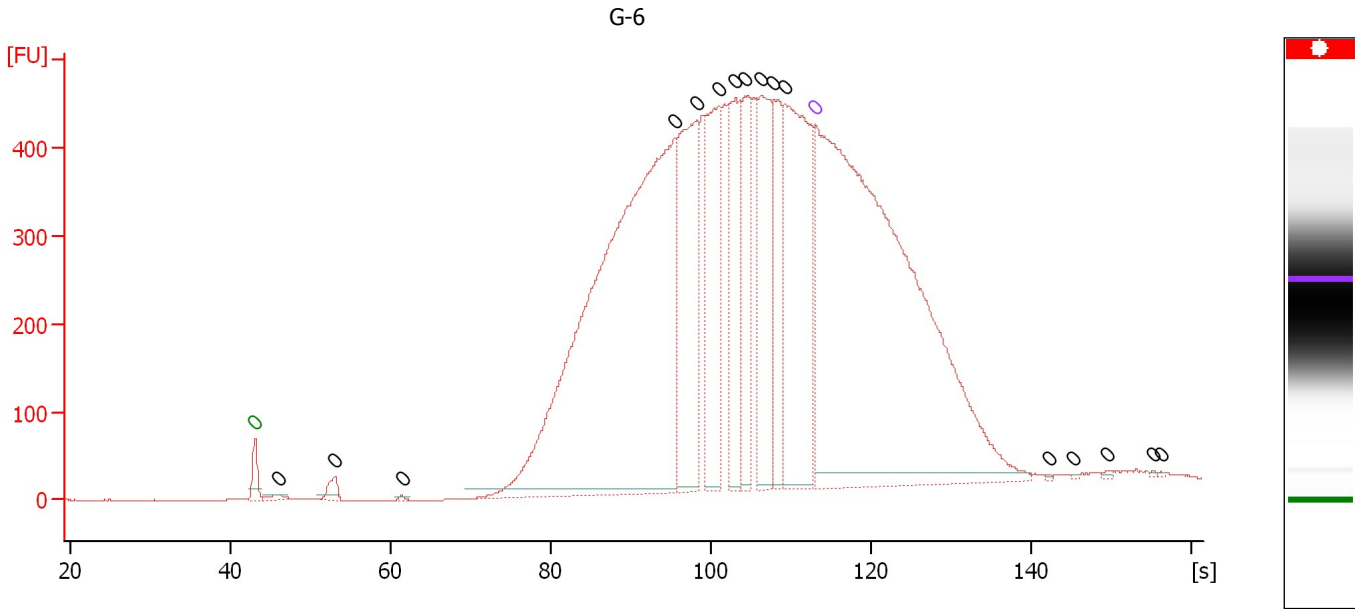
Peak table for sample 1 : G-5

Peak	Aligned Migration Time [s]	Size [bp]	Conc. [pg/μl]	Molarity [pmol/l]	Observations
1	43.00	0	0.00	0.0	Lower Marker
2	51.70	0	0.00	0.0	
3	60.27	0	0.00	0.0	
4	95.73	0	0.00	0.0	
5	97.55	0	0.00	0.0	
6	99.86	0	0.00	0.0	
7	101.18	0	0.00	0.0	
8	102.37	0	0.00	0.0	
9	103.55	0	0.00	0.0	
10	104.18	0	0.00	0.0	
11	106.12	0	0.00	0.0	
12	108.18	0	0.00	0.0	
13	109.62	0	0.00	0.0	
14	113.00	0	0.00	0.0	Upper Marker
15	131.52	0	0.00	0.0	

Assay Class: High Sensitivity DNA Assay
 Data Path: C:\...ents and Settings\Bioanalyzer\2014-02-26\2014-02-26_001.xad

Created: 2/26/2014 10:12:23 AM
 Modified: 2/26/2014 10:54:04 AM

Electropherogram Summary Continued ...



Overall Results for sample 2 : G-6

Number of peaks found: 16 Noise: 0.3

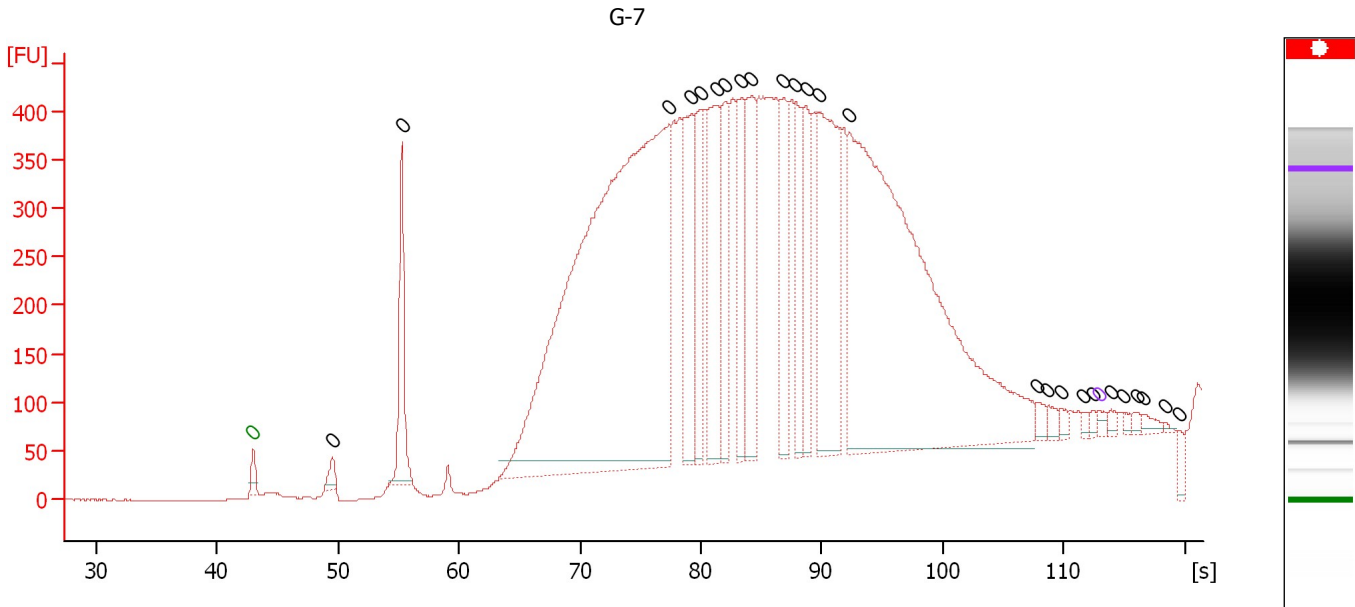
Peak table for sample 2 : G-6

Peak	Aligned Migration Time [s]	Size [bp]	Conc. [pg/μl]	Molarity [pmol/l]	Observations
1	43.00	0	0.00	0.0	Lower Marker
2	45.89	0	0.00	0.0	
3	53.00	0	0.00	0.0	
4	61.32	0	0.00	0.0	
5	95.35	0	0.00	0.0	
6	98.23	0	0.00	0.0	
7	100.92	0	0.00	0.0	
8	103.07	0	0.00	0.0	
9	104.34	0	0.00	0.0	
10	106.29	0	0.00	0.0	
11	107.83	0	0.00	0.0	
12	109.17	0	0.00	0.0	
13	113.00	0	0.00	0.0	Upper Marker
14	142.26	0	0.00	0.0	
15	145.21	0	0.00	0.0	
16	149.58	0	0.00	0.0	
17	155.21	0	0.00	0.0	
18	156.15	0	0.00	0.0	

Assay Class: High Sensitivity DNA Assay
 Data Path: C:\...ents and Settings\Bioanalyzer\2014-02-26\2014-02-26_001.xad

Created: 2/26/2014 10:12:23 AM
 Modified: 2/26/2014 10:54:04 AM

Electropherogram Summary Continued ...



Overall Results for sample 3 : G-7

Number of peaks found: 25 Noise: 0.6

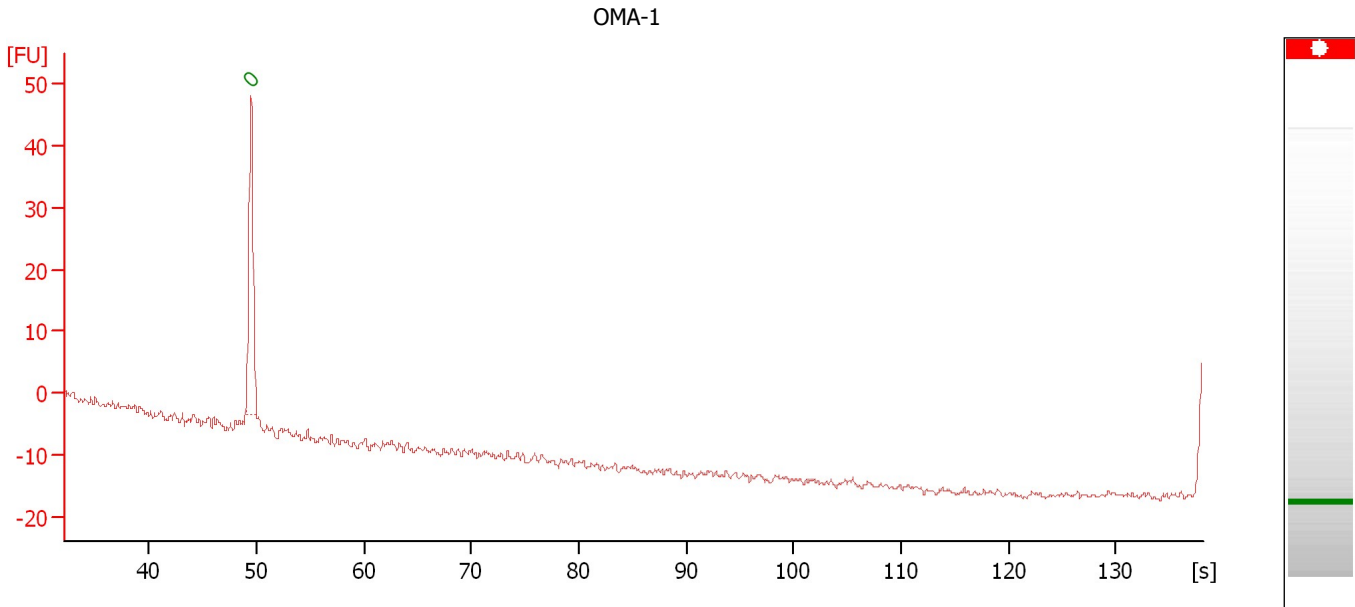
Peak table for sample 3 : G-7

Peak	Aligned Migration Time [s]	Size [bp]	Conc. [pg/μl]	Molarity [pmol/l]	Observations
1	43.00	0	0.00	0.0	Lower Marker
2	49.57	0	0.00	0.0	
3	55.26	0	0.00	0.0	
4	77.42	0	0.00	0.0	
5	79.15	0	0.00	0.0	
6	79.95	0	0.00	0.0	
7	81.29	0	0.00	0.0	
8	81.95	0	0.00	0.0	
9	83.37	0	0.00	0.0	
10	84.22	0	0.00	0.0	
11	86.79	0	0.00	0.0	
12	87.86	0	0.00	0.0	
13	88.70	0	0.00	0.0	
14	89.86	0	0.00	0.0	
15	92.30	0	0.00	0.0	
16	107.76	0	0.00	0.0	
17	108.69	0	0.00	0.0	
18	109.80	0	0.00	0.0	
19	111.67	0	0.00	0.0	
20	112.47	0	0.00	0.0	
21	113.00	0	0.00	0.0	Upper Marker
22	113.93	0	0.00	0.0	
23	114.95	0	0.00	0.0	
24	116.06	0	0.00	0.0	
25	116.64	0	0.00	0.0	
26	118.46	0	0.00	0.0	
27	119.62	0	0.00	0.0	

Assay Class: High Sensitivity DNA Assay
Data Path: C:\...ents and Settings\Bioanalyzer\2014-02-26\2014-02-26_001.xad

Created: 2/26/2014 10:12:23 AM
Modified: 2/26/2014 10:54:04 AM

Electropherogram Summary Continued ...



Overall Results for sample 4 : OMA-1

Number of peaks found: 0 Noise: 0.6

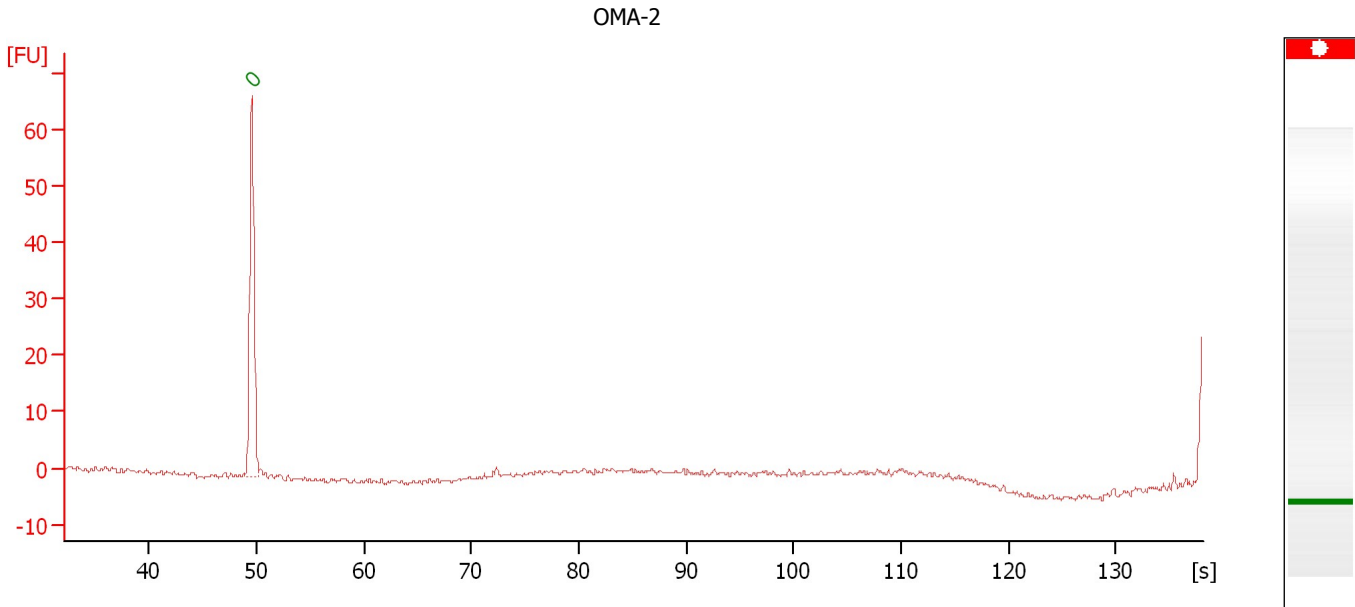
Peak table for sample 4 : OMA-1

Peak	Aligned Migration Time [s]	Size [bp]	Conc. [pg/μl]	Molarity [pmol/l]	Observations
1	49.50	0	0.00	0.0	Lower Marker

Assay Class: High Sensitivity DNA Assay
Data Path: C:\...ents and Settings\Bioanalyzer\2014-02-26\2014-02-26_001.xad

Created: 2/26/2014 10:12:23 AM
Modified: 2/26/2014 10:54:04 AM

Electropherogram Summary Continued ...



Overall Results for sample 5 : OMA-2

Number of peaks found: 0 Noise: 0.4

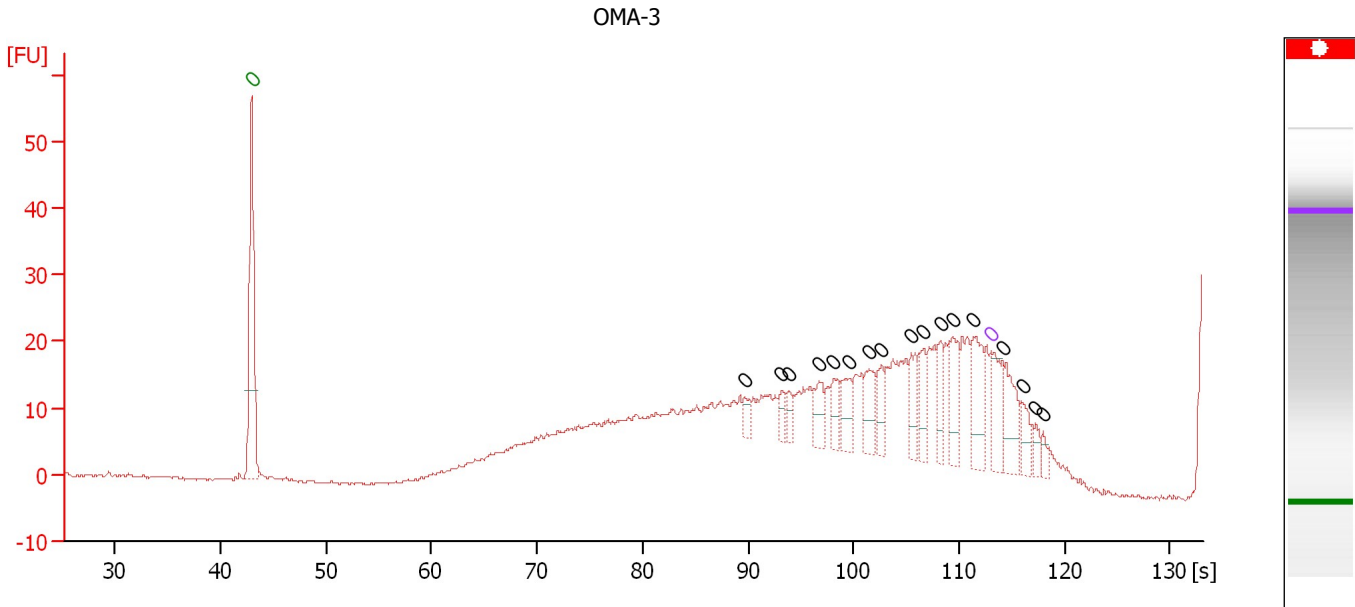
Peak table for sample 5 : OMA-2

Peak	Aligned Migration Time [s]	Size [bp]	Conc. [pg/μl]	Molarity [pmol/l]	Observations
1	49.55	0	0.00	0.0	Lower Marker

Assay Class: High Sensitivity DNA Assay
 Data Path: C:\...ents and Settings\Bioanalyzer\2014-02-26\2014-02-26_001.xad

Created: 2/26/2014 10:12:23 AM
 Modified: 2/26/2014 10:54:04 AM

Electropherogram Summary Continued ...



Overall Results for sample 6 : OMA-3

Number of peaks found: 17 Noise: 0.2

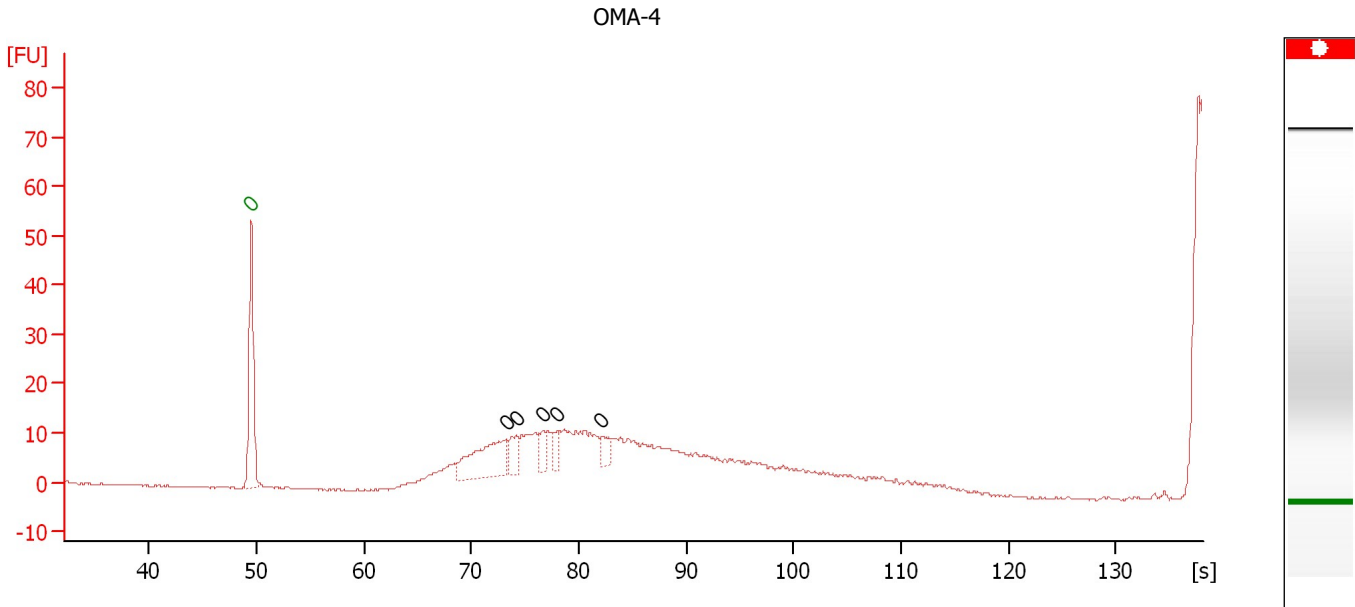
Peak table for sample 6 : OMA-3

Peak	Aligned Migration Time [s]	Size [bp]	Conc. [pg/μl]	Molarity [pmol/l]	Observations
1	43.00	0	0.00	0.0	Lower Marker
2	89.65	0	0.00	0.0	
3	93.21	0	0.00	0.0	
4	93.82	0	0.00	0.0	
5	96.72	0	0.00	0.0	
6	98.15	0	0.00	0.0	
7	99.62	0	0.00	0.0	
8	101.50	0	0.00	0.0	
9	102.62	0	0.00	0.0	
10	105.47	0	0.00	0.0	
11	106.64	0	0.00	0.0	
12	108.22	0	0.00	0.0	
13	109.39	0	0.00	0.0	
14	111.42	0	0.00	0.0	
15	113.00	0	0.00	0.0	Upper Marker
16	114.22	0	0.00	0.0	
17	116.00	0	0.00	0.0	
18	117.17	0	0.00	0.0	
19	117.93	0	0.00	0.0	

Assay Class: High Sensitivity DNA Assay
 Data Path: C:\...ents and Settings\Bioanalyzer\2014-02-26\2014-02-26_001.xad

Created: 2/26/2014 10:12:23 AM
 Modified: 2/26/2014 10:54:04 AM

Electropherogram Summary Continued ...



Overall Results for sample 7 : OMA-4

Number of peaks found: 5 Noise: 0.2

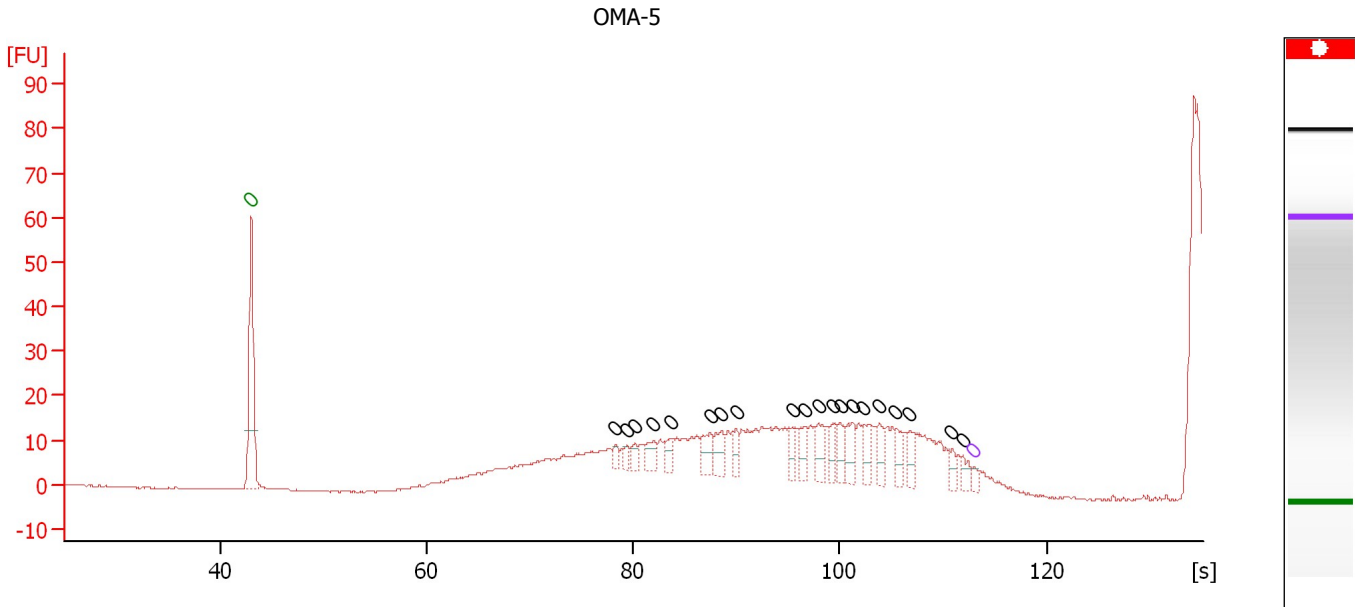
Peak table for sample 7 : OMA-4

Peak	Aligned Migration Time [s]	Size [bp]	Conc. [pg/μl]	Molarity [pmol/l]	Observations
1	49.50	0	0.00	0.0	Lower Marker
2	73.20	0	0.00	0.0	
3	74.15	0	0.00	0.0	
4	76.70	0	0.00	0.0	
5	78.00	0	0.00	0.0	
6	82.05	0	0.00	0.0	

Assay Class: High Sensitivity DNA Assay
 Data Path: C:\...ents and Settings\Bioanalyzer\2014-02-26\2014-02-26_001.xad

Created: 2/26/2014 10:12:23 AM
 Modified: 2/26/2014 10:54:04 AM

Electropherogram Summary Continued ...



Overall Results for sample 8 : OMA-5

Number of peaks found: 20 Noise: 0.1

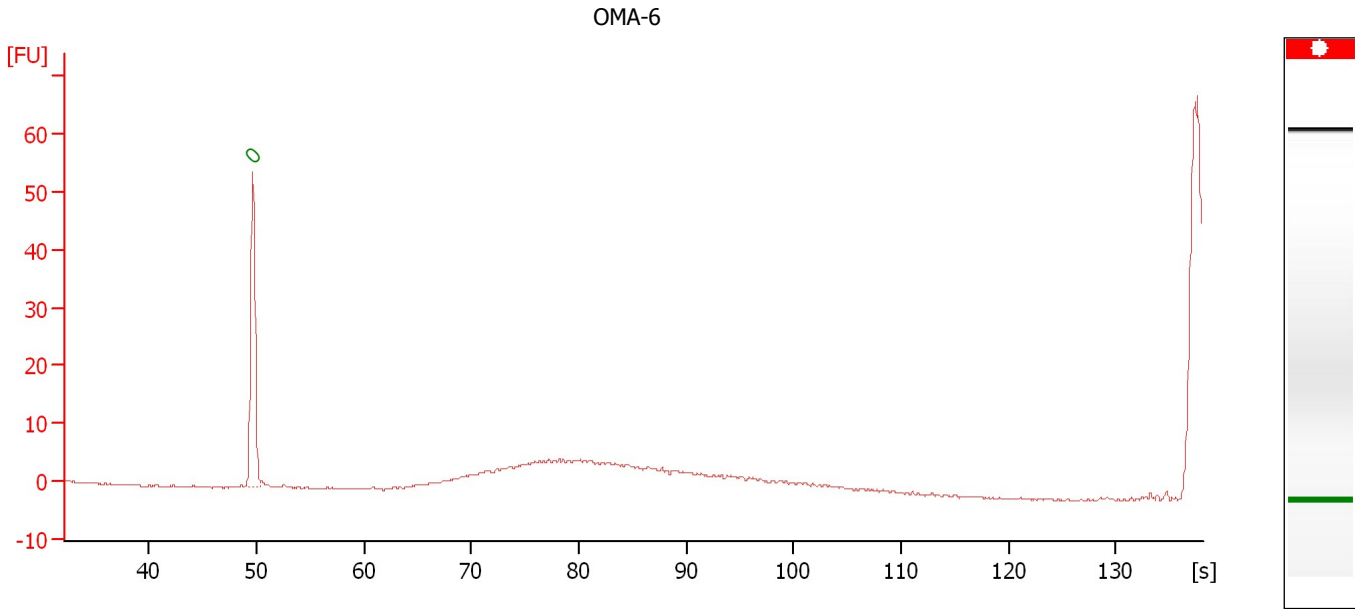
Peak table for sample 8 : OMA-5

Peak	Aligned Migration Time [s]	Size [bp]	Conc. [pg/μl]	Molarity [pmol/l]	Observations
1	43.00	0	0.00	0.0	Lower Marker
2	78.21	0	0.00	0.0	
3	79.40	0	0.00	0.0	
4	80.18	0	0.00	0.0	
5	81.95	0	0.00	0.0	
6	83.62	0	0.00	0.0	
7	87.52	0	0.00	0.0	
8	88.56	0	0.00	0.0	
9	89.96	0	0.00	0.0	
10	95.42	0	0.00	0.0	
11	96.67	0	0.00	0.0	
12	97.92	0	0.00	0.0	
13	99.37	0	0.00	0.0	
14	100.05	0	0.00	0.0	
15	101.19	0	0.00	0.0	
16	102.34	0	0.00	0.0	
17	103.79	0	0.00	0.0	
18	105.41	0	0.00	0.0	
19	106.71	0	0.00	0.0	
20	110.87	0	0.00	0.0	
21	111.86	0	0.00	0.0	
22	113.00	0	0.00	0.0	Upper Marker

Assay Class: High Sensitivity DNA Assay
Data Path: C:\...ents and Settings\Bioanalyzer\2014-02-26\2014-02-26_001.xad

Created: 2/26/2014 10:12:23 AM
Modified: 2/26/2014 10:54:04 AM

Electropherogram Summary Continued ...



Overall Results for sample 9 : OMA-6

Number of peaks found: 0 Noise: 0.2

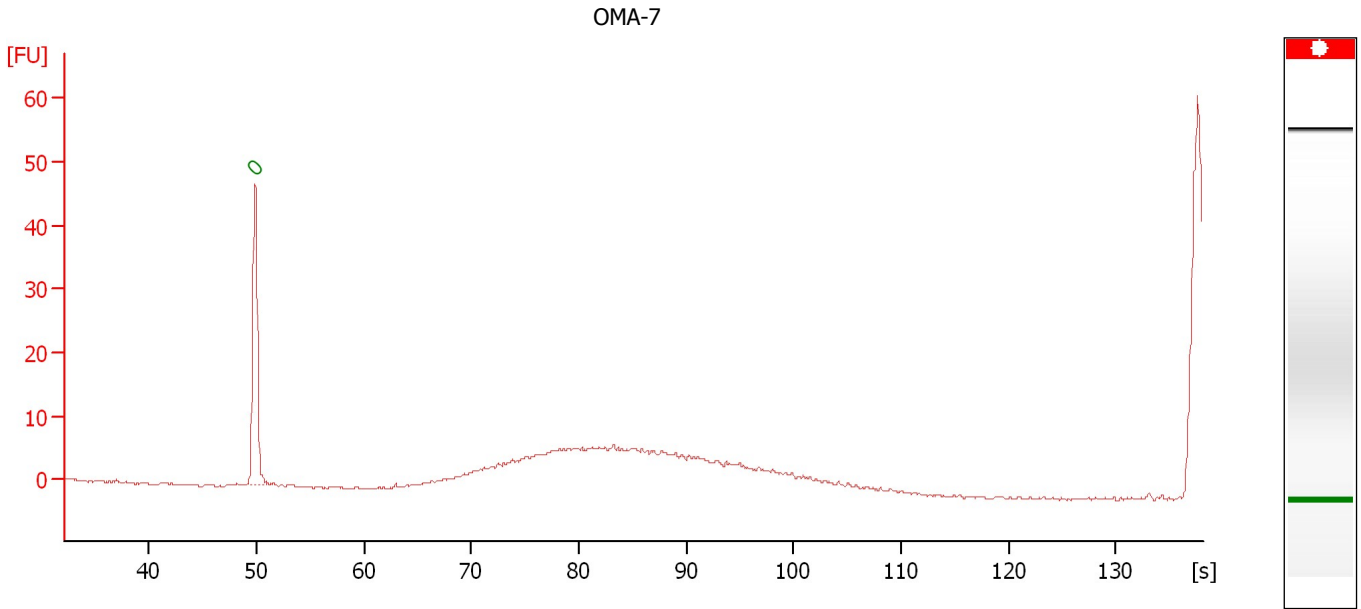
Peak table for sample 9 : OMA-6

Peak	Aligned Migration Time [s]	Size [bp]	Conc. [pg/μl]	Molarity [pmol/l]	Observations
1	49.65	0	0.00	0.0	Lower Marker

Assay Class: High Sensitivity DNA Assay
Data Path: C:\...ents and Settings\Bioanalyzer\2014-02-26\2014-02-26_001.xad

Created: 2/26/2014 10:12:23 AM
Modified: 2/26/2014 10:54:04 AM

Electropherogram Summary Continued ...



Overall Results for sample 10 : OMA-7

Number of peaks found: 0 Noise: 0.2

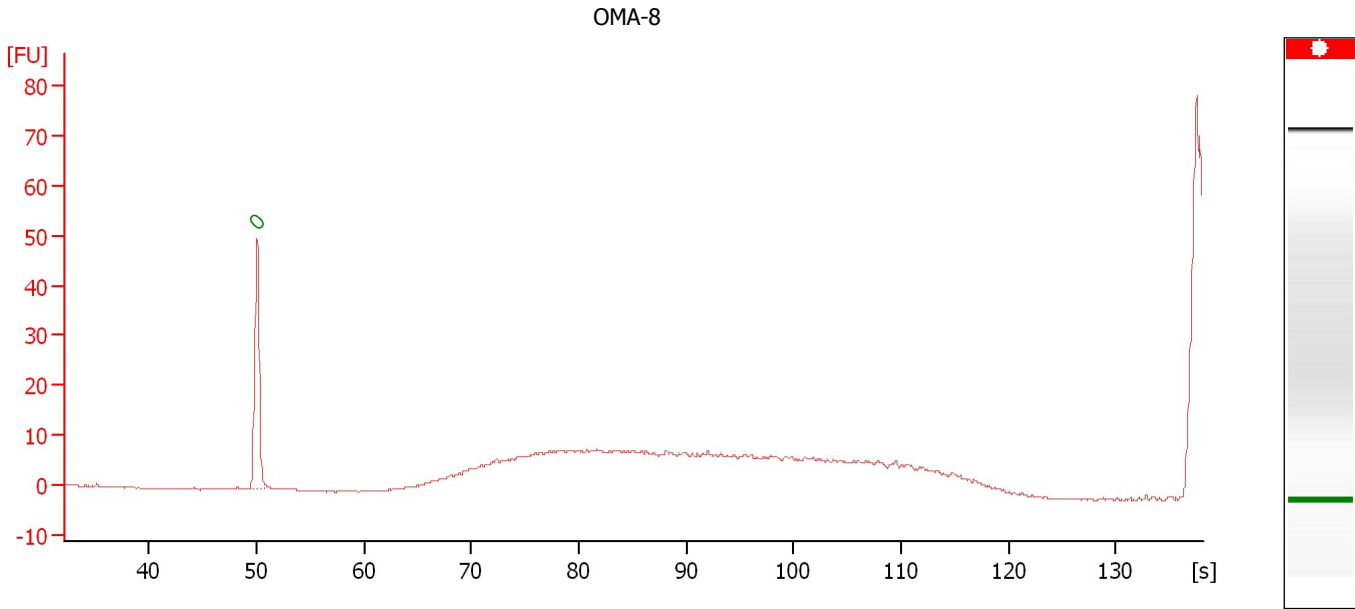
Peak table for sample 10 : OMA-7

Peak	Aligned Migration Time [s]	Size [bp]	Conc. [pg/μl]	Molarity [pmol/l]	Observations
1	49.85	0	0.00	0.0	Lower Marker

Assay Class: High Sensitivity DNA Assay
Data Path: C:\...ents and Settings\Bioanalyzer\2014-02-26\2014-02-26_001.xad

Created: 2/26/2014 10:12:23 AM
Modified: 2/26/2014 10:54:04 AM

Electropherogram Summary Continued ...



Overall Results for sample 11 : OMA-8

Number of peaks found: 0 Noise: 0.1

Peak table for sample 11 : OMA-8

Peak	Aligned Migration Time [s]	Size [bp]	Conc. [pg/μl]	Molarity [pmol/l]	Observations
1	50.05	0	0.00	0.0	Lower Marker

Assay Class: High Sensitivity DNA Assay
Data Path: C:\...ents and Settings\Bioanalyzer\2014-02-26\2014-02-26_001.xad

Created: 2/26/2014 10:12:23 AM
Modified: 2/26/2014 10:54:04 AM

Gel Image

