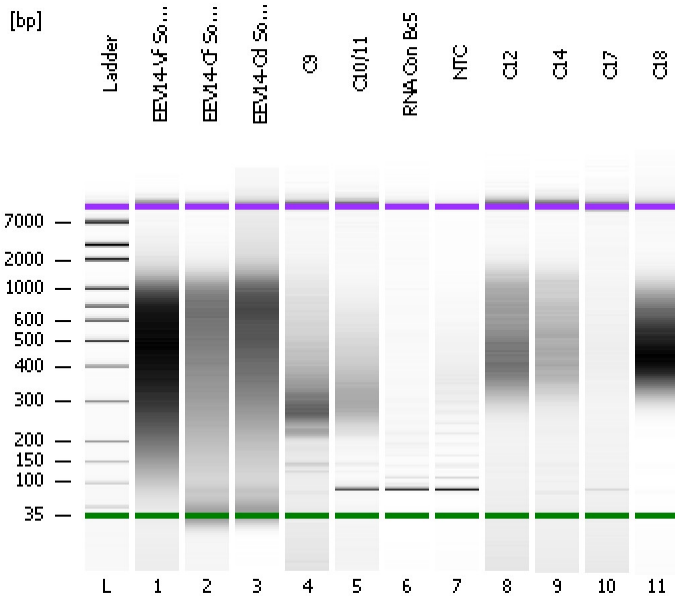


Assay Class: High Sensitivity DNA Assay
Data Path: C:\...ents and Settings\Bioanalyzer\2014-02-27\2014-02-27_001.xad

Created: 2/27/2014 8:25:42 AM
Modified: 2/27/2014 1:01:57 PM

Electrophoresis File Run Summary



Instrument Information:

Instrument Name: DE13701086 Firmware: C.01.069
Serial#: DE13701086 Type: G2938B

Assay Information:

Assay Origin Path: C:\Program Files\Agilent\2100 bioanalyzer\2100 expert\assays\dsDNA\High Sensitivity DNA.xsy
Assay Class: High Sensitivity DNA Assay
Version: 1.03
Assay Comments: Copyright © 2003-2010 Agilent Technologies

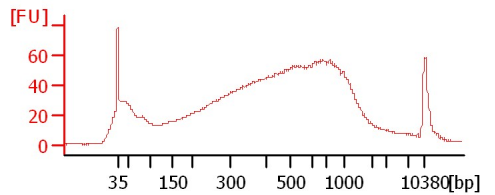
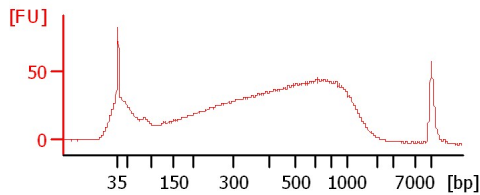
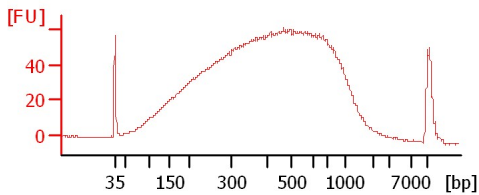
Chip Information:

Chip Lot #:
Reagent Kit Lot #:
Chip Comments:

EEV14-Vf Soni 1:4

EEV14-Cf Soni 1:4

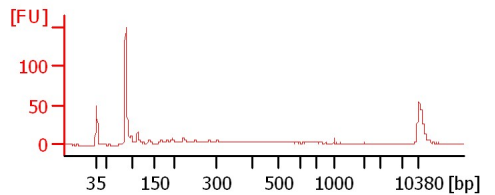
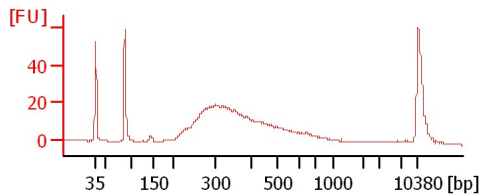
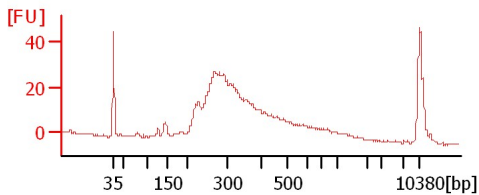
EEV14-Cd Soni 1:4



C9

C10/11

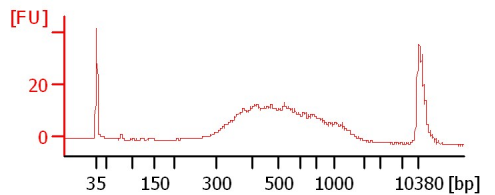
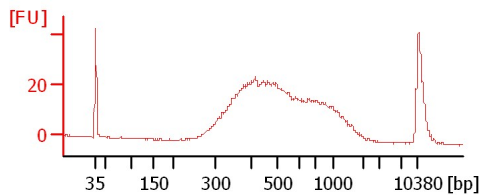
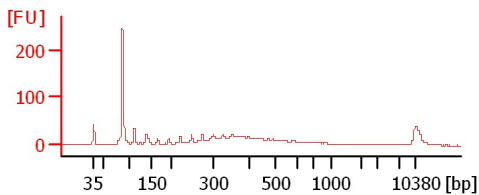
RNA Con Bc5



NTC

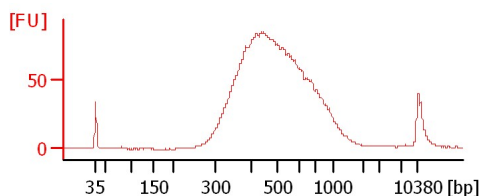
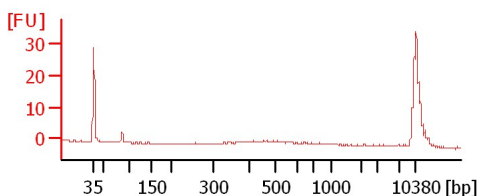
C12

C14



C17

C18



Assay Class: High Sensitivity DNA Assay
 Data Path: C:\...ents and Settings\Bioanalyzer\2014-02-27\2014-02-27_001.xad

Created: 2/27/2014 8:25:42 AM
 Modified: 2/27/2014 1:01:57 PM

Electrophoresis File Run Summary (Chip Summary)

Sample Name	Sample Comment	Rest. Digest	Status	Observation	Result Label	Result Color
EEV14-Vf Soni 1:4		<input type="checkbox"/>	✓			
EEV14-Cf Soni 1:4		<input type="checkbox"/>	✓			
EEV14-Cd Soni 1:4		<input type="checkbox"/>	✓			
C9		<input type="checkbox"/>	✓			
C10/11		<input type="checkbox"/>	✓			
RNA Con Bc5		<input type="checkbox"/>	✓			
NTC		<input type="checkbox"/>	✓			
C12		<input type="checkbox"/>	✓			
C14		<input type="checkbox"/>	✓			
C17		<input type="checkbox"/>	✓			
C18		<input type="checkbox"/>	✓			
Ladder		<input type="checkbox"/>	✓			

Chip Lot #

Reagent Kit Lot #

Chip Comments :

Assay Class: High Sensitivity DNA Assay
 Data Path: C:\...ents and Settings\Bioanalyzer\2014-02-27\2014-02-27_001.xad

Created: 2/27/2014 8:25:42 AM
 Modified: 2/27/2014 1:01:57 PM

Electrophoresis Assay Details

General Analysis Settings

Number of Available Sample and Ladder Wells (Max.) : 12
 Minimum Visible Range [s] : 32
 Maximum Visible Range [s] : 138
 Start Analysis Time Range [s] : 33
 End Analysis Time Range [s] : 137.5
 Ladder Concentration [pg/μl] : 1950
 Uses Standard Area for Ladder Fragments
 Lower Marker Concentration [pg/μl] : 125
 Upper Marker Concentration [pg/μl] : 75
 Used Upper Marker for Quantitation
 Standard Curve Fit is Point to Point
 Show Data Aligned to Lower and Upper Marker

Integrator Settings

Integration Start Time [s] : 33.05
 Integration End Time [s] : 137
 Slope Threshold : 0.8
 Height Threshold [FU] : 5
 Area Threshold : 0.1
 Width Threshold [s] : 0.6
 Baseline Plateau [s] : 0.5

Filter Settings

Filter Width [s] : 0.5
 Polynomial Order : 4

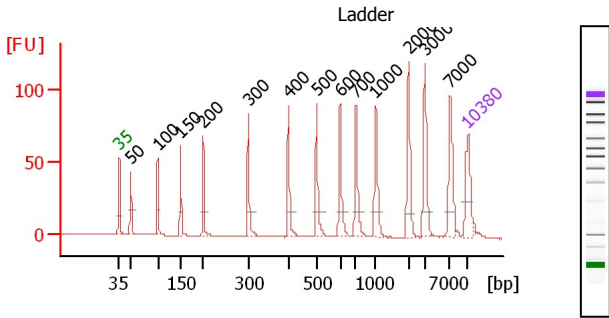
Ladder

Ladder Peak	Size	Area
1	35	160
2	50	210
3	100	208
4	150	221
5	200	242
6	300	270
7	400	305
8	500	306
9	600	336
10	700	321
11	1000	366
12	2000	413
13	3000	411
14	7000	400
15	10380	214

Assay Class: High Sensitivity DNA Assay
 Data Path: C:\...ents and Settings\Bioanalyzer\2014-02-27\2014-02-27_001.xad

Created: 2/27/2014 8:25:42 AM
 Modified: 2/27/2014 1:01:57 PM

Electropherogram Summary



Peak table for Ladder

Peak	Aligned Migration Time	Size [bp]	Conc. [pg/μl]	Molarity [pmol/l]	Observations
1	43.00	35	125.00	5,411.3	Lower Marker
2	45.31	50	150.00	4,545.5	Ladder Peak
3	50.71	100	150.00	2,272.7	Ladder Peak
4	55.32	150	150.00	1,515.2	Ladder Peak
5	59.89	200	150.00	1,136.4	Ladder Peak
6	68.90	300	150.00	757.6	Ladder Peak
7	76.95	400	150.00	568.2	Ladder Peak
8	82.61	500	150.00	454.5	Ladder Peak
9	87.31	600	150.00	378.8	Ladder Peak
10	90.49	700	150.00	324.7	Ladder Peak
11	94.47	1,000	150.00	227.3	Ladder Peak
12	101.01	2,000	150.00	113.6	Ladder Peak
13	104.37	3,000	150.00	75.8	Ladder Peak

Overall Results for Ladder

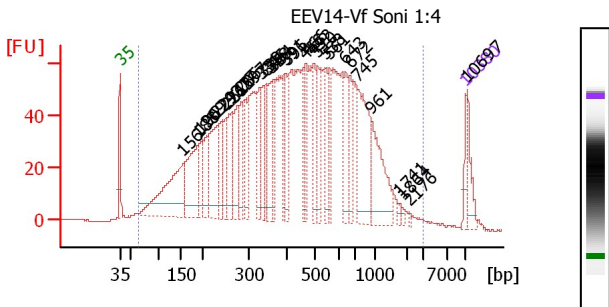
Noise: 0.1

Peak	Aligned Migration Time	Size [bp]	Conc. [pg/μl]	Molarity [pmol/l]	Observations
14	109.40	7,000	150.00	32.5	Ladder Peak
15	113.00	10,380	75.00	10.9	Upper Marker

Assay Class: High Sensitivity DNA Assay
 Data Path: C:\...ents and Settings\Bioanalyzer\2014-02-27\2014-02-27_001.xad

Created: 2/27/2014 8:25:42 AM
 Modified: 2/27/2014 1:01:57 PM

Electropherogram Summary Continued ...



Peak table for sample 1

Peak	Aligned Migration Time	Size [bp]	Conc. [pg/μl]	Molarity [pmol/l]	Observations
1	43.00	35	125.00	5,411.3	Lower Marker
2	55.88	156	936.37	9,091.1	
3	58.83	188	647.48	5,207.2	
4	59.51	196	184.68	1,429.1	
5	60.69	209	300.08	2,177.0	
6	62.55	229	549.65	3,629.3	
7	63.73	243	280.72	1,753.4	
8	64.53	251	236.41	1,424.3	
9	65.76	265	354.12	2,024.1	
10	66.85	277	322.55	1,762.7	
11	67.66	286	236.47	1,252.1	
12	68.67	297	173.63	884.6	
13	71.37	331	240.67	1,102.8	
14	72.05	339	200.80	897.3	
15	72.55	345	173.87	762.8	
16	73.61	358	276.86	1,170.2	
17	74.07	364	172.58	717.9	
18	76.23	391	168.01	651.1	
19	76.61	396	180.47	691.0	
20	80.24	458	165.86	548.6	
21	80.66	466	192.28	625.8	
22	82.18	492	277.50	853.9	
23	83.07	510	207.50	616.8	
24	84.42	538	232.52	654.2	
25	85.47	561	145.13	392.0	
26	88.68	643	247.35	582.7	

Overall Results for sample 1

Number of peaks found: 32
 Noise: 0.2
 Corr. Area 1: 3,015.4

Region table for sample 1

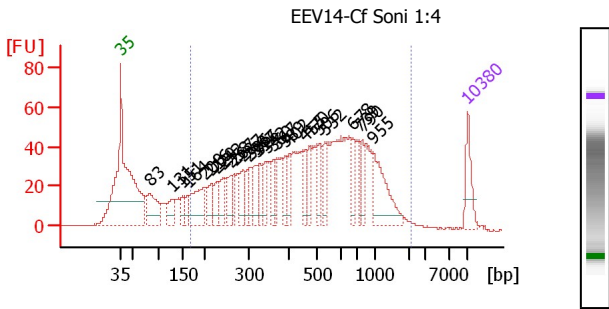
From [bp]	To [bp]	Average Size [bp]	Molarity [pmol/l]	Conc. [pg/μl]	Corr. Area	% of Total	% of CV
64	3,068	495	65,937.4	12,658.88	3,015.97	68.0	4

Peak	Aligned Migration Time	Size [bp]	Conc. [pg/μl]	Molarity [pmol/l]	Observations
27	89.61	672	182.58	411.4	
28	91.09	745	546.63	1,111.7	
29	93.96	961	413.83	652.3	
30	99.32	1,741	18.69	16.3	
31	100.12	1,864	13.48	11.0	
32	101.60	2,176	9.05	6.3	
33	113.00	10,380	75.00	10.9	Upper Marker
34	113.34	10,697	0.00	0.0	

Assay Class: High Sensitivity DNA Assay
 Data Path: C:\...ents and Settings\Bioanalyzer\2014-02-27\2014-02-27_001.xad

Created: 2/27/2014 8:25:42 AM
 Modified: 2/27/2014 1:01:57 PM

Electropherogram Summary Continued ...



Peak table for sample 2

Peak	Aligned Migration Time	Size [bp]	Conc. [pg/μl]	Molarity [pmol/l]	Observations
1	43.00	35	125.00	5,411.3	Lower Marker
2	48.90	83	199.71	3,636.6	
3	53.57	131	94.82	1,096.6	
4	55.42	151	50.37	505.1	
5	56.60	164	59.79	552.4	
6	59.89	200	199.33	1,510.3	
7	61.32	216	97.47	684.2	
8	62.54	229	77.43	511.4	
9	63.68	242	80.73	505.4	
10	65.15	258	76.00	445.7	
11	65.95	267	48.59	275.5	
12	67.72	287	100.80	532.3	
13	68.69	298	55.60	283.0	
14	69.41	306	59.89	296.3	
15	70.25	317	87.83	420.2	
16	71.01	326	57.04	265.0	
17	72.31	342	62.50	276.6	
18	73.75	360	59.05	248.4	
19	74.34	367	56.11	231.4	
20	76.10	389	75.09	292.1	
21	77.07	402	55.59	209.4	
22	80.06	455	63.71	212.2	
23	80.91	470	61.54	198.5	
24	82.89	506	58.64	175.6	
25	84.11	532	43.72	124.5	
26	89.79	678	57.93	129.4	

Overall Results for sample 2

Number of peaks found: 28
 Noise: 0.2
 Corr. Area 1: 1,897.6

Region table for sample 2

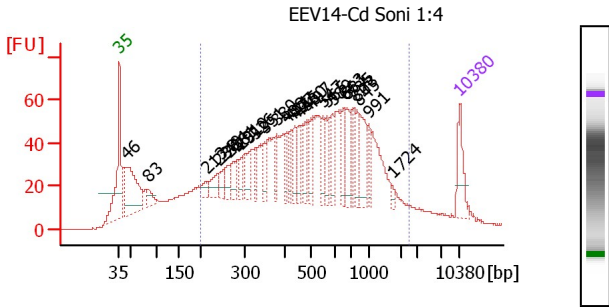
From [bp]	To [bp]	Average Size [bp]	Molarity [pmol/l]	Conc. [pg/μl]	Corr. Area	% of Size distribution Total in CV [%]
169	2,217	547	12,558.9	3,095.4	1,897.87	58.2

Peak	Aligned Migration Time	Size [bp]	Conc. [pg/μl]	Molarity [pmol/l]	Observations
27	91.01	739	45.96	94.2	
28	91.69	790	49.51	94.9	
29	93.88	955	183.38	290.9	
30	113.00	10,380	75.00	10.9	Upper Marker

Assay Class: High Sensitivity DNA Assay
 Data Path: C:\...ents and Settings\Bioanalyzer\2014-02-27\2014-02-27_001.xad

Created: 2/27/2014 8:25:42 AM
 Modified: 2/27/2014 1:01:57 PM

Electropherogram Summary Continued ...



Peak table for sample 3

Peak	Aligned Migration Time	Size [bp]	Conc. [pg/μl]	Molarity [pmol/l]	Observations
1	43.00	35	125.00	5,411.3	Lower Marker
2	44.63	46	350.68	11,645.8	
3	48.84	83	50.80	930.4	
4	61.09	213	35.99	255.7	
5	63.28	238	67.52	430.5	
6	64.31	249	42.48	258.4	
7	65.65	264	48.30	277.3	
8	67.19	281	76.73	413.7	
9	68.10	291	51.33	267.2	
10	69.69	310	61.05	298.7	
11	71.02	326	43.55	202.3	
12	73.04	351	47.67	205.6	
13	75.31	380	39.14	156.2	
14	77.42	408	51.17	189.9	
15	78.15	421	40.06	144.1	
16	79.05	437	60.59	210.0	
17	80.08	455	64.30	214.0	
18	81.50	480	66.72	210.4	
19	82.45	497	68.06	207.4	
20	84.81	547	68.44	189.6	
21	85.67	565	41.54	111.4	
22	86.79	589	69.54	178.9	
23	89.32	663	67.75	154.8	
24	89.88	681	77.66	172.8	
25	90.96	735	42.91	88.4	
26	91.86	803	40.67	76.7	

Overall Results for sample 3

Number of peaks found: 28
 Noise: 0.2
 Corr. Area 1: 2,094.6

Region table for sample 3

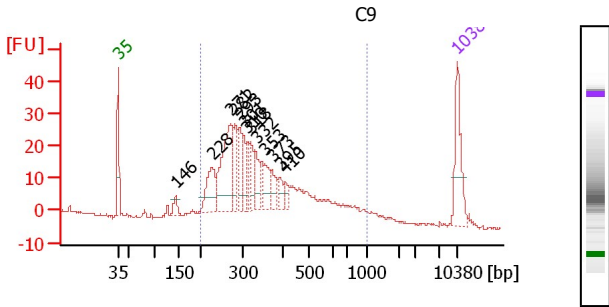
From [bp]	To [bp]	Average Size [bp]	Molarity [pmol/l]	Conc. [pg/μl]	Corr. Area	% of Total	% of CV
200	2,425	605	12,342.8	3,382.8	2,094.76	62.1	

Peak	Aligned Migration Time	Size [bp]	Conc. [pg/μl]	Molarity [pmol/l]	Observations
27	92.42	845	114.34	205.0	
28	94.35	991	33.15	50.7	
29	99.21	1,724	9.27	8.1	
30	113.00	10,380	75.00	10.9	Upper Marker

Assay Class: High Sensitivity DNA Assay
 Data Path: C:\...ents and Settings\Bioanalyzer\2014-02-27\2014-02-27_001.xad

Created: 2/27/2014 8:25:42 AM
 Modified: 2/27/2014 1:01:57 PM

Electropherogram Summary Continued ...



Peak table for sample 4 : C9

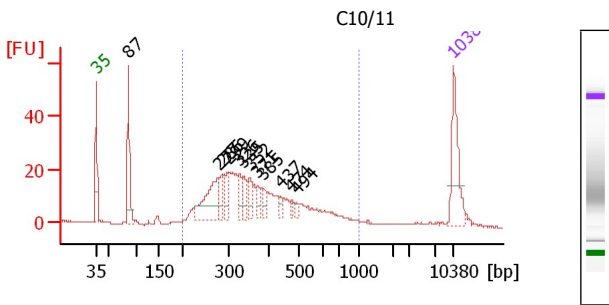
Peak	Aligned Migration Time	Size [bp]	Conc. [pg/μl]	Molarity [pmol/l]	Observations
1	43.00	35	125.00	5,411.3	Lower Marker
2	54.95	146	23.64	245.4	
3	62.38	228	98.85	658.1	
4	66.30	271	208.76	1,166.5	
5	67.25	282	73.56	395.7	
6	68.25	293	74.67	386.5	
7	68.98	301	35.07	176.6	
8	69.71	310	43.00	210.1	
9	70.36	318	56.97	271.3	
10	71.48	332	45.37	207.0	
11	73.21	353	51.48	220.7	
12	74.81	373	32.98	133.8	
13	76.58	395	23.21	89.0	
14	77.53	410	15.34	56.7	
15	113.00	10,380	75.00	10.9	Upper Marker

Overall Results for sample 4 : C9

Number of peaks found: 13
 Noise: 0.3
 Corr. Area 1: 624.3

Region table for sample 4 : C9

From To [bp]	Average Size [bp]	Molarity [pmol/l]	Conc. [pg/μl]	Corr. Area	% of Size distribution Total in CV [%]
200	1,000	372	5,338.8	1,128.9	624.3 94 38.6



Peak table for sample 5 : C10/11

Peak	Aligned Migration Time	Size [bp]	Conc. [pg/μl]	Molarity [pmol/l]	Observations
1	43.00	35	125.00	5,411.3	Lower Marker
2	49.33	87	126.92	2,205.3	
3	66.83	277	119.64	654.5	
4	67.66	286	29.88	158.2	
5	68.84	299	30.59	154.9	
6	71.02	326	30.41	141.2	
7	71.76	335	33.12	149.6	
8	73.11	352	32.15	138.3	
9	74.64	371	20.96	85.5	
10	75.73	385	17.14	67.5	
11	79.05	437	7.92	27.5	
12	81.14	474	7.62	24.4	
13	82.28	494	5.90	18.1	
14	113.00	10,380	75.00	10.9	Upper Marker

Overall Results for sample 5 : C10/11

Number of peaks found: 12
 Noise: 0.2
 Corr. Area 1: 484.2

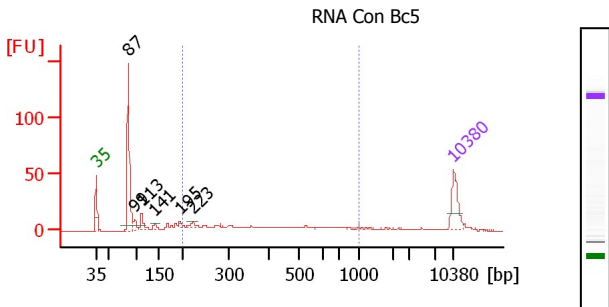
Region table for sample 5 : C10/11

From To [bp]	Average Size [bp]	Molarity [pmol/l]	Conc. [pg/μl]	Corr. Area	% of Size distribution Total in CV [%]
200	1,000	387	3,170.4	709.26	484.2 82 34.7

Assay Class: High Sensitivity DNA Assay
 Data Path: C:\...ents and Settings\Bioanalyzer\2014-02-27\2014-02-27_001.xad

Created: 2/27/2014 8:25:42 AM
 Modified: 2/27/2014 1:01:57 PM

Electropherogram Summary Continued ...



Peak table for sample 6 : RNA Con Bc5

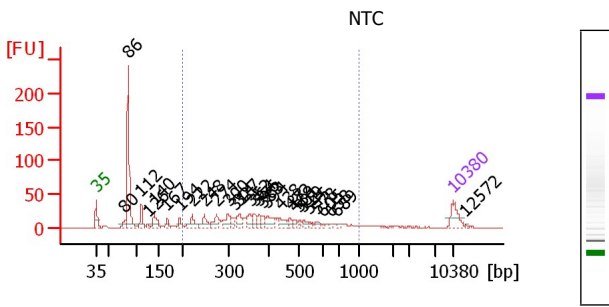
Peak	Aligned Migration Time	Size [bp]	Conc. [pg/μl]	Molarity [pmol/l]	Observations
1	43.00	35	125.00	5,411.3	Lower Marker
2	49.28	87	376.58	6,577.2	
3	50.55	99	31.38	482.6	
4	51.91	113	43.89	588.3	
5	54.46	141	16.38	176.4	
6	59.42	195	15.02	116.8	
7	61.93	223	19.49	132.7	
8	113.00	10,380	75.00	10.9	Upper Marker

Overall Results for sample 6 : RNA Con Bc5

Number of peaks found: 6
 Noise: 0.2
 Corr. Area 1: 161.9

Region table for sample 6 : RNA Con Bc5

From [bp]	To [bp]	Average Size [bp]	Molarity [pmol/l]	Conc. [pg/μl]	Corr. Area	% of Total Area	% of Size distribution
200	1,000	420	1,249.0	272.31	161.9	35	44.0



Peak table for sample 7 : NTC

Peak	Aligned Migration Time	Size [bp]	Conc. [pg/μl]	Molarity [pmol/l]	Observations
1	43.00	35	125.00	5,411.3	Lower Marker
2	48.51	80	35.46	674.5	
3	49.22	86	681.15	11,973.9	
4	51.82	112	89.86	1,215.3	
5	53.14	126	12.53	150.2	
6	54.38	140	88.58	960.3	
7	56.85	167	30.74	279.3	
8	59.36	194	34.20	266.8	
9	61.83	222	66.84	457.1	
10	64.22	248	65.64	401.0	
11	66.60	274	64.10	353.9	
12	68.89	300	72.90	368.3	
13	70.04	314	34.90	168.4	
14	71.10	327	57.23	265.0	
15	73.13	352	56.35	242.2	
16	74.05	364	41.62	173.2	
17	75.02	376	31.35	126.3	
18	75.60	383	32.79	129.7	
19	76.48	394	61.23	235.4	
20	79.08	438	45.09	156.1	
21	81.02	472	24.25	77.9	
22	81.90	488	18.78	58.4	
23	82.65	501	13.66	41.3	
24	83.49	519	22.30	65.1	
25	84.73	545	12.23	34.0	

Overall Results for sample 7 : NTC

Number of peaks found: 29
 Noise: 0.3
 Corr. Area 1: 518.0

Region table for sample 7 : NTC

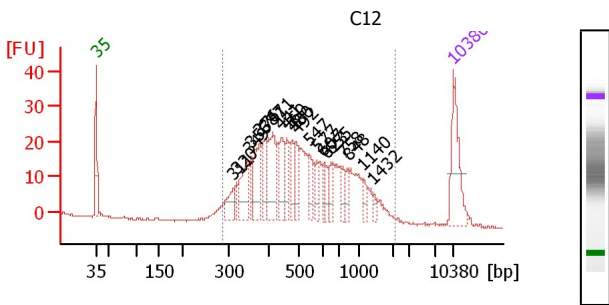
From [bp]	To [bp]	Average Size [bp]	Molarity [pmol/l]	Conc. [pg/μl]	Corr. Area	% of Total Area	% of Size distribution
200	1,000	407	4,189.4	966.76	518.0	55	36.0

Assay Class: High Sensitivity DNA Assay
 Data Path: C:\...ents and Settings\Bioanalyzer\2014-02-27\2014-02-27_001.xad

Created: 2/27/2014 8:25:42 AM
 Modified: 2/27/2014 1:01:57 PM

Electropherogram Summary Continued ...

Peak	Aligned Migration Time	Size [bp]	Conc. [pg/μl]	Molarity [pmol/l]	Observations
26	86.27	578	18.91	49.6	
27	87.46	605	6.55	16.4	
28	89.14	658	7.10	16.4	
29	90.15	689	6.73	14.8	
30	113.00	10,380	75.00	10.9	Upper Marker
31	115.34	12,572	0.00	0.0	



Overall Results for sample 8 : C12

Number of peaks found: 20
 Noise: 0.2
 Corr. Area 1: 631.7

Region table for sample 8 : C12

From [bp]	To [bp]	Average Size [bp]	Molarity [pmol/l]	Conc. [pg/μl]	Corr. Area	% of Total	Size distribution in CV [%]
288	2,203	603	3,162.3	1,002.9	631.7	97	52.5

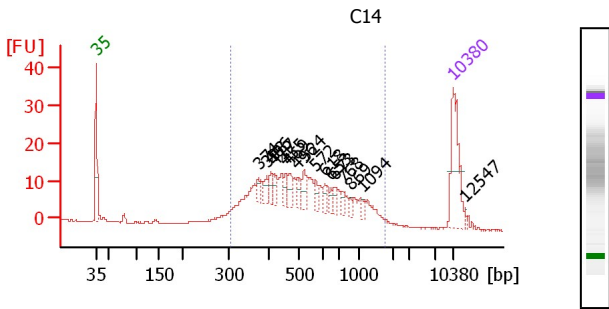
Peak table for sample 8 : C12

Peak	Aligned Migration Time	Size [bp]	Conc. [pg/μl]	Molarity [pmol/l]	Observations
1	43.00	35	125.00	5,411.3	Lower Marker
2	69.79	311	35.00	170.5	
3	70.50	320	14.67	69.5	
4	72.85	349	71.07	308.5	
5	73.43	356	26.44	112.5	
6	75.03	376	68.07	274.2	
7	75.92	387	46.74	182.9	
8	77.56	411	85.30	314.7	
9	79.29	441	55.55	190.7	
10	80.35	460	29.41	96.9	
11	81.46	480	32.70	103.3	
12	82.17	492	35.29	108.6	
13	84.83	547	32.94	91.2	
14	86.21	577	22.71	59.7	
15	87.54	607	16.32	40.7	
16	88.03	623	15.67	38.1	
17	89.05	655	18.73	43.4	
18	91.26	758	18.01	36.0	
19	92.46	848	19.13	34.2	
20	95.39	1,140	15.02	20.0	
21	97.30	1,432	6.96	7.4	
22	113.00	10,380	75.00	10.9	Upper Marker

Assay Class: High Sensitivity DNA Assay
 Data Path: C:\...ents and Settings\Bioanalyzer\2014-02-27\2014-02-27_001.xad

Created: 2/27/2014 8:25:42 AM
 Modified: 2/27/2014 1:01:57 PM

Electropherogram Summary Continued ...



Peak table for sample 9 : **C14**

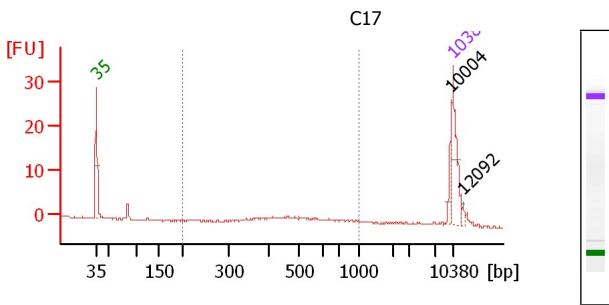
Peak	Aligned Migration Time	Size [bp]	Conc. [pg/μl]	Molarity [pmol/l]	Observations
1	43.00	35	125.00	5,411.3	Lower Marker
2	74.82	374	10.79	43.8	
3	76.42	393	16.85	64.9	
4	77.31	406	16.60	61.9	
5	77.89	417	16.24	59.1	
6	80.07	455	14.38	47.9	
7	80.87	469	20.48	66.2	
8	82.38	496	16.21	49.5	
9	83.76	524	20.92	60.4	
10	85.98	572	12.19	32.3	
11	87.89	618	8.68	21.3	
12	89.00	653	7.11	16.5	
13	89.62	673	11.82	26.6	
14	91.40	768	7.21	14.2	
15	92.73	869	5.74	10.0	
16	95.09	1,094	4.61	6.4	
17	113.00	10,380	75.00	10.9	Upper Marker
18	115.31	12,547	0.00	0.0	

Overall Results for sample 9 : C14

Number of peaks found: 16
 Noise: 0.2
 Corr. Area 1: 356.3

Region table for sample 9 : C14

From To [bp]	Average Size [bp]	Molarity [pmol/l]	Conc. [pg/μl]	Corr. Area	% of Size distribution Total in CV [%]
306	1,797	595	1,895.1	613.14	356.3 93 47.2



Peak table for sample 10 : **C17**

Peak	Aligned Migration Time	Size [bp]	Conc. [pg/μl]	Molarity [pmol/l]	Observations
1	43.00	35	125.00	5,411.3	Lower Marker
2	112.60	10,004	30.72	4.7	
3	113.00	10,380	75.00	10.9	Upper Marker
4	114.83	12,092	0.00	0.0	

Overall Results for sample 10 : C17

Number of peaks found: 2
 Noise: 0.1
 Corr. Area 1: 14.5

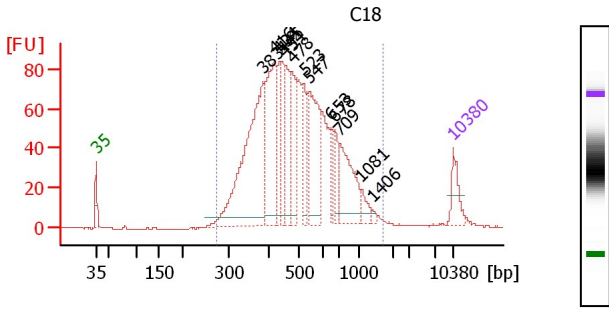
Region table for sample 10 : C17

From To [bp]	Average Size [bp]	Molarity [pmol/l]	Conc. [pg/μl]	Corr. Area	% of Size distribution Total in CV [%]
200	1,000	560	136.1	46.17	14.5 37 27.5

Assay Class: High Sensitivity DNA Assay
 Data Path: C:\...ents and Settings\Bioanalyzer\2014-02-27\2014-02-27_001.xad

Created: 2/27/2014 8:25:42 AM
 Modified: 2/27/2014 1:01:57 PM

Electropherogram Summary Continued ...



Peak table for sample 11 :

Peak	Aligned Migration Time	Size [bp]	Conc. [pg/μl]	Molarity [pmol/l]	Observations
1	43.00	35	125.00	5,411.3	Lower Marker
2	75.60	383	870.57	3,441.8	
3	77.86	416	501.76	1,827.0	
4	78.86	434	160.99	562.4	
5	79.49	445	150.49	512.5	
6	79.99	454	208.63	696.8	
7	81.39	478	196.41	622.0	
8	83.70	523	95.33	276.1	
9	84.83	547	359.39	995.1	
10	88.99	653	72.94	169.3	
11	89.80	678	84.78	189.4	
12	90.62	709	267.50	571.3	
13	95.00	1,081	44.69	62.6	
14	97.13	1,406	8.54	9.2	
15	113.00	10,380	75.00	10.9	Upper Marker

Overall Results for sample 11 :

Number of peaks found: 13
 Noise: 0.2
 Corr. Area 1: 1,884.7

Region table for sample 11 :

From [bp]	To [bp]	Average Size [bp]	Molarity [pmol/l]	Conc. [pg/μl]	Area	Corr. Area	% of Total	% of Size distribution
276	1,733	529	11,996.7	3,673.6	1,884.98	37.9		

276 1,733 529 11,996.7 3,673.6 1,884.98 37.9

Assay Class: High Sensitivity DNA Assay
Data Path: C:\...ents and Settings\Bioanalyzer\2014-02-27\2014-02-27_001.xad

Created: 2/27/2014 8:25:42 AM
Modified: 2/27/2014 1:01:57 PM

Gel Image

