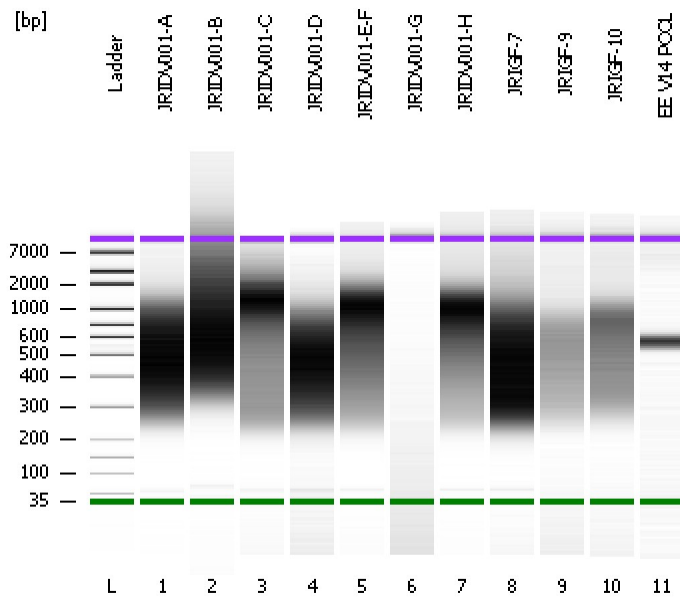


Assay Class: High Sensitivity DNA Assay
Data Path: C:\...ents and Settings\Bioanalyzer\2014-03-13\2014-03-13_002.xad

Created: 3/13/2014 4:25:08 PM
Modified: 3/13/2014 5:14:11 PM

Electrophoresis File Run Summary



Instrument Information:

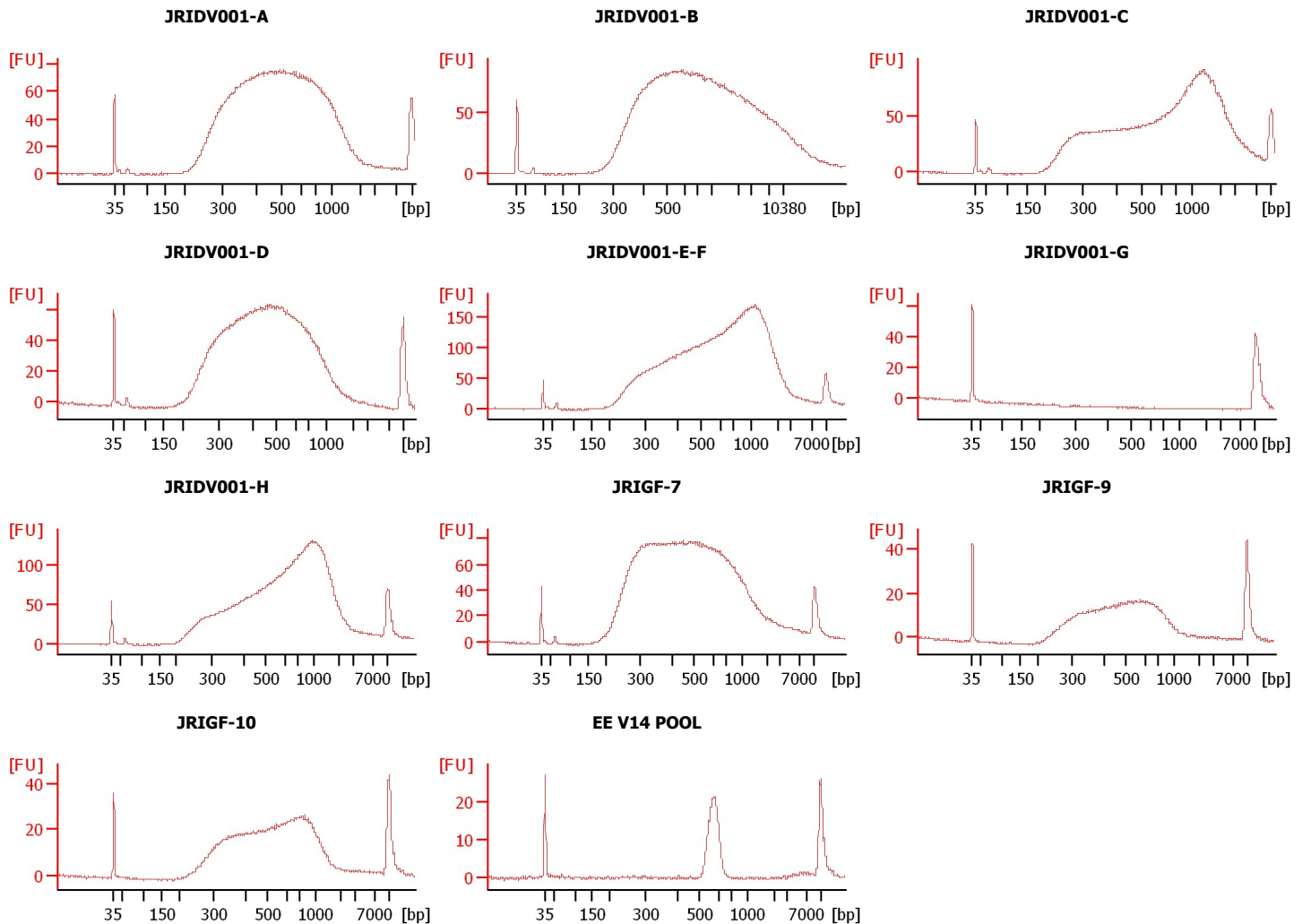
Instrument Name: DE13701086 Firmware: C.01.069
Serial#: DE13701086 Type: G2938B

Assay Information:

Assay Origin Path: C:\Program Files\Agilent\2100 bioanalyzer\2100 expert\assays\dsDNA\High Sensitivity DNA.xsy
Assay Class: High Sensitivity DNA Assay
Version: 1.03
Assay Comments: Copyright © 2003-2010 Agilent Technologies

Chip Information:

Chip Lot #:
Reagent Kit Lot #:
Chip Comments:



Assay Class: High Sensitivity DNA Assay
 Data Path: C:\...ents and Settings\Bioanalyzer\2014-03-13\2014-03-13_002.xad

Created: 3/13/2014 4:25:08 PM
 Modified: 3/13/2014 5:14:11 PM

Electrophoresis File Run Summary (Chip Summary)

Sample Name	Sample Comment	Rest. Digest	Status	Observation	Result Label	Result Color
JRIDV001-A		<input type="checkbox"/>	✓			
JRIDV001-B		<input type="checkbox"/>	✓			
JRIDV001-C		<input type="checkbox"/>	✓			
JRIDV001-D		<input type="checkbox"/>	✓			
JRIDV001-E-F		<input type="checkbox"/>	✓			
JRIDV001-G		<input type="checkbox"/>	✓			
JRIDV001-H		<input type="checkbox"/>	✓			
JRIGF-7		<input type="checkbox"/>	✓			
JRIGF-9		<input type="checkbox"/>	✓			
JRIGF-10		<input type="checkbox"/>	✓			
EE V14 POOL		<input type="checkbox"/>	✓			
Ladder		<input type="checkbox"/>	✓			

Chip Lot #

Reagent Kit Lot #

Chip Comments :

Assay Class: High Sensitivity DNA Assay
Data Path: C:\...ents and Settings\Bioanalyzer\2014-03-13\2014-03-13_002.xad

Created: 3/13/2014 4:25:08 PM
Modified: 3/13/2014 5:14:11 PM

Electrophoresis Assay Details

General Analysis Settings

Number of Available Sample and Ladder Wells (Max.) : 12
Minimum Visible Range [s] : 32
Maximum Visible Range [s] : 138
Start Analysis Time Range [s] : 33
End Analysis Time Range [s] : 137.5
Ladder Concentration [pg/μl] : 1950
Uses Standard Area for Ladder Fragments
Lower Marker Concentration [pg/μl] : 125
Upper Marker Concentration [pg/μl] : 75
Used Upper Marker for Quantitation
Standard Curve Fit is Point to Point
Show Data Aligned to Lower and Upper Marker

Integrator Settings

Integration Start Time [s] : 33.05
Integration End Time [s] : 137
Slope Threshold : 0.8
Height Threshold [FU] : 5
Area Threshold : 0.1
Width Threshold [s] : 0.6
Baseline Plateau [s] : 0.5

Filter Settings

Filter Width [s] : 0.5
Polynomial Order : 4

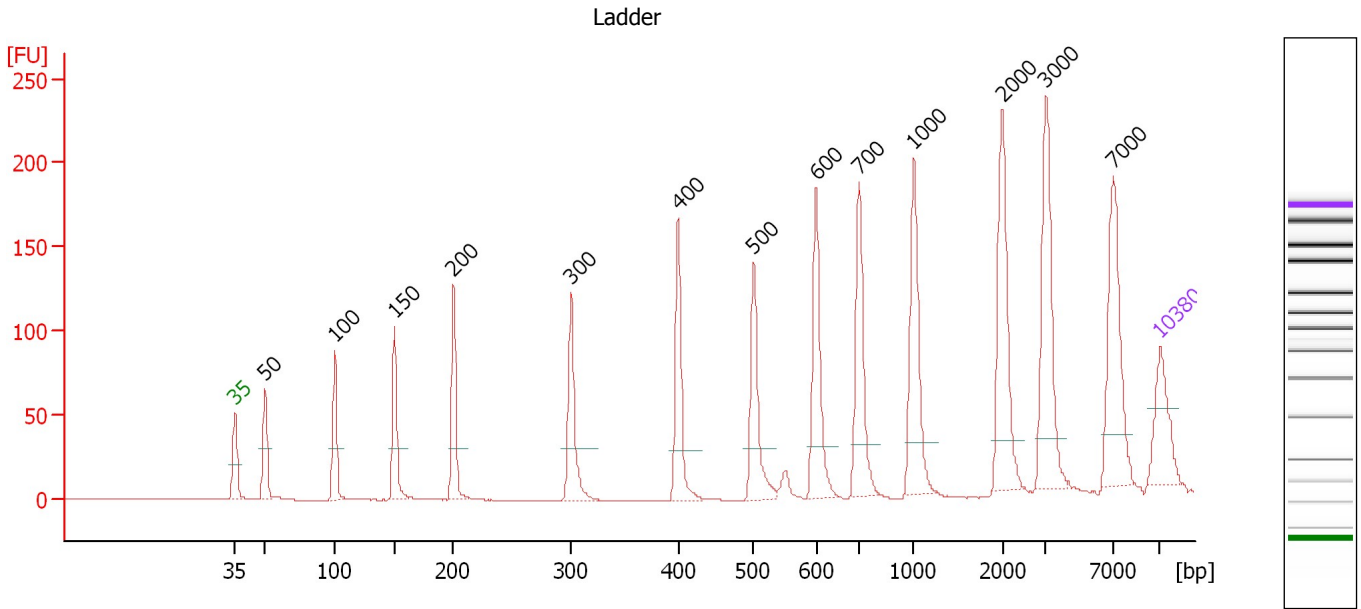
Ladder

Ladder Peak	Size	Area
1	35	160
2	50	210
3	100	208
4	150	221
5	200	242
6	300	270
7	400	305
8	500	306
9	600	336
10	700	321
11	1000	366
12	2000	413
13	3000	411
14	7000	400
15	10380	214

Assay Class: High Sensitivity DNA Assay
 Data Path: C:\...ents and Settings\Bioanalyzer\2014-03-13\2014-03-13_002.xad

Created: 3/13/2014 4:25:08 PM
 Modified: 3/13/2014 5:14:11 PM

Electropherogram Summary



Overall Results for Ladder

Noise: 0.2

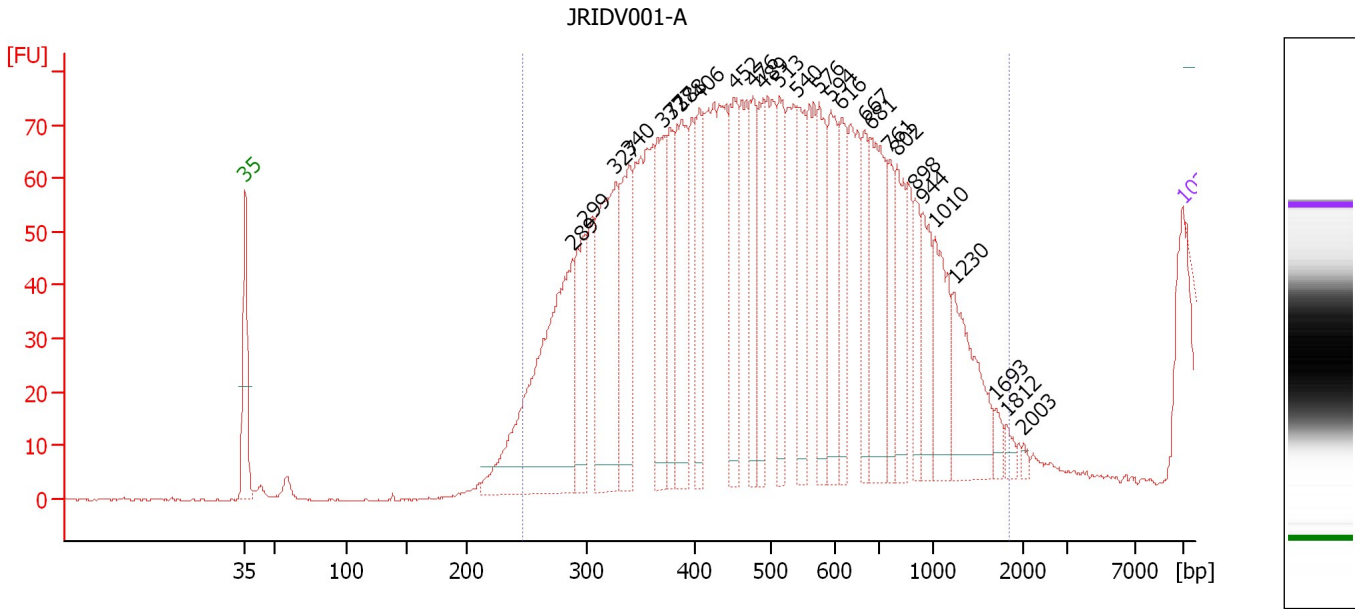
Peak table for Ladder

Peak	Aligned Migration Time [s]	Size [bp]	Conc. [pg/μl]	Molarity [pmol/l]	Observations
1	43.00	35	125.00	5,411.3	Lower Marker
2	45.26	50	150.00	4,545.5	Ladder Peak
3	50.54	100	150.00	2,272.7	Ladder Peak
4	55.06	150	150.00	1,515.2	Ladder Peak
5	59.54	200	150.00	1,136.4	Ladder Peak
6	68.42	300	150.00	757.6	Ladder Peak
7	76.53	400	150.00	568.2	Ladder Peak
8	82.26	500	150.00	454.5	Ladder Peak
9	86.98	600	150.00	378.8	Ladder Peak
10	90.24	700	150.00	324.7	Ladder Peak
11	94.36	1,000	150.00	227.3	Ladder Peak
12	101.06	2,000	150.00	113.6	Ladder Peak
13	104.37	3,000	150.00	75.8	Ladder Peak
14	109.45	7,000	150.00	32.5	Ladder Peak
15	113.00	10,380	75.00	10.9	Upper Marker

Assay Class: High Sensitivity DNA Assay
 Data Path: C:\...ents and Settings\Bioanalyzer\2014-03-13\2014-03-13_002.xad

Created: 3/13/2014 4:25:08 PM
 Modified: 3/13/2014 5:14:11 PM

Electropherogram Summary Continued ...



Overall Results for sample 1 : JRIDV001-A

Number of peaks found: 27 Corr. Area 1: 1,439.2
 Noise: 0.2

Peak table for sample 1 : JRIDV001-A

Peak	Aligned Migration Time [s]	Size [bp]	Conc. [pg/μl]	Molarity [pmol/l]	Observations
1	43.00	35	125.00	5,411.3	Lower Marker
2	67.46	289	556,556.25	2,915,746.8	
3	68.34	299	152,375.06	771,965.9	
4	70.64	327	335,871.81	1,554,228.8	
5	71.64	340	192,068.94	856,707.4	
6	74.22	372	180,969.69	737,945.6	
7	74.70	377	107,745.08	432,504.9	
8	75.53	388	213,485.66	834,200.9	
9	76.85	406	139,158.13	519,872.1	
10	79.51	452	145,822.03	488,718.7	
11	80.90	476	119,190.71	379,089.9	
12	81.62	489	109,536.75	339,480.3	
13	82.85	513	136,730.09	404,131.8	
14	84.16	540	128,406.48	360,003.3	
15	85.84	576	133,019.02	350,015.7	
16	86.67	594	135,054.86	344,778.2	
17	87.51	616	106,603.13	262,131.2	
18	89.18	667	91,227.27	207,139.5	
19	89.61	681	193,102.59	429,832.9	
20	91.09	761	69,789.15	138,903.5	
21	91.64	802	105,069.15	198,536.2	
22	92.95	898	60,095.79	101,450.1	
23	93.59	944	81,534.86	130,877.5	
24	94.43	1,010	108,794.88	163,234.1	
25	95.90	1,230	140,861.02	173,578.0	

Assay Class: High Sensitivity DNA Assay
 Data Path: C:\...ents and Settings\Bioanalyzer\2014-03-13\2014-03-13_002.xad

Created: 3/13/2014 4:25:08 PM
 Modified: 3/13/2014 5:14:11 PM

Electropherogram Summary Continued ...

... Peak table for sample 1 : JRIDV001-A

Peak	Aligned Migration Time [s]	Size [bp]	Conc. [pg/μl]	Molarity [pmol/l]	Observations
26	99.00	1,693	15,243.56	13,644.1	
27	99.80	1,812	12,636.58	10,569.1	
28	101.07	2,003	5,761.09	4,357.5	
29	113.00	10,380	75.00	10.9	Upper Marker

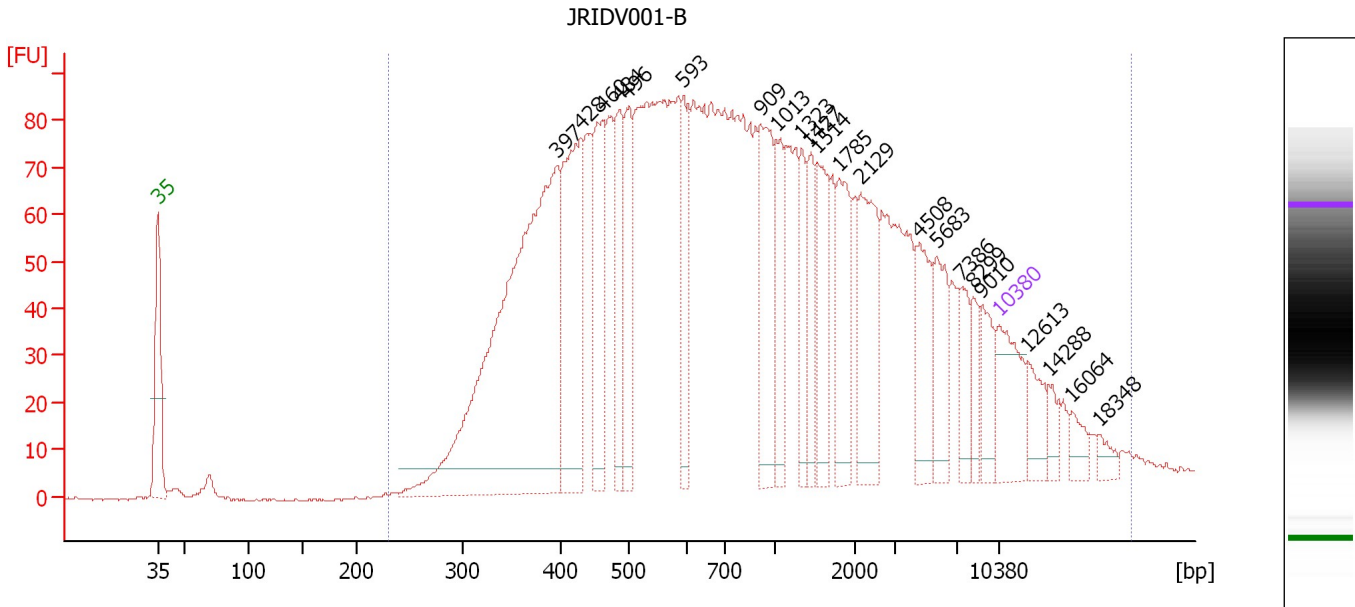
Region table for sample 1 : JRIDV001-A

From [bp]	To [bp]	Average Size [bp]	Molarity [pmol/l]	Conc. [pg/μl]	Co Corr. for Area	% of Total	Size distribution in CV [%]
247	1,838	491	10,964,206.0	3,092,408.50	1,439.2	100	33.7

Assay Class: High Sensitivity DNA Assay
 Data Path: C:\...ents and Settings\Bioanalyzer\2014-03-13\2014-03-13_002.xad

Created: 3/13/2014 4:25:08 PM
 Modified: 3/13/2014 5:14:11 PM

Electropherogram Summary Continued ...



Overall Results for sample 2 : JRIDV001-B

Number of peaks found: 22 Corr. Area 1: 2,851.3
 Noise: 0.3

Peak table for sample 2 : JRIDV001-B

Peak	Aligned Migration Time [s]	Size [bp]	Conc. [pg/μl]	Molarity [pmol/l]	Observations
1	43.00	35	125.00	5,411.3	Lower Marker
2	76.27	397	780.25	2,979.4	
3	78.13	428	268.23	949.5	
4	79.95	460	157.23	518.2	
5	81.33	484	103.48	324.0	
6	82.03	496	110.87	338.7	
7	86.66	593	91.85	234.5	
8	93.11	909	150.42	250.7	
9	94.45	1,013	69.04	103.3	
10	96.53	1,323	62.57	71.6	
11	97.22	1,427	60.64	64.4	
12	97.81	1,514	89.05	89.1	
13	99.62	1,785	99.95	84.8	
14	101.48	2,129	126.55	90.1	
15	106.28	4,508	80.42	27.0	
16	107.78	5,683	69.68	18.6	
17	109.85	7,386	44.30	9.1	
18	110.81	8,299	30.17	5.5	
19	111.56	9,010	44.67	7.5	
20	113.00	10,380	75.00	10.9	Upper Marker
21	115.35	12,613	0.00	0.0	
22	117.11	14,288	0.00	0.0	
23	118.97	16,064	0.00	0.0	
24	121.37	18,348	0.00	0.0	

Assay Class: High Sensitivity DNA Assay
Data Path: C:\...ents and Settings\Bioanalyzer\2014-03-13\2014-03-13_002.xad

Created: 3/13/2014 4:25:08 PM
Modified: 3/13/2014 5:14:11 PM

Electropherogram Summary Continued ...

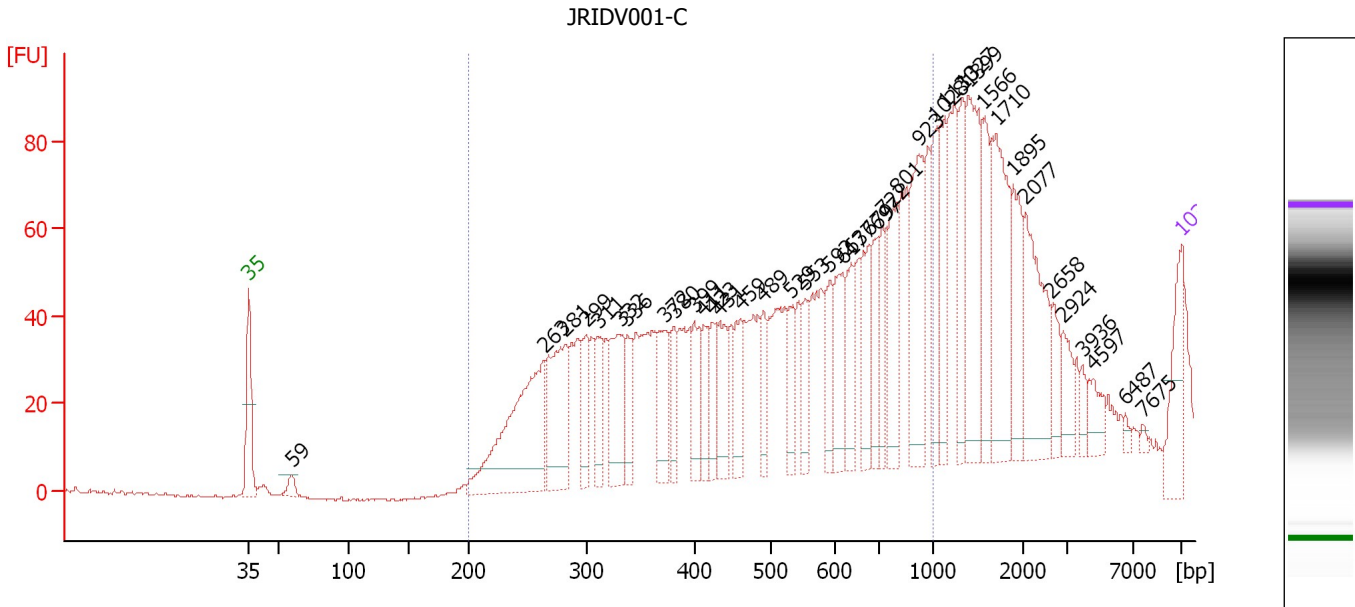
... Region table for sample 2 : JRIDV001-B

From [bp]	To [bp]	Average Size [bp]	Molarity [pmol/l]	Conc. [pg/μl]	Co Corr. lor Area	% of Total	Size distribution in CV [%]
229	20,881	2,289	10,528.0	4,377.99	 2,851.3	100	100.0

Assay Class: High Sensitivity DNA Assay
 Data Path: C:\...ents and Settings\Bioanalyzer\2014-03-13\2014-03-13_002.xad

Created: 3/13/2014 4:25:08 PM
 Modified: 3/13/2014 5:14:11 PM

Electropherogram Summary Continued ...



Overall Results for sample 3 : JRIDV001-C

Number of peaks found: 39 Corr. Area 1: 909.3
 Noise: 0.3

Peak table for sample 3 : JRIDV001-C


Peak	Aligned Migration Time [s]	Size [bp]	Conc. [pg/μl]	Molarity [pmol/l]	Observations
1	43.00	35	125.00	5,411.3	Lower Marker
2	46.20	59	23.76	611.0	
3	65.13	263	392.71	2,262.5	
4	66.73	281	217.57	1,173.0	
5	68.29	299	79.24	402.1	
6	69.30	311	81.48	397.2	
7	70.98	332	140.41	641.7	
8	71.38	336	61.75	278.1	
9	74.22	372	102.84	419.4	
10	74.90	380	57.43	229.0	
11	76.42	399	76.73	291.6	
12	77.14	411	54.68	201.7	
13	77.82	423	59.29	212.6	
14	78.30	431	86.96	305.8	
15	79.90	459	73.64	243.2	
16	81.62	489	57.87	179.3	
17	83.62	529	56.91	163.0	
18	84.74	553	52.91	145.1	
19	86.58	592	66.06	169.2	
20	87.55	617	98.48	241.7	
21	88.19	637	75.57	179.7	
22	89.55	679	86.82	193.8	
23	90.15	697	70.71	153.7	
24	90.55	722	72.59	152.3	
25	91.63	801	116.58	220.6	

Assay Class: High Sensitivity DNA Assay
 Data Path: C:\...ents and Settings\Bioanalyzer\2014-03-13\2014-03-13_002.xad


Created: 3/13/2014 4:25:08 PM
 Modified: 3/13/2014 5:14:11 PM

Electropherogram Summary Continued ...

... Peak table for sample 3 : JRIDV001-C

Peak	Aligned Migration Time [s]	Size [bp]	Conc. [pg/μl]	Molarity [pmol/l]	Observations
26	93.31	923	173.94	285.4	
27	94.55	1,028	85.43	125.9	
28	95.23	1,130	92.57	124.1	
29	96.55	1,327	93.84	107.1	
30	97.03	1,399	182.29	197.5	
31	98.15	1,566	88.82	85.9	
32	99.11	1,710	185.76	164.6	
33	100.35	1,895	93.47	74.7	
34	101.31	2,077	150.25	109.6	
35	103.23	2,658	42.14	24.0	
36	104.11	2,924	40.28	20.9	
37	105.56	3,936	16.04	6.2	
38	106.40	4,597	32.06	10.6	
39	108.80	6,487	6.12	1.4	
40	110.16	7,675	4.77	0.9	
41	 113.00	10,380	75.00	10.9	Upper Marker

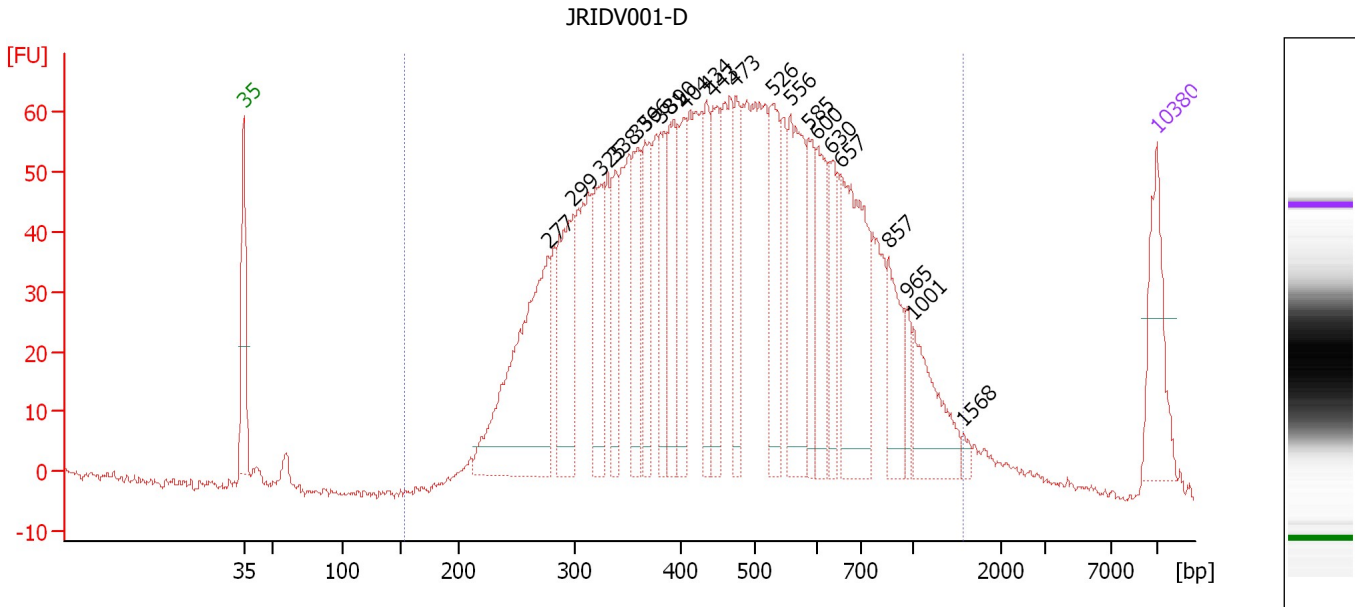
Region table for sample 3 : JRIDV001-C

From [bp]	To [bp]	Average Size [bp]	Molarity [pmol/l]	Conc. [pg/μl]	Co Corr. for Area	% of Total	Size distribution in CV [%]
200	1,000	552	6,962.7	2,002.70	 909.3	67	39.3

Assay Class: High Sensitivity DNA Assay
 Data Path: C:\...ents and Settings\Bioanalyzer\2014-03-13\2014-03-13_002.xad

Created: 3/13/2014 4:25:08 PM
 Modified: 3/13/2014 5:14:11 PM

Electropherogram Summary Continued ...



Overall Results for sample 4 : JRIDV001-D

Number of peaks found: 22 Corr. Area 1: 2,172.1
 Noise: 0.6

Peak table for sample 4 : JRIDV001-D


Peak	Aligned Migration Time [s]	Size [bp]	Conc. [pg/μl]	Molarity [pmol/l]	Observations
1	43.00	35	125.00	5,411.3	Lower Marker
2	66.42	277	350.95	1,916.6	
3	68.29	299	179.95	913.1	
4	70.42	325	117.11	546.5	
5	71.48	338	75.58	339.0	
6	73.20	359	105.09	443.6	
7	73.77	366	83.31	344.9	
8	74.96	381	88.72	353.2	
9	75.73	390	105.94	411.4	
10	76.75	404	87.75	329.1	
11	78.47	434	77.62	271.1	
12	79.00	443	98.93	338.2	
13	80.72	473	71.32	228.4	
14	83.50	526	111.12	319.9	
15	84.89	556	159.23	434.2	
16	86.27	585	71.58	185.4	
17	86.97	600	87.36	220.7	
18	87.95	630	65.53	157.7	
19	88.85	657	190.70	439.6	
20	92.40	857	70.69	124.9	
21	93.88	965	24.22	38.0	
22	94.37	1,001	82.81	125.4	
23	98.17	1,568	7.21	7.0	
24	113.00	10,380	75.00	10.9	Upper Marker

Assay Class: High Sensitivity DNA Assay
Data Path: C:\...ents and Settings\Bioanalyzer\2014-03-13\2014-03-13_002.xad

Created: 3/13/2014 4:25:08 PM
Modified: 3/13/2014 5:14:11 PM

Electropherogram Summary Continued ...

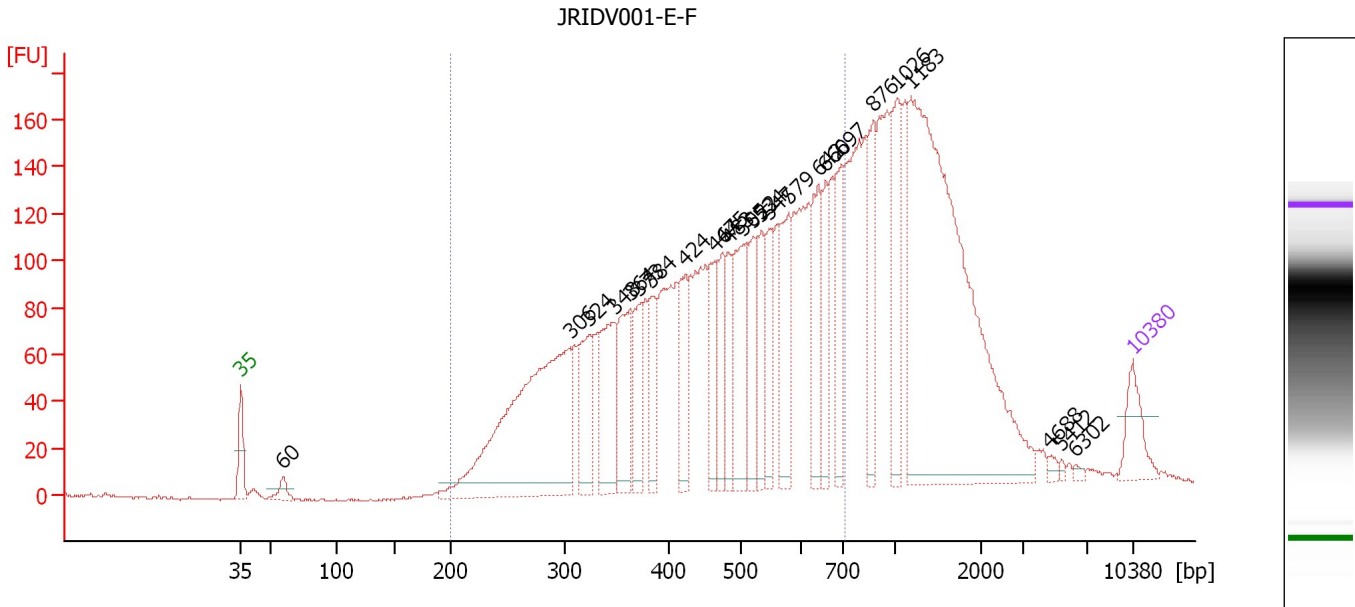
... Region table for sample 4 : JRIDV001-D

From [bp]	To [bp]	Average Size [bp]	Molarity [pmol/l]	Conc. [pg/μl]	Co Corr. lor Area	% of Total	Size distribution in CV [%]
153	1,559	501	13,611.7	3,674.01	 2,172.1	98	42.9

Assay Class: High Sensitivity DNA Assay
 Data Path: C:\...ents and Settings\Bioanalyzer\2014-03-13\2014-03-13_002.xad

Created: 3/13/2014 4:25:08 PM
 Modified: 3/13/2014 5:14:11 PM

Electropherogram Summary Continued ...



Overall Results for sample 5 : JRIDV001-E-F

Number of peaks found: 25 Corr. Area 1: 3,097.4
 Noise: 0.5


Peak table for sample 5 : JRIDV001-E-F

Peak	Aligned Migration Time [s]	Size [bp]	Conc. [pg/μl]	Molarity [pmol/l]	Observations
1	43.00	35	125.00	5,411.3	Lower Marker
2	46.31	60	42.20	1,067.3	
3	68.87	306	984.35	4,880.1	
4	70.34	324	201.01	940.9	
5	72.31	348	235.79	1,026.8	
6	73.60	364	226.01	940.9	
7	74.32	373	135.80	552.0	
8	75.24	384	138.48	546.3	
9	77.92	424	143.60	512.9	
10	80.22	464	157.06	512.4	
11	80.81	475	124.38	397.0	
12	81.31	483	115.79	362.9	
13	82.48	505	250.67	752.5	
14	83.28	522	152.67	443.5	
15	83.86	534	134.94	382.9	
16	84.49	547	134.32	371.9	
17	86.00	579	204.16	534.0	
18	88.34	642	198.13	467.8	
19	88.93	660	126.12	289.7	
20	90.14	697	153.64	334.1	
21	92.65	876	187.24	324.0	
22	94.54	1,026	215.29	317.8	
23	95.58	1,183	1,258.48	1,612.3	
24	106.51	4,688	10.92	3.5	
25	107.43	5,412	5.40	1.5	

Assay Class: High Sensitivity DNA Assay
Data Path: C:\...ents and Settings\Bioanalyzer\2014-03-13\2014-03-13_002.xad

Created: 3/13/2014 4:25:08 PM
Modified: 3/13/2014 5:14:11 PM

Electropherogram Summary Continued ...**... Peak table for sample 5 : JRIDV001-E-F**

Peak	Aligned Migration Time [s]	Size [bp]	Conc. [pg/ μ l]	Molarity [pmol/l]	Observations
26	108.56	6,302	6.40	1.5	
27	 113.00	10,380	75.00	10.9	Upper Marker

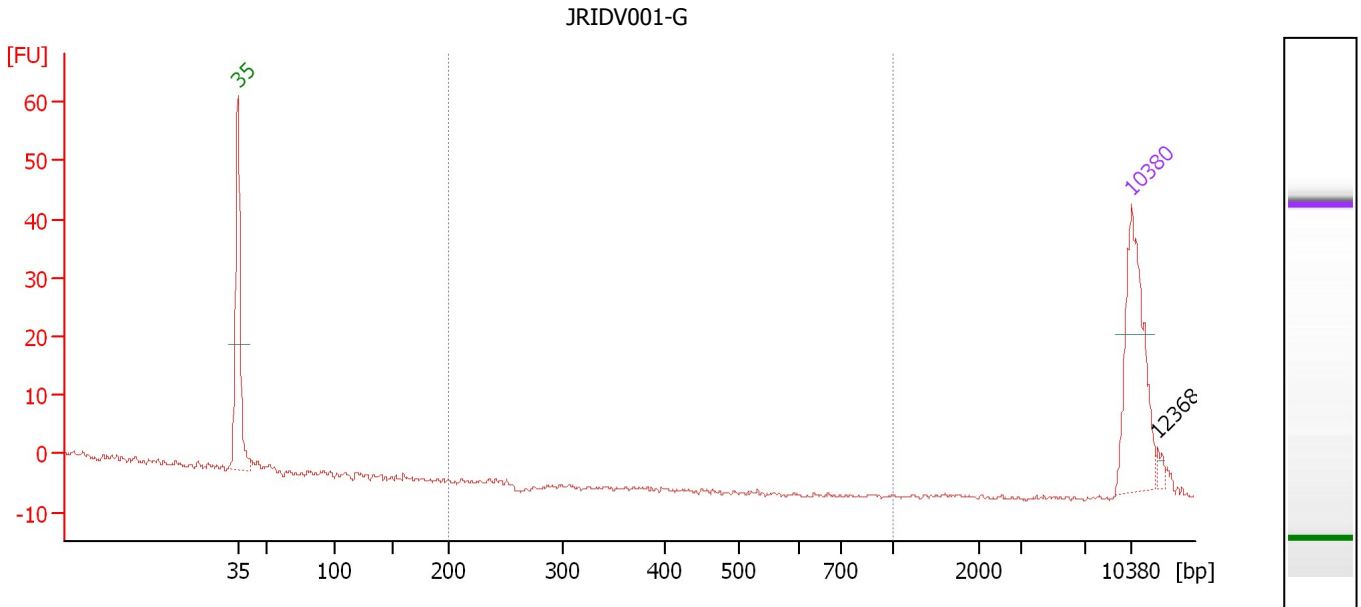
Region table for sample 5 : JRIDV001-E-F

From [bp]	To [bp]	Average Size [bp]	Molarity [pmol/l]	Conc. [pg/ μ l]	Co Corr. lor Area	% of Total	Size distribution in CV [%]
200	717	465	19,710.2	5,284.01	 3,097.4	64	28.1

Assay Class: High Sensitivity DNA Assay
 Data Path: C:\...ents and Settings\Bioanalyzer\2014-03-13\2014-03-13_002.xad

Created: 3/13/2014 4:25:08 PM
 Modified: 3/13/2014 5:14:11 PM

Electropherogram Summary Continued ...



Overall Results for sample 6 : JRIDV001-G

Number of peaks found: 1 Corr. Area 1: 0.0
 Noise: 0.3

Peak table for sample 6 : JRIDV001-G

Peak	Aligned Migration Time [s]	Size [bp]	Conc. [pg/μl]	Molarity [pmol/l]	Observations
1	43.00	35	125.00	5,411.3	Lower Marker
2	113.00	10,380	75.00	10.9	Upper Marker
3	115.09	12,368	0.00	0.0	

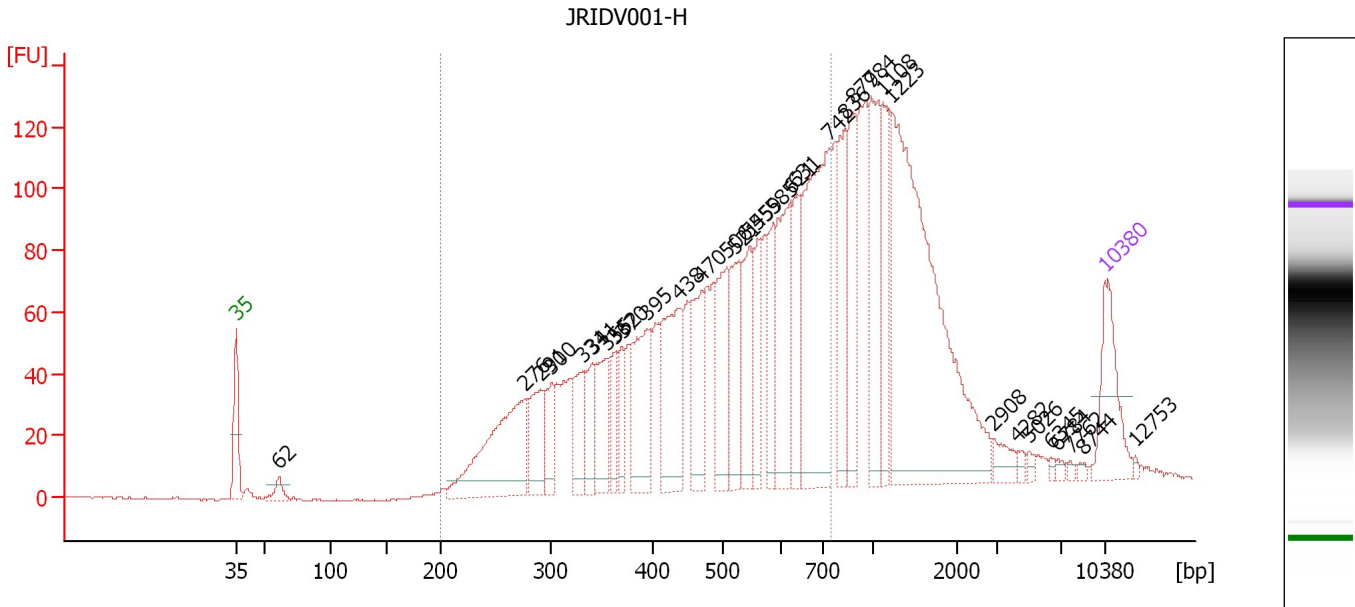
Region table for sample 6 : JRIDV001-G

From [bp]	To [bp]	Average Size [bp]	Molarity [pmol/l]	Conc. [pg/μl]	Co Corr. lor Area	% of Total	Size distribution in CV [%]
200	1,000	0	0.0	0.00	0.0	0	0.0

Assay Class: High Sensitivity DNA Assay
 Data Path: C:\...ents and Settings\Bioanalyzer\2014-03-13\2014-03-13_002.xad

Created: 3/13/2014 4:25:08 PM
 Modified: 3/13/2014 5:14:11 PM

Electropherogram Summary Continued ...



Overall Results for sample 7 : JRIDV001-H

Number of peaks found: 33 Corr. Area 1: 2,026.8
 Noise: 0.4

Peak table for sample 7 : JRIDV001-H

Peak	Aligned Migration Time [s]	Size [bp]	Conc. [pg/μl]	Molarity [pmol/l]	Observations
1	43.00	35	125.00	5,411.3	Lower Marker
2	46.48	62	23.41	576.2	
3	66.25	276	250.98	1,380.1	
4	67.58	291	89.84	468.5	
5	68.40	300	58.91	297.8	
6	70.93	331	79.81	365.3	
7	71.70	341	52.47	233.5	
8	72.91	355	86.38	368.3	
9	73.47	362	44.79	187.3	
10	74.11	370	45.41	185.8	
11	76.13	395	143.16	549.0	
12	78.71	438	163.41	565.2	
13	80.51	470	104.36	336.7	
14	82.53	506	116.46	348.8	
15	83.26	521	100.47	292.0	
16	84.38	545	105.83	294.2	
17	85.03	559	66.11	179.3	
18	86.27	585	71.96	186.3	
19	87.65	621	149.19	364.3	
20	87.99	631	89.16	214.1	
21	90.83	742	319.53	652.1	
22	92.12	836	105.95	191.9	
23	92.67	877	108.47	187.4	
24	94.14	984	141.82	218.5	
25	95.08	1,108	90.32	123.6	

Assay Class: High Sensitivity DNA Assay
 Data Path: C:\...ents and Settings\Bioanalyzer\2014-03-13\2014-03-13_002.xad

Created: 3/13/2014 4:25:08 PM
 Modified: 3/13/2014 5:14:11 PM

Electropherogram Summary Continued ...

... Peak table for sample 7 : JRIDV001-H

Peak	Aligned Migration Time [s]	Size [bp]	Conc. [pg/ μ l]	Molarity [pmol/l]	Observations
26	95.85	1,223	525.19	650.6	
27	104.06	2,908	20.26	10.6	
28	106.00	4,282	6.57	2.3	
29	106.94	5,026	5.50	1.7	
30	108.62	6,345	3.48	0.8	
31	109.18	6,784	4.31	1.0	
32	110.25	7,762	3.36	0.7	
33	111.28	8,744	3.39	0.6	
34	113.00	10,380	75.00	10.9	Upper Marker
35	115.49	12,753	0.00	0.0	

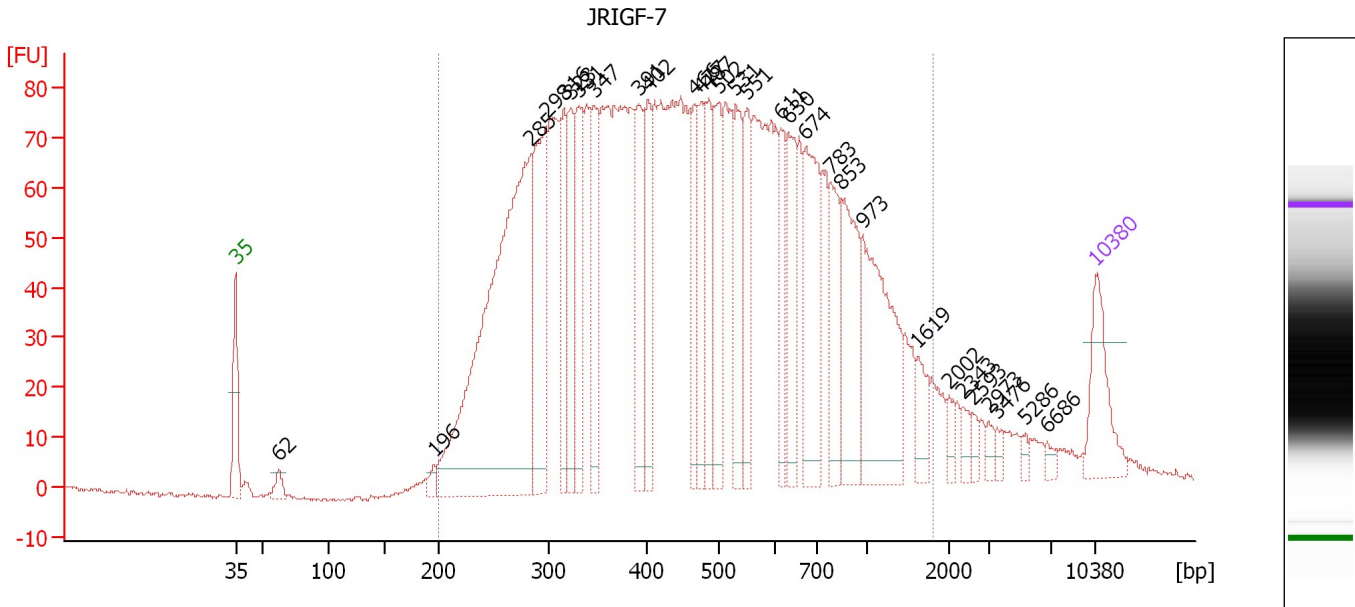
Region table for sample 7 : JRIDV001-H

From [bp]	To [bp]	Average Size [bp]	Molarity [pmol/l]	Conc. [pg/ μ l]	Co Corr. lor Area	% of Total	Size distribution in CV [%]
200	748	487	8,891.5	2,485.68	2,026.8	62	27.9

Assay Class: High Sensitivity DNA Assay
 Data Path: C:\...ents and Settings\Bioanalyzer\2014-03-13\2014-03-13_002.xad

Created: 3/13/2014 4:25:08 PM
 Modified: 3/13/2014 5:14:11 PM

Electropherogram Summary Continued ...



Overall Results for sample 8 : JRIGF-7

Number of peaks found: 30 Corr. Area 1: 3,035.0
 Noise: 0.5

Peak table for sample 8 : JRIGF-7


Peak	Aligned Migration Time [s]	Size [bp]	Conc. [pg/μl]	Molarity [pmol/l]	Observations
1	43.00	35	125.00	5,411.3	Lower Marker
2	46.52	62	23.20	568.1	
3	59.14	196	16.25	125.9	
4	67.04	285	891.30	4,746.8	
5	68.26	298	271.20	1,378.0	
6	69.73	316	134.18	642.9	
7	70.25	323	133.27	625.9	
8	70.95	331	131.38	601.0	
9	72.21	347	144.76	632.6	
10	75.81	391	146.82	568.8	
11	76.63	402	112.38	423.7	
12	80.32	466	98.35	319.6	
13	80.93	477	98.36	312.5	
14	81.49	487	105.20	327.5	
15	82.36	502	132.37	399.3	
16	83.71	531	117.38	335.1	
17	84.66	551	113.14	311.1	
18	87.35	611	82.55	204.5	
19	87.96	630	116.04	279.1	
20	89.39	674	191.77	431.2	
21	91.39	783	107.70	208.3	
22	92.34	853	147.60	262.2	
23	93.99	973	228.90	356.4	
24	98.51	1,619	37.33	34.9	
25	101.07	2,002	14.50	11.0	

Assay Class: High Sensitivity DNA Assay
 Data Path: C:\...ents and Settings\Bioanalyzer\2014-03-13\2014-03-13_002.xad


Created: 3/13/2014 4:25:08 PM
 Modified: 3/13/2014 5:14:11 PM

Electropherogram Summary Continued ...

... Peak table for sample 8 : JRIGF-7

Peak	Aligned Migration Time [s]	Size [bp]	Conc. [pg/μl]	Molarity [pmol/l]	Observations
26	102.19	2,343	14.94	9.7	
27	103.02	2,593	12.02	7.0	
28	104.28	2,973	11.36	5.8	
29	104.97	3,476	9.18	4.0	
30	107.27	5,286	7.82	2.2	
31	109.05	6,686	7.49	1.7	
32	 113.00	10,380	75.00	10.9	Upper Marker

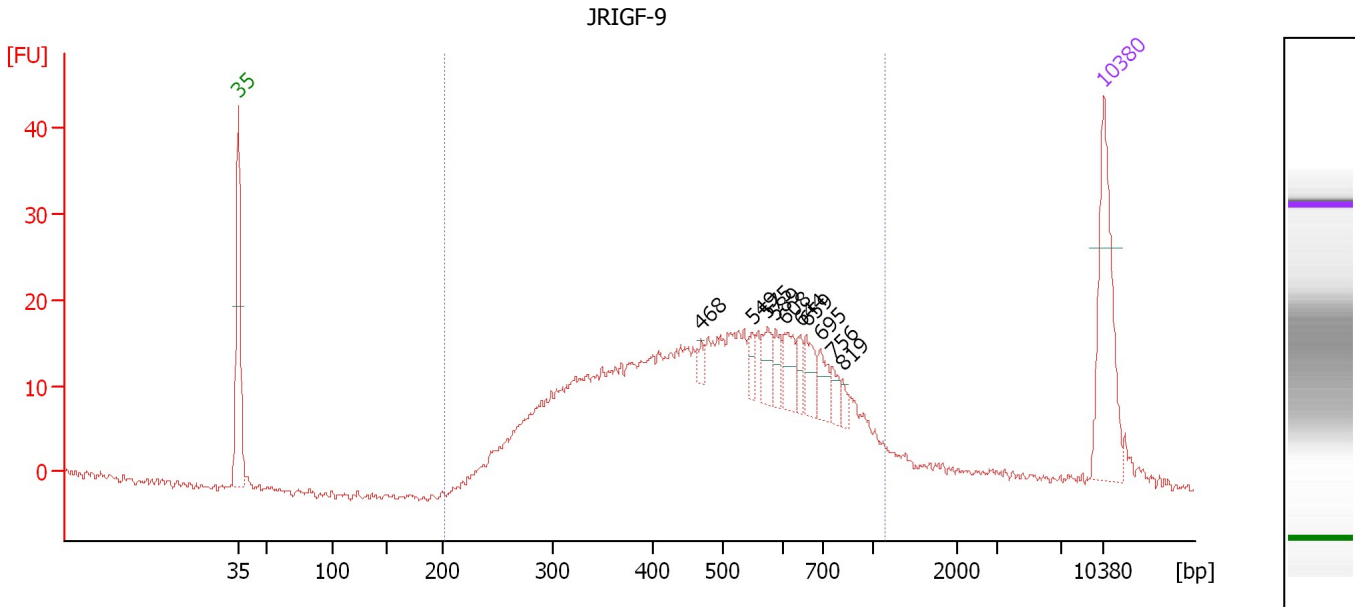
Region table for sample 8 : JRIGF-7

From [bp]	To [bp]	Average Size [bp]	Molarity [pmol/l]	Conc. [pg/μl]	Co Corr. lor Area	% of Total	Size distribution in CV [%]
200	1,803	532	20,885.6	5,552.36	 3,035.0	96	54.1

Assay Class: High Sensitivity DNA Assay
 Data Path: C:\...ents and Settings\Bioanalyzer\2014-03-13\2014-03-13_002.xad

Created: 3/13/2014 4:25:08 PM
 Modified: 3/13/2014 5:14:11 PM

Electropherogram Summary Continued ...



Overall Results for sample 9 : JRIGF-9

Number of peaks found: 10 Corr. Area 1: 511.8
 Noise: 0.4

Peak table for sample 9 : JRIGF-9

Peak	Aligned Migration Time [s]	Size [bp]	Conc. [pg/μl]	Molarity [pmol/l]	Observations
1	43.00	35	125.00	5,411.3	Lower Marker
2	80.41	468	6.57	21.3	
3	84.55	549	11.06	30.5	
4	85.80	575	18.56	48.9	
5	86.45	589	10.75	27.7	
6	87.22	608	21.13	52.7	
7	88.43	644	11.24	26.4	
8	88.91	659	20.34	46.8	
9	90.07	695	16.72	36.5	
10	91.02	756	9.71	19.4	
11	91.88	819	6.85	12.7	
12	113.00	10,380	75.00	10.9	Upper Marker

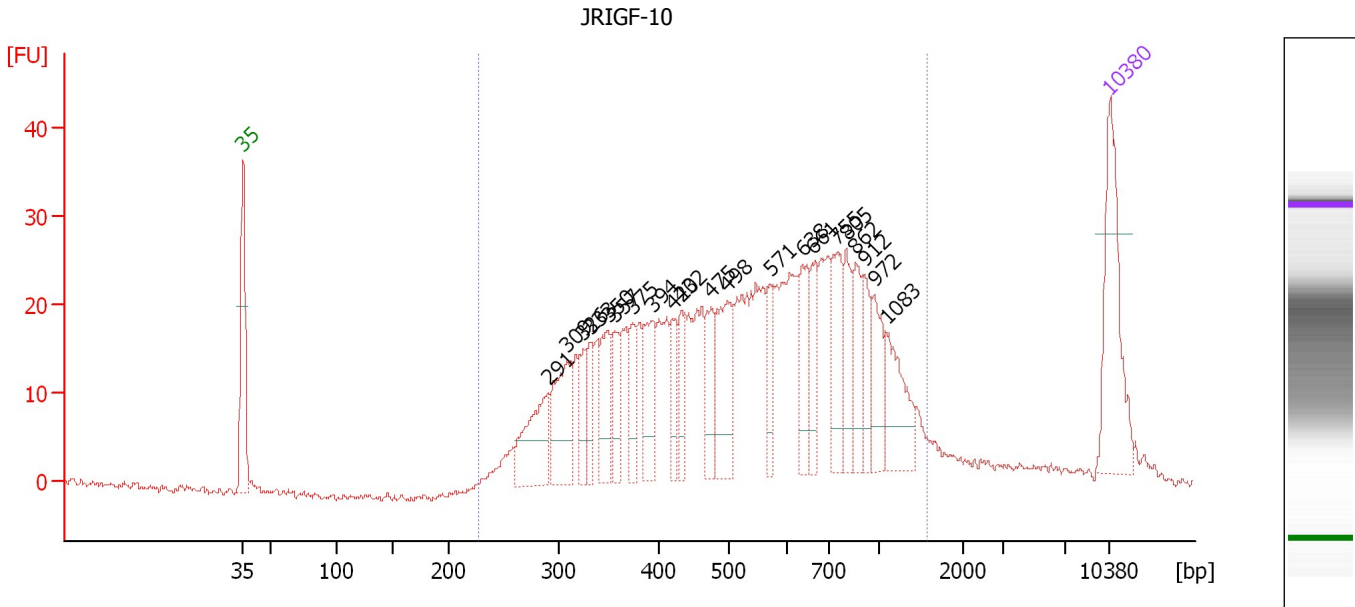
Region table for sample 9 : JRIGF-9

From [bp]	To [bp]	Average Size [bp]	Molarity [pmol/l]	Conc. [pg/μl]	Co Corr. for Area	% of Total	Size distribution in CV [%]
201	1,142	505	3,856.1	1,095.00	511.8	95	34.4

Assay Class: High Sensitivity DNA Assay
 Data Path: C:\...ents and Settings\Bioanalyzer\2014-03-13\2014-03-13_002.xad

Created: 3/13/2014 4:25:08 PM
 Modified: 3/13/2014 5:14:11 PM

Electropherogram Summary Continued ...



Overall Results for sample 10 : JRIGF-10

Number of peaks found: 21 Corr. Area 1: 730.8
 Noise: 0.4


Peak table for sample 10 : JRIGF-10

Peak	Aligned Migration Time [s]	Size [bp]	Conc. [pg/μl]	Molarity [pmol/l]	Observations
1	43.00	35	125.00	5,411.3	Lower Marker
2	67.62	291	75.19	391.4	
3	69.17	309	74.56	365.2	
4	70.51	326	26.84	124.8	
5	71.07	333	27.92	127.2	
6	72.49	350	46.04	199.2	
7	73.05	357	30.61	129.9	
8	74.47	375	28.45	115.1	
9	76.02	394	48.73	187.5	
10	77.66	420	29.06	104.9	
11	78.39	432	29.76	104.3	
12	80.80	475	39.52	126.2	
13	82.13	498	73.32	223.1	
14	85.62	571	29.15	77.3	
15	88.20	638	45.68	108.6	
16	88.98	661	33.20	76.1	
17	91.00	755	48.95	98.2	
18	91.69	805	35.58	66.9	
19	92.46	862	35.23	61.9	
20	93.15	912	29.99	49.8	
21	93.97	972	38.71	60.4	
22	94.92	1,083	48.57	67.9	
23	113.00	10,380	75.00	10.9	Upper Marker

Assay Class: High Sensitivity DNA Assay
Data Path: C:\...ents and Settings\Bioanalyzer\2014-03-13\2014-03-13_002.xad

Created: 3/13/2014 4:25:08 PM
Modified: 3/13/2014 5:14:11 PM

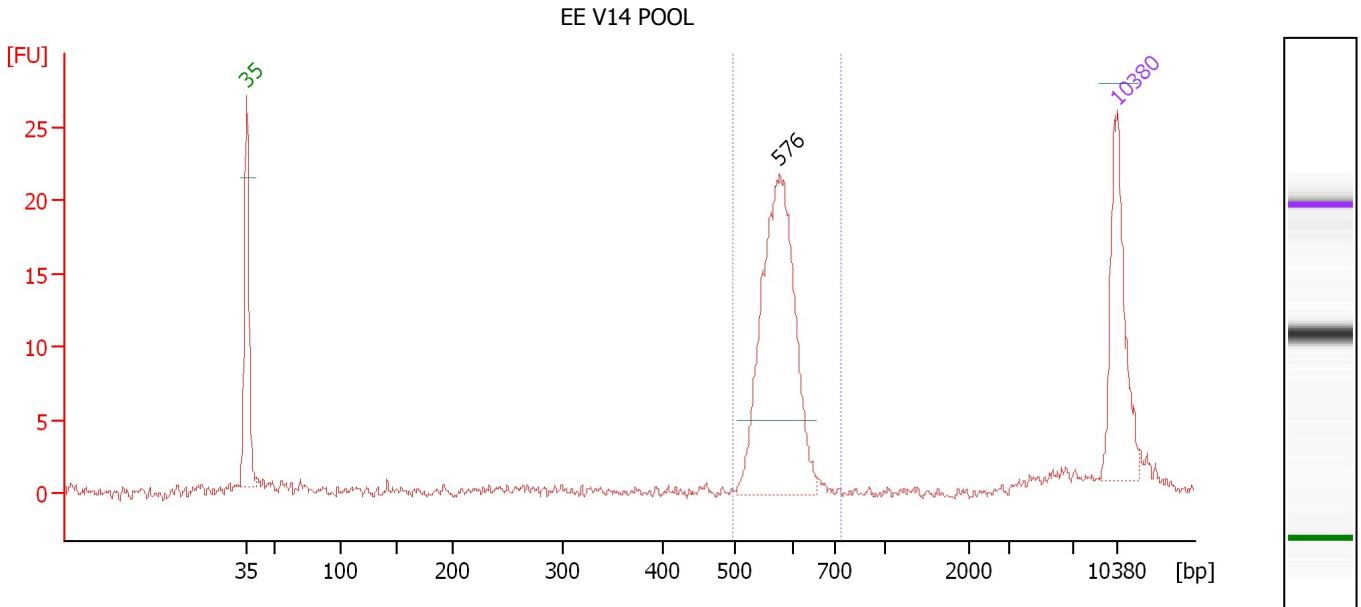
Electropherogram Summary Continued ...**... Region table for sample 10 : JRIGF-10**

From [bp]	To [bp]	Average Size [bp]	Molarity [pmol/l]	Conc. [pg/μl]	Co Corr. lor Area	% of Total	Size distribution in CV [%]
229	1,586	588	4,739.0	1,466.16	 730.8	96	44.2

Assay Class: High Sensitivity DNA Assay
 Data Path: C:\...ents and Settings\Bioanalyzer\2014-03-13\2014-03-13_002.xad

Created: 3/13/2014 4:25:08 PM
 Modified: 3/13/2014 5:14:11 PM

Electropherogram Summary Continued ...



Overall Results for sample 11 : EE V14 POOL

Number of peaks found: 1 Corr. Area 1: 80.2
 Noise: 0.3

Peak table for sample 11 : EE V14 POOL

Peak	Aligned Migration Time [s]	Size [bp]	Conc. [pg/μl]	Molarity [pmol/l]	Observations
1	43.00	35	125.00	5,411.3	Lower Marker
2	85.85	576	273.38	719.0	
3	113.00	10,380	75.00	10.9	Upper Marker

Region table for sample 11 : EE V14 POOL

From [bp]	To [bp]	Average Size [bp]	Molarity [pmol/l]	Conc. [pg/μl]	Co Corr. lor Area	% of Total	Size distribution in CV [%]
499	735	575	711.0	269.39	80.2	82	4.8

Assay Class: High Sensitivity DNA Assay
Data Path: C:\...ents and Settings\Bioanalyzer\2014-03-13\2014-03-13_002.xad

Created: 3/13/2014 4:25:08 PM
Modified: 3/13/2014 5:14:11 PM

Gel Image

