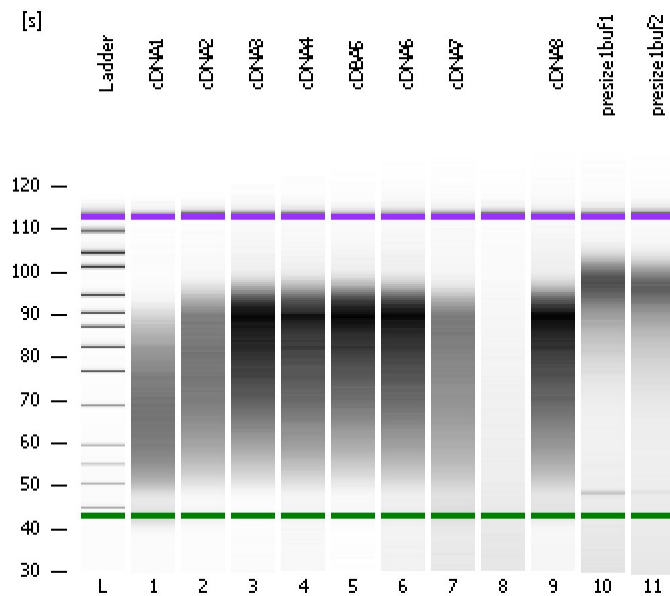


Assay Class: High Sensitivity DNA Assay  
Data Path: C:\...ents and Settings\Bioanalyzer\2014-03-17\2014-03-17\_004.xad

Created: 3/17/2014 3:39:20 PM  
Modified: 3/17/2014 4:41:50 PM

### Electrophoresis File Run Summary



#### Instrument Information:

Instrument Name: DE13701086      Firmware: C.01.069  
Serial#: DE13701086      Type: G2938B

#### Assay Information:

Assay Origin Path: C:\Program Files\Agilent\2100 bioanalyzer\2100 expert\assays\dsDNA\High Sensitivity DNA.xsy  
Assay Class: High Sensitivity DNA Assay  
Version: 1.03  
Assay Comments: Copyright © 2003-2010 Agilent Technologies

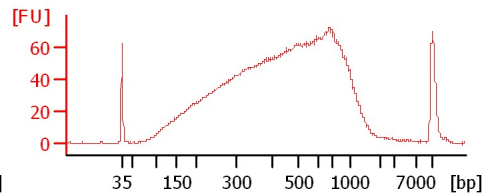
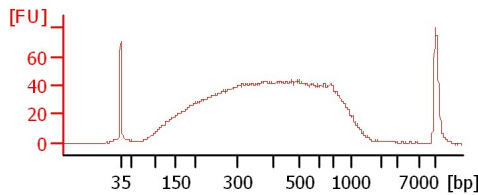
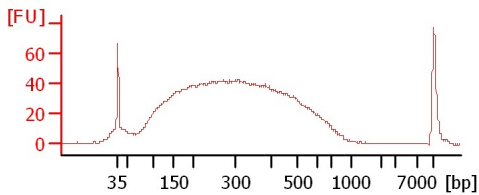
#### Chip Information:

Chip Lot #:   
Reagent Kit Lot #:   
Chip Comments:

cDNA1

cDNA2

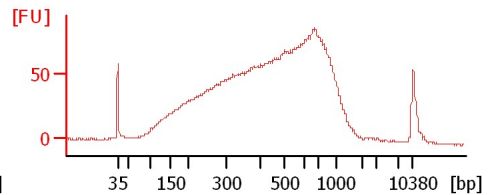
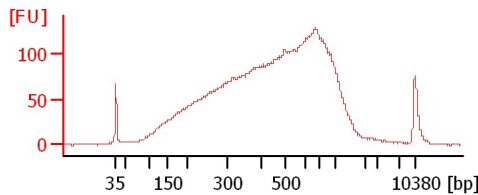
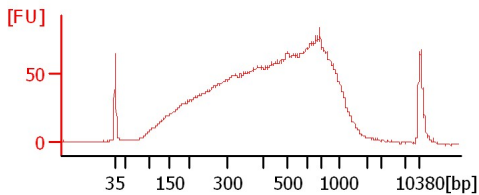
cDNA3



cDNA4

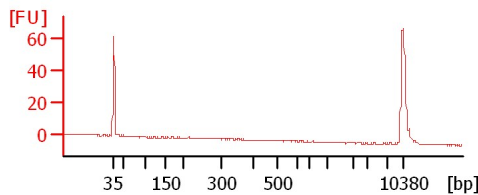
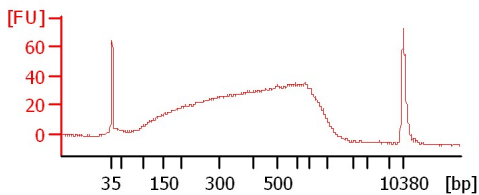
cDNA5

cDNA6



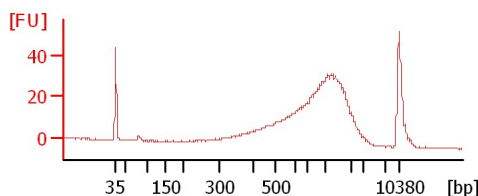
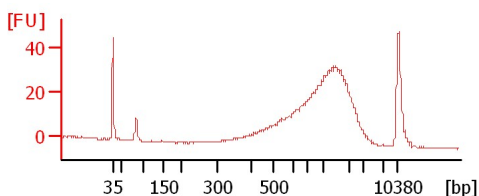
cDNA7

cDNA8



presize1buf1

presize1buf2



Assay Class: High Sensitivity DNA Assay  
 Data Path: C:\...ents and Settings\Bioanalyzer\2014-03-17\2014-03-17\_004.xad

Created: 3/17/2014 3:39:20 PM  
 Modified: 3/17/2014 4:41:50 PM

**Electrophoresis File Run Summary (Chip Summary)**

Sample Name	Sample Comment	Rest. Digest	Status	Observation	Result Label	Result Color
cDNA1		<input type="checkbox"/>	✓			
cDNA2		<input type="checkbox"/>	✓			
cDNA3		<input type="checkbox"/>	✓			
cDNA4		<input type="checkbox"/>	✓			
cDBA5		<input type="checkbox"/>	✓			
cDNA6		<input type="checkbox"/>	✓			
cDNA7		<input type="checkbox"/>	✓			
cDNA8		<input type="checkbox"/>	✓			
presize1buf1		<input type="checkbox"/>	✓			
presize1buf2		<input type="checkbox"/>	✓			
Ladder		<input type="checkbox"/>	✓			

**Chip Lot #**

**Reagent Kit Lot #**

**Chip Comments :**

Assay Class: High Sensitivity DNA Assay  
Data Path: C:\...ents and Settings\Bioanalyzer\2014-03-17\2014-03-17\_004.xad

Created: 3/17/2014 3:39:20 PM  
Modified: 3/17/2014 4:41:50 PM

**Electrophoresis Assay Details**

**General Analysis Settings**

Number of Available Sample and Ladder Wells (Max.) : 12  
Minimum Visible Range [s] : 32  
Maximum Visible Range [s] : 138  
Start Analysis Time Range [s] : 33  
End Analysis Time Range [s] : 137.5  
Ladder Concentration [pg/μl] : 1950  
Uses Standard Area for Ladder Fragments  
Lower Marker Concentration [pg/μl] : 125  
Upper Marker Concentration [pg/μl] : 75  
Used Upper Marker for Quantitation  
Standard Curve Fit is Point to Point  
Show Data Aligned to Lower and Upper Marker

**Integrator Settings**

Integration Start Time [s] : 33.05  
Integration End Time [s] : 137  
Slope Threshold : 0.8  
Height Threshold [FU] : 5  
Area Threshold : 0.1  
Width Threshold [s] : 0.6  
Baseline Plateau [s] : 0.5

**Filter Settings**

Filter Width [s] : 0.5  
Polynomial Order : 4

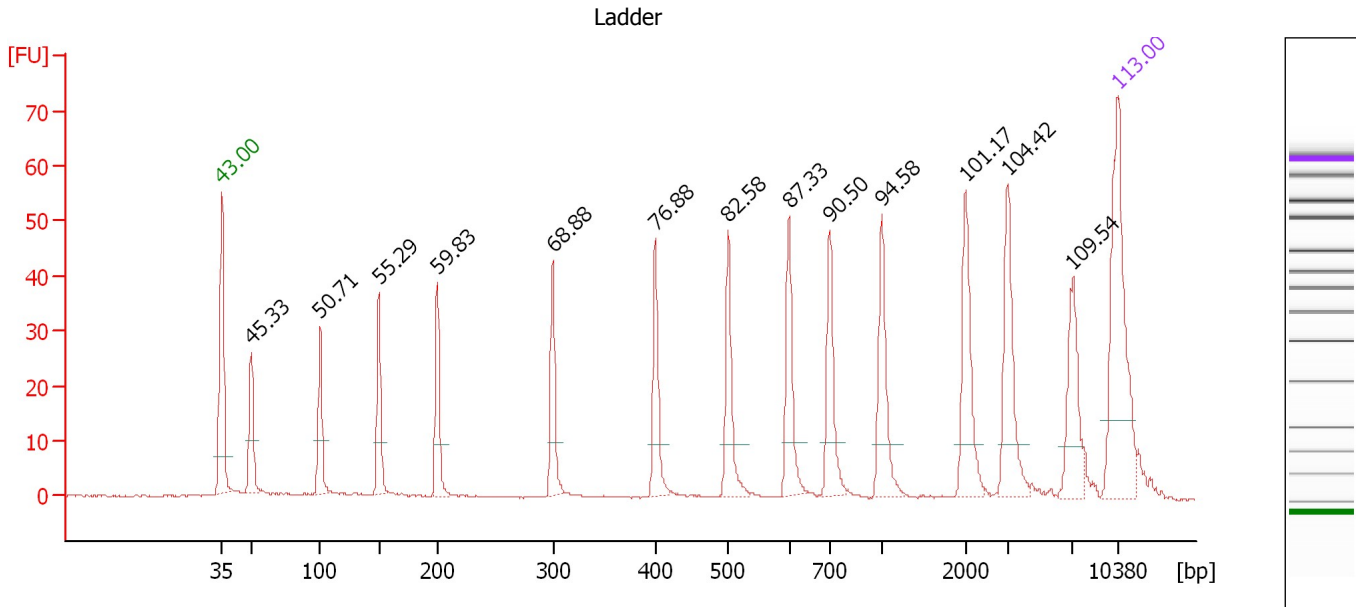
**Ladder**

Ladder Peak	Size	Area
1	35	160
2	50	210
3	100	208
4	150	221
5	200	242
6	300	270
7	400	305
8	500	306
9	600	336
10	700	321
11	1000	366
12	2000	413
13	3000	411
14	7000	400
15	10380	214

Assay Class: High Sensitivity DNA Assay  
 Data Path: C:\...ents and Settings\Bioanalyzer\2014-03-17\2014-03-17\_004.xad

Created: 3/17/2014 3:39:20 PM  
 Modified: 3/17/2014 4:41:50 PM

**Electropherogram Summary**



**Overall Results for Ladder**

Noise: 0.1

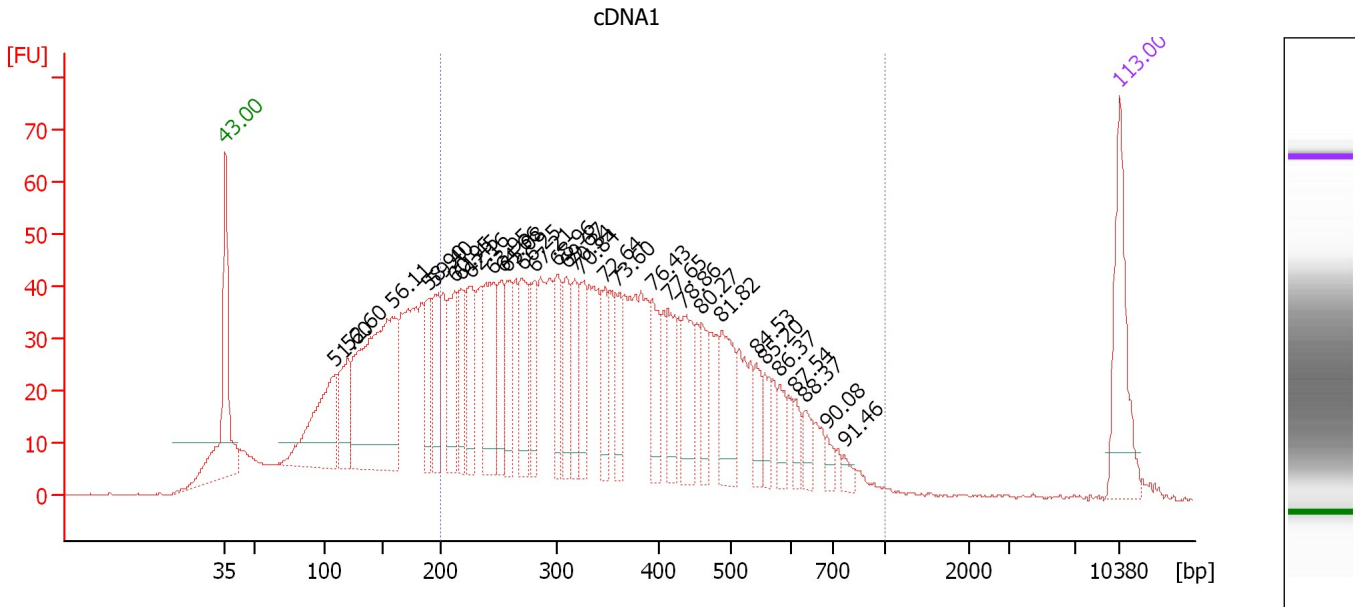
**Peak table for Ladder**

Peak	Aligned Migration Time [s]	Size [bp]	Conc. [pg/μl]	Molarity [pmol/l]	Observations
1	43.00	35	125.00	5,411.3	Lower Marker
2	45.33	50	150.00	4,545.5	Ladder Peak
3	50.71	100	150.00	2,272.7	Ladder Peak
4	55.29	150	150.00	1,515.2	Ladder Peak
5	59.83	200	150.00	1,136.4	Ladder Peak
6	68.88	300	150.00	757.6	Ladder Peak
7	76.88	400	150.00	568.2	Ladder Peak
8	82.58	500	150.00	454.5	Ladder Peak
9	87.33	600	150.00	378.8	Ladder Peak
10	90.50	700	150.00	324.7	Ladder Peak
11	94.58	1,000	150.00	227.3	Ladder Peak
12	101.17	2,000	150.00	113.6	Ladder Peak
13	104.42	3,000	150.00	75.8	Ladder Peak
14	109.54	7,000	150.00	32.5	Ladder Peak
15	113.00	10,380	75.00	10.9	Upper Marker

Assay Class: High Sensitivity DNA Assay  
 Data Path: C:\...ents and Settings\Bioanalyzer\2014-03-17\2014-03-17\_004.xad

Created: 3/17/2014 3:39:20 PM  
 Modified: 3/17/2014 4:41:50 PM

**Electropherogram Summary Continued ...**



**Overall Results for sample 1 : cDNA1**

Number of peaks found: 31                      Corr. Area 1: 1,533.9  
 Noise: 0.2

**Peak table for sample 1 : cDNA1**


Peak	Aligned Migration Time [s]	Size [bp]	Conc. [pg/μl]	Molarity [pmol/l]	Observations
1	43.00	35	125.00	5,411.3	Lower Marker
2	51.60	110	158.47	2,188.5	
3	52.60	121	82.61	1,037.4	
4	56.11	159	353.86	3,372.6	
5	58.90	190	59.78	477.3	
6	59.40	195	74.22	575.9	
7	60.95	212	84.12	600.3	
8	61.45	218	58.61	407.6	
9	62.16	226	71.52	480.0	
10	63.95	246	108.91	671.9	
11	64.66	253	64.79	387.4	
12	65.08	258	60.30	354.1	
13	66.25	271	71.40	399.3	
14	67.21	282	56.88	306.0	
15	68.96	301	55.69	280.2	
16	69.67	310	57.60	281.6	
17	70.34	318	52.48	249.8	
18	70.84	325	58.73	274.1	
19	72.64	347	43.90	191.7	
20	73.60	359	41.78	176.3	
21	76.43	394	58.79	225.8	
22	77.65	413	49.81	182.5	
23	78.86	435	62.99	219.5	
24	80.27	460	37.68	124.2	
25	81.82	487	68.65	213.8	

Assay Class: High Sensitivity DNA Assay  
 Data Path: C:\...ents and Settings\Bioanalyzer\2014-03-17\2014-03-17\_004.xad

Created: 3/17/2014 3:39:20 PM  
 Modified: 3/17/2014 4:41:50 PM

### Electropherogram Summary Continued ...

#### ... Peak table for sample 1 : cDNA1

Peak	Aligned Migration Time [s]	Size [bp]	Conc. [pg/ $\mu$ l]	Molarity [pmol/l]	Observations
26	84.53	541	25.88	72.5	
27	85.20	555	23.69	64.7	
28	86.37	580	24.02	62.8	
29	87.54	606	17.72	44.3	
30	88.37	633	18.73	44.9	
31	90.08	687	10.73	23.7	
32	91.46	771	8.50	16.7	
33	 113.00	10,380	75.00	10.9	Upper Marker

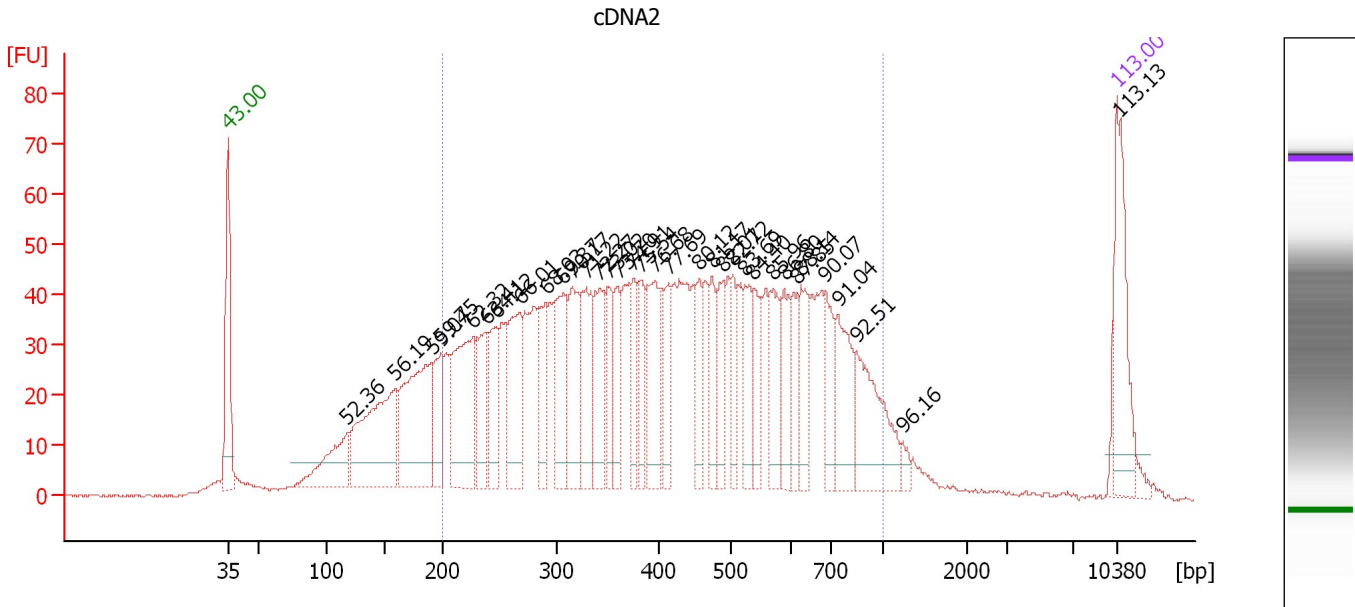
#### Region table for sample 1 : cDNA1

From [bp]	To [bp]	Average Size [bp]	Molarity [pmol/l]	Conc. [pg/ $\mu$ l]	Co Corr. lor Area	% of Total	Size distribution in CV [%]
200	1,000	376	11,311.4	2,396.75	 1,533.9	68	35.4

Assay Class: High Sensitivity DNA Assay  
 Data Path: C:\...ents and Settings\Bioanalyzer\2014-03-17\2014-03-17\_004.xad

Created: 3/17/2014 3:39:20 PM  
 Modified: 3/17/2014 4:41:50 PM

**Electropherogram Summary Continued ...**



**Overall Results for sample 2 : cDNA2**

Number of peaks found: 34                      Corr. Area 1: 1,811.1  
 Noise: 0.3

**Peak table for sample 2 : cDNA2**

Peak	Aligned Migration Time [s]	Size [bp]	Conc. [pg/μl]	Molarity [pmol/l]	Observations
1	43.00	35	125.00	5,411.3	Lower Marker
2	52.36	118	76.24	978.4	
3	56.19	160	172.69	1,636.9	
4	59.04	191	163.27	1,293.3	
5	59.75	199	54.34	413.4	
6	62.32	227	130.95	872.3	
7	63.41	240	60.48	382.5	
8	64.12	247	55.59	340.4	
9	66.01	268	88.06	497.2	
10	68.03	291	53.89	280.9	
11	69.37	306	83.20	411.7	
12	70.17	316	73.67	353.0	
13	71.22	329	74.47	342.7	
14	72.27	342	66.51	294.3	
15	73.02	352	38.82	167.1	
16	73.70	360	41.05	172.7	
17	74.91	375	38.23	154.2	
18	75.54	383	37.33	147.5	
19	76.68	398	77.06	293.7	
20	77.69	414	37.69	137.9	
21	80.12	457	37.00	122.7	
22	81.17	475	33.74	107.6	
23	82.01	490	35.88	111.0	
24	82.72	503	33.56	101.1	
25	83.69	523	38.69	112.0	

Assay Class: High Sensitivity DNA Assay  
 Data Path: C:\...ents and Settings\Bioanalyzer\2014-03-17\2014-03-17\_004.xad

Created: 3/17/2014 3:39:20 PM  
 Modified: 3/17/2014 4:41:50 PM

### Electropherogram Summary Continued ...

#### ... Peak table for sample 2 :

#### cDNA2

Peak	Aligned Migration Time [s]	Size [bp]	Conc. [pg/μl]	Molarity [pmol/l]	Observations
26	84.40	538	38.82	109.3	
27	85.96	571	47.86	127.0	
28	86.80	589	42.10	108.3	
29	87.85	616	27.03	66.5	
30	88.14	626	42.08	101.9	
31	90.07	687	35.46	78.3	
32	91.04	740	61.36	125.7	
33	92.51	848	79.64	142.4	
34	96.16	1,240	7.00	8.6	
35	113.00	10,380	75.00	10.9	Upper Marker
36	113.13	10,503	0.00	0.0	

#### Region table for sample 2 :

#### cDNA2

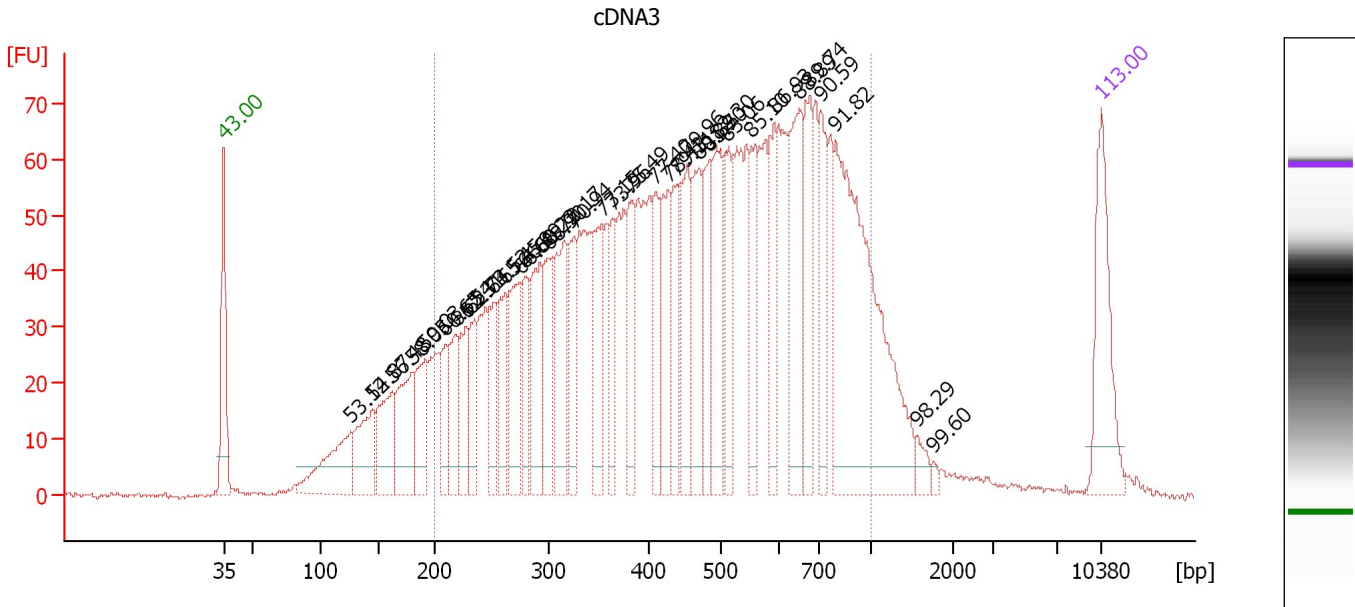
From [bp]	To [bp]	Average Size [bp]	Molarity [pmol/l]	Conc. [pg/μl]	Co Corr. for Area	% of Total	Size distribution in CV [%]
200	1,000	446	9,433.6	2,243.98	1,811.1	80	39.5



Assay Class: High Sensitivity DNA Assay  
 Data Path: C:\...ents and Settings\Bioanalyzer\2014-03-17\2014-03-17\_004.xad

Created: 3/17/2014 3:39:20 PM  
 Modified: 3/17/2014 4:41:50 PM

**Electropherogram Summary Continued ...**



**Overall Results for sample 3 : cDNA3**

Number of peaks found: 36                      Corr. Area 1: 2,325.9  
 Noise: 0.3

**Peak table for sample 3 : cDNA3**


Peak	Aligned Migration Time [s]	Size [bp]	Conc. [pg/μl]	Molarity [pmol/l]	Observations
1	43.00	35	125.00	5,411.3	Lower Marker
2	53.12	126	100.30	1,203.0	
3	54.87	145	79.54	829.1	
4	56.48	163	84.31	783.2	
5	58.05	180	89.22	749.2	
6	59.03	191	72.77	576.7	
7	60.65	209	40.85	296.2	
8	61.54	219	61.49	425.6	
9	62.31	227	59.75	398.2	
10	62.73	232	48.38	315.8	
11	64.52	252	58.00	349.0	
12	65.45	262	66.28	383.0	
13	66.60	275	93.90	517.6	
14	66.99	279	50.20	272.5	
15	68.22	293	89.29	462.1	
16	68.90	300	75.82	382.5	
17	70.17	316	104.04	498.4	
18	70.94	326	60.95	283.4	
19	73.15	353	83.47	357.8	
20	73.96	364	51.94	216.5	
21	75.49	383	68.73	272.1	
22	77.40	409	55.80	206.6	
23	78.43	427	75.02	266.1	
24	79.11	439	59.91	206.7	
25	79.96	454	81.81	273.0	

Assay Class: High Sensitivity DNA Assay  
 Data Path: C:\...ents and Settings\Bioanalyzer\2014-03-17\2014-03-17\_004.xad


Created: 3/17/2014 3:39:20 PM  
 Modified: 3/17/2014 4:41:50 PM

**Electropherogram Summary Continued ...**

**... Peak table for sample 3 : cDNA3**

Peak	Aligned Migration Time [s]	Size [bp]	Conc. [pg/μl]	Molarity [pmol/l]	Observations
26	80.89	470	81.88	263.8	
27	81.70	485	70.47	220.4	
28	82.30	495	89.35	273.5	
29	83.06	510	71.00	210.9	
30	85.10	553	59.36	162.6	
31	86.93	592	58.55	150.0	
32	88.89	649	104.85	244.8	
33	89.74	676	79.62	178.5	
34	90.59	706	63.41	136.0	
35	91.82	797	322.32	612.7	
36	98.29	1,562	10.62	10.3	
37	99.60	1,763	3.62	3.1	
38	 113.00	10,380	75.00	10.9	Upper Marker

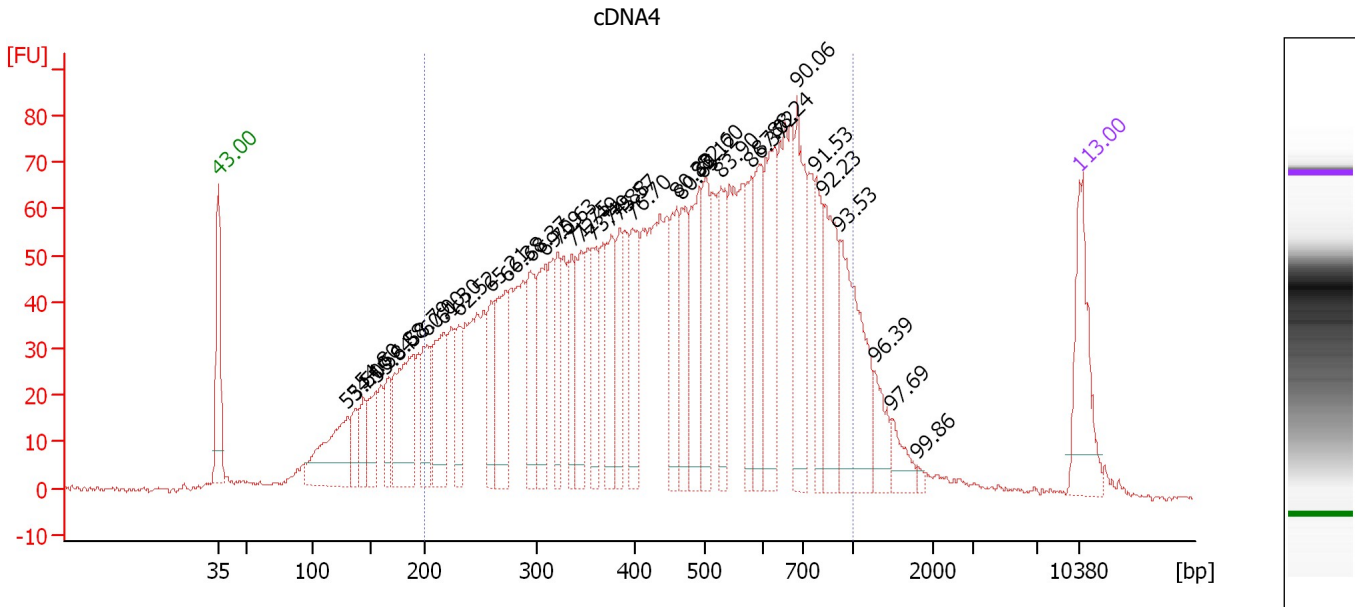
**Region table for sample 3 : cDNA3**

From [bp]	To [bp]	Average Size [bp]	Molarity [pmol/l]	Conc. [pg/μl]	Co Corr. lor Area	% of Total	Size distribution in CV [%]
200	1,000	487	12,094.5	3,106.94	 2,325.9	85	38.7

Assay Class: High Sensitivity DNA Assay  
 Data Path: C:\...ents and Settings\Bioanalyzer\2014-03-17\2014-03-17\_004.xad

Created: 3/17/2014 3:39:20 PM  
 Modified: 3/17/2014 4:41:50 PM

**Electropherogram Summary Continued ...**



**Overall Results for sample 4 : cDNA4**

Number of peaks found: 35                      Corr. Area 1: 2,529.6  
 Noise: 0.6

**Peak table for sample 4 : cDNA4**

Peak	Aligned Migration Time [s]	Size [bp]	Conc. [pg/μl]	Molarity [pmol/l]	Observations
1	43.00	35	125.00	5,411.3	Lower Marker
2	53.50	130	131.57	1,528.6	
3	54.10	137	32.67	361.2	
4	54.80	145	46.85	490.9	
5	55.84	156	54.75	531.8	
6	56.88	167	45.35	410.3	
7	58.79	188	152.24	1,223.8	
8	60.00	202	72.10	541.2	
9	61.30	216	109.00	763.7	
10	62.52	230	56.82	374.8	
11	65.21	259	60.04	350.7	
12	66.38	272	113.22	629.9	
13	68.37	294	82.46	424.3	
14	69.59	309	99.64	488.7	
15	70.63	322	60.56	285.1	
16	71.75	336	62.53	282.0	
17	72.49	345	71.19	312.5	
18	73.49	358	62.26	263.7	
19	74.88	375	97.06	392.1	
20	75.57	384	62.48	246.7	
21	76.70	398	82.70	315.0	
22	80.30	460	83.96	276.6	
23	80.65	466	71.42	232.2	
24	82.12	492	103.75	319.6	
25	82.60	500	80.56	244.0	

Assay Class: High Sensitivity DNA Assay  
 Data Path: C:\...ents and Settings\Bioanalyzer\2014-03-17\2014-03-17\_004.xad

Created: 3/17/2014 3:39:20 PM  
 Modified: 3/17/2014 4:41:50 PM

### Electropherogram Summary Continued ...

#### ... Peak table for sample 4 : cDNA4

Peak	Aligned Migration Time [s]	Size [bp]	Conc. [pg/μl]	Molarity [pmol/l]	Observations
26	83.90	528	71.34	204.8	
27	86.37	580	59.60	155.8	
28	87.02	593	82.22	209.9	
29	88.24	628	116.98	282.0	
30	90.06	686	119.92	264.9	
31	91.53	776	61.84	120.8	
32	92.23	827	101.95	186.8	
33	93.53	922	143.99	236.5	
34	96.39	1,274	33.20	39.5	
35	97.69	1,472	24.25	25.0	
36	99.86	1,801	3.63	3.0	
37	113.00	10,380	75.00	10.9	Upper Marker

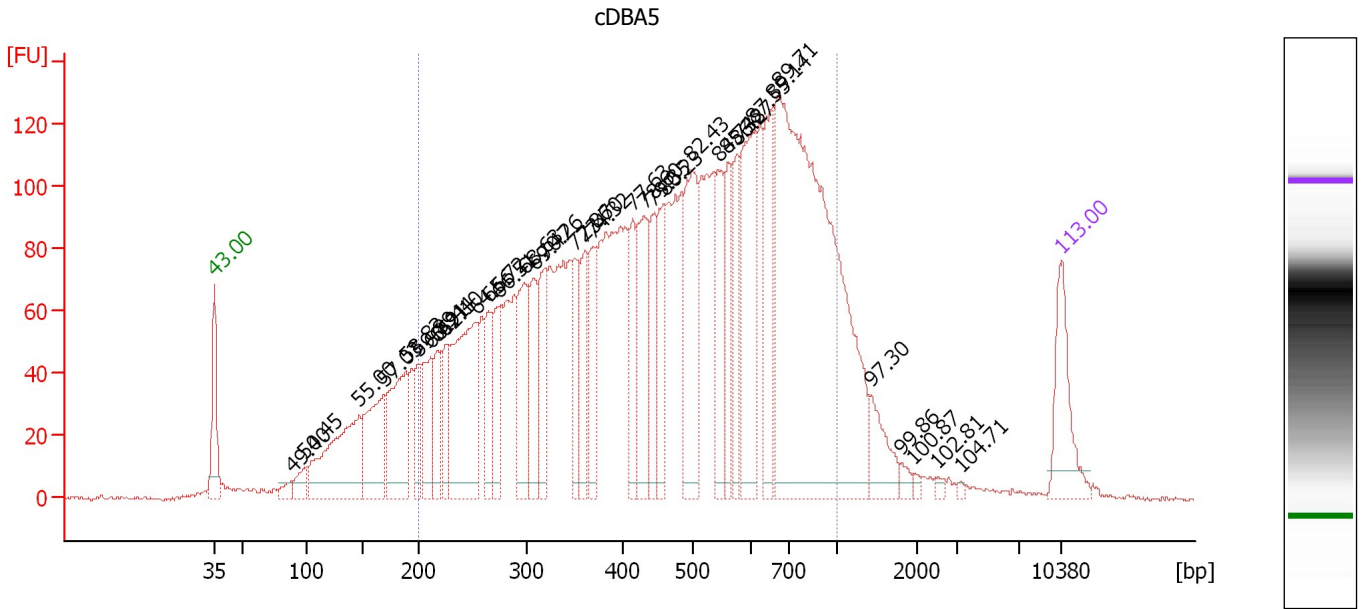
#### Region table for sample 4 : cDNA4

From [bp]	To [bp]	Average Size [bp]	Molarity [pmol/l]	Conc. [pg/μl]	Co Corr. lor Area	% of Total	Size distribution in CV [%]
200	1,000	484	13,689.9	3,477.08	2,529.6	82	39.1

Assay Class: High Sensitivity DNA Assay  
 Data Path: C:\...ents and Settings\Bioanalyzer\2014-03-17\2014-03-17\_004.xad

Created: 3/17/2014 3:39:20 PM  
 Modified: 3/17/2014 4:41:50 PM

**Electropherogram Summary Continued ...**



**Overall Results for sample 5 : cDBA5**

Number of peaks found: 34                      Corr. Area 1: 3,903.0  
 Noise: 0.7

**Peak table for sample 5 : cDBA5**

Peak	Aligned Migration Time [s]	Size [bp]	Conc. [pg/μl]	Molarity [pmol/l]	Observations
1	43.00	35	125.00	5,411.3	Lower Marker
2	49.40	88	18.81	324.6	
3	50.45	98	32.11	498.3	
4	55.00	147	247.58	2,555.5	
5	57.03	169	159.37	1,428.0	
6	58.83	189	178.07	1,427.4	
7	59.89	201	60.70	458.3	
8	60.91	212	103.39	739.3	
9	61.44	218	73.58	512.0	
10	62.10	225	65.15	438.6	
11	64.66	253	271.81	1,625.5	
12	65.72	265	77.11	440.8	
13	66.51	274	88.87	491.7	
14	68.63	297	116.09	591.7	
15	69.47	307	98.90	487.5	
16	70.26	317	106.31	507.6	
17	72.86	350	75.28	326.0	
18	73.70	360	85.94	361.4	
19	74.32	368	92.95	382.7	
20	77.63	413	75.96	278.6	
21	78.60	430	140.98	496.6	
22	79.35	443	76.82	262.6	
23	80.23	459	101.62	335.6	
24	82.43	497	185.79	566.0	
25	84.73	545	103.49	287.7	

Assay Class: High Sensitivity DNA Assay  
 Data Path: C:\...ents and Settings\Bioanalyzer\2014-03-17\2014-03-17\_004.xad

Created: 3/17/2014 3:39:20 PM  
 Modified: 3/17/2014 4:41:50 PM

**Electropherogram Summary Continued ...**

**... Peak table for sample 5 : cDBA5**

Peak	Aligned Migration Time [s]	Size [bp]	Conc. [pg/μl]	Molarity [pmol/l]	Observations
26	85.48	561	78.60	212.3	
27	86.27	578	84.55	221.8	
28	87.55	607	191.18	477.4	
29	89.14	657	125.26	288.9	
30	89.71	675	871.27	1,955.5	
31	97.30	1,412	51.28	55.0	
32	99.86	1,801	8.69	7.3	
33	100.87	1,955	3.93	3.0	
34	102.81	2,506	5.11	3.1	
35	104.71	3,227	2.30	1.1	
36	113.00	10,380	75.00	10.9	Upper Marker

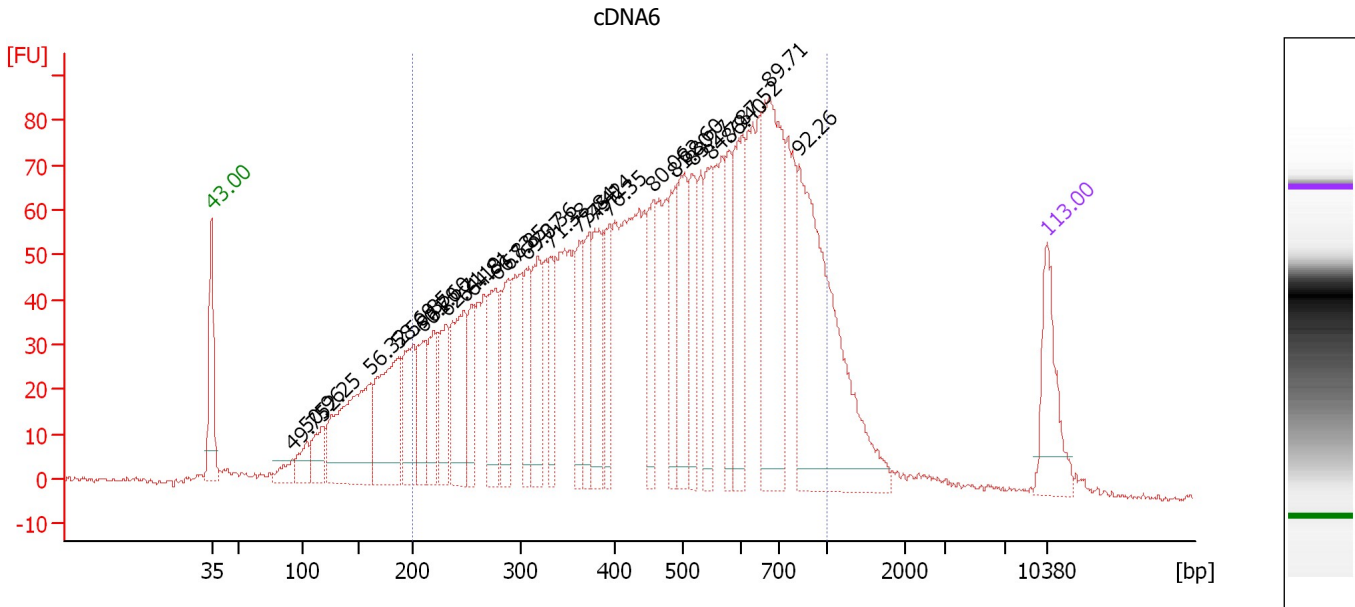
**Region table for sample 5 : cDBA5**

From [bp]	To [bp]	Average Size [bp]	Molarity [pmol/l]	Conc. [pg/μl]	Co Corr. for Area	% of Total	Size distribution in CV [%]
200	1,000	495	17,473.6	4,545.01	3,903.0	83	38.6

Assay Class: High Sensitivity DNA Assay  
 Data Path: C:\...ents and Settings\Bioanalyzer\2014-03-17\2014-03-17\_004.xad

Created: 3/17/2014 3:39:20 PM  
 Modified: 3/17/2014 4:41:50 PM

**Electropherogram Summary Continued ...**



**Overall Results for sample 6 : cDNA6**

Number of peaks found: 29                      Corr. Area 1: 2,625.4  
 Noise: 0.7

**Peak table for sample 6 : cDNA6**

Peak	Aligned Migration Time [s]	Size [bp]	Conc. [pg/μl]	Molarity [pmol/l]	Observations
1	43.00	35	125.00	5,411.3	Lower Marker
2	49.75	91	28.39	472.2	
3	50.96	103	40.20	593.0	
4	52.25	117	60.00	778.0	
5	56.32	161	256.91	2,412.8	
6	58.69	187	209.33	1,692.4	
7	59.85	200	111.38	842.9	
8	60.70	210	92.38	667.8	
9	61.60	219	76.73	529.7	
10	62.71	232	91.79	599.9	
11	64.19	248	155.33	948.4	
12	64.81	255	68.74	408.3	
13	66.83	277	111.56	609.5	
14	67.85	289	87.43	458.9	
15	69.37	306	73.50	363.7	
16	70.36	319	111.09	528.5	
17	71.38	331	73.28	335.1	
18	73.84	362	72.63	303.9	
19	74.42	369	84.02	344.7	
20	75.14	378	110.49	442.5	
21	76.35	393	72.24	278.2	
22	80.06	456	90.05	299.4	
23	81.80	486	92.39	287.9	
24	82.60	500	117.96	357.1	
25	83.27	515	93.79	276.2	

Assay Class: High Sensitivity DNA Assay  
 Data Path: C:\...ents and Settings\Bioanalyzer\2014-03-17\2014-03-17\_004.xad

Created: 3/17/2014 3:39:20 PM  
 Modified: 3/17/2014 4:41:50 PM

### Electropherogram Summary Continued ...

#### ... Peak table for sample 6 : cDNA6

Peak	Aligned Migration Time [s]	Size [bp]	Conc. [pg/μl]	Molarity [pmol/l]	Observations
26	84.79	547	102.44	284.0	
27	86.40	580	80.79	210.9	
28	87.52	606	129.88	324.8	
29	89.71	675	258.57	580.3	
30	92.26	829	392.29	716.8	
31	113.00	10,380	75.00	10.9	Upper Marker

#### Region table for sample 6 : cDNA6

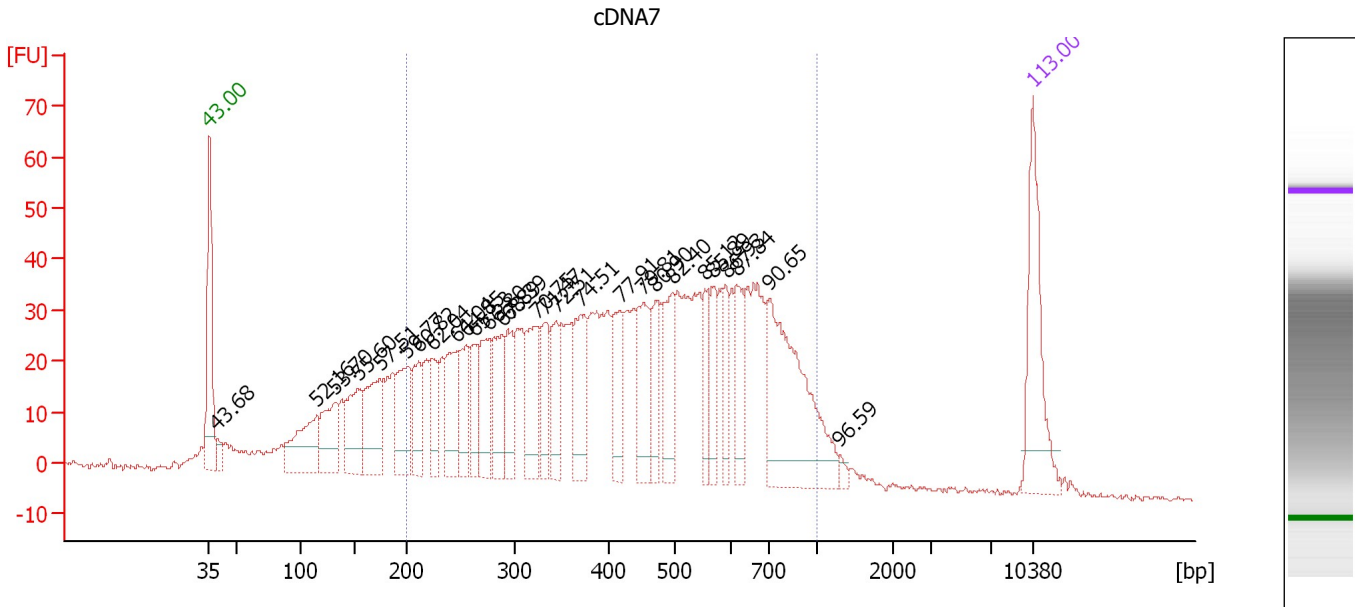
From [bp]	To [bp]	Average Size [bp]	Molarity [pmol/l]	Conc. [pg/μl]	Co Corr. for Area	% of Total	Size distribution in CV [%]
200	1,000	492	15,253.4	3,939.90	2,625.4	84	38.7



Assay Class: High Sensitivity DNA Assay  
 Data Path: C:\...ents and Settings\Bioanalyzer\2014-03-17\2014-03-17\_004.xad

Created: 3/17/2014 3:39:20 PM  
 Modified: 3/17/2014 4:41:50 PM

**Electropherogram Summary Continued ...**



**Overall Results for sample 7 : cDNA7**

Number of peaks found: 28                      Corr. Area 1: 1,409.9  
 Noise: 0.7

**Peak table for sample 7 : cDNA7**

Peak	Aligned Migration Time [s]	Size [bp]	Conc. [pg/μl]	Molarity [pmol/l]	Observations
1	43.00	35	125.00	5,411.3	Lower Marker
2	43.68	39	15.25	586.8	
3	52.16	116	88.31	1,155.3	
4	53.70	133	70.31	803.2	
5	55.60	153	79.38	783.9	
6	57.51	174	88.64	770.1	
7	59.77	199	74.69	567.7	
8	60.82	211	47.05	338.0	
9	62.04	224	44.90	303.2	
10	64.04	246	69.08	424.6	
11	64.85	256	51.46	305.2	
12	65.53	263	40.78	234.9	
13	66.80	277	57.13	312.4	
14	67.89	289	65.25	342.0	
15	68.39	295	47.13	242.4	
16	70.75	323	64.16	300.6	
17	71.47	332	45.70	208.3	
18	72.51	345	47.15	206.8	
19	74.51	370	69.76	285.4	
20	77.91	418	52.08	188.7	
21	79.81	451	67.91	227.9	
22	80.90	471	37.78	121.6	
23	82.40	497	53.54	163.3	
24	85.12	553	34.17	93.6	
25	85.89	570	36.14	96.1	

Assay Class: High Sensitivity DNA Assay  
 Data Path: C:\...ents and Settings\Bioanalyzer\2014-03-17\2014-03-17\_004.xad

Created: 3/17/2014 3:39:20 PM  
 Modified: 3/17/2014 4:41:50 PM

### Electropherogram Summary Continued ...

#### ... Peak table for sample 7 : cDNA7

Peak	Aligned Migration Time [s]	Size [bp]	Conc. [pg/ $\mu$ l]	Molarity [pmol/l]	Observations
26	86.93	592	30.57	78.3	
27	87.84	616	46.57	114.6	
28	90.65	711	177.37	378.0	
29	96.59	1,305	4.60	5.3	
30	113.00	10,380	75.00	10.9	Upper Marker

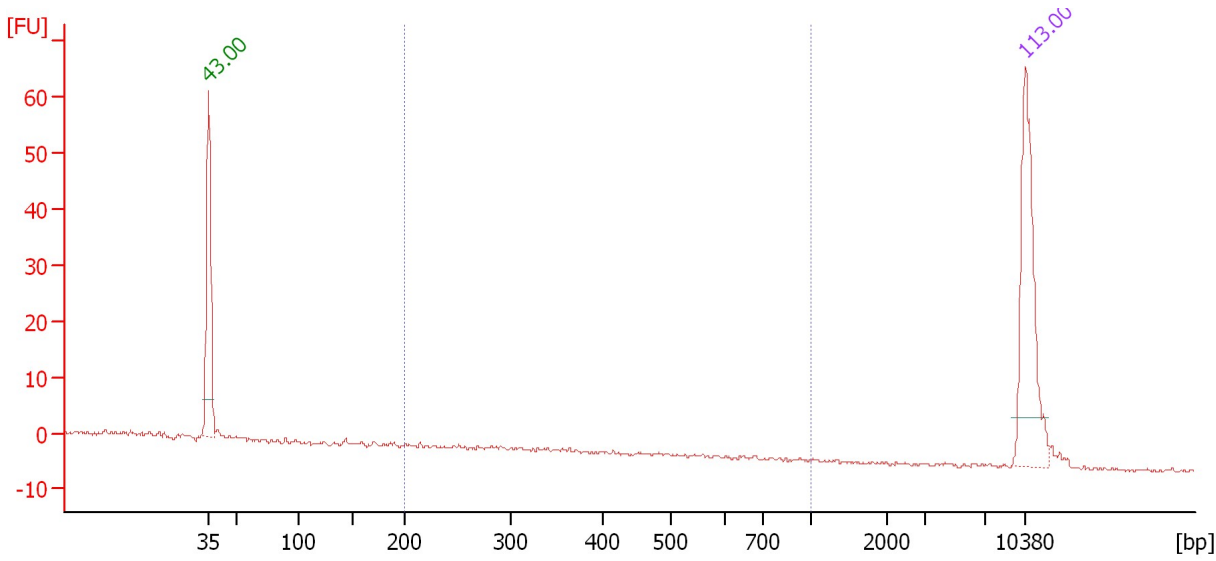
#### Region table for sample 7 : cDNA7

From [bp]	To [bp]	Average Size [bp]	Molarity [pmol/l]	Conc. [pg/ $\mu$ l]	Co Corr. for Area	% of Total	Size distribution in CV [%]
200	1,000	463	7,506.9	1,843.70	1,409.9	80	38.8

Assay Class: High Sensitivity DNA Assay  
 Data Path: C:\...ents and Settings\Bioanalyzer\2014-03-17\2014-03-17\_004.xad

Created: 3/17/2014 3:39:20 PM  
 Modified: 3/17/2014 4:41:50 PM

**Electropherogram Summary Continued ...**



**Overall Results for sample 8 :**

Number of peaks found: 0                      Corr. Area 1: 0.3  
 Noise: 0.2

**Peak table for sample 8 :**

Peak	Aligned Migration Time [s]	Size [bp]	Conc. [pg/μl]	Molarity [pmol/l]	Observations
1	43.00	35	125.00	5,411.3	Lower Marker
2	113.00	10,380	75.00	10.9	Upper Marker

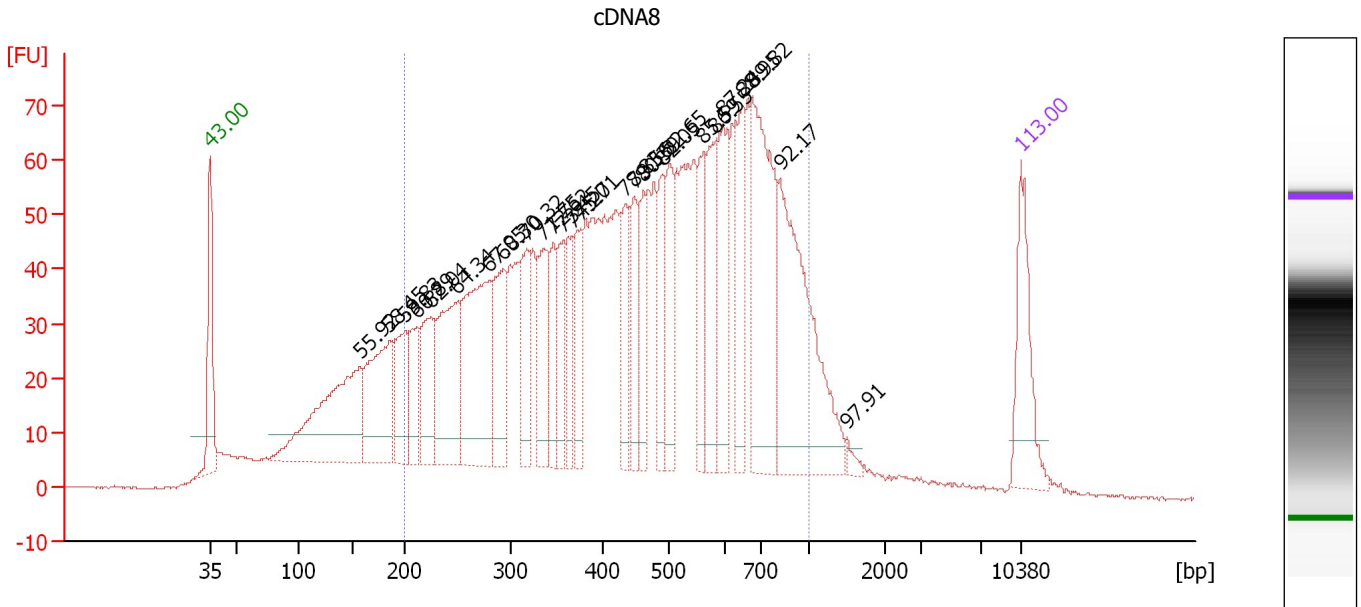
**Region table for sample 8 :**

From [bp]	To [bp]	Average Size [bp]	Molarity [pmol/l]	Conc. [pg/μl]	Co Corr. lor Area	% of Total	Size distribution in CV [%]
200	1,000	319	2.2	0.43	0.3	4	24.0

Assay Class: High Sensitivity DNA Assay  
 Data Path: C:\...ents and Settings\Bioanalyzer\2014-03-17\2014-03-17\_004.xad

Created: 3/17/2014 3:39:20 PM  
 Modified: 3/17/2014 4:41:50 PM

**Electropherogram Summary Continued ...**



**Overall Results for sample 9 : cDNA8**

Number of peaks found: 26                      Corr. Area 1: 2,230.4  
 Noise: 0.2

**Peak table for sample 9 : cDNA8**

Peak	Aligned Migration Time [s]	Size [bp]	Conc. [pg/μl]	Molarity [pmol/l]	Observations
1	43.00	35	125.00	5,411.3	Lower Marker
2	55.92	157	282.72	2,729.2	
3	58.45	185	171.64	1,407.2	
4	59.83	200	89.14	675.3	
5	60.89	212	68.99	493.8	
6	62.04	224	97.19	656.2	
7	64.34	250	177.65	1,077.3	
8	67.05	280	236.02	1,277.8	
9	68.30	294	105.35	543.7	
10	70.32	318	87.77	418.1	
11	71.75	336	98.08	442.4	
12	72.62	347	55.23	241.3	
13	73.45	357	54.79	232.4	
14	74.27	367	59.34	244.7	
15	75.01	377	68.21	274.4	
16	78.83	434	65.27	227.7	
17	79.56	447	75.04	254.3	
18	80.39	462	57.99	190.4	
19	82.05	491	60.40	186.5	
20	82.65	501	80.92	244.6	
21	85.59	563	72.29	194.5	
22	86.55	584	86.23	223.9	
23	87.24	598	120.43	305.1	
24	88.95	651	102.80	239.3	
25	89.82	679	239.62	535.1	

Assay Class: High Sensitivity DNA Assay  
 Data Path: C:\...ents and Settings\Bioanalyzer\2014-03-17\2014-03-17\_004.xad

Created: 3/17/2014 3:39:20 PM  
 Modified: 3/17/2014 4:41:50 PM

### Electropherogram Summary Continued ...

#### ... Peak table for sample 9 : cDNA8

Peak	Aligned Migration Time [s]	Size [bp]	Conc. [pg/ $\mu$ l]	Molarity [pmol/l]	Observations
26	92.17	822	261.49	481.8	
27	97.91	1,506	7.10	7.1	
28	113.00	10,380	75.00	10.9	Upper Marker

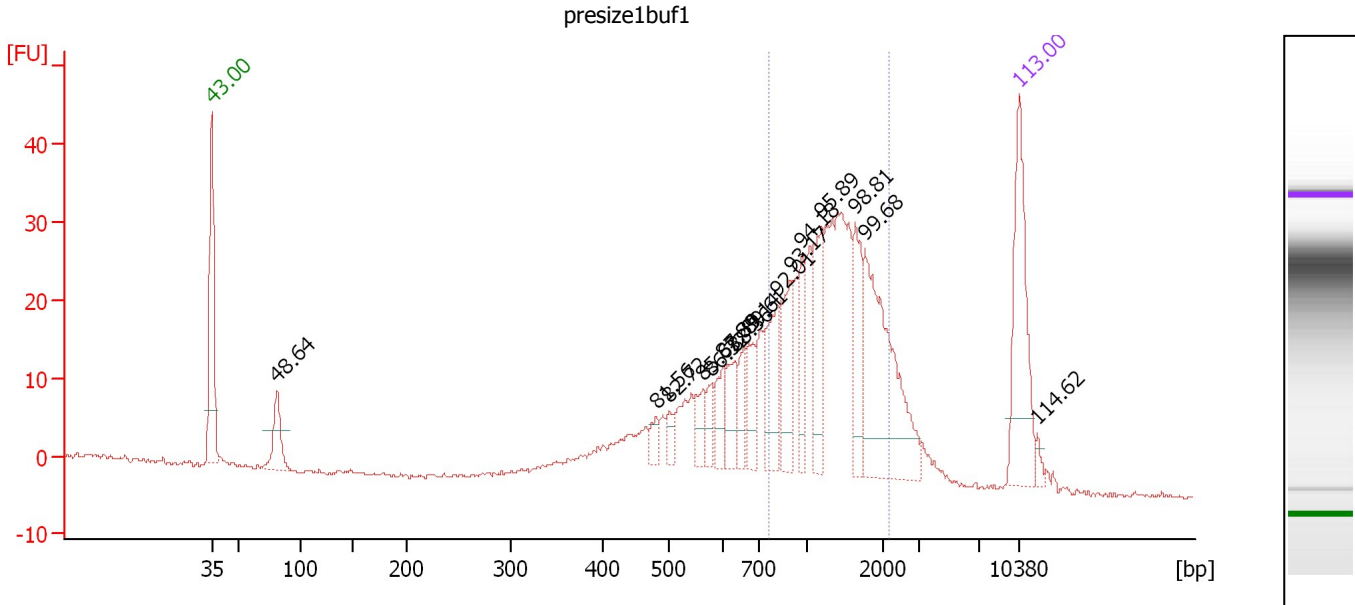
#### Region table for sample 9 : cDNA8

From [bp]	To [bp]	Average Size [bp]	Molarity [pmol/l]	Conc. [pg/ $\mu$ l]	Co Corr. lor Area	% of Total	Size distribution in CV [%]
200	1,000	485	13,802.2	3,516.79	2,230.4	80	38.8

Assay Class: High Sensitivity DNA Assay  
 Data Path: C:\...ents and Settings\Bioanalyzer\2014-03-17\2014-03-17\_004.xad

Created: 3/17/2014 3:39:20 PM  
 Modified: 3/17/2014 4:41:50 PM

**Electropherogram Summary Continued ...**



**Overall Results for sample 10 : presize1buf1**

Number of peaks found: 16      Corr. Area 1: 306.0  
 Noise: 0.3

**Peak table for sample 10 : presize1buf1**

Peak	Aligned Migration Time [s]	Size [bp]	Conc. [pg/μl]	Molarity [pmol/l]	Observations
1	43.00	35	125.00	5,411.3	Lower Marker
2	48.64	81	44.18	828.8	
3	81.56	482	11.20	35.2	
4	82.72	503	10.65	32.1	
5	85.63	564	17.67	47.4	
6	86.32	579	13.11	34.3	
7	87.39	602	22.18	55.9	
8	88.36	632	27.60	66.1	
9	89.14	657	21.14	48.7	
10	89.61	672	25.65	57.8	
11	92.01	811	48.91	91.4	
12	93.17	896	40.81	69.0	
13	94.18	971	28.04	43.8	
14	95.89	1,199	46.31	58.5	
15	98.81	1,641	42.62	39.3	
16	99.68	1,775	120.86	103.2	
17	113.00	10,380	75.00	10.9	Upper Marker
18	114.62	11,962	0.00	0.0	

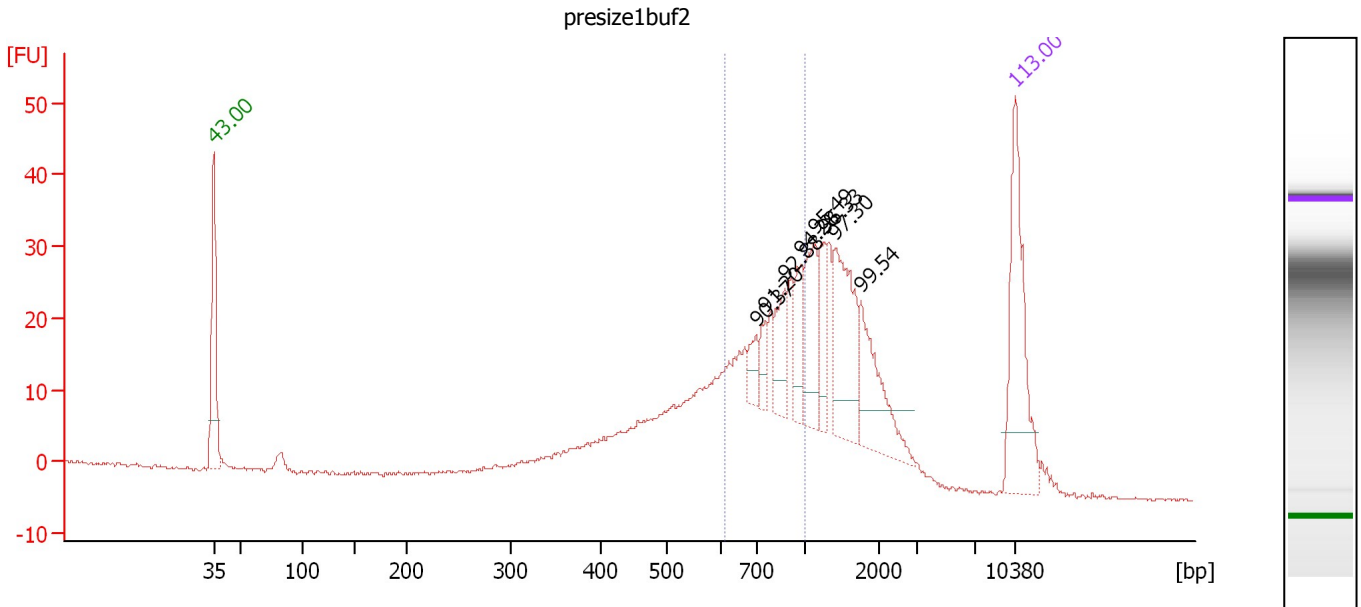
**Region table for sample 10 : presize1buf1**

From [bp]	To [bp]	Average Size [bp]	Molarity [pmol/l]	Conc. [pg/μl]	Co Corr. lor Area	% of Total	Size distribution in CV [%]
763	2,154	1,338	588.5	480.23	306.0	54	28.3

Assay Class: High Sensitivity DNA Assay  
 Data Path: C:\...ents and Settings\Bioanalyzer\2014-03-17\2014-03-17\_004.xad

Created: 3/17/2014 3:39:20 PM  
 Modified: 3/17/2014 4:41:50 PM

**Electropherogram Summary Continued ...**



**Overall Results for sample 11 : presize1buf2**

Number of peaks found: 8                      Corr. Area 1: 174.0  
 Noise: 0.2

**Peak table for sample 11 : presize1buf2**

Peak	Aligned Migration Time [s]	Size [bp]	Conc. [pg/μl]	Molarity [pmol/l]	Observations
1	43.00	35	125.00	5,411.3	Lower Marker
2	90.37	696	14.42	31.4	
3	91.20	752	12.94	26.1	
4	92.88	875	26.62	46.1	
5	94.28	978	25.40	39.4	
6	95.49	1,137	43.26	57.6	
7	96.33	1,265	24.12	28.9	
8	97.30	1,413	69.61	74.6	
9	99.54	1,753	51.65	44.6	
10	113.00	10,380	75.00	10.9	Upper Marker

**Region table for sample 11 : presize1buf2**

From [bp]	To [bp]	Average Size [bp]	Molarity [pmol/l]	Conc. [pg/μl]	Co Corr. lor Area	% of Total	Size distribution in CV [%]
609	1,000	791	490.1	250.34	174.0	30	15.2