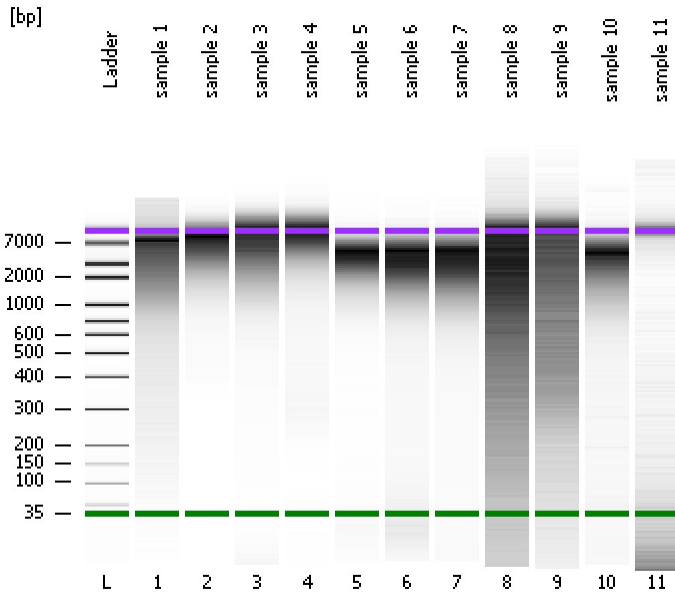


Assay Class: High Sensitivity DNA Assay  
Data Path: C:\...ents and Settings\Bioanalyzer\2014-03-19\2014-03-19\_006.xad

Created: 3/19/2014 3:14:14 PM  
Modified: 3/19/2014 3:58:19 PM

**Electrophoresis File Run Summary**



Instrument Information:

Instrument Name: DE13701086      Firmware: C.01.069  
Serial#: DE13701086      Type: G2938B

Assay Information:

Assay Origin Path: C:\Program Files\Agilent\2100 bioanalyzer\2100 expert\assays\dsDNA\High Sensitivity DNA.xsy  
Assay Class: High Sensitivity DNA Assay  
Version: 1.03  
Assay Comments: Copyright © 2003-2010 Agilent Technologies

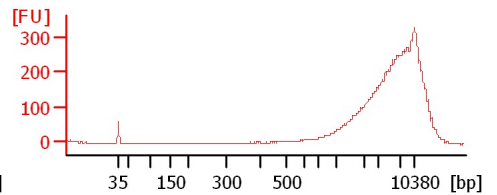
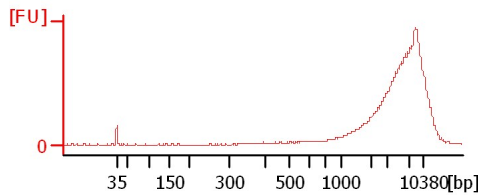
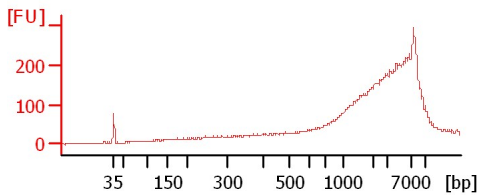
Chip Information:

Chip Lot #:   
Reagent Kit Lot #:   
Chip Comments:

sample 1

sample 2

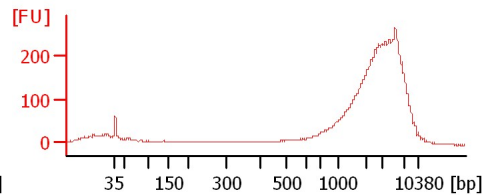
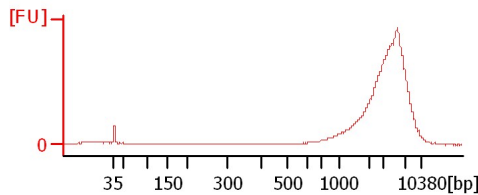
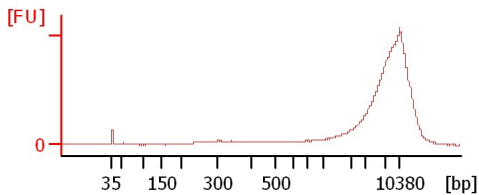
sample 3



sample 4

sample 5

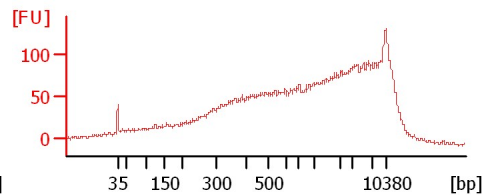
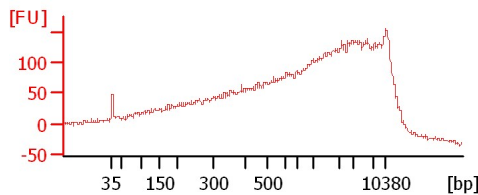
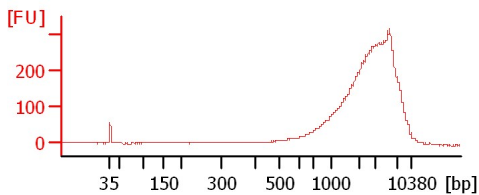
sample 6



sample 7

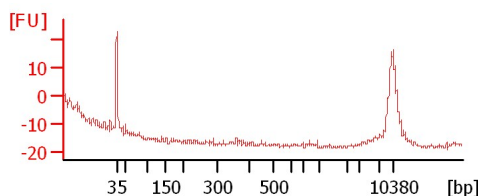
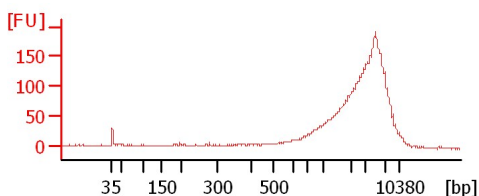
sample 8

sample 9



sample 10

sample 11



Assay Class: High Sensitivity DNA Assay  
Data Path: C:\...ents and Settings\Bioanalyzer\2014-03-19\2014-03-19\_006.xad

Created: 3/19/2014 3:14:14 PM  
Modified: 3/19/2014 3:58:19 PM

**Electrophoresis File Run Summary (Chip Summary)**

Sample Name	Sample Comment	Rest. Digest	Status	Observation	Result Label	Result Color
sample 1		<input type="checkbox"/>	✓			
sample 2		<input type="checkbox"/>	✓			
sample 3		<input type="checkbox"/>	✓			
sample 4		<input type="checkbox"/>	✓			
sample 5		<input type="checkbox"/>	✓			
sample 6		<input type="checkbox"/>	✓			
sample 7		<input type="checkbox"/>	✓			
sample 8		<input type="checkbox"/>	✓			
sample 9		<input type="checkbox"/>	✓			
sample 10		<input type="checkbox"/>	✓			
sample 11		<input type="checkbox"/>	✓			
Ladder		<input type="checkbox"/>	✓			

**Chip Lot #**

**Reagent Kit Lot #**

**Chip Comments :**

Assay Class: High Sensitivity DNA Assay  
Data Path: C:\...ents and Settings\Bioanalyzer\2014-03-19\2014-03-19\_006.xad

Created: 3/19/2014 3:14:14 PM  
Modified: 3/19/2014 3:58:19 PM

**Electrophoresis Assay Details**

**General Analysis Settings**

Number of Available Sample and Ladder Wells (Max.) : 12  
Minimum Visible Range [s] : 32  
Maximum Visible Range [s] : 138  
Start Analysis Time Range [s] : 33  
End Analysis Time Range [s] : 137.5  
Ladder Concentration [pg/μl] : 1950  
Uses Standard Area for Ladder Fragments  
Lower Marker Concentration [pg/μl] : 125  
Upper Marker Concentration [pg/μl] : 75  
Used Upper Marker for Quantitation  
Standard Curve Fit is Point to Point  
Show Data Aligned to Lower and Upper Marker

**Integrator Settings**

Integration Start Time [s] : 33.05  
Integration End Time [s] : 137  
Slope Threshold : 0.8  
Height Threshold [FU] : 5  
Area Threshold : 0.1  
Width Threshold [s] : 0.6  
Baseline Plateau [s] : 0.5

**Filter Settings**

Filter Width [s] : 0.5  
Polynomial Order : 4

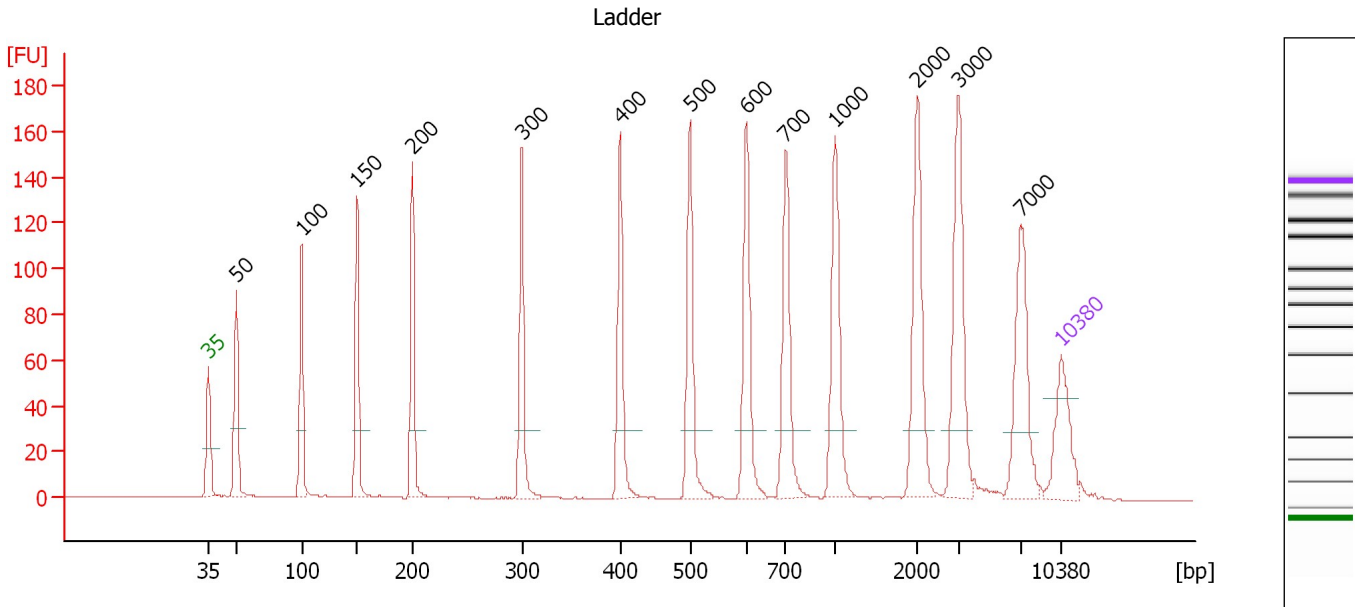
**Ladder**

Ladder Peak	Size	Area
1	35	160
2	50	210
3	100	208
4	150	221
5	200	242
6	300	270
7	400	305
8	500	306
9	600	336
10	700	321
11	1000	366
12	2000	413
13	3000	411
14	7000	400
15	10380	214

Assay Class: High Sensitivity DNA Assay  
 Data Path: C:\...ents and Settings\Bioanalyzer\2014-03-19\2014-03-19\_006.xad

Created: 3/19/2014 3:14:14 PM  
 Modified: 3/19/2014 3:58:19 PM

**Electropherogram Summary**



**Overall Results for Ladder**

Noise: 0.1

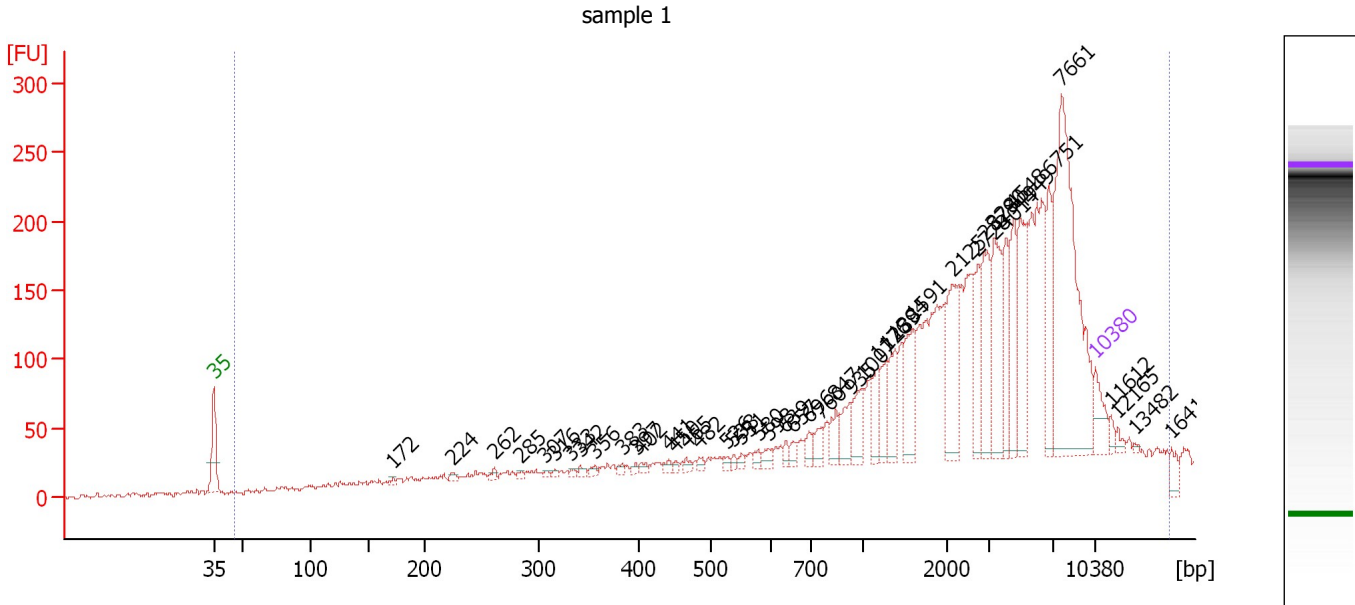
**Peak table for Ladder**

Peak	Aligned Migration Time [s]	Size [bp]	Conc. [pg/μl]	Molarity [pmol/l]	Observations
1	43.00	35	125.00	5,411.3	Lower Marker
2	45.27	50	150.00	4,545.5	Ladder Peak
3	50.66	100	150.00	2,272.7	Ladder Peak
4	55.21	150	150.00	1,515.2	Ladder Peak
5	59.76	200	150.00	1,136.4	Ladder Peak
6	68.72	300	150.00	757.6	Ladder Peak
7	76.78	400	150.00	568.2	Ladder Peak
8	82.51	500	150.00	454.5	Ladder Peak
9	87.14	600	150.00	378.8	Ladder Peak
10	90.38	700	150.00	324.7	Ladder Peak
11	94.45	1,000	150.00	227.3	Ladder Peak
12	101.19	2,000	150.00	113.6	Ladder Peak
13	104.56	3,000	150.00	75.8	Ladder Peak
14	109.63	7,000	150.00	32.5	Ladder Peak
15	113.00	10,380	75.00	10.9	Upper Marker

Assay Class: High Sensitivity DNA Assay  
 Data Path: C:\...ents and Settings\Bioanalyzer\2014-03-19\2014-03-19\_006.xad

Created: 3/19/2014 3:14:14 PM  
 Modified: 3/19/2014 3:58:19 PM

**Electropherogram Summary Continued ...**



**Overall Results for sample 1 : sample 1**

Number of peaks found: 45                      Corr. Area 1: 2,842.8  
 Noise: 1.9

**Peak table for sample 1 : sample 1**

Peak	Aligned Migration Time [s]	Size [bp]	Conc. [pg/μl]	Molarity [pmol/l]	Observations
1	43.00	35	125.00	5,411.3	Lower Marker
2	57.23	172	9.35	82.3	
3	61.89	224	18.10	122.6	
4	65.27	262	16.75	97.1	
5	67.39	285	11.76	62.5	
6	69.30	307	10.68	52.7	
7	70.02	316	10.56	50.6	
8	71.37	333	10.03	45.7	
9	72.09	342	13.86	61.4	
10	73.19	356	13.40	57.1	
11	75.40	383	13.06	51.7	
12	76.50	397	10.71	40.9	
13	76.88	402	15.57	58.7	
14	79.12	441	16.88	58.0	
15	79.63	450	10.60	35.7	
16	80.52	465	16.92	55.1	
17	81.49	482	17.32	54.4	
18	83.70	526	13.52	39.0	
19	84.25	538	12.66	35.7	
20	84.88	551	15.55	42.7	
21	86.19	580	20.45	53.5	
22	87.04	598	24.33	61.7	
23	88.40	639	21.38	50.7	
24	88.99	657	22.29	51.4	
25	90.26	696	40.26	87.6	

Assay Class: High Sensitivity DNA Assay  
 Data Path: C:\...ents and Settings\Bioanalyzer\2014-03-19\2014-03-19\_006.xad

Created: 3/19/2014 3:14:14 PM  
 Modified: 3/19/2014 3:58:19 PM

**Electropherogram Summary Continued ...**

**... Peak table for sample 1 : sample 1**

Peak	Aligned Migration Time [s]	Size [bp]	Conc. [pg/μl]	Molarity [pmol/l]	Observations
26	91.19	760	42.05	83.9	
27	92.38	847	59.58	106.6	
28	93.56	935	80.75	130.9	
29	94.49	1,007	92.02	138.5	
30	95.64	1,176	82.73	106.6	
31	96.40	1,289	83.08	97.6	
32	97.04	1,384	113.05	123.8	
33	98.43	1,591	148.21	141.1	
34	101.61	2,125	215.69	153.8	
35	103.64	2,728	118.70	65.9	
36	104.15	2,879	173.93	91.5	
37	104.91	3,280	220.04	101.6	
38	105.84	4,014	131.43	49.6	
39	106.52	4,548	160.82	53.6	
40	107.03	4,949	220.14	67.4	
41	109.32	6,751	168.84	37.9	
42	110.29	7,661	766.19	151.5	
43	113.00	10,380	75.00	10.9	Upper Marker
44	114.23	11,612	0.00	0.0	
45	114.78	12,165	0.00	0.0	
46	116.09	13,482	0.00	0.0	
47	119.01	16,413	0.00	0.0	

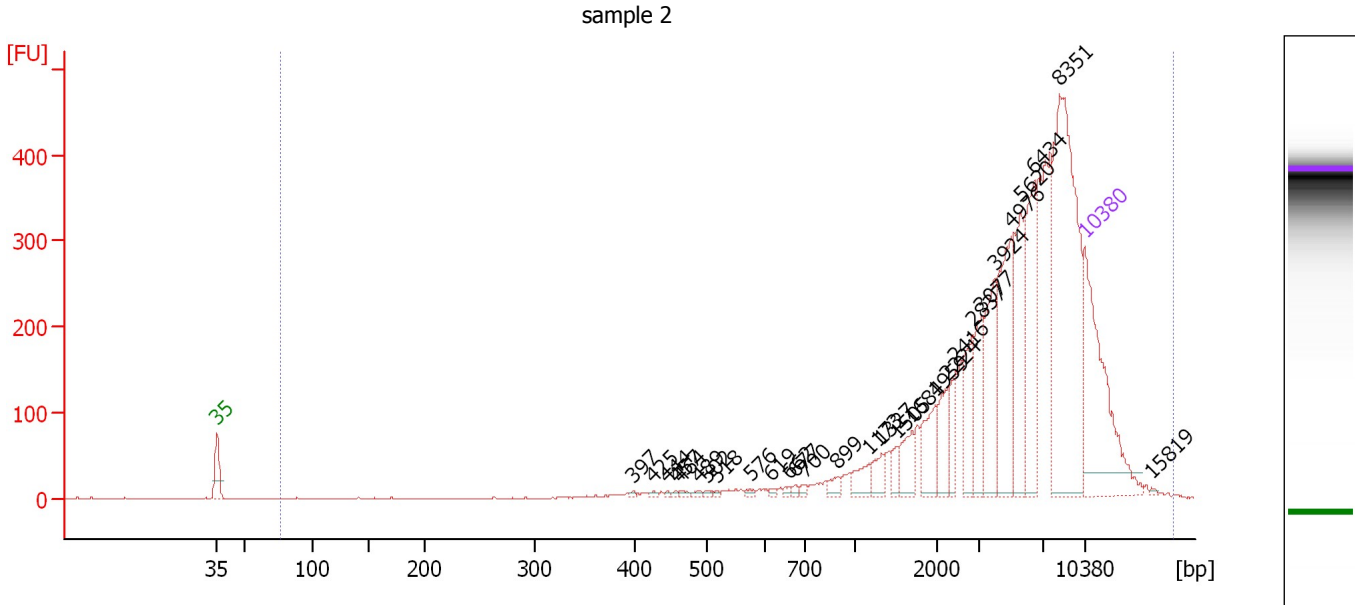
**Region table for sample 1 : sample 1**

From [bp]	To [bp]	Average Size [bp]	Molarity [pmol/l]	Conc. [pg/μl]	Co Corr. lor Area	% of Total	Size distribution in CV [%]
46	16,174	4,120	5,338.4	4,731.19	2,842.8	100	71.5

Assay Class: High Sensitivity DNA Assay  
 Data Path: C:\...ents and Settings\Bioanalyzer\2014-03-19\2014-03-19\_006.xad

Created: 3/19/2014 3:14:14 PM  
 Modified: 3/19/2014 3:58:19 PM

**Electropherogram Summary Continued ...**



**Overall Results for sample 2 : sample 2**

Number of peaks found: 29                      Corr. Area 1: 3,867.0  
 Noise: 0.6

**Peak table for sample 2 : sample 2**

Peak	Aligned Migration Time [s]	Size [bp]	Conc. [pg/μl]	Molarity [pmol/l]	Observations
1	43.00	35	125.00	5,411.3	Lower Marker
2	76.56	397	0.97	3.7	
3	78.19	425	1.31	4.7	
4	79.31	444	1.06	3.6	
5	80.04	457	1.08	3.6	
6	80.43	464	1.86	6.1	
7	81.89	489	1.78	5.5	
8	82.58	502	1.47	4.4	
9	83.36	518	1.05	3.1	
10	86.02	576	1.82	4.8	
11	87.74	619	1.55	3.8	
12	89.16	662	1.89	4.3	
13	89.64	677	1.64	3.7	
14	90.37	700	2.26	4.9	
15	93.08	899	4.76	8.0	
16	95.62	1,173	9.43	12.2	
17	96.65	1,327	9.07	10.4	
18	97.86	1,505	5.57	5.6	
19	99.06	1,684	14.98	13.5	
20	100.91	1,959	20.25	15.7	
21	101.94	2,224	17.11	11.7	
22	102.59	2,416	13.00	8.2	
23	104.01	2,837	25.84	13.8	
24	104.65	3,077	21.50	10.6	
25	105.73	3,924	40.02	15.5	

Assay Class: High Sensitivity DNA Assay  
 Data Path: C:\...ents and Settings\Bioanalyzer\2014-03-19\2014-03-19\_006.xad

Created: 3/19/2014 3:14:14 PM  
 Modified: 3/19/2014 3:58:19 PM

### Electropherogram Summary Continued ...

#### ... Peak table for sample 2 : sample 2

Peak	Aligned Migration Time [s]	Size [bp]	Conc. [pg/ $\mu$ l]	Molarity [pmol/l]	Observations
26	107.06	4,976	57.33	17.5	
27	107.88	5,620	44.09	11.9	
28	108.91	6,434	52.67	12.4	
29	110.98	8,351	147.63	26.8	
30	113.00	10,380	75.00	10.9	Upper Marker
31	118.42	15,819	0.00	0.0	

#### Region table for sample 2 : sample 2

From [bp]	To [bp]	Average Size [bp]	Molarity [pmol/l]	Conc. [pg/ $\mu$ l]	Co Corr. for Area	% of Total	Size distribution in CV [%]
77	17,496	6,133	363.7	630.36	 3,867.0	100	56.0

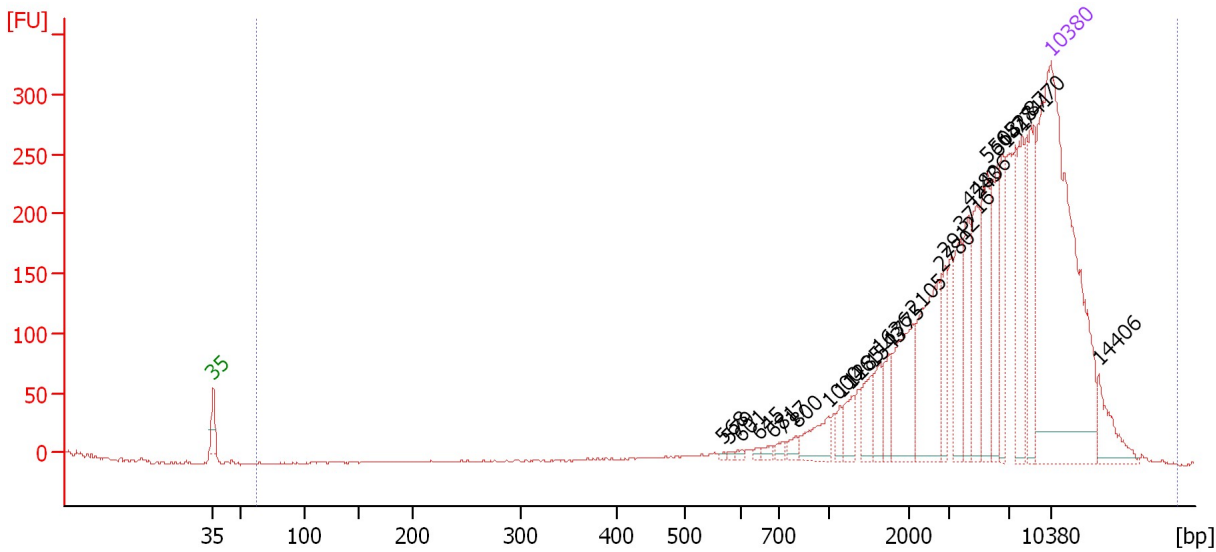


Assay Class: High Sensitivity DNA Assay  
 Data Path: C:\...ents and Settings\Bioanalyzer\2014-03-19\2014-03-19\_006.xad

Created: 3/19/2014 3:14:14 PM  
 Modified: 3/19/2014 3:58:19 PM

**Electropherogram Summary Continued ...**

sample 3



**Overall Results for sample 3 : sample 3**

Number of peaks found: 25                      Corr. Area 1: 2,839.4  
 Noise: 0.7

**Peak table for sample 3 : sample 3**

Peak	Aligned Migration Time [s]	Size [bp]	Conc. [pg/μl]	Molarity [pmol/l]	Observations
1	43.00	35	125.00	5,411.3	Lower Marker
2	85.67	568	0.43	1.1	
3	86.16	579	0.57	1.5	
4	87.18	601	0.74	1.9	
5	88.61	645	0.69	1.6	
6	89.77	681	1.30	2.9	
7	90.62	717	1.52	3.2	
8	91.73	800	1.96	3.7	
9	94.45	1,000	6.90	10.4	
10	95.43	1,146	2.31	3.1	
11	96.37	1,285	4.20	4.9	
12	98.11	1,543	5.76	5.7	
13	98.73	1,636	5.15	4.8	
14	99.67	1,775	5.20	4.4	
15	101.54	2,105	15.30	11.0	
16	103.82	2,780	22.09	12.0	
17	104.26	2,912	6.94	3.6	
18	105.46	3,716	10.16	4.1	
19	106.13	4,243	10.43	3.7	
20	106.85	4,806	12.50	3.9	
21	107.74	5,508	14.29	3.9	
22	108.54	6,141	11.81	2.9	
23	109.03	6,528	10.82	2.5	
24	110.37	7,741	14.43	2.8	
25	111.39	8,770	12.82	2.2	

Assay Class: High Sensitivity DNA Assay  
 Data Path: C:\...ents and Settings\Bioanalyzer\2014-03-19\2014-03-19\_006.xad

Created: 3/19/2014 3:14:14 PM  
 Modified: 3/19/2014 3:58:19 PM

### Electropherogram Summary Continued ...

#### ... Peak table for sample 3 : sample 3

Peak	Aligned Migration Time [s]	Size [bp]	Conc. [pg/ $\mu$ l]	Molarity [pmol/l]	Observations
26	113.00	10,380	75.00	10.9	Upper Marker
27	117.01	14,406	0.00	0.0	

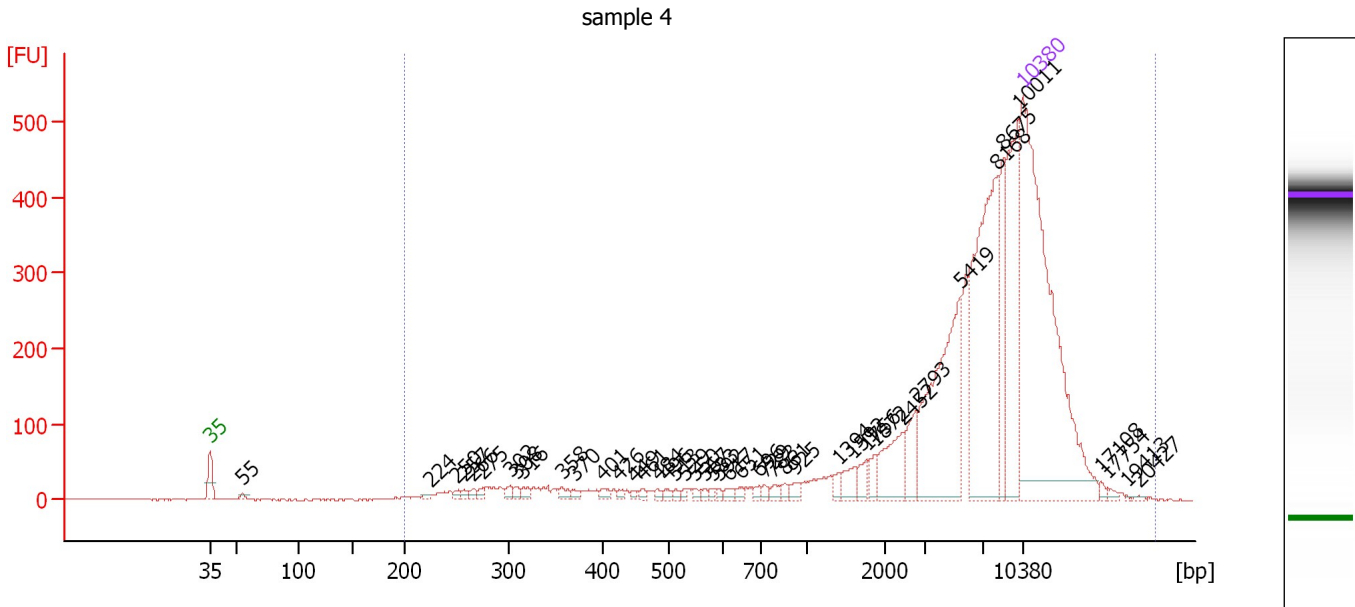
#### Region table for sample 3 : sample 3

From [bp]	To [bp]	Average Size [bp]	Molarity [pmol/l]	Conc. [pg/ $\mu$ l]	Co Corr. lor Area	% of Total	Size distribution in CV [%]
63	20,952	6,659	133.1	222.88	2,839.4	100	61.2

Assay Class: High Sensitivity DNA Assay  
 Data Path: C:\...ents and Settings\Bioanalyzer\2014-03-19\2014-03-19\_006.xad

Created: 3/19/2014 3:14:14 PM  
 Modified: 3/19/2014 3:58:19 PM

**Electropherogram Summary Continued ...**



**Overall Results for sample 4 : sample 4**

Number of peaks found: 44                      Corr. Area 1: 3,623.4  
 Noise: 0.7

**Peak table for sample 4 : sample 4**

Peak	Aligned Migration Time [s]	Size [bp]	Conc. [pg/μl]	Molarity [pmol/l]	Observations
1	43.00	35	125.00	5,411.3	Lower Marker
2	45.80	55	0.89	24.7	
3	61.92	224	0.70	4.8	
4	64.22	250	1.09	6.6	
5	64.86	257	0.96	5.7	
6	65.69	266	1.26	7.2	
7	66.52	275	1.37	7.6	
8	68.86	302	1.63	8.2	
9	69.36	308	1.25	6.2	
10	70.01	316	1.39	6.7	
11	73.36	358	1.54	6.5	
12	74.37	370	1.20	4.9	
13	76.81	401	1.31	5.0	
14	78.28	426	0.71	2.5	
15	79.56	449	0.66	2.2	
16	80.25	461	0.72	2.4	
17	81.58	484	0.82	2.6	
18	82.27	496	0.89	2.7	
19	83.10	513	0.76	2.3	
20	83.83	529	0.74	2.1	
21	84.84	550	0.74	2.0	
22	85.62	567	0.77	2.1	
23	86.36	583	0.68	1.8	
24	86.77	592	0.66	1.7	
25	87.69	617	1.16	2.8	

Assay Class: High Sensitivity DNA Assay  
 Data Path: C:\...ents and Settings\Bioanalyzer\2014-03-19\2014-03-19\_006.xad

Created: 3/19/2014 3:14:14 PM  
 Modified: 3/19/2014 3:58:19 PM

**Electropherogram Summary Continued ...**

**... Peak table for sample 4 : sample 4**

Peak	Aligned Migration Time [s]	Size [bp]	Conc. [pg/μl]	Molarity [pmol/l]	Observations
26	88.79	651	1.07	2.5	
27	90.26	696	0.94	2.0	
28	90.77	729	0.97	2.0	
29	91.50	783	1.40	2.7	
30	92.56	861	0.87	1.5	
31	93.43	925	1.58	2.6	
32	97.11	1,394	1.47	1.6	
33	98.44	1,592	3.16	3.0	
34	99.54	1,756	2.39	2.1	
35	100.32	1,872	2.16	1.8	
36	102.71	2,452	9.14	5.6	
37	103.86	2,793	6.11	3.3	
38	107.63	5,419	35.95	10.1	
39	110.80	8,168	48.25	9.0	
40	111.30	8,675	12.95	2.3	
41	112.63	10,011	26.69	4.0	
42	113.00	10,380	75.00	10.9	Upper Marker
43	119.71	17,108	0.00	0.0	
44	120.35	17,754	0.00	0.0	
45	122.00	19,413	0.00	0.0	
46	123.01	20,427	0.00	0.0	

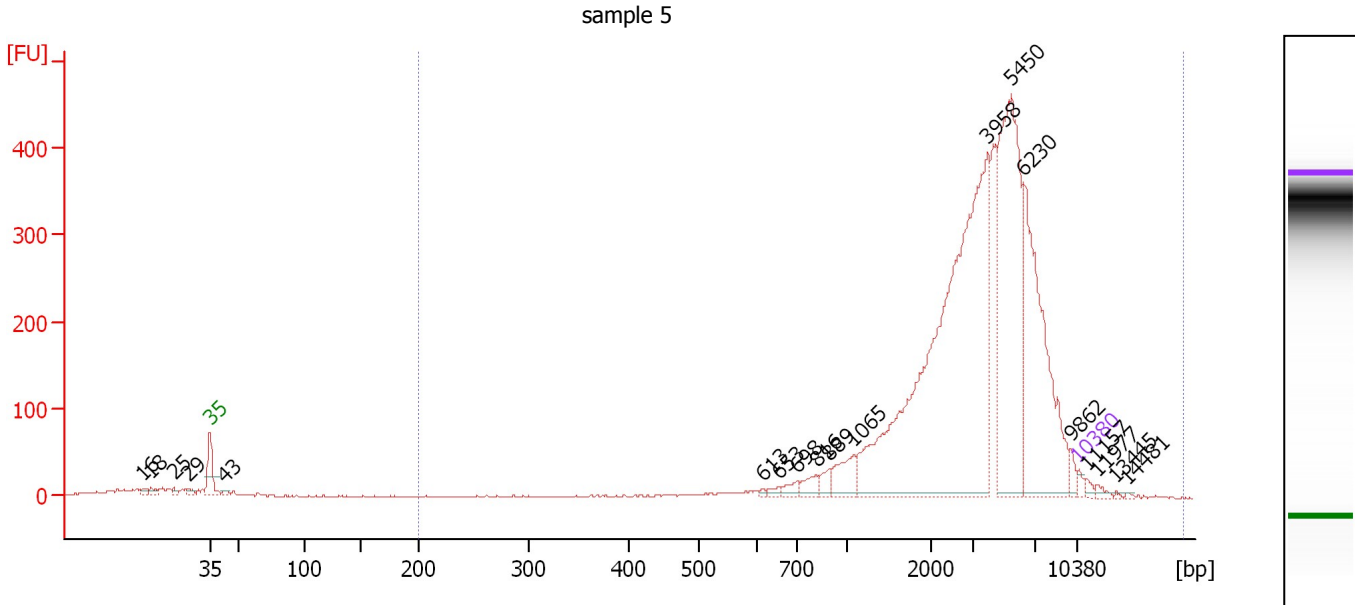
**Region table for sample 4 : sample 4**

From [bp]	To [bp]	Average Size [bp]	Molarity [pmol/l]	Conc. [pg/μl]	Co Corr. lor Area	% of Total	Size distribution in CV [%]
200	21,772	7,551	233.9	209.68	 3,623.4	100	55.8

Assay Class: High Sensitivity DNA Assay  
 Data Path: C:\...ents and Settings\Bioanalyzer\2014-03-19\2014-03-19\_006.xad

Created: 3/19/2014 3:14:14 PM  
 Modified: 3/19/2014 3:58:19 PM

**Electropherogram Summary Continued ...**



**Overall Results for sample 5 : sample 5**

Number of peaks found: 19                      Corr. Area 1: 4,025.0  
 Noise: 0.9

**Peak table for sample 5 : sample 5**

Peak	Aligned Migration Time [s]	Size [bp]	Conc. [pg/μl]	Molarity [pmol/l]	Observations
1	37.62	16	0.00	0.0	
2	38.27	18	0.00	0.0	
3	40.07	25	0.00	0.0	
4	41.24	29	0.00	0.0	
5	43.00	35	125.00	5,411.3	Lower Marker
6	44.25	43	73.01	2,559.2	
7	87.57	613	32.61	80.6	
8	88.86	653	93.54	217.0	
9	90.33	698	161.70	350.9	
10	91.96	816	236.70	439.2	
11	92.95	889	178.91	304.8	
12	94.89	1,065	513.45	730.6	
13	105.77	3,958	9,951.16	3,809.2	
14	107.67	5,450	4,471.48	1,243.1	
15	108.65	6,230	3,568.23	867.8	
16	112.48	9,862	137.47	21.1	
17	113.00	10,380	75.00	10.9	Upper Marker
18	113.77	11,157	0.00	0.0	
19	114.59	11,977	0.00	0.0	
20	116.05	13,445	0.00	0.0	
21	117.09	14,481	0.00	0.0	

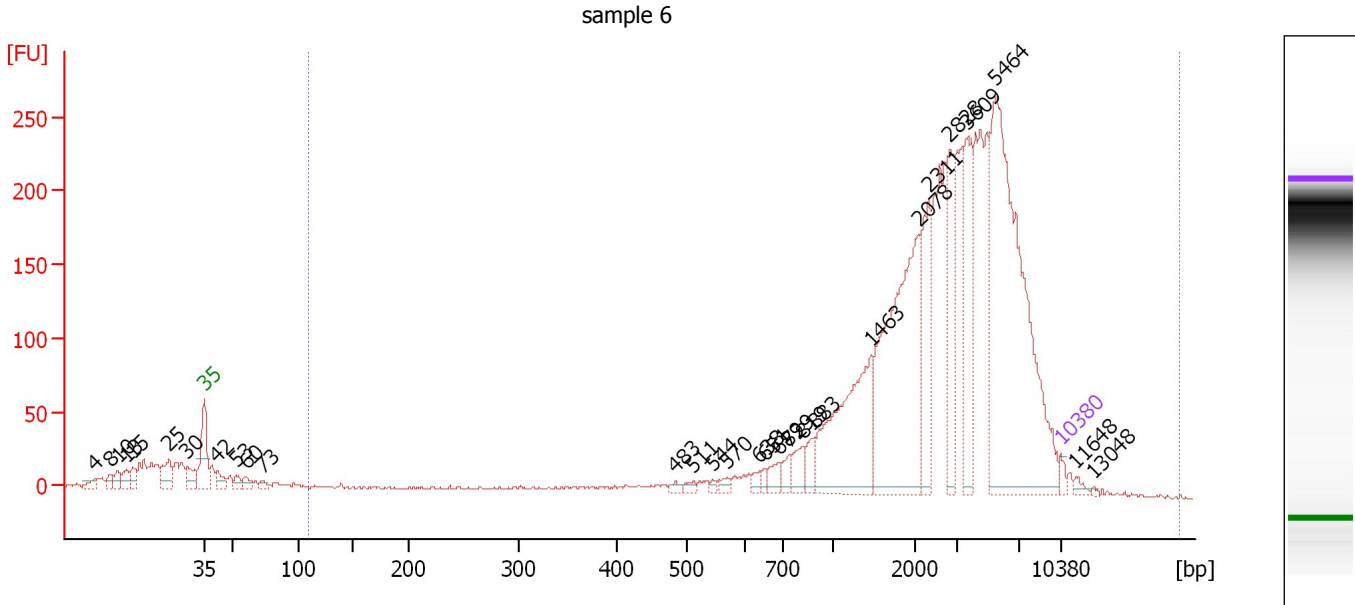
**Region table for sample 5 : sample 5**

From [bp]	To [bp]	Average Size [bp]	Molarity [pmol/l]	Conc. [pg/μl]	Co Corr. lor Area	% of Total	Size distribution in CV [%]
200	18,865	4,199	12,178.8	21,474.51	4,025.0	96	56.5

Assay Class: High Sensitivity DNA Assay  
 Data Path: C:\...ents and Settings\Bioanalyzer\2014-03-19\2014-03-19\_006.xad

Created: 3/19/2014 3:14:14 PM  
 Modified: 3/19/2014 3:58:19 PM

**Electropherogram Summary Continued ...**



**Overall Results for sample 6 : sample 6**

Number of peaks found: 29                      Corr. Area 1: 3,233.5  
 Noise: 1.0

**Peak table for sample 6 : sample 6**

Peak	Aligned Migration Time [s]	Size [bp]	Conc. [pg/μl]	Molarity [pmol/l]	Observations
1	34.11	4	0.00	0.0	
2	35.29	8	0.00	0.0	
3	35.94	10	0.00	0.0	
4	36.59	13	0.00	0.0	
5	37.16	15	0.00	0.0	
6	40.12	25	0.00	0.0	
7	41.61	30	0.00	0.0	
8	43.00	35	125.00	5,411.3	Lower Marker
9	44.09	42	288.56	10,364.1	
10	45.62	53	172.77	4,924.0	
11	46.40	60	187.04	4,688.0	
12	47.75	73	108.73	2,256.5	
13	81.53	483	75.75	237.6	
14	83.01	511	85.63	253.9	
15	84.54	544	50.28	140.1	
16	85.76	570	93.14	247.5	
17	88.37	638	99.72	236.8	
18	88.81	651	87.65	203.8	
19	90.03	689	203.58	447.6	
20	90.77	729	180.05	374.4	
21	91.99	819	280.50	519.1	
22	92.86	883	246.89	423.6	
23	97.57	1,463	2,290.44	2,371.9	
24	101.45	2,078	3,496.95	2,550.0	
25	102.23	2,311	1,161.99	761.9	

Assay Class: High Sensitivity DNA Assay  
 Data Path: C:\...ents and Settings\Bioanalyzer\2014-03-19\2014-03-19\_006.xad

Created: 3/19/2014 3:14:14 PM  
 Modified: 3/19/2014 3:58:19 PM

### Electropherogram Summary Continued ...

#### ... Peak table for sample 6 : sample 6

Peak	Aligned Migration Time [s]	Size [bp]	Conc. [pg/μl]	Molarity [pmol/l]	Observations
26	103.98	2,828	930.20	498.3	
27	105.33	3,609	1,230.57	516.6	
28	107.68	5,464	5,398.10	1,496.9	
29	113.00	10,380	75.00	10.9	Upper Marker
30	114.26	11,648	0.00	0.0	
31	115.66	13,048	0.00	0.0	

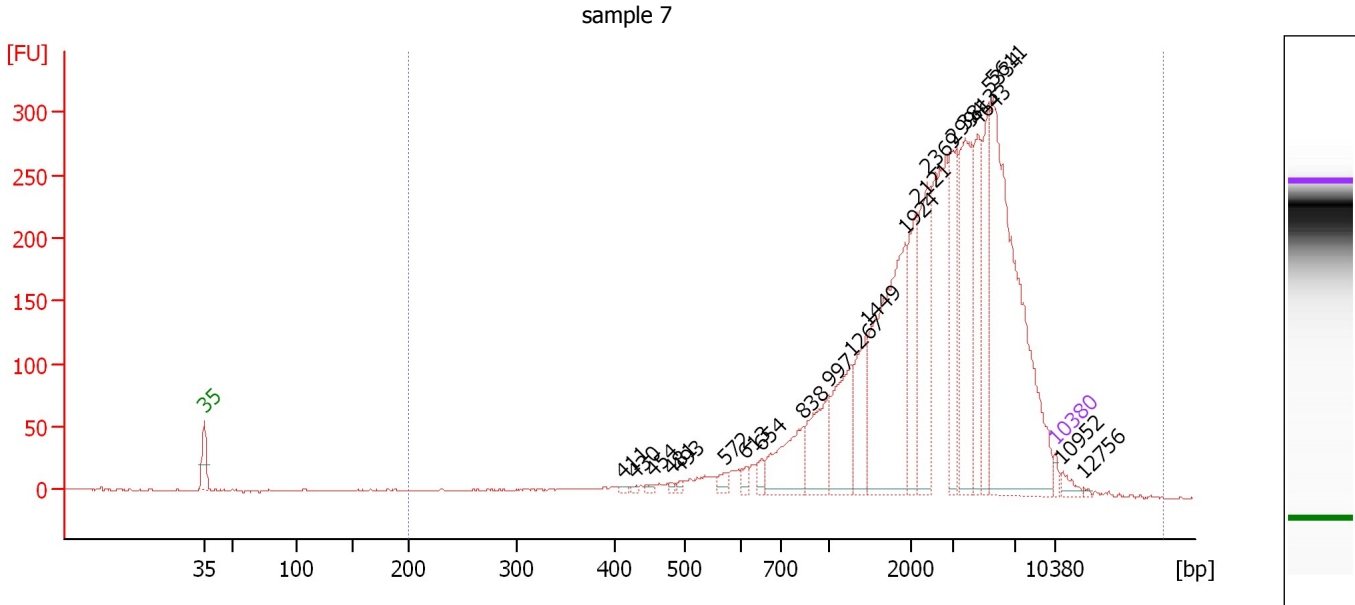
#### Region table for sample 6 : sample 6

From [bp]	To [bp]	Average Size [bp]	Molarity [pmol/l]	Conc. [pg/μl]	Co Corr. lor Area	% of Total	Size distribution in CV [%]
110	20,048	3,698	19,029.4	22,432.91	3,233.5	90	67.3

Assay Class: High Sensitivity DNA Assay  
 Data Path: C:\...ents and Settings\Bioanalyzer\2014-03-19\2014-03-19\_006.xad

Created: 3/19/2014 3:14:14 PM  
 Modified: 3/19/2014 3:58:19 PM

**Electropherogram Summary Continued ...**



**Overall Results for sample 7 : sample 7**

Number of peaks found: 22                      Corr. Area 1: 4,034.7  
 Noise: 0.7

**Peak table for sample 7 : sample 7**

Peak	Aligned Migration Time [s]	Size [bp]	Conc. [pg/μl]	Molarity [pmol/l]	Observations
1	43.00	35	125.00	5,411.3	Lower Marker
2	77.39	411	39.95	147.4	
3	78.48	430	32.30	113.9	
4	79.84	454	58.32	194.8	
5	81.42	481	46.58	146.7	
6	82.12	493	50.25	154.3	
7	85.85	572	115.98	307.1	
8	87.56	613	101.54	251.0	
9	88.88	654	148.97	345.4	
10	92.25	838	981.05	1,773.6	
11	94.40	997	935.32	1,422.0	
12	96.25	1,267	1,171.13	1,401.0	
13	97.47	1,449	857.29	896.6	
14	100.68	1,924	2,989.16	2,354.0	
15	101.60	2,121	996.23	711.5	
16	102.43	2,369	1,442.42	922.6	
17	104.54	2,994	1,051.30	532.1	
18	105.59	3,813	1,740.42	691.6	
19	106.64	4,643	1,215.61	396.7	
20	107.52	5,334	1,062.04	301.7	
21	107.87	5,611	4,587.94	1,239.0	
22	113.00	10,380	75.00	10.9	Upper Marker
23	113.57	10,952	0.00	0.0	
24	115.37	12,756	0.00	0.0	



Assay Class: High Sensitivity DNA Assay  
Data Path: C:\...ents and Settings\Bioanalyzer\2014-03-19\2014-03-19\_006.xad

Created: 3/19/2014 3:14:14 PM  
Modified: 3/19/2014 3:58:19 PM

**Electropherogram Summary Continued ...**

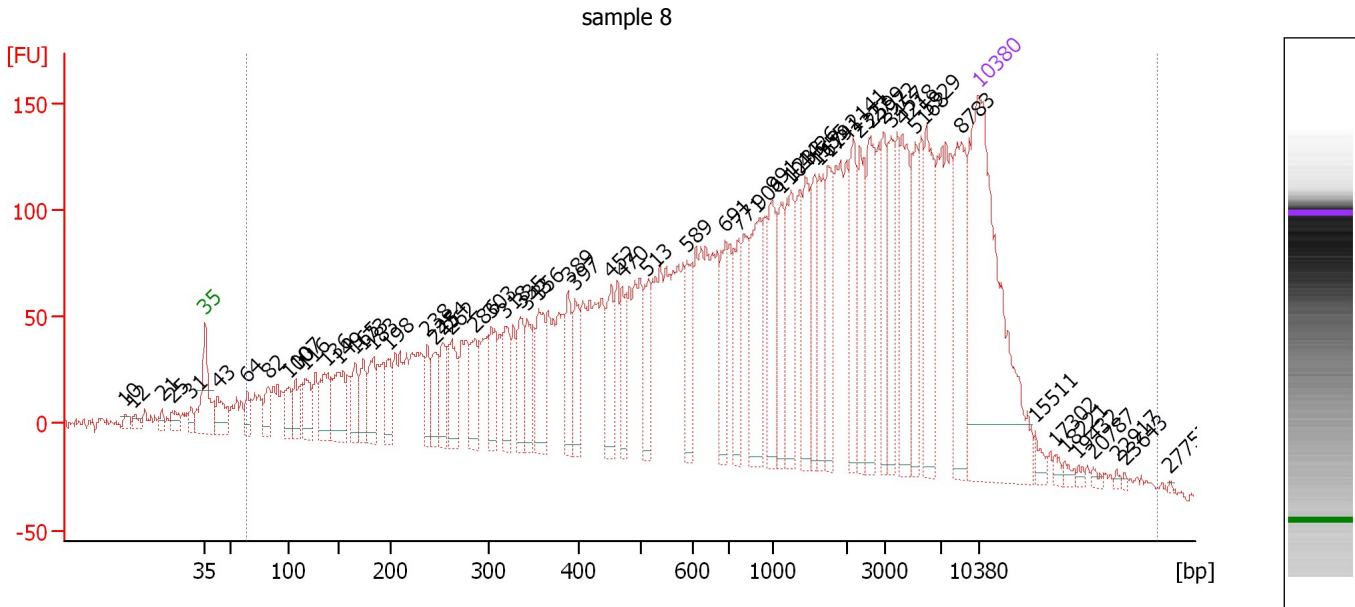
... Region table for sample 7 : sample 7

From [bp]	To [bp]	Average Size [bp]	Molarity [pmol/l]	Conc. [pg/ $\mu$ l]	Co Corr. lor Area	% of Total	Size distribution in CV [%]
200	19,232	3,547	20,232.9	23,475.97	 4,034.7	100	69.3

Assay Class: High Sensitivity DNA Assay  
 Data Path: C:\...ents and Settings\Bioanalyzer\2014-03-19\2014-03-19\_006.xad

Created: 3/19/2014 3:14:14 PM  
 Modified: 3/19/2014 3:58:19 PM

**Electropherogram Summary Continued ...**



**Overall Results for sample 8 : sample 8**

Number of peaks found: 60                      Corr. Area 1: 6,558.5  
 Noise: 3.4

**Peak table for sample 8 : sample 8**

Peak	Aligned Migration Time [s]	Size [bp]	Conc. [pg/μl]	Molarity [pmol/l]	Observations
1	35.81	10	0.00	0.0	
2	36.54	12	0.00	0.0	
3	39.14	21	0.00	0.0	
4	40.11	25	0.00	0.0	
5	41.79	31	0.00	0.0	
6	43.00	35	125.00	5,411.3	Lower Marker
7	44.21	43	12.21	430.6	
8	46.81	64	6.64	156.5	
9	48.69	82	8.92	165.3	
10	50.62	100	9.35	142.1	
11	51.25	107	9.27	131.8	
12	52.12	116	12.35	161.3	
13	53.95	136	17.29	192.4	
14	55.11	149	20.29	206.5	
15	56.60	165	10.46	95.8	
16	57.33	173	11.48	100.4	
17	58.24	183	13.98	115.5	
18	59.60	198	10.66	81.5	
19	63.17	238	10.15	64.6	
20	63.79	245	10.85	67.1	
21	64.56	254	10.64	63.5	
22	65.34	262	14.40	83.2	
23	67.46	286	13.75	72.9	
24	68.95	303	14.45	72.3	
25	70.21	318	14.31	68.1	

Assay Class: High Sensitivity DNA Assay  
 Data Path: C:\...ents and Settings\Bioanalyzer\2014-03-19\2014-03-19\_006.xad

Created: 3/19/2014 3:14:14 PM  
 Modified: 3/19/2014 3:58:19 PM

**Electropherogram Summary Continued ...**

**... Peak table for sample 8 : sample 8**

Peak	Aligned Migration Time [s]	Size [bp]	Conc. [pg/μl]	Molarity [pmol/l]	Observations
26	71.56	335	13.77	62.2	
27	72.19	343	11.78	52.0	
28	73.25	356	18.30	77.9	
29	75.90	389	11.58	45.1	
30	76.53	397	13.11	50.0	
31	79.76	452	14.29	47.9	
32	80.77	470	11.82	38.1	
33	83.09	513	13.82	40.9	
34	86.61	589	13.07	33.6	
35	90.08	691	16.03	35.2	
36	91.34	771	13.73	27.0	
37	93.17	906	24.81	41.5	
38	94.33	991	18.34	28.0	
39	95.15	1,104	14.03	19.3	
40	96.02	1,233	20.18	24.8	
41	97.32	1,426	16.44	17.5	
42	98.19	1,555	13.32	13.0	
43	98.62	1,619	15.26	14.3	
44	99.44	1,741	15.31	13.3	
45	101.66	2,141	16.49	11.7	
46	102.29	2,327	16.17	10.5	
47	103.21	2,599	18.65	10.9	
48	104.46	2,972	13.69	7.0	
49	105.14	3,457	13.68	6.0	
50	106.10	4,218	20.62	7.4	
51	107.31	5,168	14.23	4.2	
52	108.27	5,929	23.56	6.0	
53	111.41	8,783	24.28	4.2	
54	113.00	10,380	75.00	10.9	Upper Marker
55	118.11	15,511	0.00	0.0	
56	119.90	17,302	0.00	0.0	
57	120.82	18,221	0.00	0.0	
58	122.02	19,432	0.00	0.0	
59	123.37	20,787	0.00	0.0	
60	125.49	22,917	0.00	0.0	
61	126.22	23,643	0.00	0.0	
62	130.32	27,757	0.00	0.0	

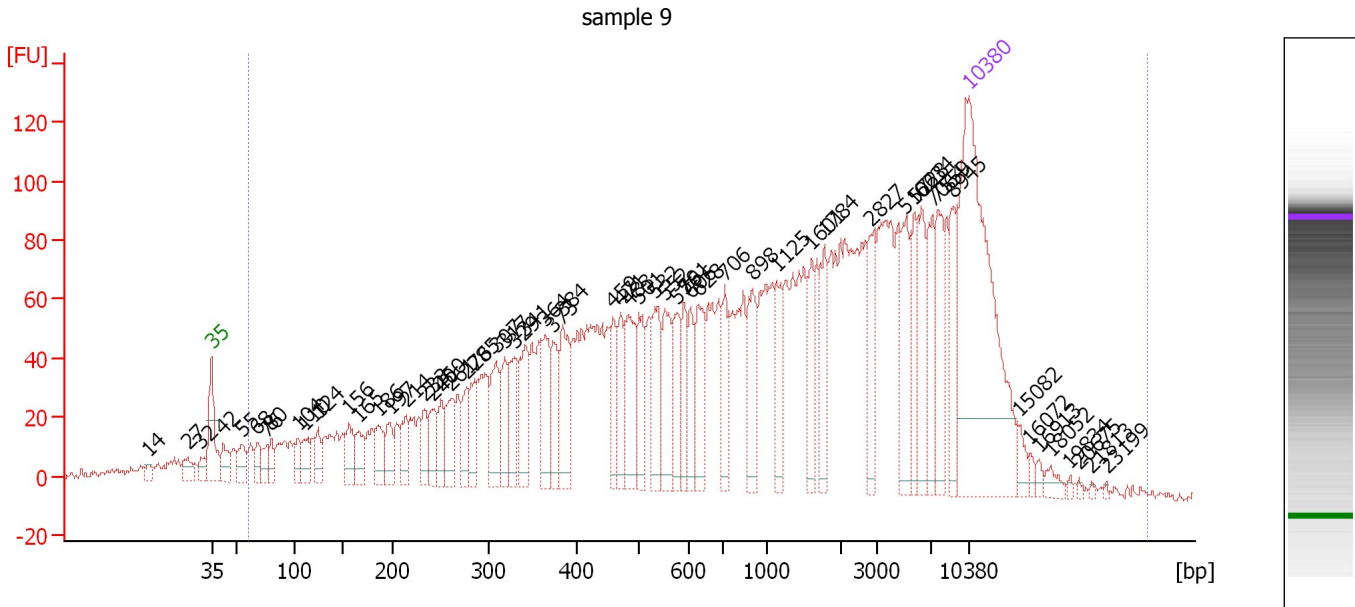
**Region table for sample 8 : sample 8**

From [bp]	To [bp]	Average Size [bp]	Molarity [pmol/l]	Conc. [pg/μl]	Co Corr. lor Area	% of Total	Size distribution in CV [%]
64	26,543	3,277	5,090.9	1,234.72	6,558.5	96	100.0

Assay Class: High Sensitivity DNA Assay  
 Data Path: C:\...ents and Settings\Bioanalyzer\2014-03-19\2014-03-19\_006.xad

Created: 3/19/2014 3:14:14 PM  
 Modified: 3/19/2014 3:58:19 PM

**Electropherogram Summary Continued ...**



**Overall Results for sample 9 : sample 9**

Number of peaks found: 59                      Corr. Area 1: 3,841.1  
 Noise: 1.2

**Peak table for sample 9 : sample 9**

Peak	Aligned Migration Time [s]	Size [bp]	Conc. [pg/μl]	Molarity [pmol/l]	Observations
1	37.13	14	0.00	0.0	
2	40.78	27	0.00	0.0	
3	42.06	32	0.00	0.0	
4	43.00	35	125.00	5,411.3	Lower Marker
5	44.09	42	7.87	282.9	
6	45.86	55	9.07	247.7	
7	47.24	68	6.09	135.2	
8	48.08	76	5.88	117.1	
9	48.53	80	6.36	120.2	
10	51.04	104	7.10	103.2	
11	51.58	110	8.82	121.3	
12	52.87	124	7.66	93.4	
13	55.73	156	10.62	103.3	
14	56.62	165	9.20	84.3	
15	58.44	186	9.63	78.6	
16	59.48	197	9.38	72.2	
17	61.01	214	10.08	71.4	
18	62.68	233	7.80	50.8	
19	63.37	240	9.85	62.1	
20	64.21	250	8.98	54.5	
21	65.20	261	11.95	69.4	
22	66.58	276	9.18	50.4	
23	67.37	285	12.84	68.3	
24	69.29	307	17.12	84.5	
25	70.13	317	11.80	56.3	

Assay Class: High Sensitivity DNA Assay  
 Data Path: C:\...ents and Settings\Bioanalyzer\2014-03-19\2014-03-19\_006.xad

Created: 3/19/2014 3:14:14 PM  
 Modified: 3/19/2014 3:58:19 PM

**Electropherogram Summary Continued ...**

**... Peak table for sample 9 : sample 9**

Peak	Aligned Migration Time [s]	Size [bp]	Conc. [pg/µl]	Molarity [pmol/l]	Observations
26	71.02	329	15.19	70.1	
27	72.06	341	18.16	80.6	
28	73.88	364	15.42	64.2	
29	74.57	373	12.94	52.6	
30	75.46	384	20.35	80.4	
31	80.15	459	11.63	38.4	
32	80.84	471	12.66	40.7	
33	81.53	483	19.84	62.2	
34	82.56	501	15.95	48.2	
35	83.99	532	16.75	47.7	
36	84.93	552	16.82	46.2	
37	86.02	576	13.14	34.6	
38	86.71	591	10.69	27.4	
39	87.35	606	10.31	25.8	
40	88.04	628	16.30	39.3	
41	90.46	706	11.21	24.1	
42	93.07	898	15.00	25.3	
43	95.29	1,125	12.45	16.8	
44	98.50	1,601	10.02	9.5	
45	99.73	1,784	11.68	9.9	
46	103.97	2,827	12.95	6.9	
47	107.23	5,106	15.70	4.7	
48	108.02	5,728	11.70	3.1	
49	108.66	6,234	14.35	3.5	
50	109.69	7,064	13.22	2.8	
51	110.19	7,559	14.21	2.8	
52	111.57	8,945	12.33	2.1	
53	113.00	10,380	75.00	10.9	Upper Marker
54	117.69	15,082	0.00	0.0	
55	118.67	16,072	0.00	0.0	
56	119.51	16,913	0.00	0.0	
57	120.65	18,052	0.00	0.0	
58	122.42	19,834	0.00	0.0	
59	123.26	20,675	0.00	0.0	
60	124.40	21,813	0.00	0.0	
61	125.78	23,199	0.00	0.0	

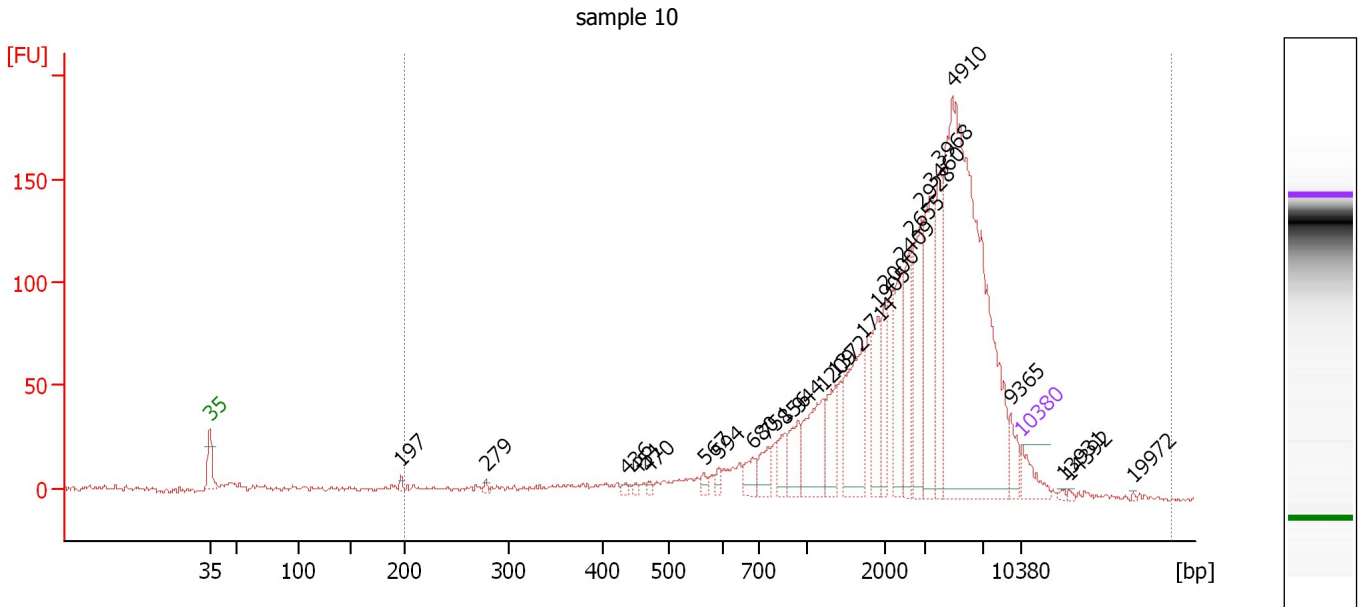
**Region table for sample 9 : sample 9**

From [bp]	To [bp]	Average Size [bp]	Molarity [pmol/l]	Conc. [pg/µl]	Co Corr. lor Area	% of Total	Size distribution in CV [%]
61	27,070	3,371	3,979.5	980.38	3,841.1	96	100.0

Assay Class: High Sensitivity DNA Assay  
 Data Path: C:\...ents and Settings\Bioanalyzer\2014-03-19\2014-03-19\_006.xad

Created: 3/19/2014 3:14:14 PM  
 Modified: 3/19/2014 3:58:19 PM

**Electropherogram Summary Continued ...**



**Overall Results for sample 10 : sample 10**

Number of peaks found: 26                      Corr. Area 1: 2,053.4  
 Noise: 1.2

**Peak table for sample 10 : sample 10**

Peak	Aligned Migration Time [s]	Size [bp]	Conc. [pg/μl]	Molarity [pmol/l]	Observations
1	43.00	35	125.00	5,411.3	Lower Marker
2	59.45	197	19.11	147.2	
3	66.81	279	12.12	65.9	
4	78.85	436	14.01	48.7	
5	79.72	451	12.47	41.9	
6	80.78	470	15.40	49.7	
7	85.61	567	24.60	65.8	
8	86.85	594	25.81	65.9	
9	89.74	680	69.17	154.1	
10	91.08	751	87.94	177.4	
11	92.50	856	79.19	140.1	
12	93.70	944	120.83	193.9	
13	95.86	1,209	252.69	316.8	
14	96.96	1,372	151.97	167.8	
15	99.26	1,714	330.82	292.5	
16	100.54	1,905	176.35	140.3	
17	101.19	2,000	137.93	104.5	
18	102.57	2,409	228.41	143.6	
19	103.39	2,655	183.59	104.8	
20	104.31	2,928	301.57	156.1	
21	105.14	3,460	315.82	138.3	
22	105.78	3,968	272.83	104.2	
23	106.98	4,910	1,738.77	536.6	
24	111.99	9,365	70.61	11.4	
25	113.00	10,380	75.00	10.9	Upper Marker

Assay Class: High Sensitivity DNA Assay  
 Data Path: C:\...ents and Settings\Bioanalyzer\2014-03-19\2014-03-19\_006.xad


Created: 3/19/2014 3:14:14 PM  
 Modified: 3/19/2014 3:58:19 PM

### Electropherogram Summary Continued ...

#### ... Peak table for sample 10 : sample 10

Peak	Aligned Migration Time [s]	Size [bp]	Conc. [pg/ $\mu$ l]	Molarity [pmol/l]	Observations
26	116.54	13,931	0.00	0.0	
27	117.00	14,392	0.00	0.0	
28	122.56	19,972	0.00	0.0	

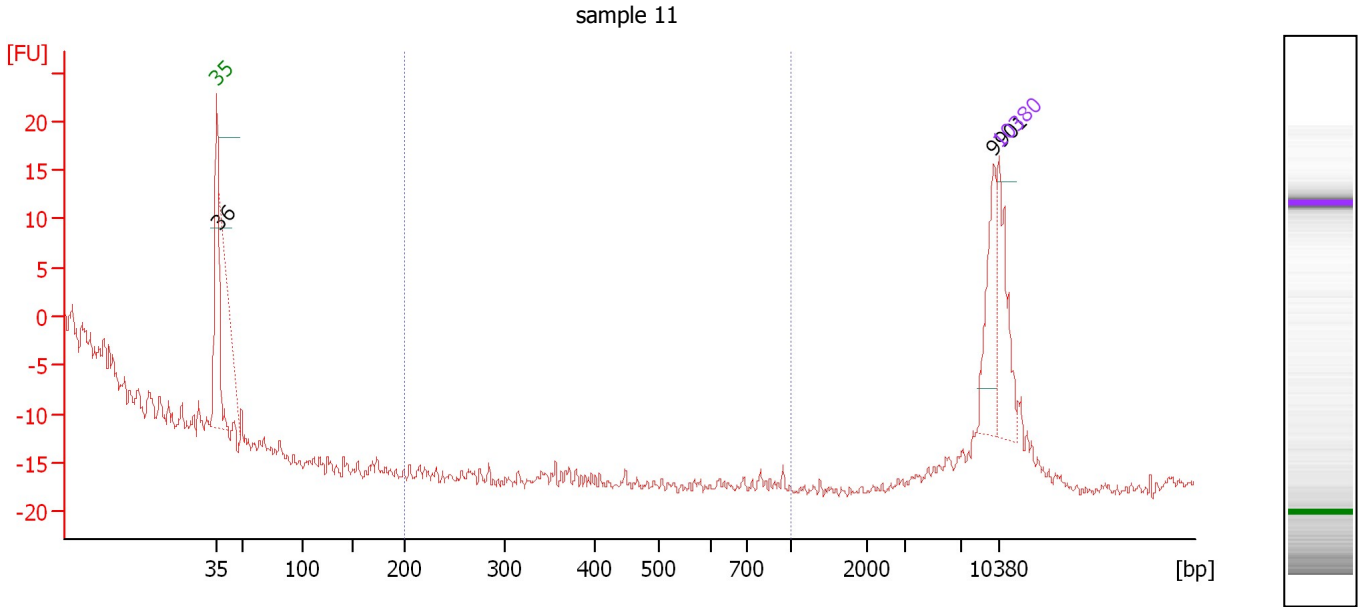
#### Region table for sample 10 : sample 10

From [bp]	To [bp]	Average Size [bp]	Molarity [pmol/l]	Conc. [pg/ $\mu$ l]	Co Corr. lor Area	% of Total	Size distribution in CV [%]
200	23,361	3,782	5,362.0	5,492.08	 2,053.4	97	71.7

Assay Class: High Sensitivity DNA Assay  
 Data Path: C:\...ents and Settings\Bioanalyzer\2014-03-19\2014-03-19\_006.xad

Created: 3/19/2014 3:14:14 PM  
 Modified: 3/19/2014 3:58:19 PM

**Electropherogram Summary Continued ...**



**Overall Results for sample 11 : sample 11**

Number of peaks found: 2                      Corr. Area 1: 0.0  
 Noise: 0.7

**Peak table for sample 11 : sample 11**

Peak	Aligned Migration Time [s]	Size [bp]	Conc. [pg/μl]	Molarity [pmol/l]	Observations
1	43.00	35	125.00	5,411.3	Lower Marker
2	43.19	36	0.22	9.1	
3	112.52	9,901	69.20	10.6	
4	113.00	10,380	75.00	10.9	Upper Marker

**Region table for sample 11 : sample 11**

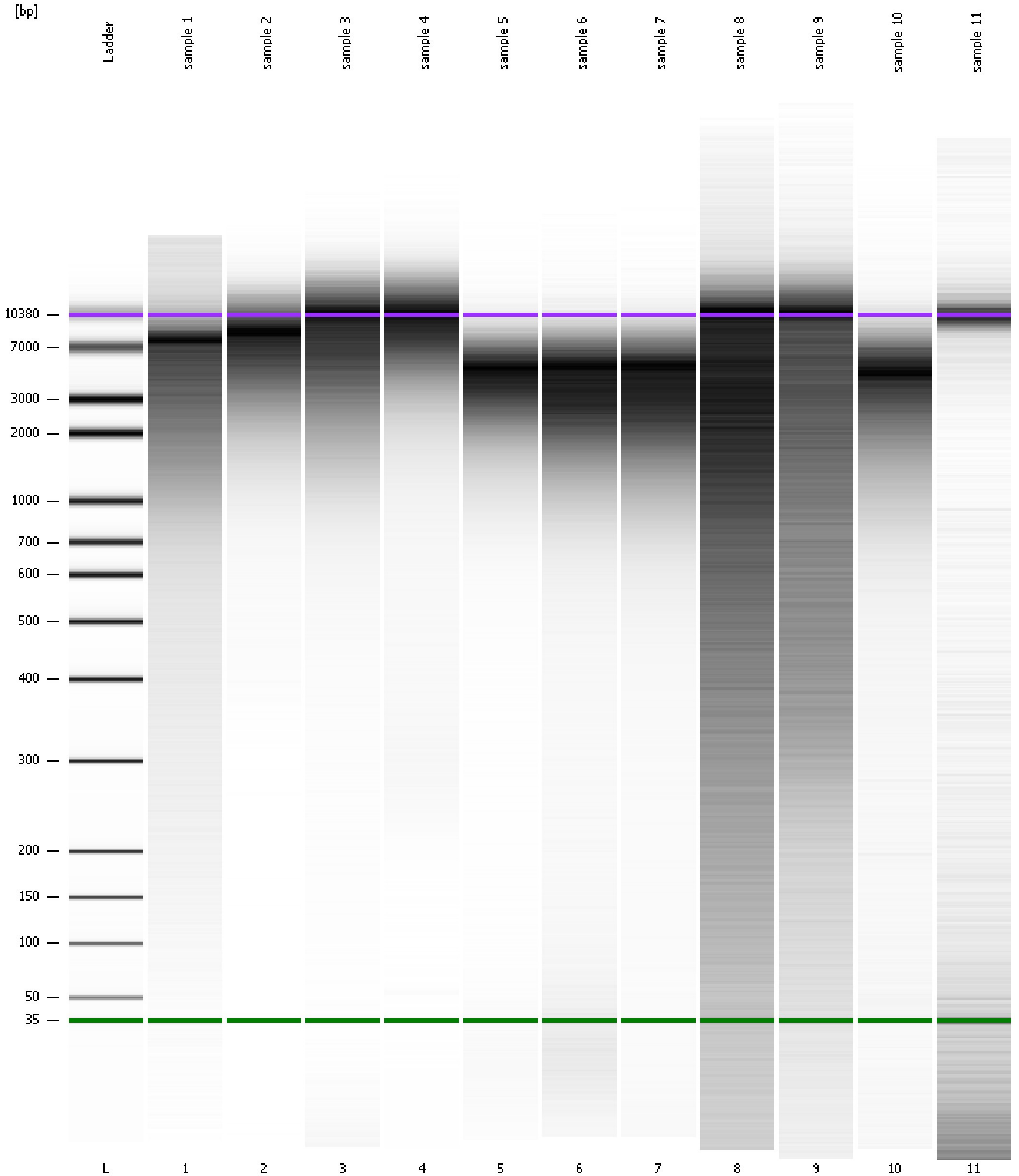
From [bp]	To [bp]	Average Size [bp]	Molarity [pmol/l]	Conc. [pg/μl]	Co Corr. lor Area	% of Total	Size distribution in CV [%]
200	1,000	0	0.0	0.00	0.0	0	0.0



Assay Class: High Sensitivity DNA Assay  
Data Path: C:\...ents and Settings\Bioanalyzer\2014-03-19\2014-03-19\_006.xad

Created: 3/19/2014 3:14:14 PM  
Modified: 3/19/2014 3:58:19 PM

**Gel Image**

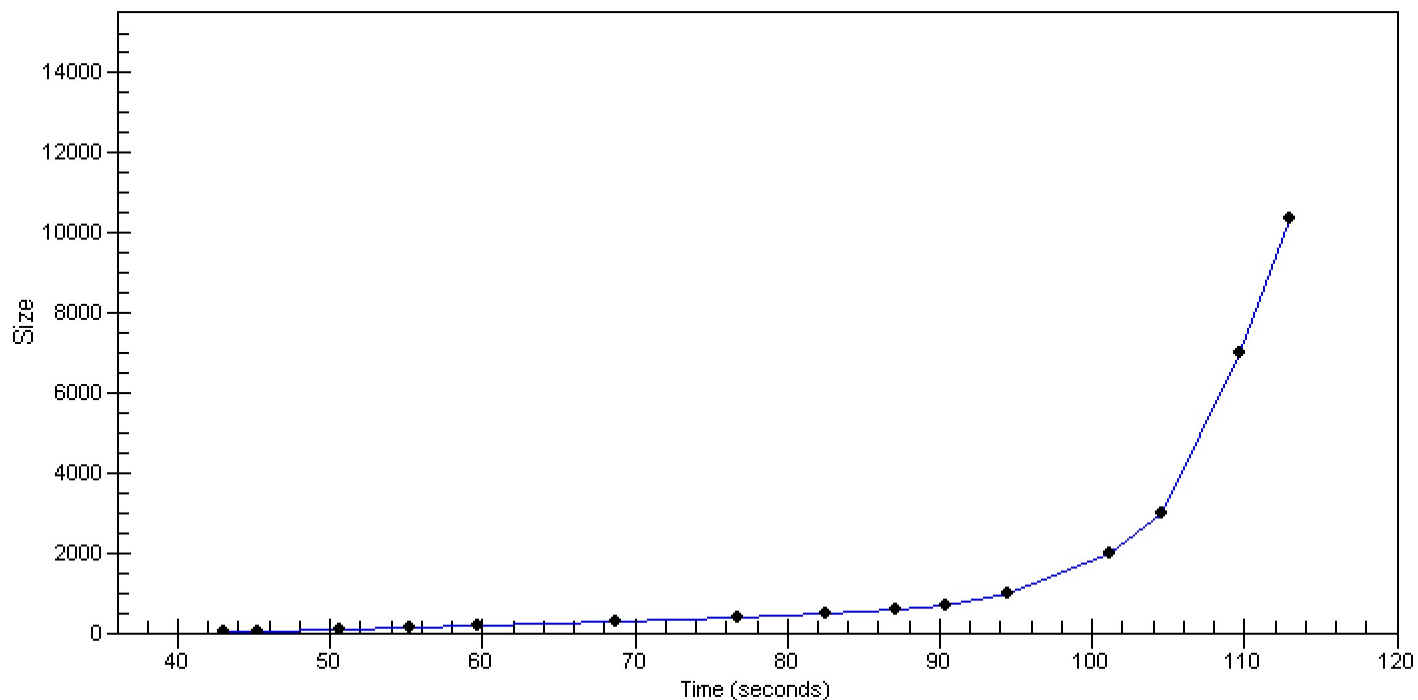


Assay Class: High Sensitivity DNA Assay  
Data Path: C:\...ents and Settings\Bioanalyzer\2014-03-19\2014-03-19\_006.xad

Created: 3/19/2014 3:14:14 PM  
Modified: 3/19/2014 3:58:19 PM

**Curves**

**Standard Curve**



Assay Class: High Sensitivity DNA Assay  
 Data Path: C:\...ents and Settings\Bioanalyzer\2014-03-19\2014-03-19\_006.xad

Created: 3/19/2014 3:14:14 PM  
 Modified: 3/19/2014 3:58:19 PM

**Run Logbook**

Description	Number	Source	Category	Sub Category	Time	Time Zone	User	Host
Run ended on port 1 (Number of wells acquired: 12)		Instrument	Run		3/19/2014 3:55:33 PM	(GMT --07:00) Pacific Standard Time	UC Davis	D8XSMGH1
Run started on port 1 (File: C:\Documents and Settings\Bioanalyzer\2014-03-19\2014-03-19_006.xad)		Instrument	Run		3/19/2014 3:14:19 PM	(GMT --07:00) Pacific Standard Time	UC Davis	D8XSMGH1
Product Number : G2938B		Instrument	Run		3/19/2014 3:14:19 PM	(GMT --07:00) Pacific Standard Time	UC Davis	D8XSMGH1
Name :		Instrument	Run		3/19/2014 3:14:19 PM	(GMT --07:00) Pacific Standard Time	UC Davis	D8XSMGH1
Vendor : Agilent Technologies		Instrument	Run		3/19/2014 3:14:19 PM	(GMT --07:00) Pacific Standard Time	UC Davis	D8XSMGH1
Serial# : DE13701086		Instrument	Run		3/19/2014 3:14:19 PM	(GMT --07:00) Pacific Standard Time	UC Davis	D8XSMGH1
Firmware : C.01.069		Instrument	Run		3/19/2014 3:14:19 PM	(GMT --07:00) Pacific Standard Time	UC Davis	D8XSMGH1
Cartridge : Electrode		Instrument	Run		3/19/2014 3:14:19 PM	(GMT --07:00) Pacific Standard Time	UC Davis	D8XSMGH1