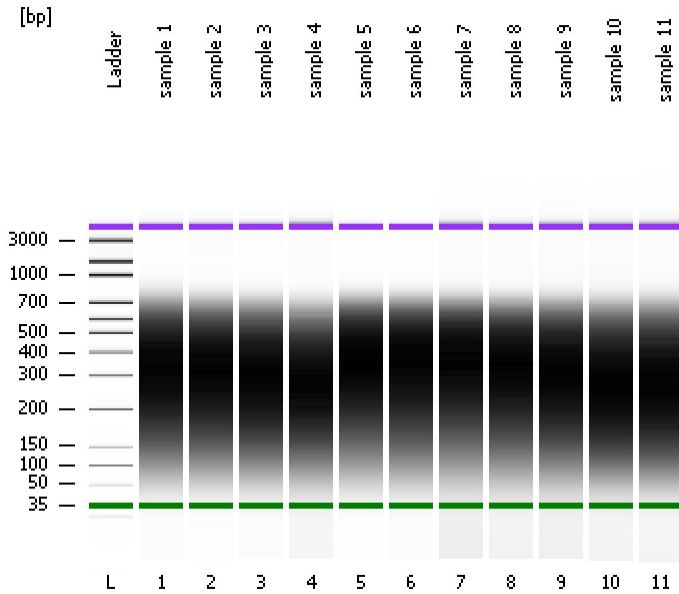


Assay Class: High Sensitivity DNA Assay  
Data Path: C:\...ents and Settings\Bioanalyzer\2014-04-21\2014-04-21\_001.xad

Created: 4/21/2014 9:37:27 AM  
Modified: 4/21/2014 10:19:13 AM

**Electrophoresis File Run Summary**



Instrument Information:

Instrument Name: DE13701086      Firmware: C.01.069  
Serial#: DE13701086      Type: G2938B

Assay Information:

Assay Origin Path: C:\Program Files\Agilent\2100 bioanalyzer\2100 expert\assays\dsDNA\High Sensitivity DNA.xsy  
Assay Class: High Sensitivity DNA Assay  
Version: 1.03  
Assay Comments: Copyright © 2003-2010 Agilent Technologies

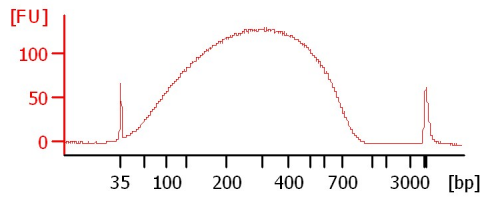
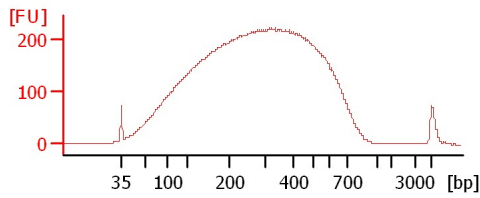
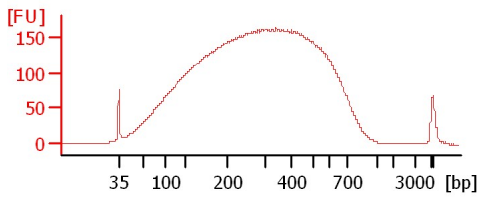
Chip Information:

Chip Lot #:      Reagent Kit Lot #:      Chip Comments:

sample 1

sample 2

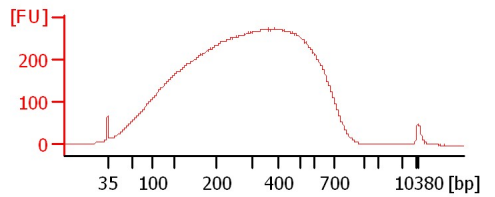
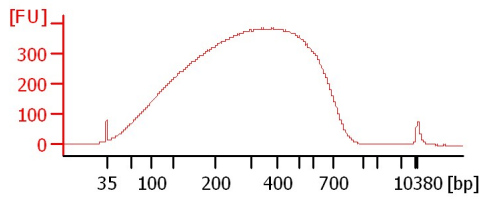
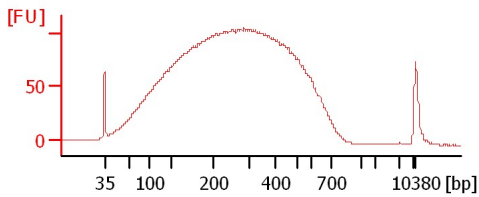
sample 3



sample 4

sample 5

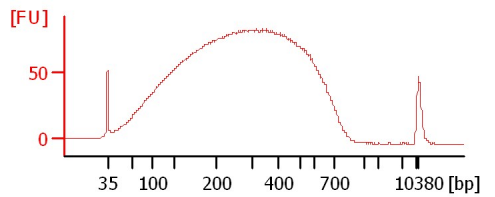
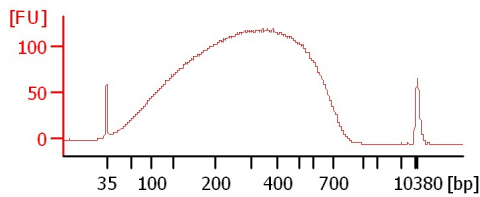
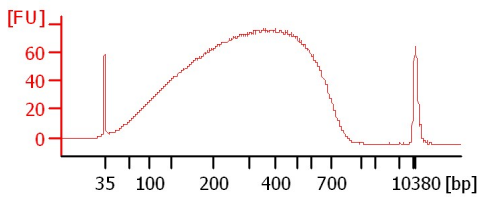
sample 6



sample 7

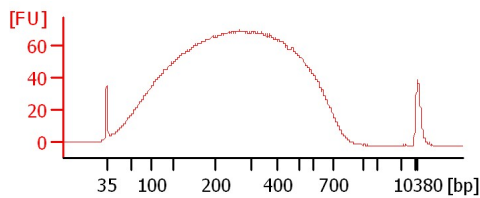
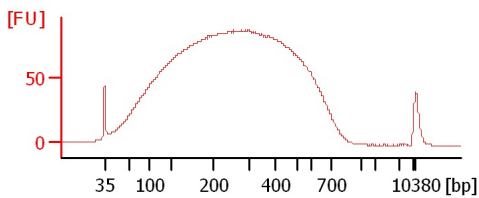
sample 8

sample 9



sample 10

sample 11



Assay Class: High Sensitivity DNA Assay  
 Data Path: C:\...ents and Settings\Bioanalyzer\2014-04-21\2014-04-21\_001.xad

Created: 4/21/2014 9:37:27 AM  
 Modified: 4/21/2014 10:19:13 AM

**Electrophoresis File Run Summary (Chip Summary)**

Sample Name	Sample Comment	Rest. Digest	Status	Observation	Result Label	Result Color
sample 1		<input type="checkbox"/>	✓			
sample 2		<input type="checkbox"/>	✓			
sample 3		<input type="checkbox"/>	✓			
sample 4		<input type="checkbox"/>	✓			
sample 5		<input type="checkbox"/>	✓			
sample 6		<input type="checkbox"/>	✓			
sample 7		<input type="checkbox"/>	✓			
sample 8		<input type="checkbox"/>	✓			
sample 9		<input type="checkbox"/>	✓			
sample 10		<input type="checkbox"/>	✓			
sample 11		<input type="checkbox"/>	✓			
Ladder		<input type="checkbox"/>	✓			

**Chip Lot #**

**Reagent Kit Lot #**

**Chip Comments :**

Assay Class: High Sensitivity DNA Assay  
 Data Path: C:\...ents and Settings\Bioanalyzer\2014-04-21\2014-04-21\_001.xad

Created: 4/21/2014 9:37:27 AM  
 Modified: 4/21/2014 10:19:13 AM

**Electrophoresis Assay Details**

**General Analysis Settings**

Number of Available Sample and Ladder Wells (Max.) : 12  
 Minimum Visible Range [s] : 32  
 Maximum Visible Range [s] : 138  
 Start Analysis Time Range [s] : 33  
 End Analysis Time Range [s] : 137.5  
 Ladder Concentration [pg/μl] : 1950  
 Uses Standard Area for Ladder Fragments  
 Lower Marker Concentration [pg/μl] : 125  
 Upper Marker Concentration [pg/μl] : 75  
 Used Upper Marker for Quantitation  
 Standard Curve Fit is Point to Point  
 Show Data Aligned to Lower and Upper Marker

**Integrator Settings**

Integration Start Time [s] : 33.05  
 Integration End Time [s] : 137  
 Slope Threshold : 0.8  
 Height Threshold [FU] : 5  
 Area Threshold : 0.1  
 Width Threshold [s] : 0.6  
 Baseline Plateau [s] : 0.5

**Filter Settings**

Filter Width [s] : 0.5  
 Polynomial Order : 4

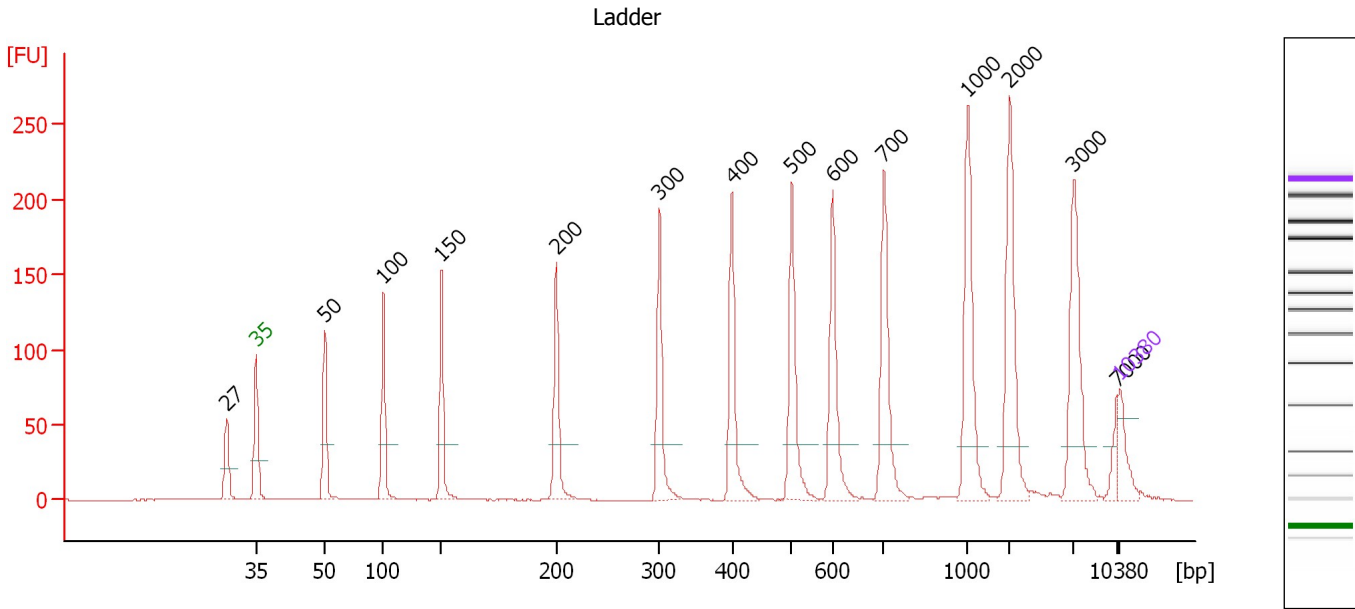
**Ladder**

Ladder Peak	Size	Area
1	35	160
2	50	210
3	100	208
4	150	221
5	200	242
6	300	270
7	400	305
8	500	306
9	600	336
10	700	321
11	1000	366
12	2000	413
13	3000	411
14	7000	400
15	10380	214

Assay Class: High Sensitivity DNA Assay  
 Data Path: C:\...ents and Settings\Bioanalyzer\2014-04-21\2014-04-21\_001.xad

Created: 4/21/2014 9:37:27 AM  
 Modified: 4/21/2014 10:19:13 AM

**Electropherogram Summary**



**Overall Results for Ladder**

Noise: 0.2

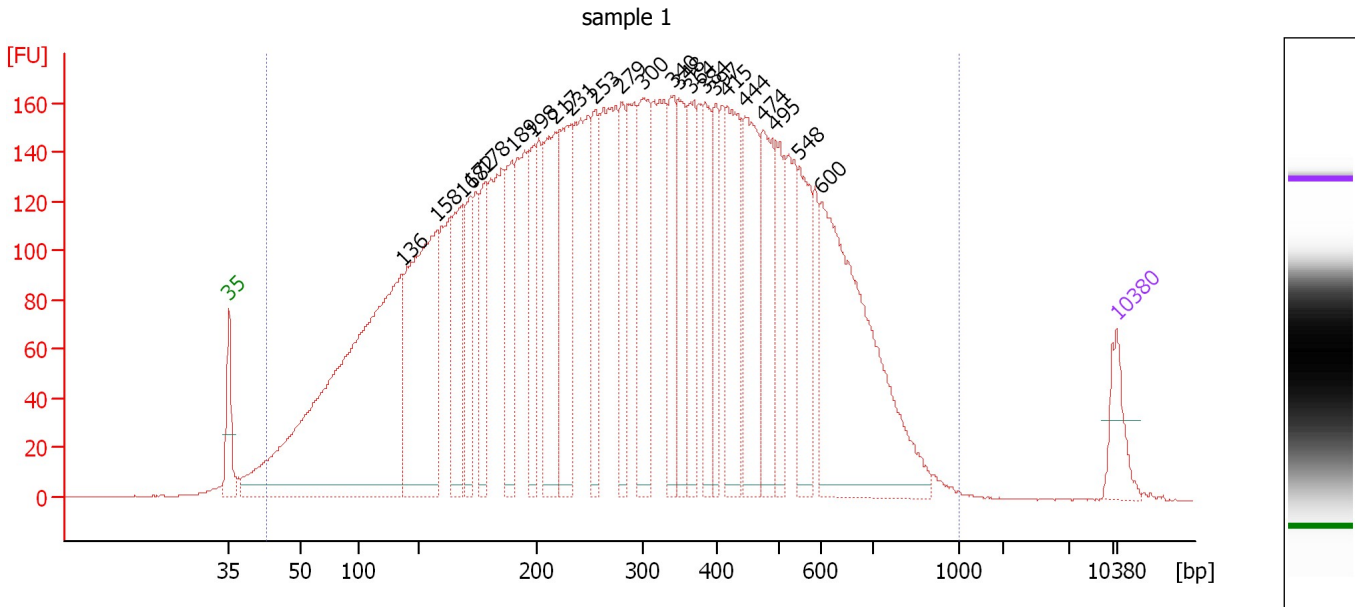
**Peak table for Ladder**

Peak	Aligned Migration Time [s]	Size [bp]	Conc. [pg/μl]	Molarity [pmol/l]	Observations
1	40.58	27	0.00	0.0	
2	43.00	35	125.00	5,411.3	Lower Marker
3	48.57	50	150.00	4,545.5	Ladder Peak
4	53.28	100	150.00	2,272.7	Ladder Peak
5	57.99	150	150.00	1,515.2	Ladder Peak
6	67.33	200	150.00	1,136.4	Ladder Peak
7	75.67	300	150.00	757.6	Ladder Peak
8	81.54	400	150.00	568.2	Ladder Peak
9	86.38	500	150.00	454.5	Ladder Peak
10	89.71	600	150.00	378.8	Ladder Peak
11	93.86	700	150.00	324.7	Ladder Peak
12	100.64	1,000	150.00	227.3	Ladder Peak
13	104.06	2,000	150.00	113.6	Ladder Peak
14	109.20	3,000	150.00	75.8	Ladder Peak
15	112.70	7,000	150.00	32.5	Ladder Peak
16	113.00	10,380	75.00	10.9	Upper Marker

Assay Class: High Sensitivity DNA Assay  
 Data Path: C:\...ents and Settings\Bioanalyzer\2014-04-21\2014-04-21\_001.xad

Created: 4/21/2014 9:37:27 AM  
 Modified: 4/21/2014 10:19:13 AM

**Electropherogram Summary Continued ...**



**Overall Results for sample 1 : sample 1**

Number of peaks found: 23                      Corr. Area 1: 8,462.9  
 Noise: 0.2

**Peak table for sample 1 : sample 1**


Peak	Aligned Migration Time [s]	Size [bp]	Conc. [pg/μl]	Molarity [pmol/l]	Observations
1	43.00	35	125.00	5,411.3	Lower Marker
2	56.67	136	1,978.14	22,043.5	
3	59.41	158	889.64	8,554.7	
4	61.43	168	326.78	2,940.4	
5	62.06	172	242.46	2,138.7	
6	63.15	178	231.82	1,977.4	
7	65.30	189	280.76	2,249.4	
8	67.02	198	235.61	1,799.7	
9	68.75	217	462.15	3,226.8	
10	69.92	231	428.46	2,808.7	
11	71.77	253	241.69	1,445.6	
12	73.92	279	203.60	1,105.5	
13	75.69	300	364.53	1,839.0	
14	78.00	340	233.91	1,043.3	
15	78.50	348	241.09	1,048.8	
16	79.43	364	220.41	917.3	
17	80.61	384	222.51	877.8	
18	81.37	397	148.12	565.3	
19	82.25	415	343.47	1,255.3	
20	83.68	444	358.34	1,222.5	
21	85.11	474	278.66	891.3	
22	86.12	495	189.89	581.8	
23	87.97	548	227.50	629.3	
24	89.69	600	784.15	1,981.7	
25	113.00	10,380	75.00	10.9	Upper Marker

Assay Class: High Sensitivity DNA Assay  
Data Path: C:\...ents and Settings\Bioanalyzer\2014-04-21\2014-04-21\_001.xad

Created: 4/21/2014 9:37:27 AM  
Modified: 4/21/2014 10:19:13 AM

**Electropherogram Summary Continued ...**

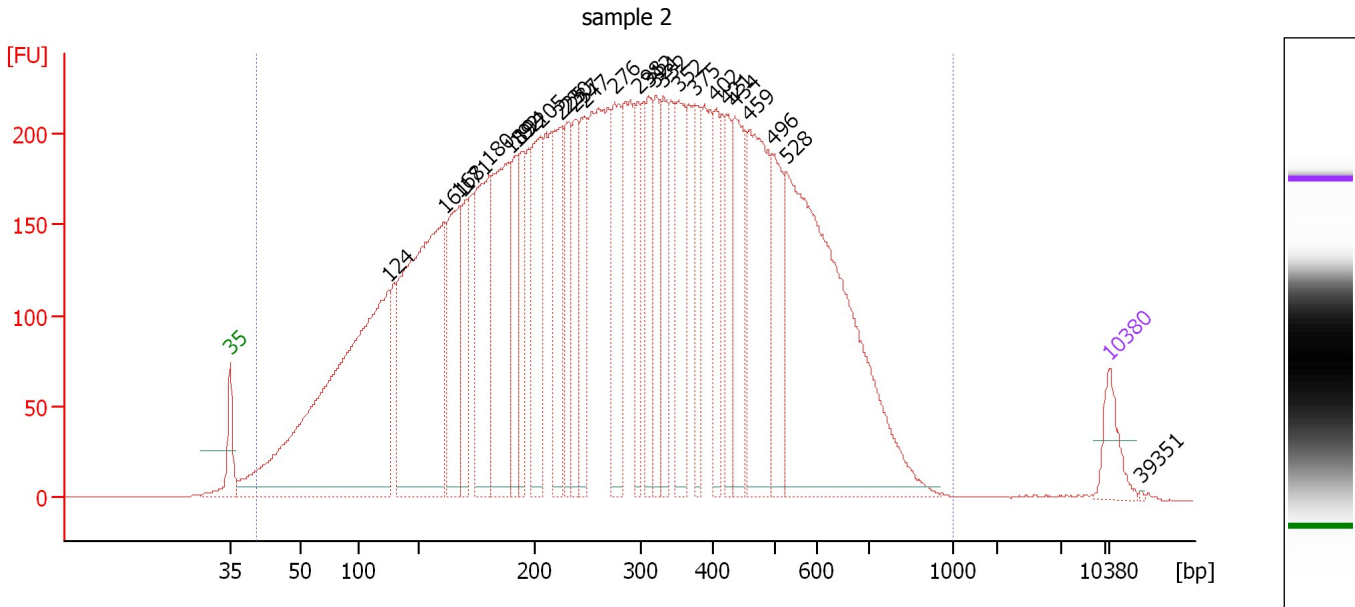
... Region table for sample 1 : sample 1

From [bp]	To [bp]	Average Size [bp]	Molarity [pmol/l]	Conc. [pg/ $\mu$ l]	Co Corr. lor Area	% of Total	Size distribution in CV [%]
43	1,000	325	105,101.6	13,345.58	 8,462.9	99	54.3

Assay Class: High Sensitivity DNA Assay  
 Data Path: C:\...ents and Settings\Bioanalyzer\2014-04-21\2014-04-21\_001.xad

Created: 4/21/2014 9:37:27 AM  
 Modified: 4/21/2014 10:19:13 AM

**Electropherogram Summary Continued ...**



**Overall Results for sample 2 : sample 2**

Number of peaks found: 27                      Corr. Area 1: 11,272.5  
 Noise: 0.2

**Peak table for sample 2 : sample 2**

Peak	Aligned Migration Time [s]	Size [bp]	Conc. [pg/μl]	Molarity [pmol/l]	Observations
1	43.00	35	125.00	5,411.3	Lower Marker
2	55.58	124	2,039.44	24,843.8	
3	60.04	161	1,450.46	13,651.9	
4	61.28	168	504.44	4,560.8	
5	61.87	171	231.04	2,049.9	
6	63.61	180	557.51	4,690.1	
7	65.31	189	668.63	5,354.2	
8	65.87	192	257.95	2,033.8	
9	66.21	194	240.96	1,882.0	
10	67.74	205	423.92	3,134.7	
11	69.39	225	344.73	2,323.7	
12	69.82	230	254.44	1,677.1	
13	70.41	237	252.14	1,611.9	
14	71.22	247	283.62	1,742.0	
15	73.69	276	343.25	1,882.6	
16	75.51	298	213.50	1,084.9	
17	76.36	312	226.05	1,098.2	
18	76.92	321	205.84	970.8	
19	77.55	332	216.44	987.4	
20	78.74	352	308.75	1,327.6	
21	80.06	375	181.97	735.6	
22	81.63	402	183.75	692.8	
23	82.57	421	166.45	598.8	
24	83.21	434	323.70	1,129.1	
25	84.40	459	549.39	1,813.7	

Assay Class: High Sensitivity DNA Assay  
 Data Path: C:\...ents and Settings\Bioanalyzer\2014-04-21\2014-04-21\_001.xad

Created: 4/21/2014 9:37:27 AM  
 Modified: 4/21/2014 10:19:13 AM

### Electropherogram Summary Continued ...

#### ... Peak table for sample 2 : sample 2

Peak	Aligned Migration Time [s]	Size [bp]	Conc. [pg/ $\mu$ l]	Molarity [pmol/l]	Observations
26	86.18	496	256.60	784.1	
27	87.33	528	1,385.61	3,972.8	
28	113.00	10,380	75.00	10.9	Upper Marker
29	115.59	39,351	0.00	0.0	

#### Region table for sample 2 : sample 2

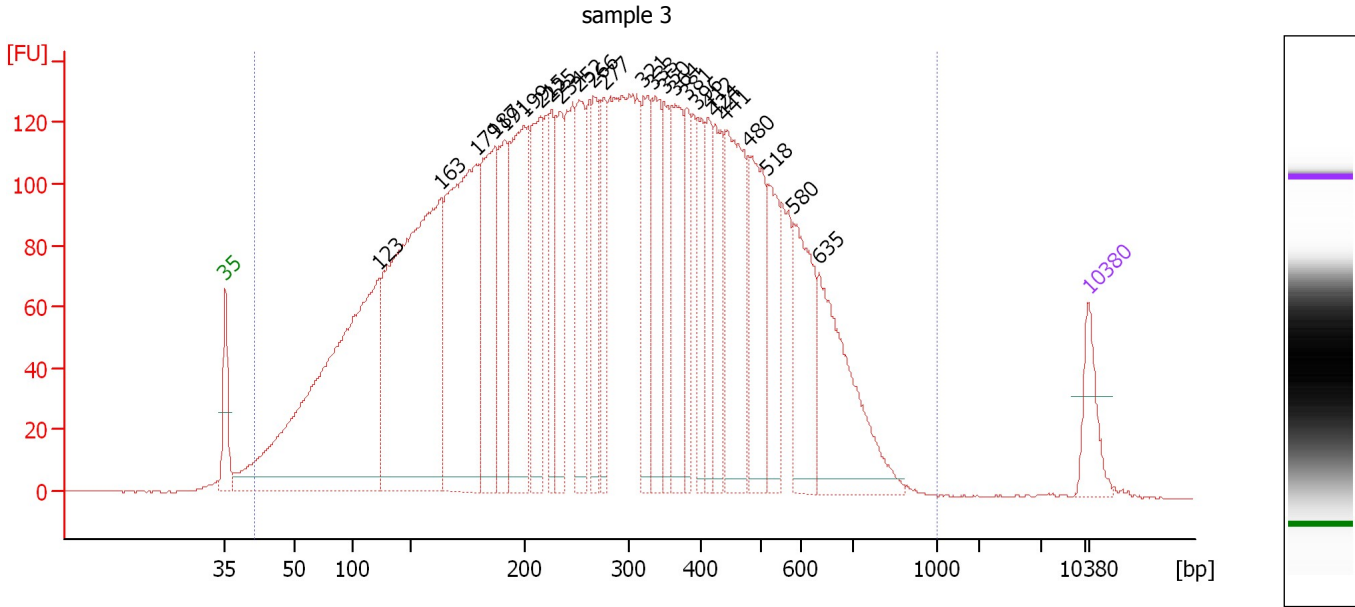
From [bp]	To [bp]	Average Size [bp]	Molarity [pmol/l]	Conc. [pg/ $\mu$ l]	Co Corr. for Area	% of Total	Size distribution in CV [%]
40	1,000	317	124,280.7	15,446.70	11,272.5	99	53.6



Assay Class: High Sensitivity DNA Assay  
 Data Path: C:\...ents and Settings\Bioanalyzer\2014-04-21\2014-04-21\_001.xad

Created: 4/21/2014 9:37:27 AM  
 Modified: 4/21/2014 10:19:13 AM

**Electropherogram Summary Continued ...**



**Overall Results for sample 3 : sample 3**

Number of peaks found: 25                      Corr. Area 1: 6,634.9  
 Noise: 0.2

**Peak table for sample 3 : sample 3**

Peak	Aligned Migration Time [s]	Size [bp]	Conc. [pg/μl]	Molarity [pmol/l]	Observations
1	43.00	35	125.00	5,411.3	Lower Marker
2	55.50	123	1,600.60	19,640.6	
3	60.51	163	1,482.84	13,742.8	
4	63.36	179	963.89	8,169.3	
5	64.83	187	472.33	3,834.2	
6	65.66	191	343.64	2,725.3	
7	67.21	199	533.88	4,057.0	
8	68.60	215	352.85	2,484.1	
9	69.42	225	190.63	1,283.3	
10	70.15	234	229.47	1,486.6	
11	71.62	252	297.83	1,794.2	
12	72.83	266	207.68	1,182.8	
13	73.74	277	175.72	961.5	
14	76.90	321	258.87	1,222.1	
15	77.59	333	240.09	1,093.3	
16	78.58	350	160.40	695.1	
17	79.45	364	254.64	1,058.9	
18	80.44	381	148.56	590.3	
19	81.31	396	141.15	540.1	
20	82.13	412	148.38	545.5	
21	82.69	424	153.75	549.8	
22	83.51	441	393.71	1,353.6	
23	85.42	480	283.57	895.1	
24	86.97	518	184.63	540.3	
25	89.05	580	263.19	687.5	

Assay Class: High Sensitivity DNA Assay  
 Data Path: C:\...ents and Settings\Bioanalyzer\2014-04-21\2014-04-21\_001.xad

Created: 4/21/2014 9:37:27 AM  
 Modified: 4/21/2014 10:19:13 AM

### Electropherogram Summary Continued ...

#### ... Peak table for sample 3 : sample 3

Peak	Aligned Migration Time [s]	Size [bp]	Conc. [pg/ $\mu$ l]	Molarity [pmol/l]	Observations
26	91.17	635	361.17	861.7	
27	113.00	10,380	75.00	10.9	Upper Marker

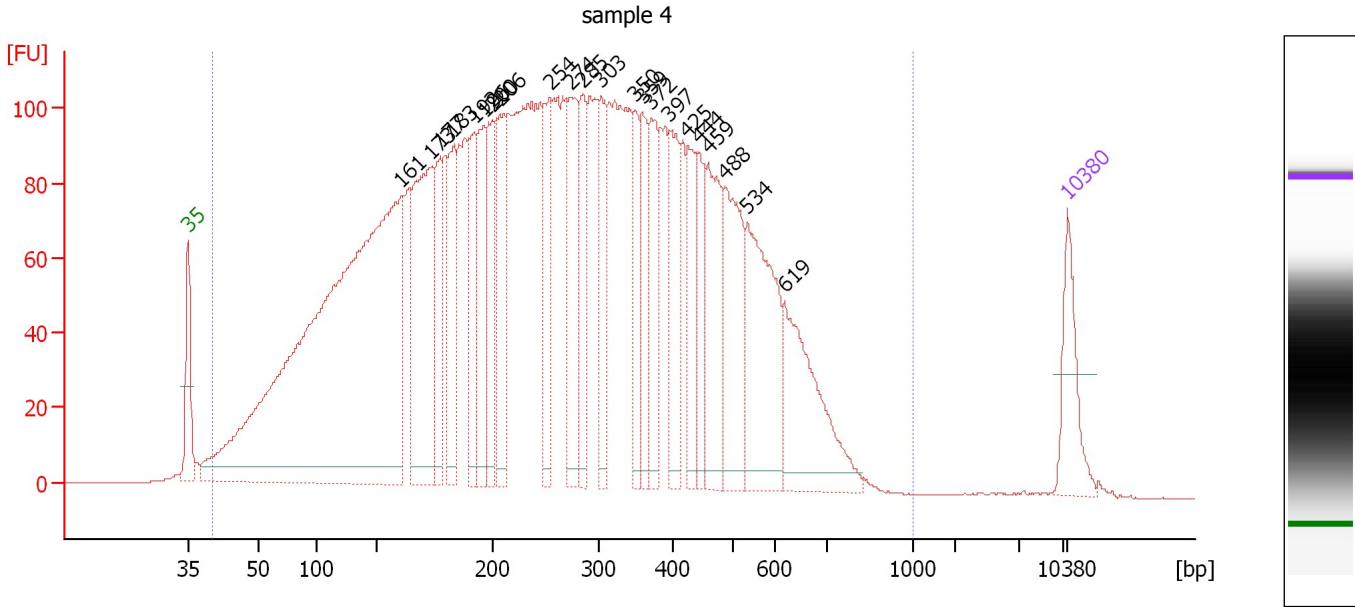
#### Region table for sample 3 : sample 3

From [bp]	To [bp]	Average Size [bp]	Molarity [pmol/l]	Conc. [pg/ $\mu$ l]	Co Corr. lor Area	% of Total	Size distribution in CV [%]
41	1,000	309	97,962.0	11,996.48	6,634.9	99	53.6

Assay Class: High Sensitivity DNA Assay  
 Data Path: C:\...ents and Settings\Bioanalyzer\2014-04-21\2014-04-21\_001.xad

Created: 4/21/2014 9:37:27 AM  
 Modified: 4/21/2014 10:19:13 AM

**Electropherogram Summary Continued ...**



**Overall Results for sample 4 : sample 4**

Number of peaks found: 22                      Corr. Area 1: 5,265.3  
 Noise: 0.2

**Peak table for sample 4 : sample 4**


Peak	Aligned Migration Time [s]	Size [bp]	Conc. [pg/μl]	Molarity [pmol/l]	Observations
1	43.00	35	125.00	5,411.3	Lower Marker
2	59.99	161	1,843.33	17,378.3	
3	62.28	173	411.56	3,605.0	
4	63.08	177	144.22	1,233.0	
5	64.09	183	176.35	1,462.9	
6	65.76	192	156.27	1,235.7	
7	66.55	196	166.41	1,287.3	
8	67.26	200	176.55	1,340.0	
9	67.83	206	187.80	1,381.0	
10	71.84	254	155.03	924.5	
11	73.51	274	205.61	1,136.4	
12	74.39	285	137.09	729.6	
13	75.84	303	131.21	656.1	
14	78.62	350	107.80	466.4	
15	79.14	359	112.14	473.1	
16	79.89	372	136.91	557.7	
17	81.35	397	139.34	532.3	
18	82.75	425	112.09	399.6	
19	83.68	444	95.99	327.4	
20	84.38	459	174.20	575.4	
21	85.79	488	192.34	597.4	
22	87.51	534	264.46	750.5	
23	90.50	619	210.02	514.0	
24	113.00	10,380	75.00	10.9	Upper Marker

Assay Class: High Sensitivity DNA Assay  
Data Path: C:\...ents and Settings\Bioanalyzer\2014-04-21\2014-04-21\_001.xad

Created: 4/21/2014 9:37:27 AM  
Modified: 4/21/2014 10:19:13 AM

**Electropherogram Summary Continued ...**

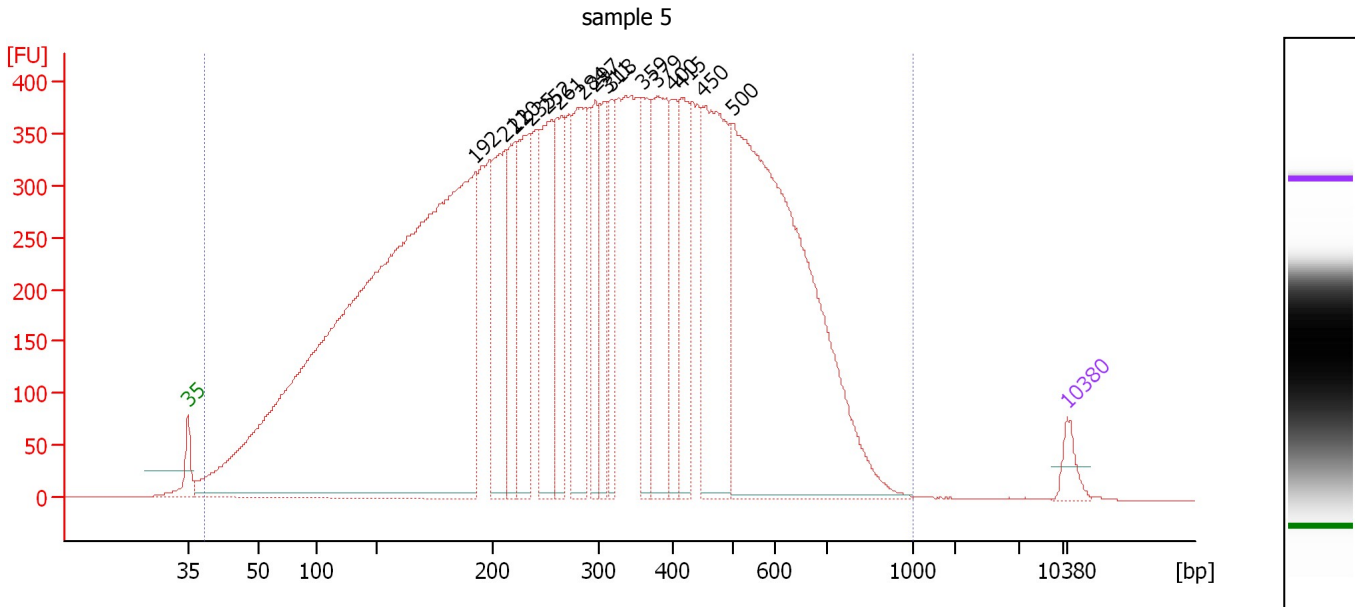
... Region table for sample 4 : sample 4

From [bp]	To [bp]	Average Size [bp]	Molarity [pmol/l]	Conc. [pg/μl]	Co Corr. lor Area	% of Total	Size distribution in CV [%]
40	1,000	296	67,038.8	7,981.85	 5,265.3	99	52.9

Assay Class: High Sensitivity DNA Assay  
 Data Path: C:\...ents and Settings\Bioanalyzer\2014-04-21\2014-04-21\_001.xad

Created: 4/21/2014 9:37:27 AM  
 Modified: 4/21/2014 10:19:13 AM

**Electropherogram Summary Continued ...**



**Overall Results for sample 5 : sample 5**

Number of peaks found: 16      Corr. Area 1: 19,221.3  
 Noise: 0.1

**Peak table for sample 5 : sample 5**

Peak	Aligned Migration Time [s]	Size [bp]	Conc. [pg/μl]	Molarity [pmol/l]	Observations
1	43.00	35	125.00	5,411.3	Lower Marker
2	65.86	192	8,980.83	70,810.7	
3	68.22	211	960.62	6,906.2	
4	68.99	220	587.08	4,043.3	
5	70.22	235	818.24	5,282.7	
6	71.63	252	883.21	5,319.8	
7	72.44	261	675.73	3,917.6	
8	74.35	284	820.83	4,376.3	
9	75.44	297	420.55	2,143.7	
10	76.30	311	473.84	2,310.3	
11	76.71	318	407.55	1,943.6	
12	79.16	359	551.09	2,323.3	
13	80.34	379	892.74	3,564.6	
14	81.52	400	428.40	1,624.6	
15	82.29	415	555.31	2,025.6	
16	83.97	450	1,274.27	4,289.9	
17	86.37	500	3,698.06	11,212.1	
18	113.00	10,380	75.00	10.9	Upper Marker

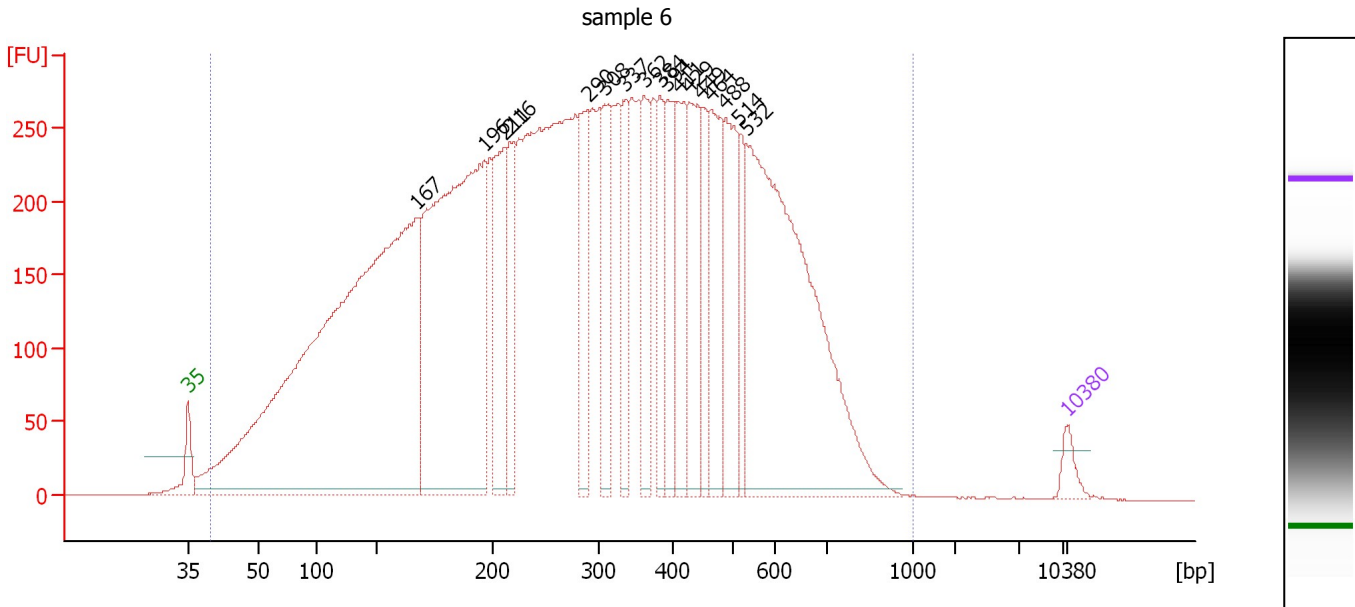
**Region table for sample 5 : sample 5**

From [bp]	To [bp]	Average Size [bp]	Molarity [pmol/l]	Conc. [pg/μl]	Co Corr. lor Area	% of Total	Size distribution in CV [%]
38	1,000	330	219,995.0	27,944.82	19,221.3	100	53.2

Assay Class: High Sensitivity DNA Assay  
 Data Path: C:\...ents and Settings\Bioanalyzer\2014-04-21\2014-04-21\_001.xad

Created: 4/21/2014 9:37:27 AM  
 Modified: 4/21/2014 10:19:13 AM

**Electropherogram Summary Continued ...**



**Overall Results for sample 6 : sample 6**

Number of peaks found: 17                      Corr. Area 1: 13,633.1  
 Noise: 0.1

**Peak table for sample 6 : sample 6**

Peak	Aligned Migration Time [s]	Size [bp]	Conc. [pg/μl]	Molarity [pmol/l]	Observations
1	43.00	35	125.00	5,411.3	Lower Marker
2	61.24	167	7,531.25	68,176.8	
3	66.58	196	4,165.42	32,201.5	
4	68.24	211	959.32	6,891.7	
5	68.65	216	544.69	3,822.9	
6	74.82	290	645.53	3,374.1	
7	76.16	308	561.36	2,758.3	
8	77.82	337	435.79	1,961.8	
9	79.29	362	577.72	2,420.4	
10	80.58	384	430.26	1,699.5	
11	81.18	394	570.29	2,194.3	
12	82.05	411	528.85	1,951.9	
13	82.93	429	722.02	2,552.4	
14	83.89	449	366.99	1,239.5	
15	84.63	464	688.29	2,248.4	
16	85.78	488	659.83	2,050.3	
17	86.84	514	322.65	951.5	
18	87.44	532	3,091.32	8,807.4	
19	113.00	10,380	75.00	10.9	Upper Marker

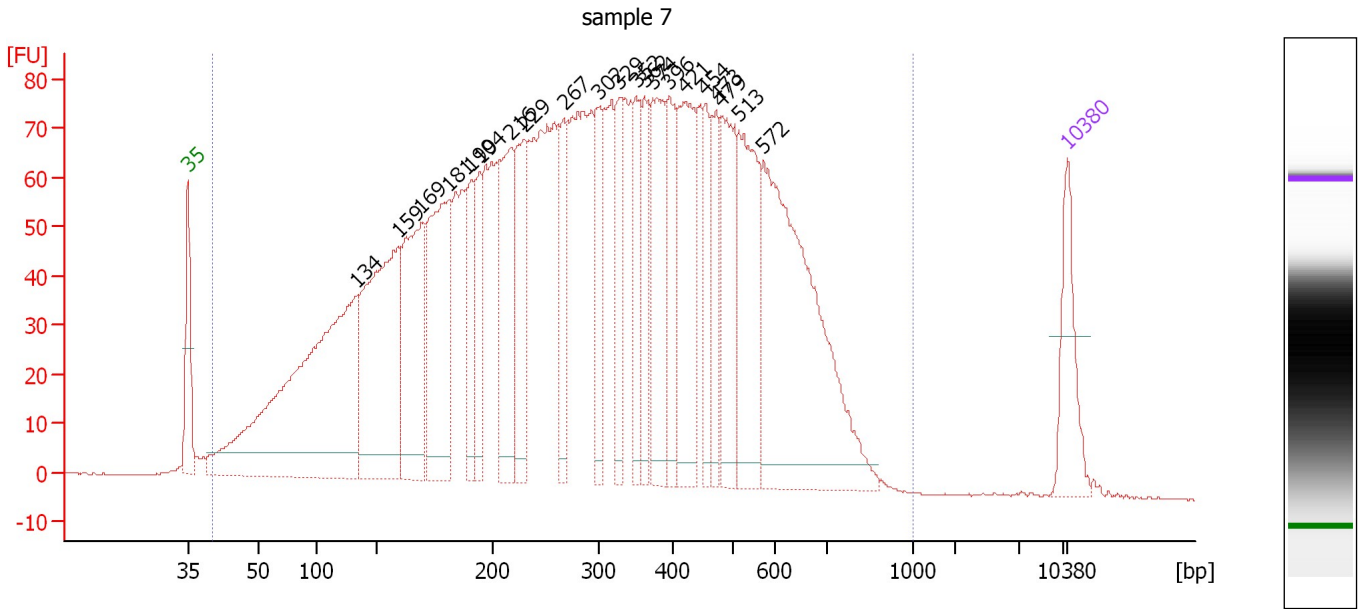
**Region table for sample 6 : sample 6**

From [bp]	To [bp]	Average Size [bp]	Molarity [pmol/l]	Conc. [pg/μl]	Co Corr. lor Area	% of Total	Size distribution in CV [%]
40	1,000	326	248,701.3	31,116.90	13,633.1	100	53.6

Assay Class: High Sensitivity DNA Assay  
 Data Path: C:\...ents and Settings\Bioanalyzer\2014-04-21\2014-04-21\_001.xad

Created: 4/21/2014 9:37:27 AM  
 Modified: 4/21/2014 10:19:13 AM

**Electropherogram Summary Continued ...**



**Overall Results for sample 7 : sample 7**

Number of peaks found: 21                      Corr. Area 1: 3,761.5  
 Noise: 0.2

**Peak table for sample 7 : sample 7**

Peak	Aligned Migration Time [s]	Size [bp]	Conc. [pg/μl]	Molarity [pmol/l]	Observations
1	43.00	35	125.00	5,411.3	Lower Marker
2	56.48	134	803.60	9,091.6	
3	59.73	159	470.44	4,474.0	
4	61.59	169	295.66	2,646.4	
5	63.73	181	323.35	2,710.8	
6	65.54	190	110.48	879.0	
7	66.24	194	103.56	808.1	
8	68.66	216	200.48	1,406.6	
9	69.77	229	152.52	1,007.7	
10	72.93	267	117.58	666.7	
11	75.77	302	98.44	494.3	
12	77.35	329	102.76	473.8	
13	78.70	352	98.55	424.7	
14	79.30	362	89.34	374.1	
15	80.00	374	181.64	736.4	
16	81.30	396	122.14	467.5	
17	82.56	421	206.06	741.7	
18	84.14	454	84.89	283.6	
19	85.07	473	82.77	265.3	
20	85.39	479	172.48	545.0	
21	86.83	513	209.10	617.0	
22	88.78	572	490.58	1,299.1	
23	113.00	10,380	75.00	10.9	Upper Marker

Assay Class: High Sensitivity DNA Assay  
Data Path: C:\...ents and Settings\Bioanalyzer\2014-04-21\2014-04-21\_001.xad

Created: 4/21/2014 9:37:27 AM  
Modified: 4/21/2014 10:19:13 AM

**Electropherogram Summary Continued ...**

... Region table for sample 7 : sample 7

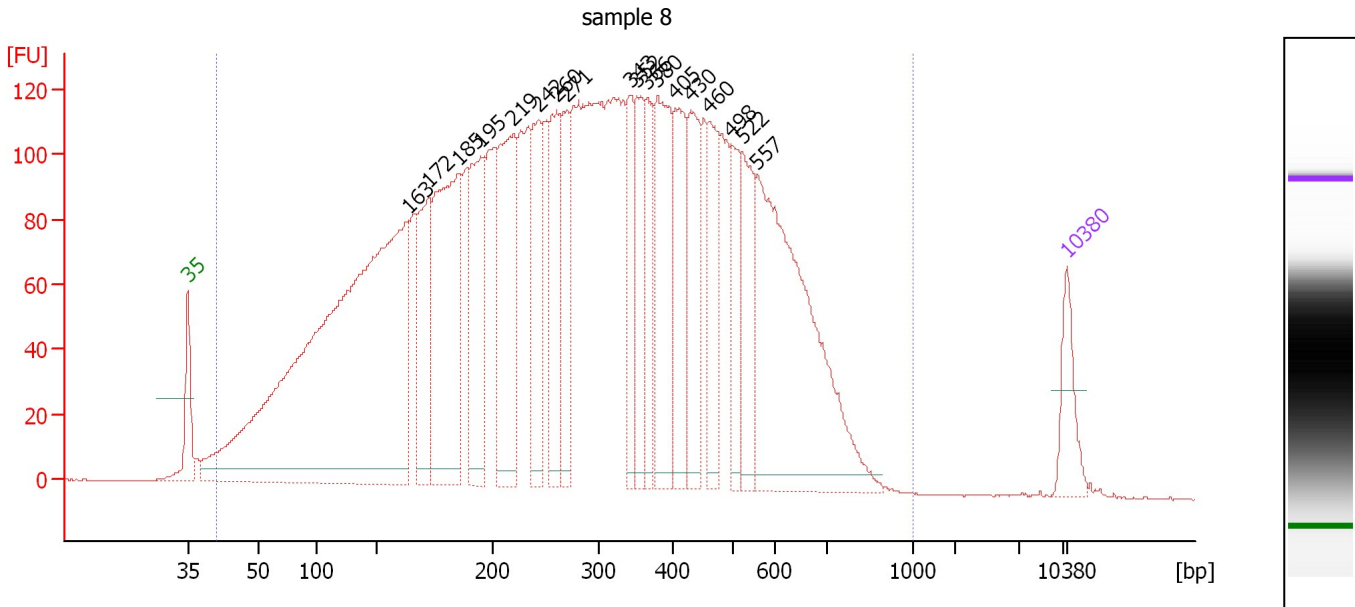
From [bp]	To [bp]	Average Size [bp]	Molarity [pmol/l]	Conc. [pg/ $\mu$ l]	Co Corr. lor Area	% of Total	Size distribution in CV [%]
40	1,000	331	48,328.6	6,294.95	 3,761.5	99	52.0



Assay Class: High Sensitivity DNA Assay  
 Data Path: C:\...ents and Settings\Bioanalyzer\2014-04-21\2014-04-21\_001.xad

Created: 4/21/2014 9:37:27 AM  
 Modified: 4/21/2014 10:19:13 AM

**Electropherogram Summary Continued ...**



**Overall Results for sample 8 : sample 8**

Number of peaks found: 18                      Corr. Area 1: 5,827.5  
 Noise: 0.1

**Peak table for sample 8 : sample 8**

Peak	Aligned Migration Time [s]	Size [bp]	Conc. [pg/μl]	Molarity [pmol/l]	Observations
1	43.00	35	125.00	5,411.3	Lower Marker
2	60.50	163	2,250.84	20,867.9	
3	62.16	172	318.36	2,799.6	
4	64.61	185	628.15	5,131.5	
5	66.32	195	359.33	2,797.9	
6	68.92	219	450.39	3,114.8	
7	70.86	242	237.48	1,484.8	
8	72.37	260	245.95	1,430.6	
9	73.22	271	204.57	1,145.0	
10	78.19	343	160.38	708.6	
11	78.71	352	202.61	872.7	
12	79.56	366	152.07	629.1	
13	80.36	380	315.00	1,256.2	
14	81.78	405	247.32	925.3	
15	83.01	430	221.33	779.2	
16	84.43	460	175.09	577.1	
17	86.28	498	126.82	386.0	
18	87.13	522	195.35	566.6	
19	88.26	557	758.85	2,066.0	
20	113.00	10,380	75.00	10.9	Upper Marker

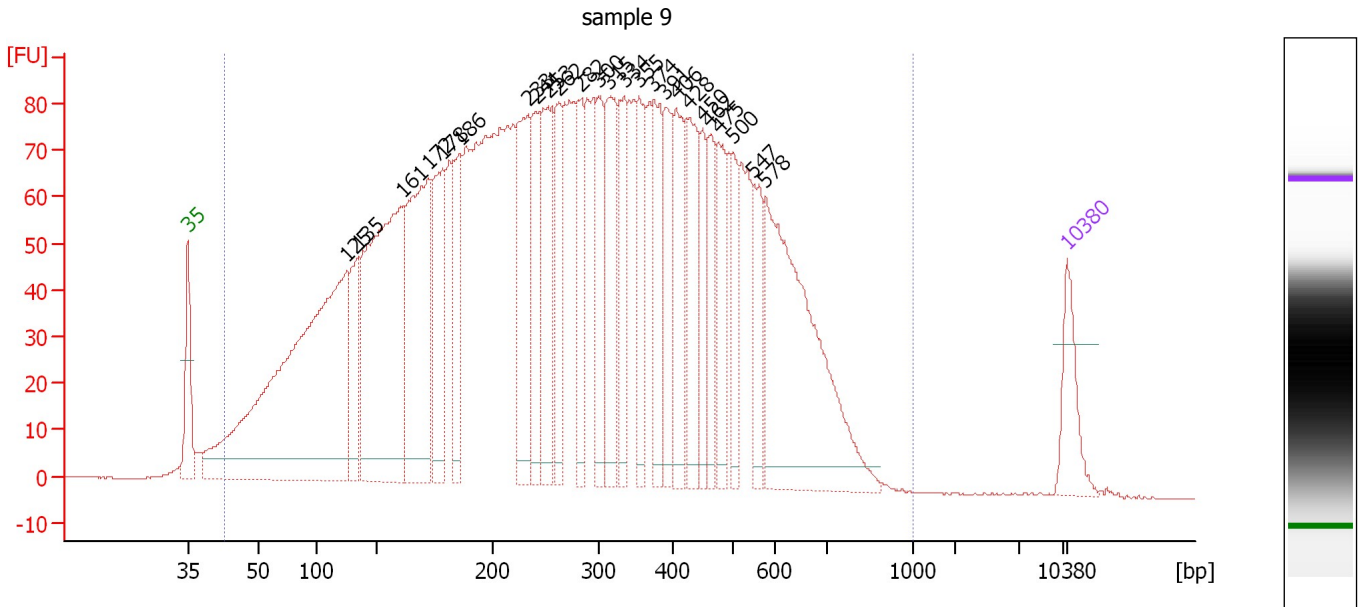
**Region table for sample 8 : sample 8**

From [bp]	To [bp]	Average Size [bp]	Molarity [pmol/l]	Conc. [pg/μl]	Co Corr. lor Area	% of Total	Size distribution in CV [%]
41	1,000	319	80,744.6	10,175.54	5,827.5	99	52.7

Assay Class: High Sensitivity DNA Assay  
 Data Path: C:\...ents and Settings\Bioanalyzer\2014-04-21\2014-04-21\_001.xad

Created: 4/21/2014 9:37:27 AM  
 Modified: 4/21/2014 10:19:13 AM

**Electropherogram Summary Continued ...**



**Overall Results for sample 9 : sample 9**

Number of peaks found: 25                      Corr. Area 1: 4,125.6  
 Noise: 0.1

**Peak table for sample 9 : sample 9**

Peak	Aligned Migration Time [s]	Size [bp]	Conc. [pg/μl]	Molarity [pmol/l]	Observations
1	43.00	35	125.00	5,411.3	Lower Marker
2	55.61	125	1,299.80	15,788.0	
3	56.57	135	166.83	1,874.0	
4	60.11	161	811.23	7,619.5	
5	62.11	172	538.79	4,744.5	
6	63.26	178	272.26	2,314.8	
7	64.65	186	176.48	1,440.5	
8	70.09	233	282.22	1,834.0	
9	70.71	241	171.91	1,082.6	
10	71.72	253	265.66	1,593.3	
11	72.48	262	155.63	900.7	
12	74.20	282	150.30	806.3	
13	75.68	300	156.66	790.5	
14	76.54	315	228.09	1,097.4	
15	77.69	334	167.05	756.9	
16	78.88	355	149.90	640.2	
17	80.03	374	181.08	733.1	
18	80.99	391	137.31	532.7	
19	81.85	406	176.62	658.7	
20	82.90	428	187.64	664.3	
21	83.95	450	106.33	358.3	
22	84.52	462	112.42	369.0	
23	85.19	475	132.10	421.0	
24	86.39	500	111.20	336.9	
25	87.96	547	119.91	331.9	

Assay Class: High Sensitivity DNA Assay  
Data Path: C:\...ents and Settings\Bioanalyzer\2014-04-21\2014-04-21\_001.xad

Created: 4/21/2014 9:37:27 AM  
Modified: 4/21/2014 10:19:13 AM

**Electropherogram Summary Continued ...****... Peak table for sample 9 : sample 9**

Peak	Aligned Migration Time [s]	Size [bp]	Conc. [pg/ $\mu$ l]	Molarity [pmol/l]	Observations
26	88.97	578	554.25	1,453.8	
27	113.00	10,380	75.00	10.9	Upper Marker

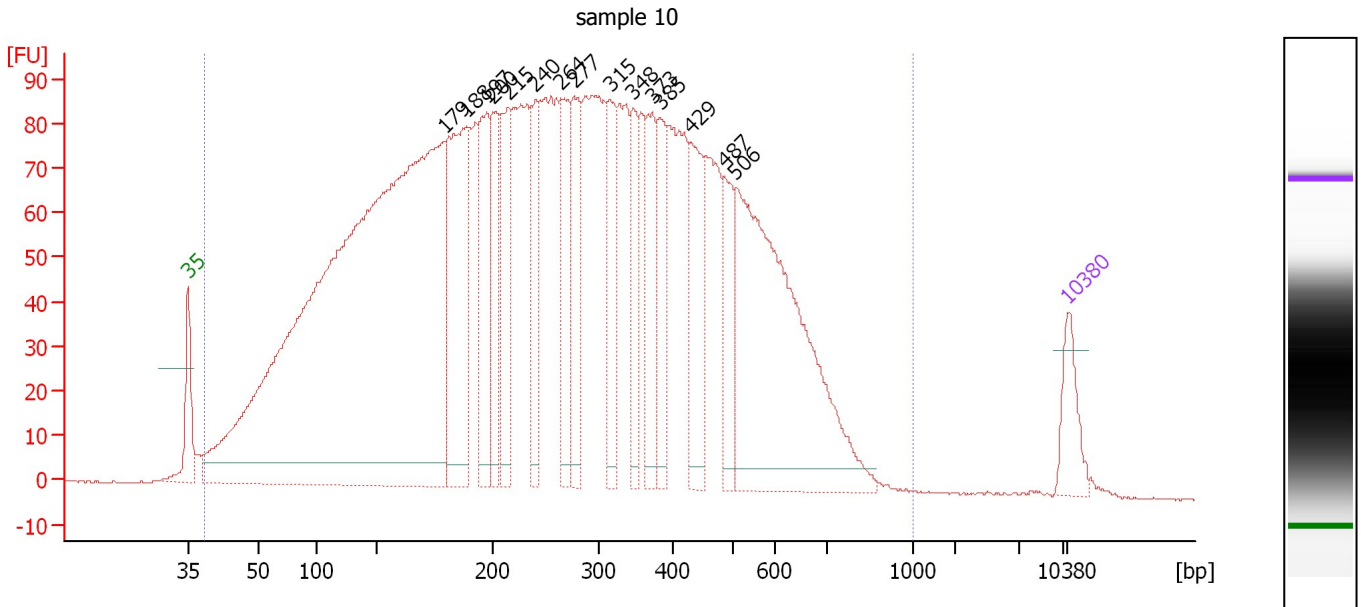
**Region table for sample 9 : sample 9**

From [bp]	To [bp]	Average Size [bp]	Molarity [pmol/l]	Conc. [pg/ $\mu$ l]	Co Corr. lor Area	% of Total	Size distribution in CV [%]
43	1,000	313	75,408.5	9,361.66	4,125.6	99	53.5

Assay Class: High Sensitivity DNA Assay  
 Data Path: C:\...ents and Settings\Bioanalyzer\2014-04-21\2014-04-21\_001.xad

Created: 4/21/2014 9:37:27 AM  
 Modified: 4/21/2014 10:19:13 AM

**Electropherogram Summary Continued ...**



**Overall Results for sample 10 : sample 10**

Number of peaks found: 15                      Corr. Area 1: 4,459.4  
 Noise: 0.2

**Peak table for sample 10 : sample 10**

Peak	Aligned Migration Time [s]	Size [bp]	Conc. [pg/μl]	Molarity [pmol/l]	Observations
1	43.00	35	125.00	5,411.3	Lower Marker
2	63.37	179	3,652.26	30,952.5	
3	65.16	188	606.72	4,880.2	
4	66.75	197	298.27	2,294.9	
5	67.24	200	203.69	1,546.8	
6	68.59	215	242.81	1,709.9	
7	70.67	240	205.28	1,295.5	
8	72.65	264	238.64	1,370.2	
9	73.72	277	246.08	1,347.8	
10	76.57	315	187.73	901.8	
11	78.46	348	149.22	650.6	
12	79.96	373	194.52	790.1	
13	80.64	385	167.18	658.7	
14	82.96	429	221.11	780.5	
15	85.76	487	160.86	500.2	
16	86.59	506	943.73	2,825.1	
17	113.00	10,380	75.00	10.9	Upper Marker

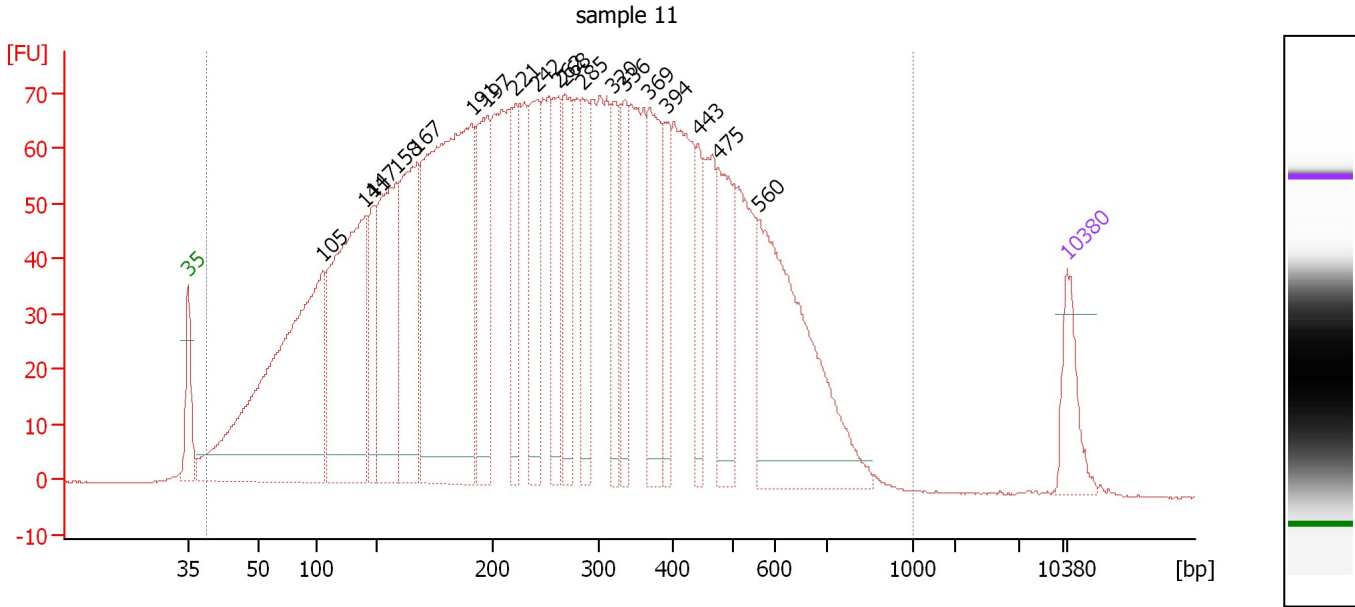
**Region table for sample 10 : sample 10**

From [bp]	To [bp]	Average Size [bp]	Molarity [pmol/l]	Conc. [pg/μl]	Co Corr. for Area	% of Total	Size distribution in CV [%]
38	1,000	298	98,123.8	11,323.52	4,459.4	100	55.2

Assay Class: High Sensitivity DNA Assay  
 Data Path: C:\...ents and Settings\Bioanalyzer\2014-04-21\2014-04-21\_001.xad

Created: 4/21/2014 9:37:27 AM  
 Modified: 4/21/2014 10:19:13 AM

**Electropherogram Summary Continued ...**



**Overall Results for sample 11 : sample 11**

Number of peaks found: 19      Corr. Area 1: 3,550.6  
 Noise: 0.1

**Peak table for sample 11 : sample 11**

Peak	Aligned Migration Time [s]	Size [bp]	Conc. [pg/μl]	Molarity [pmol/l]	Observations
1	43.00	35	125.00	5,411.3	Lower Marker
2	53.74	105	1,088.37	15,724.5	
3	57.13	141	718.20	7,728.3	
4	57.72	147	158.29	1,631.0	
5	59.58	158	430.29	4,113.3	
6	61.25	167	405.12	3,666.0	
7	65.61	191	1,118.97	8,884.8	
8	66.84	197	308.12	2,365.1	
9	69.05	221	163.84	1,125.2	
10	70.81	242	230.89	1,446.7	
11	72.48	262	199.74	1,156.0	
12	73.02	268	208.86	1,179.6	
13	74.39	285	155.94	829.8	
14	76.85	320	133.50	631.9	
15	77.78	336	129.52	584.1	
16	79.74	369	234.90	963.6	
17	81.16	394	109.99	423.5	
18	83.62	443	97.93	335.1	
19	85.19	475	191.44	610.3	
20	88.37	560	521.94	1,412.5	
21	113.00	10,380	75.00	10.9	Upper Marker

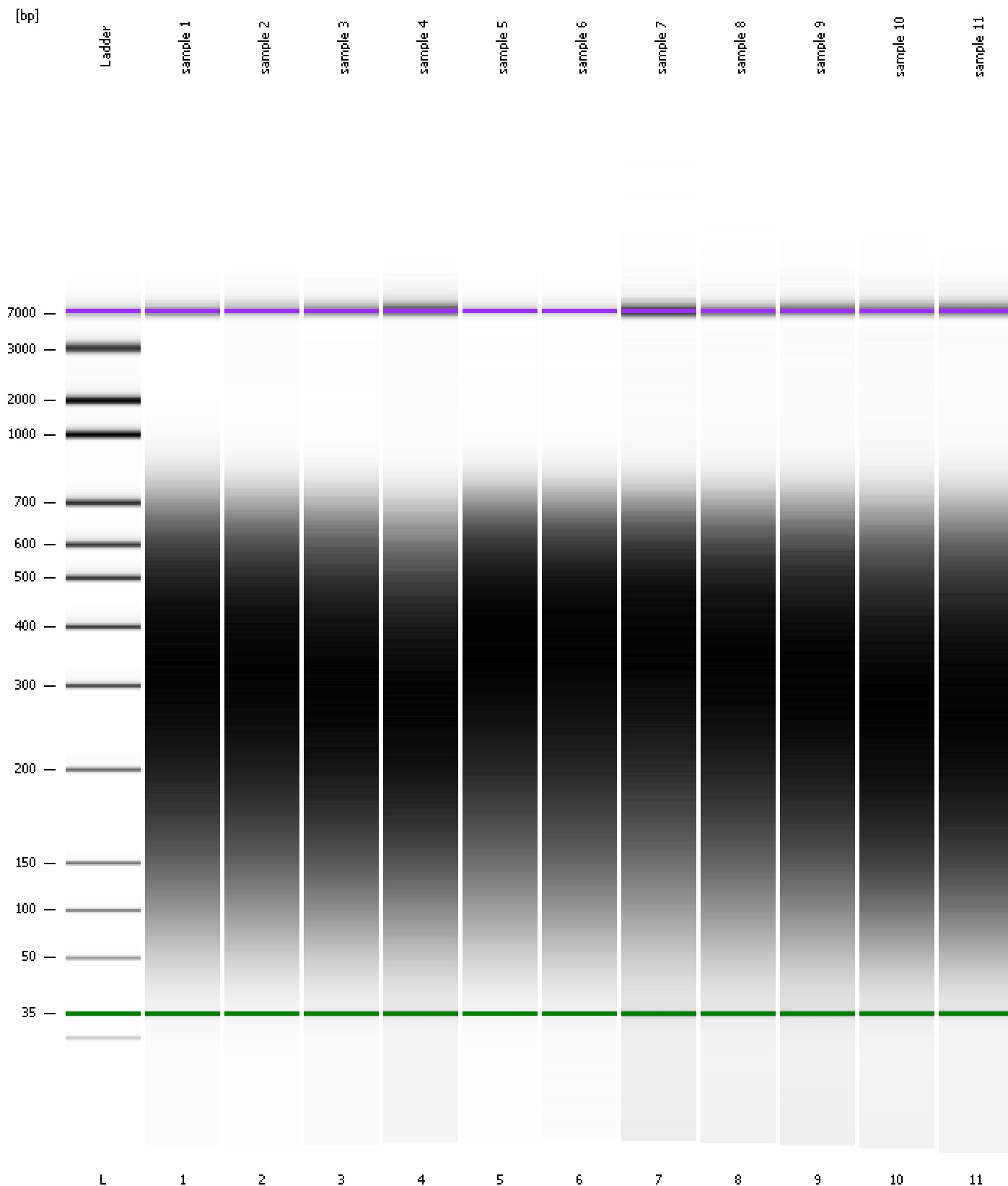
**Region table for sample 11 : sample 11**

From [bp]	To [bp]	Average Size [bp]	Molarity [pmol/l]	Conc. [pg/μl]	Co Corr. lor Area	% of Total	Size distribution in CV [%]
39	1,000	299	80,275.7	9,292.59	3,550.6	100	55.3

Assay Class: High Sensitivity DNA Assay  
Data Path: C:\...ents and Settings\Bioanalyzer\2014-04-21\2014-04-21\_001.xad

Created: 4/21/2014 9:37:27 AM  
Modified: 4/21/2014 10:19:13 AM

**Gel Image**

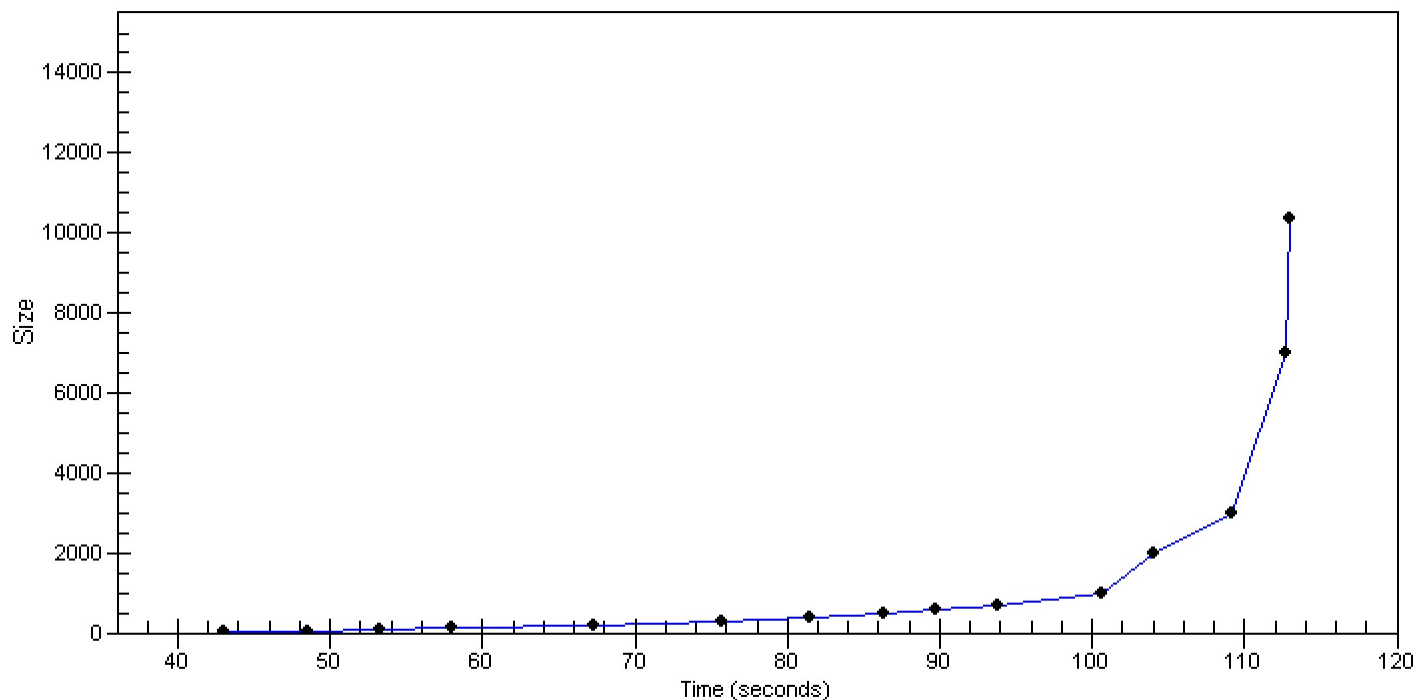


Assay Class: High Sensitivity DNA Assay  
Data Path: C:\...ents and Settings\Bioanalyzer\2014-04-21\2014-04-21\_001.xad

Created: 4/21/2014 9:37:27 AM  
Modified: 4/21/2014 10:19:13 AM

**Curves**

**Standard Curve**



Assay Class: High Sensitivity DNA Assay  
 Data Path: C:\...ents and Settings\Bioanalyzer\2014-04-21\2014-04-21\_001.xad

Created: 4/21/2014 9:37:27 AM  
 Modified: 4/21/2014 10:19:13 AM

**Run Logbook**

Description	Number	Source	Category	Sub Category	Time	Time Zone	User	Host
Run ended on port 1 (Number of wells acquired: 12)		Instrument	Run		4/21/2014 10:18:47 AM	(GMT --07:00) Pacific Standard Time	UC Davis	D8XSMGH1
Run started on port 1 (File: C:\Documents and Settings\Bioanalyzer\2014-04-21\2014-04-21_001.xad)		Instrument	Run		4/21/2014 9:37:33 AM	(GMT --07:00) Pacific Standard Time	UC Davis	D8XSMGH1
Product Number : G2938B		Instrument	Run		4/21/2014 9:37:33 AM	(GMT --07:00) Pacific Standard Time	UC Davis	D8XSMGH1
Name :		Instrument	Run		4/21/2014 9:37:33 AM	(GMT --07:00) Pacific Standard Time	UC Davis	D8XSMGH1
Vendor : Agilent Technologies		Instrument	Run		4/21/2014 9:37:33 AM	(GMT --07:00) Pacific Standard Time	UC Davis	D8XSMGH1
Serial# : DE13701086		Instrument	Run		4/21/2014 9:37:33 AM	(GMT --07:00) Pacific Standard Time	UC Davis	D8XSMGH1
Firmware : C.01.069		Instrument	Run		4/21/2014 9:37:33 AM	(GMT --07:00) Pacific Standard Time	UC Davis	D8XSMGH1
Cartridge : Electrode		Instrument	Run		4/21/2014 9:37:33 AM	(GMT --07:00) Pacific Standard Time	UC Davis	D8XSMGH1