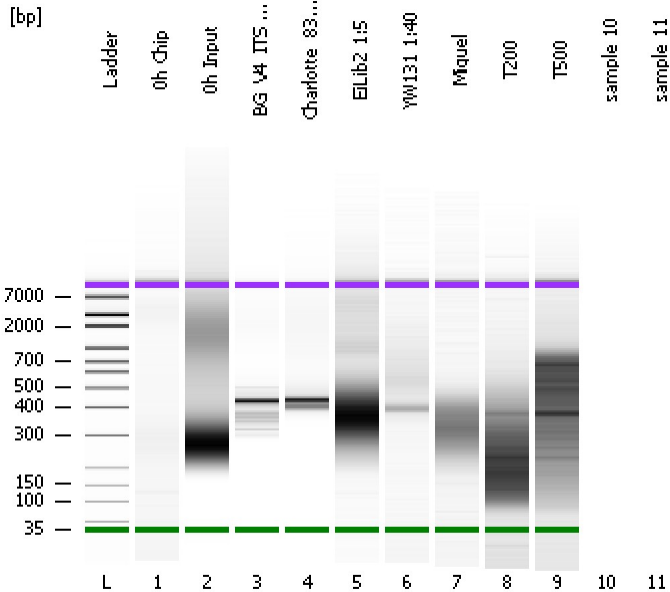


Assay Class: High Sensitivity DNA Assay
Data Path: C:\... bioanalyzer\2100 expert\Data\2014-06-26\2014-06-26_001.xad

Created: 6/26/2014 7:47:26 AM
Modified: 6/26/2014 8:24:22 AM

Electrophoresis File Run Summary



Instrument Information:

Instrument Name: DE13701086 Firmware: C.01.069
Serial#: DE13701086 Type: G2938B

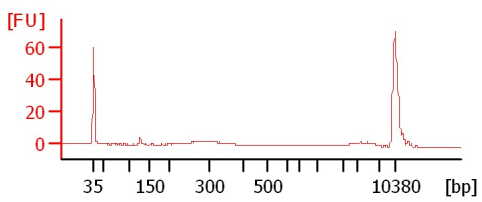
Assay Information:

Assay Origin Path: C:\Program Files\Agilent\2100 bioanalyzer\2100 expert\assays\dsDNA\High Sensitivity DNA.xsy
Assay Class: High Sensitivity DNA Assay
Version: 1.03
Assay Comments: Copyright © 2003-2010 Agilent Technologies

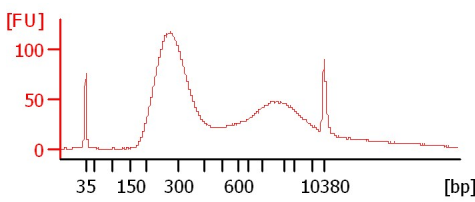
Chip Information:

Chip Lot #:
Reagent Kit Lot #:
Chip Comments:

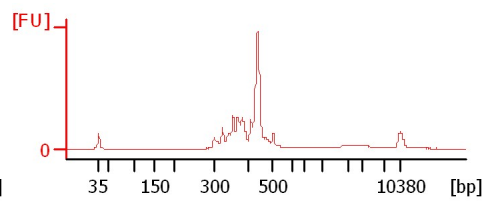
0h Chip



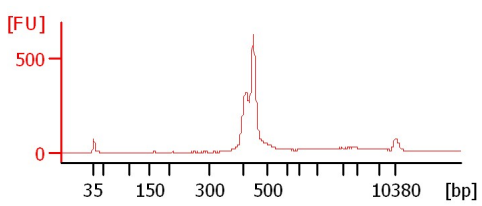
0h Input



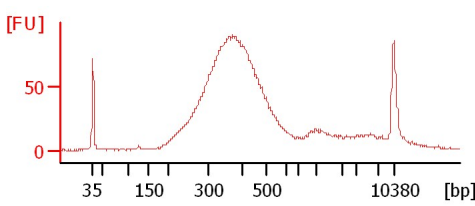
BG_V4_ITS 1:15



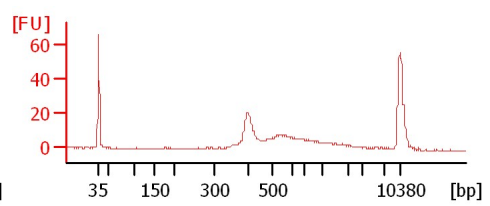
Charlotte_83X 1:10



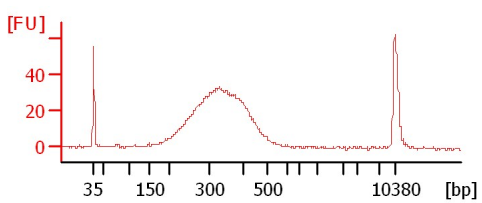
EiLib2 1:5



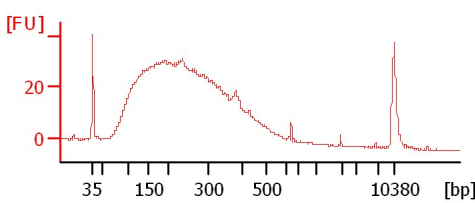
YW131 1:40



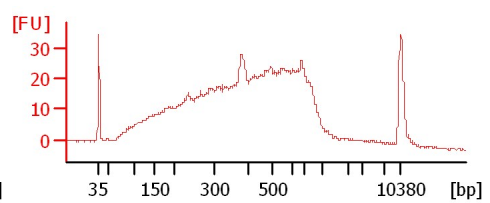
Miguel



T200



T500



Assay Class: High Sensitivity DNA Assay
 Data Path: C:\... bioanalyzer\2100 expert\Data\2014-06-26\2014-06-26_001.xad

Created: 6/26/2014 7:47:26 AM
 Modified: 6/26/2014 8:24:22 AM

Electrophoresis File Run Summary (Chip Summary)

Sample Name	Sample Comment	Rest. Digest	Status	Observation	Result Label	Result Color
0h Chip		<input type="checkbox"/>	✓			
0h Input		<input type="checkbox"/>	✓			
BG_V4_ITS 1:15		<input type="checkbox"/>	✓			
Charlotte_83X 1:10		<input type="checkbox"/>	✓			
EiLib2 1:5		<input type="checkbox"/>	✓			
YW131 1:40		<input type="checkbox"/>	✓			
Miguel		<input type="checkbox"/>	✓			
T200		<input type="checkbox"/>	✓			
T500		<input type="checkbox"/>	✓			
sample 10		<input type="checkbox"/>				
sample 11		<input type="checkbox"/>				
Ladder		<input type="checkbox"/>	✓			

Chip Lot #

Reagent Kit Lot #

Chip Comments :

Assay Class: High Sensitivity DNA Assay
Data Path: C:\... bioanalyzer\2100 expert\Data\2014-06-26\2014-06-26_001.xad

Created: 6/26/2014 7:47:26 AM
Modified: 6/26/2014 8:24:22 AM

Electrophoresis Assay Details

General Analysis Settings

Number of Available Sample and Ladder Wells (Max.) : 12
Minimum Visible Range [s] : 32
Maximum Visible Range [s] : 138
Start Analysis Time Range [s] : 33
End Analysis Time Range [s] : 137.5
Ladder Concentration [pg/μl] : 1950
Uses Standard Area for Ladder Fragments
Lower Marker Concentration [pg/μl] : 125
Upper Marker Concentration [pg/μl] : 75
Used Upper Marker for Quantitation
Standard Curve Fit is Point to Point
Show Data Aligned to Lower and Upper Marker

Integrator Settings

Integration Start Time [s] : 33.05
Integration End Time [s] : 137
Slope Threshold : 0.8
Height Threshold [FU] : 5
Area Threshold : 0.1
Width Threshold [s] : 0.6
Baseline Plateau [s] : 0.5

Filter Settings

Filter Width [s] : 0.5
Polynomial Order : 4

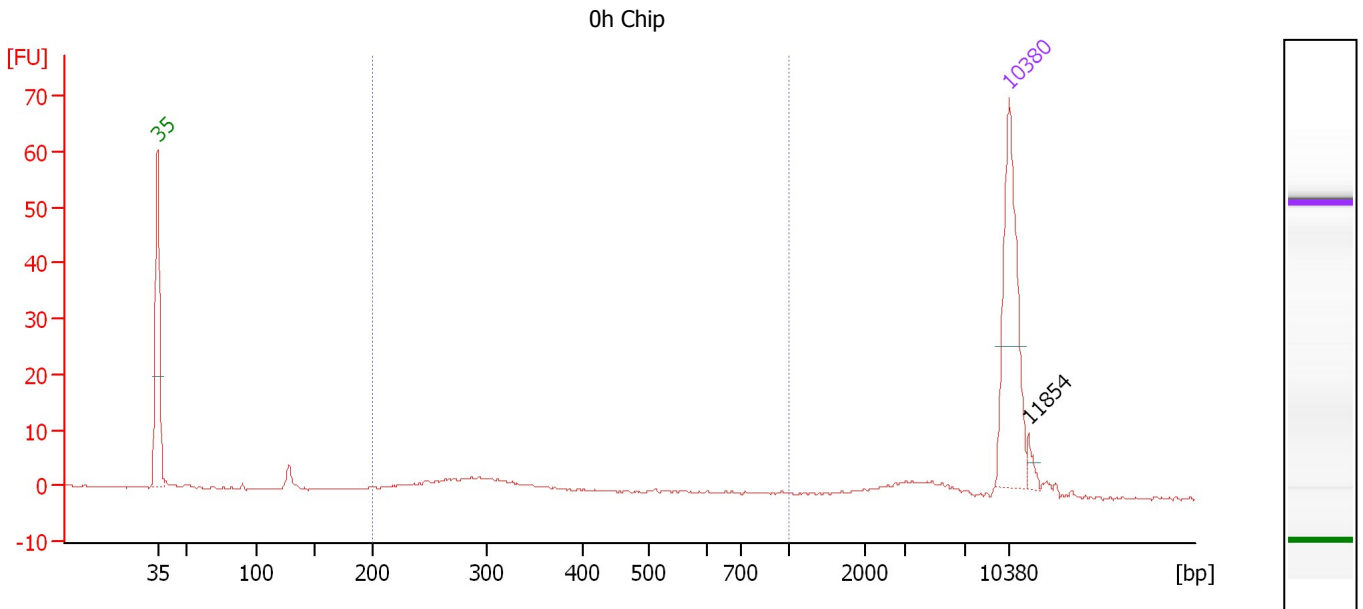
Ladder

Ladder Peak	Size	Area
1	35	160
2	50	210
3	100	208
4	150	221
5	200	242
6	300	270
7	400	305
8	500	306
9	600	336
10	700	321
11	1000	366
12	2000	413
13	3000	411
14	7000	400
15	10380	214

Assay Class: High Sensitivity DNA Assay
 Data Path: C:\... bioanalyzer\2100 expert\Data\2014-06-26\2014-06-26_001.xad

Created: 6/26/2014 7:47:26 AM
 Modified: 6/26/2014 8:24:22 AM

Electropherogram Summary



Overall Results for sample 1 : 0h Chip

Number of peaks found: 1 Corr. Area 1: 31.1
 Noise: 0.2

Peak table for sample 1 : 0h Chip

Peak	Size [bp]	Conc. [pg/μl]	Molarity [pmol/l]	Observations
1	35	125.00	5,411.3	Lower Marker
2	10,380	75.00	10.9	Upper Marker
3	11,854	0.00	0.0	

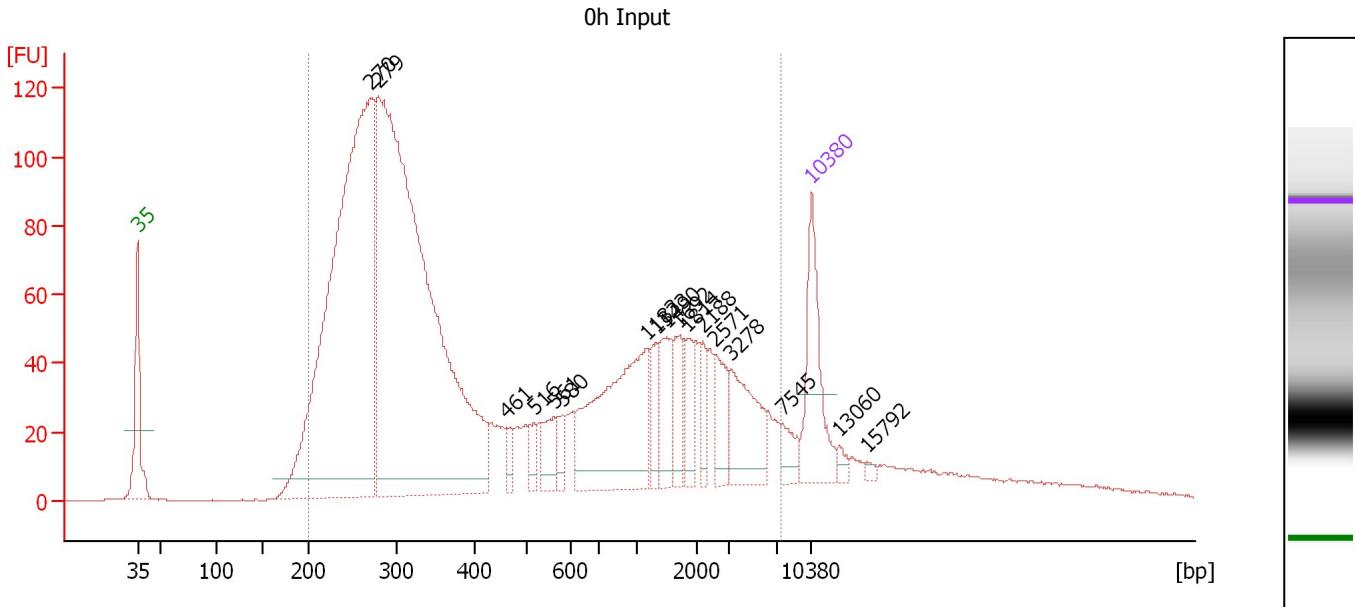
Region table for sample 1 : 0h Chip

From [bp]	To [bp]	Average Size [bp]	Molarity [pmol/l]	Conc. [pg/μl]	Co Corr. lor Area	% of Total	Size distribution in CV [%]
200	1,000	332	230.1	45.25	31.1	47	39.1

Assay Class: High Sensitivity DNA Assay
 Data Path: C:\... bioanalyzer\2100 expert\Data\2014-06-26\2014-06-26_001.xad

Created: 6/26/2014 7:47:26 AM
 Modified: 6/26/2014 8:24:22 AM

Electropherogram Summary Continued ...



Overall Results for sample 2 : 0h Input

Number of peaks found: 17 Corr. Area 1: 2,942.8
 Noise: 0.2

Peak table for sample 2 : 0h Input

Peak	Size [bp]	Conc. [pg/μl]	Molarity [pmol/l]	Observations
1	35	125.00	5,411.3	Lower Marker
2	270	916.28	5,146.6	
3	279	1,111.11	6,028.1	
4	461	16.00	52.6	
5	516	18.09	53.1	
6	561	31.30	84.6	
7	580	14.87	38.9	
8	1,183	180.64	231.3	
9	1,323	29.00	33.2	
10	1,490	42.97	43.7	
11	1,692	31.70	28.4	
12	1,814	32.05	26.8	
13	2,188	20.78	14.4	
14	2,571	33.54	19.8	
15	3,278	66.70	30.8	
16	7,545	17.45	3.5	
17	10,380	75.00	10.9	Upper Marker
18	13,060	0.00	0.0	
19	15,792	0.00	0.0	

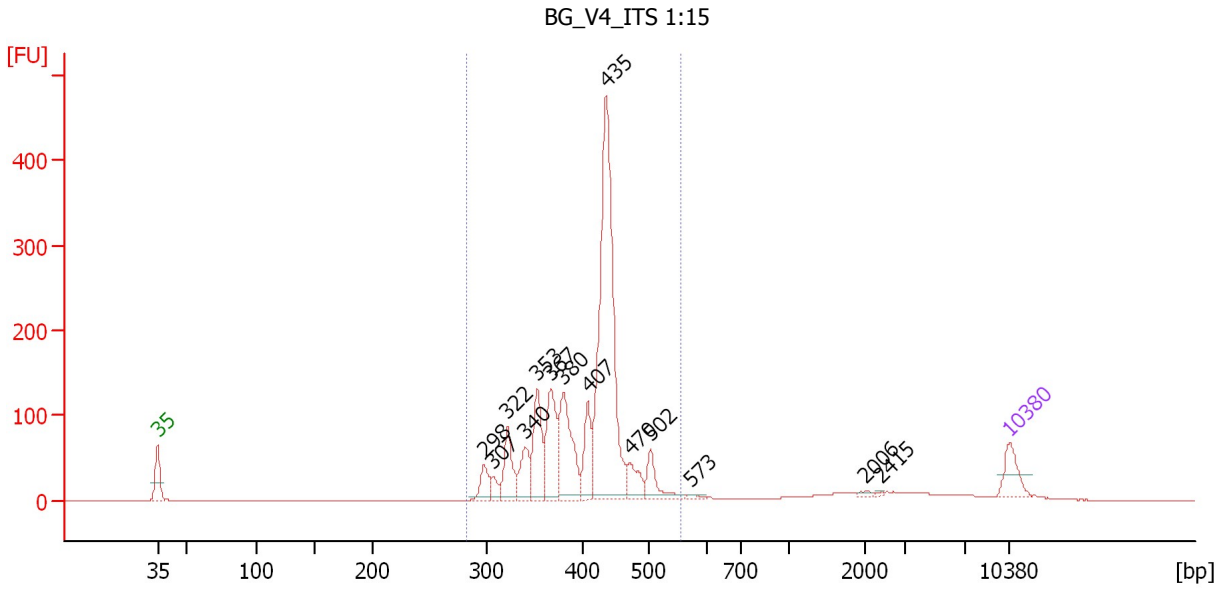
Region table for sample 2 : 0h Input

From [bp]	To [bp]	Average Size [bp]	Molarity [pmol/l]	Conc. [pg/μl]	Co Corr. lor Area	% of Total	Size distribution in CV [%]
200	7,444	957	11,828.3	2,738.44	2,942.8	93	100.0

Assay Class: High Sensitivity DNA Assay
 Data Path: C:\... bioanalyzer\2100 expert\Data\2014-06-26\2014-06-26_001.xad

Created: 6/26/2014 7:47:26 AM
 Modified: 6/26/2014 8:24:22 AM

Electropherogram Summary Continued ...



Overall Results for sample 3 : BG V4 ITS 1:15

Number of peaks found: 14 Corr. Area 1: 1,749.6
 Noise: 0.2

Peak table for sample 3 : BG V4 ITS 1:15

Peak	Size [bp]	Conc. [pg/μl]	Molarity [pmol/l]	Observations
1	35	125.00	5,411.3	Lower Marker
2	298	85.77	435.9	
3	307	39.86	196.5	
4	322	150.28	707.9	
5	340	129.97	579.1	
6	353	216.00	927.2	
7	367	248.92	1,026.9	
8	380	304.94	1,217.3	
9	407	152.45	567.7	
10	435	1,109.39	3,867.4	
11	470	89.68	288.9	
12	502	99.41	299.8	
13	573	9.75	25.8	
14	2,006	7.25	5.5	
15	2,415	3.88	2.4	
16	10,380	75.00	10.9	Upper Marker

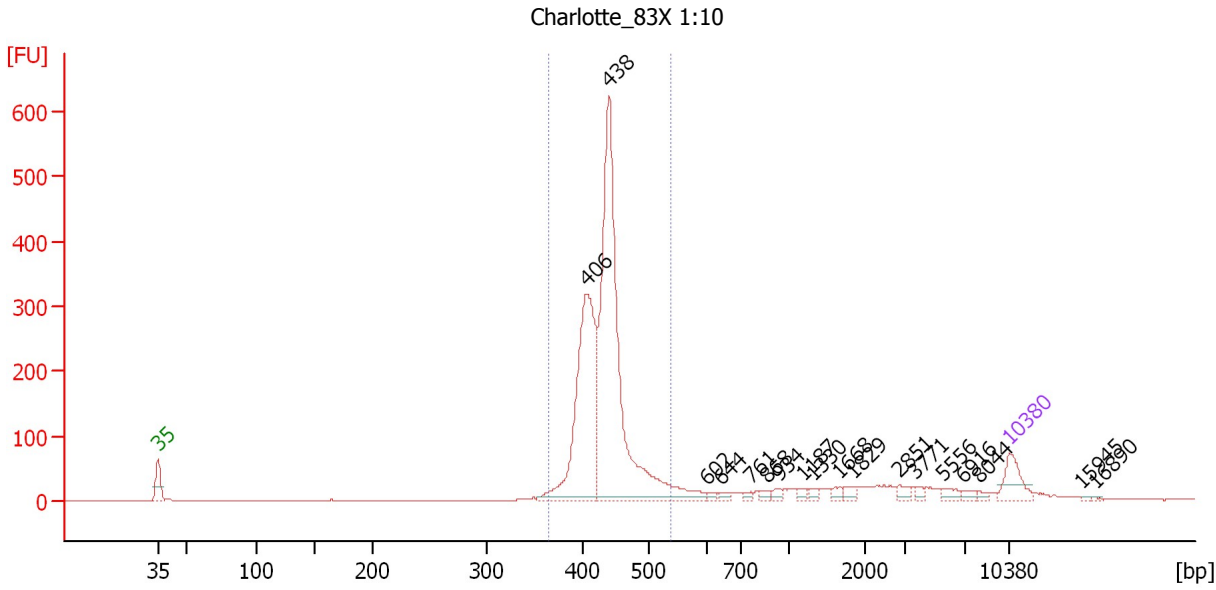
Region table for sample 3 : BG V4 ITS 1:15

From [bp]	To [bp]	Average Size [bp]	Molarity [pmol/l]	Conc. [pg/μl]	Co Corr. lor Area	% of Total	Size distribution in CV [%]
283	556	406	10,100.0	2,647.95	1,749.6	91	12.4

Assay Class: High Sensitivity DNA Assay
 Data Path: C:\... bioanalyzer\2100 expert\Data\2014-06-26\2014-06-26_001.xad

Created: 6/26/2014 7:47:26 AM
 Modified: 6/26/2014 8:24:22 AM

Electropherogram Summary Continued ...



Overall Results for sample 4 : Charlotte 83X 1:10

Number of peaks found: 18 Corr. Area 1: 2,011.4
 Noise: 0.6

Peak table for sample 4 : Charlotte 83X 1:10

Peak	Size [bp]	Conc. [pg/μl]	Molarity [pmol/l]	Observations
1	35	125.00	5,411.3	Lower Marker
2	406	782.95	2,923.2	
3	438	1,340.94	4,638.5	
4	602	12.20	30.7	
5	644	12.18	28.7	
6	761	10.27	20.4	
7	868	13.54	23.6	
8	934	13.64	22.1	
9	1,187	11.91	15.2	
10	1,330	13.60	15.5	
11	1,668	14.46	13.1	
12	1,829	17.66	14.6	
13	2,851	20.79	11.0	
14	3,771	12.26	4.9	
15	5,556	21.00	5.7	
16	6,916	13.36	2.9	
17	8,044	9.77	1.8	
18	10,380	75.00	10.9	Upper Marker
19	15,945	0.00	0.0	
20	16,890	0.00	0.0	

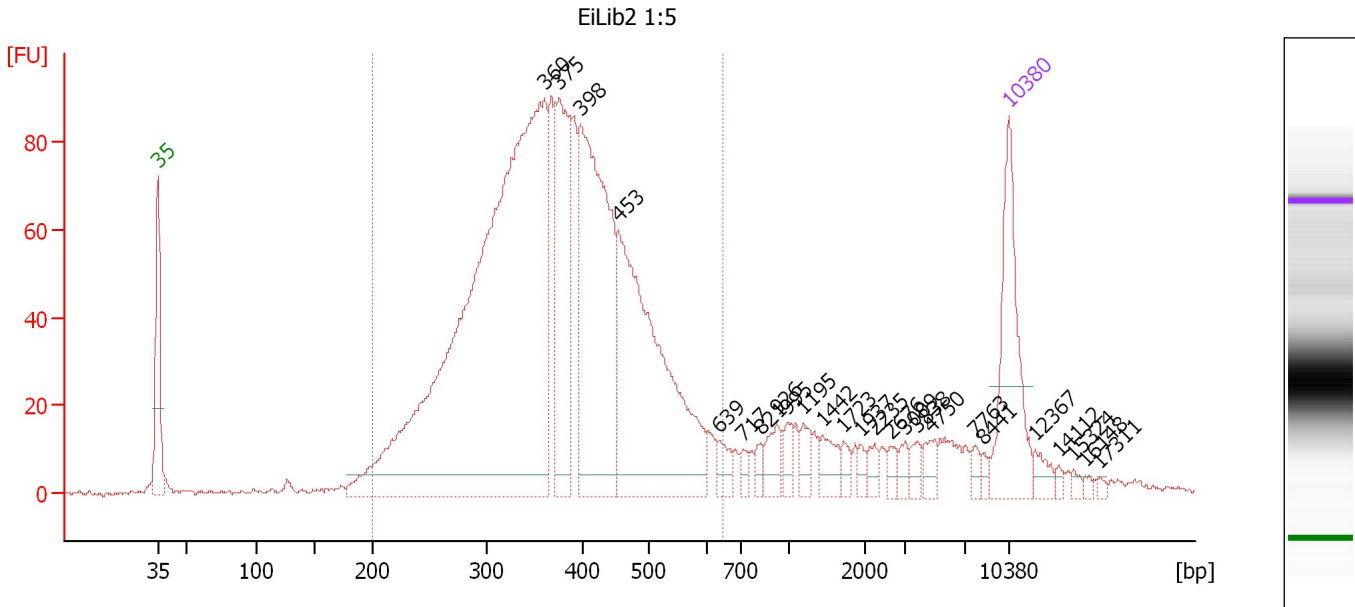
Region table for sample 4 : Charlotte 83X 1:10

From [bp]	To [bp]	Average Size [bp]	Molarity [pmol/l]	Conc. [pg/μl]	Co Corr. lor Area	% of Total	Size distribution in CV [%]
365	536	431	7,217.0	2,046.32	2,011.4	78	6.8

Assay Class: High Sensitivity DNA Assay
 Data Path: C:\... bioanalyzer\2100 expert\Data\2014-06-26\2014-06-26_001.xad

Created: 6/26/2014 7:47:26 AM
 Modified: 6/26/2014 8:24:22 AM

Electropherogram Summary Continued ...



Overall Results for sample 5 : EiLib2 1:5

Number of peaks found: 25 Corr. Area 1: 1,816.9
 Noise: 0.5

Peak table for sample 5 : EiLib2 1:5

Peak	Size [bp]	Conc. [pg/μl]	Molarity [pmol/l]	Observations
1	35	125.00	5,411.3	Lower Marker
2	360	836.03	3,514.7	
3	375	135.95	548.6	
4	398	270.44	1,030.3	
5	453	288.88	966.6	
6	639	13.71	32.5	
7	717	6.67	14.1	
8	821	7.93	14.6	
9	926	18.27	29.9	
10	995	12.19	18.6	
11	1,195	12.00	15.2	
12	1,442	15.48	16.3	
13	1,723	7.21	6.3	
14	1,937	5.15	4.0	
15	2,235	7.75	5.3	
16	2,676	6.14	3.5	
17	3,009	7.08	3.6	
18	3,838	8.15	3.2	
19	4,750	10.11	3.2	
20	7,763	5.35	1.0	
21	8,441	4.03	0.7	
22	10,380	75.00	10.9	Upper Marker
23	12,367	0.00	0.0	
24	14,112	0.00	0.0	
25	15,324	0.00	0.0	
26	16,148	0.00	0.0	


Assay Class: High Sensitivity DNA Assay
Data Path: C:\... bioanalyzer\2100 expert\Data\2014-06-26\2014-06-26_001.xad

Created: 6/26/2014 7:47:26 AM
Modified: 6/26/2014 8:24:22 AM

Electropherogram Summary Continued ...**... Peak table for sample 5 : EiLib2 1:5**

Peak	Size [bp]	Conc. [pg/ μ l]	Molarity [pmol/l]	Observations
27	17,311	0.00	0.0	

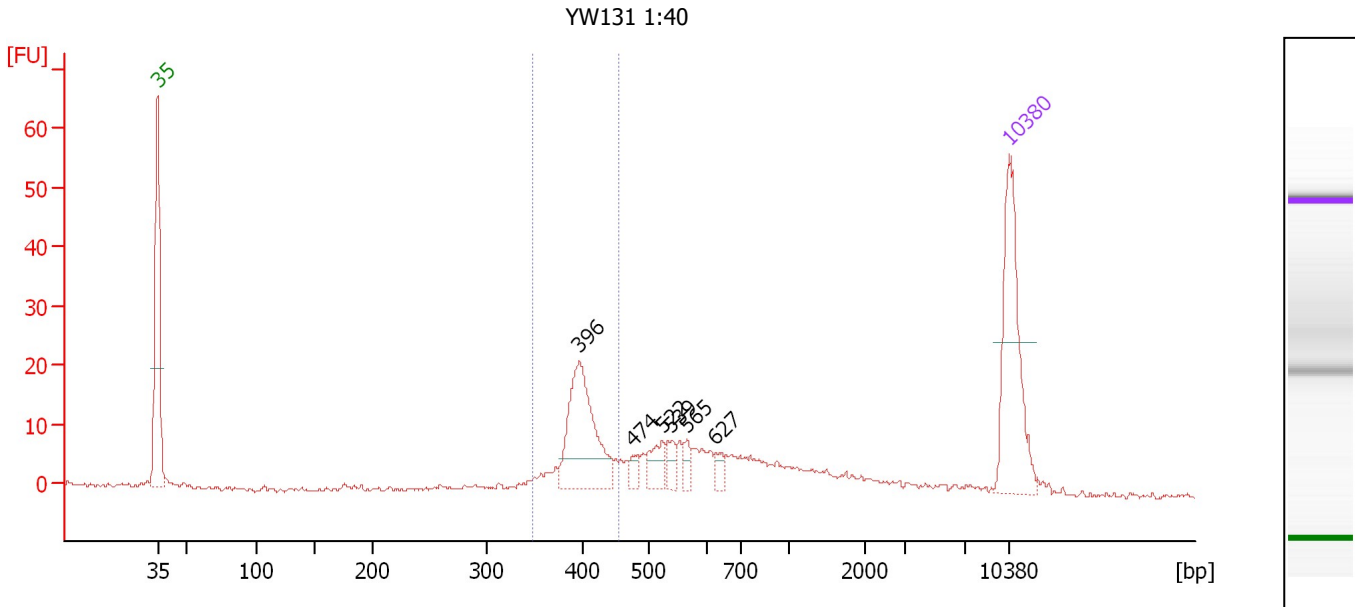
Region table for sample 5 : EiLib2 1:5

From [bp]	To [bp]	Average Size [bp]	Molarity [pmol/l]	Conc. [pg/ μ l]	Co Corr. lor Area	% of Total	Size distribution in CV [%]
200	645	378	7,481.3	1,735.24	 1,816.9	84	22.8

Assay Class: High Sensitivity DNA Assay
 Data Path: C:\... bioanalyzer\2100 expert\Data\2014-06-26\2014-06-26_001.xad

Created: 6/26/2014 7:47:26 AM
 Modified: 6/26/2014 8:24:22 AM

Electropherogram Summary Continued ...



Overall Results for sample 6 : YW131 1:40

Number of peaks found: 6 Corr. Area 1: 82.6
 Noise: 0.4

Peak table for sample 6 : YW131 1:40

Peak	Size [bp]	Conc. [pg/μl]	Molarity [pmol/l]	Observations
1	35	125.00	5,411.3	Lower Marker
2	396	97.79	374.3	
3	474	8.28	26.5	
4	522	18.46	53.6	
5	539	10.45	29.4	
6	565	8.03	21.5	
7	627	6.87	16.6	
8	10,380	75.00	10.9	Upper Marker

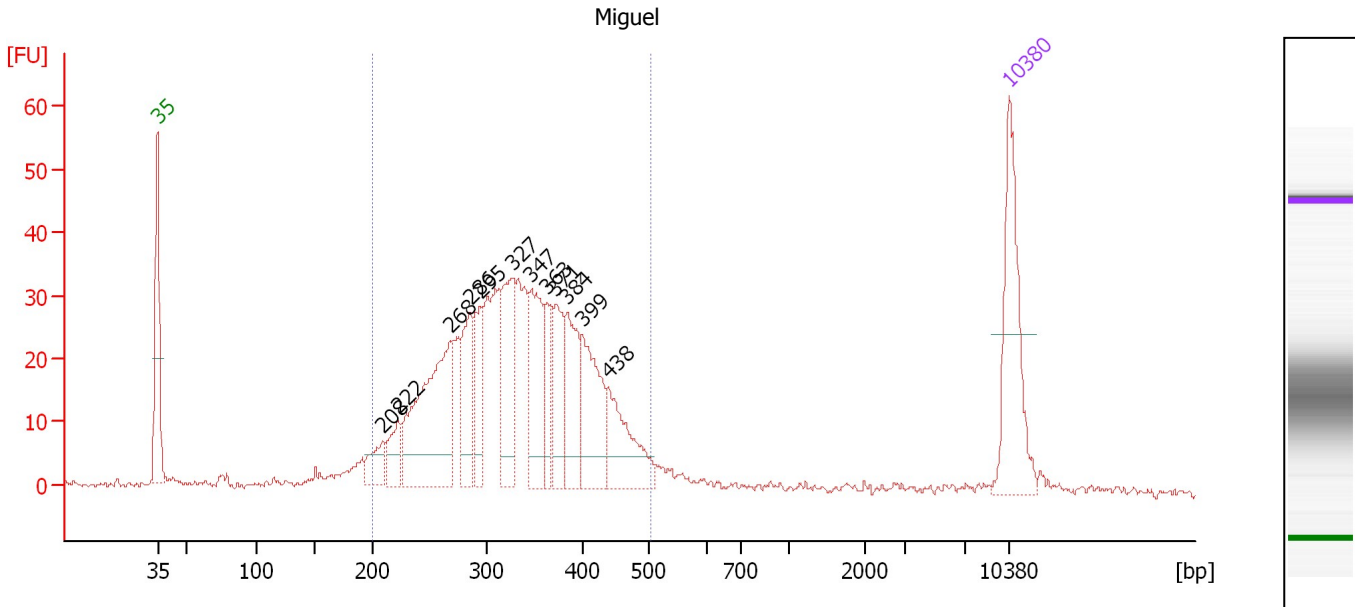
Region table for sample 6 : YW131 1:40

From [bp]	To [bp]	Average Size [bp]	Molarity [pmol/l]	Conc. [pg/μl]	Co Corr. lor Area	% of Total	Size distribution in CV [%]
348	453	401	444.1	117.11	82.6	33	5.5

Assay Class: High Sensitivity DNA Assay
 Data Path: C:\... bioanalyzer\2100 expert\Data\2014-06-26\2014-06-26_001.xad

Created: 6/26/2014 7:47:26 AM
 Modified: 6/26/2014 8:24:22 AM

Electropherogram Summary Continued ...



Overall Results for sample 7 : Miguel

Number of peaks found: 12 Corr. Area 1: 671.5
 Noise: 0.5

Peak table for sample 7 : Miguel

Peak	Size [bp]	Conc. [pg/μl]	Molarity [pmol/l]	Observations
1	35	125.00	5,411.3	Lower Marker
2	208	25.64	186.5	
3	222	29.80	203.6	
4	268	170.59	963.9	
5	286	60.81	322.2	
6	295	45.00	231.4	
7	327	86.12	399.6	
8	347	76.97	336.4	
9	363	36.92	154.0	
10	371	48.83	199.3	
11	384	60.68	239.5	
12	399	74.91	284.4	
13	438	64.35	222.6	
14	10,380	75.00	10.9	Upper Marker

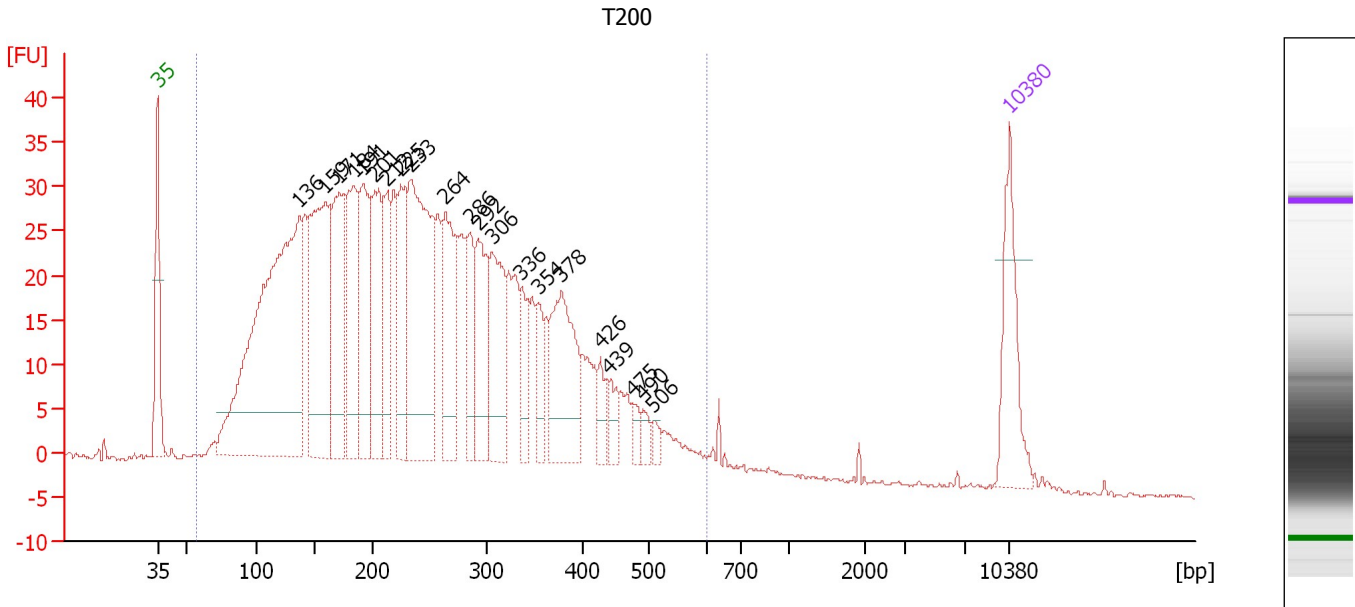
Region table for sample 7 : Miguel

From [bp]	To [bp]	Average Size [bp]	Molarity [pmol/l]	Conc. [pg/μl]	Co Corr. lor Area	% of Total	Size distribution in CV [%]
200	501	333	4,882.8	1,016.38	671.5	87	19.8

Assay Class: High Sensitivity DNA Assay
 Data Path: C:\... bioanalyzer\2100 expert\Data\2014-06-26\2014-06-26_001.xad

Created: 6/26/2014 7:47:26 AM
 Modified: 6/26/2014 8:24:22 AM

Electropherogram Summary Continued ...



Overall Results for sample 8 : T200

Number of peaks found: 21 Corr. Area 1: 1,252.1
 Noise: 0.2


Peak table for sample 8 : T200

Peak	Size [bp]	Conc. [pg/μl]	Molarity [pmol/l]	Observations
1	35	125.00	5,411.3	Lower Marker
2	136	695.45	7,723.5	
3	159	299.86	2,857.8	
4	171	170.97	1,516.3	
5	184	160.71	1,325.3	
6	191	155.69	1,232.0	
7	201	134.31	1,010.9	
8	212	93.84	671.0	
9	225	107.62	726.0	
10	233	309.27	2,015.1	
11	264	141.45	812.5	
12	286	70.87	375.4	
13	292	109.72	568.6	
14	306	120.82	598.3	
15	336	43.86	197.6	
16	354	38.70	165.8	
17	378	142.03	569.7	
18	426	26.83	95.4	
19	439	23.65	81.7	
20	475	13.49	43.1	
21	490	12.47	38.6	
22	506	9.98	29.9	
23	10,380	75.00	10.9	Upper Marker

Assay Class: High Sensitivity DNA Assay
Data Path: C:\... bioanalyzer\2100 expert\Data\2014-06-26\2014-06-26_001.xad

Created: 6/26/2014 7:47:26 AM
Modified: 6/26/2014 8:24:22 AM

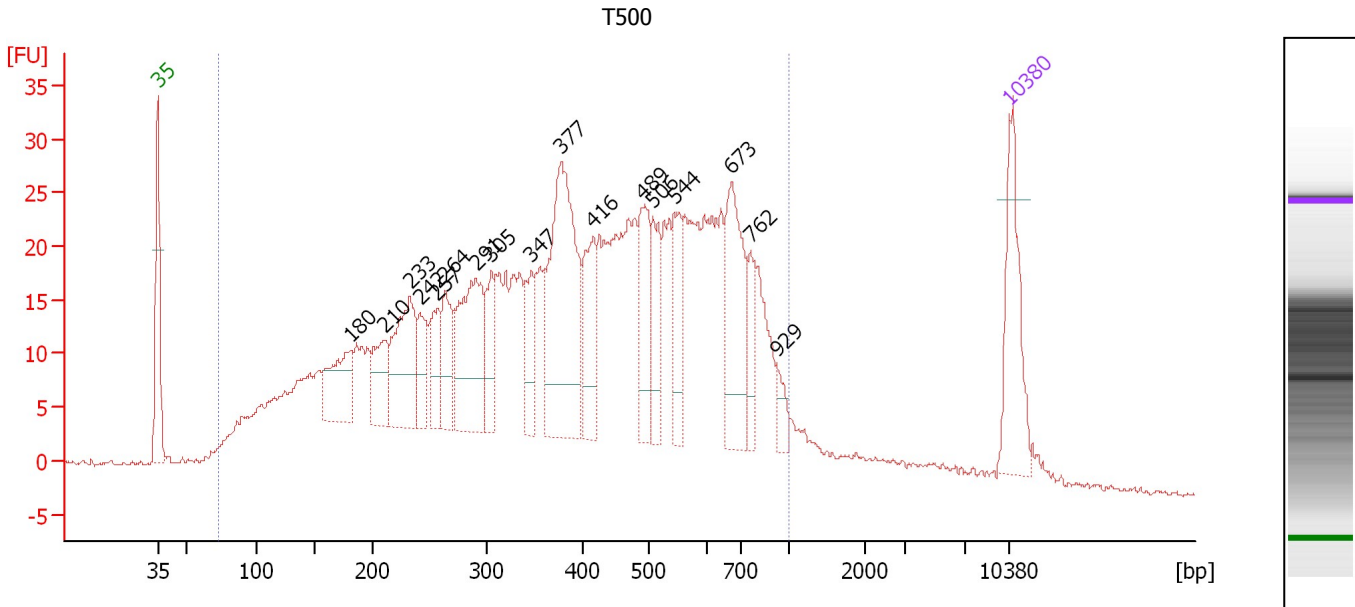
Electropherogram Summary Continued ...**... Region table for sample 8 : T200**

From [bp]	To [bp]	Average Size [bp]	Molarity [pmol/l]	Conc. [pg/μl]	Co Corr. lor Area	% of Total	Size distribution in CV [%]
56	605	251	30,174.0	3,752.13	 1,252.1	98	42.5

Assay Class: High Sensitivity DNA Assay
 Data Path: C:\... bioanalyzer\2100 expert\Data\2014-06-26\2014-06-26_001.xad

Created: 6/26/2014 7:47:26 AM
 Modified: 6/26/2014 8:24:22 AM

Electropherogram Summary Continued ...



Overall Results for sample 9 : T500

Number of peaks found: 17 Corr. Area 1: 1,047.4
 Noise: 0.3

Peak table for sample 9 : T500

Peak	Size [bp]	Conc. [pg/μl]	Molarity [pmol/l]	Observations
1	35	125.00	5,411.3	Lower Marker
2	180	80.18	673.8	
3	210	55.88	402.4	
4	233	118.96	774.9	
5	242	43.10	270.3	
6	257	43.43	256.1	
7	264	57.91	332.7	
8	291	137.97	719.0	
9	305	47.34	235.0	
10	347	44.75	195.7	
11	377	223.67	899.3	
12	416	68.89	251.1	
13	489	74.88	231.8	
14	506	50.59	151.6	
15	544	53.74	149.8	
16	673	112.77	253.7	
17	762	30.88	61.4	
18	929	15.76	25.7	
19	10,380	75.00	10.9	Upper Marker

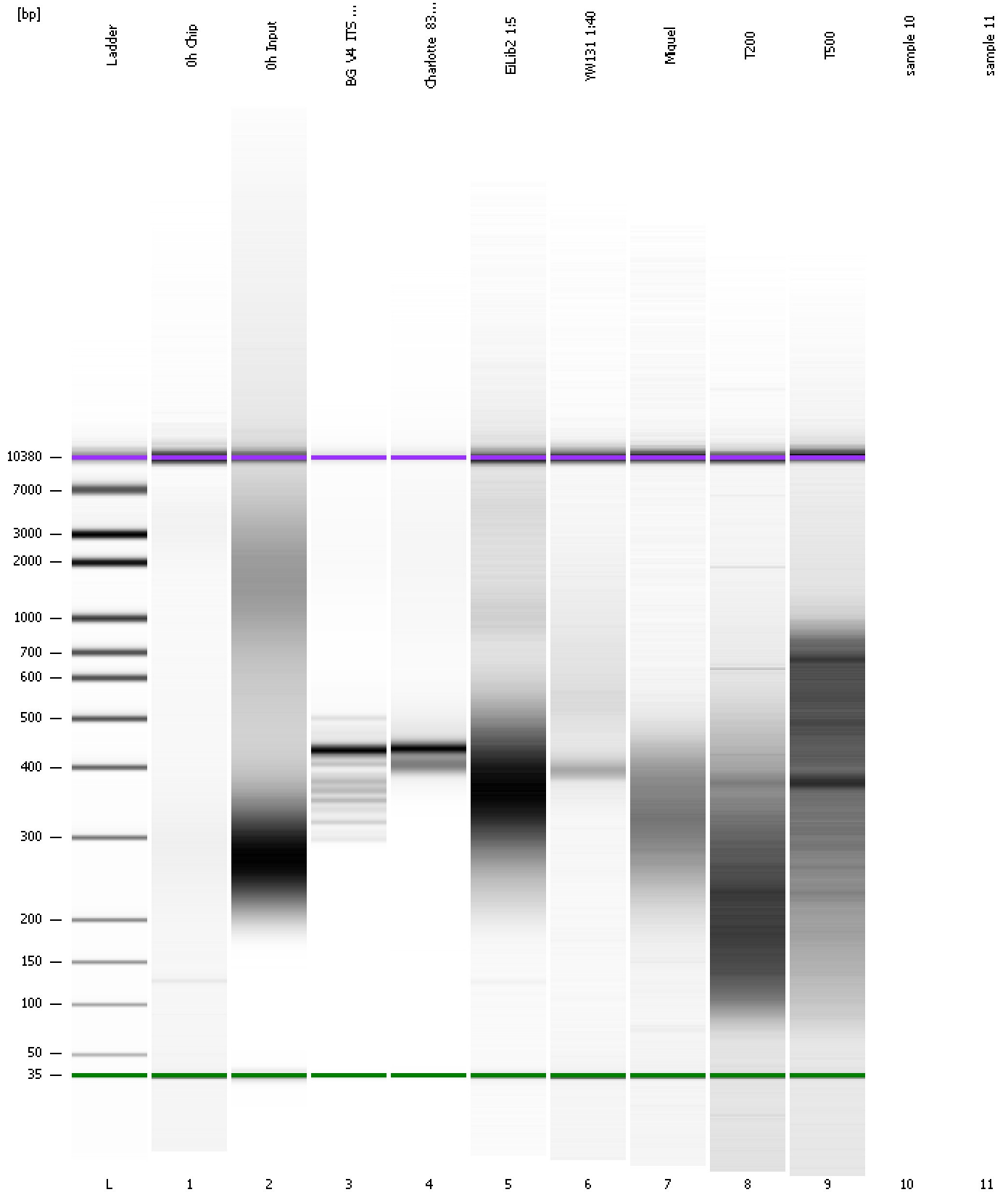
Region table for sample 9 : T500

From [bp]	To [bp]	Average Size [bp]	Molarity [pmol/l]	Conc. [pg/μl]	Co Corr. lor Area	% of Total	Size distribution in CV [%]
73	1,000	419	16,963.6	3,061.53	1,047.4	94	45.9

Assay Class: High Sensitivity DNA Assay
Data Path: C:\... bioanalyzer\2100 expert\Data\2014-06-26\2014-06-26_001.xad

Created: 6/26/2014 7:47:26 AM
Modified: 6/26/2014 8:24:22 AM

Gel Image



Assay Class: High Sensitivity DNA Assay
Data Path: C:\... bioanalyzer\2100 expert\Data\2014-06-26\2014-06-26_001.xad

Created: 6/26/2014 7:47:26 AM
Modified: 6/26/2014 8:24:22 AM

Invalid Samples

Sample 10 has not been run, no results available.

Sample 11 has not been run, no results available.