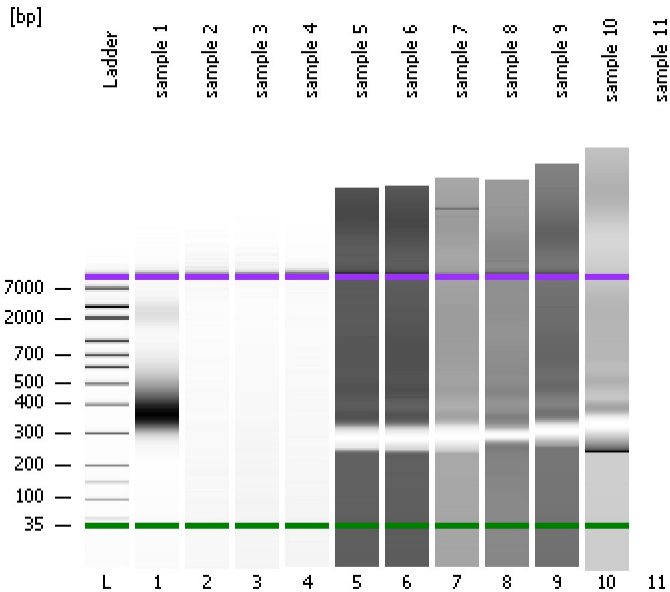


Assay Class: High Sensitivity DNA Assay
Data Path: C:\... bioanalyzer\2100 expert\Data\2014-07-01\2014-07-01_002.xad

Created: 7/1/2014 12:51:14 PM
Modified: 7/1/2014 1:29:42 PM

Electrophoresis File Run Summary



Instrument Information:

Instrument Name: DE13701086 Firmware: C.01.069
Serial#: DE13701086 Type: G2938B

Assay Information:

Assay Origin Path: C:\Program Files\Agilent\2100 bioanalyzer\2100 expert\assays\dsDNA\High Sensitivity DNA.xsy
Assay Class: High Sensitivity DNA Assay
Version: 1.03
Assay Comments: Copyright © 2003-2010 Agilent Technologies

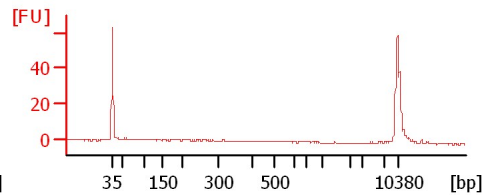
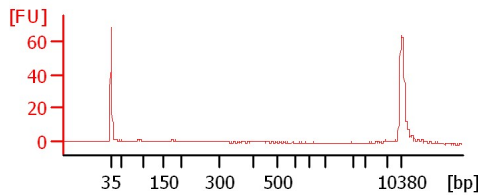
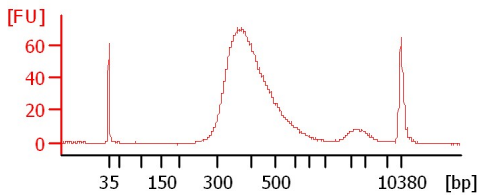
Chip Information:

Chip Lot #: Reagent Kit Lot #:
Chip Comments:

sample 1

sample 2

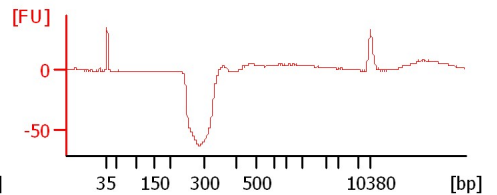
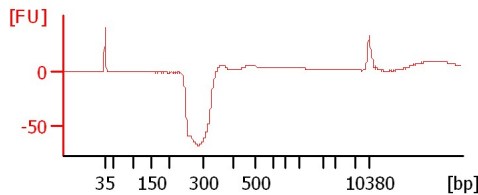
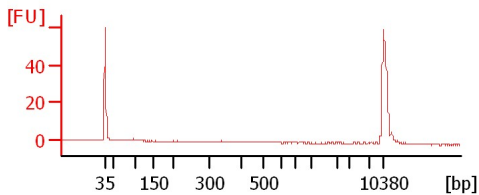
sample 3



sample 4

sample 5

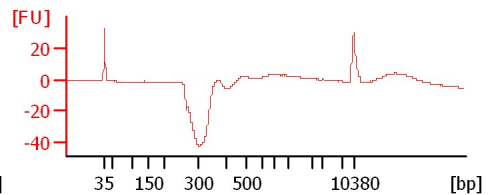
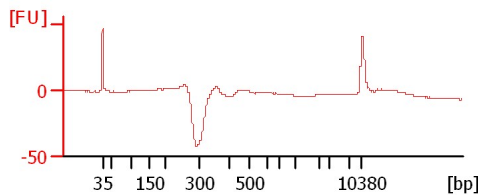
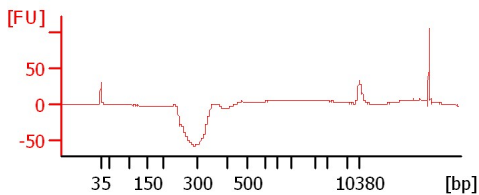
sample 6



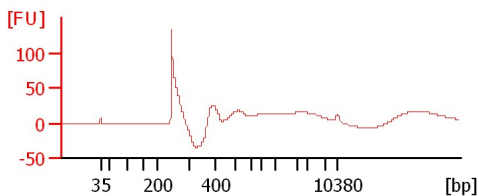
sample 7

sample 8

sample 9



sample 10



Assay Class: High Sensitivity DNA Assay
Data Path: C:\... bioanalyzer\2100 expert\Data\2014-07-01\2014-07-01_002.xad

Created: 7/1/2014 12:51:14 PM
Modified: 7/1/2014 1:29:42 PM

Electrophoresis File Run Summary (Chip Summary)

Sample Name	Sample Comment	Rest. Digest	Status	Observation	Result Label	Result Color
sample 1		<input type="checkbox"/>	✓			
sample 2		<input type="checkbox"/>	✓			
sample 3		<input type="checkbox"/>	✓			
sample 4		<input type="checkbox"/>	✓			
sample 5		<input type="checkbox"/>	✓			
sample 6		<input type="checkbox"/>	✓			
sample 7		<input type="checkbox"/>	✓			
sample 8		<input type="checkbox"/>	✓			
sample 9		<input type="checkbox"/>	✓			
sample 10		<input type="checkbox"/>	✓			
sample 11		<input type="checkbox"/>	✓			
Ladder		<input type="checkbox"/>	✓			

Chip Lot #

Reagent Kit Lot #

Chip Comments :

Assay Class: High Sensitivity DNA Assay
 Data Path: C:\... bioanalyzer\2100 expert\Data\2014-07-01\2014-07-01_002.xad

Created: 7/1/2014 12:51:14 PM
 Modified: 7/1/2014 1:29:42 PM

Electrophoresis Assay Details

General Analysis Settings

Number of Available Sample and Ladder Wells (Max.) : 12
 Minimum Visible Range [s] : 32
 Maximum Visible Range [s] : 138
 Start Analysis Time Range [s] : 33
 End Analysis Time Range [s] : 137.5
 Ladder Concentration [pg/μl] : 1950
 Uses Standard Area for Ladder Fragments
 Lower Marker Concentration [pg/μl] : 125
 Upper Marker Concentration [pg/μl] : 75
 Used Upper Marker for Quantitation
 Standard Curve Fit is Point to Point
 Show Data Aligned to Lower and Upper Marker

Integrator Settings

Integration Start Time [s] : 33.05
 Integration End Time [s] : 137
 Slope Threshold : 0.8
 Height Threshold [FU] : 5
 Area Threshold : 0.1
 Width Threshold [s] : 0.6
 Baseline Plateau [s] : 0.5

Filter Settings

Filter Width [s] : 0.5
 Polynomial Order : 4

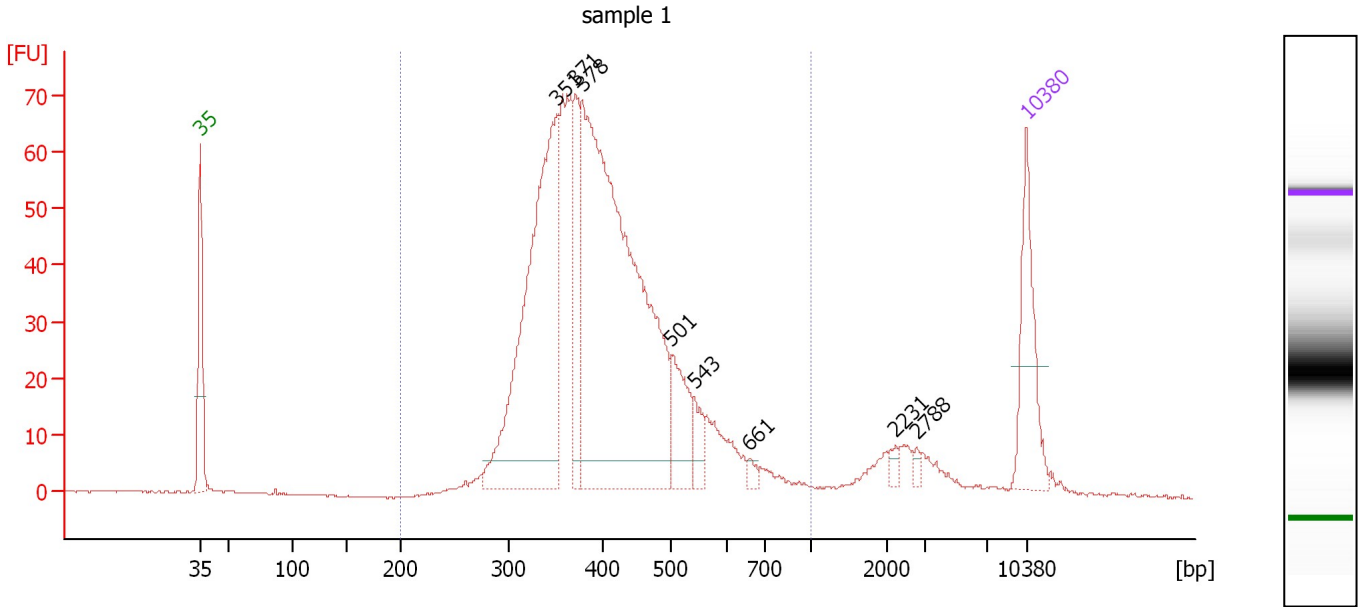
Ladder

Ladder Peak	Size	Area
1	35	160
2	50	210
3	100	208
4	150	221
5	200	242
6	300	270
7	400	305
8	500	306
9	600	336
10	700	321
11	1000	366
12	2000	413
13	3000	411
14	7000	400
15	10380	214

Assay Class: High Sensitivity DNA Assay
 Data Path: C:\... bioanalyzer\2100 expert\Data\2014-07-01\2014-07-01_002.xad

Created: 7/1/2014 12:51:14 PM
 Modified: 7/1/2014 1:29:42 PM

Electropherogram Summary



Overall Results for sample 1 : sample 1

Number of peaks found: 8 Corr. Area 1: 1,086.6
 Noise: 0.1

Peak table for sample 1 : sample 1

Peak	Size [bp]	Conc. [pg/μl]	Molarity [pmol/l]	Observations
1	35	125.00	5,411.3	Lower Marker
2	351	458.53	1,976.8	
3	371	93.96	384.2	
4	378	732.74	2,938.4	
5	501	71.17	215.1	
6	543	23.75	66.2	
7	661	7.16	16.4	
8	2,231	6.18	4.2	
9	2,788	4.50	2.4	
10	10,380	75.00	10.9	Upper Marker

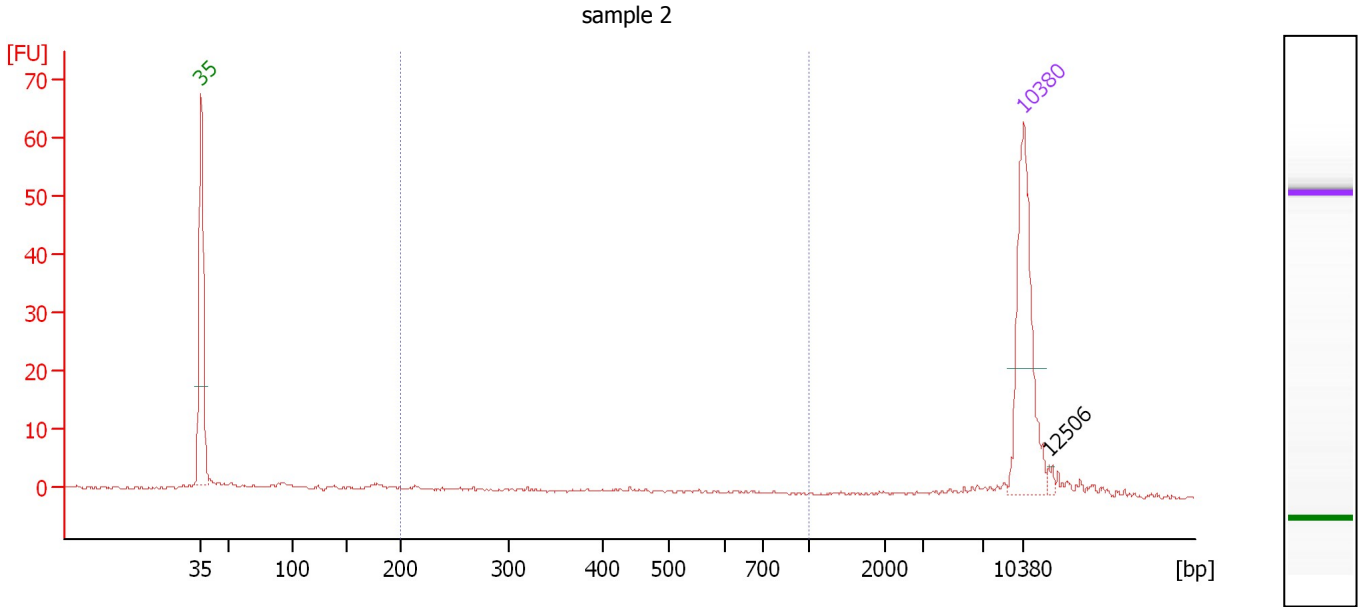
Region table for sample 1 : sample 1

From [bp]	To [bp]	Average Size [bp]	Molarity [pmol/l]	Conc. [pg/μl]	Co Corr. lor Area	% of Total	Size distribution in CV [%]
200	1,000	411	6,547.0	1,685.83	1,086.6	94	22.5

Assay Class: High Sensitivity DNA Assay
 Data Path: C:\... bioanalyzer\2100 expert\Data\2014-07-01\2014-07-01_002.xad

Created: 7/1/2014 12:51:14 PM
 Modified: 7/1/2014 1:29:42 PM

Electropherogram Summary Continued ...



Overall Results for sample 2 : sample 2

Number of peaks found: 1 Corr. Area 1: 5.8
 Noise: 0.2

Peak table for sample 2 : sample 2

Peak	Size [bp]	Conc. [pg/μl]	Molarity [pmol/l]	Observations
1	35	125.00	5,411.3	Lower Marker
2	10,380	75.00	10.9	Upper Marker
3	12,506	0.00	0.0	

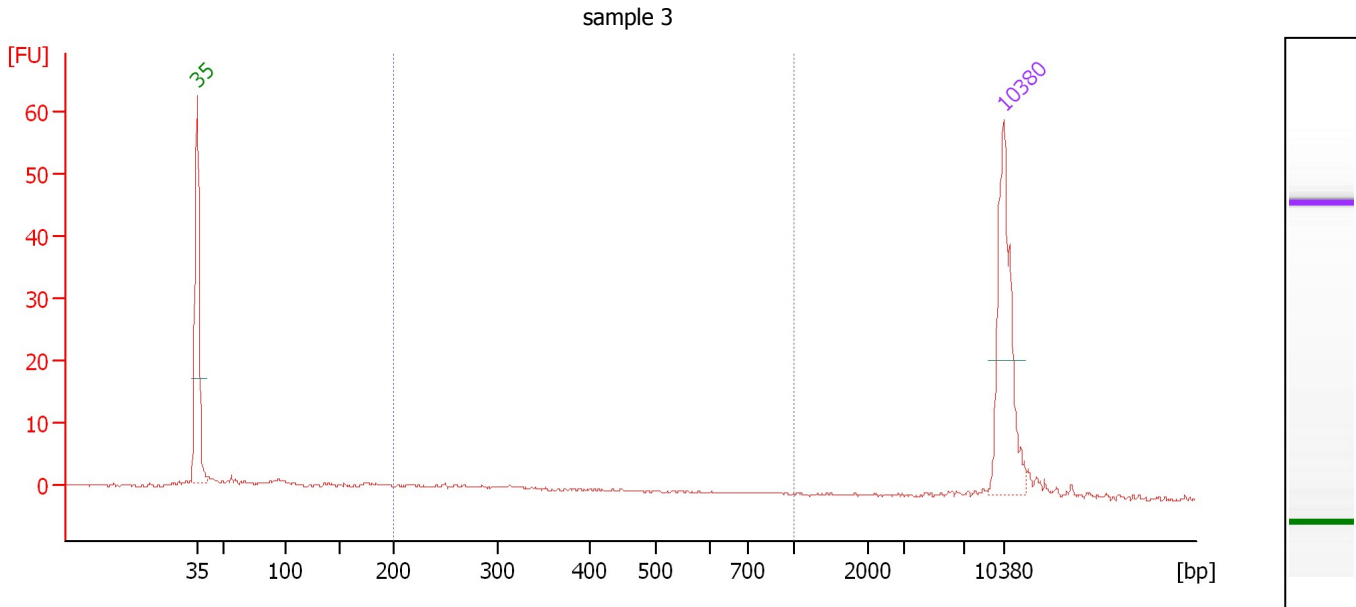
Region table for sample 2 : sample 2

From [bp]	To [bp]	Average Size [bp]	Molarity [pmol/l]	Conc. [pg/μl]	Co Corr. lor Area	% of Total	Size distribution in CV [%]
200	1,000	376	40.1	8.17	5.8	15	38.7

Assay Class: High Sensitivity DNA Assay
 Data Path: C:\... bioanalyzer\2100 expert\Data\2014-07-01\2014-07-01_002.xad

Created: 7/1/2014 12:51:14 PM
 Modified: 7/1/2014 1:29:42 PM

Electropherogram Summary Continued ...



Overall Results for sample 3 : sample 3

Number of peaks found: 0 Corr. Area 1: 15.6
 Noise: 0.2

Peak table for sample 3 : sample 3

Peak	Size [bp]	Conc. [pg/μl]	Molarity [pmol/l]	Observations
1	35	125.00	5,411.3	Lower Marker
2	10,380	75.00	10.9	Upper Marker

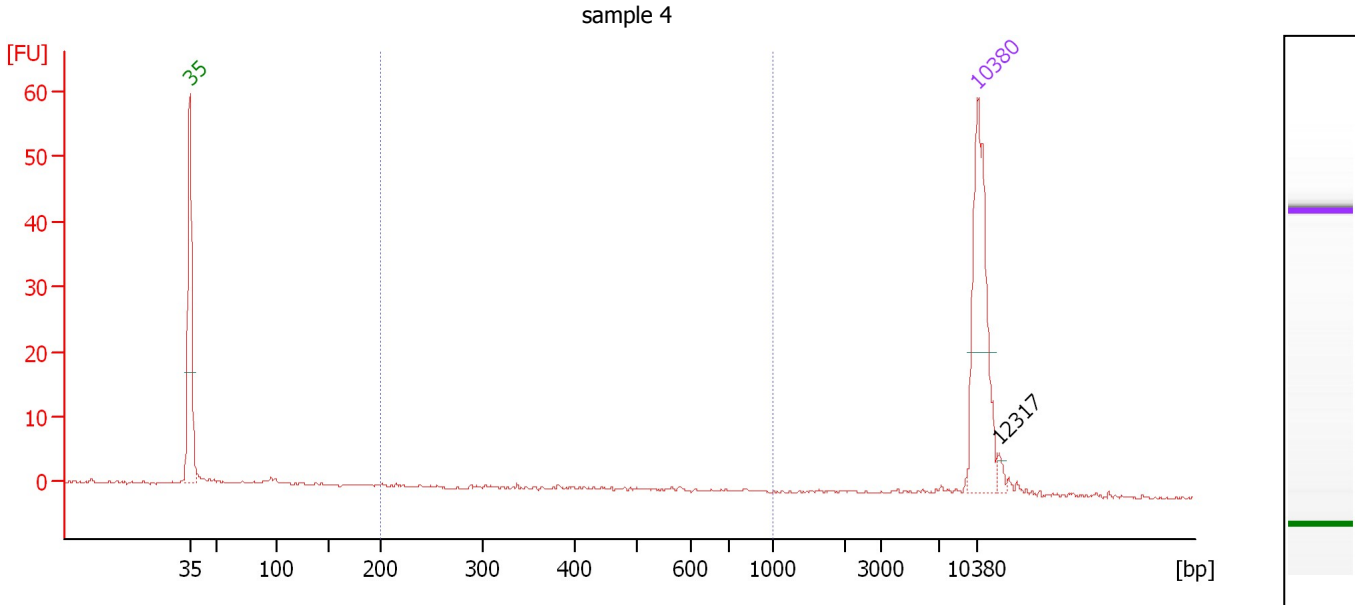
Region table for sample 3 : sample 3

From [bp]	To [bp]	Average Size [bp]	Molarity [pmol/l]	Conc. [pg/μl]	Co Corr. lor Area	% of Total	Size distribution in CV [%]
200	1,000	357	128.6	25.48	15.6	29	42.6

Assay Class: High Sensitivity DNA Assay
 Data Path: C:\... bioanalyzer\2100 expert\Data\2014-07-01\2014-07-01_002.xad

Created: 7/1/2014 12:51:14 PM
 Modified: 7/1/2014 1:29:42 PM

Electropherogram Summary Continued ...



Overall Results for sample 4 : sample 4

Number of peaks found: 1 Corr. Area 1: 4.3
 Noise: 0.2

Peak table for sample 4 : sample 4

Peak	Size [bp]	Conc. [pg/μl]	Molarity [pmol/l]	Observations
1	35	125.00	5,411.3	Lower Marker
2	10,380	75.00	10.9	Upper Marker
3	12,317	0.00	0.0	

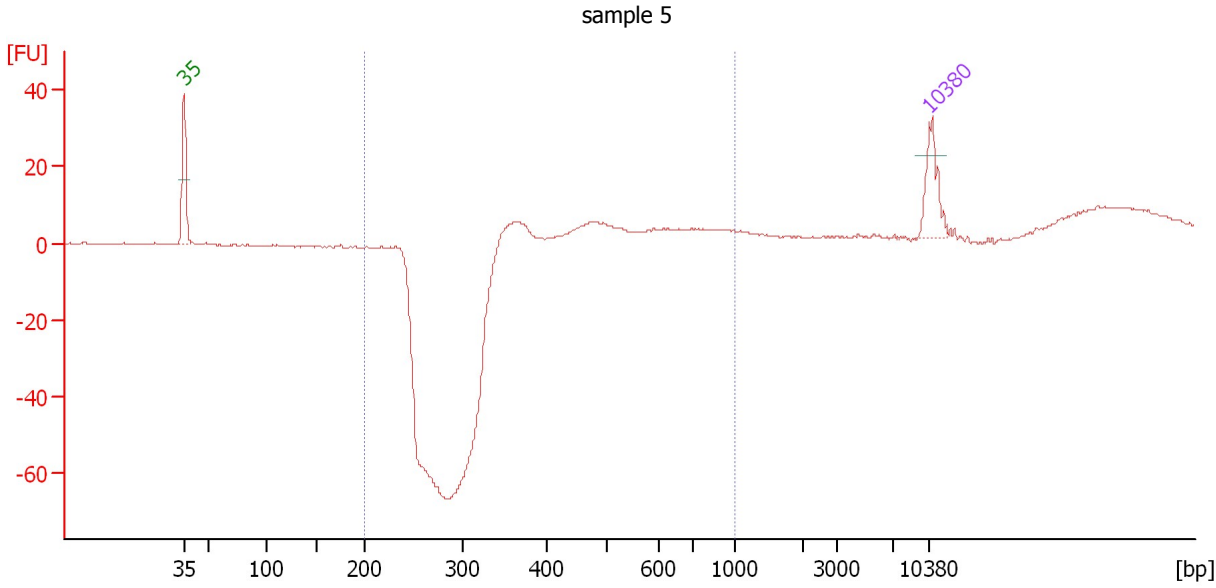
Region table for sample 4 : sample 4

From [bp]	To [bp]	Average Size [bp]	Molarity [pmol/l]	Conc. [pg/μl]	Co Corr. lor Area	% of Total	Size distribution in CV [%]
200	1,000	482	23.3	6.13	4.3	17	35.3

Assay Class: High Sensitivity DNA Assay
 Data Path: C:\... bioanalyzer\2100 expert\Data\2014-07-01\2014-07-01_002.xad

Created: 7/1/2014 12:51:14 PM
 Modified: 7/1/2014 1:29:42 PM

Electropherogram Summary Continued ...



Overall Results for sample 5 : sample 5

Number of peaks found: 0 Corr. Area 1: 30.7
 Noise: 0.2

Peak table for sample 5 : sample 5

Peak	Size [bp]	Conc. [pg/μl]	Molarity [pmol/l]	Observations
1	35	125.00	5,411.3	Lower Marker
2	10,380	75.00	10.9	Upper Marker

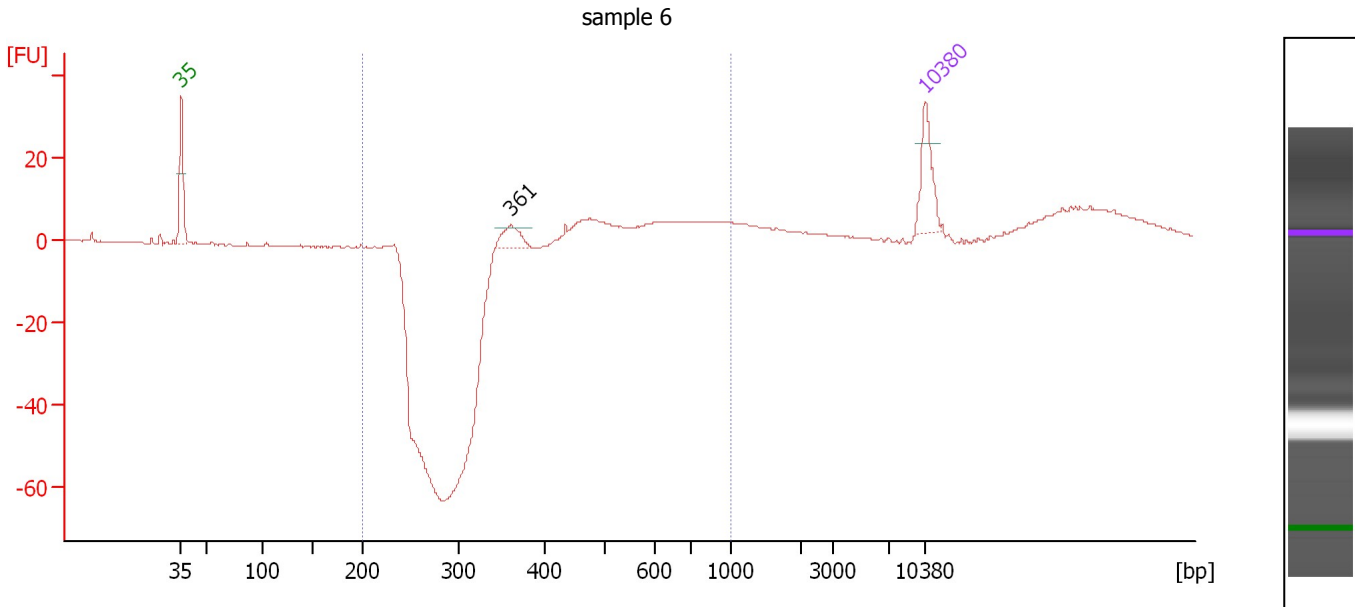
Region table for sample 5 : sample 5

From [bp]	To [bp]	Average Size [bp]	Molarity [pmol/l]	Conc. [pg/μl]	Co Corr. lor Area	% of Total	Size distribution in CV [%]
200	1,000	503	307.5	93.77	30.7	51	26.8

Assay Class: High Sensitivity DNA Assay
 Data Path: C:\... bioanalyzer\2100 expert\Data\2014-07-01\2014-07-01_002.xad

Created: 7/1/2014 12:51:14 PM
 Modified: 7/1/2014 1:29:42 PM

Electropherogram Summary Continued ...



Overall Results for sample 6 : sample 6

Number of peaks found: 1 Corr. Area 1: 65.2
 Noise: 0.1

Peak table for sample 6 : sample 6

Peak	Size [bp]	Conc. [pg/μl]	Molarity [pmol/l]	Observations
1	35	125.00	5,411.3	Lower Marker
2	361	49.70	208.7	
3	10,380	75.00	10.9	Upper Marker

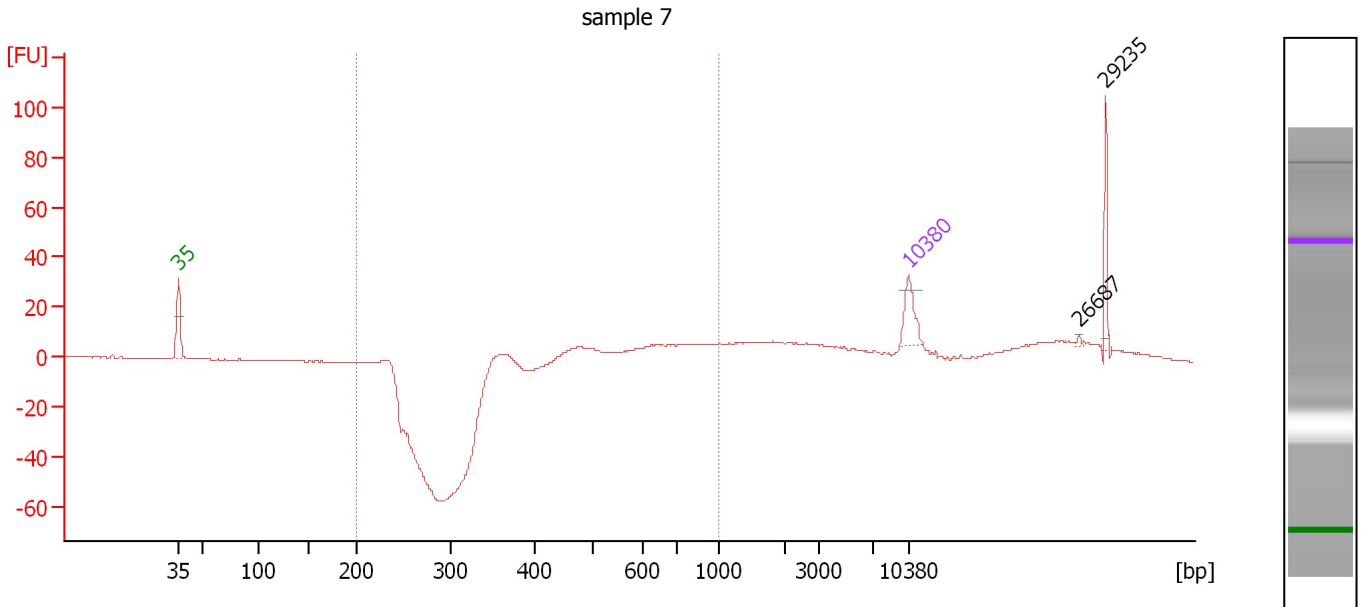
Region table for sample 6 : sample 6

From [bp]	To [bp]	Average Size [bp]	Molarity [pmol/l]	Conc. [pg/μl]	Co Corr. lor Area	% of Total	Size distribution in CV [%]
200	1,000	614	557.6	205.73	65.2	49	26.6

Assay Class: High Sensitivity DNA Assay
 Data Path: C:\... bioanalyzer\2100 expert\Data\2014-07-01\2014-07-01_002.xad

Created: 7/1/2014 12:51:14 PM
 Modified: 7/1/2014 1:29:42 PM

Electropherogram Summary Continued ...



Overall Results for sample 7 : sample 7

Number of peaks found: 2 Corr. Area 1: 78.6
 Noise: 0.2

Peak table for sample 7 : sample 7

Peak	Size [bp]	Conc. [pg/μl]	Molarity [pmol/l]	Observations
1	35	125.00	5,411.3	Lower Marker
2	10,380	75.00	10.9	Upper Marker
3	26,687	0.00	0.0	
4	29,235	0.00	0.0	

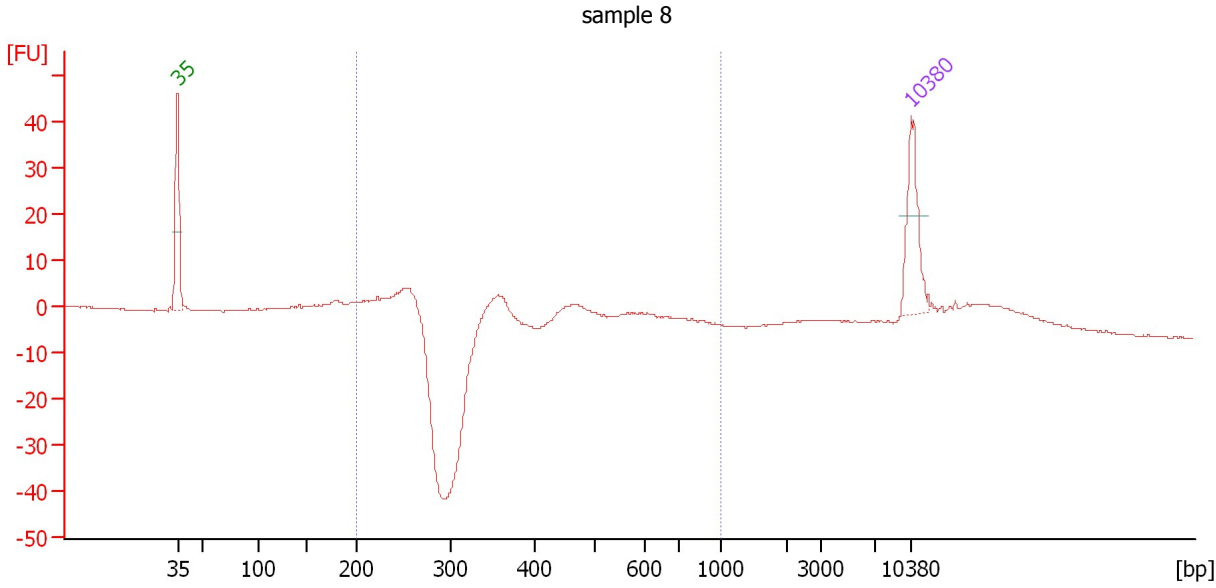
Region table for sample 7 : sample 7

From [bp]	To [bp]	Average Size [bp]	Molarity [pmol/l]	Conc. [pg/μl]	Co Corr. lor Area	% of Total	Size distribution in CV [%]
200	1,000	657	750.0	300.04	78.6	30	24.6

Assay Class: High Sensitivity DNA Assay
 Data Path: C:\... bioanalyzer\2100 expert\Data\2014-07-01\2014-07-01_002.xad

Created: 7/1/2014 12:51:14 PM
 Modified: 7/1/2014 1:29:42 PM

Electropherogram Summary Continued ...



Overall Results for sample 8 : sample 8

Number of peaks found: 0 Corr. Area 1: 81.1
 Noise: 0.1

Peak table for sample 8 : sample 8

Peak	Size [bp]	Conc. [pg/μl]	Molarity [pmol/l]	Observations
1	35	125.00	5,411.3	Lower Marker
2	10,380	75.00	10.9	Upper Marker

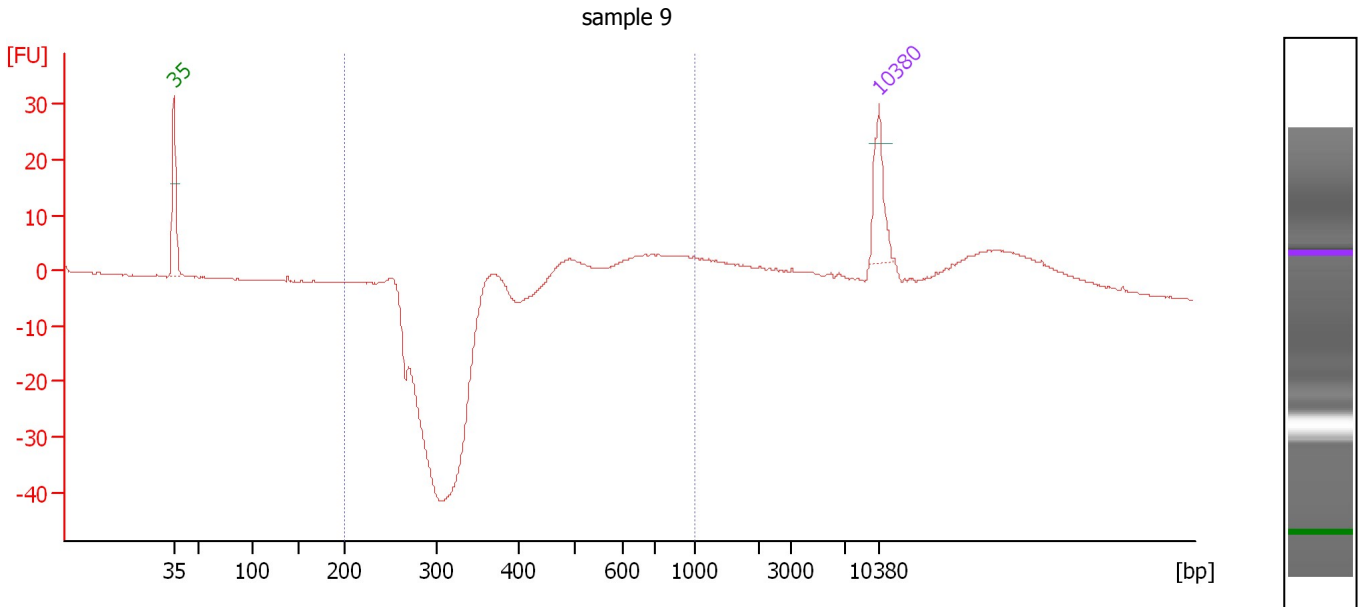
Region table for sample 8 : sample 8

From [bp]	To [bp]	Average Size [bp]	Molarity [pmol/l]	Conc. [pg/μl]	Co Corr. lor Area	% of Total	Size distribution in CV [%]
200	1,000	398	986.6	201.94	81.1	44	42.3

Assay Class: High Sensitivity DNA Assay
 Data Path: C:\... bioanalyzer\2100 expert\Data\2014-07-01\2014-07-01_002.xad

Created: 7/1/2014 12:51:14 PM
 Modified: 7/1/2014 1:29:42 PM

Electropherogram Summary Continued ...



Overall Results for sample 9 : sample 9

Number of peaks found: 0 Corr. Area 1: 73.2
 Noise: 0.1

Peak table for sample 9 : sample 9

Peak	Size [bp]	Conc. [pg/μl]	Molarity [pmol/l]	Observations
1	35	125.00	5,411.3	Lower Marker
2	10,380	75.00	10.9	Upper Marker

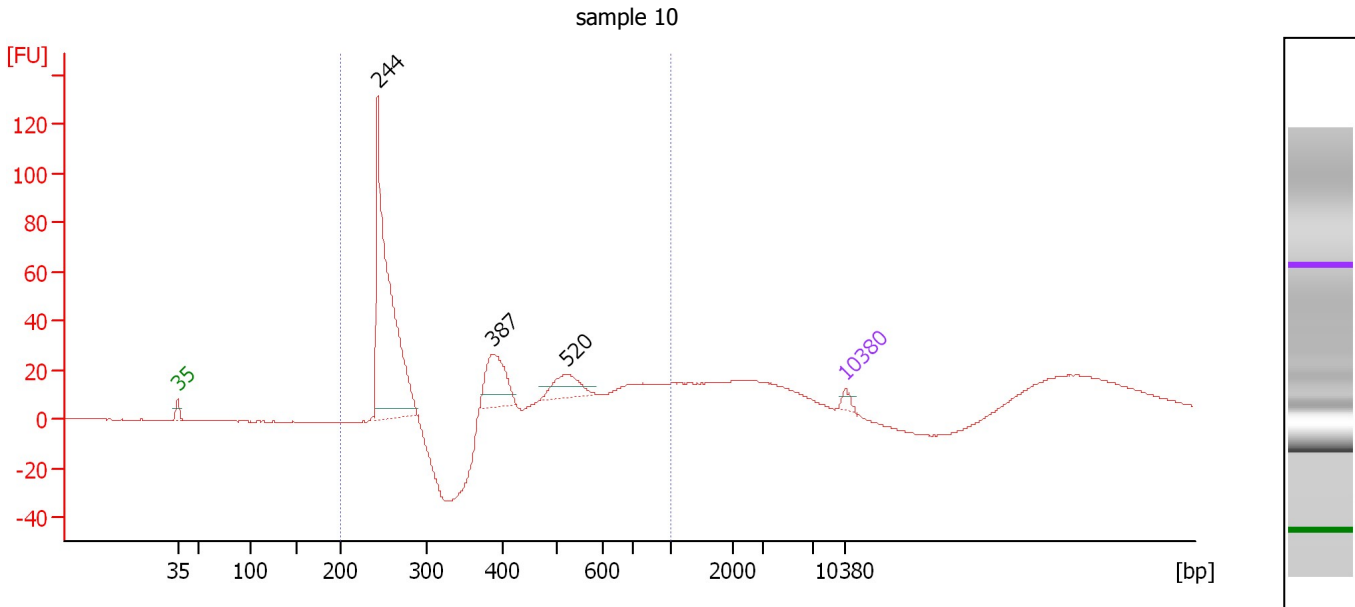
Region table for sample 9 : sample 9

From [bp]	To [bp]	Average Size [bp]	Molarity [pmol/l]	Conc. [pg/μl]	Co Corr. lor Area	% of Total	Size distribution in CV [%]
200	1,000	659	680.6	274.86	73.2	34	23.6

Assay Class: High Sensitivity DNA Assay
 Data Path: C:\... bioanalyzer\2100 expert\Data\2014-07-01\2014-07-01_002.xad

Created: 7/1/2014 12:51:14 PM
 Modified: 7/1/2014 1:29:42 PM

Electropherogram Summary Continued ...



Overall Results for sample 10 : sample 10

Number of peaks found: 3 Corr. Area 1: 515.1
 Noise: 0.1

Peak table for sample 10 : sample 10

Peak	Size [bp]	Conc. [pg/μl]	Molarity [pmol/l]	Observations
1	35	125.00	5,411.3	Lower Marker
2	244	4,870.71	30,217.3	
3	387	909.60	3,560.7	
4	520	503.62	1,466.5	
5	10,380	75.00	10.9	Upper Marker

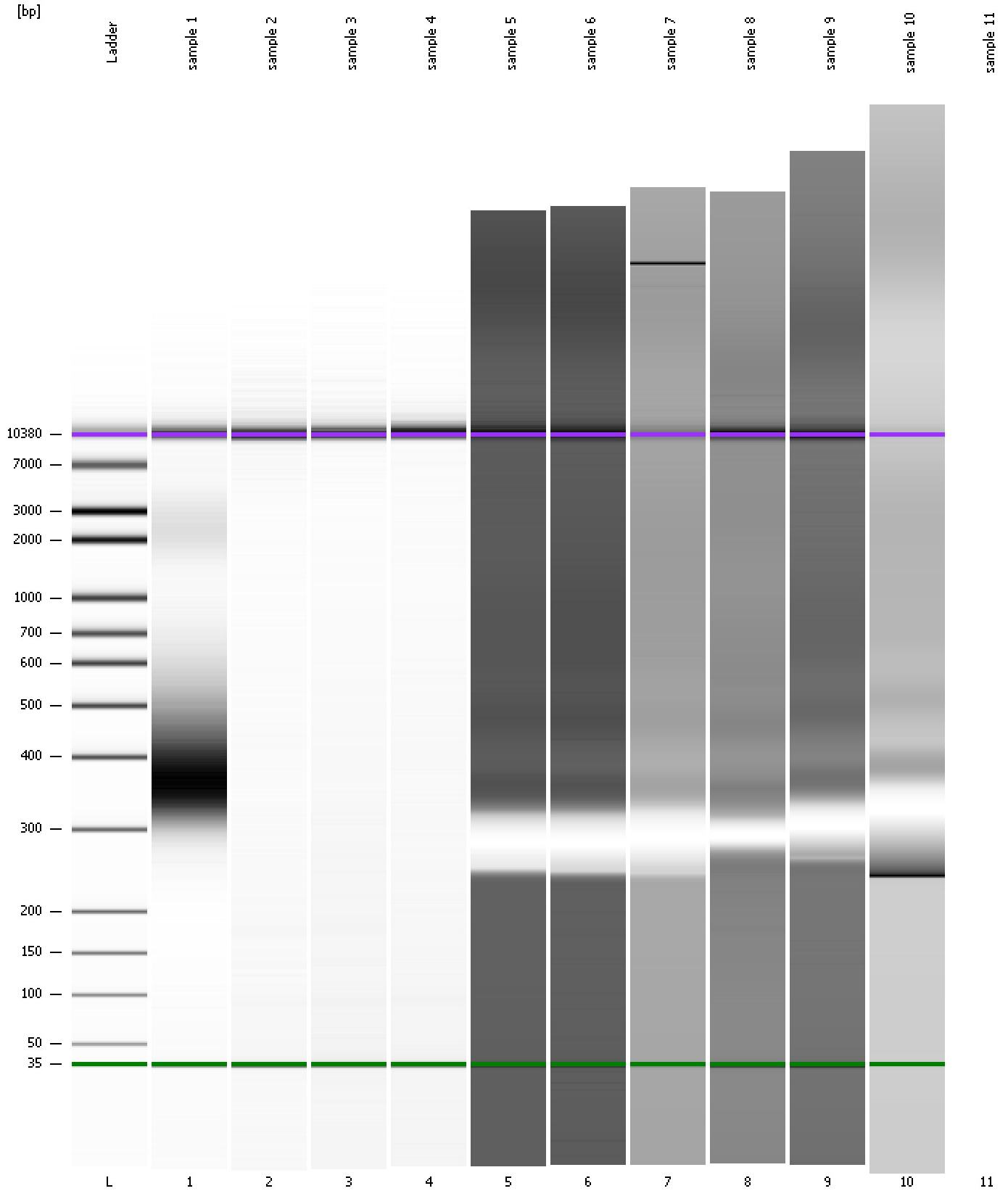
Region table for sample 10 : sample 10

From [bp]	To [bp]	Average Size [bp]	Molarity [pmol/l]	Conc. [pg/μl]	Co Corr. lor Area	% of Total	Size distribution in CV [%]
200	1,000	423	37,142.9	7,945.55	515.1	67	47.2

Assay Class: High Sensitivity DNA Assay
Data Path: C:\... bioanalyzer\2100 expert\Data\2014-07-01\2014-07-01_002.xad

Created: 7/1/2014 12:51:14 PM
Modified: 7/1/2014 1:29:42 PM

Gel Image



Assay Class: High Sensitivity DNA Assay
Data Path: C:\... bioanalyzer\2100 expert\Data\2014-07-01\2014-07-01_002.xad

Created: 7/1/2014 12:51:14 PM
Modified: 7/1/2014 1:29:42 PM

Invalid Samples

Sample 11 has not been run, no results available.