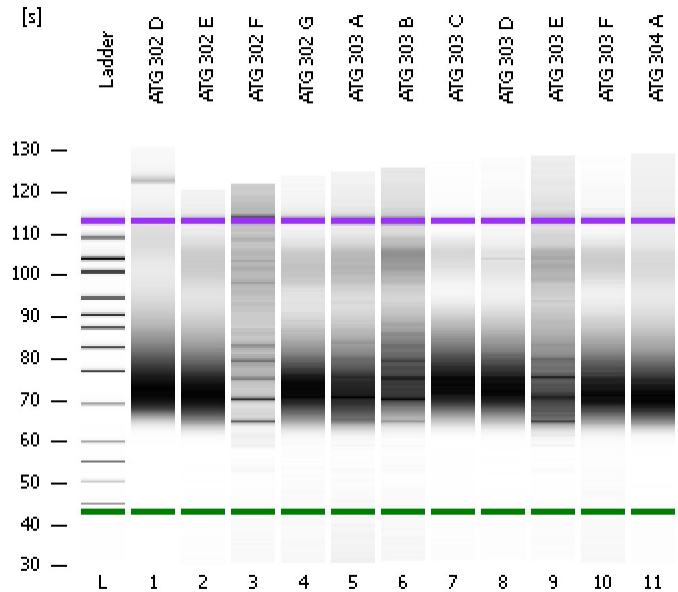


Assay Class: High Sensitivity DNA Assay
Data Path: C:\... bioanalyzer\2100 expert\Data\2014-07-16\2014-07-16_003.xad

Created: 7/16/2014 1:13:54 PM
Modified: 7/16/2014 1:54:26 PM

Electrophoresis File Run Summary



Instrument Information:

Instrument Name: DE13701086 Firmware: C.01.069
Serial#: DE13701086 Type: G2938B

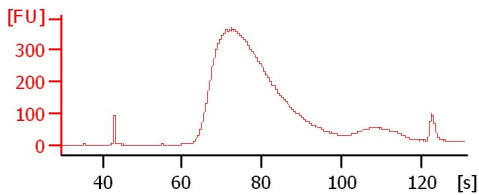
Assay Information:

Assay Origin Path: C:\Program Files\Agilent\2100 bioanalyzer\2100 expert\assays\dsDNA\High Sensitivity DNA.xsy
Assay Class: High Sensitivity DNA Assay
Version: 1.03
Assay Comments: Copyright © 2003-2010 Agilent Technologies

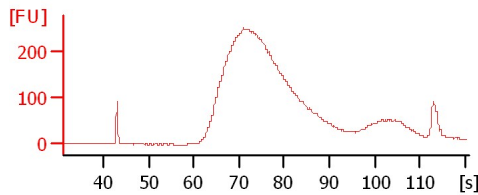
Chip Information:

Chip Lot #:
Reagent Kit Lot #:
Chip Comments:

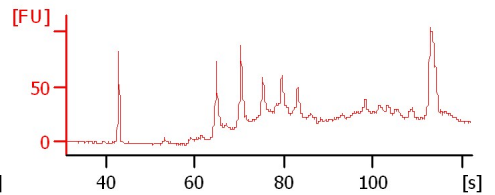
ATG 302 D



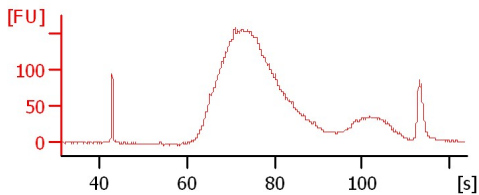
ATG 302 E



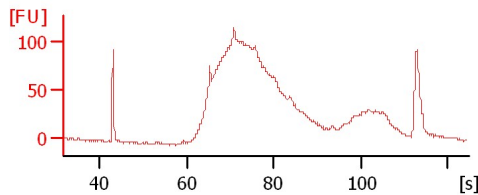
ATG 302 F



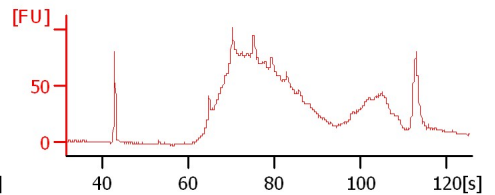
ATG 302 G



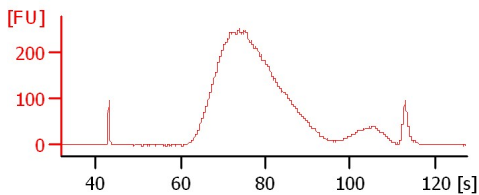
ATG 303 A



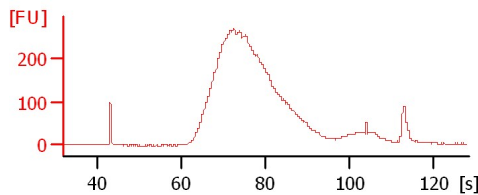
ATG 303 B



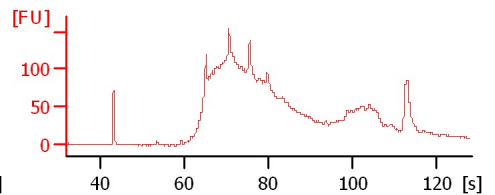
ATG 303 C



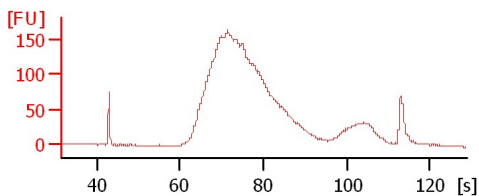
ATG 303 D



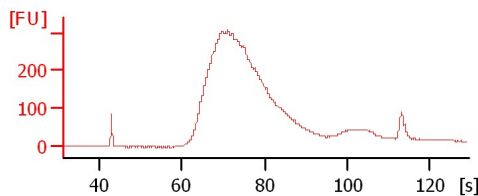
ATG 303 E



ATG 303 F



ATG 304 A



Assay Class: High Sensitivity DNA Assay
 Data Path: C:\... bioanalyzer\2100 expert\Data\2014-07-16\2014-07-16_003.xad

Created: 7/16/2014 1:13:54 PM
 Modified: 7/16/2014 1:54:26 PM

Electrophoresis File Run Summary (Chip Summary)

Sample Name	Sample Comment	Rest. Digest	Status	Observation	Result Label	Result Color
ATG 302 D		<input type="checkbox"/>	✓			
ATG 302 E		<input type="checkbox"/>	✓			
ATG 302 F		<input type="checkbox"/>	✓			
ATG 302 G		<input type="checkbox"/>	✓			
ATG 303 A		<input type="checkbox"/>	✓			
ATG 303 B		<input type="checkbox"/>	✓			
ATG 303 C		<input type="checkbox"/>	✓			
ATG 303 D		<input type="checkbox"/>	✓			
ATG 303 E		<input type="checkbox"/>	✓			
ATG 303 F		<input type="checkbox"/>	✓			
ATG 304 A		<input type="checkbox"/>	✓			
Ladder		<input type="checkbox"/>	✓			

Chip Lot #

Reagent Kit Lot #

Chip Comments :

Assay Class: High Sensitivity DNA Assay
Data Path: C:\... bioanalyzer\2100 expert\Data\2014-07-16\2014-07-16_003.xad

Created: 7/16/2014 1:13:54 PM
Modified: 7/16/2014 1:54:26 PM

Electrophoresis Assay Details

General Analysis Settings

Number of Available Sample and Ladder Wells (Max.) : 12
Minimum Visible Range [s] : 32
Maximum Visible Range [s] : 138
Start Analysis Time Range [s] : 33
End Analysis Time Range [s] : 137.5
Ladder Concentration [pg/μl] : 1950
Uses Standard Area for Ladder Fragments
Lower Marker Concentration [pg/μl] : 125
Upper Marker Concentration [pg/μl] : 75
Used Upper Marker for Quantitation
Standard Curve Fit is Point to Point
Show Data Aligned to Lower and Upper Marker

Integrator Settings

Integration Start Time [s] : 33.05
Integration End Time [s] : 137
Slope Threshold : 0.8
Height Threshold [FU] : 5
Area Threshold : 0.1
Width Threshold [s] : 0.6
Baseline Plateau [s] : 0.5

Filter Settings

Filter Width [s] : 0.5
Polynomial Order : 4

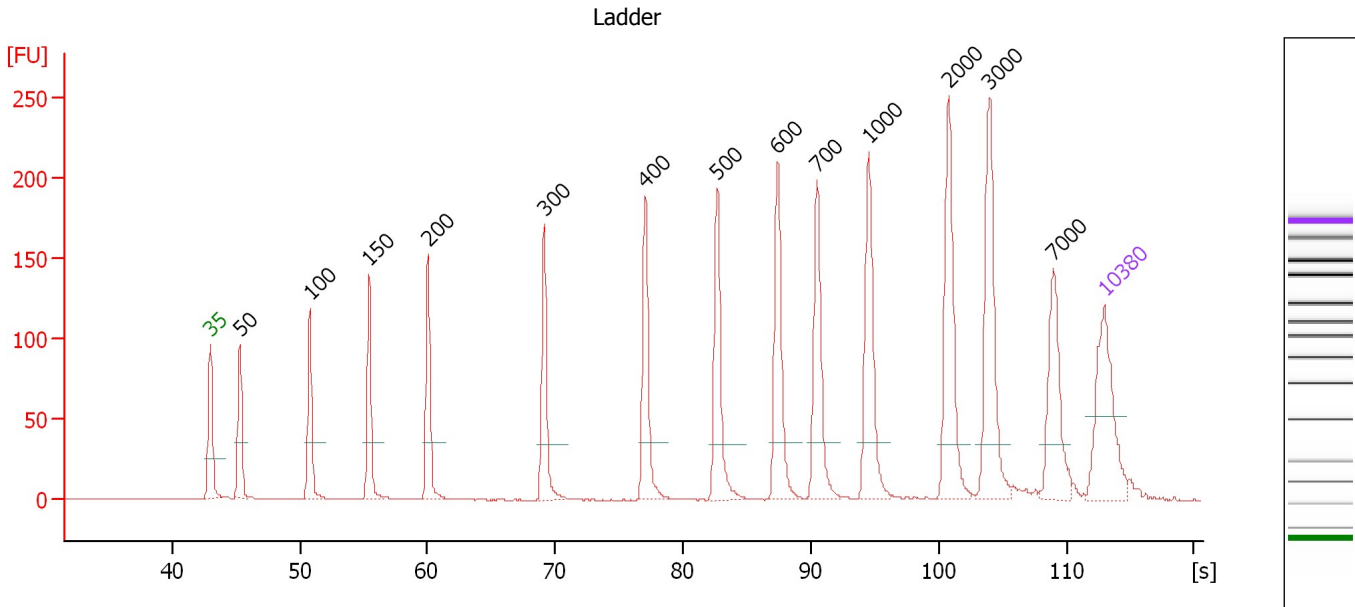
Ladder

Ladder Peak	Size	Area
1	35	160
2	50	210
3	100	208
4	150	221
5	200	242
6	300	270
7	400	305
8	500	306
9	600	336
10	700	321
11	1000	366
12	2000	413
13	3000	411
14	7000	400
15	10380	214

Assay Class: High Sensitivity DNA Assay
 Data Path: C:\... bioanalyzer\2100 expert\Data\2014-07-16\2014-07-16_003.xad

Created: 7/16/2014 1:13:54 PM
 Modified: 7/16/2014 1:54:26 PM

Electropherogram Summary



Overall Results for Ladder

Noise: 0.1

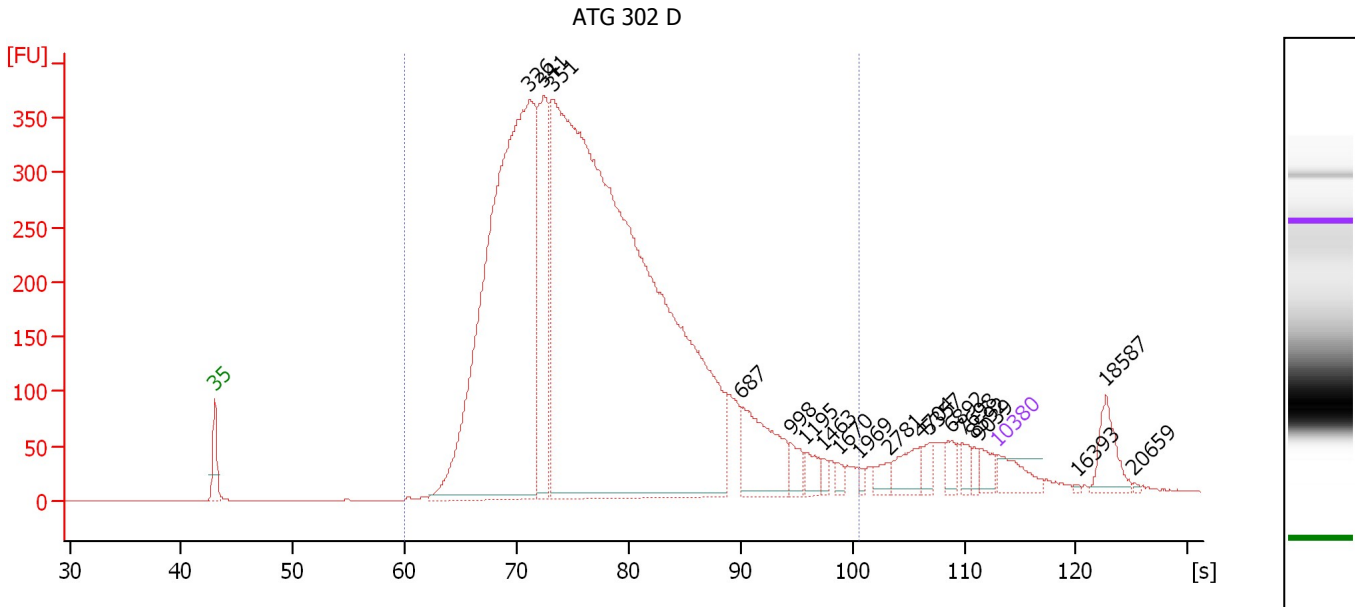
Peak table for Ladder

Peak	Size [bp]	Conc. [pg/μl]	Molarity [pmol/l]	Observations
1	35	125.00	5,411.3	Lower Marker
2	50	150.00	4,545.5	Ladder Peak
3	100	150.00	2,272.7	Ladder Peak
4	150	150.00	1,515.2	Ladder Peak
5	200	150.00	1,136.4	Ladder Peak
6	300	150.00	757.6	Ladder Peak
7	400	150.00	568.2	Ladder Peak
8	500	150.00	454.5	Ladder Peak
9	600	150.00	378.8	Ladder Peak
10	700	150.00	324.7	Ladder Peak
11	1,000	150.00	227.3	Ladder Peak
12	2,000	150.00	113.6	Ladder Peak
13	3,000	150.00	75.8	Ladder Peak
14	7,000	150.00	32.5	Ladder Peak
15	10,380	75.00	10.9	Upper Marker

Assay Class: High Sensitivity DNA Assay
 Data Path: C:\... bioanalyzer\2100 expert\Data\2014-07-16\2014-07-16_003.xad

Created: 7/16/2014 1:13:54 PM
 Modified: 7/16/2014 1:54:26 PM

Electropherogram Summary Continued ...



Overall Results for sample 1 : ATG 302 D

Number of peaks found: 19 Corr. Area 1: 8,264.7
 Noise: 0.2

Peak table for sample 1 : ATG 302 D

Peak	Size [bp]	Conc. [pg/μl]	Molarity [pmol/l]	Observations
1	35	125.00	5,411.3	Lower Marker
2	326	3,237.85	15,071.6	
3	341	688.43	3,057.0	
4	351	6,073.74	26,182.3	
5	687	336.06	741.3	
6	998	58.77	89.2	
7	1,195	54.16	68.7	
8	1,463	19.34	20.0	
9	1,670	22.15	20.1	
10	1,969	13.30	10.2	
11	2,781	38.97	21.2	
12	4,704	82.72	26.6	
13	5,357	37.68	10.7	
14	6,892	42.76	9.4	
15	7,698	35.79	7.0	
16	8,592	20.29	3.6	
17	9,039	43.70	7.3	
18	10,380	75.00	10.9	Upper Marker
19	16,393	0.00	0.0	
20	18,587	0.00	0.0	
21	20,659	0.00	0.0	

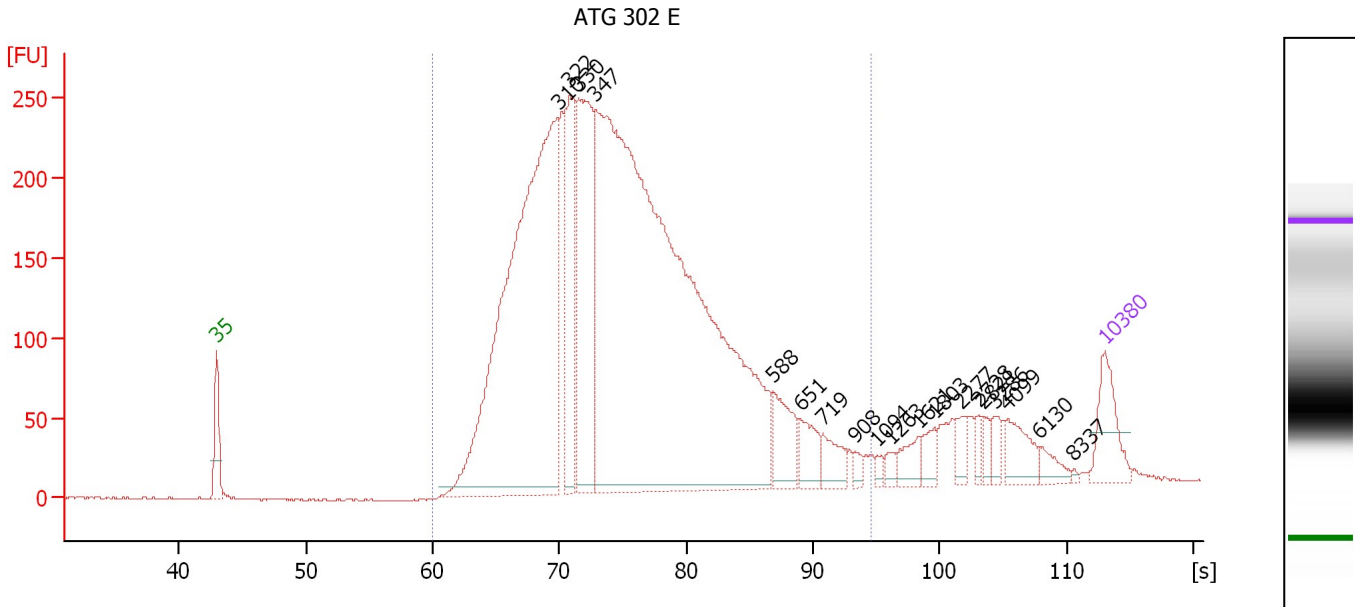
Region table for sample 1 : ATG 302 D

From [s]	To [s]	Average Size [bp]	Molarity [pmol/l]	Conc. [pg/μl]	Co Corr. lor Area	% of Total	Size distribution in CV [%]
60.03	100.53	446	40,184.8	10,052.08	8,264.7	93	49.3

Assay Class: High Sensitivity DNA Assay
 Data Path: C:\... bioanalyzer\2100 expert\Data\2014-07-16\2014-07-16_003.xad

Created: 7/16/2014 1:13:54 PM
 Modified: 7/16/2014 1:54:26 PM

Electropherogram Summary Continued ...



Overall Results for sample 2 : ATG 302 E

Number of peaks found: 19 Corr. Area 1: 5,650.7
 Noise: 0.3

Peak table for sample 2 : ATG 302 E

Peak	Size [bp]	Conc. [pg/μl]	Molarity [pmol/l]	Observations
1	35	125.00	5,411.3	Lower Marker
2	310	1,516.66	7,416.5	
3	322	307.33	1,448.0	
4	330	472.32	2,167.9	
5	347	2,703.01	11,797.3	
6	588	101.43	261.4	
7	651	62.47	145.4	
8	719	54.96	115.8	
9	908	13.47	22.5	
10	1,094	10.15	14.1	
11	1,263	14.69	17.6	
12	1,621	34.08	31.9	
13	1,803	29.24	24.6	
14	2,277	25.84	17.2	
15	2,728	15.22	8.5	
16	2,821	17.14	9.2	
17	3,286	24.73	11.4	
18	4,099	55.10	20.4	
19	6,130	23.74	5.9	
20	8,337	2.44	0.4	
21	10,380	75.00	10.9	Upper Marker

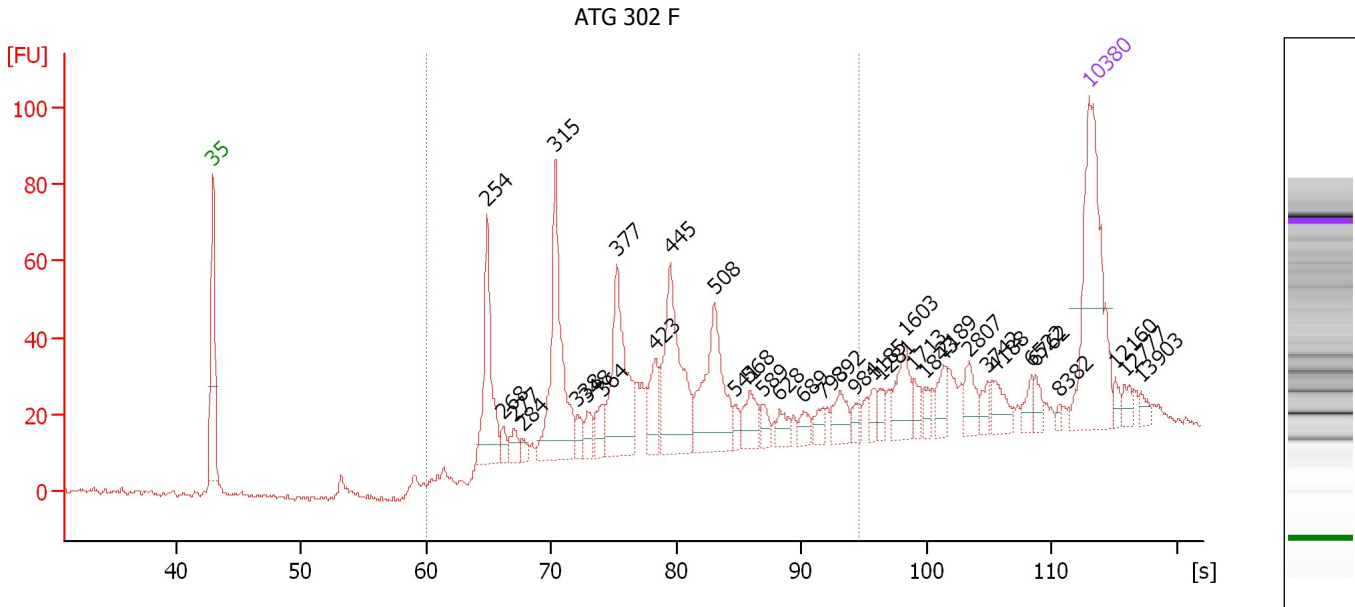
Region table for sample 2 : ATG 302 E

From [s]	To [s]	Average Size [bp]	Molarity [pmol/l]	Conc. [pg/μl]	Co lor	Corr. Area	% of Total	Size distribution in CV [%]
60.03	94.54	390	22,095.2	5,146.30	■	5,650.7	92	30.4

Assay Class: High Sensitivity DNA Assay
 Data Path: C:\... bioanalyzer\2100 expert\Data\2014-07-16\2014-07-16_003.xad

Created: 7/16/2014 1:13:54 PM
 Modified: 7/16/2014 1:54:26 PM

Electropherogram Summary Continued ...



Overall Results for sample 3 : ATG 302 F

Number of peaks found: 35 Corr. Area 1: 693.5
 Noise: 0.7

Peak table for sample 3 : ATG 302 F

Peak	Size [bp]	Conc. [pg/μl]	Molarity [pmol/l]	Observations
1	35	125.00	5,411.3	Lower Marker
2	254	67.33	402.4	
3	268	7.11	40.2	
4	277	9.83	53.7	
5	284	4.87	26.0	
6	315	98.70	474.0	
7	338	8.58	38.5	
8	348	10.57	46.1	
9	364	13.47	56.1	
10	377	71.84	288.7	
11	423	22.95	82.3	
12	445	77.06	262.6	
13	508	65.91	196.4	
14	541	5.74	16.1	
15	568	17.24	46.0	
16	589	7.49	19.3	
17	628	8.37	20.2	
18	689	7.81	17.2	
19	793	6.67	12.8	
20	892	13.61	23.1	
21	984	5.53	8.5	
22	1,185	6.37	8.1	
23	1,281	5.55	6.6	
24	1,603	19.76	18.7	
25	1,713	6.19	5.5	
26	1,843	4.48	3.7	

Assay Class: High Sensitivity DNA Assay
 Data Path: C:\... bioanalyzer\2100 expert\Data\2014-07-16\2014-07-16_003.xad

Created: 7/16/2014 1:13:54 PM
 Modified: 7/16/2014 1:54:26 PM

Electropherogram Summary Continued ...

... Peak table for sample 3 : ATG 302 F

Peak	Size [bp]	Conc. [pg/µl]	Molarity [pmol/l]	Observations
27	2,189	9.66	6.7	
28	2,807	11.92	6.4	
29	3,742	5.62	2.3	
30	4,188	10.79	3.9	
31	6,522	5.72	1.3	
32	6,762	5.61	1.3	
33	8,382	1.85	0.3	
34	10,380	75.00	10.9	Upper Marker
35	12,160	0.00	0.0	
36	12,777	0.00	0.0	
37	13,903	0.00	0.0	

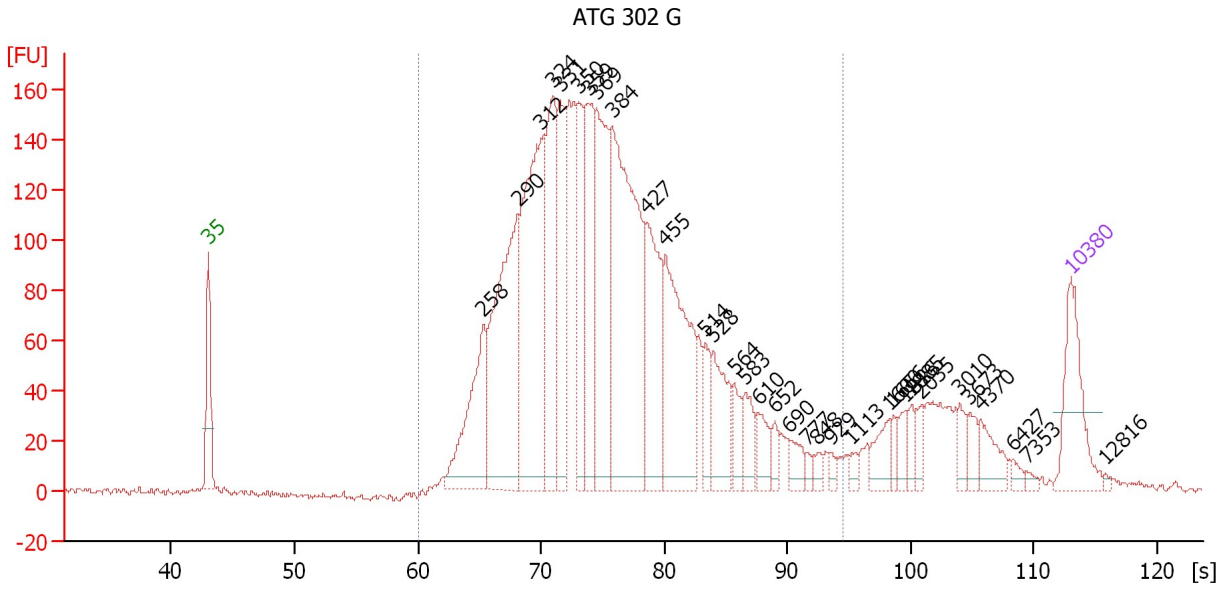
Region table for sample 3 : ATG 302 F

From [s]	To [s]	Average Size [bp]	Molarity [pmol/l]	Conc. [pg/µl]	Co lor	Corr. Area % of Total	Size distribution in CV [%]	
60.03	94.54	446	2,251.5	571.04	■	693.5	74	35.4

Assay Class: High Sensitivity DNA Assay
 Data Path: C:\... bioanalyzer\2100 expert\Data\2014-07-16\2014-07-16_003.xad

Created: 7/16/2014 1:13:54 PM
 Modified: 7/16/2014 1:54:26 PM

Electropherogram Summary Continued ...



Overall Results for sample 4 : ATG 302 G

Number of peaks found: 33 Corr. Area 1: 3,504.6
 Noise: 1.4

Peak table for sample 4 : ATG 302 G

Peak	Size [bp]	Conc. [pg/μl]	Molarity [pmol/l]	Observations
1	35	125.00	5,411.3	Lower Marker
2	258	171.95	1,008.2	
3	290	340.59	1,778.9	
4	312	360.54	1,752.4	
5	324	224.10	1,048.6	
6	331	143.56	656.2	
7	350	111.89	484.1	
8	359	168.07	708.4	
9	369	220.67	906.5	
10	384	415.36	1,638.1	
11	427	164.43	583.1	
12	455	224.84	748.5	
13	514	40.92	120.6	
14	528	79.53	228.3	
15	564	29.58	79.5	
16	583	34.95	90.8	
17	610	29.19	72.5	
18	652	15.09	35.1	
19	690	22.56	49.6	
20	777	7.21	14.1	
21	848	10.04	17.9	
22	929	6.46	10.5	
23	1,113	8.22	11.2	
24	1,600	26.28	24.9	
25	1,656	11.21	10.3	
26	1,816	16.08	13.4	

Assay Class: High Sensitivity DNA Assay
 Data Path: C:\... bioanalyzer\2100 expert\Data\2014-07-16\2014-07-16_003.xad


Created: 7/16/2014 1:13:54 PM
 Modified: 7/16/2014 1:54:26 PM

Electropherogram Summary Continued ...

... Peak table for sample 4 : ATG 302 G

Peak	Size [bp]	Conc. [pg/μl]	Molarity [pmol/l]	Observations
27	1,885	13.13	10.5	
28	2,035	13.00	9.7	
29	3,010	15.65	7.9	
30	3,673	16.68	6.9	
31	4,370	29.79	10.3	
32	6,427	7.06	1.7	
33	7,353	4.07	0.8	
34	10,380	75.00	10.9	Upper Marker
35	12,816	0.00	0.0	

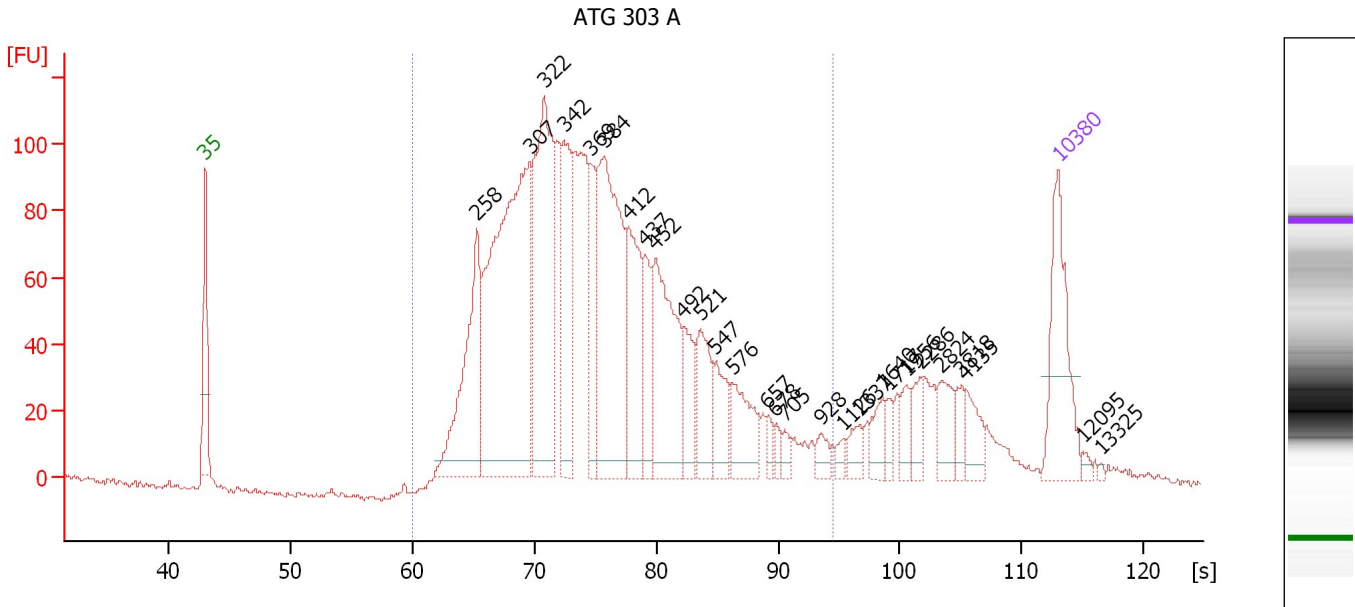
Region table for sample 4 : ATG 302 G

From [s]	To [s]	Average Size [bp]	Molarity [pmol/l]	Conc. [pg/μl]	Co lor	Corr. Area Total	% of Total	Size distribution in CV [%]
60.03	94.54	395	13,190.2	3,116.61		3,504.6	89	30.0

Assay Class: High Sensitivity DNA Assay
 Data Path: C:\... bioanalyzer\2100 expert\Data\2014-07-16\2014-07-16_003.xad

Created: 7/16/2014 1:13:54 PM
 Modified: 7/16/2014 1:54:26 PM

Electropherogram Summary Continued ...



Overall Results for sample 5 : ATG 303 A

Number of peaks found: 28 Corr. Area 1: 2,483.5
 Noise: 1.1

Peak table for sample 5 : ATG 303 A

Peak	Size [bp]	Conc. [pg/μl]	Molarity [pmol/l]	Observations
1	35	125.00	5,411.3	Lower Marker
2	258	173.37	1,018.3	
3	307	440.02	2,172.8	
4	322	250.99	1,181.7	
5	342	110.05	487.9	
6	369	67.79	278.0	
7	384	234.32	924.8	
8	412	105.42	388.0	
9	437	52.07	180.7	
10	452	146.00	489.9	
11	492	40.95	126.0	
12	521	58.11	169.1	
13	547	39.16	108.5	
14	576	50.31	132.4	
15	657	9.68	22.3	
16	678	7.75	17.3	
17	705	9.44	20.3	
18	928	11.33	18.5	
19	1,126	6.49	8.7	
20	1,337	13.35	15.1	
21	1,640	18.30	16.9	
22	1,717	10.29	9.1	
23	1,956	15.63	12.1	
24	2,286	16.48	10.9	
25	2,824	25.57	13.7	
26	3,818	12.98	5.2	

Assay Class: High Sensitivity DNA Assay
 Data Path: C:\... bioanalyzer\2100 expert\Data\2014-07-16\2014-07-16_003.xad

Created: 7/16/2014 1:13:54 PM
 Modified: 7/16/2014 1:54:26 PM

Electropherogram Summary Continued ...

... Peak table for sample 5 : ATG 303 A

Peak	Size [bp]	Conc. [pg/μl]	Molarity [pmol/l]	Observations
27	4,135	21.27	7.8	
28	10,380	75.00	10.9	Upper Marker
29	12,095	0.00	0.0	
30	13,325	0.00	0.0	

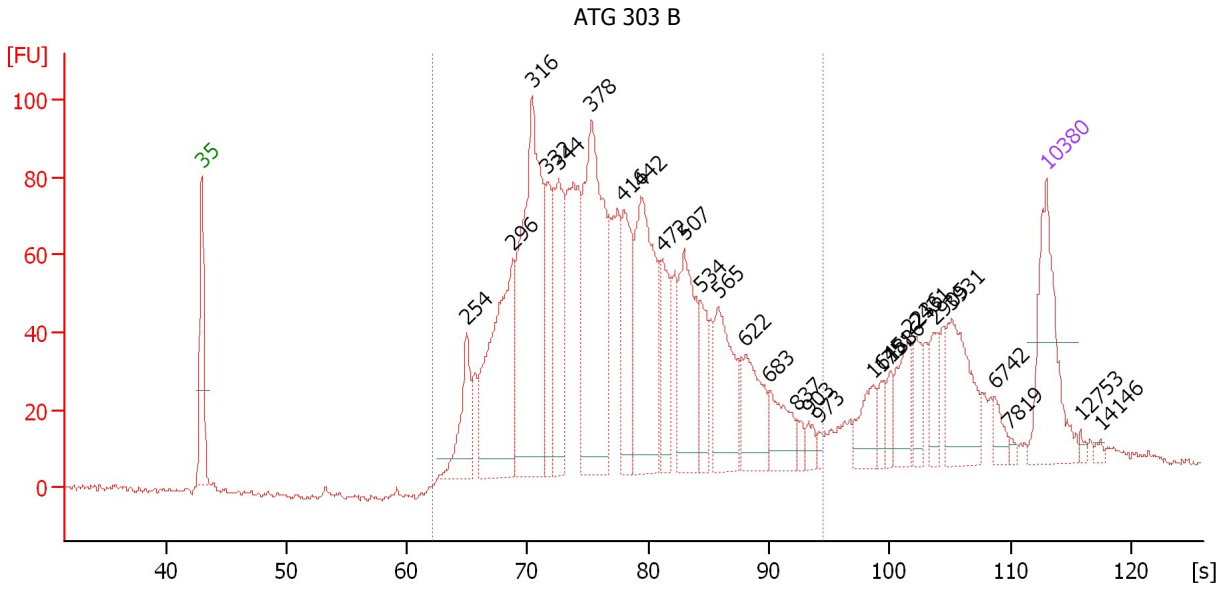
Region table for sample 5 : ATG 303 A

From [s]	To [s]	Average Size [bp]	Molarity [pmol/l]	Conc. [pg/μl]	Co lor	Corr. Area % of Total	Size distribution in CV [%]
60.03	94.54	393	9,092.2	2,119.32	■	2,483.5 87	31.4

Assay Class: High Sensitivity DNA Assay
 Data Path: C:\... bioanalyzer\2100 expert\Data\2014-07-16\2014-07-16_003.xad

Created: 7/16/2014 1:13:54 PM
 Modified: 7/16/2014 1:54:26 PM

Electropherogram Summary Continued ...



Overall Results for sample 6 : ATG 303 B

Number of peaks found: 28 Corr. Area 1: 1,987.6
 Noise: 0.7

Peak table for sample 6 : ATG 303 B

Peak	Size [bp]	Conc. [pg/μl]	Molarity [pmol/l]	Observations
1	35	125.00	5,411.3	Lower Marker
2	254	64.61	385.3	
3	296	201.01	1,028.1	
4	316	280.04	1,343.3	
5	332	69.64	317.7	
6	344	114.96	506.5	
7	378	238.69	956.7	
8	416	87.37	318.5	
9	442	159.01	545.5	
10	472	59.55	191.0	
11	507	104.03	311.0	
12	534	37.52	106.4	
13	565	77.83	208.6	
14	622	57.41	139.9	
15	683	39.22	87.0	
16	837	8.08	14.6	
17	903	8.80	14.8	
18	973	4.65	7.2	
19	1,645	26.09	24.0	
20	1,751	9.42	8.1	
21	1,886	12.23	9.8	
22	2,236	30.49	20.7	
23	2,431	19.25	12.0	
24	2,905	20.90	10.9	
25	3,931	59.17	22.8	
26	6,742	10.85	2.4	

Assay Class: High Sensitivity DNA Assay
Data Path: C:\... bioanalyzer\2100 expert\Data\2014-07-16\2014-07-16_003.xad

Created: 7/16/2014 1:13:54 PM
Modified: 7/16/2014 1:54:26 PM

Electropherogram Summary Continued ...**... Peak table for sample 6 : ATG 303 B**

Peak	Size [bp]	Conc. [pg/μl]	Molarity [pmol/l]	Observations
27	7,819	2.53	0.5	
28	10,380	75.00	10.9	Upper Marker
29	12,753	0.00	0.0	
30	14,146	0.00	0.0	

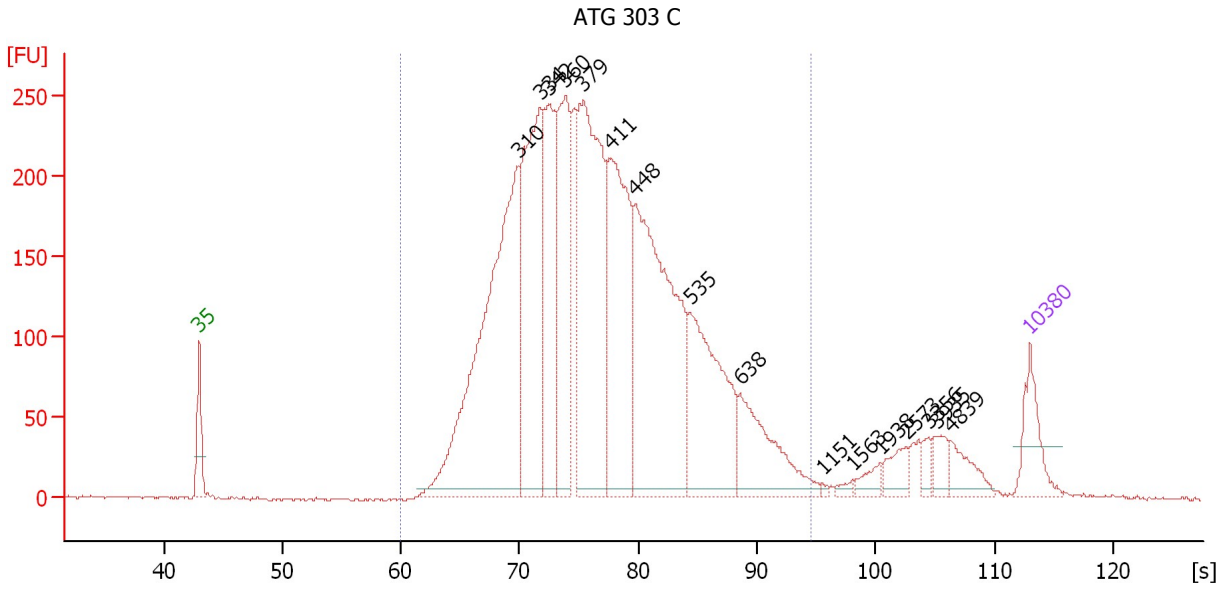
Region table for sample 6 : ATG 303 B

From [s]	To [s]	Average Size [bp]	Molarity [pmol/l]	Conc. [pg/μl]	Co lor	Corr. Area % of Total	Size distribution in CV [%]
62.04	94.54	424	7,731.3	1,938.17	1,987.6	83	30.7

Assay Class: High Sensitivity DNA Assay
 Data Path: C:\... bioanalyzer\2100 expert\Data\2014-07-16\2014-07-16_003.xad

Created: 7/16/2014 1:13:54 PM
 Modified: 7/16/2014 1:54:26 PM

Electropherogram Summary Continued ...



Overall Results for sample 7 : ATG 303 C

Number of peaks found: 16 Corr. Area 1: 5,671.0
 Noise: 0.8

Peak table for sample 7 : ATG 303 C

Peak	Size [bp]	Conc. [pg/µl]	Molarity [pmol/l]	Observations
1	35	125.00	5,411.3	Lower Marker
2	310	1,029.78	5,038.2	
3	334	608.98	2,765.8	
4	342	362.64	1,605.9	
5	360	365.54	1,539.3	
6	379	696.08	2,781.6	
7	411	508.40	1,875.3	
8	448	769.73	2,604.9	
9	535	379.89	1,075.0	
10	638	206.20	490.0	
11	1,151	3.85	5.1	
12	1,563	9.50	9.2	
13	1,938	23.12	18.1	
14	2,573	36.87	21.7	
15	3,356	19.53	8.8	
16	3,935	33.98	13.1	
17	4,839	47.28	14.8	
18	10,380	75.00	10.9	Upper Marker

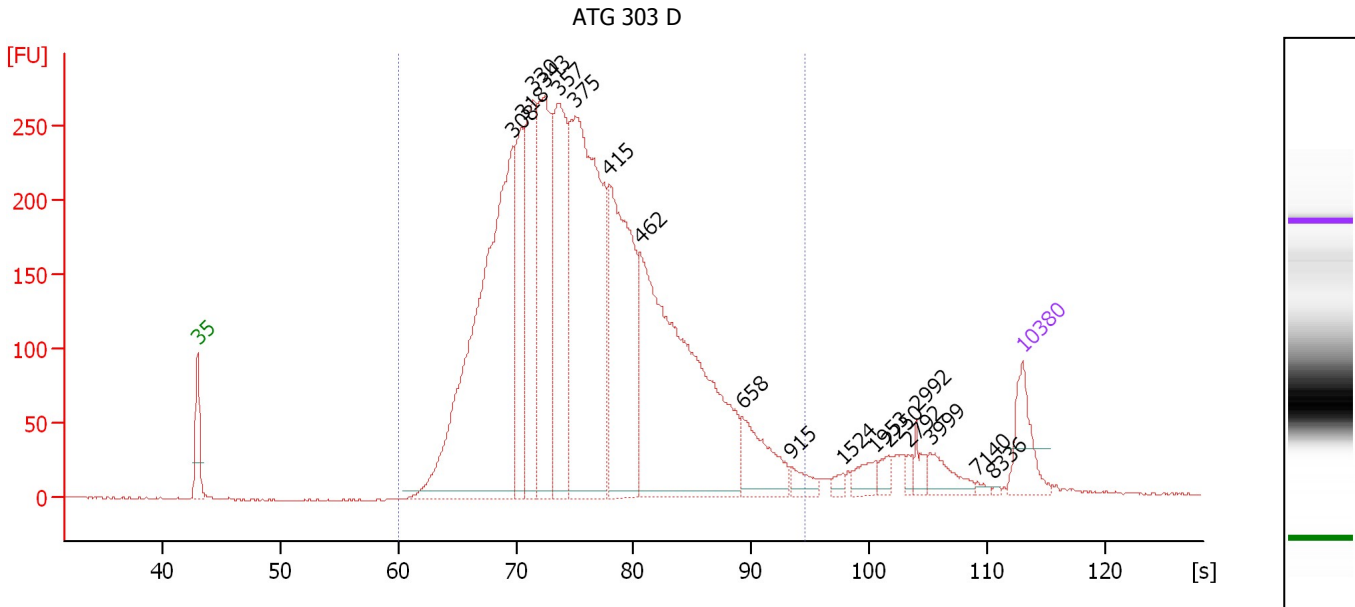
Region table for sample 7 : ATG 303 C

From [s]	To [s]	Average Size [bp]	Molarity [pmol/l]	Conc. [pg/µl]	Co lor	Corr. Area	% of Total	Size distribution in CV [%]
60.03	94.54	411	20,591.6	5,086.48	■	5,671.0	94	28.4

Assay Class: High Sensitivity DNA Assay
 Data Path: C:\... bioanalyzer\2100 expert\Data\2014-07-16\2014-07-16_003.xad

Created: 7/16/2014 1:13:54 PM
 Modified: 7/16/2014 1:54:26 PM

Electropherogram Summary Continued ...



Overall Results for sample 8 : ATG 303 D

Number of peaks found: 18 Corr. Area 1: 5,921.6
 Noise: 0.4

Peak table for sample 8 : ATG 303 D

Peak	Size [bp]	Conc. [pg/μl]	Molarity [pmol/l]	Observations
1	35	125.00	5,411.3	Lower Marker
2	308	1,225.43	6,037.7	
3	318	261.77	1,247.9	
4	330	381.95	1,754.3	
5	343	456.10	2,017.6	
6	357	446.78	1,894.0	
7	375	927.19	3,744.2	
8	415	549.14	2,004.1	
9	462	952.90	3,124.5	
10	658	136.50	314.2	
11	915	28.31	46.9	
12	1,524	11.40	11.3	
13	1,953	30.16	23.4	
14	2,250	18.20	12.3	
15	2,792	10.86	5.9	
16	2,992	24.19	12.2	
17	3,999	43.49	16.5	
18	7,140	5.59	1.2	
19	8,336	2.27	0.4	
20	10,380	75.00	10.9	Upper Marker

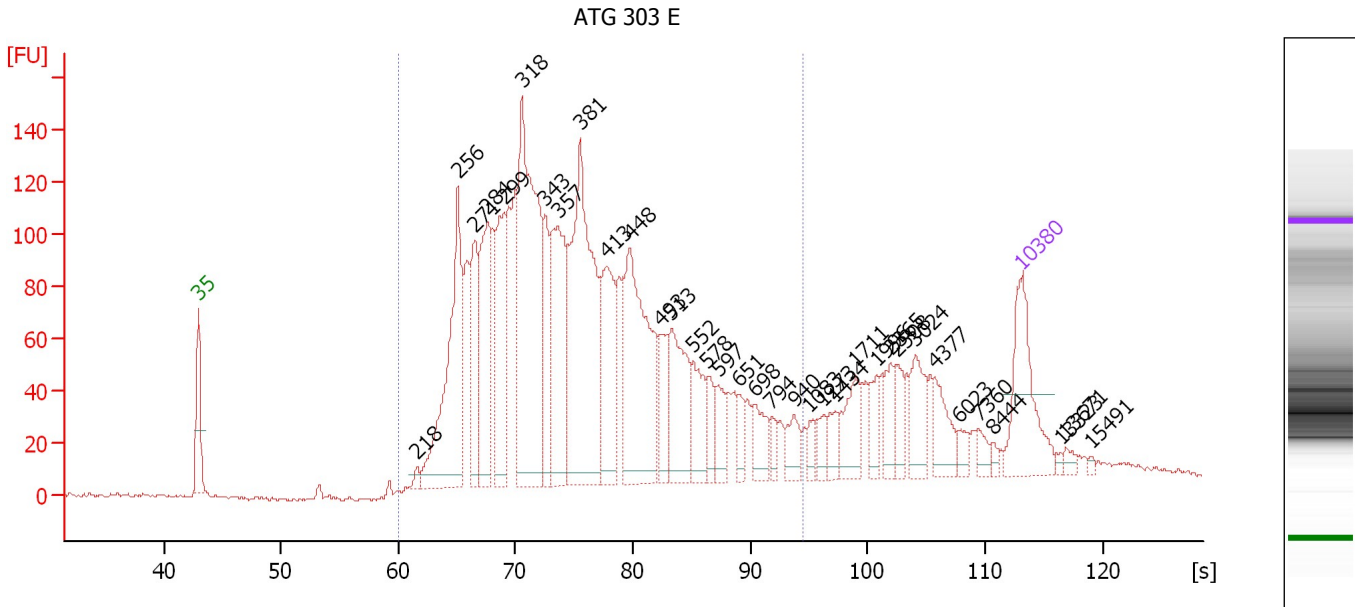
Region table for sample 8 : ATG 303 D

From [s]	To [s]	Average Size [bp]	Molarity [pmol/l]	Conc. [pg/μl]	Co lor	Corr. Area Total	% of Total	Size distribution in CV [%]
60.03	94.54	403	21,835.1	5,277.27	■	5,921.6	95	28.9

Assay Class: High Sensitivity DNA Assay
 Data Path: C:\... bioanalyzer\2100 expert\Data\2014-07-16\2014-07-16_003.xad

Created: 7/16/2014 1:13:54 PM
 Modified: 7/16/2014 1:54:26 PM

Electropherogram Summary Continued ...



Overall Results for sample 9 : ATG 303 E

Number of peaks found: 35 Corr. Area 1: 3,008.1
 Noise: 0.9

Peak table for sample 9 : ATG 303 E

Peak	Size [bp]	Conc. [pg/μl]	Molarity [pmol/l]	Observations
1	35	125.00	5,411.3	Lower Marker
2	218	7.26	50.5	
3	256	233.71	1,384.1	
4	271	94.20	525.8	
5	284	139.99	748.0	
6	299	117.88	597.0	
7	318	332.00	1,581.6	
8	343	71.37	315.4	
9	357	168.07	714.1	
10	381	293.57	1,168.0	
11	413	115.04	422.3	
12	448	213.30	721.9	
13	493	43.21	132.8	
14	513	95.73	282.7	
15	552	48.95	134.4	
16	578	24.72	64.8	
17	597	27.47	69.7	
18	651	18.65	43.4	
19	698	31.82	69.1	
20	794	12.16	23.2	
21	940	22.80	36.7	
22	1,083	11.32	15.8	
23	1,273	13.99	16.6	
24	1,434	16.59	17.5	
25	1,711	37.38	33.1	
26	1,996	19.40	14.7	

Assay Class: High Sensitivity DNA Assay
 Data Path: C:\... bioanalyzer\2100 expert\Data\2014-07-16\2014-07-16_003.xad


Created: 7/16/2014 1:13:54 PM
 Modified: 7/16/2014 1:54:26 PM

Electropherogram Summary Continued ...

... Peak table for sample 9 : ATG 303 E

Peak	Size [bp]	Conc. [pg/µl]	Molarity [pmol/l]	Observations
27	2,365	21.24	13.6	
28	2,508	21.14	12.8	
29	3,024	38.40	19.2	
30	4,377	31.16	10.8	
31	6,023	10.35	2.6	
32	7,360	10.24	2.1	
33	8,444	4.67	0.8	
34	10,380	75.00	10.9	Upper Marker
35	13,323	0.00	0.0	
36	13,671	0.00	0.0	
37	15,491	0.00	0.0	

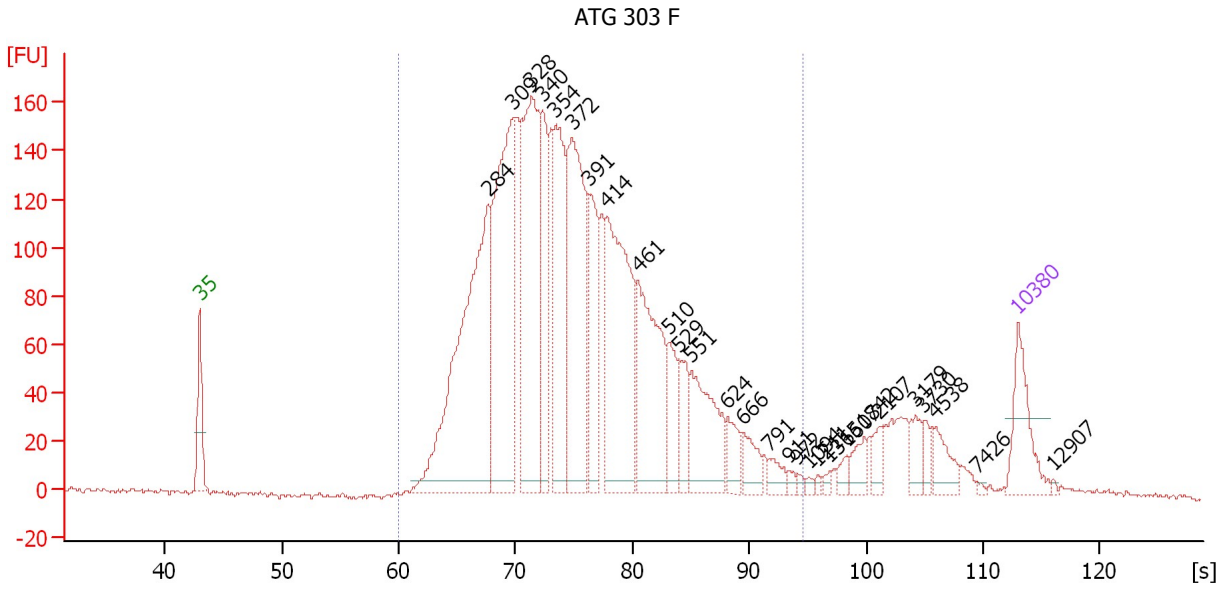
Region table for sample 9 : ATG 303 E

From [s]	To [s]	Average Size [bp]	Molarity [pmol/l]	Conc. [pg/µl]	Co lor	Corr. Area % of Total	Size distribution in CV [%]
60.03	94.54	405	10,619.7	2,480.98		3,008.1 84	35.0

Assay Class: High Sensitivity DNA Assay
 Data Path: C:\... bioanalyzer\2100 expert\Data\2014-07-16\2014-07-16_003.xad

Created: 7/16/2014 1:13:54 PM
 Modified: 7/16/2014 1:54:26 PM

Electropherogram Summary Continued ...



Overall Results for sample 10 : ATG 303 F

Number of peaks found: 28 Corr. Area 1: 3,537.6
 Noise: 1.1

Peak table for sample 10 : ATG 303 F

Peak	Size [bp]	Conc. [pg/μl]	Molarity [pmol/l]	Observations
1	35	125.00	5,411.3	Lower Marker
2	284	665.87	3,551.1	
3	309	498.45	2,444.0	
4	328	470.18	2,171.4	
5	340	175.67	783.6	
6	354	260.27	1,113.7	
7	372	378.81	1,542.8	
8	391	153.14	593.3	
9	414	374.33	1,368.8	
10	461	266.89	877.5	
11	510	71.81	213.5	
12	529	63.10	180.6	
13	551	154.93	426.3	
14	624	42.28	102.6	
15	666	41.14	93.7	
16	791	22.55	43.2	
17	911	7.12	11.8	
18	972	5.18	8.1	
19	1,094	4.58	6.3	
20	1,211	4.31	5.4	
21	1,365	6.06	6.7	
22	1,607	12.38	11.7	
23	1,842	25.00	20.6	
24	2,107	20.65	14.9	
25	3,179	28.01	13.4	
26	3,730	14.89	6.0	

Assay Class: High Sensitivity DNA Assay
Data Path: C:\... bioanalyzer\2100 expert\Data\2014-07-16\2014-07-16_003.xad

Created: 7/16/2014 1:13:54 PM
Modified: 7/16/2014 1:54:26 PM

Electropherogram Summary Continued ...**... Peak table for sample 10 : ATG 303 F**

Peak	Size [bp]	Conc. [pg/μl]	Molarity [pmol/l]	Observations
27	4,538	34.55	11.5	
28	7,426	2.74	0.6	
29	10,380	75.00	10.9	Upper Marker
30	12,907	0.00	0.0	

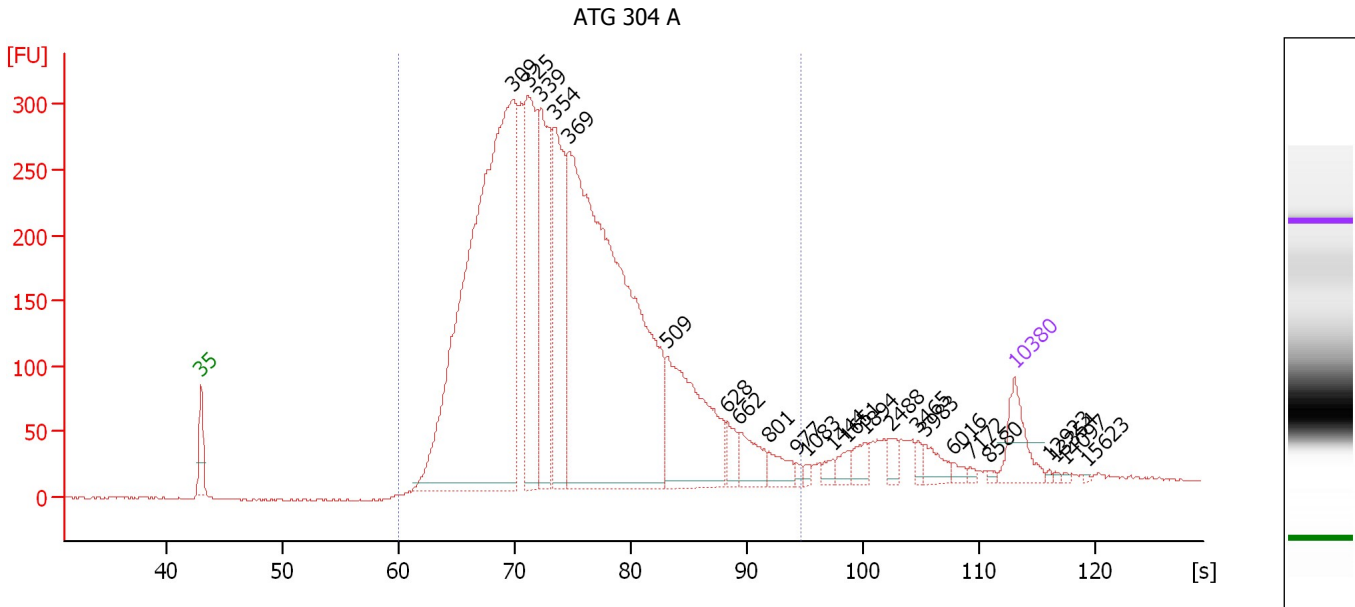
Region table for sample 10 : ATG 303 F

From [s]	To [s]	Average Size [bp]	Molarity [pmol/l]	Conc. [pg/μl]	Co lor	Corr. Area % of Total	Size distribution in CV [%]
60.03	94.54	391	17,331.3	4,054.05	3,537.6	91	29.4

Assay Class: High Sensitivity DNA Assay
 Data Path: C:\... bioanalyzer\2100 expert\Data\2014-07-16\2014-07-16_003.xad

Created: 7/16/2014 1:13:54 PM
 Modified: 7/16/2014 1:54:26 PM

Electropherogram Summary Continued ...



Overall Results for sample 11 : ATG 304 A

Number of peaks found: 24 Corr. Area 1: 6,511.4
 Noise: 1.1

Peak table for sample 11 : ATG 304 A

Peak	Size [bp]	Conc. [pg/μl]	Molarity [pmol/l]	Observations
1	35	125.00	5,411.3	Lower Marker
2	309	1,977.61	9,681.5	
3	325	492.61	2,295.1	
4	339	403.75	1,803.6	
5	354	415.19	1,778.5	
6	369	1,804.02	7,398.9	
7	509	396.45	1,179.1	
8	628	43.53	105.0	
9	662	74.34	170.1	
10	801	41.77	79.0	
11	977	8.17	12.7	
12	1,083	7.71	10.8	
13	1,444	15.02	15.8	
14	1,651	21.53	19.8	
15	1,894	30.37	24.3	
16	2,488	21.19	12.9	
17	3,465	12.61	5.5	
18	3,983	34.56	13.1	
19	6,016	10.57	2.7	
20	7,172	6.01	1.3	
21	8,580	4.37	0.8	
22	10,380	75.00	10.9	Upper Marker
23	12,923	0.00	0.0	
24	13,354	0.00	0.0	
25	14,097	0.00	0.0	
26	15,623	0.00	0.0	

Assay Class: High Sensitivity DNA Assay
Data Path: C:\... bioanalyzer\2100 expert\Data\2014-07-16\2014-07-16_003.xad

Created: 7/16/2014 1:13:54 PM
Modified: 7/16/2014 1:54:26 PM

Electropherogram Summary Continued ...

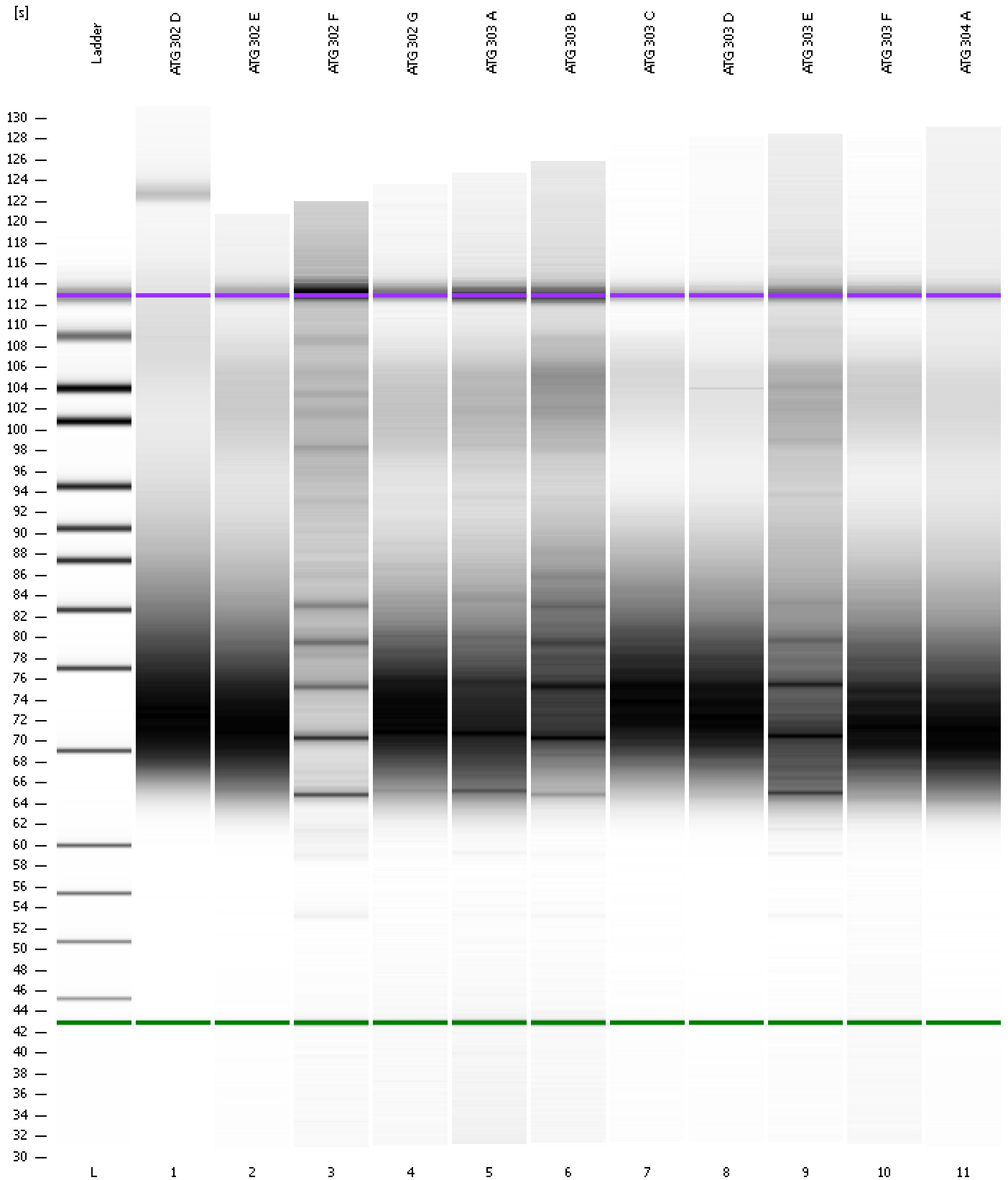
... Region table for sample 11 : ATG 304 A

From [s]	To [s]	Average Size [bp]	Molarity [pmol/l]	Conc. [pg/ μ l]	Co lor	Corr. Area	% of Total	Size distribution in CV [%]
60.03	94.54	382	25,777.7	5,899.22		6,511.4	94	30.1

Assay Class: High Sensitivity DNA Assay
Data Path: C:\... bioanalyzer\2100 expert\Data\2014-07-16\2014-07-16_003.xad

Created: 7/16/2014 1:13:54 PM
Modified: 7/16/2014 1:54:26 PM

Gel Image



Assay Class: High Sensitivity DNA Assay
 Data Path: C:\... bioanalyzer\2100 expert\Data\2014-07-16\2014-07-16_003.xad

Created: 7/16/2014 1:13:54 PM
 Modified: 7/16/2014 1:54:26 PM

Run Logbook

Description	Number	Source	Category	Sub Category	Time	Time Zone	User	Host
Run ended on port 1 (Number of wells acquired: 12)		Instrument	Run		7/16/2014 1:54:23 PM	(GMT --07:00) Pacific Standard Time	UC Davis	D8XSMGH1
Run started on port 1 (File: C:\Program Files\Agilent\2100 bioanalyzer\2100 expert\Data\2014-07-16\2014-07-16_003.xad)		Instrument	Run		7/16/2014 1:14:00 PM	(GMT --07:00) Pacific Standard Time	UC Davis	D8XSMGH1
Product Number : G2938B		Instrument	Run		7/16/2014 1:14:00 PM	(GMT --07:00) Pacific Standard Time	UC Davis	D8XSMGH1
Name :		Instrument	Run		7/16/2014 1:14:00 PM	(GMT --07:00) Pacific Standard Time	UC Davis	D8XSMGH1
Vendor : Agilent Technologies		Instrument	Run		7/16/2014 1:14:00 PM	(GMT --07:00) Pacific Standard Time	UC Davis	D8XSMGH1
Serial# : DE13701086		Instrument	Run		7/16/2014 1:14:00 PM	(GMT --07:00) Pacific Standard Time	UC Davis	D8XSMGH1
Firmware : C.01.069		Instrument	Run		7/16/2014 1:14:00 PM	(GMT --07:00) Pacific Standard Time	UC Davis	D8XSMGH1
Cartridge : Electrode		Instrument	Run		7/16/2014 1:14:00 PM	(GMT --07:00) Pacific Standard Time	UC Davis	D8XSMGH1