

Assay Class: High Sensitivity DNA Assay
Data Path: C:\...ioanalyzer\2100 expert\data\2014-07-17\2014-07-17_003_2.xad

Created: 7/17/2014 1:26:15 PM
Modified: 7/17/2014 2:03:26 PM

Electrophoresis File Run Summary

Instrument Information:

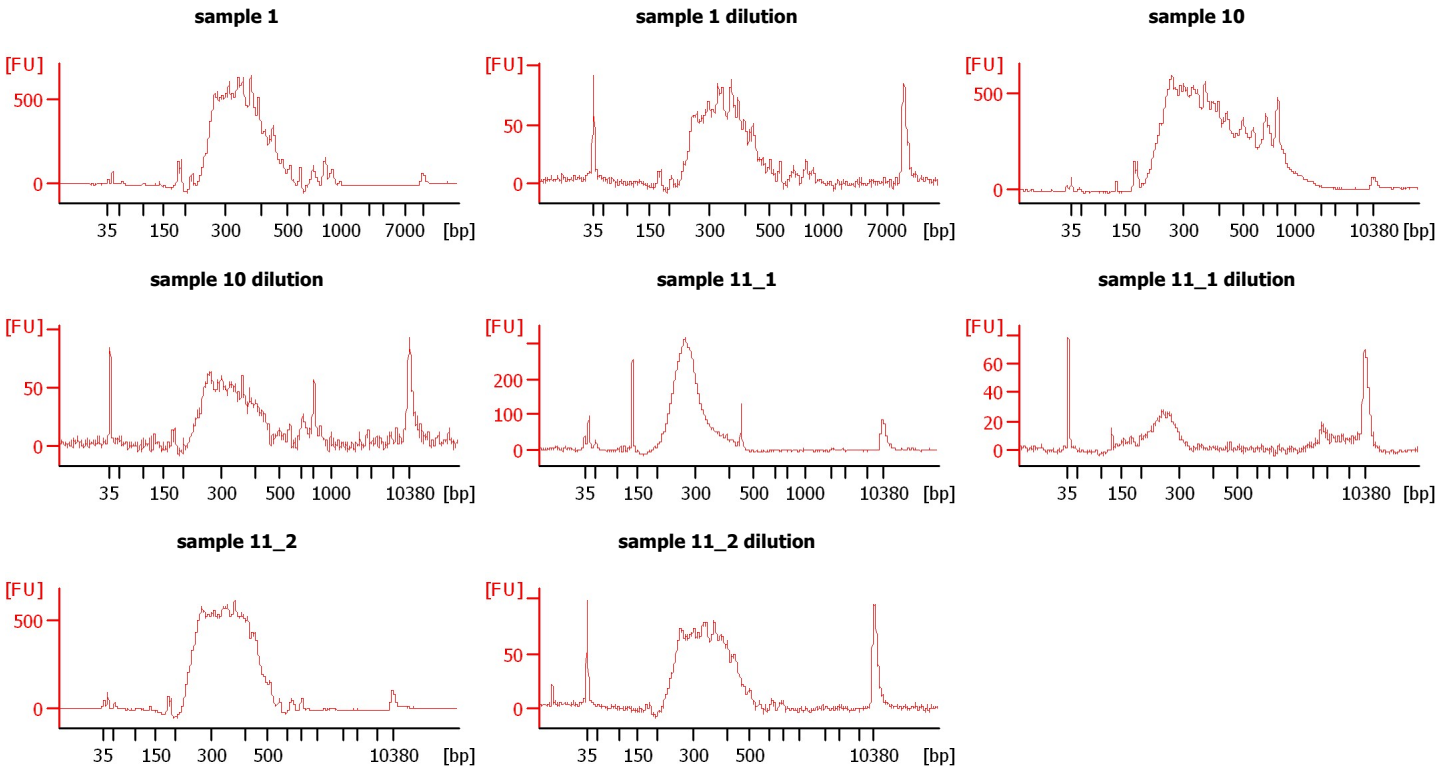
Instrument Name: DE13701086 Firmware: C.01.069
Serial#: DE13701086 Type: G2938B

Assay Information:

Assay Origin Path: C:\Program Files\Agilent\2100 bioanalyzer\2100 expert\assays\dsDNA\High Sensitivity DNA.xsy
Assay Class: High Sensitivity DNA Assay
Version: 1.03
Assay Comments: Copyright © 2003-2010 Agilent Technologies

Chip Information:

Chip Lot #:
Reagent Kit Lot #:
Chip Comments:



Assay Class: High Sensitivity DNA Assay
 Data Path: C:\...ioanalyzer\2100 expert\data\2014-07-17\2014-07-17_003_2.xad

Created: 7/17/2014 1:26:15 PM
 Modified: 7/17/2014 2:03:26 PM

Electrophoresis File Run Summary (Chip Summary)

Sample Name	Sample Comment	Rest. Digest	Status	Observation	Result Label	Result Color
sample 1		<input type="checkbox"/>	✓			
sample 1 dilution		<input type="checkbox"/>	✓			
sample 10		<input type="checkbox"/>	✓			
sample 10 dilution		<input type="checkbox"/>	✓			
sample 11_1		<input type="checkbox"/>	✓			
sample 11_1 dilution		<input type="checkbox"/>	✓			
sample 11_2		<input type="checkbox"/>	✓			
sample 11_2 dilution		<input type="checkbox"/>	✓			
Ladder		<input type="checkbox"/>	✓			

Chip Lot #

Reagent Kit Lot #

Chip Comments :

Assay Class: High Sensitivity DNA Assay
Data Path: C:\...ioanalyzer\2100 expert\data\2014-07-17\2014-07-17_003_2.xad

Created: 7/17/2014 1:26:15 PM
Modified: 7/17/2014 2:03:26 PM

Electrophoresis Assay Details

General Analysis Settings

Number of Available Sample and Ladder Wells (Max.) : 12
Minimum Visible Range [s] : 32
Maximum Visible Range [s] : 138
Start Analysis Time Range [s] : 33
End Analysis Time Range [s] : 137.5
Ladder Concentration [pg/μl] : 1950
Uses Standard Area for Ladder Fragments
Lower Marker Concentration [pg/μl] : 125
Upper Marker Concentration [pg/μl] : 75
Used Upper Marker for Quantitation
Standard Curve Fit is Point to Point
Show Data Aligned to Lower and Upper Marker

Integrator Settings

Integration Start Time [s] : 33.05
Integration End Time [s] : 137
Slope Threshold : 0.8
Height Threshold [FU] : 5
Area Threshold : 0.1
Width Threshold [s] : 0.6
Baseline Plateau [s] : 0.5

Filter Settings

Filter Width [s] : 0.5
Polynomial Order : 4

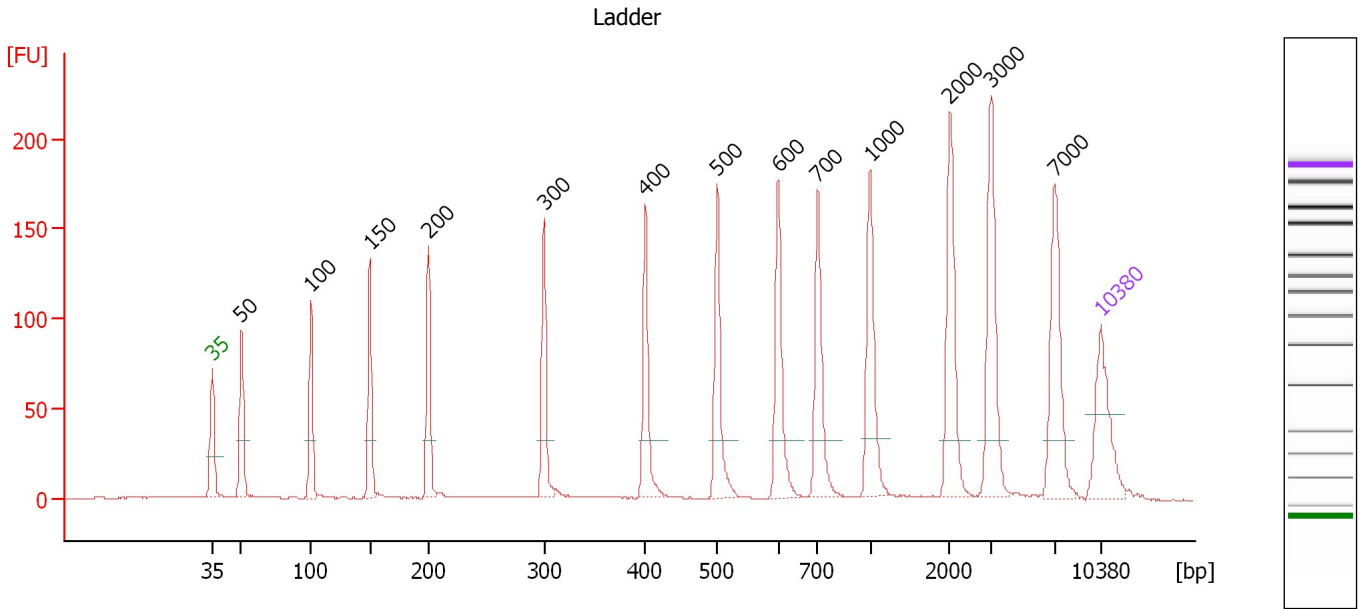
Ladder

Ladder Peak	Size	Area
1	35	160
2	50	210
3	100	208
4	150	221
5	200	242
6	300	270
7	400	305
8	500	306
9	600	336
10	700	321
11	1000	366
12	2000	413
13	3000	411
14	7000	400
15	10380	214

Assay Class: High Sensitivity DNA Assay
 Data Path: C:\...ioanalyzer\2100 expert\data\2014-07-17\2014-07-17_003_2.xad

Created: 7/17/2014 1:26:15 PM
 Modified: 7/17/2014 2:03:26 PM

Electropherogram Summary



Overall Results for Ladder

Noise: 0.2

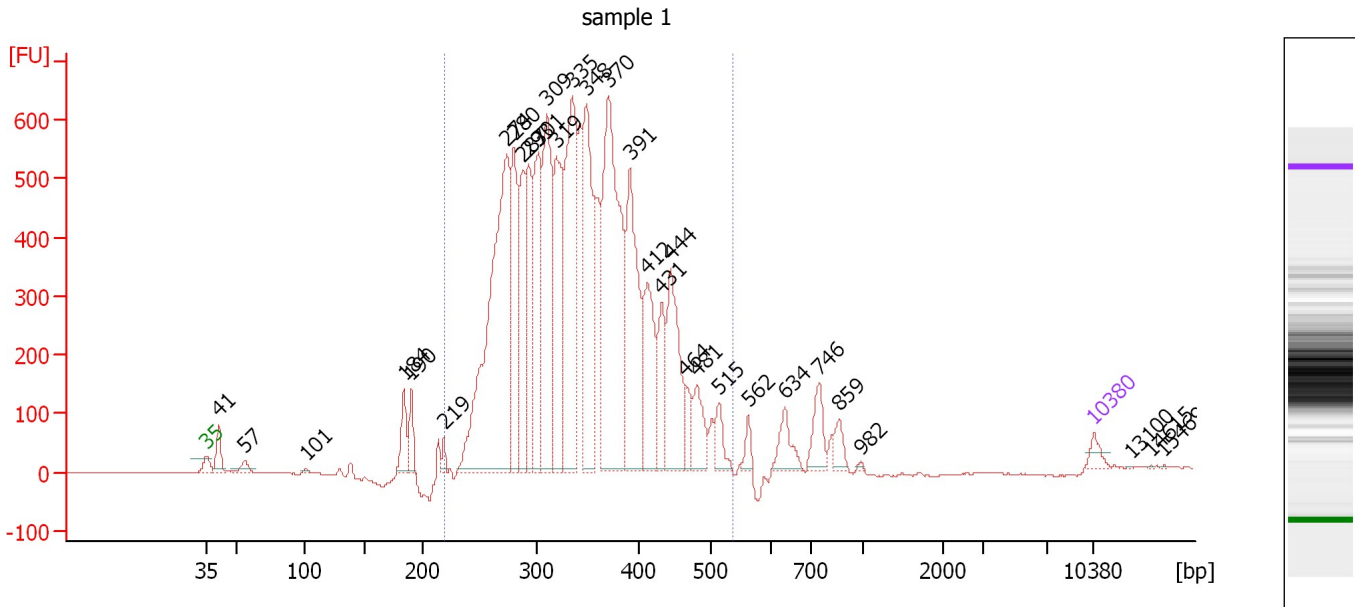
Peak table for Ladder

Peak	Size [bp]	Conc. [pg/μl]	Molarity [pmol/l]	Observations
1	35	125.00	5,411.3	Lower Marker
2	50	150.00	4,545.5	Ladder Peak
3	100	150.00	2,272.7	Ladder Peak
4	150	150.00	1,515.2	Ladder Peak
5	200	150.00	1,136.4	Ladder Peak
6	300	150.00	757.6	Ladder Peak
7	400	150.00	568.2	Ladder Peak
8	500	150.00	454.5	Ladder Peak
9	600	150.00	378.8	Ladder Peak
10	700	150.00	324.7	Ladder Peak
11	1,000	150.00	227.3	Ladder Peak
12	2,000	150.00	113.6	Ladder Peak
13	3,000	150.00	75.8	Ladder Peak
14	7,000	150.00	32.5	Ladder Peak
15	10,380	75.00	10.9	Upper Marker

Assay Class: High Sensitivity DNA Assay
 Data Path: C:\...ioanalyzer\2100 expert\data\2014-07-17\2014-07-17_003_2.xad

Created: 7/17/2014 1:26:15 PM
 Modified: 7/17/2014 2:03:26 PM

Electropherogram Summary Continued ...



Overall Results for sample 1 : sample 1

Number of peaks found: 31 Corr. Area 1: 11,311.5
 Noise: 0.3

Peak table for sample 1 : sample 1

Peak	Size [bp]	Conc. [pg/μl]	Molarity [pmol/l]	Observations
1	35	125.00	5,411.3	Lower Marker
2	41	253.45	9,304.4	
3	57	98.57	2,641.6	
4	101	18.37	274.6	
5	184	317.50	2,613.2	
6	190	245.02	1,949.2	
7	219	74.59	517.2	
8	274	3,838.07	21,253.7	
9	280	1,180.30	6,395.3	
10	287	973.47	5,138.5	
11	293	976.46	5,056.5	
12	301	1,287.83	6,492.8	
13	309	1,724.62	8,444.9	
14	319	1,363.78	6,480.6	
15	335	2,001.08	9,062.6	
16	348	1,567.82	6,822.8	
17	370	2,907.22	11,916.9	
18	391	1,493.12	5,784.4	
19	412	871.85	3,206.7	
20	431	490.61	1,723.3	
21	444	984.17	3,358.2	
22	464	194.89	636.1	
23	481	375.86	1,183.1	
24	515	207.88	611.8	
25	562	100.96	272.3	
26	634	240.75	575.6	

Assay Class: High Sensitivity DNA Assay
 Data Path: C:\...ioanalyzer\2100 expert\data\2014-07-17\2014-07-17_003_2.xad

Created: 7/17/2014 1:26:15 PM
 Modified: 7/17/2014 2:03:26 PM

Electropherogram Summary Continued ...

... Peak table for sample 1 : sample 1

Peak	Size [bp]	Conc. [pg/μl]	Molarity [pmol/l]	Observations
27	746	279.32	567.4	
28	859	134.73	237.6	
29	982	11.27	17.4	
30	10,380	75.00	10.9	Upper Marker
31	13,100	0.00	0.0	
32	14,615	0.00	0.0	
33	15,469	0.00	0.0	

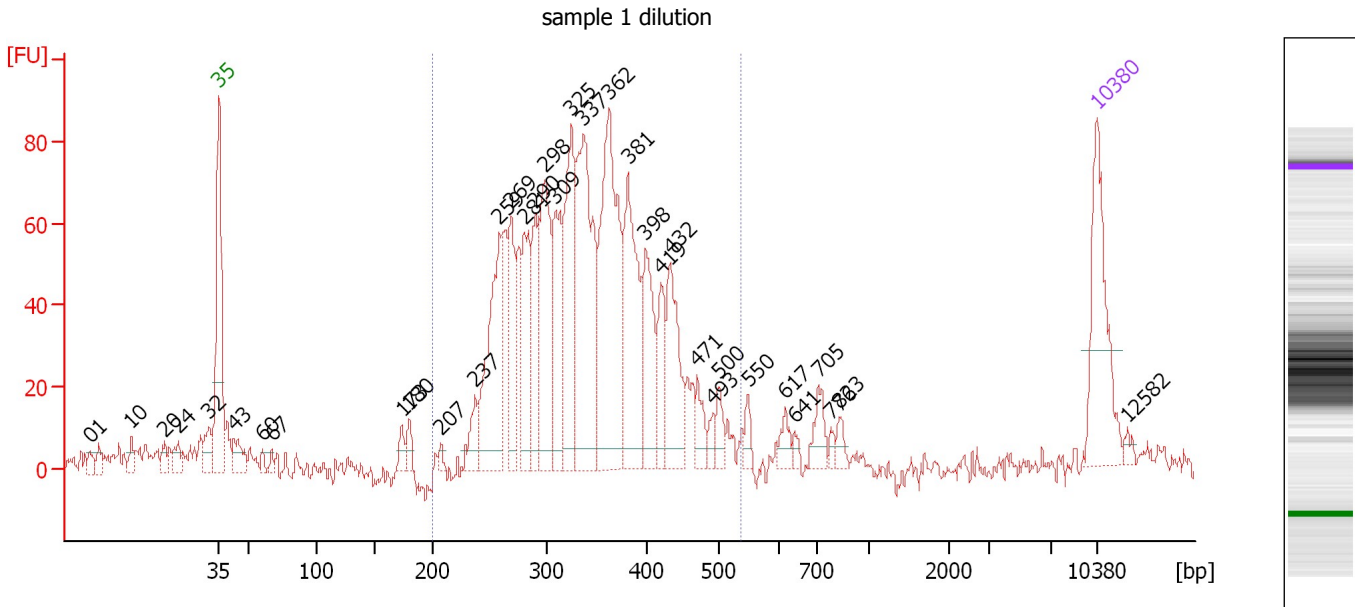
Region table for sample 1 : sample 1

From [bp]	To [bp]	Average Size [bp]	Molarity [pmol/l]	Conc. [pg/μl]	Co Corr. lor Area	% of Total	Size distribution in CV [%]
219	538	344	109,064.7	23,760.10	11,311.5	93	17.8

Assay Class: High Sensitivity DNA Assay
 Data Path: C:\...ioanalyzer\2100 expert\data\2014-07-17\2014-07-17_003_2.xad

Created: 7/17/2014 1:26:15 PM
 Modified: 7/17/2014 2:03:26 PM

Electropherogram Summary Continued ...



Overall Results for sample 2 : sample 1 dilution

Number of peaks found: 36 Corr. Area 1: 1,379.1
 Noise: 3.3

Peak table for sample 2 : sample 1 dilution

Peak	Size [bp]	Conc. [pg/μl]	Molarity [pmol/l]	Observations
1	0	0.00	0.0	
2	1	0.00	0.0	
3	10	0.00	0.0	
4	20	0.00	0.0	
5	24	0.00	0.0	
6	32	0.00	0.0	
7	35	125.00	5,411.3	Lower Marker
8	43	28.73	1,018.6	
9	60	6.48	162.5	
10	67	6.10	137.1	
11	173	13.51	118.1	
12	180	13.94	117.5	
13	207	6.13	44.9	
14	237	26.61	170.2	
15	259	139.00	814.7	
16	269	69.65	392.6	
17	281	79.31	427.7	
18	290	64.50	337.1	
19	298	121.82	618.7	
20	309	86.04	422.3	
21	325	128.68	600.6	
22	337	188.32	847.2	
23	362	213.46	892.8	
24	381	128.04	509.5	
25	398	73.38	279.1	
26	419	40.78	147.3	

Assay Class: High Sensitivity DNA Assay
 Data Path: C:\...ioanalyzer\2100 expert\data\2014-07-17\2014-07-17_003_2.xad

Created: 7/17/2014 1:26:15 PM
 Modified: 7/17/2014 2:03:26 PM

Electropherogram Summary Continued ...

... Peak table for sample 2 : sample 1 dilution

Peak	Size [bp]	Conc. [pg/μl]	Molarity [pmol/l]	Observations
27	432	75.92	266.1	
28	471	19.85	63.9	
29	493	9.22	28.3	
30	500	16.19	49.0	
31	550	10.52	29.0	
32	617	12.40	30.4	
33	641	5.22	12.4	
34	705	20.10	43.2	
35	776	4.70	9.2	
36	823	8.64	15.9	
37	▶ 10,380	75.00	10.9	Upper Marker
38	12,582	0.00	0.0	

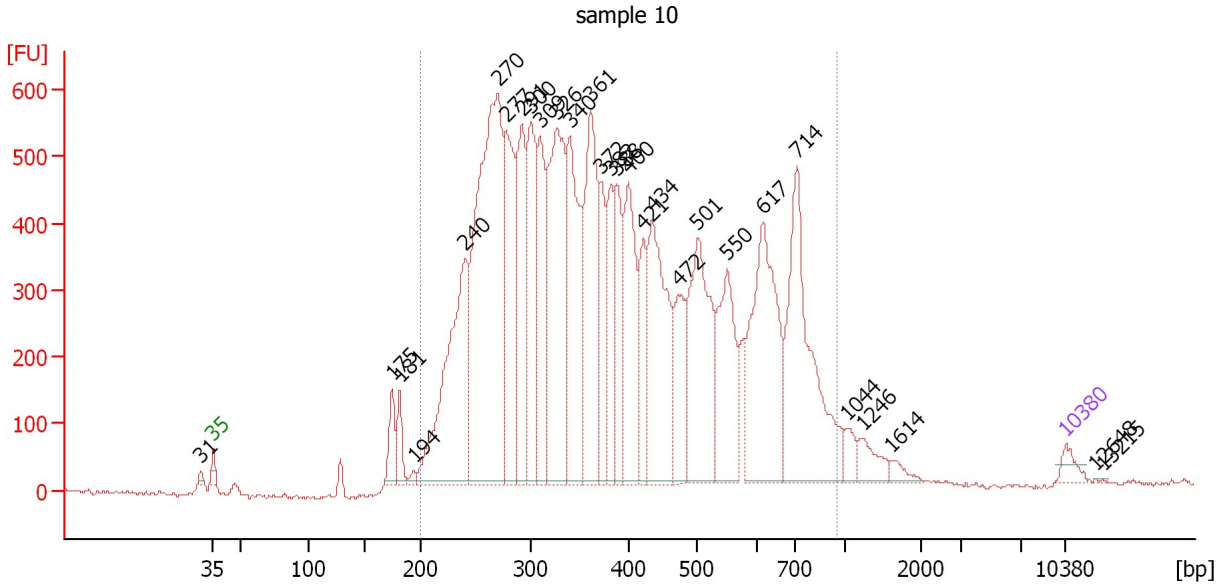
Region table for sample 2 : sample 1 dilution

From [bp]	To [bp]	Average Size [bp]	Molarity [pmol/l]	Conc. [pg/μl]	Co Corr. lor Area	% of Total	Size distribution in CV [%]
200	537	342	7,085.6	1,530.05	■ 1,379.1	90	18.2

Assay Class: High Sensitivity DNA Assay
 Data Path: C:\...ioanalyzer\2100 expert\data\2014-07-17\2014-07-17_003_2.xad

Created: 7/17/2014 1:26:15 PM
 Modified: 7/17/2014 2:03:26 PM

Electropherogram Summary Continued ...



Overall Results for sample 3 : sample 10

Number of peaks found: 29 Corr. Area 1: 16,687.1
 Noise: 4.3

Peak table for sample 3 : sample 10

Peak	Size [bp]	Conc. [pg/μl]	Molarity [pmol/l]	Observations
1	31	0.00	0.0	
2	35	125.00	5,411.3	Lower Marker
3	175	277.98	2,411.2	
4	181	233.84	1,954.1	
5	194	37.83	296.0	
6	240	2,084.08	13,139.0	
7	270	3,808.37	21,389.3	
8	277	1,374.58	7,505.3	
9	291	1,105.08	5,744.1	
10	300	1,213.71	6,136.1	
11	309	865.40	4,236.8	
12	326	1,987.86	9,227.6	
13	340	1,435.84	6,407.9	
14	361	1,452.35	6,099.2	
15	372	570.49	2,325.4	
16	382	559.58	2,222.2	
17	388	657.47	2,570.5	
18	400	979.82	3,715.7	
19	421	512.68	1,844.5	
20	434	1,369.82	4,786.8	
21	472	549.53	1,765.1	
22	501	1,357.81	4,109.9	
23	550	864.82	2,380.6	
24	617	1,458.91	3,580.5	
25	714	1,654.92	3,512.6	
26	1,044	111.32	161.5	

Assay Class: High Sensitivity DNA Assay
 Data Path: C:\...ioanalyzer\2100 expert\data\2014-07-17\2014-07-17_003_2.xad

Created: 7/17/2014 1:26:15 PM
 Modified: 7/17/2014 2:03:26 PM

Electropherogram Summary Continued ...

... Peak table for sample 3 : sample 10

Peak	Size [bp]	Conc. [pg/μl]	Molarity [pmol/l]	Observations
27	1,246	164.49	200.1	
28	1,614	62.37	58.5	
29	10,380	75.00	10.9	Upper Marker
30	12,648	0.00	0.0	
31	13,215	0.00	0.0	

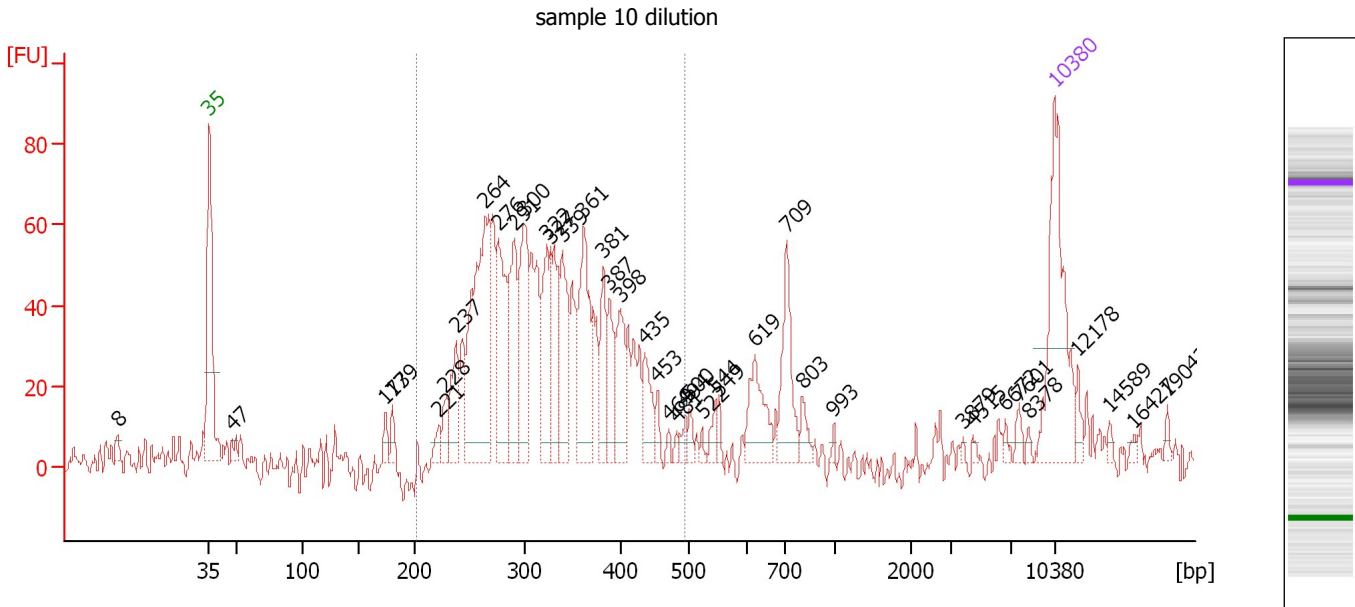
Region table for sample 3 : sample 10

From [bp]	To [bp]	Average Size [bp]	Molarity [pmol/l]	Conc. [pg/μl]	Co Corr. lor Area	% of Total	Size distribution in CV [%]
200	957	413	114,551.1	26,310.31	16,687.1	96	37.4

Assay Class: High Sensitivity DNA Assay
 Data Path: C:\...ioanalyzer\2100 expert\data\2014-07-17\2014-07-17_003_2.xad

Created: 7/17/2014 1:26:15 PM
 Modified: 7/17/2014 2:03:26 PM

Electropherogram Summary Continued ...



Overall Results for sample 4 : sample 10 dilution

Number of peaks found: 40 Corr. Area 1: 1,035.6
 Noise: 4.7

Peak table for sample 4 : sample 10 dilution

Peak	Size [bp]	Conc. [pg/μl]	Molarity [pmol/l]	Observations
1	8	0.00	0.0	
2	35	125.00	5,411.3	Lower Marker
3	47	9.03	289.1	
4	173	9.90	86.6	
5	179	10.38	87.6	
6	221	8.71	59.7	
7	228	14.25	94.8	
8	237	40.25	256.8	
9	264	168.32	965.1	
10	276	75.51	414.6	
11	291	66.39	346.2	
12	300	77.05	388.7	
13	322	56.37	264.9	
14	327	51.42	238.0	
15	339	54.55	243.9	
16	361	82.32	345.6	
17	381	33.83	134.4	
18	387	31.77	124.3	
19	398	35.77	136.0	
20	435	25.68	89.5	
21	453	7.78	26.1	
22	469	3.59	11.6	
23	481	3.88	12.2	
24	494	5.54	17.0	
25	500	7.42	22.5	
26	522	2.92	8.5	

Assay Class: High Sensitivity DNA Assay
 Data Path: C:\...ioanalyzer\2100 expert\data\2014-07-17\2014-07-17_003_2.xad

Created: 7/17/2014 1:26:15 PM
 Modified: 7/17/2014 2:03:26 PM

Electropherogram Summary Continued ...

... Peak table for sample 4 : sample 10 dilution

Peak	Size [bp]	Conc. [pg/μl]	Molarity [pmol/l]	Observations
27	544	7.15	19.9	
28	549	6.02	16.6	
29	619	36.81	90.1	
30	709	45.19	96.5	
31	803	9.63	18.2	
32	993	2.20	3.4	
33	3,879	1.35	0.5	
34	4,515	1.89	0.6	
35	6,672	3.07	0.7	
36	7,601	5.05	1.0	
37	8,378	2.27	0.4	
38	10,380	75.00	10.9	Upper Marker
39	12,178	0.00	0.0	
40	14,589	0.00	0.0	
41	16,427	0.00	0.0	
42	19,042	0.00	0.0	

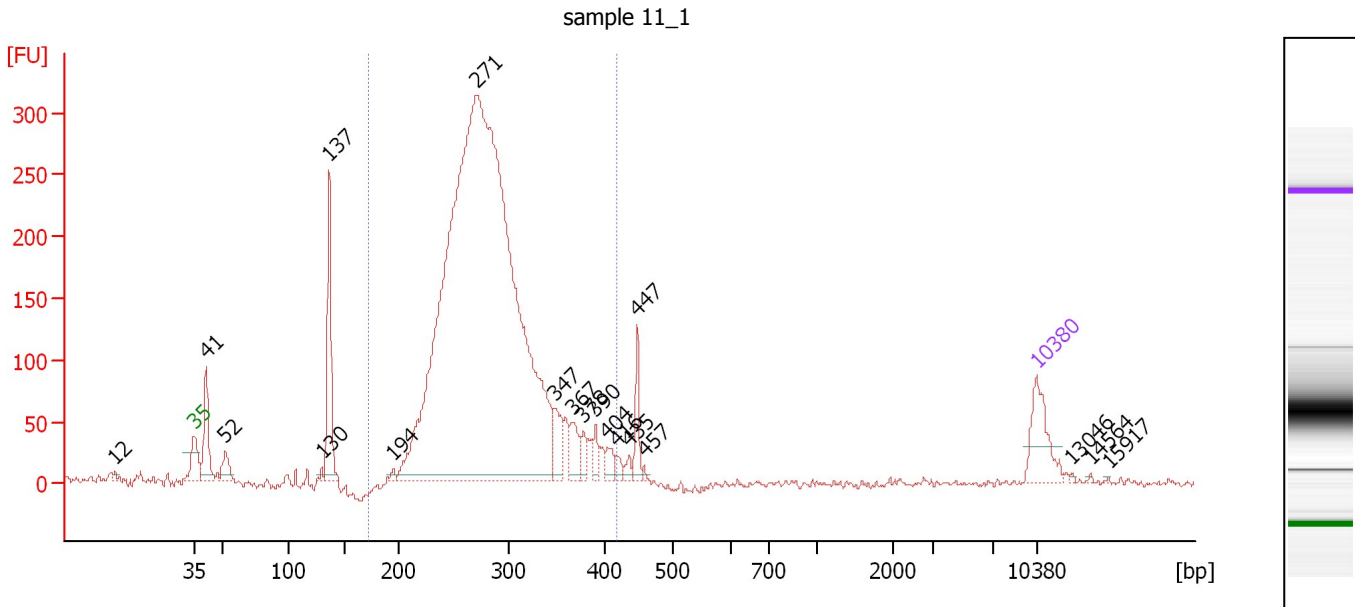
Region table for sample 4 : sample 10 dilution

From [bp]	To [bp]	Average Size [bp]	Molarity [pmol/l]	Conc. [pg/μl]	Co Corr. for Area	% of Total	Size distribution in CV [%]
201	493	325	5,076.1	1,041.12	1,035.6	80	17.9

Assay Class: High Sensitivity DNA Assay
 Data Path: C:\...ioanalyzer\2100 expert\data\2014-07-17\2014-07-17_003_2.xad

Created: 7/17/2014 1:26:15 PM
 Modified: 7/17/2014 2:03:26 PM

Electropherogram Summary Continued ...



Overall Results for sample 5 : sample 11_1

Number of peaks found: 19 Corr. Area 1: 3,568.3
 Noise: 2.8

Peak table for sample 5 : sample 11_1

Peak	Size [bp]	Conc. [pg/μl]	Molarity [pmol/l]	Observations
1	12	0.00	0.0	
2	35	125.00	5,411.3	Lower Marker
3	41	134.82	4,941.9	
4	52	45.17	1,306.2	
5	130	7.08	82.3	
6	137	236.16	2,612.2	
7	194	9.22	71.9	
8	271	3,334.55	18,637.7	
9	347	62.56	272.8	
10	367	50.19	207.3	
11	378	28.79	115.4	
12	390	27.11	105.3	
13	404	24.01	90.1	
14	416	14.81	53.9	
15	435	13.54	47.1	
16	447	50.99	172.7	
17	457	5.15	17.1	
18	10,380	75.00	10.9	Upper Marker
19	13,046	0.00	0.0	
20	14,564	0.00	0.0	
21	15,917	0.00	0.0	

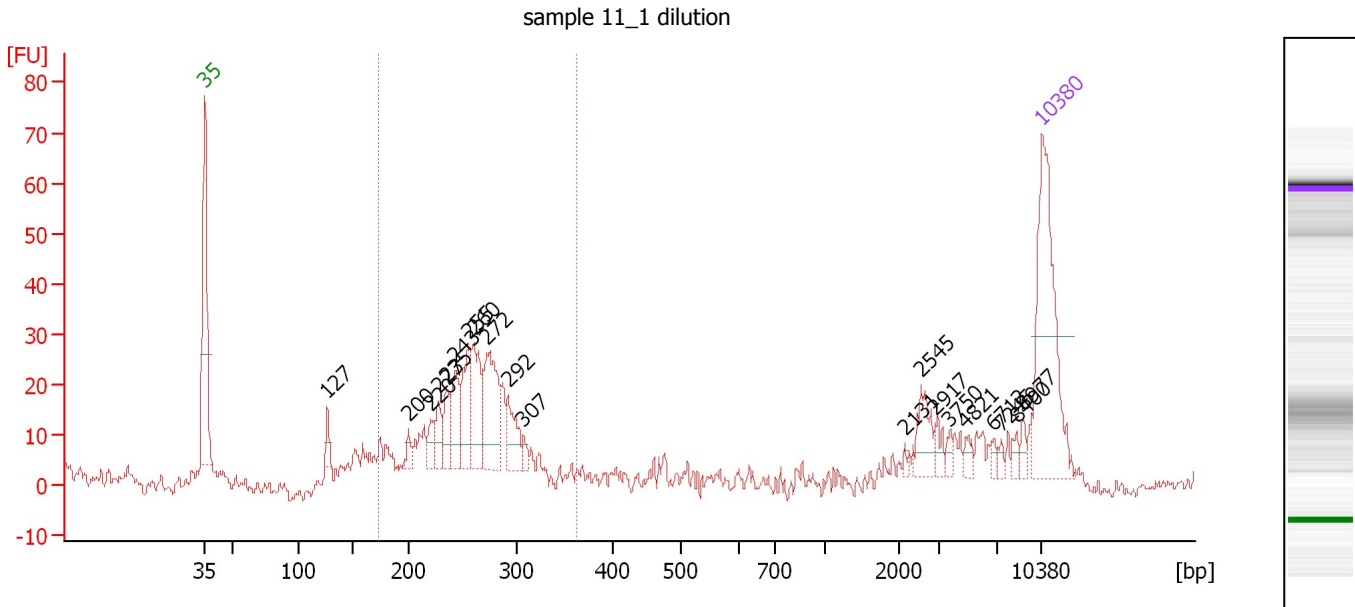
Region table for sample 5 : sample 11_1

From [bp]	To [bp]	Average Size [bp]	Molarity [pmol/l]	Conc. [pg/μl]	Co Corr. lor Area	% of Total	Size distribution in CV [%]
172	419	284	19,586.8	3,593.20	3,568.3	87	14.5

Assay Class: High Sensitivity DNA Assay
 Data Path: C:\...ioanalyzer\2100 expert\data\2014-07-17\2014-07-17_003_2.xad

Created: 7/17/2014 1:26:15 PM
 Modified: 7/17/2014 2:03:26 PM

Electropherogram Summary Continued ...



Overall Results for sample 6 : sample 11_1 dilution

Number of peaks found: 20 Corr. Area 1: 294.9
 Noise: 1.6

Peak table for sample 6 : sample 11_1 dilution

Peak	Size [bp]	Conc. [pg/μl]	Molarity [pmol/l]	Observations
1	35	125.00	5,411.3	Lower Marker
2	127	10.49	125.5	
3	200	6.56	49.7	
4	220	10.85	74.7	
5	227	15.84	105.8	
6	235	17.36	111.9	
7	243	29.32	182.8	
8	255	34.82	206.6	
9	260	40.13	233.6	
10	272	57.56	320.5	
11	292	24.08	125.1	
12	307	5.05	24.9	
13	2,131	1.77	1.3	
14	2,545	15.94	9.5	
15	2,917	5.54	2.9	
16	3,750	3.81	1.5	
17	4,821	4.37	1.4	
18	6,712	2.85	0.6	
19	7,245	2.41	0.5	
20	8,400	3.70	0.7	
21	8,977	3.99	0.7	
22	10,380	75.00	10.9	Upper Marker

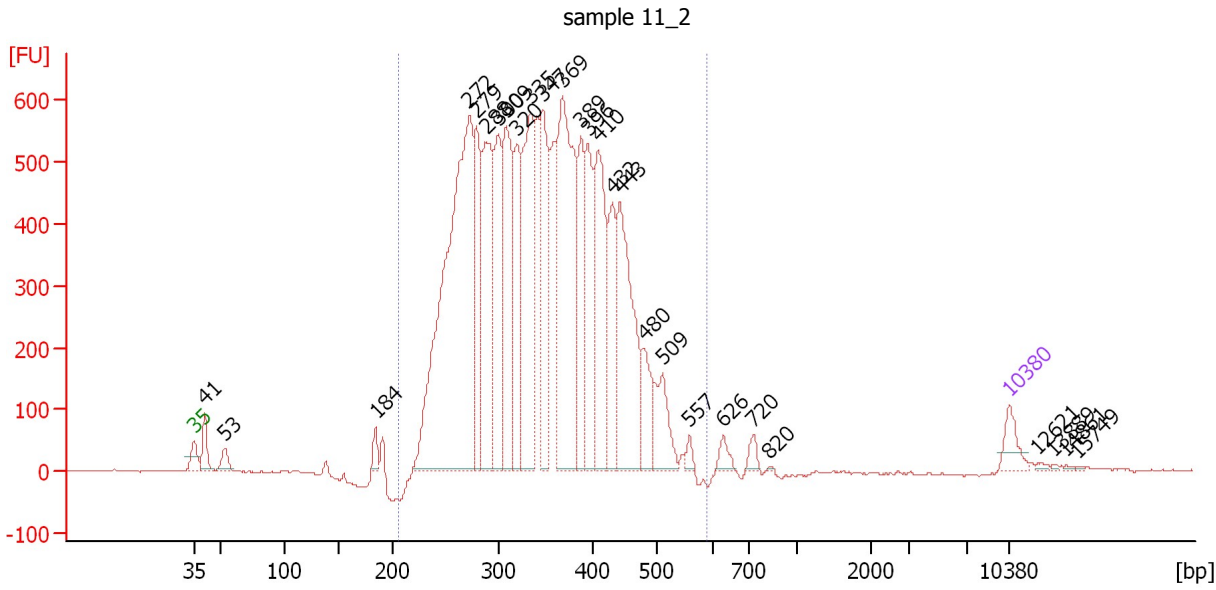
Region table for sample 6 : sample 11_1 dilution

From [bp]	To [bp]	Average Size [bp]	Molarity [pmol/l]	Conc. [pg/μl]	Co Corr. lor Area	% of Total	Size distribution in CV [%]
173	362	257	2,135.3	354.88	294.9	63	13.6

Assay Class: High Sensitivity DNA Assay
 Data Path: C:\...ioanalyzer\2100 expert\data\2014-07-17\2014-07-17_003_2.xad

Created: 7/17/2014 1:26:15 PM
 Modified: 7/17/2014 2:03:26 PM

Electropherogram Summary Continued ...



Overall Results for sample 7 : sample 11_2

Number of peaks found: 27 Corr. Area 1: 13,171.8
 Noise: 1.5

Peak table for sample 7 : sample 11_2

Peak	Size [bp]	Conc. [pg/μl]	Molarity [pmol/l]	Observations
1	35	125.00	5,411.3	Lower Marker
2	41	140.48	5,199.8	
3	53	72.37	2,080.8	
4	184	58.28	479.6	
5	272	2,580.59	14,349.6	
6	279	539.22	2,928.0	
7	288	808.38	4,251.4	
8	300	614.77	3,102.7	
9	309	716.23	3,514.7	
10	320	505.56	2,396.9	
11	335	891.95	4,034.6	
12	347	604.35	2,635.1	
13	369	1,239.33	5,094.7	
14	389	433.54	1,690.7	
15	396	471.50	1,804.4	
16	410	638.79	2,362.9	
17	432	373.01	1,309.7	
18	443	767.60	2,625.9	
19	480	217.68	686.8	
20	509	235.19	699.8	
21	557	31.11	84.6	
22	626	48.39	117.0	
23	720	40.75	85.8	
24	820	3.77	7.0	
25	10,380	75.00	10.9	Upper Marker
26	12,621	0.00	0.0	

Assay Class: High Sensitivity DNA Assay
 Data Path: C:\...ioanalyzer\2100 expert\data\2014-07-17\2014-07-17_003_2.xad

Created: 7/17/2014 1:26:15 PM
 Modified: 7/17/2014 2:03:26 PM

Electropherogram Summary Continued ...

... Peak table for sample 7 : sample 11_2

Peak	Size [bp]	Conc. [pg/ μ l]	Molarity [pmol/l]	Observations
27	13,889	0.00	0.0	
28	14,861	0.00	0.0	
29	15,749	0.00	0.0	

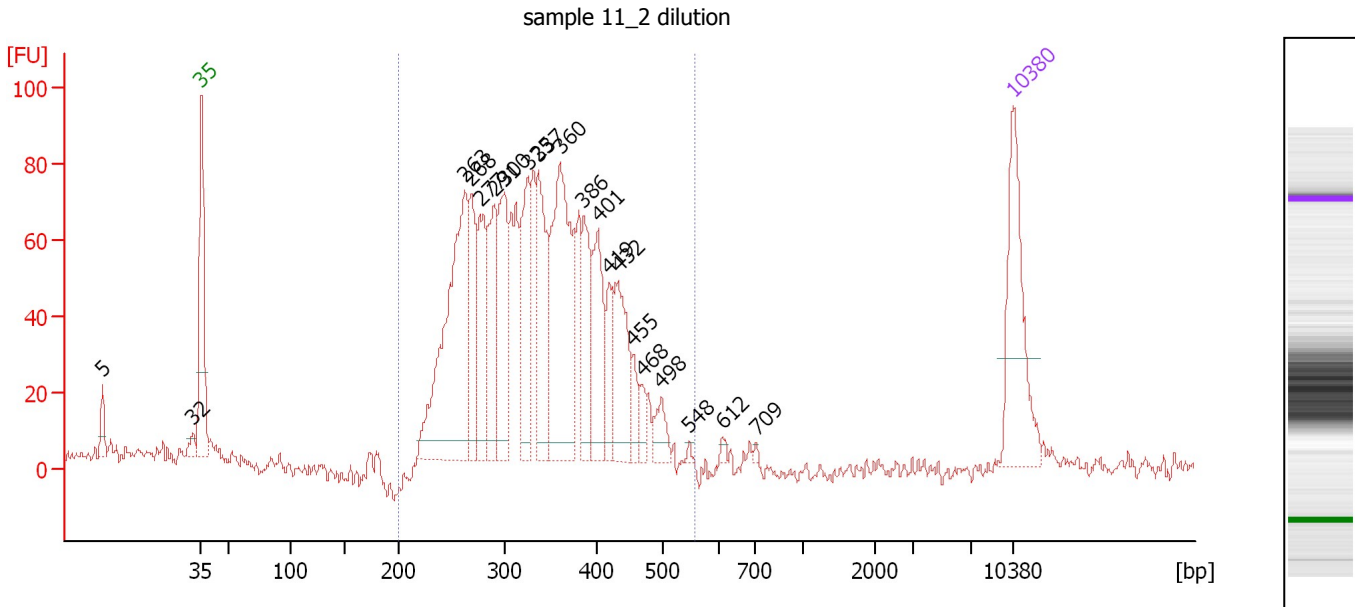
Region table for sample 7 : sample 11_2

From [bp]	To [bp]	Average Size [bp]	Molarity [pmol/l]	Conc. [pg/ μ l]	Co Corr. lor Area	% of Total	Size distribution in CV [%]
206	590	348	57,303.5	12,457.77	 13,171.8	97	20.0

Assay Class: High Sensitivity DNA Assay
 Data Path: C:\...ioanalyzer\2100 expert\data\2014-07-17\2014-07-17_003_2.xad

Created: 7/17/2014 1:26:15 PM
 Modified: 7/17/2014 2:03:26 PM

Electropherogram Summary Continued ...



Overall Results for sample 8 : sample 11_2 dilution

Number of peaks found: 20 Corr. Area 1: 1,553.4
 Noise: 2.2

Peak table for sample 8 : sample 11_2 dilution

Peak	Size [bp]	Conc. [pg/μl]	Molarity [pmol/l]	Observations
1	5	0.00	0.0	
2	32	0.00	0.0	
3	35	125.00	5,411.3	Lower Marker
4	263	238.82	1,378.3	
5	268	73.34	414.4	
6	277	80.61	441.4	
7	291	79.65	414.8	
8	300	94.23	475.8	
9	325	83.05	386.8	
10	337	94.47	425.0	
11	360	181.27	763.6	
12	386	59.62	234.3	
13	401	69.32	261.6	
14	419	28.86	104.5	
15	432	69.07	242.4	
16	455	19.30	64.3	
17	468	12.18	39.4	
18	498	18.80	57.2	
19	548	1.88	5.2	
20	612	3.07	7.6	
21	709	1.82	3.9	
22	10,380	75.00	10.9	Upper Marker

Region table for sample 8 : sample 11_2 dilution

From [bp]	To [bp]	Average Size [bp]	Molarity [pmol/l]	Conc. [pg/μl]	Co Corr. lor Area	% of Total	Size distribution in CV [%]
200	559	339	6,645.0	1,410.13	1,553.4	93	19.4

Assay Class: High Sensitivity DNA Assay
Data Path: C:\...ioanalyzer\2100 expert\data\2014-07-17\2014-07-17_003_2.xad

Created: 7/17/2014 1:26:15 PM
Modified: 7/17/2014 2:03:26 PM

Gel Image

Assay Class: High Sensitivity DNA Assay
 Data Path: C:\...ioanalyzer\2100 expert\data\2014-07-17\2014-07-17_003_2.xad

Created: 7/17/2014 1:26:15 PM
 Modified: 7/17/2014 2:03:26 PM

Run Logbook

Description	Number	Source	Category	Sub Category	Time	Time Zone	User	Host
Run aborted on port 1		Instrument	Run		7/17/2014 2:00:00 PM	(GMT --07:00) Pacific Standard Time	UC Davis	D8XSMGH1
Run started on port 1 (File: C:\Program Files\Agilent\2100 bioanalyzer\2100 expert\Data\2014-07-17\2014-07-17_003.xad)		Instrument	Run		7/17/2014 1:26:15 PM	(GMT --07:00) Pacific Standard Time	UC Davis	D8XSMGH1
Product Number : G2938B		Instrument	Run		7/17/2014 1:26:15 PM	(GMT --07:00) Pacific Standard Time	UC Davis	D8XSMGH1
Name :		Instrument	Run		7/17/2014 1:26:15 PM	(GMT --07:00) Pacific Standard Time	UC Davis	D8XSMGH1
Vendor : Agilent Technologies		Instrument	Run		7/17/2014 1:26:15 PM	(GMT --07:00) Pacific Standard Time	UC Davis	D8XSMGH1
Serial# : DE13701086		Instrument	Run		7/17/2014 1:26:15 PM	(GMT --07:00) Pacific Standard Time	UC Davis	D8XSMGH1
Firmware : C.01.069		Instrument	Run		7/17/2014 1:26:15 PM	(GMT --07:00) Pacific Standard Time	UC Davis	D8XSMGH1
Cartridge : Electrode		Instrument	Run		7/17/2014 1:26:15 PM	(GMT --07:00) Pacific Standard Time	UC Davis	D8XSMGH1