

Assay Class: High Sensitivity DNA Assay  
Data Path: C:\... bioanalyzer\2100 expert\Data\2014-08-13\2014-08-13\_001.xad

Created: 8/13/2014 7:22:36 AM  
Modified: 8/13/2014 8:09:31 AM

**Electrophoresis File Run Summary**

Instrument Information:

Instrument Name: DE13701086      Firmware: C.01.069  
Serial#: DE13701086      Type: G2938B

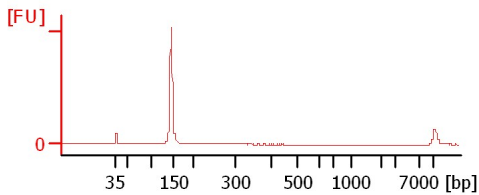
Assay Information:

Assay Origin Path: C:\Program Files\Agilent\2100 bioanalyzer\2100 expert\assays\dsDNA\High Sensitivity DNA.xsy  
Assay Class: High Sensitivity DNA Assay  
Version: 1.03  
Assay Comments: Copyright © 2003-2010 Agilent Technologies

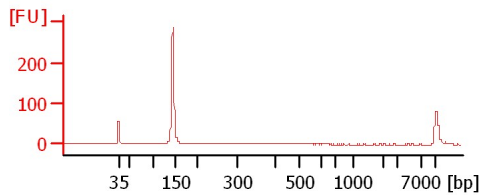
Chip Information:

Chip Lot #:  
Reagent Kit Lot #:  
Chip Comments:

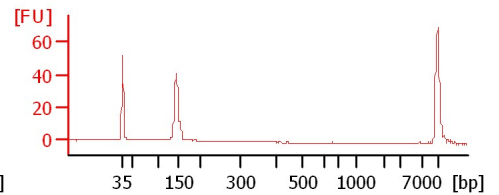
**PI2-1 Size selected**



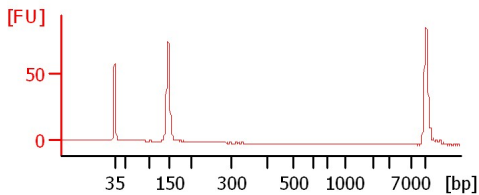
**PI1-2 Size Selected**



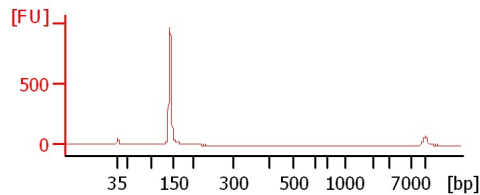
**Rb90-2 Size Selected**



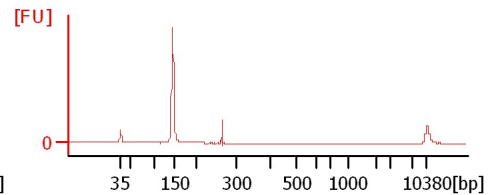
**Rb84-2 Size Selected**



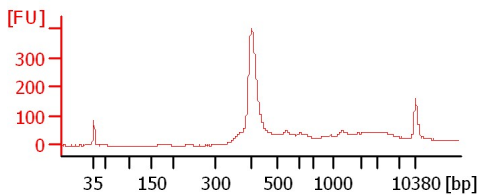
**1003.3 Size Selected**



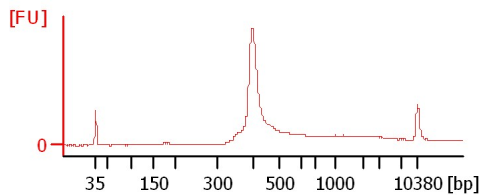
**1006.3 Size Selected**



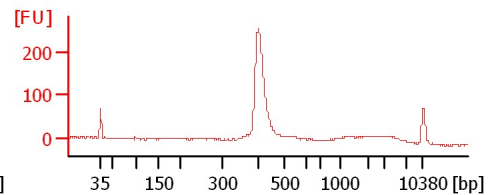
**Boyce Plate 2 1:20**



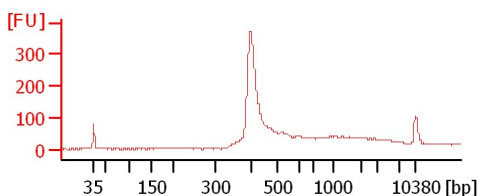
**Boyce Plate 3 1:20**



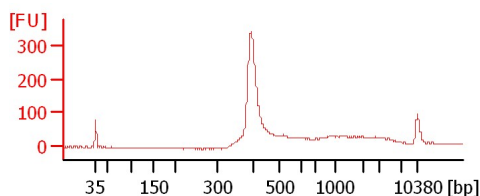
**Boyce Plate 4 1:20**



**Boyce Plate 5 1:20**



**WB329 1:20**



Assay Class: High Sensitivity DNA Assay  
 Data Path: C:\... bioanalyzer\2100 expert\Data\2014-08-13\2014-08-13\_001.xad

Created: 8/13/2014 7:22:36 AM  
 Modified: 8/13/2014 8:09:31 AM

**Electrophoresis File Run Summary (Chip Summary)**

Sample Name	Sample Comment	Rest. Digest	Status	Observation	Result Label	Result Color
PI2-1 Size slected		<input type="checkbox"/>	✓			
PI1-2 Size Selected		<input type="checkbox"/>	✓			
Rb90-2 Size Selected		<input type="checkbox"/>	✓			
Rb84-2 Size Selected		<input type="checkbox"/>	✓			
1003.3 Size Selected		<input type="checkbox"/>	✓			
1006.3 Size Selected		<input type="checkbox"/>	✓			
Boyce Plate 2 1:20		<input type="checkbox"/>	✓			
Boyce Plate 3 1:20		<input type="checkbox"/>	✓			
Boycc Plate 4 1:20		<input type="checkbox"/>	✓			
Boyce Plate 5 1:20		<input type="checkbox"/>	✓			
WB329 1:20		<input type="checkbox"/>	✓			
Ladder		<input type="checkbox"/>	✓			

**Chip Lot #**

**Reagent Kit Lot #**

**Chip Comments :**

Assay Class: High Sensitivity DNA Assay  
Data Path: C:\... bioanalyzer\2100 expert\Data\2014-08-13\2014-08-13\_001.xad

Created: 8/13/2014 7:22:36 AM  
Modified: 8/13/2014 8:09:31 AM

## Electrophoresis Assay Details

### General Analysis Settings

Number of Available Sample and Ladder Wells (Max.) : 12  
Minimum Visible Range [s] : 32  
Maximum Visible Range [s] : 138  
Start Analysis Time Range [s] : 33  
End Analysis Time Range [s] : 137.5  
Ladder Concentration [pg/ $\mu$ l] : 1950  
Uses Standard Area for Ladder Fragments  
Lower Marker Concentration [pg/ $\mu$ l] : 125  
Upper Marker Concentration [pg/ $\mu$ l] : 75  
Used Upper Marker for Quantitation  
Standard Curve Fit is Point to Point  
Show Data Aligned to Lower and Upper Marker

### Integrator Settings

Integration Start Time [s] : 33.05  
Integration End Time [s] : 137  
Slope Threshold : 0.8  
Height Threshold [FU] : 5  
Area Threshold : 0.1  
Width Threshold [s] : 0.6  
Baseline Plateau [s] : 0.5

### Filter Settings

Filter Width [s] : 0.5  
Polynomial Order : 4

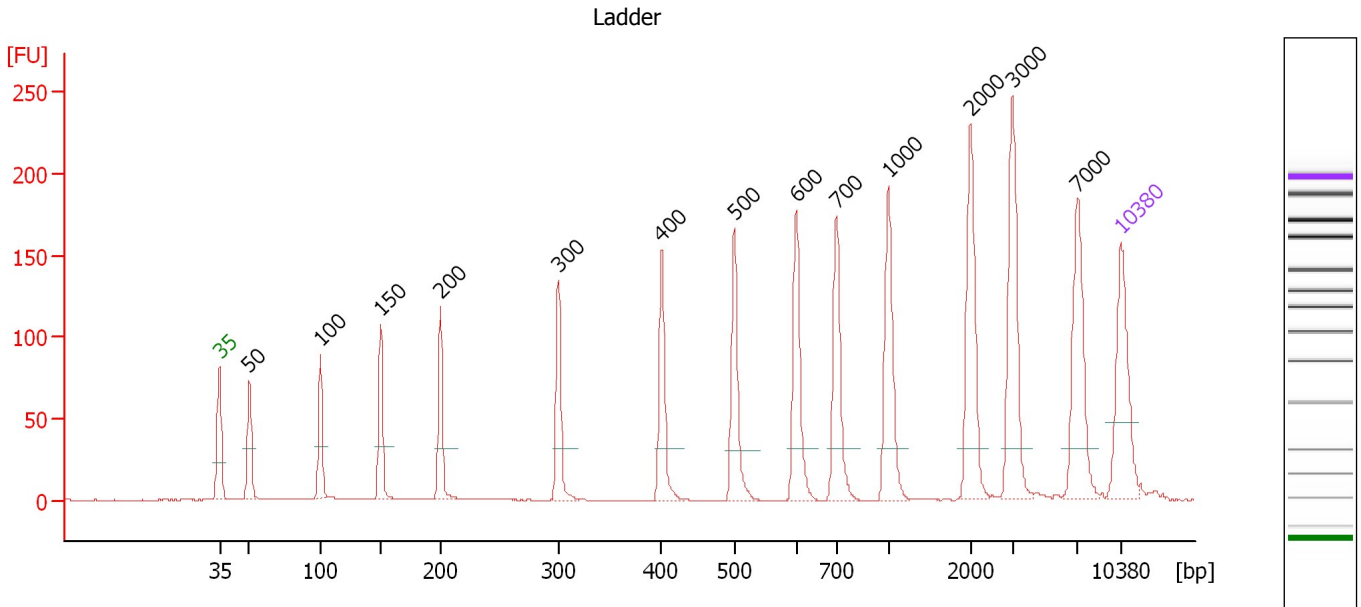
### Ladder

Ladder Peak	Size	Area
1	35	160
2	50	210
3	100	208
4	150	221
5	200	242
6	300	270
7	400	305
8	500	306
9	600	336
10	700	321
11	1000	366
12	2000	413
13	3000	411
14	7000	400
15	10380	214

Assay Class: High Sensitivity DNA Assay  
 Data Path: C:\... bioanalyzer\2100 expert\Data\2014-08-13\2014-08-13\_001.xad

Created: 8/13/2014 7:22:36 AM  
 Modified: 8/13/2014 8:09:31 AM

**Electropherogram Summary**



**Overall Results for Ladder**

Noise: 0.2

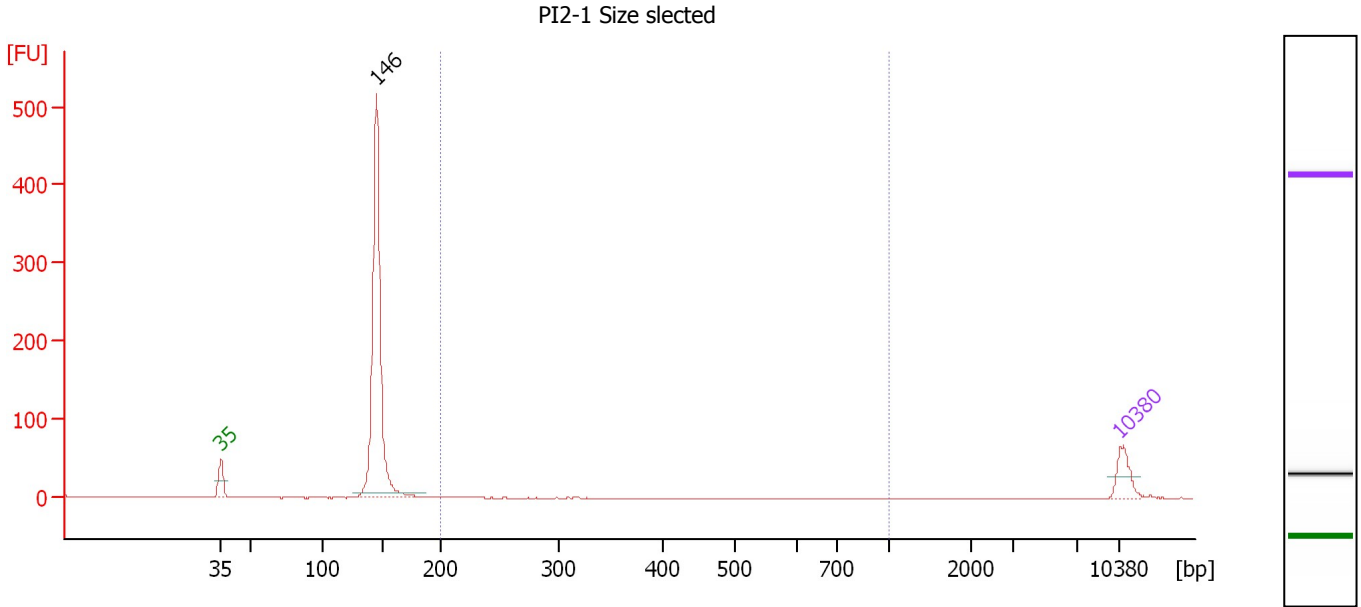
**Peak table for Ladder**

Peak	Size [bp]	Conc. [pg/μl]	Molarity [pmol/l]	Observations
1	35	125.00	5,411.3	Lower Marker
2	50	150.00	4,545.5	Ladder Peak
3	100	150.00	2,272.7	Ladder Peak
4	150	150.00	1,515.2	Ladder Peak
5	200	150.00	1,136.4	Ladder Peak
6	300	150.00	757.6	Ladder Peak
7	400	150.00	568.2	Ladder Peak
8	500	150.00	454.5	Ladder Peak
9	600	150.00	378.8	Ladder Peak
10	700	150.00	324.7	Ladder Peak
11	1,000	150.00	227.3	Ladder Peak
12	2,000	150.00	113.6	Ladder Peak
13	3,000	150.00	75.8	Ladder Peak
14	7,000	150.00	32.5	Ladder Peak
15	10,380	75.00	10.9	Upper Marker

Assay Class: High Sensitivity DNA Assay  
 Data Path: C:\... bioanalyzer\2100 expert\Data\2014-08-13\2014-08-13\_001.xad

Created: 8/13/2014 7:22:36 AM  
 Modified: 8/13/2014 8:09:31 AM

**Electropherogram Summary Continued ...**



**Overall Results for sample 1 : PI2-1 Size selected**

Number of peaks found: 1                      Corr. Area 1: 2.3  
 Noise: 0.2

**Peak table for sample 1 : PI2-1 Size selected**

Peak	Size [bp]	Conc. [pg/μl]	Molarity [pmol/l]	Observations
1	35	125.00	5,411.3	Lower Marker
2	146	1,446.62	15,024.8	
3	10,380	75.00	10.9	Upper Marker

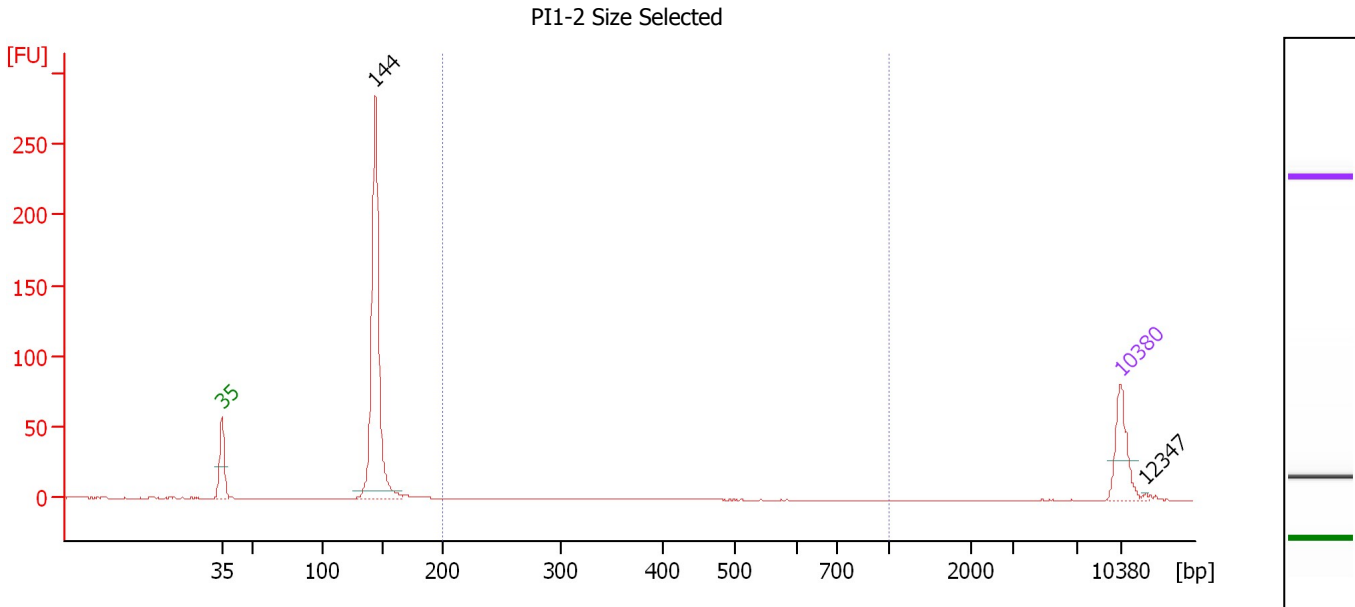
**Region table for sample 1 : PI2-1 Size selected**

From [bp]	To [bp]	Average Size [bp]	Molarity [pmol/l]	Conc. [pg/μl]	Co Corr. lor Area	% of Total	Size distribution in CV [%]
200	1,000	239	27.1	4.12	2.3	0	22.4

Assay Class: High Sensitivity DNA Assay  
 Data Path: C:\... bioanalyzer\2100 expert\Data\2014-08-13\2014-08-13\_001.xad

Created: 8/13/2014 7:22:36 AM  
 Modified: 8/13/2014 8:09:31 AM

**Electropherogram Summary Continued ...**



**Overall Results for sample 2 : PI1-2 Size Selected**

Number of peaks found: 2                      Corr. Area 1: 0.6  
 Noise: 0.1

**Peak table for sample 2 : PI1-2 Size Selected**

Peak	Size [bp]	Conc. [pg/μl]	Molarity [pmol/l]	Observations
1	35	125.00	5,411.3	Lower Marker
2	144	704.95	7,430.8	
3	10,380	75.00	10.9	Upper Marker
4	12,347	0.00	0.0	

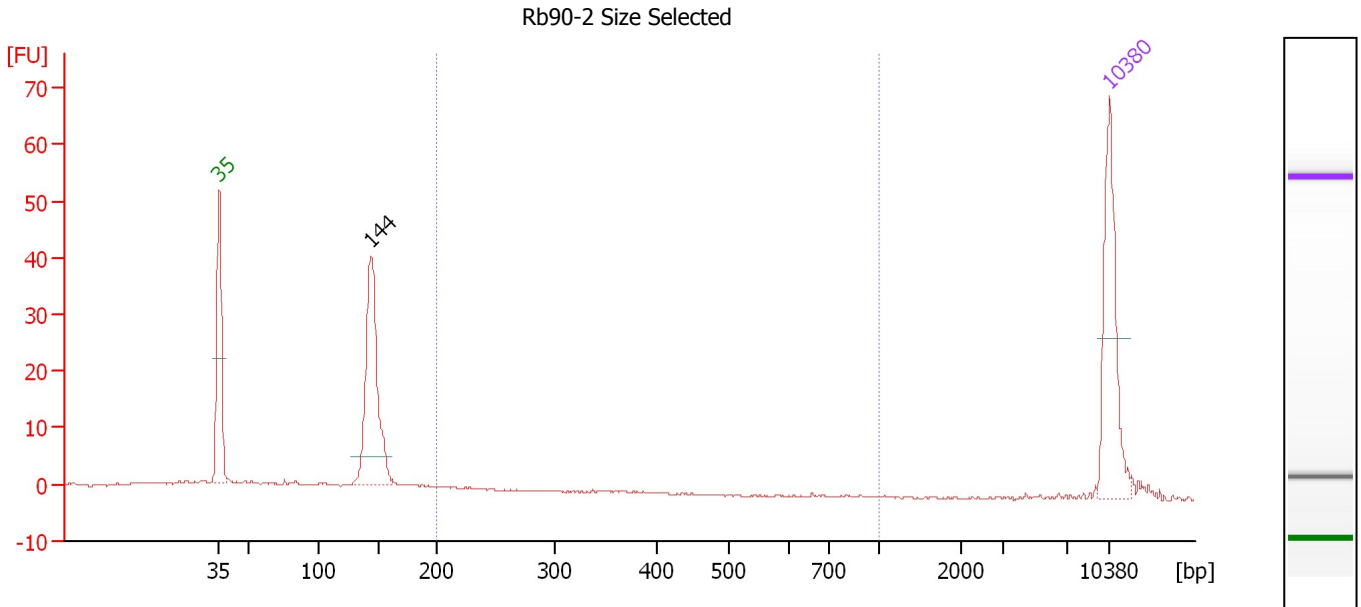
**Region table for sample 2 : PI1-2 Size Selected**

From [bp]	To [bp]	Average Size [bp]	Molarity [pmol/l]	Conc. [pg/μl]	Co Corr. lor Area	% of Total	Size distribution in CV [%]
200	1,000	271	5.6	0.97	0.6	0	19.5

Assay Class: High Sensitivity DNA Assay  
 Data Path: C:\... bioanalyzer\2100 expert\Data\2014-08-13\2014-08-13\_001.xad

Created: 8/13/2014 7:22:36 AM  
 Modified: 8/13/2014 8:09:31 AM

**Electropherogram Summary Continued ...**



**Overall Results for sample 3 : Rb90-2 Size Selected**

Number of peaks found: 1                      Corr. Area 1: 0.4  
 Noise: 0.1

**Peak table for sample 3 : Rb90-2 Size Selected**

Peak	Size [bp]	Conc. [pg/μl]	Molarity [pmol/l]	Observations
1	35	125.00	5,411.3	Lower Marker
2	144	181.35	1,902.4	
3	10,380	75.00	10.9	Upper Marker

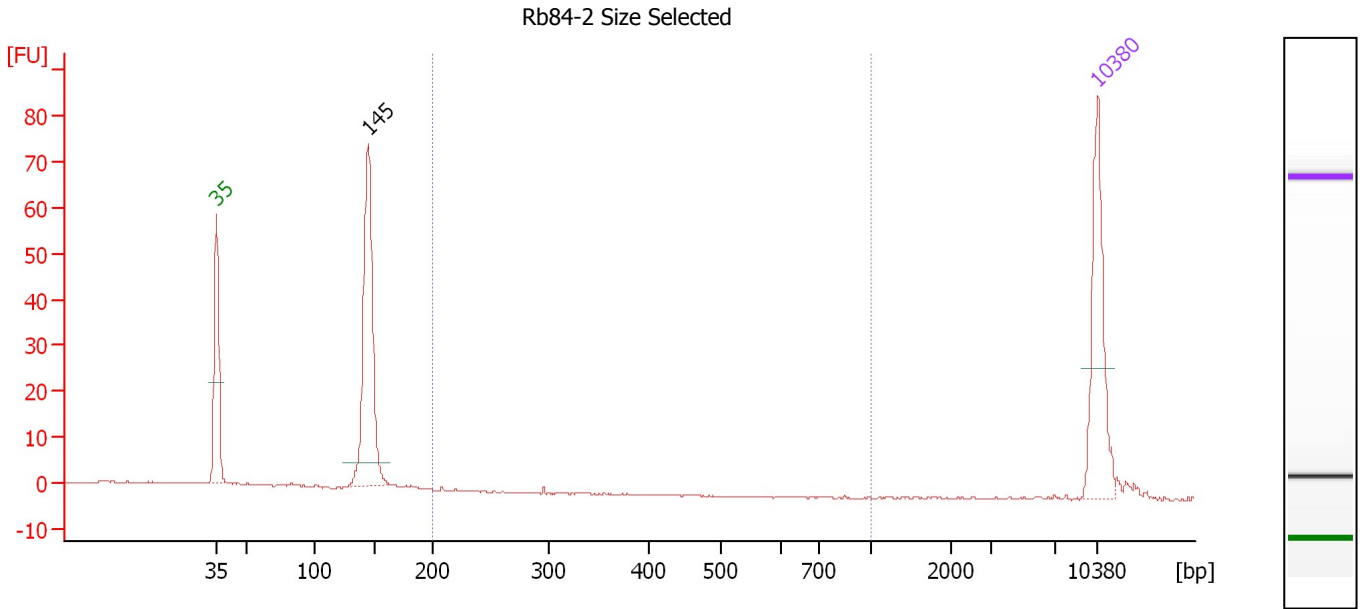
**Region table for sample 3 : Rb90-2 Size Selected**

From [bp]	To [bp]	Average Size [bp]	Molarity [pmol/l]	Conc. [pg/μl]	Co Corr. lor Area	% of Total	Size distribution in CV [%]
200	1,000	212	5.4	0.76	0.4	0	5.9

Assay Class: High Sensitivity DNA Assay  
 Data Path: C:\... bioanalyzer\2100 expert\Data\2014-08-13\2014-08-13\_001.xad

Created: 8/13/2014 7:22:36 AM  
 Modified: 8/13/2014 8:09:31 AM

**Electropherogram Summary Continued ...**



**Overall Results for sample 4 : Rb84-2 Size Selected**

Number of peaks found: 1                      Corr. Area 1: 0.0  
 Noise: 0.2

**Peak table for sample 4 : Rb84-2 Size Selected**

Peak	Size [bp]	Conc. [pg/μl]	Molarity [pmol/l]	Observations
1	35	125.00	5,411.3	Lower Marker
2	145	225.28	2,349.2	
3	10,380	75.00	10.9	Upper Marker

**Region table for sample 4 : Rb84-2 Size Selected**

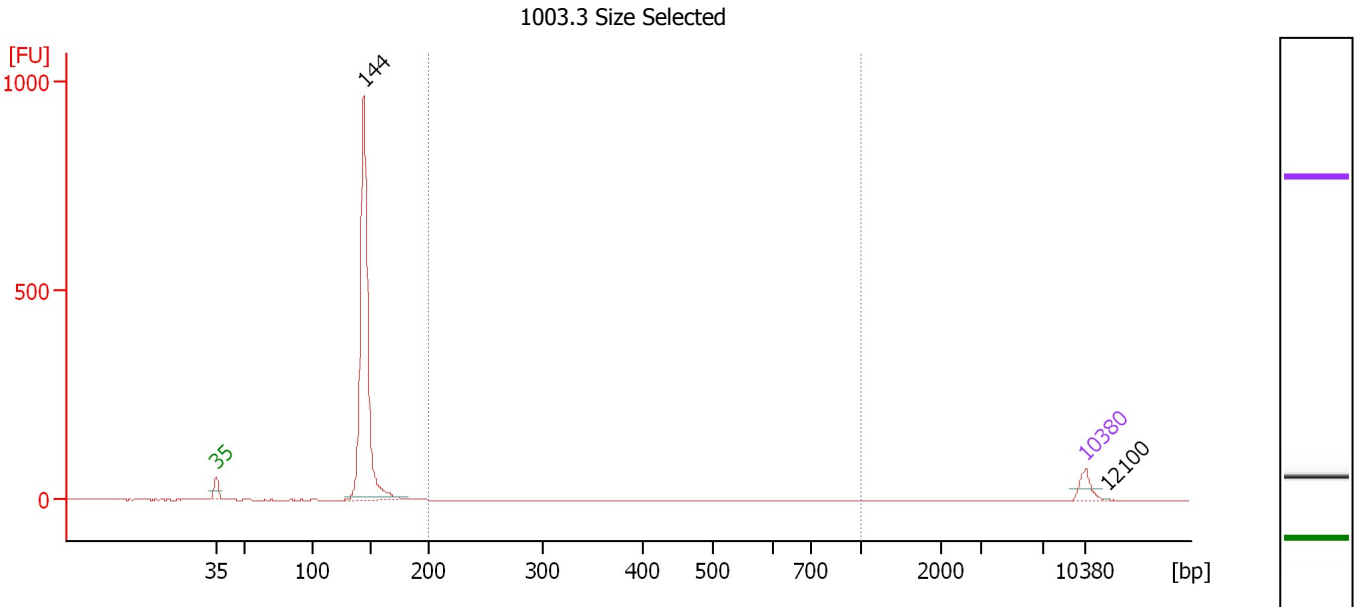
From [bp]	To [bp]	Average Size [bp]	Molarity [pmol/l]	Conc. [pg/μl]	Co Corr. lor Area	% of Total	Size distribution in CV [%]
200	1,000	275	0.4	0.07	0.0	0	13.6



Assay Class: High Sensitivity DNA Assay  
 Data Path: C:\... bioanalyzer\2100 expert\Data\2014-08-13\2014-08-13\_001.xad

Created: 8/13/2014 7:22:36 AM  
 Modified: 8/13/2014 8:09:31 AM

**Electropherogram Summary Continued ...**



**Overall Results for sample 5 : 1003.3 Size Selected**

Number of peaks found: 2                      Corr. Area 1: 1.2  
 Noise: 0.1

**Peak table for sample 5 : 1003.3 Size Selected**

Peak	Size [bp]	Conc. [pg/μl]	Molarity [pmol/l]	Observations
1	35	125.00	5,411.3	Lower Marker
2	144	2,608.34	27,523.6	
3	10,380	75.00	10.9	Upper Marker
4	12,100	0.00	0.0	

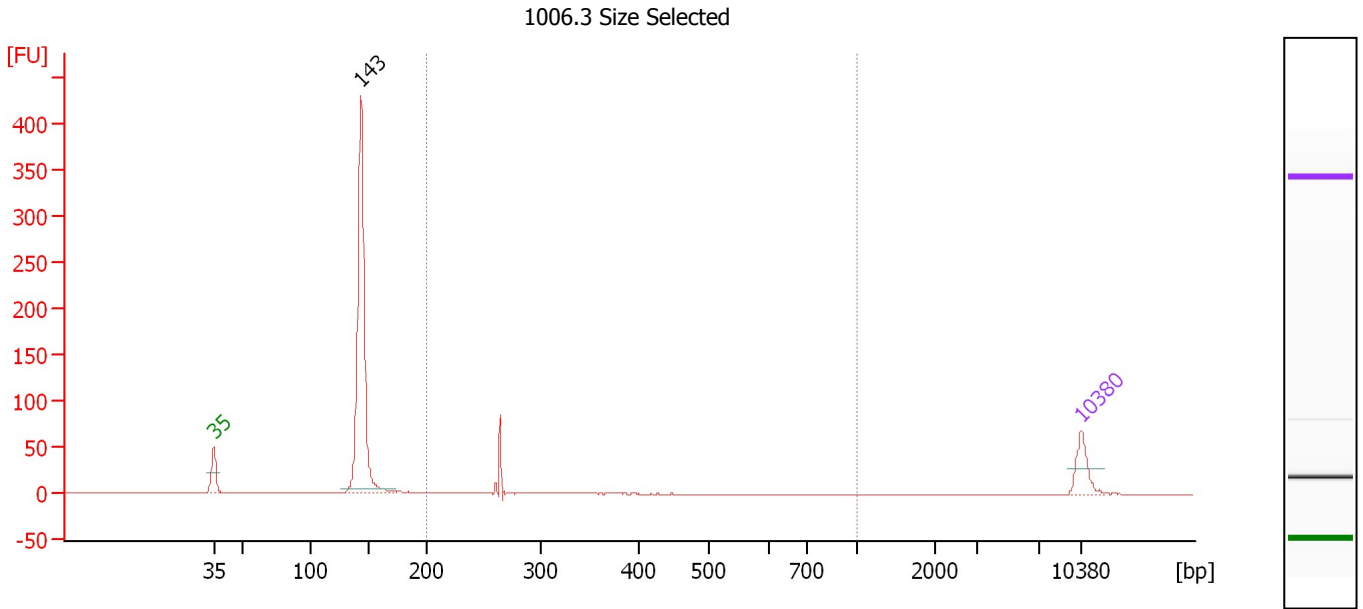
**Region table for sample 5 : 1003.3 Size Selected**

From [bp]	To [bp]	Average Size [bp]	Molarity [pmol/l]	Conc. [pg/μl]	Co Corr. lor Area	% of Total	Size distribution in CV [%]
200	1,000	208	14.8	2.04	1.2	0	2.6

Assay Class: High Sensitivity DNA Assay  
 Data Path: C:\... bioanalyzer\2100 expert\Data\2014-08-13\2014-08-13\_001.xad

Created: 8/13/2014 7:22:36 AM  
 Modified: 8/13/2014 8:09:31 AM

**Electropherogram Summary Continued ...**



**Overall Results for sample 6 : 1006.3 Size Selected**

Number of peaks found: 1                      Corr. Area 1: 28.8  
 Noise: 0.1

**Peak table for sample 6 : 1006.3 Size Selected**

Peak	Size [bp]	Conc. [pg/μl]	Molarity [pmol/l]	Observations
1	35	125.00	5,411.3	Lower Marker
2	143	1,164.99	12,317.5	
3	10,380	75.00	10.9	Upper Marker

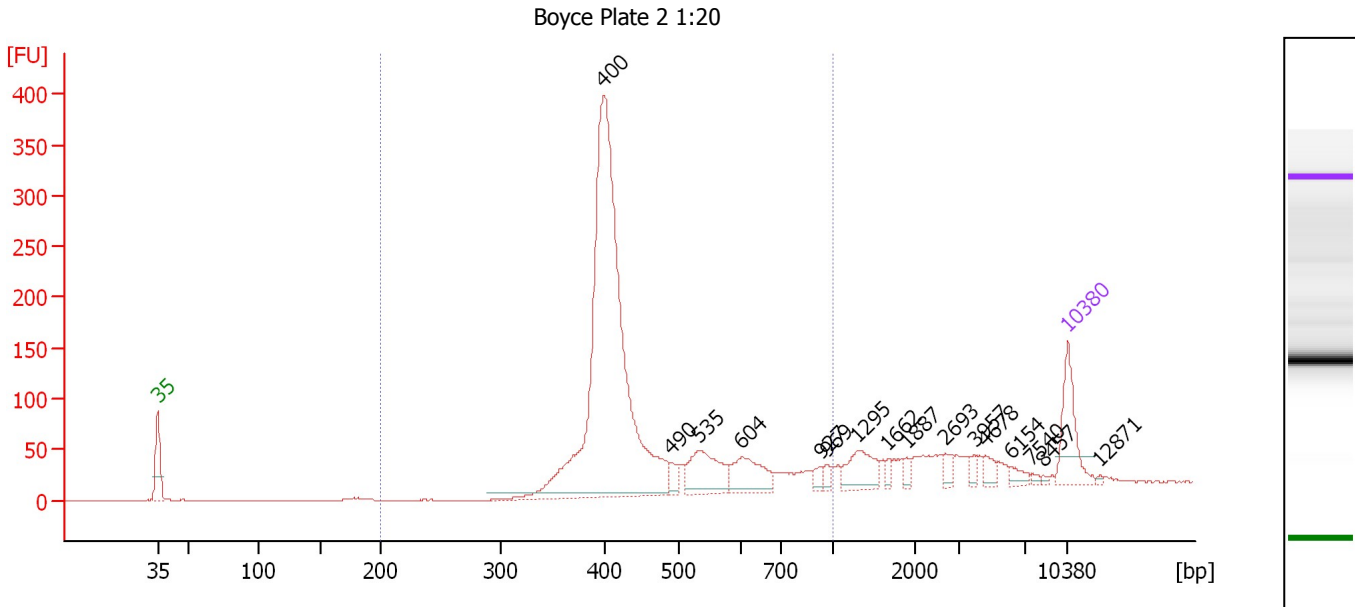
**Region table for sample 6 : 1006.3 Size Selected**

From [bp]	To [bp]	Average Size [bp]	Molarity [pmol/l]	Conc. [pg/μl]	Co Corr. lor Area	% of Total	Size distribution in CV [%]
200	1,000	265	304.0	53.08	28.8	5	4.4

Assay Class: High Sensitivity DNA Assay  
 Data Path: C:\... bioanalyzer\2100 expert\Data\2014-08-13\2014-08-13\_001.xad

Created: 8/13/2014 7:22:36 AM  
 Modified: 8/13/2014 8:09:31 AM

**Electropherogram Summary Continued ...**



**Overall Results for sample 7 : Boyce Plate 2 1:20**

Number of peaks found: 16                      Corr. Area 1: 1,675.3  
 Noise: 0.1

**Peak table for sample 7 : Boyce Plate 2 1:20**

Peak	Size [bp]	Conc. [pg/μl]	Molarity [pmol/l]	Observations
1	35	125.00	5,411.3	Lower Marker
2	400	1,089.32	4,130.2	
3	490	23.03	71.3	
4	535	107.53	304.7	
5	604	78.30	196.5	
6	927	12.89	21.1	
7	969	9.82	15.3	
8	1,295	59.74	69.9	
9	1,662	10.00	9.1	
10	1,887	9.84	7.9	
11	2,693	15.89	8.9	
12	3,957	10.90	4.2	
13	4,678	15.29	5.0	
14	6,154	12.97	3.2	
15	7,540	4.18	0.8	
16	8,457	3.32	0.6	
17	10,380	75.00	10.9	Upper Marker
18	12,871	0.00	0.0	

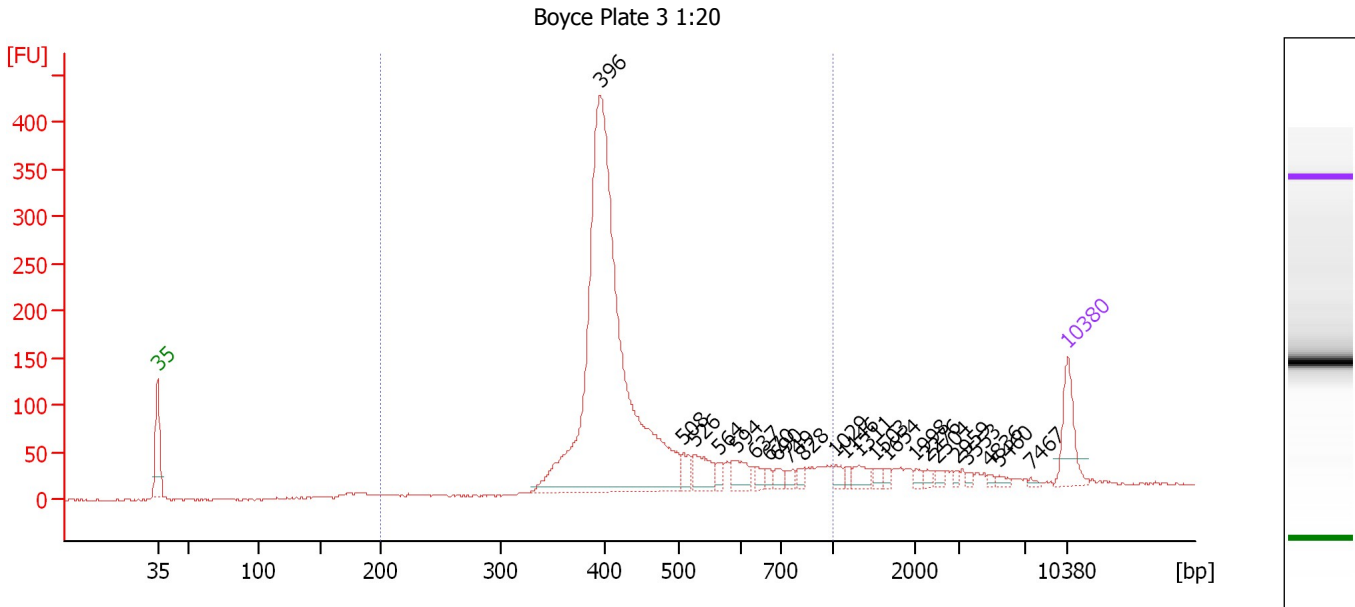
**Region table for sample 7 : Boyce Plate 2 1:20**

From [bp]	To [bp]	Average Size [bp]	Molarity [pmol/l]	Conc. [pg/μl]	Co Corr. lor Area	% of Total	Size distribution in CV [%]
200	1,000	460	4,338.1	1,245.88	1,675.3	80	25.7

Assay Class: High Sensitivity DNA Assay  
 Data Path: C:\... bioanalyzer\2100 expert\Data\2014-08-13\2014-08-13\_001.xad

Created: 8/13/2014 7:22:36 AM  
 Modified: 8/13/2014 8:09:31 AM

**Electropherogram Summary Continued ...**



**Overall Results for sample 8 : Boyce Plate 3 1:20**

Number of peaks found: 23                      Corr. Area 1: 2,083.2  
 Noise: 0.9

**Peak table for sample 8 : Boyce Plate 3 1:20**

Peak	Size [bp]	Conc. [pg/μl]	Molarity [pmol/l]	Observations
1	35	125.00	5,411.3	Lower Marker
2	396	1,460.85	5,586.1	
3	508	32.83	98.0	
4	526	60.86	175.3	
5	564	18.24	49.0	
6	594	41.98	107.0	
7	637	16.59	39.5	
8	670	12.19	27.5	
9	690	18.55	40.7	
10	749	13.44	27.2	
11	828	12.26	22.4	
12	1,029	15.06	22.2	
13	1,146	10.19	13.5	
14	1,311	24.82	28.7	
15	1,503	12.04	12.1	
16	1,654	8.58	7.9	
17	1,998	9.52	7.2	
18	2,276	9.63	6.4	
19	2,504	8.35	5.1	
20	2,959	6.14	3.1	
21	3,553	5.35	2.3	
22	4,836	4.89	1.5	
23	5,460	7.21	2.0	
24	7,467	3.79	0.8	
25	10,380	75.00	10.9	Upper Marker

Assay Class: High Sensitivity DNA Assay  
Data Path: C:\... bioanalyzer\2100 expert\Data\2014-08-13\2014-08-13\_001.xad

Created: 8/13/2014 7:22:36 AM  
Modified: 8/13/2014 8:09:31 AM

**Electropherogram Summary Continued ...**

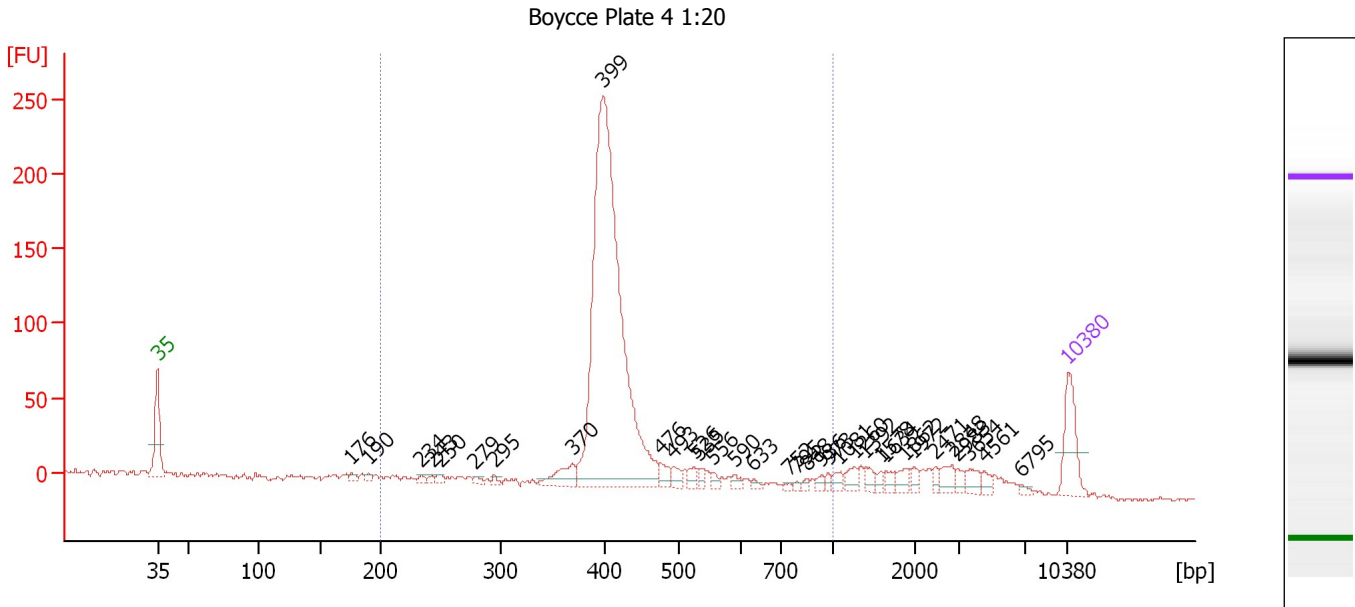
... Region table for sample 8 : Boyce Plate 3 1:20

From [bp]	To [bp]	Average Size [bp]	Molarity [pmol/l]	Conc. [pg/μl]	Co Corr. lor Area	% of Total	Size distribution in CV [%]
200	1,000	459	6,121.1	1,749.48	■ 2,083.2	87	26.4

Assay Class: High Sensitivity DNA Assay  
 Data Path: C:\... bioanalyzer\2100 expert\Data\2014-08-13\2014-08-13\_001.xad

Created: 8/13/2014 7:22:36 AM  
 Modified: 8/13/2014 8:09:31 AM

**Electropherogram Summary Continued ...**



**Overall Results for sample 9 : Boyccce Plate 4 1:20**

Number of peaks found: 34                      Corr. Area 1: 1,073.5  
 Noise: 1.3

**Peak table for sample 9 : Boyccce Plate 4 1:20**

Peak	Size [bp]	Conc. [pg/μl]	Molarity [pmol/l]	Observations
1	35	125.00	5,411.3	Lower Marker
2	176	9.83	84.7	
3	190	9.09	72.5	
4	234	7.48	48.4	
5	243	6.84	42.6	
6	250	9.75	59.0	
7	279	8.41	45.7	
8	295	6.68	34.3	
9	370	50.52	207.0	
10	399	1,219.83	4,633.1	
11	476	25.82	82.2	
12	493	17.98	55.2	
13	526	17.51	50.4	
14	535	12.25	34.7	
15	556	9.75	26.6	
16	590	11.32	29.1	
17	633	6.78	16.2	
18	752	5.50	11.1	
19	795	4.54	8.7	
20	848	6.27	11.2	
21	936	8.17	13.2	
22	973	8.12	12.7	
23	1,081	13.96	19.6	
24	1,260	18.87	22.7	
25	1,392	14.82	16.1	
26	1,578	9.22	8.9	

Assay Class: High Sensitivity DNA Assay  
 Data Path: C:\... bioanalyzer\2100 expert\Data\2014-08-13\2014-08-13\_001.xad

Created: 8/13/2014 7:22:36 AM  
 Modified: 8/13/2014 8:09:31 AM

### Electropherogram Summary Continued ...

#### ... Peak table for sample 9 : Boyccce Plate 4 1:20

Peak	Size [bp]	Conc. [pg/μl]	Molarity [pmol/l]	Observations
27	1,634	12.28	11.4	
28	1,862	15.97	13.0	
29	1,972	12.85	9.9	
30	2,471	10.17	6.2	
31	2,848	21.75	11.6	
32	2,983	12.29	6.2	
33	3,654	19.78	8.2	
34	4,561	11.36	3.8	
35	6,795	5.95	1.3	
36	▶ 10,380	75.00	10.9	Upper Marker

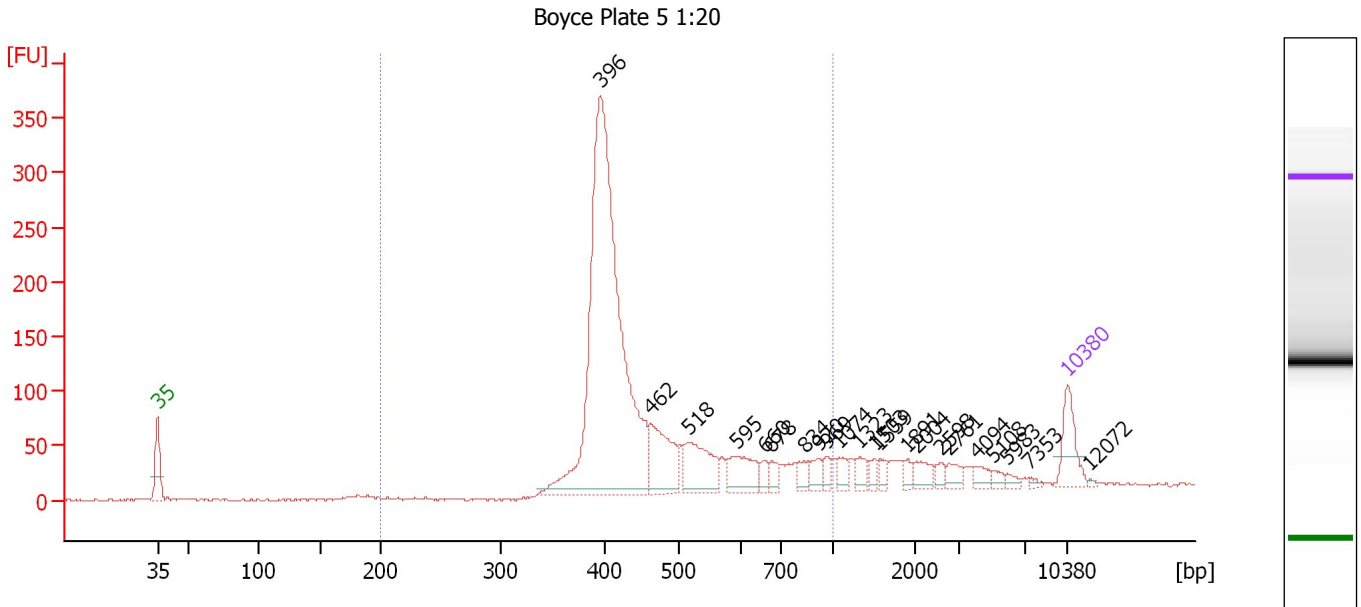
#### Region table for sample 9 : Boyccce Plate 4 1:20

From [bp]	To [bp]	Average Size [bp]	Molarity [pmol/l]	Conc. [pg/μl]	Co Corr. for Area	% of Total	Size distribution in CV [%]
200	1,000	432	5,750.8	1,544.58	■ 1,073.5	75	24.4

Assay Class: High Sensitivity DNA Assay  
 Data Path: C:\... bioanalyzer\2100 expert\Data\2014-08-13\2014-08-13\_001.xad

Created: 8/13/2014 7:22:36 AM  
 Modified: 8/13/2014 8:09:31 AM

**Electropherogram Summary Continued ...**



**Overall Results for sample 10 : Boyce Plate 5 1:20**

Number of peaks found: 22                      Corr. Area 1: 1,818.3  
 Noise: 1.2

**Peak table for sample 10 : Boyce Plate 5 1:20**

Peak	Size [bp]	Conc. [pg/μl]	Molarity [pmol/l]	Observations
1	35	125.00	5,411.3	Lower Marker
2	396	1,475.97	5,645.4	
3	462	174.38	571.5	
4	518	153.37	448.6	
5	595	91.02	231.7	
6	660	22.51	51.7	
7	678	27.75	62.0	
8	834	32.29	58.7	
9	920	29.86	49.2	
10	969	20.86	32.6	
11	1,074	26.48	37.4	
12	1,323	25.83	29.6	
13	1,503	17.23	17.4	
14	1,559	16.83	16.4	
15	1,891	19.23	15.4	
16	2,004	32.68	24.7	
17	2,598	17.07	10.0	
18	2,761	23.95	13.1	
19	4,094	21.33	7.9	
20	5,108	12.40	3.7	
21	5,983	11.02	2.8	
22	7,353	6.58	1.4	
23	10,380	75.00	10.9	Upper Marker
24	12,072	0.00	0.0	



Assay Class: High Sensitivity DNA Assay  
Data Path: C:\... bioanalyzer\2100 expert\Data\2014-08-13\2014-08-13\_001.xad

Created: 8/13/2014 7:22:36 AM  
Modified: 8/13/2014 8:09:31 AM

**Electropherogram Summary Continued ...**

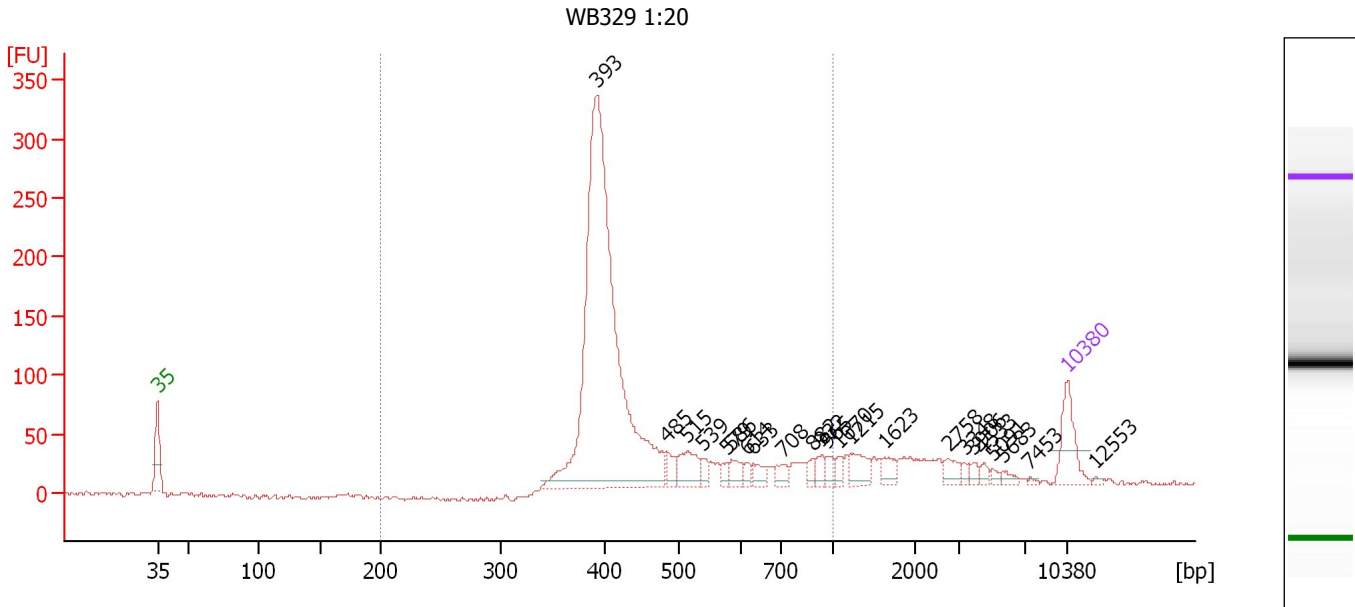
... Region table for sample 10 : Boyce Plate 5 1:20

From [bp]	To [bp]	Average Size [bp]	Molarity [pmol/l]	Conc. [pg/μl]	Co Corr. lor Area	% of Total	Size distribution in CV [%]
200	1,000	476	6,979.1	2,052.41	■ 1,818.3	84	27.4

Assay Class: High Sensitivity DNA Assay  
 Data Path: C:\... bioanalyzer\2100 expert\Data\2014-08-13\2014-08-13\_001.xad

Created: 8/13/2014 7:22:36 AM  
 Modified: 8/13/2014 8:09:31 AM

**Electropherogram Summary Continued ...**



**Overall Results for sample 11 : WB329 1:20**

Number of peaks found: 23                      Corr. Area 1: 1,492.2  
 Noise: 1.8

**Peak table for sample 11 : WB329 1:20**


Peak	Size [bp]	Conc. [pg/μl]	Molarity [pmol/l]	Observations
1	35	125.00	5,411.3	Lower Marker
2	393	1,441.74	5,560.2	
3	485	32.86	102.7	
4	515	71.73	211.1	
5	539	19.61	55.2	
6	579	17.31	45.3	
7	586	30.28	78.3	
8	614	16.38	40.4	
9	633	24.79	59.4	
10	708	23.62	50.5	
11	882	15.86	27.2	
12	932	22.19	36.1	
13	965	20.24	31.8	
14	1,070	15.99	22.6	
15	1,215	41.86	52.2	
16	1,623	24.10	22.5	
17	2,758	24.54	13.5	
18	3,348	9.88	4.5	
19	3,906	11.45	4.4	
20	4,533	11.09	3.7	
21	5,091	7.74	2.3	
22	5,683	11.29	3.0	
23	7,453	3.21	0.7	
24	10,380	75.00	10.9	Upper Marker
25	12,553	0.00	0.0	

Assay Class: High Sensitivity DNA Assay  
Data Path: C:\... bioanalyzer\2100 expert\Data\2014-08-13\2014-08-13\_001.xad

Created: 8/13/2014 7:22:36 AM  
Modified: 8/13/2014 8:09:31 AM

**Electropherogram Summary Continued ...**

... Region table for sample 11 : WB329 1:20

From [bp]	To [bp]	Average Size [bp]	Molarity [pmol/l]	Conc. [pg/μl]	Co Corr. lor Area	% of Total	Size distribution in CV [%]
200	1,000	464	6,261.3	1,790.81	 1,492.2	83	28.6

---

Assay Class: High Sensitivity DNA Assay  
Data Path: C:\... bioanalyzer\2100 expert\Data\2014-08-13\2014-08-13\_001.xad

Created: 8/13/2014 7:22:36 AM  
Modified: 8/13/2014 8:09:31 AM

**Gel Image**

Assay Class: High Sensitivity DNA Assay  
 Data Path: C:\... bioanalyzer\2100 expert\Data\2014-08-13\2014-08-13\_001.xad

Created: 8/13/2014 7:22:36 AM  
 Modified: 8/13/2014 8:09:31 AM

**Run Logbook**

Description	Number	Source	Category	Sub Category	Time	Time Zone	User	Host
Run ended on port 1 (Number of wells acquired: 12)		Instrument	Run		8/13/2014 8:03:55 AM	(GMT --07:00) Pacific Standard Time	UC Davis	D8XSMGH1
Run started on port 1 (File: C:\Program Files\Agilent\2100 bioanalyzer\2100 expert\Data\2014-08-13\2014-08-13_001.xad)		Instrument	Run		8/13/2014 7:22:41 AM	(GMT --07:00) Pacific Standard Time	UC Davis	D8XSMGH1
Product Number : G2938B		Instrument	Run		8/13/2014 7:22:41 AM	(GMT --07:00) Pacific Standard Time	UC Davis	D8XSMGH1
Name :		Instrument	Run		8/13/2014 7:22:41 AM	(GMT --07:00) Pacific Standard Time	UC Davis	D8XSMGH1
Vendor : Agilent Technologies		Instrument	Run		8/13/2014 7:22:41 AM	(GMT --07:00) Pacific Standard Time	UC Davis	D8XSMGH1
Serial# : DE13701086		Instrument	Run		8/13/2014 7:22:41 AM	(GMT --07:00) Pacific Standard Time	UC Davis	D8XSMGH1
Firmware : C.01.069		Instrument	Run		8/13/2014 7:22:41 AM	(GMT --07:00) Pacific Standard Time	UC Davis	D8XSMGH1
Cartridge : Electrode		Instrument	Run		8/13/2014 7:22:41 AM	(GMT --07:00) Pacific Standard Time	UC Davis	D8XSMGH1