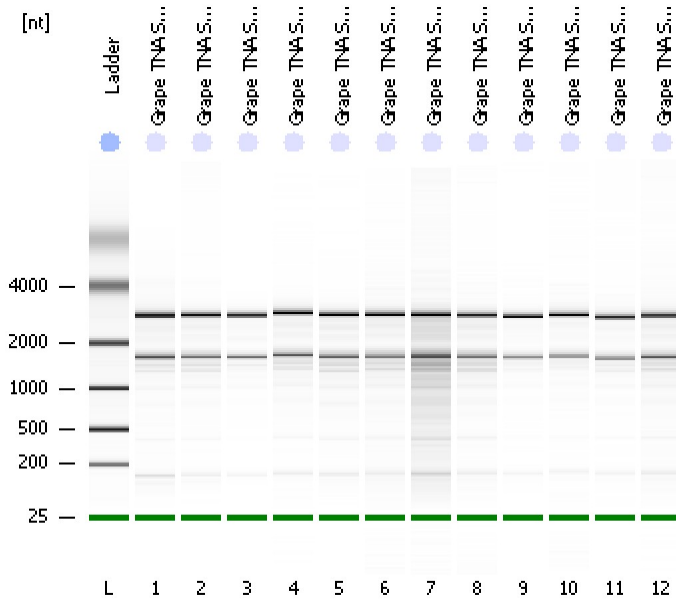


Assay Class: Eukaryote Total RNA Nano
Data Path: C:\... bioanalyzer\2100 expert\Data\2014-08-14\2014-08-14_002.xad

Created: 8/14/2014 10:20:47 AM
Modified: 8/14/2014 10:43:53 AM

Electrophoresis File Run Summary



Instrument Information:

Instrument Name: DE13701086 Firmware: C.01.069
Serial#: DE13701086 Type: G2938B

Assay Information:

Assay Origin Path: C:\Program Files\Agilent\2100 bioanalyzer\2100 expert\assays\RNA\Eukaryote Total RNA Nano Series II.xsy

Assay Class: Eukaryote Total RNA Nano

Version: 2.6

Assay Comments: Total RNA Analysis ng sensitivity (Eukaryote)

© Copyright 2003 - 2009 Agilent Technologies, Inc.

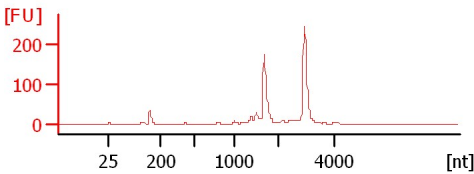
Chip Information:

Chip Lot #:

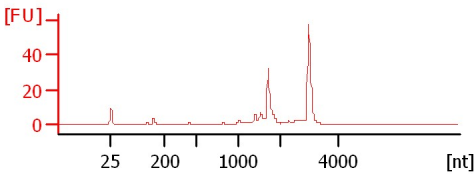
Reagent Kit Lot #:

Chip Comments:

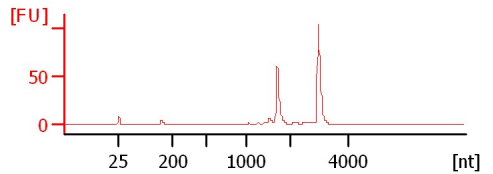
Grape TNA Sample #42
undiluted
RIN: 8.70



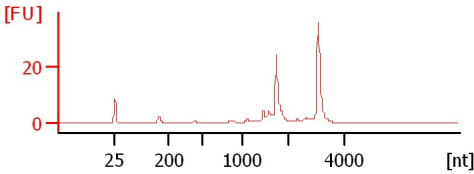
Grape TNA Sample #43
1:10 dil
RIN: 8.50



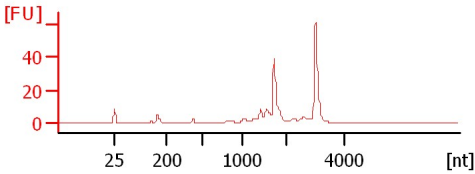
Grape TNA Sample #44
1:10 dil
RIN: 9.40



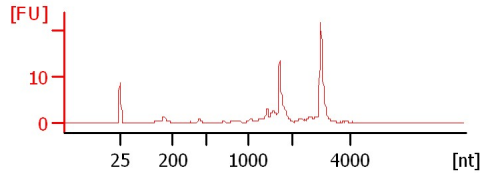
Grape TNA Sample #50
1:10 dil
RIN: 8.50



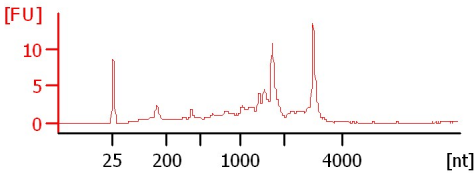
Grape TNA Sample #52
1:10 dil
RIN: 8.10



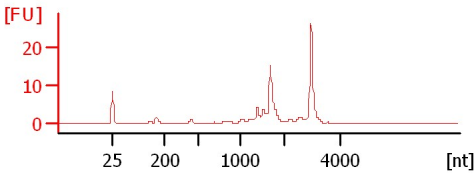
Grape TNA Sample #53
1:10 dil
RIN: 8.30



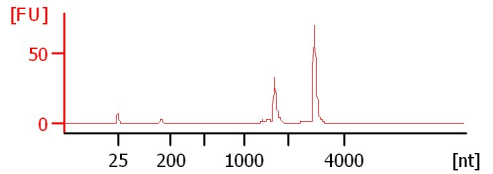
Grape TNA Sample #31
1:10 dil
RIN: 6.80



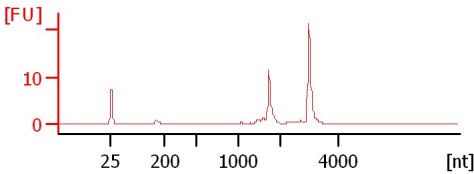
Grape TNA Sample #32
1:10 dil
RIN: 8.20



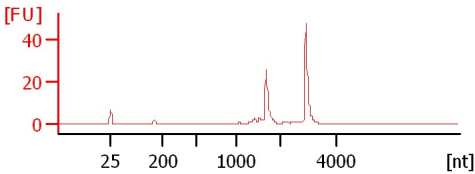
Grape TNA Sample #33
1:10 dil
RIN: 9.40



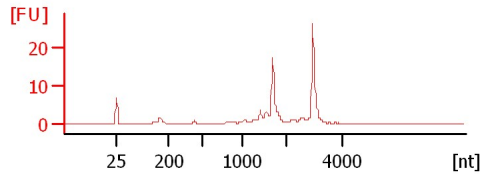
Grape TNA Sample #34
1:10 dil
RIN: 9.40



Grape TNA Sample #35
1:10 dil
RIN: 9



Grape TNA Sample #36
1:10 dil
RIN: 8.30



Assay Class: Eukaryote Total RNA Nano
 Data Path: C:\... bioanalyzer\2100 expert\Data\2014-08-14\2014-08-14_002.xad

Created: 8/14/2014 10:20:47 AM
 Modified: 8/14/2014 10:43:53 AM

Electrophoresis File Run Summary (Chip Summary)

Sample Name	Sample Comment	Status	Result Label	Result Color
Grape TNA Sample #42	undiluted	✓	RIN: 8.70	
Grape TNA Sample #43	1:10 dil	✓	RIN: 8.50	
Grape TNA Sample #44	1:10 dil	✓	RIN: 9.40	
Grape TNA Sample #50	1:10 dil	✓	RIN: 8.50	
Grape TNA Sample #52	1:10 dil	✓	RIN: 8.10	
Grape TNA Sample #53	1:10 dil	✓	RIN: 8.30	
Grape TNA Sample #31	1:10 dil	✓	RIN: 6.80	
Grape TNA Sample #32	1:10 dil	✓	RIN: 8.20	
Grape TNA Sample #33	1:10 dil	✓	RIN: 9.40	
Grape TNA Sample #34	1:10 dil	✓	RIN: 9.40	
Grape TNA Sample #35	1:10 dil	✓	RIN:9	
Grape TNA Sample #36	1:10 dil	✓	RIN: 8.30	
Ladder		✓	All Other Samples	

Chip Lot #

Reagent Kit Lot #

Chip Comments :

Assay Class: Eukaryote Total RNA Nano
Data Path: C:\... bioanalyzer\2100 expert\Data\2014-08-14\2014-08-14_002.xad

Created: 8/14/2014 10:20:47 AM
Modified: 8/14/2014 10:43:53 AM

Electrophoresis Assay Details

General Analysis Settings

Number of Available Sample and Ladder Wells (Max.) : 13
Minimum Visible Range [s] : 17
Maximum Visible Range [s] : 70
Start Analysis Time Range [s] : 19
End Analysis Time Range [s] : 69
Ladder Concentration [ng/μl] : 150
Lower Marker Concentration [ng/μl] : 0
Upper Marker Concentration [ng/μl] : 0
Used Lower Marker for Quantitation
Standard Curve Fit is Logarithmic
Show Data Aligned to Lower Marker

Integrator Settings

Integration Start Time [s] : 19
Integration End Time [s] : 69
Slope Threshold : 0.6
Height Threshold [FU] : 0.5
Area Threshold : 0.2
Width Threshold [s] : 0.5
Baseline Plateau [s] : 6

Filter Settings

Filter Width [s] : 0.5
Polynomial Order : 4

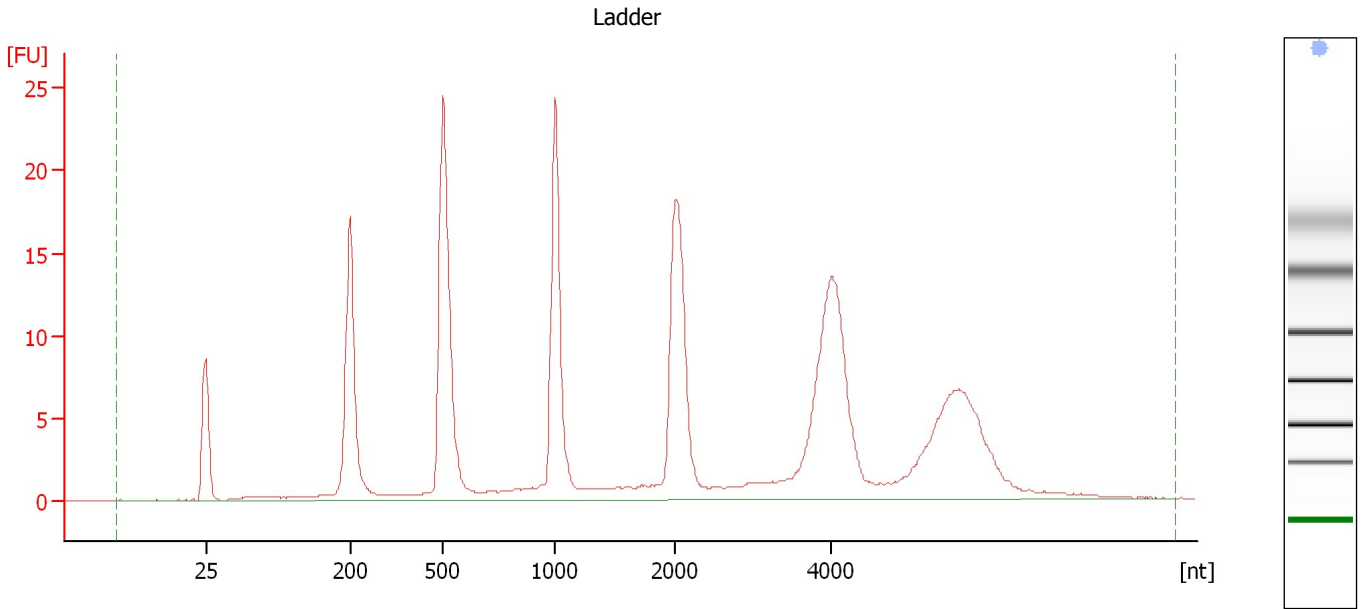
Ladder

Ladder Peak	Size
1	25
2	200
3	500
4	1000
5	2000
6	4000

Assay Class: Eukaryote Total RNA Nano
Data Path: C:\... bioanalyzer\2100 expert\Data\2014-08-14\2014-08-14_002.xad

Created: 8/14/2014 10:20:47 AM
Modified: 8/14/2014 10:43:53 AM

Electropherogram Summary



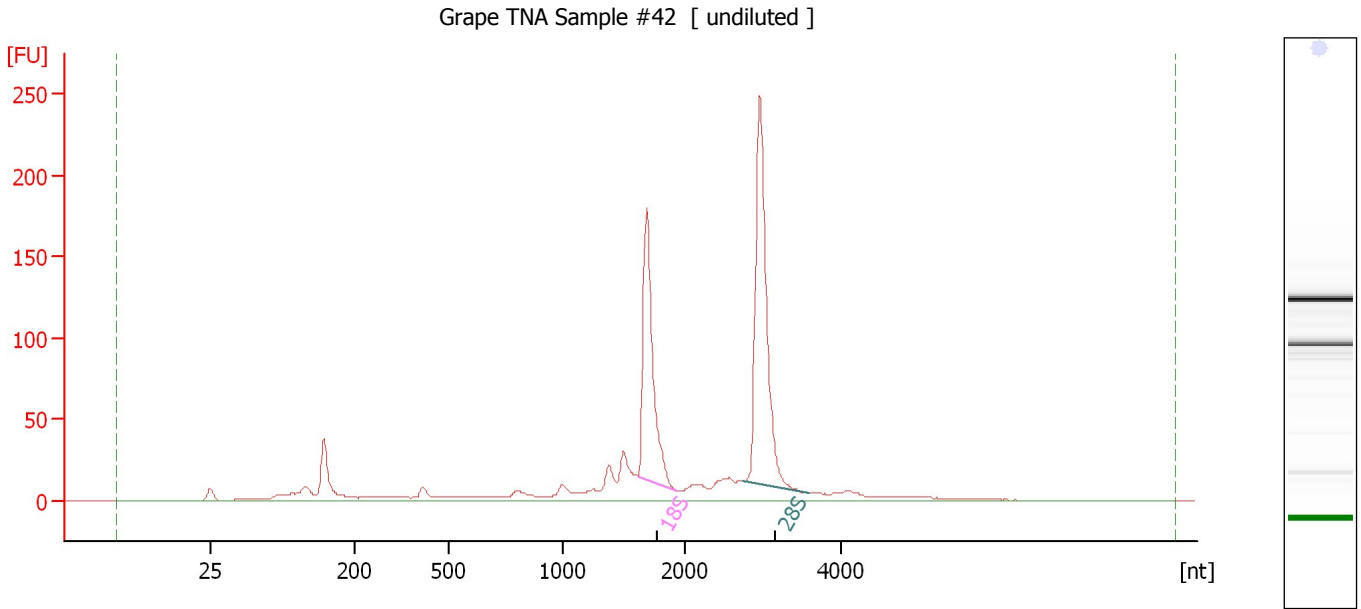
Overall Results for Ladder

RNA Area:	234.0	Result Flagging Color:	
RNA Concentration:	150 ng/μl	Result Flagging Label:	All Other Samples

Assay Class: Eukaryote Total RNA Nano
Data Path: C:\... bioanalyzer\2100 expert\Data\2014-08-14\2014-08-14_002.xad

Created: 8/14/2014 10:20:47 AM
Modified: 8/14/2014 10:43:53 AM

Electropherogram Summary Continued ...



Overall Results for sample 1 : Grape TNA Sample #42

RNA Area:	967.4	RNA Integrity Number (RIN):	8.7 (B.02.08)
RNA Concentration:	620 ng/μl	Result Flagging Color:	
rRNA Ratio [28s / 18s]:	1.5	Result Flagging Label:	RIN: 8.70

Fragment table for sample 1 : Grape TNA Sample #42

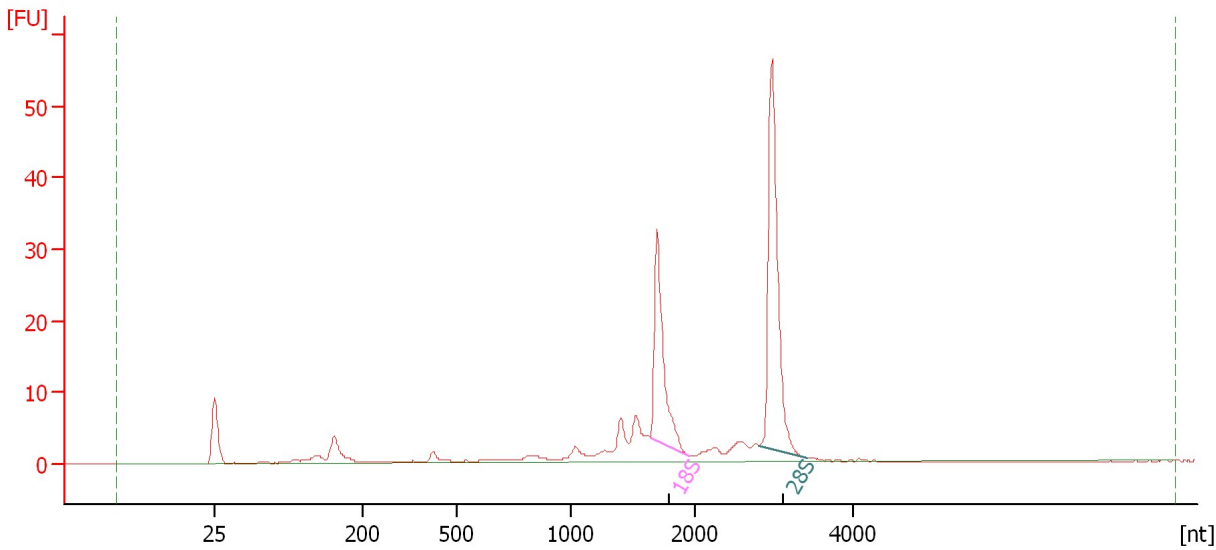
Name	Start Size [nt]	End Size [nt]	Area	% of total Area
18S	1,625	1,941	189.9	19.6
28S	2,750	3,579	284.9	29.4

Assay Class: Eukaryote Total RNA Nano
Data Path: C:\... bioanalyzer\2100 expert\Data\2014-08-14\2014-08-14_002.xad

Created: 8/14/2014 10:20:47 AM
Modified: 8/14/2014 10:43:53 AM

Electropherogram Summary Continued ...

Grape TNA Sample #43 [1:10 dil]



Overall Results for sample 2 : Grape TNA Sample #43

RNA Area: 156.2 RNA Integrity Number (RIN): 8.5 (B.02.08)
RNA Concentration: 100 ng/μl Result Flagging Color:
rRNA Ratio [28s / 18s]: 1.7 Result Flagging Label: RIN: 8.50

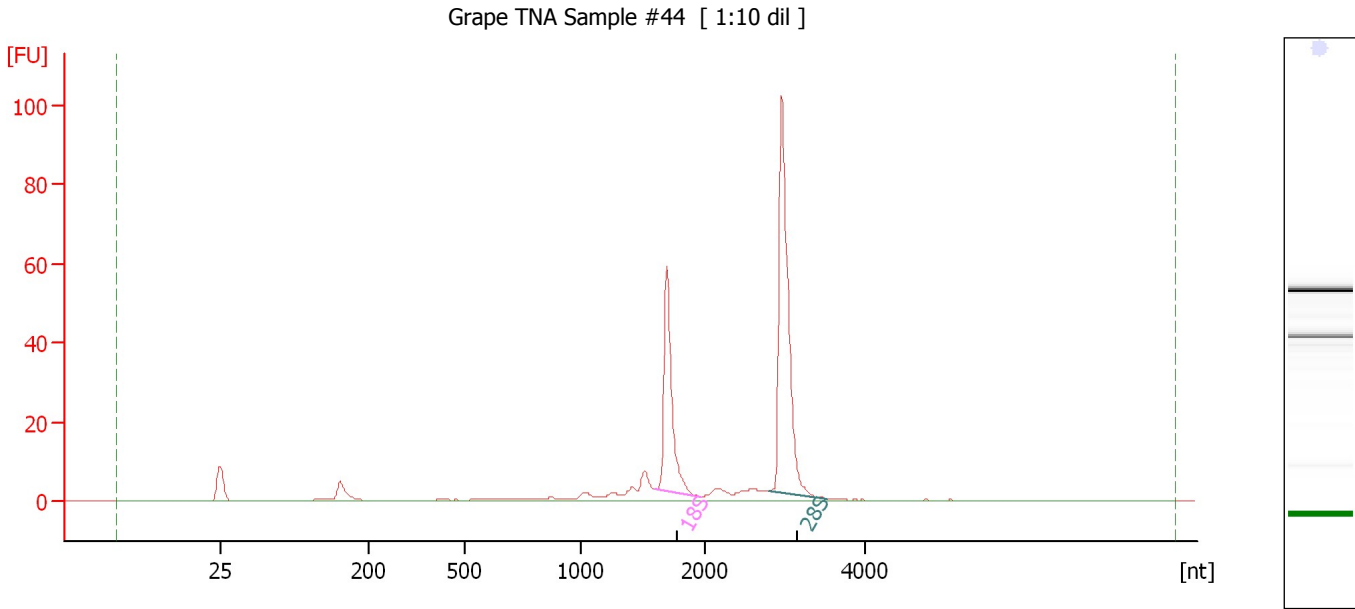
Fragment table for sample 2 : Grape TNA Sample #43

Name	Start Size [nt]	End Size [nt]	Area	% of total Area
18S	1,640	1,962	31.0	19.8
28S	2,801	3,406	52.1	33.4

Assay Class: Eukaryote Total RNA Nano
Data Path: C:\... bioanalyzer\2100 expert\Data\2014-08-14\2014-08-14_002.xad

Created: 8/14/2014 10:20:47 AM
Modified: 8/14/2014 10:43:53 AM

Electropherogram Summary Continued ...



Overall Results for sample 3 : Grape TNA Sample #44

RNA Area:	227.2	RNA Integrity Number (RIN):	9.4 (B.02.08)
RNA Concentration:	146 ng/μl	Result Flagging Color:	
rRNA Ratio [28s / 18s]:	1.8	Result Flagging Label:	RIN: 9.40

Fragment table for sample 3 : Grape TNA Sample #44

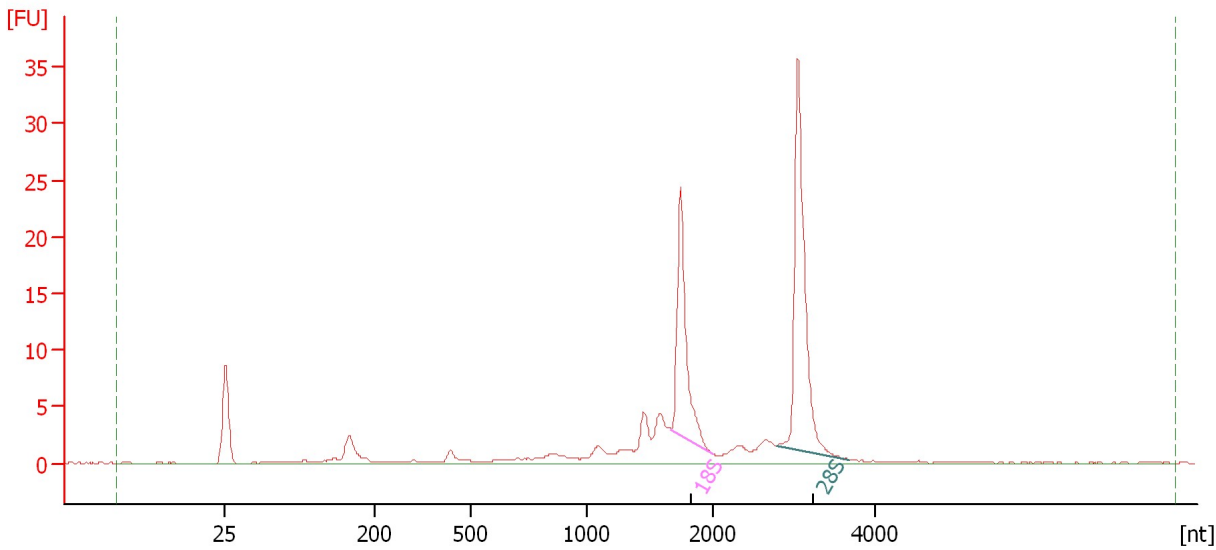
Name	Start Size [nt]	End Size [nt]	Area	% of total Area
18S	1,604	1,965	54.3	23.9
28S	2,811	3,516	97.5	42.9

Assay Class: Eukaryote Total RNA Nano
 Data Path: C:\... bioanalyzer\2100 expert\Data\2014-08-14\2014-08-14_002.xad

Created: 8/14/2014 10:20:47 AM
 Modified: 8/14/2014 10:43:53 AM

Electropherogram Summary Continued ...

Grape TNA Sample #50 [1:10 dil]



Overall Results for sample 4 : Grape TNA Sample #50

RNA Area:	117.6	RNA Integrity Number (RIN):	8.5 (B.02.08)
RNA Concentration:	75 ng/μl	Result Flagging Color:	
rRNA Ratio [28s / 18s]:	1.6	Result Flagging Label:	RIN: 8.50

Fragment table for sample 4 : Grape TNA Sample #50

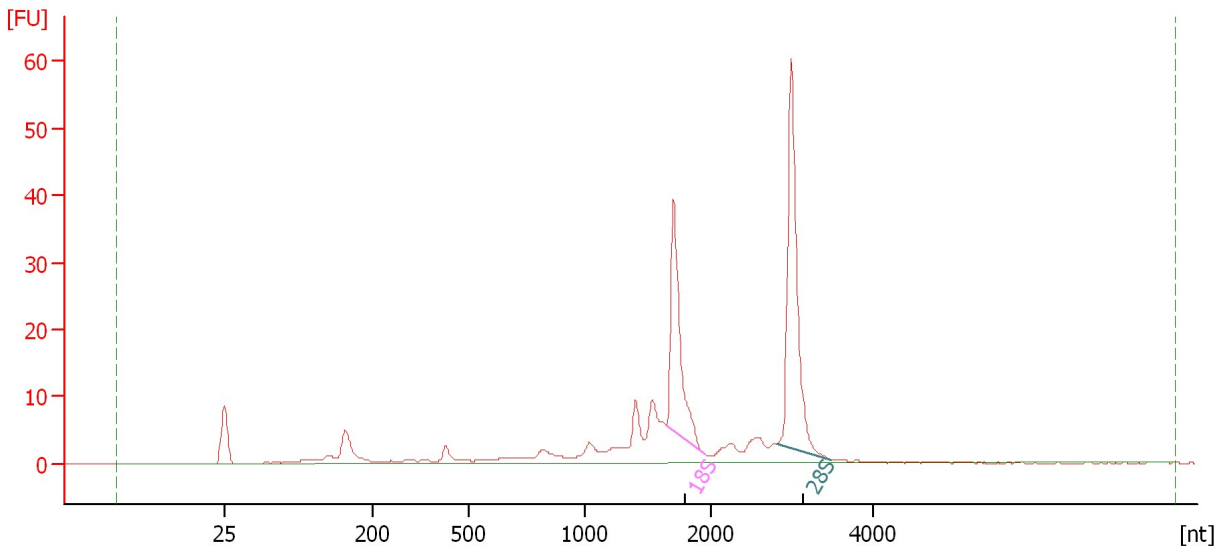
Name	Start Size [nt]	End Size [nt]	Area	% of total Area
18S	1,669	2,003	22.2	18.9
28S	2,781	3,692	36.2	30.8

Assay Class: Eukaryote Total RNA Nano
Data Path: C:\... bioanalyzer\2100 expert\Data\2014-08-14\2014-08-14_002.xad

Created: 8/14/2014 10:20:47 AM
Modified: 8/14/2014 10:43:53 AM

Electropherogram Summary Continued ...

Grape TNA Sample #52 [1:10 dil]



Overall Results for sample 5 : Grape TNA Sample #52

RNA Area:	203.5	RNA Integrity Number (RIN):	8.1 (B.02.08)
RNA Concentration:	130 ng/μl	Result Flagging Color:	
rRNA Ratio [28s / 18s]:	1.5	Result Flagging Label:	RIN: 8.10

Fragment table for sample 5 : Grape TNA Sample #52

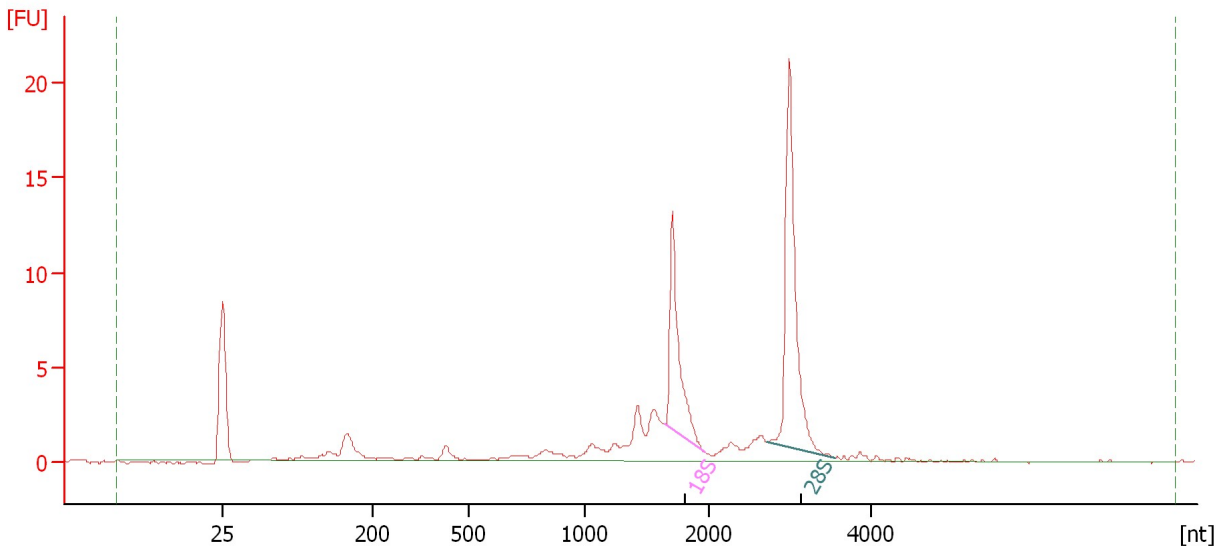
Name	Start Size [nt]	End Size [nt]	Area	% of total Area
18S	1,642	1,958	37.0	18.2
28S	2,809	3,483	56.6	27.8

Assay Class: Eukaryote Total RNA Nano
Data Path: C:\... bioanalyzer\2100 expert\Data\2014-08-14\2014-08-14_002.xad

Created: 8/14/2014 10:20:47 AM
Modified: 8/14/2014 10:43:53 AM

Electropherogram Summary Continued ...

Grape TNA Sample #53 [1:10 dil]



Overall Results for sample 6 : Grape TNA Sample #53

RNA Area:	69.6	RNA Integrity Number (RIN):	8.3 (B.02.08)
RNA Concentration:	45 ng/μl	Result Flagging Color:	
rRNA Ratio [28s / 18s]:	1.7	Result Flagging Label:	RIN: 8.30

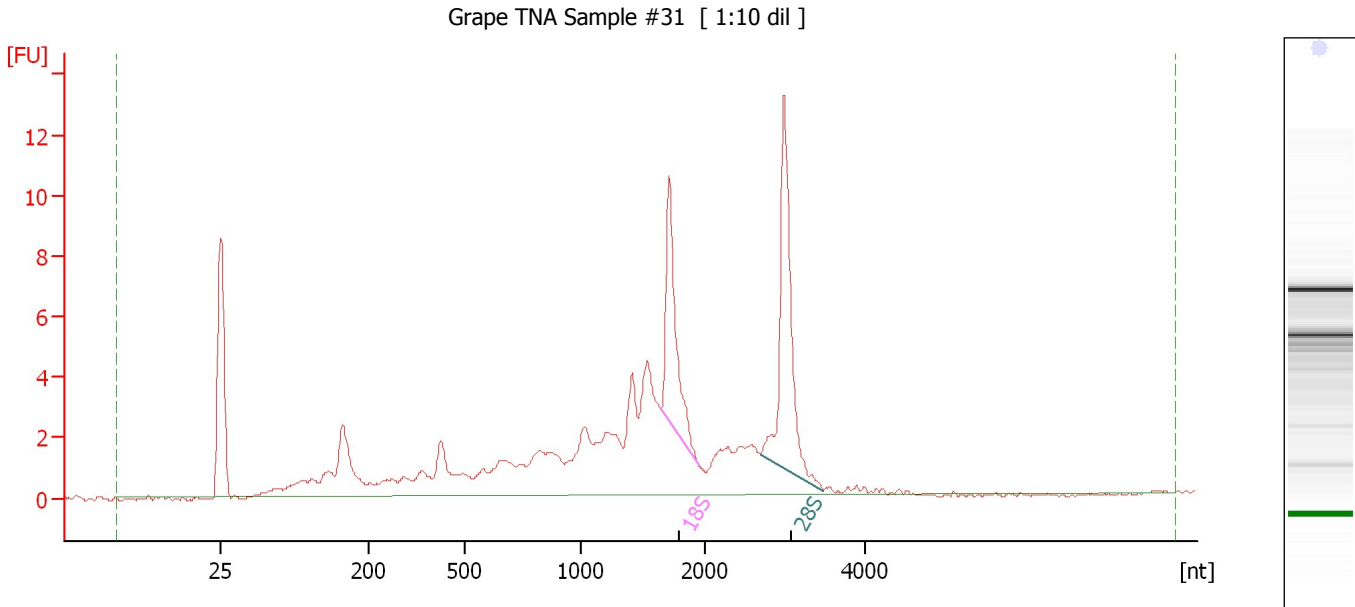
Fragment table for sample 6 : Grape TNA Sample #53

Name	Start Size [nt]	End Size [nt]	Area	% of total Area
18S	1,650	1,966	11.9	17.1
28S	2,730	3,565	20.5	29.5

Assay Class: Eukaryote Total RNA Nano
Data Path: C:\... bioanalyzer\2100 expert\Data\2014-08-14\2014-08-14_002.xad

Created: 8/14/2014 10:20:47 AM
Modified: 8/14/2014 10:43:53 AM

Electropherogram Summary Continued ...



Overall Results for sample 7 : Grape TNA Sample #31

RNA Area:	101.0	RNA Integrity Number (RIN):	6.8 (B.02.08)
RNA Concentration:	65 ng/μl	Result Flagging Color:	
rRNA Ratio [28s / 18s]:	1.4	Result Flagging Label:	RIN: 6.80

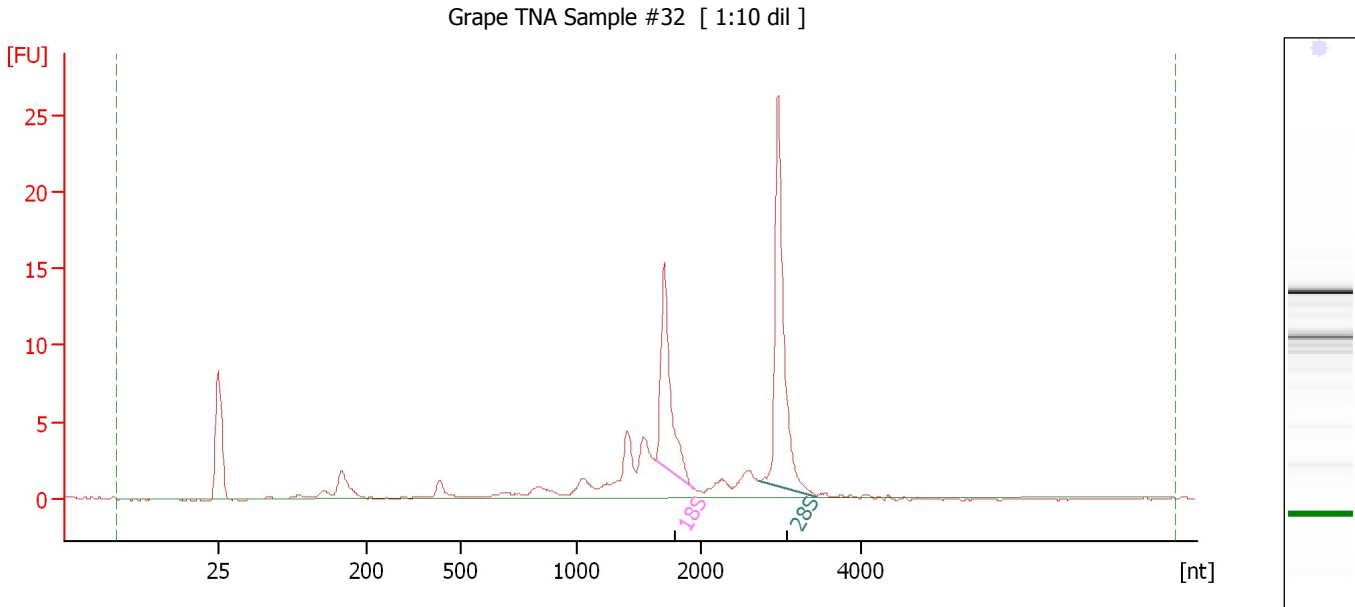
Fragment table for sample 7 : Grape TNA Sample #31

Name	Start Size [nt]	End Size [nt]	Area	% of total Area
18S	1,647	1,948	9.6	9.5
28S	2,691	3,476	13.7	13.6

Assay Class: Eukaryote Total RNA Nano
 Data Path: C:\... bioanalyzer\2100 expert\Data\2014-08-14\2014-08-14_002.xad

Created: 8/14/2014 10:20:47 AM
 Modified: 8/14/2014 10:43:53 AM

Electropherogram Summary Continued ...



Overall Results for sample 8 : Grape TNA Sample #32

RNA Area:	81.0	RNA Integrity Number (RIN):	8.2 (B.02.08)
RNA Concentration:	52 ng/μl	Result Flagging Color:	
rRNA Ratio [28s / 18s]:	1.6	Result Flagging Label:	RIN: 8.20

Fragment table for sample 8 : Grape TNA Sample #32

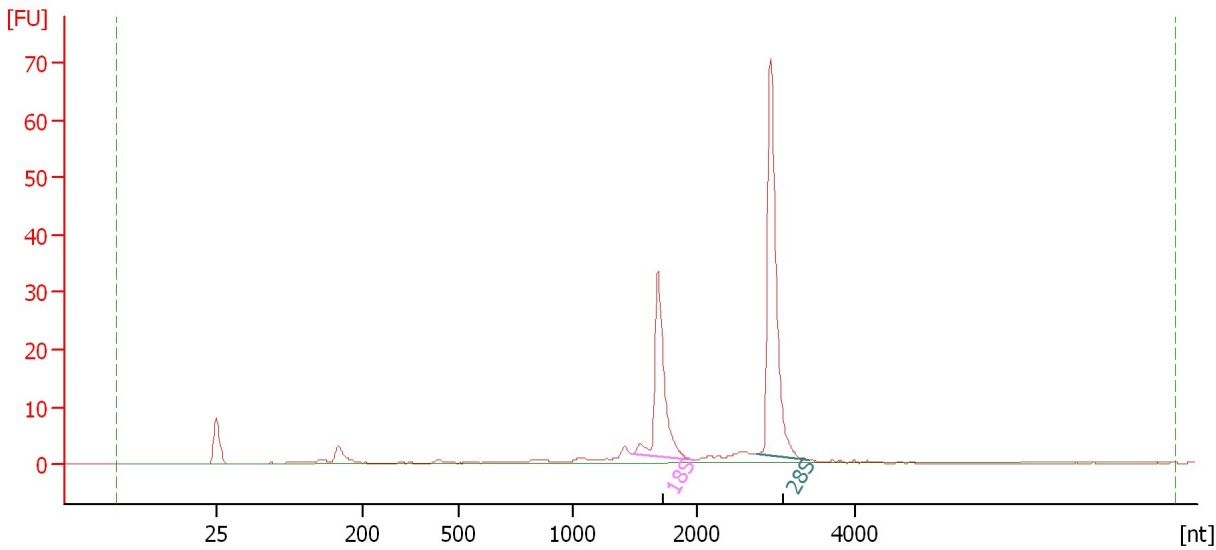
Name	Start Size [nt]	End Size [nt]	Area	% of total Area
18S	1,644	1,946	14.8	18.3
28S	2,732	3,454	24.0	29.7

Assay Class: Eukaryote Total RNA Nano
Data Path: C:\... bioanalyzer\2100 expert\Data\2014-08-14\2014-08-14_002.xad

Created: 8/14/2014 10:20:47 AM
Modified: 8/14/2014 10:43:53 AM

Electropherogram Summary Continued ...

Grape TNA Sample #33 [1:10 dil]



Overall Results for sample 9 : Grape TNA Sample #33

RNA Area: 139.3 RNA Integrity Number (RIN): 9.4 (B.02.08)
RNA Concentration: 89 ng/μl Result Flagging Color:
rRNA Ratio [28s / 18s]: 1.7 Result Flagging Label: RIN: 9.40

Fragment table for sample 9 : Grape TNA Sample #33

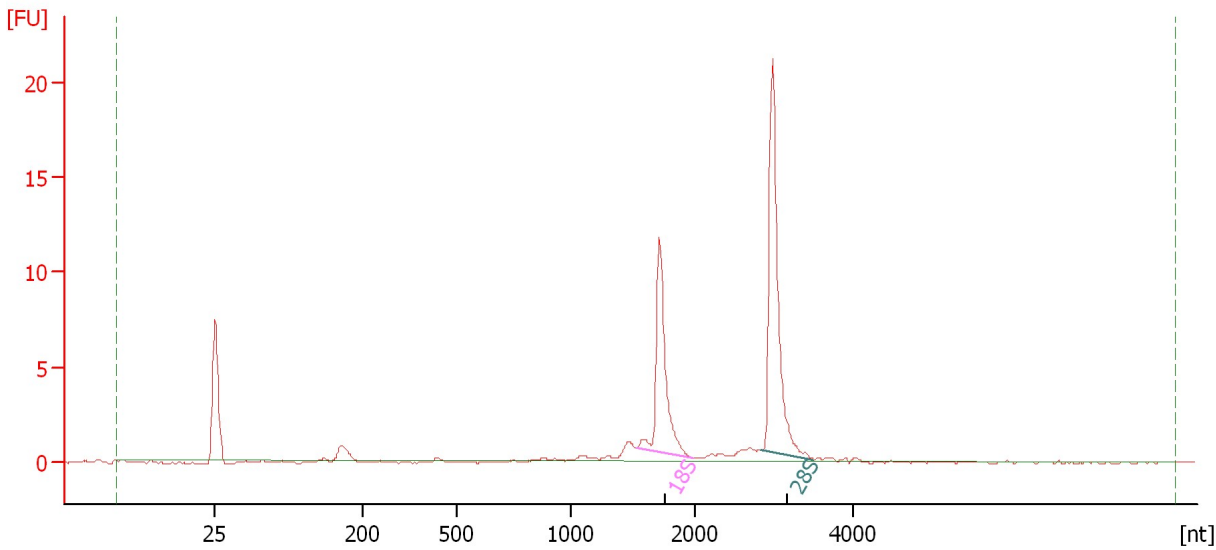
Name	Start Size [nt]	End Size [nt]	Area	% of total Area
18S	1,477	1,980	37.0	26.6
28S	2,760	3,417	62.0	44.5

Assay Class: Eukaryote Total RNA Nano
Data Path: C:\... bioanalyzer\2100 expert\Data\2014-08-14\2014-08-14_002.xad

Created: 8/14/2014 10:20:47 AM
Modified: 8/14/2014 10:43:53 AM

Electropherogram Summary Continued ...

Grape TNA Sample #34 [1:10 dil]



Overall Results for sample 10 : Grape TNA Sample #34

RNA Area: 42.4 RNA Integrity Number (RIN): 9.4 (B.02.08)
RNA Concentration: 27 ng/μl Result Flagging Color:
rRNA Ratio [28s / 18s]: 1.6 Result Flagging Label: RIN: 9.40

Fragment table for sample 10 : Grape TNA Sample #34

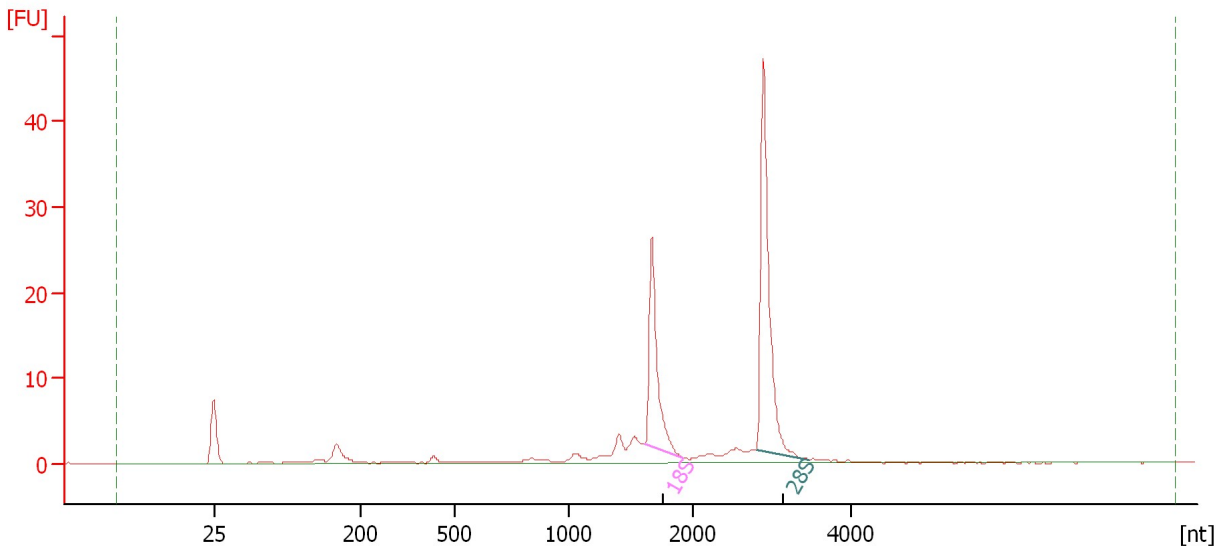
Name	Start Size [nt]	End Size [nt]	Area	% of total Area
18S	1,527	1,988	12.1	28.4
28S	2,841	3,500	18.9	44.6

Assay Class: Eukaryote Total RNA Nano
 Data Path: C:\... bioanalyzer\2100 expert\Data\2014-08-14\2014-08-14_002.xad

Created: 8/14/2014 10:20:47 AM
 Modified: 8/14/2014 10:43:53 AM

Electropherogram Summary Continued ...

Grape TNA Sample #35 [1:10 dil]



Overall Results for sample 11 : Grape TNA Sample #35

RNA Area:	106.5	RNA Integrity Number (RIN):	9 (B.02.08)
RNA Concentration:	68 ng/μl	Result Flagging Color:	
rRNA Ratio [28s / 18s]:	1.7	Result Flagging Label:	RIN:9

Fragment table for sample 11 : Grape TNA Sample #35

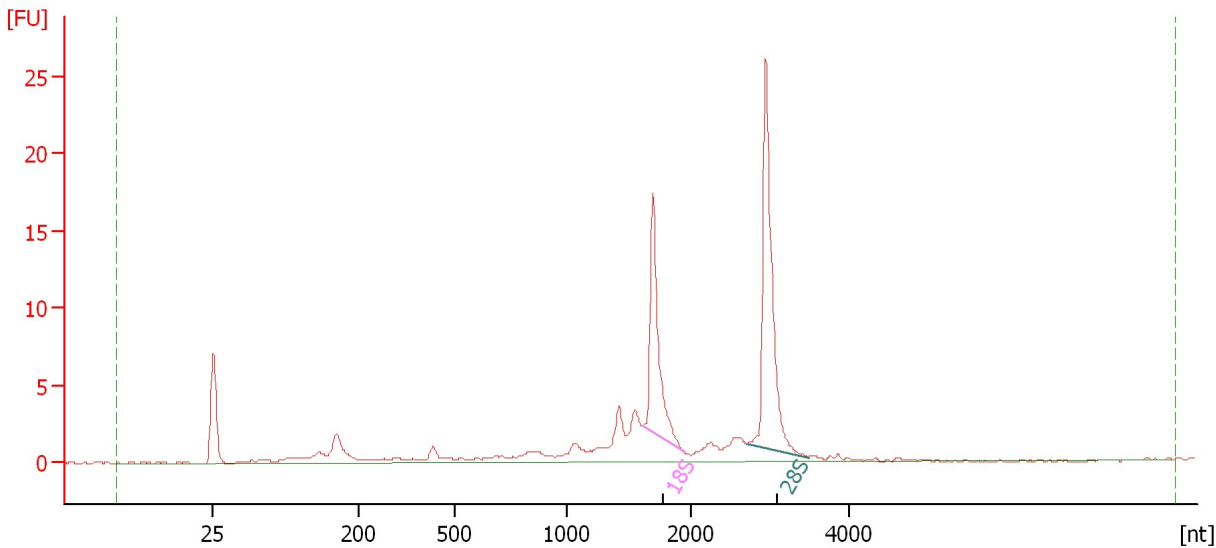
Name	Start Size [nt]	End Size [nt]	Area	% of total Area
18S	1,613	1,926	24.0	22.5
28S	2,802	3,475	41.7	39.2

Assay Class: Eukaryote Total RNA Nano
Data Path: C:\... bioanalyzer\2100 expert\Data\2014-08-14\2014-08-14_002.xad

Created: 8/14/2014 10:20:47 AM
Modified: 8/14/2014 10:43:53 AM

Electropherogram Summary Continued ...

Grape TNA Sample #36 [1:10 dil]



Overall Results for sample 12 : Grape TNA Sample #36

RNA Area: 85.6 RNA Integrity Number (RIN): 8.3 (B.02.08)
RNA Concentration: 55 ng/μl Result Flagging Color:
rRNA Ratio [28s / 18s]: 1.6 Result Flagging Label: RIN: 8.30

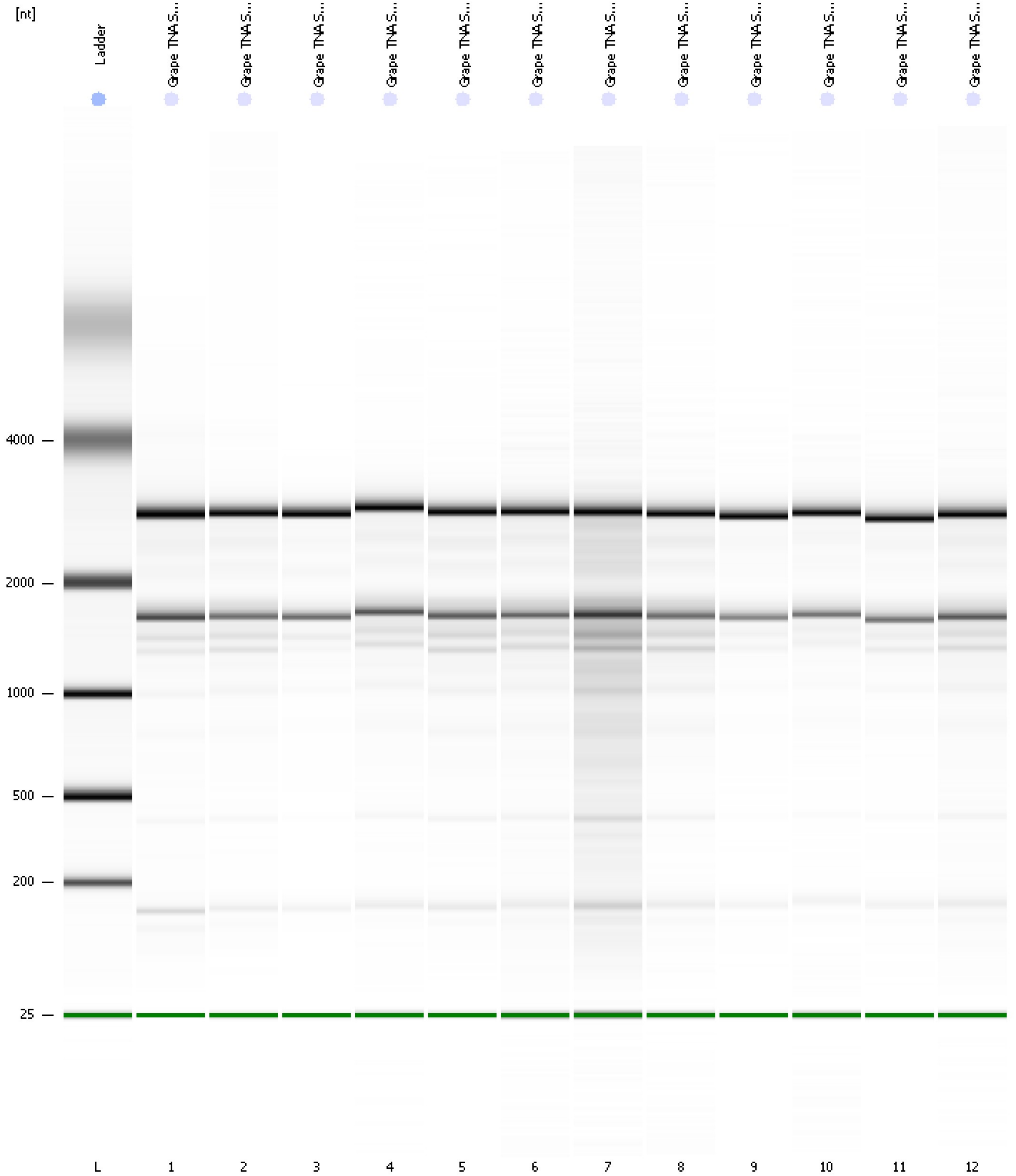
Fragment table for sample 12 : Grape TNA Sample #36

Name	Start Size [nt]	End Size [nt]	Area	% of total Area
18S	1,620	1,951	15.5	18.1
28S	2,708	3,491	24.6	28.8

Assay Class: Eukaryote Total RNA Nano
Data Path: C:\... bioanalyzer\2100 expert\Data\2014-08-14\2014-08-14_002.xad

Created: 8/14/2014 10:20:47 AM
Modified: 8/14/2014 10:43:53 AM

Gel Image



Assay Class: Eukaryote Total RNA Nano
 Data Path: C:\... bioanalyzer\2100 expert\Data\2014-08-14\2014-08-14_002.xad

Created: 8/14/2014 10:20:47 AM
 Modified: 8/14/2014 10:43:53 AM

Run Logbook

Description	Number	Source	Category	Sub Category	Time	Time Zone	User	Host
Run ended on port 1 (Number of wells acquired: 13)		Instrument	Run		8/14/2014 10:43:48 AM	(GMT --07:00) Pacific Standard Time	UC Davis	D8XSMGH1
Run started on port 1 (File: C:\Program Files\Agilent\2100 bioanalyzer\2100 expert\Data\2014-08-14\2014-08-14_002.xad)		Instrument	Run		8/14/2014 10:20:47 AM	(GMT --07:00) Pacific Standard Time	UC Davis	D8XSMGH1
Product Number : G2938B		Instrument	Run		8/14/2014 10:20:47 AM	(GMT --07:00) Pacific Standard Time	UC Davis	D8XSMGH1
Name :		Instrument	Run		8/14/2014 10:20:47 AM	(GMT --07:00) Pacific Standard Time	UC Davis	D8XSMGH1
Vendor : Agilent Technologies		Instrument	Run		8/14/2014 10:20:47 AM	(GMT --07:00) Pacific Standard Time	UC Davis	D8XSMGH1
Serial# : DE13701086		Instrument	Run		8/14/2014 10:20:47 AM	(GMT --07:00) Pacific Standard Time	UC Davis	D8XSMGH1
Firmware : C.01.069		Instrument	Run		8/14/2014 10:20:47 AM	(GMT --07:00) Pacific Standard Time	UC Davis	D8XSMGH1
Cartridge : Electrode		Instrument	Run		8/14/2014 10:20:47 AM	(GMT --07:00) Pacific Standard Time	UC Davis	D8XSMGH1