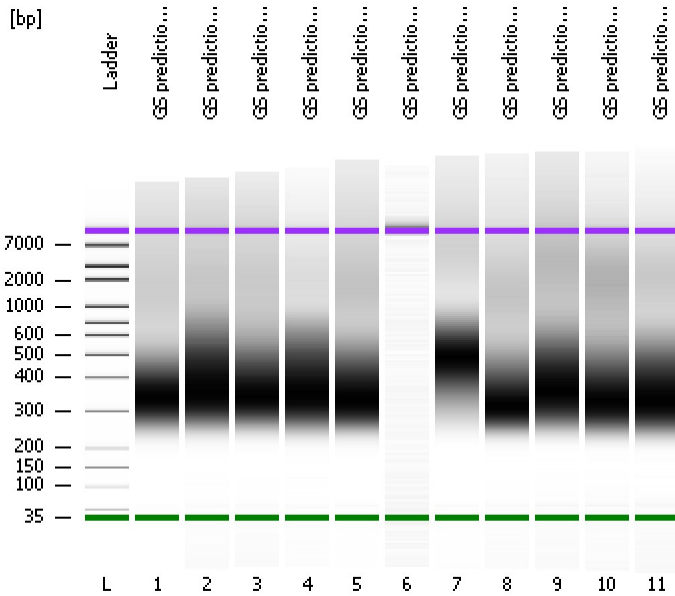


Assay Class: High Sensitivity DNA Assay  
Data Path: C:\... bioanalyzer\2100 expert\Data\2014-08-19\2014-08-19\_001.xad

Created: 8/19/2014 2:59:03 PM  
Modified: 8/19/2014 3:55:35 PM

### Electrophoresis File Run Summary



#### Instrument Information:

Instrument Name: DE13701086      Firmware: C.01.069  
Serial#: DE13701086      Type: G2938B

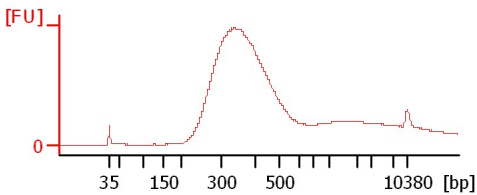
#### Assay Information:

Assay Origin Path: C:\Program Files\Agilent\2100 bioanalyzer\2100 expert\assays\dsDNA\High Sensitivity DNA.xsy  
Assay Class: High Sensitivity DNA Assay  
Version: 1.03  
Assay Comments: Copyright © 2003-2010 Agilent Technologies

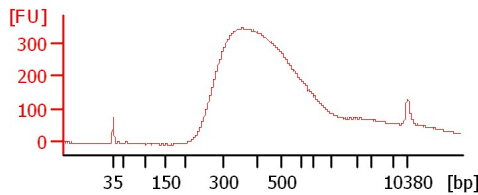
#### Chip Information:

Chip Lot #:      Reagent Kit Lot #:      Chip Comments:

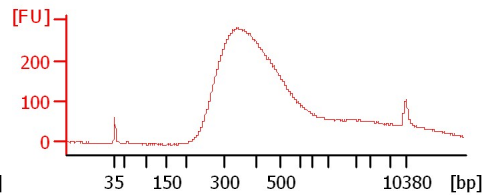
GS prediction A1



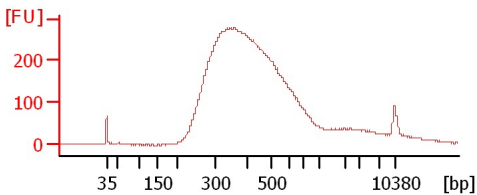
GS prediction B1



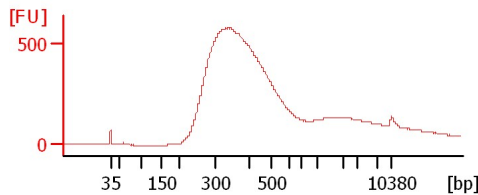
GS prediction C1



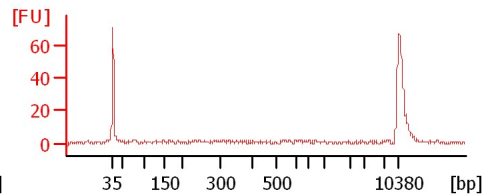
GS prediction D1



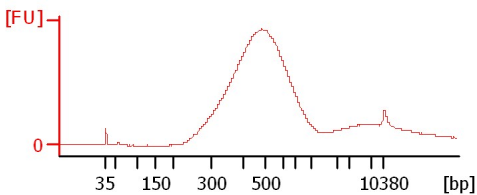
GS prediction E1



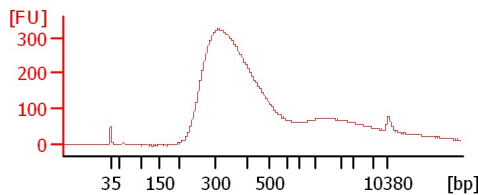
GS prediction F1



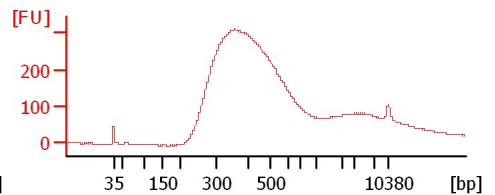
GS prediction G1



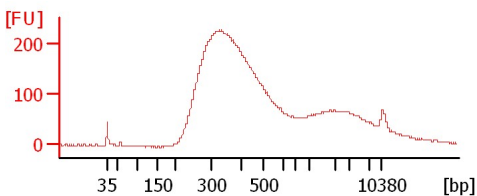
GS prediction H1



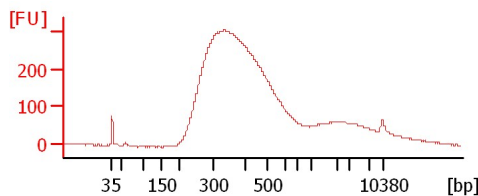
GS prediction A2



GS prediction B2



GS prediction D2



Assay Class: High Sensitivity DNA Assay  
Data Path: C:\... bioanalyzer\2100 expert\Data\2014-08-19\2014-08-19\_001.xad

Created: 8/19/2014 2:59:03 PM  
Modified: 8/19/2014 3:55:35 PM

**Electrophoresis File Run Summary (Chip Summary)**

Sample Name	Sample Comment	Rest. Digest	Status	Observation	Result Label	Result Color
GS prediction A1		<input type="checkbox"/>	✓			
GS prediction B1		<input type="checkbox"/>	✓			
GS prediction C1		<input type="checkbox"/>	✓			
GS prediction D1		<input type="checkbox"/>	✓			
GS prediction E1		<input type="checkbox"/>	✓			
GS prediction F1		<input type="checkbox"/>	✓			
GS prediction G1		<input type="checkbox"/>	✓			
GS prediction H1		<input type="checkbox"/>	✓			
GS prediction A2		<input type="checkbox"/>	✓			
GS prediction B2		<input type="checkbox"/>	✓			
GS prediction D2		<input type="checkbox"/>	✓			
Ladder		<input type="checkbox"/>	✓			

**Chip Lot #**

**Reagent Kit Lot #**

**Chip Comments :**

Assay Class: High Sensitivity DNA Assay  
Data Path: C:\... bioanalyzer\2100 expert\Data\2014-08-19\2014-08-19\_001.xad

Created: 8/19/2014 2:59:03 PM  
Modified: 8/19/2014 3:55:35 PM

**Electrophoresis Assay Details**

**General Analysis Settings**

Number of Available Sample and Ladder Wells (Max.) : 12  
Minimum Visible Range [s] : 32  
Maximum Visible Range [s] : 138  
Start Analysis Time Range [s] : 33  
End Analysis Time Range [s] : 137.5  
Ladder Concentration [pg/μl] : 1950  
Uses Standard Area for Ladder Fragments  
Lower Marker Concentration [pg/μl] : 125  
Upper Marker Concentration [pg/μl] : 75  
Used Upper Marker for Quantitation  
Standard Curve Fit is Point to Point  
Show Data Aligned to Lower and Upper Marker

**Integrator Settings**

Integration Start Time [s] : 33.05  
Integration End Time [s] : 137  
Slope Threshold : 0.8  
Height Threshold [FU] : 5  
Area Threshold : 0.1  
Width Threshold [s] : 0.6  
Baseline Plateau [s] : 0.5

**Filter Settings**

Filter Width [s] : 0.5  
Polynomial Order : 4

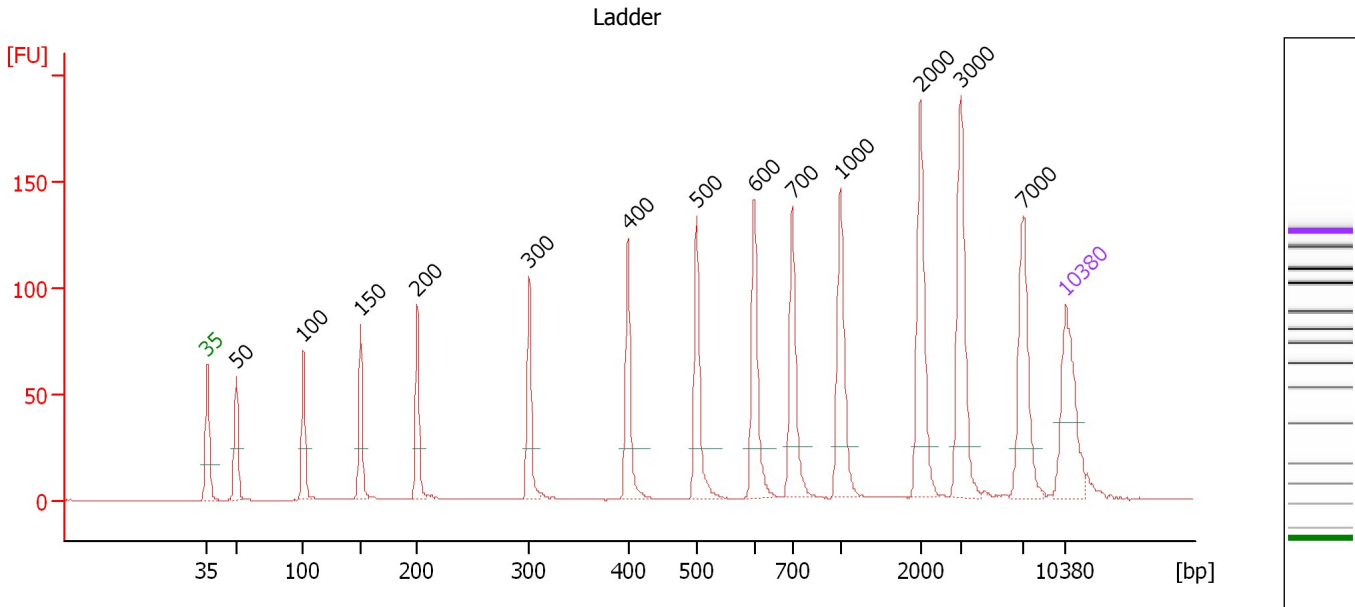
**Ladder**

Ladder Peak	Size	Area
1	35	160
2	50	210
3	100	208
4	150	221
5	200	242
6	300	270
7	400	305
8	500	306
9	600	336
10	700	321
11	1000	366
12	2000	413
13	3000	411
14	7000	400
15	10380	214

Assay Class: High Sensitivity DNA Assay  
 Data Path: C:\... bioanalyzer\2100 expert\Data\2014-08-19\2014-08-19\_001.xad

Created: 8/19/2014 2:59:03 PM  
 Modified: 8/19/2014 3:55:35 PM

**Electropherogram Summary**



**Overall Results for Ladder**

Noise: 0.2

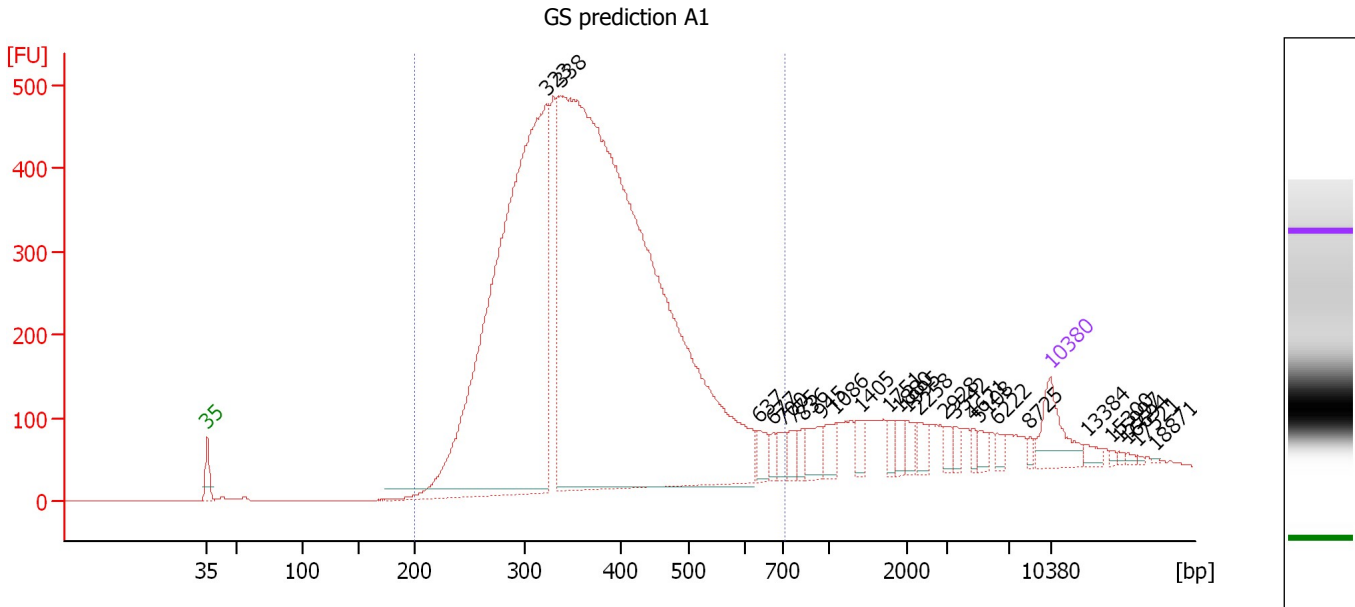
**Peak table for Ladder**

Peak	Size [bp]	Conc. [pg/μl]	Molarity [pmol/l]	Observations
1	35	125.00	5,411.3	Lower Marker
2	50	150.00	4,545.5	Ladder Peak
3	100	150.00	2,272.7	Ladder Peak
4	150	150.00	1,515.2	Ladder Peak
5	200	150.00	1,136.4	Ladder Peak
6	300	150.00	757.6	Ladder Peak
7	400	150.00	568.2	Ladder Peak
8	500	150.00	454.5	Ladder Peak
9	600	150.00	378.8	Ladder Peak
10	700	150.00	324.7	Ladder Peak
11	1,000	150.00	227.3	Ladder Peak
12	2,000	150.00	113.6	Ladder Peak
13	3,000	150.00	75.8	Ladder Peak
14	7,000	150.00	32.5	Ladder Peak
15	10,380	75.00	10.9	Upper Marker

Assay Class: High Sensitivity DNA Assay  
 Data Path: C:\... bioanalyzer\2100 expert\Data\2014-08-19\2014-08-19\_001.xad

Created: 8/19/2014 2:59:03 PM  
 Modified: 8/19/2014 3:55:35 PM

**Electropherogram Summary Continued ...**



**Overall Results for sample 1 : GS prediction A1**

Number of peaks found: 26                      Corr. Area 1: 9,761.7  
 Noise: 0.2

**Peak table for sample 1 : GS prediction A1**

Peak	Size [bp]	Conc. [pg/μl]	Molarity [pmol/l]	Observations
1	35	125.00	5,411.3	Lower Marker
2	323	2,020.92	9,468.6	
3	338	3,552.94	15,915.5	
4	637	38.88	92.5	
5	677	18.86	42.2	
6	700	26.39	57.1	
7	775	26.97	52.7	
8	836	21.04	38.1	
9	945	44.82	71.9	
10	1,086	35.20	49.1	
11	1,405	29.28	31.6	
12	1,751	17.17	14.9	
13	1,880	23.58	19.0	
14	1,995	22.29	16.9	
15	2,258	25.52	17.1	
16	2,928	16.11	8.3	
17	3,542	13.82	5.9	
18	4,621	11.98	3.9	
19	5,108	16.83	5.0	
20	6,222	14.73	3.6	
21	8,725	7.80	1.4	
22	10,380	75.00	10.9	Upper Marker
23	13,384	0.00	0.0	
24	15,300	0.00	0.0	
25	15,997	0.00	0.0	
26	16,694	0.00	0.0	


Assay Class: High Sensitivity DNA Assay  
Data Path: C:\... bioanalyzer\2100 expert\Data\2014-08-19\2014-08-19\_001.xad

Created: 8/19/2014 2:59:03 PM  
Modified: 8/19/2014 3:55:35 PM

**Electropherogram Summary Continued ...****... Peak table for sample 1 : GS prediction A1**

Peak	Size [bp]	Conc. [pg/μl]	Molarity [pmol/l]	Observations
27	17,521	0.00	0.0	
28	18,871	0.00	0.0	

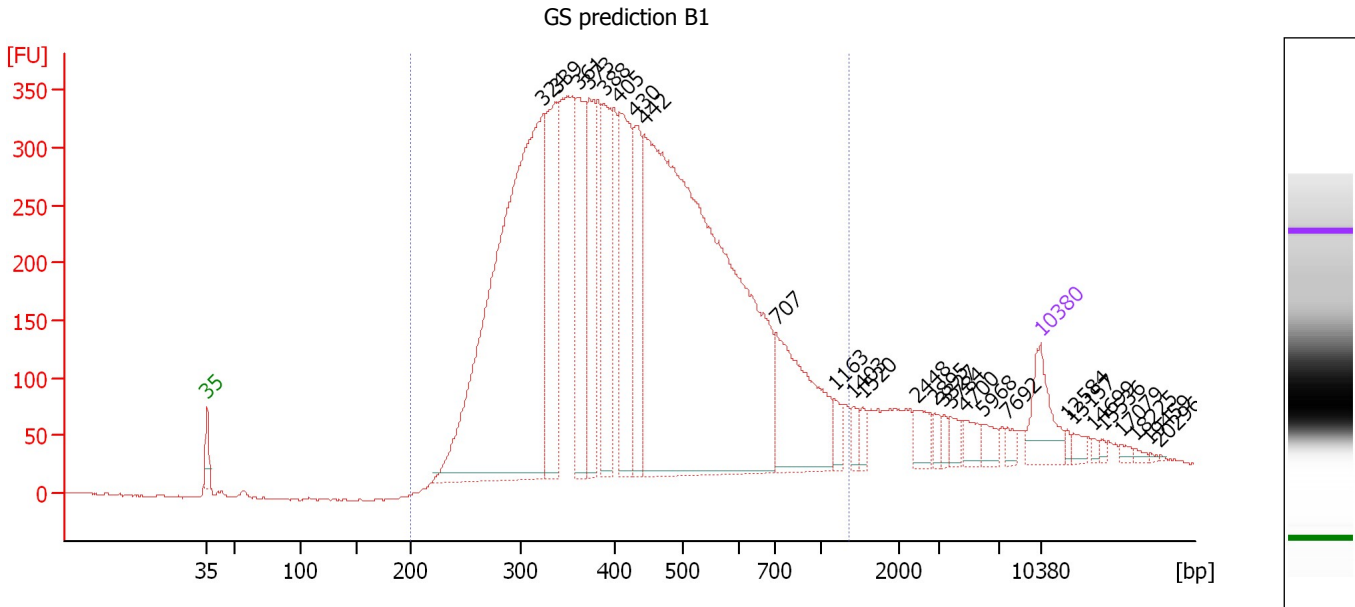
**Region table for sample 1 : GS prediction A1**

From [bp]	To [bp]	Average Size [bp]	Molarity [pmol/l]	Conc. [pg/μl]	Co Corr. lor Area	% of Total	Size distribution in CV [%]
200	713	375	23,617.0	5,452.63	 9,761.7	88	23.7

Assay Class: High Sensitivity DNA Assay  
 Data Path: C:\... bioanalyzer\2100 expert\Data\2014-08-19\2014-08-19\_001.xad

Created: 8/19/2014 2:59:03 PM  
 Modified: 8/19/2014 3:55:35 PM

**Electropherogram Summary Continued ...**



**Overall Results for sample 2 : GS prediction B1**

Number of peaks found: 27                      Corr. Area 1: 9,397.6  
 Noise: 1.0

**Peak table for sample 2 : GS prediction B1**

Peak	Size [bp]	Conc. [pg/μl]	Molarity [pmol/l]	Observations
1	35	125.00	5,411.3	Lower Marker
2	324	1,490.69	6,964.6	
3	339	326.93	1,459.8	
4	361	263.75	1,106.8	
5	373	217.47	884.0	
6	388	243.53	951.6	
7	405	330.14	1,235.6	
8	430	184.27	649.9	
9	442	1,884.19	6,453.7	
10	707	289.11	619.6	
11	1,163	25.98	33.9	
12	1,403	19.79	21.4	
13	1,520	16.72	16.7	
14	2,448	32.98	20.4	
15	2,895	13.91	7.3	
16	3,327	11.64	5.3	
17	3,784	19.34	7.7	
18	4,700	27.14	8.7	
19	5,968	22.56	5.7	
20	7,692	12.79	2.5	
21	10,380	75.00	10.9	Upper Marker
22	12,584	0.00	0.0	
23	13,157	0.00	0.0	
24	14,699	0.00	0.0	
25	15,536	0.00	0.0	
26	17,079	0.00	0.0	


Assay Class: High Sensitivity DNA Assay  
Data Path: C:\... bioanalyzer\2100 expert\Data\2014-08-19\2014-08-19\_001.xad

Created: 8/19/2014 2:59:03 PM  
Modified: 8/19/2014 3:55:35 PM

**Electropherogram Summary Continued ...****... Peak table for sample 2 : GS prediction B1**

Peak	Size [bp]	Conc. [pg/μl]	Molarity [pmol/l]	Observations
27	18,225	0.00	0.0	
28	19,459	0.00	0.0	
29	20,296	0.00	0.0	

**Region table for sample 2 : GS prediction B1**

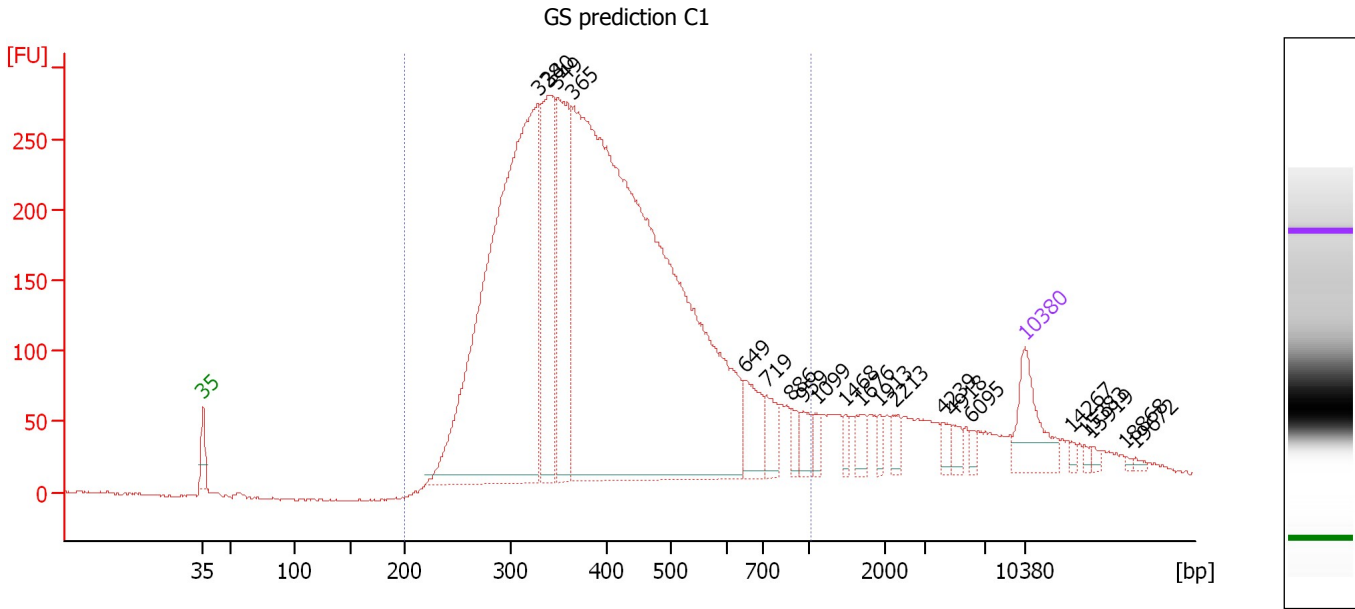
From [bp]	To [bp]	Average Size [bp]	Molarity [pmol/l]	Conc. [pg/μl]	Co Corr. lor Area	% of Total	Size distribution in CV [%]
200	1,345	453	23,139.3	5,950.25	 9,397.6	92	38.7



Assay Class: High Sensitivity DNA Assay  
 Data Path: C:\... bioanalyzer\2100 expert\Data\2014-08-19\2014-08-19\_001.xad

Created: 8/19/2014 2:59:03 PM  
 Modified: 8/19/2014 3:55:35 PM

**Electropherogram Summary Continued ...**



**Overall Results for sample 3 : GS prediction C1**

Number of peaks found: 21                      Corr. Area 1: 6,601.4  
 Noise: 0.9

**Peak table for sample 3 : GS prediction C1**

Peak	Size [bp]	Conc. [pg/μl]	Molarity [pmol/l]	Observations
1	35	125.00	5,411.3	Lower Marker
2	328	1,322.65	6,110.7	
3	340	336.67	1,501.2	
4	349	326.10	1,416.4	
5	365	2,253.45	9,349.1	
6	649	79.11	184.7	
7	719	44.01	92.8	
8	886	23.94	40.9	
9	959	28.06	44.3	
10	1,099	19.47	26.9	
11	1,468	13.27	13.7	
12	1,676	25.63	23.2	
13	1,913	12.25	9.7	
14	2,213	18.16	12.4	
15	4,239	14.26	5.1	
16	4,918	16.93	5.2	
17	6,095	9.53	2.4	
18	10,380	75.00	10.9	Upper Marker
19	14,267	0.00	0.0	
20	15,383	0.00	0.0	
21	15,919	0.00	0.0	
22	18,868	0.00	0.0	
23	19,672	0.00	0.0	

Assay Class: High Sensitivity DNA Assay  
Data Path: C:\... bioanalyzer\2100 expert\Data\2014-08-19\2014-08-19\_001.xad

Created: 8/19/2014 2:59:03 PM  
Modified: 8/19/2014 3:55:35 PM

**Electropherogram Summary Continued ...**

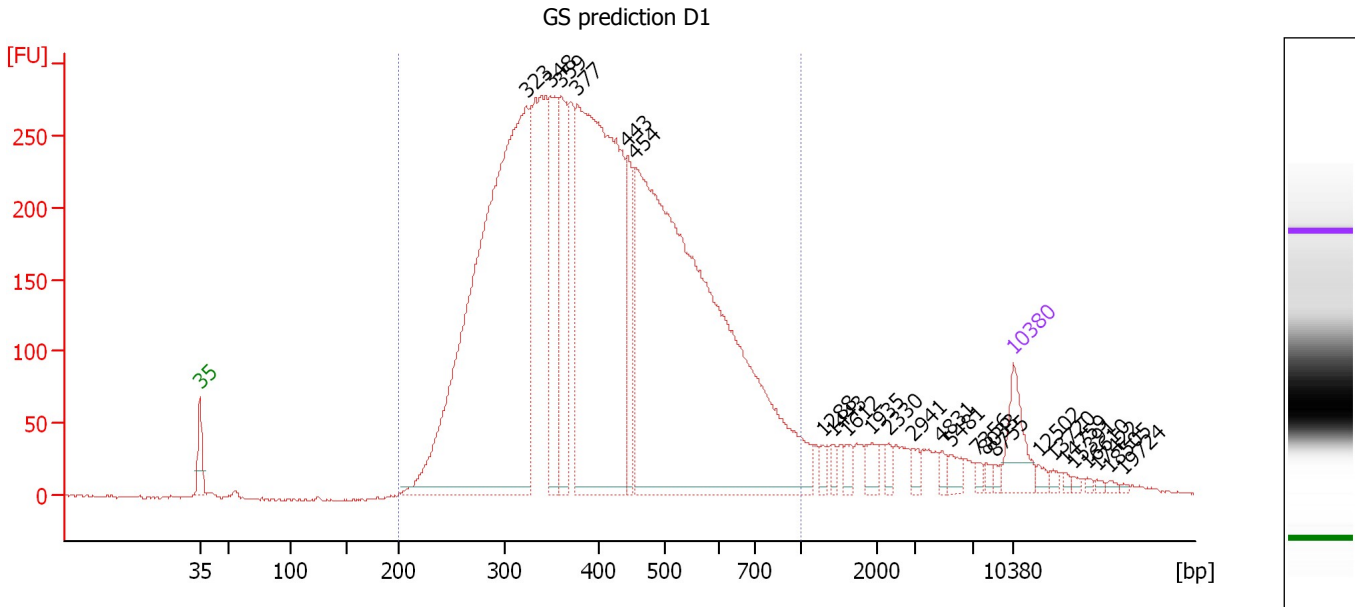
... Region table for sample 3 : GS prediction C1

From [bp]	To [bp]	Average Size [bp]	Molarity [pmol/l]	Conc. [pg/ $\mu$ l]	Co Corr. lor Area	% of Total	Size distribution in CV [%]
200	1,029	417	17,908.5	4,398.07	 6,601.4	89	32.6

Assay Class: High Sensitivity DNA Assay  
 Data Path: C:\... bioanalyzer\2100 expert\Data\2014-08-19\2014-08-19\_001.xad

Created: 8/19/2014 2:59:03 PM  
 Modified: 8/19/2014 3:55:35 PM

**Electropherogram Summary Continued ...**



**Overall Results for sample 4 : GS prediction D1**

Number of peaks found: 25                      Corr. Area 1: 7,589.5  
 Noise: 1.0

**Peak table for sample 4 : GS prediction D1**

Peak	Size [bp]	Conc. [pg/μl]	Molarity [pmol/l]	Observations
1	35	125.00	5,411.3	Lower Marker
2	323	1,941.75	9,121.3	
3	348	268.53	1,170.3	
4	359	290.50	1,225.9	
5	377	1,293.45	5,202.1	
6	443	159.08	544.5	
7	454	2,044.27	6,820.4	
8	1,288	15.24	17.9	
9	1,443	15.01	15.8	
10	1,612	19.65	18.5	
11	1,935	22.90	17.9	
12	2,330	14.43	9.4	
13	2,941	14.54	7.5	
14	4,831	11.63	3.6	
15	5,481	21.78	6.0	
16	7,356	8.68	1.8	
17	8,033	9.01	1.7	
18	8,755	7.13	1.2	
19	10,380	75.00	10.9	Upper Marker
20	12,502	0.00	0.0	
21	13,720	0.00	0.0	
22	14,759	0.00	0.0	
23	15,391	0.00	0.0	
24	16,610	0.00	0.0	
25	17,422	0.00	0.0	
26	18,505	0.00	0.0	


Assay Class: High Sensitivity DNA Assay  
Data Path: C:\... bioanalyzer\2100 expert\Data\2014-08-19\2014-08-19\_001.xad

Created: 8/19/2014 2:59:03 PM  
Modified: 8/19/2014 3:55:35 PM

**Electropherogram Summary Continued ...****... Peak table for sample 4 : GS prediction D1**

Peak	Size [bp]	Conc. [pg/μl]	Molarity [pmol/l]	Observations
27	19,724	0.00	0.0	

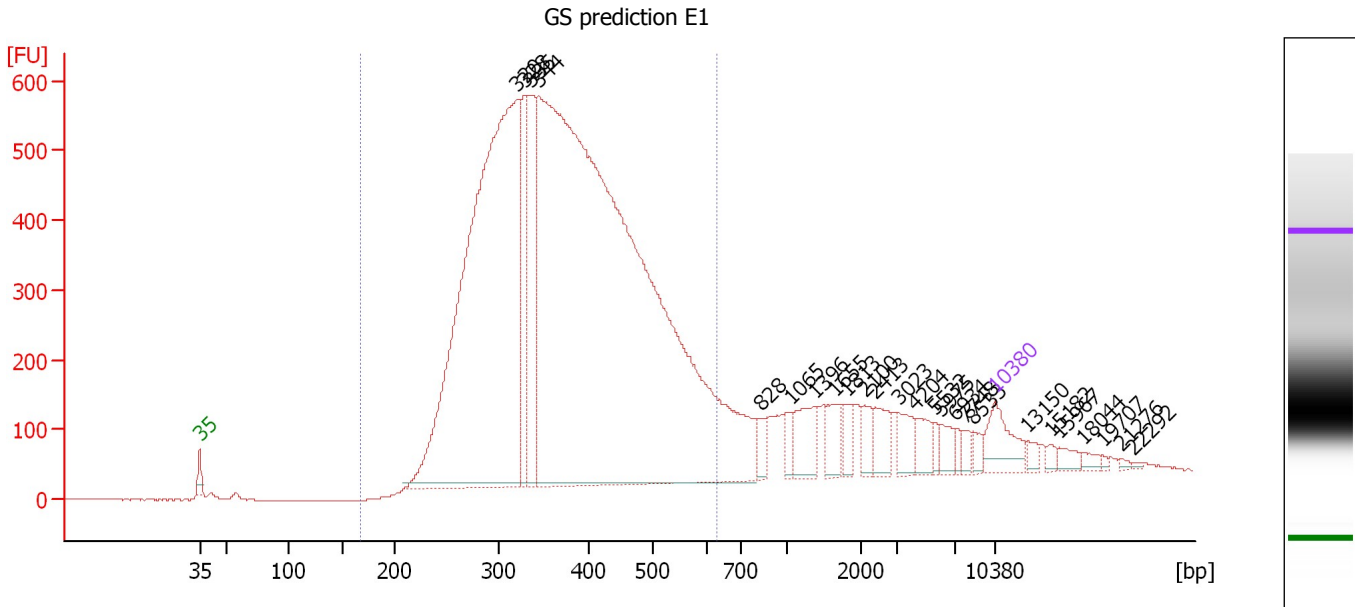
**Region table for sample 4 : GS prediction D1**

From [bp]	To [bp]	Average Size [bp]	Molarity [pmol/l]	Conc. [pg/μl]	Co Corr. lor Area	% of Total	Size distribution in CV [%]
200	1,000	423	26,670.2	6,591.63	 7,589.5	92	32.0

Assay Class: High Sensitivity DNA Assay  
 Data Path: C:\... bioanalyzer\2100 expert\Data\2014-08-19\2014-08-19\_001.xad

Created: 8/19/2014 2:59:03 PM  
 Modified: 8/19/2014 3:55:35 PM

**Electropherogram Summary Continued ...**



**Overall Results for sample 5 : GS prediction E1**

Number of peaks found: 25                      Corr. Area 1: 12,867.3  
 Noise: 0.9

**Peak table for sample 5 : GS prediction E1**

Peak	Size [bp]	Conc. [pg/μl]	Molarity [pmol/l]	Observations
1	35	125.00	5,411.3	Lower Marker
2	320	2,138.71	10,126.3	
3	328	261.80	1,208.7	
4	335	313.59	1,420.1	
5	344	4,125.43	18,174.6	
6	828	35.83	65.6	
7	1,065	30.77	43.8	
8	1,396	78.79	85.5	
9	1,655	49.97	45.7	
10	1,813	29.35	24.5	
11	2,100	35.27	25.4	
12	2,413	48.47	30.4	
13	3,023	41.68	20.9	
14	4,204	40.53	14.6	
15	5,532	14.88	4.1	
16	5,975	28.49	7.2	
17	6,934	13.83	3.0	
18	7,748	16.67	3.3	
19	8,533	15.19	2.7	
20	10,380	75.00	10.9	Upper Marker
21	13,150	0.00	0.0	
22	15,182	0.00	0.0	
23	15,967	0.00	0.0	
24	18,044	0.00	0.0	
25	19,707	0.00	0.0	
26	21,276	0.00	0.0	

Assay Class: High Sensitivity DNA Assay  
Data Path: C:\... bioanalyzer\2100 expert\Data\2014-08-19\2014-08-19\_001.xad

Created: 8/19/2014 2:59:03 PM  
Modified: 8/19/2014 3:55:35 PM

**Electropherogram Summary Continued ...****... Peak table for sample 5 : GS prediction E1**

Peak	Size [bp]	Conc. [pg/μl]	Molarity [pmol/l]	Observations
27	22,292	0.00	0.0	

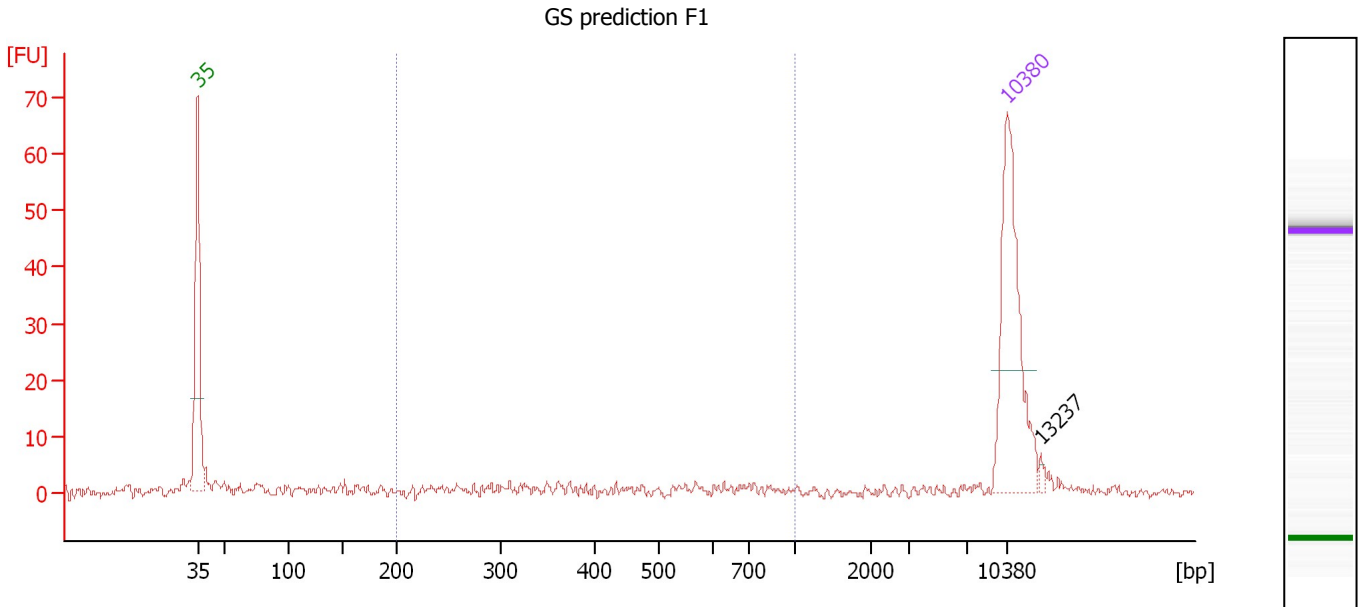
**Region table for sample 5 : GS prediction E1**

From [bp]	To [bp]	Average Size [bp]	Molarity [pmol/l]	Conc. [pg/μl]	Co Corr. lor Area	% of Total	Size distribution in CV [%]
168	629	379	27,136.9	6,299.38	 12,867.3	84	23.4

Assay Class: High Sensitivity DNA Assay  
 Data Path: C:\... bioanalyzer\2100 expert\Data\2014-08-19\2014-08-19\_001.xad

Created: 8/19/2014 2:59:03 PM  
 Modified: 8/19/2014 3:55:35 PM

**Electropherogram Summary Continued ...**



**Overall Results for sample 6 : GS prediction F1**

Number of peaks found: 1                      Corr. Area 1: 52.6  
 Noise: 0.9

**Peak table for sample 6 : GS prediction F1**

Peak	Size [bp]	Conc. [pg/μl]	Molarity [pmol/l]	Observations
1	35	125.00	5,411.3	Lower Marker
2	10,380	75.00	10.9	Upper Marker
3	13,237	0.00	0.0	

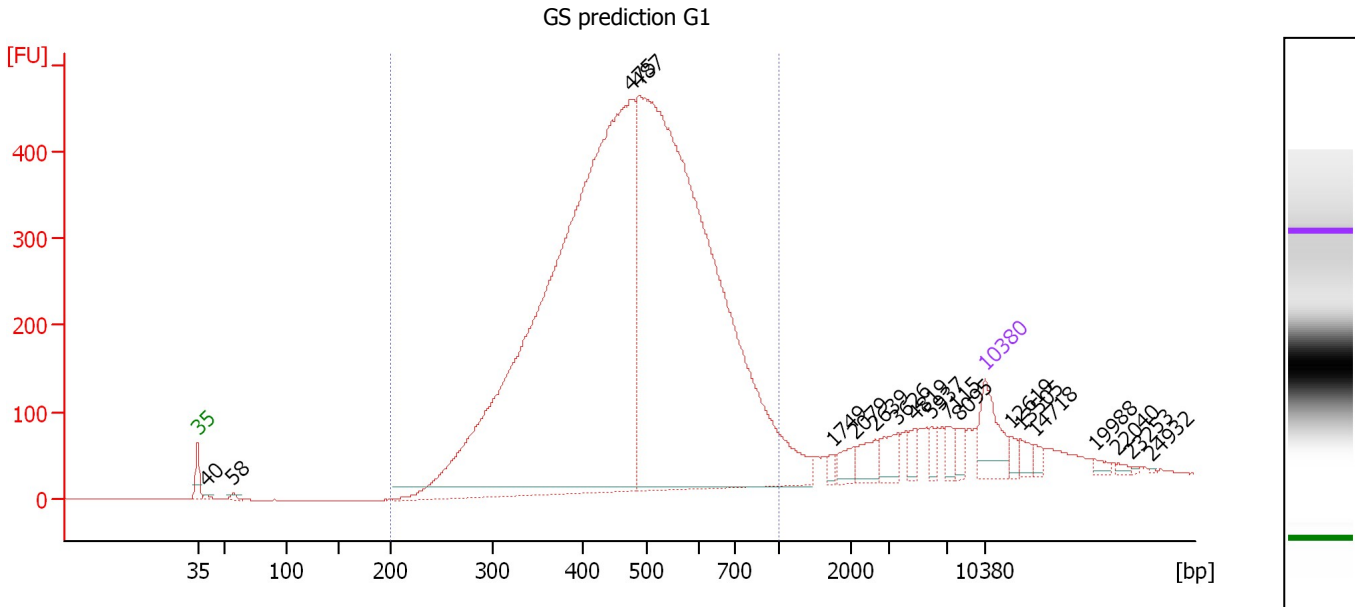
**Region table for sample 6 : GS prediction F1**

From [bp]	To [bp]	Average Size [bp]	Molarity [pmol/l]	Conc. [pg/μl]	Co Corr. lor Area	% of Total	Size distribution in CV [%]
200	1,000	432	240.6	54.81	52.6	32	42.3

Assay Class: High Sensitivity DNA Assay  
 Data Path: C:\... bioanalyzer\2100 expert\Data\2014-08-19\2014-08-19\_001.xad

Created: 8/19/2014 2:59:03 PM  
 Modified: 8/19/2014 3:55:35 PM

**Electropherogram Summary Continued ...**



**Overall Results for sample 7 : GS prediction G1**

Number of peaks found: 19                      Corr. Area 1: 9,207.3  
 Noise: 0.5

**Peak table for sample 7 : GS prediction G1**

Peak	Size [bp]	Conc. [pg/μl]	Molarity [pmol/l]	Observations
1	35	125.00	5,411.3	Lower Marker
2	40	8.43	323.0	
3	58	9.06	238.4	
4	475	2,766.42	8,817.0	
5	487	2,479.60	7,710.9	
6	1,749	12.28	10.6	
7	2,079	26.79	19.5	
8	2,639	36.74	21.1	
9	3,626	39.65	16.6	
10	4,819	19.79	6.2	
11	5,937	16.97	4.3	
12	7,115	24.44	5.2	
13	8,095	18.86	3.5	
14	10,380	75.00	10.9	Upper Marker
15	12,619	0.00	0.0	
16	13,505	0.00	0.0	
17	14,718	0.00	0.0	
18	19,988	0.00	0.0	
19	22,040	0.00	0.0	
20	23,253	0.00	0.0	
21	24,932	0.00	0.0	

**Region table for sample 7 : GS prediction G1**

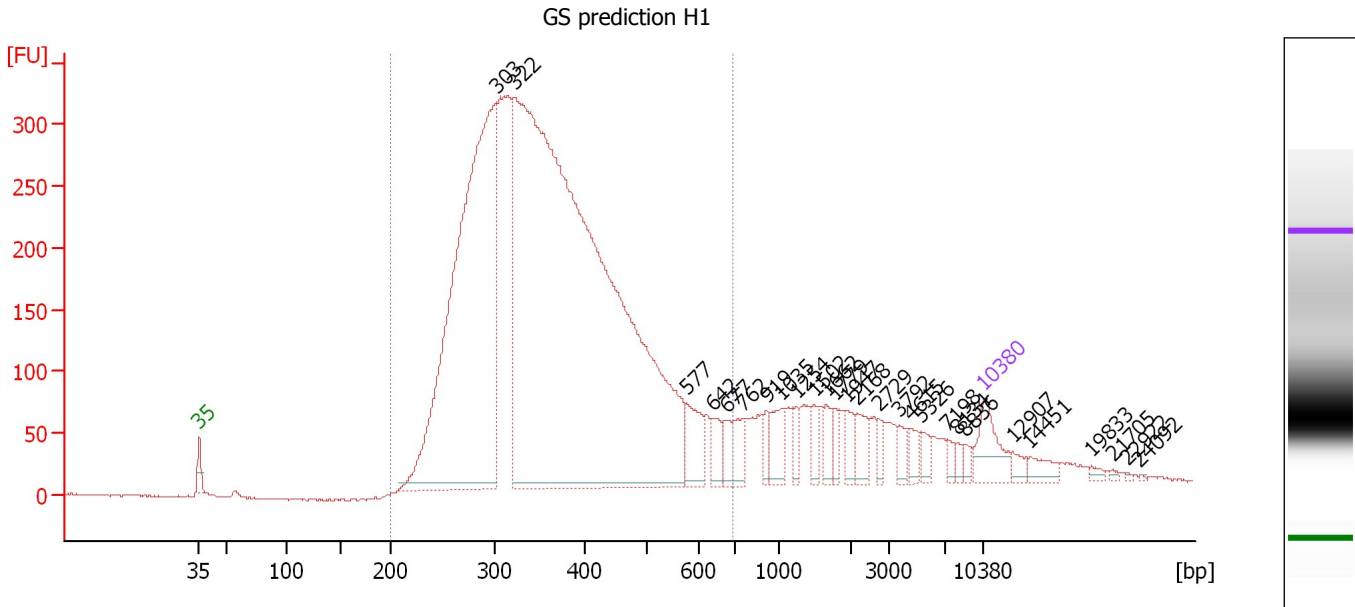
From [bp]	To [bp]	Average Size [bp]	Molarity [pmol/l]	Conc. [pg/μl]	Co Corr. lor Area	% of Total	Size distribution in CV [%]
200	1,000	490	17,238.0	5,065.89	9,207.3	90	26.7



Assay Class: High Sensitivity DNA Assay  
 Data Path: C:\... bioanalyzer\2100 expert\Data\2014-08-19\2014-08-19\_001.xad

Created: 8/19/2014 2:59:03 PM  
 Modified: 8/19/2014 3:55:35 PM

**Electropherogram Summary Continued ...**



**Overall Results for sample 8 : GS prediction H1**

Number of peaks found: 27                      Corr. Area 1: 6,789.0  
 Noise: 0.8

**Peak table for sample 8 : GS prediction H1**

Peak	Size [bp]	Conc. [pg/μl]	Molarity [pmol/l]	Observations
1	35	125.00	5,411.3	Lower Marker
2	303	1,857.40	9,292.8	
3	322	3,943.82	18,537.2	
4	577	96.28	252.9	
5	642	48.69	115.0	
6	677	41.00	91.8	
7	762	55.71	110.7	
8	919	31.50	51.9	
9	1,035	63.57	93.1	
10	1,254	30.43	36.8	
11	1,502	31.63	31.9	
12	1,662	32.14	29.3	
13	1,779	24.89	21.2	
14	1,947	31.88	24.8	
15	2,168	45.02	31.5	
16	2,729	21.43	11.9	
17	3,792	21.42	8.6	
18	4,615	25.06	8.2	
19	5,326	25.49	7.3	
20	7,198	15.37	3.2	
21	8,134	11.41	2.1	
22	8,836	13.96	2.4	
23	10,380	75.00	10.9	Upper Marker
24	12,907	0.00	0.0	
25	14,451	0.00	0.0	
26	19,833	0.00	0.0	

Assay Class: High Sensitivity DNA Assay  
Data Path: C:\... bioanalyzer\2100 expert\Data\2014-08-19\2014-08-19\_001.xad

Created: 8/19/2014 2:59:03 PM  
Modified: 8/19/2014 3:55:35 PM

**Electropherogram Summary Continued ...****... Peak table for sample 8 : GS prediction H1**

Peak	Size [bp]	Conc. [pg/ $\mu$ l]	Molarity [pmol/l]	Observations
27	21,705	0.00	0.0	
28	22,922	0.00	0.0	
29	24,092	0.00	0.0	

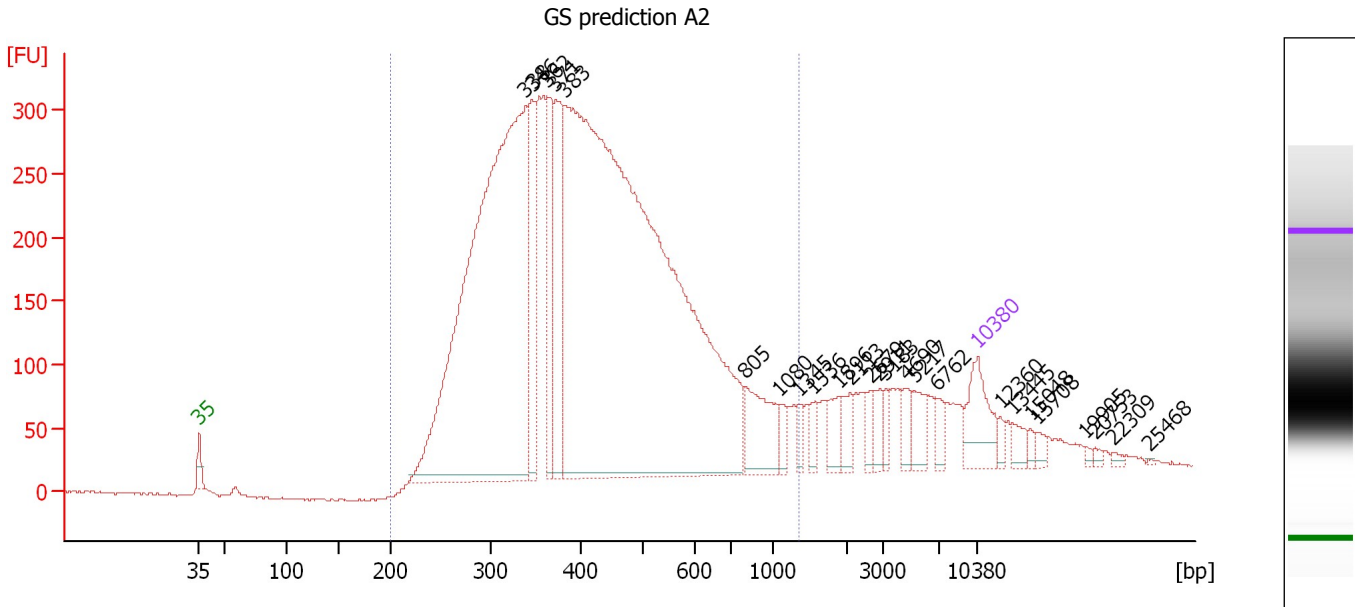
**Region table for sample 8 : GS prediction H1**

From [bp]	To [bp]	Average Size [bp]	Molarity [pmol/l]	Conc. [pg/ $\mu$ l]	Co Corr. lor Area	% of Total	Size distribution in CV [%]
200	698	372	27,535.2	6,229.78	 6,789.0	84	25.8

Assay Class: High Sensitivity DNA Assay  
 Data Path: C:\... bioanalyzer\2100 expert\Data\2014-08-19\2014-08-19\_001.xad

Created: 8/19/2014 2:59:03 PM  
 Modified: 8/19/2014 3:55:35 PM

**Electropherogram Summary Continued ...**



**Overall Results for sample 9 : GS prediction A2**

Number of peaks found: 25                      Corr. Area 1: 7,869.9  
 Noise: 0.8

**Peak table for sample 9 : GS prediction A2**

Peak	Size [bp]	Conc. [pg/μl]	Molarity [pmol/l]	Observations
1	35	125.00	5,411.3	Lower Marker
2	338	1,610.69	7,218.4	
3	346	184.37	807.8	
4	362	166.28	696.1	
5	371	235.60	961.0	
6	383	2,604.17	10,308.5	
7	805	115.77	217.9	
8	1,080	22.73	31.9	
9	1,345	17.60	19.8	
10	1,536	20.08	19.8	
11	1,896	32.81	26.2	
12	2,113	30.70	22.0	
13	2,679	20.61	11.7	
14	2,911	23.62	12.3	
15	3,183	18.10	8.6	
16	4,690	25.95	8.4	
17	5,217	35.12	10.2	
18	6,762	21.15	4.7	
19	10,380	75.00	10.9	Upper Marker
20	12,360	0.00	0.0	
21	13,445	0.00	0.0	
22	15,048	0.00	0.0	
23	15,708	0.00	0.0	
24	19,905	0.00	0.0	
25	20,753	0.00	0.0	
26	22,309	0.00	0.0	


Assay Class: High Sensitivity DNA Assay  
Data Path: C:\... bioanalyzer\2100 expert\Data\2014-08-19\2014-08-19\_001.xad

Created: 8/19/2014 2:59:03 PM  
Modified: 8/19/2014 3:55:35 PM

**Electropherogram Summary Continued ...****... Peak table for sample 9 : GS prediction A2**

Peak	Size [bp]	Conc. [pg/μl]	Molarity [pmol/l]	Observations
27	25,468	0.00	0.0	

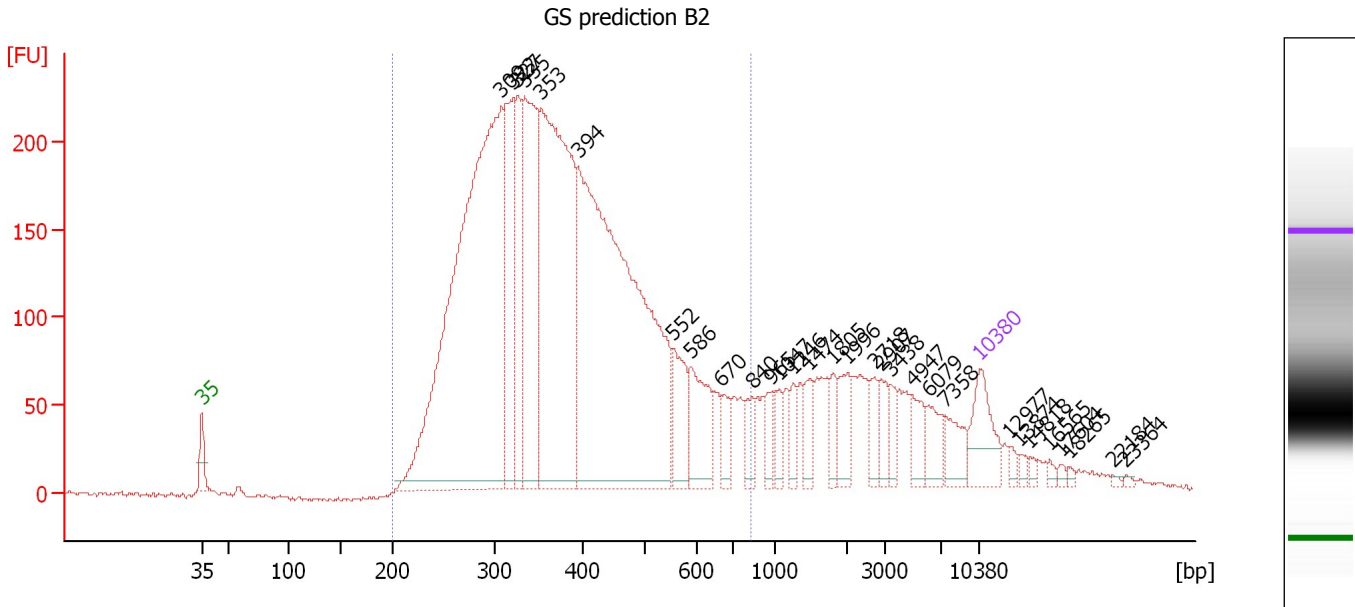
**Region table for sample 9 : GS prediction A2**

From [bp]	To [bp]	Average Size [bp]	Molarity [pmol/l]	Conc. [pg/μl]	Co Corr. lor Area	% of Total	Size distribution in CV [%]
200	1,361	443	20,305.8	5,135.05	 7,869.9	88	39.2

Assay Class: High Sensitivity DNA Assay  
 Data Path: C:\... bioanalyzer\2100 expert\Data\2014-08-19\2014-08-19\_001.xad

Created: 8/19/2014 2:59:03 PM  
 Modified: 8/19/2014 3:55:35 PM

**Electropherogram Summary Continued ...**



**Overall Results for sample 10 : GS prediction B2**

Number of peaks found: 30                      Corr. Area 1: 5,351.3  
 Noise: 1.3

**Peak table for sample 10 : GS prediction B2**

Peak	Size [bp]	Conc. [pg/μl]	Molarity [pmol/l]	Observations
1	35	125.00	5,411.3	Lower Marker
2	309	1,457.58	7,152.7	
3	322	280.66	1,321.1	
4	327	196.27	910.4	
5	335	447.16	2,022.4	
6	353	822.99	3,527.4	
7	394	1,263.95	4,859.8	
8	552	101.32	278.0	
9	586	126.21	326.3	
10	670	38.24	86.4	
11	840	38.57	69.6	
12	965	27.92	43.9	
13	1,047	25.90	37.5	
14	1,246	28.12	34.2	
15	1,474	38.39	39.5	
16	1,805	29.85	25.1	
17	1,996	50.08	38.0	
18	2,718	30.96	17.3	
19	2,907	33.61	17.5	
20	3,438	26.84	11.8	
21	4,947	41.66	12.8	
22	6,079	42.79	10.7	
23	7,358	45.40	9.3	
24	10,380	75.00	10.9	Upper Marker
25	12,977	0.00	0.0	
26	13,874	0.00	0.0	

Assay Class: High Sensitivity DNA Assay  
 Data Path: C:\... bioanalyzer\2100 expert\Data\2014-08-19\2014-08-19\_001.xad

Created: 8/19/2014 2:59:03 PM  
 Modified: 8/19/2014 3:55:35 PM

### Electropherogram Summary Continued ...

#### ... Peak table for sample 10 : GS prediction B2

Peak	Size [bp]	Conc. [pg/μl]	Molarity [pmol/l]	Observations
27	14,818	0.00	0.0	
28	16,565	0.00	0.0	
29	17,604	0.00	0.0	
30	18,265	0.00	0.0	
31	22,184	0.00	0.0	
32	23,364	0.00	0.0	

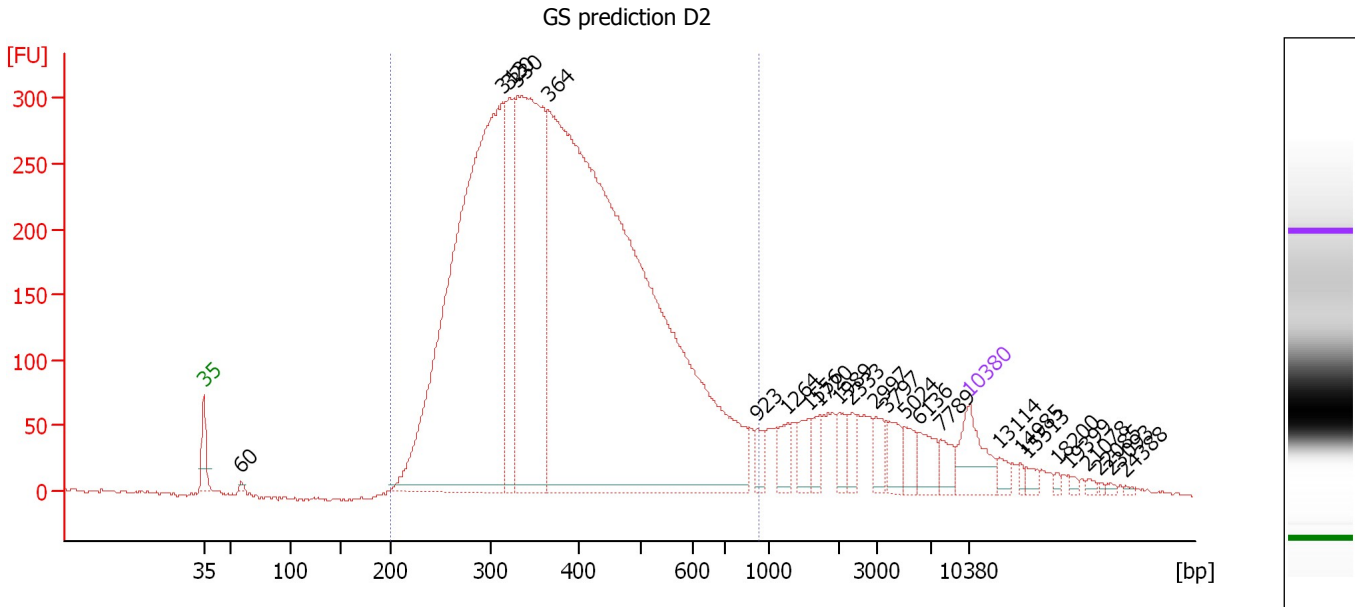
#### Region table for sample 10 : GS prediction B2

From [bp]	To [bp]	Average Size [bp]	Molarity [pmol/l]	Conc. [pg/μl]	Co Corr. lor Area	% of Total	Size distribution in CV [%]
200	829	392	20,979.4	4,882.76	 5,351.3	82	29.5

Assay Class: High Sensitivity DNA Assay  
 Data Path: C:\... bioanalyzer\2100 expert\Data\2014-08-19\2014-08-19\_001.xad

Created: 8/19/2014 2:59:03 PM  
 Modified: 8/19/2014 3:55:35 PM

**Electropherogram Summary Continued ...**



**Overall Results for sample 11 : GS prediction D2**

Number of peaks found: 25                      Corr. Area 1: 7,661.3  
 Noise: 1.3

**Peak table for sample 11 : GS prediction D2**

Peak	Size [bp]	Conc. [pg/μl]	Molarity [pmol/l]	Observations
1	35	125.00	5,411.3	Lower Marker
2	60	5.87	148.9	
3	313	1,841.97	8,918.8	
4	320	261.72	1,238.5	
5	330	954.99	4,386.2	
6	364	3,073.54	12,778.3	
7	923	25.14	41.3	
8	1,264	38.12	45.7	
9	1,556	43.67	42.5	
10	1,720	28.54	25.1	
11	1,989	28.40	21.6	
12	2,333	27.94	18.1	
13	2,997	30.15	15.2	
14	3,797	41.52	16.6	
15	5,024	30.64	9.2	
16	6,136	42.65	10.5	
17	7,789	29.97	5.8	
18	10,380	75.00	10.9	Upper Marker
19	13,114	0.00	0.0	
20	14,985	0.00	0.0	
21	15,513	0.00	0.0	
22	18,200	0.00	0.0	
23	19,399	0.00	0.0	
24	21,078	0.00	0.0	
25	22,085	0.00	0.0	
26	23,093	0.00	0.0	


Assay Class: High Sensitivity DNA Assay  
Data Path: C:\... bioanalyzer\2100 expert\Data\2014-08-19\2014-08-19\_001.xad

Created: 8/19/2014 2:59:03 PM  
Modified: 8/19/2014 3:55:35 PM

**Electropherogram Summary Continued ...****... Peak table for sample 11 : GS prediction D2**

Peak	Size [bp]	Conc. [pg/μl]	Molarity [pmol/l]	Observations
27	24,388	0.00	0.0	

**Region table for sample 11 : GS prediction D2**

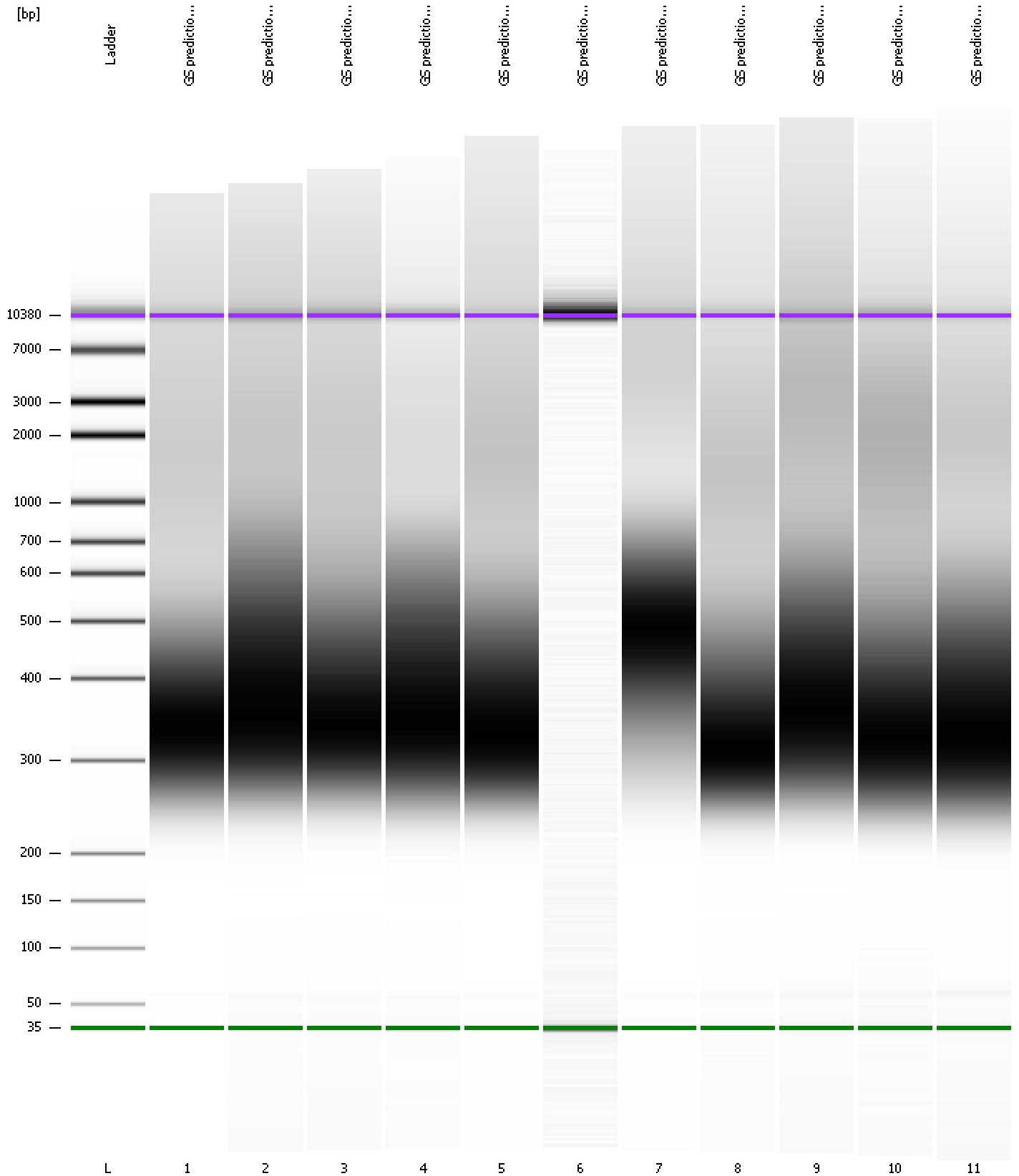
From [bp]	To [bp]	Average Size [bp]	Molarity [pmol/l]	Conc. [pg/μl]	Co Corr. lor Area	% of Total	Size distribution in CV [%]
200	930	398	25,137.1	5,901.71	 7,661.3	88	30.9



Assay Class: High Sensitivity DNA Assay  
Data Path: C:\... bioanalyzer\2100 expert\Data\2014-08-19\2014-08-19\_001.xad

Created: 8/19/2014 2:59:03 PM  
Modified: 8/19/2014 3:55:35 PM

**Gel Image**

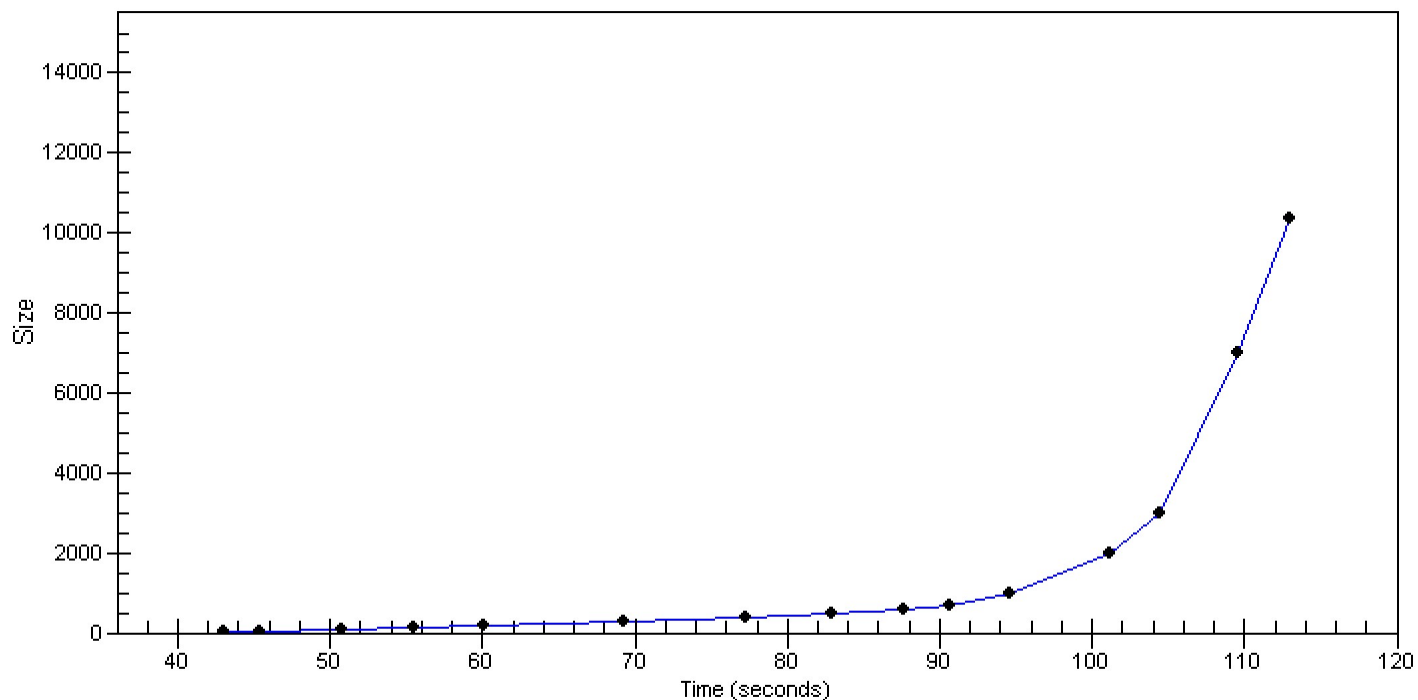


Assay Class: High Sensitivity DNA Assay  
Data Path: C:\... bioanalyzer\2100 expert\Data\2014-08-19\2014-08-19\_001.xad

Created: 8/19/2014 2:59:03 PM  
Modified: 8/19/2014 3:55:35 PM

**Curves**

**Standard Curve**



Assay Class: High Sensitivity DNA Assay  
 Data Path: C:\... bioanalyzer\2100 expert\Data\2014-08-19\2014-08-19\_001.xad

Created: 8/19/2014 2:59:03 PM  
 Modified: 8/19/2014 3:55:35 PM

**Run Logbook**

Description	Number	Source	Category	Sub Category	Time	Time Zone	User	Host
Run ended on port 1 (Number of wells acquired: 12)		Instrument	Run		8/19/2014 3:40:23 PM	(GMT --07:00) Pacific Standard Time	UC Davis	D8XSMGH1
Run started on port 1 (File: C:\Program Files\Agilent\2100 bioanalyzer\2100 expert\Data\2014-08-19\2014-08-19_001.xad)		Instrument	Run		8/19/2014 2:59:08 PM	(GMT --07:00) Pacific Standard Time	UC Davis	D8XSMGH1
Product Number : G2938B		Instrument	Run		8/19/2014 2:59:08 PM	(GMT --07:00) Pacific Standard Time	UC Davis	D8XSMGH1
Name :		Instrument	Run		8/19/2014 2:59:08 PM	(GMT --07:00) Pacific Standard Time	UC Davis	D8XSMGH1
Vendor : Agilent Technologies		Instrument	Run		8/19/2014 2:59:08 PM	(GMT --07:00) Pacific Standard Time	UC Davis	D8XSMGH1
Serial# : DE13701086		Instrument	Run		8/19/2014 2:59:08 PM	(GMT --07:00) Pacific Standard Time	UC Davis	D8XSMGH1
Firmware : C.01.069		Instrument	Run		8/19/2014 2:59:08 PM	(GMT --07:00) Pacific Standard Time	UC Davis	D8XSMGH1
Cartridge : Electrode		Instrument	Run		8/19/2014 2:59:08 PM	(GMT --07:00) Pacific Standard Time	UC Davis	D8XSMGH1