

Assay Class: High Sensitivity DNA Assay  
Data Path: C:\...gh Sensitivity DNA Assay\_DE13701086\_2014-08-26\_14-28-05.xad

Created: 8/26/2014 2:28:05 PM  
Modified: 8/26/2014 3:12:41 PM

**Electrophoresis File Run Summary**

Instrument Information:

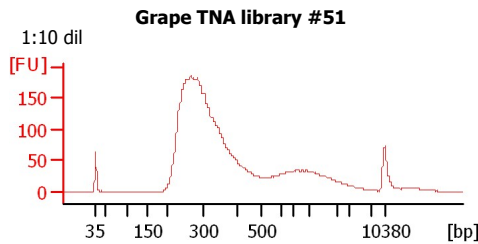
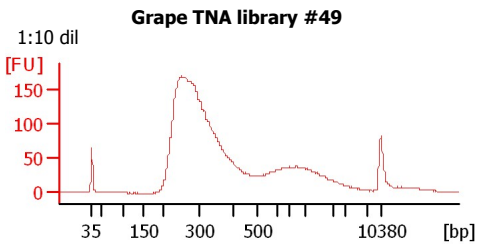
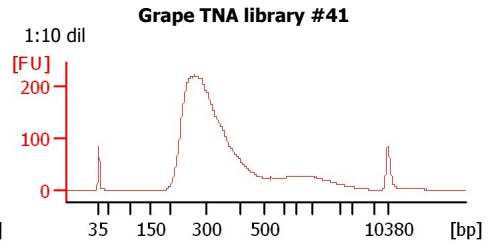
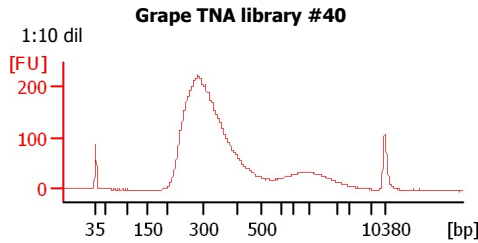
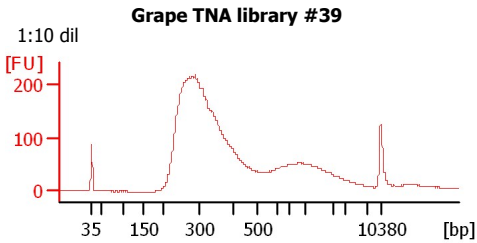
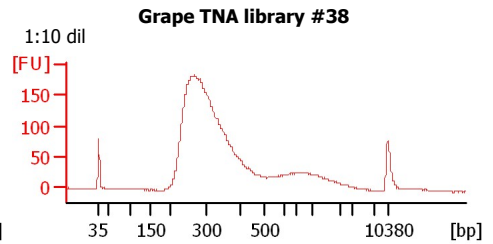
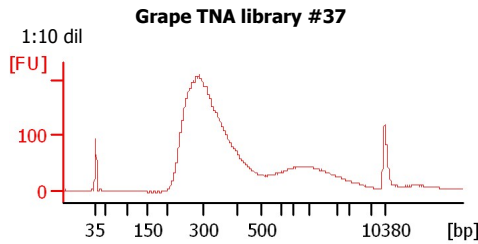
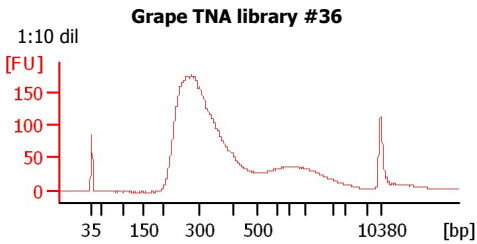
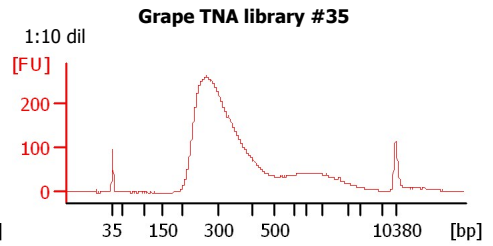
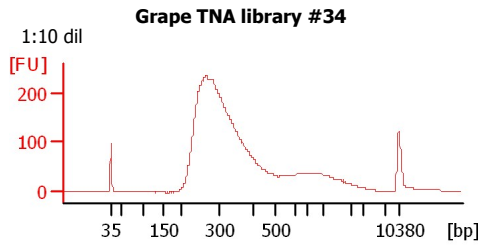
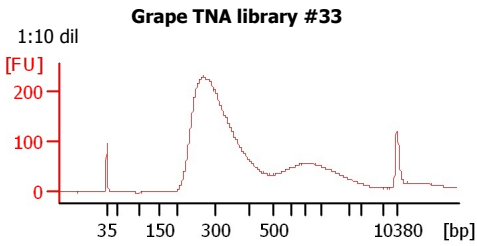
Instrument Name: DE13701086      Firmware: C.01.069  
Serial#: DE13701086      Type: G2938B

Assay Information:

Assay Origin Path: C:\Program Files\Agilent\2100 bioanalyzer\2100 expert\assays\dsDNA\High Sensitivity DNA.xsy  
Assay Class: High Sensitivity DNA Assay  
Version: 1.03  
Assay Comments: Copyright © 2003-2010 Agilent Technologies

Chip Information:

Chip Lot #:  
Reagent Kit Lot #:  
Chip Comments:



Assay Class: High Sensitivity DNA Assay  
Data Path: C:\...gh Sensitivity DNA Assay\_DE13701086\_2014-08-26\_14-28-05.xad

Created: 8/26/2014 2:28:05 PM  
Modified: 8/26/2014 3:12:41 PM

**Electrophoresis File Run Summary (Chip Summary)**

Sample Name	Sample Comment	Rest. Digest	Status	Observation	Result Label	Result Color
Grape TNA library #33	1:10 dil	<input type="checkbox"/>	✓			
Grape TNA library #34	1:10 dil	<input type="checkbox"/>	✓			
Grape TNA library #35	1:10 dil	<input type="checkbox"/>	✓			
Grape TNA library #36	1:10 dil	<input type="checkbox"/>	✓			
Grape TNA library #37	1:10 dil	<input type="checkbox"/>	✓			
Grape TNA library #38	1:10 dil	<input type="checkbox"/>	✓			
Grape TNA library #39	1:10 dil	<input type="checkbox"/>	✓			
Grape TNA library #40	1:10 dil	<input type="checkbox"/>	✓			
Grape TNA library #41	1:10 dil	<input type="checkbox"/>	✓			
Grape TNA library #49	1:10 dil	<input type="checkbox"/>	✓			
Grape TNA library #51	1:10 dil	<input type="checkbox"/>	✓			
Ladder		<input type="checkbox"/>	✓			

**Chip Lot #****Reagent Kit Lot #****Chip Comments :**

Assay Class: High Sensitivity DNA Assay  
Data Path: C:\...gh Sensitivity DNA Assay\_DE13701086\_2014-08-26\_14-28-05.xad

Created: 8/26/2014 2:28:05 PM  
Modified: 8/26/2014 3:12:41 PM

## Electrophoresis Assay Details

### General Analysis Settings

Number of Available Sample and Ladder Wells (Max.) : 12  
Minimum Visible Range [s] : 32  
Maximum Visible Range [s] : 138  
Start Analysis Time Range [s] : 33  
End Analysis Time Range [s] : 137.5  
Ladder Concentration [pg/ $\mu$ l] : 1950  
Uses Standard Area for Ladder Fragments  
Lower Marker Concentration [pg/ $\mu$ l] : 125  
Upper Marker Concentration [pg/ $\mu$ l] : 75  
Used Upper Marker for Quantitation  
Standard Curve Fit is Point to Point  
Show Data Aligned to Lower and Upper Marker

### Integrator Settings

Integration Start Time [s] : 33.05  
Integration End Time [s] : 137  
Slope Threshold : 0.8  
Height Threshold [FU] : 5  
Area Threshold : 0.1  
Width Threshold [s] : 0.6  
Baseline Plateau [s] : 0.5

### Filter Settings

Filter Width [s] : 0.5  
Polynomial Order : 4

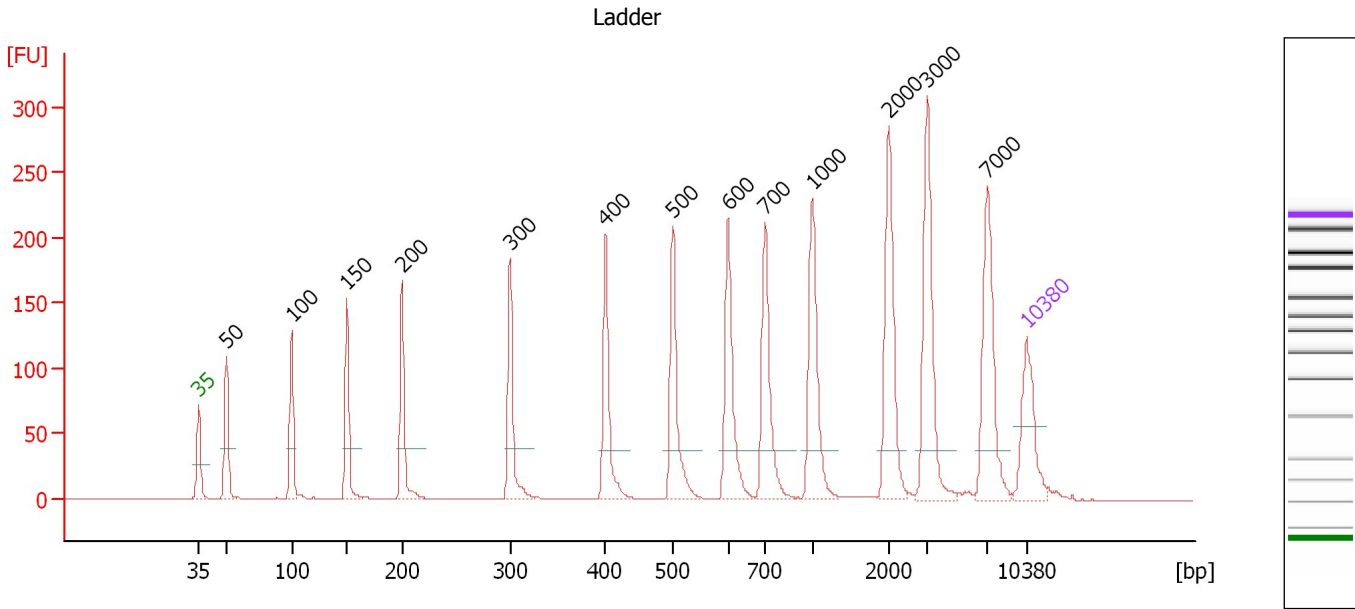
### Ladder

Ladder Peak	Size	Area
1	35	160
2	50	210
3	100	208
4	150	221
5	200	242
6	300	270
7	400	305
8	500	306
9	600	336
10	700	321
11	1000	366
12	2000	413
13	3000	411
14	7000	400
15	10380	214

Assay Class: High Sensitivity DNA Assay  
 Data Path: C:\...gh Sensitivity DNA Assay\_DE13701086\_2014-08-26\_14-28-05.xad

Created: 8/26/2014 2:28:05 PM  
 Modified: 8/26/2014 3:12:41 PM

**Electropherogram Summary**



**Overall Results for Ladder**

Noise: 0.2

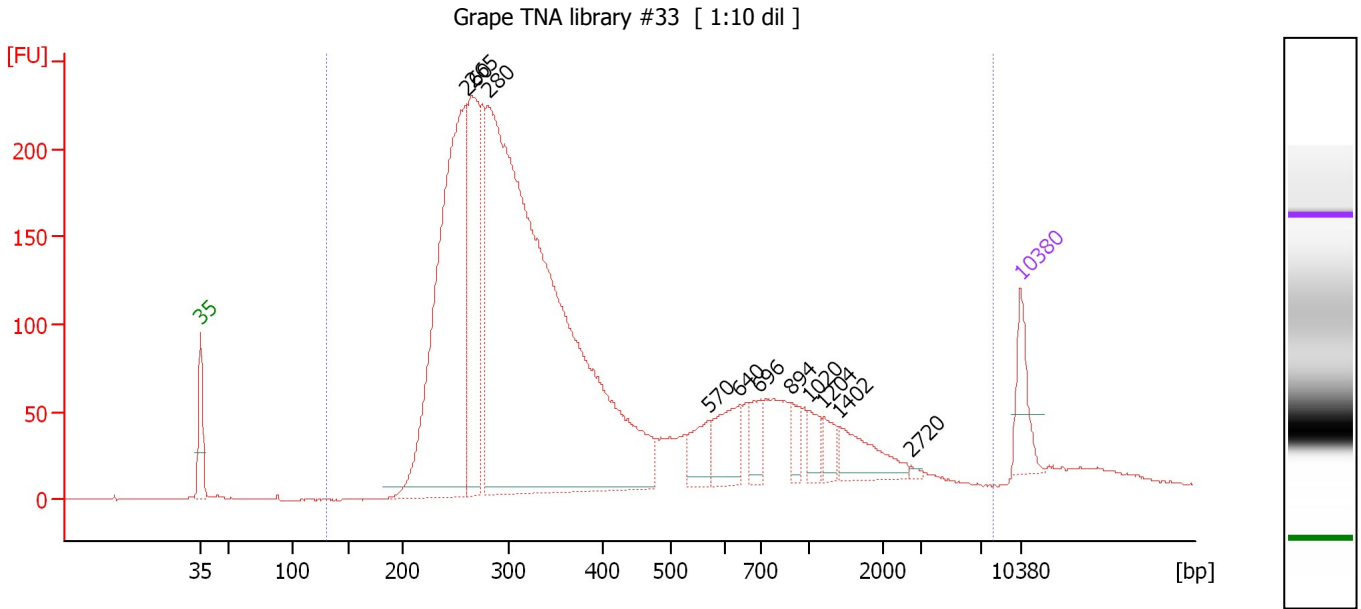
**Peak table for Ladder**

Peak	Size [bp]	Conc. [pg/μl]	Molarity [pmol/l]	Observations
1	35	125.00	5,411.3	Lower Marker
2	50	150.00	4,545.5	Ladder Peak
3	100	150.00	2,272.7	Ladder Peak
4	150	150.00	1,515.2	Ladder Peak
5	200	150.00	1,136.4	Ladder Peak
6	300	150.00	757.6	Ladder Peak
7	400	150.00	568.2	Ladder Peak
8	500	150.00	454.5	Ladder Peak
9	600	150.00	378.8	Ladder Peak
10	700	150.00	324.7	Ladder Peak
11	1,000	150.00	227.3	Ladder Peak
12	2,000	150.00	113.6	Ladder Peak
13	3,000	150.00	75.8	Ladder Peak
14	7,000	150.00	32.5	Ladder Peak
15	10,380	75.00	10.9	Upper Marker

Assay Class: High Sensitivity DNA Assay  
 Data Path: C:\...gh Sensitivity DNA Assay\_DE13701086\_2014-08-26\_14-28-05.xad

Created: 8/26/2014 2:28:05 PM  
 Modified: 8/26/2014 3:12:41 PM

**Electropherogram Summary Continued ...**



**Overall Results for sample 1 : Grape TNA library #33**

Number of peaks found: 11                      Corr. Area 1: 4,728.4  
 Noise: 0.2

**Peak table for sample 1 : Grape TNA library #33**

Peak	Size [bp]	Conc. [pg/µl]	Molarity [pmol/l]	Observations
1	35	125.00	5,411.3	Lower Marker
2	260	1,248.98	7,273.2	
3	265	494.01	2,822.7	
4	280	2,854.88	15,443.0	
5	570	75.27	200.0	
6	640	116.76	276.5	
7	696	68.14	148.4	
8	894	42.51	72.0	
9	1,020	43.48	64.6	
10	1,204	39.72	50.0	
11	1,402	100.46	108.6	
12	2,720	4.82	2.7	
13	10,380	75.00	10.9	Upper Marker

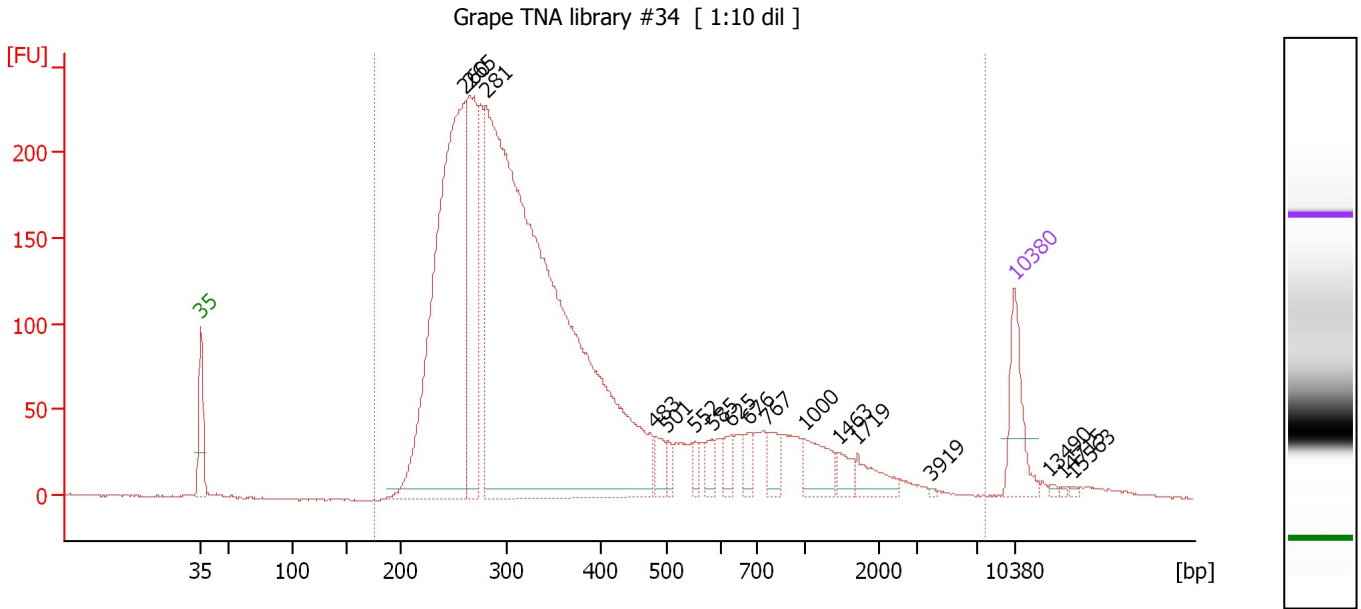
**Region table for sample 1 : Grape TNA library #33**

From [bp]	To [bp]	Corr. Area	% of Total	Average Size [bp]	Size distribution in CV [%]	Conc. [pg/µl]	Molarity [pmol/l]	Color
130	7,974	4,728.4	98	497	100.0	5,355.27	24,990.6	Blue

Assay Class: High Sensitivity DNA Assay  
 Data Path: C:\...gh Sensitivity DNA Assay\_DE13701086\_2014-08-26\_14-28-05.xad

Created: 8/26/2014 2:28:05 PM  
 Modified: 8/26/2014 3:12:41 PM

**Electropherogram Summary Continued ...**



**Overall Results for sample 2 : Grape TNA library #34**

Number of peaks found: 17                      Corr. Area 1: 4,743.6  
 Noise: 0.4

**Peak table for sample 2 : Grape TNA library #34**

Peak	Size [bp]	Conc. [pg/μl]	Molarity [pmol/l]	Observations
1	35	125.00	5,411.3	Lower Marker
2	260	1,051.24	6,115.0	
3	265	342.14	1,952.6	
4	281	2,344.96	12,665.4	
5	483	34.47	108.2	
6	501	18.68	56.5	
7	552	17.39	47.7	
8	585	26.33	68.3	
9	625	27.58	66.8	
10	676	30.63	68.7	
11	767	38.04	75.2	
12	1,000	61.70	93.5	
13	1,463	24.28	25.1	
14	1,719	36.58	32.2	
15	3,919	1.56	0.6	
16	10,380	75.00	10.9	Upper Marker
17	13,490	0.00	0.0	
18	14,715	0.00	0.0	
19	15,563	0.00	0.0	

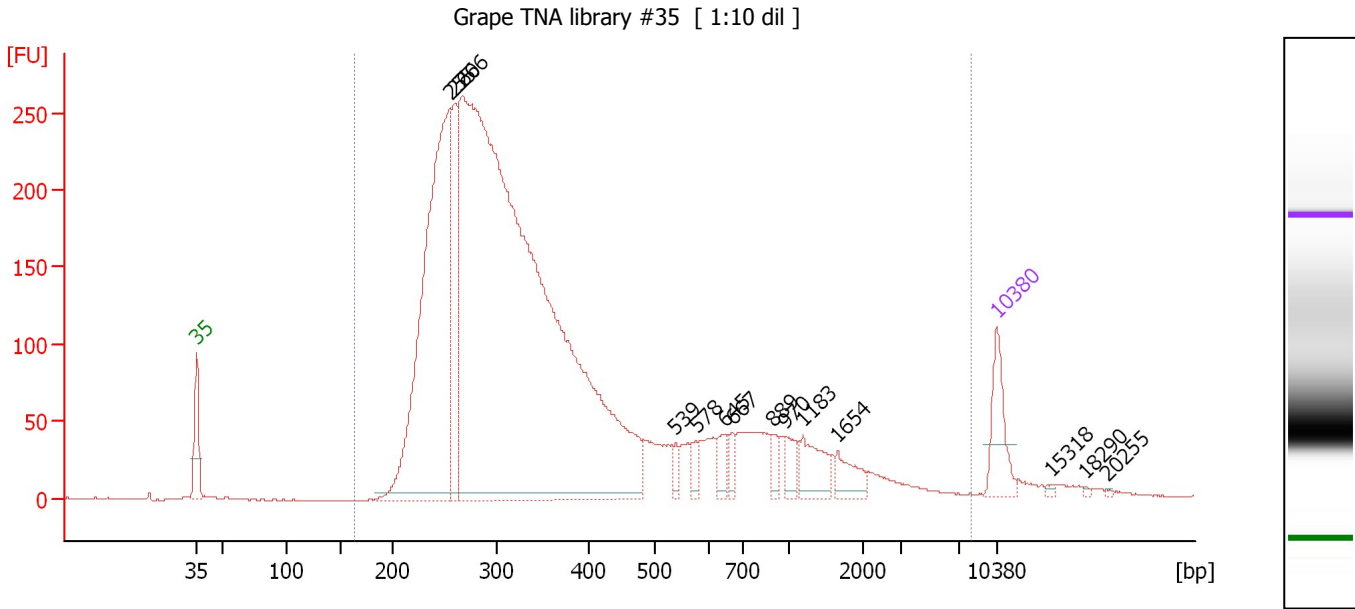
**Region table for sample 2 : Grape TNA library #34**

From [bp]	To [bp]	Corr. Area	% of Total	Average Size [bp]	Size distribution in CV [%]	Conc. [pg/μl]	Molarity [pmol/l]	Color
175	7,702	4,743.6	99	447	99.0	4,132.95	19,770.4	Blue

Assay Class: High Sensitivity DNA Assay  
 Data Path: C:\...gh Sensitivity DNA Assay\_DE13701086\_2014-08-26\_14-28-05.xad

Created: 8/26/2014 2:28:05 PM  
 Modified: 8/26/2014 3:12:41 PM

**Electropherogram Summary Continued ...**



**Overall Results for sample 3 : Grape TNA library #35**

Number of peaks found: 14                      Corr. Area 1: 5,338.2  
 Noise: 0.4

**Peak table for sample 3 : Grape TNA library #35**

Peak	Size [bp]	Conc. [pg/μl]	Molarity [pmol/l]	Observations
1	35	125.00	5,411.3	Lower Marker
2	255	1,121.29	6,660.3	
3	260	249.19	1,454.0	
4	266	3,538.24	20,131.0	
5	539	21.49	60.4	
6	578	22.89	60.0	
7	645	35.38	83.1	
8	667	23.72	53.9	
9	889	20.79	35.4	
10	970	31.68	49.5	
11	1,183	66.67	85.4	
12	1,654	42.45	38.9	
13	10,380	75.00	10.9	Upper Marker
14	15,318	0.00	0.0	
15	18,290	0.00	0.0	
16	20,255	0.00	0.0	

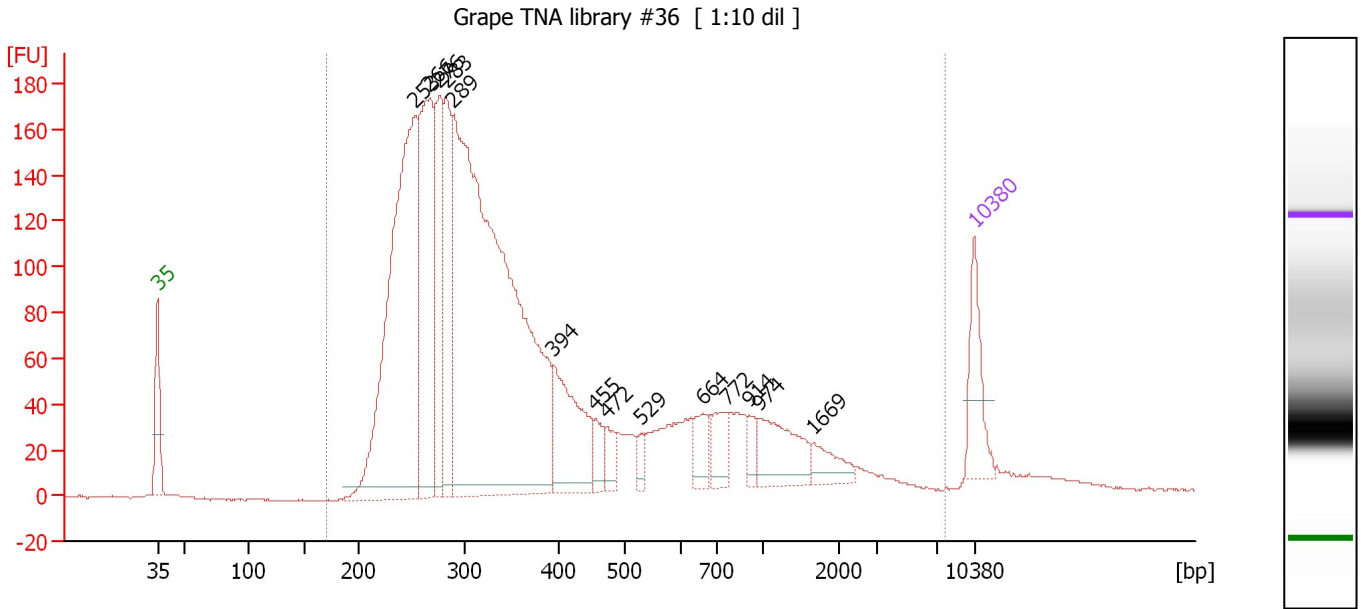
**Region table for sample 3 : Grape TNA library #35**

From [bp]	To [bp]	Corr. Area	% of Total	Average Size [bp]	Size distribution in CV [%]	Conc. [pg/μl]	Molarity [pmol/l]	Color
164	8,105	5,338.2	99	463	100.0	5,084.12	24,390.4	Blue

Assay Class: High Sensitivity DNA Assay  
 Data Path: C:\...gh Sensitivity DNA Assay\_DE13701086\_2014-08-26\_14-28-05.xad

Created: 8/26/2014 2:28:05 PM  
 Modified: 8/26/2014 3:12:41 PM

**Electropherogram Summary Continued ...**



**Overall Results for sample 4 : Grape TNA library #36**

Number of peaks found: 14                      Corr. Area 1: 3,663.6  
 Noise: 0.5

**Peak table for sample 4 : Grape TNA library #36**

Peak	Size [bp]	Conc. [pg/μl]	Molarity [pmol/l]	Observations
1	35	125.00	5,411.3	Lower Marker
2	253	854.27	5,106.1	
3	266	426.36	2,424.4	
4	276	232.68	1,278.3	
5	283	225.98	1,211.9	
6	289	1,536.62	8,048.3	
7	394	193.63	744.0	
8	455	36.08	120.0	
9	472	35.01	112.4	
10	529	18.92	54.2	
11	664	43.11	98.4	
12	772	47.13	92.5	
13	914	21.76	36.1	
14	974	102.69	159.7	
15	1,669	37.57	34.1	
16	10,380	75.00	10.9	Upper Marker

**Region table for sample 4 : Grape TNA library #36**

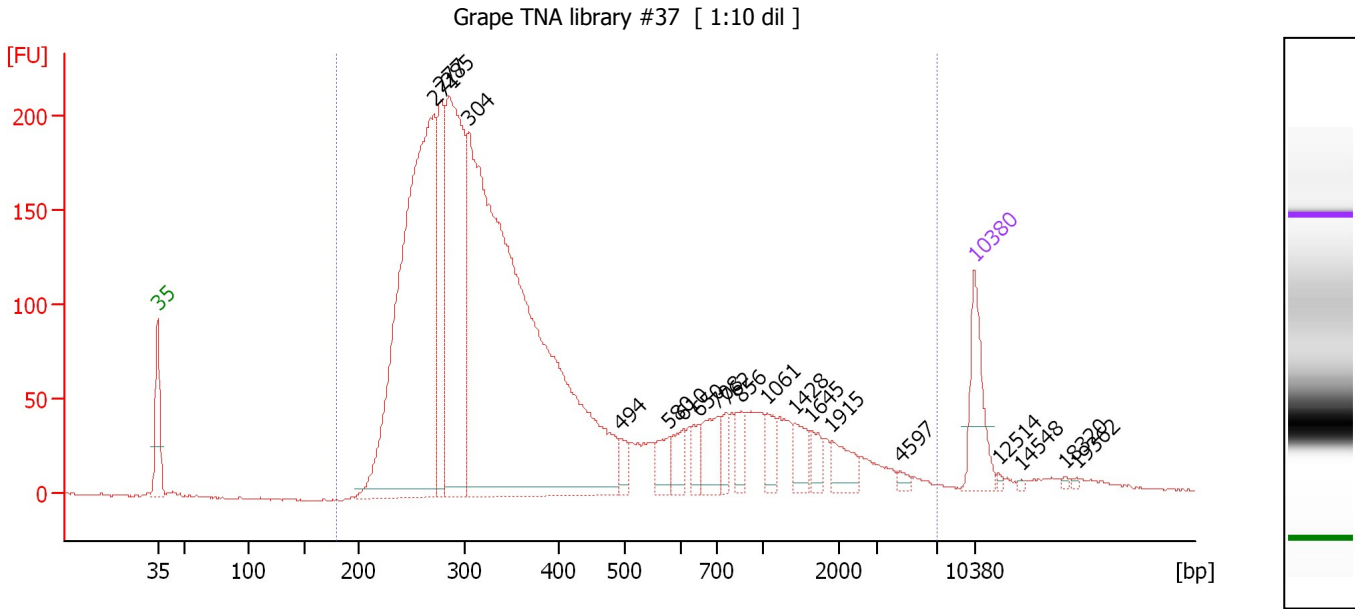
From [bp]	To [bp]	Corr. Area	% of Total	Average Size [bp]	Size distribution in CV [%]	Conc. [pg/μl]	Molarity [pmol/l]	Color
171	7,724	3,663.6	99	482	100.0	3,981.59	18,759.9	Blue



Assay Class: High Sensitivity DNA Assay  
 Data Path: C:\...gh Sensitivity DNA Assay\_DE13701086\_2014-08-26\_14-28-05.xad

Created: 8/26/2014 2:28:05 PM  
 Modified: 8/26/2014 3:12:41 PM

**Electropherogram Summary Continued ...**



**Overall Results for sample 5 : Grape TNA library #37**

Number of peaks found: 20                      Corr. Area 1: 4,259.4  
 Noise: 0.5

**Peak table for sample 5 : Grape TNA library #37**

Peak	Size [bp]	Conc. [pg/µl]	Molarity [pmol/l]	Observations
1	35	125.00	5,411.3	Lower Marker
2	271	1,045.05	5,842.4	
3	277	205.71	1,123.8	
4	285	553.54	2,945.4	
5	304	1,675.25	8,342.5	
6	494	25.96	79.7	
7	580	32.98	86.2	
8	610	34.25	85.1	
9	650	23.33	54.3	
10	708	59.00	126.3	
11	762	26.25	52.2	
12	856	28.69	50.8	
13	1,061	32.39	46.3	
14	1,428	32.74	34.7	
15	1,645	21.78	20.1	
16	1,915	35.06	27.7	
17	4,597	6.82	2.2	
18	10,380	75.00	10.9	Upper Marker
19	12,514	0.00	0.0	
20	14,548	0.00	0.0	
21	18,320	0.00	0.0	
22	19,362	0.00	0.0	

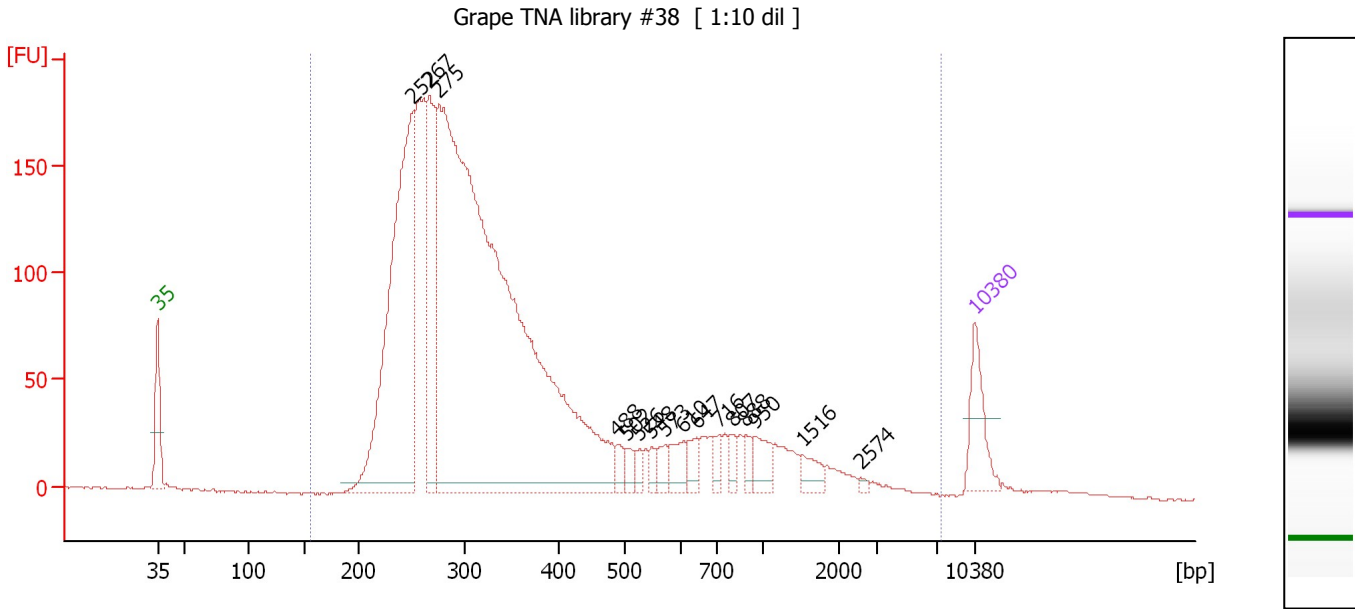
**Region table for sample 5 : Grape TNA library #37**

From [bp]	To [bp]	Corr. Area	% of Total	Average Size [bp]	Size distribution in CV [%]	Conc. [pg/µl]	Molarity [pmol/l]	Color
179	7,075	4,259.4	99	546	100.0	3,844.05	17,485.7	Blue

Assay Class: High Sensitivity DNA Assay  
 Data Path: C:\...gh Sensitivity DNA Assay\_DE13701086\_2014-08-26\_14-28-05.xad

Created: 8/26/2014 2:28:05 PM  
 Modified: 8/26/2014 3:12:41 PM

**Electropherogram Summary Continued ...**



**Overall Results for sample 6 : Grape TNA library #38**

Number of peaks found: 16                      Corr. Area 1: 3,542.5  
 Noise: 0.4

**Peak table for sample 6 : Grape TNA library #38**

Peak	Size [bp]	Conc. [pg/μl]	Molarity [pmol/l]	Observations
1	35	125.00	5,411.3	Lower Marker
2	252	892.42	5,368.8	
3	267	316.36	1,796.7	
4	275	2,690.28	14,804.9	
5	488	22.73	70.6	
6	502	22.40	67.6	
7	526	17.14	49.4	
8	548	17.15	47.4	
9	573	27.92	73.8	
10	610	42.32	105.2	
11	647	32.62	76.4	
12	716	23.61	50.0	
13	807	22.66	42.5	
14	888	21.11	36.0	
15	950	41.85	66.8	
16	1,516	28.26	28.2	
17	2,574	4.81	2.8	
18	10,380	75.00	10.9	Upper Marker

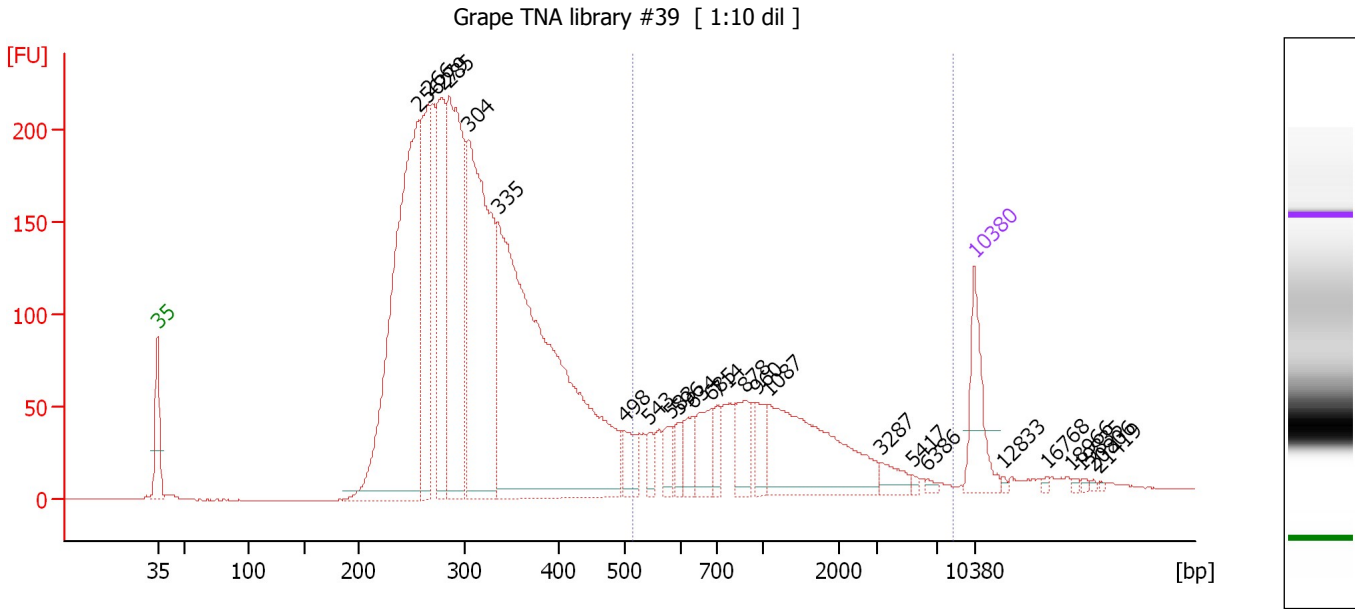
**Region table for sample 6 : Grape TNA library #38**

From [bp]	To [bp]	Corr. Area	% of Total	Average Size [bp]	Size distribution in CV [%]	Conc. [pg/μl]	Molarity [pmol/l]	Color
156	7,476	3,542.5	99	454	100.0	4,525.04	21,833.0	Blue

Assay Class: High Sensitivity DNA Assay  
 Data Path: C:\...gh Sensitivity DNA Assay\_DE13701086\_2014-08-26\_14-28-05.xad

Created: 8/26/2014 2:28:05 PM  
 Modified: 8/26/2014 3:12:41 PM

**Electropherogram Summary Continued ...**



**Overall Results for sample 7 : Grape TNA library #39**

Number of peaks found: 25                      Corr. Area 1: 921.8  
 Noise: 0.2

**Peak table for sample 7 : Grape TNA library #39**

Peak	Size [bp]	Conc. [pg/μl]	Molarity [pmol/l]	Observations
1	35	125.00	5,411.3	Lower Marker
2	256	828.25	4,893.5	
3	266	282.61	1,611.6	
4	279	280.95	1,527.1	
5	285	489.03	2,597.4	
6	304	593.13	2,959.7	
7	335	1,091.14	4,933.8	
8	498	49.45	150.5	
9	543	22.90	63.9	
10	583	32.01	83.1	
11	596	22.66	57.6	
12	634	40.83	97.6	
13	685	64.70	143.0	
14	714	27.65	58.7	
15	878	56.44	97.4	
16	960	41.63	65.7	
17	1,087	238.57	332.7	
18	3,287	21.63	10.0	
19	5,417	4.18	1.2	
20	6,386	4.60	1.1	
21	10,380	75.00	10.9	Upper Marker
22	12,833	0.00	0.0	
23	16,768	0.00	0.0	
24	18,966	0.00	0.0	
25	19,835	0.00	0.0	
26	20,806	0.00	0.0	

Assay Class: High Sensitivity DNA Assay  
Data Path: C:\...gh Sensitivity DNA Assay\_DE13701086\_2014-08-26\_14-28-05.xad

Created: 8/26/2014 2:28:05 PM  
Modified: 8/26/2014 3:12:41 PM

**Electropherogram Summary Continued ...****... Peak table for sample 7 : Grape TNA library #39**

Peak	Size [bp]	Conc. [pg/ $\mu$ l]	Molarity [pmol/l]	Observations
27	21,419	0.00	0.0	

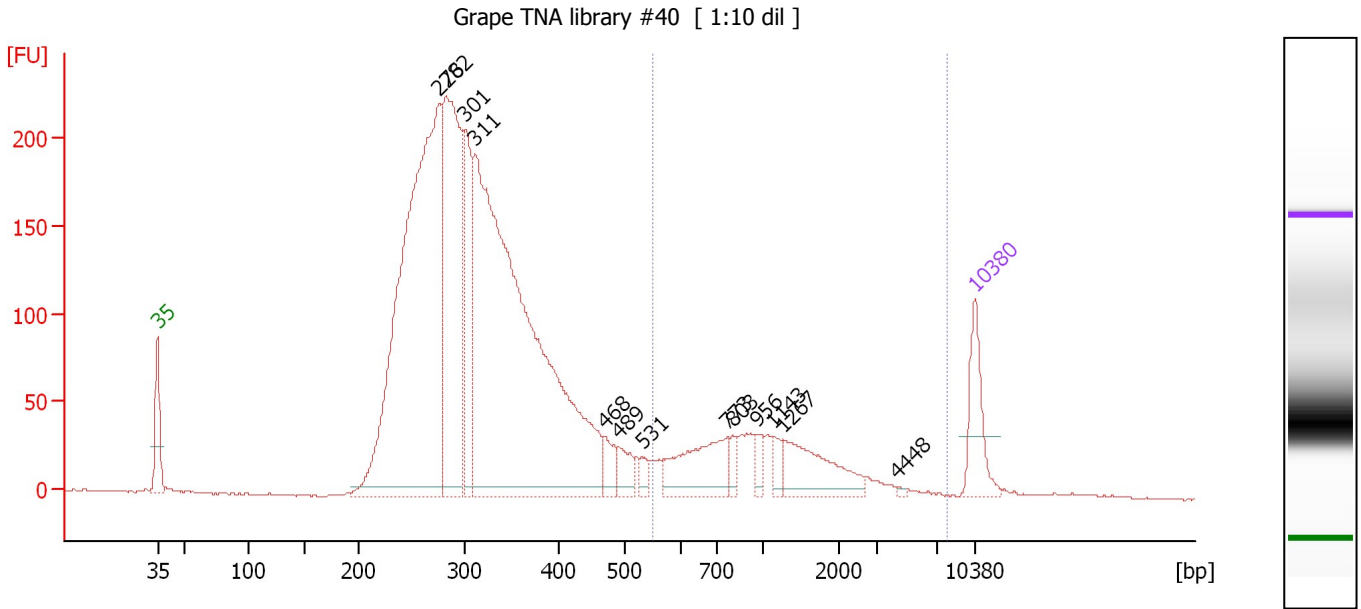
**Region table for sample 7 : Grape TNA library #39**

From [bp]	To [bp]	Corr. Area	% of Total	Average Size [bp]	Size distribution in CV [%]	Conc. [pg/ $\mu$ l]	Molarity [pmol/l]	Color
512	8,536	921.8	19	1,387	87.5	669.78	1,145.4	

Assay Class: High Sensitivity DNA Assay  
 Data Path: C:\...gh Sensitivity DNA Assay\_DE13701086\_2014-08-26\_14-28-05.xad

Created: 8/26/2014 2:28:05 PM  
 Modified: 8/26/2014 3:12:41 PM

**Electropherogram Summary Continued ...**



**Overall Results for sample 8 : Grape TNA library #40**

Number of peaks found: 13                      Corr. Area 1: 545.3  
 Noise: 0.4

**Peak table for sample 8 : Grape TNA library #40**

Peak	Size [bp]	Conc. [pg/μl]	Molarity [pmol/l]	Observations
1	35	125.00	5,411.3	Lower Marker
2	276	1,294.29	7,107.6	
3	282	578.85	3,104.7	
4	301	233.17	1,175.1	
5	311	1,540.77	7,501.3	
6	468	41.68	134.9	
7	489	39.35	121.9	
8	531	19.72	56.3	
9	773	134.21	263.2	
10	803	19.38	36.6	
11	956	18.26	28.9	
12	1,143	21.44	28.4	
13	1,267	112.82	134.9	
14	4,448	2.47	0.8	
15	10,380	75.00	10.9	Upper Marker

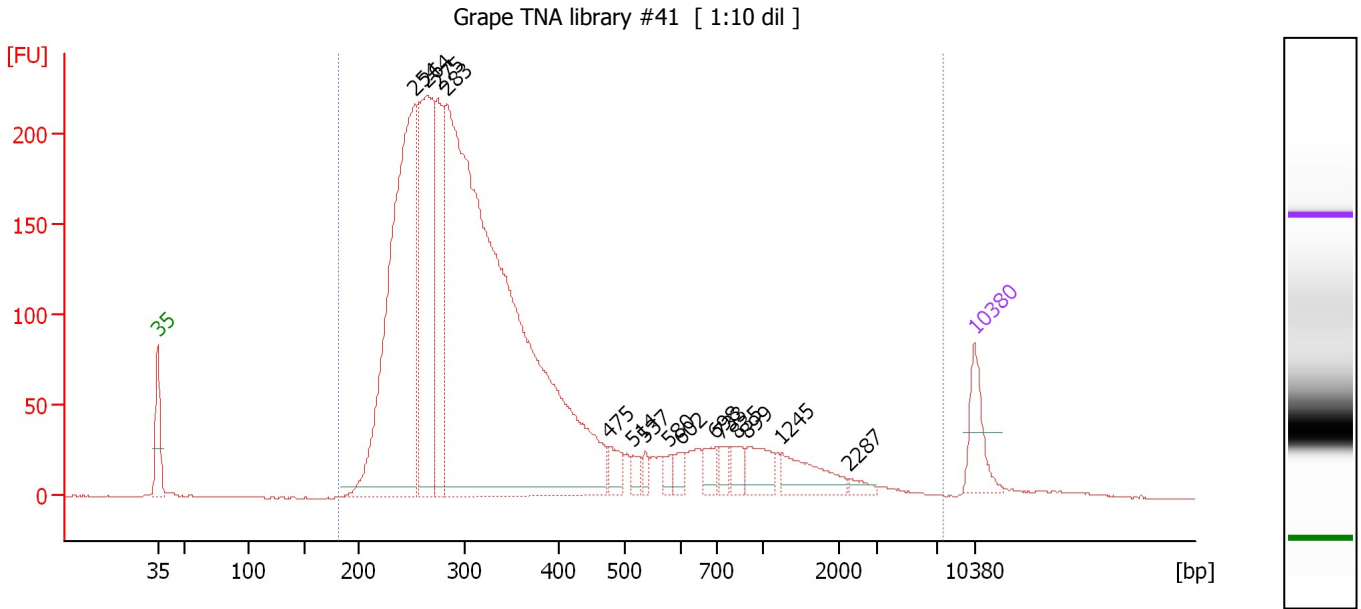
**Region table for sample 8 : Grape TNA library #40**

From [bp]	To [bp]	Corr. Area	% of Total	Average Size [bp]	Size distribution in CV [%]	Conc. [pg/μl]	Molarity [pmol/l]	Color
549	7,973	545.3	13	1,340	76.7	411.14	664.0	Blue

Assay Class: High Sensitivity DNA Assay  
 Data Path: C:\...gh Sensitivity DNA Assay\_DE13701086\_2014-08-26\_14-28-05.xad

Created: 8/26/2014 2:28:05 PM  
 Modified: 8/26/2014 3:12:41 PM

**Electropherogram Summary Continued ...**



**Overall Results for sample 9 : Grape TNA library #41**

Number of peaks found: 15                      Corr. Area 1: 4,184.5  
 Noise: 0.3

**Peak table for sample 9 : Grape TNA library #41**

Peak	Size [bp]	Conc. [pg/μl]	Molarity [pmol/l]	Observations
1	35	125.00	5,411.3	Lower Marker
2	254	1,165.90	6,962.2	
3	264	618.84	3,549.0	
4	275	362.26	1,998.3	
5	283	2,702.72	14,445.0	
6	475	46.93	149.8	
7	514	25.57	75.3	
8	537	18.30	51.6	
9	580	22.23	58.1	
10	602	28.56	71.8	
11	698	35.26	76.5	
12	733	29.44	60.8	
13	835	36.31	65.9	
14	899	64.71	109.0	
15	1,245	83.24	101.3	
16	2,287	12.52	8.3	
17	10,380	75.00	10.9	Upper Marker

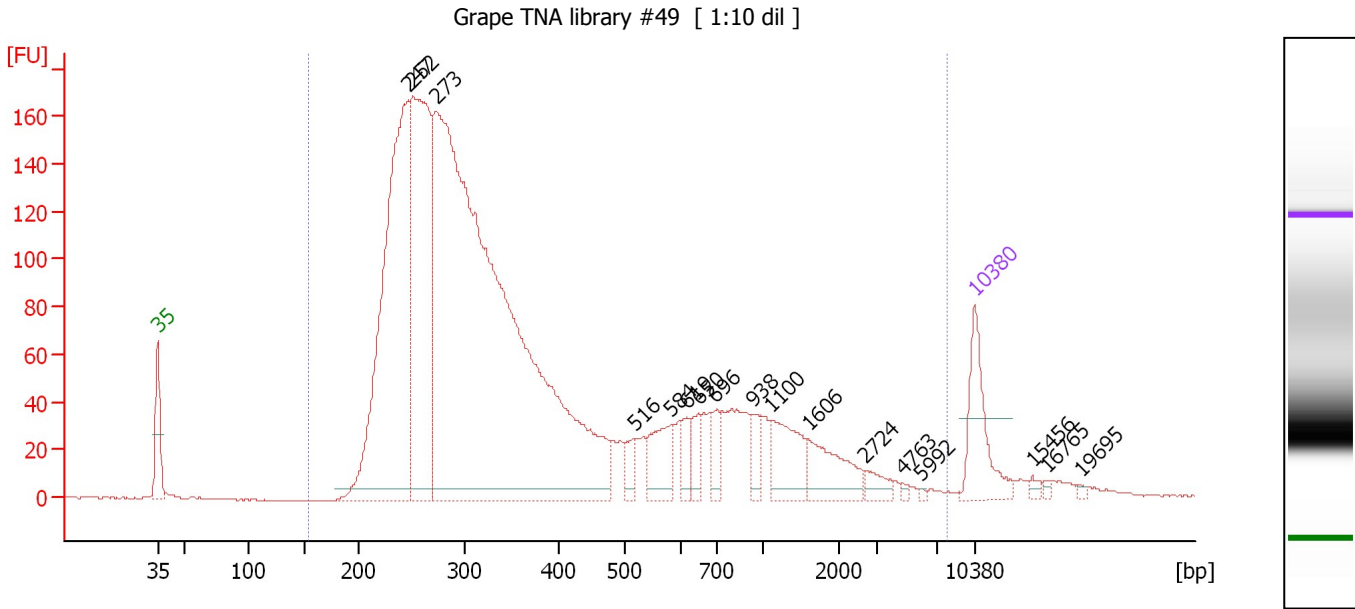
**Region table for sample 9 : Grape TNA library #41**

From [bp]	To [bp]	Corr. Area	% of Total	Average Size [bp]	Size distribution in CV [%]	Conc. [pg/μl]	Molarity [pmol/l]	Color
182	7,523	4,184.5	99	444	100.0	5,192.97	25,386.8	Blue

Assay Class: High Sensitivity DNA Assay  
 Data Path: C:\...gh Sensitivity DNA Assay\_DE13701086\_2014-08-26\_14-28-05.xad

Created: 8/26/2014 2:28:05 PM  
 Modified: 8/26/2014 3:12:41 PM

**Electropherogram Summary Continued ...**



**Overall Results for sample 10 : Grape TNA library #49**

Number of peaks found: 17                      Corr. Area 1: 3,503.8  
 Noise: 0.3

**Peak table for sample 10 : Grape TNA library #49**

Peak	Size [bp]	Conc. [pg/μl]	Molarity [pmol/l]	Observations
1	35	125.00	5,411.3	Lower Marker
2	247	749.00	4,589.4	
3	252	553.58	3,331.9	
4	273	1,969.52	10,935.2	
5	516	25.25	74.2	
6	584	67.03	173.9	
7	619	25.45	62.3	
8	650	26.42	61.6	
9	696	28.11	61.2	
10	938	28.08	45.4	
11	1,100	75.66	104.2	
12	1,606	67.22	63.4	
13	2,724	17.02	9.5	
14	4,763	3.26	1.0	
15	5,992	1.95	0.5	
16	10,380	75.00	10.9	Upper Marker
17	15,456	0.00	0.0	
18	16,765	0.00	0.0	
19	19,695	0.00	0.0	

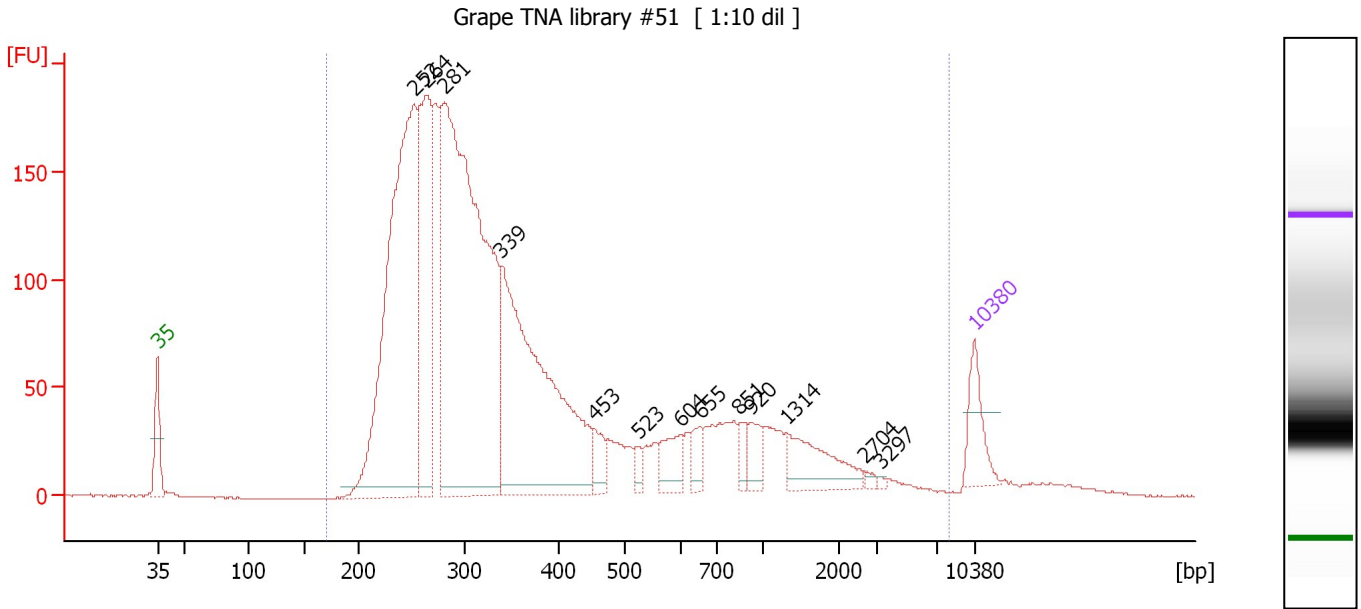
**Region table for sample 10 : Grape TNA library #49**

From [bp]	To [bp]	Corr. Area	% of Total	Average Size [bp]	Size distribution in CV [%]	Conc. [pg/μl]	Molarity [pmol/l]	Color
154	7,943	3,503.8	98	528	100.0	3,591.41	17,123.8	Blue

Assay Class: High Sensitivity DNA Assay  
 Data Path: C:\...gh Sensitivity DNA Assay\_DE13701086\_2014-08-26\_14-28-05.xad

Created: 8/26/2014 2:28:05 PM  
 Modified: 8/26/2014 3:12:41 PM

**Electropherogram Summary Continued ...**



**Overall Results for sample 11 : Grape TNA library #51**

Number of peaks found: 13                      Corr. Area 1: 3,721.4  
 Noise: 0.3

**Peak table for sample 11 : Grape TNA library #51**

Peak	Size [bp]	Conc. [pg/μl]	Molarity [pmol/l]	Observations
1	35	125.00	5,411.3	Lower Marker
2	252	1,255.10	7,532.0	
3	264	528.94	3,032.0	
4	281	1,666.83	8,980.2	
5	339	921.21	4,119.6	
6	453	53.29	178.3	
7	523	23.41	67.8	
8	604	68.34	171.5	
9	655	43.56	100.7	
10	851	30.70	54.7	
11	920	48.16	79.3	
12	1,314	122.59	141.3	
13	2,704	6.87	3.8	
14	3,297	3.40	1.6	
15	10,380	75.00	10.9	Upper Marker

**Region table for sample 11 : Grape TNA library #51**

From [bp]	To [bp]	Corr. Area	% of Total	Average Size [bp]	Size distribution in CV [%]	Conc. [pg/μl]	Molarity [pmol/l]	Color
171	8,103	3,721.4	98	522	100.0	5,404.29	25,692.0	Blue



---

Assay Class: High Sensitivity DNA Assay  
Data Path: C:\...gh Sensitivity DNA Assay\_DE13701086\_2014-08-26\_14-28-05.xad

Created: 8/26/2014 2:28:05 PM  
Modified: 8/26/2014 3:12:41 PM

**Gel Image**

Assay Class: High Sensitivity DNA Assay Created: 8/26/2014 2:28:05 PM  
 Data Path: C:\...gh Sensitivity DNA Assay\_DE13701086\_2014-08-26\_14-28-05.xad Modified: 8/26/2014 3:12:41 PM

**Run Logbook**

Description	Number	Source	Category	Sub Category	Time	Time Zone	User	Host
Run ended on port 1 (Number of wells acquired: 12)		Instrument	Run		8/26/2014 3:09:24 PM	(GMT --07:00) Pacific Standard Time	UC Davis	D8XSMGH1
Run started on port 1 (File: C:\Program Files\Agilent\2100 bioanalyzer\2100 expert\Data\2014-08-26\2100 expert_High Sensitivity DNA Assay_DE13701086_2014-08-26_14-28-05.xad)		Instrument	Run		8/26/2014 2:28:10 PM	(GMT --07:00) Pacific Standard Time	UC Davis	D8XSMGH1
Product Number : G2938B		Instrument	Run		8/26/2014 2:28:10 PM	(GMT --07:00) Pacific Standard Time	UC Davis	D8XSMGH1
Name :		Instrument	Run		8/26/2014 2:28:10 PM	(GMT --07:00) Pacific Standard Time	UC Davis	D8XSMGH1
Vendor : Agilent Technologies		Instrument	Run		8/26/2014 2:28:10 PM	(GMT --07:00) Pacific Standard Time	UC Davis	D8XSMGH1
Serial# : DE13701086		Instrument	Run		8/26/2014 2:28:10 PM	(GMT --07:00) Pacific Standard Time	UC Davis	D8XSMGH1
Firmware : C.01.069		Instrument	Run		8/26/2014 2:28:10 PM	(GMT --07:00) Pacific Standard Time	UC Davis	D8XSMGH1
Cartridge : Electrode		Instrument	Run		8/26/2014 2:28:10 PM	(GMT --07:00) Pacific Standard Time	UC Davis	D8XSMGH1