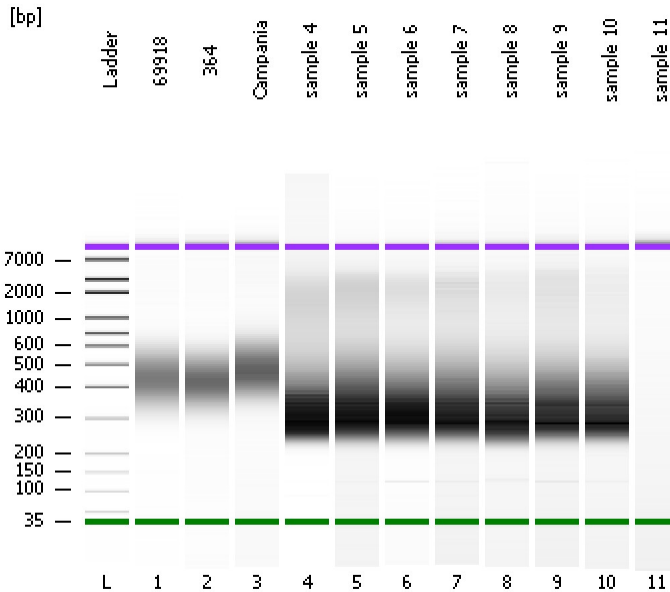


Assay Class: High Sensitivity DNA Assay
Data Path: C:\...ents and Settings\Bioanalyzer\2014-09-15\2014-09-15_002.xad

Created: 9/15/2014 11:27:51 AM
Modified: 9/15/2014 12:09:06 PM

Electrophoresis File Run Summary



Instrument Information:

Instrument Name: DE13701086 Firmware: C.01.069
Serial#: DE13701086 Type: G2938B

Assay Information:

Assay Origin Path: C:\Program Files\Agilent\2100 bioanalyzer\2100 expert\assays\dsDNA\High Sensitivity DNA.xsy
Assay Class: High Sensitivity DNA Assay
Version: 1.03
Assay Comments: Copyright © 2003-2010 Agilent Technologies

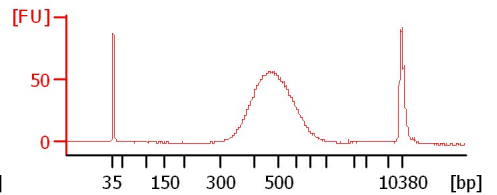
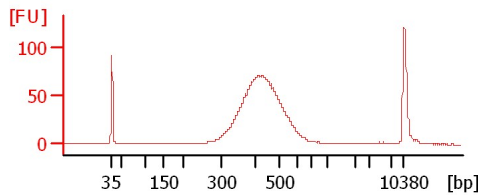
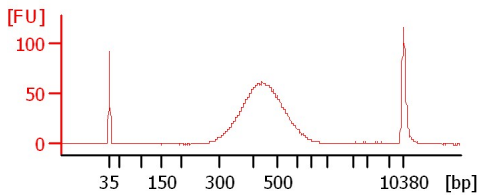
Chip Information:

Chip Lot #: Reagent Kit Lot #: Chip Comments:

69918

364

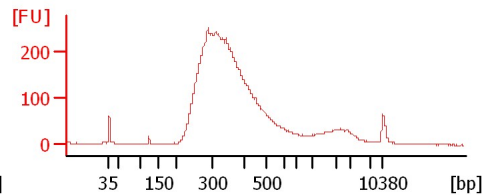
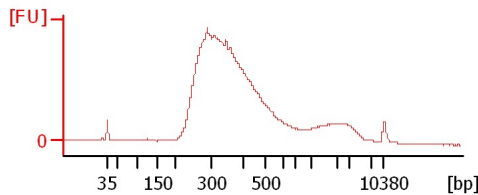
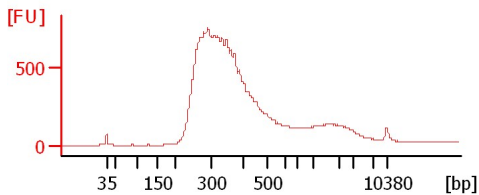
Campania



sample 4

sample 5

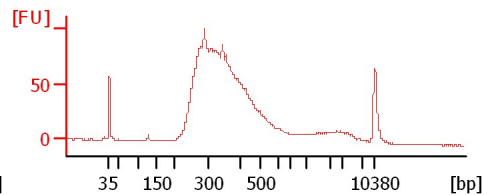
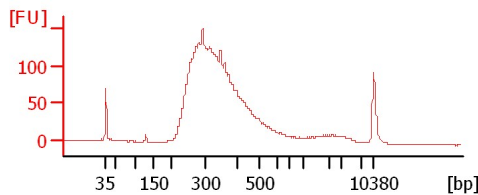
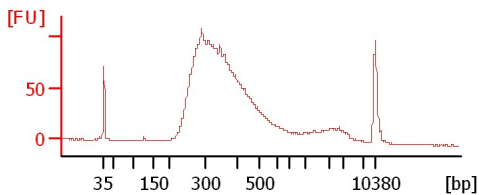
sample 6



sample 7

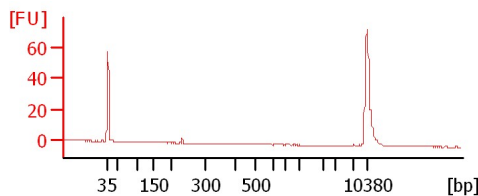
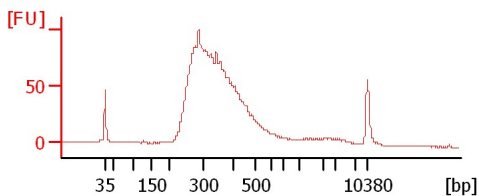
sample 8

sample 9



sample 10

sample 11



Assay Class: High Sensitivity DNA Assay
 Data Path: C:\...ents and Settings\Bioanalyzer\2014-09-15\2014-09-15_002.xad

Created: 9/15/2014 11:27:51 AM
 Modified: 9/15/2014 12:09:06 PM

Electrophoresis File Run Summary (Chip Summary)

Sample Name	Sample Comment	Rest. Digest	Status	Observation	Result Label	Result Color
69918		<input type="checkbox"/>	✓			
364		<input type="checkbox"/>	✓			
Campania		<input type="checkbox"/>	✓			
sample 4		<input type="checkbox"/>	✓			
sample 5		<input type="checkbox"/>	✓			
sample 6		<input type="checkbox"/>	✓			
sample 7		<input type="checkbox"/>	✓			
sample 8		<input type="checkbox"/>	✓			
sample 9		<input type="checkbox"/>	✓			
sample 10		<input type="checkbox"/>	✓			
sample 11		<input type="checkbox"/>	✓			
Ladder		<input type="checkbox"/>	✓			

Chip Lot #

Reagent Kit Lot #

Chip Comments :

Assay Class: High Sensitivity DNA Assay
Data Path: C:\...ents and Settings\Bioanalyzer\2014-09-15\2014-09-15_002.xad

Created: 9/15/2014 11:27:51 AM
Modified: 9/15/2014 12:09:06 PM

Electrophoresis Assay Details

General Analysis Settings

Number of Available Sample and Ladder Wells (Max.) : 12
Minimum Visible Range [s] : 32
Maximum Visible Range [s] : 138
Start Analysis Time Range [s] : 33
End Analysis Time Range [s] : 137.5
Ladder Concentration [pg/μl] : 1950
Uses Standard Area for Ladder Fragments
Lower Marker Concentration [pg/μl] : 125
Upper Marker Concentration [pg/μl] : 75
Used Upper Marker for Quantitation
Standard Curve Fit is Point to Point
Show Data Aligned to Lower and Upper Marker

Integrator Settings

Integration Start Time [s] : 33.05
Integration End Time [s] : 137
Slope Threshold : 0.8
Height Threshold [FU] : 5
Area Threshold : 0.1
Width Threshold [s] : 0.6
Baseline Plateau [s] : 0.5

Filter Settings

Filter Width [s] : 0.5
Polynomial Order : 4

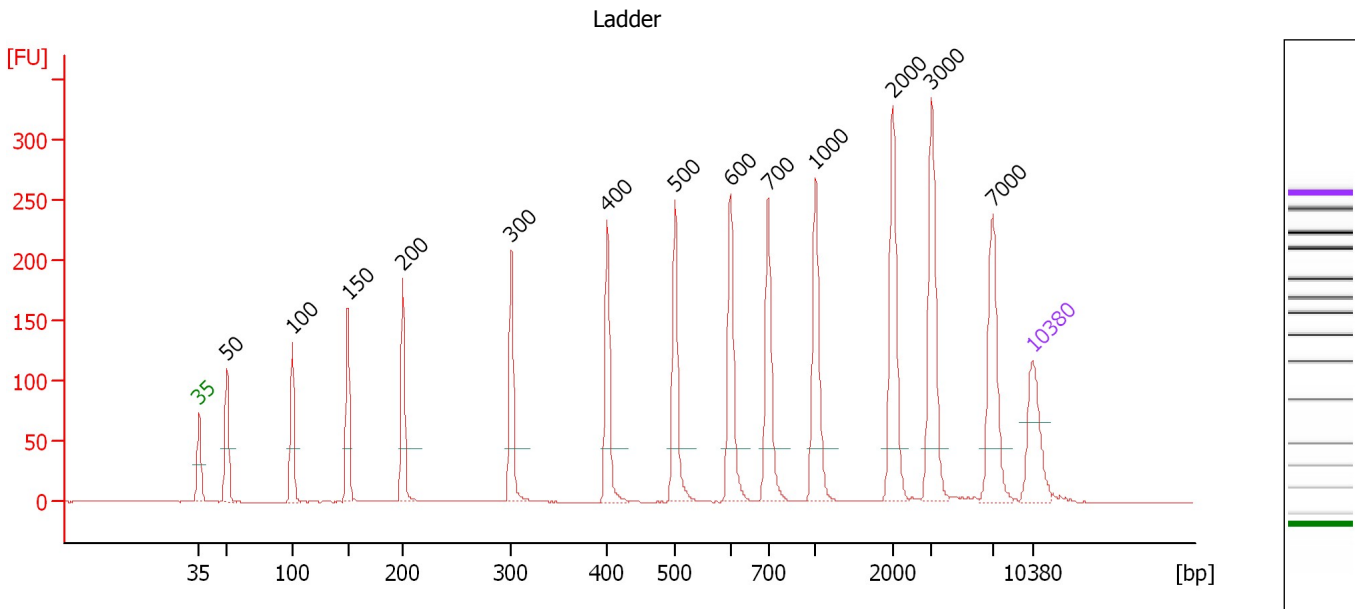
Ladder

Ladder Peak	Size	Area
1	35	160
2	50	210
3	100	208
4	150	221
5	200	242
6	300	270
7	400	305
8	500	306
9	600	336
10	700	321
11	1000	366
12	2000	413
13	3000	411
14	7000	400
15	10380	214

Assay Class: High Sensitivity DNA Assay
 Data Path: C:\...ents and Settings\Bioanalyzer\2014-09-15\2014-09-15_002.xad

Created: 9/15/2014 11:27:51 AM
 Modified: 9/15/2014 12:09:06 PM

Electropherogram Summary



Overall Results for Ladder

Noise: 0.1

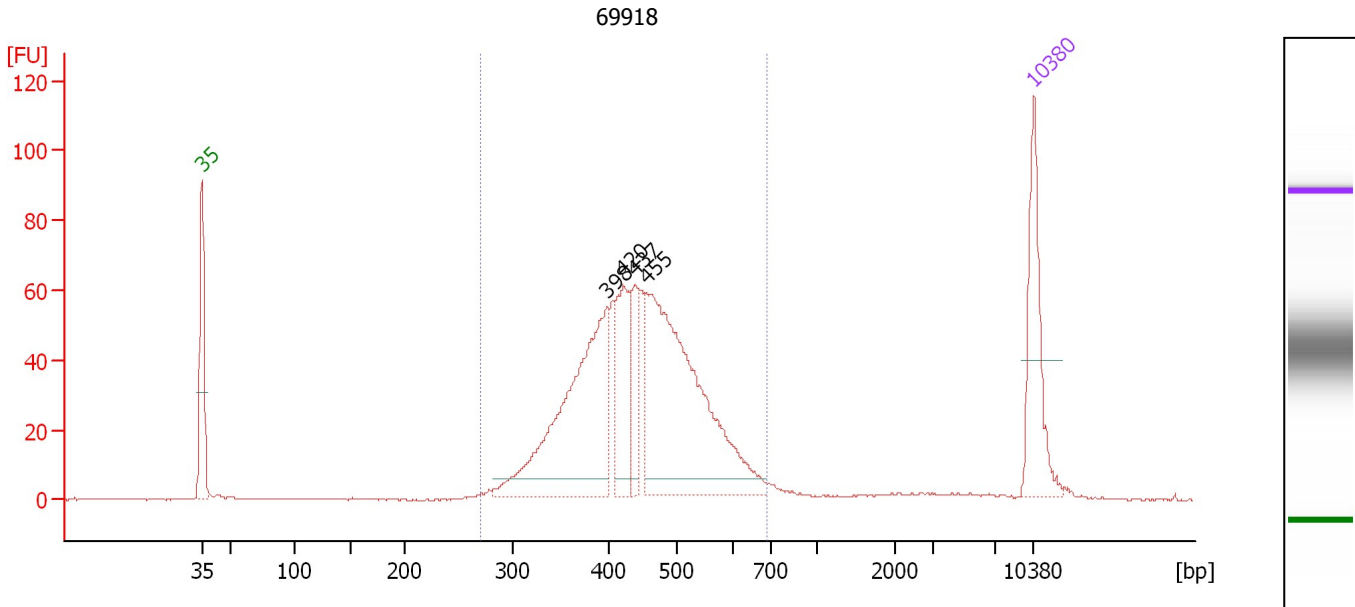
Peak table for Ladder

Peak	Size [bp]	Conc. [pg/μl]	Molarity [pmol/l]	Observations
1	35	125.00	5,411.3	Lower Marker
2	50	150.00	4,545.5	Ladder Peak
3	100	150.00	2,272.7	Ladder Peak
4	150	150.00	1,515.2	Ladder Peak
5	200	150.00	1,136.4	Ladder Peak
6	300	150.00	757.6	Ladder Peak
7	400	150.00	568.2	Ladder Peak
8	500	150.00	454.5	Ladder Peak
9	600	150.00	378.8	Ladder Peak
10	700	150.00	324.7	Ladder Peak
11	1,000	150.00	227.3	Ladder Peak
12	2,000	150.00	113.6	Ladder Peak
13	3,000	150.00	75.8	Ladder Peak
14	7,000	150.00	32.5	Ladder Peak
15	10,380	75.00	10.9	Upper Marker

Assay Class: High Sensitivity DNA Assay
 Data Path: C:\...ents and Settings\Bioanalyzer\2014-09-15\2014-09-15_002.xad

Created: 9/15/2014 11:27:51 AM
 Modified: 9/15/2014 12:09:06 PM

Electropherogram Summary Continued ...



Overall Results for sample 1 : 69918

Number of peaks found: 4 Corr. Area 1: 951.8
 Noise: 0.2

Peak table for sample 1 : 69918

Peak	Size [bp]	Conc. [pg/μl]	Molarity [pmol/l]	Observations
1	35	125.00	5,411.3	Lower Marker
2	398	280.94	1,070.2	
3	420	88.76	319.8	
4	437	51.05	177.0	
5	455	354.55	1,180.2	
6	10,380	75.00	10.9	Upper Marker

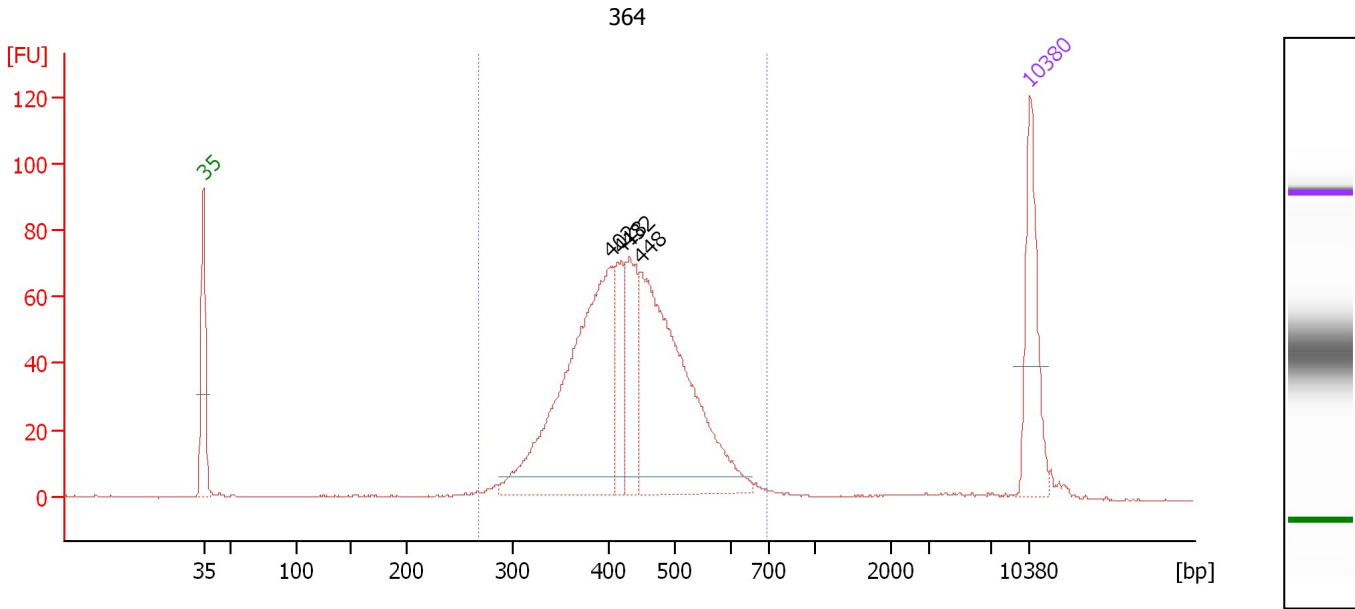
Region table for sample 1 : 69918

From [bp]	Average Size [bp]	To [bp]	Corr. Area	% of Total	Size distribution in CV [%]	Conc. [pg/μl]	Molarity [pmol/l]	Color
270	445	691	951.8	95	17.7	878.05	3,114.3	Blue

Assay Class: High Sensitivity DNA Assay
 Data Path: C:\...ents and Settings\Bioanalyzer\2014-09-15\2014-09-15_002.xad

Created: 9/15/2014 11:27:51 AM
 Modified: 9/15/2014 12:09:06 PM

Electropherogram Summary Continued ...



Overall Results for sample 2 : 364

Number of peaks found: 4 Corr. Area 1: 1,054.2
 Noise: 0.2

Peak table for sample 2 : 364

Peak	Size [bp]	Conc. [pg/μl]	Molarity [pmol/l]	Observations
1	35	125.00	5,411.3	Lower Marker
2	402	363.58	1,369.4	
3	418	63.14	228.8	
4	432	93.58	328.5	
5	448	333.99	1,130.8	
6	10,380	75.00	10.9	Upper Marker

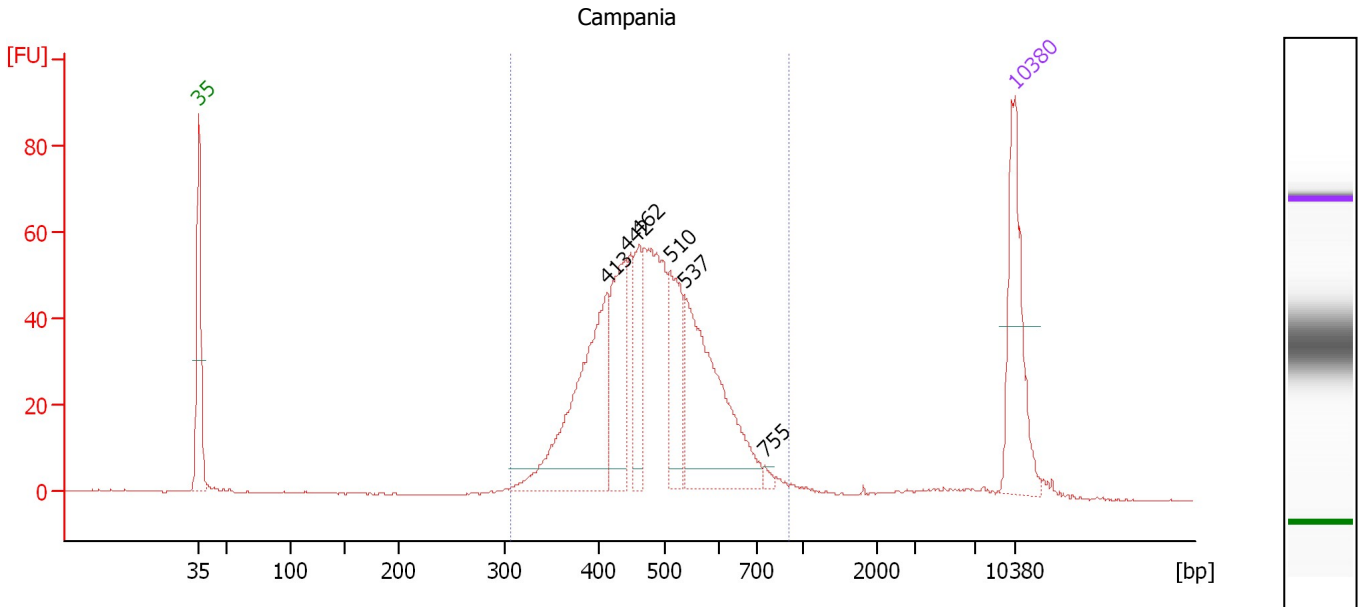
Region table for sample 2 : 364

From [bp]	Average Size [bp]	To [bp]	Corr. Area	% of Total	Size distribution in CV [%]	Conc. [pg/μl]	Molarity [pmol/l]	Color
268	435	697	1,054.2	95	17.0	907.49	3,282.9	Blue

Assay Class: High Sensitivity DNA Assay
 Data Path: C:\...ents and Settings\Bioanalyzer\2014-09-15\2014-09-15_002.xad

Created: 9/15/2014 11:27:51 AM
 Modified: 9/15/2014 12:09:06 PM

Electropherogram Summary Continued ...



Overall Results for sample 3 : Campania

Number of peaks found: 6 Corr. Area 1: 859.0
 Noise: 0.1

Peak table for sample 3 : Campania

Peak	Size [bp]	Conc. [pg/μl]	Molarity [pmol/l]	Observations
1	35	125.00	5,411.3	Lower Marker
2	413	182.83	670.1	
3	442	91.70	314.7	
4	462	51.24	168.2	
5	510	72.53	215.4	
6	537	172.92	488.3	
7	755	3.57	7.2	
8	10,380	75.00	10.9	Upper Marker

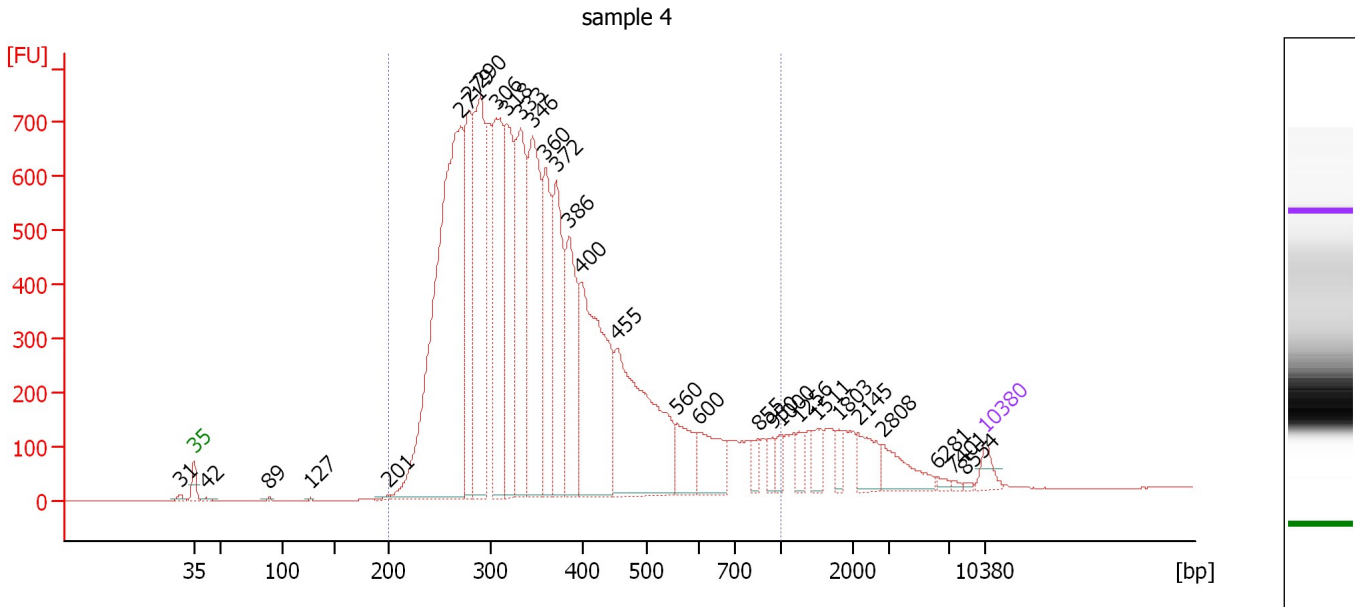
Region table for sample 3 : Campania

From [bp]	Average Size [bp]	To [bp]	Corr. Area	% of Total	Size distribution in CV [%]	Conc. [pg/μl]	Molarity [pmol/l]	Color
307	488	916	859.0	96	18.8	789.54	2,560.9	Blue

Assay Class: High Sensitivity DNA Assay
 Data Path: C:\...ents and Settings\Bioanalyzer\2014-09-15\2014-09-15_002.xad

Created: 9/15/2014 11:27:51 AM
 Modified: 9/15/2014 12:09:06 PM

Electropherogram Summary Continued ...



Overall Results for sample 4 : sample 4

Number of peaks found: 30 Corr. Area 1: 15,735.1
 Noise: 0.1

Peak table for sample 4 : sample 4

Peak	Size [bp]	Conc. [pg/μl]	Molarity [pmol/l]	Observations
1	31	0.00	0.0	
2	35	125.00	5,411.3	Lower Marker
3	42	20.70	747.0	
4	89	9.16	155.1	
5	127	7.02	83.9	
6	201	17.69	133.4	
7	271	3,874.64	21,629.6	
8	279	1,018.98	5,540.2	
9	290	1,641.40	8,573.7	
10	306	1,353.83	6,709.0	
11	318	1,060.55	5,052.8	
12	333	1,204.53	5,486.7	
13	346	1,362.70	5,966.1	
14	360	824.96	3,471.1	
15	372	916.62	3,729.7	
16	386	802.84	3,148.2	
17	400	1,419.38	5,378.7	
18	455	1,454.37	4,840.4	
19	560	272.88	738.8	
20	600	317.63	801.9	
21	855	88.93	157.7	
22	950	81.43	129.8	
23	1,000	72.77	110.3	
24	1,256	87.94	106.1	
25	1,511	116.25	116.6	
26	1,803	63.44	53.3	

Assay Class: High Sensitivity DNA Assay
 Data Path: C:\...ents and Settings\Bioanalyzer\2014-09-15\2014-09-15_002.xad


Created: 9/15/2014 11:27:51 AM
 Modified: 9/15/2014 12:09:06 PM

Electropherogram Summary Continued ...

... Peak table for sample 4 : sample 4

Peak	Size [bp]	Conc. [pg/μl]	Molarity [pmol/l]	Observations
27	2,145	169.75	119.9	
28	2,808	195.12	105.3	
29	6,281	21.63	5.2	
30	7,401	12.27	2.5	
31	8,554	8.90	1.6	
32	10,380	75.00	10.9	Upper Marker

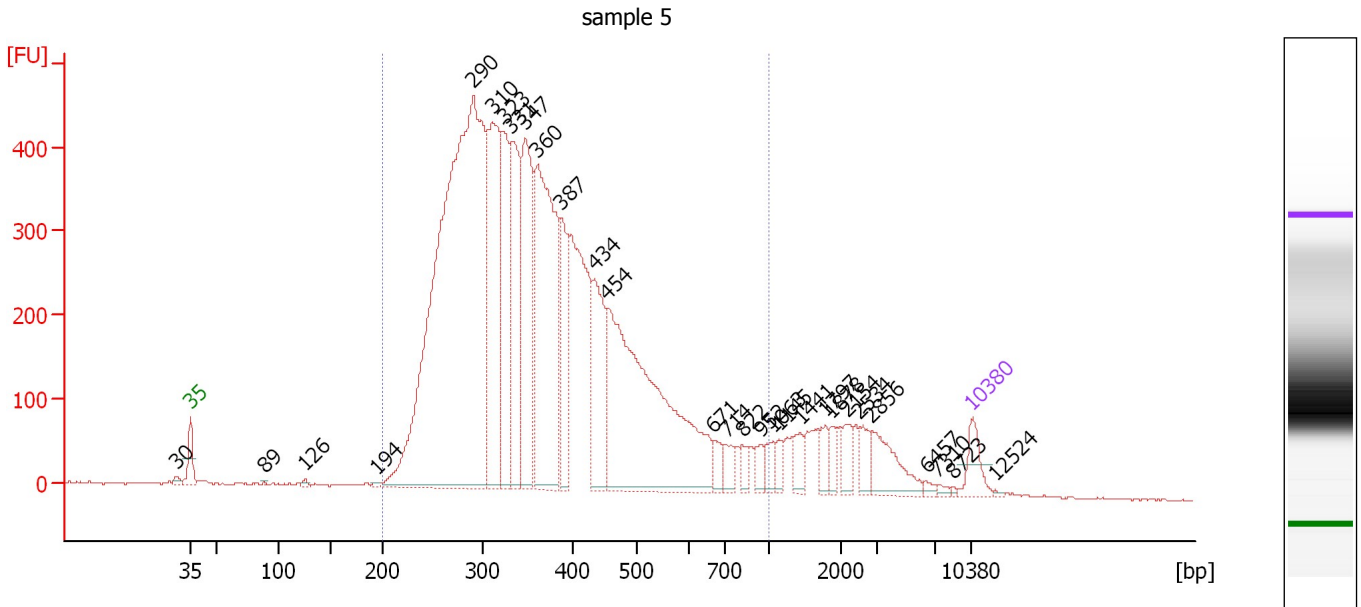
Region table for sample 4 : sample 4

From [bp]	Average Size [bp]	To [bp]	Corr. Area	% of Total	Size distribution in CV [%]	Conc. [pg/μl]	Molarity [pmol/l]	Color
200	372	1,000	15,735.1	92	35.0	18,591.12	85,066.5	

Assay Class: High Sensitivity DNA Assay
 Data Path: C:\...ents and Settings\Bioanalyzer\2014-09-15\2014-09-15_002.xad

Created: 9/15/2014 11:27:51 AM
 Modified: 9/15/2014 12:09:06 PM

Electropherogram Summary Continued ...



Overall Results for sample 5 : sample 5

Number of peaks found: 29 Corr. Area 1: 10,295.3
 Noise: 1.4

Peak table for sample 5 : sample 5

Peak	Size [bp]	Conc. [pg/μl]	Molarity [pmol/l]	Observations
1	30	0.00	0.0	
2	35	125.00	5,411.3	Lower Marker
3	89	5.96	101.4	
4	126	11.52	138.6	
5	194	10.18	79.4	
6	290	3,754.05	19,623.2	
7	310	808.69	3,946.3	
8	323	551.75	2,588.7	
9	331	582.06	2,662.4	
10	347	662.86	2,897.2	
11	360	1,117.63	4,700.1	
12	387	317.08	1,241.5	
13	434	381.04	1,331.5	
14	454	1,481.91	4,948.2	
15	671	55.58	125.4	
16	714	57.58	122.2	
17	822	40.47	74.6	
18	952	43.11	68.6	
19	1,063	51.35	73.2	
20	1,145	37.99	50.3	
21	1,441	50.82	53.4	
22	1,797	56.05	47.3	
23	1,878	42.04	33.9	
24	2,154	59.11	41.6	
25	2,534	53.51	32.0	
26	2,856	145.17	77.0	

Assay Class: High Sensitivity DNA Assay
 Data Path: C:\...ents and Settings\Bioanalyzer\2014-09-15\2014-09-15_002.xad


Created: 9/15/2014 11:27:51 AM
 Modified: 9/15/2014 12:09:06 PM

Electropherogram Summary Continued ...

... Peak table for sample 5 : sample 5

Peak	Size [bp]	Conc. [pg/μl]	Molarity [pmol/l]	Observations
27	6,457	12.42	2.9	
28	7,310	9.32	1.9	
29	8,723	3.96	0.7	
30	10,380	75.00	10.9	Upper Marker
31	12,524	0.00	0.0	

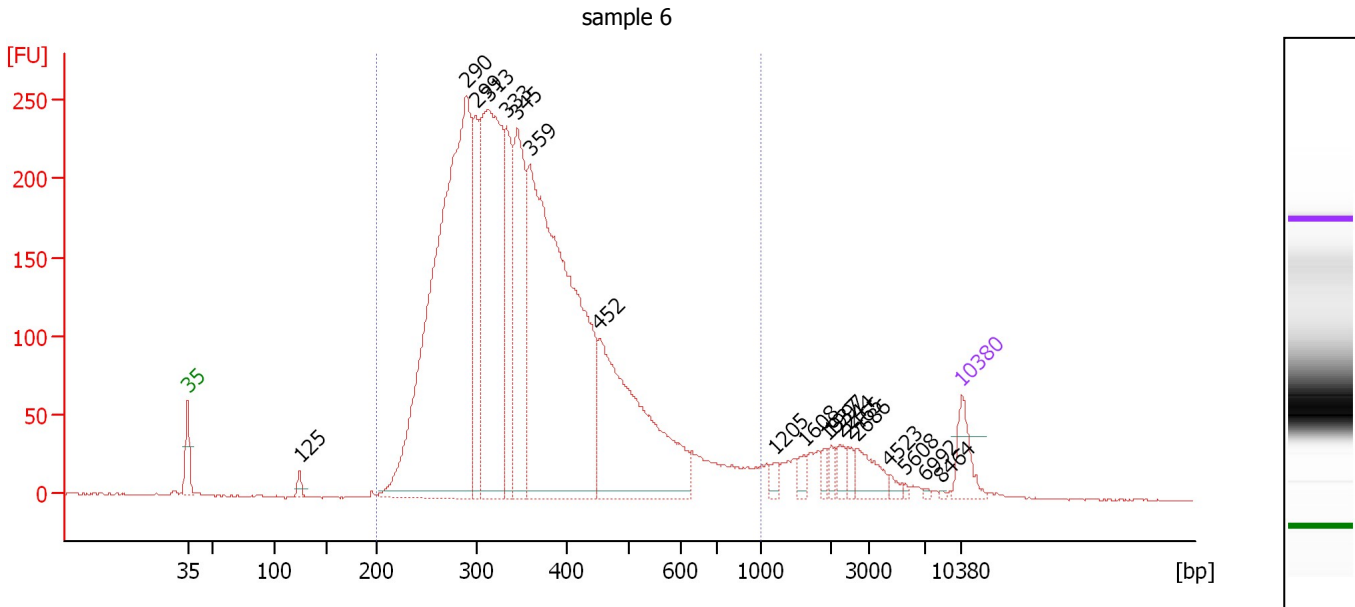
Region table for sample 5 : sample 5

From [bp]	Average Size [bp]	To [bp]	Corr. Area	% of Total	Size distribution in CV [%]	Conc. [pg/μl]	Molarity [pmol/l]	Color
200	380	1,000	10,295.3	91	33.3	10,713.04	47,888.1	

Assay Class: High Sensitivity DNA Assay
 Data Path: C:\...ents and Settings\Bioanalyzer\2014-09-15\2014-09-15_002.xad

Created: 9/15/2014 11:27:51 AM
 Modified: 9/15/2014 12:09:06 PM

Electropherogram Summary Continued ...



Overall Results for sample 6 : sample 6

Number of peaks found: 19 Corr. Area 1: 5,164.3
 Noise: 0.5

Peak table for sample 6 : sample 6

Peak	Size [bp]	Conc. [pg/μl]	Molarity [pmol/l]	Observations
1	35	125.00	5,411.3	Lower Marker
2	125	26.52	322.2	
3	290	2,320.67	12,145.4	
4	299	342.49	1,738.3	
5	313	1,172.99	5,684.2	
6	333	347.54	1,581.3	
7	345	566.66	2,489.1	
8	359	1,935.26	8,174.9	
9	452	846.61	2,835.4	
10	1,205	21.23	26.7	
11	1,608	24.99	23.5	
12	1,937	19.97	15.6	
13	1,997	22.11	16.8	
14	2,244	28.90	19.5	
15	2,465	22.94	14.1	
16	2,686	72.53	40.9	
17	4,523	13.76	4.6	
18	5,608	5.31	1.4	
19	6,992	3.57	0.8	
20	8,464	3.06	0.5	
21	10,380	75.00	10.9	Upper Marker

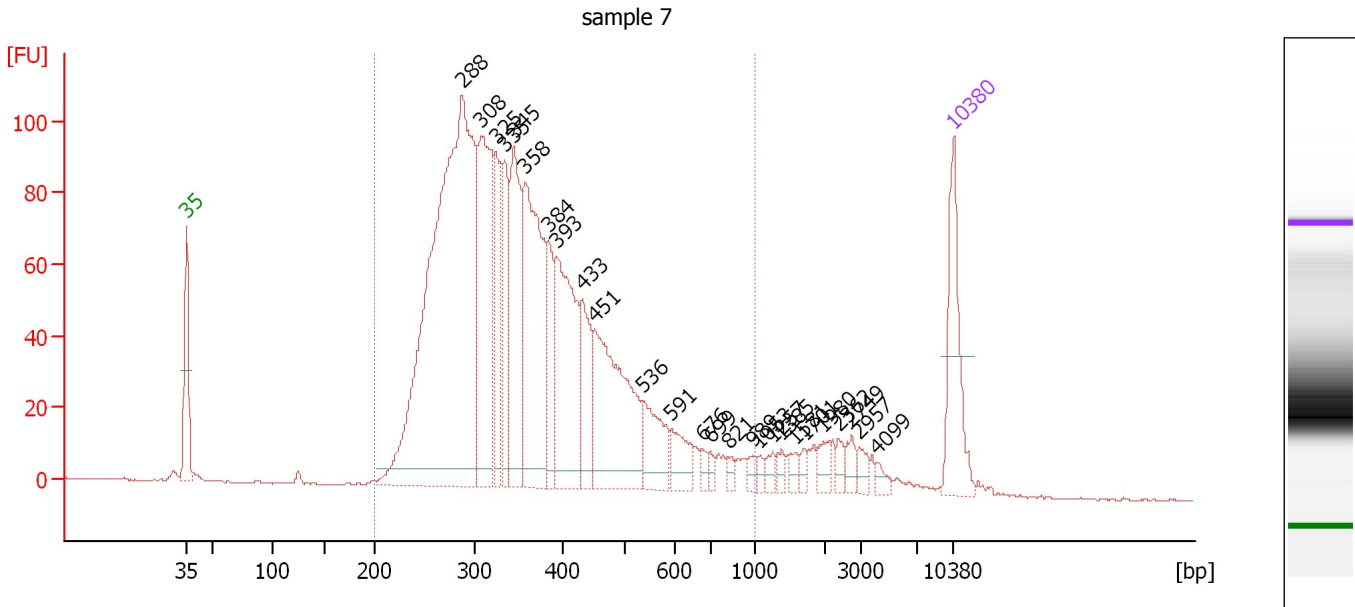
Region table for sample 6 : sample 6

From [bp]	Average Size [bp]	To [bp]	Corr. Area	% of Total	Size distribution in CV [%]	Conc. [pg/μl]	Molarity [pmol/l]	Color
200	368	1,000	5,164.3	93	30.9	7,599.33	34,461.3	Blue

Assay Class: High Sensitivity DNA Assay
 Data Path: C:\...ents and Settings\Bioanalyzer\2014-09-15\2014-09-15_002.xad

Created: 9/15/2014 11:27:51 AM
 Modified: 9/15/2014 12:09:06 PM

Electropherogram Summary Continued ...



Overall Results for sample 7 : sample 7

Number of peaks found: 26 Corr. Area 1: 2,172.0
 Noise: 0.2

Peak table for sample 7 : sample 7

Peak	Size [bp]	Conc. [pg/μl]	Molarity [pmol/l]	Observations
1	35	125.00	5,411.3	Lower Marker
2	288	858.03	4,509.8	
3	308	239.24	1,175.1	
4	325	92.54	431.7	
5	335	87.70	396.6	
6	345	163.60	717.9	
7	358	247.74	1,048.7	
8	384	67.65	267.0	
9	393	185.01	713.5	
10	433	74.52	261.0	
11	451	198.47	666.0	
12	536	61.76	174.7	
13	591	34.31	87.9	
14	676	8.22	18.4	
15	699	7.04	15.3	
16	821	7.74	14.3	
17	989	7.33	11.2	
18	1,053	6.42	9.2	
19	1,257	8.22	9.9	
20	1,385	8.05	8.8	
21	1,581	8.56	8.2	
22	1,701	6.33	5.6	
23	1,980	12.14	9.3	
24	2,362	8.30	5.3	
25	2,749	11.14	6.1	
26	2,957	10.09	5.2	

Assay Class: High Sensitivity DNA Assay
Data Path: C:\...ents and Settings\Bioanalyzer\2014-09-15\2014-09-15_002.xad

Created: 9/15/2014 11:27:51 AM
Modified: 9/15/2014 12:09:06 PM

Electropherogram Summary Continued ...**... Peak table for sample 7 : sample 7**

Peak	Size [bp]	Conc. [pg/ μ l]	Molarity [pmol/l]	Observations
27	4,099	6.71	2.5	
28	▶ 10,380	75.00	10.9	Upper Marker

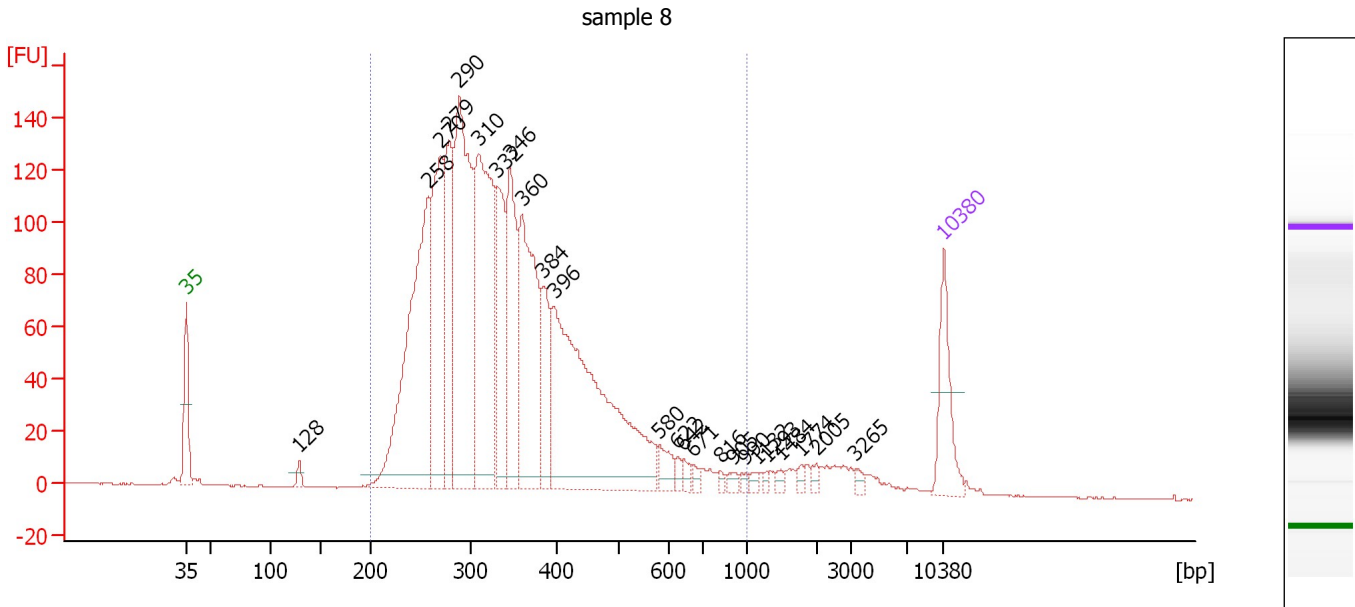
Region table for sample 7 : sample 7

From [bp]	Average Size [bp]	To [bp]	Corr. Area	% of Total	Size distribution in CV [%]	Conc. [pg/ μ l]	Molarity [pmol/l]	Color
200	373	1,000	2,172.0	92	32.1	2,401.37	10,826.2	■

Assay Class: High Sensitivity DNA Assay
 Data Path: C:\...ents and Settings\Bioanalyzer\2014-09-15\2014-09-15_002.xad

Created: 9/15/2014 11:27:51 AM
 Modified: 9/15/2014 12:09:06 PM

Electropherogram Summary Continued ...



Overall Results for sample 8 : sample 8

Number of peaks found: 24 Corr. Area 1: 2,770.9
 Noise: 0.2


Peak table for sample 8 : sample 8

Peak	Size [bp]	Conc. [pg/μl]	Molarity [pmol/l]	Observations
1	35	125.00	5,411.3	Lower Marker
2	128	12.64	149.5	
3	258	533.33	3,129.6	
4	270	296.37	1,662.5	
5	279	211.59	1,147.7	
6	290	486.41	2,544.8	
7	310	422.21	2,061.8	
8	332	171.33	782.8	
9	346	208.66	912.9	
10	360	302.75	1,273.0	
11	384	95.61	377.1	
12	396	574.29	2,195.2	
13	580	28.03	73.3	
14	622	9.62	23.4	
15	642	10.43	24.6	
16	671	10.11	22.8	
17	816	5.71	10.6	
18	905	8.32	13.9	
19	990	5.67	8.7	
20	1,132	6.51	8.7	
21	1,293	4.85	5.7	
22	1,484	6.46	6.6	
23	1,774	6.08	5.2	
24	2,005	7.77	5.9	
25	3,265	7.03	3.3	
26	10,380	75.00	10.9	Upper Marker

Assay Class: High Sensitivity DNA Assay
Data Path: C:\...ents and Settings\Bioanalyzer\2014-09-15\2014-09-15_002.xad

Created: 9/15/2014 11:27:51 AM
Modified: 9/15/2014 12:09:06 PM

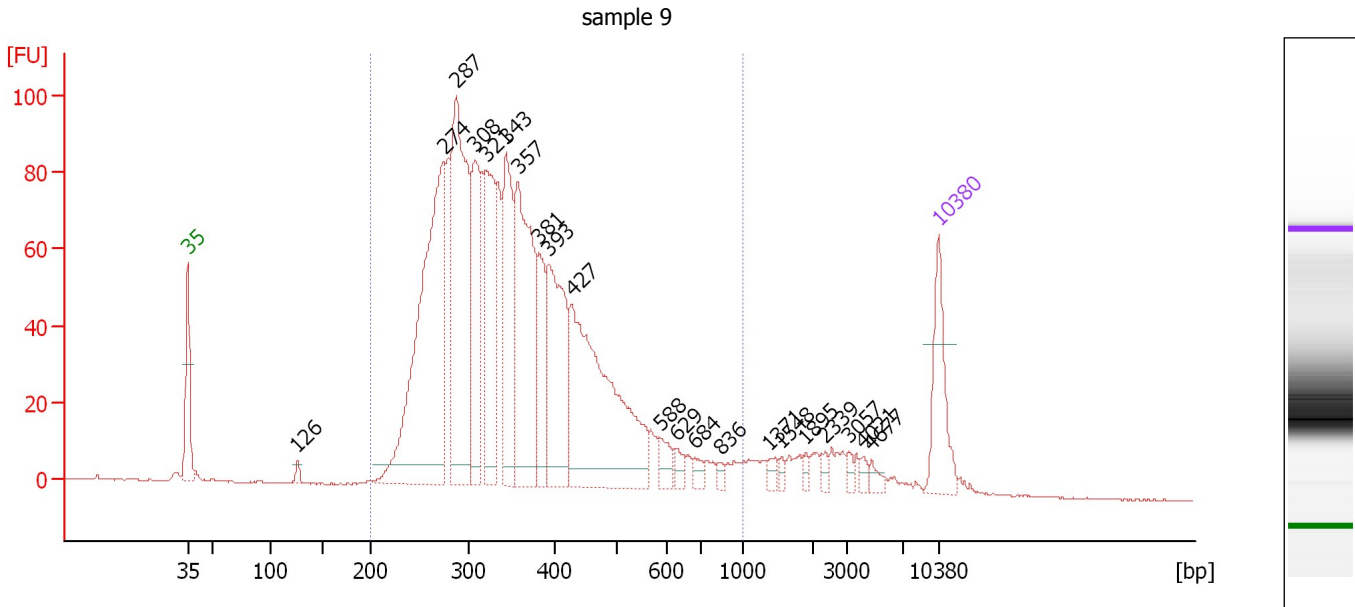
Electropherogram Summary Continued ...**... Region table for sample 8 : sample 8**

From [bp]	Average Size [bp]	To [bp]	Corr. Area	% of Total	Size distribution in CV [%]	Conc. [pg/μl]	Molarity [pmol/l]	Co lor
200	353	1,000	2,770.9	95	30.7	3,418.81	16,123.7	

Assay Class: High Sensitivity DNA Assay
 Data Path: C:\...ents and Settings\Bioanalyzer\2014-09-15\2014-09-15_002.xad

Created: 9/15/2014 11:27:51 AM
 Modified: 9/15/2014 12:09:06 PM

Electropherogram Summary Continued ...



Overall Results for sample 9 : sample 9

Number of peaks found: 21 Corr. Area 1: 1,890.2
 Noise: 0.2

Peak table for sample 9 : sample 9


Peak	Size [bp]	Conc. [pg/μl]	Molarity [pmol/l]	Observations
1	35	125.00	5,411.3	Lower Marker
2	126	9.35	112.5	
3	274	572.23	3,158.6	
4	287	415.18	2,191.4	
5	308	184.32	908.0	
6	321	191.64	905.9	
7	343	189.66	837.1	
8	357	316.96	1,345.8	
9	381	93.01	370.0	
10	393	213.28	823.2	
11	427	401.31	1,424.0	
12	588	22.88	59.0	
13	629	13.96	33.6	
14	684	12.92	28.6	
15	836	7.33	13.3	
16	1,371	8.90	9.8	
17	1,548	6.35	6.2	
18	1,895	6.69	5.4	
19	2,339	7.28	4.7	
20	3,057	7.17	3.6	
21	4,021	7.54	2.8	
22	4,677	9.25	3.0	
23	10,380	75.00	10.9	Upper Marker

Assay Class: High Sensitivity DNA Assay
Data Path: C:\...ents and Settings\Bioanalyzer\2014-09-15\2014-09-15_002.xad

Created: 9/15/2014 11:27:51 AM
Modified: 9/15/2014 12:09:06 PM

Electropherogram Summary Continued ...

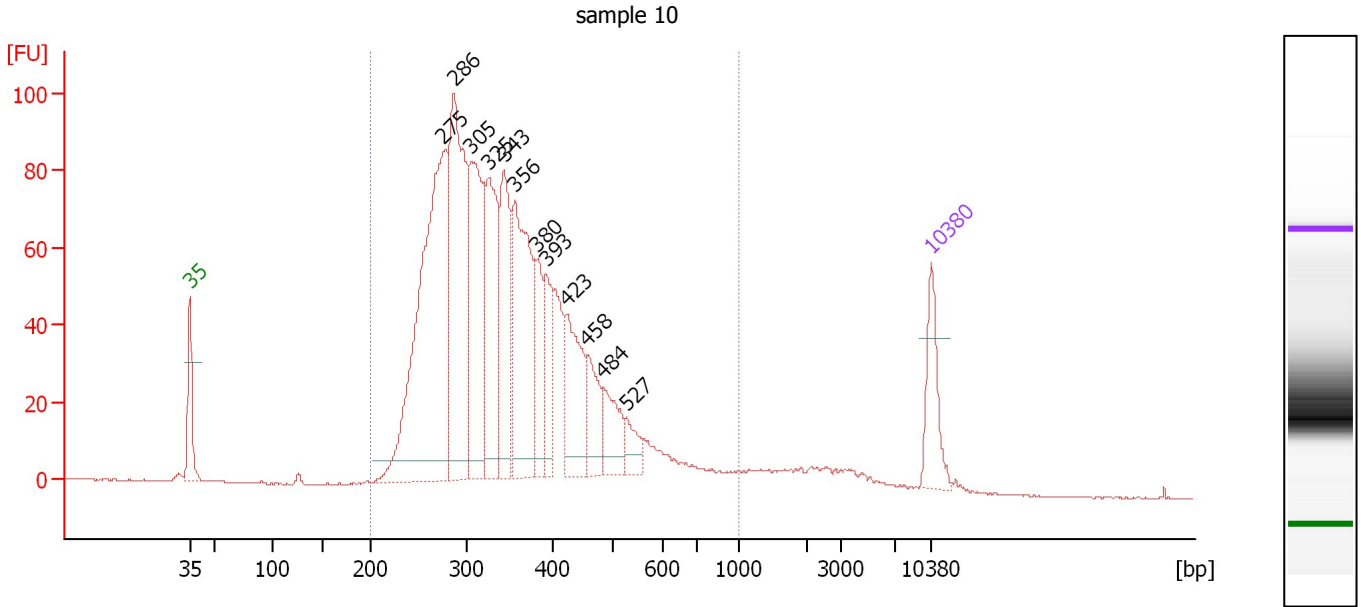
... Region table for sample 9 : sample 9

From [bp]	Average Size [bp]	To [bp]	Corr. Area	% of Total	Size distribution in CV [%]	Conc. [pg/ μ l]	Molarity [pmol/l]	Color
200	368	1,000	1,890.2	93	31.4	2,994.18	13,611.1	

Assay Class: High Sensitivity DNA Assay
 Data Path: C:\...ents and Settings\Bioanalyzer\2014-09-15\2014-09-15_002.xad

Created: 9/15/2014 11:27:51 AM
 Modified: 9/15/2014 12:09:06 PM

Electropherogram Summary Continued ...



Overall Results for sample 10 : sample 10

Number of peaks found: 12 Corr. Area 1: 1,791.9
 Noise: 0.2

Peak table for sample 10 : sample 10

Peak	Size [bp]	Conc. [pg/μl]	Molarity [pmol/l]	Observations
1	35	125.00	5,411.3	Lower Marker
2	275	782.42	4,314.5	
3	286	499.60	2,643.1	
4	305	339.13	1,686.7	
5	325	263.70	1,228.5	
6	343	212.62	940.0	
7	356	352.23	1,497.2	
8	380	104.01	414.5	
9	393	105.93	408.8	
10	423	163.66	585.9	
11	458	85.79	284.0	
12	484	80.89	253.1	
13	527	39.42	113.3	
14	10,380	75.00	10.9	Upper Marker

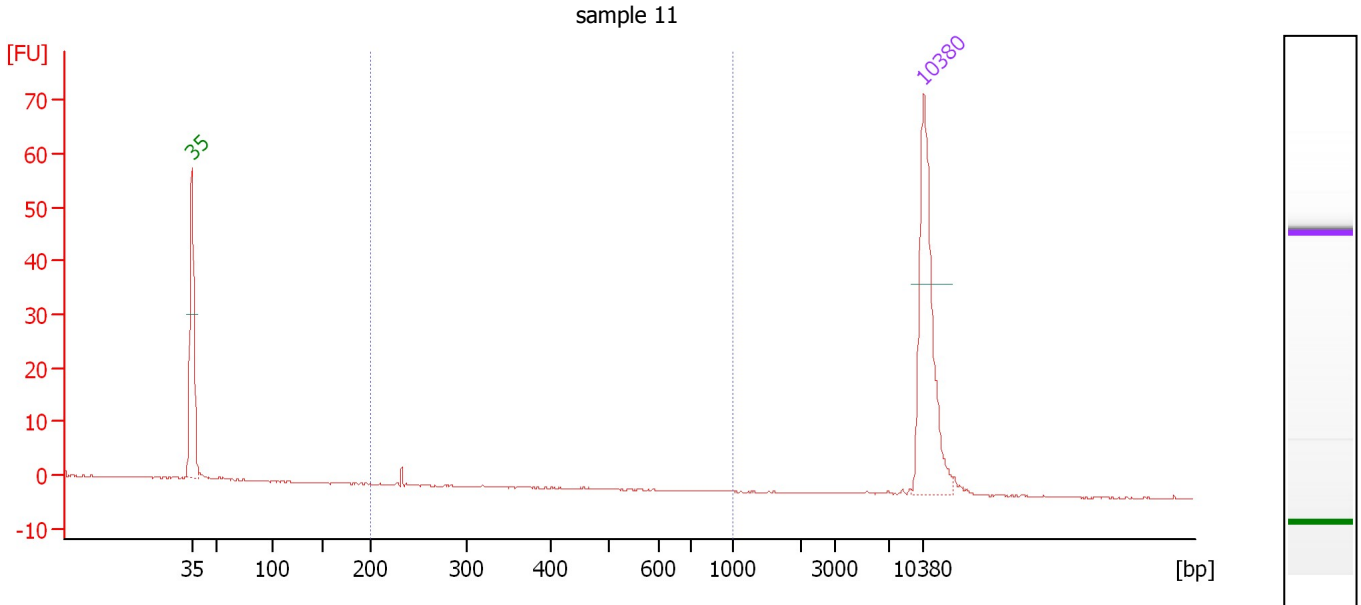
Region table for sample 10 : sample 10

From [bp]	Average Size [bp]	To [bp]	Corr. Area	% of Total	Size distribution in CV [%]	Conc. [pg/μl]	Molarity [pmol/l]	Color
200	360	1,000	1,791.9	95	29.5	3,437.81	15,836.7	Blue

Assay Class: High Sensitivity DNA Assay
 Data Path: C:\...ents and Settings\Bioanalyzer\2014-09-15\2014-09-15_002.xad

Created: 9/15/2014 11:27:51 AM
 Modified: 9/15/2014 12:09:06 PM

Electropherogram Summary Continued ...



Overall Results for sample 11 : sample 11

Number of peaks found: 0 Corr. Area 1: 0.8
 Noise: 0.1

Peak table for sample 11 : sample 11

Peak	Size [bp]	Conc. [pg/μl]	Molarity [pmol/l]	Observations
1	35	125.00	5,411.3	Lower Marker
2	10,380	75.00	10.9	Upper Marker

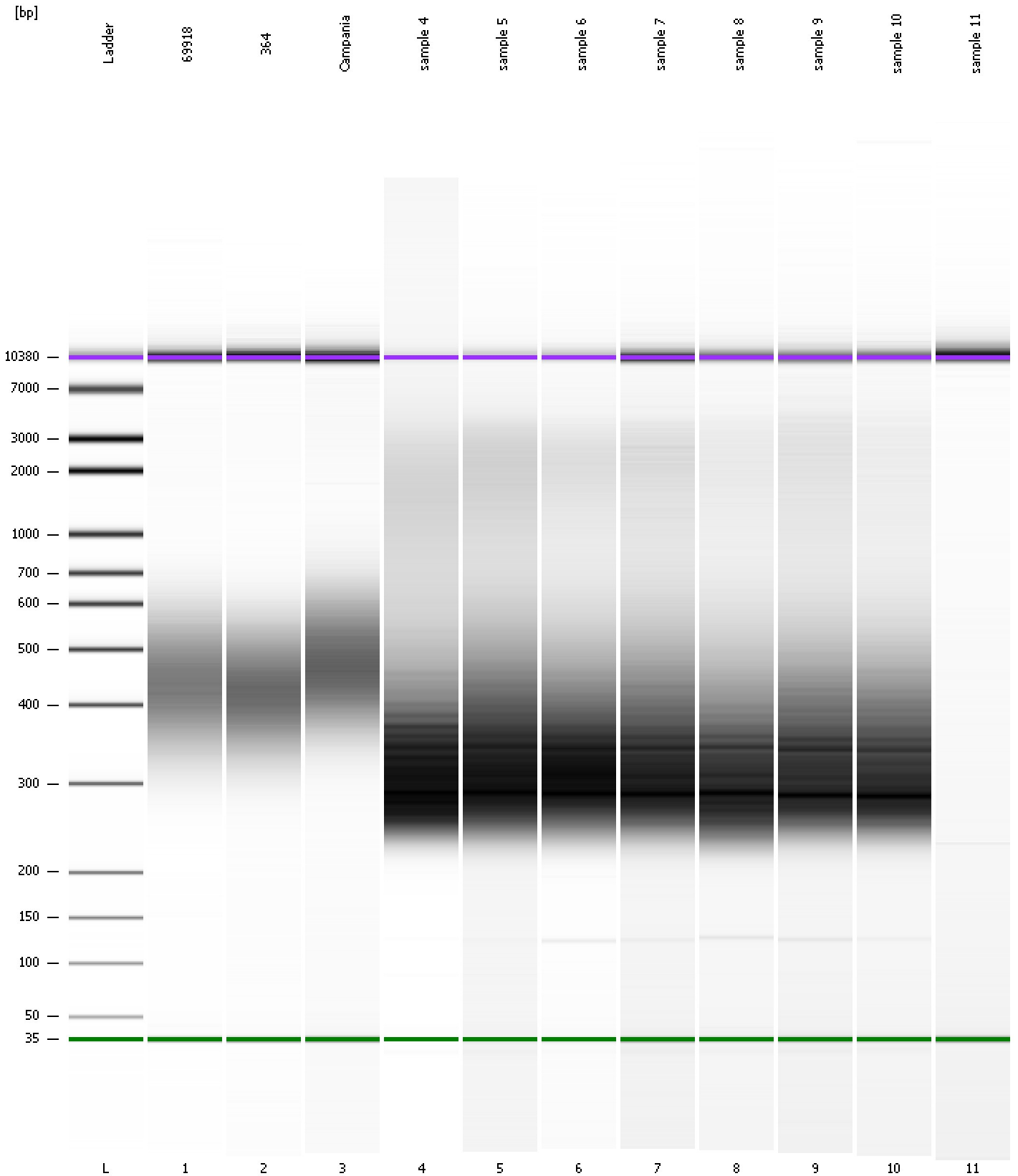
Region table for sample 11 : sample 11

From [bp]	Average Size [bp]	To [bp]	Corr. Area	% of Total	Size distribution in CV [%]	Conc. [pg/μl]	Molarity [pmol/l]	Color
200	233	1,000	0.8	11	0.3	1.14	7.4	Blue

Assay Class: High Sensitivity DNA Assay
Data Path: C:\...ents and Settings\Bioanalyzer\2014-09-15\2014-09-15_002.xad

Created: 9/15/2014 11:27:51 AM
Modified: 9/15/2014 12:09:06 PM

Gel Image



Assay Class: High Sensitivity DNA Assay
 Data Path: C:\...ents and Settings\Bioanalyzer\2014-09-15\2014-09-15_002.xad

Created: 9/15/2014 11:27:51 AM
 Modified: 9/15/2014 12:09:06 PM

Run Logbook

Description	Number	Source	Category	Sub Category	Time	Time Zone	User	Host
Run ended on port 1 (Number of wells acquired: 12)		Instrument	Run		9/15/2014 12:09:03 PM	(GMT --07:00) Pacific Standard Time	UC Davis	D8XSMGH1
Run started on port 1 (File: C:\Documents and Settings\Bioanalyzer\2014-09-15\2014-09-15_002.xad)		Instrument	Run		9/15/2014 11:27:51 AM	(GMT --07:00) Pacific Standard Time	UC Davis	D8XSMGH1
Product Number : G2938B		Instrument	Run		9/15/2014 11:27:51 AM	(GMT --07:00) Pacific Standard Time	UC Davis	D8XSMGH1
Name :		Instrument	Run		9/15/2014 11:27:51 AM	(GMT --07:00) Pacific Standard Time	UC Davis	D8XSMGH1
Vendor : Agilent Technologies		Instrument	Run		9/15/2014 11:27:51 AM	(GMT --07:00) Pacific Standard Time	UC Davis	D8XSMGH1
Serial# : DE13701086		Instrument	Run		9/15/2014 11:27:51 AM	(GMT --07:00) Pacific Standard Time	UC Davis	D8XSMGH1
Firmware : C.01.069		Instrument	Run		9/15/2014 11:27:51 AM	(GMT --07:00) Pacific Standard Time	UC Davis	D8XSMGH1
Cartridge : Electrode		Instrument	Run		9/15/2014 11:27:51 AM	(GMT --07:00) Pacific Standard Time	UC Davis	D8XSMGH1