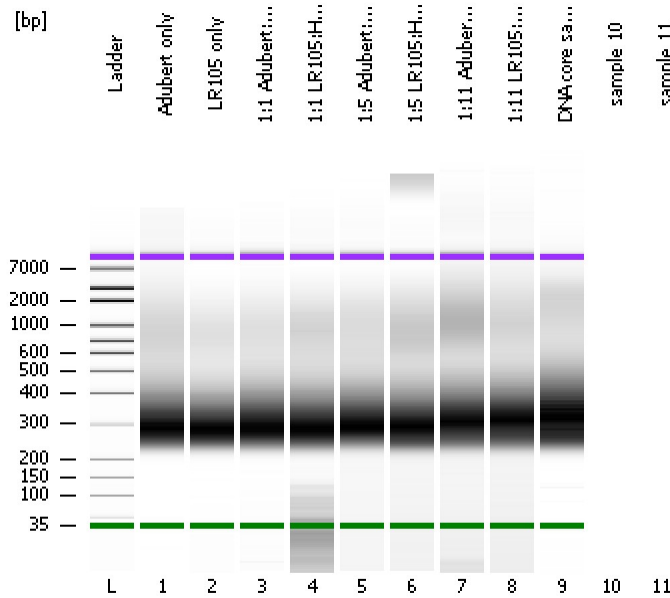


Assay Class: High Sensitivity DNA Assay
 Data Path: C:\...ents and Settings\Bioanalyzer\2014-09-16\2014-09-16_001.xad

Created: 9/16/2014 9:32:33 AM
 Modified: 9/16/2014 10:13:15 AM

Electrophoresis File Run Summary



Instrument Information:

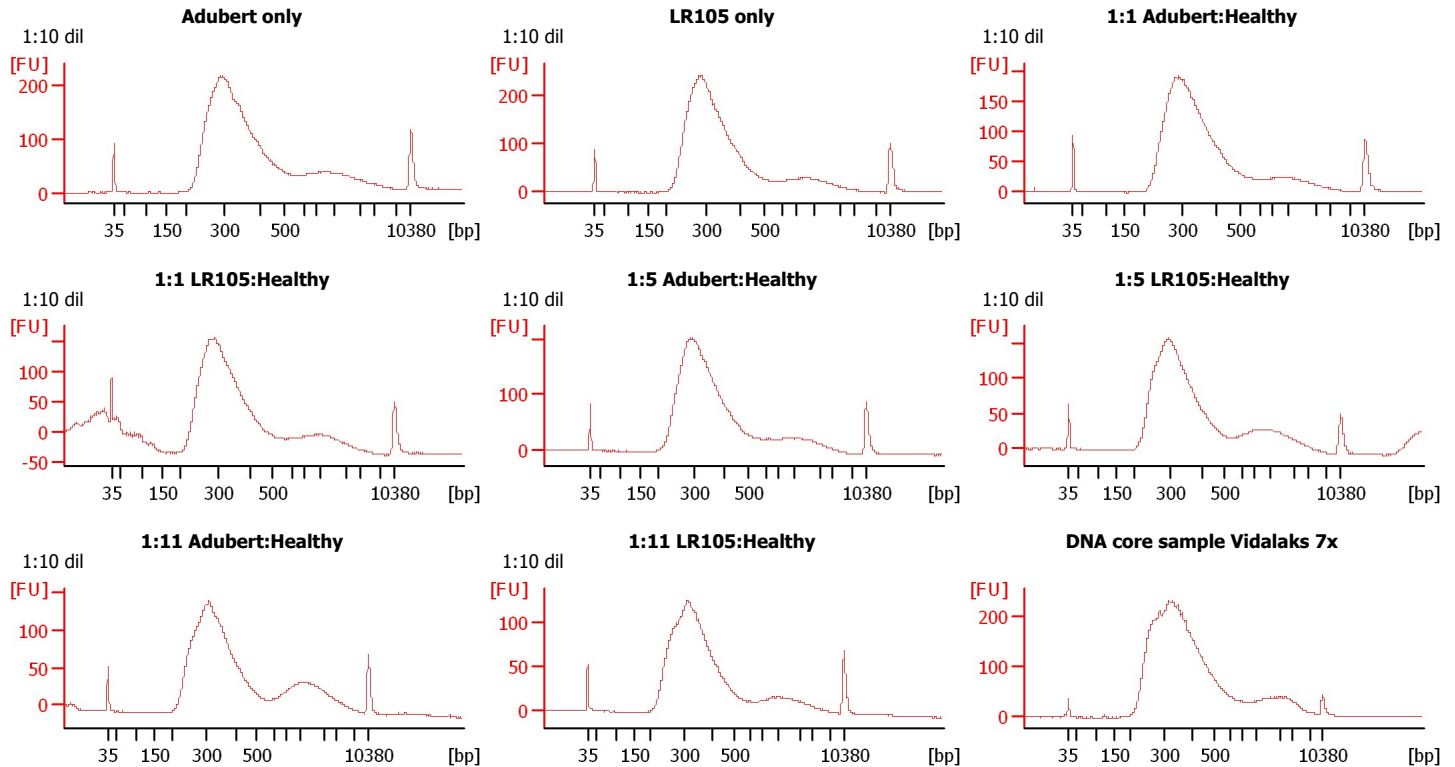
Instrument Name: DE13701086 Firmware: C.01.069
 Serial#: DE13701086 Type: G2938B

Assay Information:

Assay Origin Path: C:\Program Files\Agilent\2100 bioanalyzer\2100 expert\assays\dsDNA\High Sensitivity DNA.xsy
 Assay Class: High Sensitivity DNA Assay
 Version: 1.03
 Assay Comments: Copyright © 2003-2010 Agilent Technologies

Chip Information:

Chip Lot #:
 Reagent Kit Lot #:
 Chip Comments:



Assay Class: High Sensitivity DNA Assay
Data Path: C:\...ents and Settings\Bioanalyzer\2014-09-16\2014-09-16_001.xad

Created: 9/16/2014 9:32:33 AM
Modified: 9/16/2014 10:13:15 AM

Electrophoresis File Run Summary (Chip Summary)

Sample Name	Sample Comment	Rest. Digest	Status	Observation	Result Label	Result Color
Adubert only	1:10 dil	<input type="checkbox"/>	✓			
LR105 only	1:10 dil	<input type="checkbox"/>	✓			
1:1 Adubert:Healthy	1:10 dil	<input type="checkbox"/>	✓			
1:1 LR105:Healthy	1:10 dil	<input type="checkbox"/>	✓			
1:5 Adubert:Healthy	1:10 dil	<input type="checkbox"/>	✓			
1:5 LR105:Healthy	1:10 dil	<input type="checkbox"/>	✓			
1:11 Adubert:Healthy	1:10 dil	<input type="checkbox"/>	✓			
1:11 LR105:Healthy	1:10 dil	<input type="checkbox"/>	✓			
DNA core sample Vidalaks 7x sample 10		<input type="checkbox"/>	✓			
sample 11		<input type="checkbox"/>				
Ladder		<input type="checkbox"/>	✓			

Chip Lot #

Reagent Kit Lot #

Chip Comments :

Assay Class: High Sensitivity DNA Assay
Data Path: C:\...ents and Settings\Bioanalyzer\2014-09-16\2014-09-16_001.xad

Created: 9/16/2014 9:32:33 AM
Modified: 9/16/2014 10:13:15 AM

Electrophoresis Assay Details

General Analysis Settings

Number of Available Sample and Ladder Wells (Max.) : 12
Minimum Visible Range [s] : 32
Maximum Visible Range [s] : 138
Start Analysis Time Range [s] : 33
End Analysis Time Range [s] : 137.5
Ladder Concentration [pg/μl] : 1950
Uses Standard Area for Ladder Fragments
Lower Marker Concentration [pg/μl] : 125
Upper Marker Concentration [pg/μl] : 75
Used Upper Marker for Quantitation
Standard Curve Fit is Point to Point
Show Data Aligned to Lower and Upper Marker

Integrator Settings

Integration Start Time [s] : 33.05
Integration End Time [s] : 137
Slope Threshold : 0.8
Height Threshold [FU] : 5
Area Threshold : 0.1
Width Threshold [s] : 0.6
Baseline Plateau [s] : 0.5

Filter Settings

Filter Width [s] : 0.5
Polynomial Order : 4

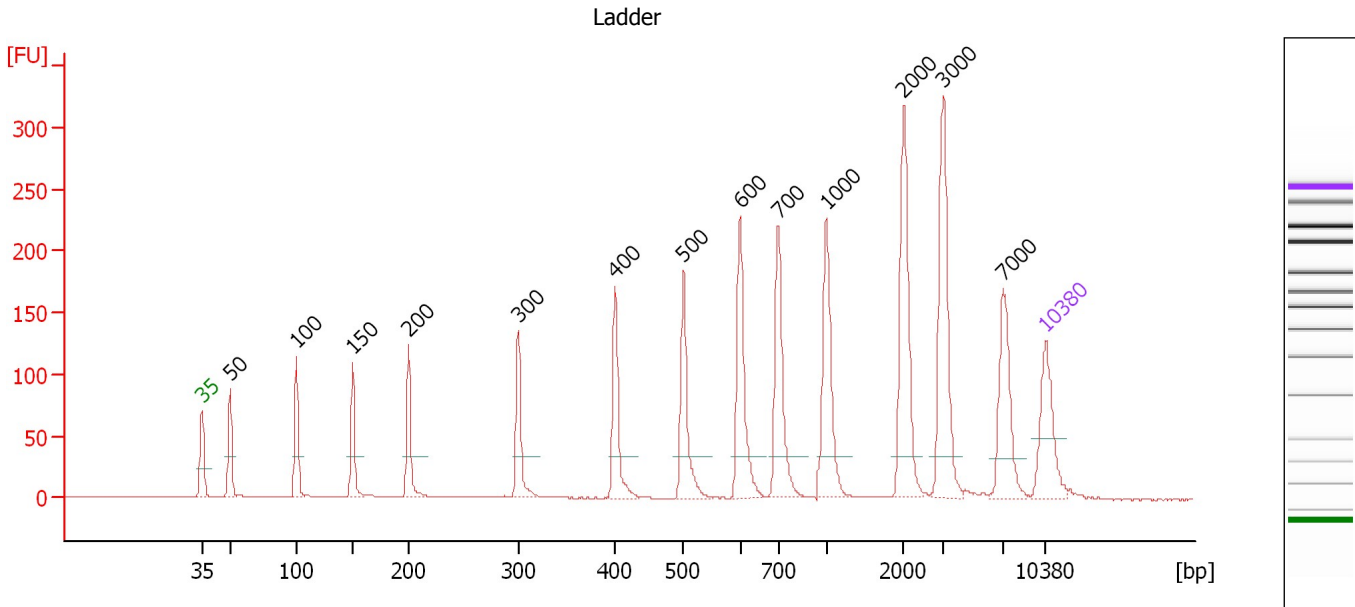
Ladder

Ladder Peak	Size	Area
1	35	160
2	50	210
3	100	208
4	150	221
5	200	242
6	300	270
7	400	305
8	500	306
9	600	336
10	700	321
11	1000	366
12	2000	413
13	3000	411
14	7000	400
15	10380	214

Assay Class: High Sensitivity DNA Assay
 Data Path: C:\...ents and Settings\Bioanalyzer\2014-09-16\2014-09-16_001.xad

Created: 9/16/2014 9:32:33 AM
 Modified: 9/16/2014 10:13:15 AM

Electropherogram Summary



Overall Results for Ladder

Noise: 0.2

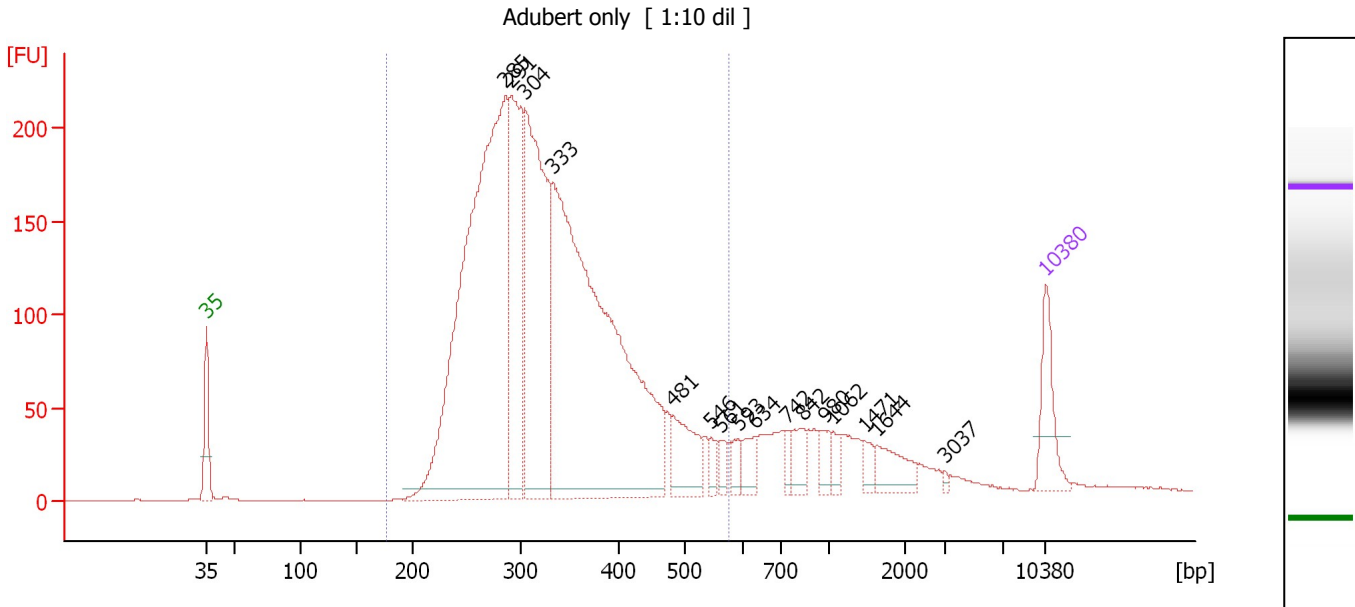
Peak table for Ladder

Peak	Size [bp]	Conc. [pg/µl]	Molarity [pmol/l]	Observations
1	35	125.00	5,411.3	Lower Marker
2	50	150.00	4,545.5	Ladder Peak
3	100	150.00	2,272.7	Ladder Peak
4	150	150.00	1,515.2	Ladder Peak
5	200	150.00	1,136.4	Ladder Peak
6	300	150.00	757.6	Ladder Peak
7	400	150.00	568.2	Ladder Peak
8	500	150.00	454.5	Ladder Peak
9	600	150.00	378.8	Ladder Peak
10	700	150.00	324.7	Ladder Peak
11	1,000	150.00	227.3	Ladder Peak
12	2,000	150.00	113.6	Ladder Peak
13	3,000	150.00	75.8	Ladder Peak
14	7,000	150.00	32.5	Ladder Peak
15	10,380	75.00	10.9	Upper Marker

Assay Class: High Sensitivity DNA Assay
 Data Path: C:\...ents and Settings\Bioanalyzer\2014-09-16\2014-09-16_001.xad

Created: 9/16/2014 9:32:33 AM
 Modified: 9/16/2014 10:13:15 AM

Electropherogram Summary Continued ...



Overall Results for sample 1 : Adubert only

Number of peaks found: 16 Corr. Area 1: 3,919.9
 Noise: 0.2

Peak table for sample 1 : Adubert only

Peak	Size [bp]	Conc. [pg/μl]	Molarity [pmol/l]	Observations
1	35	125.00	5,411.3	Lower Marker
2	285	1,449.94	7,700.5	
3	291	430.51	2,244.0	
4	304	656.25	3,272.2	
5	333	1,406.87	6,409.3	
6	481	110.56	348.4	
7	546	21.94	60.9	
8	561	23.50	63.5	
9	593	25.26	64.5	
10	634	39.72	95.0	
11	742	19.62	40.1	
12	842	40.40	72.7	
13	980	29.74	46.0	
14	1,062	21.83	31.1	
15	1,471	21.65	22.3	
16	1,644	54.58	50.3	
17	3,037	4.41	2.2	
18	10,380	75.00	10.9	Upper Marker

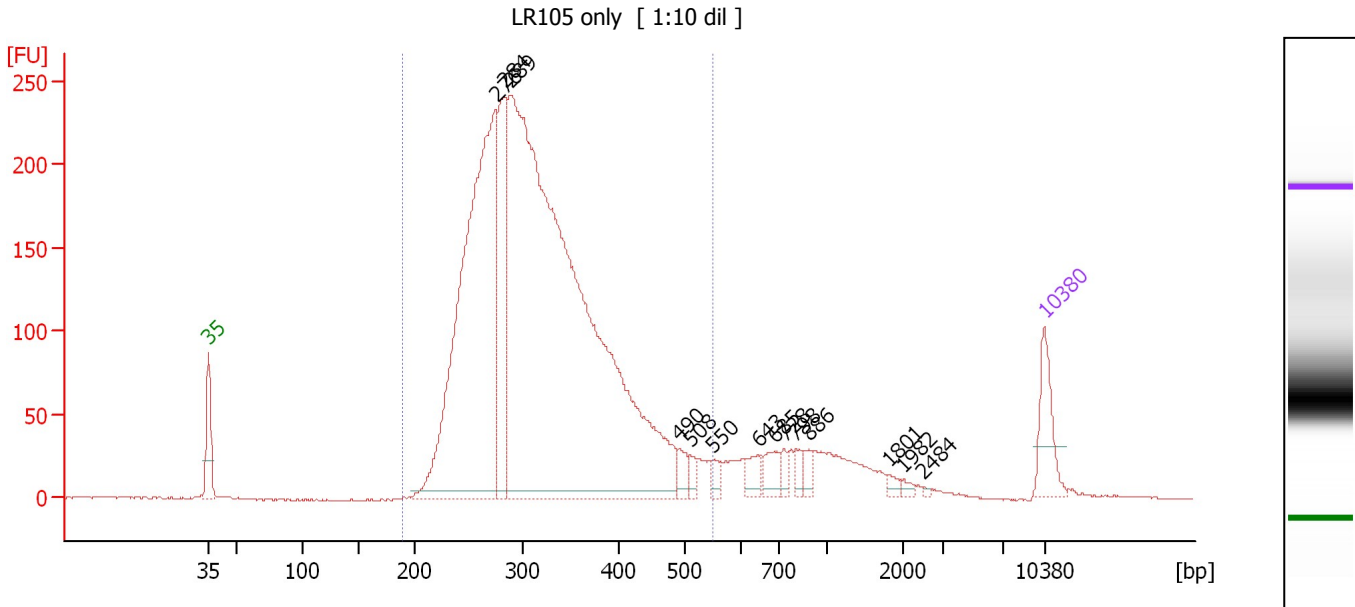
Region table for sample 1 : Adubert only

From [bp]	Average Size [bp]	To [bp]	Corr. Area	% of Total	Size distribution in CV [%]	Conc. [pg/μl]	Molarity [pmol/l]	Color
177	332	577	3,919.9	87	22.4	4,068.80	19,717.3	Blue

Assay Class: High Sensitivity DNA Assay
 Data Path: C:\...ents and Settings\Bioanalyzer\2014-09-16\2014-09-16_001.xad

Created: 9/16/2014 9:32:33 AM
 Modified: 9/16/2014 10:13:15 AM

Electropherogram Summary Continued ...



Overall Results for sample 2 : LR105 only

Number of peaks found: 14 Corr. Area 1: 4,019.1
 Noise: 0.5

Peak table for sample 2 : LR105 only

Peak	Size [bp]	Conc. [pg/μl]	Molarity [pmol/l]	Observations
1	35	125.00	5,411.3	Lower Marker
2	276	1,377.25	7,569.4	
3	284	354.28	1,893.0	
4	289	2,918.83	15,277.7	
5	490	33.97	105.0	
6	508	20.32	60.6	
7	550	22.58	62.2	
8	643	33.46	78.9	
9	685	39.97	88.4	
10	728	18.52	38.6	
11	798	19.27	36.6	
12	886	20.53	35.1	
13	1,801	10.65	9.0	
14	1,982	7.78	5.9	
15	2,484	3.08	1.9	
16	10,380	75.00	10.9	Upper Marker

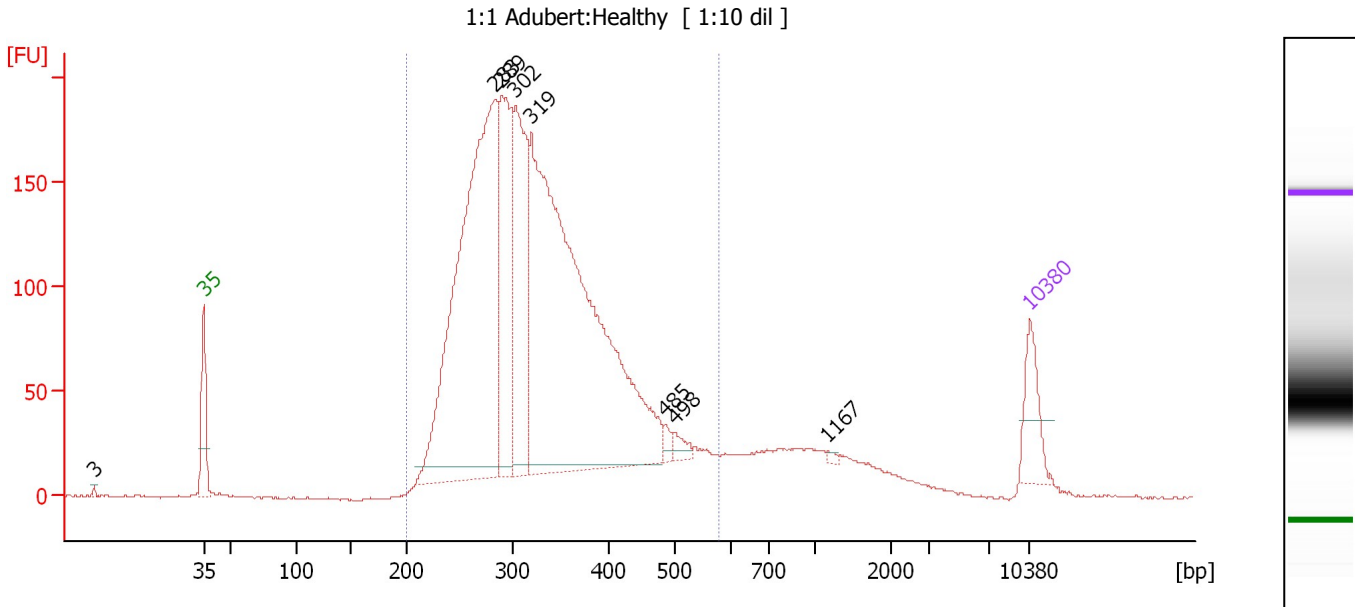
Region table for sample 2 : LR105 only

From [bp]	Average Size [bp]	To [bp]	Corr. Area	% of Total	Size distribution in CV [%]	Conc. [pg/μl]	Molarity [pmol/l]	Color
191	321	548	4,019.1	90	20.3	4,454.32	22,116.0	Blue

Assay Class: High Sensitivity DNA Assay
 Data Path: C:\...ents and Settings\Bioanalyzer\2014-09-16\2014-09-16_001.xad

Created: 9/16/2014 9:32:33 AM
 Modified: 9/16/2014 10:13:15 AM

Electropherogram Summary Continued ...



Overall Results for sample 3 : 1:1 Adubert:Healthy

Number of peaks found: 8 Corr. Area 1: 3,477.1
 Noise: 0.6

Peak table for sample 3 : 1:1 Adubert:Healthy

Peak	Size [bp]	Conc. [pg/μl]	Molarity [pmol/l]	Observations
1	3	0.00	0.0	
2	35	125.00	5,411.3	Lower Marker
3	283	1,351.39	7,233.4	
4	289	410.49	2,151.8	
5	302	430.87	2,160.0	
6	319	1,644.86	7,811.0	
7	485	16.36	51.1	
8	498	22.47	68.4	
9	1,167	4.73	6.1	
10	10,380	75.00	10.9	Upper Marker

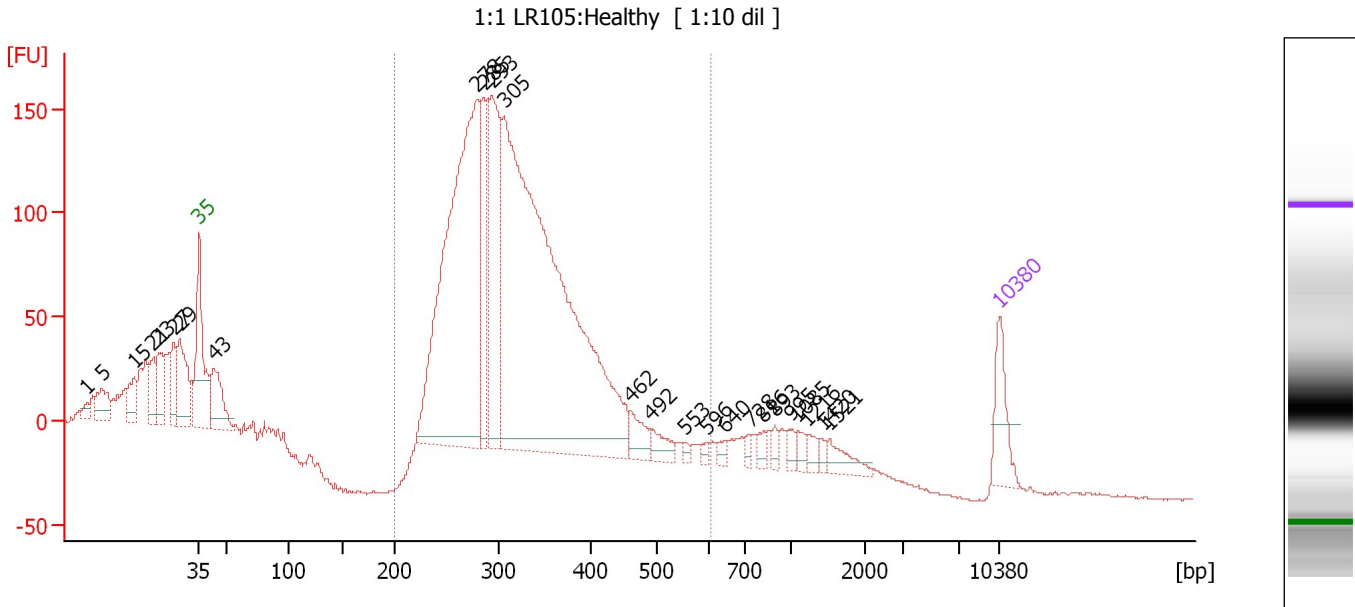
Region table for sample 3 : 1:1 Adubert:Healthy

From [bp]	Average Size [bp]	To [bp]	Corr. Area	% of Total	Size distribution in CV [%]	Conc. [pg/μl]	Molarity [pmol/l]	Color
200	331	580	3,477.1	90	22.0	4,332.39	21,022.2	Blue

Assay Class: High Sensitivity DNA Assay
 Data Path: C:\...ents and Settings\Bioanalyzer\2014-09-16\2014-09-16_001.xad

Created: 9/16/2014 9:32:33 AM
 Modified: 9/16/2014 10:13:15 AM

Electropherogram Summary Continued ...



Overall Results for sample 4 : 1:1 LR105:Healthy

Number of peaks found: 25 Corr. Area 1: 2,716.5
 Noise: 0.7

Peak table for sample 4 : 1:1 LR105:Healthy

Peak	Size [bp]	Conc. [pg/μl]	Molarity [pmol/l]	Observations
1	1	0.00	0.0	
2	5	0.00	0.0	
3	15	0.00	0.0	
4	21	0.00	0.0	
5	23	0.00	0.0	
6	27	0.00	0.0	
7	29	0.00	0.0	
8	35	125.00	5,411.3	Lower Marker
9	43	155.02	5,454.9	
10	278	1,214.50	6,613.1	
11	285	223.16	1,184.5	
12	293	415.99	2,149.9	
13	305	1,966.40	9,766.5	
14	462	53.78	176.4	
15	492	40.90	125.8	
16	553	10.14	27.8	
17	596	10.91	27.7	
18	640	13.88	32.9	
19	728	12.45	25.9	
20	816	17.33	32.2	
21	893	15.63	26.5	
22	995	18.76	28.6	
23	1,085	18.65	26.0	
24	1,216	20.50	25.5	
25	1,420	11.15	11.9	
26	1,521	39.04	38.9	


Assay Class: High Sensitivity DNA Assay
Data Path: C:\...ents and Settings\Bioanalyzer\2014-09-16\2014-09-16_001.xad

Created: 9/16/2014 9:32:33 AM
Modified: 9/16/2014 10:13:15 AM

Electropherogram Summary Continued ...**... Peak table for sample 4 : 1:1 LR105:Healthy**

Peak	Size [bp]	Conc. [pg/ μ l]	Molarity [pmol/l]	Observations
27	10,380	75.00	10.9	Upper Marker

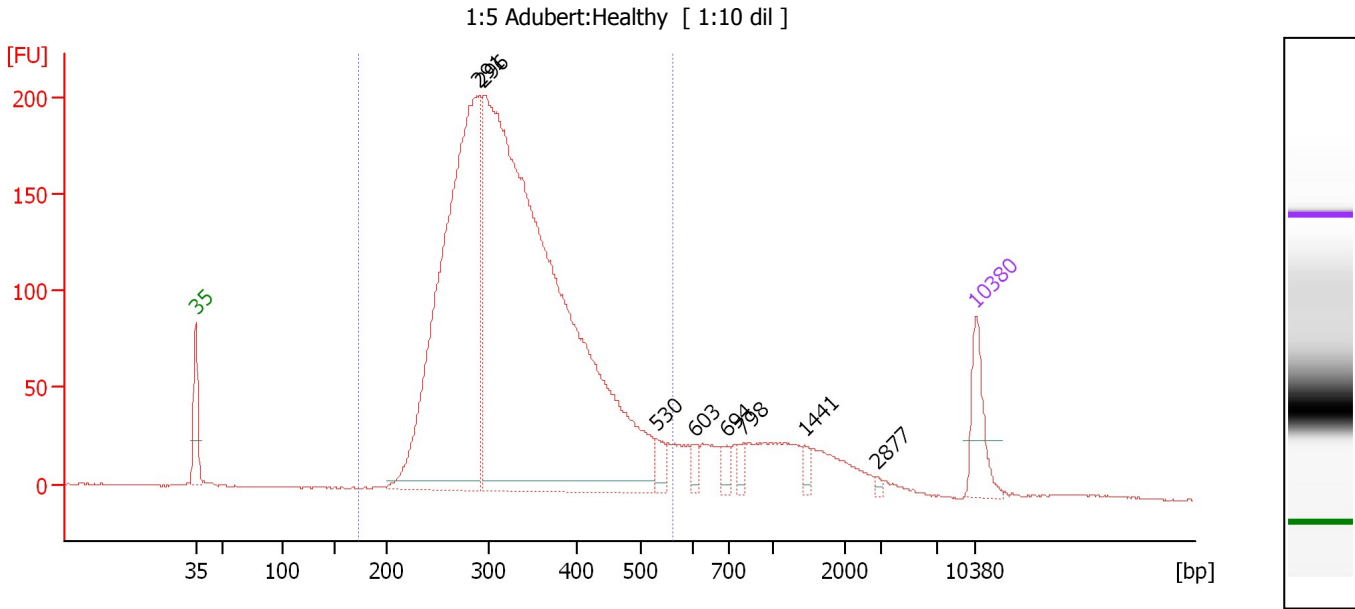
Region table for sample 4 : 1:1 LR105:Healthy

From [bp]	Average Size [bp]	To [bp]	Corr. Area	% of Total	Size distribution in CV [%]	Conc. [pg/ μ l]	Molarity [pmol/l]	Color
200	324	603	2,716.5	75	20.5	3,834.37	18,837.2	

Assay Class: High Sensitivity DNA Assay
 Data Path: C:\...ents and Settings\Bioanalyzer\2014-09-16\2014-09-16_001.xad

Created: 9/16/2014 9:32:33 AM
 Modified: 9/16/2014 10:13:15 AM

Electropherogram Summary Continued ...



Overall Results for sample 5 : 1:5 Adubert:Healthy

Number of peaks found: 8 Corr. Area 1: 3,503.5
 Noise: 0.4

Peak table for sample 5 : 1:5 Adubert:Healthy

Peak	Size [bp]	Conc. [pg/μl]	Molarity [pmol/l]	Observations
1	35	125.00	5,411.3	Lower Marker
2	291	1,344.13	6,990.0	
3	296	2,648.22	13,575.2	
4	530	28.11	80.4	
5	603	17.53	44.1	
6	694	22.38	48.8	
7	798	17.21	32.7	
8	1,441	15.55	16.4	
9	2,877	5.29	2.8	
10	10,380	75.00	10.9	Upper Marker

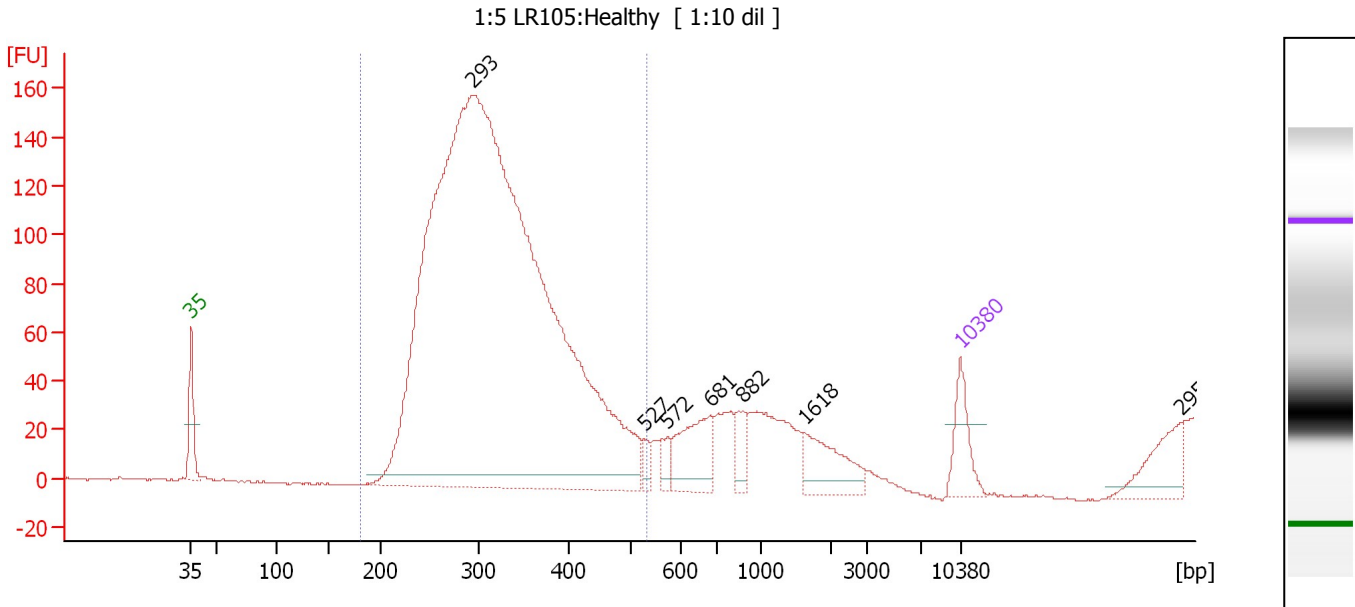
Region table for sample 5 : 1:5 Adubert:Healthy

From [bp]	Average Size [bp]	To [bp]	Corr. Area	% of Total	Size distribution in CV [%]	Conc. [pg/μl]	Molarity [pmol/l]	Color
173	333	561	3,503.5	88	20.9	3,842.87	18,433.0	Blue

Assay Class: High Sensitivity DNA Assay
 Data Path: C:\...ents and Settings\Bioanalyzer\2014-09-16\2014-09-16_001.xad

Created: 9/16/2014 9:32:33 AM
 Modified: 9/16/2014 10:13:15 AM

Electropherogram Summary Continued ...



Overall Results for sample 6 : 1:5 LR105:Healthy

Number of peaks found: 7 Corr. Area 1: 2,386.0
 Noise: 0.4

Peak table for sample 6 : 1:5 LR105:Healthy

Peak	Size [bp]	Conc. [pg/µl]	Molarity [pmol/l]	Observations
1	35	125.00	5,411.3	Lower Marker
2	293	4,714.98	24,401.6	
3	527	21.63	62.2	
4	572	30.66	81.2	
5	681	151.46	336.9	
6	882	47.97	82.4	
7	1,618	113.94	106.7	
8	10,380	75.00	10.9	Upper Marker
9	29,523	0.00	0.0	

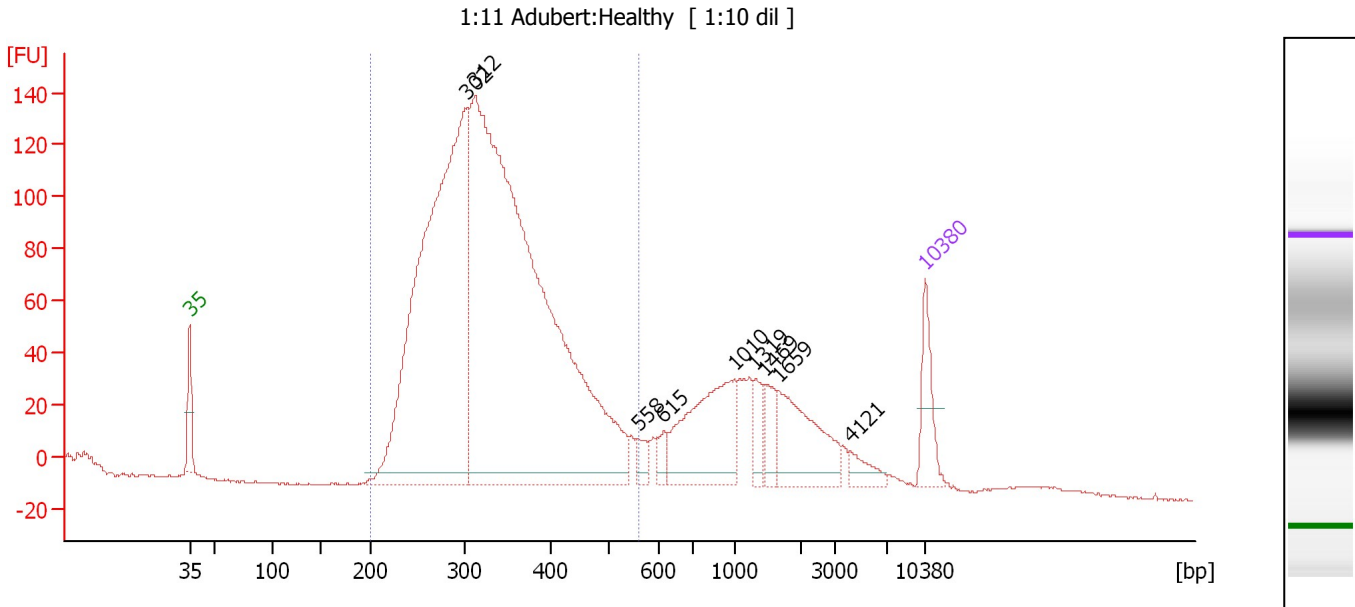
Region table for sample 6 : 1:5 LR105:Healthy

From [bp]	Average Size [bp]	To [bp]	Corr. Area	% of Total	Size distribution in CV [%]	Conc. [pg/µl]	Molarity [pmol/l]	Color
181	316	532	2,386.0	94	18.2	3,825.73	19,071.3	Blue

Assay Class: High Sensitivity DNA Assay
 Data Path: C:\...ents and Settings\Bioanalyzer\2014-09-16\2014-09-16_001.xad

Created: 9/16/2014 9:32:33 AM
 Modified: 9/16/2014 10:13:15 AM

Electropherogram Summary Continued ...



Overall Results for sample 7 : 1:11 Adubert:Healthy

Number of peaks found: 9 Corr. Area 1: 2,473.9
 Noise: 0.3

Peak table for sample 7 : 1:11 Adubert:Healthy

Peak	Size [bp]	Conc. [pg/μl]	Molarity [pmol/l]	Observations
1	35	125.00	5,411.3	Lower Marker
2	302	1,624.56	8,151.9	
3	312	2,560.06	12,430.9	
4	558	31.27	84.9	
5	615	28.78	70.9	
6	1,010	263.13	394.7	
7	1,319	45.05	51.8	
8	1,469	45.79	47.2	
9	1,659	172.69	157.7	
10	4,121	31.39	11.5	
11	10,380	75.00	10.9	Upper Marker

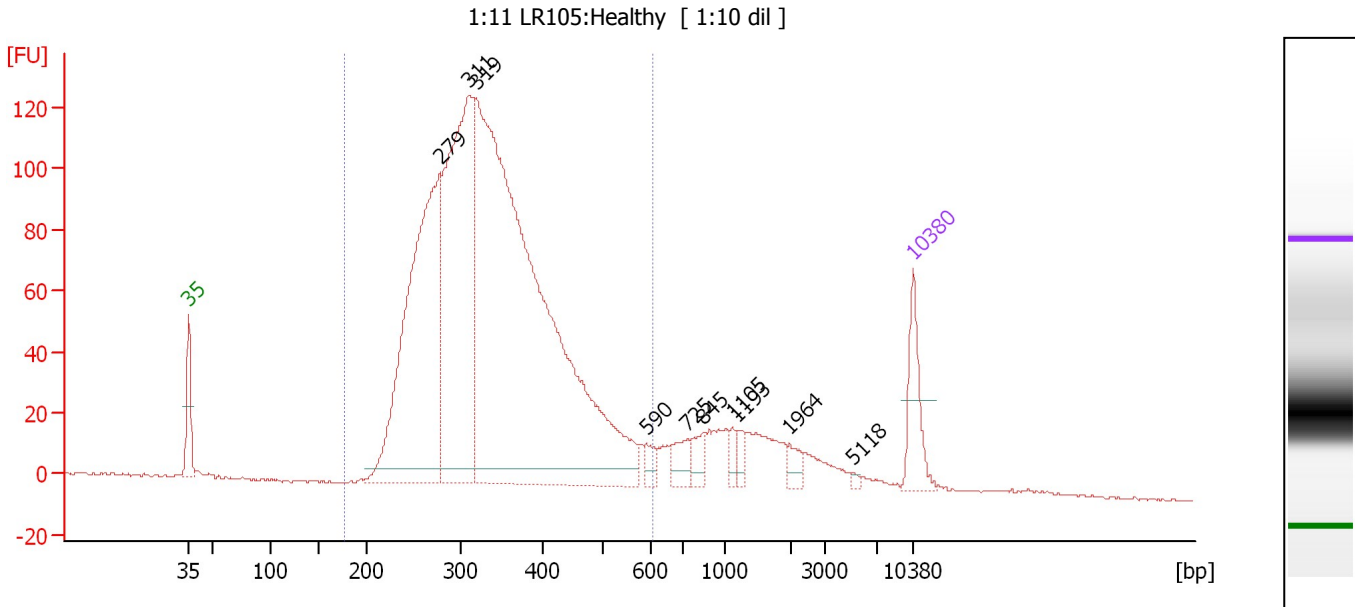
Region table for sample 7 : 1:11 Adubert:Healthy

From [bp]	Average Size [bp]	To [bp]	Corr. Area	% of Total	Size distribution in CV [%]	Conc. [pg/μl]	Molarity [pmol/l]	Color
200	336	561	2,473.9	79	20.5	3,862.13	18,364.6	Blue

Assay Class: High Sensitivity DNA Assay
 Data Path: C:\...ents and Settings\Bioanalyzer\2014-09-16\2014-09-16_001.xad

Created: 9/16/2014 9:32:33 AM
 Modified: 9/16/2014 10:13:15 AM

Electropherogram Summary Continued ...



Overall Results for sample 8 : 1:11 LR105:Healthy

Number of peaks found: 10 Corr. Area 1: 2,291.6
 Noise: 0.4

Peak table for sample 8 : 1:11 LR105:Healthy

Peak	Size [bp]	Conc. [pg/µl]	Molarity [pmol/l]	Observations
1	35	125.00	5,411.3	Lower Marker
2	279	900.25	4,893.2	
3	311	814.69	3,965.9	
4	319	2,033.59	9,661.1	
5	590	24.28	62.3	
6	725	40.89	85.5	
7	845	32.82	58.8	
8	1,105	15.71	21.5	
9	1,193	18.54	23.5	
10	1,964	21.20	16.4	
11	5,118	4.77	1.4	
12	10,380	75.00	10.9	Upper Marker

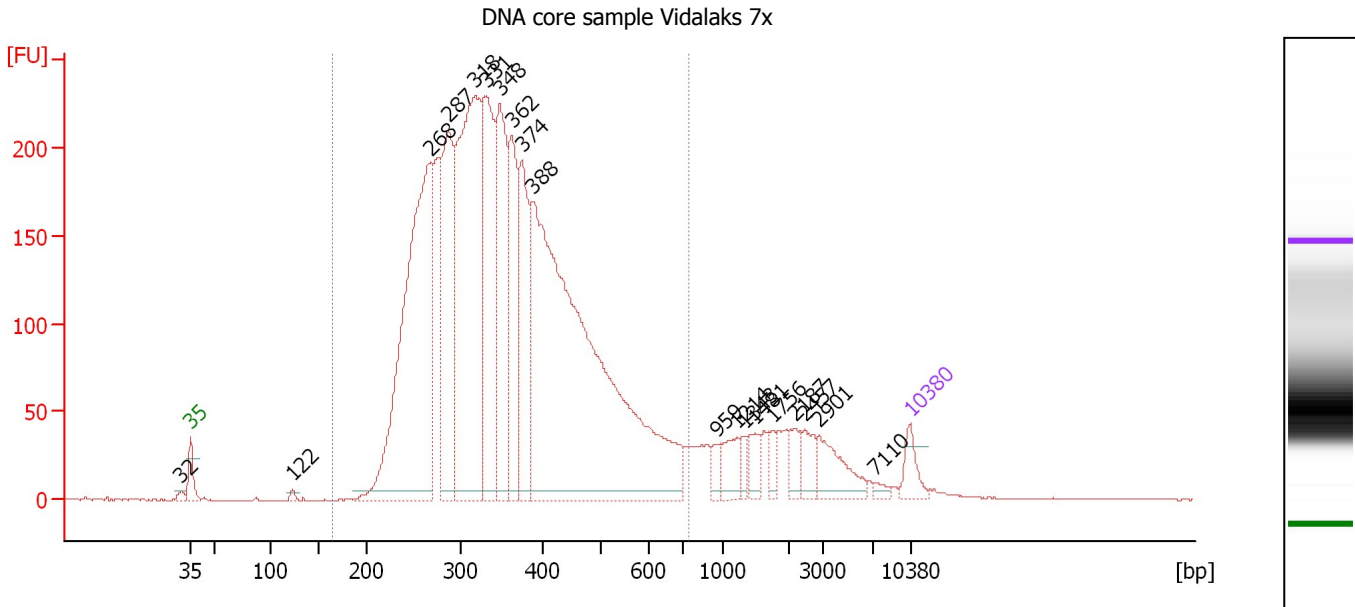
Region table for sample 8 : 1:11 LR105:Healthy

From [bp]	Average Size [bp]	To [bp]	Corr. Area	% of Total	Size distribution in CV [%]	Conc. [pg/µl]	Molarity [pmol/l]	Color
177	342	608	2,291.5	87	22.6	3,647.63	17,223.2	Blue

Assay Class: High Sensitivity DNA Assay
 Data Path: C:\...ents and Settings\Bioanalyzer\2014-09-16\2014-09-16_001.xad

Created: 9/16/2014 9:32:33 AM
 Modified: 9/16/2014 10:13:15 AM

Electropherogram Summary Continued ...



Overall Results for sample 9 : DNA core sample Vidalaks 7x

Number of peaks found: 19 Corr. Area 1: 5,035.1
 Noise: 0.3

Peak table for sample 9 : DNA core sample Vidalaks 7x

Peak	Size [bp]	Conc. [pg/μl]	Molarity [pmol/l]	Observations
1	32	0.00	0.0	
2	35	125.00	5,411.3	Lower Marker
3	122	20.18	251.4	
4	268	2,139.82	12,116.3	
5	287	971.00	5,125.5	
6	318	1,801.27	8,592.7	
7	331	929.24	4,251.7	
8	348	791.76	3,448.2	
9	362	562.78	2,355.0	
10	374	554.02	2,242.5	
11	388	3,282.05	12,821.4	
12	959	53.76	85.0	
13	1,214	108.60	135.5	
14	1,343	40.56	45.7	
15	1,481	76.06	77.8	
16	1,756	44.08	38.0	
17	2,187	61.47	42.6	
18	2,457	83.31	51.4	
19	2,901	162.99	85.1	
20	7,110	20.26	4.3	
21	10,380	75.00	10.9	Upper Marker

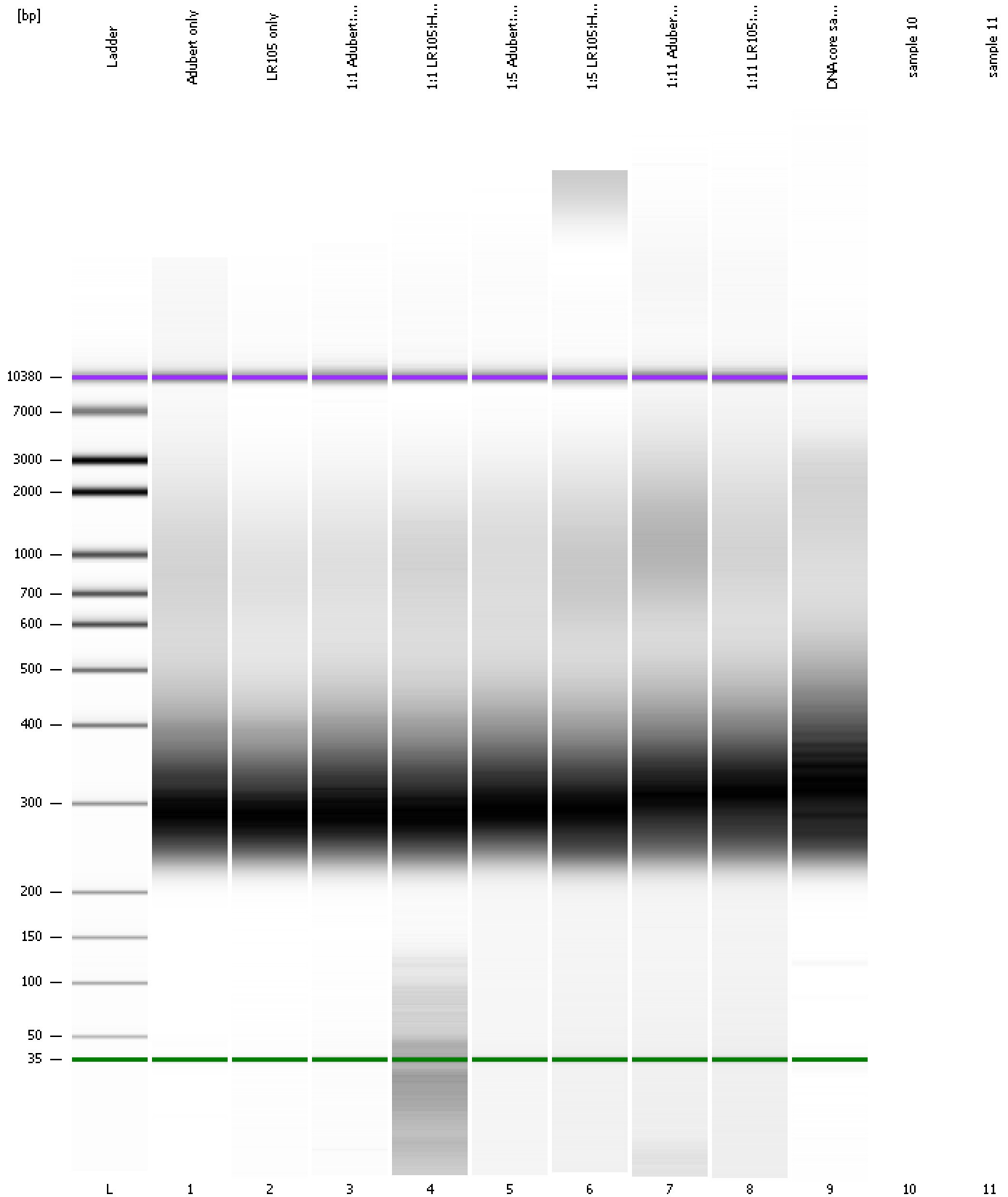
Region table for sample 9 : DNA core sample Vidalaks 7x

From [bp]	Average Size [bp]	To [bp]	Corr. Area	% of Total	Size distribution in CV [%]	Conc. [pg/μl]	Molarity [pmol/l]	Color
164	363	753	5,035.1	90	27.5	11,429.90	52,221.3	Blue

Assay Class: High Sensitivity DNA Assay
Data Path: C:\...ents and Settings\Bioanalyzer\2014-09-16\2014-09-16_001.xad

Created: 9/16/2014 9:32:33 AM
Modified: 9/16/2014 10:13:15 AM

Gel Image



Assay Class: High Sensitivity DNA Assay
Data Path: C:\...ents and Settings\Bioanalyzer\2014-09-16\2014-09-16_001.xad

Created: 9/16/2014 9:32:33 AM
Modified: 9/16/2014 10:13:15 AM

Invalid Samples

Sample 10 has not been run, no results available.

Sample 11 has not been run, no results available.

Assay Class: High Sensitivity DNA Assay
 Data Path: C:\...ents and Settings\Bioanalyzer\2014-09-16\2014-09-16_001.xad

Created: 9/16/2014 9:32:33 AM
 Modified: 9/16/2014 10:13:15 AM

Run Logbook

Description	Number	Source	Category	Sub Category	Time	Time Zone	User	Host
Run ended on port 1 (Number of wells acquired: 10)		Instrument	Run		9/16/2014 10:08:10 AM	(GMT --07:00) Pacific Standard Time	UC Davis	D8XSMGH1
Run started on port 1 (File: C:\Documents and Settings\Bioanalyzer\2014-09-16\2014-09-16_001.xad)		Instrument	Run		9/16/2014 9:32:39 AM	(GMT --07:00) Pacific Standard Time	UC Davis	D8XSMGH1
Product Number : G2938B		Instrument	Run		9/16/2014 9:32:39 AM	(GMT --07:00) Pacific Standard Time	UC Davis	D8XSMGH1
Name :		Instrument	Run		9/16/2014 9:32:39 AM	(GMT --07:00) Pacific Standard Time	UC Davis	D8XSMGH1
Vendor : Agilent Technologies		Instrument	Run		9/16/2014 9:32:39 AM	(GMT --07:00) Pacific Standard Time	UC Davis	D8XSMGH1
Serial# : DE13701086		Instrument	Run		9/16/2014 9:32:39 AM	(GMT --07:00) Pacific Standard Time	UC Davis	D8XSMGH1
Firmware : C.01.069		Instrument	Run		9/16/2014 9:32:39 AM	(GMT --07:00) Pacific Standard Time	UC Davis	D8XSMGH1
Cartridge : Electrode		Instrument	Run		9/16/2014 9:32:39 AM	(GMT --07:00) Pacific Standard Time	UC Davis	D8XSMGH1