

Assay Class: High Sensitivity DNA Assay
Data Path: C:\...ents and Settings\Bioanalyzer\2014-09-24\2014-09-24_006.xad

Created: 9/24/2014 3:34:07 PM
Modified: 9/24/2014 4:17:53 PM

Electrophoresis File Run Summary

Instrument Information:

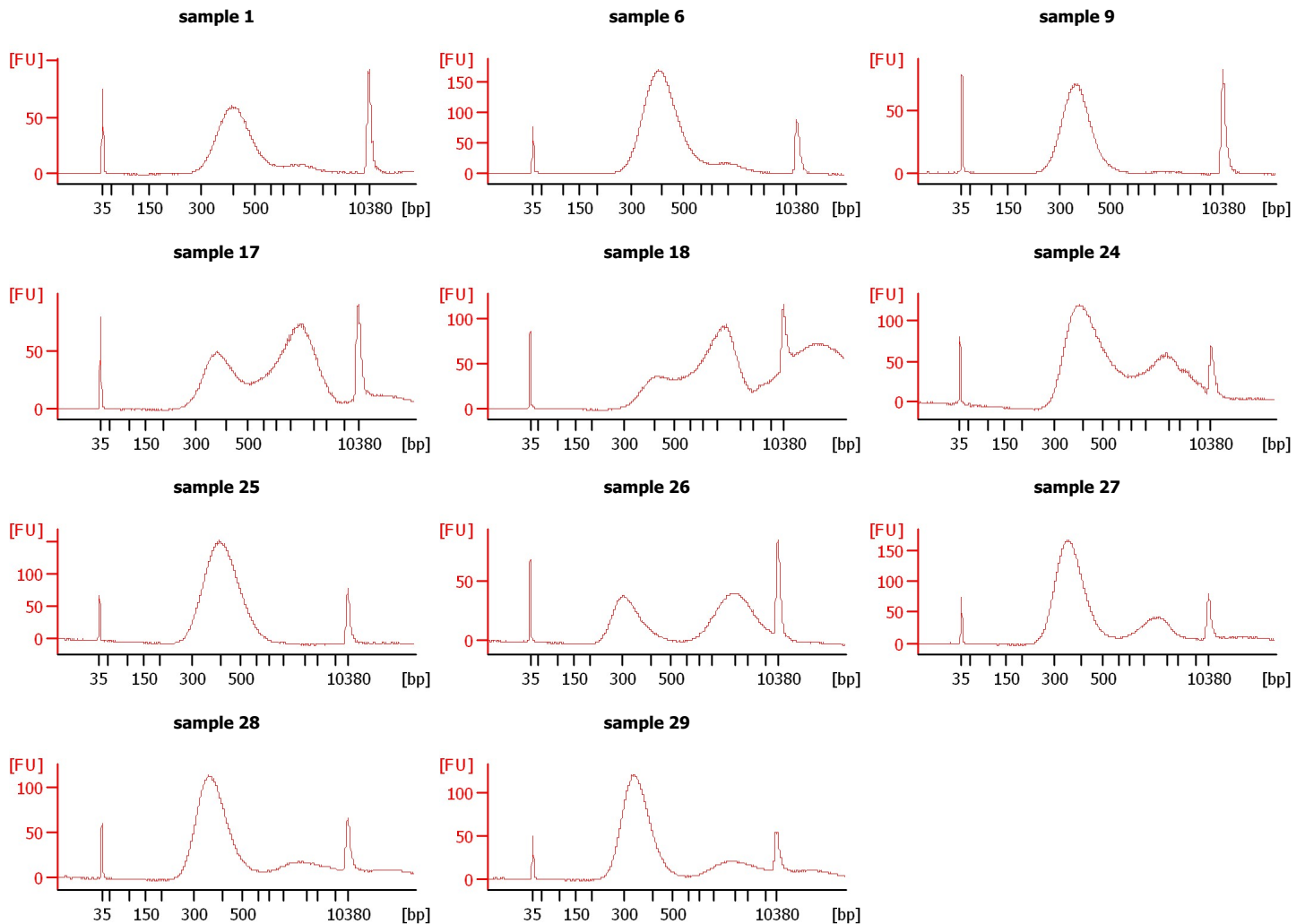
Instrument Name: DE13701086 Firmware: C.01.069
Serial#: DE13701086 Type: G2938B

Assay Information:

Assay Origin Path: C:\Program Files\Agilent\2100 bioanalyzer\2100 expert\assays\dsDNA\High Sensitivity DNA.xsy
Assay Class: High Sensitivity DNA Assay
Version: 1.03
Assay Comments: Copyright © 2003-2010 Agilent Technologies

Chip Information:

Chip Lot #:
Reagent Kit Lot #:
Chip Comments:



Assay Class: High Sensitivity DNA Assay
 Data Path: C:\...ents and Settings\Bioanalyzer\2014-09-24\2014-09-24_006.xad

Created: 9/24/2014 3:34:07 PM
 Modified: 9/24/2014 4:17:53 PM

Electrophoresis File Run Summary (Chip Summary)

Sample Name	Sample Comment	Rest. Digest	Status	Observation	Result Label	Result Color
sample 1		<input type="checkbox"/>	✓			
sample 6		<input type="checkbox"/>	✓			
sample 9		<input type="checkbox"/>	✓			
sample 17		<input type="checkbox"/>	✓			
sample 18		<input type="checkbox"/>	✓			
sample 24		<input type="checkbox"/>	✓			
sample 25		<input type="checkbox"/>	✓			
sample 26		<input type="checkbox"/>	✓			
sample 27		<input type="checkbox"/>	✓			
sample 28		<input type="checkbox"/>	✓			
sample 29		<input type="checkbox"/>	✓			
Ladder		<input type="checkbox"/>	✓			

Chip Lot #

Reagent Kit Lot #

Chip Comments :

Assay Class: High Sensitivity DNA Assay
 Data Path: C:\...ents and Settings\Bioanalyzer\2014-09-24\2014-09-24_006.xad

Created: 9/24/2014 3:34:07 PM
 Modified: 9/24/2014 4:17:53 PM

Electrophoresis Assay Details

General Analysis Settings

Number of Available Sample and Ladder Wells (Max.) : 12
 Minimum Visible Range [s] : 32
 Maximum Visible Range [s] : 138
 Start Analysis Time Range [s] : 33
 End Analysis Time Range [s] : 137.5
 Ladder Concentration [pg/μl] : 1950
 Uses Standard Area for Ladder Fragments
 Lower Marker Concentration [pg/μl] : 125
 Upper Marker Concentration [pg/μl] : 75
 Used Upper Marker for Quantitation
 Standard Curve Fit is Point to Point
 Show Data Aligned to Lower and Upper Marker

Integrator Settings

Integration Start Time [s] : 33.05
 Integration End Time [s] : 137
 Slope Threshold : 0.8
 Height Threshold [FU] : 5
 Area Threshold : 0.1
 Width Threshold [s] : 0.6
 Baseline Plateau [s] : 0.5

Filter Settings

Filter Width [s] : 0.5
 Polynomial Order : 4

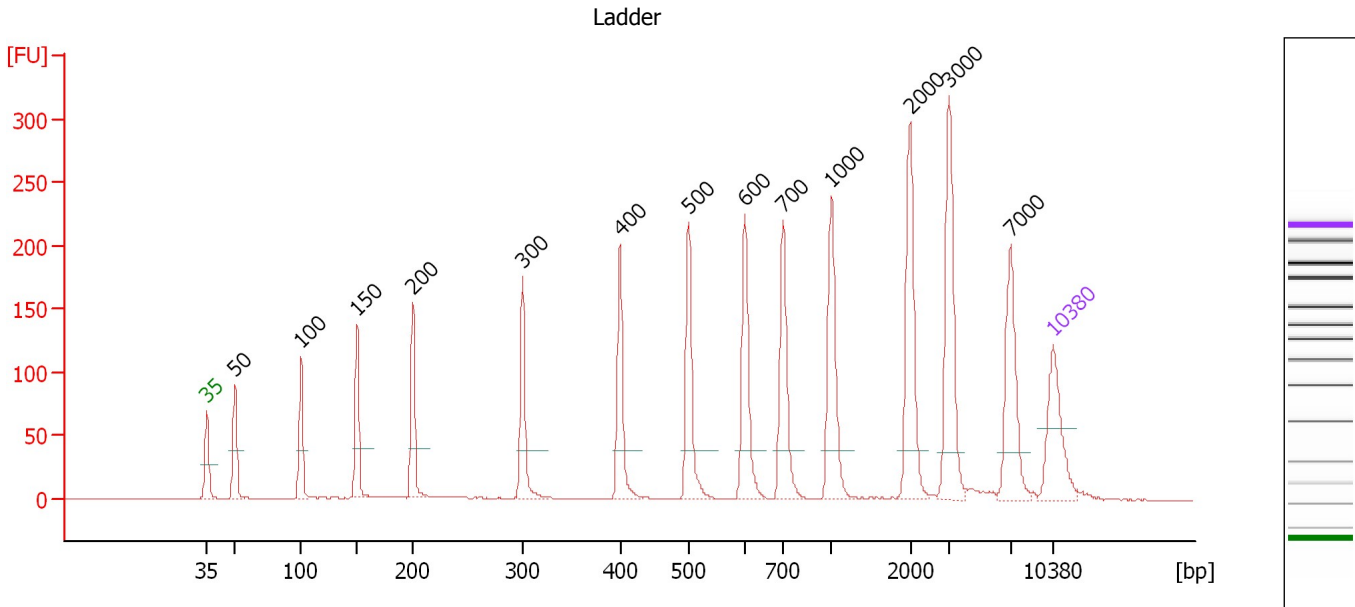
Ladder

Ladder Peak	Size	Area
1	35	160
2	50	210
3	100	208
4	150	221
5	200	242
6	300	270
7	400	305
8	500	306
9	600	336
10	700	321
11	1000	366
12	2000	413
13	3000	411
14	7000	400
15	10380	214

Assay Class: High Sensitivity DNA Assay
 Data Path: C:\...ents and Settings\Bioanalyzer\2014-09-24\2014-09-24_006.xad

Created: 9/24/2014 3:34:07 PM
 Modified: 9/24/2014 4:17:53 PM

Electropherogram Summary



Overall Results for Ladder

Noise: 0.1

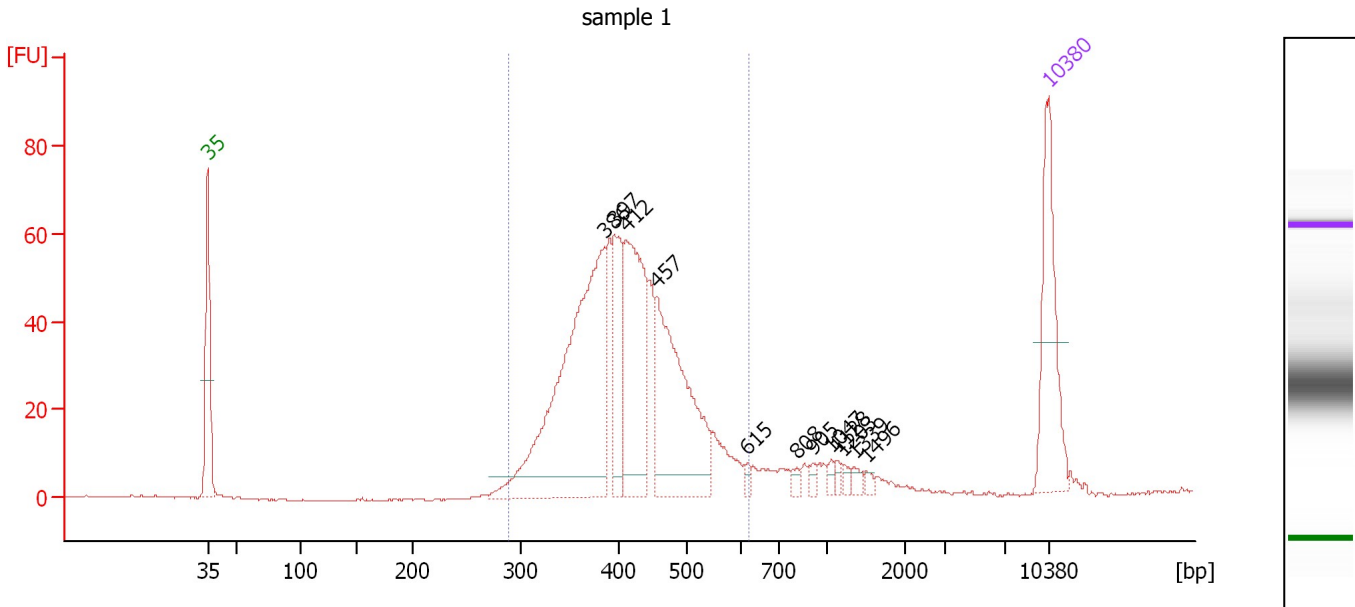
Peak table for Ladder

Peak	Size [bp]	Conc. [pg/μl]	Molarity [pmol/l]	Observations
1	35	125.00	5,411.3	Lower Marker
2	50	150.00	4,545.5	Ladder Peak
3	100	150.00	2,272.7	Ladder Peak
4	150	150.00	1,515.2	Ladder Peak
5	200	150.00	1,136.4	Ladder Peak
6	300	150.00	757.6	Ladder Peak
7	400	150.00	568.2	Ladder Peak
8	500	150.00	454.5	Ladder Peak
9	600	150.00	378.8	Ladder Peak
10	700	150.00	324.7	Ladder Peak
11	1,000	150.00	227.3	Ladder Peak
12	2,000	150.00	113.6	Ladder Peak
13	3,000	150.00	75.8	Ladder Peak
14	7,000	150.00	32.5	Ladder Peak
15	10,380	75.00	10.9	Upper Marker

Assay Class: High Sensitivity DNA Assay
 Data Path: C:\...ents and Settings\Bioanalyzer\2014-09-24\2014-09-24_006.xad

Created: 9/24/2014 3:34:07 PM
 Modified: 9/24/2014 4:17:53 PM

Electropherogram Summary Continued ...



Overall Results for sample 1 : sample 1

Number of peaks found: 12 Corr. Area 1: 800.3
 Noise: 0.2

Peak table for sample 1 : sample 1

Peak	Size [bp]	Conc. [pg/μl]	Molarity [pmol/l]	Observations
1	35	125.00	5,411.3	Lower Marker
2	386	337.87	1,325.7	
3	397	78.00	298.0	
4	412	154.10	566.2	
5	457	180.29	597.9	
6	615	4.66	11.5	
7	808	5.15	9.7	
8	905	4.45	7.4	
9	1,047	4.43	6.4	
10	1,128	4.10	5.5	
11	1,203	4.27	5.4	
12	1,339	4.63	5.2	
13	1,496	3.22	3.3	
14	10,380	75.00	10.9	Upper Marker

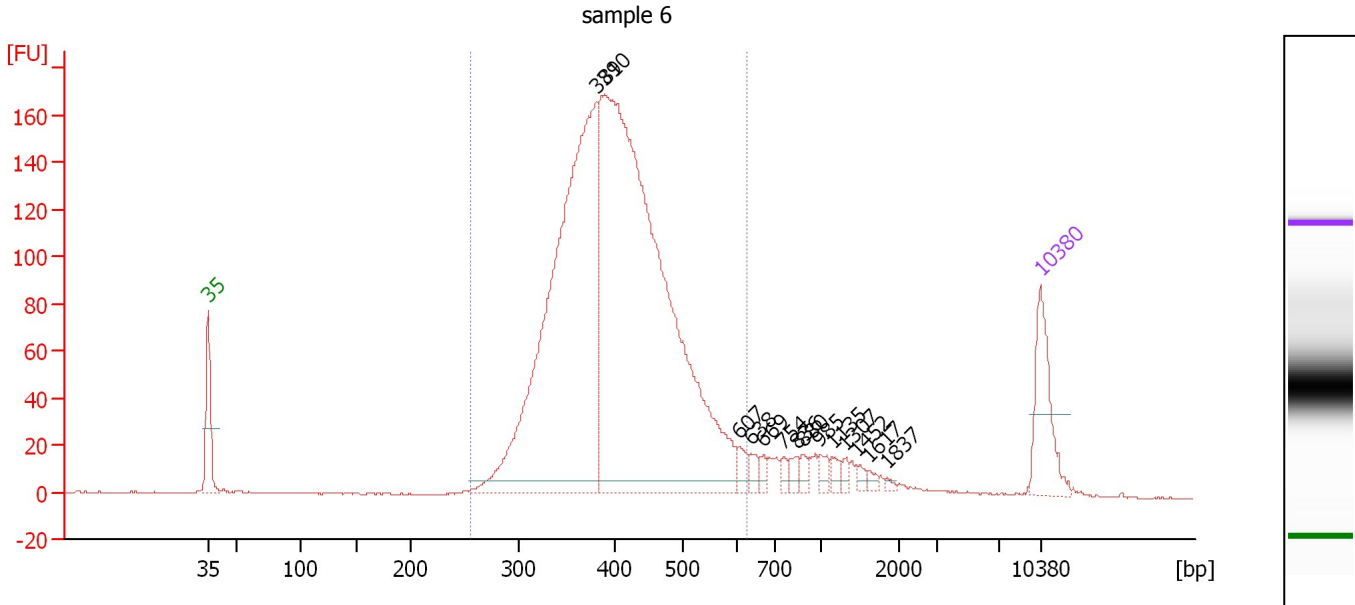
Region table for sample 1 : sample 1

From [bp]	Average Size [bp]	To [bp]	Corr. Area	% of Total	Size distribution in CV [%]	Conc. [pg/μl]	Molarity [pmol/l]	Color
288	418	618	800.3	91	15.4	853.10	3,183.9	Blue

Assay Class: High Sensitivity DNA Assay
 Data Path: C:\...ents and Settings\Bioanalyzer\2014-09-24\2014-09-24_006.xad

Created: 9/24/2014 3:34:07 PM
 Modified: 9/24/2014 4:17:53 PM

Electropherogram Summary Continued ...



Overall Results for sample 2 : sample 6

Number of peaks found: 14 Corr. Area 1: 2,468.4
 Noise: 0.3

Peak table for sample 2 : sample 6

Peak	Size [bp]	Conc. [pg/μl]	Molarity [pmol/l]	Observations
1	35	125.00	5,411.3	Lower Marker
2	381	948.34	3,772.3	
3	390	1,339.75	5,200.2	
4	607	17.30	43.2	
5	638	11.22	26.7	
6	669	8.70	19.7	
7	754	9.20	18.5	
8	836	12.55	22.8	
9	880	9.72	16.7	
10	985	12.01	18.5	
11	1,135	10.75	14.3	
12	1,307	6.67	7.7	
13	1,452	7.40	7.7	
14	1,617	5.87	5.5	
15	1,837	3.43	2.8	
16	10,380	75.00	10.9	Upper Marker

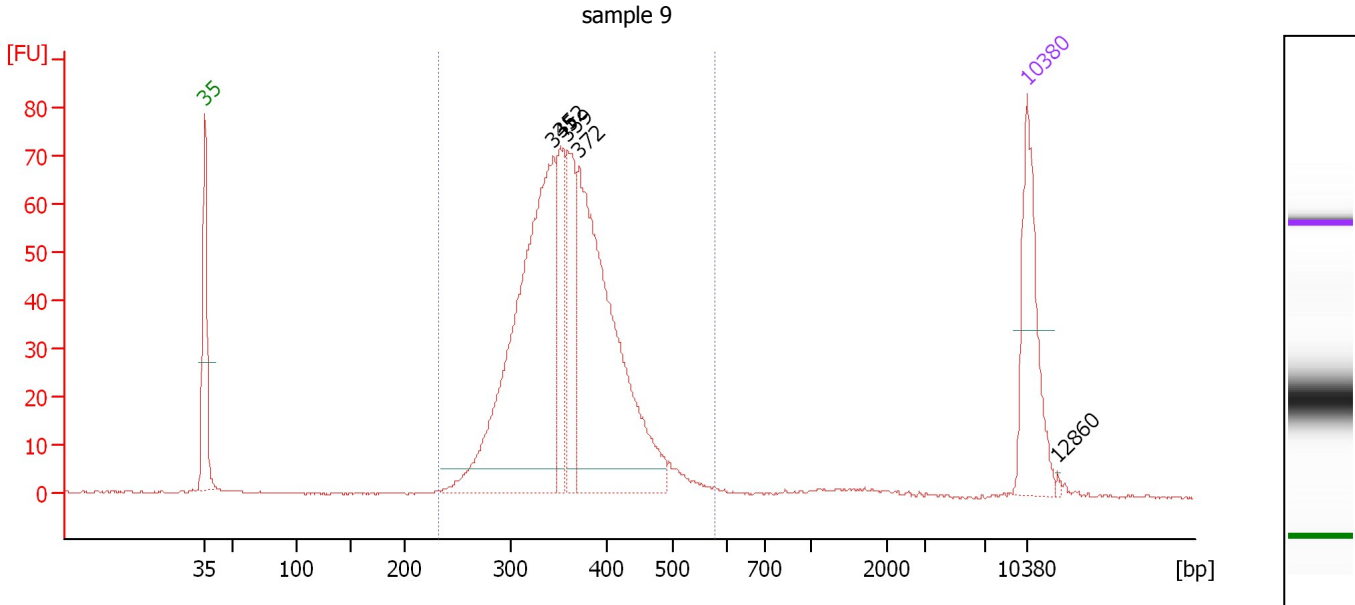
Region table for sample 2 : sample 6

From [bp]	Average Size [bp]	To [bp]	Corr. Area	% of Total	Size distribution in CV [%]	Conc. [pg/μl]	Molarity [pmol/l]	Color
256	409	628	2,468.4	91	16.7	2,342.44	8,983.0	Blue

Assay Class: High Sensitivity DNA Assay
 Data Path: C:\...ents and Settings\Bioanalyzer\2014-09-24\2014-09-24_006.xad

Created: 9/24/2014 3:34:07 PM
 Modified: 9/24/2014 4:17:53 PM

Electropherogram Summary Continued ...



Overall Results for sample 3 : sample 9

Number of peaks found: 5 Corr. Area 1: 931.9
 Noise: 0.2

Peak table for sample 3 : sample 9

Peak	Size [bp]	Conc. [pg/μl]	Molarity [pmol/l]	Observations
1	35	125.00	5,411.3	Lower Marker
2	345	397.64	1,748.7	
3	352	79.23	341.2	
4	359	85.80	361.9	
5	372	340.33	1,387.8	
6	10,380	75.00	10.9	Upper Marker
7	12,860	0.00	0.0	

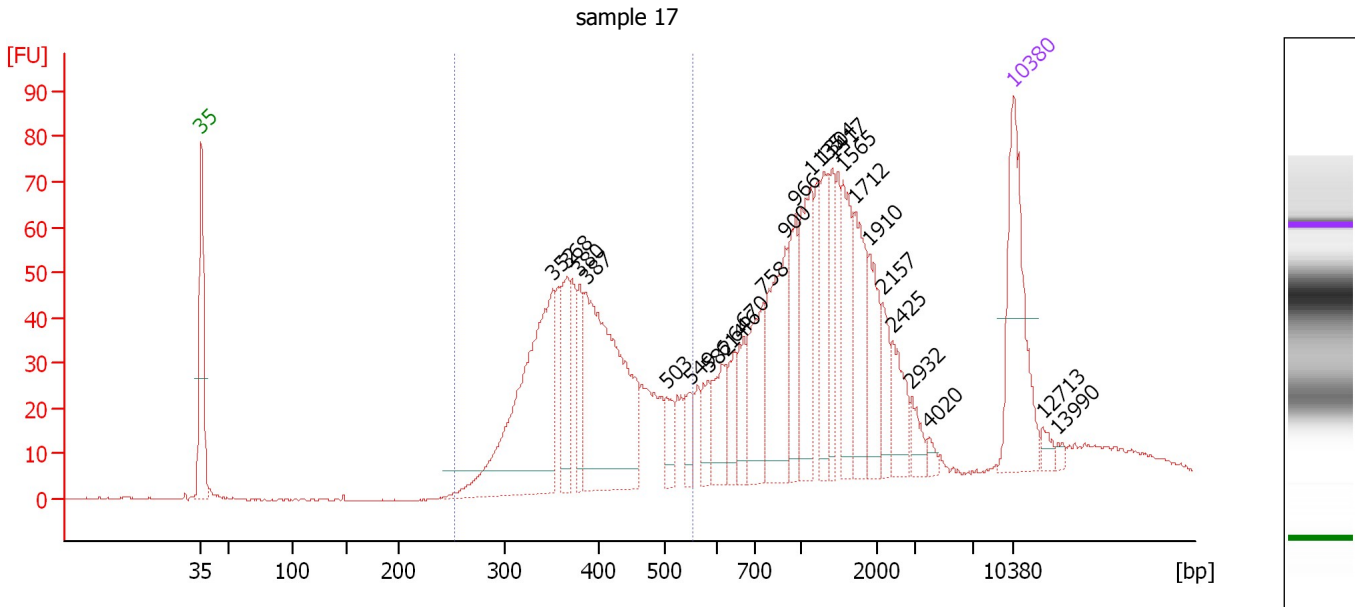
Region table for sample 3 : sample 9

From [bp]	Average Size [bp]	To [bp]	Corr. Area	% of Total	Size distribution in CV [%]	Conc. [pg/μl]	Molarity [pmol/l]	Color
231	362	577	931.9	95	14.5	963.78	4,135.6	Blue

Assay Class: High Sensitivity DNA Assay
 Data Path: C:\...ents and Settings\Bioanalyzer\2014-09-24\2014-09-24_006.xad

Created: 9/24/2014 3:34:07 PM
 Modified: 9/24/2014 4:17:53 PM

Electropherogram Summary Continued ...



Overall Results for sample 4 : sample 17

Number of peaks found: 25 Corr. Area 1: 659.8
 Noise: 0.2

Peak table for sample 4 : sample 17

Peak	Size [bp]	Conc. [pg/μl]	Molarity [pmol/l]	Observations
1	35	125.00	5,411.3	Lower Marker
2	352	203.62	877.1	
3	368	48.67	200.5	
4	380	32.84	131.0	
5	387	193.37	757.0	
6	503	16.48	49.6	
7	549	17.01	46.9	
8	582	16.81	43.8	
9	614	30.87	76.2	
10	646	20.50	48.1	
11	670	24.09	54.4	
12	758	53.02	106.0	
13	900	76.06	128.1	
14	966	41.19	64.6	
15	1,135	61.24	81.7	
16	1,304	39.30	45.7	
17	1,417	29.73	31.8	
18	1,565	44.92	43.5	
19	1,712	47.21	41.8	
20	1,910	34.19	27.1	
21	2,157	17.80	12.5	
22	2,425	24.79	15.5	
23	2,932	11.23	5.8	
24	4,020	4.34	1.6	
25	10,380	75.00	10.9	Upper Marker
26	12,713	0.00	0.0	


Assay Class: High Sensitivity DNA Assay
Data Path: C:\...ents and Settings\Bioanalyzer\2014-09-24\2014-09-24_006.xad

Created: 9/24/2014 3:34:07 PM
Modified: 9/24/2014 4:17:53 PM

Electropherogram Summary Continued ...**... Peak table for sample 4 : sample 17**

Peak	Size [bp]	Conc. [pg/ μ l]	Molarity [pmol/l]	Observations
27	13,990	0.00	0.0	

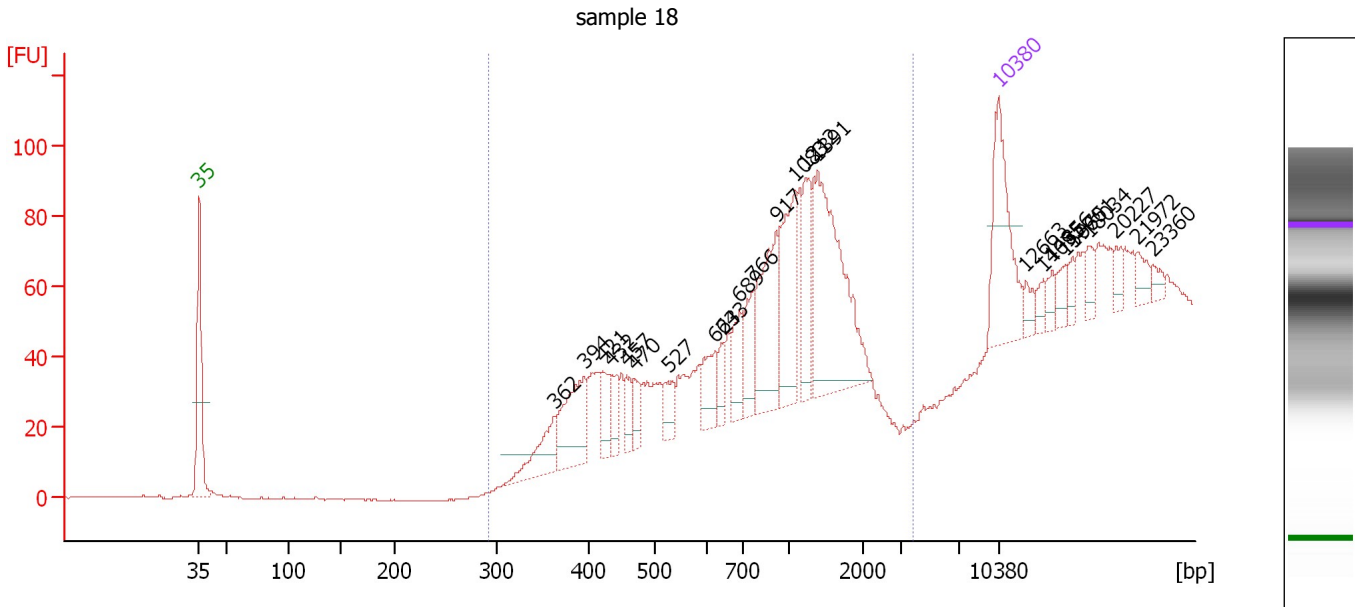
Region table for sample 4 : sample 17

From [bp]	Average Size [bp]	To [bp]	Corr. Area	% of Total	Size distribution in CV [%]	Conc. [pg/ μ l]	Molarity [pmol/l]	Color
253	396	553	659.8	42	16.3	603.23	2,383.4	

Assay Class: High Sensitivity DNA Assay
 Data Path: C:\...ents and Settings\Bioanalyzer\2014-09-24\2014-09-24_006.xad

Created: 9/24/2014 3:34:07 PM
 Modified: 9/24/2014 4:17:53 PM

Electropherogram Summary Continued ...



Overall Results for sample 5 : sample 18

Number of peaks found: 24 Corr. Area 1: 520.3
 Noise: 0.2

Peak table for sample 5 : sample 18


Peak	Size [bp]	Conc. [pg/μl]	Molarity [pmol/l]	Observations
1	35	125.00	5,411.3	Lower Marker
2	362	45.60	190.8	
3	394	77.90	299.2	
4	421	26.69	96.1	
5	432	23.41	82.0	
6	457	18.40	61.0	
7	470	17.20	55.4	
8	527	20.66	59.4	
9	623	30.46	74.1	
10	643	14.65	34.5	
11	689	35.79	78.7	
12	766	32.32	64.0	
13	917	86.58	143.0	
14	1,083	78.62	110.0	
15	1,212	45.57	57.0	
16	1,391	159.43	173.7	
17	10,380	75.00	10.9	Upper Marker
18	12,663	0.00	0.0	
19	14,095	0.00	0.0	
20	14,856	0.00	0.0	
21	15,975	0.00	0.0	
22	16,601	0.00	0.0	
23	18,034	0.00	0.0	
24	20,227	0.00	0.0	
25	21,972	0.00	0.0	
26	23,360	0.00	0.0	

Assay Class: High Sensitivity DNA Assay
Data Path: C:\...ents and Settings\Bioanalyzer\2014-09-24\2014-09-24_006.xad

Created: 9/24/2014 3:34:07 PM
Modified: 9/24/2014 4:17:53 PM

Electropherogram Summary Continued ...

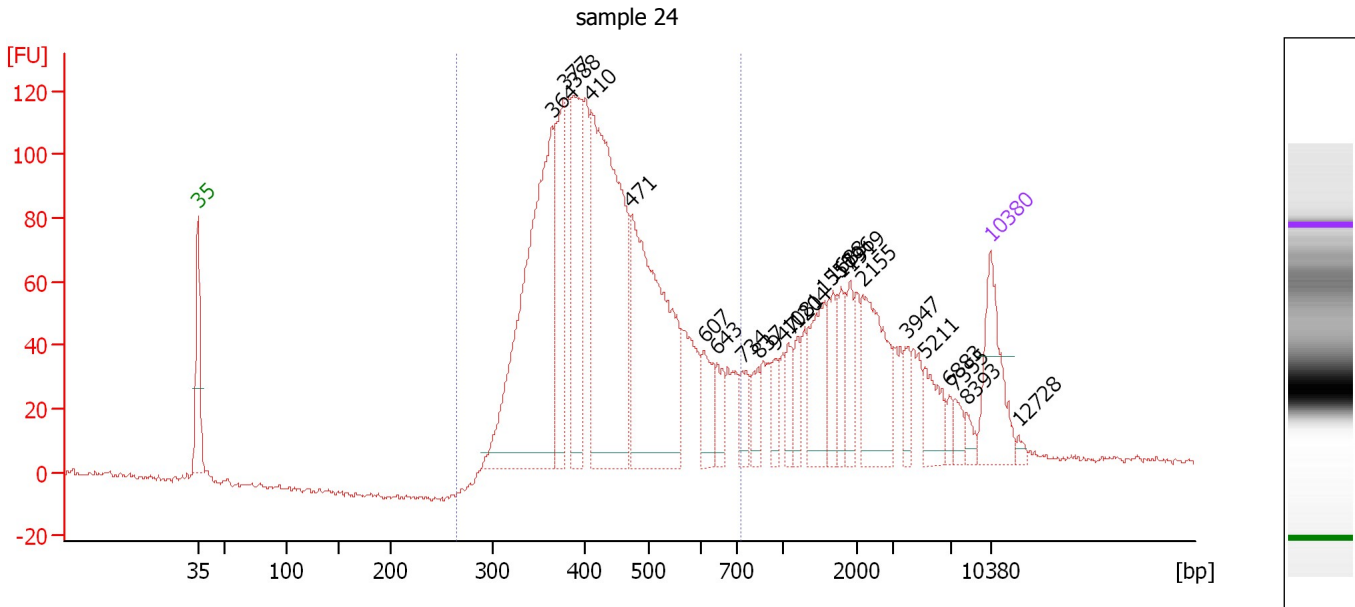
... Region table for sample 5 : sample 18

From [bp]	Average Size [bp]	To [bp]	Corr. Area	% of Total	Size distribution in CV [%]	Conc. [pg/ μ l]	Molarity [pmol/l]	Color
291	1,071	3,853	520.3	77	37.4	455.39	810.6	

Assay Class: High Sensitivity DNA Assay
 Data Path: C:\...ents and Settings\Bioanalyzer\2014-09-24\2014-09-24_006.xad

Created: 9/24/2014 3:34:07 PM
 Modified: 9/24/2014 4:17:53 PM

Electropherogram Summary Continued ...



Overall Results for sample 6 : sample 24

Number of peaks found: 23 Corr. Area 1: 1,884.9
 Noise: 0.9

Peak table for sample 6 : sample 24


Peak	Size [bp]	Conc. [pg/μl]	Molarity [pmol/l]	Observations
1	35	125.00	5,411.3	Lower Marker
2	364	481.08	2,001.1	
3	377	168.71	677.9	
4	388	179.31	699.8	
5	410	465.39	1,720.8	
6	471	356.71	1,147.4	
7	607	46.42	115.8	
8	643	29.04	68.5	
9	734	28.98	59.9	
10	837	24.67	44.7	
11	947	21.39	34.2	
12	1,081	24.49	34.3	
13	1,204	25.00	31.5	
14	1,550	71.46	69.8	
15	1,688	41.04	36.8	
16	1,796	31.13	26.3	
17	1,919	33.03	26.1	
18	2,155	101.32	71.2	
19	3,947	19.54	7.5	
20	5,211	37.97	11.0	
21	6,883	9.46	2.1	
22	7,355	14.30	2.9	
23	8,393	8.95	1.6	
24	10,380	75.00	10.9	Upper Marker
25	12,728	0.00	0.0	

Assay Class: High Sensitivity DNA Assay
Data Path: C:\...ents and Settings\Bioanalyzer\2014-09-24\2014-09-24_006.xad

Created: 9/24/2014 3:34:07 PM
Modified: 9/24/2014 4:17:53 PM

Electropherogram Summary Continued ...

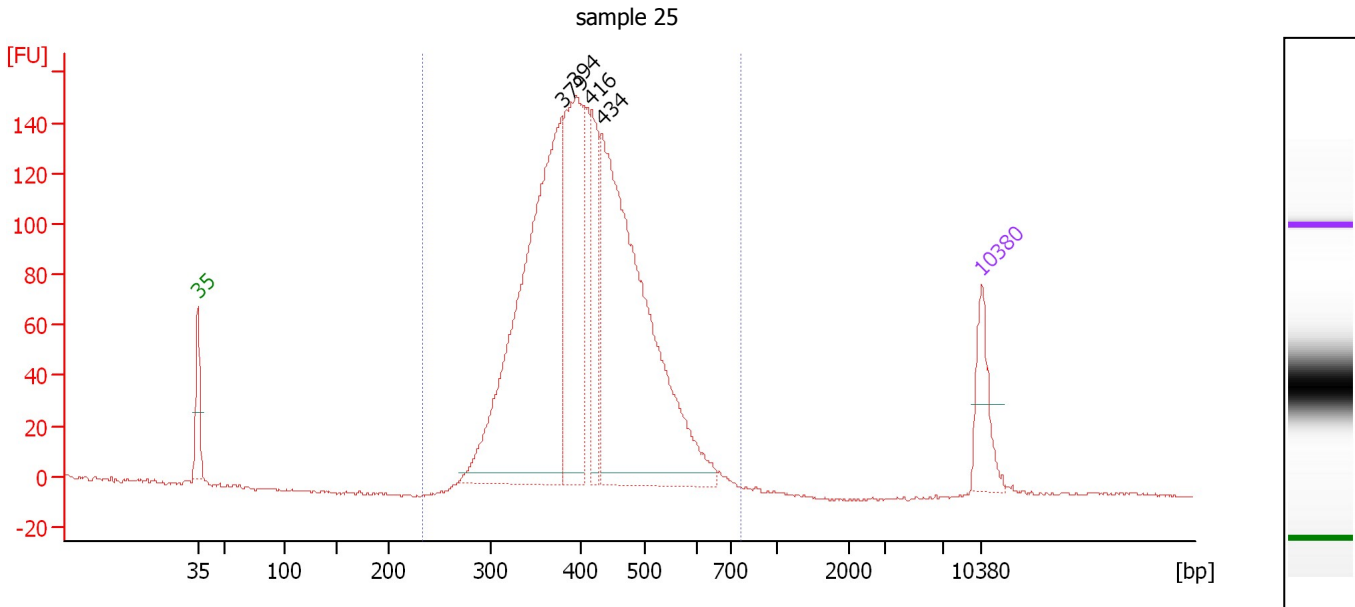
... Region table for sample 6 : sample 24

From [bp]	Average Size [bp]	To [bp]	Corr. Area	% of Total	Size distribution in CV [%]	Conc. [pg/ μ l]	Molarity [pmol/l]	Color
265	439	715	1,884.9	71	20.5	1,999.25	7,253.6	

Assay Class: High Sensitivity DNA Assay
 Data Path: C:\...ents and Settings\Bioanalyzer\2014-09-24\2014-09-24_006.xad

Created: 9/24/2014 3:34:07 PM
 Modified: 9/24/2014 4:17:53 PM

Electropherogram Summary Continued ...



Overall Results for sample 7 : sample 25

Number of peaks found: 4 Corr. Area 1: 2,316.4
 Noise: 0.6

Peak table for sample 7 : sample 25

Peak	Size [bp]	Conc. [pg/μl]	Molarity [pmol/l]	Observations
1	35	125.00	5,411.3	Lower Marker
2	379	954.35	3,811.1	
3	394	427.27	1,642.4	
4	416	179.53	653.9	
5	434	908.51	3,175.0	
6	10,380	75.00	10.9	Upper Marker

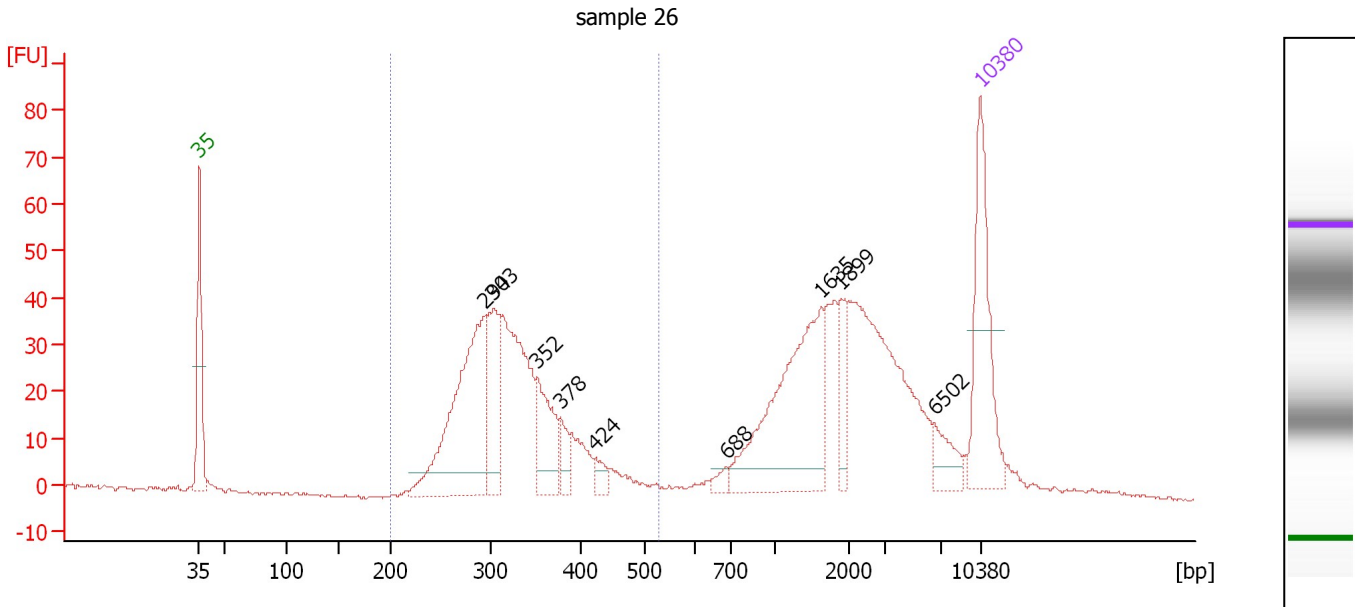
Region table for sample 7 : sample 25

From [bp]	Average Size [bp]	To [bp]	Corr. Area	% of Total	Size distribution in CV [%]	Conc. [pg/μl]	Molarity [pmol/l]	Color
234	417	766	2,316.4	99	17.5	2,663.42	10,037.5	Blue

Assay Class: High Sensitivity DNA Assay
 Data Path: C:\...ents and Settings\Bioanalyzer\2014-09-24\2014-09-24_006.xad

Created: 9/24/2014 3:34:07 PM
 Modified: 9/24/2014 4:17:53 PM

Electropherogram Summary Continued ...



Overall Results for sample 8 : sample 26

Number of peaks found: 9 Corr. Area 1: 515.9
 Noise: 0.4

Peak table for sample 8 : sample 26

Peak	Size [bp]	Conc. [pg/μl]	Molarity [pmol/l]	Observations
1	35	125.00	5,411.3	Lower Marker
2	294	200.63	1,033.6	
3	303	76.41	381.5	
4	352	58.73	252.8	
5	378	16.52	66.2	
6	424	11.00	39.3	
7	688	6.77	14.9	
8	1,635	142.27	131.8	
9	1,899	19.81	15.8	
10	6,502	18.61	4.3	
11	10,380	75.00	10.9	Upper Marker

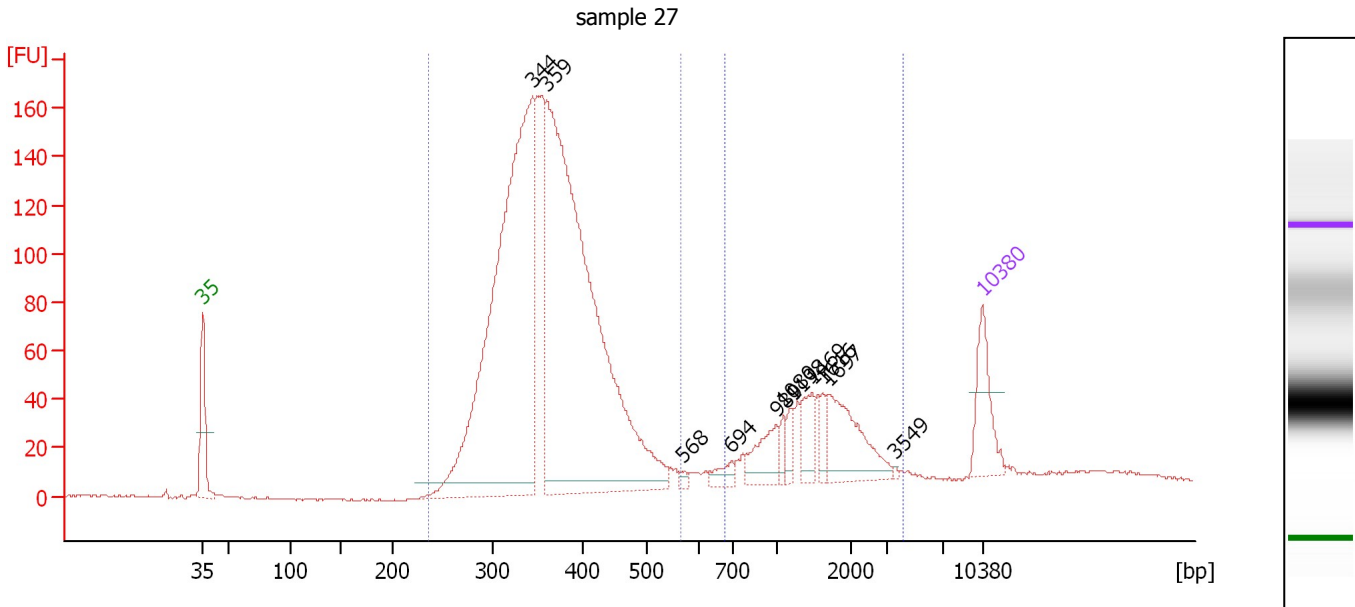
Region table for sample 8 : sample 26

From [bp]	Average Size [bp]	To [bp]	Corr. Area	% of Total	Size distribution in CV [%]	Conc. [pg/μl]	Molarity [pmol/l]	Color
200	326	528	515.9	47	16.2	551.50	2,643.4	Blue

Assay Class: High Sensitivity DNA Assay
 Data Path: C:\...ents and Settings\Bioanalyzer\2014-09-24\2014-09-24_006.xad

Created: 9/24/2014 3:34:07 PM
 Modified: 9/24/2014 4:17:53 PM

Electropherogram Summary Continued ...



Overall Results for sample 9 : sample 27

Number of peaks found: 11 Corr. Area 1: 2,093.4
 Noise: 0.4 Corr. Area 2: 366.3

Peak table for sample 9 : sample 27

Peak	Size [bp]	Conc. [pg/μl]	Molarity [pmol/l]	Observations
1	35	125.00	5,411.3	Lower Marker
2	344	1,202.39	5,297.4	
3	359	1,341.43	5,656.2	
4	568	7.24	19.3	
5	694	23.69	51.7	
6	989	60.19	92.2	
7	1,080	17.64	24.7	
8	1,198	20.88	26.4	
9	1,469	46.99	48.5	
10	1,616	21.54	20.2	
11	1,697	118.34	105.7	
12	3,549	2.44	1.0	
13	10,380	75.00	10.9	Upper Marker

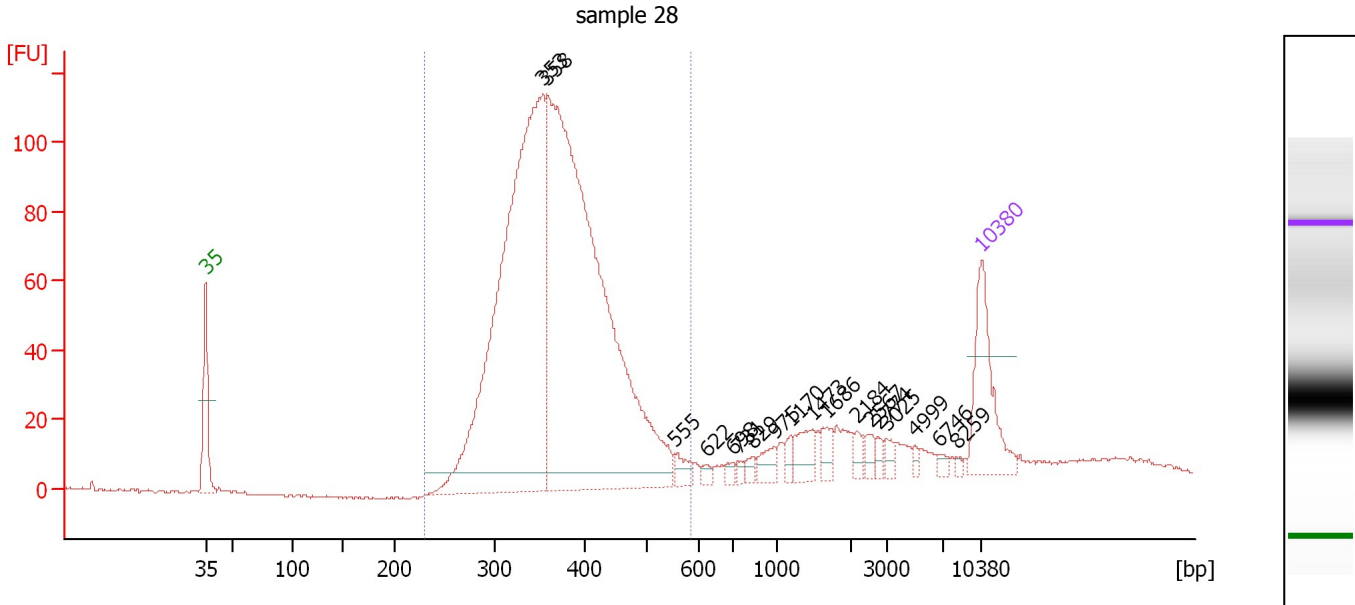
Region table for sample 9 : sample 27

From [bp]	Average Size [bp]	To [bp]	Corr. Area	% of Total	Size distribution in CV [%]	Conc. [pg/μl]	Molarity [pmol/l]	Color
235	363	565	2,093.4	82	14.6	2,721.14	11,646.6	Blue
673	1,571	4,141	366.3	14	39.3	358.99	404.1	Blue

Assay Class: High Sensitivity DNA Assay
 Data Path: C:\...ents and Settings\Bioanalyzer\2014-09-24\2014-09-24_006.xad

Created: 9/24/2014 3:34:07 PM
 Modified: 9/24/2014 4:17:53 PM

Electropherogram Summary Continued ...



Overall Results for sample 10 : sample 28

Number of peaks found: 18 Corr. Area 1: 1,492.1
 Noise: 0.3

Peak table for sample 10 : sample 28

Peak	Size [bp]	Conc. [pg/μl]	Molarity [pmol/l]	Observations
1	35	125.00	5,411.3	Lower Marker
2	353	804.89	3,450.6	
3	358	986.03	4,170.8	
4	555	15.23	41.6	
5	622	6.22	15.2	
6	698	6.47	14.0	
7	731	5.02	10.4	
8	829	6.77	12.4	
9	975	15.95	24.8	
10	1,170	9.37	12.1	
11	1,473	24.71	25.4	
12	1,686	14.95	13.4	
13	2,184	9.04	6.3	
14	2,567	8.85	5.2	
15	2,774	6.43	3.5	
16	3,025	7.66	3.8	
17	4,999	4.13	1.3	
18	6,746	5.49	1.2	
19	8,259	2.82	0.5	
20	10,380	75.00	10.9	Upper Marker

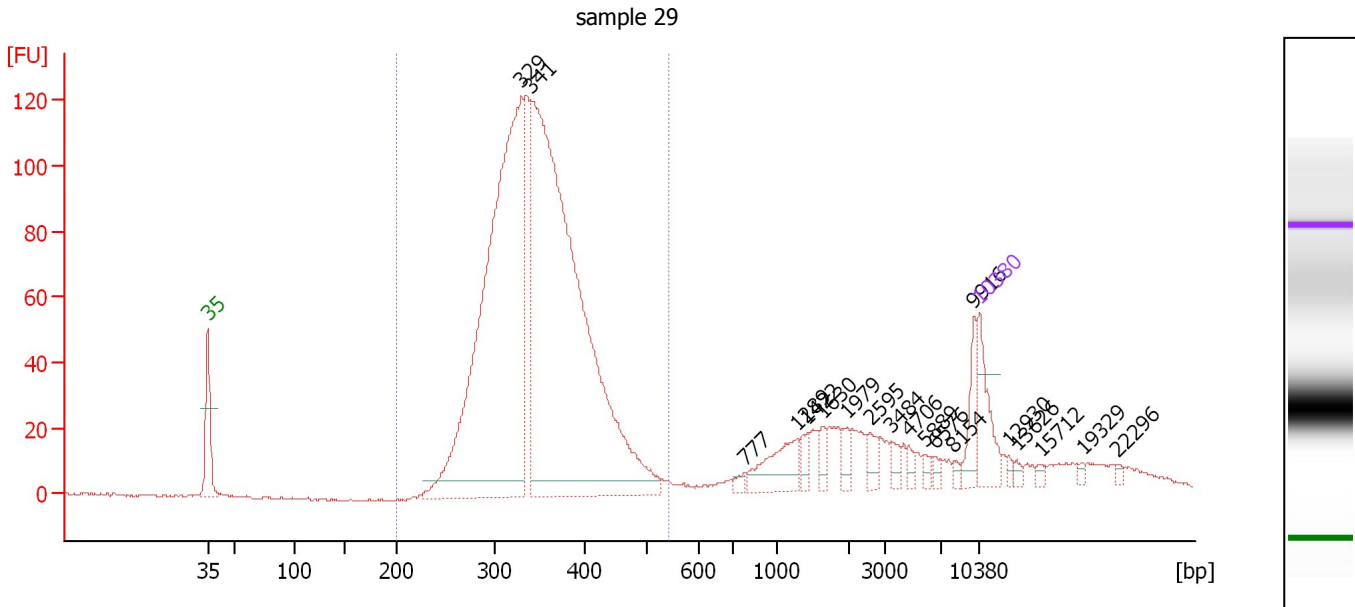
Region table for sample 10 : sample 28

From [bp]	Average Size [bp]	To [bp]	Corr. Area	% of Total	Size distribution in CV [%]	Conc. [pg/μl]	Molarity [pmol/l]	Color
229	372	584	1,492.1	86	15.3	1,684.76	7,041.8	Blue

Assay Class: High Sensitivity DNA Assay
 Data Path: C:\...ents and Settings\Bioanalyzer\2014-09-24\2014-09-24_006.xad

Created: 9/24/2014 3:34:07 PM
 Modified: 9/24/2014 4:17:53 PM

Electropherogram Summary Continued ...



Overall Results for sample 11 : sample 29

Number of peaks found: 19 Corr. Area 1: 1,529.1
 Noise: 0.4

Peak table for sample 11 : sample 29

Peak	Size [bp]	Conc. [pg/μl]	Molarity [pmol/l]	Observations
1	35	125.00	5,411.3	Lower Marker
2	329	1,358.79	6,266.7	
3	341	1,660.20	7,387.1	
4	777	11.28	22.0	
5	1,289	83.39	98.0	
6	1,422	22.57	24.0	
7	1,630	17.34	16.1	
8	1,979	19.72	15.1	
9	2,595	22.40	13.1	
10	3,484	16.69	7.3	
11	4,706	12.91	4.2	
12	5,889	9.63	2.5	
13	6,576	9.20	2.1	
14	8,154	6.56	1.2	
15	9,916	46.42	7.1	
16	10,380	75.00	10.9	Upper Marker
17	12,930	0.00	0.0	
18	13,626	0.00	0.0	
19	15,712	0.00	0.0	
20	19,329	0.00	0.0	
21	22,296	0.00	0.0	

Region table for sample 11 : sample 29

From [bp]	Average Size [bp]	To [bp]	Corr. Area	% of Total	Size distribution in CV [%]	Conc. [pg/μl]	Molarity [pmol/l]	Color
200	347	542	1,529.1	81	14.2	3,063.90	13,679.2	Blue

Assay Class: High Sensitivity DNA Assay
Data Path: C:\...ents and Settings\Bioanalyzer\2014-09-24\2014-09-24_006.xad

Created: 9/24/2014 3:34:07 PM
Modified: 9/24/2014 4:17:53 PM

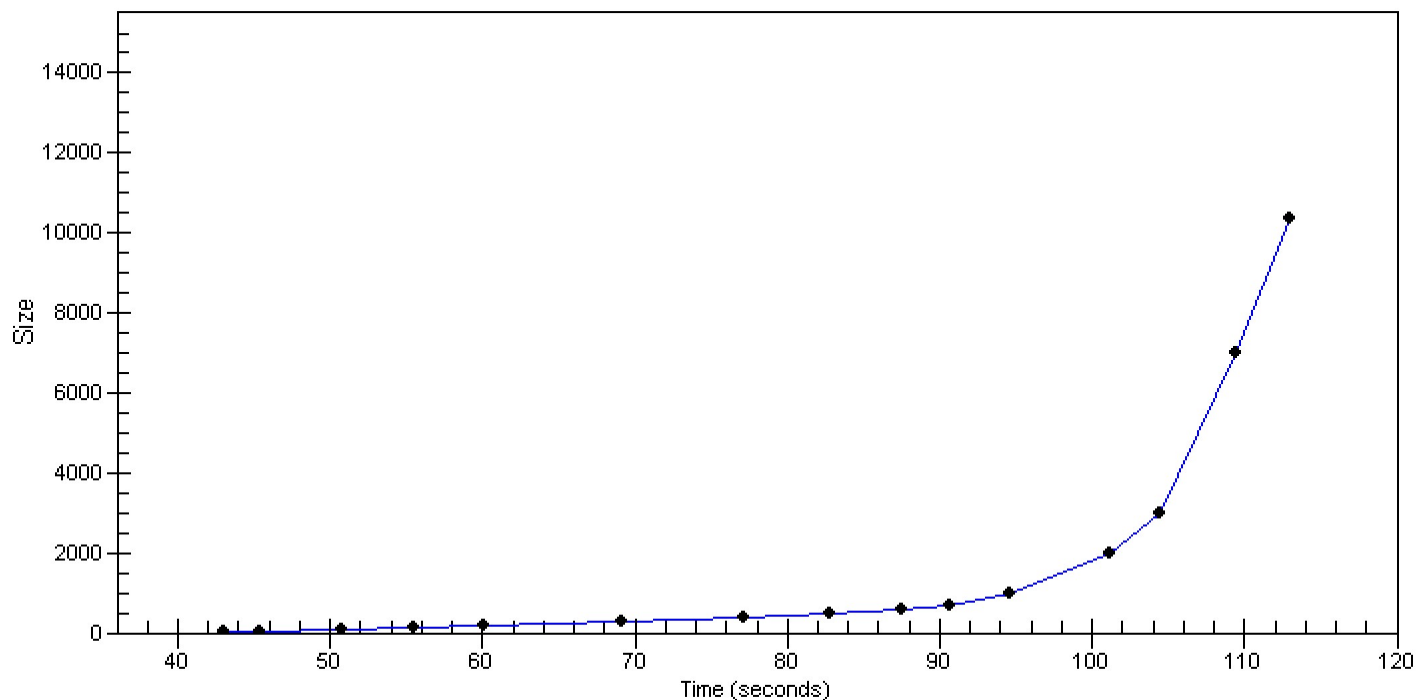
Gel Image

Assay Class: High Sensitivity DNA Assay
Data Path: C:\...ents and Settings\Bioanalyzer\2014-09-24\2014-09-24_006.xad

Created: 9/24/2014 3:34:07 PM
Modified: 9/24/2014 4:17:53 PM

Curves

Standard Curve



Assay Class: High Sensitivity DNA Assay
 Data Path: C:\...ents and Settings\Bioanalyzer\2014-09-24\2014-09-24_006.xad

Created: 9/24/2014 3:34:07 PM
 Modified: 9/24/2014 4:17:53 PM

Run Logbook

Description	Number	Source	Category	Sub Category	Time	Time Zone	User	Host
Run ended on port 1 (Number of wells acquired: 12)		Instrument	Run		9/24/2014 4:15:25 PM	(GMT --07:00) Pacific Standard Time	UC Davis	D8XSMGH1
Run started on port 1 (File: C:\Documents and Settings\Bioanalyzer\2014-09-24\2014-09-24_006.xad)		Instrument	Run		9/24/2014 3:34:12 PM	(GMT --07:00) Pacific Standard Time	UC Davis	D8XSMGH1
Product Number : G2938B		Instrument	Run		9/24/2014 3:34:12 PM	(GMT --07:00) Pacific Standard Time	UC Davis	D8XSMGH1
Name :		Instrument	Run		9/24/2014 3:34:12 PM	(GMT --07:00) Pacific Standard Time	UC Davis	D8XSMGH1
Vendor : Agilent Technologies		Instrument	Run		9/24/2014 3:34:12 PM	(GMT --07:00) Pacific Standard Time	UC Davis	D8XSMGH1
Serial# : DE13701086		Instrument	Run		9/24/2014 3:34:12 PM	(GMT --07:00) Pacific Standard Time	UC Davis	D8XSMGH1
Firmware : C.01.069		Instrument	Run		9/24/2014 3:34:12 PM	(GMT --07:00) Pacific Standard Time	UC Davis	D8XSMGH1
Cartridge : Electrode		Instrument	Run		9/24/2014 3:34:12 PM	(GMT --07:00) Pacific Standard Time	UC Davis	D8XSMGH1