

Assay Class: High Sensitivity DNA Assay  
Data Path: C:\...ents and Settings\Bioanalyzer\2014-09-25\2014-09-25\_002.xad

Created: 9/25/2014 9:25:29 AM  
Modified: 9/25/2014 10:07:57 AM

**Electrophoresis File Run Summary**

Instrument Information:

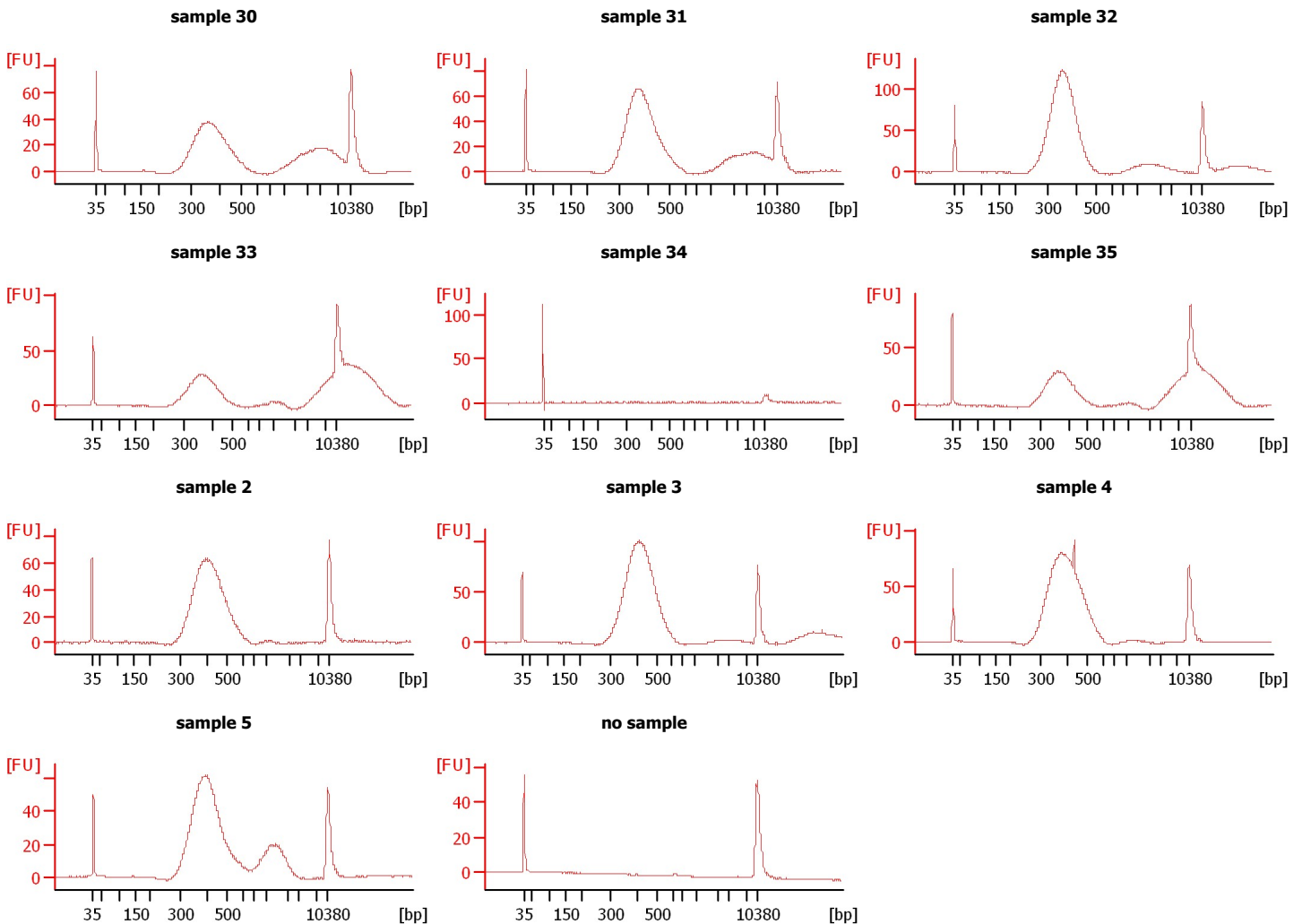
Instrument Name: DE13701086      Firmware: C.01.069  
Serial#: DE13701086      Type: G2938B

Assay Information:

Assay Origin Path: C:\Program Files\Agilent\2100 bioanalyzer\2100 expert\assays\dsDNA\High Sensitivity DNA.xsy  
Assay Class: High Sensitivity DNA Assay  
Version: 1.03  
Assay Comments: Copyright © 2003-2010 Agilent Technologies

Chip Information:

Chip Lot #:  
Reagent Kit Lot #:  
Chip Comments:



Assay Class: High Sensitivity DNA Assay  
 Data Path: C:\...ents and Settings\Bioanalyzer\2014-09-25\2014-09-25\_002.xad

Created: 9/25/2014 9:25:29 AM  
 Modified: 9/25/2014 10:07:57 AM

**Electrophoresis File Run Summary (Chip Summary)**

Sample Name	Sample Comment	Rest. Digest	Status	Observation	Result Label	Result Color
sample 30		<input type="checkbox"/>	✓			
sample 31		<input type="checkbox"/>	✓			
sample 32		<input type="checkbox"/>	✓			
sample 33		<input type="checkbox"/>	✓			
sample 34		<input type="checkbox"/>	✓			
sample 35		<input type="checkbox"/>	✓			
sample 2		<input type="checkbox"/>	✓			
sample 3		<input type="checkbox"/>	✓			
sample 4		<input type="checkbox"/>	✓			
sample 5		<input type="checkbox"/>	✓			
no sample		<input type="checkbox"/>	✓			
Ladder		<input type="checkbox"/>	✓			

**Chip Lot #**

**Reagent Kit Lot #**

**Chip Comments :**

Assay Class: High Sensitivity DNA Assay  
Data Path: C:\...ents and Settings\Bioanalyzer\2014-09-25\2014-09-25\_002.xad

Created: 9/25/2014 9:25:29 AM  
Modified: 9/25/2014 10:07:57 AM

**Electrophoresis Assay Details**

**General Analysis Settings**

Number of Available Sample and Ladder Wells (Max.) : 12  
Minimum Visible Range [s] : 32  
Maximum Visible Range [s] : 138  
Start Analysis Time Range [s] : 33  
End Analysis Time Range [s] : 137.5  
Ladder Concentration [pg/μl] : 1950  
Uses Standard Area for Ladder Fragments  
Lower Marker Concentration [pg/μl] : 125  
Upper Marker Concentration [pg/μl] : 75  
Used Upper Marker for Quantitation  
Standard Curve Fit is Point to Point  
Show Data Aligned to Lower and Upper Marker

**Integrator Settings**

Integration Start Time [s] : 33.05  
Integration End Time [s] : 137  
Slope Threshold : 0.8  
Height Threshold [FU] : 5  
Area Threshold : 0.1  
Width Threshold [s] : 0.6  
Baseline Plateau [s] : 0.5

**Filter Settings**

Filter Width [s] : 0.5  
Polynomial Order : 4

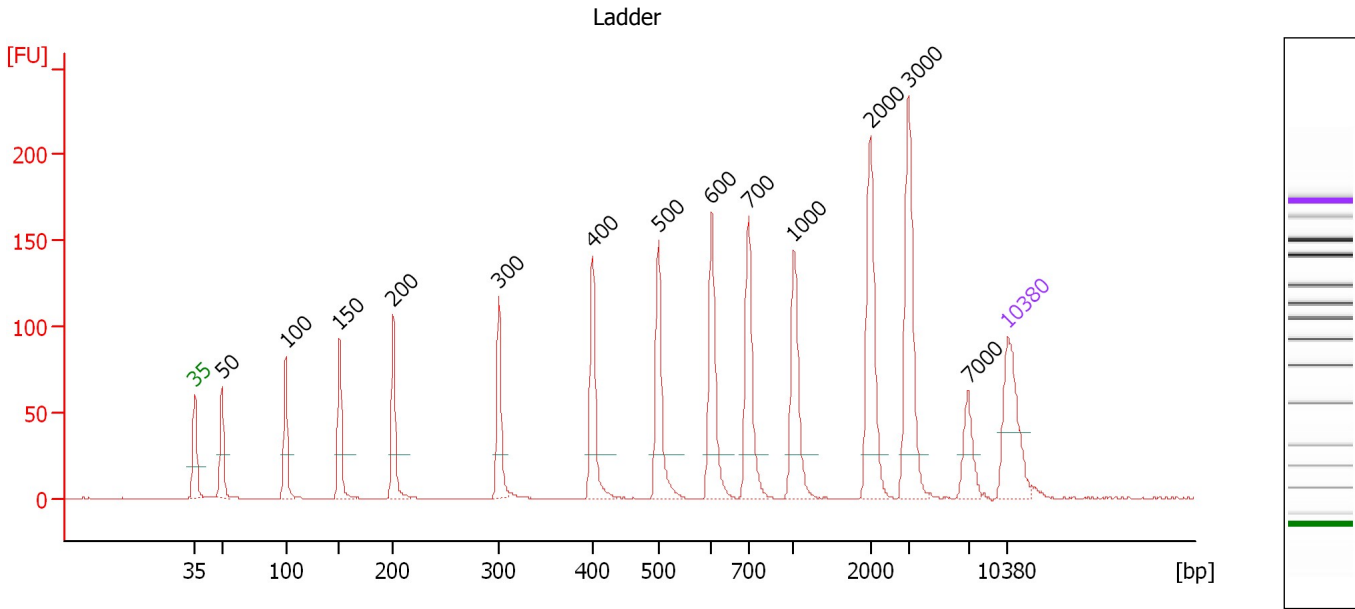
**Ladder**

Ladder Peak	Size	Area
1	35	160
2	50	210
3	100	208
4	150	221
5	200	242
6	300	270
7	400	305
8	500	306
9	600	336
10	700	321
11	1000	366
12	2000	413
13	3000	411
14	7000	400
15	10380	214

Assay Class: High Sensitivity DNA Assay  
 Data Path: C:\...ents and Settings\Bioanalyzer\2014-09-25\2014-09-25\_002.xad

Created: 9/25/2014 9:25:29 AM  
 Modified: 9/25/2014 10:07:57 AM

**Electropherogram Summary**



**Overall Results for Ladder**

Noise: 0.1

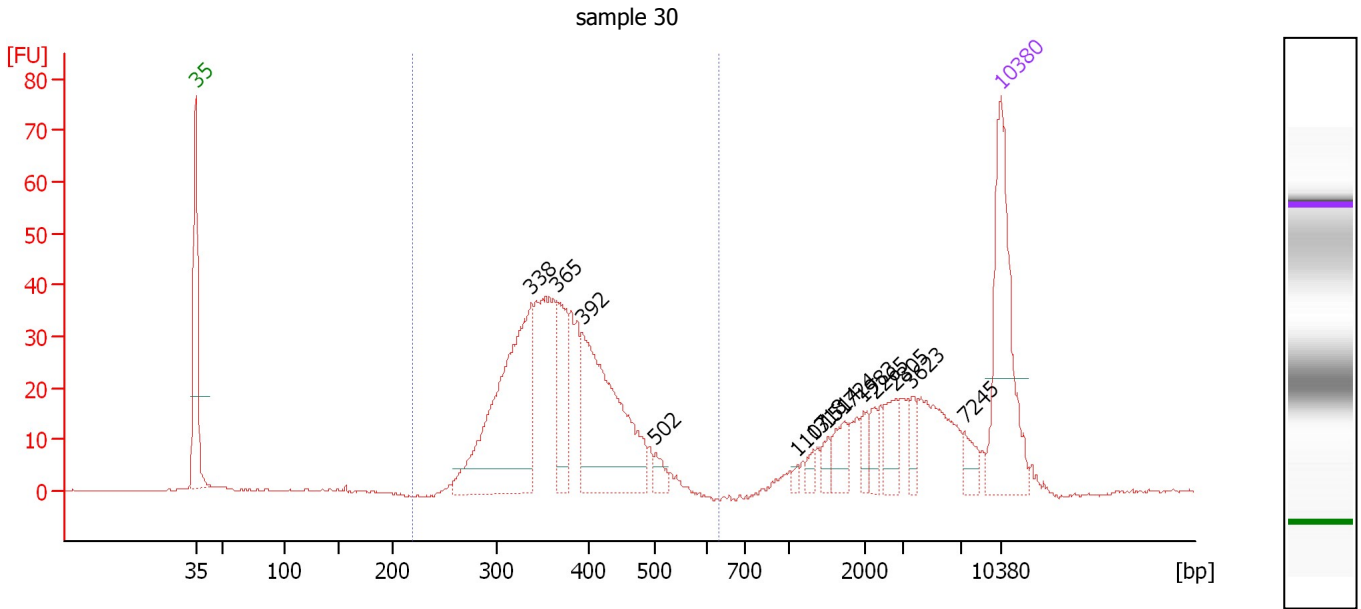
**Peak table for Ladder**

Peak	Size [bp]	Conc. [pg/μl]	Molarity [pmol/l]	Observations
1	35	125.00	5,411.3	Lower Marker
2	50	150.00	4,545.5	Ladder Peak
3	100	150.00	2,272.7	Ladder Peak
4	150	150.00	1,515.2	Ladder Peak
5	200	150.00	1,136.4	Ladder Peak
6	300	150.00	757.6	Ladder Peak
7	400	150.00	568.2	Ladder Peak
8	500	150.00	454.5	Ladder Peak
9	600	150.00	378.8	Ladder Peak
10	700	150.00	324.7	Ladder Peak
11	1,000	150.00	227.3	Ladder Peak
12	2,000	150.00	113.6	Ladder Peak
13	3,000	150.00	75.8	Ladder Peak
14	7,000	150.00	32.5	Ladder Peak
15	10,380	75.00	10.9	Upper Marker

Assay Class: High Sensitivity DNA Assay  
 Data Path: C:\...ents and Settings\Bioanalyzer\2014-09-25\2014-09-25\_002.xad

Created: 9/25/2014 9:25:29 AM  
 Modified: 9/25/2014 10:07:57 AM

**Electropherogram Summary Continued ...**



**Overall Results for sample 1 : sample 30**

Number of peaks found: 13                      Corr. Area 1: 550.6  
 Noise: 0.1

**Peak table for sample 1 : sample 30**

Peak	Size [bp]	Conc. [pg/μl]	Molarity [pmol/l]	Observations
1	35	125.00	5,411.3	Lower Marker
2	338	183.40	823.1	
3	365	51.01	211.6	
4	392	140.70	543.2	
5	502	9.36	28.2	
6	1,107	2.84	3.9	
7	1,318	5.63	6.5	
8	1,514	6.66	6.7	
9	1,724	13.64	12.0	
10	1,983	7.38	5.6	
11	2,265	8.28	5.5	
12	2,805	14.97	8.1	
13	3,623	8.51	3.6	
14	7,245	9.03	1.9	
15	10,380	75.00	10.9	Upper Marker

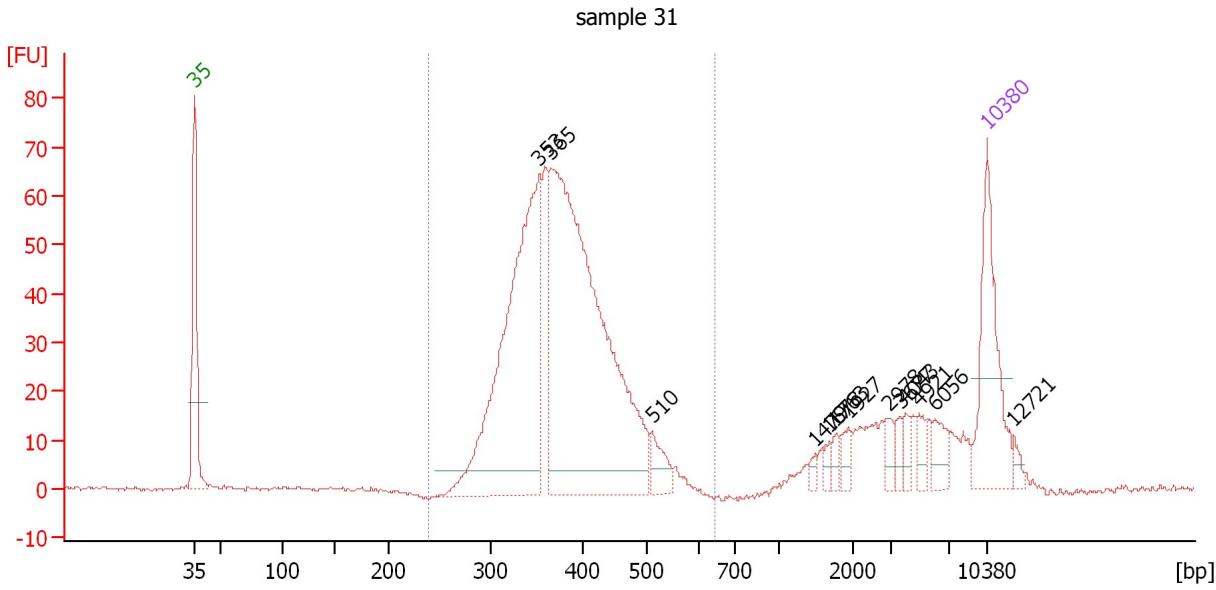
**Region table for sample 1 : sample 30**

From [bp]	Average Size [bp]	To [bp]	Corr. Area	% of Total	Size distribution in CV [%]	Conc. [pg/μl]	Molarity [pmol/l]	Color
220	371	633	550.6	71	15.3	531.85	2,233.4	Blue

Assay Class: High Sensitivity DNA Assay  
 Data Path: C:\...ents and Settings\Bioanalyzer\2014-09-25\2014-09-25\_002.xad

Created: 9/25/2014 9:25:29 AM  
 Modified: 9/25/2014 10:07:57 AM

**Electropherogram Summary Continued ...**



**Overall Results for sample 2 : sample 31**

Number of peaks found: 13                      Corr. Area 1: 846.8  
 Noise: 0.4

**Peak table for sample 2 : sample 31**

Peak	Size [bp]	Conc. [pg/μl]	Molarity [pmol/l]	Observations
1	35	125.00	5,411.3	Lower Marker
2	353	373.74	1,603.2	
3	365	545.83	2,262.7	
4	510	23.85	70.8	
5	1,479	4.24	4.3	
6	1,678	6.07	5.5	
7	1,763	6.12	5.3	
8	1,927	10.24	8.1	
9	2,978	9.07	4.6	
10	3,677	7.99	3.3	
11	4,043	7.23	2.7	
12	4,921	9.79	3.0	
13	6,056	15.77	3.9	
14	10,380	75.00	10.9	Upper Marker
15	12,721	0.00	0.0	

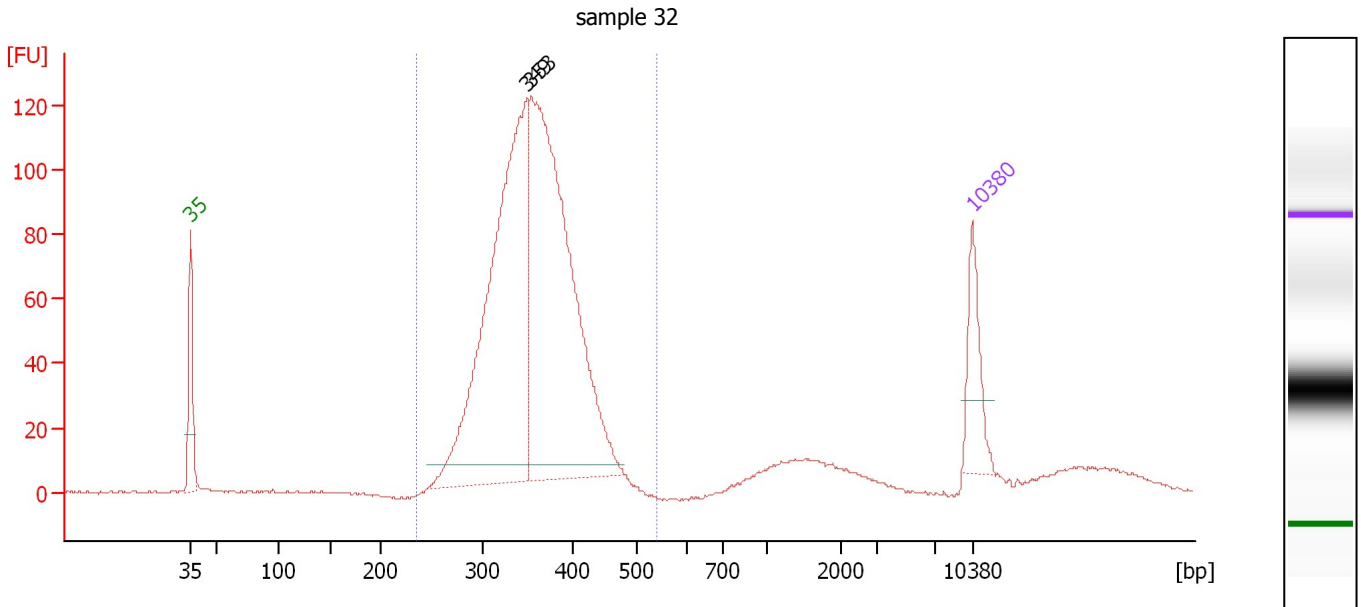
**Region table for sample 2 : sample 31**

From [bp]	Average Size [bp]	To [bp]	Corr. Area	% of Total	Size distribution in CV [%]	Conc. [pg/μl]	Molarity [pmol/l]	Color
239	381	644	846.8	82	14.6	953.02	3,881.1	Blue

Assay Class: High Sensitivity DNA Assay  
 Data Path: C:\...ents and Settings\Bioanalyzer\2014-09-25\2014-09-25\_002.xad

Created: 9/25/2014 9:25:29 AM  
 Modified: 9/25/2014 10:07:57 AM

**Electropherogram Summary Continued ...**



**Overall Results for sample 3 : sample 32**

Number of peaks found: 2                      Corr. Area 1: 1,412.0  
 Noise: 0.4

**Peak table for sample 3 : sample 32**

Peak	Size [bp]	Conc. [pg/μl]	Molarity [pmol/l]	Observations
1	35	125.00	5,411.3	Lower Marker
2	349	839.90	3,651.3	
3	353	930.22	3,989.5	
4	10,380	75.00	10.9	Upper Marker

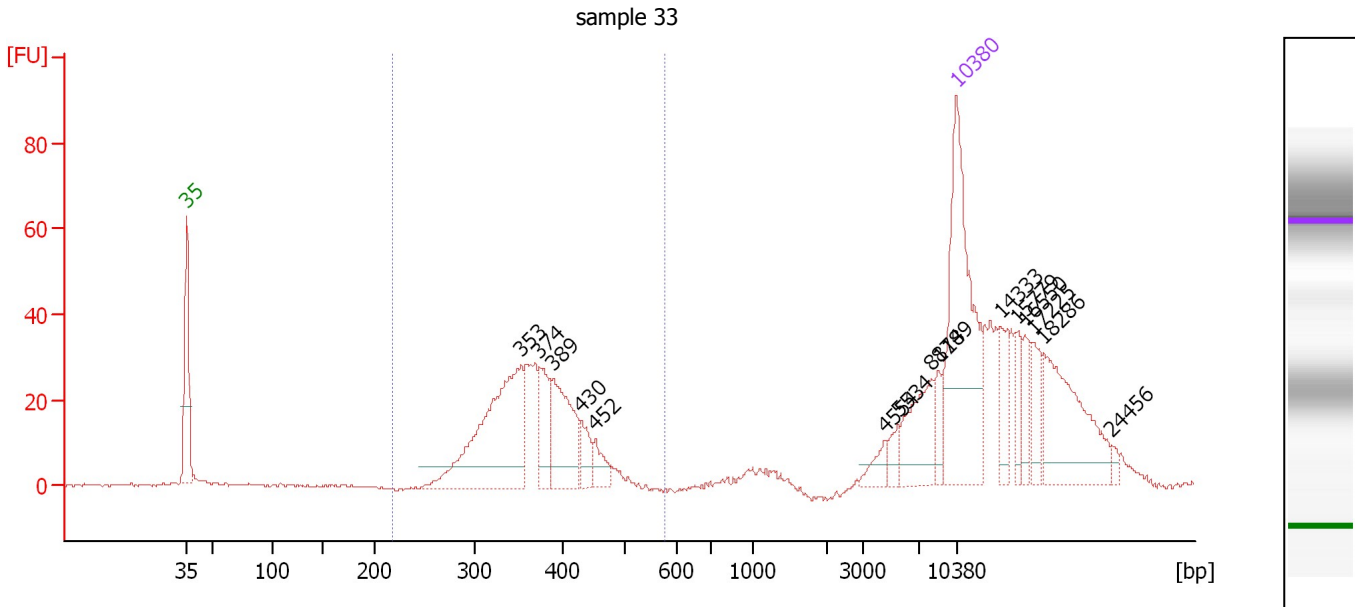
**Region table for sample 3 : sample 32**

From [bp]	Average Size [bp]	To [bp]	Corr. Area	% of Total	Size distribution in CV [%]	Conc. [pg/μl]	Molarity [pmol/l]	Color
234	356	538	1,412.0	90	12.0	1,870.97	8,102.8	Blue

Assay Class: High Sensitivity DNA Assay  
 Data Path: C:\...ents and Settings\Bioanalyzer\2014-09-25\2014-09-25\_002.xad

Created: 9/25/2014 9:25:29 AM  
 Modified: 9/25/2014 10:07:57 AM

**Electropherogram Summary Continued ...**



**Overall Results for sample 4 : sample 33**

Number of peaks found: 15                      Corr. Area 1: 362.2  
 Noise: 0.2

**Peak table for sample 4 : sample 33**

Peak	Size [bp]	Conc. [pg/μl]	Molarity [pmol/l]	Observations
1	35	125.00	5,411.3	Lower Marker
2	353	104.90	450.2	
3	374	24.75	100.4	
4	389	43.93	171.0	
5	430	11.30	39.8	
6	452	9.36	31.4	
7	4,554	6.46	2.1	
8	5,534	5.53	1.5	
9	8,114	25.38	4.7	
10	8,789	6.98	1.2	
11	10,380	75.00	10.9	Upper Marker
12	14,333	0.00	0.0	
13	15,779	0.00	0.0	
14	16,550	0.00	0.0	
15	17,225	0.00	0.0	
16	18,286	0.00	0.0	
17	24,456	0.00	0.0	

**Region table for sample 4 : sample 33**

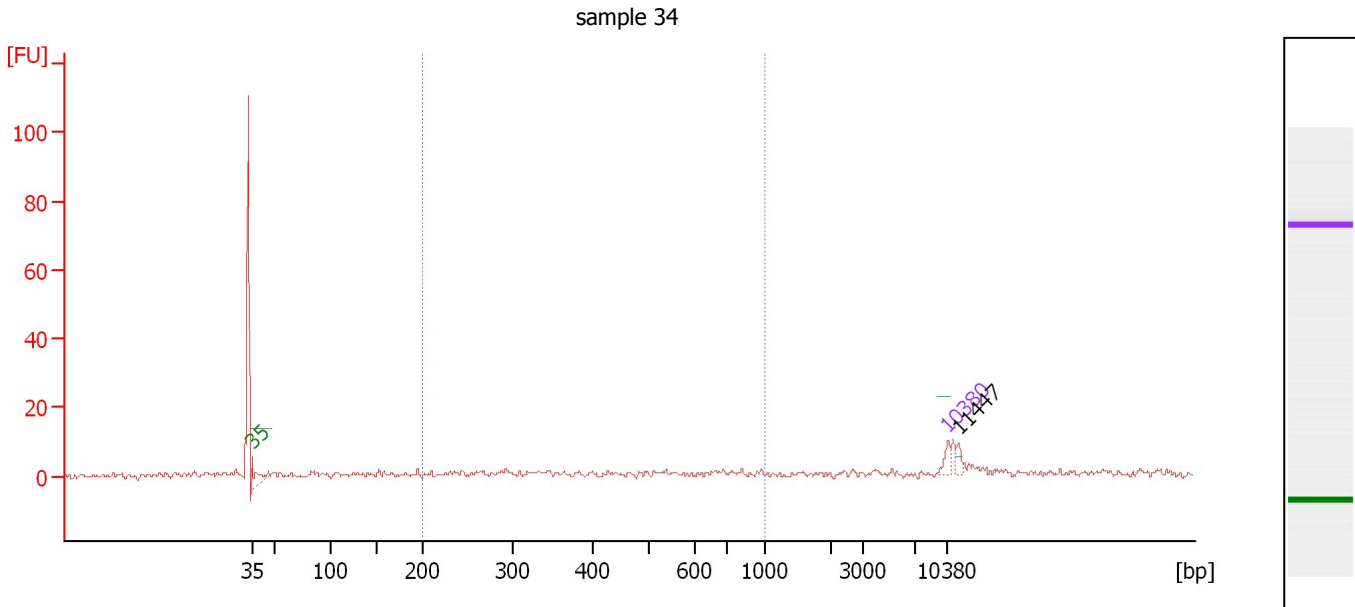
From [bp]	Average Size [bp]	To [bp]	Corr. Area	% of Total	Size distribution in CV [%]	Conc. [pg/μl]	Molarity [pmol/l]	Color
219	367	577	362.2	47	13.0	225.46	949.4	Blue



Assay Class: High Sensitivity DNA Assay  
 Data Path: C:\...ents and Settings\Bioanalyzer\2014-09-25\2014-09-25\_002.xad

Created: 9/25/2014 9:25:29 AM  
 Modified: 9/25/2014 10:07:57 AM

**Electropherogram Summary Continued ...**



**Overall Results for sample 5 : sample 34**

Number of peaks found: 2                      Corr. Area 1: 16.6  
 Noise: 0.7

**Peak table for sample 5 : sample 34**

Peak	Size [bp]	Conc. [pg/μl]	Molarity [pmol/l]	Observations
1	0	0.00	0.0	
2	35	125.00	5,411.3	Lower Marker
3	10,380	75.00	10.9	Upper Marker
4	11,447	0.00	0.0	

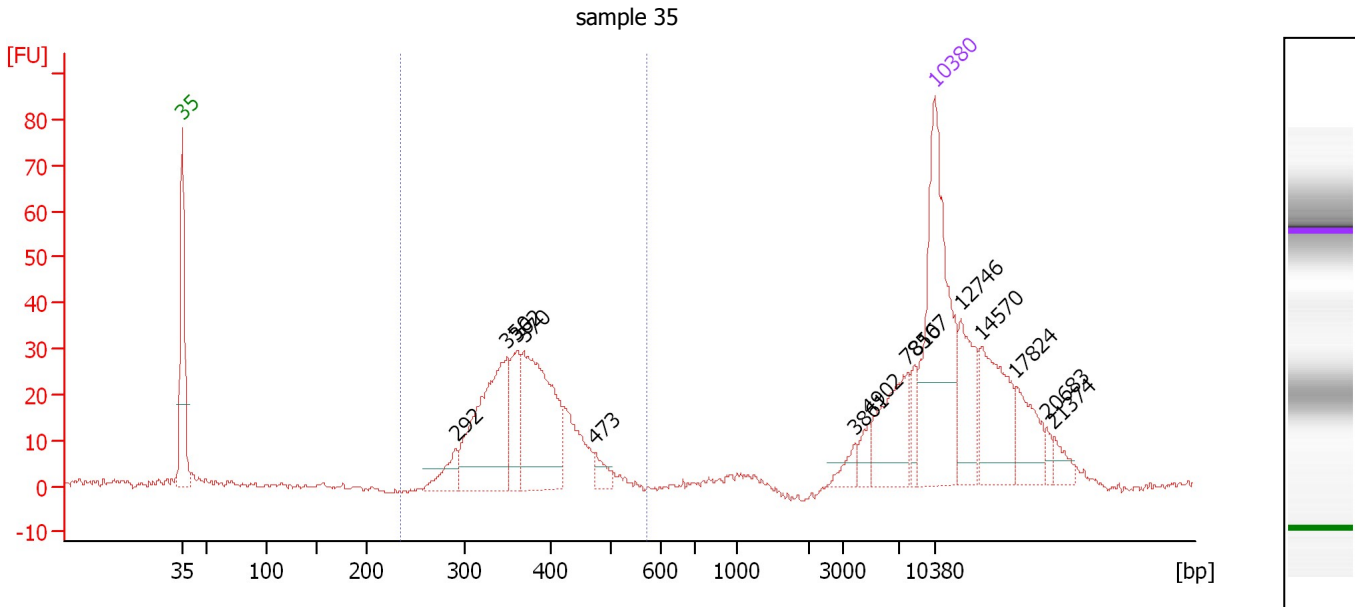
**Region table for sample 5 : sample 34**

From [bp]	Average Size [bp]	To [bp]	Corr. Area	% of Total	Size distribution in CV [%]	Conc. [pg/μl]	Molarity [pmol/l]	Color
200	440	1,000	16.6	16	44.4	358.46	1,556.7	■

Assay Class: High Sensitivity DNA Assay  
 Data Path: C:\...ents and Settings\Bioanalyzer\2014-09-25\2014-09-25\_002.xad

Created: 9/25/2014 9:25:29 AM  
 Modified: 9/25/2014 10:07:57 AM

**Electropherogram Summary Continued ...**



**Overall Results for sample 6 : sample 35**

Number of peaks found: 14                      Corr. Area 1: 347.7  
 Noise: 0.5

**Peak table for sample 6 : sample 35**

Peak	Size [bp]	Conc. [pg/μl]	Molarity [pmol/l]	Observations
1	35	125.00	5,411.3	Lower Marker
2	292	14.66	76.1	
3	350	86.31	373.8	
4	362	27.29	114.1	
5	370	85.78	351.6	
6	473	7.46	23.9	
7	3,861	6.03	2.4	
8	4,902	6.23	1.9	
9	7,816	30.10	5.8	
10	8,507	7.44	1.3	
11	10,380	75.00	10.9	Upper Marker
12	12,746	0.00	0.0	
13	14,570	0.00	0.0	
14	17,824	0.00	0.0	
15	20,683	0.00	0.0	
16	21,374	0.00	0.0	

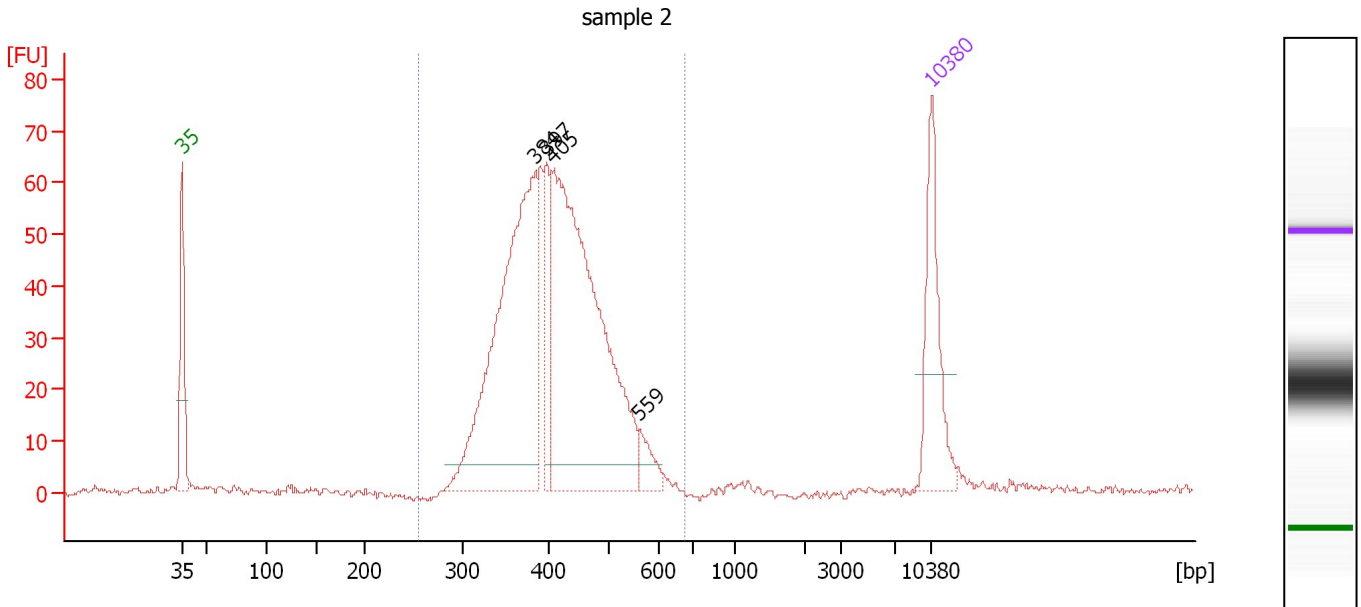
**Region table for sample 6 : sample 35**

From [bp]	Average Size [bp]	To [bp]	Corr. Area	% of Total	Size distribution in CV [%]	Conc. [pg/μl]	Molarity [pmol/l]	Color
236	372	573	347.7	54	12.8	227.31	943.4	Blue

Assay Class: High Sensitivity DNA Assay  
 Data Path: C:\...ents and Settings\Bioanalyzer\2014-09-25\2014-09-25\_002.xad

Created: 9/25/2014 9:25:29 AM  
 Modified: 9/25/2014 10:07:57 AM

**Electropherogram Summary Continued ...**



**Overall Results for sample 7 : sample 2**

Number of peaks found: 4                      Corr. Area 1: 859.4  
 Noise: 0.7

**Peak table for sample 7 : sample 2**

Peak	Size [bp]	Conc. [pg/μl]	Molarity [pmol/l]	Observations
1	35	125.00	5,411.3	Lower Marker
2	384	396.13	1,561.7	
3	397	65.21	248.7	
4	405	460.28	1,722.1	
5	559	22.70	61.5	
6	10,380	75.00	10.9	Upper Marker

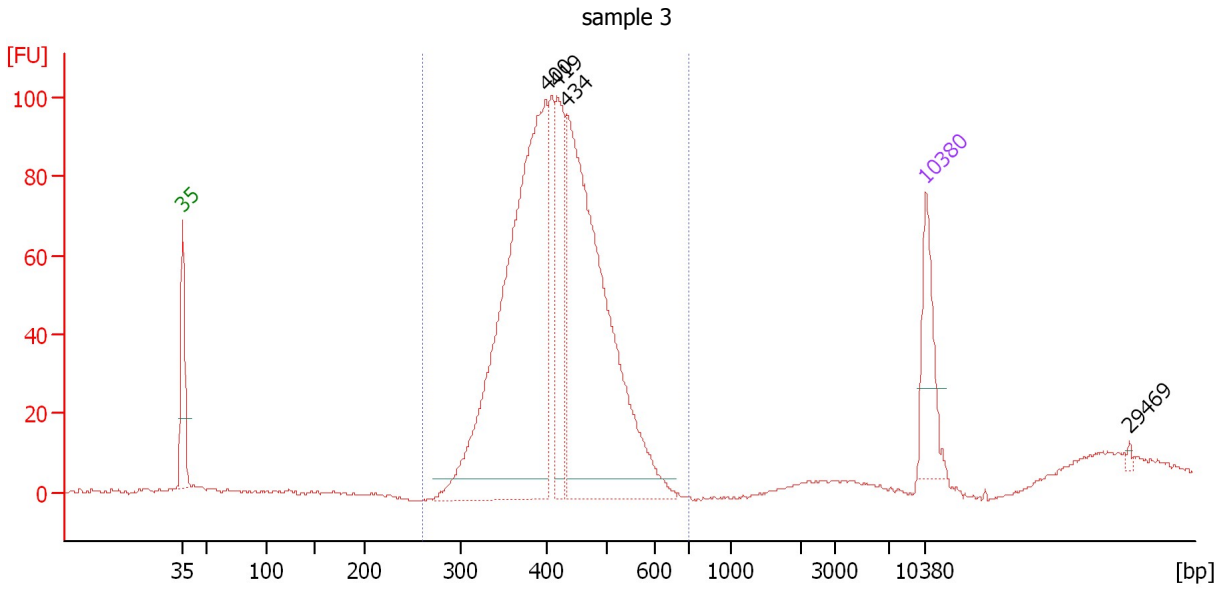
**Region table for sample 7 : sample 2**

From [bp]	Average Size [bp]	To [bp]	Corr. Area	% of Total	Size distribution in CV [%]	Conc. [pg/μl]	Molarity [pmol/l]	Color
254	415	677	859.4	96	15.5	1,003.19	3,767.1	Blue

Assay Class: High Sensitivity DNA Assay  
 Data Path: C:\...ents and Settings\Bioanalyzer\2014-09-25\2014-09-25\_002.xad

Created: 9/25/2014 9:25:29 AM  
 Modified: 9/25/2014 10:07:57 AM

**Electropherogram Summary Continued ...**



**Overall Results for sample 8 : sample 3**

Number of peaks found: 4                      Corr. Area 1: 1,220.3  
 Noise: 0.2

**Peak table for sample 8 : sample 3**

Peak	Size [bp]	Conc. [pg/μl]	Molarity [pmol/l]	Observations
1	35	125.00	5,411.3	Lower Marker
2	400	813.18	3,080.0	
3	419	172.53	624.6	
4	434	702.60	2,450.4	
5	10,380	75.00	10.9	Upper Marker
6	29,469	0.00	0.0	

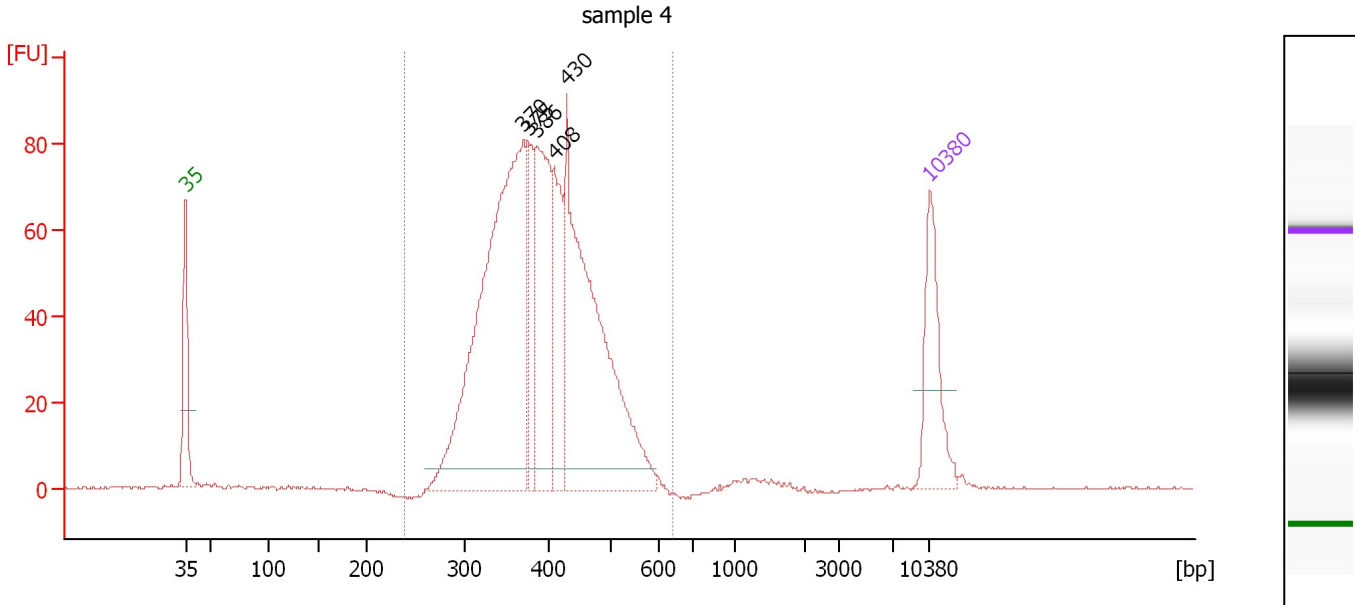
**Region table for sample 8 : sample 3**

From [bp]	Average Size [bp]	To [bp]	Corr. Area	% of Total	Size distribution in CV [%]	Conc. [pg/μl]	Molarity [pmol/l]	Color
260	421	705	1,220.3	98	14.0	1,675.97	6,179.7	Blue

Assay Class: High Sensitivity DNA Assay  
 Data Path: C:\...ents and Settings\Bioanalyzer\2014-09-25\2014-09-25\_002.xad

Created: 9/25/2014 9:25:29 AM  
 Modified: 9/25/2014 10:07:57 AM

**Electropherogram Summary Continued ...**



**Overall Results for sample 9 : sample 4**

Number of peaks found: 5                      Corr. Area 1: 1,207.4  
 Noise: 0.2

**Peak table for sample 9 : sample 4**

Peak	Size [bp]	Conc. [pg/μl]	Molarity [pmol/l]	Observations
1	35	125.00	5,411.3	Lower Marker
2	370	591.86	2,425.0	
3	375	79.85	322.3	
4	386	186.78	733.2	
5	408	113.40	421.6	
6	430	412.16	1,453.8	
7	10,380	75.00	10.9	Upper Marker

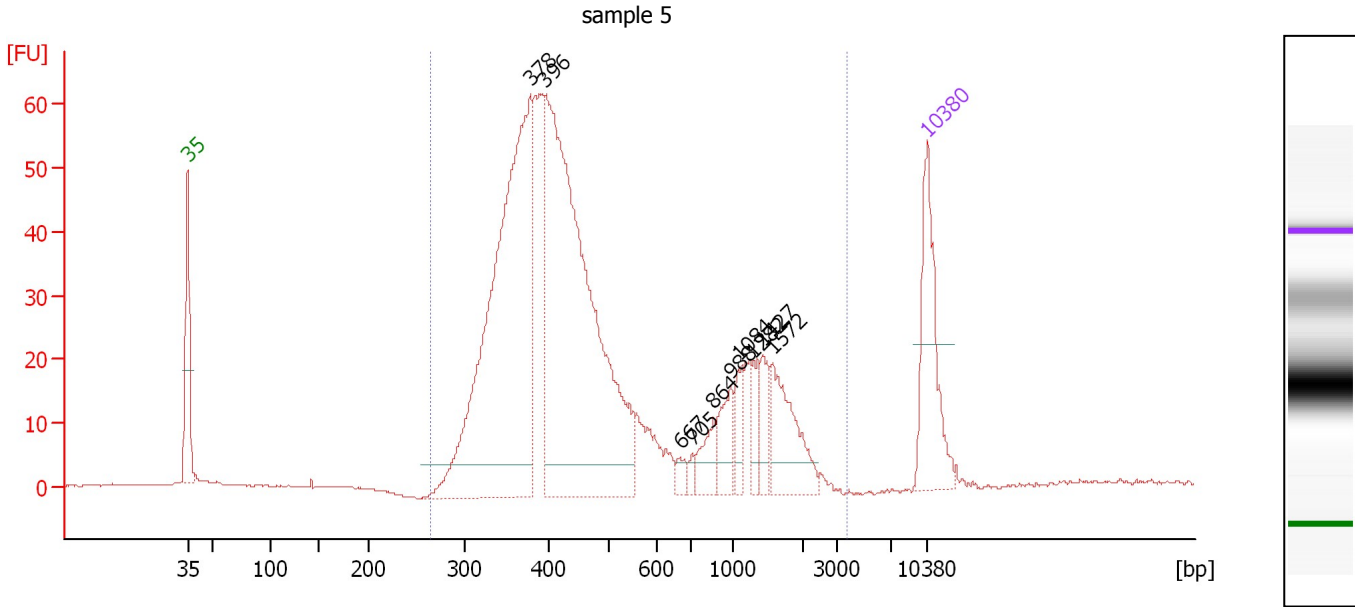
**Region table for sample 9 : sample 4**

From [bp]	Average Size [bp]	To [bp]	Corr. Area	% of Total	Size distribution in CV [%]	Conc. [pg/μl]	Molarity [pmol/l]	Color
240	397	641	1,207.4	98	16.0	1,405.85	5,534.8	Blue

Assay Class: High Sensitivity DNA Assay  
 Data Path: C:\...ents and Settings\Bioanalyzer\2014-09-25\2014-09-25\_002.xad

Created: 9/25/2014 9:25:29 AM  
 Modified: 9/25/2014 10:07:57 AM

**Electropherogram Summary Continued ...**



**Overall Results for sample 10 : sample 5**

Number of peaks found: 10                      Corr. Area 1: 958.0  
 Noise: 0.1

**Peak table for sample 10 : sample 5**

Peak	Size [bp]	Conc. [pg/μl]	Molarity [pmol/l]	Observations
1	35	125.00	5,411.3	Lower Marker
2	378	512.82	2,055.5	
3	396	564.67	2,162.7	
4	667	9.17	20.8	
5	705	5.85	12.6	
6	864	23.85	41.8	
7	988	29.04	44.5	
8	1,084	20.23	28.3	
9	1,282	17.35	20.5	
10	1,427	23.26	24.7	
11	1,572	61.67	59.4	
12	10,380	75.00	10.9	Upper Marker

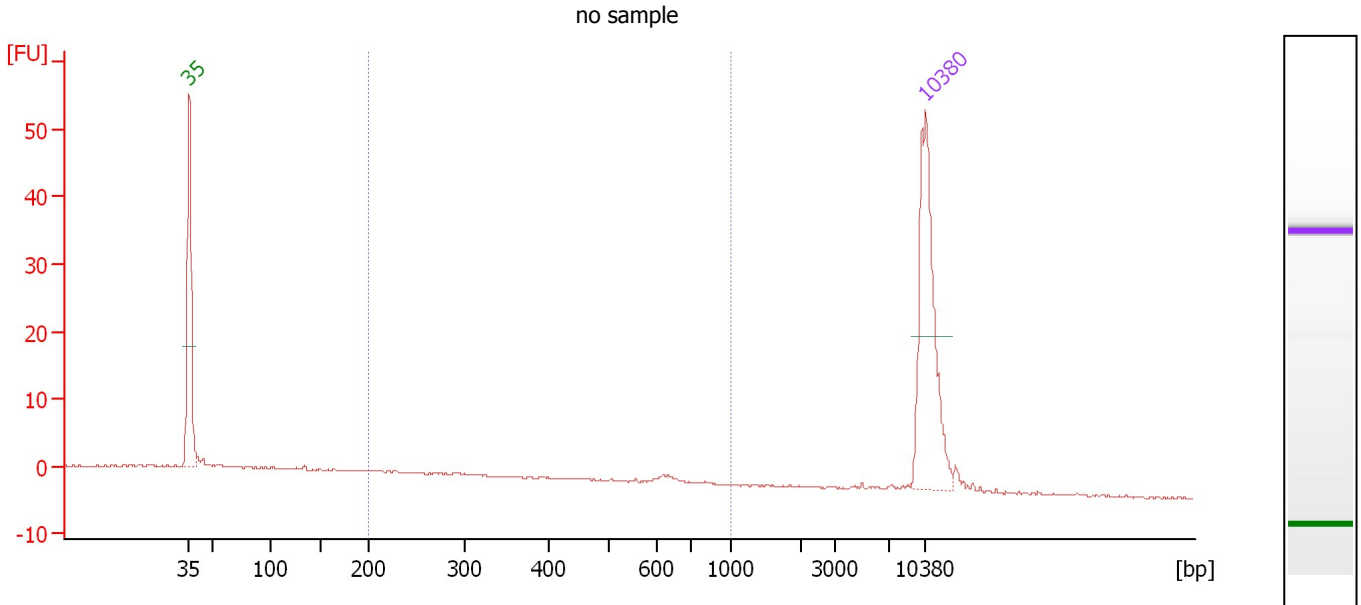
**Region table for sample 10 : sample 5**

From [bp]	Average Size [bp]	To [bp]	Corr. Area	% of Total	Size distribution in CV [%]	Conc. [pg/μl]	Molarity [pmol/l]	Color
265	590	3,811	958.0	99	70.0	1,369.70	4,773.0	Blue

Assay Class: High Sensitivity DNA Assay  
 Data Path: C:\...ents and Settings\Bioanalyzer\2014-09-25\2014-09-25\_002.xad

Created: 9/25/2014 9:25:29 AM  
 Modified: 9/25/2014 10:07:57 AM

**Electropherogram Summary Continued ...**



**Overall Results for sample 11 : no sample**

Number of peaks found: 0                      Corr. Area 1: 13.9  
 Noise: 0.1

**Peak table for sample 11 : no sample**

Peak	Size [bp]	Conc. [pg/μl]	Molarity [pmol/l]	Observations
1	35	125.00	5,411.3	Lower Marker
2	10,380	75.00	10.9	Upper Marker

**Region table for sample 11 : no sample**

From [bp]	Average Size [bp]	To [bp]	Corr. Area	% of Total	Size distribution in CV [%]	Conc. [pg/μl]	Molarity [pmol/l]	Color
200	411	1,000	13.9	32	42.0	19.94	93.3	Blue

Assay Class: High Sensitivity DNA Assay  
Data Path: C:\...ents and Settings\Bioanalyzer\2014-09-25\2014-09-25\_002.xad

Created: 9/25/2014 9:25:29 AM  
Modified: 9/25/2014 10:07:57 AM

**Gel Image**

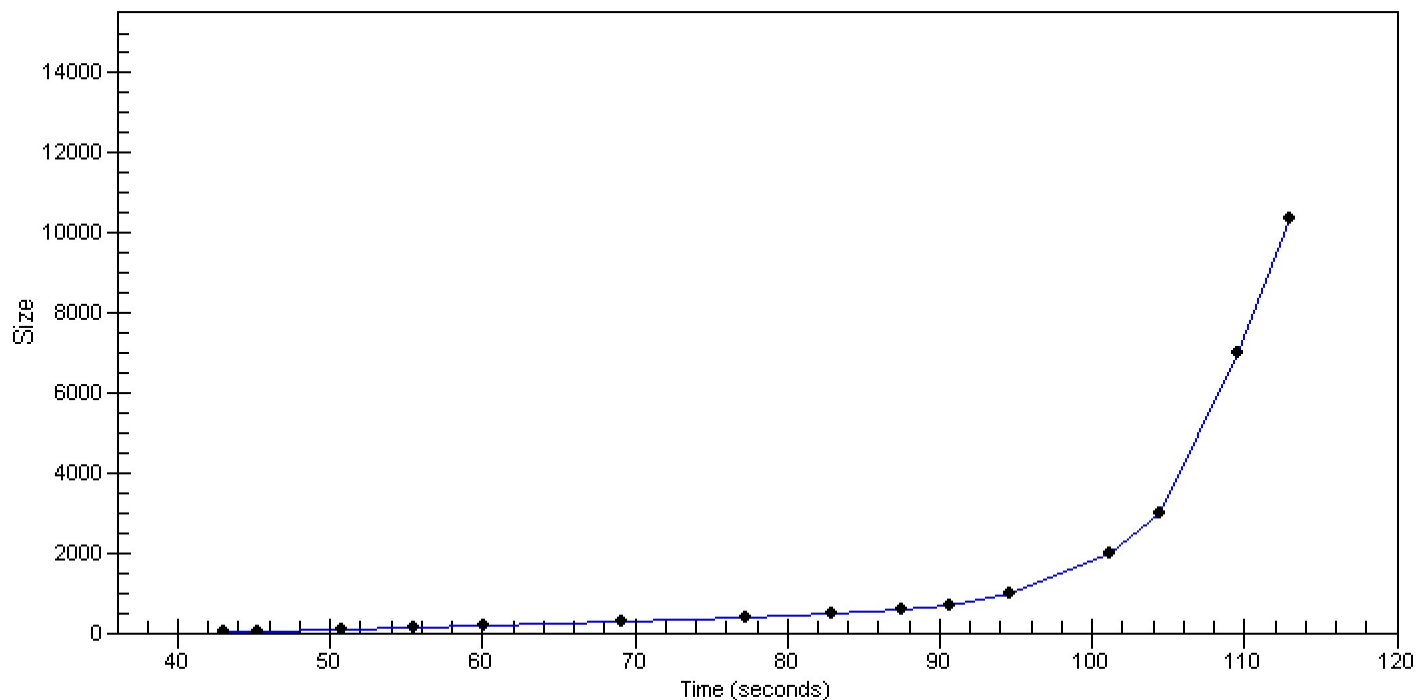


Assay Class: High Sensitivity DNA Assay  
Data Path: C:\...ents and Settings\Bioanalyzer\2014-09-25\2014-09-25\_002.xad

Created: 9/25/2014 9:25:29 AM  
Modified: 9/25/2014 10:07:57 AM

**Curves**

**Standard Curve**



Assay Class: High Sensitivity DNA Assay  
 Data Path: C:\...ents and Settings\Bioanalyzer\2014-09-25\2014-09-25\_002.xad

Created: 9/25/2014 9:25:29 AM  
 Modified: 9/25/2014 10:07:57 AM

**Run Logbook**

Description	Number	Source	Category	Sub Category	Time	Time Zone	User	Host
Run ended on port 1 (Number of wells acquired: 12)		Instrument	Run		9/25/2014 10:06:46 AM	(GMT --07:00) Pacific Standard Time	UC Davis	D8XSMGH1
Run started on port 1 (File: C:\Documents and Settings\Bioanalyzer\2014-09-25\2014-09-25_002.xad)		Instrument	Run		9/25/2014 9:25:34 AM	(GMT --07:00) Pacific Standard Time	UC Davis	D8XSMGH1
Product Number : G2938B		Instrument	Run		9/25/2014 9:25:34 AM	(GMT --07:00) Pacific Standard Time	UC Davis	D8XSMGH1
Name :		Instrument	Run		9/25/2014 9:25:34 AM	(GMT --07:00) Pacific Standard Time	UC Davis	D8XSMGH1
Vendor : Agilent Technologies		Instrument	Run		9/25/2014 9:25:34 AM	(GMT --07:00) Pacific Standard Time	UC Davis	D8XSMGH1
Serial# : DE13701086		Instrument	Run		9/25/2014 9:25:34 AM	(GMT --07:00) Pacific Standard Time	UC Davis	D8XSMGH1
Firmware : C.01.069		Instrument	Run		9/25/2014 9:25:34 AM	(GMT --07:00) Pacific Standard Time	UC Davis	D8XSMGH1
Cartridge : Electrode		Instrument	Run		9/25/2014 9:25:34 AM	(GMT --07:00) Pacific Standard Time	UC Davis	D8XSMGH1