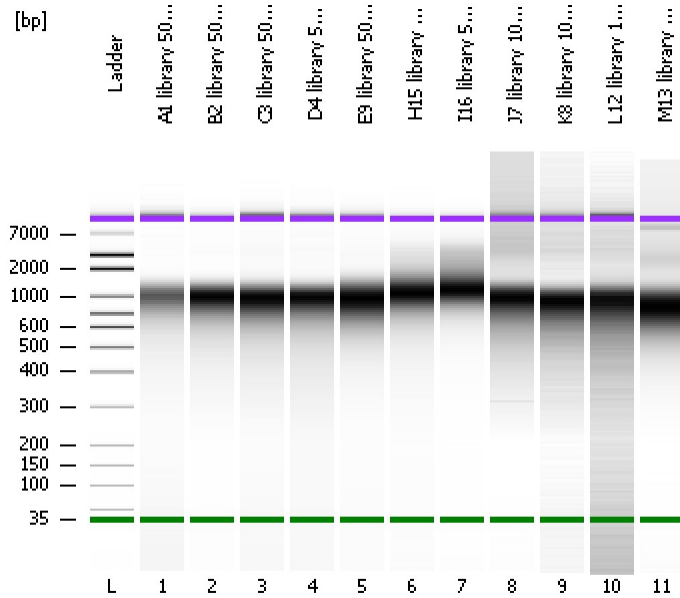


Assay Class: High Sensitivity DNA Assay
Data Path: C:\...ents and Settings\Bioanalyzer\2014-09-25\2014-09-25_006.xad

Created: 9/25/2014 12:34:44 PM
Modified: 9/25/2014 2:14:24 PM

Electrophoresis File Run Summary



Instrument Information:

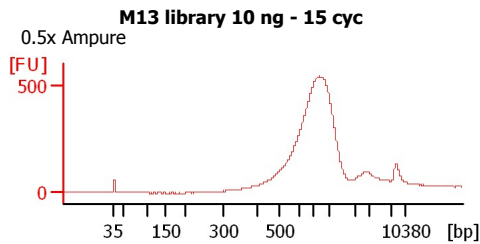
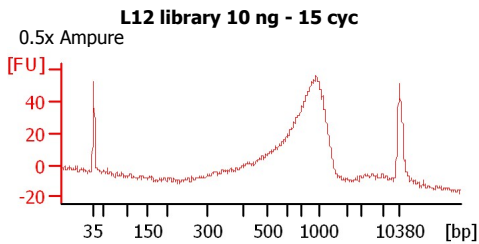
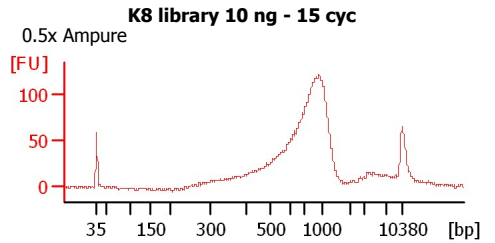
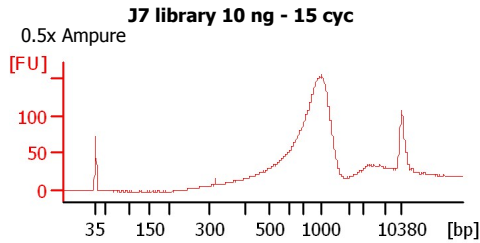
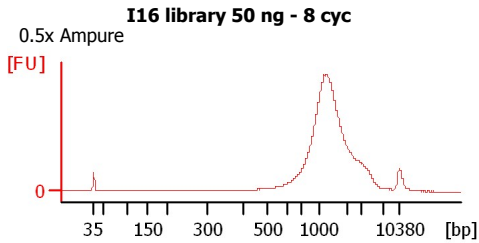
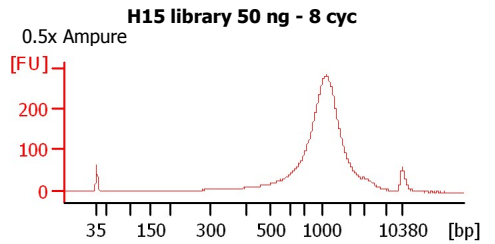
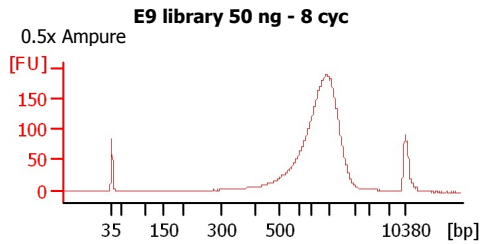
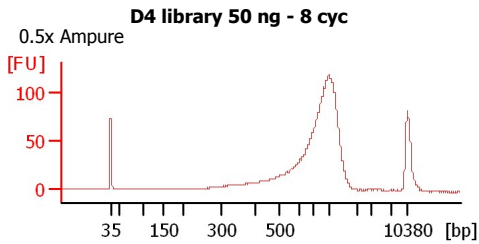
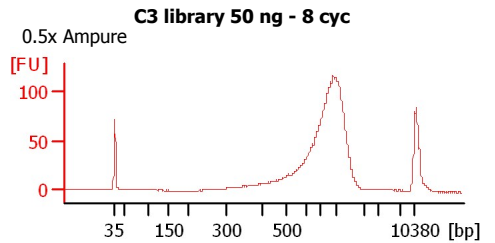
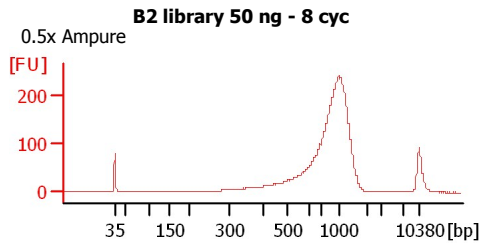
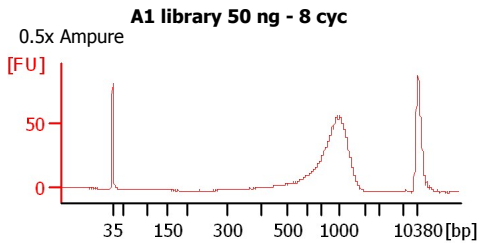
Instrument Name: DE13701086 Firmware: C.01.069
Serial#: DE13701086 Type: G2938B

Assay Information:

Assay Origin Path: C:\Program Files\Agilent\2100 bioanalyzer\2100 expert\assays\dsDNA\High Sensitivity DNA.xsy
Assay Class: High Sensitivity DNA Assay
Version: 1.03
Assay Comments: Copyright © 2003-2010 Agilent Technologies

Chip Information:

Chip Lot #:
Reagent Kit Lot #:
Chip Comments:



Assay Class: High Sensitivity DNA Assay
Data Path: C:\...ents and Settings\Bioanalyzer\2014-09-25\2014-09-25_006.xad

Created: 9/25/2014 12:34:44 PM
Modified: 9/25/2014 2:14:24 PM

Electrophoresis File Run Summary (Chip Summary)

Sample Name	Sample Comment	Rest. Digest	Status	Observation	Result Label	Result Color
A1 library 50 ng - 8 cyc	0.5x Ampure	<input type="checkbox"/>	✓			
B2 library 50 ng - 8 cyc	0.5x Ampure	<input type="checkbox"/>	✓			
C3 library 50 ng - 8 cyc	0.5x Ampure	<input type="checkbox"/>	✓			
D4 library 50 ng - 8 cyc	0.5x Ampure	<input type="checkbox"/>	✓			
E9 library 50 ng - 8 cyc	0.5x Ampure	<input type="checkbox"/>	✓			
H15 library 50 ng - 8 cyc	0.5x Ampure	<input type="checkbox"/>	✓			
I16 library 50 ng - 8 cyc	0.5x Ampure	<input type="checkbox"/>	✓			
J7 library 10 ng - 15 cyc	0.5x Ampure	<input type="checkbox"/>	✓			
K8 library 10 ng - 15 cyc	0.5x Ampure	<input type="checkbox"/>	✓			
L12 library 10 ng - 15 cyc	0.5x Ampure	<input type="checkbox"/>	✓			
M13 library 10 ng - 15 cyc	0.5x Ampure	<input type="checkbox"/>	✓			
Ladder		<input type="checkbox"/>	✓			

Chip Lot #

Reagent Kit Lot #

Chip Comments :

Assay Class: High Sensitivity DNA Assay
Data Path: C:\...ents and Settings\Bioanalyzer\2014-09-25\2014-09-25_006.xad

Created: 9/25/2014 12:34:44 PM
Modified: 9/25/2014 2:14:24 PM

Electrophoresis Assay Details

General Analysis Settings

Number of Available Sample and Ladder Wells (Max.) : 12
Minimum Visible Range [s] : 32
Maximum Visible Range [s] : 138
Start Analysis Time Range [s] : 33
End Analysis Time Range [s] : 137.5
Ladder Concentration [pg/μl] : 1950
Uses Standard Area for Ladder Fragments
Lower Marker Concentration [pg/μl] : 125
Upper Marker Concentration [pg/μl] : 75
Used Upper Marker for Quantitation
Standard Curve Fit is Point to Point
Show Data Aligned to Lower and Upper Marker

Integrator Settings

Integration Start Time [s] : 33.05
Integration End Time [s] : 137
Slope Threshold : 0.8
Height Threshold [FU] : 5
Area Threshold : 0.1
Width Threshold [s] : 0.6
Baseline Plateau [s] : 0.5

Filter Settings

Filter Width [s] : 0.5
Polynomial Order : 4

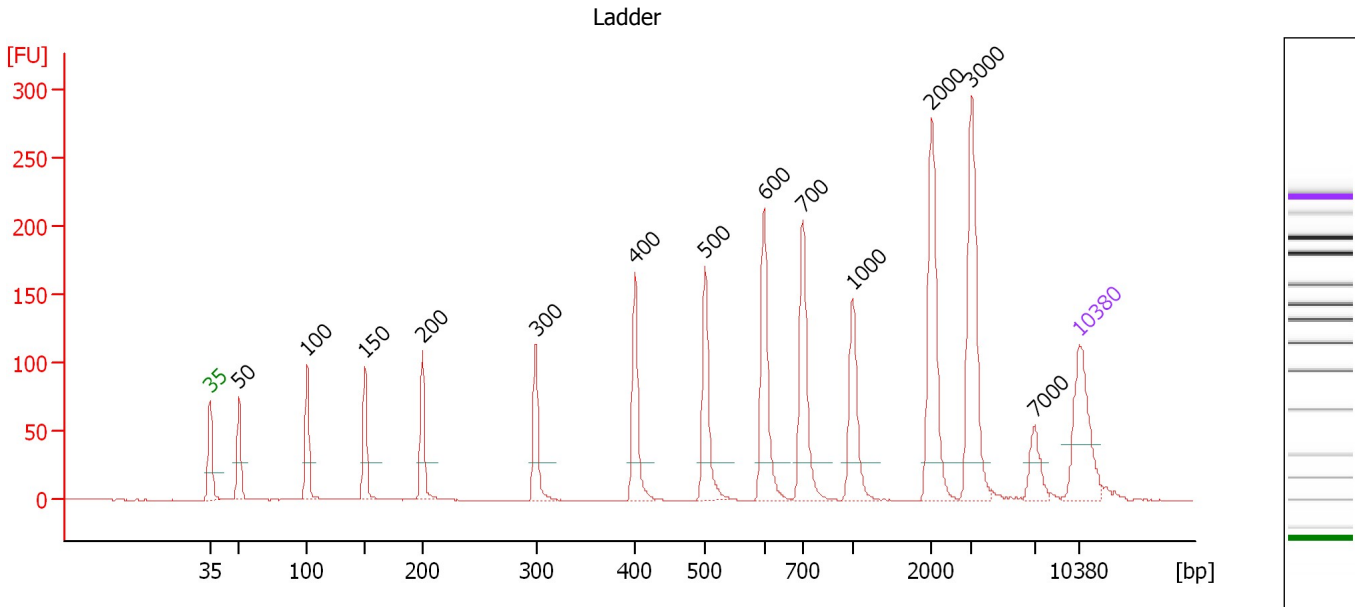
Ladder

Ladder Peak	Size	Area
1	35	160
2	50	210
3	100	208
4	150	221
5	200	242
6	300	270
7	400	305
8	500	306
9	600	336
10	700	321
11	1000	366
12	2000	413
13	3000	411
14	7000	400
15	10380	214

Assay Class: High Sensitivity DNA Assay
 Data Path: C:\...ents and Settings\Bioanalyzer\2014-09-25\2014-09-25_006.xad

Created: 9/25/2014 12:34:44 PM
 Modified: 9/25/2014 2:14:24 PM

Electropherogram Summary



Overall Results for Ladder

Noise: 0.1

Peak table for Ladder

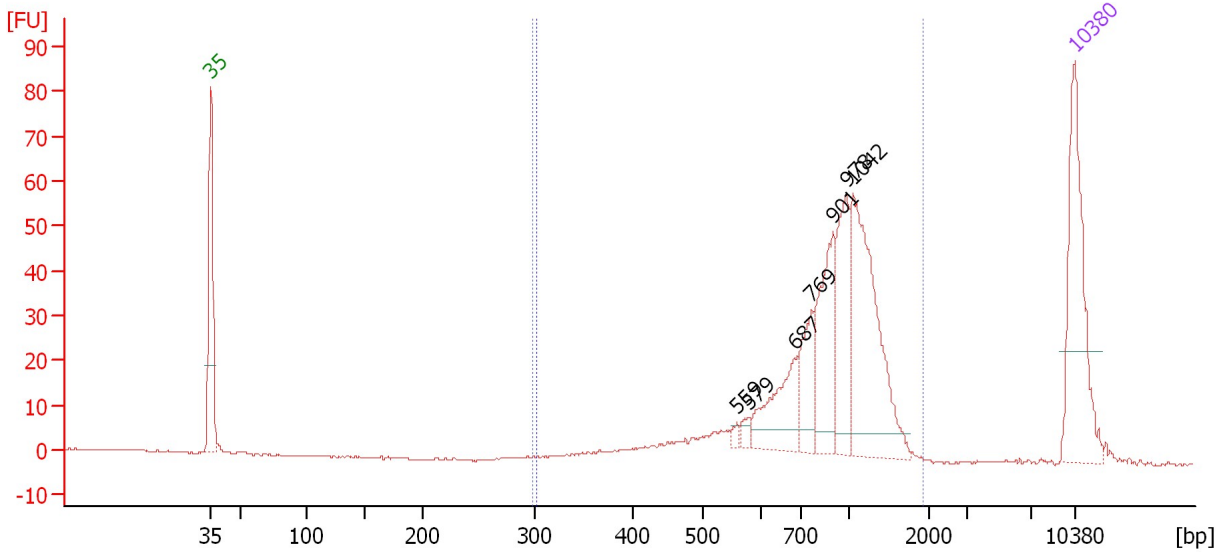
Peak	Size [bp]	Conc. [pg/μl]	Molarity [pmol/l]	Observations
1	35	125.00	5,411.3	Lower Marker
2	50	150.00	4,545.5	Ladder Peak
3	100	150.00	2,272.7	Ladder Peak
4	150	150.00	1,515.2	Ladder Peak
5	200	150.00	1,136.4	Ladder Peak
6	300	150.00	757.6	Ladder Peak
7	400	150.00	568.2	Ladder Peak
8	500	150.00	454.5	Ladder Peak
9	600	150.00	378.8	Ladder Peak
10	700	150.00	324.7	Ladder Peak
11	1,000	150.00	227.3	Ladder Peak
12	2,000	150.00	113.6	Ladder Peak
13	3,000	150.00	75.8	Ladder Peak
14	7,000	150.00	32.5	Ladder Peak
15	10,380	75.00	10.9	Upper Marker

Assay Class: High Sensitivity DNA Assay
 Data Path: C:\...ents and Settings\Bioanalyzer\2014-09-25\2014-09-25_006.xad

Created: 9/25/2014 12:34:44 PM
 Modified: 9/25/2014 2:14:24 PM

Electropherogram Summary Continued ...

A1 library 50 ng - 8 cyc [0.5x Ampure]



Overall Results for sample 1 : A1 library 50 ng - 8 cyc

Number of peaks found: 7 Corr. Area 1: 485.6
 Noise: 0.2 Corr. Area 2: 0.0

Peak table for sample 1 : A1 library 50 ng - 8 cyc

Peak	Size [bp]	Conc. [pg/μl]	Molarity [pmol/l]	Observations
1	35	125.00	5,411.3	Lower Marker
2	559	3.11	8.4	
3	579	5.97	15.6	
4	687	50.21	110.7	
5	769	34.21	67.4	
6	901	65.09	109.5	
7	978	54.27	84.1	
8	1,042	119.80	174.2	
9	10,380	75.00	10.9	Upper Marker

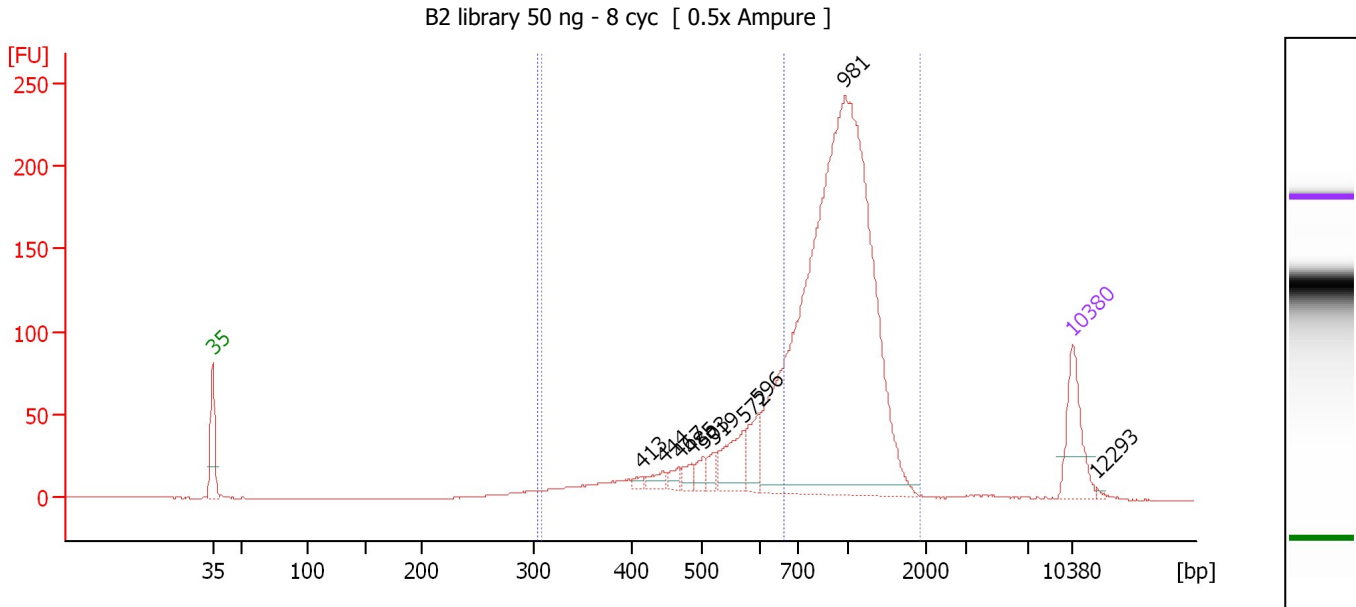
Region table for sample 1 : A1 library 50 ng - 8 cyc

From [bp]	Average Size [bp]	To [bp]	Corr. Area	% of Total	Size distribution in CV [%]	Conc. [pg/μl]	Molarity [pmol/l]	Color
299	928	1,934	485.6	98	31.4	394.85	740.4	Blue
303	0	303	0.0	0	0.0	0.00	0.0	Blue

Assay Class: High Sensitivity DNA Assay
 Data Path: C:\...ents and Settings\Bioanalyzer\2014-09-25\2014-09-25_006.xad

Created: 9/25/2014 12:34:44 PM
 Modified: 9/25/2014 2:14:24 PM

Electropherogram Summary Continued ...



Overall Results for sample 2 : B2 library 50 ng - 8 cyc

Number of peaks found: 10 Corr. Area 1: 2,150.3
 Noise: 0.1 Corr. Area 2: 567.3

Peak table for sample 2 : B2 library 50 ng - 8 cyc

Peak	Size [bp]	Conc. [pg/μl]	Molarity [pmol/l]	Observations
1	35	125.00	5,411.3	Lower Marker
2	413	9.04	33.2	
3	444	18.34	62.6	
4	467	16.19	52.5	
5	485	16.82	52.6	
6	503	20.27	61.1	
7	519	18.37	53.6	
8	572	71.55	189.7	
9	596	50.01	127.1	
10	981	1,319.82	2,038.9	
11	10,380	75.00	10.9	Upper Marker
12	12,293	0.00	0.0	

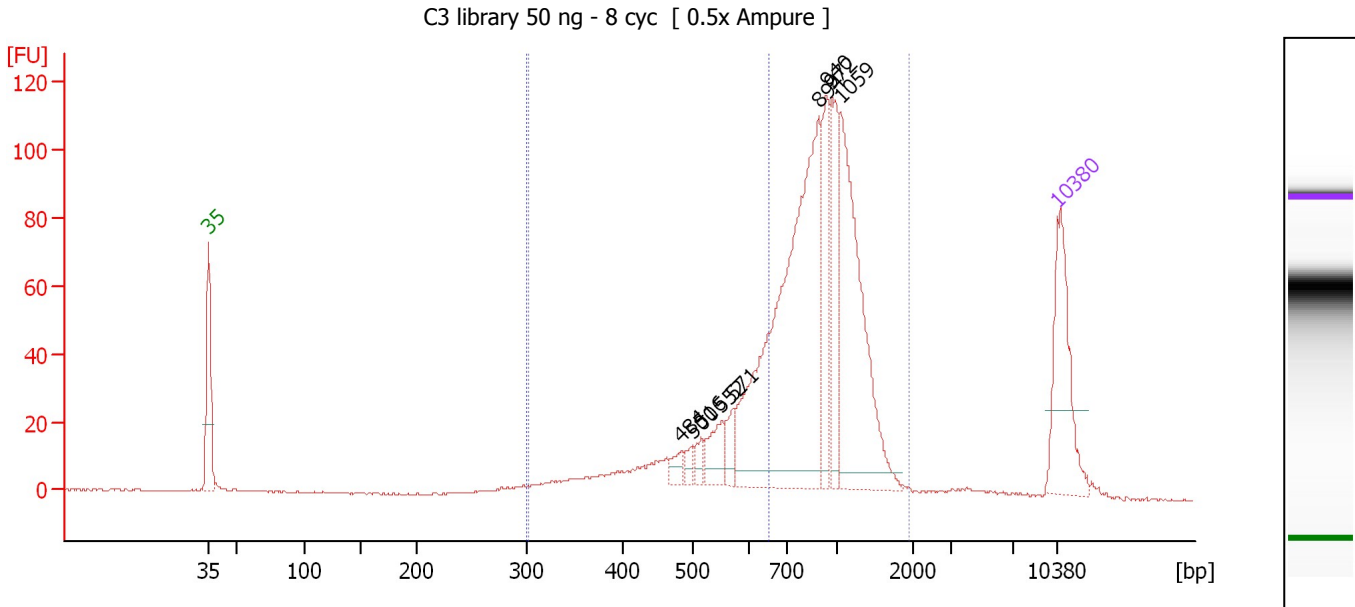
Region table for sample 2 : B2 library 50 ng - 8 cyc

From [bp]	Average Size [bp]	To [bp]	Corr. Area	% of Total	Size distribution in CV [%]	Conc. [pg/μl]	Molarity [pmol/l]	Color
304	530	664	567.3	26	18.1	514.87	1,559.7	Blue
306	894	1,914	2,150.3	97	33.1	1,788.51	3,575.5	Dark Blue

Assay Class: High Sensitivity DNA Assay
 Data Path: C:\...ents and Settings\Bioanalyzer\2014-09-25\2014-09-25_006.xad

Created: 9/25/2014 12:34:44 PM
 Modified: 9/25/2014 2:14:24 PM

Electropherogram Summary Continued ...



Overall Results for sample 3 : C3 library 50 ng - 8 cyc

Number of peaks found: 9 Corr. Area 1: 1,156.0
 Noise: 0.2 Corr. Area 2: 318.6

Peak table for sample 3 : C3 library 50 ng - 8 cyc

Peak	Size [bp]	Conc. [pg/μl]	Molarity [pmol/l]	Observations
1	35	125.00	5,411.3	Lower Marker
2	484	11.47	35.9	
3	500	8.61	26.1	
4	516	11.30	33.2	
5	552	28.13	77.2	
6	571	19.06	50.6	
7	894	374.48	634.7	
8	940	60.62	97.7	
9	972	59.79	93.2	
10	1,059	196.60	281.2	
11	10,380	75.00	10.9	Upper Marker

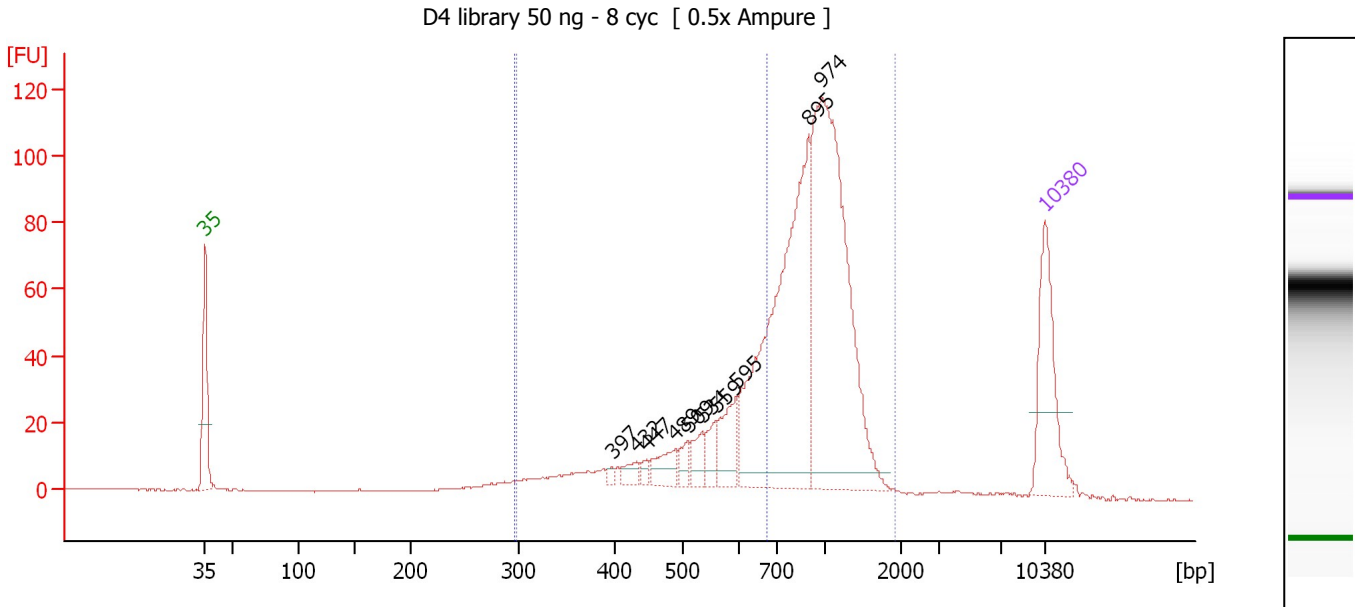
Region table for sample 3 : C3 library 50 ng - 8 cyc

From [bp]	Average Size [bp]	To [bp]	Corr. Area	% of Total	Size distribution in CV [%]	Conc. [pg/μl]	Molarity [pmol/l]	Color
301	523	650	318.6	27	17.6	286.89	878.6	Blue
302	863	1,949	1,156.0	96	33.9	960.43	1,986.5	Dark Blue

Assay Class: High Sensitivity DNA Assay
 Data Path: C:\...ents and Settings\Bioanalyzer\2014-09-25\2014-09-25_006.xad

Created: 9/25/2014 12:34:44 PM
 Modified: 9/25/2014 2:14:24 PM

Electropherogram Summary Continued ...



Overall Results for sample 4 : D4 library 50 ng - 8 cyc

Number of peaks found: 10 Corr. Area 1: 1,131.4
 Noise: 0.2 Corr. Area 2: 370.9

Peak table for sample 4 : D4 library 50 ng - 8 cyc

Peak	Size [bp]	Conc. [pg/µl]	Molarity [pmol/l]	Observations
1	35	125.00	5,411.3	Lower Marker
2	397	4.55	17.3	
3	432	12.46	43.7	
4	447	6.91	23.4	
5	489	25.94	80.4	
6	509	13.47	40.1	
7	534	20.94	59.4	
8	559	19.30	52.3	
9	595	40.85	104.1	
10	895	331.12	560.8	
11	974	357.03	555.4	
12	10,380	75.00	10.9	Upper Marker

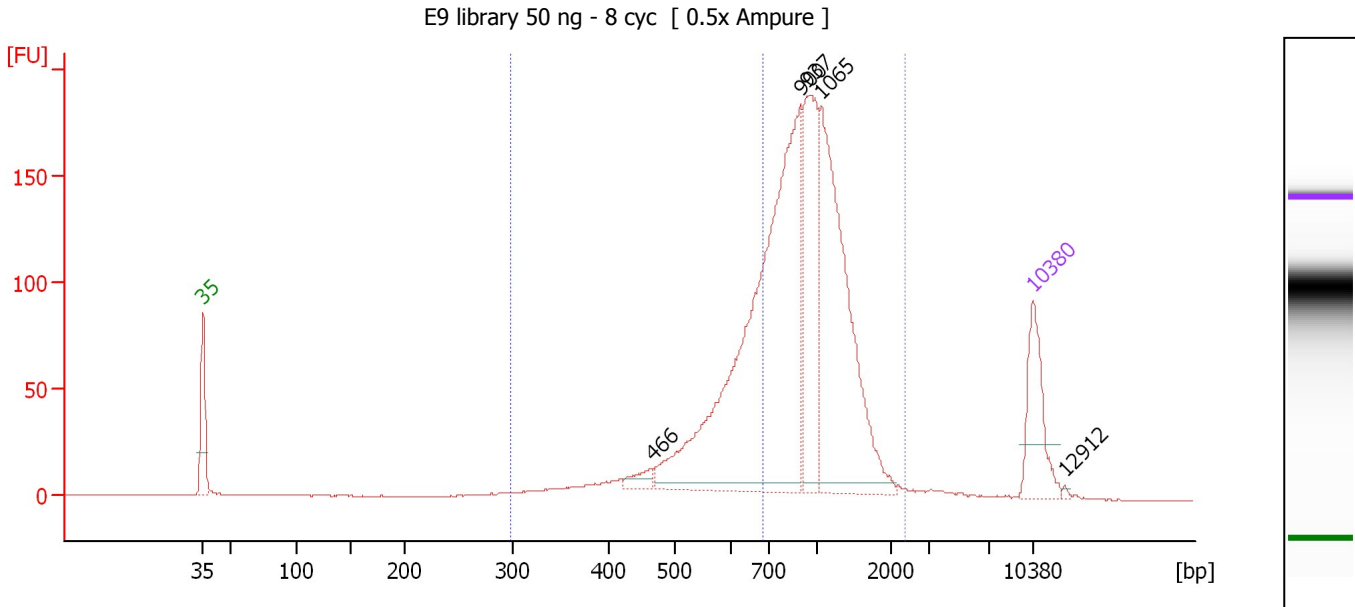
Region table for sample 4 : D4 library 50 ng - 8 cyc

From [bp]	Average Size [bp]	To [bp]	Corr. Area	% of Total	Size distribution in CV [%]	Conc. [pg/µl]	Molarity [pmol/l]	Color
296	529	675	370.9	31	19.6	346.51	1,064.2	Blue
298	856	1,917	1,131.4	96	34.2	975.25	2,065.7	Dark Blue

Assay Class: High Sensitivity DNA Assay
 Data Path: C:\...ents and Settings\Bioanalyzer\2014-09-25\2014-09-25_006.xad

Created: 9/25/2014 12:34:44 PM
 Modified: 9/25/2014 2:14:24 PM

Electropherogram Summary Continued ...



Overall Results for sample 5 : E9 library 50 ng - 8 cyc

Number of peaks found: 5 Corr. Area 1: 1,986.4
 Noise: 0.2 Corr. Area 2: 595.0

Peak table for sample 5 : E9 library 50 ng - 8 cyc

Peak	Size [bp]	Conc. [pg/μl]	Molarity [pmol/l]	Observations
1	35	125.00	5,411.3	Lower Marker
2	466	18.62	60.5	
3	900	707.92	1,191.5	
4	937	198.17	320.4	
5	1,065	378.08	537.8	
6	10,380	75.00	10.9	Upper Marker
7	12,912	0.00	0.0	

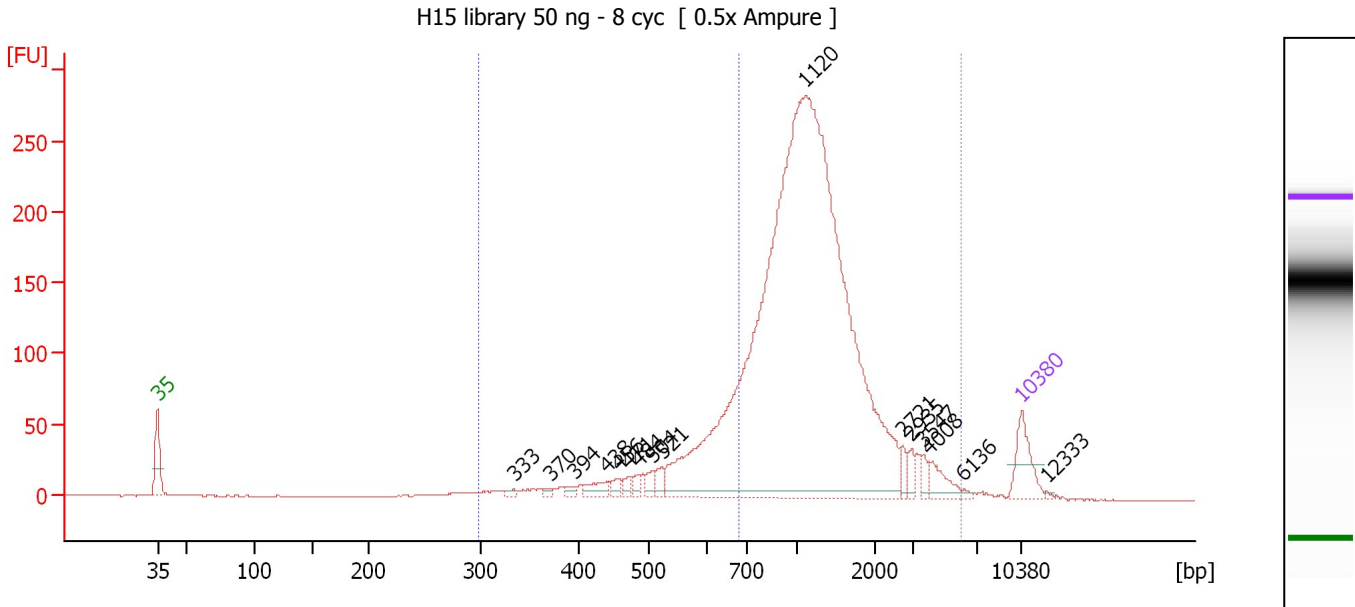
Region table for sample 5 : E9 library 50 ng - 8 cyc

From [bp]	Average Size [bp]	To [bp]	Corr. Area	% of Total	Size distribution in CV [%]	Conc. [pg/μl]	Molarity [pmol/l]	Color
297	918	2,355	1,986.3	98	36.0	1,489.22	2,891.5	Blue
297	570	687	595.0	29	15.9	481.84	1,342.0	Dark Blue

Assay Class: High Sensitivity DNA Assay
 Data Path: C:\...ents and Settings\Bioanalyzer\2014-09-25\2014-09-25_006.xad

Created: 9/25/2014 12:34:44 PM
 Modified: 9/25/2014 2:14:24 PM

Electropherogram Summary Continued ...



Overall Results for sample 6 : H15 library 50 ng - 8 cyc

Number of peaks found: 16 Corr. Area 1: 2,832.4
 Noise: 0.2 Corr. Area 2: 493.6

Peak table for sample 6 : H15 library 50 ng - 8 cyc

Peak	Size [bp]	Conc. [pg/μl]	Molarity [pmol/l]	Observations
1	35	125.00	5,411.3	Lower Marker
2	333	9.85	44.8	
3	370	8.86	36.3	
4	394	13.01	50.0	
5	438	37.59	130.1	
6	456	17.93	59.6	
7	471	16.45	52.9	
8	484	18.41	57.7	
9	504	22.09	66.4	
10	521	27.86	80.9	
11	1,120	2,859.63	3,868.1	
12	2,721	21.46	12.0	
13	2,935	23.14	11.9	
14	3,547	19.83	8.5	
15	4,008	43.12	16.3	
16	6,136	4.91	1.2	
17	10,380	75.00	10.9	Upper Marker
18	12,333	0.00	0.0	

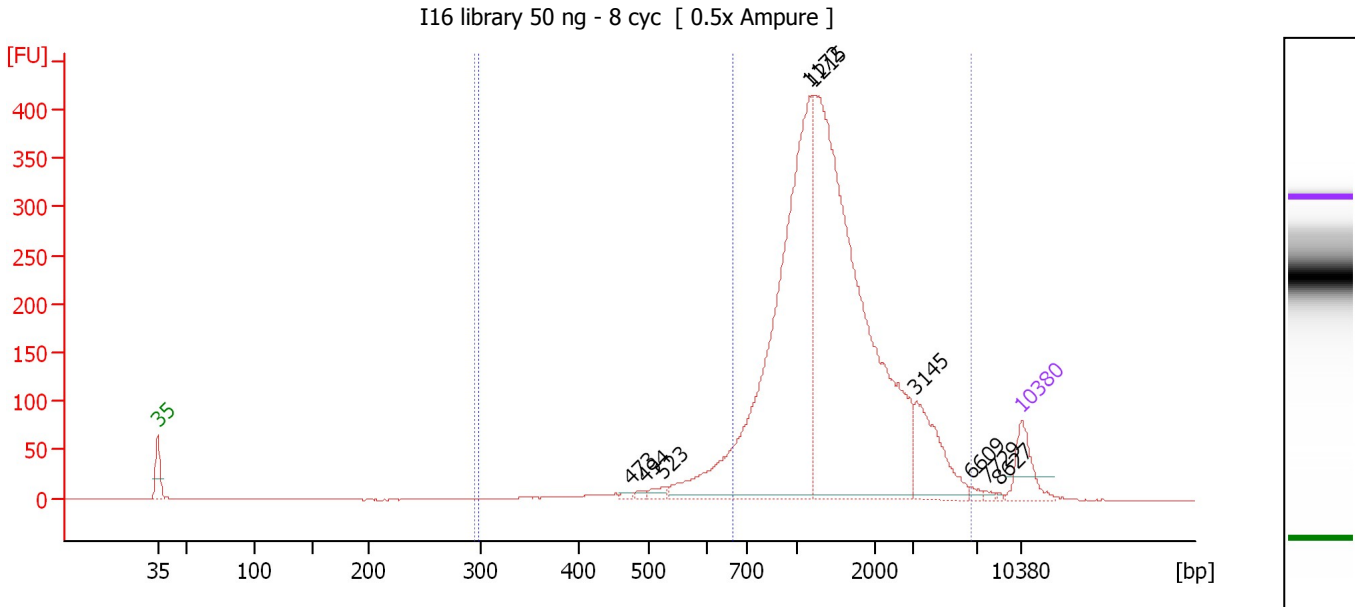
Region table for sample 6 : H15 library 50 ng - 8 cyc

From [bp]	Average Size [bp]	To [bp]	Corr. Area	% of Total	Size distribution in CV [%]	Conc. [pg/μl]	Molarity [pmol/l]	Color
297	1,241	5,981	2,832.4	97	58.8	3,354.89	5,499.2	Blue
297	546	680	493.6	17	18.4	664.51	1,963.8	Blue

Assay Class: High Sensitivity DNA Assay
 Data Path: C:\...ents and Settings\Bioanalyzer\2014-09-25\2014-09-25_006.xad

Created: 9/25/2014 12:34:44 PM
 Modified: 9/25/2014 2:14:24 PM

Electropherogram Summary Continued ...



Overall Results for sample 7 : I16 library 50 ng - 8 cyc

Number of peaks found: 9 Corr. Area 1: 3,910.1
 Noise: 0.2 Corr. Area 2: 258.8

Peak table for sample 7 : I16 library 50 ng - 8 cyc

Peak	Size [bp]	Conc. [pg/μl]	Molarity [pmol/l]	Observations
1	35	125.00	5,411.3	Lower Marker
2	473	7.40	23.7	
3	494	8.61	26.4	
4	523	17.97	52.1	
5	1,172	1,189.03	1,536.9	
6	1,215	1,499.42	1,869.4	
7	3,145	169.21	81.5	
8	6,609	8.51	2.0	
9	7,729	5.43	1.1	
10	8,627	2.29	0.4	
11	10,380	75.00	10.9	Upper Marker

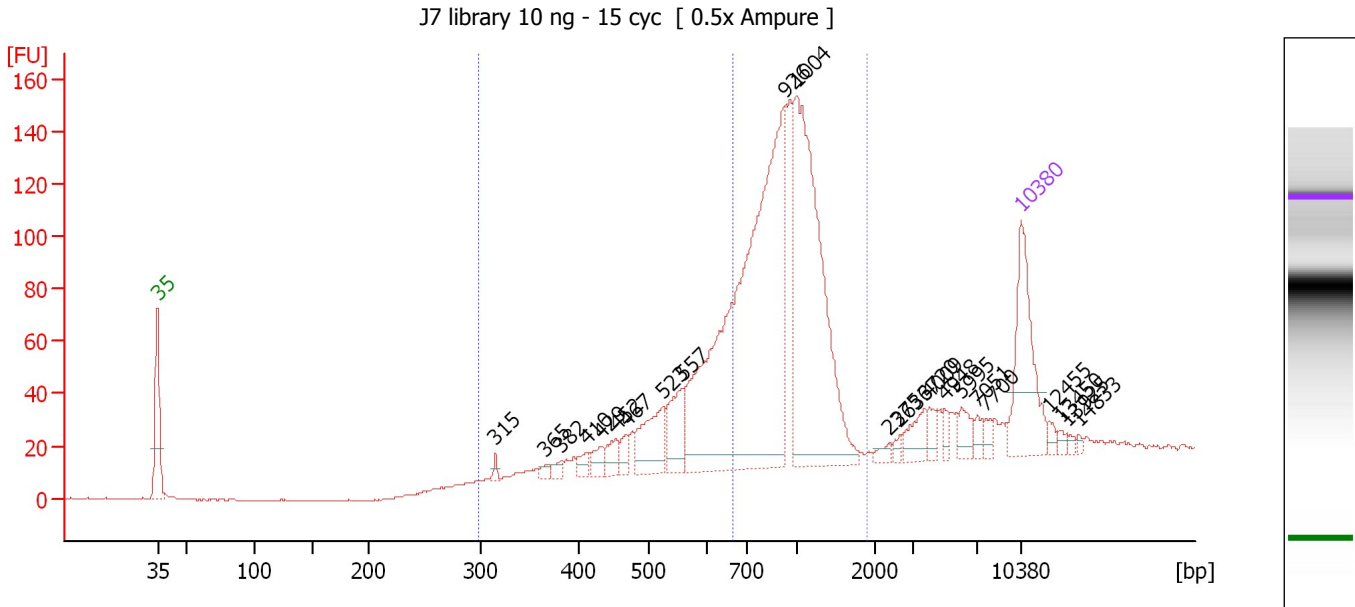
Region table for sample 7 : I16 library 50 ng - 8 cyc

From [bp]	Average Size [bp]	To [bp]	Corr. Area	% of Total	Size distribution in CV [%]	Conc. [pg/μl]	Molarity [pmol/l]	Color
295	1,558	6,652	3,910.1	99	59.9	2,952.28	3,817.9	Blue
297	558	666	258.8	7	15.2	228.47	647.1	Dark Blue

Assay Class: High Sensitivity DNA Assay
 Data Path: C:\...ents and Settings\Bioanalyzer\2014-09-25\2014-09-25_006.xad

Created: 9/25/2014 12:34:44 PM
 Modified: 9/25/2014 2:14:24 PM

Electropherogram Summary Continued ...



Overall Results for sample 8 : J7 library 10 ng - 15 cyc

Number of peaks found: 23 Corr. Area 1: 1,359.7
 Noise: 0.3 Corr. Area 2: 410.4

Peak table for sample 8 : J7 library 10 ng - 15 cyc



Peak	Size [bp]	Conc. [pg/μl]	Molarity [pmol/l]	Observations
1	35	125.00	5,411.3	Lower Marker
2	315	4.70	22.6	
3	365	5.60	23.2	
4	382	6.71	26.7	
5	410	9.68	35.8	
6	429	13.18	46.5	
7	452	16.31	54.6	
8	467	10.78	35.0	
9	523	52.50	152.1	
10	557	42.84	116.5	
11	926	475.39	777.5	
12	1,004	281.16	424.3	
13	2,375	5.54	3.5	
14	2,636	4.31	2.5	
15	3,720	18.61	7.6	
16	4,009	8.82	3.3	
17	4,948	6.85	2.1	
18	5,995	14.00	3.5	
19	7,051	6.39	1.4	
20	7,700	6.43	1.3	
21	10,380	75.00	10.9	Upper Marker
22	12,455	0.00	0.0	
23	13,450	0.00	0.0	
24	13,925	0.00	0.0	
25	14,833	0.00	0.0	

Assay Class: High Sensitivity DNA Assay
Data Path: C:\...ents and Settings\Bioanalyzer\2014-09-25\2014-09-25_006.xad

Created: 9/25/2014 12:34:44 PM
Modified: 9/25/2014 2:14:24 PM

Electropherogram Summary Continued ...

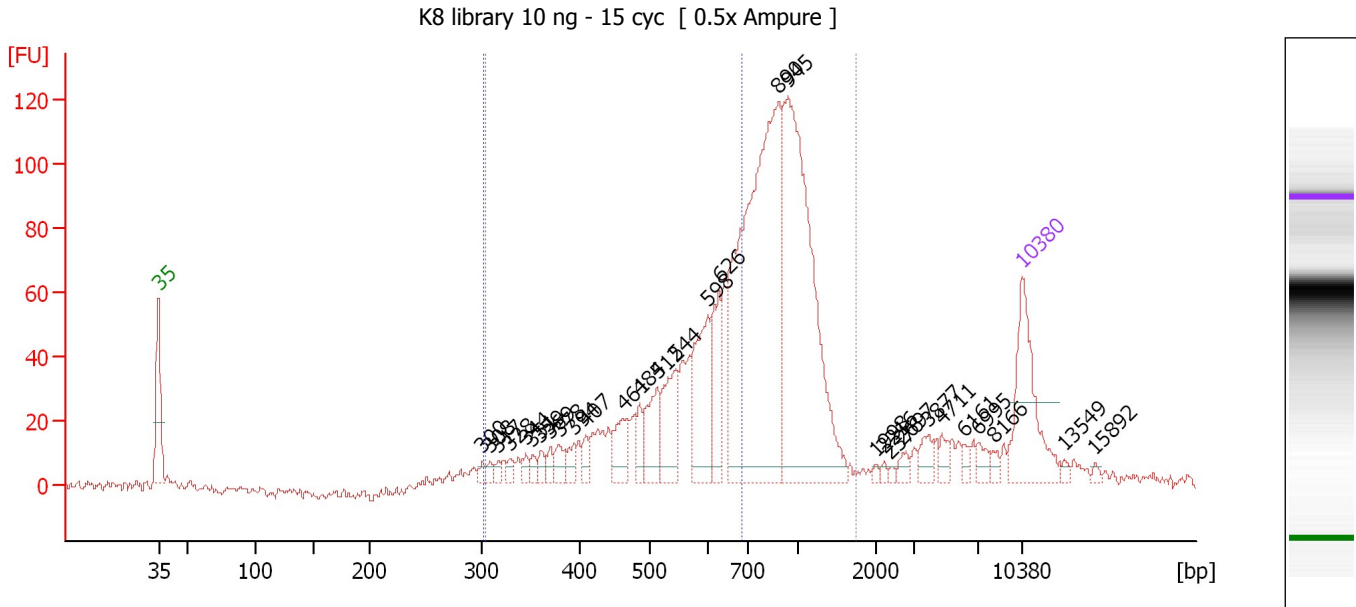
... Region table for sample 8 : J7 library 10 ng - 15 cyc

From [bp]	Average Size [bp]	To [bp]	Corr. Area	% of Total	Size distribution in CV [%]	Conc. [pg/μl]	Molarity [pmol/l]	Color
297	866	1,908	1,359.7	88	32.9	1,028.07	2,079.4	
297	549	667	410.4	27	15.1	333.43	957.0	

Assay Class: High Sensitivity DNA Assay
 Data Path: C:\...ents and Settings\Bioanalyzer\2014-09-25\2014-09-25_006.xad

Created: 9/25/2014 12:34:44 PM
 Modified: 9/25/2014 2:14:24 PM

Electropherogram Summary Continued ...



Overall Results for sample 9 : K8 library 10 ng - 15 cyc

Number of peaks found: 30 Corr. Area 1: 1,321.2
 Noise: 1.5 Corr. Area 2: 601.1

Peak table for sample 9 : K8 library 10 ng - 15 cyc

Peak	Size [bp]	Conc. [pg/μl]	Molarity [pmol/l]	Observations
1	35	125.00	5,411.3	Lower Marker
2	300	6.30	31.8	
3	308	6.41	31.5	
4	317	6.61	31.6	
5	328	7.54	34.8	
6	344	7.72	34.0	
7	351	8.20	35.4	
8	359	10.12	42.6	
9	369	8.74	35.9	
10	378	14.73	59.0	
11	394	11.63	44.8	
12	407	11.54	42.9	
13	461	33.37	109.8	
14	484	18.15	56.8	
15	512	46.38	137.4	
16	544	54.64	152.2	
17	598	84.71	214.7	
18	626	51.95	125.7	
19	890	419.93	715.0	
20	945	327.79	525.6	
21	1,998	2.77	2.1	
22	2,216	2.57	1.8	
23	2,376	2.28	1.5	
24	2,697	6.67	3.7	
25	3,877	12.65	4.9	
26	4,711	8.55	2.7	

Assay Class: High Sensitivity DNA Assay
 Data Path: C:\...ents and Settings\Bioanalyzer\2014-09-25\2014-09-25_006.xad



Created: 9/25/2014 12:34:44 PM
 Modified: 9/25/2014 2:14:24 PM

Electropherogram Summary Continued ...

... Peak table for sample 9 : K8 library 10 ng - 15 cyc

Peak	Size [bp]	Conc. [pg/μl]	Molarity [pmol/l]	Observations
27	6,161	5.30	1.3	
28	6,995	9.16	2.0	
29	8,166	5.35	1.0	
30	10,380	75.00	10.9	Upper Marker
31	13,549	0.00	0.0	
32	15,892	0.00	0.0	

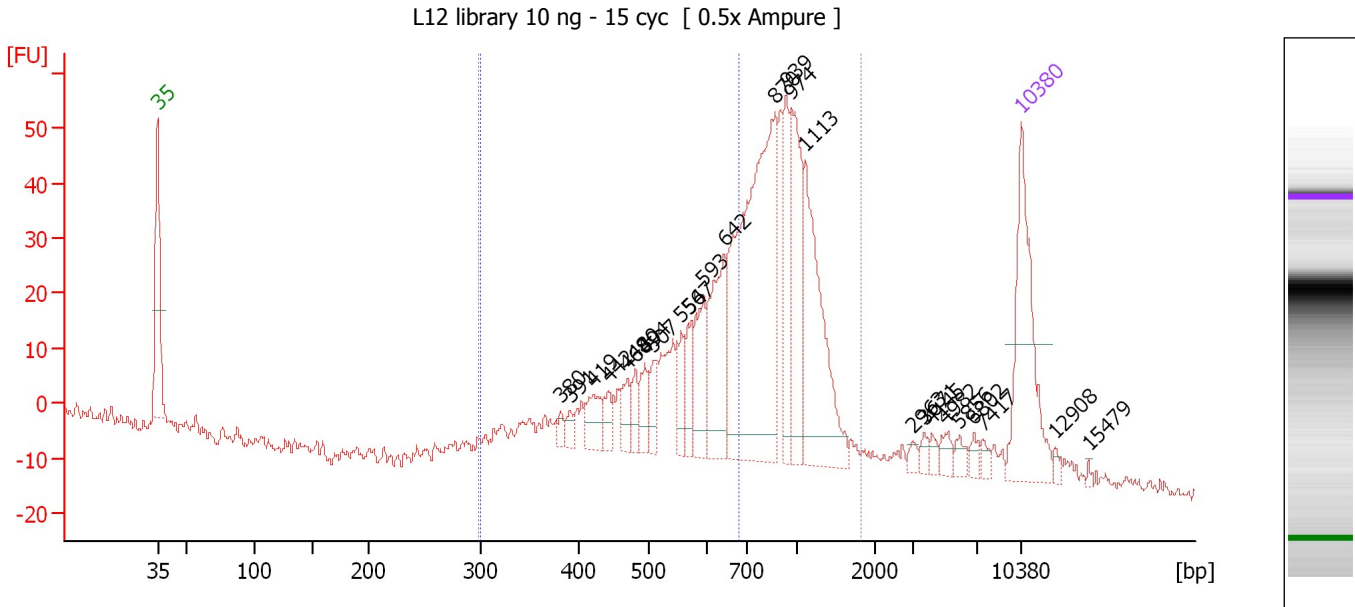
Region table for sample 9 : K8 library 10 ng - 15 cyc

From [bp]	Average Size [bp]	To [bp]	Corr. Area	% of Total	Size distribution in CV [%]	Conc. [pg/μl]	Molarity [pmol/l]	Color
301	541	686	601.1	41	18.7	619.26	1,845.9	
303	772	1,759	1,321.2	91	33.3	1,286.56	2,950.7	

Assay Class: High Sensitivity DNA Assay
 Data Path: C:\...ents and Settings\Bioanalyzer\2014-09-25\2014-09-25_006.xad

Created: 9/25/2014 12:34:44 PM
 Modified: 9/25/2014 2:14:24 PM

Electropherogram Summary Continued ...



Overall Results for sample 10 : L12 library 10 ng - 15 cyc

Number of peaks found: 25 Corr. Area 1: 715.6
 Noise: 1.5 Corr. Area 2: 299.0

Peak table for sample 10 : L12 library 10 ng - 15 cyc

Peak	Size [bp]	Conc. [pg/μl]	Molarity [pmol/l]	Observations
1	35	125.00	5,411.3	Lower Marker
2	380	5.45	21.7	
3	391	6.99	27.1	
4	419	20.65	74.7	
5	442	12.29	42.1	
6	468	14.96	48.4	
7	480	12.63	39.9	
8	494	17.62	54.1	
9	507	16.98	50.7	
10	554	17.93	49.0	
11	567	19.20	51.3	
12	593	38.72	99.0	
13	642	69.67	164.3	
14	870	243.93	424.8	
15	939	44.93	72.5	
16	974	69.37	107.9	
17	1,113	99.46	135.4	
18	2,963	4.14	2.1	
19	3,671	4.33	1.8	
20	4,145	4.42	1.6	
21	4,982	7.12	2.2	
22	5,856	5.95	1.5	
23	6,802	4.35	1.0	
24	7,417	4.20	0.9	
25	10,380	75.00	10.9	Upper Marker
26	12,908	0.00	0.0	



Assay Class: High Sensitivity DNA Assay
Data Path: C:\...ents and Settings\Bioanalyzer\2014-09-25\2014-09-25_006.xad

Created: 9/25/2014 12:34:44 PM
Modified: 9/25/2014 2:14:24 PM

Electropherogram Summary Continued ...**... Peak table for sample 10 : L12 library 10 ng - 15 cyc**

Peak	Size [bp]	Conc. [pg/ μ l]	Molarity [pmol/l]	Observations
27	15,479	0.00	0.0	

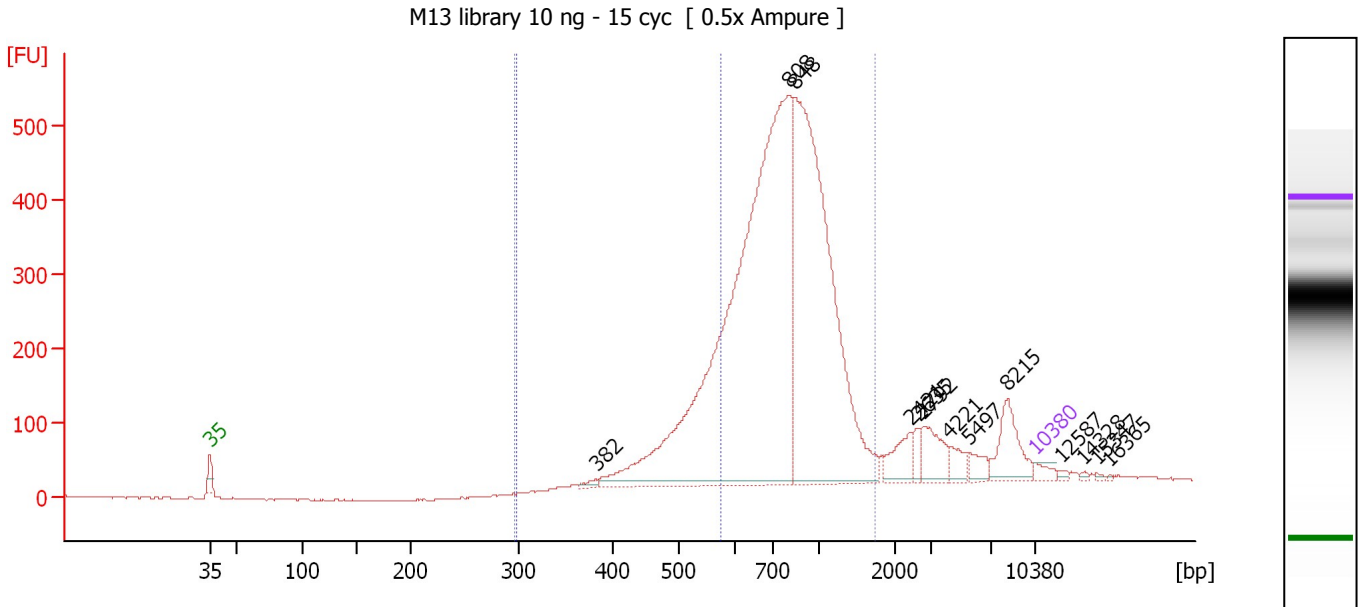
Region table for sample 10 : L12 library 10 ng - 15 cyc

From [bp]	Average Size [bp]	To [bp]	Corr. Area	% of Total	Size distribution in CV [%]	Conc. [pg/ μ l]	Molarity [pmol/l]	Color
298	801	1,828	715.6	93	33.7	806.27	1,765.4	
300	550	679	299.0	39	16.0	356.76	1,025.2	

Assay Class: High Sensitivity DNA Assay
 Data Path: C:\...ents and Settings\Bioanalyzer\2014-09-25\2014-09-25_006.xad

Created: 9/25/2014 12:34:44 PM
 Modified: 9/25/2014 2:14:24 PM

Electropherogram Summary Continued ...



Overall Results for sample 11 : M13 library 10 ng - 15 cyc

Number of peaks found: 13 Corr. Area 1: 5,700.0
 Noise: 1.0 Corr. Area 2: 927.9

Peak table for sample 11 : M13 library 10 ng - 15 cyc

Peak	Size [bp]	Conc. [pg/µl]	Molarity [pmol/l]	Observations
1	35	125.00	5,411.3	Lower Marker
2	382	55.66	220.7	
3	808	9,411.57	17,657.6	
4	848	5,703.54	10,190.9	
5	2,421	284.88	178.3	
6	2,635	100.26	57.6	
7	2,792	333.50	181.0	
8	4,221	150.92	54.2	
9	5,497	136.00	37.5	
10	8,215	444.75	82.0	
11	10,380	75.00	10.9	Upper Marker
12	12,587	0.00	0.0	
13	14,328	0.00	0.0	
14	15,347	0.00	0.0	
15	16,365	0.00	0.0	

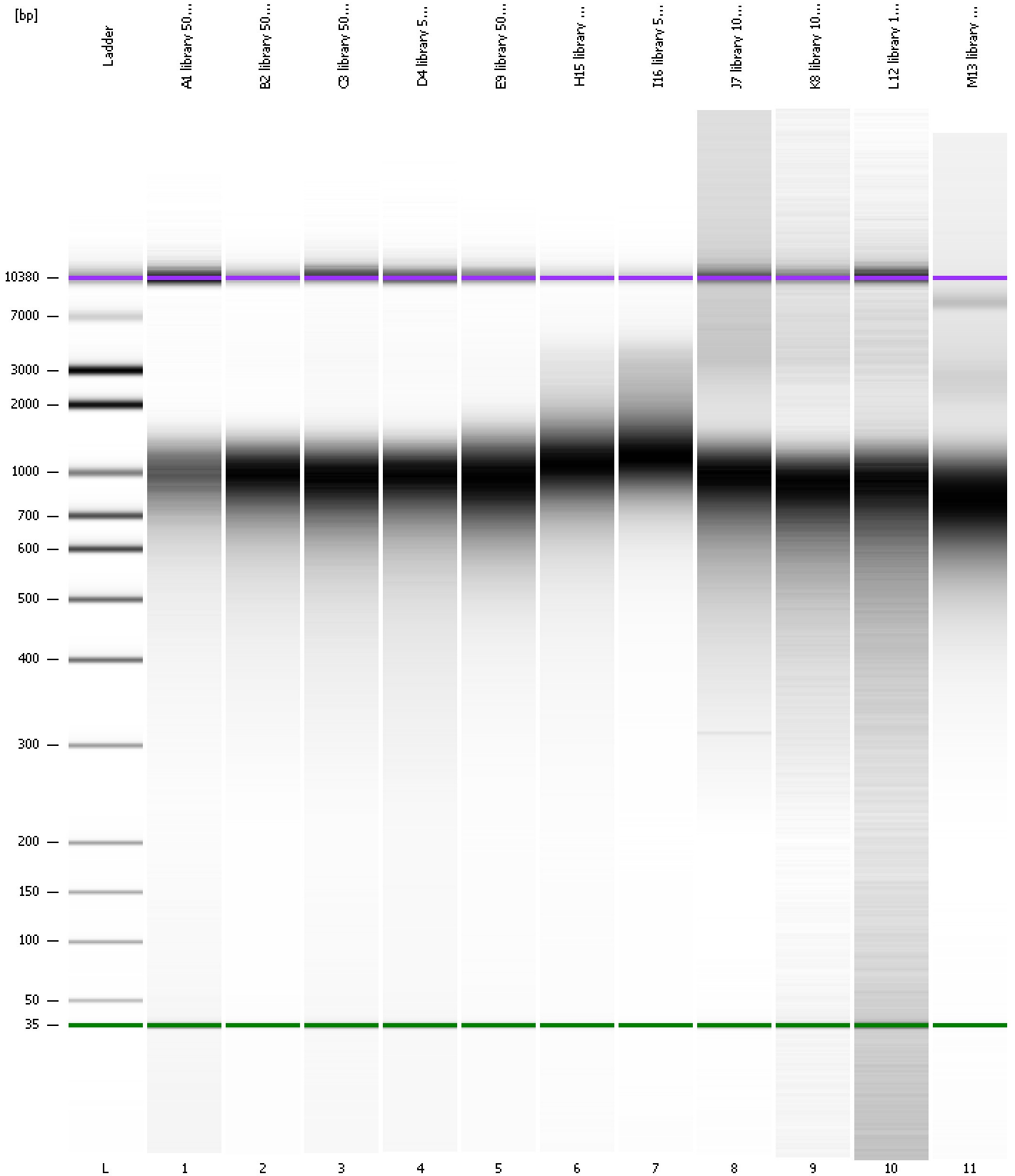
Region table for sample 11 : M13 library 10 ng - 15 cyc

From [bp]	Average Size [bp]	To [bp]	Corr. Area	% of Total	Size distribution in CV [%]	Conc. [pg/µl]	Molarity [pmol/l]	Color
296	797	1,743	5,700.0	89	30.6	15,551.20	32,834.3	Blue
298	507	573	927.9	14	10.3	2,733.59	8,302.1	Blue

Assay Class: High Sensitivity DNA Assay
Data Path: C:\...ents and Settings\Bioanalyzer\2014-09-25\2014-09-25_006.xad

Created: 9/25/2014 12:34:44 PM
Modified: 9/25/2014 2:14:24 PM

Gel Image

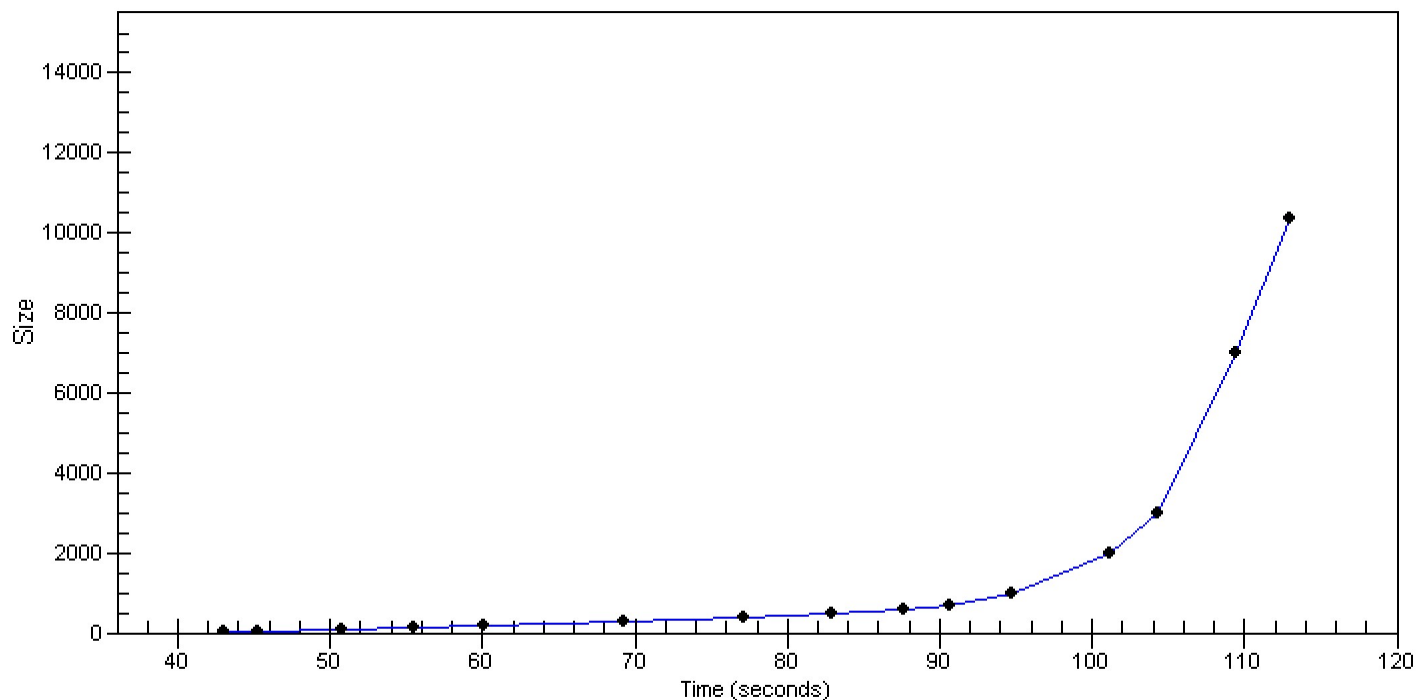


Assay Class: High Sensitivity DNA Assay
Data Path: C:\...ents and Settings\Bioanalyzer\2014-09-25\2014-09-25_006.xad

Created: 9/25/2014 12:34:44 PM
Modified: 9/25/2014 2:14:24 PM

Curves

Standard Curve



Assay Class: High Sensitivity DNA Assay
 Data Path: C:\...ents and Settings\Bioanalyzer\2014-09-25\2014-09-25_006.xad

Created: 9/25/2014 12:34:44 PM
 Modified: 9/25/2014 2:14:24 PM

Run Logbook

Description	Number	Source	Category	Sub Category	Time	Time Zone	User	Host
Run ended on port 1 (Number of wells acquired: 12)		Instrument	Run		9/25/2014 1:15:13 PM	(GMT --07:00) Pacific Standard Time	UC Davis	D8XSMGH1
Run started on port 1 (File: C:\Documents and Settings\Bioanalyzer\2014-09-25\2014-09-25_006.xad)		Instrument	Run		9/25/2014 12:34:50 PM	(GMT --07:00) Pacific Standard Time	UC Davis	D8XSMGH1
Product Number : G2938B		Instrument	Run		9/25/2014 12:34:50 PM	(GMT --07:00) Pacific Standard Time	UC Davis	D8XSMGH1
Name :		Instrument	Run		9/25/2014 12:34:50 PM	(GMT --07:00) Pacific Standard Time	UC Davis	D8XSMGH1
Vendor : Agilent Technologies		Instrument	Run		9/25/2014 12:34:50 PM	(GMT --07:00) Pacific Standard Time	UC Davis	D8XSMGH1
Serial# : DE13701086		Instrument	Run		9/25/2014 12:34:50 PM	(GMT --07:00) Pacific Standard Time	UC Davis	D8XSMGH1
Firmware : C.01.069		Instrument	Run		9/25/2014 12:34:50 PM	(GMT --07:00) Pacific Standard Time	UC Davis	D8XSMGH1
Cartridge : Electrode		Instrument	Run		9/25/2014 12:34:50 PM	(GMT --07:00) Pacific Standard Time	UC Davis	D8XSMGH1