

Assay Class: High Sensitivity DNA Assay  
Data Path: C:\Documents and Settings\UC Davis\Desktop\2014-09-26\_003.xad

Created: 9/26/2014 12:23:43 PM  
Modified: 9/26/2014 1:18:22 PM

**Electrophoresis File Run Summary**

Instrument Information:

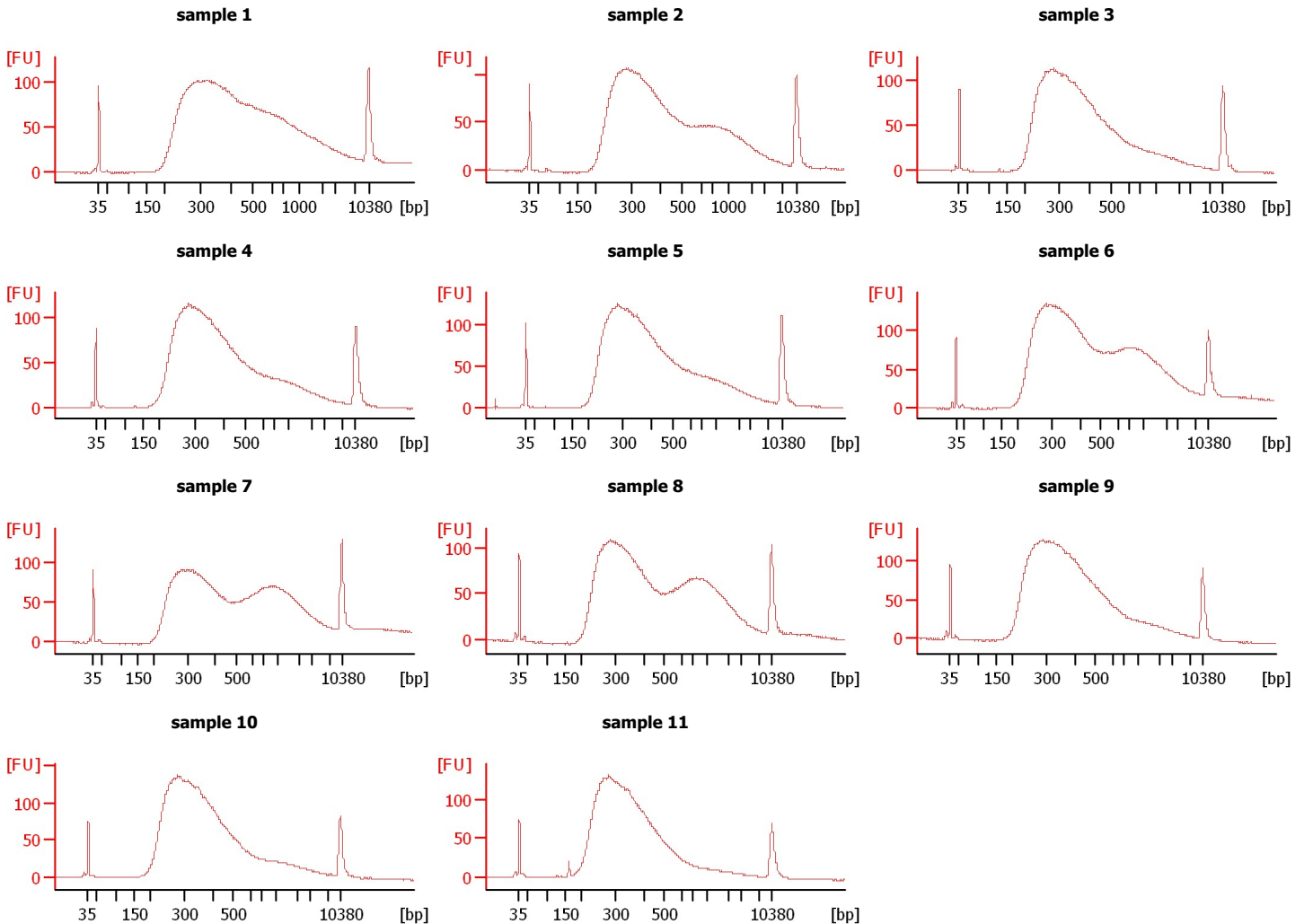
Instrument Name: DE13701086      Firmware: C.01.069  
Serial#: DE13701086      Type: G2938B

Assay Information:

Assay Origin Path: C:\Program Files\Agilent\2100 bioanalyzer\2100 expert\assays\dsDNA\High Sensitivity DNA.xsy  
Assay Class: High Sensitivity DNA Assay  
Version: 1.03  
Assay Comments: Copyright © 2003-2010 Agilent Technologies

Chip Information:

Chip Lot #:  
Reagent Kit Lot #:  
Chip Comments:



Assay Class: High Sensitivity DNA Assay  
 Data Path: C:\Documents and Settings\UC Davis\Desktop\2014-09-26\_003.xad

Created: 9/26/2014 12:23:43 PM  
 Modified: 9/26/2014 1:18:22 PM

**Electrophoresis File Run Summary (Chip Summary)**

Sample Name	Sample Comment	Rest. Digest	Status	Observation	Result Label	Result Color
sample 1		<input type="checkbox"/>	✓			
sample 2		<input type="checkbox"/>	✓			
sample 3		<input type="checkbox"/>	✓			
sample 4		<input type="checkbox"/>	✓			
sample 5		<input type="checkbox"/>	✓			
sample 6		<input type="checkbox"/>	✓			
sample 7		<input type="checkbox"/>	✓			
sample 8		<input type="checkbox"/>	✓			
sample 9		<input type="checkbox"/>	✓			
sample 10		<input type="checkbox"/>	✓			
sample 11		<input type="checkbox"/>	✓			
Ladder		<input type="checkbox"/>	✓			

**Chip Lot #**

**Reagent Kit Lot #**

**Chip Comments :**

Assay Class: High Sensitivity DNA Assay  
Data Path: C:\Documents and Settings\UC Davis\Desktop\2014-09-26\_003.xad

Created: 9/26/2014 12:23:43 PM  
Modified: 9/26/2014 1:18:22 PM

**Electrophoresis Assay Details**

**General Analysis Settings**

Number of Available Sample and Ladder Wells (Max.) : 12  
Minimum Visible Range [s] : 32  
Maximum Visible Range [s] : 138  
Start Analysis Time Range [s] : 33  
End Analysis Time Range [s] : 137.5  
Ladder Concentration [pg/μl] : 1950  
Uses Standard Area for Ladder Fragments  
Lower Marker Concentration [pg/μl] : 125  
Upper Marker Concentration [pg/μl] : 75  
Used Upper Marker for Quantitation  
Standard Curve Fit is Point to Point  
Show Data Aligned to Lower and Upper Marker

**Integrator Settings**

Integration Start Time [s] : 33.05  
Integration End Time [s] : 137  
Slope Threshold : 0.8  
Height Threshold [FU] : 5  
Area Threshold : 0.1  
Width Threshold [s] : 0.6  
Baseline Plateau [s] : 0.5

**Filter Settings**

Filter Width [s] : 0.5  
Polynomial Order : 4

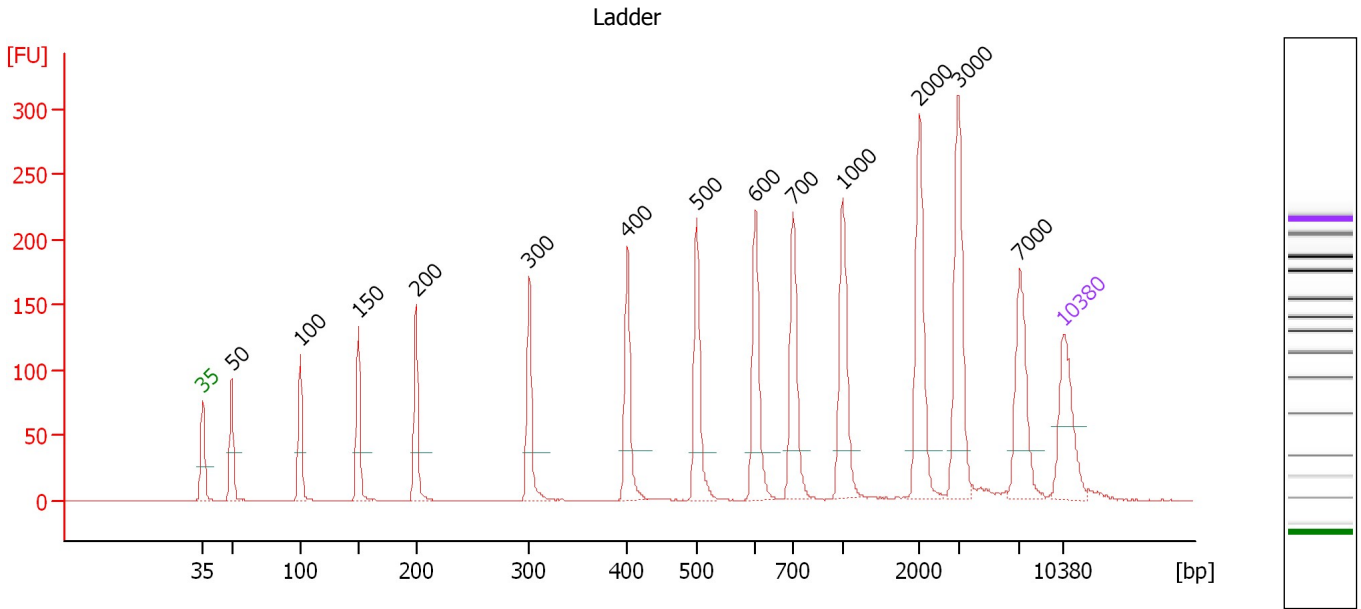
**Ladder**

Ladder Peak	Size	Area
1	35	160
2	50	210
3	100	208
4	150	221
5	200	242
6	300	270
7	400	305
8	500	306
9	600	336
10	700	321
11	1000	366
12	2000	413
13	3000	411
14	7000	400
15	10380	214

Assay Class: High Sensitivity DNA Assay  
 Data Path: C:\Documents and Settings\UC Davis\Desktop\2014-09-26\_003.xad

Created: 9/26/2014 12:23:43 PM  
 Modified: 9/26/2014 1:18:22 PM

**Electropherogram Summary**



**Overall Results for Ladder**

Noise: 0.2

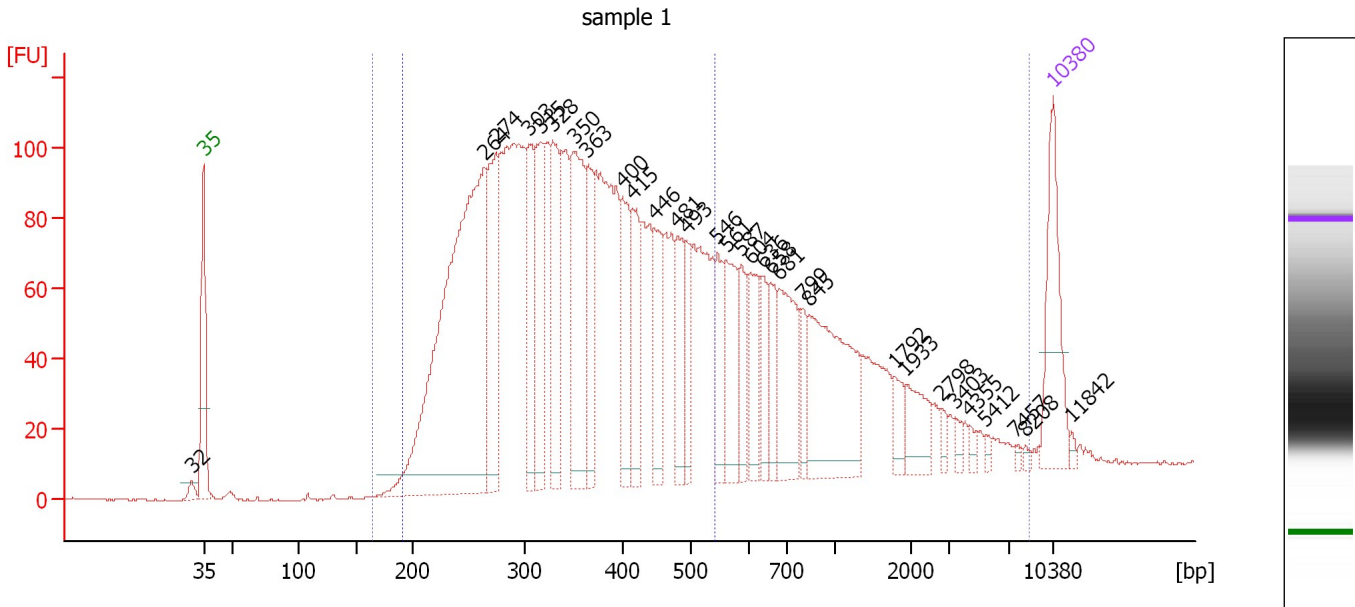
**Peak table for Ladder**

Peak	Size [bp]	Conc. [pg/μl]	Molarity [pmol/l]	Observations
1	35	125.00	5,411.3	Lower Marker
2	50	150.00	4,545.5	Ladder Peak
3	100	150.00	2,272.7	Ladder Peak
4	150	150.00	1,515.2	Ladder Peak
5	200	150.00	1,136.4	Ladder Peak
6	300	150.00	757.6	Ladder Peak
7	400	150.00	568.2	Ladder Peak
8	500	150.00	454.5	Ladder Peak
9	600	150.00	378.8	Ladder Peak
10	700	150.00	324.7	Ladder Peak
11	1,000	150.00	227.3	Ladder Peak
12	2,000	150.00	113.6	Ladder Peak
13	3,000	150.00	75.8	Ladder Peak
14	7,000	150.00	32.5	Ladder Peak
15	10,380	75.00	10.9	Upper Marker

Assay Class: High Sensitivity DNA Assay  
 Data Path: C:\Documents and Settings\UC Davis\Desktop\2014-09-26\_003.xad

Created: 9/26/2014 12:23:43 PM  
 Modified: 9/26/2014 1:18:22 PM

**Electropherogram Summary Continued ...**



**Overall Results for sample 1 : sample 1**

Number of peaks found: 31                      Corr. Area 1: 3,728.6  
 Noise: 0.2    Corr. Area 2: 2,777.1

**Peak table for sample 1 : sample 1**

Peak	Size [bp]	Conc. [pg/μl]	Molarity [pmol/l]	Observations
1	32	0.00	0.0	
2	35	125.00	5,411.3	Lower Marker
3	264	641.62	3,684.7	
4	274	152.70	845.0	
5	303	100.69	503.0	
6	315	111.48	536.5	
7	328	107.17	495.0	
8	350	166.86	722.2	
9	363	80.91	337.4	
10	400	88.20	333.9	
11	415	75.33	275.0	
12	446	64.72	219.7	
13	481	60.81	191.7	
14	493	45.30	139.2	
15	546	53.73	149.1	
16	561	71.10	192.1	
17	587	40.18	103.8	
18	604	56.14	140.9	
19	636	34.99	83.3	
20	658	38.64	89.0	
21	681	93.07	207.2	
22	799	25.61	48.5	
23	845	165.35	296.4	
24	1,792	17.93	15.2	
25	1,933	34.84	27.3	
26	2,798	6.89	3.7	

Assay Class: High Sensitivity DNA Assay  
 Data Path: C:\Documents and Settings\UC Davis\Desktop\2014-09-26\_003.xad



Created: 9/26/2014 12:23:43 PM  
 Modified: 9/26/2014 1:18:22 PM

### Electropherogram Summary Continued ...

#### ... Peak table for sample 1 : sample 1

Peak	Size [bp]	Conc. [pg/μl]	Molarity [pmol/l]	Observations
27	3,403	6.69	3.0	
28	4,355	5.85	2.0	
29	5,412	3.88	1.1	
30	7,457	2.74	0.6	
31	8,208	2.92	0.5	
32	10,380	75.00	10.9	Upper Marker
33	11,842	0.00	0.0	

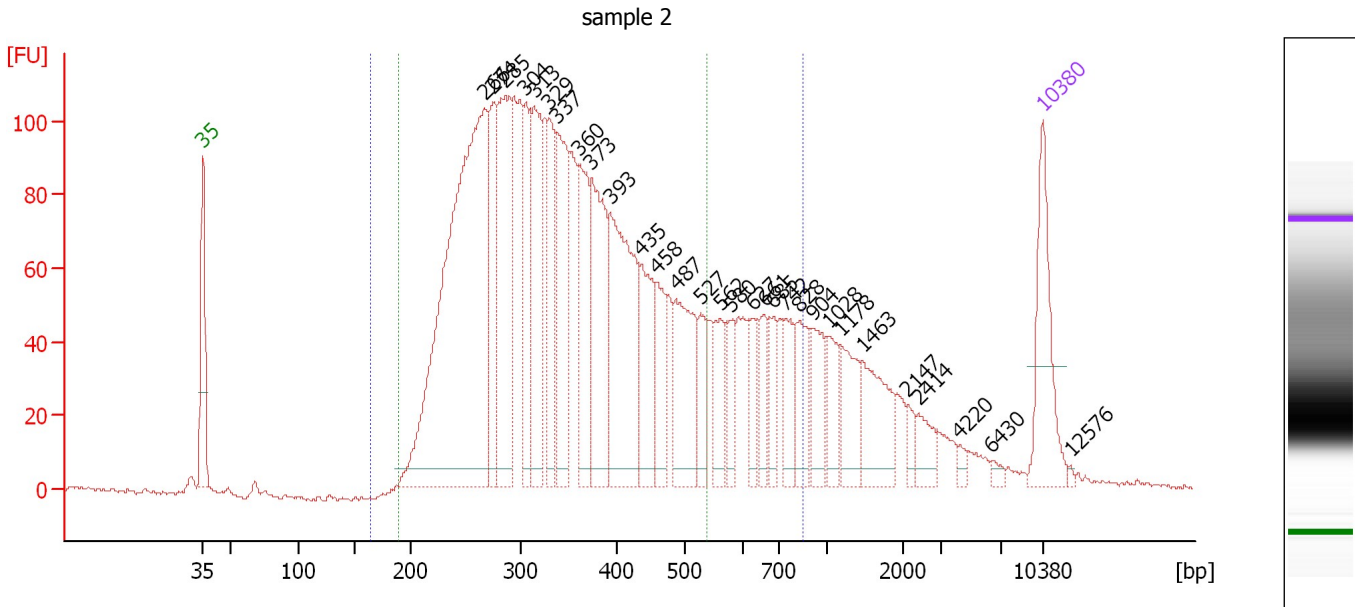
#### Region table for sample 1 : sample 1

From [bp]	Average Size [bp]	To [bp]	Corr. Area	% of Total	Size distribution in CV [%]	Conc. [pg/μl]	Molarity [pmol/l]	Color
165	654	8,500	3,728.6	99	100.0	3,548.01	14,581.5	
190	350	540	2,777.1	74	24.6	2,788.32	13,180.6	

Assay Class: High Sensitivity DNA Assay  
 Data Path: C:\Documents and Settings\UC Davis\Desktop\2014-09-26\_003.xad

Created: 9/26/2014 12:23:43 PM  
 Modified: 9/26/2014 1:18:22 PM

**Electropherogram Summary Continued ...**



**Overall Results for sample 2 : sample 2**

Number of peaks found: 30                      Corr. Area 1: 3,103.3  
 Noise: 0.6                                      Corr. Area 2: 2,680.4

**Peak table for sample 2 : sample 2**

Peak	Size [bp]	Conc. [pg/μl]	Molarity [pmol/l]	Observations
1	35	125.00	5,411.3	Lower Marker
2	266	680.22	3,871.4	
3	274	113.59	627.2	
4	285	209.39	1,111.4	
5	304	91.07	453.4	
6	313	148.39	717.7	
7	329	100.81	464.5	
8	337	135.51	608.9	
9	360	116.91	492.0	
10	373	158.90	644.8	
11	393	208.04	802.3	
12	435	88.36	307.8	
13	458	58.82	194.7	
14	487	110.72	344.5	
15	527	40.17	115.4	
16	562	39.17	105.6	
17	580	30.12	78.7	
18	627	35.62	86.0	
19	661	30.12	69.1	
20	685	34.00	75.2	
21	742	42.16	86.1	
22	828	48.19	88.2	
23	904	45.76	76.7	
24	1,028	34.95	51.5	
25	1,178	48.51	62.4	
26	1,463	64.54	66.9	

Assay Class: High Sensitivity DNA Assay  
 Data Path: C:\Documents and Settings\UC Davis\Desktop\2014-09-26\_003.xad



Created: 9/26/2014 12:23:43 PM  
 Modified: 9/26/2014 1:18:22 PM

**Electropherogram Summary Continued ...**

**... Peak table for sample 2 : sample 2**

Peak	Size [bp]	Conc. [pg/μl]	Molarity [pmol/l]	Observations
27	2,147	10.79	7.6	
28	2,414	20.71	13.0	
29	4,220	5.31	1.9	
30	6,430	4.93	1.2	
31	10,380	75.00	10.9	Upper Marker
32	12,576	0.00	0.0	

**Region table for sample 2 : sample 2**

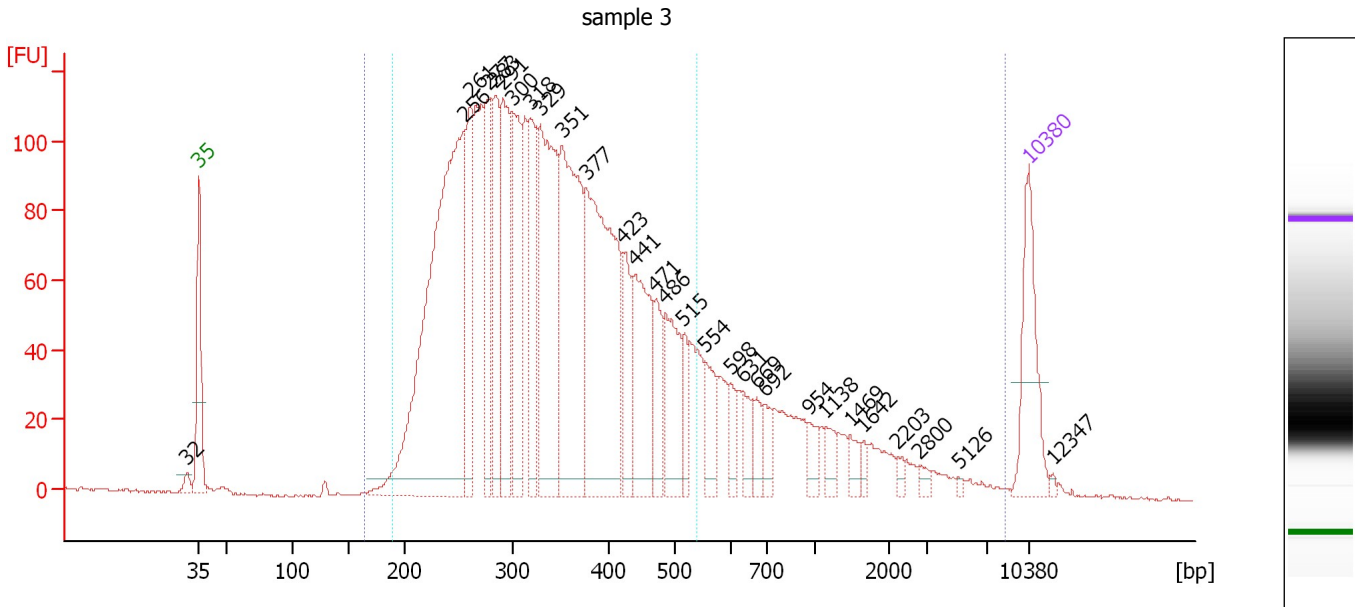
From [bp]	Average Size [bp]	To [bp]	Corr. Area	% of Total	Size distribution in CV [%]	Conc. [pg/μl]	Molarity [pmol/l]	Color
165	392	850	3,103.3	87	36.3	3,023.87	13,696.8	
190	340	540	2,680.4	75	24.0	2,668.08	12,853.3	



Assay Class: High Sensitivity DNA Assay  
 Data Path: C:\Documents and Settings\UC Davis\Desktop\2014-09-26\_003.xad

Created: 9/26/2014 12:23:43 PM  
 Modified: 9/26/2014 1:18:22 PM

**Electropherogram Summary Continued ...**



**Overall Results for sample 3 : sample 3**

Number of peaks found: 29                      Corr. Area 1: 3,445.9  
 Noise: 0.5                                      Corr. Area 2: 2,930.4

**Peak table for sample 3 : sample 3**

Peak	Size [bp]	Conc. [pg/μl]	Molarity [pmol/l]	Observations
1	32	0.00	0.0	
2	35	125.00	5,411.3	Lower Marker
3	256	654.24	3,877.0	
4	261	128.41	745.4	
5	277	119.69	654.4	
6	283	118.05	631.0	
7	291	162.57	847.2	
8	300	139.32	704.8	
9	318	124.18	591.6	
10	329	262.53	1,210.0	
11	351	283.48	1,222.7	
12	377	329.92	1,327.1	
13	423	66.51	238.3	
14	441	127.46	437.7	
15	471	52.20	167.7	
16	486	87.69	273.5	
17	515	30.15	88.6	
18	554	40.31	110.2	
19	598	22.59	57.2	
20	631	25.91	62.2	
21	669	20.87	47.3	
22	692	21.00	46.0	
23	954	16.81	26.7	
24	1,138	17.76	23.6	
25	1,469	13.10	13.5	
26	1,642	6.76	6.2	

Assay Class: High Sensitivity DNA Assay  
 Data Path: C:\Documents and Settings\UC Davis\Desktop\2014-09-26\_003.xad


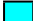
Created: 9/26/2014 12:23:43 PM  
 Modified: 9/26/2014 1:18:22 PM

### Electropherogram Summary Continued ...

#### ... Peak table for sample 3 : sample 3

Peak	Size [bp]	Conc. [pg/μl]	Molarity [pmol/l]	Observations
27	2,203	5.51	3.8	
28	2,800	5.65	3.1	
29	5,126	2.09	0.6	
30	10,380	75.00	10.9	Upper Marker
31	12,347	0.00	0.0	

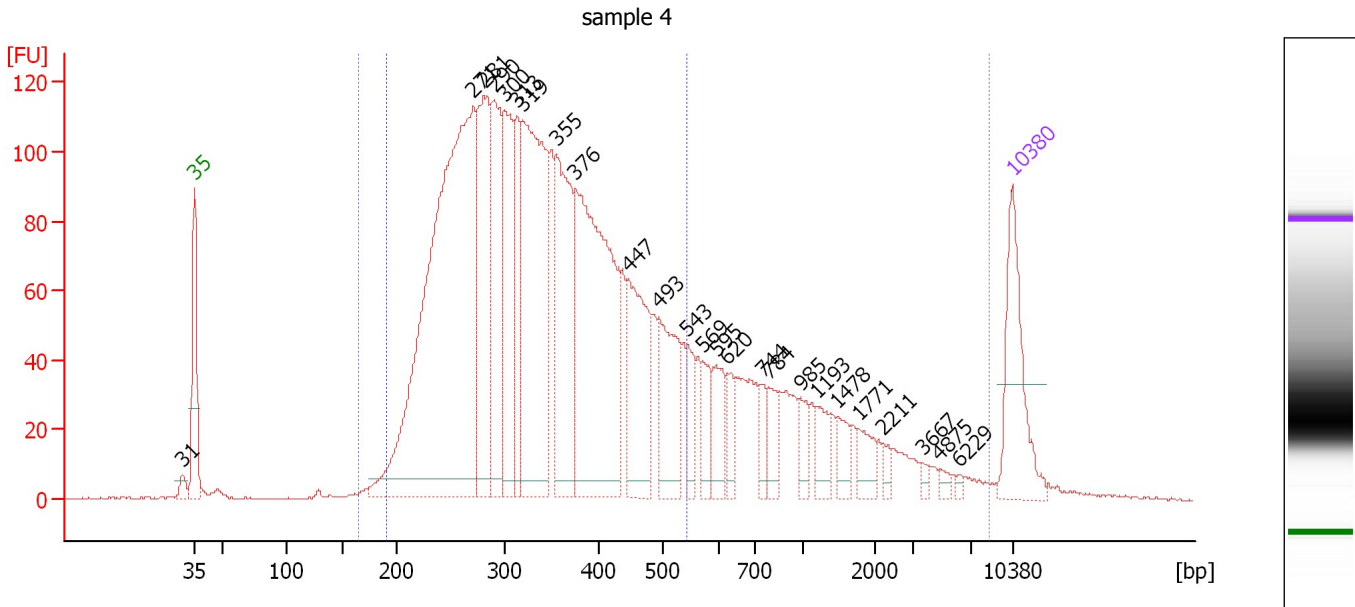
#### Region table for sample 3 : sample 3

From [bp]	Average Size [bp]	To [bp]	Corr. Area	% of Total	Size distribution in CV [%]	Conc. [pg/μl]	Molarity [pmol/l]	Color
165	520	8,500	3,445.9	99	100.0	3,430.09	15,564.7	
190	336	540	2,930.4	84	24.4	3,010.63	14,735.4	

Assay Class: High Sensitivity DNA Assay  
 Data Path: C:\Documents and Settings\UC Davis\Desktop\2014-09-26\_003.xad

Created: 9/26/2014 12:23:43 PM  
 Modified: 9/26/2014 1:18:22 PM

**Electropherogram Summary Continued ...**



**Overall Results for sample 4 : sample 4**

Number of peaks found: 25                      Corr. Area 1: 3,582.4  
 Noise: 0.3    Corr. Area 2: 2,914.4

**Peak table for sample 4 : sample 4**

Peak	Size [bp]	Conc. [pg/μl]	Molarity [pmol/l]	Observations
1	31	0.00	0.0	
2	35	125.00	5,411.3	Lower Marker
3	271	756.94	4,239.4	
4	281	200.25	1,080.1	
5	290	157.83	823.8	
6	300	136.99	692.6	
7	313	91.83	444.9	
8	319	320.81	1,523.4	
9	355	182.65	779.4	
10	376	347.21	1,400.3	
11	447	123.67	419.7	
12	493	94.05	289.3	
13	543	30.60	85.4	
14	569	29.80	79.4	
15	595	36.80	93.8	
16	620	22.39	54.7	
17	744	16.36	33.3	
18	784	24.84	48.0	
19	985	19.87	30.6	
20	1,193	22.14	28.1	
21	1,478	18.40	18.9	
22	1,771	19.32	16.5	
23	2,211	7.19	4.9	
24	3,667	4.34	1.8	
25	4,875	4.64	1.4	
26	6,229	2.59	0.6	

Assay Class: High Sensitivity DNA Assay  
 Data Path: C:\Documents and Settings\UC Davis\Desktop\2014-09-26\_003.xad



Created: 9/26/2014 12:23:43 PM  
 Modified: 9/26/2014 1:18:22 PM

### Electropherogram Summary Continued ...

#### ... Peak table for sample 4 : sample 4

Peak	Size [bp]	Conc. [pg/μl]	Molarity [pmol/l]	Observations
27	10,380	75.00	10.9	Upper Marker

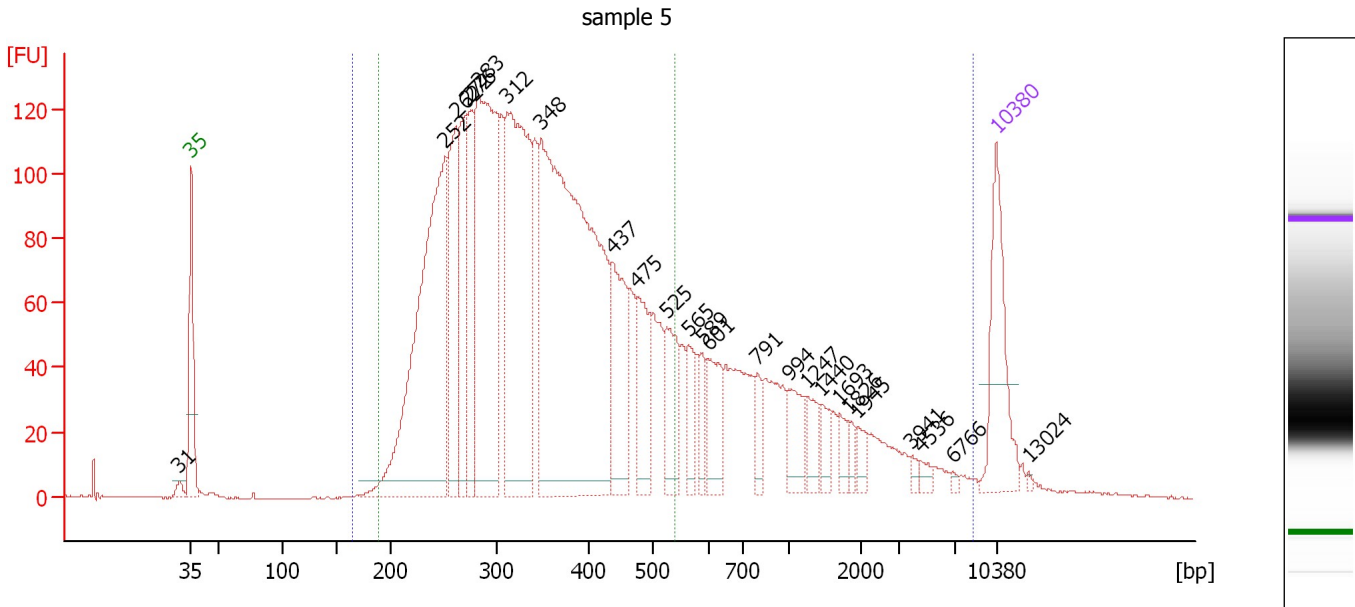
#### Region table for sample 4 : sample 4

From [bp]	Average Size [bp]	To [bp]	Corr. Area	% of Total	Size distribution in CV [%]	Conc. [pg/μl]	Molarity [pmol/l]	Color
165	582	8,500	3,582.4	99	100.0	3,062.42	13,556.2	
190	338	540	2,914.4	80	24.2	2,591.26	12,599.4	

Assay Class: High Sensitivity DNA Assay  
 Data Path: C:\Documents and Settings\UC Davis\Desktop\2014-09-26\_003.xad

Created: 9/26/2014 12:23:43 PM  
 Modified: 9/26/2014 1:18:22 PM

**Electropherogram Summary Continued ...**



**Overall Results for sample 5 : sample 5**

Number of peaks found: 25                      Corr. Area 1: 3,838.1  
 Noise: 0.2    Corr. Area 2: 3,074.0

**Peak table for sample 5 : sample 5**

Peak	Size [bp]	Conc. [pg/μl]	Molarity [pmol/l]	Observations
1	31	0.00	0.0	
2	35	125.00	5,411.3	Lower Marker
3	252	456.55	2,744.5	
4	262	142.08	821.4	
5	272	130.68	727.6	
6	276	100.97	554.0	
7	283	363.76	1,946.5	
8	312	349.58	1,698.4	
9	348	671.20	2,918.4	
10	437	102.96	356.8	
11	475	70.56	225.0	
12	525	62.69	181.0	
13	565	33.20	89.1	
14	589	22.05	56.7	
15	601	49.22	124.1	
16	791	18.83	36.1	
17	994	37.17	56.6	
18	1,247	19.88	24.1	
19	1,440	15.31	16.1	
20	1,693	13.46	12.1	
21	1,826	7.90	6.6	
22	1,945	11.37	8.9	
23	3,941	4.49	1.7	
24	4,536	6.07	2.0	
25	6,766	2.24	0.5	
26	10,380	75.00	10.9	Upper Marker



Assay Class: High Sensitivity DNA Assay  
Data Path: C:\Documents and Settings\UC Davis\Desktop\2014-09-26\_003.xad

Created: 9/26/2014 12:23:43 PM  
Modified: 9/26/2014 1:18:22 PM

**Electropherogram Summary Continued ...****... Peak table for sample 5 : sample 5**

Peak	Size [bp]	Conc. [pg/μl]	Molarity [pmol/l]	Observations
27	13,024	0.00	0.0	

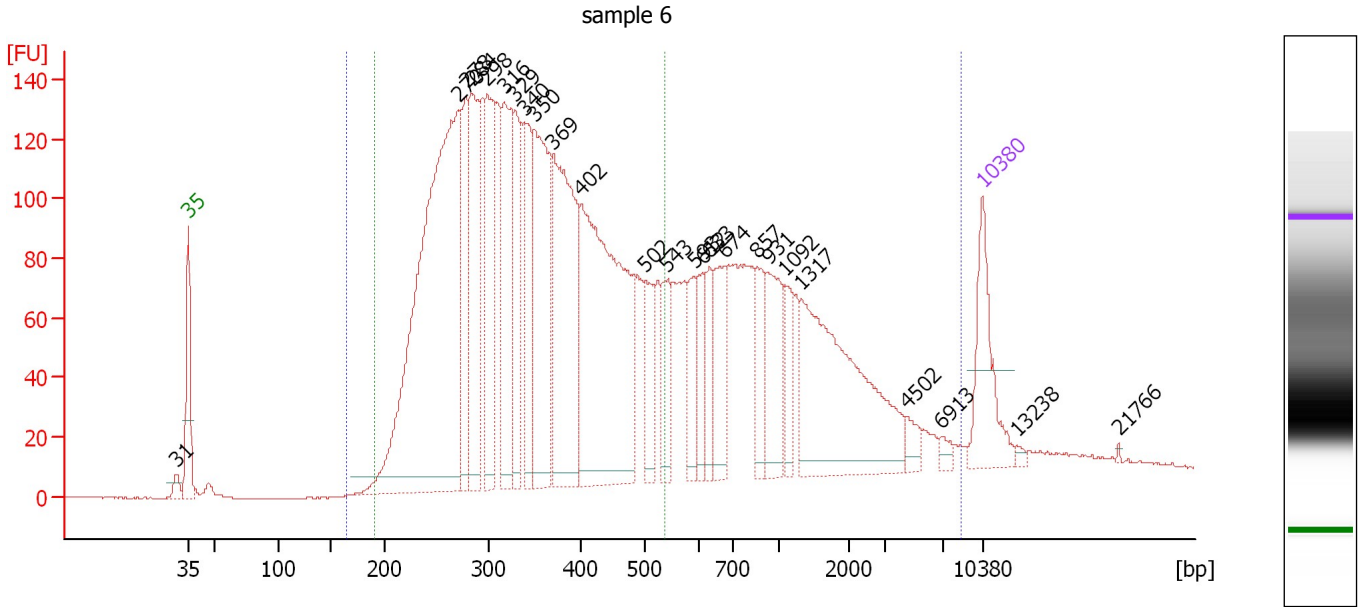
**Region table for sample 5 : sample 5**

From [bp]	Average Size [bp]	To [bp]	Corr. Area	% of Total	Size distribution in CV [%]	Conc. [pg/μl]	Molarity [pmol/l]	Color
165	609	8,500	3,838.1	99	100.0	3,184.74	13,769.3	
190	341	540	3,074.0	79	23.9	2,663.75	12,814.8	

Assay Class: High Sensitivity DNA Assay  
 Data Path: C:\Documents and Settings\UC Davis\Desktop\2014-09-26\_003.xad

Created: 9/26/2014 12:23:43 PM  
 Modified: 9/26/2014 1:18:22 PM

**Electropherogram Summary Continued ...**



**Overall Results for sample 6 : sample 6**

Number of peaks found: 25      Corr. Area 1: 4,675.0  
 Noise: 0.3      Corr. Area 2: 3,324.2

**Peak table for sample 6 : sample 6**

Peak	Size [bp]	Conc. [pg/μl]	Molarity [pmol/l]	Observations
1	31	0.00	0.0	
2	35	125.00	5,411.3	Lower Marker
3	270	800.34	4,491.1	
4	278	127.45	694.3	
5	284	190.22	1,013.9	
6	298	165.78	843.0	
7	316	187.70	900.2	
8	329	108.30	499.0	
9	340	102.15	455.2	
10	350	238.63	1,032.9	
11	369	296.19	1,214.6	
12	402	432.55	1,631.1	
13	502	61.75	186.3	
14	543	58.05	161.8	
15	593	48.81	124.8	
16	612	46.30	114.7	
17	633	44.47	106.5	
18	674	69.19	155.5	
19	857	51.33	90.7	
20	931	79.44	129.3	
21	1,092	37.47	52.0	
22	1,317	251.30	289.0	
23	4,502	14.07	4.7	
24	6,913	8.03	1.8	
25	10,380	75.00	10.9	Upper Marker
26	13,238	0.00	0.0	



Assay Class: High Sensitivity DNA Assay  
Data Path: C:\Documents and Settings\UC Davis\Desktop\2014-09-26\_003.xad

Created: 9/26/2014 12:23:43 PM  
Modified: 9/26/2014 1:18:22 PM

**Electropherogram Summary Continued ...****... Peak table for sample 6 : sample 6**

Peak	Size [bp]	Conc. [pg/ $\mu$ l]	Molarity [pmol/l]	Observations
27	21,766	0.00	0.0	

**Region table for sample 6 : sample 6**

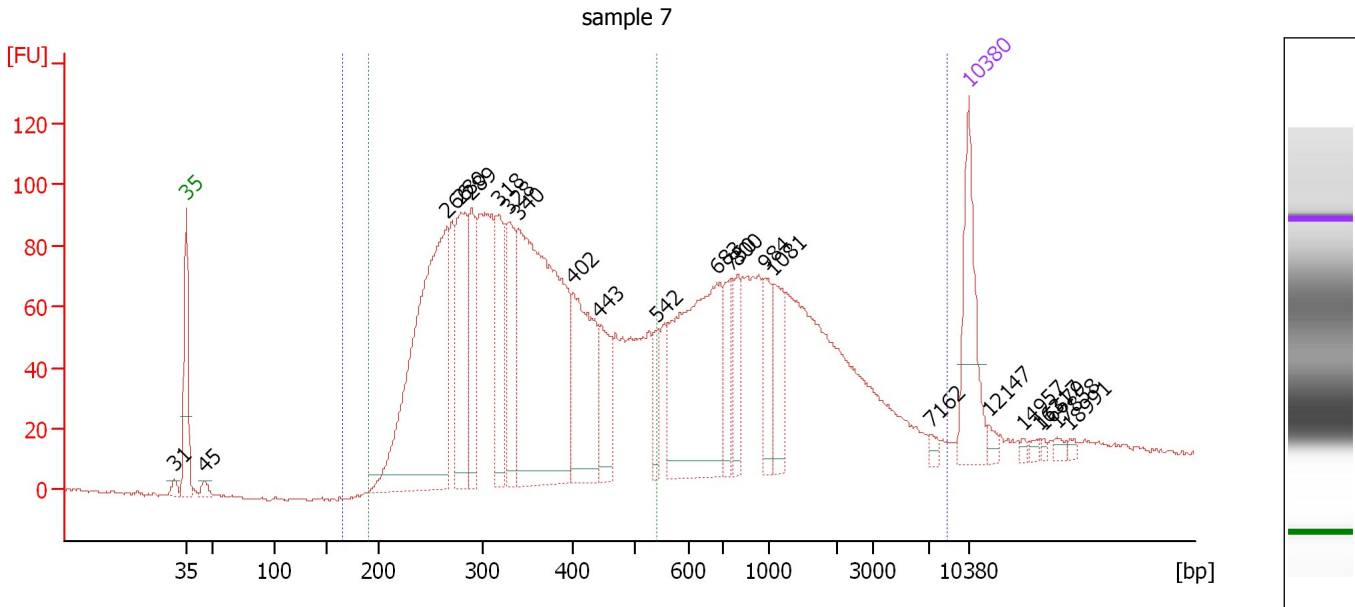
From [bp]	Average Size [bp]	To [bp]	Corr. Area	% of Total	Size distribution in CV [%]	Conc. [pg/ $\mu$ l]	Molarity [pmol/l]	Color
165	726	8,500	4,675.0	98	100.0	4,046.56	16,283.3	
190	345	540	3,324.2	70	23.9	3,069.74	14,609.0	



Assay Class: High Sensitivity DNA Assay  
 Data Path: C:\Documents and Settings\UC Davis\Desktop\2014-09-26\_003.xad

Created: 9/26/2014 12:23:43 PM  
 Modified: 9/26/2014 1:18:22 PM

**Electropherogram Summary Continued ...**



**Overall Results for sample 7 : sample 7**

Number of peaks found: 23                      Corr. Area 1: 3,259.3  
 Noise: 0.5    Corr. Area 2: 2,110.1

**Peak table for sample 7 : sample 7**



Peak	Size [bp]	Conc. [pg/μl]	Molarity [pmol/l]	Observations
1	31	0.00	0.0	
2	35	125.00	5,411.3	Lower Marker
3	45	11.33	378.3	
4	266	439.53	2,507.3	
5	280	147.10	797.3	
6	289	90.28	473.6	
7	318	104.47	498.5	
8	328	98.91	456.5	
9	340	449.87	2,006.8	
10	402	146.17	551.3	
11	443	64.15	219.3	
12	542	28.37	79.3	
13	683	253.02	561.2	
14	750	41.18	83.2	
15	800	40.68	77.1	
16	984	38.15	58.7	
17	1,081	50.40	70.7	
18	7,162	5.02	1.1	
19	10,380	75.00	10.9	Upper Marker
20	12,147	0.00	0.0	
21	14,957	0.00	0.0	
22	16,317	0.00	0.0	
23	16,679	0.00	0.0	
24	17,858	0.00	0.0	
25	18,991	0.00	0.0	

Assay Class: High Sensitivity DNA Assay  
Data Path: C:\Documents and Settings\UC Davis\Desktop\2014-09-26\_003.xad

Created: 9/26/2014 12:23:43 PM  
Modified: 9/26/2014 1:18:22 PM

**Electropherogram Summary Continued ...**

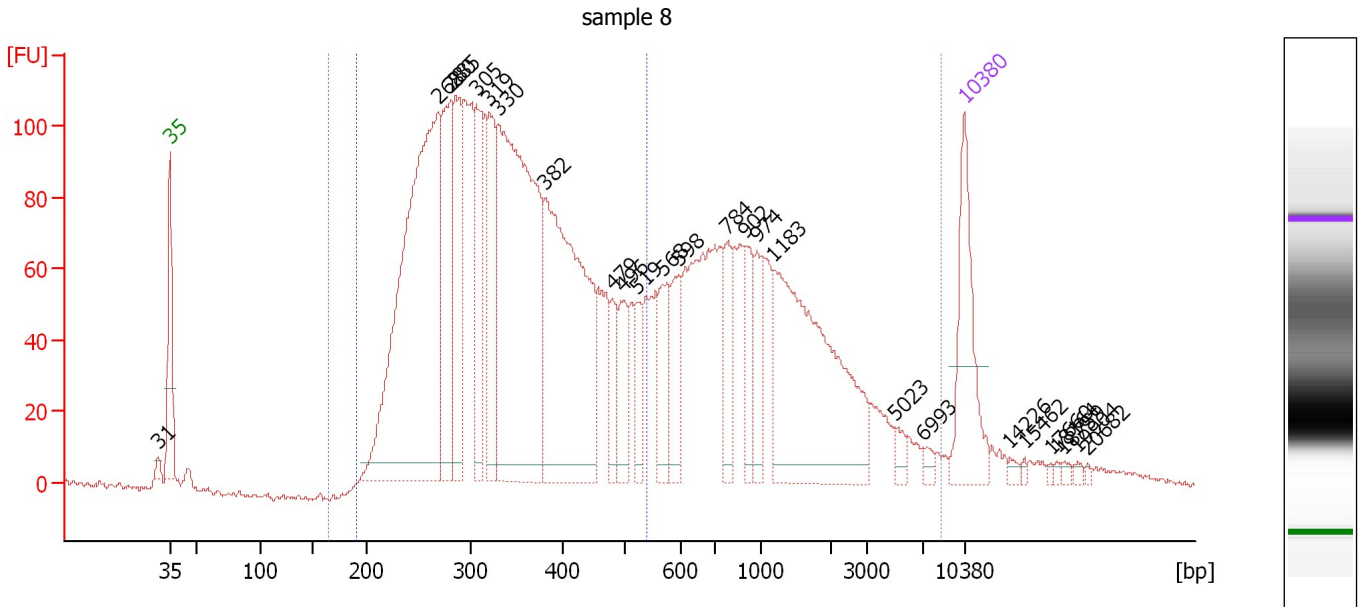
... Region table for sample 7 : sample 7

From [bp]	Average Size [bp]	To [bp]	Corr. Area	% of Total	Size distribution in CV [%]	Conc. [pg/μl]	Molarity [pmol/l]	Color
165	809	8,500	3,259.3	98	100.0	2,699.22	10,304.8	
190	345	540	2,110.1	63	23.6	1,895.50	8,979.4	

Assay Class: High Sensitivity DNA Assay  
 Data Path: C:\Documents and Settings\UC Davis\Desktop\2014-09-26\_003.xad

Created: 9/26/2014 12:23:43 PM  
 Modified: 9/26/2014 1:18:22 PM

**Electropherogram Summary Continued ...**



**Overall Results for sample 8 : sample 8**

Number of peaks found: 26                      Corr. Area 1: 3,792.8  
 Noise: 0.9    Corr. Area 2: 2,582.5

**Peak table for sample 8 : sample 8**

Peak	Size [bp]	Conc. [pg/μl]	Molarity [pmol/l]	Observations
1	31	0.00	0.0	
2	35	125.00	5,411.3	Lower Marker
3	268	550.63	3,110.5	
4	280	137.23	742.1	
5	285	124.35	661.3	
6	305	95.98	476.1	
7	319	115.03	546.8	
8	330	446.33	2,051.7	
9	382	340.74	1,351.0	
10	479	35.25	111.5	
11	496	43.81	133.8	
12	519	33.62	98.2	
13	568	52.25	139.4	
14	598	47.46	120.2	
15	784	38.08	73.6	
16	902	39.53	66.4	
17	974	39.10	60.8	
18	1,183	239.88	307.3	
19	5,023	7.91	2.4	
20	6,993	5.45	1.2	
21	10,380	75.00	10.9	Upper Marker
22	14,226	0.00	0.0	
23	15,462	0.00	0.0	
24	17,660	0.00	0.0	
25	18,164	0.00	0.0	
26	18,759	0.00	0.0	

Assay Class: High Sensitivity DNA Assay  
 Data Path: C:\Documents and Settings\UC Davis\Desktop\2014-09-26\_003.xad



Created: 9/26/2014 12:23:43 PM  
 Modified: 9/26/2014 1:18:22 PM

### Electropherogram Summary Continued ...

#### ... Peak table for sample 8 : sample 8

Peak	Size [bp]	Conc. [pg/ $\mu$ l]	Molarity [pmol/l]	Observations
27	19,904	0.00	0.0	
28	20,682	0.00	0.0	

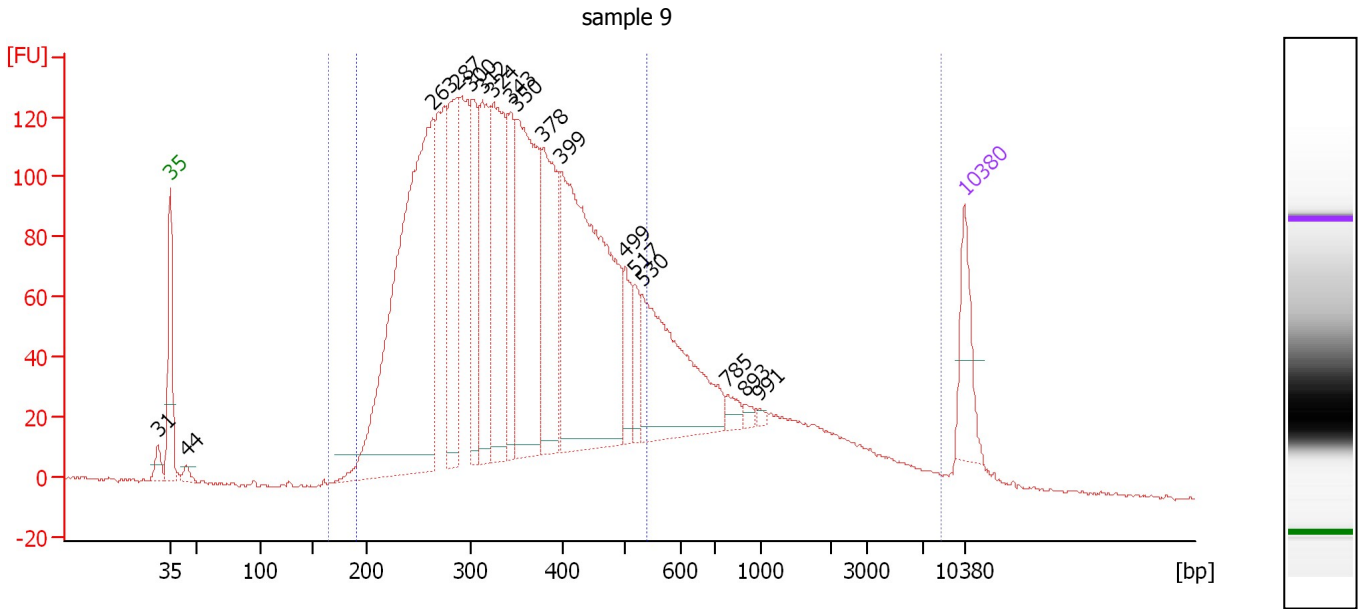
#### Region table for sample 8 : sample 8

From [bp]	Average Size [bp]	To [bp]	Corr. Area	% of Total	Size distribution in CV [%]	Conc. [pg/ $\mu$ l]	Molarity [pmol/l]	Color
165	762	8,500	3,792.8	98	100.0	3,023.07	11,946.3	
190	342	540	2,582.5	67	23.8	2,214.81	10,593.1	

Assay Class: High Sensitivity DNA Assay  
 Data Path: C:\Documents and Settings\UC Davis\Desktop\2014-09-26\_003.xad

Created: 9/26/2014 12:23:43 PM  
 Modified: 9/26/2014 1:18:22 PM

**Electropherogram Summary Continued ...**



**Overall Results for sample 9 : sample 9**

Number of peaks found: 17      Corr. Area 1: 4,152.9  
 Noise: 0.6      Corr. Area 2: 3,428.5

**Peak table for sample 9 : sample 9**

Peak	Size [bp]	Conc. [pg/μl]	Molarity [pmol/l]	Observations
1	31	0.00	0.0	
2	35	125.00	5,411.3	Lower Marker
3	44	17.07	587.9	
4	263	1,006.34	5,797.9	
5	287	248.60	1,314.3	
6	300	178.19	899.1	
7	312	228.63	1,110.9	
8	324	326.95	1,529.1	
9	343	132.72	586.6	
10	350	441.59	1,911.1	
11	378	241.66	968.6	
12	399	672.64	2,556.2	
13	499	72.81	221.2	
14	517	47.12	138.2	
15	530	309.00	883.3	
16	785	19.54	37.7	
17	893	8.99	15.3	
18	991	5.60	8.6	
19	10,380	75.00	10.9	Upper Marker

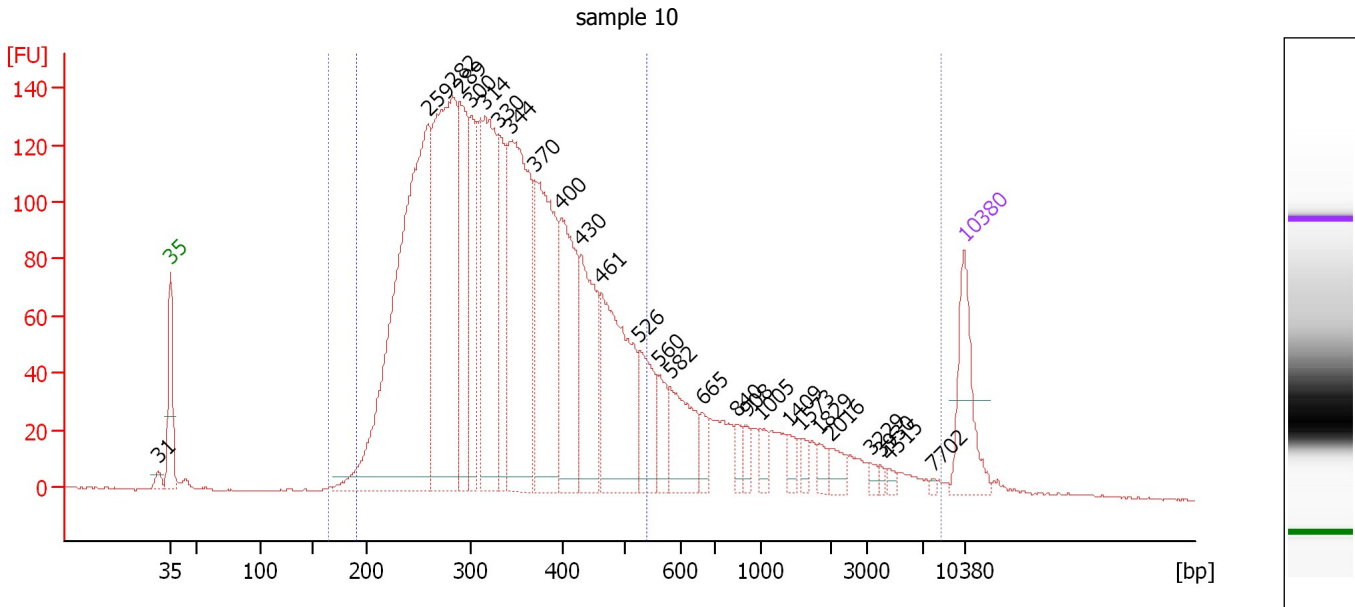
**Region table for sample 9 : sample 9**

From [bp]	Average Size [bp]	To [bp]	Corr. Area	% of Total	Size distribution in CV [%]	Conc. [pg/μl]	Molarity [pmol/l]	Color
165	578	8,500	4,152.9	99	100.0	5,409.18	23,579.8	Blue
190	345	540	3,428.5	81	24.2	4,631.27	22,082.4	Dark Blue

Assay Class: High Sensitivity DNA Assay  
 Data Path: C:\Documents and Settings\UC Davis\Desktop\2014-09-26\_003.xad

Created: 9/26/2014 12:23:43 PM  
 Modified: 9/26/2014 1:18:22 PM

**Electropherogram Summary Continued ...**



**Overall Results for sample 10 : sample 10**

Number of peaks found: 27      Corr. Area 1: 3,929.6  
 Noise: 0.3      Corr. Area 2: 3,349.7

**Peak table for sample 10 : sample 10**

Peak	Size [bp]	Conc. [pg/μl]	Molarity [pmol/l]	Observations
1	31	0.00	0.0	
2	35	125.00	5,411.3	Lower Marker
3	259	803.17	4,702.7	
4	282	531.69	2,852.3	
5	289	202.98	1,063.1	
6	300	141.68	714.7	
7	314	298.78	1,440.0	
8	330	124.86	572.9	
9	344	403.80	1,780.7	
10	370	305.44	1,251.6	
11	400	205.20	778.1	
12	430	163.24	574.6	
13	461	239.35	785.9	
14	526	86.03	247.9	
15	560	42.81	115.8	
16	582	90.70	236.2	
17	665	23.08	52.6	
18	840	14.14	25.5	
19	908	14.40	24.0	
20	1,005	17.77	26.8	
21	1,409	13.87	14.9	
22	1,573	10.68	10.3	
23	1,829	12.60	10.4	
24	2,016	16.96	12.7	
25	3,229	5.98	2.8	
26	3,930	4.17	1.6	

Assay Class: High Sensitivity DNA Assay  
 Data Path: C:\Documents and Settings\UC Davis\Desktop\2014-09-26\_003.xad



Created: 9/26/2014 12:23:43 PM  
 Modified: 9/26/2014 1:18:22 PM

### Electropherogram Summary Continued ...

#### ... Peak table for sample 10 : sample 10

Peak	Size [bp]	Conc. [pg/μl]	Molarity [pmol/l]	Observations
27	4,515	4.99	1.7	
28	7,702	2.19	0.4	
29	10,380	75.00	10.9	Upper Marker

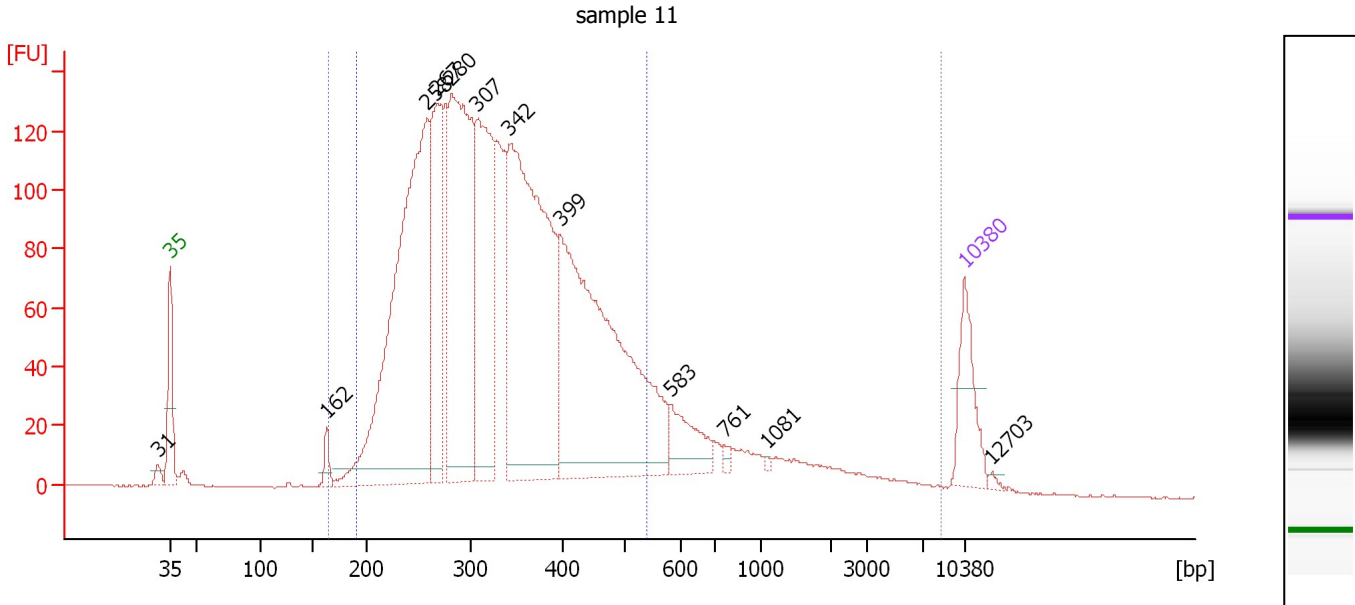
#### Region table for sample 10 : sample 10

From [bp]	Average Size [bp]	To [bp]	Corr. Area	% of Total	Size distribution in CV [%]	Conc. [pg/μl]	Molarity [pmol/l]	Color
165	548	8,500	3,929.6	99	100.0	4,068.73	18,318.5	
190	338	540	3,349.7	84	23.8	3,579.27	17,354.8	

Assay Class: High Sensitivity DNA Assay  
 Data Path: C:\Documents and Settings\UC Davis\Desktop\2014-09-26\_003.xad

Created: 9/26/2014 12:23:43 PM  
 Modified: 9/26/2014 1:18:22 PM

**Electropherogram Summary Continued ...**



**Overall Results for sample 11 : sample 11**

Number of peaks found: 12      Corr. Area 1: 3,536.8  
 Noise: 0.2      Corr. Area 2: 3,149.3

**Peak table for sample 11 : sample 11**

Peak	Size [bp]	Conc. [pg/μl]	Molarity [pmol/l]	Observations
1	31	0.00	0.0	
2	35	125.00	5,411.3	Lower Marker
3	162	25.83	241.0	
4	258	880.74	5,178.8	
5	267	285.55	1,619.2	
6	280	589.52	3,185.2	
7	307	383.00	1,891.8	
8	342	750.73	3,329.2	
9	399	716.10	2,721.8	
10	583	75.24	195.4	
11	761	7.82	15.6	
12	1,081	2.99	4.2	
13	10,380	75.00	10.9	Upper Marker
14	12,703	0.00	0.0	

**Region table for sample 11 : sample 11**

From [bp]	Average Size [bp]	To [bp]	Corr. Area	% of Total	Size distribution in CV [%]	Conc. [pg/μl]	Molarity [pmol/l]	Color
165	470	8,500	3,536.8	98	100.0	4,319.76	20,174.4	Blue
190	334	540	3,149.3	87	23.9	3,928.61	19,243.3	Blue



---

Assay Class: High Sensitivity DNA Assay  
Data Path: C:\Documents and Settings\UC Davis\Desktop\2014-09-26\_003.xad

Created: 9/26/2014 12:23:43 PM  
Modified: 9/26/2014 1:18:22 PM

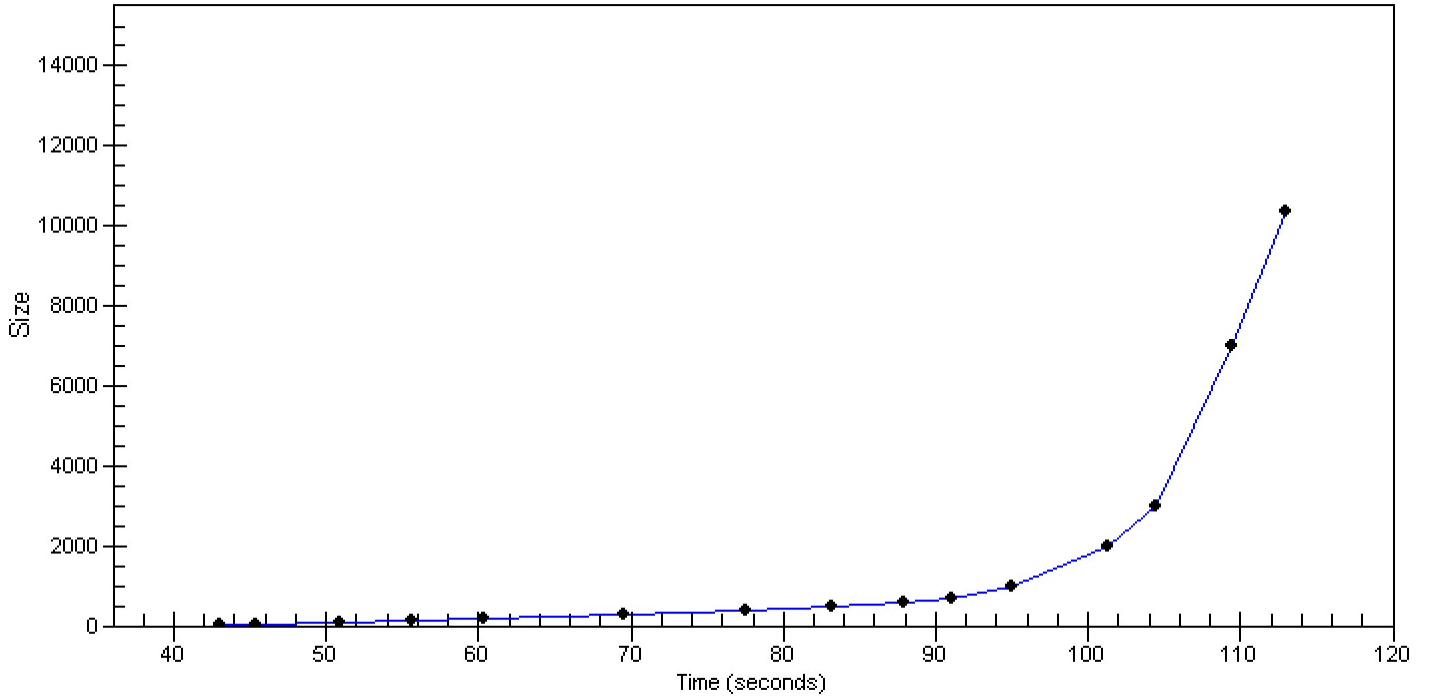
**Gel Image**

Assay Class: High Sensitivity DNA Assay  
Data Path: C:\Documents and Settings\UC Davis\Desktop\2014-09-26\_003.xad

Created: 9/26/2014 12:23:43 PM  
Modified: 9/26/2014 1:18:22 PM

**Curves**

**Standard Curve**



Assay Class: High Sensitivity DNA Assay  
 Data Path: C:\Documents and Settings\UC Davis\Desktop\2014-09-26\_003.xad

Created: 9/26/2014 12:23:43 PM  
 Modified: 9/26/2014 1:18:22 PM

**Run Logbook**

Description	Number	Source	Category	Sub Category	Time	Time Zone	User	Host
Run ended on port 1 (Number of wells acquired: 12)		Instrument	Run		9/26/2014 1:05:00 PM	(GMT --07:00) Pacific Standard Time	UC Davis	D8XSMGH1
Run started on port 1 (File: C:\Documents and Settings\Bioanalyser\2014-09-26\2014-09-26_003.xad)		Instrument	Run		9/26/2014 12:23:48 PM	(GMT --07:00) Pacific Standard Time	UC Davis	D8XSMGH1
Product Number : G2938B		Instrument	Run		9/26/2014 12:23:48 PM	(GMT --07:00) Pacific Standard Time	UC Davis	D8XSMGH1
Name :		Instrument	Run		9/26/2014 12:23:48 PM	(GMT --07:00) Pacific Standard Time	UC Davis	D8XSMGH1
Vendor : Agilent Technologies		Instrument	Run		9/26/2014 12:23:48 PM	(GMT --07:00) Pacific Standard Time	UC Davis	D8XSMGH1
Serial# : DE13701086		Instrument	Run		9/26/2014 12:23:48 PM	(GMT --07:00) Pacific Standard Time	UC Davis	D8XSMGH1
Firmware : C.01.069		Instrument	Run		9/26/2014 12:23:48 PM	(GMT --07:00) Pacific Standard Time	UC Davis	D8XSMGH1
Cartridge : Electrode		Instrument	Run		9/26/2014 12:23:48 PM	(GMT --07:00) Pacific Standard Time	UC Davis	D8XSMGH1