

Assay Class: High Sensitivity DNA Assay
Data Path: C:\Documents and Settings\UC Davis\Desktop\2014-09-26_004.xad

Created: 9/26/2014 1:11:33 PM
Modified: 9/26/2014 2:01:17 PM

Electrophoresis File Run Summary

Instrument Information:

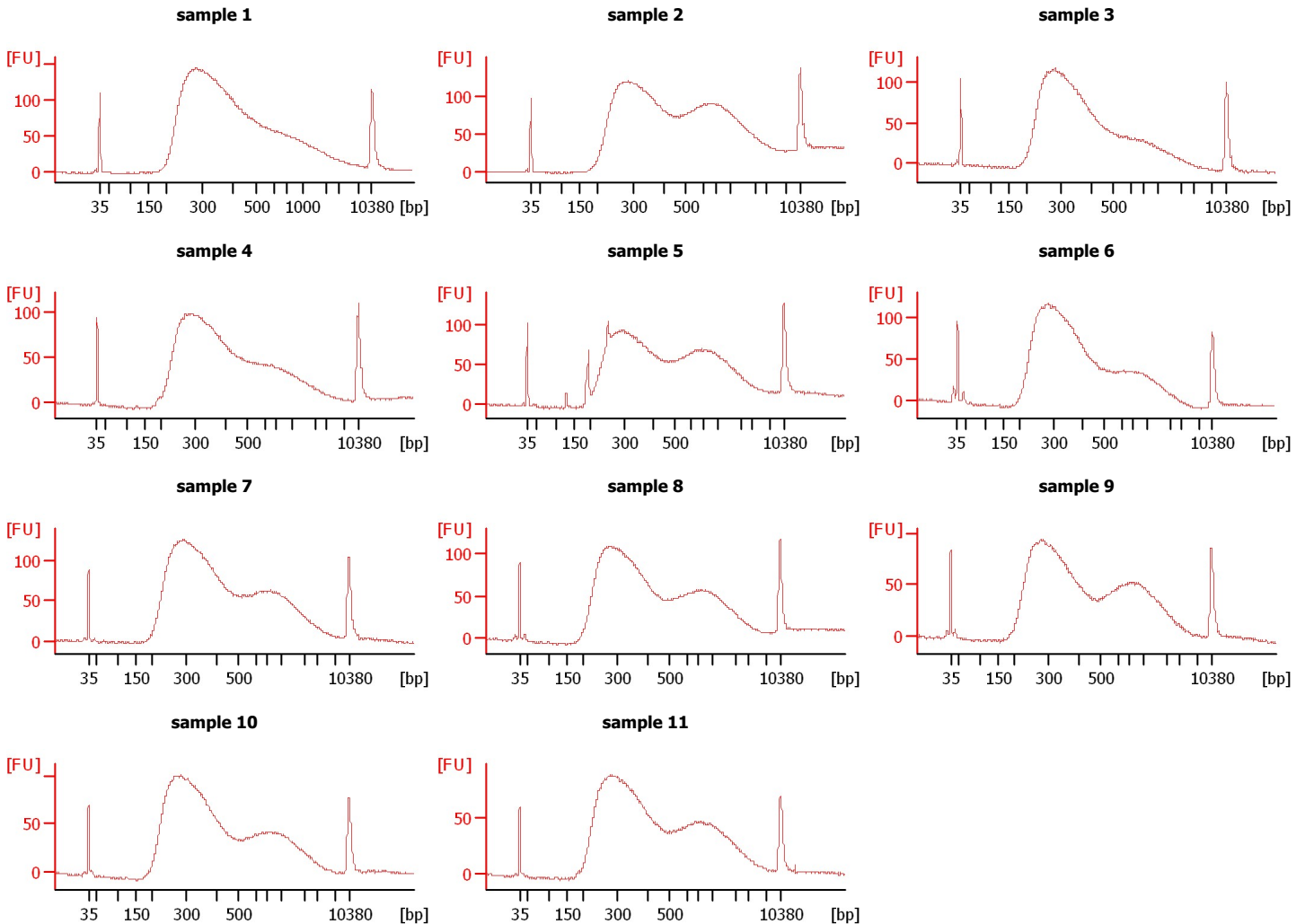
Instrument Name: DE13701086 Firmware: C.01.069
Serial#: DE13701086 Type: G2938B

Assay Information:

Assay Origin Path: C:\Program Files\Agilent\2100 bioanalyzer\2100 expert\assays\dsDNA\High Sensitivity DNA.xsy
Assay Class: High Sensitivity DNA Assay
Version: 1.03
Assay Comments: Copyright © 2003-2010 Agilent Technologies

Chip Information:

Chip Lot #:
Reagent Kit Lot #:
Chip Comments:



Assay Class: High Sensitivity DNA Assay
 Data Path: C:\Documents and Settings\UC Davis\Desktop\2014-09-26_004.xad

Created: 9/26/2014 1:11:33 PM
 Modified: 9/26/2014 2:01:17 PM

Electrophoresis File Run Summary (Chip Summary)

Sample Name	Sample Comment	Rest. Digest	Status	Observation	Result Label	Result Color
sample 1		<input type="checkbox"/>	✓			
sample 2		<input type="checkbox"/>	✓			
sample 3		<input type="checkbox"/>	✓			
sample 4		<input type="checkbox"/>	✓			
sample 5		<input type="checkbox"/>	✓			
sample 6		<input type="checkbox"/>	✓			
sample 7		<input type="checkbox"/>	✓			
sample 8		<input type="checkbox"/>	✓			
sample 9		<input type="checkbox"/>	✓			
sample 10		<input type="checkbox"/>	✓			
sample 11		<input type="checkbox"/>	✓			
Ladder		<input type="checkbox"/>	✓			

Chip Lot #

Reagent Kit Lot #

Chip Comments :

Assay Class: High Sensitivity DNA Assay
Data Path: C:\Documents and Settings\UC Davis\Desktop\2014-09-26_004.xad

Created: 9/26/2014 1:11:33 PM
Modified: 9/26/2014 2:01:17 PM

Electrophoresis Assay Details

General Analysis Settings

Number of Available Sample and Ladder Wells (Max.) : 12
Minimum Visible Range [s] : 32
Maximum Visible Range [s] : 138
Start Analysis Time Range [s] : 33
End Analysis Time Range [s] : 137.5
Ladder Concentration [pg/μl] : 1950
Uses Standard Area for Ladder Fragments
Lower Marker Concentration [pg/μl] : 125
Upper Marker Concentration [pg/μl] : 75
Used Upper Marker for Quantitation
Standard Curve Fit is Point to Point
Show Data Aligned to Lower and Upper Marker

Integrator Settings

Integration Start Time [s] : 33.05
Integration End Time [s] : 137
Slope Threshold : 0.8
Height Threshold [FU] : 5
Area Threshold : 0.1
Width Threshold [s] : 0.6
Baseline Plateau [s] : 0.5

Filter Settings

Filter Width [s] : 0.5
Polynomial Order : 4

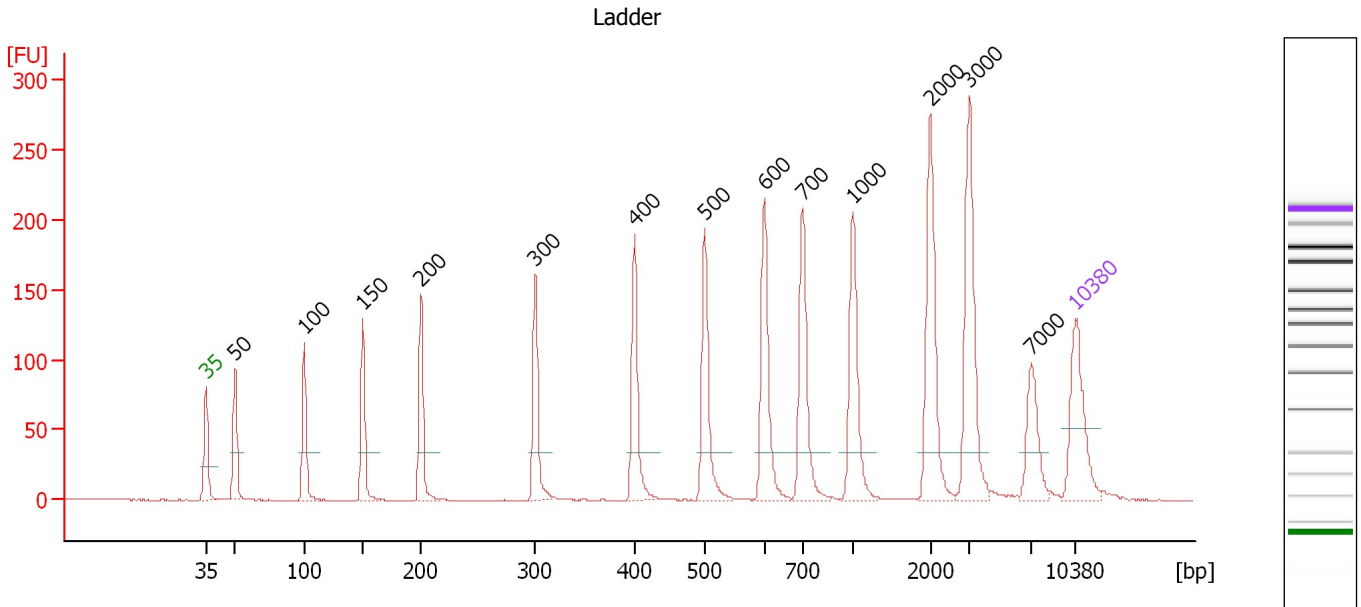
Ladder

Ladder Peak	Size	Area
1	35	160
2	50	210
3	100	208
4	150	221
5	200	242
6	300	270
7	400	305
8	500	306
9	600	336
10	700	321
11	1000	366
12	2000	413
13	3000	411
14	7000	400
15	10380	214

Assay Class: High Sensitivity DNA Assay
 Data Path: C:\Documents and Settings\UC Davis\Desktop\2014-09-26_004.xad

Created: 9/26/2014 1:11:33 PM
 Modified: 9/26/2014 2:01:17 PM

Electropherogram Summary



Overall Results for Ladder

Noise: 0.2

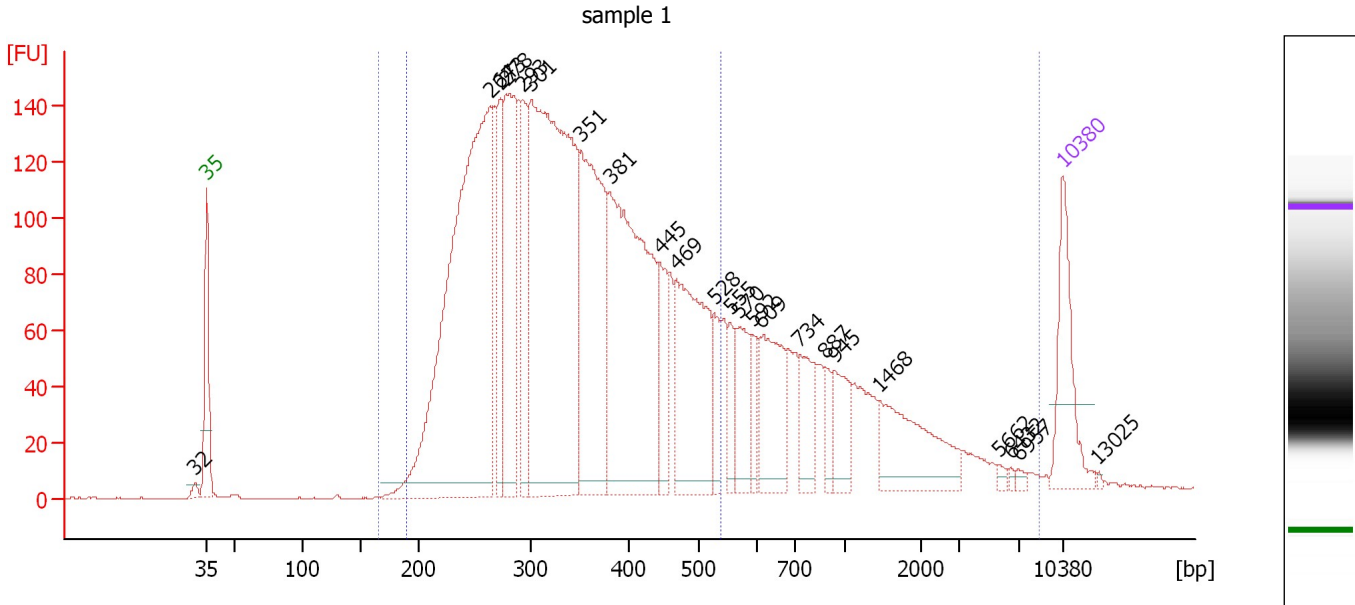
Peak table for Ladder

Peak	Size [bp]	Conc. [pg/μl]	Molarity [pmol/l]	Observations
1	35	125.00	5,411.3	Lower Marker
2	50	150.00	4,545.5	Ladder Peak
3	100	150.00	2,272.7	Ladder Peak
4	150	150.00	1,515.2	Ladder Peak
5	200	150.00	1,136.4	Ladder Peak
6	300	150.00	757.6	Ladder Peak
7	400	150.00	568.2	Ladder Peak
8	500	150.00	454.5	Ladder Peak
9	600	150.00	378.8	Ladder Peak
10	700	150.00	324.7	Ladder Peak
11	1,000	150.00	227.3	Ladder Peak
12	2,000	150.00	113.6	Ladder Peak
13	3,000	150.00	75.8	Ladder Peak
14	7,000	150.00	32.5	Ladder Peak
15	10,380	75.00	10.9	Upper Marker

Assay Class: High Sensitivity DNA Assay
 Data Path: C:\Documents and Settings\UC Davis\Desktop\2014-09-26_004.xad

Created: 9/26/2014 1:11:33 PM
 Modified: 9/26/2014 2:01:17 PM

Electropherogram Summary Continued ...



Overall Results for sample 1 : sample 1

Number of peaks found: 23 Corr. Area 1: 4,619.4
 Noise: 0.2 Corr. Area 2: 3,692.2

Peak table for sample 1 : sample 1



Peak	Size [bp]	Conc. [pg/μl]	Molarity [pmol/l]	Observations
1	32	0.00	0.0	
2	35	125.00	5,411.3	Lower Marker
3	264	823.70	4,736.0	
4	273	117.78	653.7	
5	278	253.90	1,385.1	
6	293	129.31	668.9	
7	301	766.32	3,862.7	
8	351	319.90	1,379.6	
9	381	448.99	1,786.4	
10	445	70.72	240.7	
11	469	227.94	736.3	
12	528	39.80	114.2	
13	555	31.48	85.9	
14	570	69.10	183.8	
15	592	27.97	71.6	
16	609	111.99	278.6	
17	734	57.14	118.0	
18	887	22.55	38.5	
19	945	50.46	80.9	
20	1,468	104.99	108.4	
21	5,662	3.88	1.0	
22	6,432	2.52	0.6	
23	6,957	3.56	0.8	
24	10,380	75.00	10.9	Upper Marker
25	13,025	0.00	0.0	

Assay Class: High Sensitivity DNA Assay
Data Path: C:\Documents and Settings\UC Davis\Desktop\2014-09-26_004.xad

Created: 9/26/2014 1:11:33 PM
Modified: 9/26/2014 2:01:17 PM

Electropherogram Summary Continued ...

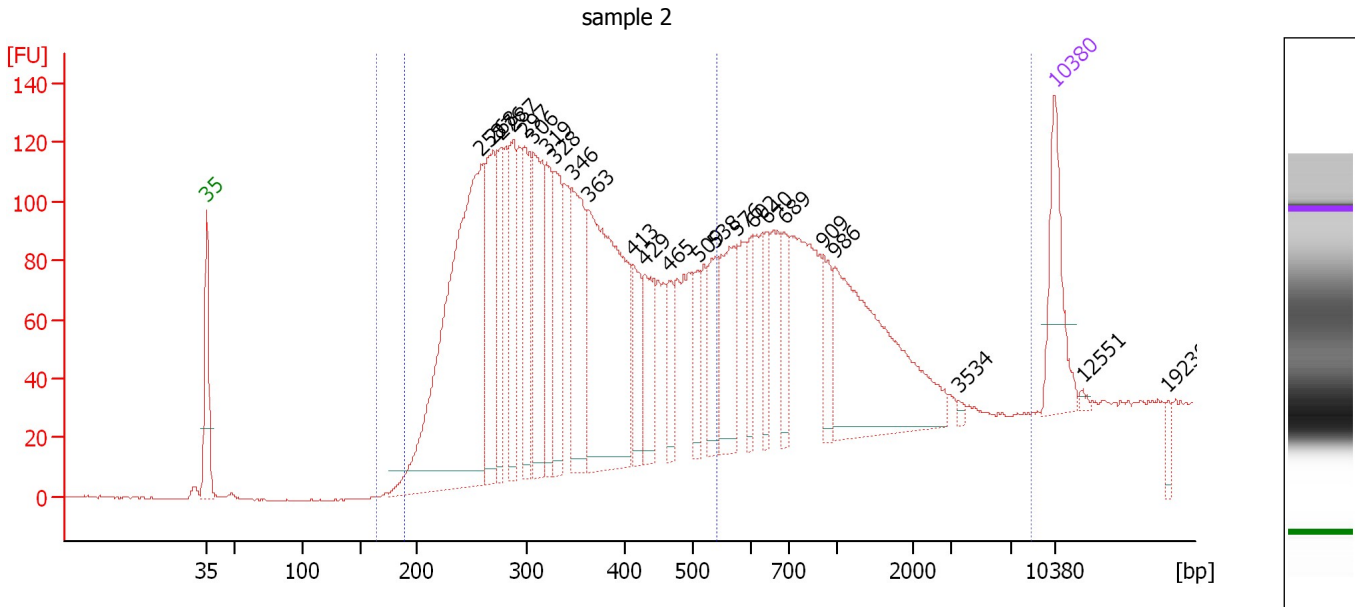
... Region table for sample 1 : sample 1

From [bp]	Average Size [bp]	To [bp]	Corr. Area	% of Total	Size distribution in CV [%]	Conc. [pg/ μ l]	Molarity [pmol/l]	Color
165	581	8,500	4,619.4	100	100.0	3,933.28	17,120.6	
190	340	540	3,692.2	80	24.4	3,281.48	15,890.6	

Assay Class: High Sensitivity DNA Assay
 Data Path: C:\Documents and Settings\UC Davis\Desktop\2014-09-26_004.xad

Created: 9/26/2014 1:11:33 PM
 Modified: 9/26/2014 2:01:17 PM

Electropherogram Summary Continued ...



Overall Results for sample 2 : sample 2

Number of peaks found: 24 Corr. Area 1: 3,757.0
 Noise: 0.3 Corr. Area 2: 2,683.5

Peak table for sample 2 : sample 2



Peak	Size [bp]	Conc. [pg/μl]	Molarity [pmol/l]	Observations
1	35	125.00	5,411.3	Lower Marker
2	258	652.17	3,824.2	
3	268	175.00	987.7	
4	276	103.55	569.2	
5	287	140.40	740.9	
6	297	111.75	569.7	
7	306	169.28	837.8	
8	319	92.81	440.3	
9	328	119.49	551.6	
10	346	149.84	656.5	
11	363	380.10	1,586.9	
12	413	61.67	226.3	
13	429	77.85	274.8	
14	465	42.42	138.2	
15	509	39.40	117.3	
16	538	66.88	188.2	
17	576	107.29	282.3	
18	602	42.33	106.5	
19	640	40.07	94.9	
20	689	39.70	87.3	
21	909	43.41	72.4	
22	986	263.36	404.6	
23	3,534	3.29	1.4	
24	10,380	75.00	10.9	Upper Marker
25	12,551	0.00	0.0	
26	19,230	0.00	0.0	

Assay Class: High Sensitivity DNA Assay
Data Path: C:\Documents and Settings\UC Davis\Desktop\2014-09-26_004.xad

Created: 9/26/2014 1:11:33 PM
Modified: 9/26/2014 2:01:17 PM

Electropherogram Summary Continued ...

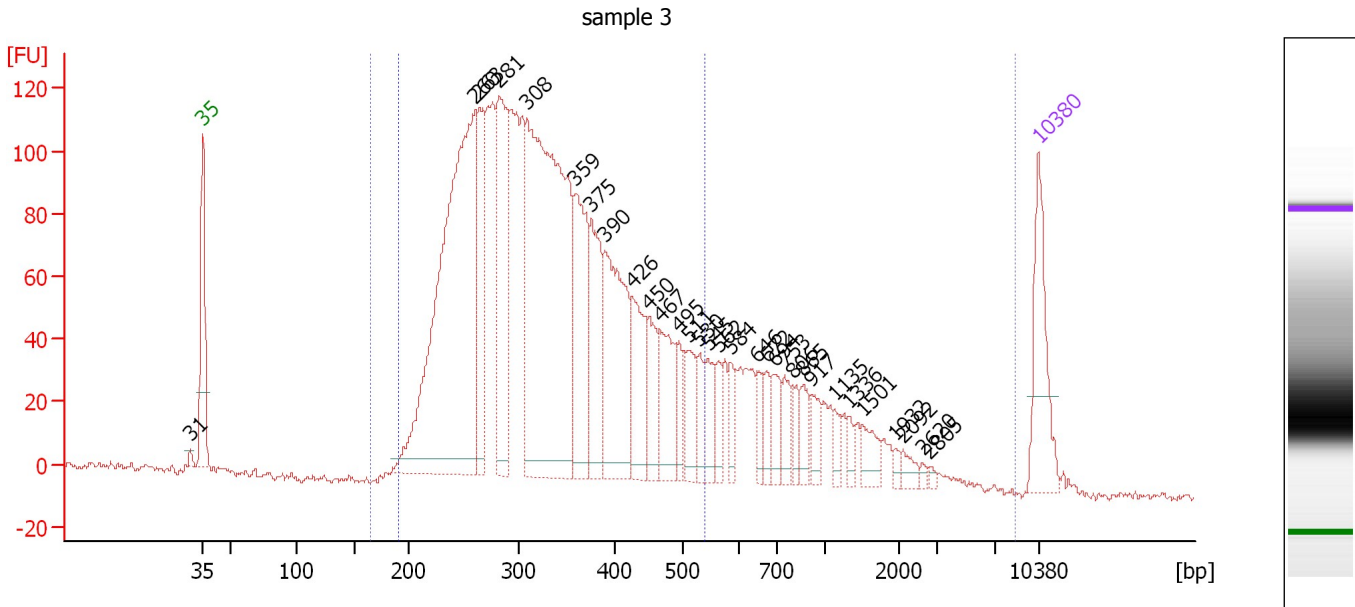
... Region table for sample 2 : sample 2

From [bp]	Average Size [bp]	To [bp]	Corr. Area	% of Total	Size distribution in CV [%]	Conc. [pg/ μ l]	Molarity [pmol/l]	Color
165	584	8,500	3,757.0	100	94.1	3,453.42	14,177.2	
190	343	540	2,683.5	71	24.8	2,617.93	12,590.5	

Assay Class: High Sensitivity DNA Assay
 Data Path: C:\Documents and Settings\UC Davis\Desktop\2014-09-26_004.xad

Created: 9/26/2014 1:11:33 PM
 Modified: 9/26/2014 2:01:17 PM

Electropherogram Summary Continued ...



Overall Results for sample 3 : sample 3

Number of peaks found: 31 Corr. Area 1: 3,396.3
 Noise: 1.3 Corr. Area 2: 2,840.2

Peak table for sample 3 : sample 3

Peak	Size [bp]	Conc. [pg/μl]	Molarity [pmol/l]	Observations
1	31	0.00	0.0	
2	35	125.00	5,411.3	Lower Marker
3	260	677.50	3,954.5	
4	263	143.35	824.3	
5	281	227.07	1,222.4	
6	308	636.54	3,128.2	
7	359	159.26	672.8	
8	375	118.71	479.1	
9	390	191.29	743.3	
10	426	89.90	319.7	
11	450	58.44	196.6	
12	467	74.95	243.2	
13	495	31.29	95.9	
14	511	43.79	129.8	
15	530	27.33	78.1	
16	545	38.76	107.8	
17	562	23.31	62.8	
18	584	23.60	61.3	
19	646	20.58	48.3	
20	672	22.03	49.6	
21	694	29.28	63.9	
22	753	27.02	54.3	
23	806	16.94	31.9	
24	865	23.48	41.1	
25	917	21.92	36.2	
26	1,135	12.06	16.1	

Assay Class: High Sensitivity DNA Assay
 Data Path: C:\Documents and Settings\UC Davis\Desktop\2014-09-26_004.xad



Created: 9/26/2014 1:11:33 PM
 Modified: 9/26/2014 2:01:17 PM

Electropherogram Summary Continued ...

... Peak table for sample 3 : sample 3

Peak	Size [bp]	Conc. [pg/µl]	Molarity [pmol/l]	Observations
27	1,336	9.71	11.0	
28	1,501	22.04	22.2	
29	1,932	5.41	4.2	
30	2,092	10.29	7.5	
31	2,620	3.45	2.0	
32	2,805	3.09	1.7	
33	10,380	75.00	10.9	Upper Marker

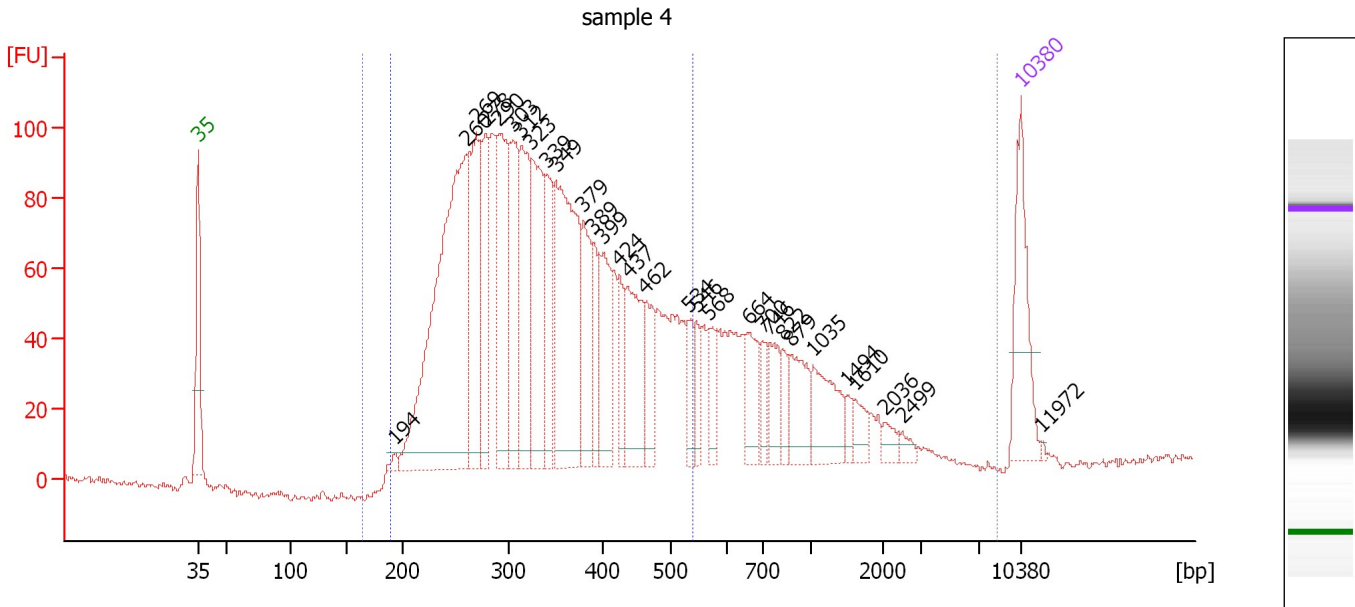
Region table for sample 3 : sample 3

From [bp]	Average Size [bp]	To [bp]	Corr. Area	% of Total	Size distribution in CV [%]	Conc. [pg/µl]	Molarity [pmol/l]	Color
165	475	8,500	3,396.3	99	91.6	3,379.48	15,301.8	
190	332	540	2,840.2	83	24.1	2,924.22	14,406.1	

Assay Class: High Sensitivity DNA Assay
 Data Path: C:\Documents and Settings\UC Davis\Desktop\2014-09-26_004.xad

Created: 9/26/2014 1:11:33 PM
 Modified: 9/26/2014 2:01:17 PM

Electropherogram Summary Continued ...



Overall Results for sample 4 : sample 4

Number of peaks found: 30 Corr. Area 1: 2,901.6
 Noise: 0.9 Corr. Area 2: 2,336.4

Peak table for sample 4 : sample 4

Peak	Size [bp]	Conc. [pg/μl]	Molarity [pmol/l]	Observations
1	35	125.00	5,411.3	Lower Marker
2	194	6.86	53.6	
3	260	536.50	3,126.7	
4	269	150.11	844.3	
5	278	119.37	650.0	
6	290	173.56	906.5	
7	303	123.86	619.7	
8	312	144.25	700.8	
9	323	152.08	712.8	
10	339	84.40	377.0	
11	349	257.36	1,116.1	
12	379	83.06	332.1	
13	389	53.24	207.6	
14	399	80.61	306.3	
15	424	39.70	141.9	
16	437	98.36	341.3	
17	462	51.79	169.7	
18	534	29.95	85.0	
19	546	26.73	74.2	
20	568	32.77	87.4	
21	664	46.58	106.3	
22	700	23.15	50.2	
23	746	34.37	69.8	
24	822	18.49	34.1	
25	879	48.96	84.4	
26	1,035	60.82	89.1	

Assay Class: High Sensitivity DNA Assay
 Data Path: C:\Documents and Settings\UC Davis\Desktop\2014-09-26_004.xad



Created: 9/26/2014 1:11:33 PM
 Modified: 9/26/2014 2:01:17 PM

Electropherogram Summary Continued ...

... Peak table for sample 4 : sample 4

Peak	Size [bp]	Conc. [pg/μl]	Molarity [pmol/l]	Observations
27	1,494	8.99	9.1	
28	1,610	16.92	15.9	
29	2,036	10.64	7.9	
30	2,499	6.97	4.2	
31	10,380	75.00	10.9	Upper Marker
32	11,972	0.00	0.0	

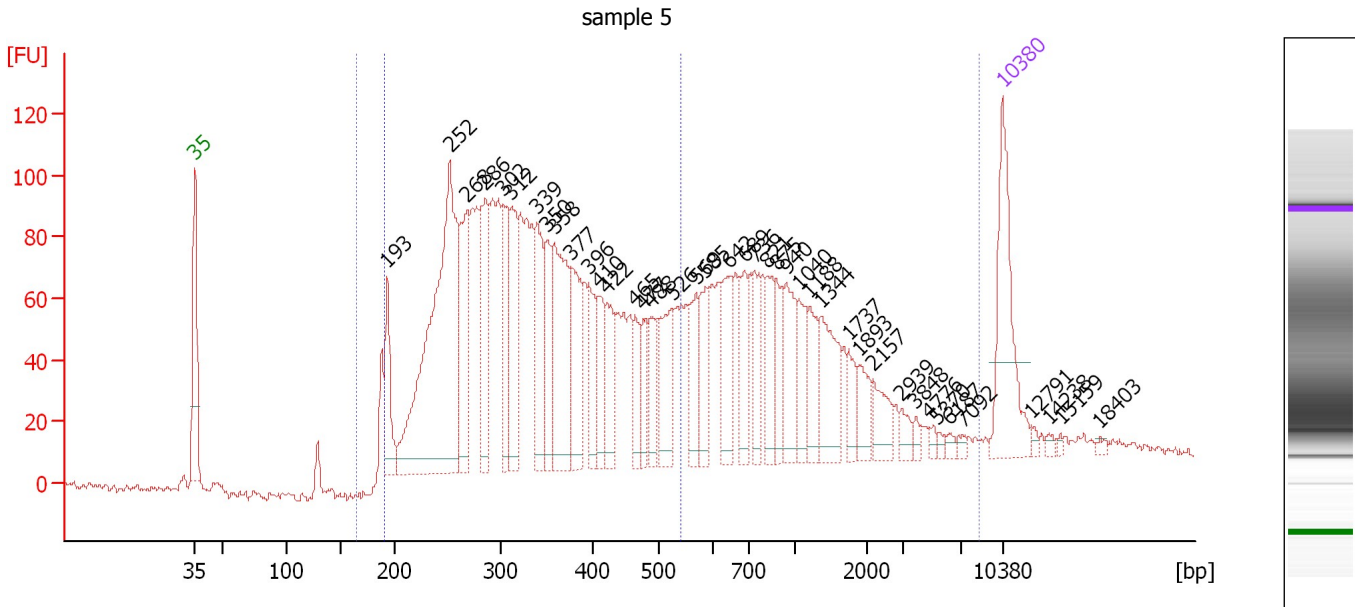
Region table for sample 4 : sample 4

From [bp]	Average Size [bp]	To [bp]	Corr. Area	% of Total	Size distribution in CV [%]	Conc. [pg/μl]	Molarity [pmol/l]	Color
165	494	8,500	2,901.5	100	80.8	3,000.35	13,068.4	
190	340	540	2,336.4	80	24.0	2,513.13	12,110.8	

Assay Class: High Sensitivity DNA Assay
 Data Path: C:\Documents and Settings\UC Davis\Desktop\2014-09-26_004.xad

Created: 9/26/2014 1:11:33 PM
 Modified: 9/26/2014 2:01:17 PM

Electropherogram Summary Continued ...



Overall Results for sample 5 : sample 5

Number of peaks found: 41 Corr. Area 1: 3,280.8
 Noise: 1.4 Corr. Area 2: 2,225.1

Peak table for sample 5 : sample 5

Peak	Size [bp]	Conc. [pg/μl]	Molarity [pmol/l]	Observations
1	35	125.00	5,411.3	Lower Marker
2	193	56.84	445.3	
3	252	366.89	2,204.5	
4	268	97.11	548.5	
5	286	92.50	490.2	
6	302	68.14	341.6	
7	312	74.95	364.5	
8	339	72.11	322.0	
9	350	52.40	226.6	
10	358	117.50	497.5	
11	377	66.17	266.0	
12	396	39.40	150.7	
13	410	37.25	137.7	
14	422	41.93	150.5	
15	465	26.85	87.6	
16	477	26.34	83.7	
17	488	26.56	82.4	
18	526	57.69	166.3	
19	569	38.79	103.3	
20	585	39.71	102.8	
21	642	41.77	98.6	
22	689	35.94	79.1	
23	736	39.44	81.2	
24	821	34.81	64.2	
25	875	30.55	52.9	
26	940	42.22	68.1	

Assay Class: High Sensitivity DNA Assay
 Data Path: C:\Documents and Settings\UC Davis\Desktop\2014-09-26_004.xad



Created: 9/26/2014 1:11:33 PM
 Modified: 9/26/2014 2:01:17 PM

Electropherogram Summary Continued ...

... Peak table for sample 5 : sample 5

Peak	Size [bp]	Conc. [pg/μl]	Molarity [pmol/l]	Observations
27	1,040	31.25	45.6	
28	1,188	28.54	36.4	
29	1,344	52.01	58.6	
30	1,737	15.95	13.9	
31	1,893	20.95	16.8	
32	2,157	21.97	15.4	
33	2,939	8.64	4.5	
34	3,848	4.59	1.8	
35	4,776	4.18	1.3	
36	5,370	2.60	0.7	
37	6,187	4.00	1.0	
38	7,092	3.25	0.7	
39	10,380	75.00	10.9	Upper Marker
40	12,791	0.00	0.0	
41	14,238	0.00	0.0	
42	15,159	0.00	0.0	
43	18,403	0.00	0.0	

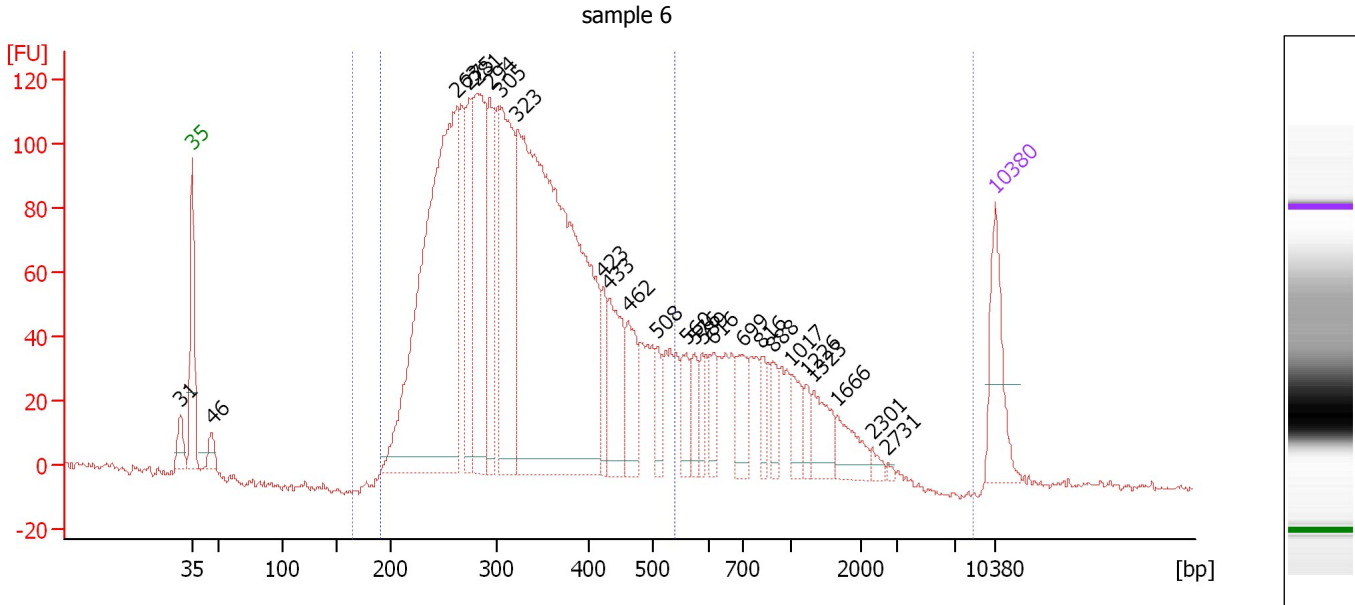
Region table for sample 5 : sample 5

From [bp]	Average Size [bp]	To [bp]	Corr. Area	% of Total	Size distribution in CV [%]	Conc. [pg/μl]	Molarity [pmol/l]	Color
165	694	8,500	3,280.8	99	100.0	2,483.78	10,104.9	
190	342	540	2,225.1	67	25.2	1,804.18	8,762.7	

Assay Class: High Sensitivity DNA Assay
 Data Path: C:\Documents and Settings\UC Davis\Desktop\2014-09-26_004.xad

Created: 9/26/2014 1:11:33 PM
 Modified: 9/26/2014 2:01:17 PM

Electropherogram Summary Continued ...



Overall Results for sample 6 : sample 6

Number of peaks found:	25	Corr. Area 1:	3,390.5
Noise:	0.7	Corr. Area 2:	2,766.9

Peak table for sample 6 : sample 6

Peak	Size [bp]	Conc. [pg/μl]	Molarity [pmol/l]	Observations
1	31	0.00	0.0	
2	35	125.00	5,411.3	Lower Marker
3	46	26.72	883.5	
4	263	844.33	4,872.7	
5	275	139.20	767.9	
6	281	277.35	1,494.1	
7	294	142.01	732.1	
8	305	293.41	1,456.6	
9	323	1,105.72	5,182.9	
10	423	50.21	179.8	
11	433	113.27	396.5	
12	462	77.24	253.6	
13	508	32.07	95.7	
14	560	41.50	112.3	
15	576	34.10	89.8	
16	589	27.36	70.4	
17	616	33.64	82.7	
18	699	50.55	109.6	
19	816	26.85	49.8	
20	888	28.35	48.4	
21	1,017	32.89	49.0	
22	1,226	19.05	23.5	
23	1,323	46.49	53.2	
24	1,666	38.34	34.9	
25	2,301	8.25	5.4	
26	2,731	2.89	1.6	

Assay Class: High Sensitivity DNA Assay
 Data Path: C:\Documents and Settings\UC Davis\Desktop\2014-09-26_004.xad



Created: 9/26/2014 1:11:33 PM
 Modified: 9/26/2014 2:01:17 PM

Electropherogram Summary Continued ...

... Peak table for sample 6 : sample 6

Peak	Size [bp]	Conc. [pg/μl]	Molarity [pmol/l]	Observations
27	10,380	75.00	10.9	Upper Marker

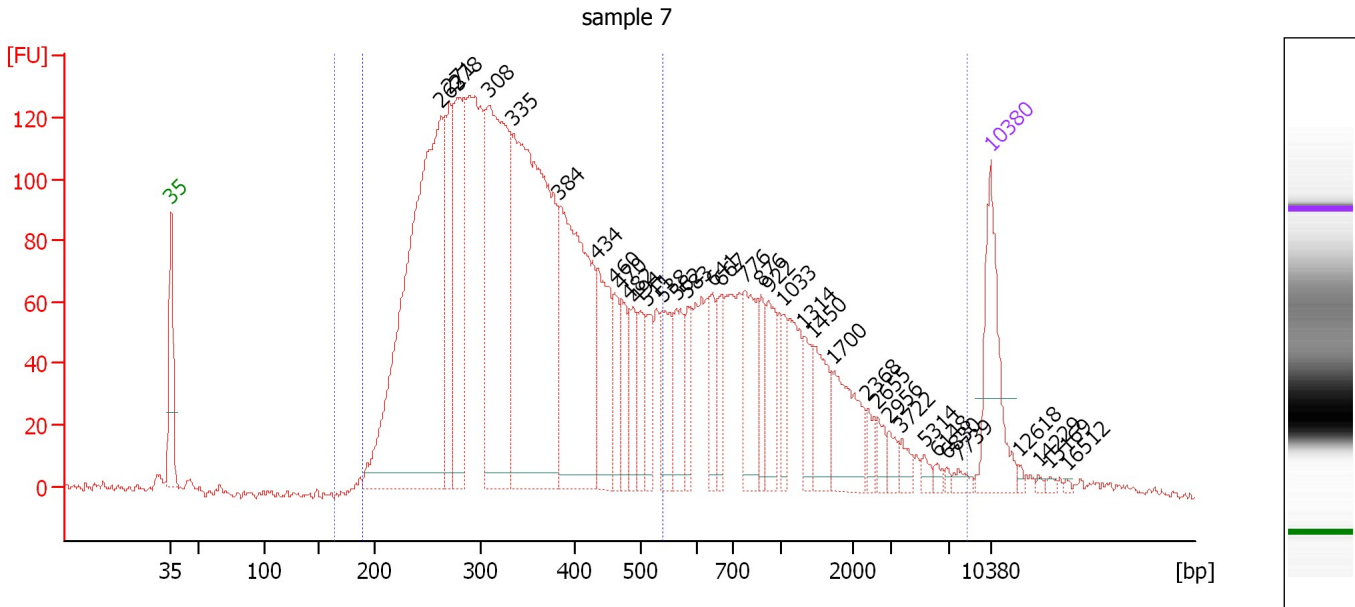
Region table for sample 6 : sample 6

From [bp]	Average Size [bp]	To [bp]	Corr. Area	% of Total	Size distribution in CV [%]	Conc. [pg/μl]	Molarity [pmol/l]	Color
165	482	8,500	3,390.5	98	78.2	4,017.48	17,867.1	
190	333	540	2,766.9	80	23.7	3,408.16	16,706.3	

Assay Class: High Sensitivity DNA Assay
 Data Path: C:\Documents and Settings\UC Davis\Desktop\2014-09-26_004.xad

Created: 9/26/2014 1:11:33 PM
 Modified: 9/26/2014 2:01:17 PM

Electropherogram Summary Continued ...



Overall Results for sample 7 : sample 7

Number of peaks found: 36 Corr. Area 1: 4,219.3
 Noise: 1.6 Corr. Area 2: 3,095.6

Peak table for sample 7 : sample 7

Peak	Size [bp]	Conc. [pg/μl]	Molarity [pmol/l]	Observations
1	35	125.00	5,411.3	Lower Marker
2	263	646.77	3,728.4	
3	271	117.09	655.7	
4	278	176.77	964.3	
5	308	364.86	1,794.5	
6	335	512.73	2,321.4	
7	384	288.63	1,139.7	
8	434	98.45	343.3	
9	460	38.91	128.1	
10	470	42.76	137.8	
11	482	41.22	129.6	
12	494	42.80	131.1	
13	511	36.15	107.2	
14	538	58.09	163.7	
15	562	51.35	138.4	
16	583	31.31	81.4	
17	641	32.79	77.5	
18	667	32.98	74.9	
19	776	68.23	133.3	
20	876	29.32	50.7	
21	922	46.57	76.6	
22	1,033	26.86	39.4	
23	1,314	24.85	28.7	
24	1,450	44.45	46.4	
25	1,700	60.08	53.5	
26	2,368	10.40	6.7	

Assay Class: High Sensitivity DNA Assay
 Data Path: C:\Documents and Settings\UC Davis\Desktop\2014-09-26_004.xad



Created: 9/26/2014 1:11:33 PM
 Modified: 9/26/2014 2:01:17 PM

Electropherogram Summary Continued ...

... Peak table for sample 7 : sample 7

Peak	Size [bp]	Conc. [pg/μl]	Molarity [pmol/l]	Observations
27	2,655	10.06	5.7	
28	2,956	9.89	5.1	
29	3,722	10.16	4.1	
30	5,314	5.49	1.6	
31	6,148	4.26	1.0	
32	6,830	2.50	0.6	
33	7,739	6.23	1.2	
34	10,380	75.00	10.9	Upper Marker
35	12,618	0.00	0.0	
36	14,229	0.00	0.0	
37	15,169	0.00	0.0	
38	16,512	0.00	0.0	

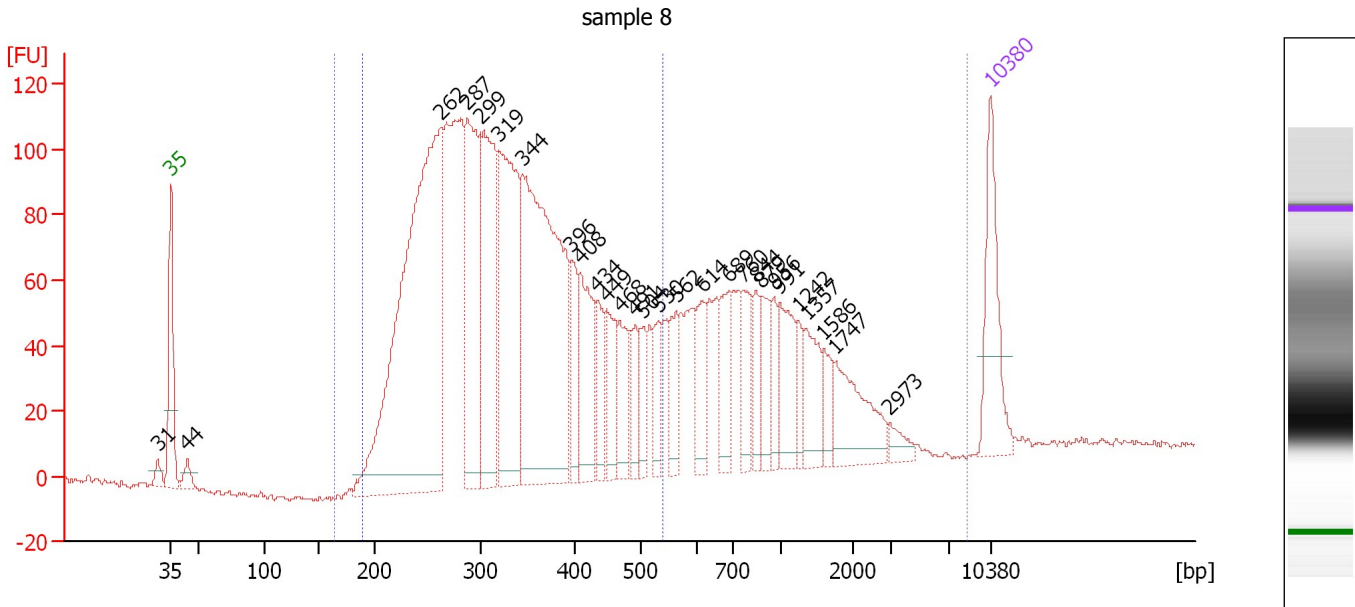
Region table for sample 7 : sample 7

From [bp]	Average Size [bp]	To [bp]	Corr. Area	% of Total	Size distribution in CV [%]	Conc. [pg/μl]	Molarity [pmol/l]	Color
165	658	8,500	4,219.3	99	100.0	3,513.12	14,566.6	
190	340	540	3,095.6	73	24.1	2,734.66	13,193.2	

Assay Class: High Sensitivity DNA Assay
 Data Path: C:\Documents and Settings\UC Davis\Desktop\2014-09-26_004.xad

Created: 9/26/2014 1:11:33 PM
 Modified: 9/26/2014 2:01:17 PM

Electropherogram Summary Continued ...



Overall Results for sample 8 : sample 8

Number of peaks found: 28 Corr. Area 1: 3,225.1
 Noise: 0.7 Corr. Area 2: 2,423.0

Peak table for sample 8 : sample 8

Peak	Size [bp]	Conc. [pg/μl]	Molarity [pmol/l]	Observations
1	31	0.00	0.0	
2	35	125.00	5,411.3	Lower Marker
3	44	19.44	670.2	
4	262	714.39	4,126.8	
5	287	220.09	1,163.2	
6	299	236.12	1,196.0	
7	319	263.89	1,254.6	
8	344	470.93	2,075.6	
9	396	53.31	204.1	
10	408	99.81	370.4	
11	434	50.01	174.5	
12	449	54.29	183.4	
13	468	48.01	155.4	
14	491	31.59	97.6	
15	504	33.45	100.6	
16	530	37.66	107.7	
17	562	44.30	119.3	
18	614	44.88	110.7	
19	689	52.36	115.1	
20	760	46.05	91.8	
21	844	31.85	57.2	
22	879	39.00	67.2	
23	956	26.36	41.8	
24	991	61.24	93.6	
25	1,242	21.01	25.6	
26	1,357	46.65	52.1	

Assay Class: High Sensitivity DNA Assay
 Data Path: C:\Documents and Settings\UC Davis\Desktop\2014-09-26_004.xad



Created: 9/26/2014 1:11:33 PM
 Modified: 9/26/2014 2:01:17 PM

Electropherogram Summary Continued ...

... Peak table for sample 8 : sample 8

Peak	Size [bp]	Conc. [pg/μl]	Molarity [pmol/l]	Observations
27	1,586	23.49	22.4	
28	1,747	69.99	60.7	
29	2,973	12.31	6.3	
30	10,380	75.00	10.9	Upper Marker

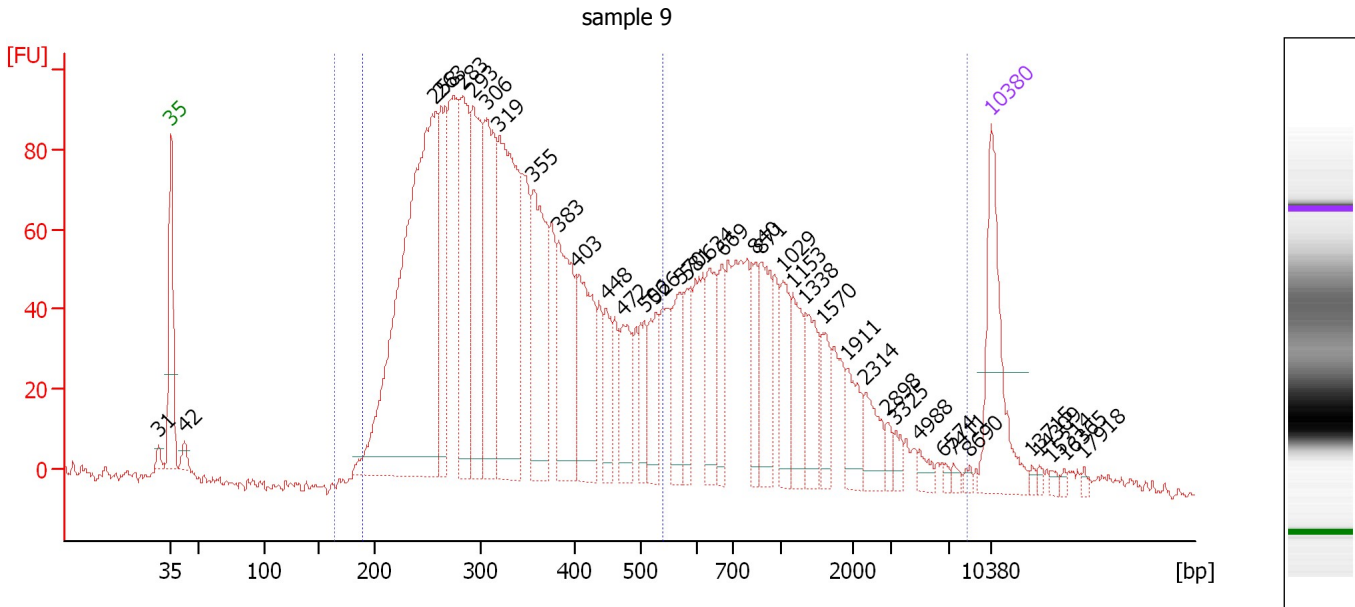
Region table for sample 8 : sample 8

From [bp]	Average Size [bp]	To [bp]	Corr. Area	% of Total	Size distribution in CV [%]	Conc. [pg/μl]	Molarity [pmol/l]	Color
165	554	8,500	3,225.1	99	87.0	3,065.45	13,085.1	
190	333	540	2,423.0	75	24.1	2,431.92	11,922.2	

Assay Class: High Sensitivity DNA Assay
 Data Path: C:\Documents and Settings\UC Davis\Desktop\2014-09-26_004.xad

Created: 9/26/2014 1:11:33 PM
 Modified: 9/26/2014 2:01:17 PM

Electropherogram Summary Continued ...



Overall Results for sample 9 : sample 9

Number of peaks found: 38 Corr. Area 1: 3,190.7
 Noise: 1.3 Corr. Area 2: 2,227.1

Peak table for sample 9 : sample 9

Peak	Size [bp]	Conc. [pg/μl]	Molarity [pmol/l]	Observations
1	31	0.00	0.0	
2	35	125.00	5,411.3	Lower Marker
3	42	12.18	434.5	
4	258	536.20	3,154.6	
5	263	93.04	536.4	
6	283	139.31	746.6	
7	293	131.77	682.2	
8	306	147.66	731.1	
9	319	231.99	1,102.9	
10	355	131.90	562.2	
11	383	111.23	440.5	
12	403	97.95	368.5	
13	448	34.42	116.5	
14	472	47.47	152.3	
15	506	34.85	104.4	
16	526	41.70	120.2	
17	570	47.95	127.5	
18	581	31.72	82.8	
19	634	45.74	109.3	
20	669	32.13	72.8	
21	840	30.34	54.7	
22	871	56.27	97.8	
23	1,029	36.49	53.7	
24	1,153	40.95	53.8	
25	1,338	40.41	45.8	
26	1,570	24.67	23.8	

Assay Class: High Sensitivity DNA Assay
 Data Path: C:\Documents and Settings\UC Davis\Desktop\2014-09-26_004.xad



Created: 9/26/2014 1:11:33 PM
 Modified: 9/26/2014 2:01:17 PM

Electropherogram Summary Continued ...

... Peak table for sample 9 : sample 9

Peak	Size [bp]	Conc. [pg/μl]	Molarity [pmol/l]	Observations
27	1,911	27.20	21.6	
28	2,314	25.21	16.5	
29	2,898	8.03	4.2	
30	3,325	7.57	3.4	
31	4,988	7.53	2.3	
32	6,574	2.82	0.6	
33	7,411	3.75	0.8	
34	8,690	3.07	0.5	
35	10,380	75.00	10.9	Upper Marker
36	13,715	0.00	0.0	
37	14,309	0.00	0.0	
38	15,314	0.00	0.0	
39	16,365	0.00	0.0	
40	17,918	0.00	0.0	

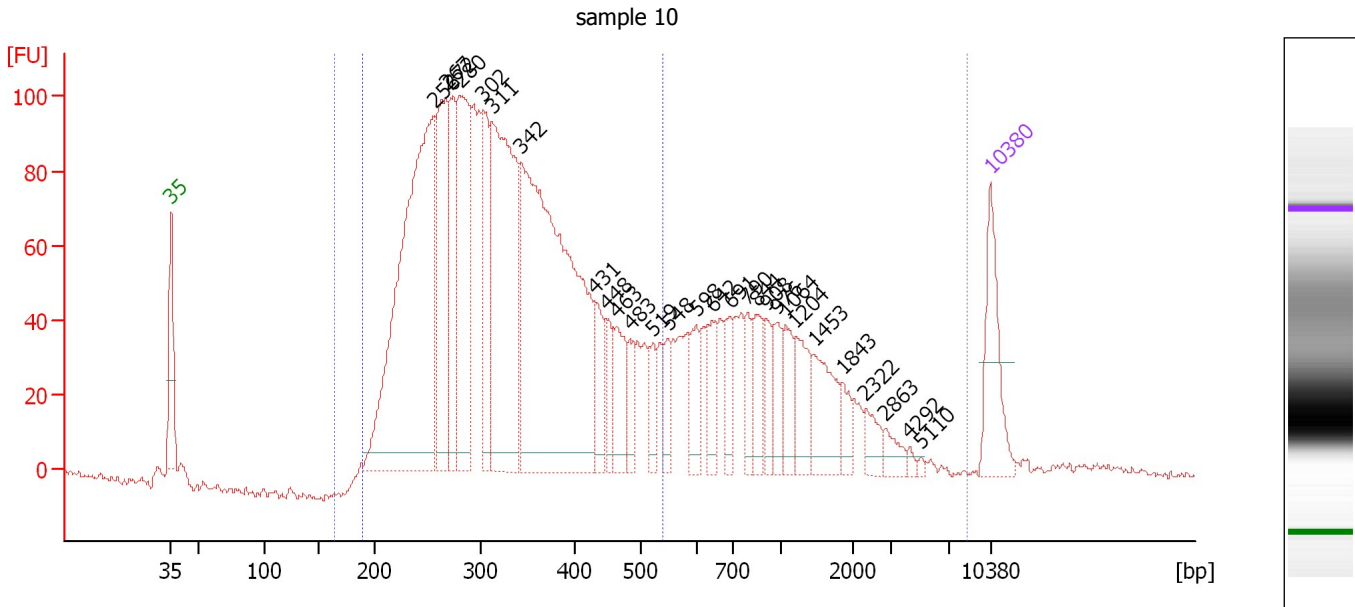
Region table for sample 9 : sample 9

From [bp]	Average Size [bp]	To [bp]	Corr. Area	% of Total	Size distribution in CV [%]	Conc. [pg/μl]	Molarity [pmol/l]	Color
165	692	8,500	3,190.7	98	100.0	2,956.10	12,235.6	
190	333	540	2,227.1	68	24.9	2,210.84	10,907.6	

Assay Class: High Sensitivity DNA Assay
 Data Path: C:\Documents and Settings\UC Davis\Desktop\2014-09-26_004.xad

Created: 9/26/2014 1:11:33 PM
 Modified: 9/26/2014 2:01:17 PM

Electropherogram Summary Continued ...



Overall Results for sample 10 : sample 10

Number of peaks found: 28 Corr. Area 1: 3,045.4
 Noise: 1.1 Corr. Area 2: 2,319.4

Peak table for sample 10 : sample 10

Peak	Size [bp]	Conc. [pg/μl]	Molarity [pmol/l]	Observations
1	35	125.00	5,411.3	Lower Marker
2	256	698.85	4,135.0	
3	267	233.65	1,325.1	
4	272	132.33	736.0	
5	280	259.06	1,400.0	
6	302	126.80	636.8	
7	311	418.94	2,038.3	
8	342	728.72	3,224.8	
9	431	64.77	227.7	
10	448	38.22	129.3	
11	463	64.85	212.0	
12	483	35.11	110.1	
13	519	30.24	88.2	
14	548	30.24	83.7	
15	598	42.32	107.2	
16	642	44.32	104.7	
17	691	38.38	84.2	
18	790	32.07	61.5	
19	844	47.62	85.5	
20	908	31.20	52.1	
21	976	31.43	48.8	
22	1,064	39.37	56.1	
23	1,204	52.03	65.5	
24	1,453	67.97	70.9	
25	1,843	20.17	16.6	
26	2,322	22.04	14.4	

Assay Class: High Sensitivity DNA Assay
 Data Path: C:\Documents and Settings\UC Davis\Desktop\2014-09-26_004.xad



Created: 9/26/2014 1:11:33 PM
 Modified: 9/26/2014 2:01:17 PM

Electropherogram Summary Continued ...

... Peak table for sample 10 : sample 10

Peak	Size [bp]	Conc. [pg/μl]	Molarity [pmol/l]	Observations
27	2,863	16.02	8.5	
28	4,292	4.55	1.6	
29	5,110	2.41	0.7	
30	10,380	75.00	10.9	Upper Marker

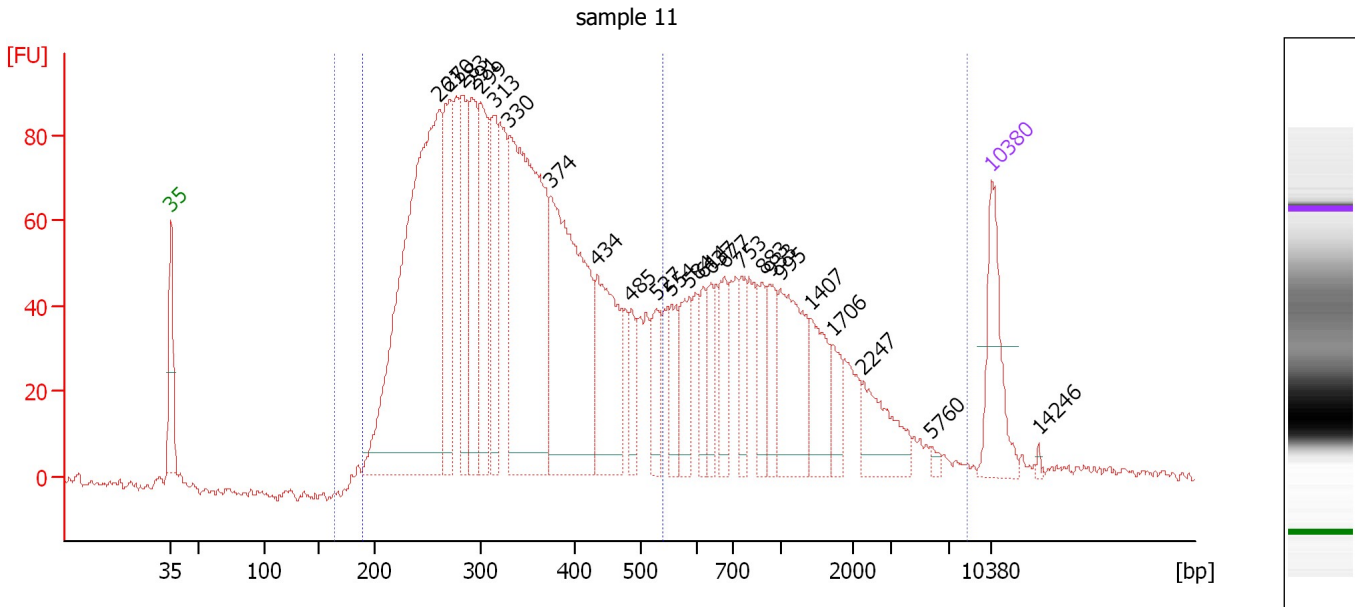
Region table for sample 10 : sample 10

From [bp]	Average Size [bp]	To [bp]	Corr. Area	% of Total	Size distribution in CV [%]	Conc. [pg/μl]	Molarity [pmol/l]	Color
165	589	8,500	3,045.4	99	100.0	3,875.48	16,809.9	
190	330	540	2,319.4	75	24.2	3,116.48	15,461.5	

Assay Class: High Sensitivity DNA Assay
 Data Path: C:\Documents and Settings\UC Davis\Desktop\2014-09-26_004.xad

Created: 9/26/2014 1:11:33 PM
 Modified: 9/26/2014 2:01:17 PM

Electropherogram Summary Continued ...



Overall Results for sample 11 : sample 11

Number of peaks found: 25 Corr. Area 1: 2,926.1
 Noise: 0.9 Corr. Area 2: 2,113.3

Peak table for sample 11 : sample 11

Peak	Size [bp]	Conc. [pg/μl]	Molarity [pmol/l]	Observations
1	35	125.00	5,411.3	Lower Marker
2	261	715.47	4,157.1	
3	270	167.36	937.8	
4	283	137.67	737.9	
5	291	151.62	788.8	
6	299	162.71	823.8	
7	313	120.93	584.9	
8	330	481.23	2,210.3	
9	374	363.66	1,472.6	
10	434	159.17	555.9	
11	485	36.69	114.6	
12	527	51.33	147.5	
13	554	45.71	125.1	
14	584	58.57	151.9	
15	614	36.04	88.9	
16	637	36.96	88.0	
17	677	52.61	117.8	
18	753	37.64	75.8	
19	883	38.86	66.7	
20	933	47.41	77.0	
21	995	118.79	180.9	
22	1,407	61.50	66.2	
23	1,706	29.27	26.0	
24	2,247	60.41	40.7	
25	5,760	5.23	1.4	
26	10,380	75.00	10.9	Upper Marker



Assay Class: High Sensitivity DNA Assay
Data Path: C:\Documents and Settings\UC Davis\Desktop\2014-09-26_004.xad

Created: 9/26/2014 1:11:33 PM
Modified: 9/26/2014 2:01:17 PM

Electropherogram Summary Continued ...**... Peak table for sample 11 : sample 11**

Peak	Size [bp]	Conc. [pg/μl]	Molarity [pmol/l]	Observations
27	14,246	0.00	0.0	

Region table for sample 11 : sample 11

From [bp]	Average Size [bp]	To [bp]	Corr. Area	% of Total	Size distribution in CV [%]	Conc. [pg/μl]	Molarity [pmol/l]	Color
165	670	8,500	2,926.1	99	100.0	3,836.32	15,973.7	
190	336	540	2,113.3	72	24.5	2,952.13	14,430.6	

Assay Class: High Sensitivity DNA Assay
Data Path: C:\Documents and Settings\UC Davis\Desktop\2014-09-26_004.xad

Created: 9/26/2014 1:11:33 PM
Modified: 9/26/2014 2:01:17 PM

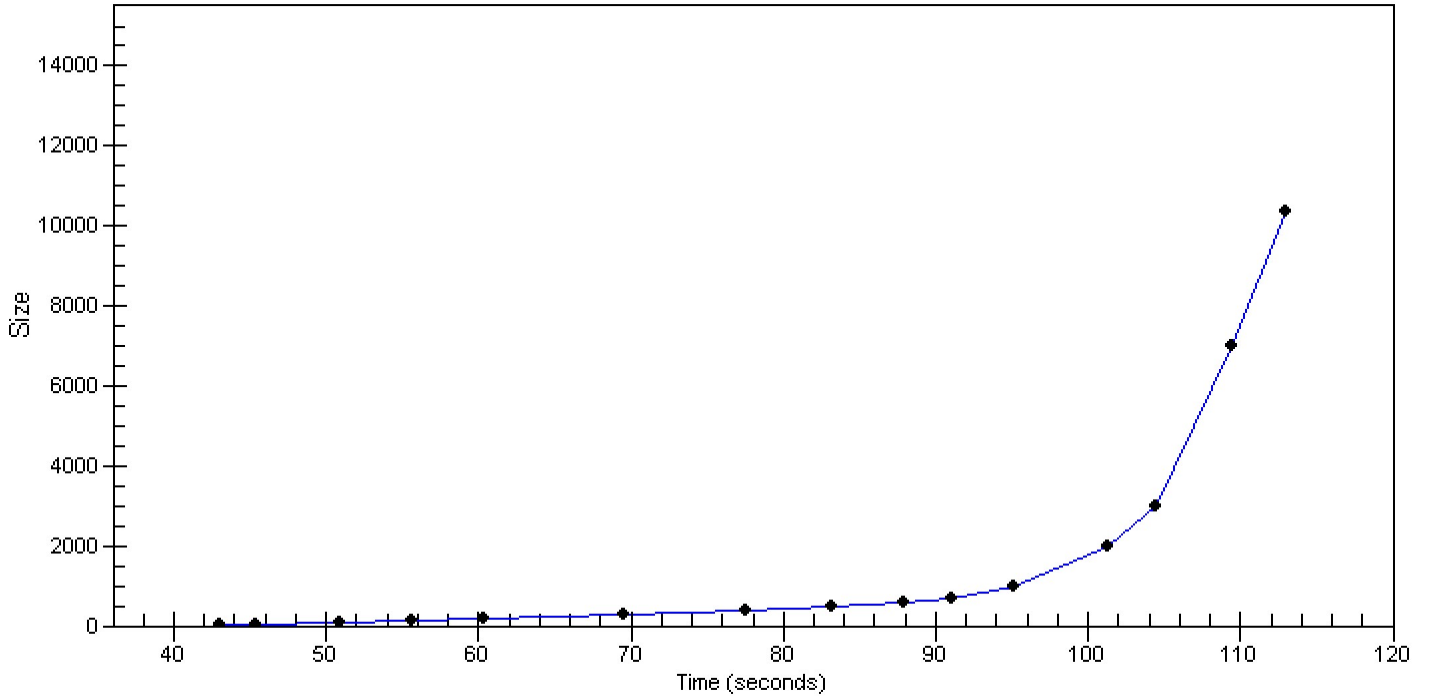
Gel Image

Assay Class: High Sensitivity DNA Assay
Data Path: C:\Documents and Settings\UC Davis\Desktop\2014-09-26_004.xad

Created: 9/26/2014 1:11:33 PM
Modified: 9/26/2014 2:01:17 PM

Curves

Standard Curve



Assay Class: High Sensitivity DNA Assay
 Data Path: C:\Documents and Settings\UC Davis\Desktop\2014-09-26_004.xad

Created: 9/26/2014 1:11:33 PM
 Modified: 9/26/2014 2:01:17 PM

Run Logbook

Description	Number	Source	Category	Sub Category	Time	Time Zone	User	Host
Run ended on port 1 (Number of wells acquired: 12)		Instrument	Run		9/26/2014 1:52:00 PM	(GMT --07:00) Pacific Standard Time	UC Davis	D8XSMGH1
Run started on port 1 (File: C:\Documents and Settings\Bioanalyser\2014-09-26\2014-09-26_004.xad)		Instrument	Run		9/26/2014 1:11:39 PM	(GMT --07:00) Pacific Standard Time	UC Davis	D8XSMGH1
Product Number : G2938B		Instrument	Run		9/26/2014 1:11:39 PM	(GMT --07:00) Pacific Standard Time	UC Davis	D8XSMGH1
Name :		Instrument	Run		9/26/2014 1:11:39 PM	(GMT --07:00) Pacific Standard Time	UC Davis	D8XSMGH1
Vendor : Agilent Technologies		Instrument	Run		9/26/2014 1:11:39 PM	(GMT --07:00) Pacific Standard Time	UC Davis	D8XSMGH1
Serial# : DE13701086		Instrument	Run		9/26/2014 1:11:39 PM	(GMT --07:00) Pacific Standard Time	UC Davis	D8XSMGH1
Firmware : C.01.069		Instrument	Run		9/26/2014 1:11:39 PM	(GMT --07:00) Pacific Standard Time	UC Davis	D8XSMGH1
Cartridge : Electrode		Instrument	Run		9/26/2014 1:11:39 PM	(GMT --07:00) Pacific Standard Time	UC Davis	D8XSMGH1