

Assay Class: High Sensitivity DNA Assay
Data Path: C:\Documents and Settings\UC Davis\Desktop\2014-09-26_005.xad

Created: 9/26/2014 1:54:14 PM
Modified: 9/26/2014 2:40:35 PM

Electrophoresis File Run Summary

Instrument Information:

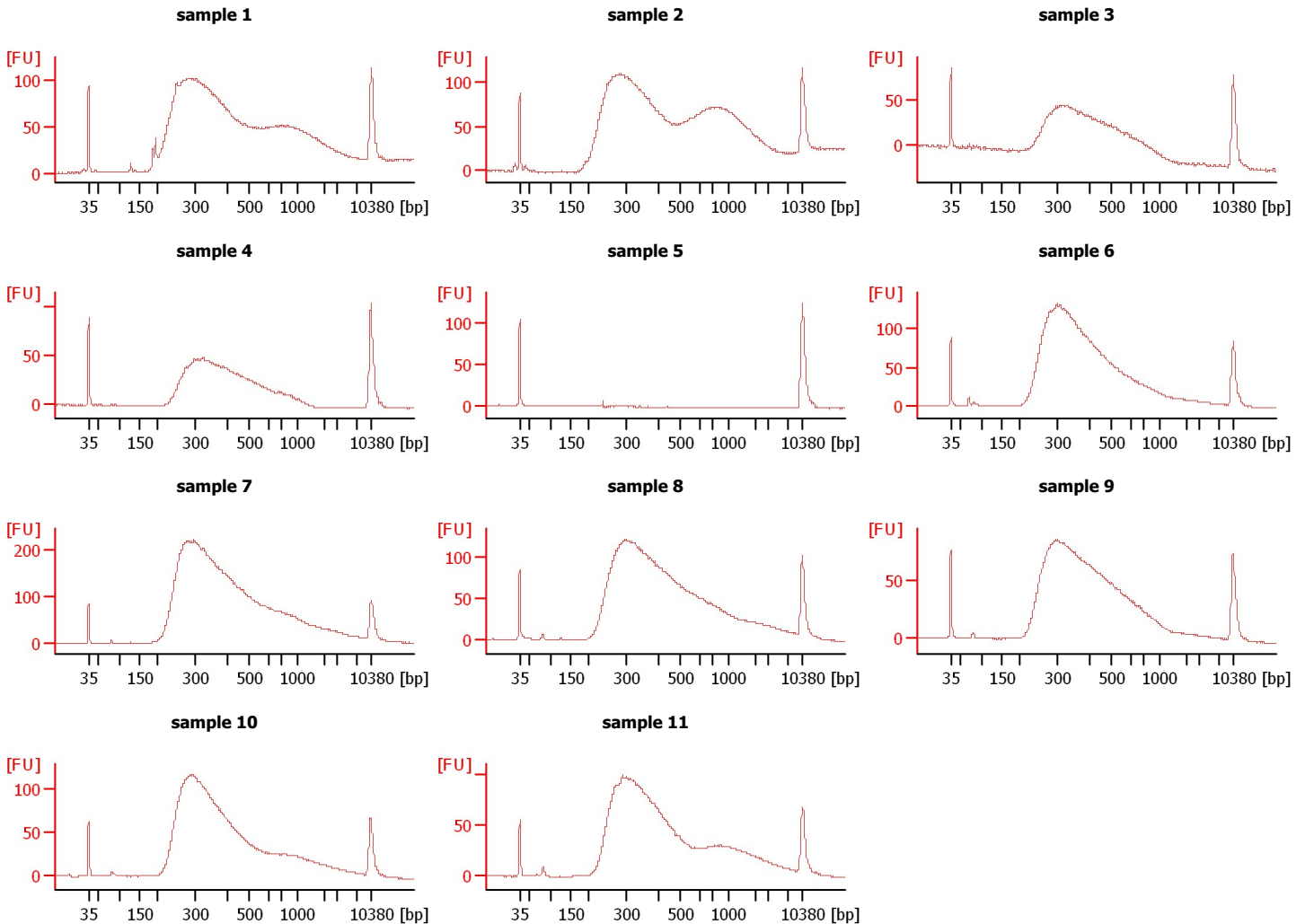
Instrument Name: DE13701086 Firmware: C.01.069
Serial#: DE13701086 Type: G2938B

Assay Information:

Assay Origin Path: C:\Program Files\Agilent\2100 bioanalyzer\2100 expert\assays\dsDNA\High Sensitivity DNA.xsy
Assay Class: High Sensitivity DNA Assay
Version: 1.03
Assay Comments: Copyright © 2003-2010 Agilent Technologies

Chip Information:

Chip Lot #:
Reagent Kit Lot #:
Chip Comments:



Assay Class: High Sensitivity DNA Assay
 Data Path: C:\Documents and Settings\UC Davis\Desktop\2014-09-26_005.xad

Created: 9/26/2014 1:54:14 PM
 Modified: 9/26/2014 2:40:35 PM

Electrophoresis File Run Summary (Chip Summary)

Sample Name	Sample Comment	Rest. Digest	Status	Observation	Result Label	Result Color
sample 1		<input type="checkbox"/>	✓			
sample 2		<input type="checkbox"/>	✓			
sample 3		<input type="checkbox"/>	✓			
sample 4		<input type="checkbox"/>	✓			
sample 5		<input type="checkbox"/>	✓			
sample 6		<input type="checkbox"/>	✓			
sample 7		<input type="checkbox"/>	✓			
sample 8		<input type="checkbox"/>	✓			
sample 9		<input type="checkbox"/>	✓			
sample 10		<input type="checkbox"/>	✓			
sample 11		<input type="checkbox"/>	✓			
Ladder		<input type="checkbox"/>	✓			

Chip Lot #

Reagent Kit Lot #

Chip Comments :

Assay Class: High Sensitivity DNA Assay
Data Path: C:\Documents and Settings\UC Davis\Desktop\2014-09-26_005.xad

Created: 9/26/2014 1:54:14 PM
Modified: 9/26/2014 2:40:35 PM

Electrophoresis Assay Details

General Analysis Settings

Number of Available Sample and Ladder Wells (Max.) : 12
Minimum Visible Range [s] : 32
Maximum Visible Range [s] : 138
Start Analysis Time Range [s] : 33
End Analysis Time Range [s] : 137.5
Ladder Concentration [pg/μl] : 1950
Uses Standard Area for Ladder Fragments
Lower Marker Concentration [pg/μl] : 125
Upper Marker Concentration [pg/μl] : 75
Used Upper Marker for Quantitation
Standard Curve Fit is Point to Point
Show Data Aligned to Lower and Upper Marker

Integrator Settings

Integration Start Time [s] : 33.05
Integration End Time [s] : 137
Slope Threshold : 0.8
Height Threshold [FU] : 5
Area Threshold : 0.1
Width Threshold [s] : 0.6
Baseline Plateau [s] : 0.5

Filter Settings

Filter Width [s] : 0.5
Polynomial Order : 4

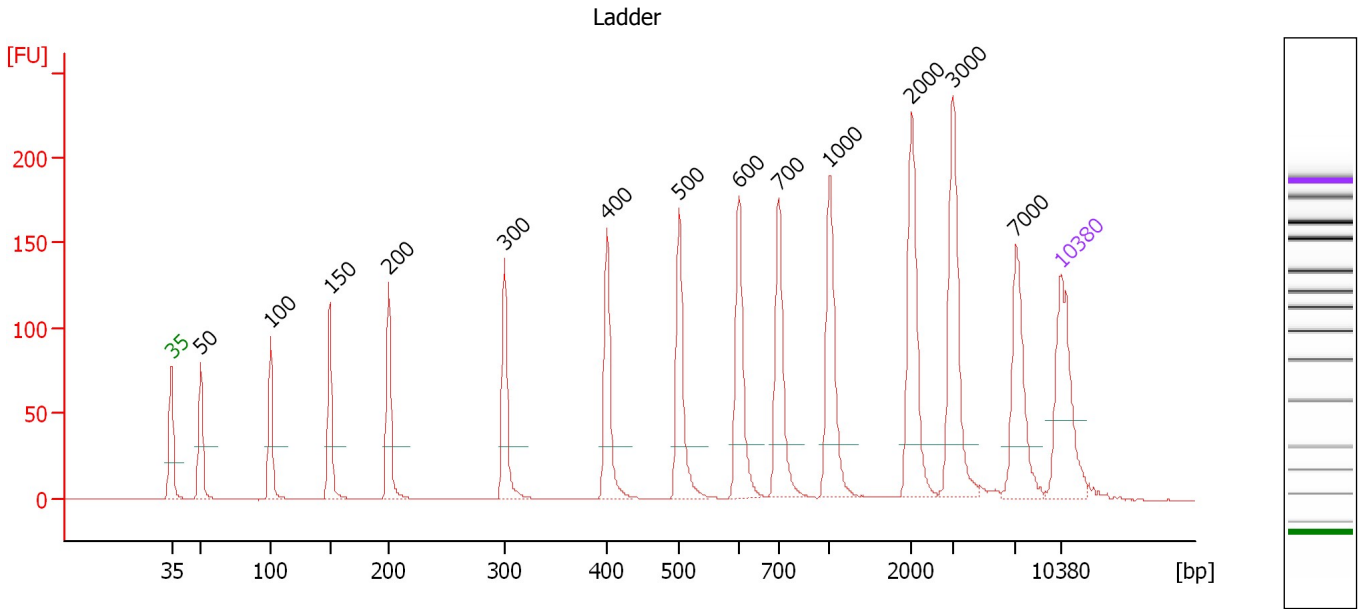
Ladder

Ladder Peak	Size	Area
1	35	160
2	50	210
3	100	208
4	150	221
5	200	242
6	300	270
7	400	305
8	500	306
9	600	336
10	700	321
11	1000	366
12	2000	413
13	3000	411
14	7000	400
15	10380	214

Assay Class: High Sensitivity DNA Assay
 Data Path: C:\Documents and Settings\UC Davis\Desktop\2014-09-26_005.xad

Created: 9/26/2014 1:54:14 PM
 Modified: 9/26/2014 2:40:35 PM

Electropherogram Summary



Overall Results for Ladder

Noise: 0.1

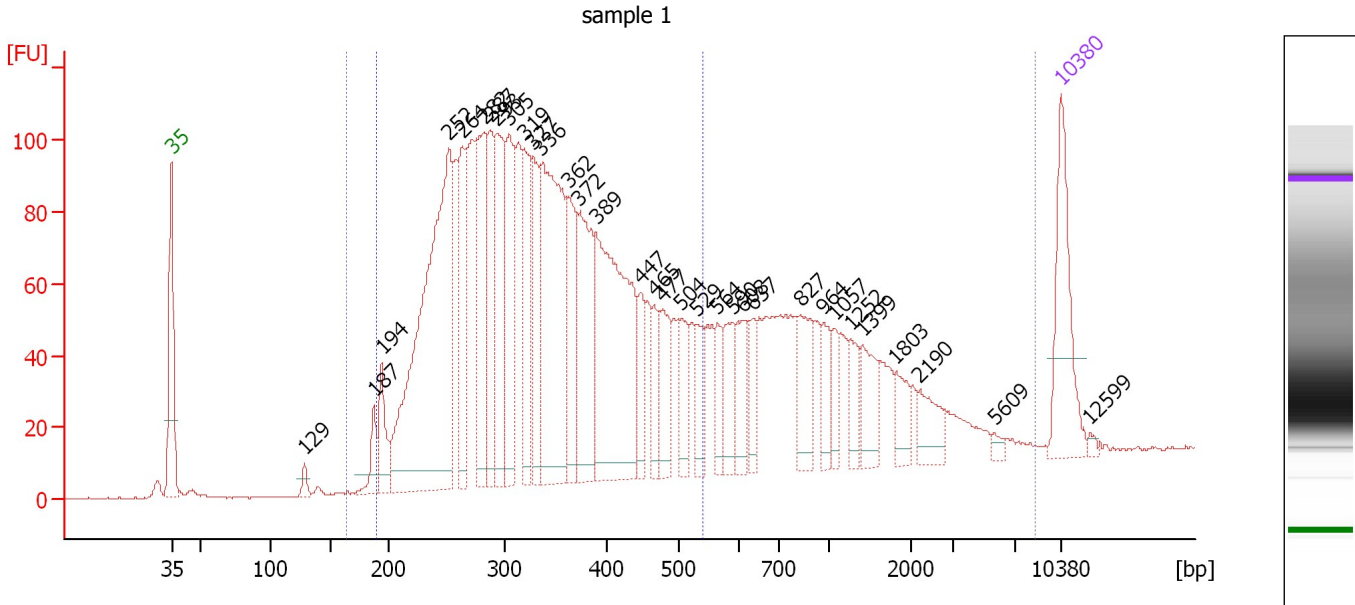
Peak table for Ladder

Peak	Size [bp]	Conc. [pg/μl]	Molarity [pmol/l]	Observations
1	35	125.00	5,411.3	Lower Marker
2	50	150.00	4,545.5	Ladder Peak
3	100	150.00	2,272.7	Ladder Peak
4	150	150.00	1,515.2	Ladder Peak
5	200	150.00	1,136.4	Ladder Peak
6	300	150.00	757.6	Ladder Peak
7	400	150.00	568.2	Ladder Peak
8	500	150.00	454.5	Ladder Peak
9	600	150.00	378.8	Ladder Peak
10	700	150.00	324.7	Ladder Peak
11	1,000	150.00	227.3	Ladder Peak
12	2,000	150.00	113.6	Ladder Peak
13	3,000	150.00	75.8	Ladder Peak
14	7,000	150.00	32.5	Ladder Peak
15	10,380	75.00	10.9	Upper Marker

Assay Class: High Sensitivity DNA Assay
 Data Path: C:\Documents and Settings\UC Davis\Desktop\2014-09-26_005.xad

Created: 9/26/2014 1:54:14 PM
 Modified: 9/26/2014 2:40:35 PM

Electropherogram Summary Continued ...



Overall Results for sample 1 : sample 1

Number of peaks found: 33 Corr. Area 1: 3,203.9
 Noise: 0.2 Corr. Area 2: 2,415.5

Peak table for sample 1 : sample 1

Peak	Size [bp]	Conc. [pg/μl]	Molarity [pmol/l]	Observations
1	35	125.00	5,411.3	Lower Marker
2	129	10.16	119.8	
3	187	28.17	228.1	
4	194	45.17	353.0	
5	252	468.19	2,817.7	
6	264	103.09	592.4	
7	282	139.62	750.1	
8	287	102.18	538.5	
9	293	127.94	661.8	
10	305	109.30	543.2	
11	319	88.81	421.3	
12	327	84.74	392.4	
13	336	256.78	1,159.3	
14	362	91.38	382.0	
15	372	126.14	513.1	
16	389	261.74	1,018.8	
17	447	38.95	131.9	
18	465	33.24	108.3	
19	477	51.17	162.6	
20	504	43.09	129.6	
21	529	33.64	96.4	
22	564	25.74	69.1	
23	590	42.27	108.5	
24	608	34.60	86.2	
25	637	27.25	64.8	
26	827	50.36	92.3	

Assay Class: High Sensitivity DNA Assay
 Data Path: C:\Documents and Settings\UC Davis\Desktop\2014-09-26_005.xad



Created: 9/26/2014 1:54:14 PM
 Modified: 9/26/2014 2:40:35 PM

Electropherogram Summary Continued ...

... Peak table for sample 1 : sample 1

Peak	Size [bp]	Conc. [pg/μl]	Molarity [pmol/l]	Observations
27	964	28.13	44.2	
28	1,057	19.05	27.3	
29	1,252	24.30	29.4	
30	1,399	37.19	40.3	
31	1,803	22.31	18.8	
32	2,190	26.47	18.3	
33	5,609	5.06	1.4	
34	10,380	75.00	10.9	Upper Marker
35	12,599	0.00	0.0	

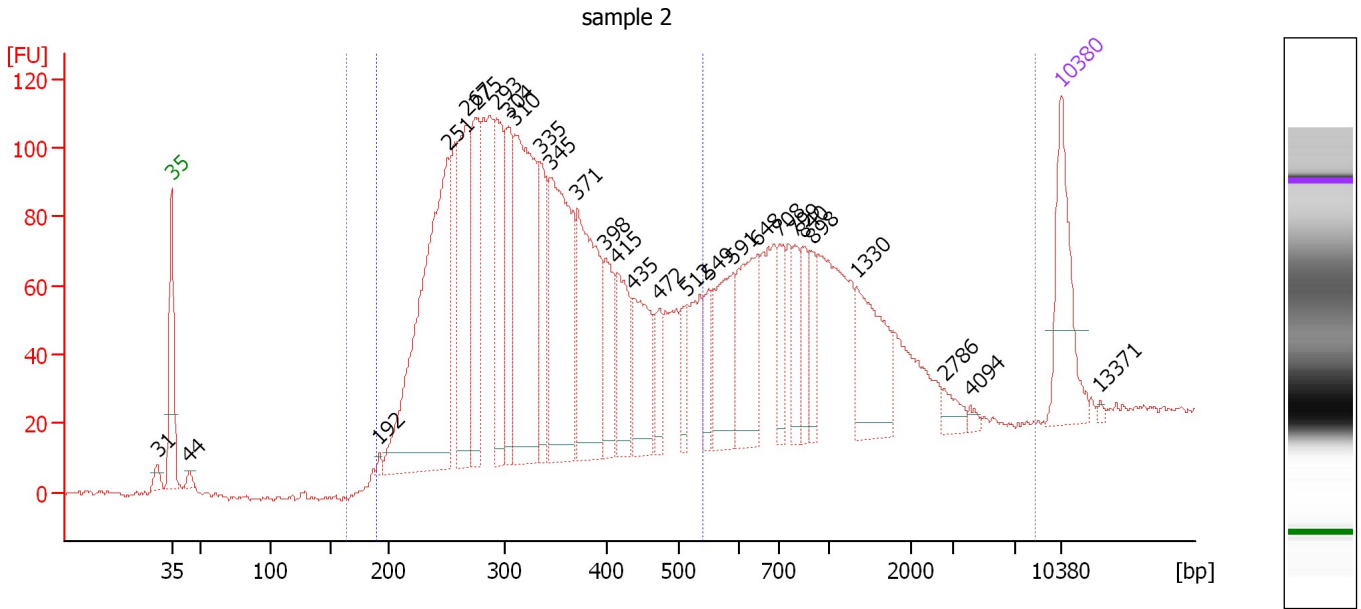
Region table for sample 1 : sample 1

From [bp]	Average Size [bp]	To [bp]	Corr. Area	% of Total	Size distribution in CV [%]	Conc. [pg/μl]	Molarity [pmol/l]	Color
165	631	8,500	3,203.9	99	100.0	3,152.38	13,465.4	
190	337	540	2,415.5	75	24.3	2,507.19	12,218.9	

Assay Class: High Sensitivity DNA Assay
 Data Path: C:\Documents and Settings\UC Davis\Desktop\2014-09-26_005.xad

Created: 9/26/2014 1:54:14 PM
 Modified: 9/26/2014 2:40:35 PM

Electropherogram Summary Continued ...



Overall Results for sample 2 : sample 2

Number of peaks found: 28 Corr. Area 1: 3,247.6
 Noise: 0.8 Corr. Area 2: 2,326.2

Peak table for sample 2 : sample 2

Peak	Size [bp]	Conc. [pg/μl]	Molarity [pmol/l]	Observations
1	31	0.00	0.0	
2	35	125.00	5,411.3	Lower Marker
3	44	7.81	267.8	
4	192	5.35	42.2	
5	251	427.17	2,579.6	
6	267	164.57	934.1	
7	275	128.06	704.3	
8	293	121.34	627.4	
9	304	95.15	474.2	
10	310	271.04	1,323.8	
11	335	77.39	350.5	
12	345	209.69	920.2	
13	371	183.30	748.1	
14	398	59.53	226.4	
15	415	69.14	252.7	
16	435	87.85	305.7	
17	472	32.79	105.2	
18	512	27.95	82.7	
19	549	28.69	79.2	
20	591	85.86	220.2	
21	648	100.90	236.0	
22	708	38.97	83.4	
23	799	36.43	69.0	
24	840	32.86	59.3	
25	898	28.75	48.5	
26	1,330	85.17	97.0	

Assay Class: High Sensitivity DNA Assay
 Data Path: C:\Documents and Settings\UC Davis\Desktop\2014-09-26_005.xad



Created: 9/26/2014 1:54:14 PM
 Modified: 9/26/2014 2:40:35 PM

Electropherogram Summary Continued ...

... Peak table for sample 2 : sample 2

Peak	Size [bp]	Conc. [pg/μl]	Molarity [pmol/l]	Observations
27	2,786	13.15	7.2	
28	4,094	3.97	1.5	
29	10,380	75.00	10.9	Upper Marker
30	13,371	0.00	0.0	

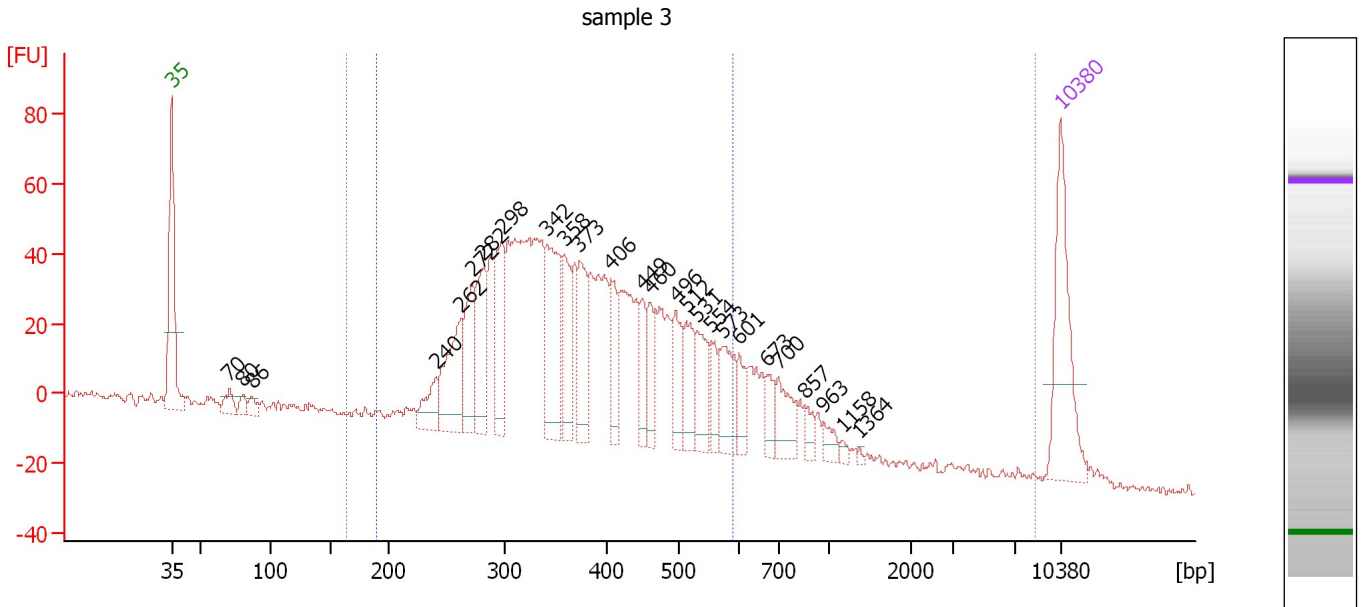
Region table for sample 2 : sample 2

From [bp]	Average Size [bp]	To [bp]	Corr. Area	% of Total	Size distribution in CV [%]	Conc. [pg/μl]	Molarity [pmol/l]	Color
165	600	8,500	3,247.6	99	94.6	3,101.45	12,852.0	
190	336	540	2,326.2	71	24.1	2,364.80	11,519.0	

Assay Class: High Sensitivity DNA Assay
 Data Path: C:\Documents and Settings\UC Davis\Desktop\2014-09-26_005.xad

Created: 9/26/2014 1:54:14 PM
 Modified: 9/26/2014 2:40:35 PM

Electropherogram Summary Continued ...



Overall Results for sample 3 : sample 3

Number of peaks found: 26 Corr. Area 1: 1,563.7
 Noise: 1.0 Corr. Area 2: 1,368.6

Peak table for sample 3 : sample 3

Peak	Size [bp]	Conc. [pg/μl]	Molarity [pmol/l]	Observations
1	35	125.00	5,411.3	Lower Marker
2	70	15.07	324.1	
3	80	9.54	180.5	
4	86	9.87	173.2	
5	240	28.88	182.0	
6	262	73.19	423.7	
7	272	56.67	315.3	
8	282	65.90	354.1	
9	298	71.07	361.8	
10	342	92.06	408.1	
11	358	53.06	224.4	
12	373	55.70	226.1	
13	406	32.67	122.0	
14	449	28.39	95.7	
15	460	27.65	91.1	
16	496	34.40	105.2	
17	512	37.34	110.4	
18	531	35.33	100.8	
19	554	18.73	51.2	
20	573	40.22	106.4	
21	601	19.75	49.8	
22	673	17.18	38.7	
23	700	31.12	67.4	
24	857	10.29	18.2	
25	963	10.15	16.0	
26	1,158	3.47	4.5	

Assay Class: High Sensitivity DNA Assay
 Data Path: C:\Documents and Settings\UC Davis\Desktop\2014-09-26_005.xad



Created: 9/26/2014 1:54:14 PM
 Modified: 9/26/2014 2:40:35 PM

Electropherogram Summary Continued ...

... Peak table for sample 3 : sample 3

Peak	Size [bp]	Conc. [pg/ μ l]	Molarity [pmol/l]	Observations
27	1,364	1.59	1.8	
28	10,380	75.00	10.9	Upper Marker

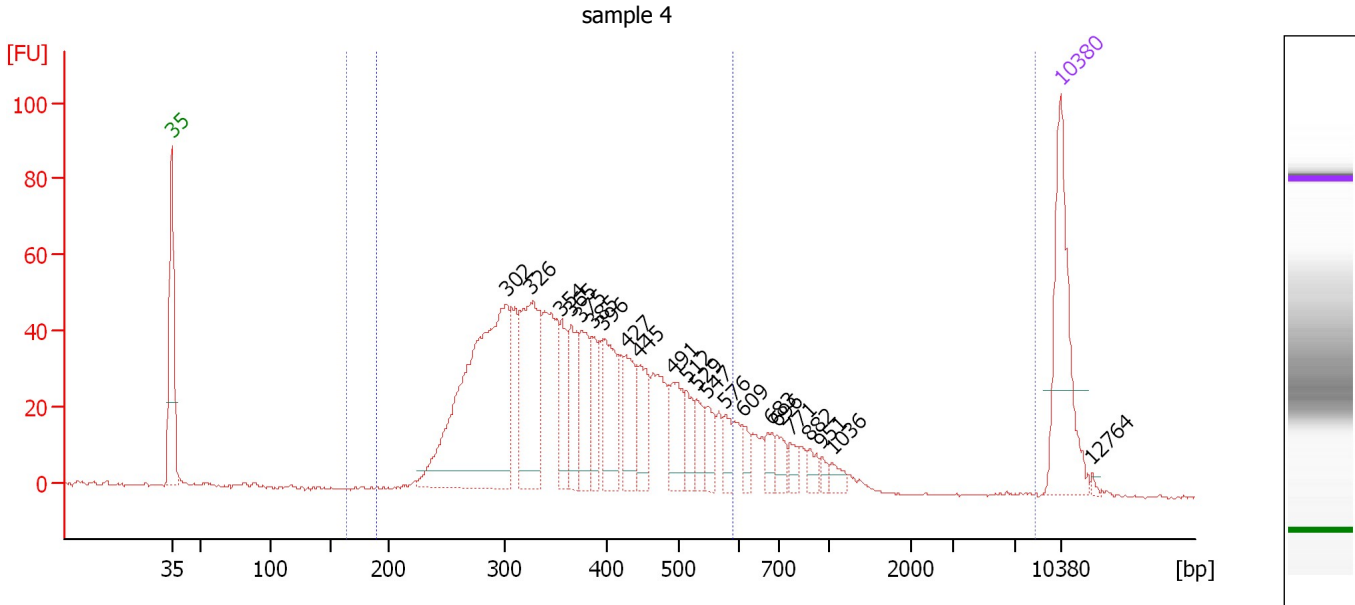
Region table for sample 3 : sample 3

From [bp]	Average Size [bp]	To [bp]	Corr. Area	% of Total	Size distribution in CV [%]	Conc. [pg/ μ l]	Molarity [pmol/l]	Color
165	456	8,500	1,563.7	96	79.8	1,474.67	6,060.0	
190	381	590	1,368.6	84	24.0	1,313.70	5,679.4	

Assay Class: High Sensitivity DNA Assay
 Data Path: C:\Documents and Settings\UC Davis\Desktop\2014-09-26_005.xad

Created: 9/26/2014 1:54:14 PM
 Modified: 9/26/2014 2:40:35 PM

Electropherogram Summary Continued ...



Overall Results for sample 4 : sample 4

Number of peaks found: 22 Corr. Area 1: 1,268.3
 Noise: 0.2 Corr. Area 2: 1,131.1

Peak table for sample 4 : sample 4



Peak	Size [bp]	Conc. [pg/μl]	Molarity [pmol/l]	Observations
1	35	125.00	5,411.3	Lower Marker
2	302	292.30	1,468.2	
3	326	112.92	525.0	
4	354	36.07	154.3	
5	365	44.03	182.7	
6	375	42.21	170.5	
7	385	28.83	113.3	
8	396	55.62	212.6	
9	427	39.94	141.8	
10	445	35.06	119.4	
11	491	33.53	103.5	
12	512	17.17	50.8	
13	529	18.93	54.2	
14	547	16.99	47.1	
15	576	14.60	38.4	
16	609	10.78	26.8	
17	683	11.85	26.3	
18	696	11.74	25.5	
19	771	9.45	18.6	
20	882	8.62	14.8	
21	951	4.86	7.7	
22	1,036	7.47	10.9	
23	10,380	75.00	10.9	Upper Marker
24	12,764	0.00	0.0	

Assay Class: High Sensitivity DNA Assay
Data Path: C:\Documents and Settings\UC Davis\Desktop\2014-09-26_005.xad

Created: 9/26/2014 1:54:14 PM
Modified: 9/26/2014 2:40:35 PM

Electropherogram Summary Continued ...

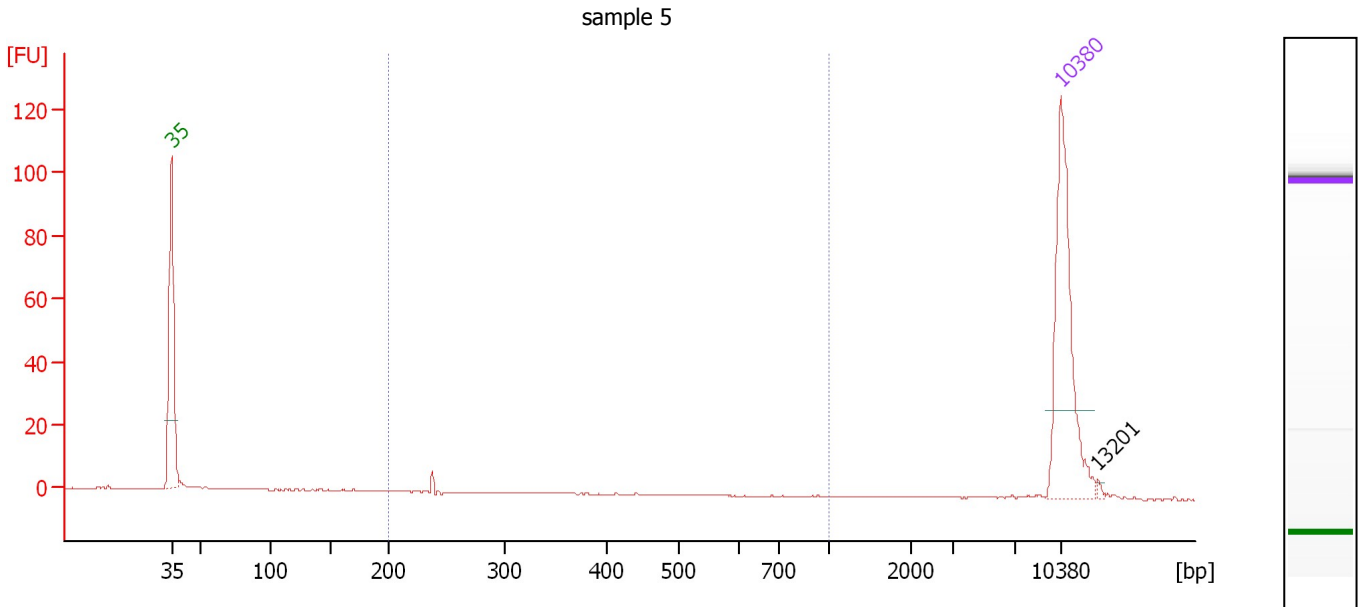
... Region table for sample 4 : sample 4

From [bp]	Average Size [bp]	To [bp]	Corr. Area	% of Total	Size distribution in CV [%]	Conc. [pg/ μ l]	Molarity [pmol/l]	Color
165	443	8,500	1,268.3	98	75.1	1,155.87	4,763.8	
190	377	590	1,131.1	88	23.3	1,048.55	4,546.9	

Assay Class: High Sensitivity DNA Assay
 Data Path: C:\Documents and Settings\UC Davis\Desktop\2014-09-26_005.xad

Created: 9/26/2014 1:54:14 PM
 Modified: 9/26/2014 2:40:35 PM

Electropherogram Summary Continued ...



Overall Results for sample 5 : sample 5

Number of peaks found: 1 Corr. Area 1: 3.5
 Noise: 0.1

Peak table for sample 5 : sample 5

Peak	Size [bp]	Conc. [pg/μl]	Molarity [pmol/l]	Observations
1	35	125.00	5,411.3	Lower Marker
2	10,380	75.00	10.9	Upper Marker
3	13,201	0.00	0.0	

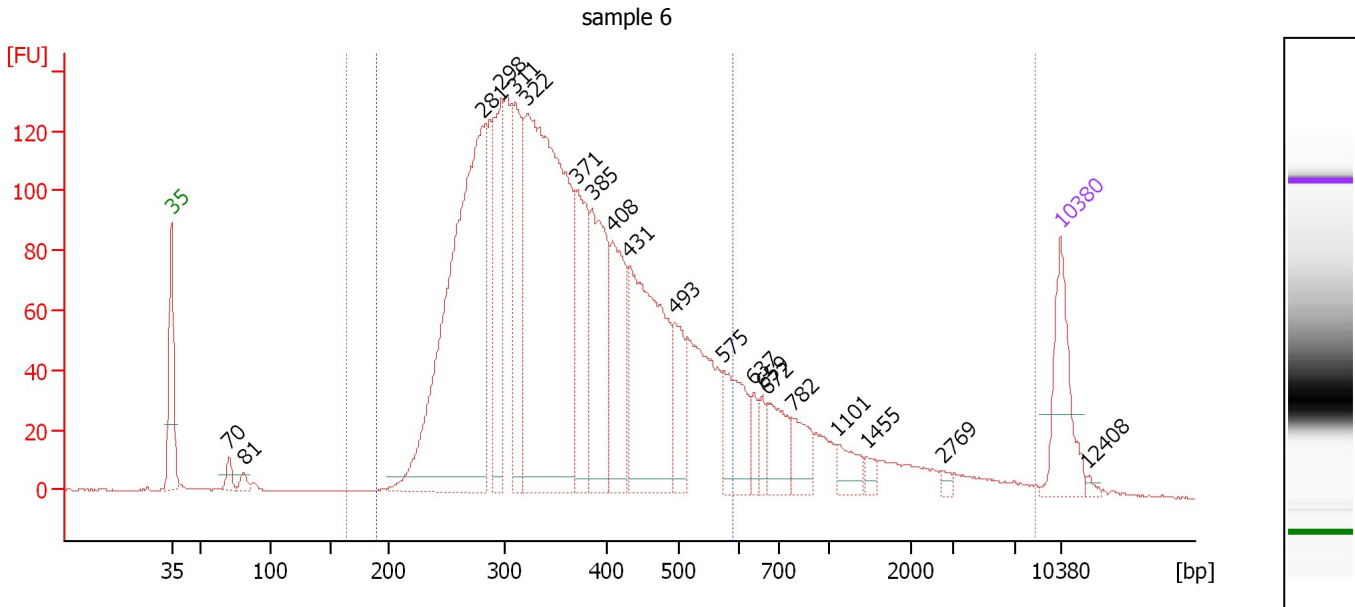
Region table for sample 5 : sample 5

From [bp]	Average Size [bp]	To [bp]	Corr. Area	% of Total	Size distribution in CV [%]	Conc. [pg/μl]	Molarity [pmol/l]	Color
200	267	1,000	3.5	13	39.3	2.83	17.6	Blue

Assay Class: High Sensitivity DNA Assay
 Data Path: C:\Documents and Settings\UC Davis\Desktop\2014-09-26_005.xad

Created: 9/26/2014 1:54:14 PM
 Modified: 9/26/2014 2:40:35 PM

Electropherogram Summary Continued ...



Overall Results for sample 6 : sample 6

Number of peaks found: 20 Corr. Area 1: 3,322.7
 Noise: 0.2 Corr. Area 2: 2,919.4

Peak table for sample 6 : sample 6

Peak	Size [bp]	Conc. [pg/μl]	Molarity [pmol/l]	Observations
1	35	125.00	5,411.3	Lower Marker
2	70	17.05	367.6	
3	81	11.17	209.6	
4	281	685.55	3,693.1	
5	298	167.21	851.5	
6	311	171.66	836.7	
7	322	703.64	3,310.0	
8	371	151.92	621.1	
9	385	185.60	729.6	
10	408	140.82	523.1	
11	431	285.51	1,002.7	
12	493	71.48	219.7	
13	575	88.81	234.1	
14	637	20.62	49.0	
15	659	19.86	45.7	
16	672	54.92	123.7	
17	782	39.40	76.3	
18	1,101	26.38	36.3	
19	1,455	8.79	9.2	
20	2,769	4.99	2.7	
21	10,380	75.00	10.9	Upper Marker
22	12,408	0.00	0.0	

Region table for sample 6 : sample 6

From [bp]	Average Size [bp]	To [bp]	Corr. Area	% of Total	Size distribution in CV [%]	Conc. [pg/μl]	Molarity [pmol/l]	Color
165	538	8,500	3,322.7	98	100.0	3,364.18	14,285.0	Blue

Assay Class: High Sensitivity DNA Assay
Data Path: C:\Documents and Settings\UC Davis\Desktop\2014-09-26_005.xad

Created: 9/26/2014 1:54:14 PM
Modified: 9/26/2014 2:40:35 PM

Electropherogram Summary Continued ...

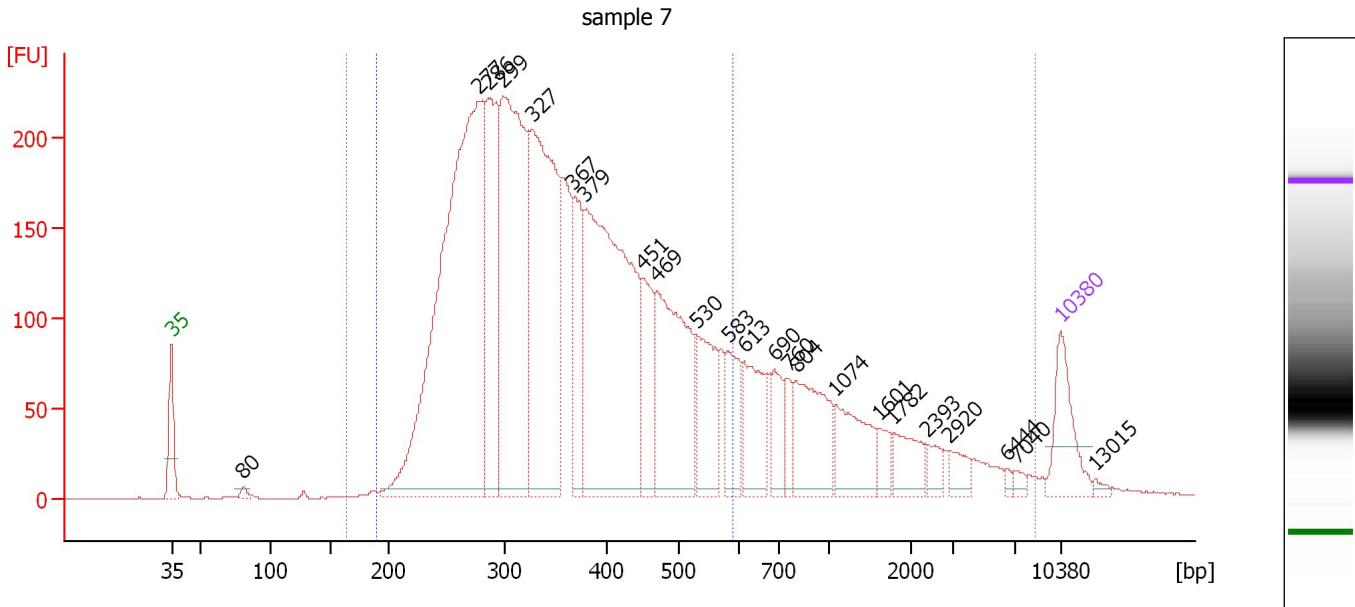
... Region table for sample 6 : sample 6

From [bp]	Average Size [bp]	To [bp]	Corr. Area	% of Total	Size distribution in CV [%]	Conc. [pg/ μ l]	Molarity [pmol/l]	Color
190	362	590	2,919.4	86	24.1	3,030.42	13,711.8	■

Assay Class: High Sensitivity DNA Assay
 Data Path: C:\Documents and Settings\UC Davis\Desktop\2014-09-26_005.xad

Created: 9/26/2014 1:54:14 PM
 Modified: 9/26/2014 2:40:35 PM

Electropherogram Summary Continued ...



Overall Results for sample 7 : sample 7

Number of peaks found: 23 Corr. Area 1: 6,276.1
 Noise: 0.1 Corr. Area 2: 5,201.7

Peak table for sample 7 : sample 7



Peak	Size [bp]	Conc. [pg/μl]	Molarity [pmol/l]	Observations
1	35	125.00	5,411.3	Lower Marker
2	80	9.39	176.8	
3	277	1,176.04	6,427.4	
4	286	331.82	1,759.0	
5	299	626.06	3,170.1	
6	327	594.52	2,755.3	
7	367	160.12	661.4	
8	379	696.94	2,787.1	
9	451	125.60	422.2	
10	469	312.64	1,010.5	
11	530	137.54	393.4	
12	583	84.02	218.5	
13	613	111.68	276.1	
14	690	60.56	133.0	
15	760	35.81	71.4	
16	804	145.80	274.9	
17	1,074	100.21	141.3	
18	1,601	24.70	23.4	
19	1,782	50.64	43.1	
20	2,393	21.15	13.4	
21	2,920	24.08	12.5	
22	6,444	5.23	1.2	
23	7,040	8.46	1.8	
24	10,380	75.00	10.9	Upper Marker
25	13,015	0.00	0.0	

Assay Class: High Sensitivity DNA Assay
Data Path: C:\Documents and Settings\UC Davis\Desktop\2014-09-26_005.xad

Created: 9/26/2014 1:54:14 PM
Modified: 9/26/2014 2:40:35 PM

Electropherogram Summary Continued ...

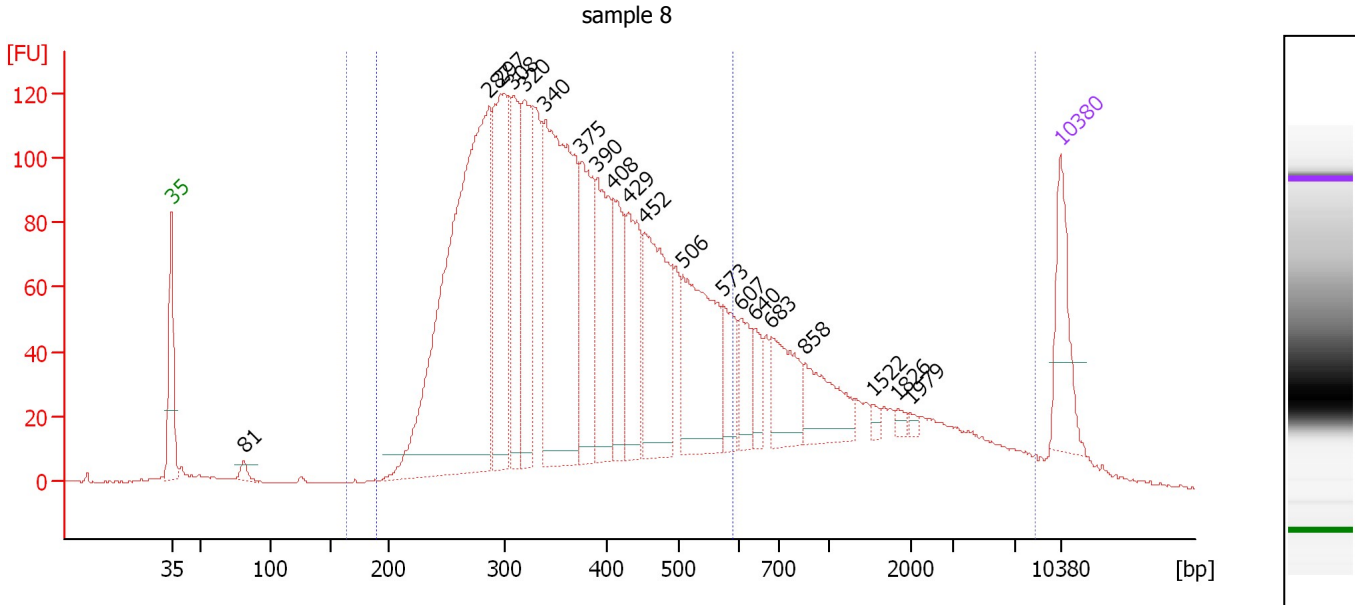
... Region table for sample 7 : sample 7

From [bp]	Average Size [bp]	To [bp]	Corr. Area	% of Total	Size distribution in CV [%]	Conc. [pg/ μ l]	Molarity [pmol/l]	Color
165	636	8,500	6,276.1	99	100.0	5,197.67	21,779.9	
190	359	590	5,201.7	82	25.3	4,473.08	20,592.6	

Assay Class: High Sensitivity DNA Assay
 Data Path: C:\Documents and Settings\UC Davis\Desktop\2014-09-26_005.xad

Created: 9/26/2014 1:54:14 PM
 Modified: 9/26/2014 2:40:35 PM

Electropherogram Summary Continued ...



Overall Results for sample 8 : sample 8

Number of peaks found: 20 Corr. Area 1: 3,691.3
 Noise: 0.2 Corr. Area 2: 2,965.5

Peak table for sample 8 : sample 8

Peak	Size [bp]	Conc. [pg/μl]	Molarity [pmol/l]	Observations
1	35	125.00	5,411.3	Lower Marker
2	81	14.08	264.5	
3	287	844.71	4,460.6	
4	297	293.69	1,497.1	
5	308	142.37	700.6	
6	320	175.59	832.6	
7	340	478.53	2,134.4	
8	375	158.14	638.7	
9	390	179.05	695.9	
10	408	112.57	417.9	
11	429	134.73	475.8	
12	452	209.02	699.9	
13	506	218.33	654.3	
14	573	64.10	169.5	
15	607	49.86	124.5	
16	640	37.62	89.1	
17	683	90.22	200.2	
18	858	80.54	142.1	
19	1,522	7.22	7.2	
20	1,826	6.45	5.3	
21	1,979	4.66	3.6	
22	10,380	75.00	10.9	Upper Marker

Region table for sample 8 : sample 8

From [bp]	Average Size [bp]	To [bp]	Corr. Area	% of Total	Size distribution in CV [%]	Conc. [pg/μl]	Molarity [pmol/l]	Color
165	713	8,500	3,691.3	97	100.0	4,249.85	17,033.5	Blue

Assay Class: High Sensitivity DNA Assay
Data Path: C:\Documents and Settings\UC Davis\Desktop\2014-09-26_005.xad

Created: 9/26/2014 1:54:14 PM
Modified: 9/26/2014 2:40:35 PM

Electropherogram Summary Continued ...

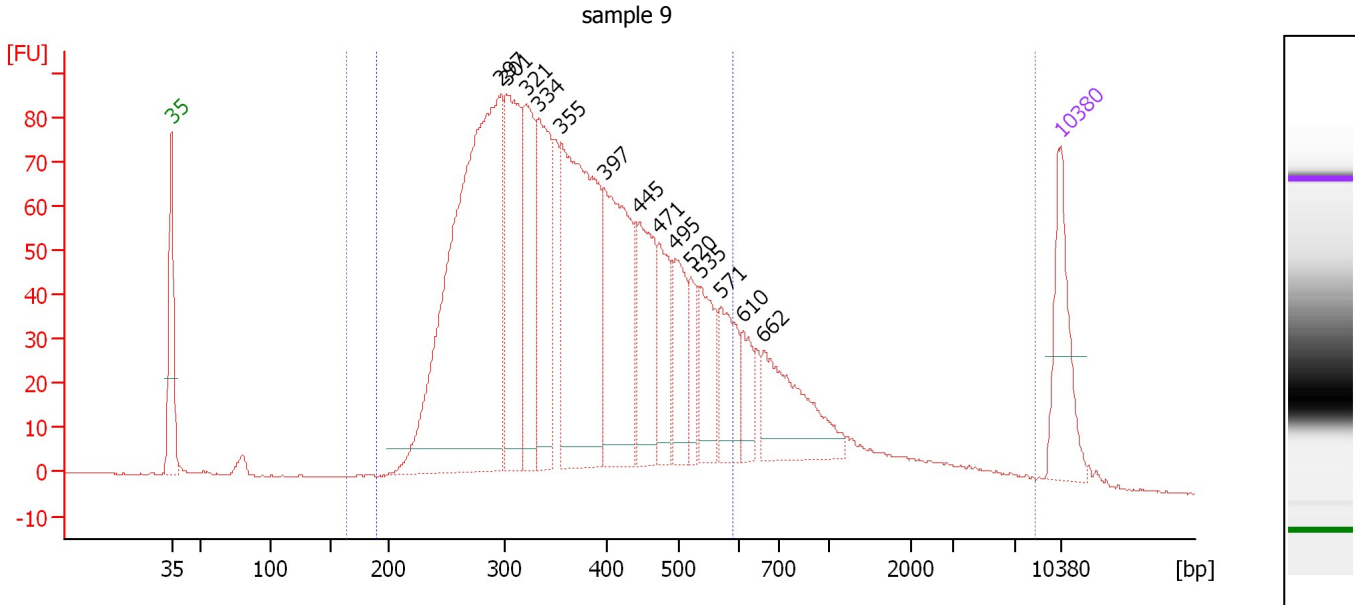
... Region table for sample 8 : sample 8

From [bp]	Average Size [bp]	To [bp]	Corr. Area	% of Total	Size distribution in CV [%]	Conc. [pg/ μ l]	Molarity [pmol/l]	Color
190	369	590	2,965.5	78	25.0	3,563.85	15,958.2	■

Assay Class: High Sensitivity DNA Assay
 Data Path: C:\Documents and Settings\UC Davis\Desktop\2014-09-26_005.xad

Created: 9/26/2014 1:54:14 PM
 Modified: 9/26/2014 2:40:35 PM

Electropherogram Summary Continued ...



Overall Results for sample 9 : sample 9

Number of peaks found: 14 Corr. Area 1: 2,412.2
 Noise: 0.1 Corr. Area 2: 2,082.4

Peak table for sample 9 : sample 9

Peak	Size [bp]	Conc. [pg/μl]	Molarity [pmol/l]	Observations
1	35	125.00	5,411.3	Lower Marker
2	297	756.87	3,864.3	
3	301	230.98	1,161.7	
4	321	162.61	767.9	
5	334	176.88	803.1	
6	355	381.15	1,626.0	
7	397	229.61	876.6	
8	445	119.71	407.4	
9	471	79.49	255.5	
10	495	72.46	221.9	
11	520	39.36	114.7	
12	535	74.26	210.4	
13	571	72.17	191.7	
14	610	36.77	91.4	
15	662	120.43	275.6	
16	10,380	75.00	10.9	Upper Marker

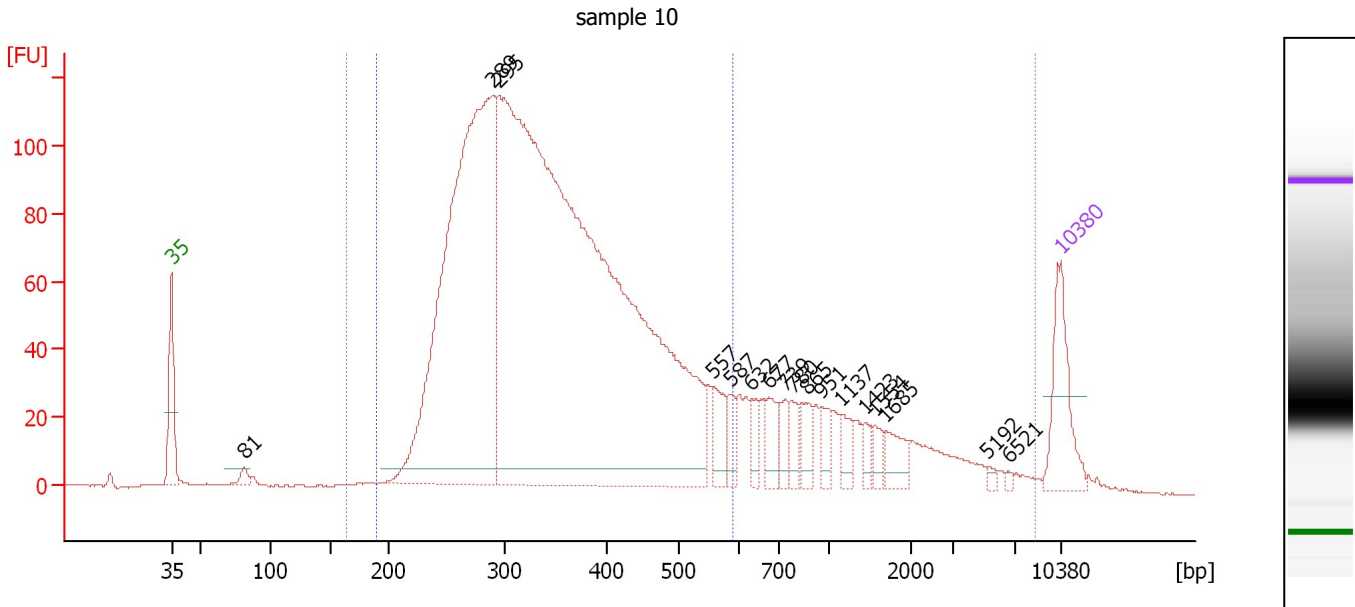
Region table for sample 9 : sample 9

From [bp]	Average Size [bp]	To [bp]	Corr. Area	% of Total	Size distribution in CV [%]	Conc. [pg/μl]	Molarity [pmol/l]	Color
165	545	8,500	2,412.2	99	100.0	2,991.27	12,406.0	Blue
190	371	590	2,082.4	85	24.6	2,650.78	11,787.7	Blue

Assay Class: High Sensitivity DNA Assay
 Data Path: C:\Documents and Settings\UC Davis\Desktop\2014-09-26_005.xad

Created: 9/26/2014 1:54:14 PM
 Modified: 9/26/2014 2:40:35 PM

Electropherogram Summary Continued ...



Overall Results for sample 10 : sample 10

Number of peaks found: 17 Corr. Area 1: 2,874.7
 Noise: 0.2 Corr. Area 2: 2,418.1

Peak table for sample 10 : sample 10

Peak	Size [bp]	Conc. [pg/μl]	Molarity [pmol/l]	Observations
1	35	125.00	5,411.3	Lower Marker
2	81	14.43	270.4	
3	289	1,032.55	5,406.5	
4	295	2,311.93	11,879.6	
5	557	41.56	113.0	
6	587	24.45	63.1	
7	632	24.58	59.0	
8	677	37.60	84.2	
9	739	22.35	45.8	
10	780	21.68	42.1	
11	865	25.84	45.2	
12	951	20.79	33.1	
13	1,137	23.06	30.7	
14	1,423	13.17	14.0	
15	1,554	12.97	12.6	
16	1,685	28.85	25.9	
17	5,192	4.11	1.2	
18	6,521	2.98	0.7	
19	10,380	75.00	10.9	Upper Marker

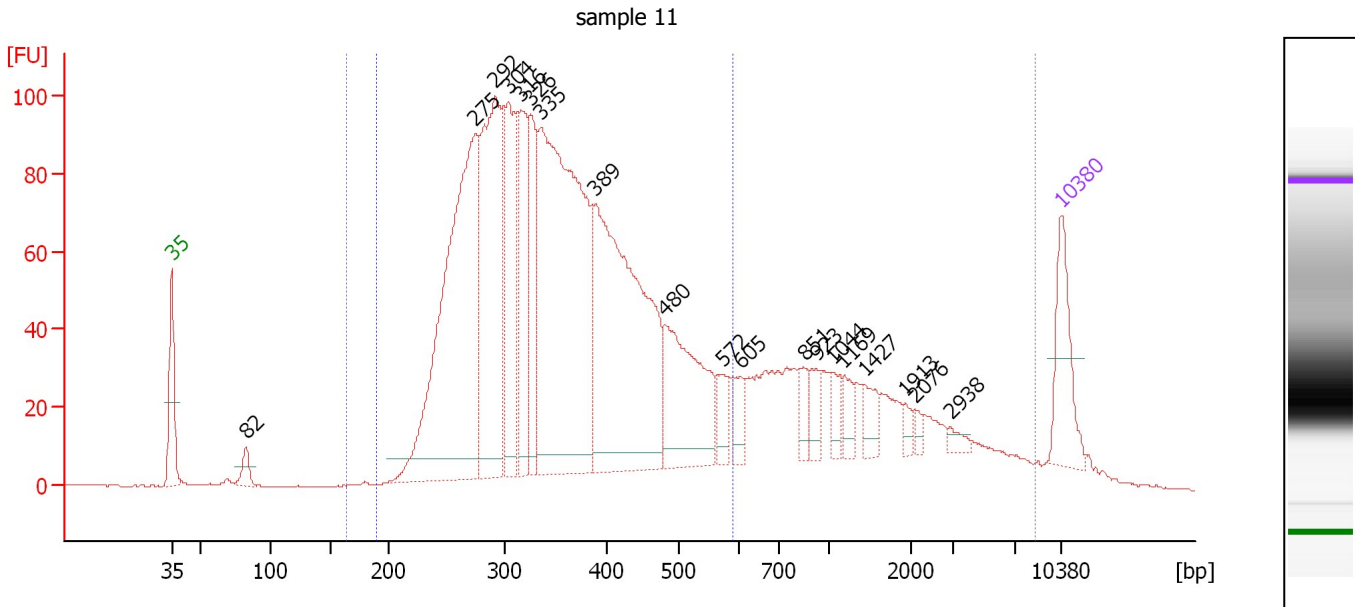
Region table for sample 10 : sample 10

From [bp]	Average Size [bp]	To [bp]	Corr. Area	% of Total	Size distribution in CV [%]	Conc. [pg/μl]	Molarity [pmol/l]	Color
165	616	8,500	2,874.7	98	100.0	3,694.68	15,782.8	Blue
190	351	590	2,418.1	83	24.4	3,221.85	15,015.4	Blue

Assay Class: High Sensitivity DNA Assay
 Data Path: C:\Documents and Settings\UC Davis\Desktop\2014-09-26_005.xad

Created: 9/26/2014 1:54:14 PM
 Modified: 9/26/2014 2:40:35 PM

Electropherogram Summary Continued ...



Overall Results for sample 11 : sample 11

Number of peaks found: 19 Corr. Area 1: 2,745.5
 Noise: 0.2 Corr. Area 2: 2,172.7

Peak table for sample 11 : sample 11

Peak	Size [bp]	Conc. [pg/μl]	Molarity [pmol/l]	Observations
1	35	125.00	5,411.3	Lower Marker
2	82	27.45	506.9	
3	275	669.31	3,687.9	
4	292	399.59	2,071.5	
5	304	230.28	1,148.2	
6	316	168.10	804.9	
7	326	140.54	653.5	
8	335	725.81	3,280.0	
9	389	558.38	2,176.6	
10	480	205.00	646.6	
11	572	35.91	95.1	
12	605	30.06	75.2	
13	851	24.67	43.9	
14	923	27.90	45.8	
15	1,044	20.76	30.1	
16	1,169	22.41	29.0	
17	1,427	26.83	28.5	
18	1,913	11.36	9.0	
19	2,076	7.55	5.5	
20	2,938	9.14	4.7	
21	10,380	75.00	10.9	Upper Marker

Region table for sample 11 : sample 11

From [bp]	Average Size [bp]	To [bp]	Corr. Area	% of Total	Size distribution in CV [%]	Conc. [pg/μl]	Molarity [pmol/l]	Color
165	736	8,500	2,745.5	97	100.0	4,079.86	16,506.3	Blue
190	358	590	2,172.7	77	24.0	3,389.01	15,474.4	Blue

Assay Class: High Sensitivity DNA Assay
Data Path: C:\Documents and Settings\UC Davis\Desktop\2014-09-26_005.xad

Created: 9/26/2014 1:54:14 PM
Modified: 9/26/2014 2:40:35 PM

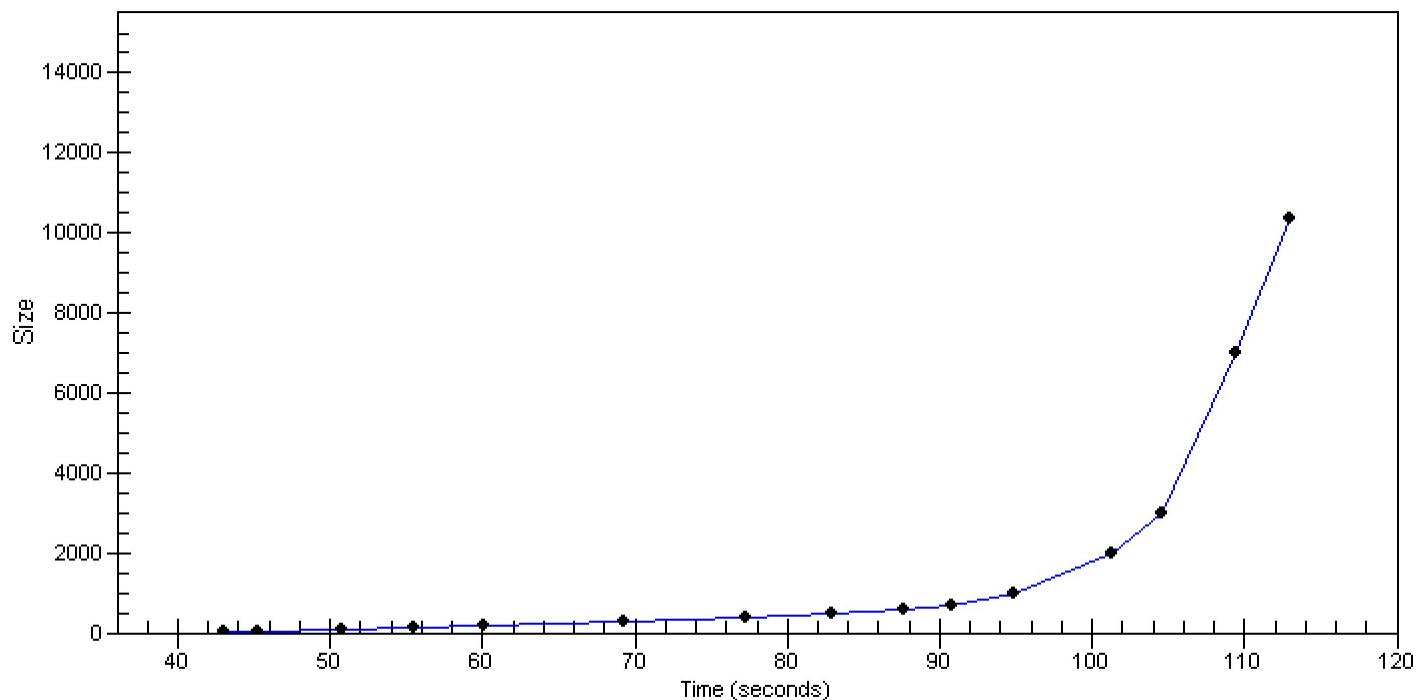
Gel Image

Assay Class: High Sensitivity DNA Assay
Data Path: C:\Documents and Settings\UC Davis\Desktop\2014-09-26_005.xad

Created: 9/26/2014 1:54:14 PM
Modified: 9/26/2014 2:40:35 PM

Curves

Standard Curve



Assay Class: High Sensitivity DNA Assay
 Data Path: C:\Documents and Settings\UC Davis\Desktop\2014-09-26_005.xad

Created: 9/26/2014 1:54:14 PM
 Modified: 9/26/2014 2:40:35 PM

Run Logbook

Description	Number	Source	Category	Sub Category	Time	Time Zone	User	Host
Run ended on port 1 (Number of wells acquired: 12)		Instrument	Run		9/26/2014 2:34:41 PM	(GMT --07:00) Pacific Standard Time	UC Davis	D8XSMGH1
Run started on port 1 (File: C:\Documents and Settings\Bioanalyser\2014-09-26\2014-09-26_005.xad)		Instrument	Run		9/26/2014 1:54:19 PM	(GMT --07:00) Pacific Standard Time	UC Davis	D8XSMGH1
Product Number : G2938B		Instrument	Run		9/26/2014 1:54:19 PM	(GMT --07:00) Pacific Standard Time	UC Davis	D8XSMGH1
Name :		Instrument	Run		9/26/2014 1:54:19 PM	(GMT --07:00) Pacific Standard Time	UC Davis	D8XSMGH1
Vendor : Agilent Technologies		Instrument	Run		9/26/2014 1:54:19 PM	(GMT --07:00) Pacific Standard Time	UC Davis	D8XSMGH1
Serial# : DE13701086		Instrument	Run		9/26/2014 1:54:19 PM	(GMT --07:00) Pacific Standard Time	UC Davis	D8XSMGH1
Firmware : C.01.069		Instrument	Run		9/26/2014 1:54:19 PM	(GMT --07:00) Pacific Standard Time	UC Davis	D8XSMGH1
Cartridge : Electrode		Instrument	Run		9/26/2014 1:54:19 PM	(GMT --07:00) Pacific Standard Time	UC Davis	D8XSMGH1