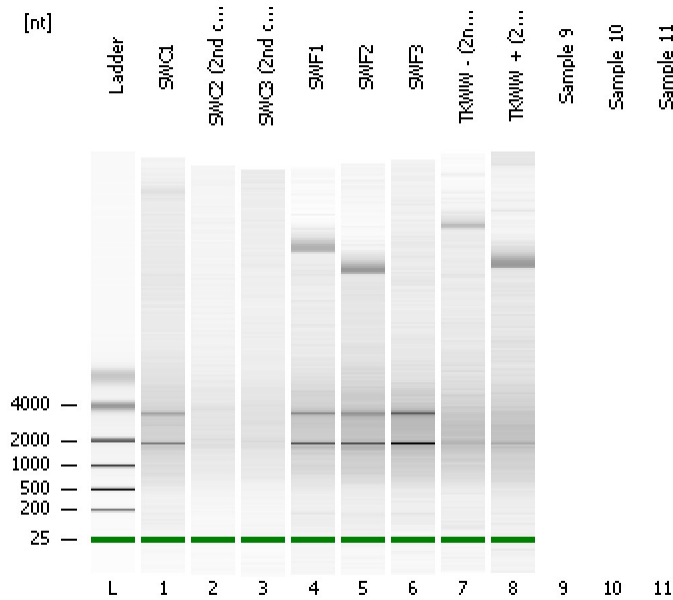


Assay Class: mRNA Pico
Data Path: C:\...ents and Settings\Bioanalyzer\2014-10-01\2014-10-01_004.xad

Created: 10/1/2014 1:33:47 PM
Modified: 10/1/2014 1:54:34 PM

Electrophoresis File Run Summary



Instrument Information:

Instrument Name: DE13701086 Firmware: C.01.069
Serial#: DE13701086 Type: G2938B

Assay Information:

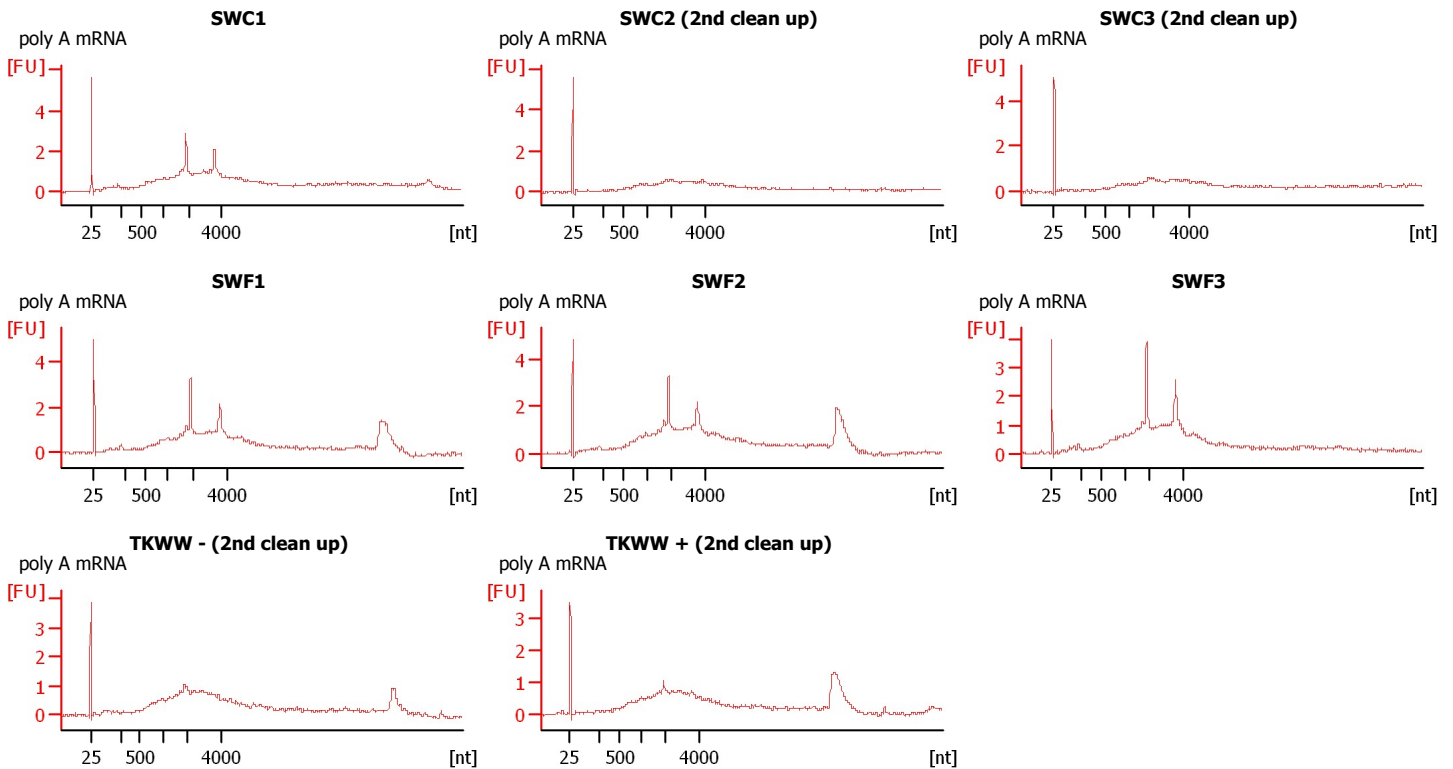
Assay Origin Path: C:\Program Files\Agilent\2100 bioanalyzer\2100 expert\assays\RNA\mRNA Pico Series II.xsy

Assay Class: mRNA Pico
Version: 2.6
Assay Comments: mRNA Analysis pg sensitivity

© Copyright 2003 - 2009 Agilent Technologies, Inc.

Chip Information:

Chip Lot #: Reagent Kit Lot #:
Chip Comments:



Assay Class: mRNA Pico
Data Path: C:\...ents and Settings\Bioanalyzer\2014-10-01\2014-10-01_004.xad

Created: 10/1/2014 1:33:47 PM
Modified: 10/1/2014 1:54:34 PM

Electrophoresis File Run Summary (Chip Summary)

Sample Name	Sample Comment	Status	Result Label	Result Color
SWC1	poly A mRNA	✓		
SWC2 (2nd clean up)	poly A mRNA	✓		
SWC3 (2nd clean up)	poly A mRNA	✓		
SWF1	poly A mRNA	✓		
SWF2	poly A mRNA	✓		
SWF3	poly A mRNA	✓		
TKWW - (2nd clean up)	poly A mRNA	✓		
TKWW + (2nd clean up)	poly A mRNA	✓		
Sample 9				
Sample 10				
Sample 11				
Ladder		✓		

Chip Lot #**Reagent Kit Lot #****Chip Comments :**

Assay Class: mRNA Pico
Data Path: C:\...ents and Settings\Bioanalyzer\2014-10-01\2014-10-01_004.xad

Created: 10/1/2014 1:33:47 PM
Modified: 10/1/2014 1:54:34 PM

Electrophoresis Assay Details

General Analysis Settings

Number of Available Sample and Ladder Wells (Max.) : 12

Minimum Visible Range [s] : 14

Maximum Visible Range [s] : 85

Start Analysis Time Range [s] : 15

End Analysis Time Range [s] : 84

Ladder Concentration [pg/ μ l] : 1000

Lower Marker Concentration [pg/ μ l] : 0

Upper Marker Concentration [pg/ μ l] : 0

Used Lower Marker for Quantitation

Standard Curve Fit is Logarithmic

Show Data Aligned to Lower Marker

Integrator Settings

Integration Start Time [s] : 15

Integration End Time [s] : 84

Slope Threshold : 0.2

Height Threshold [FU] : 0.5

Area Threshold : 0.1

Width Threshold [s] : 0.2

Baseline Plateau [s] : 0.5

Filter Settings

Filter Width [s] : 0.5

Polynomial Order : 4

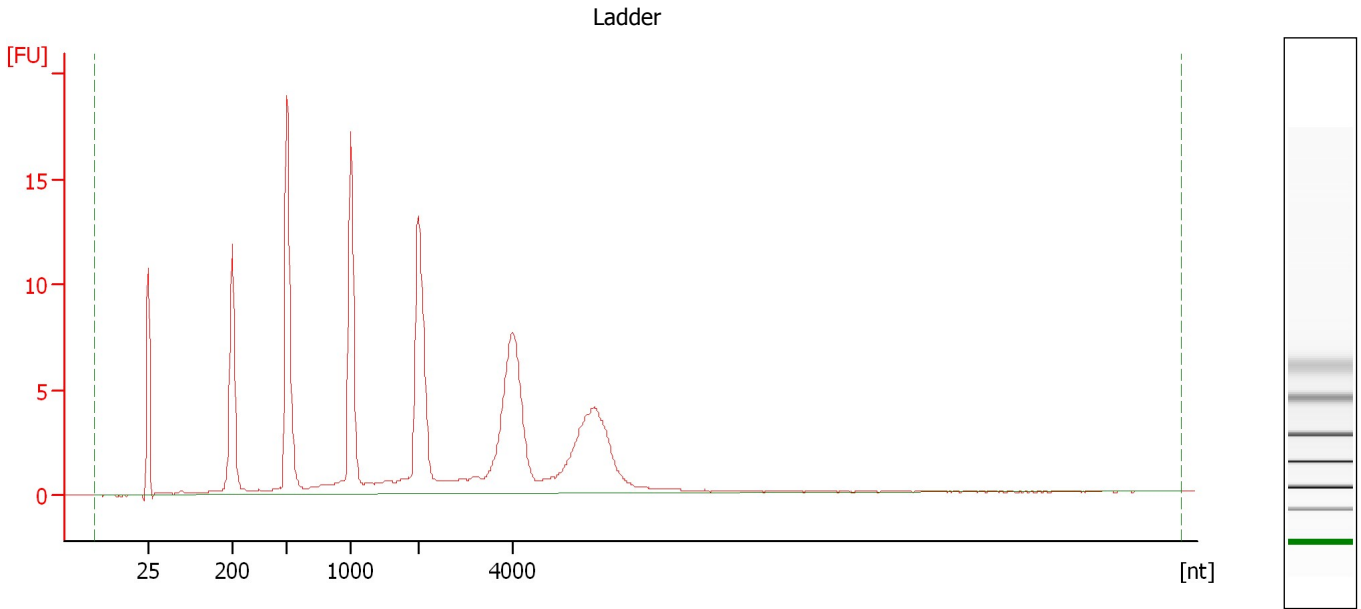
Ladder

Ladder Peak	Size
1	25
2	200
3	500
4	1000
5	2000
6	4000

Assay Class: mRNA Pico
Data Path: C:\...ents and Settings\Bioanalyzer\2014-10-01\2014-10-01_004.xad

Created: 10/1/2014 1:33:47 PM
Modified: 10/1/2014 1:54:34 PM

Electropherogram Summary



Overall Results for Ladder

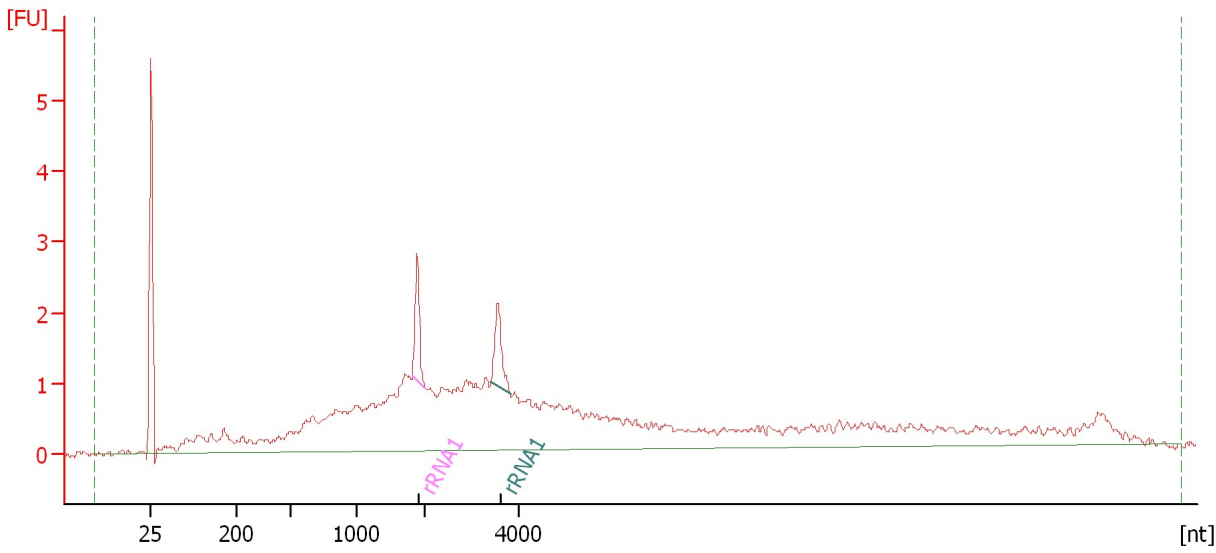
RNA Area: 162.4 RNA Concentration: 1,000 pg/μl

Assay Class: mRNA Pico
Data Path: C:\...ents and Settings\Bioanalyzer\2014-10-01\2014-10-01_004.xad

Created: 10/1/2014 1:33:47 PM
Modified: 10/1/2014 1:54:34 PM

Electropherogram Summary Continued ...

SWC1 [poly A mRNA]



Overall Results for sample 1 : SWC1

RNA Area: 60.1 rRNA Contamination: 4.9 %
RNA Concentration: 370 pg/μl

Fragment table for sample 1 : SWC1

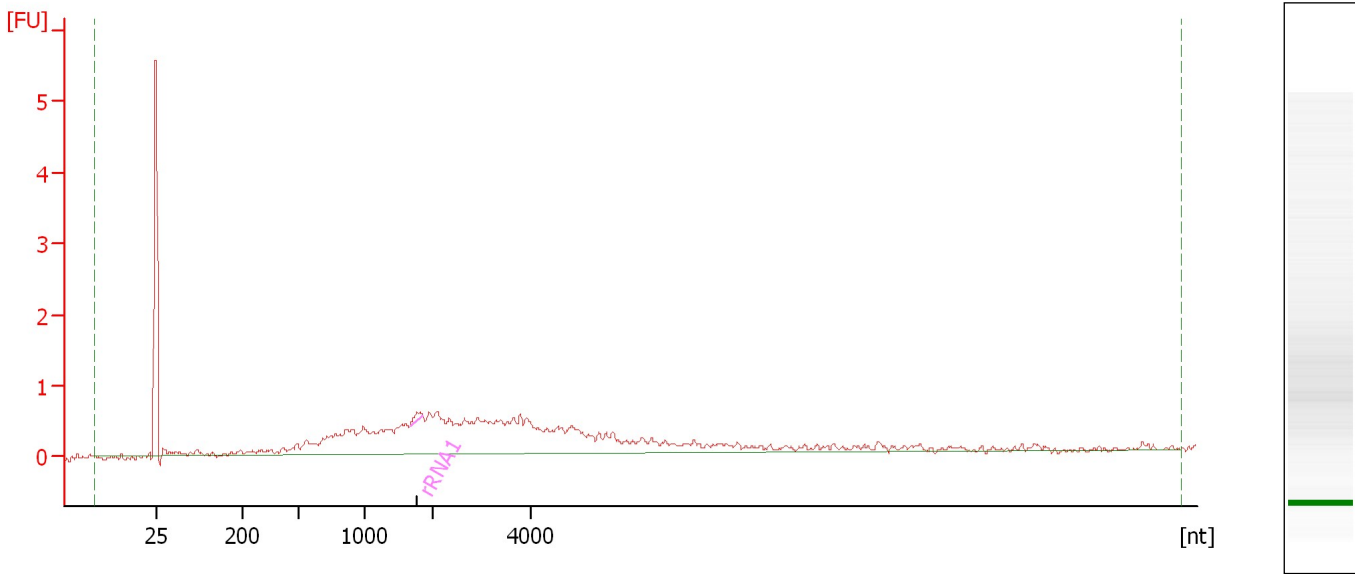
Name	Start Size [nt]	End Size [nt]	Area	% of total Area
rRNA1	1,831	2,024	1.5	2.5
rRNA1	3,400	3,803	1.4	2.4

Assay Class: mRNA Pico
Data Path: C:\...ents and Settings\Bioanalyzer\2014-10-01\2014-10-01_004.xad

Created: 10/1/2014 1:33:47 PM
Modified: 10/1/2014 1:54:34 PM

Electropherogram Summary Continued ...

SWC2 (2nd clean up) [poly A mRNA]



Overall Results for sample 2 : SWC2 (2nd clean up)

RNA Area: 24.1 rRNA Contamination: 0.6 %
RNA Concentration: 148 pg/μl

Fragment table for sample 2 : SWC2 (2nd clean up)

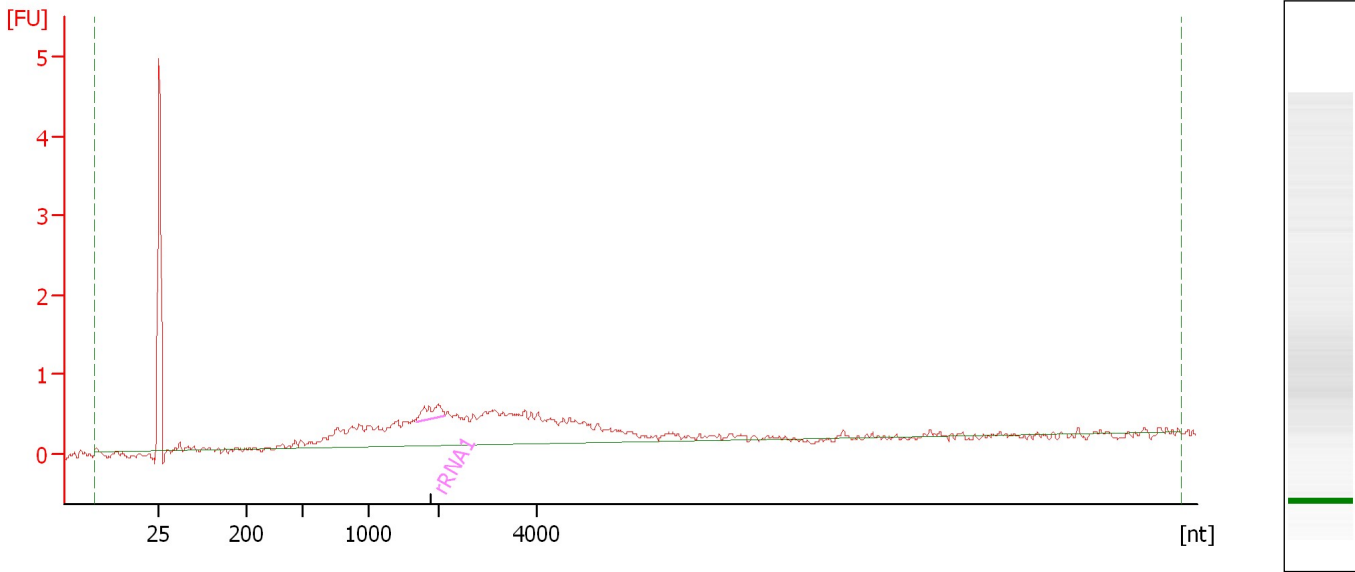
Name	Start Size [nt]	End Size [nt]	Area	% of total Area
rRNA1	1,669	1,853	0.1	0.6

Assay Class: mRNA Pico
Data Path: C:\...ents and Settings\Bioanalyzer\2014-10-01\2014-10-01_004.xad

Created: 10/1/2014 1:33:47 PM
Modified: 10/1/2014 1:54:34 PM

Electropherogram Summary Continued ...

SWC3 (2nd clean up) [poly A mRNA]



Overall Results for sample 3 : SWC3 (2nd clean up)

RNA Area: 15.6 rRNA Contamination: 3.2 %
RNA Concentration: 96 pg/μl

Fragment table for sample 3 : SWC3 (2nd clean up)

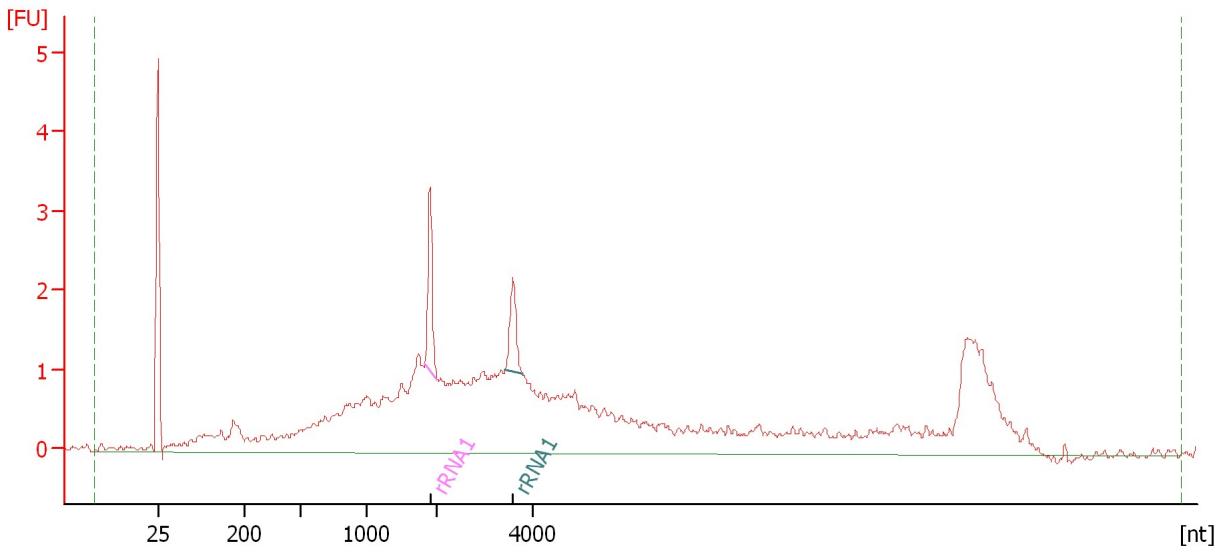
Name	Start Size [nt]	End Size [nt]	Area	% of total Area
rRNA1	1,678	2,126	0.5	3.2

Assay Class: mRNA Pico
Data Path: C:\...ents and Settings\Bioanalyzer\2014-10-01\2014-10-01_004.xad

Created: 10/1/2014 1:33:47 PM
Modified: 10/1/2014 1:54:34 PM

Electropherogram Summary Continued ...

SWF1 [poly A mRNA]



Overall Results for sample 4 : SWF1

RNA Area: 63.7 rRNA Contamination: 5.0 %
RNA Concentration: 392 pg/μl

Fragment table for sample 4 : SWF1

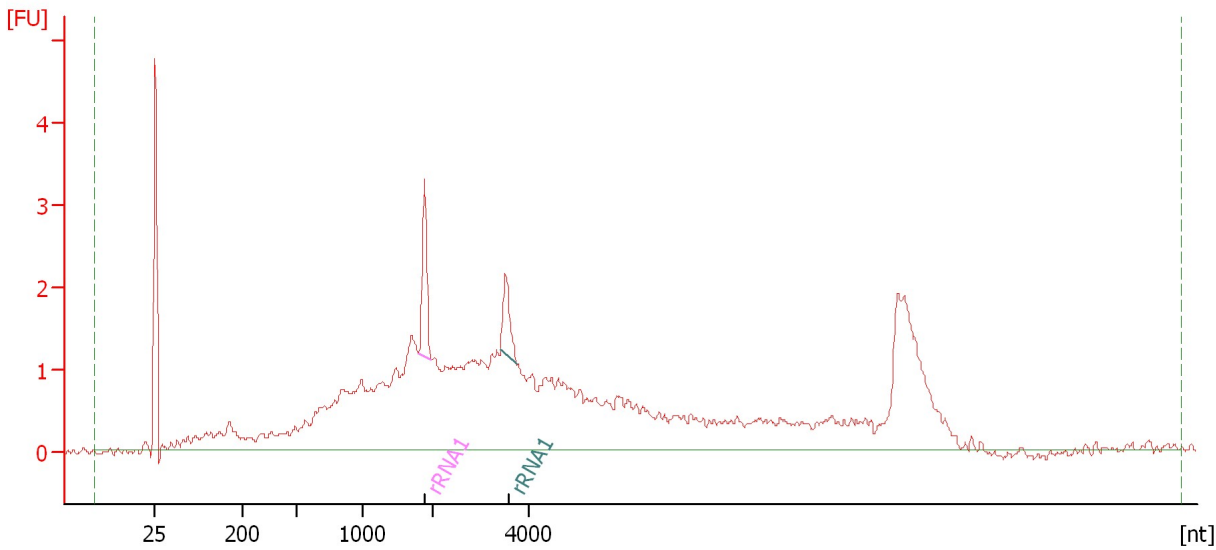
Name	Start Size [nt]	End Size [nt]	Area	% of total Area
rRNA1	1,845	2,024	1.9	3.0
rRNA1	3,421	3,766	1.2	2.0

Assay Class: mRNA Pico
Data Path: C:\...ents and Settings\Bioanalyzer\2014-10-01\2014-10-01_004.xad

Created: 10/1/2014 1:33:47 PM
Modified: 10/1/2014 1:54:34 PM

Electropherogram Summary Continued ...

SWF2 [poly A mRNA]



Overall Results for sample 5 : SWF2

RNA Area: 69.6 rRNA Contamination: 4.4 %
RNA Concentration: 429 pg/μl

Fragment table for sample 5 : SWF2

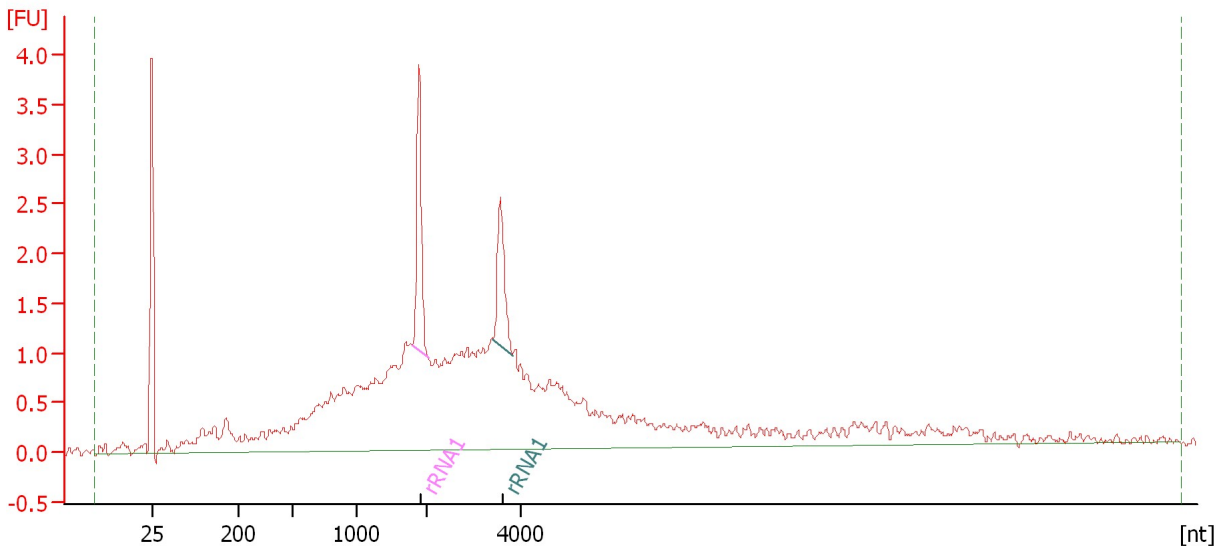
Name	Start Size [nt]	End Size [nt]	Area	% of total Area
rRNA1	1,805	1,989	1.9	2.7
rRNA1	3,426	3,740	1.2	1.7

Assay Class: mRNA Pico
Data Path: C:\...ents and Settings\Bioanalyzer\2014-10-01\2014-10-01_004.xad

Created: 10/1/2014 1:33:47 PM
Modified: 10/1/2014 1:54:34 PM

Electropherogram Summary Continued ...

SWF3 [poly A mRNA]



Overall Results for sample 6 : SWF3

RNA Area: 55.2 rRNA Contamination: 8.0 %
RNA Concentration: 340 pg/μl

Fragment table for sample 6 : SWF3

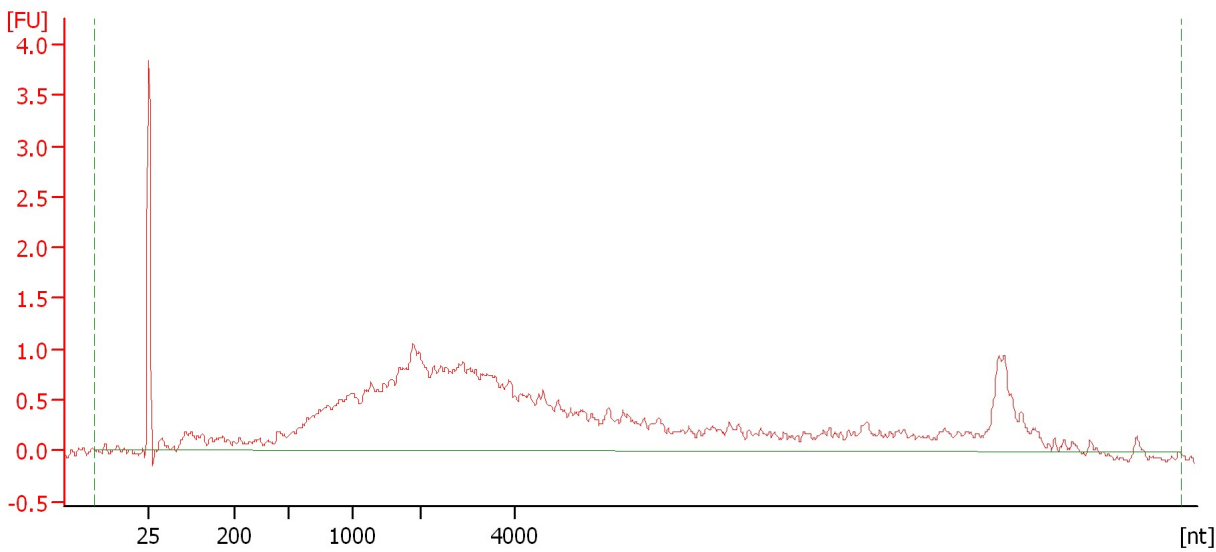
Name	Start Size [nt]	End Size [nt]	Area	% of total Area
rRNA1	1,798	2,043	2.6	4.7
rRNA1	3,415	3,800	1.8	3.3

Assay Class: mRNA Pico
Data Path: C:\...ents and Settings\Bioanalyzer\2014-10-01\2014-10-01_004.xad

Created: 10/1/2014 1:33:47 PM
Modified: 10/1/2014 1:54:34 PM

Electropherogram Summary Continued ...

TKWW - (2nd clean up) [poly A mRNA]



Overall Results for sample 7 : TKWW - (2nd clean up)

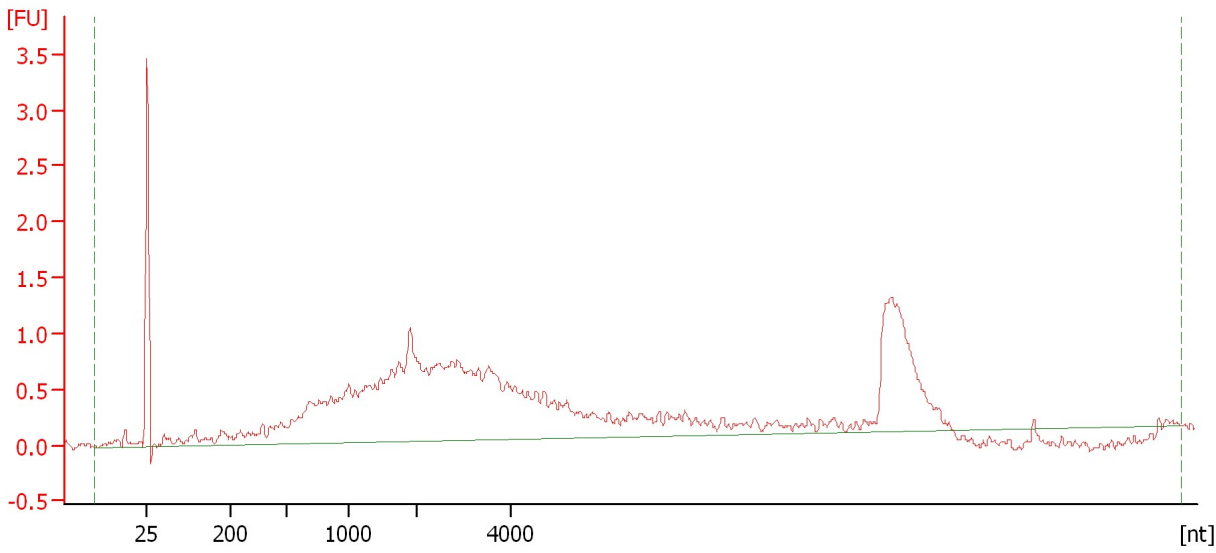
RNA Area: 44.1 rRNA Contamination: 0.0 %
RNA Concentration: 271 pg/μl

Assay Class: mRNA Pico
Data Path: C:\...ents and Settings\Bioanalyzer\2014-10-01\2014-10-01_004.xad

Created: 10/1/2014 1:33:47 PM
Modified: 10/1/2014 1:54:34 PM

Electropherogram Summary Continued ...

TKWW + (2nd clean up) [poly A mRNA]



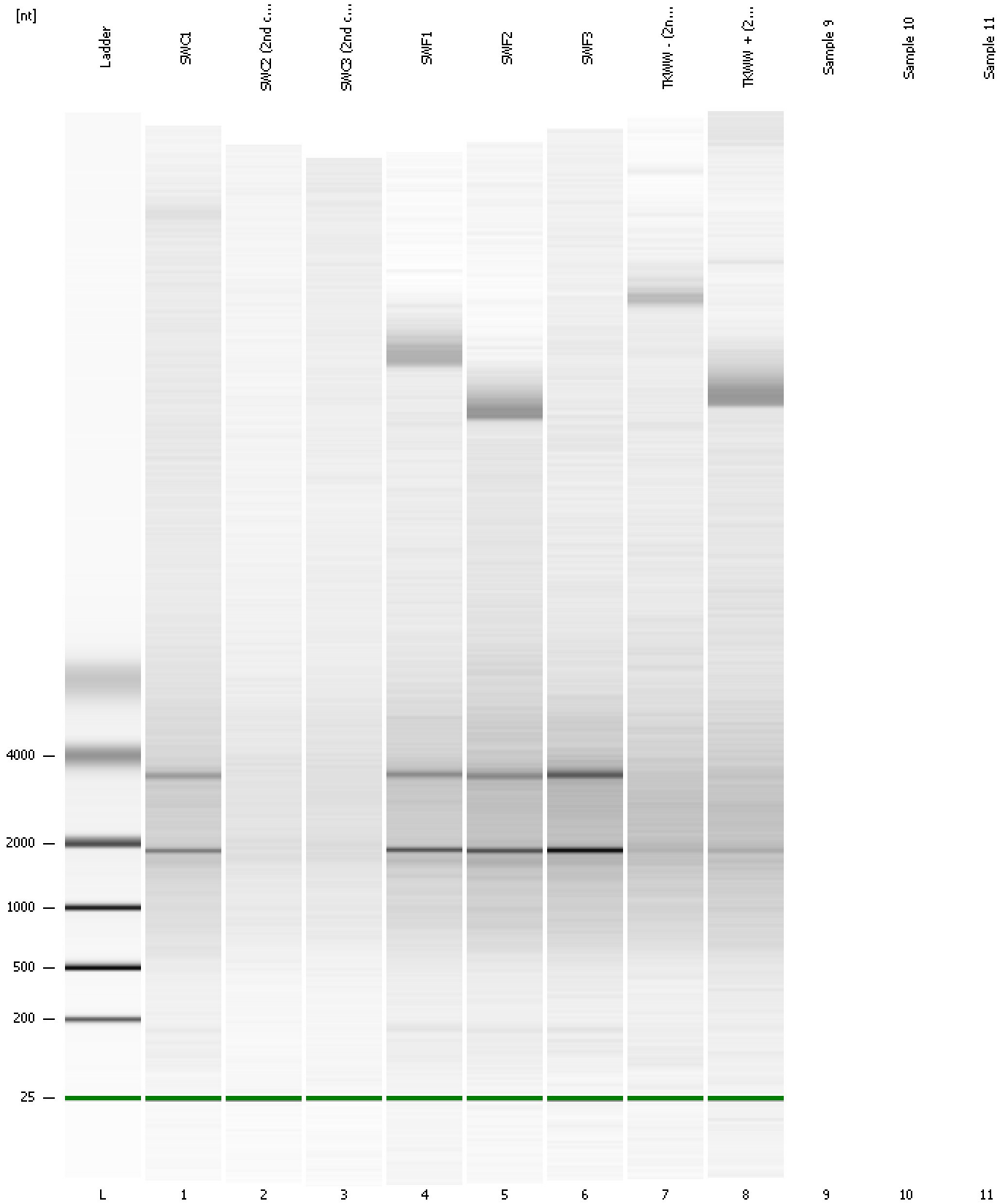
Overall Results for sample 8 : TKWW + (2nd clean up)

RNA Area: 36.5 rRNA Contamination: 0.0 %
RNA Concentration: 224 pg/μl

Assay Class: mRNA Pico
Data Path: C:\...ents and Settings\Bioanalyzer\2014-10-01\2014-10-01_004.xad

Created: 10/1/2014 1:33:47 PM
Modified: 10/1/2014 1:54:34 PM

Gel Image

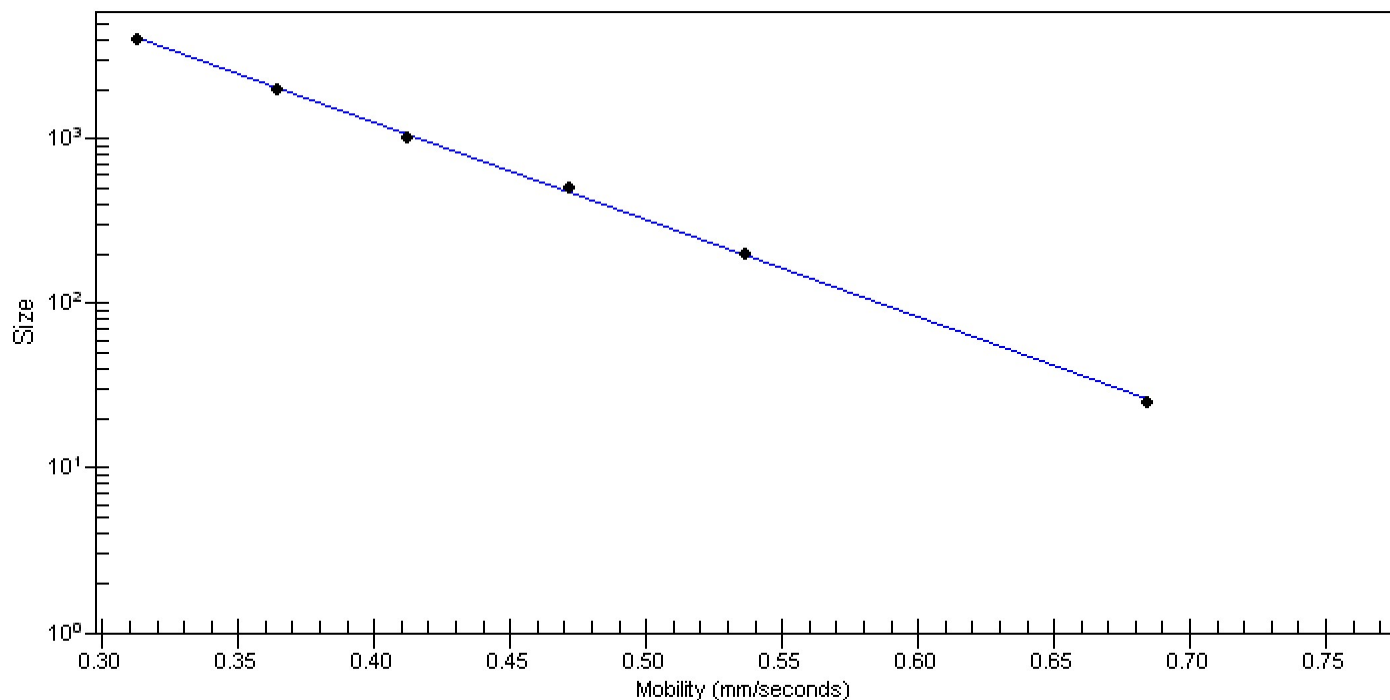


Assay Class: mRNA Pico
Data Path: C:\...ents and Settings\Bioanalyzer\2014-10-01\2014-10-01_004.xad

Created: 10/1/2014 1:33:47 PM
Modified: 10/1/2014 1:54:34 PM

Curves

Standard Curve



Assay Class: mRNA Pico
Data Path: C:\...ents and Settings\Bioanalyzer\2014-10-01\2014-10-01_004.xad

Created: 10/1/2014 1:33:47 PM
Modified: 10/1/2014 1:54:34 PM

Invalid Samples

Sample 9 has not been run, no results available.

Sample 10 has not been run, no results available.

Sample 11 has not been run, no results available.

Assay Class: mRNA Pico
 Data Path: C:\...ents and Settings\Bioanalyzer\2014-10-01\2014-10-01_004.xad

Created: 10/1/2014 1:33:47 PM
 Modified: 10/1/2014 1:54:34 PM

Run Logbook

Description	Number	Source	Category	Sub Category	Time	Time Zone	User	Host
Run ended on port 1 (Number of wells acquired: 9)		Instrument	Run		10/1/2014 1:54:31 PM	(GMT --07:00) Pacific Standard Time	UC Davis	D8XSMGH1
Run started on port 1 (File: C:\Documents and Settings\Bioanalyzer\2014-10-01\2014-10-01_004.xad)		Instrument	Run		10/1/2014 1:33:47 PM	(GMT --07:00) Pacific Standard Time	UC Davis	D8XSMGH1
Product Number : G2938B		Instrument	Run		10/1/2014 1:33:47 PM	(GMT --07:00) Pacific Standard Time	UC Davis	D8XSMGH1
Name :		Instrument	Run		10/1/2014 1:33:47 PM	(GMT --07:00) Pacific Standard Time	UC Davis	D8XSMGH1
Vendor : Agilent Technologies		Instrument	Run		10/1/2014 1:33:47 PM	(GMT --07:00) Pacific Standard Time	UC Davis	D8XSMGH1
Serial# : DE13701086		Instrument	Run		10/1/2014 1:33:47 PM	(GMT --07:00) Pacific Standard Time	UC Davis	D8XSMGH1
Firmware : C.01.069		Instrument	Run		10/1/2014 1:33:47 PM	(GMT --07:00) Pacific Standard Time	UC Davis	D8XSMGH1
Cartridge : Electrode		Instrument	Run		10/1/2014 1:33:47 PM	(GMT --07:00) Pacific Standard Time	UC Davis	D8XSMGH1