

Assay Class: High Sensitivity DNA Assay
Data Path: C:\...ents and Settings\Bioanalyzer\2014-10-07\2014-10-07_001.xad

Created: 10/7/2014 11:27:05 AM
Modified: 10/7/2014 12:17:54 PM

Electrophoresis File Run Summary

Instrument Information:

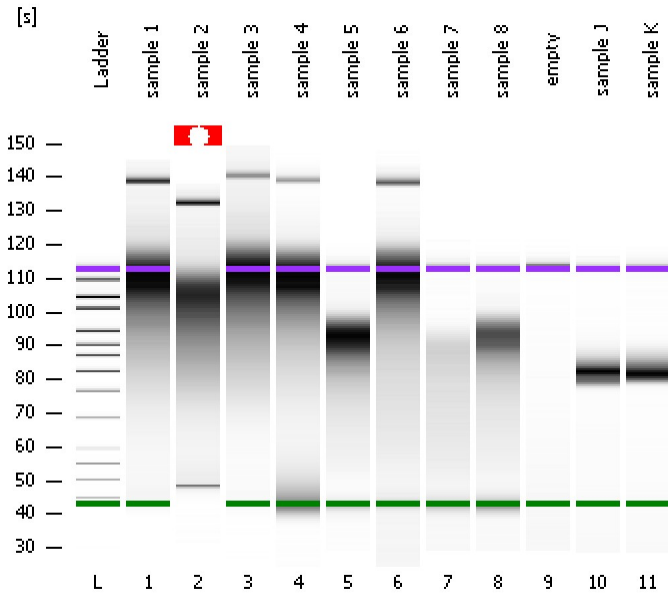
Instrument Name: DE13701086 Firmware: C.01.069
Serial#: DE13701086 Type: G2938B

Assay Information:

Assay Origin Path: C:\Program Files\Agilent\2100 bioanalyzer\2100 expert\assays\dsDNA\High Sensitivity DNA.xsy
Assay Class: High Sensitivity DNA Assay
Version: 1.03
Assay Comments: Copyright © 2003-2010 Agilent Technologies

Chip Information:

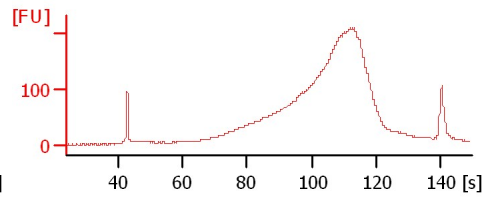
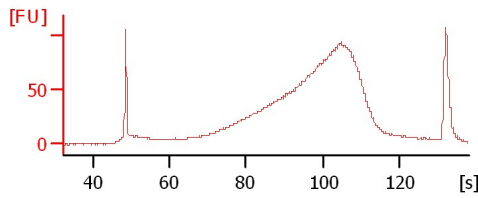
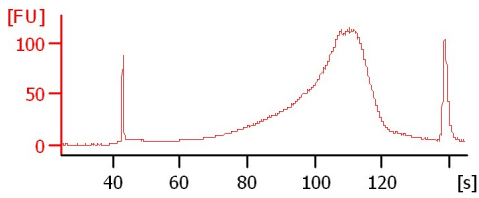
Chip Lot #:
Reagent Kit Lot #:
Chip Comments:



sample 1

sample 2

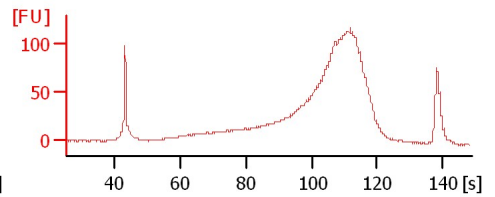
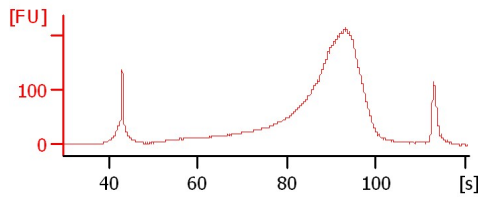
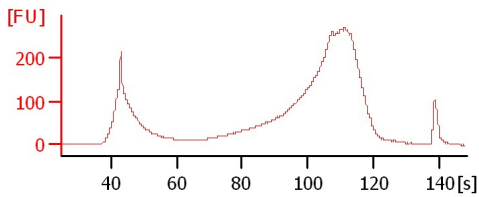
sample 3



sample 4

sample 5

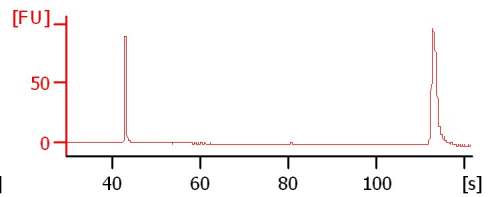
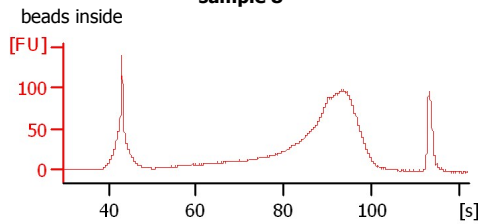
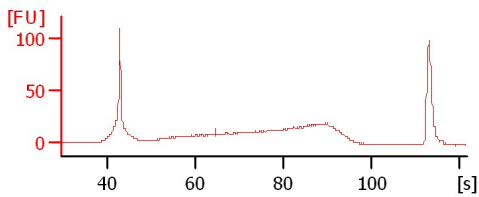
sample 6



sample 7

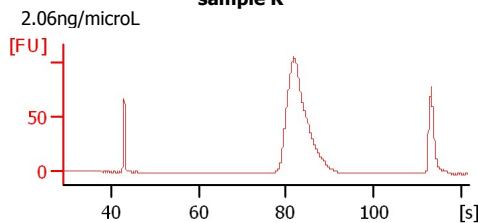
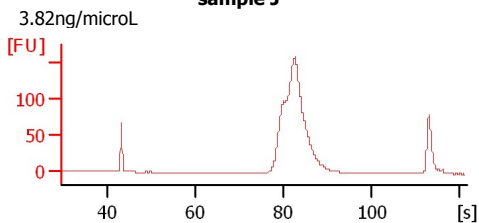
sample 8

empty



sample J

sample K



Assay Class: High Sensitivity DNA Assay
Data Path: C:\...ents and Settings\Bioanalyzer\2014-10-07\2014-10-07_001.xad

Created: 10/7/2014 11:27:05 AM
Modified: 10/7/2014 12:17:54 PM

Electrophoresis File Run Summary (Chip Summary)

Sample Name	Sample Comment	Rest. Digest	Status	Observation	Result Label	Result Color
sample 1		<input type="checkbox"/>	✓			
sample 2		<input type="checkbox"/>	✓			
sample 3		<input type="checkbox"/>	✓			
sample 4		<input type="checkbox"/>	✓			
sample 5		<input type="checkbox"/>	✓			
sample 6		<input type="checkbox"/>	✓			
sample 7		<input type="checkbox"/>	✓			
sample 8	beads inside	<input type="checkbox"/>	✓			
empty		<input type="checkbox"/>	✓			
sample J	3.82ng/microL	<input type="checkbox"/>	✓			
sample K	2.06ng/microL	<input type="checkbox"/>	✓			
Ladder		<input type="checkbox"/>	✓			

Chip Lot #

Reagent Kit Lot #

Chip Comments :

Assay Class: High Sensitivity DNA Assay
Data Path: C:\...ents and Settings\Bioanalyzer\2014-10-07\2014-10-07_001.xad

Created: 10/7/2014 11:27:05 AM
Modified: 10/7/2014 12:17:54 PM

Electrophoresis Assay Details

General Analysis Settings

Number of Available Sample and Ladder Wells (Max.) : 12
Minimum Visible Range [s] : 32
Maximum Visible Range [s] : 138
Start Analysis Time Range [s] : 33
End Analysis Time Range [s] : 137.5
Ladder Concentration [pg/μl] : 1950
Uses Standard Area for Ladder Fragments
Lower Marker Concentration [pg/μl] : 125
Upper Marker Concentration [pg/μl] : 75
Used Upper Marker for Quantitation
Standard Curve Fit is Point to Point
Show Data Aligned to Lower and Upper Marker

Integrator Settings

Integration Start Time [s] : 33.05
Integration End Time [s] : 137
Slope Threshold : 0.8
Height Threshold [FU] : 5
Area Threshold : 0.1
Width Threshold [s] : 0.6
Baseline Plateau [s] : 0.5

Filter Settings

Filter Width [s] : 0.5
Polynomial Order : 4

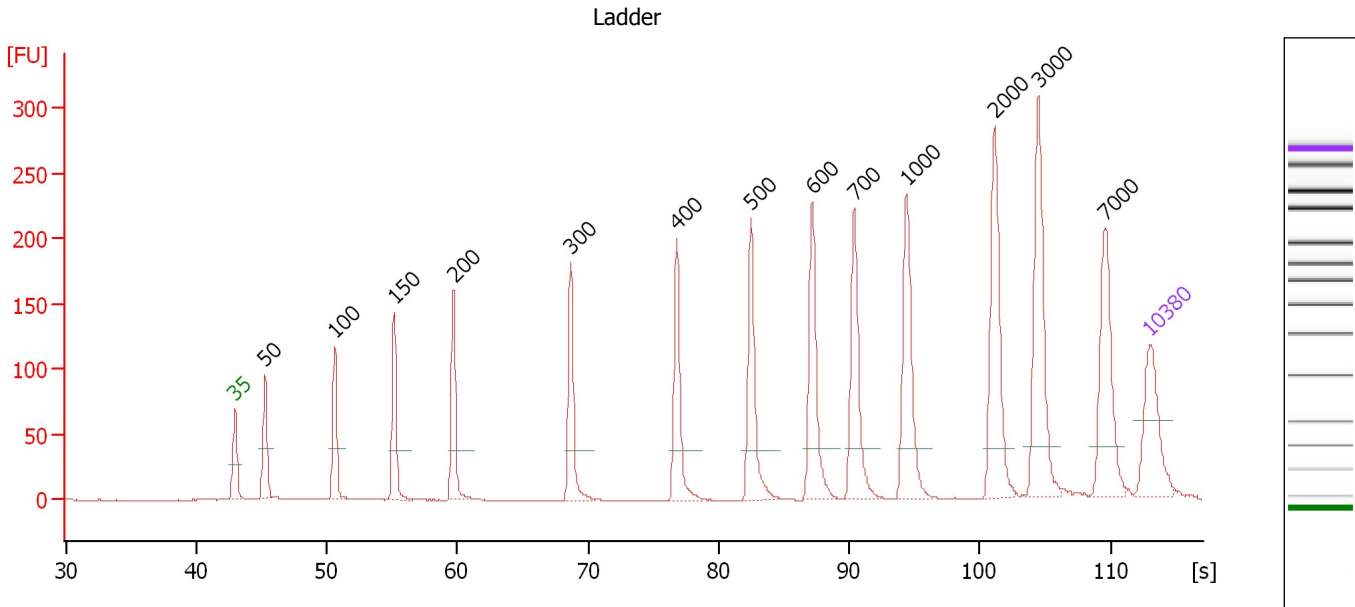
Ladder

Ladder Peak	Size	Area
1	35	160
2	50	210
3	100	208
4	150	221
5	200	242
6	300	270
7	400	305
8	500	306
9	600	336
10	700	321
11	1000	366
12	2000	413
13	3000	411
14	7000	400
15	10380	214

Assay Class: High Sensitivity DNA Assay
 Data Path: C:\...ents and Settings\Bioanalyzer\2014-10-07\2014-10-07_001.xad

Created: 10/7/2014 11:27:05 AM
 Modified: 10/7/2014 12:17:54 PM

Electropherogram Summary



Overall Results for Ladder

Noise: 0.1

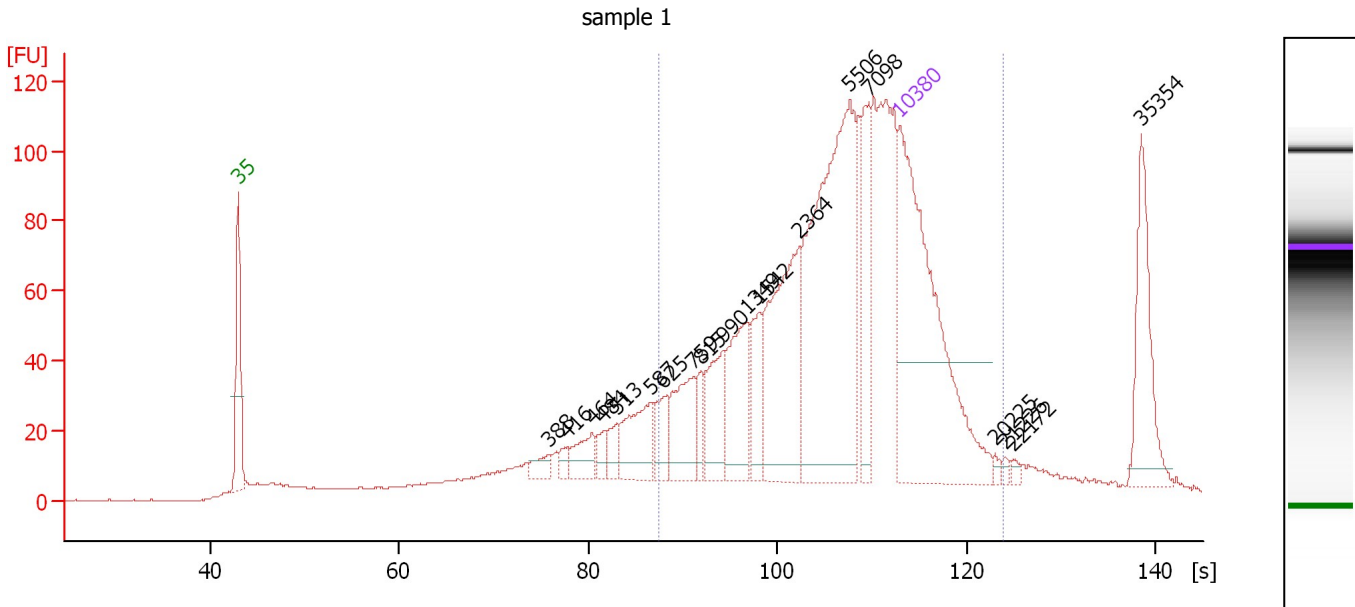
Peak table for Ladder

Peak	Size [bp]	Conc. [pg/μl]	Molarity [pmol/l]	Observations
1	35	125.00	5,411.3	Lower Marker
2	50	150.00	4,545.5	Ladder Peak
3	100	150.00	2,272.7	Ladder Peak
4	150	150.00	1,515.2	Ladder Peak
5	200	150.00	1,136.4	Ladder Peak
6	300	150.00	757.6	Ladder Peak
7	400	150.00	568.2	Ladder Peak
8	500	150.00	454.5	Ladder Peak
9	600	150.00	378.8	Ladder Peak
10	700	150.00	324.7	Ladder Peak
11	1,000	150.00	227.3	Ladder Peak
12	2,000	150.00	113.6	Ladder Peak
13	3,000	150.00	75.8	Ladder Peak
14	7,000	150.00	32.5	Ladder Peak
15	10,380	75.00	10.9	Upper Marker

Assay Class: High Sensitivity DNA Assay
 Data Path: C:\...ents and Settings\Bioanalyzer\2014-10-07\2014-10-07_001.xad

Created: 10/7/2014 11:27:05 AM
 Modified: 10/7/2014 12:17:54 PM

Electropherogram Summary Continued ...



Overall Results for sample 1 : sample 1

Number of peaks found: 19 Corr. Area 1: 1,474.9
 Noise: 0.2

Peak table for sample 1 : sample 1

Peak	Size [bp]	Conc. [pg/μl]	Molarity [pmol/l]	Observations
1	35	125.00	5,411.3	Lower Marker
2	388	4.33	16.9	
3	416	2.77	10.1	
4	464	9.07	29.6	
5	484	4.33	13.6	
6	513	5.75	17.0	
7	587	18.15	46.8	
8	625	9.30	22.5	
9	759	19.71	39.3	
10	815	5.60	10.4	
11	990	16.20	24.8	
12	1,349	22.51	25.3	
13	1,542	11.87	11.7	
14	2,364	43.32	27.8	
15	5,506	96.07	26.4	
16	7,098	19.57	4.2	
17	10,380	75.00	10.9	Upper Marker
18	20,225	0.00	0.0	
19	21,226	0.00	0.0	
20	22,172	0.00	0.0	
21	35,354	0.00	0.0	

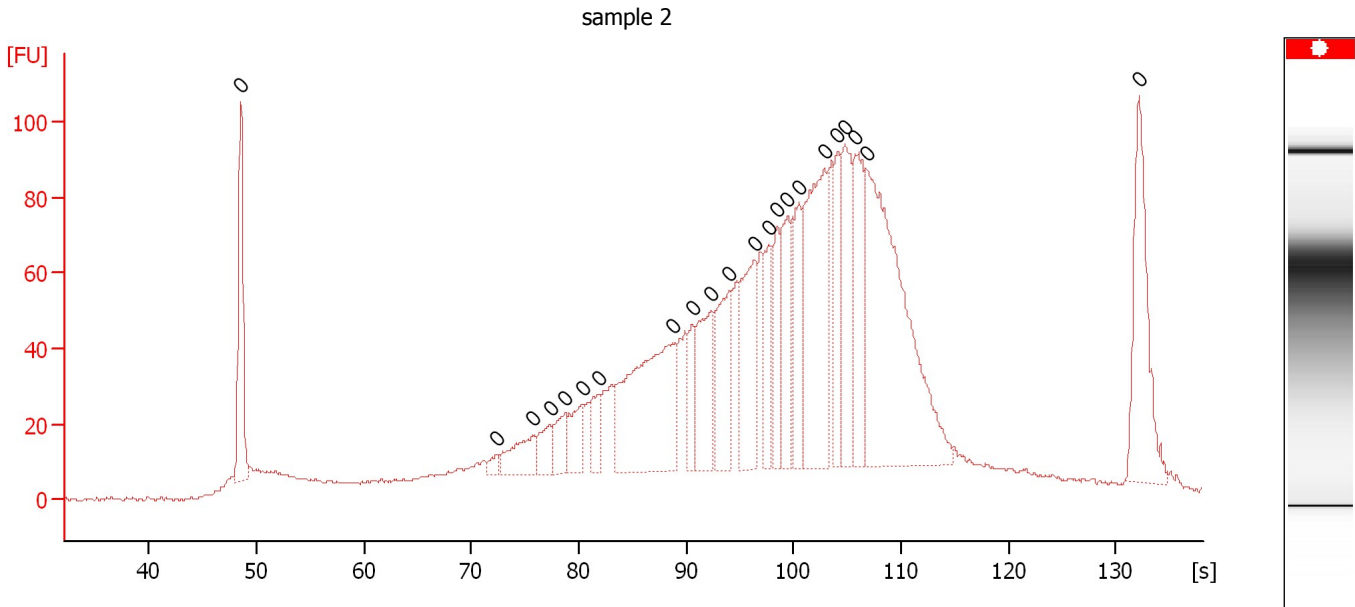
Region table for sample 1 : sample 1

From [bp]	Average Size [bp]	To [bp]	Corr. Area	% of Total	Size distribution in CV [%]	Conc. [pg/μl]	Molarity [pmol/l]	Color
610	6,223	21,129	1,474.9	71	77.0	326.05	247.6	Blue

Assay Class: High Sensitivity DNA Assay
Data Path: C:\...ents and Settings\Bioanalyzer\2014-10-07\2014-10-07_001.xad

Created: 10/7/2014 11:27:05 AM
Modified: 10/7/2014 12:17:54 PM

Electropherogram Summary Continued ...



Overall Results for sample 2 : sample 2

Number of peaks found: 0 Noise: 0.3

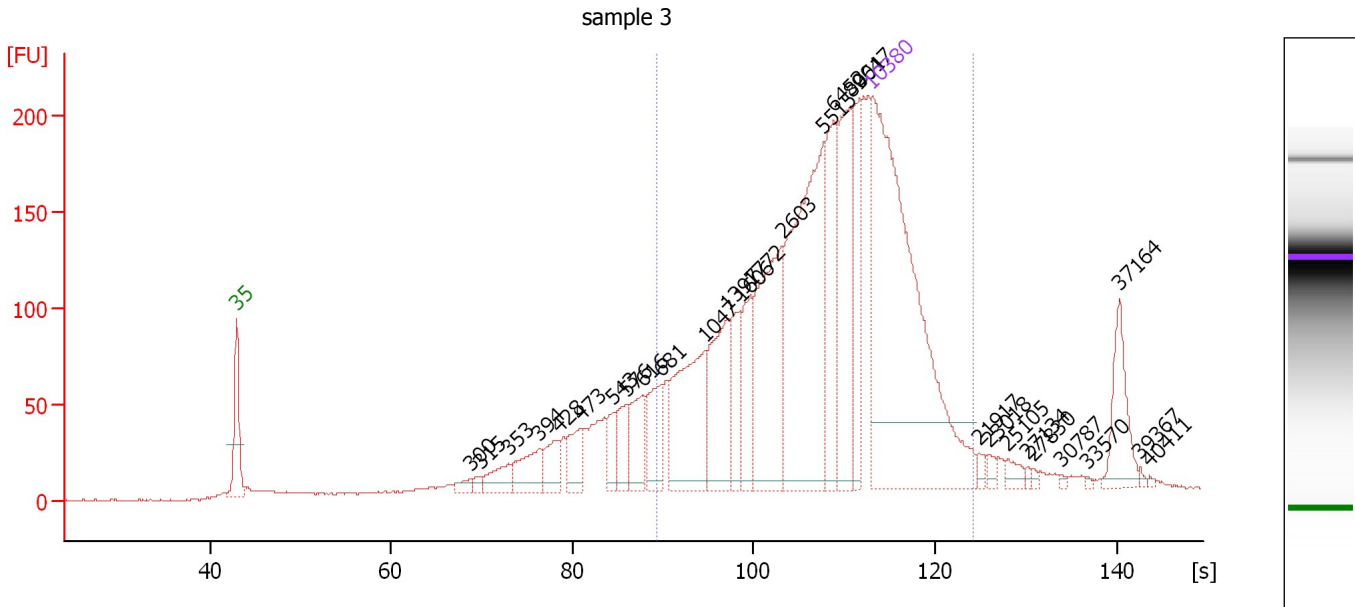
Peak table for sample 2 : sample 2

Peak	Size [bp]	Conc. [pg/μl]	Molarity [pmol/l]	Observations
1	0	0.00	0.0	
2	0	0.00	0.0	
3	0	0.00	0.0	
4	0	0.00	0.0	
5	0	0.00	0.0	
6	0	0.00	0.0	
7	0	0.00	0.0	
8	0	0.00	0.0	
9	0	0.00	0.0	
10	0	0.00	0.0	
11	0	0.00	0.0	
12	0	0.00	0.0	
13	0	0.00	0.0	
14	0	0.00	0.0	
15	0	0.00	0.0	
16	0	0.00	0.0	
17	0	0.00	0.0	
18	0	0.00	0.0	
19	0	0.00	0.0	
20	0	0.00	0.0	
21	0	0.00	0.0	
22	0	0.00	0.0	

Assay Class: High Sensitivity DNA Assay
 Data Path: C:\...ents and Settings\Bioanalyzer\2014-10-07\2014-10-07_001.xad

Created: 10/7/2014 11:27:05 AM
 Modified: 10/7/2014 12:17:54 PM

Electropherogram Summary Continued ...



Overall Results for sample 3 : sample 3

Number of peaks found: 29 Corr. Area 1: 2,464.4
 Noise: 0.4

Peak table for sample 3 : sample 3

Peak	Size [bp]	Conc. [pg/μl]	Molarity [pmol/l]	Observations
1	35	125.00	5,411.3	Lower Marker
2	300	1.86	9.4	
3	315	1.40	6.7	
4	353	5.32	22.8	
5	394	8.34	32.1	
6	428	6.02	21.3	
7	473	7.03	22.5	
8	543	4.61	12.9	
9	576	6.76	17.8	
10	616	8.69	21.4	
11	681	10.40	23.1	
12	1,047	23.55	34.1	
13	1,397	18.36	19.9	
14	1,606	8.36	7.9	
15	1,772	9.57	8.2	
16	2,603	28.68	16.7	
17	5,515	51.36	14.1	
18	6,452	18.69	4.4	
19	8,061	22.85	4.3	
20	9,047	11.43	1.9	
21	10,380	75.00	10.9	Upper Marker
22	21,917	0.00	0.0	
23	23,018	0.00	0.0	
24	25,105	0.00	0.0	
25	27,134	0.00	0.0	
26	27,830	0.00	0.0	


Assay Class: High Sensitivity DNA Assay
Data Path: C:\...ents and Settings\Bioanalyzer\2014-10-07\2014-10-07_001.xad

Created: 10/7/2014 11:27:05 AM
Modified: 10/7/2014 12:17:54 PM

Electropherogram Summary Continued ...**... Peak table for sample 3 : sample 3**

Peak	Size [bp]	Conc. [pg/μl]	Molarity [pmol/l]	Observations
27	30,787	0.00	0.0	
28	33,570	0.00	0.0	
29	37,164	0.00	0.0	
30	39,367	0.00	0.0	
31	40,411	0.00	0.0	

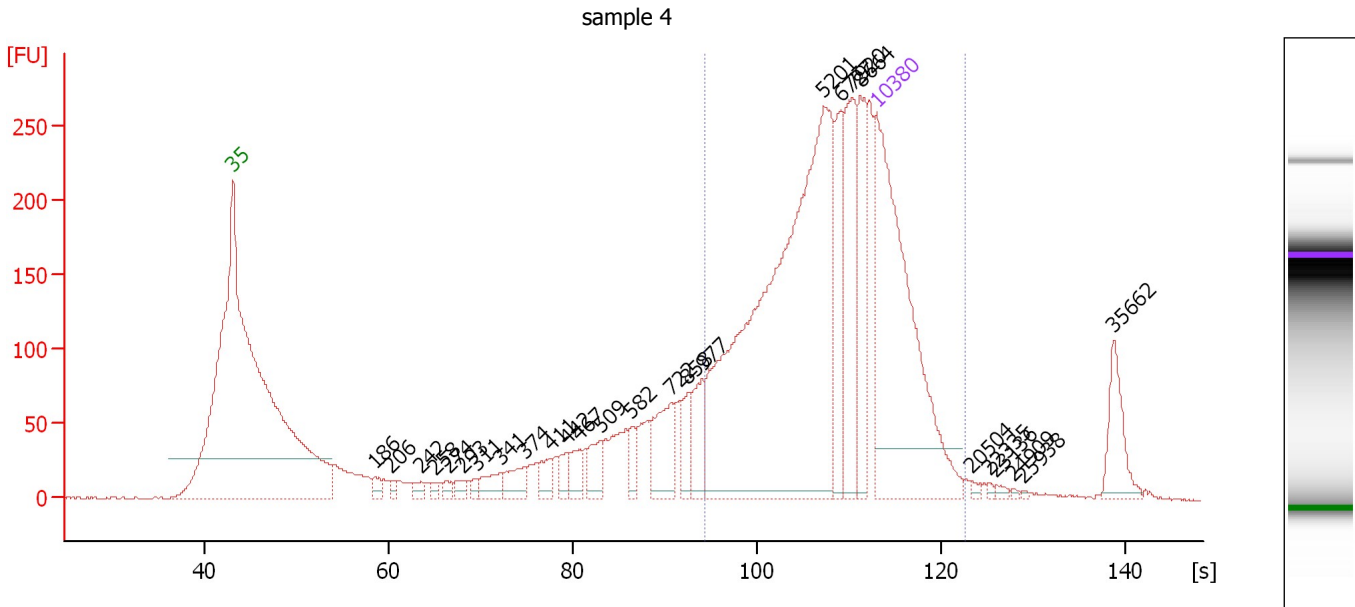
Region table for sample 3 : sample 3

From [bp]	Average Size [bp]	To [bp]	Corr. Area	% of Total	Size distribution in CV [%]	Conc. [pg/μl]	Molarity [pmol/l]	Color
667	7,014	21,358	2,464.4	71	73.6	223.61	156.0	

Assay Class: High Sensitivity DNA Assay
 Data Path: C:\...ents and Settings\Bioanalyzer\2014-10-07\2014-10-07_001.xad

Created: 10/7/2014 11:27:05 AM
 Modified: 10/7/2014 12:17:54 PM

Electropherogram Summary Continued ...



Overall Results for sample 4 : sample 4

Number of peaks found: 27 Corr. Area 1: 2,844.2
 Noise: 0.6

Peak table for sample 4 : sample 4

Peak	Size [bp]	Conc. [pg/μl]	Molarity [pmol/l]	Observations
1	35	125.00	5,411.3	Lower Marker
2	186	3.22	26.3	
3	206	1.85	13.6	
4	242	2.37	14.9	
5	258	1.58	9.3	
6	274	2.39	13.2	
7	293	2.81	14.5	
8	311	1.98	9.6	
9	341	5.63	25.0	
10	374	7.07	28.6	
11	411	4.87	17.9	
12	442	4.01	13.7	
13	467	5.45	17.7	
14	509	7.00	20.9	
15	582	4.87	12.7	
16	722	16.06	33.7	
17	858	7.52	13.3	
18	977	10.23	15.9	
19	5,201	161.63	47.1	
20	6,727	19.79	4.5	
21	7,920	27.55	5.3	
22	8,664	20.66	3.6	
23	10,380	75.00	10.9	Upper Marker
24	20,504	0.00	0.0	
25	22,335	0.00	0.0	
26	23,136	0.00	0.0	

Assay Class: High Sensitivity DNA Assay
Data Path: C:\...ents and Settings\Bioanalyzer\2014-10-07\2014-10-07_001.xad

Created: 10/7/2014 11:27:05 AM
Modified: 10/7/2014 12:17:54 PM

Electropherogram Summary Continued ...**... Peak table for sample 4 : sample 4**

Peak	Size [bp]	Conc. [pg/μl]	Molarity [pmol/l]	Observations
27	24,909	0.00	0.0	
28	25,938	0.00	0.0	
29	35,662	0.00	0.0	

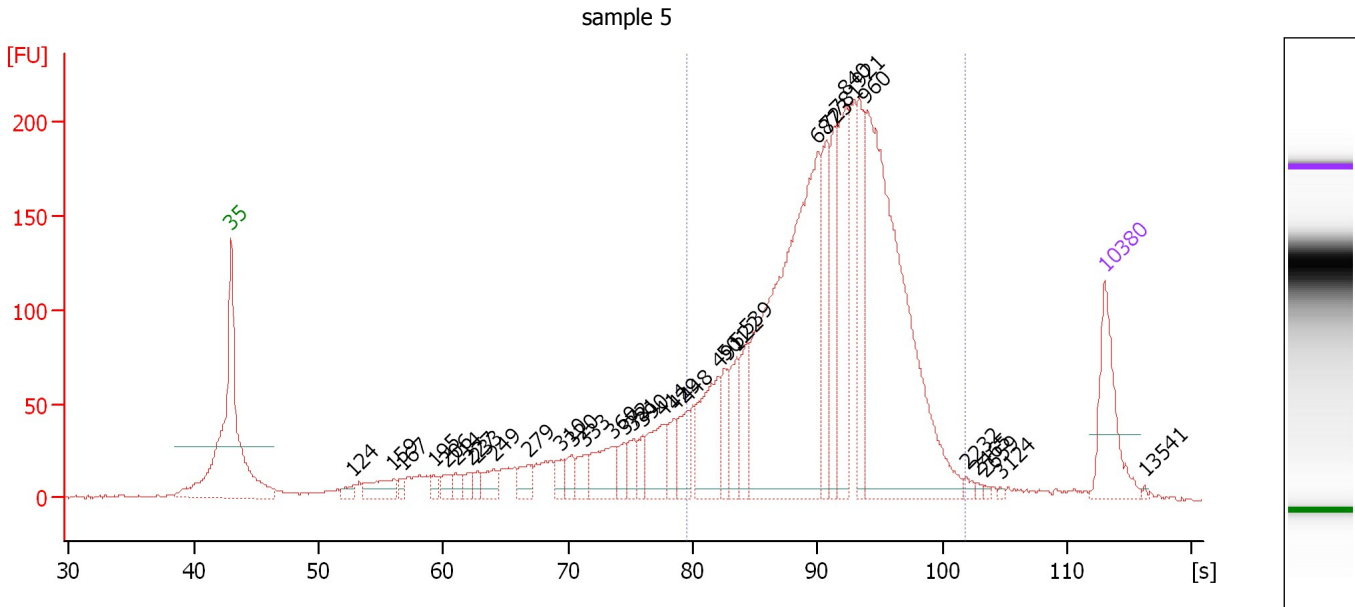
Region table for sample 4 : sample 4

From [bp]	Average Size [bp]	To [bp]	Corr. Area	% of Total	Size distribution in CV [%]	Conc. [pg/μl]	Molarity [pmol/l]	Color
1,000	6,851	19,767	2,844.2	66	64.8	250.16	121.8	■

Assay Class: High Sensitivity DNA Assay
 Data Path: C:\...ents and Settings\Bioanalyzer\2014-10-07\2014-10-07_001.xad

Created: 10/7/2014 11:27:05 AM
 Modified: 10/7/2014 12:17:54 PM

Electropherogram Summary Continued ...



Overall Results for sample 5 : sample 5

Number of peaks found: 35 Corr. Area 1: 2,868.3
 Noise: 0.5

Peak table for sample 5 : sample 5

Peak	Size [bp]	Conc. [pg/µl]	Molarity [pmol/l]	Observations
1	35	125.00	5,411.3	Lower Marker
2	124	13.29	163.1	
3	159	42.60	405.6	
4	167	10.59	96.0	
5	195	12.54	97.6	
6	206	17.60	129.2	
7	214	13.73	97.2	
8	227	13.76	92.0	
9	233	11.67	75.8	
10	249	26.20	159.6	
11	279	26.07	141.8	
12	310	17.36	85.0	
13	320	21.34	101.1	
14	333	25.52	116.1	
15	360	55.90	235.3	
16	372	23.59	96.2	
17	381	24.76	98.6	
18	390	18.77	73.0	
19	414	59.21	216.8	
20	429	29.48	104.1	
21	448	43.99	148.8	
22	491	102.77	317.0	
23	501	35.68	107.8	
24	522	55.06	159.9	
25	539	53.83	151.3	
26	687	560.90	1,237.5	

Assay Class: High Sensitivity DNA Assay
 Data Path: C:\...ents and Settings\Bioanalyzer\2014-10-07\2014-10-07_001.xad


Created: 10/7/2014 11:27:05 AM
 Modified: 10/7/2014 12:17:54 PM

Electropherogram Summary Continued ...

... Peak table for sample 5 : sample 5

Peak	Size [bp]	Conc. [pg/µl]	Molarity [pmol/l]	Observations
27	723	102.91	215.6	
28	781	91.42	177.3	
29	840	129.38	233.4	
30	921	90.55	149.0	
31	960	493.66	779.5	
32	2,232	5.14	3.5	
33	2,465	2.30	1.4	
34	2,659	2.19	1.2	
35	3,124	1.60	0.8	
36	10,380	75.00	10.9	Upper Marker
37	13,541	0.00	0.0	

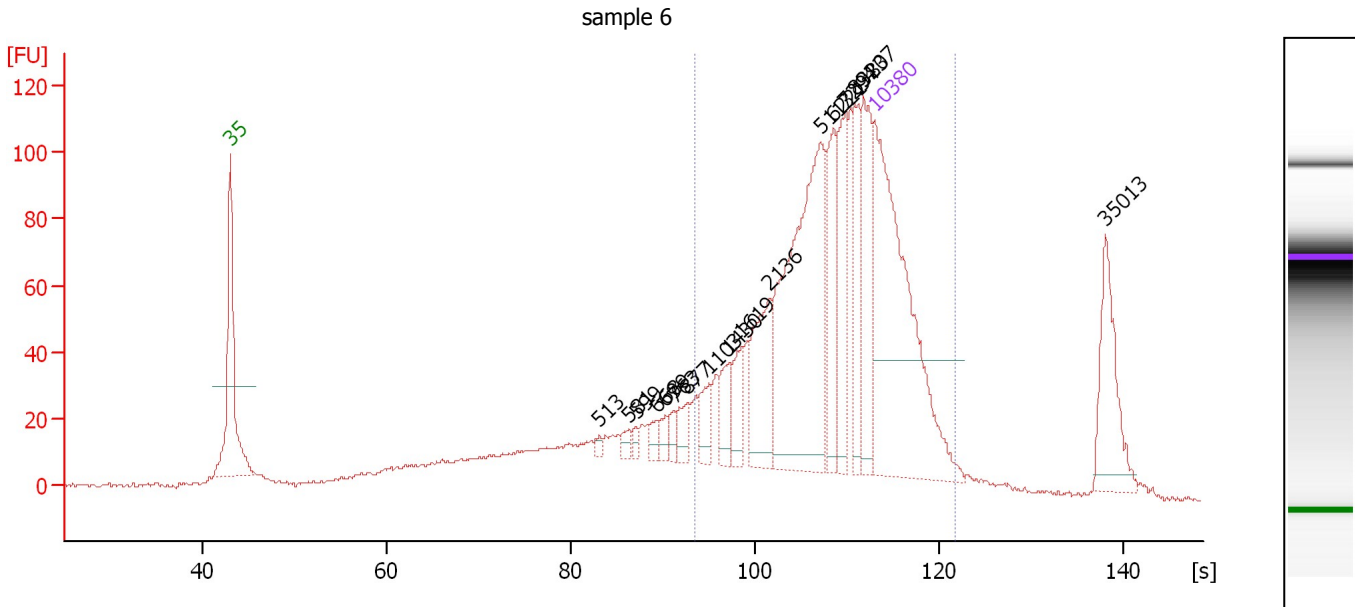
Region table for sample 5 : sample 5

From [bp]	Average Size [bp]	To [bp]	Corr. Area	% of Total	Size distribution in CV [%]	Conc. [pg/µl]	Molarity [pmol/l]	Color
448	856	2,182	2,868.3	76	38.0	1,813.62	3,725.9	

Assay Class: High Sensitivity DNA Assay
 Data Path: C:\...ents and Settings\Bioanalyzer\2014-10-07\2014-10-07_001.xad

Created: 10/7/2014 11:27:05 AM
 Modified: 10/7/2014 12:17:54 PM

Electropherogram Summary Continued ...



Overall Results for sample 6 : sample 6

Number of peaks found: 17 Corr. Area 1: 1,191.9
 Noise: 0.6

Peak table for sample 6 : sample 6

Peak	Size [bp]	Conc. [pg/μl]	Molarity [pmol/l]	Observations
1	35	125.00	5,411.3	Lower Marker
2	513	1.51	4.5	
3	581	2.15	5.6	
4	599	1.86	4.7	
5	668	2.86	6.5	
6	699	3.42	7.4	
7	763	2.88	5.7	
8	877	5.67	9.8	
9	1,103	7.26	10.0	
10	1,430	7.41	7.9	
11	1,619	9.08	8.5	
12	2,136	20.80	14.8	
13	5,113	78.79	23.3	
14	6,221	21.21	5.2	
15	7,294	19.79	4.1	
16	8,380	15.63	2.8	
17	9,237	23.86	3.9	
18	10,380	75.00	10.9	Upper Marker
19	35,013	0.00	0.0	

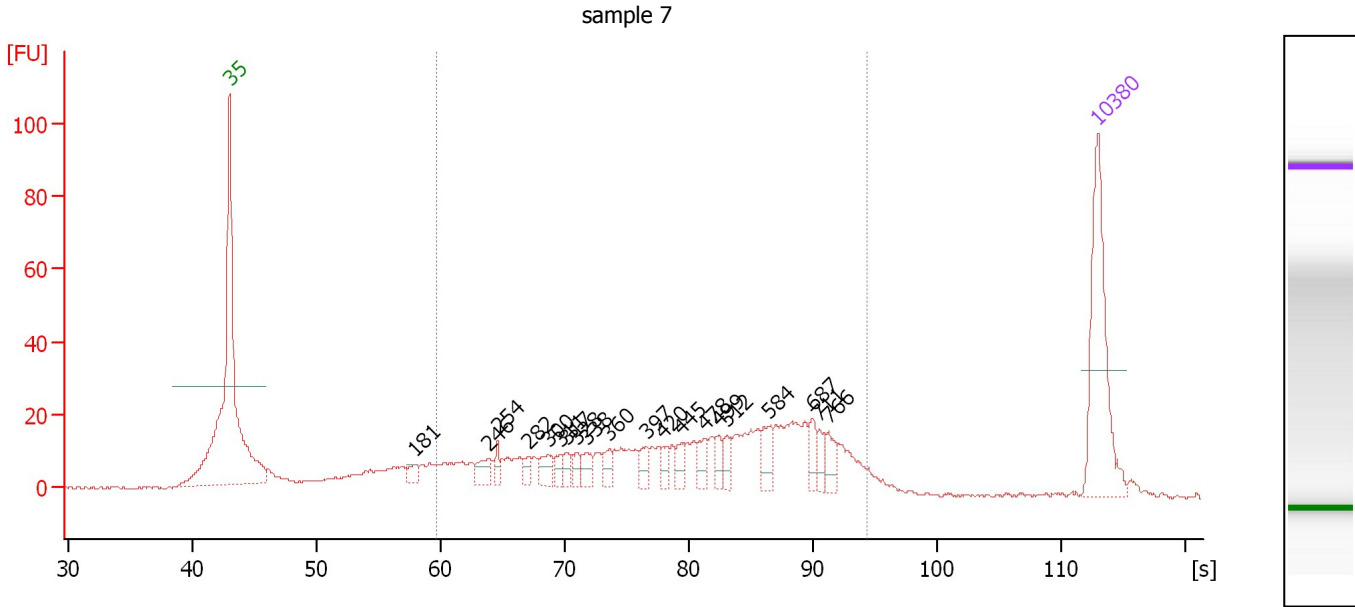
Region table for sample 6 : sample 6

From [bp]	Average Size [bp]	To [bp]	Corr. Area	% of Total	Size distribution in CV [%]	Conc. [pg/μl]	Molarity [pmol/l]	Color
926	7,039	19,059	1,191.9	63	64.0	259.41	128.8	Blue

Assay Class: High Sensitivity DNA Assay
 Data Path: C:\...ents and Settings\Bioanalyzer\2014-10-07\2014-10-07_001.xad

Created: 10/7/2014 11:27:05 AM
 Modified: 10/7/2014 12:17:54 PM

Electropherogram Summary Continued ...



Overall Results for sample 7 : sample 7

Number of peaks found: 20 Corr. Area 1: 555.5
 Noise: 0.4

Peak table for sample 7 : sample 7

Peak	Size [bp]	Conc. [pg/μl]	Molarity [pmol/l]	Observations
1	35	125.00	5,411.3	Lower Marker
2	181	8.30	69.5	
3	246	13.31	81.9	
4	254	7.98	47.5	
5	282	7.88	42.3	
6	300	14.70	74.3	
7	311	8.07	39.3	
8	317	7.26	34.7	
9	328	7.04	32.5	
10	338	11.34	50.8	
11	360	10.71	45.0	
12	397	10.95	41.8	
13	420	8.65	31.2	
14	445	9.69	33.0	
15	478	13.14	41.7	
16	499	9.72	29.5	
17	512	10.20	30.2	
18	584	16.02	41.6	
19	687	13.22	29.2	
20	711	10.24	21.8	
21	766	13.07	25.9	
22	10,380	75.00	10.9	Upper Marker

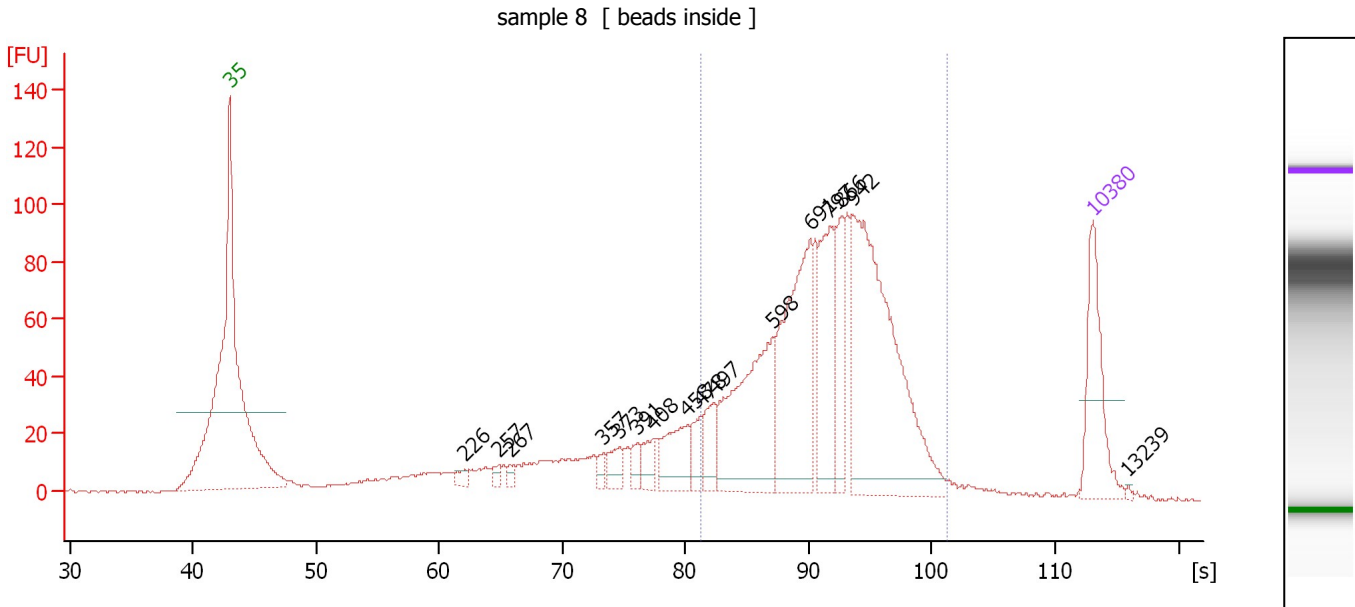
Region table for sample 7 : sample 7

From [bp]	Average Size [bp]	To [bp]	Corr. Area	% of Total	Size distribution in CV [%]	Conc. [pg/μl]	Molarity [pmol/l]	Color
200	485	1,000	555.5	80	37.6	511.99	2,000.3	Blue

Assay Class: High Sensitivity DNA Assay
 Data Path: C:\...ents and Settings\Bioanalyzer\2014-10-07\2014-10-07_001.xad

Created: 10/7/2014 11:27:05 AM
 Modified: 10/7/2014 12:17:54 PM

Electropherogram Summary Continued ...



Overall Results for sample 8 : sample 8

Number of peaks found: 16 Corr. Area 1: 1,304.1
 Noise: 0.4

Peak table for sample 8 : sample 8

Peak	Size [bp]	Conc. [pg/μl]	Molarity [pmol/l]	Observations
1	35	125.00	5,411.3	Lower Marker
2	226	9.33	62.5	
3	257	9.22	54.2	
4	267	7.90	44.8	
5	357	9.62	40.8	
6	373	22.44	91.1	
7	391	16.50	64.0	
8	408	22.59	83.8	
9	458	58.55	193.6	
10	478	27.89	88.3	
11	497	36.84	112.4	
12	598	185.29	469.2	
13	691	207.82	455.4	
14	797	114.95	218.4	
15	866	61.66	107.9	
16	942	335.96	540.6	
17	10,380	75.00	10.9	Upper Marker
18	13,239	0.00	0.0	

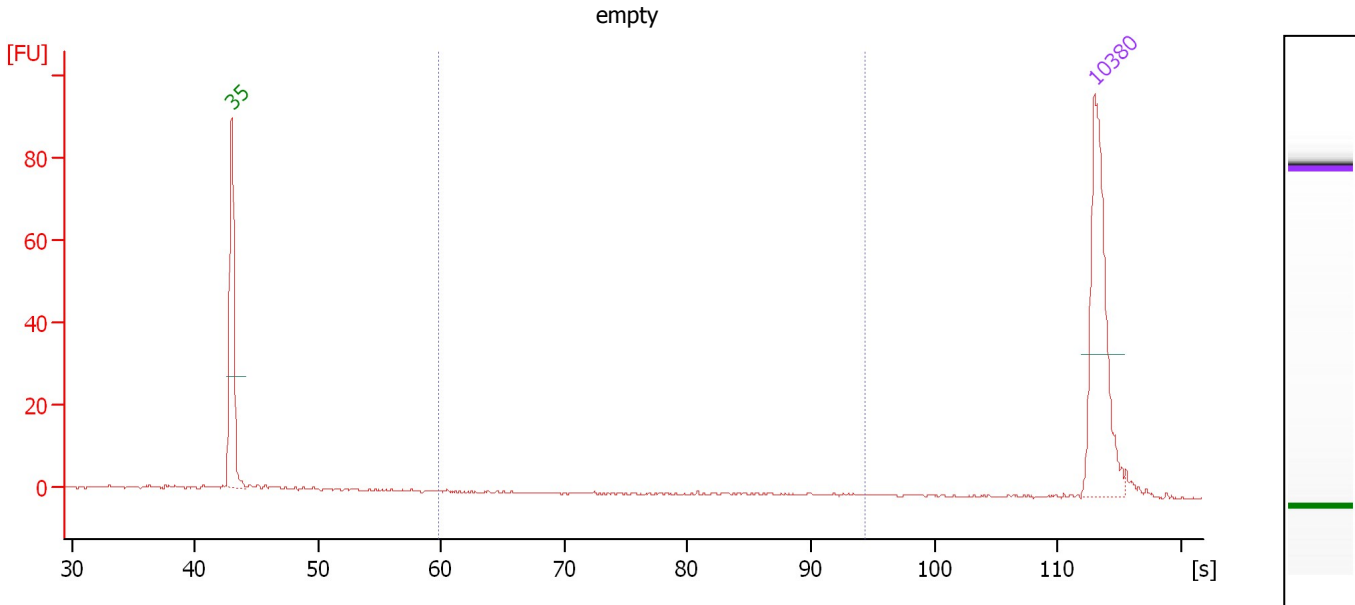
Region table for sample 8 : sample 8

From [bp]	Average Size [bp]	To [bp]	Corr. Area	% of Total	Size distribution in CV [%]	Conc. [pg/μl]	Molarity [pmol/l]	Color
477	873	2,016	1,304.1	70	36.9	1,045.20	2,086.8	Blue

Assay Class: High Sensitivity DNA Assay
 Data Path: C:\...ents and Settings\Bioanalyzer\2014-10-07\2014-10-07_001.xad

Created: 10/7/2014 11:27:05 AM
 Modified: 10/7/2014 12:17:54 PM

Electropherogram Summary Continued ...



Overall Results for sample 9 : empty

Number of peaks found: 0 Corr. Area 1: 0.3
 Noise: 0.2

Peak table for sample 9 : empty

Peak	Size [bp]	Conc. [pg/μl]	Molarity [pmol/l]	Observations
1	35	125.00	5,411.3	Lower Marker
2	10,380	75.00	10.9	Upper Marker

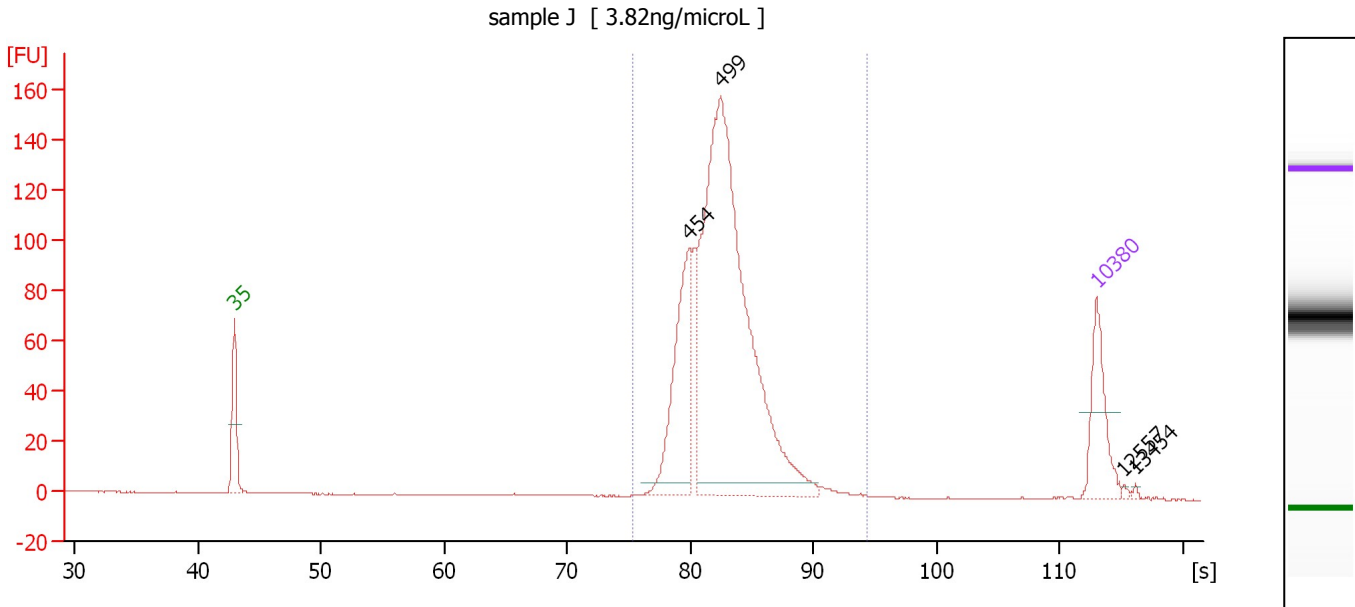
Region table for sample 9 : empty

From [bp]	Average Size [bp]	To [bp]	Corr. Area	% of Total	Size distribution in CV [%]	Conc. [pg/μl]	Molarity [pmol/l]	Color
200	630	1,000	0.3	3	27.4	0.28	0.8	Blue

Assay Class: High Sensitivity DNA Assay
 Data Path: C:\...ents and Settings\Bioanalyzer\2014-10-07\2014-10-07_001.xad

Created: 10/7/2014 11:27:05 AM
 Modified: 10/7/2014 12:17:54 PM

Electropherogram Summary Continued ...



Overall Results for sample 10 : sample J

Number of peaks found: 4 Corr. Area 1: 1,051.1
 Noise: 0.1

Peak table for sample 10 : sample J

Peak	Size [bp]	Conc. [pg/μl]	Molarity [pmol/l]	Observations
1	35	125.00	5,411.3	Lower Marker
2	454	226.83	756.9	
3	499	915.03	2,775.8	
4	10,380	75.00	10.9	Upper Marker
5	12,557	0.00	0.0	
6	13,454	0.00	0.0	

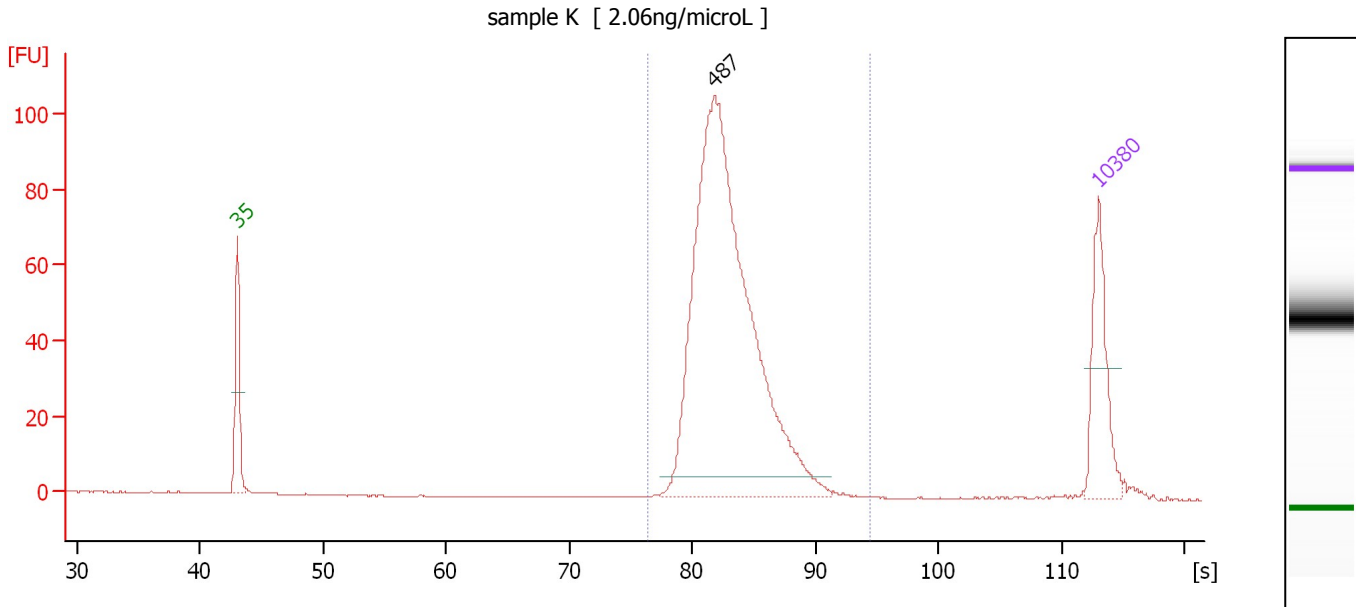
Region table for sample 10 : sample J

From [bp]	Average Size [bp]	To [bp]	Corr. Area	% of Total	Size distribution in CV [%]	Conc. [pg/μl]	Molarity [pmol/l]	Color
382	507	1,000	1,051.1	98	11.8	1,193.93	3,620.6	Blue

Assay Class: High Sensitivity DNA Assay
 Data Path: C:\...ents and Settings\Bioanalyzer\2014-10-07\2014-10-07_001.xad

Created: 10/7/2014 11:27:05 AM
 Modified: 10/7/2014 12:17:54 PM

Electropherogram Summary Continued ...



Overall Results for sample 11 : sample K

Number of peaks found: 1 Corr. Area 1: 661.6
 Noise: 0.1

Peak table for sample 11 : sample K

Peak	Size [bp]	Conc. [pg/μl]	Molarity [pmol/l]	Observations
1	35	125.00	5,411.3	Lower Marker
2	487	754.66	2,348.8	
3	10,380	75.00	10.9	Upper Marker

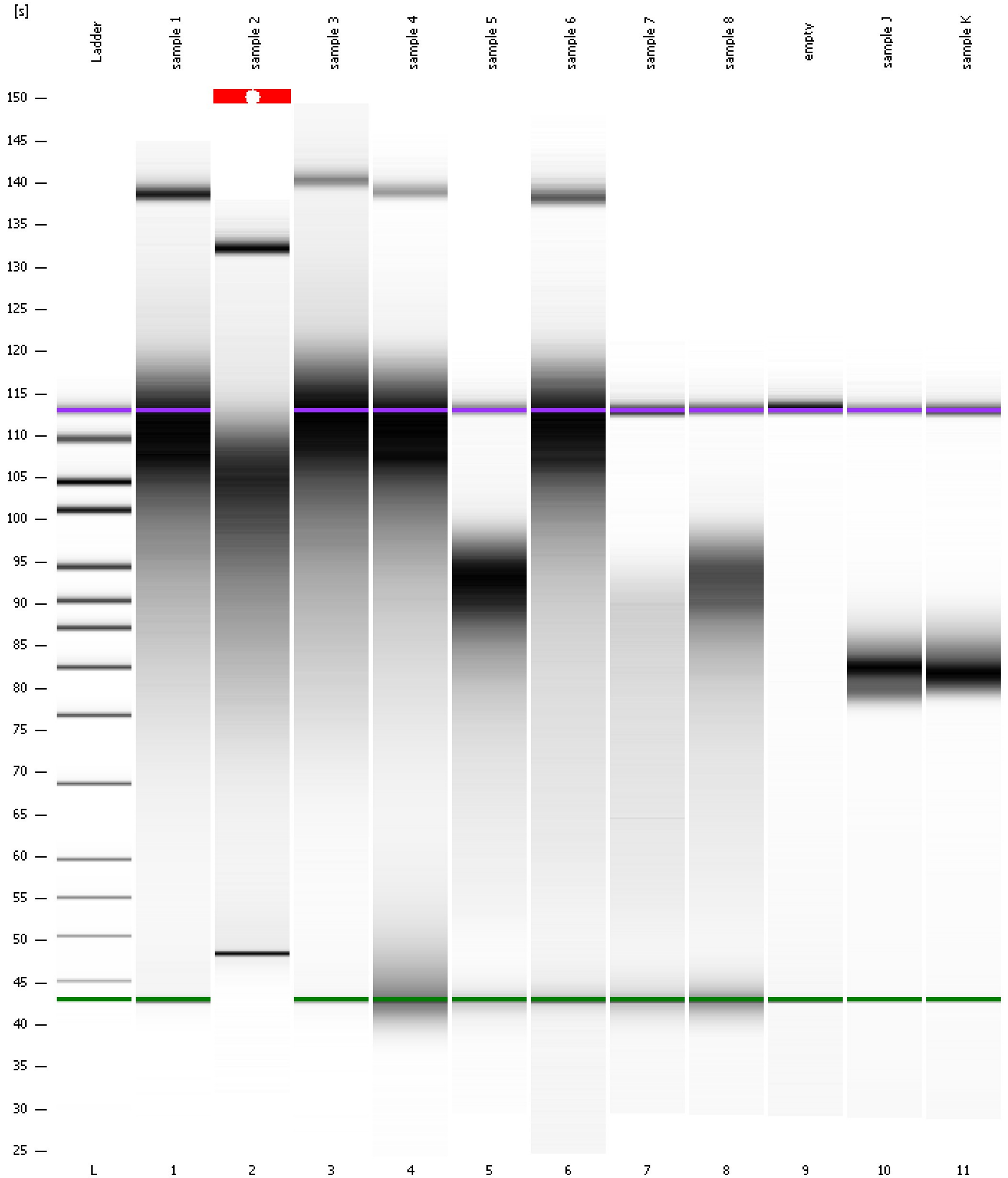
Region table for sample 11 : sample K

From [bp]	Average Size [bp]	To [bp]	Corr. Area	% of Total	Size distribution in CV [%]	Conc. [pg/μl]	Molarity [pmol/l]	Color
393	513	1,000	661.6	99	10.6	732.88	2,191.9	Blue

Assay Class: High Sensitivity DNA Assay
Data Path: C:\...ents and Settings\Bioanalyzer\2014-10-07\2014-10-07_001.xad

Created: 10/7/2014 11:27:05 AM
Modified: 10/7/2014 12:17:54 PM

Gel Image

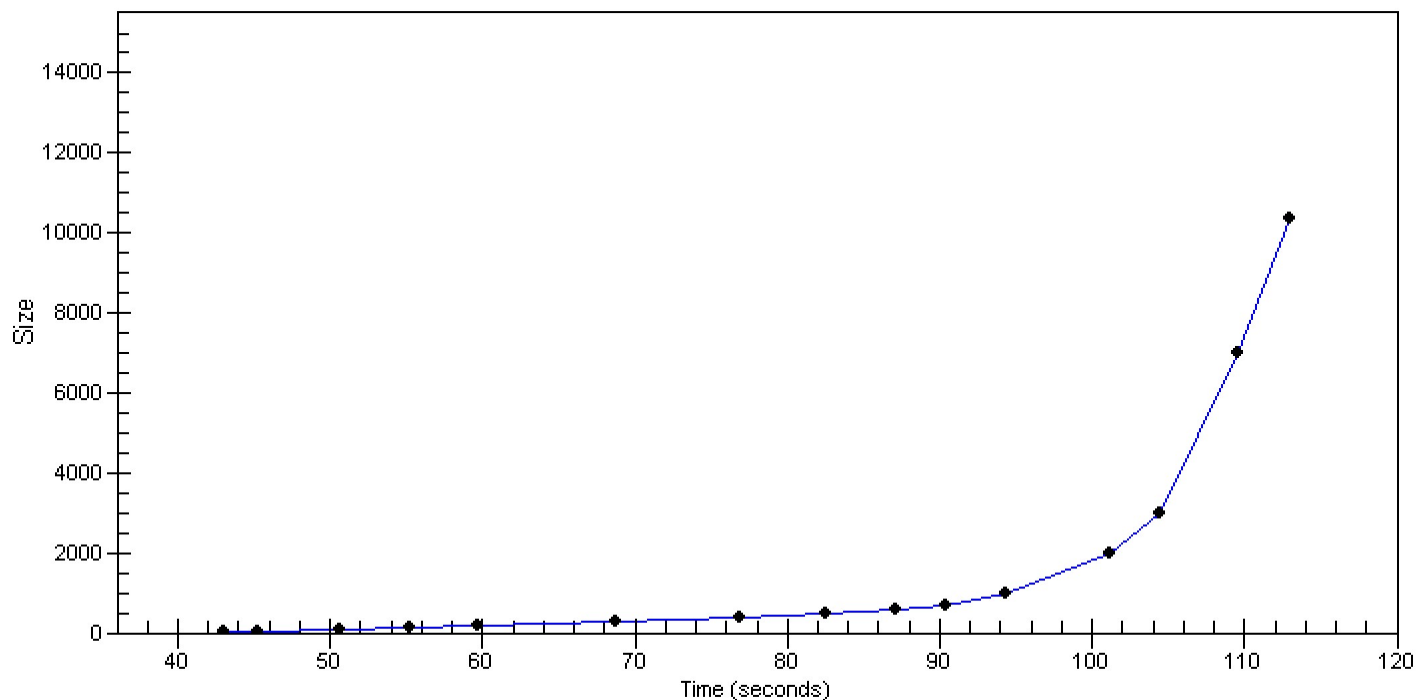


Assay Class: High Sensitivity DNA Assay
Data Path: C:\...ents and Settings\Bioanalyzer\2014-10-07\2014-10-07_001.xad

Created: 10/7/2014 11:27:05 AM
Modified: 10/7/2014 12:17:54 PM

Curves

Standard Curve



Assay Class: High Sensitivity DNA Assay
 Data Path: C:\...ents and Settings\Bioanalyzer\2014-10-07\2014-10-07_001.xad

Created: 10/7/2014 11:27:05 AM
 Modified: 10/7/2014 12:17:54 PM

Run Logbook

Description	Number	Source	Category	Sub Category	Time	Time Zone	User	Host
Run ended on port 1 (Number of wells acquired: 12)		Instrument	Run		10/7/2014 12:08:22 PM	(GMT --07:00) Pacific Standard Time	UC Davis	D8XSMGH1
Run started on port 1 (File: C:\Documents and Settings\Bioanalyzer\2014-10-07\2014-10-07_001.xad)		Instrument	Run		10/7/2014 11:27:11 AM	(GMT --07:00) Pacific Standard Time	UC Davis	D8XSMGH1
Product Number : G2938B		Instrument	Run		10/7/2014 11:27:11 AM	(GMT --07:00) Pacific Standard Time	UC Davis	D8XSMGH1
Name :		Instrument	Run		10/7/2014 11:27:11 AM	(GMT --07:00) Pacific Standard Time	UC Davis	D8XSMGH1
Vendor : Agilent Technologies		Instrument	Run		10/7/2014 11:27:11 AM	(GMT --07:00) Pacific Standard Time	UC Davis	D8XSMGH1
Serial# : DE13701086		Instrument	Run		10/7/2014 11:27:11 AM	(GMT --07:00) Pacific Standard Time	UC Davis	D8XSMGH1
Firmware : C.01.069		Instrument	Run		10/7/2014 11:27:11 AM	(GMT --07:00) Pacific Standard Time	UC Davis	D8XSMGH1
Cartridge : Electrode		Instrument	Run		10/7/2014 11:27:11 AM	(GMT --07:00) Pacific Standard Time	UC Davis	D8XSMGH1