

Assay Class: High Sensitivity DNA Assay  
Data Path: C:\...ttings\Bioanalyzer\2014-10-13\2014-10-13\2014-10-13\_001.xad

Created: 10/13/2014 2:29:07 PM  
Modified: 10/13/2014 4:34:27 PM

**Electrophoresis File Run Summary**

Instrument Information:

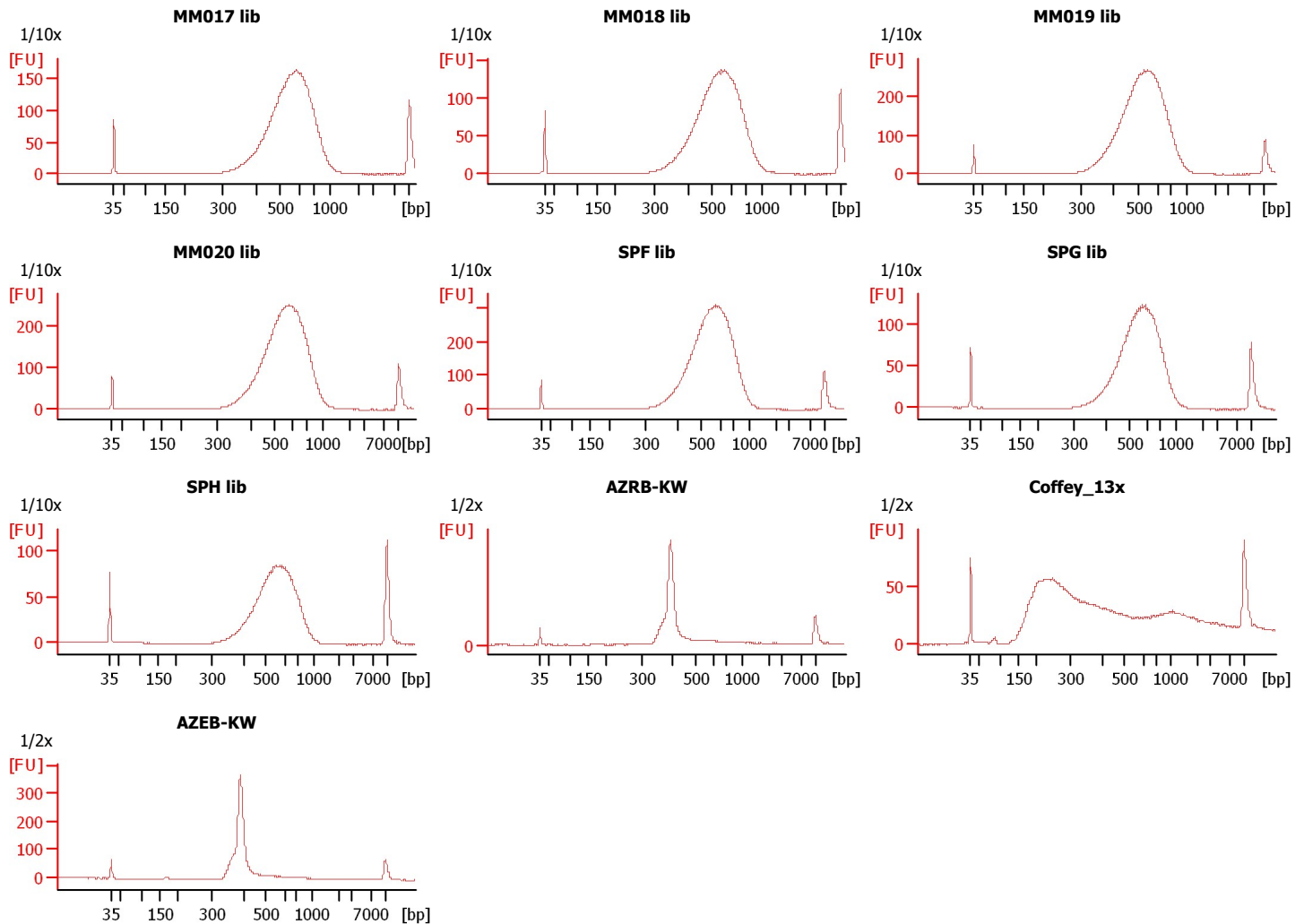
Instrument Name: DE13701086      Firmware: C.01.069  
Serial#: DE13701086      Type: G2938B

Assay Information:

Assay Origin Path: C:\Program Files\Agilent\2100 bioanalyzer\2100 expert\assays\dsDNA\High Sensitivity DNA.xsy  
Assay Class: High Sensitivity DNA Assay  
Version: 1.03  
Assay Comments: Copyright © 2003-2010 Agilent Technologies

Chip Information:

Chip Lot #:  
Reagent Kit Lot #:  
Chip Comments:



Assay Class: High Sensitivity DNA Assay  
Data Path: C:\...ttings\Bioanalyzer\2014-10-13\2014-10-13\2014-10-13\_001.xad

Created: 10/13/2014 2:29:07 PM  
Modified: 10/13/2014 4:34:27 PM

**Electrophoresis File Run Summary (Chip Summary)**

Sample Name	Sample Comment	Rest. Digest	Status	Observation	Result Label	Result Color
MM017 lib	1/10x	<input type="checkbox"/>	✓			
MM018 lib	1/10x	<input type="checkbox"/>	✓			
MM019 lib	1/10x	<input type="checkbox"/>	✓			
MM020 lib	1/10x	<input type="checkbox"/>	✓			
SPF lib	1/10x	<input type="checkbox"/>	✓			
SPG lib	1/10x	<input type="checkbox"/>	✓			
SPH lib	1/10x	<input type="checkbox"/>	✓			
AZRB-KW	1/2x	<input type="checkbox"/>	✓			
Coffey_13x	1/2x	<input type="checkbox"/>	✓			
AZEB-KW	1/2x	<input type="checkbox"/>	✓			
sample 11		<input type="checkbox"/>				
Ladder		<input type="checkbox"/>	✓			

**Chip Lot #**

**Reagent Kit Lot #**

**Chip Comments :**

Assay Class: High Sensitivity DNA Assay  
 Data Path: C:\...ttings\Bioanalyzer\2014-10-13\2014-10-13\2014-10-13\_001.xad

Created: 10/13/2014 2:29:07 PM  
 Modified: 10/13/2014 4:34:27 PM

**Electrophoresis Assay Details**

**General Analysis Settings**

Number of Available Sample and Ladder Wells (Max.) : 12  
 Minimum Visible Range [s] : 32  
 Maximum Visible Range [s] : 138  
 Start Analysis Time Range [s] : 33  
 End Analysis Time Range [s] : 137.5  
 Ladder Concentration [pg/μl] : 1950  
 Uses Standard Area for Ladder Fragments  
 Lower Marker Concentration [pg/μl] : 125  
 Upper Marker Concentration [pg/μl] : 75  
 Used Upper Marker for Quantitation  
 Standard Curve Fit is Point to Point  
 Show Data Aligned to Lower and Upper Marker

**Integrator Settings**

Integration Start Time [s] : 33.05  
 Integration End Time [s] : 137  
 Slope Threshold : 0.8  
 Height Threshold [FU] : 5  
 Area Threshold : 0.1  
 Width Threshold [s] : 0.6  
 Baseline Plateau [s] : 0.5

**Filter Settings**

Filter Width [s] : 0.5  
 Polynomial Order : 4

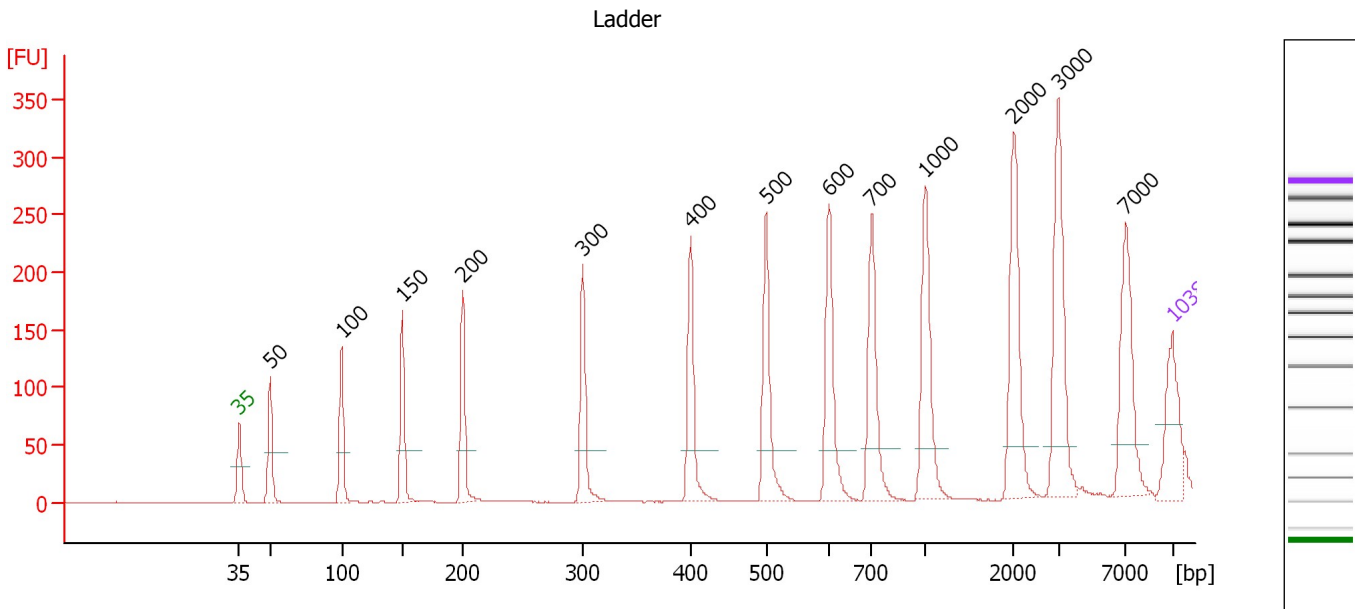
**Ladder**

Ladder Peak	Size	Area
1	35	160
2	50	210
3	100	208
4	150	221
5	200	242
6	300	270
7	400	305
8	500	306
9	600	336
10	700	321
11	1000	366
12	2000	413
13	3000	411
14	7000	400
15	10380	214

Assay Class: High Sensitivity DNA Assay  
 Data Path: C:\...ttings\Bioanalyzer\2014-10-13\2014-10-13\2014-10-13\_001.xad

Created: 10/13/2014 2:29:07 PM  
 Modified: 10/13/2014 4:34:27 PM

**Electropherogram Summary**



**Overall Results for Ladder**

Noise: 0.2

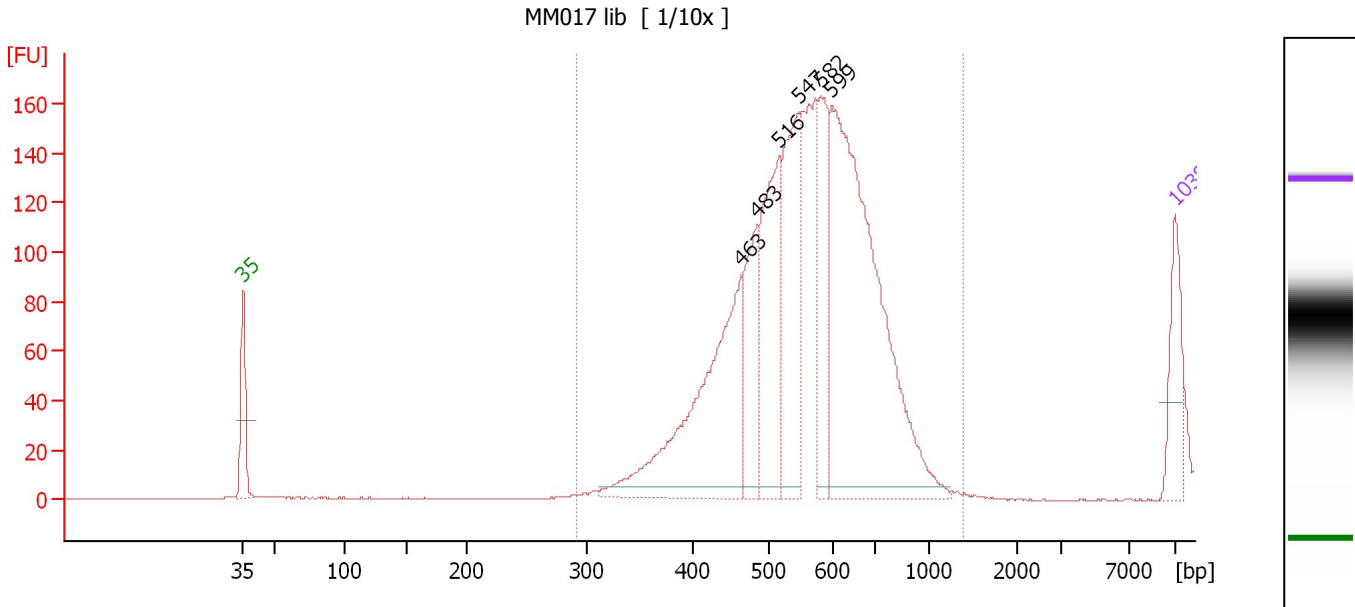
**Peak table for Ladder**

Peak	Size [bp]	Conc. [pg/μl]	Molarity [pmol/l]	Observations
1	35	125.00	5,411.3	Lower Marker
2	50	150.00	4,545.5	Ladder Peak
3	100	150.00	2,272.7	Ladder Peak
4	150	150.00	1,515.2	Ladder Peak
5	200	150.00	1,136.4	Ladder Peak
6	300	150.00	757.6	Ladder Peak
7	400	150.00	568.2	Ladder Peak
8	500	150.00	454.5	Ladder Peak
9	600	150.00	378.8	Ladder Peak
10	700	150.00	324.7	Ladder Peak
11	1,000	150.00	227.3	Ladder Peak
12	2,000	150.00	113.6	Ladder Peak
13	3,000	150.00	75.8	Ladder Peak
14	7,000	150.00	32.5	Ladder Peak
15	10,380	75.00	10.9	Upper Marker

Assay Class: High Sensitivity DNA Assay  
 Data Path: C:\...ttings\Bioanalyzer\2014-10-13\2014-10-13\2014-10-13\_001.xad

Created: 10/13/2014 2:29:07 PM  
 Modified: 10/13/2014 4:34:27 PM

**Electropherogram Summary Continued ...**



**Overall Results for sample 1 : MM017 lib**

Number of peaks found: 6                      Corr. Area 1: 1,793.5  
 Noise: 0.2

**Peak table for sample 1 : MM017 lib**

Peak	Size [bp]	Conc. [pg/μl]	Molarity [pmol/l]	Observations
1	35	125.00	5,411.3	Lower Marker
2	463	484.03	1,584.9	
3	483	157.79	494.8	
4	516	289.18	848.8	
5	547	287.93	797.9	
6	582	163.10	424.3	
7	599	779.95	1,971.6	
8	10,380	75.00	10.9	Upper Marker

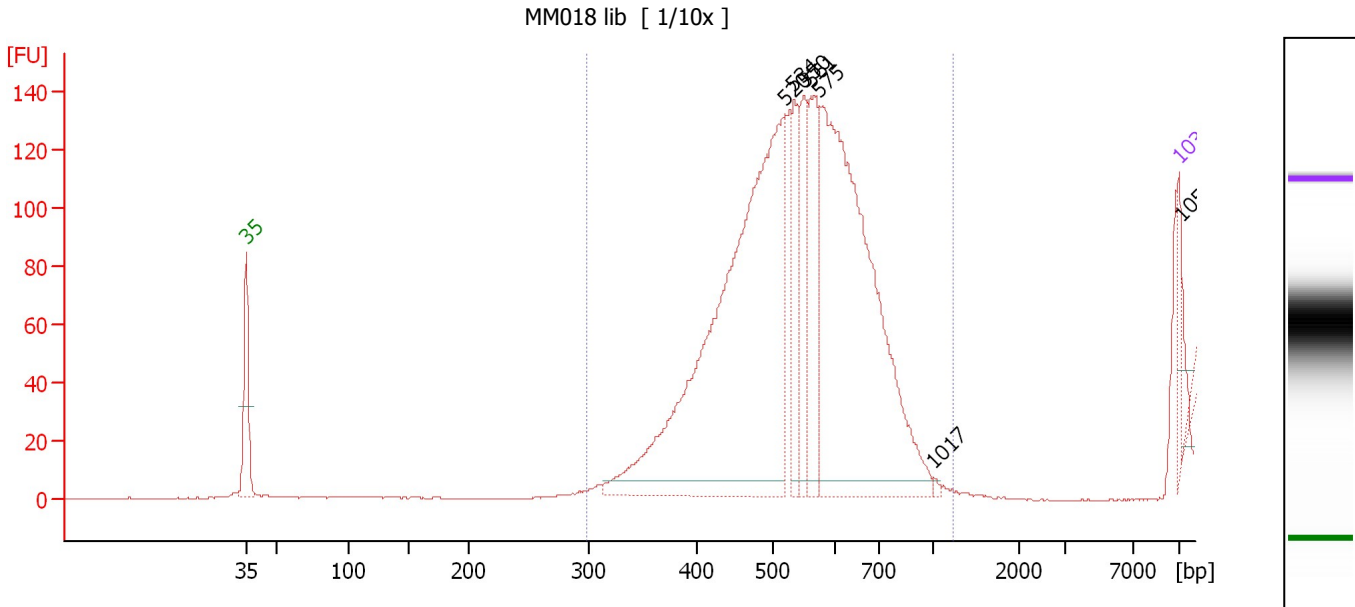
**Region table for sample 1 : MM017 lib**

From [bp]	Average Size [bp]	To [bp]	Corr. Area	% of Total	Size distribution in CV [%]	Conc. [pg/μl]	Molarity [pmol/l]	Color
292	566	1,399	1,793.5	100	16.5	1,851.98	5,135.4	Blue

Assay Class: High Sensitivity DNA Assay  
 Data Path: C:\...ttings\Bioanalyzer\2014-10-13\2014-10-13\2014-10-13\_001.xad

Created: 10/13/2014 2:29:07 PM  
 Modified: 10/13/2014 4:34:27 PM

**Electropherogram Summary Continued ...**



**Overall Results for sample 2 : MM018 lib**

Number of peaks found: 7                      Corr. Area 1: 1,436.2  
 Noise: 0.2

**Peak table for sample 2 : MM018 lib**

Peak	Size [bp]	Conc. [pg/μl]	Molarity [pmol/l]	Observations
1	35	125.00	5,411.3	Lower Marker
2	520	2,277.18	6,635.4	
3	534	212.70	604.0	
4	550	242.75	669.1	
5	561	350.54	947.3	
6	575	1,737.68	4,578.1	
7	1,017	6.79	10.1	
8	10,380	75.00	10.9	Upper Marker
9	10,535	0.00	0.0	

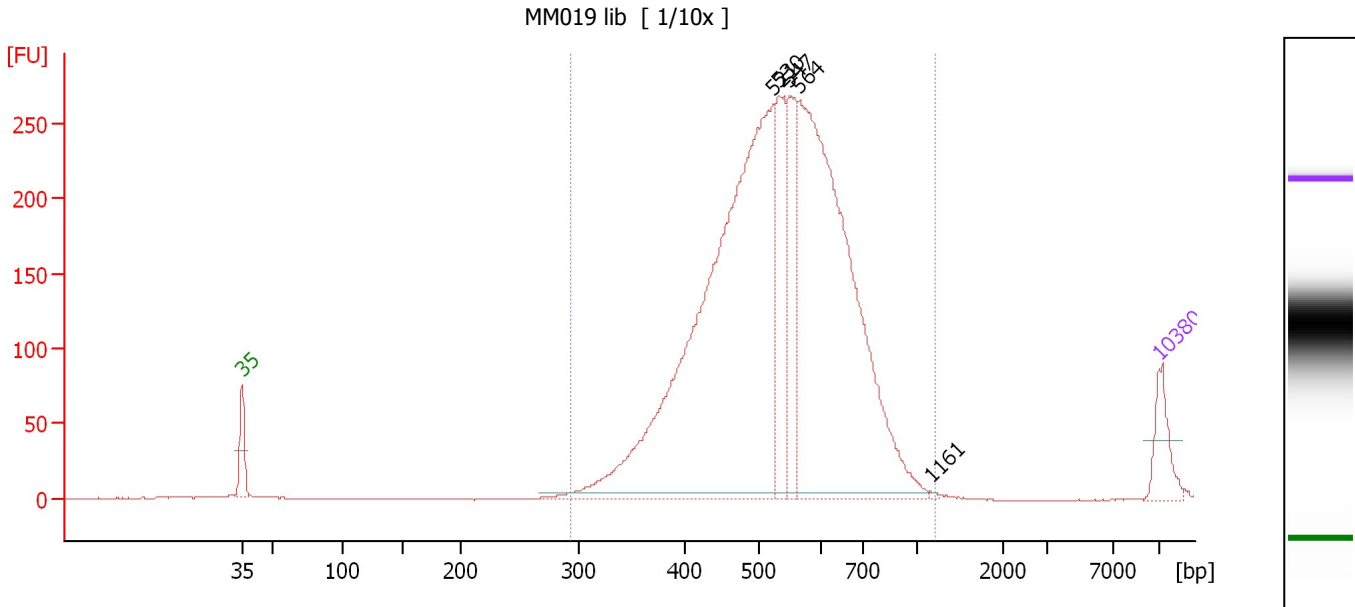
**Region table for sample 2 : MM018 lib**

From [bp]	Average Size [bp]	To [bp]	Corr. Area	% of Total	Size distribution in CV [%]	Conc. [pg/μl]	Molarity [pmol/l]	Color
297	544	1,229	1,436.2	99	15.3	3,522.76	10,118.6	Blue

Assay Class: High Sensitivity DNA Assay  
 Data Path: C:\...ttings\Bioanalyzer\2014-10-13\2014-10-13\2014-10-13\_001.xad

Created: 10/13/2014 2:29:07 PM  
 Modified: 10/13/2014 4:34:27 PM

**Electropherogram Summary Continued ...**



**Overall Results for sample 3 : MM019 lib**

Number of peaks found: 5                      Corr. Area 1: 4,063.8  
 Noise: 0.2

**Peak table for sample 3 : MM019 lib**

Peak	Size [bp]	Conc. [pg/μl]	Molarity [pmol/l]	Observations
1	35	125.00	5,411.3	Lower Marker
2	521	2,077.17	6,044.9	
3	530	301.99	863.1	
4	547	268.37	744.0	
5	564	1,521.56	4,089.4	
6	1,161	3.16	4.1	
7	10,380	75.00	10.9	Upper Marker

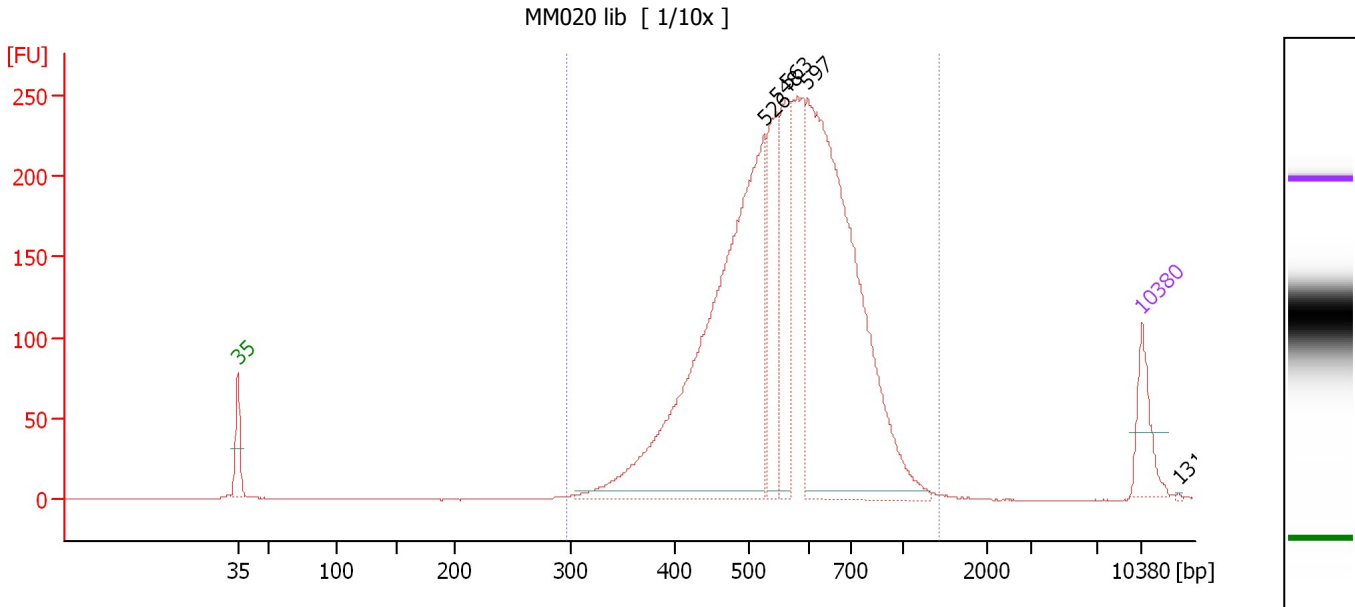
**Region table for sample 3 : MM019 lib**

From [bp]	Average Size [bp]	To [bp]	Corr. Area	% of Total	Size distribution in CV [%]	Conc. [pg/μl]	Molarity [pmol/l]	Color
292	538	1,205	4,063.8	100	20.3	4,138.32	12,305.5	Blue

Assay Class: High Sensitivity DNA Assay  
 Data Path: C:\...ttings\Bioanalyzer\2014-10-13\2014-10-13\2014-10-13\_001.xad

Created: 10/13/2014 2:29:07 PM  
 Modified: 10/13/2014 4:34:27 PM

**Electropherogram Summary Continued ...**



**Overall Results for sample 4 : MM020 lib**

Number of peaks found: 5                      Corr. Area 1: 3,639.1  
 Noise: 0.2

**Peak table for sample 4 : MM020 lib**

Peak	Size [bp]	Conc. [pg/μl]	Molarity [pmol/l]	Observations
1	35	125.00	5,411.3	Lower Marker
2	526	1,311.19	3,778.4	
3	548	250.60	693.3	
4	563	244.76	658.3	
5	597	1,175.00	2,979.7	
6	10,380	75.00	10.9	Upper Marker
7	13,106	0.00	0.0	

**Region table for sample 4 : MM020 lib**

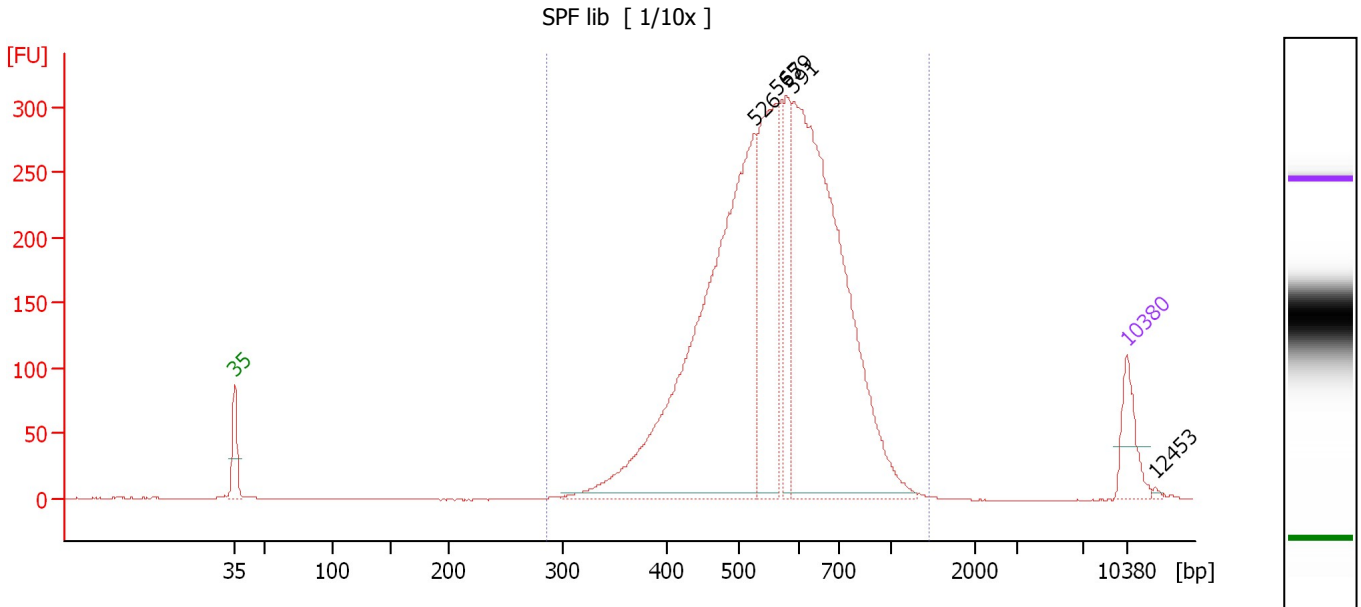
From [bp]	Average Size [bp]	To [bp]	Corr. Area	% of Total	Size distribution in CV [%]	Conc. [pg/μl]	Molarity [pmol/l]	Color
298	576	1,421	3,639.1	100	22.3	3,356.91	9,369.5	Blue



Assay Class: High Sensitivity DNA Assay  
 Data Path: C:\...ttings\Bioanalyzer\2014-10-13\2014-10-13\2014-10-13\_001.xad

Created: 10/13/2014 2:29:07 PM  
 Modified: 10/13/2014 4:34:27 PM

**Electropherogram Summary Continued ...**



**Overall Results for sample 5 : SPF lib**

Number of peaks found: 5                      Corr. Area 1: 4,474.7  
 Noise: 0.2

**Peak table for sample 5 : SPF lib**

Peak	Size [bp]	Conc. [pg/μl]	Molarity [pmol/l]	Observations
1	35	125.00	5,411.3	Lower Marker
2	526	1,471.57	4,237.9	
3	565	466.75	1,251.4	
4	579	194.32	508.2	
5	591	1,326.54	3,401.8	
6	10,380	75.00	10.9	Upper Marker
7	12,453	0.00	0.0	

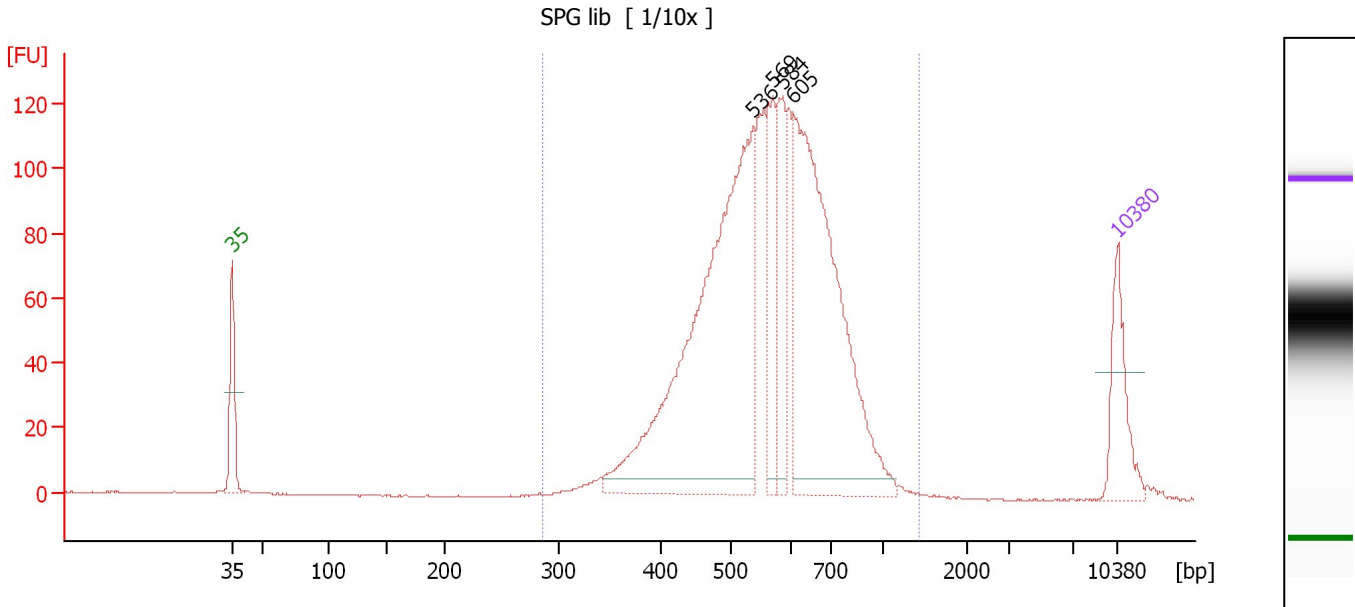
**Region table for sample 5 : SPF lib**

From [bp]	Average Size [bp]	To [bp]	Corr. Area	% of Total	Size distribution in CV [%]	Conc. [pg/μl]	Molarity [pmol/l]	Color
286	574	1,458	4,474.7	100	22.2	3,667.54	10,268.7	Blue

Assay Class: High Sensitivity DNA Assay  
 Data Path: C:\...ttings\Bioanalyzer\2014-10-13\2014-10-13\2014-10-13\_001.xad

Created: 10/13/2014 2:29:07 PM  
 Modified: 10/13/2014 4:34:27 PM

**Electropherogram Summary Continued ...**



**Overall Results for sample 6 : SPG lib**

Number of peaks found: 4                      Corr. Area 1: 1,760.1  
 Noise: 0.2

**Peak table for sample 6 : SPG lib**

Peak	Size [bp]	Conc. [pg/μl]	Molarity [pmol/l]	Observations
1	35	125.00	5,411.3	Lower Marker
2	536	782.04	2,210.3	
3	569	124.94	332.6	
4	584	123.05	319.0	
5	605	586.57	1,469.9	
6	10,380	75.00	10.9	Upper Marker

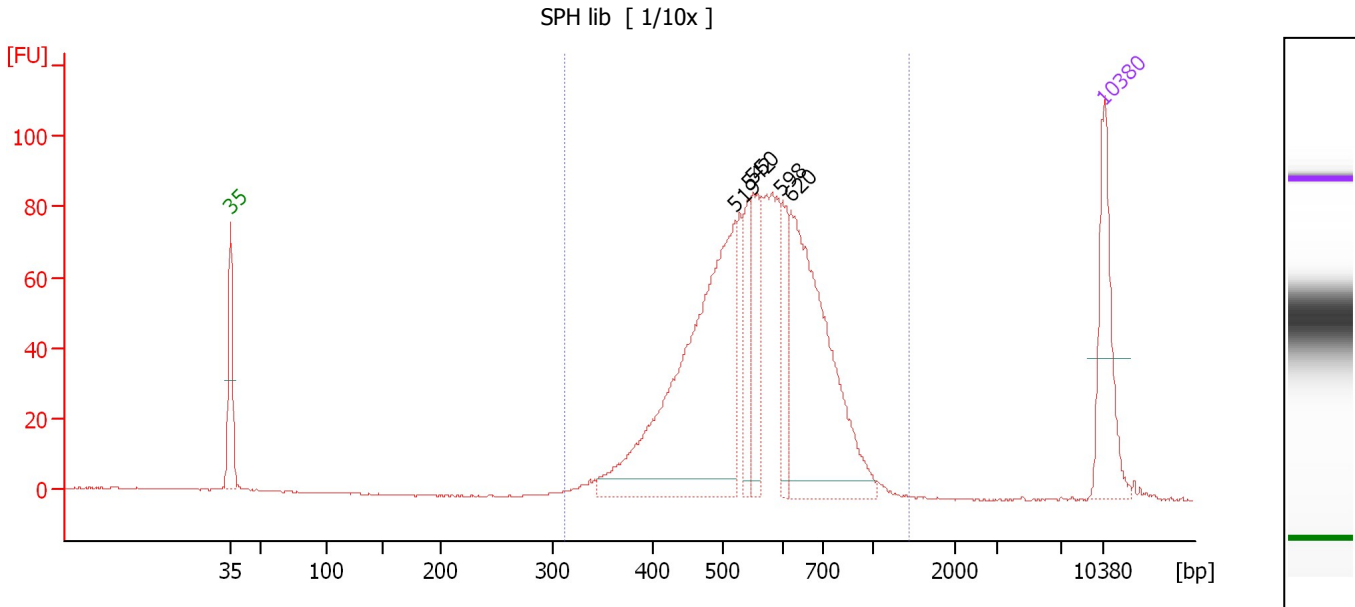
**Region table for sample 6 : SPG lib**

From [bp]	Average Size [bp]	To [bp]	Corr. Area	% of Total	Size distribution in CV [%]	Conc. [pg/μl]	Molarity [pmol/l]	Color
287	575	1,424	1,760.1	99	22.4	1,936.47	5,420.2	Blue

Assay Class: High Sensitivity DNA Assay  
 Data Path: C:\...ttings\Bioanalyzer\2014-10-13\2014-10-13\2014-10-13\_001.xad

Created: 10/13/2014 2:29:07 PM  
 Modified: 10/13/2014 4:34:27 PM

**Electropherogram Summary Continued ...**



**Overall Results for sample 7 : SPH lib**

Number of peaks found: 5                      Corr. Area 1: 1,240.3  
 Noise: 0.2

**Peak table for sample 7 : SPH lib**

Peak	Size [bp]	Conc. [pg/µl]	Molarity [pmol/l]	Observations
1	35	125.00	5,411.3	Lower Marker
2	519	416.38	1,215.0	
3	542	52.59	147.1	
4	550	69.10	190.4	
5	598	54.95	139.2	
6	620	281.73	688.8	
7	10,380	75.00	10.9	Upper Marker

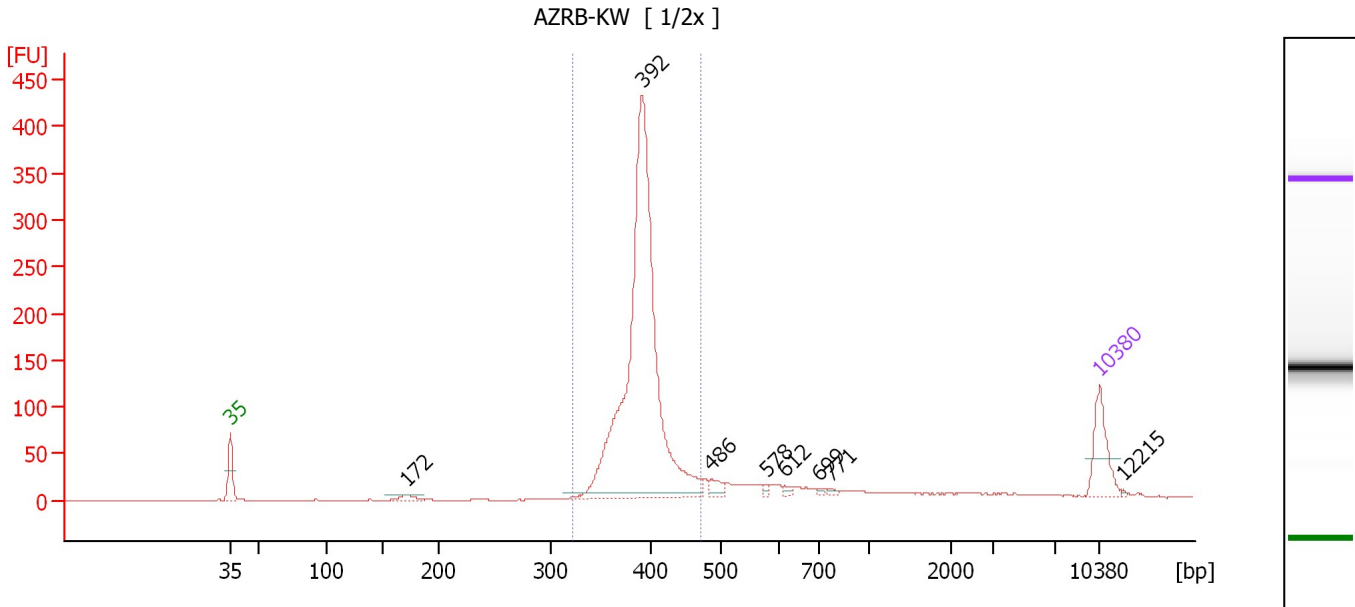
**Region table for sample 7 : SPH lib**

From [bp]	Average Size [bp]	To [bp]	Corr. Area	% of Total	Size distribution in CV [%]	Conc. [pg/µl]	Molarity [pmol/l]	Color
313	568	1,439	1,240.3	99	21.2	1,082.49	3,049.1	Blue

Assay Class: High Sensitivity DNA Assay  
 Data Path: C:\...ttings\Bioanalyzer\2014-10-13\2014-10-13\2014-10-13\_001.xad

Created: 10/13/2014 2:29:07 PM  
 Modified: 10/13/2014 4:34:27 PM

**Electropherogram Summary Continued ...**



**Overall Results for sample 8 : AZRB-KW**

Number of peaks found: 8                      Corr. Area 1: 1,414.5  
 Noise: 0.2

**Peak table for sample 8 : AZRB-KW**

Peak	Size [bp]	Conc. [pg/μl]	Molarity [pmol/l]	Observations
1	35	125.00	5,411.3	Lower Marker
2	172	17.37	152.7	
3	392	1,205.69	4,666.1	
4	486	22.01	68.6	
5	578	6.32	16.6	
6	612	7.08	17.5	
7	699	4.22	9.2	
8	771	5.19	10.2	
9	10,380	75.00	10.9	Upper Marker
10	12,215	0.00	0.0	

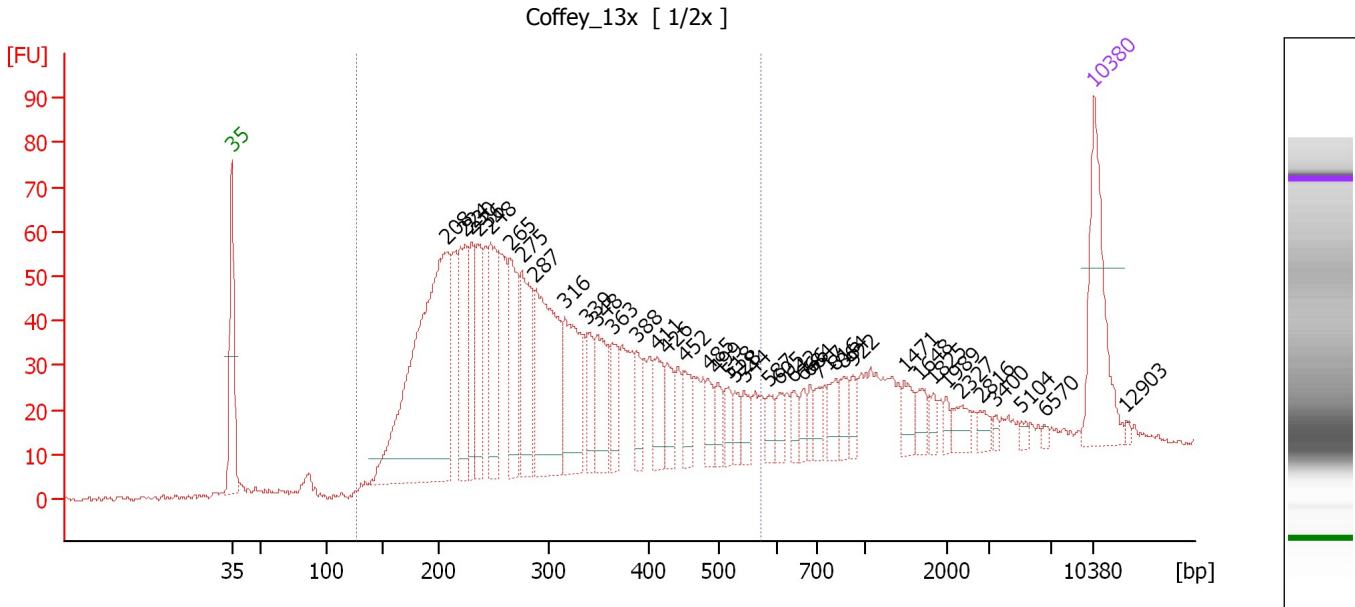
**Region table for sample 8 : AZRB-KW**

From [bp]	Average Size [bp]	To [bp]	Corr. Area	% of Total	Size distribution in CV [%]	Conc. [pg/μl]	Molarity [pmol/l]	Color
322	392	472	1,414.5	83	5.7	1,216.67	4,710.5	Blue

Assay Class: High Sensitivity DNA Assay  
 Data Path: C:\...ttings\Bioanalyzer\2014-10-13\2014-10-13\2014-10-13\_001.xad

Created: 10/13/2014 2:29:07 PM  
 Modified: 10/13/2014 4:34:27 PM

**Electropherogram Summary Continued ...**



**Overall Results for sample 9 : Coffey 13x**

Number of peaks found: 40                      Corr. Area 1: 1,491.4  
 Noise: 0.7

**Peak table for sample 9 : Coffey 13x**

Peak	Size [bp]	Conc. [pg/μl]	Molarity [pmol/l]	Observations
1	35	125.00	5,411.3	Lower Marker
2	208	424.21	3,088.6	
3	224	93.54	631.4	
4	230	67.24	443.5	
5	236	65.78	421.5	
6	248	97.33	595.8	
7	265	85.12	487.0	
8	275	99.85	549.3	
9	287	168.00	885.5	
10	316	104.91	502.9	
11	339	35.07	157.0	
12	348	57.03	248.2	
13	363	32.49	135.5	
14	388	22.81	89.1	
15	411	31.72	117.0	
16	426	27.91	99.2	
17	452	25.18	84.4	
18	485	18.47	57.7	
19	499	18.41	56.0	
20	518	16.15	47.3	
21	528	13.91	40.0	
22	544	15.15	42.2	
23	587	15.05	38.8	
24	605	12.74	31.9	
25	642	14.42	34.0	
26	666	10.58	24.1	

Assay Class: High Sensitivity DNA Assay  
 Data Path: C:\...ttings\Bioanalyzer\2014-10-13\2014-10-13\2014-10-13\_001.xad


Created: 10/13/2014 2:29:07 PM  
 Modified: 10/13/2014 4:34:27 PM

**Electropherogram Summary Continued ...**

**... Peak table for sample 9 : Coffey\_13x**

Peak	Size [bp]	Conc. [pg/μl]	Molarity [pmol/l]	Observations
27	684	10.93	24.2	
28	717	13.53	28.6	
29	816	16.25	30.2	
30	864	19.06	33.4	
31	922	10.87	17.9	
32	1,471	16.21	16.7	
33	1,648	12.20	11.2	
34	1,825	8.32	6.9	
35	1,989	5.88	4.5	
36	2,327	12.68	8.3	
37	2,816	8.29	4.5	
38	3,400	3.48	1.5	
39	5,104	3.33	1.0	
40	6,570	2.37	0.5	
41	10,380	75.00	10.9	Upper Marker
42	12,903	0.00	0.0	

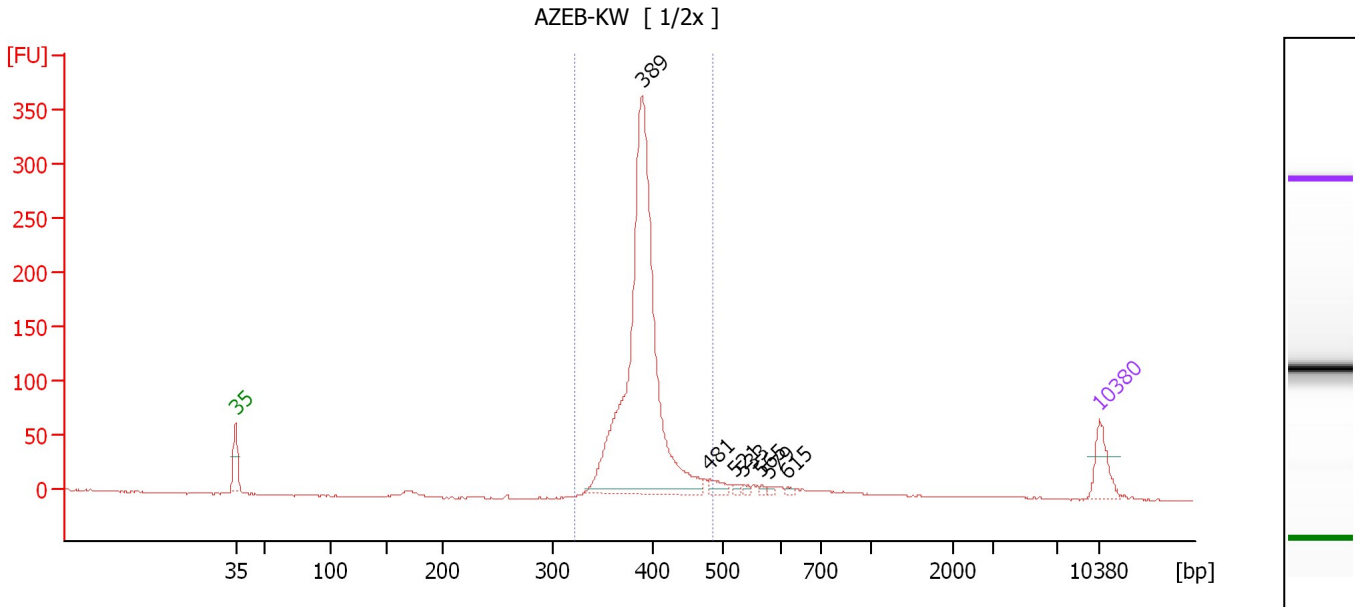
**Region table for sample 9 : Coffey\_13x**

From [bp]	Average Size [bp]	To [bp]	Corr. Area	% of Total	Size distribution in CV [%]	Conc. [pg/μl]	Molarity [pmol/l]	Color
128	305	571	1,491.4	80	32.8	1,944.08	11,164.3	

Assay Class: High Sensitivity DNA Assay  
 Data Path: C:\...ttings\Bioanalyzer\2014-10-13\2014-10-13\2014-10-13\_001.xad

Created: 10/13/2014 2:29:07 PM  
 Modified: 10/13/2014 4:34:27 PM

**Electropherogram Summary Continued ...**



**Overall Results for sample 10 : AZEB-KW**

Number of peaks found: 7                      Corr. Area 1: 1,194.8  
 Noise: 0.5

**Peak table for sample 10 : AZEB-KW**

Peak	Size [bp]	Conc. [pg/μl]	Molarity [pmol/l]	Observations
1	35	125.00	5,411.3	Lower Marker
2	389	1,646.04	6,416.5	
3	481	33.34	105.1	
4	521	9.16	26.6	
5	533	9.40	26.7	
6	565	7.05	18.9	
7	579	7.64	20.0	
8	615	6.37	15.7	
9	10,380	75.00	10.9	Upper Marker

**Region table for sample 10 : AZEB-KW**

From [bp]	Average Size [bp]	To [bp]	Corr. Area	% of Total	Size distribution in CV [%]	Conc. [pg/μl]	Molarity [pmol/l]	Color
321	391	485	1,194.8	88	6.1	1,704.26	6,628.1	Blue

Assay Class: High Sensitivity DNA Assay  
Data Path: C:\...ttings\Bioanalyzer\2014-10-13\2014-10-13\2014-10-13\_001.xad

Created: 10/13/2014 2:29:07 PM  
Modified: 10/13/2014 4:34:27 PM

**Gel Image**

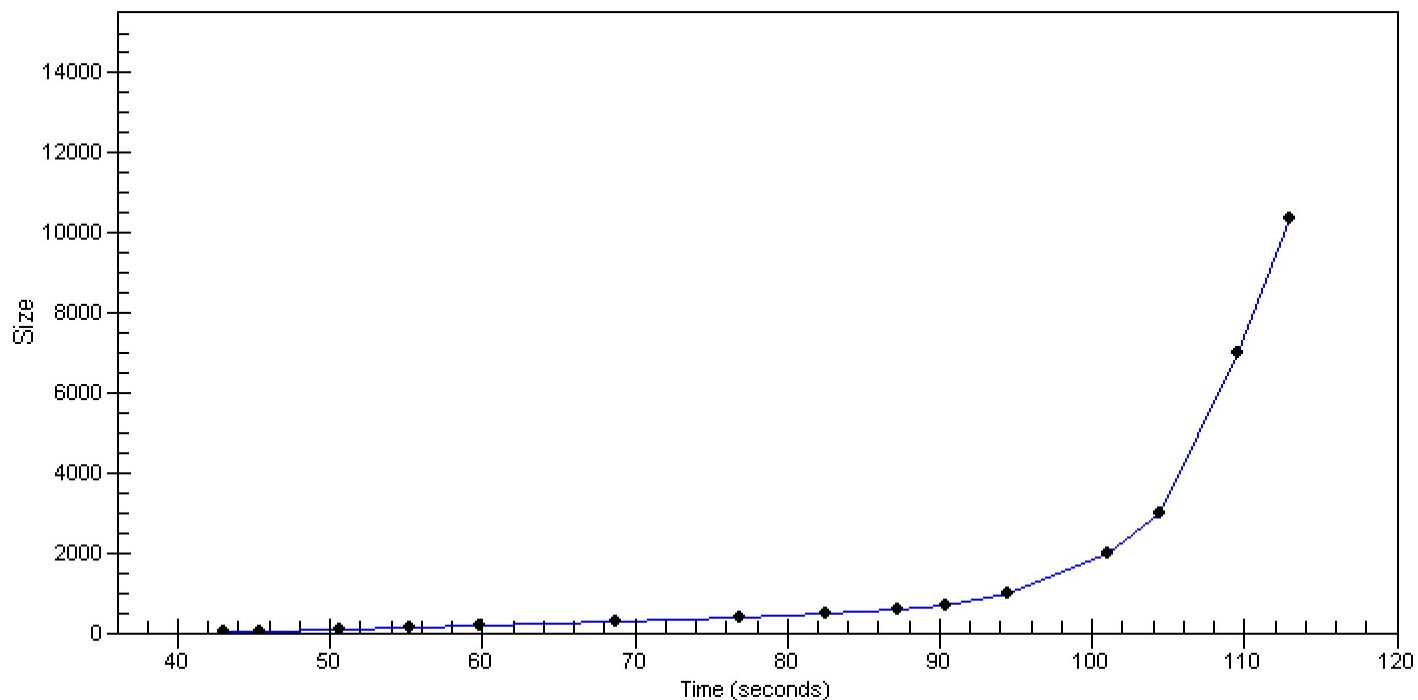


Assay Class: High Sensitivity DNA Assay  
Data Path: C:\...ttings\Bioanalyzer\2014-10-13\2014-10-13\2014-10-13\_001.xad

Created: 10/13/2014 2:29:07 PM  
Modified: 10/13/2014 4:34:27 PM

**Curves**

**Standard Curve**



---

Assay Class: High Sensitivity DNA Assay  
Data Path: C:\...ttings\Bioanalyzer\2014-10-13\2014-10-13\2014-10-13\_001.xad

Created: 10/13/2014 2:29:07 PM  
Modified: 10/13/2014 4:34:27 PM

**Invalid Samples**

Sample 11 has not been run, no results available.

Assay Class: High Sensitivity DNA Assay  
 Data Path: C:\...ttings\Bioanalyzer\2014-10-13\2014-10-13\2014-10-13\_001.xad

Created: 10/13/2014 2:29:07 PM  
 Modified: 10/13/2014 4:34:27 PM

**Run Logbook**

Description	Number	Source	Category	Sub Category	Time	Time Zone	User	Host
Run ended on port 1 (Number of wells acquired: 11)		Instrument	Run		10/13/2014 3:07:33 PM	(GMT --07:00) Pacific Standard Time	UC Davis	D8XSMGH1
Run started on port 1 (File: C:\Documents and Settings\Bioanalyzer\2014-10-13\2014-10-13\2014-10-13_001.xad)		Instrument	Run		10/13/2014 2:29:13 PM	(GMT --07:00) Pacific Standard Time	UC Davis	D8XSMGH1
Product Number : G2938B		Instrument	Run		10/13/2014 2:29:13 PM	(GMT --07:00) Pacific Standard Time	UC Davis	D8XSMGH1
Name :		Instrument	Run		10/13/2014 2:29:13 PM	(GMT --07:00) Pacific Standard Time	UC Davis	D8XSMGH1
Vendor : Agilent Technologies		Instrument	Run		10/13/2014 2:29:13 PM	(GMT --07:00) Pacific Standard Time	UC Davis	D8XSMGH1
Serial# : DE13701086		Instrument	Run		10/13/2014 2:29:13 PM	(GMT --07:00) Pacific Standard Time	UC Davis	D8XSMGH1
Firmware : C.01.069		Instrument	Run		10/13/2014 2:29:13 PM	(GMT --07:00) Pacific Standard Time	UC Davis	D8XSMGH1
Cartridge : Electrode		Instrument	Run		10/13/2014 2:29:13 PM	(GMT --07:00) Pacific Standard Time	UC Davis	D8XSMGH1